



-  *TeamPoS 3000 XE Setup*
-  *With ISS45*
- 
- 
- 

TeamPoS 3000 XE Setup with ISS45

| Date of Issue | Product Identification Number | Part Number | Brief Description |
|----------------------|--------------------------------------|--------------------|--------------------------|
| May 2007 | 45001/107 | 89000374 | Initial Release |
| August 2007 | 45001/107 | 89000392 | Issue 2 |
| December 2007 | 45001/107 | 89000409 | Issue 3 |
| May 2008 | 45001/107 | 89000448 | Issue 4 |
| September 2008 | 45001/107 | 89000473 | Issue 6 |

**© Copyright StoreNext Retail Technologies LLC 1995-2007
All rights reserved**

This publication is protected by federal copyright law. No part of this publication may be reproduced or transmitted into any human or computer language in any form or by any means, stored in a retrieval system, transmitted, redistributed, translated or disclosed to third parties, or de-compiled in any way including, but not limited to, photocopy, photograph, electronic, mechanical, magnetic or manual without the express written permission of StoreNext Retail Technologies LLC or its licensors, if any. This document, notwithstanding the above, may be distributed in electronic or printed form to personnel who are employed by either (1) a StoreNext customer of the subject system of this document or (2) personnel from an authorized StoreNext dealer of the subject system of this document. All copies, so distributed and/or so authorized, shall contain a full copy of this copyright notice.

StoreNext Retail Technologies LLC endeavors to ensure that the information in this document is correct and fairly stated but does not accept liability for any error or omission. StoreNext Retail Technologies LLC makes no representation or warranties with respect to the contents hereof, and specifically disclaims any implied warranties of merchantability or fitness for a particular purpose or non-infringement. No commitments by StoreNext or its suppliers are made from this documentation which is provided for information only.

Development of StoreNext products and documentation is continuous: StoreNext Retail Technologies LLC reserves the right to revise this publication and to make changes from time to time in the contents hereof or in the products herein described or discussed without notice and without any obligation of StoreNext Retail Technologies LLC to notify any person or organization of such revision or changes. Information published in this document will likely become obsolete over time and it is recommended that users regularly check for updates and newer versions.

StoreNext Retail Technologies LLC has prepared this manual for use by users, authorized third parties and personnel of StoreNext Retail Technologies LLC as a guide to the proper installation, operation, customization and/or maintenance of StoreNext Retail Technologies LLC equipment and software. The drawings and specifications contained herein are the property of StoreNext Retail Technologies LLC and/or its licensors.

Third-party products, services, or company names referenced in this document may be trademarked or copyrighted by their respective owners, and are for identification purposes only.

Copyrights, trademarks and license agreements shall be governed and construed in accordance with the laws of the State of Texas and the Federal Arbitration Act, and shall benefit Retailix, its successors, and assigns.

Address comments and corrections to:

StoreNext Retail Technologies LLC
Software Program Director
6100 Tennyson Parkway
Suite 130
Plano, Texas 75024

TABLE of CONTENTS

| | | |
|--------|--|----|
| 0. | Document Control..... | c |
| 0.1. | Distribution List — As per manuals | c |
| 0.2. | Changes Forecast | c |
| 0.3. | Change History | c |
| 1. | Peripheral Installation and Setup for the TeamPoS 3000Xe and ISS45 | 1 |
| 1.1. | Load the Common Control Objects OposCCOs-1_10_000..... | 1 |
| 1.2. | D22 Display Touch Screen Driver..... | 1 |
| 1.3. | D25 Display Touch Screen Driver..... | 1 |
| 1.4. | 92U USB Keyboard Driver Installation..... | 1 |
| 1.5. | VF60 USB 2x20 Display Installation | 2 |
| 1.6. | Epson 6000II or 6000III USB Printer Installation..... | 2 |
| 1.7. | PSC 8200/8500 USB OPOS old driver installation (if not using the RS232 connection)..... | 3 |
| 1.8. | DataLogic 8200/8300/8400/8500 USB OPOS new driver installation (if not using the RS232 connection) | 4 |
| 1.9. | PSC 6500 Hand Held Scanner installation | 9 |
| 1.10. | PSC 1000i Table Scanner installation..... | 9 |
| 1.11. | TPG A776 or A794 USB Printer Installation | 10 |
| 1.12. | D22_D25 Keyboard, MSR and Key lock Installation | 10 |
| 1.13. | HyperCom 4100/4250 USB Installation..... | 11 |
| 2. | Peripherals Notes | 11 |
| 2.1. | COM1 | 11 |
| 2.2. | COM3, 4 and 5 (Optional Combo I/O board)..... | 11 |
| 2.3. | Cash Drawer Connection | 12 |
| 3. | ISS45 Installation on the TeamPoS 3000XE..... | 12 |
| 3.1. | Starting ISS45 WinPOS installation | 12 |
| 4. | ISS45 Peripheral Setup for Connected Devices on the TP3000XE..... | 22 |
| 4.1. | 92U USB Keyboard | 22 |
| 4.1.1. | ISS45 V7 Configuration | 22 |
| 4.1.2. | ISS45 V8 Configuration | 22 |
| 4.2. | VF60 USB 2x20 Display | 23 |
| 4.2.1. | ISS45 V7 Configuration | 23 |
| 4.2.2. | ISS45 V8 Configuration | 23 |
| 4.3. | Epson 6000IIU/6000IIIU USB Printer, MICR and Connected Cash Drawer .. | 23 |
| 4.3.1. | ISS45 V7 Configuration (Prior to V7.1.3.0-050 release) | 23 |
| 4.3.2. | ISS45 V7 Configuration (V7.1.3.0-050 and above) | 24 |
| 4.3.3. | ISS45 V8 Configuration | 25 |
| 4.4. | PSC/DataLogic 8200, 8300, 8400 or 8500 USB Scanner and Scale configuration..... | 25 |
| 4.4.1. | ISS45 V7 Configuration | 25 |
| 4.4.2. | ISS45 V8 Configuration | 26 |
| 4.5. | PSC 6500 Hand Held USB Scanner | 27 |

| | | |
|--|--|-----------|
| 4.5.1. | ISS45 V7 Configuration | 27 |
| 4.5.2. | ISS45 V8 Configuration | 27 |
| 4.6. | PSC 1000i Table USB Scanner..... | 28 |
| 4.6.1. | ISS45 V7 Configuration | 28 |
| 4.6.2. | ISS45 V8 Configuration | 28 |
| 4.7. | Dual USB OPOS DataLogic Scanner Support (V8.1.3.2-050 and above) | 29 |
| 4.7.1. | ISS45 V8.1.3.2-050 and Above Configuration..... | 29 |
| 4.8. | TPG A776 or A794 USB Printer | 29 |
| 4.8.1. | ISS45 V7 Configuration (Prior to V7.1.3.0-050) | 29 |
| 4.8.2. | ISS45 V7 Configuration (V7.1.3.0-050 and above) | 30 |
| 4.8.3. | ISS45 V8 Configuration | 30 |
| 4.9. | D22_D25 MSR and Key Lock..... | 31 |
| 4.9.1. | ISS45 V7 Configuration | 31 |
| 4.9.2. | ISS45 V8 Configuration | 32 |
| 4.10. | HyperCom 4100/4250 USB Pin Pad..... | 32 |
| 4.10.1. | ISS45 V7 Configuration | 32 |
| 4.10.2. | ISS45 V8 Configuration | 32 |
| 5. | Further installation | 33 |
| 5.1. | Scope of this document..... | 33 |
| ATTACHMENT A..... | | 33 |
| (RADEON 7000 SERIES VIDEO CARD INSTALLATION)..... | | 33 |

0. Document Control

0.1. Distribution List — As per manuals

0.2. Changes Forecast

This document will be updated as new configurations and corrections are made available

0.3. Change History

Issue 1 This is the initial release of this document. This document will change as new configurations are made available

Issue 2 Major changes and updates to the document

Issue 3 Added installation section 1.13 for HyperCom 4100\4250 USB

Updated Attachment A for Radeon 7000 Video Card Installation

Added setup section 4.10 for HyperCom 4100\4250 USB

Issue 4 Changed section 1.7 PSC 8200/8500 USB OPOS old driver installation (if not using the RS232 connection)

Added new section 1.8 DataLogic 8200/8300/8400/8500 USB OPOS new driver installation (if not using the RS232 connection)

Issue 5 Updated Epson 6000IIIU/6000IIIU USB section 4.3.1 ISS45 V7 Configuration with additional title name of (Prior to V7.1.3.0-050 release)

Added new Epson 6000IIIU/6000IIIU USB section 4.3.2 ISS45 V7 Configuration (V7.1.3.0-050 and above)

Note: The DefaultDrawerName in V7.1.3.0 changed to DefaultDrawer1Name

Updated TPG A776 or A794 USB section 4.8.1 ISS45 V7 Configuration with additional title name of (Prior to V7.1.3.0-050 release)

Added new TPG A776 or A794 USB section 4.8.2 ISS45 V7 Configuration (V7.1.3.0-050 and above)

Note: The DefaultDrawerName in V7.1.3.0 changed to DefaultDrawer1Name

Issue 6 Added Dual USB OPOS DataLogic Scanner Support (V8.1.3.2-050 and above) section 4.7

NOTE: REFER TO ATTACHMENT A AT THE BACK OF THIS DOCUMENT IF INSTALLING THE ADD-IN VIDEO CARD FOR A SECOND DVI DISPLAY

1. Peripheral Installation and Setup for the TeamPoS 3000Xe and ISS45

NOTE: The TeamPoS 3000XE is shipped preloaded with WePOS. The folder TeamPoS3000-XE_Software_Support contains most of the drivers needed for peripheral installation.

1.1. Load the Common Control Objects OposCCOs-1_10_000

- 1.1.1. Run OposCCOs-1_10_000.exe from the folder “TeamPoS3000-XE_Software_Support\Drivers\OPOS\Common Controls”

1.2. D22 Display Touch Screen Driver

- 1.2.1. The Elo touch driver for the D22 display and documentation is located in the folder “TeamPoS3000-XE_Software_Support\Drivers\LCD Display Touch\TeamPoS 3000 D22-25”

1.3. D25 Display Touch Screen Driver

- 1.3.1. The Elo touch driver for the D25 display and documentation is located in the folder “TeamPoS3000-XE_Software_Support\Drivers\LCD Display Touch\TeamPoS 3000 D22-25”

1.4. 92U USB Keyboard Driver Installation

- 1.4.1. Shutdown the TeamPoS 3000XE prior to plugging in the 92U keyboard.
- 1.4.2. Plug the 12v powered USB cable into an available powered USB port on the back of the TeamPoS 3000XE.
- 1.4.3. Turn on the TeamPoS 3000XE
- 1.4.4. The WePOS operating system will discover the new 92U keyboard and start the installation wizard.
- 1.4.5. The driver you want to install is located in the folder “TeamPoS3000-XE_Software_Support\Drivers\Keyboards\92U\Driver”
- 1.4.6. Once the driver for the 92U keyboard is installed you will be prompted by the installation wizard for a USB Serial Port driver
- 1.4.7. The driver you want to install is located in the folder “TeamPoS3000-XE_Software_Support\Drivers\Keyboards\92U\Driver”
- 1.4.8. Once the driver is loaded, the 92U keyboard will be installed and maps to COM6 on the TeamPoS 3000XE
- 1.4.9. Use device manager in windows and remap the 92U keyboard COM6 to COM7

- 1.4.10. The 92U keyboard does not require OPOS to be installed to work with ISS45

1.5. VF60 USB 2x20 Display Installation

- 1.5.1. Shutdown the TeamPoS 3000XE prior to plugging in the VF60U display
- 1.5.2. Plug the 12v powered USB cable into an available powered USB port on the back of the TeamPoS 3000XE
- 1.5.3. Turn on the TeamPoS 3000XE
- 1.5.4. The driver for the VF60U has already been loaded in the WePOS image and the VF60U maps to COM46
- 1.5.5. Load OPOS for the VF60U by running the file FTXSOPOS_1_10_2.exe located in the folder “TeamPoS3000-XE_Software_Support\Drivers\OPOS\FTXSOPOS”
- 1.5.6. During the installation of OPOS select Platform Type TeamPoS 3000 and LineDisplay1_VF60 (USB)

1.6. Epson 6000II or 6000III USB Printer Installation

- 1.6.1. Shutdown the TeamPoS 3000XE prior to plugging in the Epson printer
- 1.6.2. Plug the 24v powered USB cable into the 24v powered USB port on the back of the TeamPoS 3000XE
- 1.6.3. Turn on the TeamPoS 3000XE
- 1.6.4. The TMUSB driver has already been loaded in the WePOS image and will install automatically
- 1.6.5. Load OPOS for the Epson 6000II or 6000III printer
 - 1.6.5.1. Extract the Epson OPOSADK250E.exe and OPOSADK250ESP6.exe located in the folder “ TeamPoS3000-XE_Software_Support\Drivers\Printers\DT50III\OPOS” to the C:\ folder
 - 1.6.5.2. Run setup.exe in the disk1 folder in the path of the unzipped folder above “ C:\OPOSADK\V250e\disk1”
 - 1.6.5.3. During the installation
 - 1.6.5.3.1. Select the CCO (Common Control Object)
 - 1.6.5.3.2. Select Full install
 - 1.6.5.3.3. Do you want to install the TMUSB driver (answer yes)
 - 1.6.5.3.4. Do you want to install the Parallel I/F (answer no)
- 1.6.6. Load OPOS SP6 for the Epson 6000II or 6000III printer after loading OPOS above
 - 1.6.6.1. Run setup.exe in the disk1 folder in the path of the unzipped folder above “C:\OPOSADK\V250e\SP6\disk1”
 - 1.6.6.1.1. Select no registry file during the installation
 - 1.6.6.1.2. Do you want to install the Parallel I/f (answer no)
- 1.6.7. Setup the devices in the Epson device manager
 - 1.6.7.1. Printer
 - 1.6.7.1.1. Add New Device

- 1.6.7.1.2. Select device name TM-H6000II or TM-H6000III
- 1.6.7.1.3. Select detailed model TM-H6000IIU or TM-H6000IIIU
- 1.6.7.1.4. Add New LDN TM-H6000IIU or TM-H6000IIIU
- 1.6.7.1.5. USB Port Settings
- 1.6.7.1.6. Default is USB1 but use Auto Settings to scan for port
- 1.6.7.1.7. On the TP3000XE it seems to use USB1 normally and this should be used. The TP3000XL seems to find and use USB2
- 1.6.7.1.8. Run the Health Check Interactive to test
- 1.6.7.2. MICR
 - 1.6.7.2.1. Add New Device
 - 1.6.7.2.2. Select device name TM-H6000II or TM-H6000III
 - 1.6.7.2.3. Select detailed model TM-H6000IIU or TM-H6000IIIU
 - 1.6.7.2.4. Add New LDN TM-H6000IIU or TM-H6000IIIU
 - 1.6.7.2.5. USB Port Settings
 - 1.6.7.2.6. Default is USB1 but use Auto Settings to scan for port
 - 1.6.7.2.7. On the TP3000XE it seems to use USB1 normally and this should be used. The TP3000XL seems to find and use USB2
 - 1.6.7.2.8. Run the Health Check Interactive to test
- 1.6.7.3. CashDrawer
 - 1.6.7.3.1. Add New Device
 - 1.6.7.3.2. Select device name Standard (for single cash drawer)
 - 1.6.7.3.3. Select detailed model StandardU
 - 1.6.7.3.4. Add New LDN TM-H6000IIU or TM-H6000IIIU
 - 1.6.7.3.5. USB Port Settings
 - 1.6.7.3.6. Default is USB1 but use Auto Setting to scan for port
 - 1.6.7.3.7. Need to put in the device master TM-H6000IIU or TM-H6000IIIU and click OK
 - 1.6.7.3.8. USB2 will show on a TP3000XL like above or USB1 for the TP3000XE
 - 1.6.7.3.9. Need to set Device Specific Settings
 - 1.6.7.3.9.1. Leave Pulse Time (ms) 100
 - 1.6.7.3.9.2. Change Open Status Phase to High
 - 1.6.7.3.9.3. Leave Connector Pin 2
 - 1.6.7.3.10. Run the Health Check Interactive to test
 - 1.6.7.3.10.1. A screen showing OPOS contradictory warning will appear if the output interval time does not match the printers 2500msec.
 - 1.6.7.3.10.2. Click OK and the cash drawer will be adjusted to 2500msec to match

1.7. PSC 8200/8500 USB OPOS old driver installation (if not using the RS232 connection)

Note 1: The RS232 connection does not require OPOS

Note 2: The new driver in the following section will replace this old driver and can be used for the 8200/8300/8400/8500/6500/1000i DataLogic devices and resolves one issue not reading some UPC labels. This section will be deleted

when the new driver is included on the future ISS45 distribution CD's and StoreNext web site.

- 1.7.1. Scan the PSC Labels (switch then Interface Type = IBM-USB and then switch again)
- 1.7.2. Shutdown the TeamPoS 3000XE prior to plugging in the PSC Scanner/Scale
- 1.7.3. Plug the 12v powered USB cable into an available powered USB port on the back of the TeamPoS 3000XE
- 1.7.4. Turn on the TeamPoS 3000XE
- 1.7.5. The device will be discovered by the operating system and install it as a HID device
- 1.7.6. Run the program
PSC_OPOS_USB_Installation_1_8_0_34_28Feb2007.exe located on the V7.1.2.0-050 distribution CD in the OPOS\PSC folder to install the OPOS for the PSC Scanner/Scale
NOTE: At the Select Components screen make sure you also check the Common Control Objects – Scanner & Scale Only
- 1.7.7. After the restart has completed, run PSC OPOS Configuration by clicking from the desktop “Start>All Programs>PSC_OPOS>PSC OPOS Configuration”
 - 1.7.7.1. Click Read
 - 1.7.7.2. Make sure English, Zero Valid and ASCII are selected and click Write

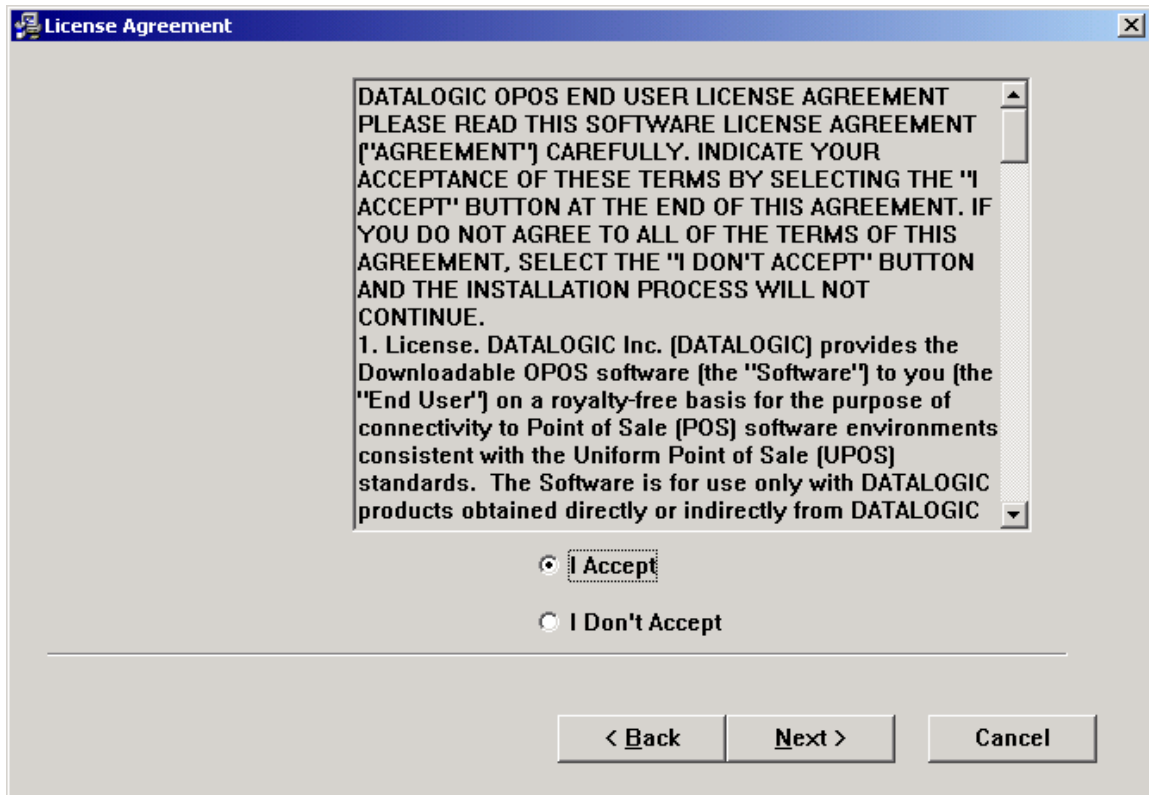
1.8. DataLogic 8200/8300/8400/8500 USB OPOS new driver installation (if not using the RS232 connection)

Note: The RS232 connection does not require OPOS

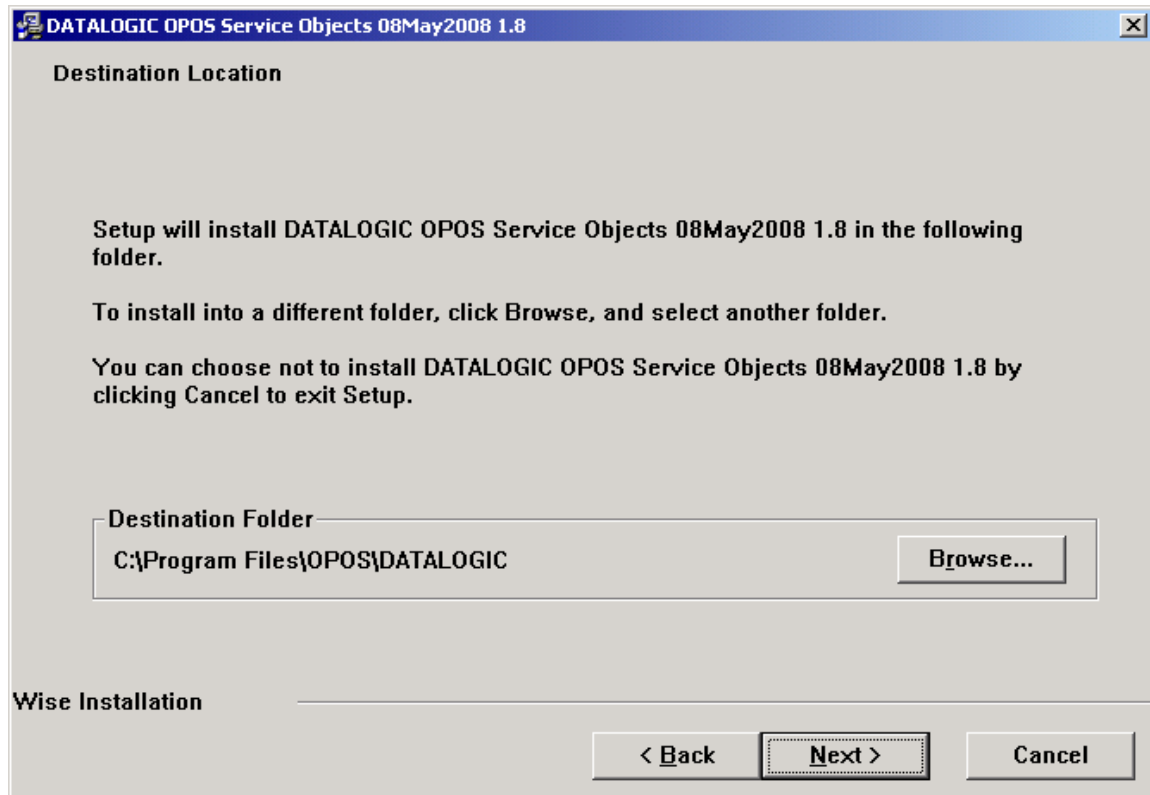
- 1.8.1. Scan the DataLogic Labels (switch then Interface Type = IBM-USB and then switch again)
- 1.8.2. Shutdown the TeamPoS 3000XE prior to plugging in the PSC Scanner/Scale
- 1.8.3. Plug the 12v powered USB cable into an available powered USB port on the back of the TeamPoS 3000XE
- 1.8.4. Turn on the TeamPoS 3000XE
- 1.8.5. The device will be discovered by the operating system and install it as a HID device
- 1.8.6. Run the program
DATALOGIC_OPOS_Installation_1_8_08May2008_ScanMaster_ISS45.exe located on the StoreNext Web site
- 1.8.7. The following DATALOGIC OPOS Service Objects 08May2008 1.8 welcome screen is displayed



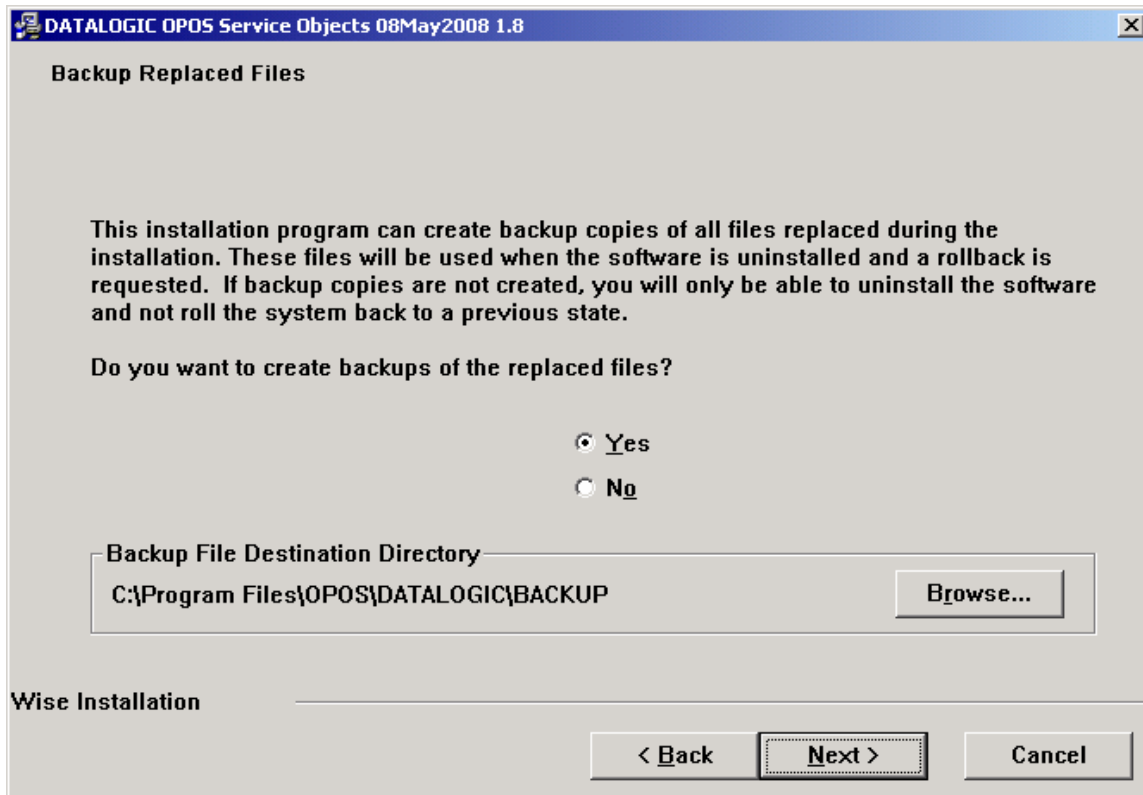
1.8.8. Click Next and the License Agreement screen is displayed



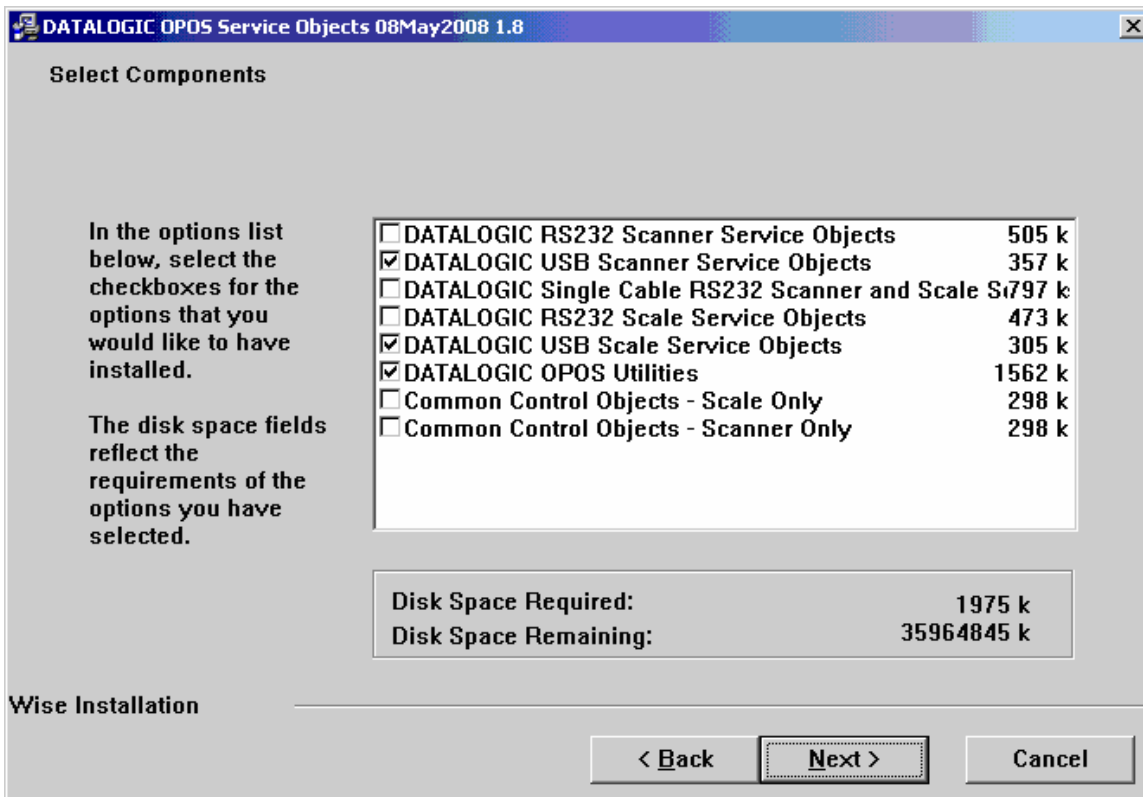
1.8.9. Click I Accept, click Next and the Destination Location screen is displayed



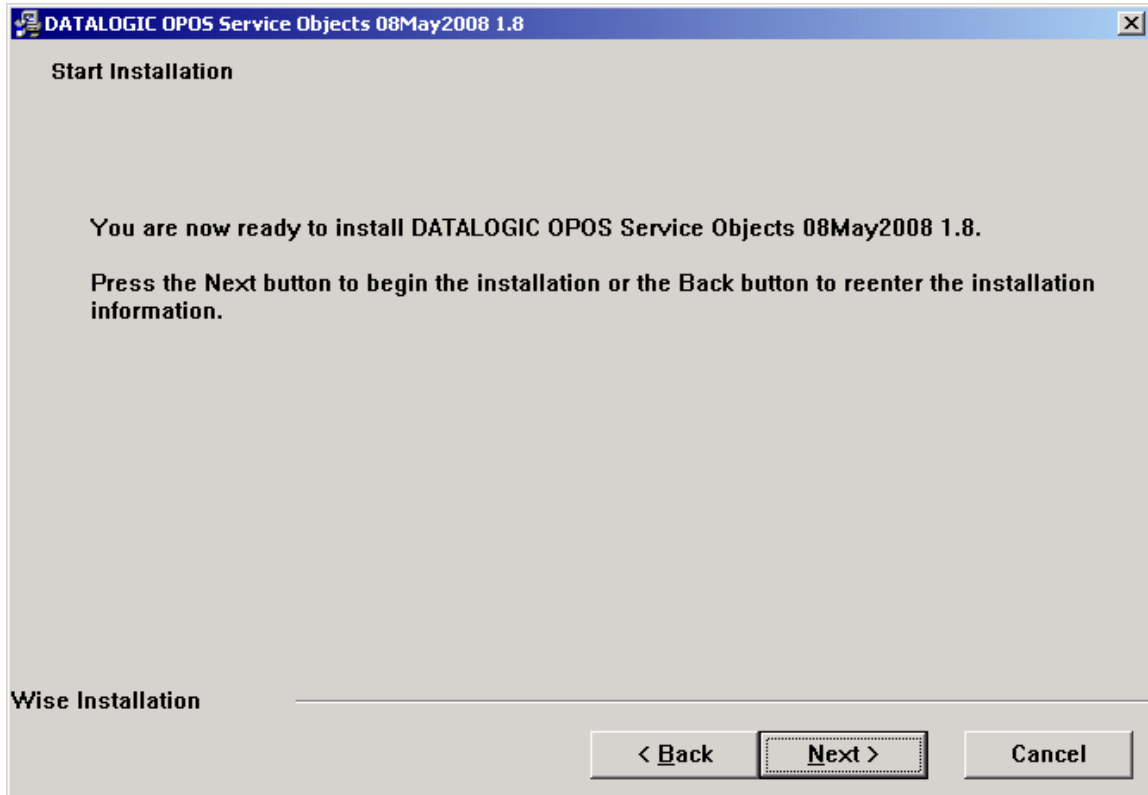
1.8.10. Click Next and the Backup Replaced Files screen is displayed



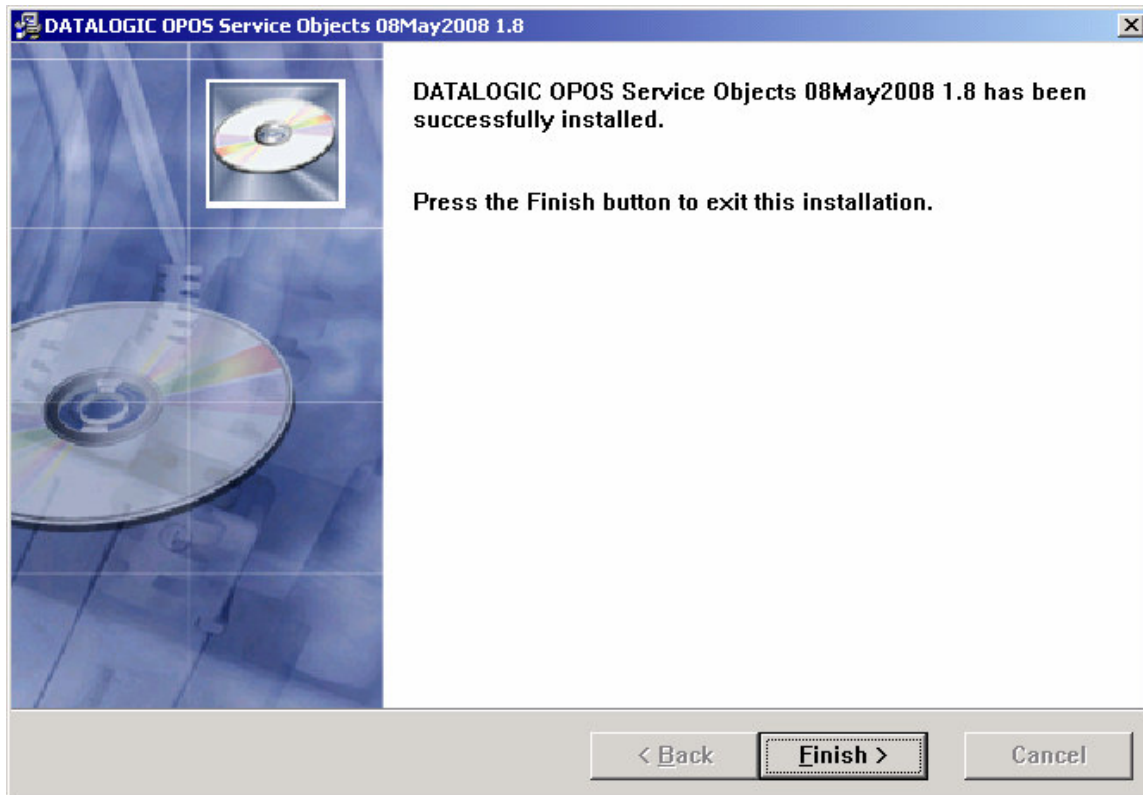
1.8.11. Click Next and the Select Components screen is displayed



1.8.12. Uncheck all the RS232 selections as ISS45 software only uses OPOS on the USB connected Scanner/Scale. Leave the Common Control Objects unchecked since they are provided when the Common Controls were installed in section 1.1. Click Next and the Start Installation screen is displayed



1.8.13. Click Next and the successfully installed screen is displayed



1.8.14. Click Finish to close the screen

1.9. PSC 6500 Hand Held Scanner installation

- 1.9.1. Scan the PSC Labels (start then Interface Type = IBM-USB and then end)
- 1.9.2. Plug the PSC 6500 Hand Held into a standard USB port available on the back of the TeamPoS 3000XE
- 1.9.3. The device will be discovered by the operating system and install it as a HID device
- 1.9.4. Run the program
PSC_OPOS_USB_Installation_1_8_0_34_28Feb2007.exe located on the V7.1.2.0-050 distribution CD in the OPOS\PSC folder to install the OPOS for the PSC scanner

NOTE: At the Select Components screen make sure you also check the Common Control Objects – Scanner & Scale Only

1.10. PSC 1000i Table Scanner installation

- 1.10.1. Scan the PSC Labels (start then Interface Type = IBM-USB and then end)
- 1.10.2. Plug the PSC 1000i Table scanner into a standard USB port available on the back of the TeamPoS 3000XE
- 1.10.3. The device will be discovered by the operating system and install it as a HID device

- 1.10.4. Run the program
PSC_OPOS_USB_Installation_1_8_0_34_28Feb2007.exe located on the V7.1.2.0-050 distribution CD in the OPOS\PSC folder to install the OPOS for the PSC scanner

NOTE: At the Select Components screen make sure you also check the Common Control Objects – Scanner & Scale Only

1.11. TPG A776 or A794 USB Printer Installation

- 1.11.1. To extract the native USB TPG driver, unzip file 189-1200109M.zip located in the DREN-1200109M.zip file to the C:\TPG folder. The file can be found on the V7.1.2.0-050 distribution CD in the OPOS\TPG folder or from the TPG Web site <http://www.tpgprinters.com/> (Service and support tab / downloads / Publication/Drivers then A776)
- 1.11.2. Shutdown the TeamPoS 3000XE prior to plugging in the TPG printer
- 1.11.3. Plug the 24v powered USB cable into the 24v powered USB port on the back of the TeamPoS 3000XE
- 1.11.4. Turn on the TeamPoS 3000XE
- 1.11.5. The driver installation wizard starts up. The TPG driver to install is in the folder “C:\TPG” that 189-1200109M above was extracted to
- 1.11.6. Unzip file 189-1200308D.zip located in the DREN-1200308D.zip file to the C:\TPG folder. The file can be found on the V7.1.2.0-050 distribution CD in the OPOS\TPG folder or from the TPG Web site <http://www.tpgprinters.com/> (Service and support tab / downloads / Publication/Drivers then A776)
- 1.11.7. Run install.bat in the TPG folder that 189-1200308D was extracted to above and select either A – A794 or E – A776 printers
- 1.11.8. Use Regedit to change the following two parameters
 - 1.11.8.1. HKLM\SOFTWARE\OLEForRetail\ServiceOPOS\POSPrinter
 - 1.11.8.1.1. Then either A774 or A794
 - 1.11.8.1.2. Change Port to USB
 - 1.11.8.1.3. Change Protocol to USB

1.12. D22_D25 Keyboard, MSR and Key lock Installation

- 1.12.1. Connect the D22_D25 Keyboard on the side of the D22 or D25 Monitor
- 1.12.2. Connect a separate USB A to USB B cable to the Register and the Monitor
- 1.12.3. The installation document can be found in the TeamPoS3000-XE_Software_Support\Drivers\Keyboards\D22 and D25 Keypad_MSR
- 1.12.4. Map the keys on the keyboard using the KeyEdit.exe program located in the folder “ TeamPoS3000-XE_Software_Support\Drivers\Keyboards\D22 and D25 Keypad_MSR\KB ReMapper”.
- 1.12.5. Load OPOS for the key lock and the MSR by running the file FTXSOPOS_1_10_2.exe located in the folder “ TeamPoS3000-XE_Software_Support\Drivers\OPOS\FTXSOPOS “

- 1.12.6. During the installation of the OPOS select Platform Type TeamPos 3000 and D22_D25 MSR, Lock
- 1.13. HyperCom 4100/4250 USB Installation

Note: This section only applies if you are using a USB connected HyperCom 4100/4250 EFT terminal

Software Installation

- 1.13.1. On the WinEPS installation CD, browse to the \OpenEPS\SCAT Code\Hyp4100 or 4250\ directory
- 1.13.2. Extract the "4100 USB Driver Installation (40_RS232ToUSBDriver).zip" file to a convenient location on the POST, such as the desktop
- 1.13.3. Run the RS232toUSBDriver.msi by double clicking on it
- 1.13.4. Click Next
- 1.13.5. Select I Agree and click Next
- 1.13.6. Use the default directory path during the installation
- 1.13.7. Select everyone
- 1.13.8. Click Next
- 1.13.9. Confirm the installation by clicking Next
- 1.13.10. You may see an error on the screen at this point of the installation but this can be ignored as it is part of the installation
- 1.13.11. Installation complete screen appears

Hardware USB Mode Setup

- 1.13.12. On the HyperCom, tap the upper left corner, upper right corner and the upper left corner again
- 1.13.13. If you are prompted for a password, enter "multilane" or "685845263" on the number pad
- 1.13.14. At the Main menu, select ERC Port
- 1.13.15. Under the ERC menu, select USB
- 1.13.16. Select USB and then press the apply now button
- 1.13.17. Reboot the HyperCom terminal
- 1.13.18. The startup screen should now list USB for the communication type

2. Peripherals Notes

Note: The old RS232 connected 92R, 92M, 92U keyboards or VF50 2x20 display can not be used on the TP3000XE

2.1. COM1

- 2.1.1. COM1 is the only physical com port on the TP3000XE

2.2. COM3, 4 and 5 (Optional Combo I/O board)

- 2.2.1. COM5 is the 24V Powered RS232 Printer port on the TeamPoS 3000XE

- 2.2.2. COM5 must be remapped to COM2 when using a standard NON-OPOS printer because ISS45 native printer drivers only support RS232 printers up to COM4.
- 2.2.3. The following procedure is used to remap COM5 to COM2 using windows device manager
 - 2.2.3.1. Open windows Control Panel
 - 2.2.3.2. Click System
 - 2.2.3.3. Click the Hardware tab
 - 2.2.3.4. Click Device Manager
 - 2.2.3.5. Click + Ports (COM & LPT)
 - 2.2.3.6. Double click Communications Port (COM5)
 - 2.2.3.7. Click Port Settings tab
 - 2.2.3.8. Click Advanced
 - 2.2.3.9. Use the COM Port Number dropdown to select COM2
 - 2.2.3.10. Click OK

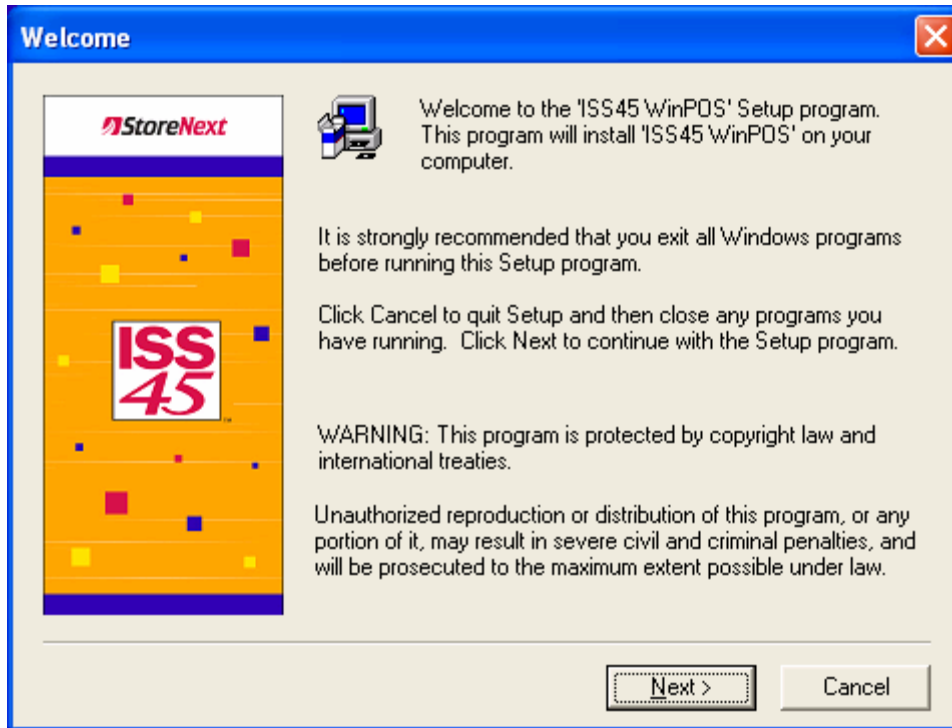
2.3. Cash Drawer Connection

- 2.3.1. Cash drawers must be connected to the cash drawer connection on the back of the printer
- 2.3.2. Cash drawers may be sensed backwards in ISS45 when connected to some models of printers. Open appears shut and shut appears open. If this applies to your installation, add the following line in the ISS45 WinPOS.ini file to reverse how the drawer is seen.
 - DrawerNegativeCheck=Yes

3. ISS45 Installation on the TeamPoS 3000XE

3.1. Starting ISS45 WinPOS installation

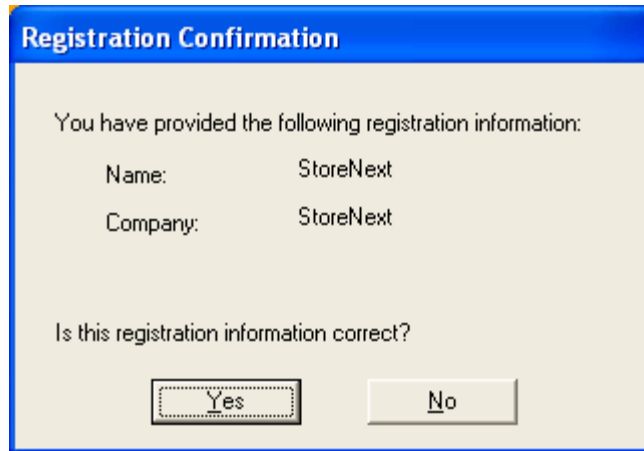
- 3.1.1. Use the following to start the WinPOS installation from the ISS45 software release
- 3.1.2. Click Start | Run
- 3.1.3. Click on and locate the file Setup.exe in the CD Drive: folder WinPOS\Disk1 (example D:\WinPOS\Disk1 folder)
- 3.1.4. Double click on Setup which puts it into (Run – Open: D:\WinPOS\Disk1\Setup.exe
CAUTION: Ensure that the line indicates Setup.exe and not Setup.bat
 If the line indicates Setup.bat then browse back and select the correct Setup.exe file
- 3.1.5. Click to launch the WinPOS installation
- 3.1.6. The following (Welcome) screen is displayed



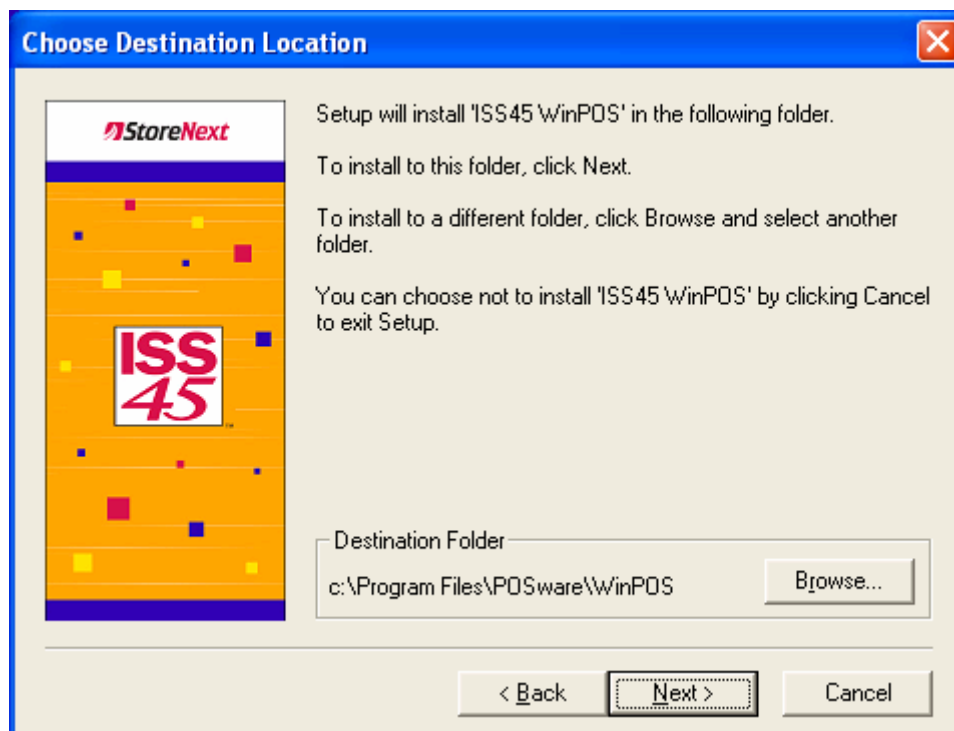
3.1.7. Click **Next** and the (User Information) screen is displayed



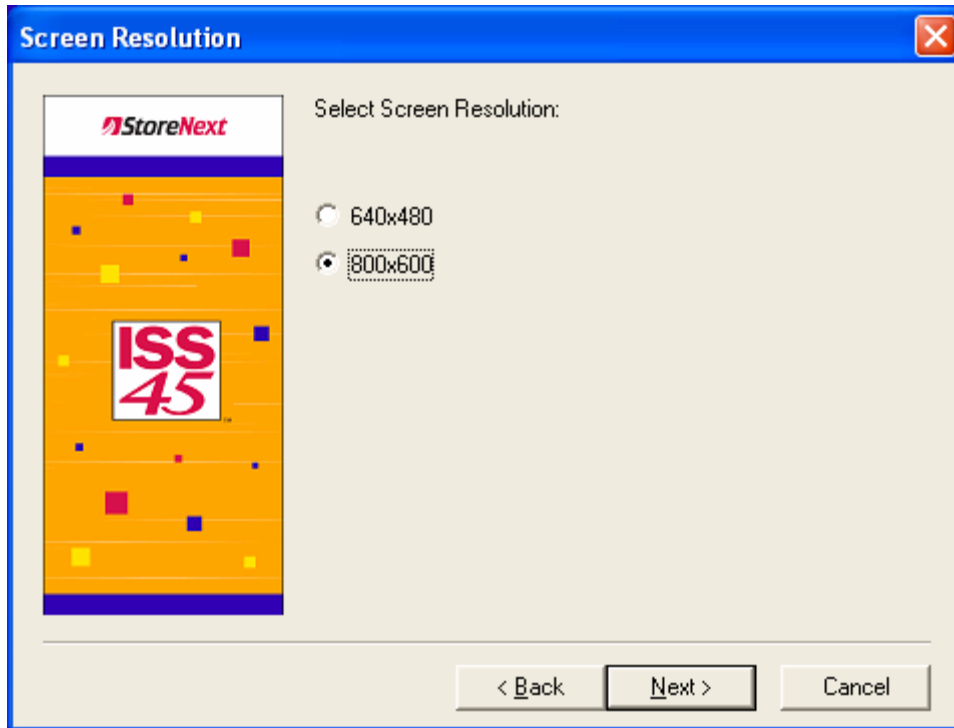
3.1.8. Change the information if so desired, click **Next** and the (Registration Confirmation) screen is displayed



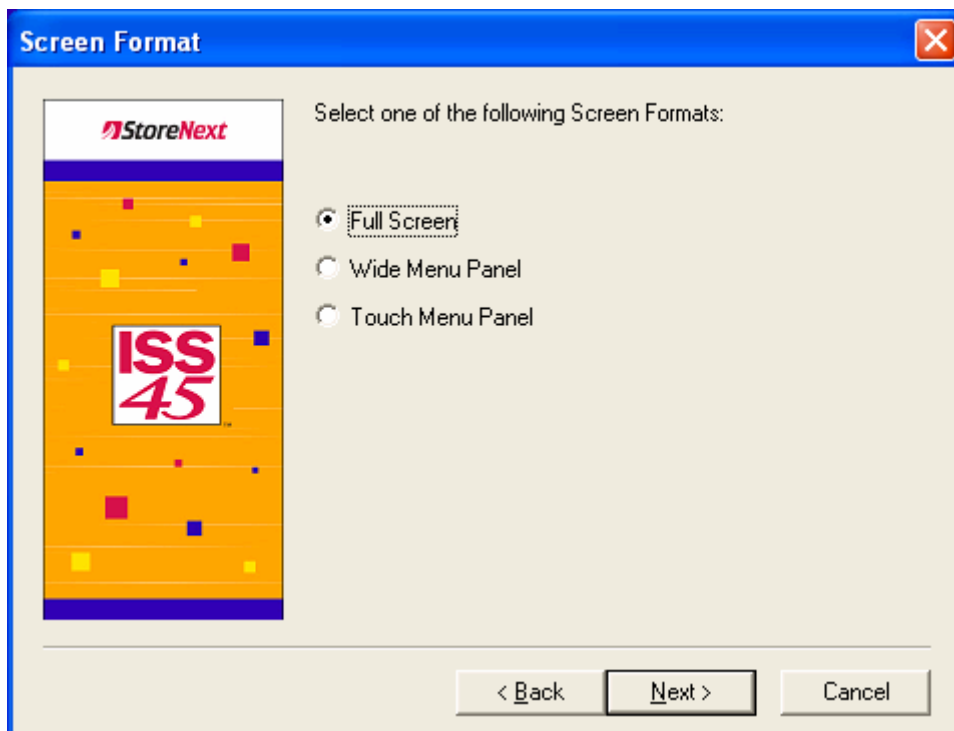
3.1.9. Click **Yes** and the (Choose Destination Location) screen is displayed



3.1.10. Click **Next** and the (Screen Resolution) screen is displayed



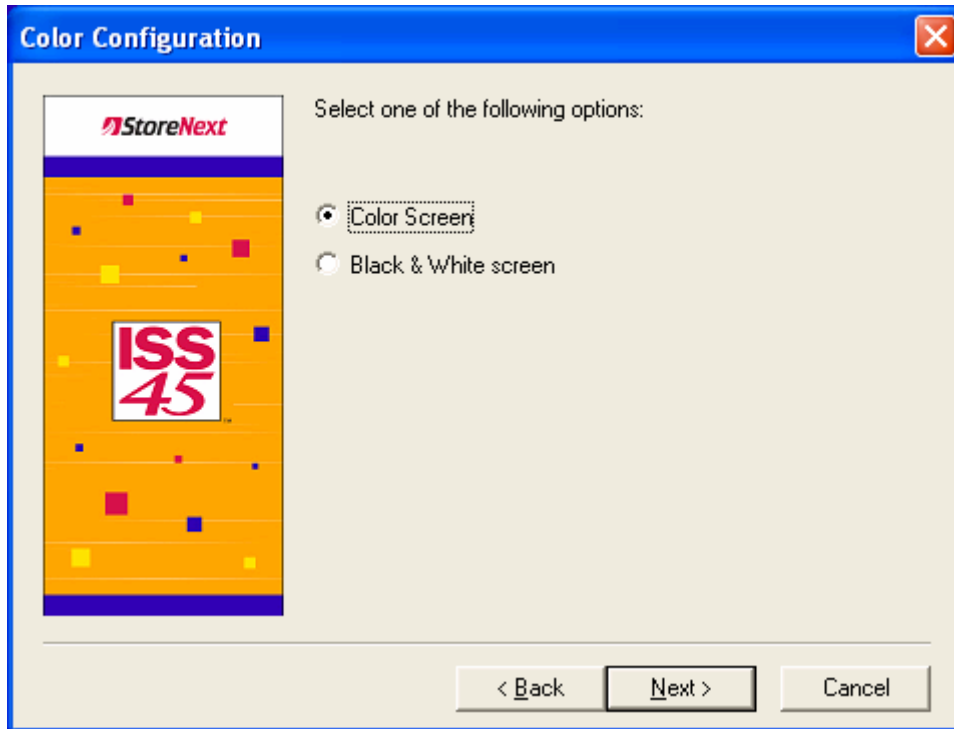
3.1.11. Ensure that 800x600 is selected, click **Next** and the (Screen Format) screen is displayed



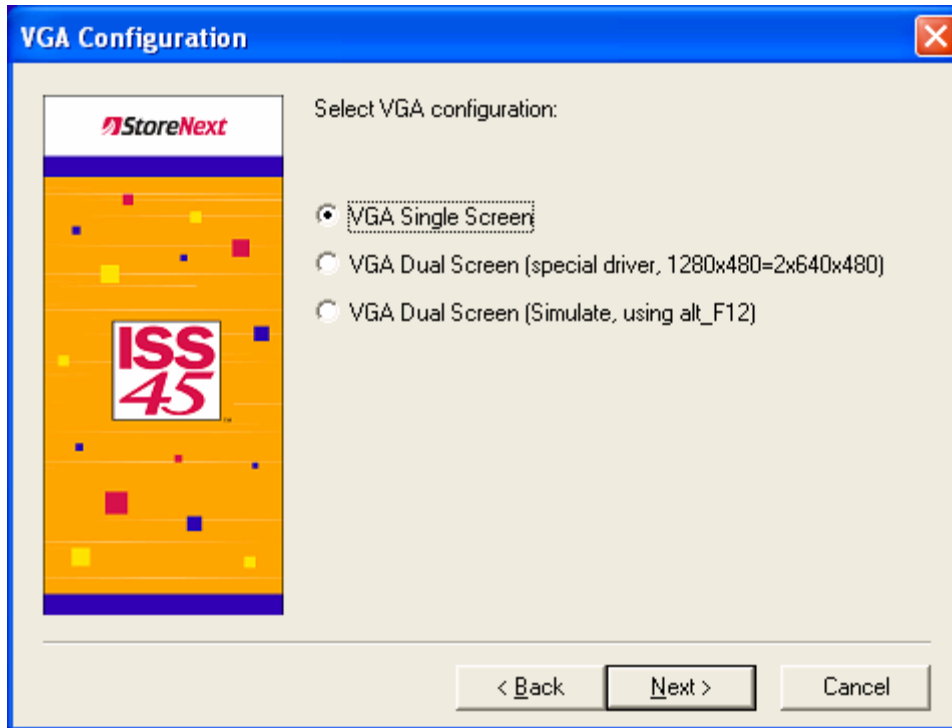
3.1.12. Select the configuration for your equipment setup

3.1.12.1. Full Screen does not provide any touch screen capabilities

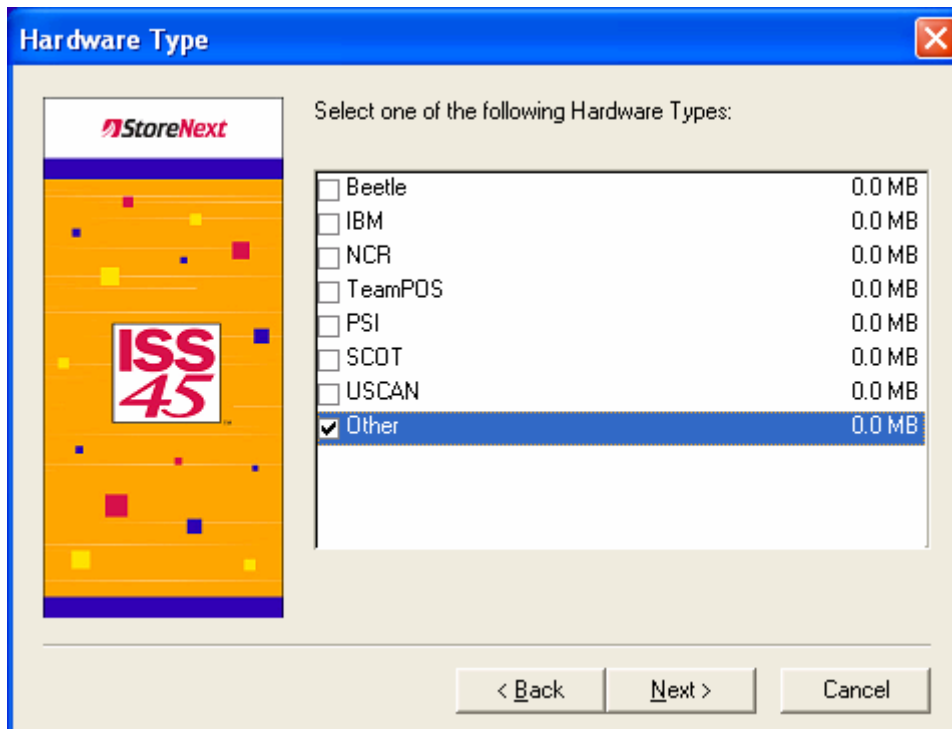
- 3.1.12.2. Wide Menu Panel provides limited touch and requires some form of a keyboard (example: The TeamKey D22_D25 on the Fujitsu D22 or D25 display)
- 3.1.12.3. Touch Menu Panel provides full touch screen support and does not required any additional keyboards
- 3.1.13. Click **Next** and the (Color Configuration) screen is displayed



- 3.1.14. Ensure Color Screen is selected, click **Next** and the (VGA Configuration) screen is displayed



3.1.15. Ensure VGA Single Screen or VGA Dual Screen is selected, click **Next** and the (Hardware Type) screen is displayed



3.1.16. **NOTE:** This step is critical and you need to ensure type **Other** is selected and **NOT TeamPOS**, click **Next** and the (POS Terminal Number) screen is displayed

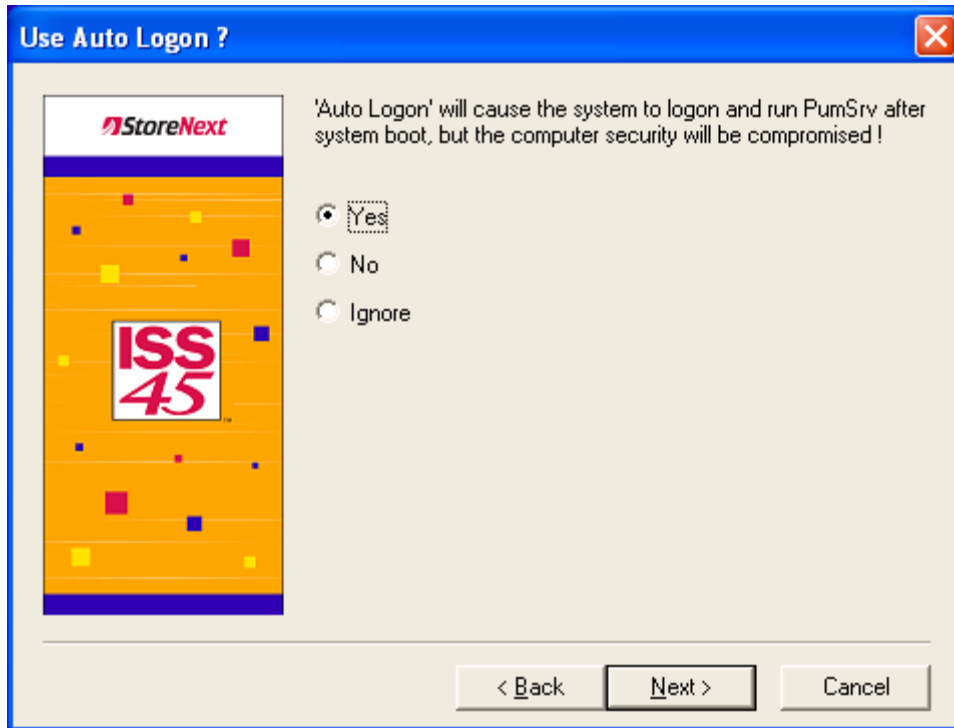
POS Terminal Number

Enter POS Terminal Number
[Valid range: 1-240]

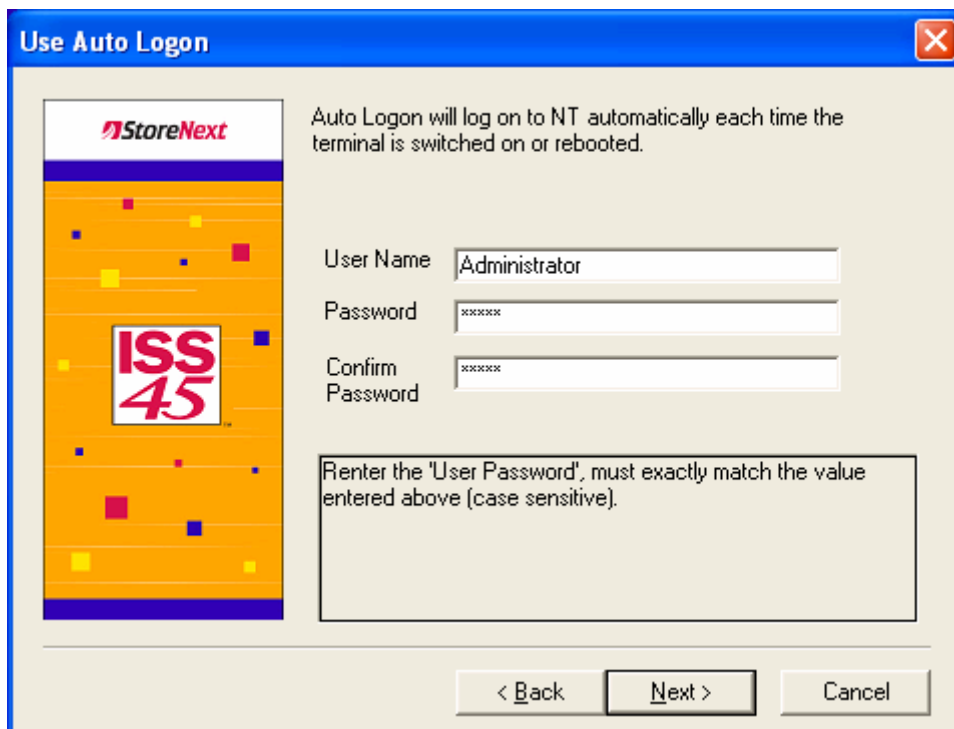
POS No.: 4

< Back Next > Cancel

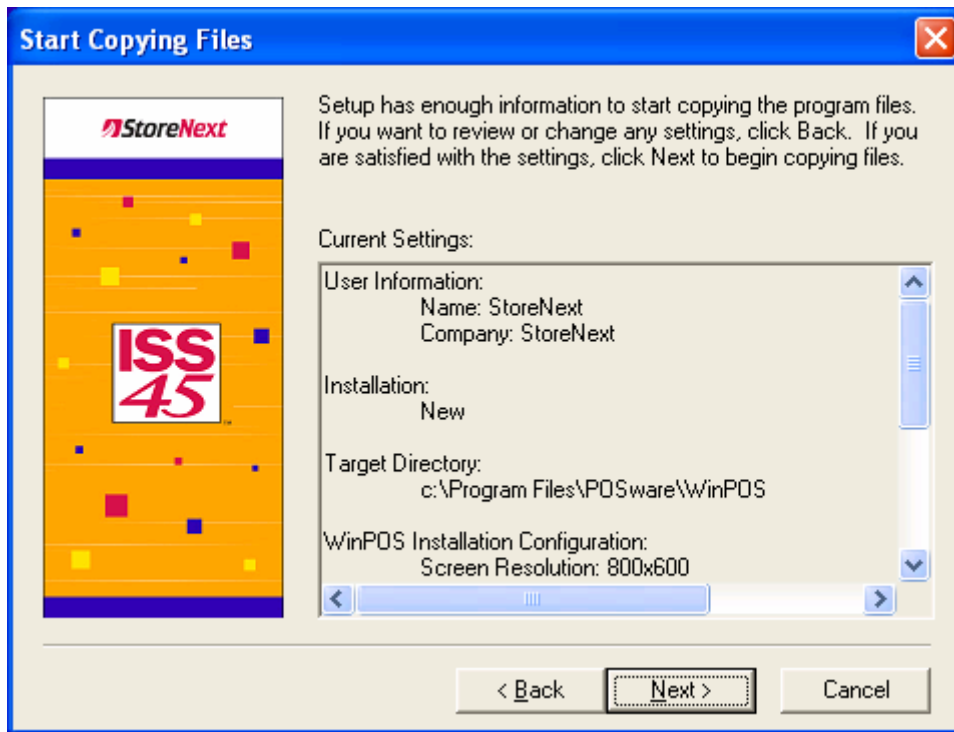
3.1.17. Enter the POS terminal number, click **Next** and the (Use Auto Logon?) screen is displayed



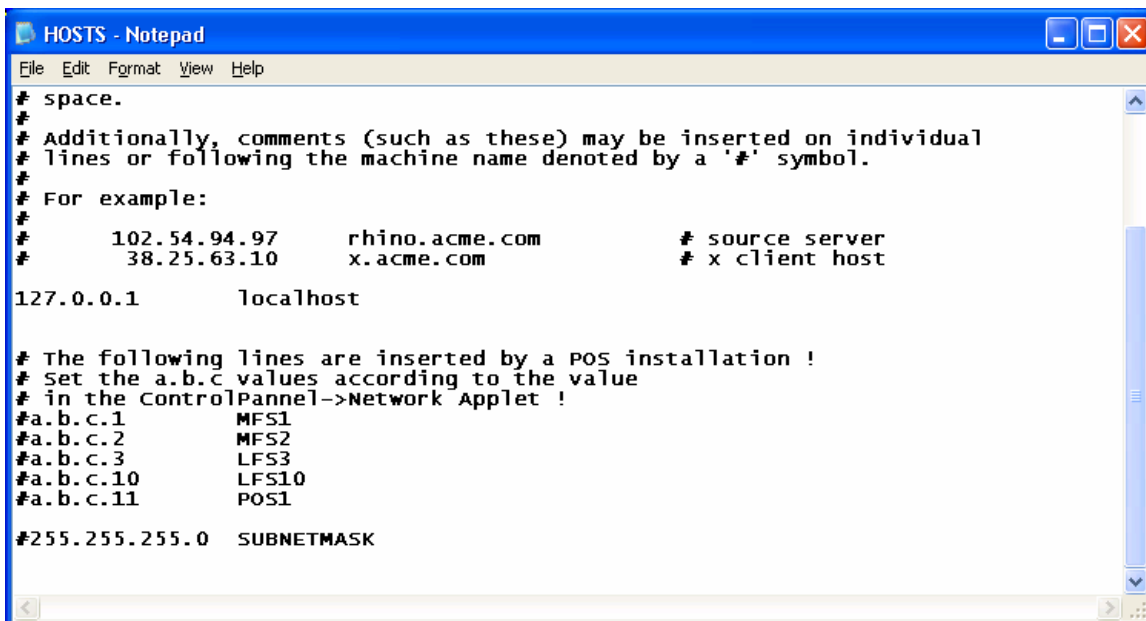
3.1.18. Ensure Yes is selected, click **Next** and the next (Use Auto Logon) screen is displayed



3.1.19. Fill in the Password and Confirm for your Administrator, click **Next** and the (Start Copying Files) screen is displayed



3.1.20. Review the information, click **Next** and the (HOSTS – Notepad) screen is displayed

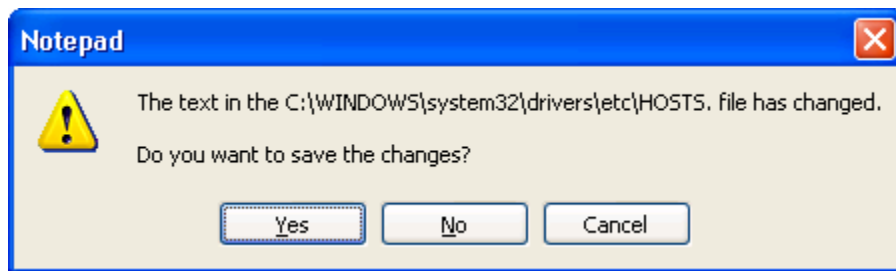


3.1.21. Make the necessary changes to the HOSTS file to match your network IP addressing and remove the # symbol on the items required for your store environment (example: see the following edited screen)

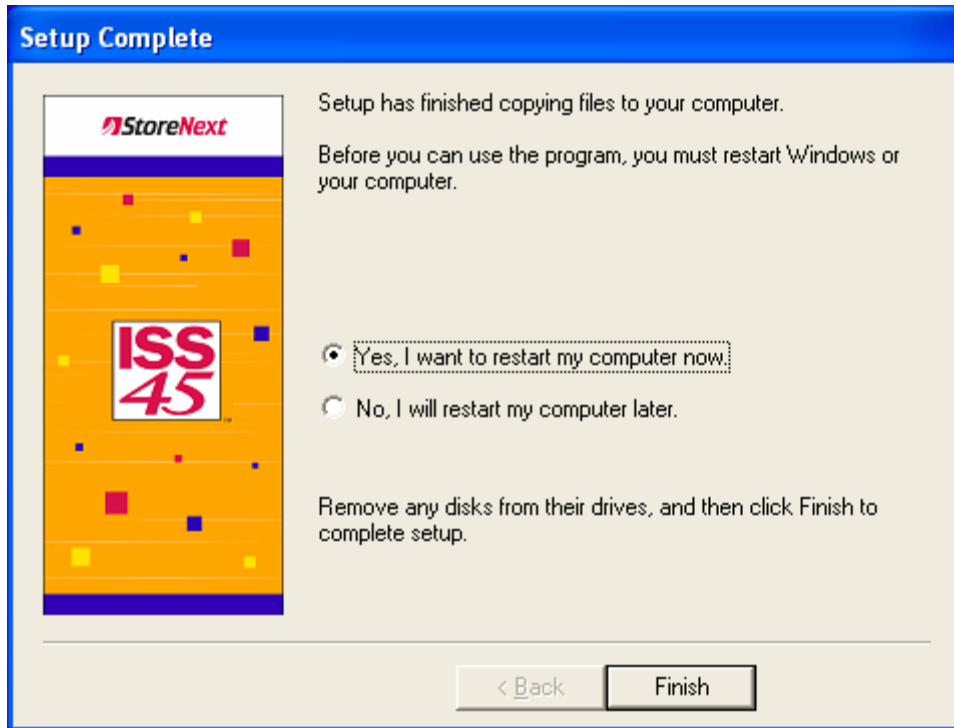
```
HOSTS - Notepad
File Edit Format View Help
# space.
#
# Additionally, comments (such as these) may be inserted on individual
# lines or following the machine name denoted by a '#' symbol.
#
# For example:
#
#       102.54.94.97      rhino.acme.com      # source server
#       38.25.63.10     x.acme.com          # x client host
127.0.0.1      localhost

# The following lines are inserted by a POS installation !
# Set the a.b.c values according to the value
# in the ControlPannel->Network Applet !
129.103.76.1   MFS1
129.103.76.2   MFS2
129.103.76.3   LFS3
129.103.76.10 LFS10
129.103.76.11 POS1
255.255.255.0 SUBNETMASK
```

3.1.22. Select File | Exit after making your changes and the following is displayed



3.1.23. Click **Yes** and the installation continues until the (Setup Complete) screen is displayed



3.1.24. Ensure Yes is selected and click Finish

3.1.25. The computer will restart and start loading ISS45

3.1.26. Exit to the Windows Desktop when the ISS45 load has finished for further installation (example: adding payments, Xinetix, Catalina, applying patches)

4. ISS45 Peripheral Setup for Connected Devices on the TP3000XE

4.1. 92U USB Keyboard

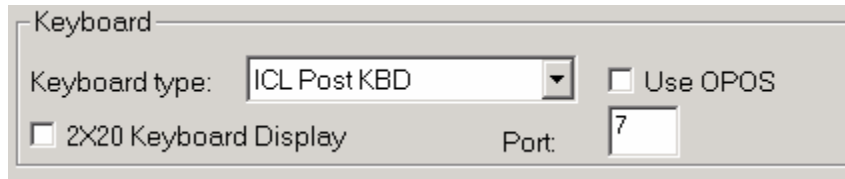
NOTE: The 92U keyboard does not use OPOS. Look in windows device manager and see what COM port is showing for the 92U USB connected keyboard. This should normally be COM7 if changed from the default setting COM6 during the install above for the 92U

4.1.1. ISS45 V7 Configuration

4.1.1.1. In ISS45 V7 POST Configuration 2 screen set the Port to 7 or the setting that shows in windows device manager for the 92U keyboard COM port

4.1.2. ISS45 V8 Configuration

4.1.2.1. In ISS45 V8 Post Configuration screen WinPOS H/W Tab set the Keyboard type to ICL Post KBD and Port to 7 or the setting that shows in windows device manager for the 92U keyboard COM port



4.2. VF60 USB 2x20 Display

4.2.1. ISS45 V7 Configuration

- 4.2.1.1. In ISS45 V7 POST Configuration 1 screen leave COM 0, IRQ 0, Type None and Baud rate None



- 4.2.1.2. In the ISS45 V7 WinPOS.ini file, add the following two lines

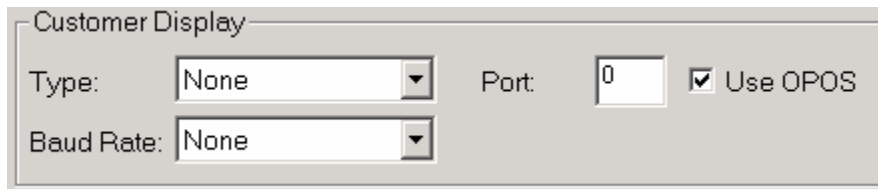
NOTE: The following lines are case sensitive

OposLineDisplay=Yes

DefaultLineDisplayName=VF60-1

4.2.2. ISS45 V8 Configuration

- 4.2.2.1. In ISS45 V8 Post Configuration screen WinPOS H/W Tab set Customer Display Type None, Baud Rate None, Port 0 and check Use OPOS



- 4.2.2.2. In ISS45 V8 Post Configuration screen E-Ticket – OPOS tab set the OPOS Line Display Driver Name to VF60-1



4.3. Epson 6000IIU/6000IIIU USB Printer, MICR and Connected Cash Drawer

4.3.1. ISS45 V7 Configuration (Prior to V7.1.3.0-050 release)

- 4.3.1.1. In ISS45 V7 POST Configuration 1 screen set type EPSON H6000, Port None, MICR reader in use checked if your printer has one, OPOS checked and check Enable Check Flip if your printer supports flip



- 4.3.1.2. In ISS45 V7 POST Configuration 1 screen set Drawer in use checked and connected to printer checked

```
Drawer in use.....▶ [N]
connected to printer.▶ [N]
Dual drawer enabled..▶ [ ]
```

4.3.1.3. In the ISS45 V7 WinPOS.ini file, add the following lines

NOTE: The following lines are case sensitive

NOTE: If the LDN name installed above was TM-H6000IIU

DefaultPrinterName=TM-H6000IIU

OposMicr=Yes

DefaultMicrName=TM-H6000IIU

OposDrawer=Yes

DefaultDrawerName=TM-H6000IIU

NOTE: If the LDN name installed above was TM-H6000IIIU

DefaultPrinterName=TM-H6000IIIU

OposMicr=Yes

DefaultMicrName=TM-H6000IIIU

OposDrawer=Yes

DefaultDrawerName=TM-H6000IIIU

4.3.2. ISS45 V7 Configuration (V7.1.3.0-050 and above)

4.3.2.1. In ISS45 V7 POST Configuration 1 screen set type EPSON H6000, Port None, MICR reader in use checked if your printer has one, OPOS checked and check Enable Check Flip if your printer supports flip

```
Printer:
Type.....▶ EPSON H6000 [↓]
Port.....▶ None [↓]
MICR reader in use...▶ [X] OPOS..▶ [X]
Enable Check Flip....▶ [ ]
```

4.3.2.2. In ISS45 V7 POST Configuration 1 screen set Drawer in use checked and connected to printer checked

```
Drawer in use.....▶ [X]
connected to printer.▶ [X]
Dual drawer enabled..▶ [ ]
```

4.3.2.3. In the ISS45 V7 WinPOS.ini file, add the following lines

NOTE: The following lines are case sensitive

NOTE: If the LDN name installed above was TM-H6000IIU

DefaultPrinterName=TM-H6000IIU

OposMicr=Yes

DefaultMicrName=TM-H6000IIU

OposDrawer=Yes

DefaultDrawer1Name=TM-H6000IIU

NOTE: If the LDN name installed above was TM-H6000IIIU

DefaultPrinterName=TM-H6000IIIU

OposMicr=Yes

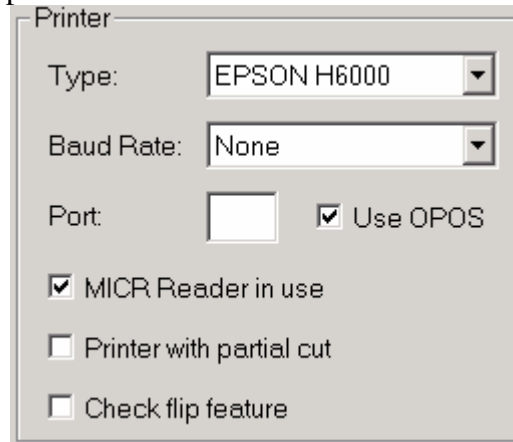
DefaultMicrName=TM-H6000IIIU

OposDrawer=Yes

DefaultDrawer1Name=TM-H6000IIIU

4.3.3. ISS45 V8 Configuration

- 4.3.3.1. In ISS45 V8 Post Configuration screen WinPOS H/W Tab set Printer Type EPSON H6000, Baud Rate: None, Port blank, check OPOS , check MICR if printer has one and Check flip if printer supported



Printer

Type: EPSON H6000

Baud Rate: None

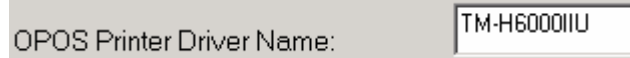
Port: Use OPOS

MICR Reader in use

Printer with partial cut

Check flip feature

- 4.3.3.2. In ISS45 V8 Post Configuration screen E-Ticket – OPOS tab set the OPOS Printer Driver Name to TM-H6000IIU or TMH6000IIIU based on the LDN used during Printer installation



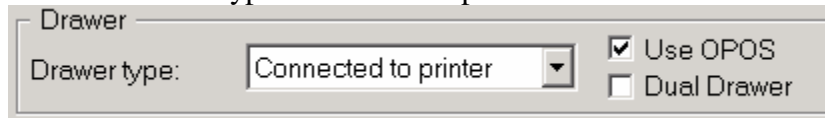
OPOS Printer Driver Name: TM-H6000IIU

- 4.3.3.3. In ISS45 V8 Post Configuration screen E-Ticket – OPOS tab set the OPOS MICR Driver Name to TM-H6000IIU or TMH6000IIIU based on the LDN used during MICR installation



OPOS MICR Driver Name: TM-H6000IIU Use OPOS MICR

- 4.3.3.4. In ISS45 V8 Post Configuration screen WinPOS H/W Tab set Drawer type Connected to printer and Use OPOS checked

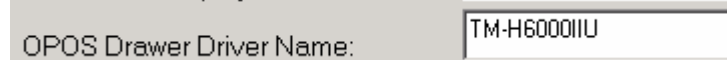


Drawer

Drawer type: Connected to printer Use OPOS

Dual Drawer

- 4.3.3.5. In ISS45 V8 Post Configuration screen E-Ticket – OPOS tab set the OPOS Drawer Driver Name to TM-H6000IIU or TM-H6000IIIU based on the LDN used during printer installation



OPOS Drawer Driver Name: TM-H6000IIU

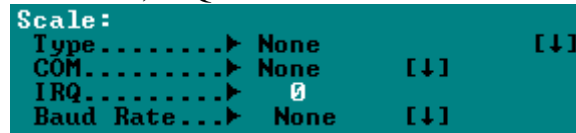
4.4. PSC/DataLogic 8200, 8300, 8400 or 8500 USB Scanner and Scale configuration

4.4.1. ISS45 V7 Configuration

- 4.4.1.1. In ISS45 V7 POST Configuration 1 screen set Scanner COM 0, IRQ 0, Baud Rate None, Data Bits 0, Parity None and Handshake unchecked



- 4.4.1.2. In ISS45 V7 POST Configuration 1 screen set Scale Type None, COM None, IRQ 0 and Baud Rate None



- 4.4.1.3. In the ISS45 V7 WinPOS.ini file, add the following lines

NOTE: The following lines are case sensitive

OposScanner=Yes

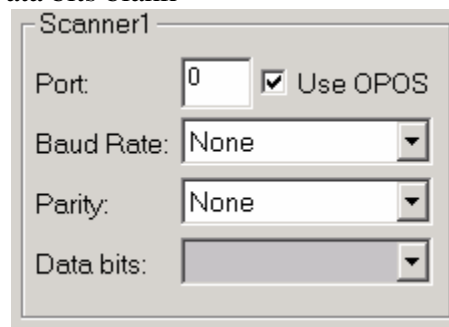
DefaultScannerName=TableScanner

OposScale=Yes

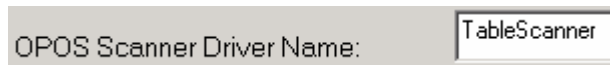
DefaultScaleName=TableScale

4.4.2. ISS45 V8 Configuration

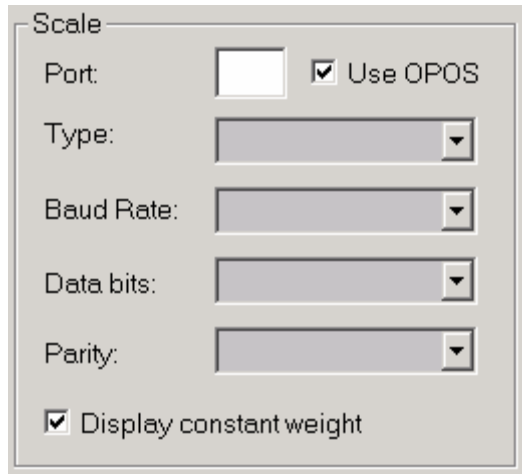
- 4.4.2.1. In ISS45 V8 Post Configuration screen WinPOS H/W Tab set Scanner1 Port 0, check Use OPOS, Baud Rate None, Parity None and Data bits blank



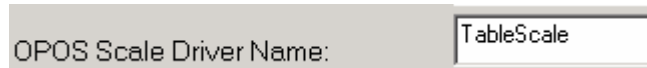
- 4.4.2.2. In ISS45 V8 Post Configuration screen E-Ticket – OPOS tab set OPOS Scanner Driver Name to TableScanner



- 4.4.2.3. In ISS45 V8 Post Configuration screen WinPOS H/W Tab set Scale Port blank, check Use OPOS, Type blank, Baud Rate blank, Data bits blank, Parity blank and check Display constant weight



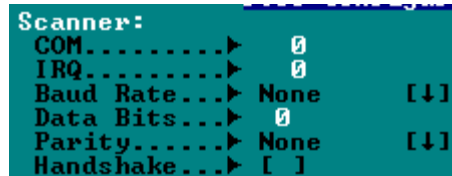
- 4.4.2.4. In ISS45 V8 Post Configuration screen E-Ticket – OPOS tab set OPOS Scale Driver Name to TableScale



4.5. PSC 6500 Hand Held USB Scanner

4.5.1. ISS45 V7 Configuration

- 4.5.1.1. In ISS45 V7 POST Configuration 1 screen set Scanner COM 0, IRQ 0, Baud Rate None, Data Bits 0, Parity None and Handshake unchecked



- 4.5.1.2. In the ISS45 V7 WinPOS.ini file, add the following lines

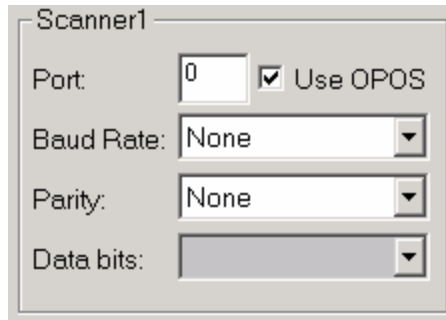
NOTE: The following lines are case sensitive

OposScanner=Yes

DefaultScannerName=HandScanner

4.5.2. ISS45 V8 Configuration

- 4.5.2.1. In ISS45 V8 Post Configuration screen WinPOS H/W Tab set Scanner1 Port 0, check Use OPOS, Baud Rate None, Parity None and Data bits blank



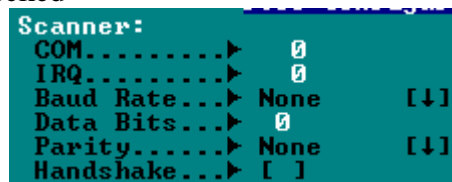
4.5.2.2. In ISS45 V8 Post Configuration screen E-Ticket – OPOS tab set OPOS Scanner Driver Name to HandScanner



4.6. PSC 1000i Table USB Scanner

4.6.1. ISS45 V7 Configuration

4.6.1.1. In ISS45 V7 POST Configuration 1 screen set Scanner COM 0, IRQ 0, Baud Rate None, Data Bits 0, Parity None and Handshake unchecked



4.6.1.2. In the ISS45 V7 WinPOS.ini file, add the following lines

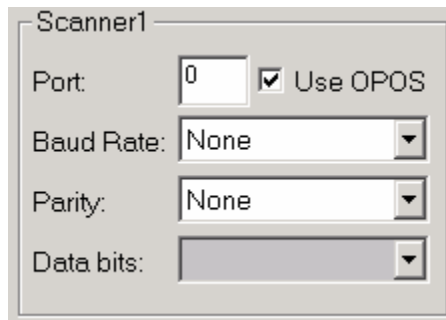
NOTE: The following lines are case sensitive

OposScanner=Yes

DefaultScannerName=TableScanner

4.6.2. ISS45 V8 Configuration

4.6.2.1. In ISS45 V8 Post Configuration screen WinPOS H/W Tab set Scanner1 Port 0, check Use OPOS, Baud Rate None, Parity None and Data bits blank



4.6.2.2. In ISS45 V8 Post Configuration screen E-Ticket – OPOS tab set OPOS Scanner Driver Name to HandScanner

OPOS Scanner Driver Name:

4.7. Dual USB OPOS DataLogic Scanner Support (V8.1.3.2-050 and above)

4.7.1. ISS45 V8.1.3.2-050 and Above Configuration

Note: One scanner must be set as a hand scanner and the other scanner must be set as a table scanner

4.7.1.1. In ISS45 V8 Post Configuration screen WinPOS H/W Tab set Scanner1 & Scanner2 check Use OPOS

| Scanner1 | Scanner2 |
|---|---|
| Port: <input type="text"/> <input checked="" type="checkbox"/> Use OPOS | Port: <input type="text"/> <input checked="" type="checkbox"/> Use OPOS |
| Baud Rate: <input type="text"/> | Baud Rate: <input type="text"/> |
| Parity: <input type="text"/> | Parity: <input type="text"/> |
| Data bits: <input type="text"/> | Data bits: <input type="text"/> |

4.7.1.2. In ISS45 V8 Post Configuration screen E-Ticket – OPOS tab set OPOS Scanner 1 Driver Name to TableScanner
OPOS Scanner 2 Driver Name to HandScanner

| | |
|-----------------------------|---|
| OPOS Scanner 1 Driver Name: | <input type="text" value="TableScanner"/> |
| OPOS Scanner 2 Driver Name: | <input type="text" value="HandScanner"/> |

4.8. TPG A776 or A794 USB Printer

4.8.1. ISS45 V7 Configuration (Prior to V7.1.3.0-050)

4.8.1.1. In ISS45 V7 POST Configuration 1 screen set Printer type OPOS Generic, Port None, MICR reader in use checked for the A776 printer and unchecked for the A794 printer, OPOS checked and Enable Check Flip unchecked

```

Printer:
Type.....> Opos Generic [↕]
Port.....> None [↓]
MICR reader in use...> [✓] OPOS...> [✓]
Enable Check Flip....> [ ]
  
```

4.8.1.2. In ISS45 V7 POST Configuration 1 screen set check Drawer in use and check connected to printer

```

Drawer in use.....> [✓]
connected to printer.> [✓]
Dual drawer enabled..> [ ]
  
```

4.8.1.3. In the ISS45 V7 WinPOS.ini file, add the following lines

NOTE: The following lines are case sensitive

NOTE: If using an A776 printer

DefaultPrinterName=A776

OposMicr=Yes

DefaultMicrName=A776
 OposDrawer=Yes
 DefaultDrawerName=A776-1
 DrawerNegativeCheck=Yes
NOTE: If using an A794 printer
 DefaultPrinterName=A794
 OposDrawer=Yes
 DefaultDrawerName=A794-1
 DrawerNegativeCheck=Yes

4.8.2. ISS45 V7 Configuration (V7.1.3.0-050 and above)

- 4.8.2.1. In ISS45 V7 POST Configuration 1 screen set Printer type OPOS Generic, Port None, MICR reader in use checked for the A776 printer and unchecked for the A794 printer, OPOS checked and Enable Check Flip unchecked

```

Printer:
Type.....> Opos  Generic [↕]
Port.....> None    [↕]
MICR reader in use...> [✓]  OPOS...> [✓]
Enable Check Flip.....> [ ]
  
```

- 4.8.2.2. In ISS45 V7 POST Configuration 1 screen set check Drawer in use and check connected to printer

```

Drawer in use.....> [✓]
connected to printer.> [✓]
Dual drawer enabled..> [ ]
  
```

- 4.8.2.3. In the ISS45 V7 WinPOS.ini file, add the following lines

NOTE: The following lines are case sensitive
NOTE: If using an A776 printer
 DefaultPrinterName=A776
 OposMicr=Yes
 DefaultMicrName=A776
 OposDrawer=Yes
 DefaultDrawer1Name=A776-1
 DrawerNegativeCheck=Yes
NOTE: If using an A794 printer
 DefaultPrinterName=A794
 OposDrawer=Yes
 DefaultDrawer1Name=A794-1
 DrawerNegativeCheck=Yes

4.8.3. ISS45 V8 Configuration

- 4.8.3.1. In ISS45 V8 Post Configuration screen WinPOS H/W Tab set Printer Type OPOS Generic, Baud Rate None, Port 0, check Use OPOS and check MICR for the A776 printer and uncheck MICR for A794 printer

Printer

Type: OPOS Generic

Baud Rate: None

Port: 0 Use OPOS

MICR Reader in use

Printer with partial cut

Check flip feature

4.8.3.2. In ISS45 V8 Post Configuration screen WinPOS H/W Tab set Drawer type Connected to the printer and check Use OPOS

Drawer

Drawer type: Connected to printer Use OPOS

Dual Drawer

4.8.3.3. In ISS45 V8 Post Configuration screen E-Ticket – OPOS tab set OPOS Driver Name to A776 or A794. Note the Drawer has a -1 and the A794 does not contain a MICR

A776 example below

OPOS Printer Driver Name: A776

OPOS Drawer Driver Name: A776-1

OPOS MICR Driver Name: A776 Use OPOS MICR

A794 example below

OPOS Printer Driver Name: A794

OPOS Drawer Driver Name: A794-1

4.9. D22_D25 MSR and Key Lock

4.9.1. ISS45 V7 Configuration

4.9.1.1. In ISS45 V7 POST Configuration 2 screen set Keyboard port to 0 since the D22_D25 keyboard connects to the USB port

Keyboard port.....▶ 0

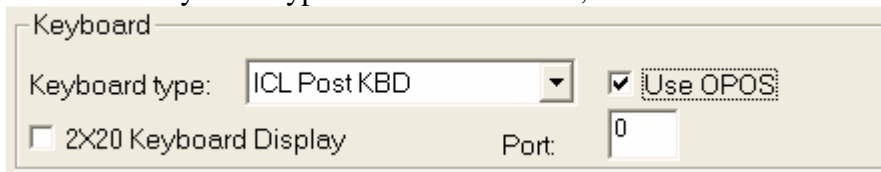
4.9.1.2. In the ISS45 V7 WinPOS.ini file, add the following lines

NOTE: The following lines are case sensitive

OposKeyBoard=Yes
DefaultKeyBoardName=
OposMsr=Yes
DefaultMsrName=D22_D25_MSR
OposKeyLock=Yes
DefaultKeyLockName=D22_D25_KLK

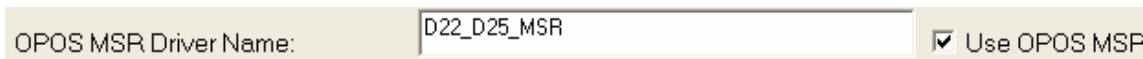
4.9.2. ISS45 V8 Configuration

- 4.9.2.1. In ISS45 V8 Post Configuration screen WinPOS H/W Tab set
Keyboard type: to ICL Post KBD, check Use OPOS and Port: 0



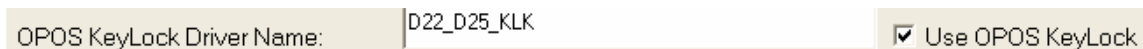
Keyboard
Keyboard type: ICL Post KBD Use OPOS
 2X20 Keyboard Display Port: 0

- 4.9.2.2. In ISS45 V8 Post Configuration screen E Ticket – OPOS tab set
OPOS MSR Driver Name to D22_D25_MSR and check Use OPOS
MSR



OPOS MSR Driver Name: D22_D25_MSR Use OPOS MSR

- 4.9.2.3. In ISS45 V8 Post Configuration screen E Ticket – OPOS tab set
OPOS KeyLock Driver Name to D22_D25_KLK and check Use
OPOS KeyLock



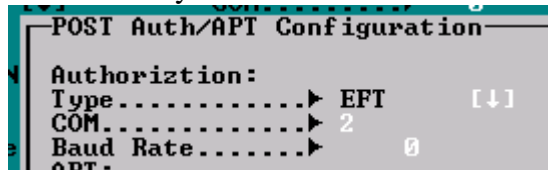
OPOS KeyLock Driver Name: D22_D25_KLK Use OPOS KeyLock

4.10. HyperCom 4100/4250 USB Pin Pad

NOTE: This setup is only for setting up the HyperCom 4100/4250 when using the USB connection. The RS232 setup is the same as before.

4.10.1. ISS45 V7 Configuration

- 4.10.1.1. In ISS45 V7 POST Configuration 1 screen, click on the Auth/APT button to bring up the POST Auth/APT Configuration screen.
4.10.1.2. Authorization Type is EFT, COM needs to be a number in the range of 1-4 to activate the USB Pin Pad. A blank or 0 value will not work. Use 2 if you are unsure.



POST Auth/APT Configuration
Authorization:
Type..... EFT [↓]
COM..... 2
Baud Rate..... 0
APT.....

4.10.2. ISS45 V8 Configuration

- 4.10.2.1. In ISS45 V8 Post Configuration screen, click on the Auth – EFT –If tab at the top.
- 4.10.2.2. Authorization Type is EFT, COM needs to be a number in the range of Com1 – Com4 to activate the USB Pin Pad. None on the dropdown with not work.

The screenshot shows a configuration window titled "Authorization". It contains three dropdown menus:

- Type: EFT
- Port: Com1
- Baud Rate: 9600

5. Further installation

5.1. Scope of this document

- 5.1.1. This document is not intended to cover past this point of the installation of the TeamPOS 3000XE
- 5.1.2. Installation of Payment systems, etc., are handled exactly the same as they are on any other machine
- 5.1.3. As a final reminder, you need to apply one of the patches (cc, ipy, mtx, smk or us) to the ISS45 software load for configuration or updates

ATTACHMENT A (RADEON 7000 SERIES VIDEO CARD INSTALLATION)

1.1. TeamPOS 3000XE Second Video Card Installation (RADEON 7000 Series)

1.1.1. RADEON 7000 Series Installation

- 1.1.1.1. Do a normal Windows shutdown and unplug the power cable on the TeamPoS 3000 XE
- 1.1.1.2. Install the RADEON 7000 Series PCI video card into the center PCI slot
- 1.1.1.3. Plug your DVI monitor on the DVI connector on the video PCI card
- 1.1.1.4. Plug your VGA monitor on the VGA connector on the TeamPOS 3000XE
- 1.1.1.5. Turn on the computer and enter the CMOS by hitting the [Delete] key on the keyboard
- 1.1.1.6. CMOS Setting to check
 - 1.1.1.6.1. Advanced BIOS Features
 - Init Display First [Onboard/AGP]
 - 1.1.1.6.2. Save & Exit Setup

NOTE: You will see the diagnostics on the VGA monitor connected to the TeamPOS 3000XE

1.1.1.7. The driver for the RADEON 7000 Series has already been installed in the WePOS image on the TeamPOS 3000XE

NOTE: IF THE TP3000XE CONTAINS THE ORIGINAL SHIPPING IMAGE 1.1a, YOU WILL HAVE TO DO THE FOLLOWING STEPS TO INSTALL THE NEW ATI RADEON 7000 DRIVER CORRECTLY.

1. The Radeon 7000 card should be shipping with the video driver. The driver is also available from the Fujitsu FTP site through the www.storenext.com web page.

NOTE: DO NOT USE THE SETUP.EXE PROGRAM ON THE DRIVER CD. IT WILL NOT OVERWRITE THE SYSTEM32 FILES. USE THE FOLLOWING STEPS TO UPDATE THE DRIVER.

2. Goto Start > Settings > Control Panel > System
3. Click on the Hardware tab
4. Click on Device Manager
5. Open the display adapters and double click on RADEON 7000 / RADEON VE Family (Microsoft Corporation)
6. Click on the Driver tab
7. Click on Update Driver
8. The Welcome to the Hardware Update Wizard screen appears
9. Put the bullet on No, not this time and click Next
10. Put the bullet on Install from a list or specific location (Advanced) and click Next
11. Browse to the CD folder or downloaded file ATI-Driver containing the folder 2KXP_INF and click OK
12. Click Next to install the updated driver
13. Click Finish
14. Click Yes to restart computer now

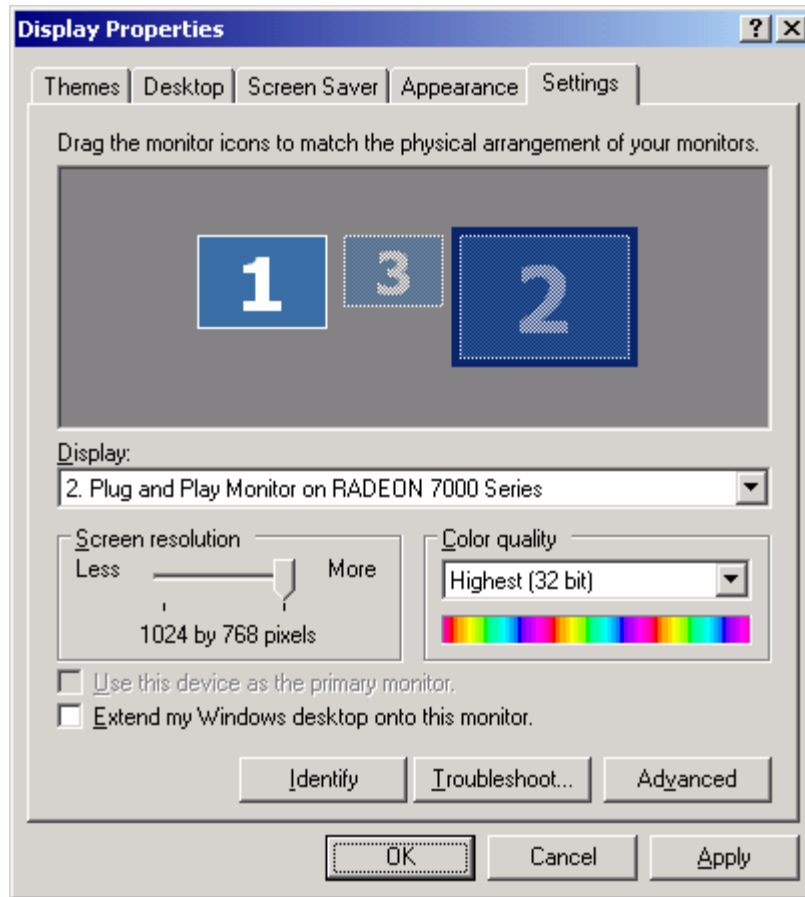
1.1.1.8. Right click on the desktop and select Properties

1.1.1.9. Select the Settings Tab and the following screen is displayed showing Monitors 1,3,2

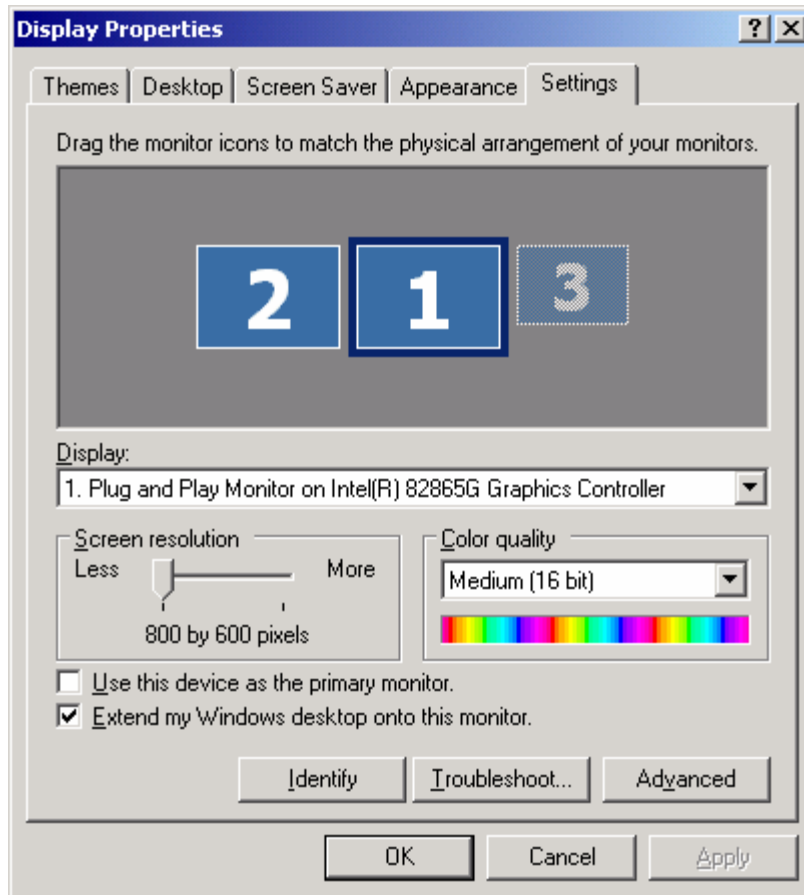
1.1.1.9.1. Monitor 1 is the VGA on the motherboard

1.1.1.9.2. Monitor 3 is not used (The connector is missing on the add-in card)

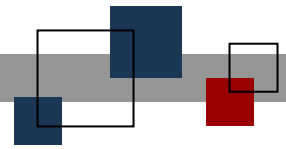
1.1.1.9.3. Monitor 2 is the DVI connector on the add-in card



- 1.1.1.10. Click on Monitor 2 (DVI)
 - 1.1.1.10.1. Set Screen resolution to 800 by 600 pixels
 - 1.1.1.10.2. Set color quality to Medium (16 bit)
 - 1.1.1.10.3. Click Extend my Windows desktop onto this monitor
 - 1.1.1.10.4. Click Apply
 - 1.1.1.10.5. Click Use this device as the primary monitor
 - 1.1.1.10.6. Click Apply
- 1.1.1.11. Click on Monitor 1 (VGA)
 - 1.1.1.11.1. Uncheck Extend my Windows desktop onto this monitor
 - 1.1.1.11.2. Click Apply
 - Note: This will force the desktop to monitor 2 (DVI)**
 - 1.1.1.11.3. Check Extend my Windows desktop onto this monitor
 - 1.1.1.11.4. Click Apply
- 1.1.1.12. The displays should now show on the Display Properties as 2,1,3



1.1.1.13. Display and installation and setup is complete at this point



© StoreNext Retail Technologies LLC 2008

StoreNext Retail Technologies LLC endeavors to ensure that the information in this document is correct and fairly stated but does not accept liability for any error or omission.

The development of StoreNext products and services is continuous and published information may not be up to date. It is important to check the current position with StoreNext. This document is not part of a contract or license save insofar as may be expressly agreed.