



-  *TeamPoS 3000 XE*
-  *Second Video Card Setup*
- 
- 
- 

## TeamPoS 3000 XE Setup with ISS45

<b>Date of Issue</b>	<b>Product Identification Number</b>	<b>Part Number</b>	<b>Brief Description</b>
August 2007	45001/107	89000393	Initial Release
October 2007	45001/107	89000404	Update

**© Copyright StoreNext Retail Technologies LLC 1995-2007  
All rights reserved**

This publication is protected by federal copyright law. No part of this publication may be reproduced or transmitted into any human or computer language in any form or by any means, stored in a retrieval system, transmitted, redistributed, translated or disclosed to third parties, or de-compiled in any way including, but not limited to, photocopy, photograph, electronic, mechanical, magnetic or manual without the express written permission of StoreNext Retail Technologies LLC or its licensors, if any. This document, notwithstanding the above, may be distributed in electronic or printed form to personnel who are employed by either (1) a StoreNext customer of the subject system of this document or (2) personnel from an authorized StoreNext dealer of the subject system of this document. All copies, so distributed and/or so authorized, shall contain a full copy of this copyright notice.

StoreNext Retail Technologies LLC endeavors to ensure that the information in this document is correct and fairly stated but does not accept liability for any error or omission. StoreNext Retail Technologies LLC makes no representation or warranties with respect to the contents hereof, and specifically disclaims any implied warranties of merchantability or fitness for a particular purpose or non-infringement. No commitments by StoreNext or its suppliers are made from this documentation which is provided for information only.

Development of StoreNext products and documentation is continuous: StoreNext Retail Technologies LLC reserves the right to revise this publication and to make changes from time to time in the contents hereof or in the products herein described or discussed without notice and without any obligation of StoreNext Retail Technologies LLC to notify any person or organization of such revision or changes. Information published in this document will likely become obsolete over time and it is recommended that users regularly check for updates and newer versions.

StoreNext Retail Technologies LLC has prepared this manual for use by users, authorized third parties and personnel of StoreNext Retail Technologies LLC as a guide to the proper installation, operation, customization and/or maintenance of StoreNext Retail Technologies LLC equipment and software. The drawings and specifications contained herein are the property of StoreNext Retail Technologies LLC and/or its licensors.

Third-party products, services, or company names referenced in this document may be trademarked or copyrighted by their respective owners, and are for identification purposes only.

Copyrights, trademarks and license agreements shall be governed and construed in accordance with the laws of the State of Texas and the Federal Arbitration Act, and shall benefit Retailix, its successors, and assigns.

Address comments and corrections to:

StoreNext Retail Technologies LLC  
Software Program Director  
6100 Tennyson Parkway  
Suite 130  
Plano, Texas 75024

## 0.1. TeamPOS 3000XE Second Video Card Installation (RADEON 7000 Series)

### 0.1.1. RADEON 7000 Series Installation

- 0.1.1.1. Do a normal Windows shutdown and unplug the power cable on the TeamPoS 3000 XE
- 0.1.1.2. Install the RADEON 7000 Series PCI video card into the center PCI slot
- 0.1.1.3. Plug your DVI monitor on the DVI connector on the video PCI card
- 0.1.1.4. Plug your VGA monitor on the VGA connector on the TeamPOS 3000XE
- 0.1.1.5. Turn on the computer and enter the CMOS by hitting the [Delete] key on the keyboard
- 0.1.1.6. CMOS Setting to check
  - 0.1.1.6.1. Advanced BIOS Features
    - Init Display First [Onboard/AGP]
  - 0.1.1.6.2. Save & Exit Setup
- 0.1.1.7. The driver for the RADEON 7000 Series has already been installed in the WePOS XE image R1.02 and above on the TeamPOS 3000XE

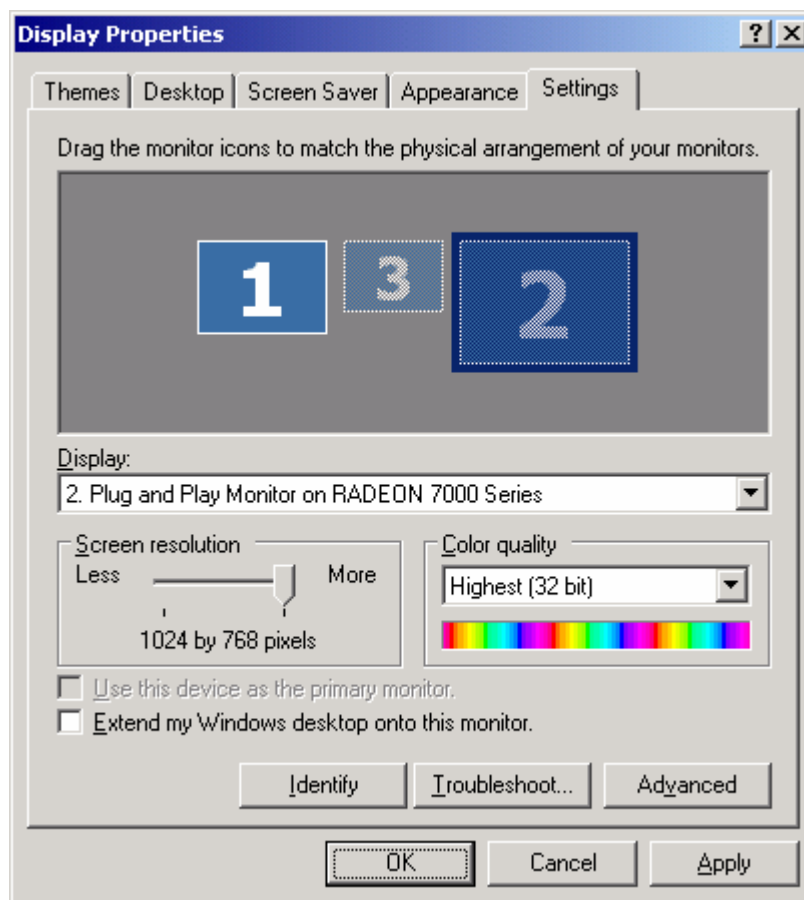
**NOTE: IF THE TP3000XE CONTAINS THE ORIGINAL SHIPPING IMAGE 1.1a, YOU WILL HAVE TO DO THE FOLLOWING STEPS TO INSTALL THE NEW ATI RADEON 7000 DRIVER CORRECTLY.**

1. The Radeon 7000 card should be shipping with the video driver. The driver is also available from the Fujitsu FTP site through the [www.storenext.com](http://www.storenext.com) web page.

**NOTE: DO NOT USE THE SETUP.EXE PROGRAM ON THE DRIVER CD. IT WILL NOT OVERWRITE THE SYSTEM32 FILES. USE THE FOLLOWING STEPS TO UPDATE THE DRIVER.**

2. Goto Start > Settings > Control Panel > System
3. Click on the Hardware tab
4. Click on Device Manager
5. Open the display adapters and double click on RADEON 7000 / RADEON VE Family (Microsoft Corporation)
6. Click on the Driver tab
7. Click on Update Driver
8. The Welcome to the Hardware Update Wizard screen appears
9. Put the bullet on No, not this time and click Next
10. Put the bullet on Install from a list or specific location (Advanced) and click Next

11. Browse to the CD folder or downloaded file ATI-Driver containing the folder 2KXP\_INF and click OK
  12. Click Next to install the updated driver
  13. Click Finish
  14. Click Yes to restart computer now
- 0.1.1.8. Right click on the desktop and select Properties
  - 0.1.1.9. Select the Settings Tab and the following screen is displayed showing Monitors 1,3,2
    - 0.1.1.9.1. Monitor 1 is the VGA on the motherboard
    - 0.1.1.9.2. Monitor 3 is not used (The connector is missing on the add-in card)
    - 0.1.1.9.3. Monitor 2 is the DVI connector on the add-in card



- 0.1.1.10. Click on Monitor 2 (DVI)
  - 0.1.1.10.1. Set Screen resolution to 800 by 600 pixels
  - 0.1.1.10.2. Set color quality to Medium (16 bit)
  - 0.1.1.10.3. Click Extend my Windows desktop onto this monitor
  - 0.1.1.10.4. Click Apply
  - 0.1.1.10.5. Click Use this device as the primary monitor
  - 0.1.1.10.6. Click Apply
- 0.1.1.11. Click on Monitor 1 (VGA)

0.1.1.11.1. Uncheck Extend my Windows desktop onto this monitor

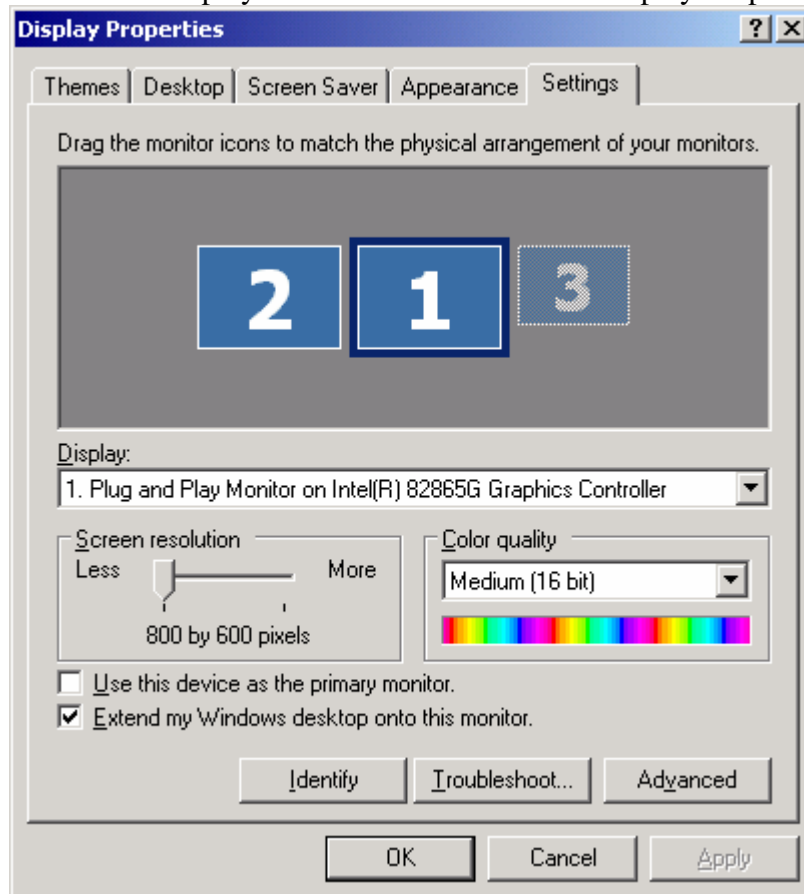
0.1.1.11.2. Click Apply

**Note: This will force the desktop to monitor 2 (DVI)**

0.1.1.11.3. Check Extend my Windows desktop onto this monitor

0.1.1.11.4. Click Apply

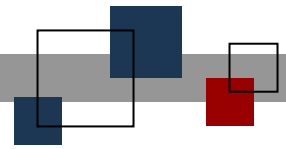
0.1.1.12. The displays should now show on the Display Properties as 2,1,3



0.1.1.13. Display and installation and setup is complete at this point







**© StoreNext Retail Technologies LLC 2007**

StoreNext Retail Technologies LLC endeavors to ensure that the information in this document is correct and fairly stated but does not accept liability for any error or omission.

The development of StoreNext products and services is continuous and published information may not be up to date. It is important to check the current position with StoreNext. This document is not part of a contract or license save insofar as may be expressly agreed.