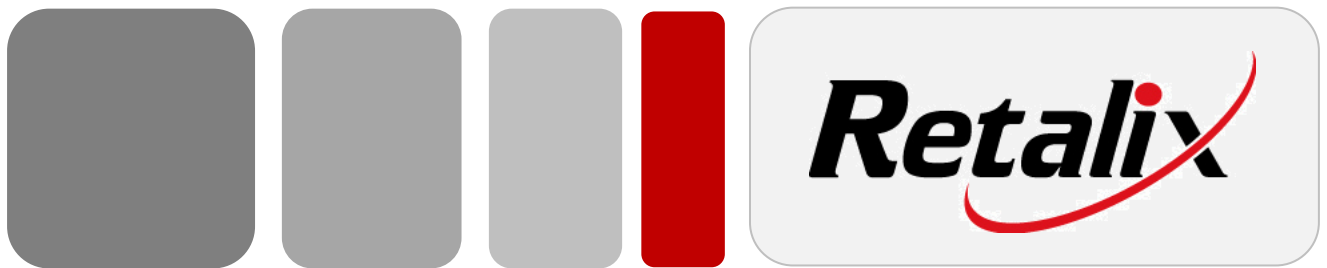


Retalix WinEPS



Release Notes
Version 827.2 SP1

Copyright © 2012 Retalix Ltd.

All rights reserved.

Israel

10 Zarhin St.

P.O. Box 2282

Ra'anana 43000, Israel

Tel: +972 9 7766677

Fax: +972 9 7400471

Website: <http://www.etalix.com>

USA

6100 Tennyson Parkway

Suite 150, Plano, TX 75024 USA.

469-241-8400

Website: <http://www.etalix.com>

Retalix technical documentation and the product(s) described herein are protected by one or more U.S. copyrights, patents, foreign patents, or pending applications. No part of this publication may be reproduced or transmitted into any human or computer language in any form or by any means, stored in a retrieval system, transmitted, redistributed, translated or disclosed to third parties, or de-compiled in any way including, but not limited to, photocopy, photograph, electronic, mechanical, magnetic or manual without the expressed written permission of Retalix Ltd., or its licensors, if any. All copies, so authorized, shall contain a full copy of this copyright notice.

Retalix products are licensed products. The product licenses convey the right to use only those specific products, components, modules, features and/or functions specified in the license agreement or contract. This publication may mention or reference products, components, modules, features and/or functions that are not part of a particular license agreement. The customer is not entitled to the receipt of, or use of, any other products, components, modules, features and/or functions that may be referenced in any documentation provided to customer unless additional license fees are paid and an appropriate license agreement is duly executed. Retalix's obligations with respect to its products and services are governed solely by the agreements under which they are provided.

U.S. Government Users Restricted Rights: If the Customer is a United States Government entity, the Retalix products described herein are "commercial computer software" as defined by current Federal Acquisition Regulation ("FAR"), Department of Defense Federal Acquisition Regulation Supplement ("DFAR"), or other applicable Agency regulation provisions. If the Retalix products described herein are other than "commercial computer software," then the United States Government Customer shall receive no greater than Restricted Rights, as defined in the currently applicable version of the FAR, DFAR, or other applicable Agency regulation. In the event that alternative regulatory rights allocation provisions are available to the parties, the provision which provides the Customer with the narrowest rights allocation permitted by law and regulation shall apply. For Civilian Agencies: Restricted Rights. Use, reproduction or disclosure is subject to restrictions set forth in subparagraph (a) through (d) of the Commercial Computer Software Restricted Rights clause at 52.227-19, as applicable, and the limitations set forth in standard Retalix license agreements for software and technical documentation.

This publication is furnished for informational use only and should not be construed as a commitment by Retalix. The information could include technical inaccuracies or typographical errors. Every effort has been made to make this publication as complete and accurate as possible, but it is provided "as is" without warranty of any kind either expressed or implied, including, but not limited to, the implied warranties of merchantability, fitness for a particular purpose, or non-infringement. Retalix may make improvements and/or changes in the program(s), product(s), and/or applications described in this publication at any time without notice. Due to continuous development of Retalix Ltd. products, information published in this document may become obsolete.

Third-party products, services, or company names referenced in this document may be trademarked or copyrighted by their respective owners, and are for identification purposes only.

Copyrights, trademarks and license agreements shall be governed and construed in accordance with the laws of the State of Texas and the Federal Arbitration Act, and shall benefit Retalix, its successors, and assigns.

Notice

Retalix reserves the right to make changes to specification at any time and without notice. The information furnished by Retalix in this publication is believed to be accurate and reliable; however, no responsibility is assumed by Retalix and/or its affiliates for its use, nor for infringements of patents or other rights of third parties resulting from its use. No license is granted under any patents or patent rights owned by Retalix and/or its affiliates.

Table Of Contents

TABLE OF CONTENTS..... I

SECTION 1 1

 827.2 Information 1

 Minimum System Requirements 1

 Hardware Requirements for WinEPS and OpenEPS 1

 WinEPS and OpenEPS User Account Requirements 2

 Software Requirements for WinEPS 2

 Software Requirements for OpenEPS (Front POS Lanes): 2

 PCI Compliance and Operating Systems..... 3

 Unsupported Systems 3

 Code Versions 4

 WinEPS Versions: 4

 OpenEPS Versions: 4

 OpenIP Versions: 4

 Terminal Code Versions: 5

 Stand Beside Code Versions:..... 5

 Known Issues 6

 Upgrades only supported from WinEPS version 825.0 or higher 6

 WinEPS and POS Lane Windows Accounts Require Registry Access 6

 WinEPS will not run under “Local System Account” 7

 Verifone Vx570 Stand Beside, High Memory Terminal Only 7

 Latest Mercury Host DSI..... 8

 Debit Balances Not Printed on Receipts 8

 Hypercom Terminal Issues 8

 Hypercom 4100 Terminal Code 8

 WinEPS requires Verifone Omni 3750 code version 50 or higher 9

 Linux and SOAP 9

 SOAP Requires Exclusion to DEP 9

 User Account Control (UAC) Must be Disabled..... 12

 Windows 7 Requires Administrative User Account 13

 WinEPS Fixed Issues and Enhancements..... 14

OpenEPS Changes 26

OpenIP Changes 31

Term Handler Changes 31

Host Changes 32

 ACI 32

 Ascendent 32

 Concord: EPC 33

 Concord: H&C Format 33

 Concord: Memphis 35

 Demo 35

 ePicTranz 36

 FLC Check Host 36

 LML 38

 RBS WorldPay / RBS Lynk 38

 LX1 & LX2 (Check) Hosts 39

 Mainsail 40

 Mercury 40

 MPS (Fifth Third) 41

 MTX Receipt Capture Host 41

 Schnucks Check Auth 41

 ServerEPS (Native Format) 42

 SVDot Gift Card Host 42

Terminal Code Changes 43

 Hypercom ICE5500 43

 Hypercom L4100 43

 Hypercom L4150 44

 Hypercom L4150 PCI 2.0 44

 Hypercom L4250 45

 Hypercom L5300 45

 Ingenico eN-Crypt 2100 46

 Ingenico eN-Touch 1000 46

 Ingenico 6550 / 6780 46

 Verifone Everest 47

Verifone MX830/MX850/MX860/MX870/MX880 47

Verifone Mx760/OP 4100 48

Verifone Omni 7000 49

VeriFone Vx670 (Wireless Terminal)..... 49

Stand Beside Code Changes..... 50

 Verifone Vx570..... 50

External Program Changes..... 51

 Engine Monitor and Tray Icon..... 51

 OMNI 7000 Scanmaster Code 51

 Redundancy Service 52

 UpdateXMLFiles.Exe..... 53

 Virtual Terminal 2..... 54

 Voucher Clear Application 54

SECTION 2 55

 New Features 55

 New FLC Check Host 55

 FLC Host Processor Definition Screen 55

 FLC Supported Transaction Types 58

 FLC Additional Information 59

 Voice Authorization Instead of Decline on Offline Purchase 60

 Attempt Voice Auth / Force 60

Section 1

827.2 Information

This section covers changes, bug fixes, and enhancements to the 827.2 release of WinEPS. The items listed below are the changes made only since the previous major release. Previous editions of the WinEPS Release Notes are located on the WinEPS installation CD, in the directory Documents/Old Release Notes, or contact WinEPS support for a copy.

Minimum System Requirements

- If the minimum requirements for the operating system you are using are higher than what is listed below, use those requirements instead.

Hardware Requirements for WinEPS and OpenEPS

- Pentium III (Intel or compatible) 500 MHz processor (1 GHz or faster recommended)
- 256 MB of RAM (512 MB or more recommended)
- VGA, or higher, resolution monitor set at 1024x768 or better
- CD-ROM drive for software installation
- Ethernet Card
- Drive Space Requirement for WinEPS server:
 - 600 MB of available hard disk space on the WinEPS server (1.5 Gb of drive space is recommended).
 - WinEPS requires approximately 300 Mb of space to install to; in addition a busy store can generate up to 10 Mb of log files per day. The default of 30 days storage can use up to 300 Mb of extra space resulting in the minimum requirement of 600 Mb of drive space.
 - 30 Days of log retention requires a total of 600 Mb free Hard Drive space.
 - 60 Days of log retention requires a total of 900 Mb free Hard Drive space.
 - 90 Days of log retention requires a total of 1.2 Gb free Hard Drive space.
- Drive Space Requirement for OpenEPS on each POS lane:
 - 100 Mb free drive space for configuration files and logs

WinEPS and OpenEPS User Account Requirements

The User-Updatable Encryption Keys utilize the Windows registry to store a key-part of the encryption key in use. This means that the user account under which WinEPS runs as well as the user account under which the POS system runs must have both read and write access to the registry.

If the user account does not have the appropriate rights, WinEPS will not be able to process transactions, and OpenEPS will provide an error to the POS and will likewise be unable to process transactions.

Software Requirements for WinEPS

- TCP/IP Protocol
- Any of the following Operating Systems:
 - Windows 7, 32 or 64 bit
 - Microsoft Vista SP1
 - Windows Server 2008, 32 or 64 bit
 - Microsoft Windows XP SP2, Professional
 - Microsoft Server 2003 SP 1

Caution:

WinEPS upgrades require a minimum starting version of 825.0. If you have a currently installed version of WinEPS older than Version 825.0, it must first be upgraded to 825.0 using previously available upgrade installations. Instead of upgrading a version prior to 825.0, it is highly recommended to make a backup of your WinEPS, perform a new installation, and configure your new version from scratch

Software Requirements for OpenEPS (Front POS Lanes):

- TCP/IP Protocol
- Any of the above Operating Systems, plus:
 - Windows XP Embedded
 - WePOS
 - Linux [These versions only]: Red Hat version 2.4.7-10; Fedora version 2.4.20

Under Windows Vista and above, non-administrative users may not stop or start services; the Stop and Start buttons in WinEPS will be grayed out if you are logged in to Windows on as a non-administrative Windows user.

PCI Compliance and Operating Systems

PCI requires that the security patches for software in the payments environment be tested and installed in a timely fashion. Several Microsoft operating systems have past their supported security update lifespan, and no additional security patches will be released. These operating systems include Windows NT 4.0, Windows 95/98, and 2000.

Due to the vulnerability that a lack of security patches represents, these operating systems are no longer supported for use with the WinEPS/OpenEPS product suite. Only the operating systems listed under the [Software Requirements](#) section above are supported.

Refer to information at <http://support.microsoft.com/> for the most up to date security related articles and end of support dates for all Microsoft operating systems.

Unsupported Systems

The following operating systems and hardware are not supported:

- Windows NT 4.0 is no longer supported (See PCI compliance section above)
- Windows Win95/Win98 is no longer supported (See PCI compliance section above)
- Microsoft Server 2000 is no longer supported (See PCI compliance section above)
- Microsoft Windows 2000 is no longer supported (See PCI compliance section above)
- WinEPS will not function on non NT-based Windows versions, such as Windows ME.
- XP Home version is **not** supported due to its limited scope.

Code Versions

WinEPS Versions:

Module	Version
EPSEngineSrv.Exe	827.2.0.593
EPSMenu.Exe	827.2.1.550
Rpt.Exe	827.2.0.460

OpenEPS Versions:

Module	Version	Date
mtx_eps.dll	827.2.0.578	7/17/2012
mtx_pos.dll	827.2.0.126	7/20/2012
libmtx_eps.so	827.2.0.119	7/26/2012
libmtx_pos.so	827.2.0.85	12/3/2011

OpenIP Versions:

Module	Version
OpenIPSRV.exe	826.1.0.1
TermHandlerSTSSrv.exe	825.2.0.49

Terminal Code Versions:

Terminal	Version	Additional Version Info	Date
eN-Crypt 2100	2.40		6/4/2008
eN-Touch 1000	06.06		1/20/2003
Everest	51		8/27/2010
HYP 4100	232		1/25/2007
HYP 4150	425	FPE 5.P.115	8/19/2010
HYP L4250	425	FPE 5.P.115	8/19/2010
HYP L5300	Not Yet Available		
Mx830/850/870/880	231Q	RFS 18	12/7/2011
Mx860	231Q	RFS 18	12/7/2011
Mx760/OP 4100	221E		2/17/2011
Omni 7000	57		1/27/2011
VX670	20		2/28/2008

Stand Beside Code Versions:

Terminal	Version	Date
Verifone Omni 3750 (No longer PED Compliant)	51	7/5/2011
VX570 (Replaces the Omni 3750)	52	9/7/2011

Known Issues

Upgrades only supported from WinEPS version 825.0 or higher

The current WinEPS install package only supports upgrades from previous versions of WinEPS 825.0 or higher. If you have a currently installed version of WinEPS older than version 825.0, it must first be upgraded to 825.0 using previously available upgrade installations. For this purpose, it is recommended to use the 826.0 installation package; the 826.0 install package supports upgrades from as old a version number as 815.3. Once an older system has been brought up to at least 825.0, the current installation package may be used to complete the upgrade to the latest version.

The 826.0 installation package can be found on the WinEPS installation CD.

If your WinEPS version is older than 815.3 it is highly recommended to make a backup of your WinEPS, perform a new installation, and configure your new version from scratch. If you do need to upgrade from a version prior to 815.3, contact MTX Support for assistance.

When performing an upgrade from the 825.0 version (only), TOR transactions will not be converted; it is therefore recommended that any location on the 825.0 version that is upgraded should begin the upgrade process only after a successful End of Day has processed to ensure there are no outstanding TOR reversals pending.

WinEPS and POS Lane Windows Accounts Require Registry Access

The new User-Updatable Encryption Keys utilize the Windows registry to store a key-part of the encryption key in use. This means that the user account under which WinEPS runs as well as the user account under which the POS system runs must have both read and write access to the registry.

If the user account does not have the appropriate rights, WinEPS will not be able to process transactions, and OpenEPS will provide an error to the POS and will likewise be unable to process transactions.

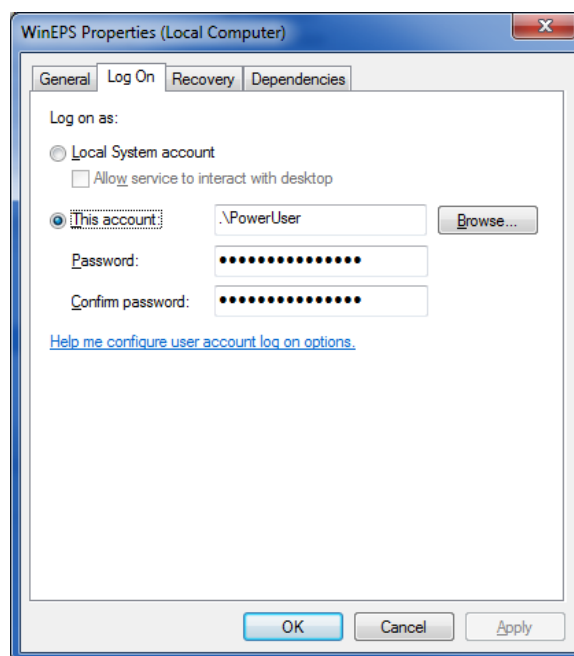
WinEPS installations using the Redundancy Service should note that the Redundancy Service also requires registry access on both the Primary and Backup WinEPS server in order to successfully transfer the key data during a synch. The user account that RS runs under should also have access to the Windows Registry.

WinEPS will not run under “Local System Account”

Due to the necessity of consistent read and write access to the Windows Registry, as well as limiting account scope to satisfy PCI requirements, WinEPS will not run if the WinEPS service is configured to use a Local System Account.

If the WinEPS Service is configured to use Local System Account, the WinEPS service will abort start up, and will shut down processing.

The account provided to run the Service should be specific pre-defined account used only to run the WinEPS and RS services.



In order to prevent accidental selection of the Local System Account option, the WinEPS Service Installation process will ONLY provide the option to enter specific account information. If you are upgrading from a previous version and have a Local System Account defined, then as part of the upgrade, the installation will prompt for the entry of new account information.

Verifone Vx570 Stand Beside, High Memory Terminal Only

Due to enhancements to the Vx570 code version 50, WinEPS now supports only the high memory version of the Vx570 terminal.

High memory terminals contain at least 12 MB of memory.

Latest Mercury Host DSI

The latest Mercury Host DSI version 2.50.3851 is required for processing with 826.1 SP1 or later. If you do not have the latest DSI, it can be found on the WinEPS release CD, in the /Tools/ Mercury Host DSI Installer/ directory.

Debit Balances Not Printed on Receipts

Some hosts incorrectly return a balance file for debit transactions linked to customer accounts. For all debit transactions, balances will not be printed on the receipt.

Hypercom Terminal Issues

The previous USB driver was reported to have issues in the field; however, when using the latest version of the USB driver provided by Hypercom, Hypercom terminals using the non-powered version of the USB cable lose connection at points during the transaction processing. As such MTXEPS is not releasing the latest driver USB driver with the 826.1 WinEPS release.

No updated USB driver is available from Hypercom that corrects both of the above issues as yet. For locations experiencing issues with their current USB driver, you may wish to contact Hypercom to receive their latest version, providing the terminal is not using the non-powered USB. Locations using non-powered USB are recommended to continue using the older driver.

Hypercom 4100 Terminal Code

The Hypercom 4100 terminal continues to be released with the most recent version of code that functions for all versions of the 4100, which is version 232. The most recent version of the Hypercom code is version 425; however, due to differences in the Hypercom 4100 units themselves, this code version will not load on all models.

For the 425 code version to load successfully, the Hypercom 4100 unit must be the high-memory version. This code will not function on the low memory version, and attempting to load it on the low memory version could damage the terminal. To determine if you have the high or low memory version of the 4100, contact your terminal vendor.

The 4100 terminal will not be able to take advantage of the new features for entry of PAN or CCV2 at the terminal without the latest 425 code version.

If you determine that your 4100 is the high memory version and would like to acquire the latest terminal code for it, contact MTXEPS Support.

WinEPS requires Verifone Omni 3750 code version 50 or higher

Locations using the older Omni 3750 terminal (not the VX570) must upgrade their 3750 terminals to code version 50 or later prior to upgrading to WinEPS version 827.0.

To upgrade the terminal code, take the latest code from the 827.0 install CD ([CD Drive]:\OpenEPS\SCAT Code\Vx570 & Onmi 3750 Verifone IP Stand Beside\OMNI 3750 Stand Beside), OMNI 3750 Term Code.zip and place it into the C:\Program Files\MicroTrax\EPS\config\terminalcode folder. Verify that your lane configuration for the 3750 has that file selected for its terminal code [OpenEPS Lanes button | select terminal config | Pin Pad Configuration tab, Terminal code File selection box]. Once the terminal code has been configured, stop and restart WinEPS, then sign on with the terminal to allow automatic upgrade.

After upgrade of the 3750 completes, you may proceed with upgrading WinEPS to 827.

Linux and SOAP

OpenEPS now uses SOAP instead of FTP to transfer files; in full installations of Linux, the proper libraries are already present to support SOAP functionality; however, some POS systems use reduced capacity Linux loads that may not have all the required library files.

In order to install the potentially missing libraries, go to the \OpenEPS\Linux OpenEPS\ directory on the WinEPS installation CD. Extract the extra.soap.so.tgz file to the /usr/lib/ directory. Use the change mode command (chmod 777) to set the attributes.

You must also update the locale (/etc/sysconfig/i18n) with the following information:

- LANG="en-US.utf8"
- SUPPORTED="en_US.utf8:en_US:en"
- SYSFONT="lat0-sun16"
- SYSFONTACM="iso01"

SOAP Requires Exclusion to DEP

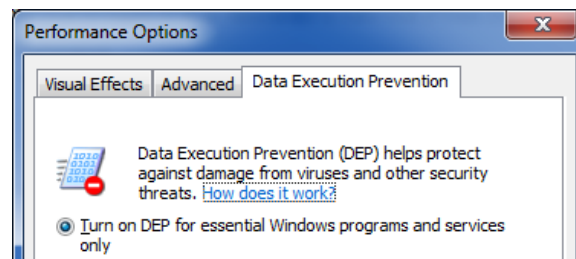
Windows Server 2008, Windows 7 and Windows XP all contain a security feature called Data Execution Prevention. In Windows Server 2008 and Windows 7, the Windows Data Execution Prevention is defaulted to on for all programs; in Windows XP it can be manually configured.

The update to the use of SOAP for file transfer requires that computer systems running any component that requires the use of SOAP have that component excluded from DEP, if DEP is running.

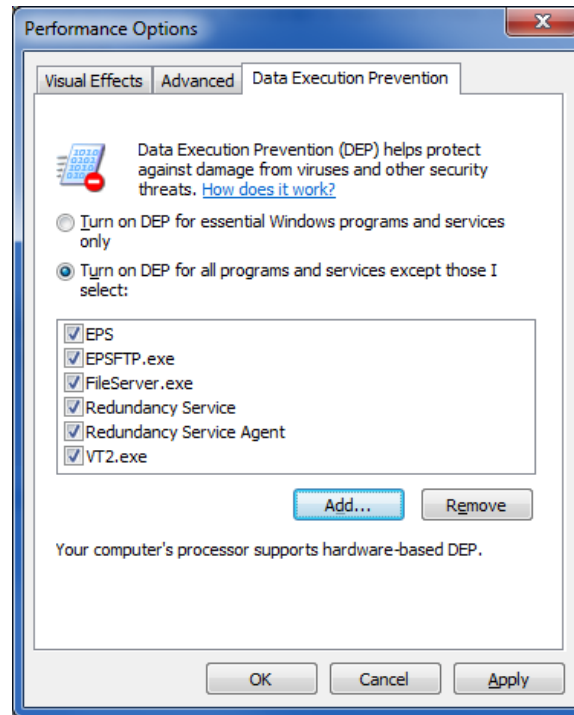
For WinEPS servers, this means excluding the WinEPS engine executable from DEP; for OpenEPS POS lanes, the POS executable that loads OpenEPS must be excluded and if running Virtual Terminal, the Virtual Terminal executable must be excluded. Finally, if using Redundancy, the redundancy executables must be excluded.

To modify the DEP settings use the following instructions:

1. On Windows 7/Server 2008, Go to start/windows logo, right click Computer and select Properties.
On Windows XP, Right click My Computer, choose Properties.
2. On Windows 7/Server 2008, Click on Advanced system setting on the left side of the screen under Control Panel Home.
3. Go to the Advanced tab and click the Settings button under Performance, then select the Data Execution Prevention tab.
4. If the DEP is set to the first radio button, where it is turned on only for Windows programs and services, you do not need to make any changes.



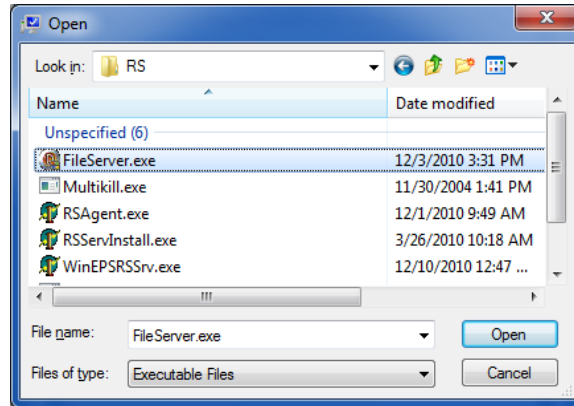
5. If it turned on for all programs and servers as shown below, click the Add button.



6. Use the opened selection box to select the executables that require exclusion from DEP. The following list details all MTXEPS files that require exclusion:
- WinEPS
 - EpsEngineSrv.exe
 - OpenEPS
 - VT2.exe
 - POS Executable [The executable that loads the OpenEPS mtx_pos.dll file]
 - Redundancy Service:
 - WinEPSRSSrv.exe
 - FileServer.exe
 - RSAgent.exe

All of the above file use SOAP to communicate and to download files.

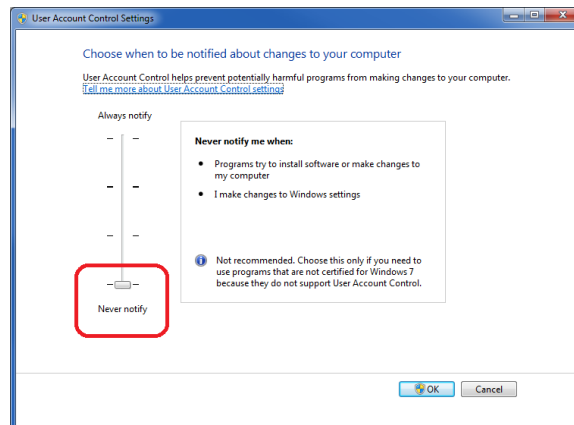
7. Add all the relevant executables to the exclusion list.
- The WinEPS executables are located by default in the C:\Program Files\MicroTrax\EPS folder.
 - The OpenEPS executables are located by default in the C:\Program Files\MicroTrax\OpenEPS folder.
 - RS executables are located by default in the C:\Program Files\MicroTrax\RS folder.



8. Browse to the appropriate directory and select the executable, then click Open and the executable will appear in the DEP exception list. Do the same for all the executables to be added on the current PC. The PC may not have all three applications loaded (WinEPS, OpenEPS and RS), so add the executable from the applications that are loaded.
9. Restart the PC for the changes to take effect.

User Account Control (UAC) Must be Disabled

When using WinEPS or OpenEPS on any of the Microsoft Operating Systems that utilize User Account Control (Windows Vista, Windows Server 2008, Windows 7) the system must be set to the “Never Notify” level.



Failure to set the User Account Control properly can result in a failure to process transactions, as the UAC can prevent WinEPS from properly accessing the Windows Registry.

Windows 7 Requires Administrative User Account

The user account that WinEPS & Redundancy Service runs under is typically recommended to be a Power User account, however in Windows 7, the Power User group and account type have been deprecated and no longer have the elevated access required to run the WinEPS software suite. As such, when installing WinEPS or RS on a Windows 7 OS, the account used must be a Windows administrator account.

WinEPS Fixed Issues and Enhancements

Enhancement	Description
<p>1. TOR sent to host incorrectly updates pending offline</p>	<ul style="list-style-type: none"> ▪ Fixed ▪ Corrected an issue with offline pending transaction when it's corresponding TOR was processed to the host.
<p>2. Improve handling of potential bad KEK3 in registry (827.2)</p>	<ul style="list-style-type: none"> ▪ Enhancement ▪ During the End of Day process, WinEPS will verify the current encryption against the stored value; if different WinEPS will automatically generate a new key and re-encrypt all encrypted transaction files with the new key.
<p>3. Local System Account not supported</p>	<ul style="list-style-type: none"> ▪ Update ▪ Due to the necessity of consistent read and write access to the Windows Registry, as well as limiting account scope to satisfy PCI requirements, WinEPS will not run if the WinEPS service is configured to use a Local System Account. ▪ If the WinEPS Service is configured to use Local System Account, the WinEPS service will abort start up, and will shut down processing. ▪ Upgrade and installation packages have been updated to prompt the user for new account information in the event that the service was previously installed, and found to be using a "Local System Account". ▪ See the Known Issues section for additional information.
<p>4. Retry critical file access</p>	<ul style="list-style-type: none"> ▪ Enhancement ▪ When accessing critical files, if the file is unavailable, WinEPS will try multiple times to access the file instead of failing immediately. This will assist in overcoming issues that might arise due to short term file locks, such as during a virus scan or system operation.

WinEPS Fixed Issues and Enhancements

Enhancement	Description
<p>5. Shut down on critical registry access error</p>	<ul style="list-style-type: none"> ▪ Enhancement ▪ To prevent the possibility of incorrect file handling due to missing registry security information, in the event that WinEPS is unable to read/write to the Windows registry, the WinEPS service will shut down with a warning message listed on the WinEPS menu.
<p>6. WinEPS SOAP download fail after EOD</p>	<ul style="list-style-type: none"> ▪ Fixed ▪ Corrected an issue where file download would fail after WinEPS performed an End of Day.
<p>7. Medigate/OTC Gift Card Support</p>	<ul style="list-style-type: none"> ▪ Enhancement ▪ Add support for Over The Counter gift cards. ▪ When a gift card range is defined with an OTC ProgramID in the Gift Card Card Prefix Table, the gift card will be identified with the ISOTC flag when it is used at OpenEPS. The POS can pick up this flag and perform specific functionality related to this card type. ▪ OTC cards support only purchase, return and balance inquiry transactions.
<p>8. 10054 Error</p>	<ul style="list-style-type: none"> ▪ Fixed ▪ Corrects an issue where a TCP/IP error 10054 was not being correctly handled which could cause the engine to become unresponsive.
<p>9. Update WinEPS encryption modules</p>	<ul style="list-style-type: none"> ▪ Enhancement ▪ WinEPS has been updated with the latest version of encryption modules.
<p>10. Updated WIC Packages</p>	<ul style="list-style-type: none"> ▪ Enhancement ▪ The latest WIC packages have been included in the installation and upgrade packages for WinEPS.

WinEPS Fixed Issues and Enhancements

Enhancement	Description
11. Remove unused term code box	<ul style="list-style-type: none"> ▪ Fixed ▪ Removed Terminal Code File box and selection button from WinEPS GUI for VX670, VX570, and Omni 3750 stand beside terminals, as that option was not used for these 3 terminal types. ▪ Removed Terminal Code File box and selection button from WinEPS GUI for the Everest and Omni 7000 terminal as the terminal code files in use by these terminals are not dynamic.
12. Old process.xml setting interfering with CPP xlm 'Skip sig' setting	<ul style="list-style-type: none"> ▪ Fixed ▪ Corrected an upgrade issue where the previous global setting for skipping the signature under a given \$ amount was not correctly added to the new card process profile setting and deleted from the old configuration file location. ▪ OpenEPS has also been updated to ignore the old setting, so as to prevent interference with the current configuration in any store location that has already performed an upgrade.
13. Remove Mainsail Host	<ul style="list-style-type: none"> ▪ Removed Host ▪ Mainsail host has been removed from WinEPS. Once upgraded to the 827.2 version, this host will no longer be available for processing.
14. b - Verify Card option to Verify Last 4 Card Digits	<ul style="list-style-type: none"> ▪ Fixed ▪ Corrected menu issue with selecting and configuring the b – Verify Card TAC.
15. Invalid socket handle	<ul style="list-style-type: none"> ▪ Fixed ▪ Resolved an issue where the server was receiving repeated Windows errors related to socket disconnects, which affected transaction processing.

WinEPS Fixed Issues and Enhancements

Enhancement	Description
<p>16. SOAP File uploads stream in 1MB packets</p>	<ul style="list-style-type: none"> ▪ Enhancement ▪ File transfer using SOAP now streams files in 1 MB packets. Previously the whole file was loaded into memory and transferred as one packet, which caused larger amounts of memory to be required to transfer successfully.
<p>17. Credit/Fleet Prefix logic change</p>	<ul style="list-style-type: none"> ▪ Enhancement ▪ Updated the WinEPS Fuel interface so that if a transaction is received from fuel lane with a tender type of credit and the card number used is located successfully in both the Credit and Fleet prefix tables, the transaction will be handed as a Fleet transaction, and the request for additional Fleet data will be returned to the fuel lane pump.
<p>18. BDE installation removed</p>	<ul style="list-style-type: none"> ▪ Enhancement ▪ The Borland Database Engine installation has been removed from WinEPS and will no longer install with WinEPS. WinEPS no longer requires the use of BDE. ▪ The Configuration Terminal Configuration > Other Lanes settings have been removed. BDE was previously used for these lanes.
<p>19. EBT voucher with void not set to host</p>	<ul style="list-style-type: none"> ▪ Fixed ▪ Corrected an issue where the Void of an Offline EBT Food voucher transaction is set up to the host, but the original purchase was not. This has been revised so that both the initial purchase and the void are correctly processed to the host.
<p>20. Remove signature lines on Credit Voids</p>	<ul style="list-style-type: none"> ▪ Enhancement ▪ Removed Signature line from Credit Void receipts. Signatures are not required for voids.
<p>21. OpenEPS receipt message format</p>	<ul style="list-style-type: none"> ▪ Fixed ▪ Corrected an issue with unformatting card numbers sent to WinEPS as part of the signature capture receipt transactions.

WinEPS Fixed Issues and Enhancements

Enhancement	Description
<p>22. Update Engine to match current Backup.bat file</p>	<ul style="list-style-type: none"> ▪ Fixed ▪ Resolved an issue where not all files were zipped up into the Backup.Zip file during the end of day process.
<p>23. Added Discover Korean BC Credit Prefix Ranges</p>	<ul style="list-style-type: none"> ▪ Enhancement ▪ New Discover Card ranges have been added to WinEPS for the Korean BC card. These new prefixes are linked to the standard DS Discover card code.
<p>24. Status info listed in the log</p>	<ul style="list-style-type: none"> ▪ Fixed ▪ Corrected the formatting of the status message in the WinEPS Log file, and limited the size of the string printed.
<p>25. CC #'s masking asterisks issue</p>	<ul style="list-style-type: none"> ▪ Fixed ▪ Resolved an issue where after an upgrade, reporting would not correctly display the first 6 and last 4 of the card data.
<p>26. Increase default for archives stored</p>	<ul style="list-style-type: none"> ▪ Enhancement ▪ In the event that the configuration file is missing or corrupted, the default time for storing archives is set to 90 days to allow for troubleshooting and avoid any potential loss of info.
<p>27. SOAP File Download changes</p>	<ul style="list-style-type: none"> ▪ Enhancement ▪ To improve the speed of lanes becoming active, some changes have been made to the SOAP file download feature. Instead of having a 3 minute time out for all files, if the file to be transferred is under 2MB, timer is set to 30 seconds instead; files over 2MB will retain the full 3 minute time out. ▪ File transfers that fail will be retried multiple times, in order to attempt to transfer the time to the lane. ▪ Additional logging has been put in place in the engine to identify the IP address lane that is making the file download request.

WinEPS Fixed Issues and Enhancements

Enhancement	Description
<p>28. Increased memory use getting MAC address</p>	<ul style="list-style-type: none"> ▪ Fixed ▪ Fixed an issue where increased handles and memory use happens when WinEPS Engine perform MAC address checks on the NIC card.
<p>29. Add module date stamp to logging</p>	<ul style="list-style-type: none"> ▪ Enhancement ▪ To improve the ability to identify the files in use, in addition to the standard logging of the module version numbers, the change data will also be reported in the logs.
<p>30. Transaction uses wrong buffer</p>	<ul style="list-style-type: none"> ▪ Fixed ▪ Resolved an issue with the ScanMaster Version 1 interface where transactions coming in from other lanes in the middle of an ongoing transaction were using wrong buffer.
<p>31. MS Discontinued Support for Windows 2000</p>	<ul style="list-style-type: none"> ▪ Deprecate Windows 2000 ▪ According to the Microsoft site, Microsoft has discontinued support for the Windows 2000 operating system. As such, this OS is no longer a supported operating system for the WinEPS/OpenEPS software.
<p>32. Uptime logging error</p>	<ul style="list-style-type: none"> ▪ Fixed ▪ Corrects an issue that would cause “catastrophic error” to be incorrectly and unnecessarily logged in the spool.
<p>33. Lane start up logging</p>	<ul style="list-style-type: none"> ▪ Fixed ▪ Update logs so that lane type logged is consistent with what is listed in WinEPS menu.
<p>34. Add Digital ID config to B TAC</p>	<ul style="list-style-type: none"> ▪ Enhancement ▪ Added Digital ID setting to the B – Slide Card TAC.

WinEPS Fixed Issues and Enhancements

Enhancement	Description
35. Correct ZIP file process failure	<ul style="list-style-type: none"> ▪ Fixed ▪ Corrected an issue where a large number of lane journal files uploaded to WinEPS at the same time would cause zip archiving failures. Archiving is now handed in series by creating a queue of log file to zip.
36. Import of DebitBIN.eps	<ul style="list-style-type: none"> ▪ Fixed ▪ Corrected an issue with the import of the DebitBIN.EPS file provided by the ServerEPS Bin File Service. This file will now import correctly and update the BIN file listing in WinEPS.
37. Log line revision	<ul style="list-style-type: none"> ▪ Enhancement ▪ In WinEPS, when performing a large file upload, a portion of the text contents of that file was being printed to the Spool file; this excess printing has been removed. ▪ Unneeded Debug log lines have been removed. ▪ Additional log lines have been added to the logging process. Some log lines have been removed.
38. Failed write to Actlog no longer processed to host	<ul style="list-style-type: none"> ▪ Fixed ▪ Corrected an error where, if a transaction message sent to WinEPS could not be properly recorded in the Actlog, WinEPS would incorrectly still attempt to send the message to the host. This has been corrected so that the message is not sent to the host, and instead WinEPS will immediately shut down.
39. "No host defined" Error message	<ul style="list-style-type: none"> ▪ Fixed ▪ Corrected an issue where, if multiple lanes signed on at the same time, a warning would incorrectly be logged in the WinEPS GUI.

WinEPS Fixed Issues and Enhancements

Enhancement	Description
<p>40. Offline removal option</p>	<ul style="list-style-type: none"> ▪ Enhancement ▪ A new option has been added to allow the automated removal of pending offlines from archived Actlogs, in order to increase security. ▪ Pending offlines will be rolled to the current day for processing; however because with this option turned on, they are removed from archived logs, in the event of an issue, there will be no backup archive of the stored offline transactions. Users are advised to use this option with caution.
<p>41. Incorrect PAN size resulted in AV</p>	<ul style="list-style-type: none"> ▪ Fixed ▪ Fixed an issue where printing the masked account number to the WinEPS spool file resulted in an Access Violation because the card number data size was incorrect.
<p>42. Update Installation License Text</p>	<ul style="list-style-type: none"> ▪ Enhancement ▪ Updated the Licensing installation text to comply with the new Retalix license format. ▪ Users are encouraged to read the new license text during installation.
<p>43. Incorrect Duplicate decline on Blackhawk activation</p>	<ul style="list-style-type: none"> ▪ Fixed ▪ WinEPS was incorrectly using only the first 6 and last 4 of PAN when checking for duplicate card numbers on Blackhawk activations. This has been corrected so that the entire card number is used.
<p>44. Failure to load Process.XML causes WinEPS to never cut over</p>	<ul style="list-style-type: none"> ▪ Fixed ▪ Corrected an issue where if WinEPS failed to successfully load the Process.XML, WinEPS would then never perform an EOD.
<p>45. Prefix table update to provide line breaks</p>	<ul style="list-style-type: none"> ▪ Fixed ▪ When the prefix table is updated during an upgrade to 827.2 SP1 from previous versions, the table will be formatted to include line breaks.

WinEPS Fixed Issues and Enhancements

Enhancement	Description
46. Windows system date format affects KEK3 logic	<ul style="list-style-type: none"> ▪ Fixed ▪ Corrected an issue where the date/time/language/region settings in Windows would affect the determination of whether the encryption key was expired. All region setting formats are now accepted and handed properly.
47. Engine not responding to transaction from OpenEPS	<ul style="list-style-type: none"> ▪ Fixed ▪ Corrected an issue where the WinEPS engine would not properly respond to an incoming transaction from OpenEPS. This change included modifying the timer for lane shutdown to 60 seconds and setting the stop flag if the lanes are in the process of shutting down.
48. File download improvements	<ul style="list-style-type: none"> ▪ Fixed ▪ Download timeout has been changed to 30 seconds only for files under 2mb instead of 3 minutes to time out. The file will be retried if it fails to download, but will not be retried if the download process determines the file is not present on the server.
49. Windows pop-up error at engine is stop	<ul style="list-style-type: none"> ▪ Fixed ▪ Corrected an issue where an error popup would be displayed at WinEPS engine stop.
50. Windows Time/Date Format display	<ul style="list-style-type: none"> ▪ Fixed ▪ Allows all regional and language specific settings in windows to properly display in the menu and spool file.
51. Engine Fails to Start with certain Regional Formats set	<ul style="list-style-type: none"> ▪ Fixed ▪ Using certain Regional language settings would not allow the engine to start properly and produce a related pop up error. The engine has been updated to correctly respond to different formats.

WinEPS Fixed Issues and Enhancements

Enhancement	Description
52. Takes Two Button Presses to Stop Engine	<ul style="list-style-type: none"> ▪ Fixed ▪ Fixed the issue when attempting to stop the engine required the user to select stop twice. This has been corrected so that two stop commands is no longer required.is no longer required.
53. Signature Response message error after upgrade	<ul style="list-style-type: none"> ▪ Fixed ▪ Corrected an issue where the 0330 signature response message was using the wrong lane and sequence number.
54. OpenEPS Cashback error	<ul style="list-style-type: none"> ▪ Fixed ▪ Corrected an issue where WinEPS was sending the incorrect cashback amount to OpenEPS on partially approved transactions where only some or none of the cashback amount was approved.
55. Velocity message is not being sent to the lane, GUI and Engine logging	<ul style="list-style-type: none"> ▪ Fixed ▪ Corrected an issue where velocity messages were not being passed to the lane. Added logging to note the velocity message in the spool file. ▪ Also corrected an issue where velocity data wasn't being written to the InfoMsg file so that the GUI can pick up that data, and display it to the user, when the user double clicks on the transaction on the WinEPS GUI.
56. Updated settings to prevent SSL/TLS renegotiation attack	<ul style="list-style-type: none"> ▪ Enhancement ▪ WinEPS, OpenEPS and its host modules that use SSL/TLS have been updated to prevent renegotiation attacks.
57. Backup Config Batch file storing the Lane Message	<ul style="list-style-type: none"> ▪ Fixed ▪ Corrected an issue where the backup zip file incorrectly contained the lane message file.

WinEPS Fixed Issues and Enhancements

Enhancement	Description
<p>58. Add 556X to Credit Prefix as MC</p>	<ul style="list-style-type: none"> ▪ Enhancement ▪ On an upgrade or new install the credit card prefix of 556XXXXXXX will be added to the Prefix table as a Mastercard.
<p>59. Void of Offline sent online and not checking Offline Queue</p>	<ul style="list-style-type: none"> ▪ Fixed ▪ Corrected an issue where voiding a transaction in the offline file would not work if an offline transaction was in flight.
<p>60. New Option to prevent Customer Name from being logged</p>	<ul style="list-style-type: none"> ▪ Enhancement ▪ Added option that can remove the customer name from all logging by masking the customer name fields in OpenEPS and no longer sending the customer name up to WinEPS. ▪ This option will not retroactively remove logged names from already existing OpenEPS jrnl files and WinEPS spool files; it only prevents logging after the option it enabled, and the settings are passed down to each lane. ▪ Full details on this are included in Section 2.
<p>61. Transaction incorrect Date/Time due to status message</p>	<ul style="list-style-type: none"> ▪ Fixed ▪ Corrected an issue where OpenEPS was setting the incorrect transaction date and time on transaction messages due to the status message not clearing its own time/date values from memory.
<p>62. Log IP and Port</p>	<ul style="list-style-type: none"> ▪ Enhancement ▪ Improved logging to include the IP address and port for all communications.
<p>63. Failed XML load after EOD</p>	<ul style="list-style-type: none"> ▪ Fixed ▪ Corrected an issue where the Lanes.XML failed to load after an End of Day.

WinEPS Fixed Issues and Enhancements

Enhancement	Description
64. TOR created without correct transaction type	<ul style="list-style-type: none"> ▪ Fixed ▪ Corrected an issue where, if WinEPS shut down once a transaction was in flight, the TOR for that message did not have the correct Message Type.
65. Failure to match TOR Seq# provided bad response	<ul style="list-style-type: none"> ▪ Fixed ▪ Corrected an issue where, if a TOR was sent in to WinEPS from a lane, and WinEPS did not receive the initial transaction, there would be errors on the reply message back to OpenEPS.
66. Zip Process Enhancement	<ul style="list-style-type: none"> ▪ Enhancement ▪ Prior to beginning the file zipping process for archiving, WinEPS will verify that the Archive folder is present; if it is not, the folder will be created. ▪ Additionally, if the zip process itself fails, this will now be noted in the log file, and the jrnl file that was to be zipped will now be moved directly to the Archive folder for storage instead of just deleted.
67. Silent Install upgrade from Local System to Specific user account	<ul style="list-style-type: none"> ▪ Enhancement ▪ The upgrade process has been enhanced to update the account under which WinEPS is running to use the credentials supplied during the installation. The installation will abort if no new credentials are supplied and WinEPS was previously running under the Local System Account.

OpenEPS Changes

Enhancement	Description
<p>1. POSVerifyCardLast4 incorrectly defined</p>	<ul style="list-style-type: none"> ▪ Fixed ▪ Corrected the POSVerifyCardLast4 function call so that it is properly defined as per the specification.
<p>2. Tender Type Status set to Loop for Gift and EBT</p>	<ul style="list-style-type: none"> ▪ Fixed ▪ Corrected an issue where the tender type status was not being set to OK if the POS set EBT Food or Gift as the tender, with the \$ - Purch/Bal Inq TAC in the transaction sequence.
<p>3. OpenEPS Not Downloading Files from Backup Server</p>	<ul style="list-style-type: none"> ▪ Fixed ▪ Corrected an issue where OpenEPS would not switch over to the backup WinEPS server to download files when the primary server was no longer available.
<p>4. Revise credit cash back</p>	<ul style="list-style-type: none"> ▪ Fixed ▪ To prevent unnecessary prompting, the Cashier Ok Cashback TAC will not be processed for credit when the cashback amount is \$0.
<p>5. Travelers Checks declined for cash back only</p>	<ul style="list-style-type: none"> ▪ Fixed ▪ Fixed an issue with Travelers checks being incorrectly declined at the POS if only cash back was entered.

Enhancement	Description
<p>6. Freq Shopper / Digital ID Enhancement</p>	<ul style="list-style-type: none"> ▪ Enhancement ▪ Added a new feature to the B - Slide Card TAC to display a Digital ID button. ▪ When configured and using the screen files that support this new button, the Digital ID button will appear on the screen for customer selection. The customer can then either slide their payment card or select the Digital ID button. When selected the customer is prompted for their Frequent Shopper number, which is then stored in the FrequentShopperData function for the POS to pick up. ▪ New screen files for Digital ID support are available for the MX terminals only. ▪ When a customer uses the new Freq Shopper / Digital ID and enters a number on the PIN Pad, the value entered will be set to the new FrequentShopperData function. ▪ To supplement the acquisition of the Digital ID, the new FrequentShopperData function has been added. See next enhancement.
<p>7. New FrequentShopperData function & Data Entry Mode 13</p>	<ul style="list-style-type: none"> ▪ Enhancement ▪ A new FrequentShopperData function call has been added to allow POS to pick up data after customer selects Freq Shopper/Digital ID button. ▪ A new EntryMode of 13 (Numeric entry OR Payment Card Slide) is now available for the Data Entry function call. This Entry Mode is used in DigitalID prompting, and activates both the keyboard and the MSR, with any keyboard entry placed in DataEntryValue, and the Card swipe treated as a payment card. ▪ When using the DataEntry call new EntryMode Value of 13, if OpenEPS gets a numeric entry by the customer, the value will be set in both the standard DataEntryValue function, and OpenEPS will also populate the FrequentShopperData function with that same entered value.

Enhancement	Description
<p>8. DataEntry Continue</p>	<ul style="list-style-type: none"> ▪ Enhancement ▪ Added new call DataEntryContinue to OpenEPS that the POS can call in order to instruct OpenEPS to move on to the next action sequence.
<p>9. Revise OpenEPS startup</p>	<ul style="list-style-type: none"> ▪ Enhancement ▪ Improved OpenEPS startup routine in order to avoid potential issues that could cause hanging.
<p>10. New function to provide original card type to POS</p>	<ul style="list-style-type: none"> ▪ Enhancement ▪ The new WinEPSCardTypeOriginal function has been added to OpenEPS that provides the Card Type data prior to any conversion of the card type to FSA. This function is useful in determining the original card type used by the customer in an FSA transaction.
<p>11. Driver's License invalid card</p>	<ul style="list-style-type: none"> ▪ Fixed ▪ Resolved an issue where sliding a driver's license in place of a check read would always cause an "Invalid Card Decline."
<p>12. Customer display not correct on manual entry</p>	<ul style="list-style-type: none"> ▪ Fixed ▪ Fixed issue when manual entry is selected during the transaction, and get PAN from PIN pad is not set, the appropriate prompt was not displayed.
<p>13. File Downloading impacts payment connection</p>	<ul style="list-style-type: none"> ▪ Fixed ▪ Corrected an issue where file downloads that took a long period of time, or that failed were causing the payments connection from the lane to WinEPS to disconnect. The issue has been corrected by limiting the re-tries of failed files, and ensuring that the payments connection does not disconnect regardless of the success or failure of the file downloading.
<p>14. Unsupported card error when Raw MICR set as Primary ID</p>	<ul style="list-style-type: none"> ▪ Fixed ▪ Corrected an issue with PrimaryID getting invalid MICR when Raw MIRC was set in the field.

Enhancement	Description
<p>15. Void Last transactions getting MTX-131 declines</p>	<ul style="list-style-type: none"> ▪ Fixed ▪ Corrected an issue where Void Last transactions were receiving a decline incorrectly.
<p>16. Check with Secondary ID and cashback issue</p>	<ul style="list-style-type: none"> ▪ Fixed ▪ Corrected an issue where a check that uses the Secondary ID Prompt for Check Type with the customer cash back TAC would cause the POS to loop indefinitely on waiting for the SCAT Status.
<p>17. Transaction not found for eWic TOR request from OpenEPS</p>	<ul style="list-style-type: none"> ▪ Fixed ▪ Fixed an issue where eWic PreAuth Completion TOR was not properly matched with the transaction list when sent to WInEPS.
<p>18. POS slowdown and lockup</p>	<ul style="list-style-type: none"> ▪ Fixed ▪ Resolved an issue where an OpenEPS thread was left running after signoff, resulting in slow signons and slow POS response due to the extra CPU usage.
<p>19. Expired Certificates preventing communication</p>	<ul style="list-style-type: none"> ▪ Fixed ▪ Resolved an issue that prevented OpenEPS from opening a communication socket to WinEPS, due to expired certificates.
<p>20. Stand In at the POST fails if no sign in response</p>	<ul style="list-style-type: none"> ▪ Fixed ▪ Corrected an issue in OpenEPS where after OpenEPS connects successfully to WinEPS and sends the 0800 sign on message, if OpenEPS does not receive the 0810 sign on response OpenEPS will not perform any Stand in at the lane processing.

Enhancement	Description
21. Data Entry Skipping PIN Entry	<ul style="list-style-type: none"><li data-bbox="566 327 672 354">▪ Fixed<li data-bbox="566 426 1406 583">▪ Corrected an issue where if the POS called for a DataEntry at the point where OpenEPS was requesting a PIN from the customer, after the POS called the Continue function, OpenEPS would not correctly go back to requesting the PIN. This has been fixed, so that the PIN is requested after the Continue.

OpenIP Changes

Enhancement	Description
1. - No Change to OpenIP -	---

Term Handler Changes

Enhancement	Description
1. - No Change to Term Handler -	---

Host Changes

ACI

Enhancement	Description
1. ACI host use timer delay on offlines	<ul style="list-style-type: none"> Enhancement Updated ACI host to use the 'secs to wait to cycle offline queue' setting when determining the time for sending out an offline generated by a Try for Local response from the host.
2. Debit BIN import incorrect	<ul style="list-style-type: none"> Fixed Corrected an issue where the debitbin.txt file was not correctly imported into WinEPS at the end of day, resulting in incorrect card ranges.
3. Corrected PrePaidBin.txt import at EOD	<ul style="list-style-type: none"> Fixed Corrected an issue where the PrePaidBin.txt was not properly importing. This has been corrected so that the import works properly when the ACI host is defined.
4. Fail to load certs from windows	<ul style="list-style-type: none"> Fixed Fixed an issue where the ACI host would not start successfully if Windows certificates failed to load.

Ascendent

Enhancement	Description
1. - No Change to Host -	---

Concord: EPC

Enhancement	Description
1. TOR deletion & formatting	<ul style="list-style-type: none"> ▪ Fixed ▪ Corrected an issue with TOR declines that were not being deleted properly. ▪ Also corrects an issue with TOR formatting that was not including the original request code type that the TOR is attempting to Void.

Concord: H&C Format

Enhancement	Description
1. Correct manual checks to 1st Data	<ul style="list-style-type: none"> ▪ Fixed ▪ Corrected manual checks so that that WinEPS sends Transit and account info, as well as sending the Check number in Fid h, while keeping the MICR type as 18.
2. Valulink TOR sending Pan and Exp Date instead of Track2	<ul style="list-style-type: none"> ▪ Fixed ▪ Corrected an issue where WinEPS was not sending the discretionary data on ValuLink Gift Card TORs.
3. SVS Offline Gift Card Redemption Authorization	<ul style="list-style-type: none"> ▪ Enhancement ▪ A new feature has been added to convert Gift Card Redeem transactions that are attempted offline into Voice Authorizations. ▪ To assist in supporting this feature, the M - Auth Number TAC has a new "Request SVS Auth Number" setting; when this option is selected the SVS Auth number will be requested instead of the standard authorization number. ▪ Full details on this are included in Section 2.

Enhancement	Description
4. BIN Update Lag	<ul style="list-style-type: none"> ▪ Fixed ▪ The Bypass partial BIN update process was saving the BIN file record after each and every record update, which was significantly slowing the update process. This has been corrected so that the BIN file is saved one time at the end of the update process only.
5. Offline Gift Card Redemption	<ul style="list-style-type: none"> ▪ Fixed ▪ Updated OpenEPS to provide the SVSAuthNumber field to WinEPS in the transaction message. ▪ SVS Gift Card Force transactions will now be sent to the H&C host using a transaction code of 92.
6. Missing the delimiter [=] for the manual eWic transaction	<ul style="list-style-type: none"> ▪ Fixed ▪ Corrected an issue where the Concord H&C host was missing the delimiter [=] for manual entry eWic transactions.
7. BIN Prefixes download update	<ul style="list-style-type: none"> ▪ Fixed ▪ Revised logic for adding/removing BIN Prefixes during a partial BIN download from Concord H&C. ▪ Added additional logging to the BIN download processing to ensure that the type and result of each BIN file line is recorded.
8. TORs of manually entered transactions sent with “=”	<ul style="list-style-type: none"> ▪ Fixed ▪ Fixed format message issue for manual TOR transactions where '=' was incorrectly included. Instead a space will be used as the separator character.
9. EPSMenu not allowing selection of Partial BIN Download	<ul style="list-style-type: none"> ▪ Fixed ▪ Fixed an issue where the WinEPS Menu did not allow the selection of Partial BIN Download for the Concord H&C host.

Host Changes

Enhancement	Description
10. Failing to send check number in blockout to host	<ul style="list-style-type: none"> Fixed Corrected an issue where the message out to the host did not properly contain the check number during a check transaction, when Buycheck was defined.
11. BIN update completion message	<ul style="list-style-type: none"> Enhancement Added a completion message to the end of the Concord H&C Partial BIN download process, so that the host will be notified when an update succeeds.
12. Invalid eWic TOR message: issuing fields	<ul style="list-style-type: none"> Fixed Fixed an issue where the eWic PreAuth Completion TOR was not being sent to host.

Concord: Memphis

Enhancement	Description
1. Declines for \$0 Amount	<ul style="list-style-type: none"> Fixed Corrects an issue with the Concord: Memphis host that was incorrectly declining an approved \$0 completion.

Demo

Enhancement	Description
1. - No Change to Host -	---

ePicTranz

Enhancement	Description
1. - No Change to Host -	---

FLC Check Host

Enhancement	Description
1. New FLC Host	<ul style="list-style-type: none"> ▪ Enhancement ▪ The New FLC Check Host has been added to WinEPS for the PULSE Project. ▪ This check host includes new functionality handling a new Soft Approval and 2 new Soft Decline types. ▪ Full details on this are included in Section 2.

ISD Host

Enhancement	Description
1. New ISD Host	<ul style="list-style-type: none"> ▪ Enhancement ▪ Added the new ISD host to WinEPS. ▪ The Following transaction types are supported: <ul style="list-style-type: none"> Credit: purchase and return (includes FSA transactions). Pre-auth and completions for fuel purchase transactions. Debit: purchase and purchase with cash back. EBT Food Stamp: purchase, return, voucher and balance inquiry EBT Cash: purchase, purchase with cash back, return, voucher and balance inquiry Gift Card: (in-house) activate, redeem, return and balance inquiry Blackhawk GC: activation Checks: purchase with paper checks only Fleet: Pre-auth and completions for fuel purchase transactions. <ul style="list-style-type: none"> ○ Only WEX fleet cards are supported and only accepted at the pumps. ○ Fuel is not yet complete due to need to implement on the ISD side. ▪ The ISD host supports a global BIN import process where the BIN information is provided in a DebitBIN.txt file that is placed into the EPS folder. ▪ During the EOD process WinEPS performs a total import on the provided DebitBIN.txt, clearing out any previous BIN data and updating to the latest information. ▪ There is no close of batch message; this implementation of the ISD host does not require one. ▪ Full details on this are included in Section 2.

LML

Enhancement	Description
1. Gift Card balances being applied as partial approvals	<ul style="list-style-type: none"> ▪ Fixed ▪ Corrects an issue where the incorrect field was being used for partial approval and remaining balance for gift card.
2. Sending bad TOR message	<ul style="list-style-type: none"> ▪ Fixed ▪ Corrects an issue where WinEPS was not sending "PAN=exp date" for TORs. Also fixes an issue where WinEPS was not responding correctly to a D07 response code in regards to approving / declining offline.
3. Update LML D07 to an ND	<ul style="list-style-type: none"> ▪ Fixed ▪ The update program has been enhanced to modify the LML D07 response code from an AB (approval) to a correct value of ND (declined).
4. Fix LL entry in CSV export	<ul style="list-style-type: none"> ▪ Fixed ▪ Prevents letters returned in the credit / debit balance fields from showing up in the CSV export.

RBS WorldPay / RBS Lynk

Enhancement	Description
1. Blackhawk requires LA#	<ul style="list-style-type: none"> ▪ Fixed ▪ Corrected an issue with Lynk host Blackhawk Gift Cards where the WinEPS local authorization number was not properly passed to the host in the Auth Code field on activations.
2. Access Violation When Unloading Host Module	<ul style="list-style-type: none"> ▪ Fixed ▪ Corrects an access violation that could occur when unloading the host during engine shut down.

Enhancement	Description
3. Host vs. Store Report for reporting all zeroes	<ul style="list-style-type: none"> Fixed Resolved an issue where the WinEPS reports were incorrectly displaying a zero value for the Host vs. Store/Settlement report.
4. New prefix matching file and hard coded values	<ul style="list-style-type: none"> Enhancement Updated the host card prefixes; this will supply the link host with the correct card type when card info is sent to the host during a transaction.

LX1 & LX2 (Check) Hosts

Enhancement	Description
1. Slot released too early on invalid partial approval	<ul style="list-style-type: none"> Fixed Corrected an issue where a partial approval returned for a lane that does not support partial approvals would result in WinEPS releasing the slot prior to the reversal being sent up. The slot is now held until the reversal is sent.
2. Track data max is 40 characters	<ul style="list-style-type: none"> Enhancement Track data sent to the LX host will now be limited to a total length of 40 characters, including beginning and ending sentinels.
3. Renegotiation Attack Prevention Mode set to Strict	<ul style="list-style-type: none"> Enhancement For the LX host, the Renegotiation Attack Prevention Mode will be set to 'Strict', which will prevent any renegotiation attack vulnerability. The LX host has been tested and confirmed as supporting the Strict mode.
4. Host 10054 error	<ul style="list-style-type: none"> Fixed Corrected an issue where, when WinEPS gets a 10054 TCP/IP error, it did not successfully reconnect to the host. This has been corrected so that 10054 errors are minimized as well as 10054 errors no longer preventing a reconnect.

Enhancement	Description
5. ID Tech, Limited Environment Support	<ul style="list-style-type: none"> ▪ Enhancement ▪ Added support for the ID Tech Magnetic Stripe Reader within a limited environment.
6. Settlement message offline forward not properly deleting	<ul style="list-style-type: none"> ▪ Fixed ▪ Corrected an issue where, if a settlement message timed out and was placed into the offline queue, when it forwarded up, the offline was not properly removed from the actlog, which resulted in the offline settlement being sent up multiple times.

Mainsail

Enhancement	Description
1. - No Change to Host -	---

Mercury

Enhancement	Description
1. - No Change to Host -	---

MPS (Fifth Third)

Enhancement	Description
1. Sending Spaces for Pin and KSN for TORs and Voids	<ul style="list-style-type: none"> ▪ Enhancement ▪ The MPS host was updated to match the most recent specification. ▪ Debit and EBT TORs/Voids now send spaces in bit 52 (PIN) and 117 (KSN); previously those fields were zero filled.
2. Host Drops During TOR Processing	<ul style="list-style-type: none"> ▪ Fixed ▪ Fixed an issue where WinEPS would drop TORs at the server due to possible socket disconnection.

MTX Receipt Capture Host

Enhancement	Description
1. Receipt account number field corrupted	<ul style="list-style-type: none"> ▪ Fixed ▪ Fixed an issue with corrupted account numbers on uploaded receipts.

Schnucks Check Auth

Enhancement	Description
1. - No Change to Host -	---

ServerEPS (Native Format)

Enhancement	Description
1. - No Change to Host -	---

SVDot Gift Card Host

Enhancement	Description
1. Declines for \$0 Amount	<ul style="list-style-type: none"> ▪ Fixed ▪ Corrects an issue with SVDot host that was incorrectly declining an approved \$0 completion.

Terminal Code Changes

Hypercom ICE5500

Enhancement	Description
1. Remove support for Ice 5500	<ul style="list-style-type: none"> ▪ Terminal removed ▪ Removed support for the Hypercom Ice 5500 terminals from WinEPS.

Hypercom L4100

Enhancement	Description
1. WIC Enhancement: Remove Card	<ul style="list-style-type: none"> ▪ Enhancement ▪ Improved the handling of the "Remove_WIC_ICC" POS call to enable the Hypercom PIN pads to display an appropriate message.
2. Remove Hypercom Scrolling Receipt screen File sets	<ul style="list-style-type: none"> ▪ Update ▪ As the Scrolling Receipt and Standard screen files have been combined, the older Scrolling Receipt Only screen files for the Hypercom terminals have been removed from the fresh installation. ▪ These files have been removed: <ul style="list-style-type: none"> Hypercom 4100 with Scrolling Receipt.zip Hypercom 4100 with Scrolling Receipts.zip Hypercom 4150 with Scrolling Receipt.zip Hypercom 4150 with Scrolling Receipts.zip Hypercom 4150 PClv2 with Scrolling Receipt.zip Hypercom 4150 PClv2 with Scrolling Receipts.zip

Hypercom L4150

Enhancement	Description
1. WIC Enhancement: Remove Card	<ul style="list-style-type: none"> ▪ Enhancement ▪ Improved the handling of the “Remove_WIC_ICC” POS call to enable the Hypercom PIN pads to display an appropriate message.
2. Remove Hypercom Scrolling Receipt screen File sets	<ul style="list-style-type: none"> ▪ Update ▪ As the Scrolling Receipt and Standard screen files have been combined, the older Scrolling Receipt Only screen files for the Hypercom terminals have been removed from the fresh installation. ▪ These files have been removed: <ul style="list-style-type: none"> Hypercom 4100 with Scrolling Receipt.zip Hypercom 4100 with Scrolling Receipts.zip Hypercom 4150 with Scrolling Receipt.zip Hypercom 4150 with Scrolling Receipts.zip Hypercom 4150 PCIV2 with Scrolling Receipt.zip Hypercom 4150 PCIV2 with Scrolling Receipts.zip

Hypercom L4150 PCI 2.0

Enhancement	Description
1. WIC Enhancement: Remove Card	<ul style="list-style-type: none"> ▪ Enhancement ▪ Improved the handling of the “Remove_WIC_ICC” POS call to enable the Hypercom PIN pads to display an appropriate message.

Hypercom L4250

Enhancement	Description
1. WIC Enhancement: Remove Card	<ul style="list-style-type: none"> ▪ Enhancement ▪ Improved the handling of the "Remove_WIC_ICC" POS call to enable the Hypercom PIN pads to display an appropriate message.

Hypercom L5300

Enhancement	Description
1. Add HYP5300 to WinEPS	<ul style="list-style-type: none"> ▪ Enhancement ▪ Added support for the Hypercom 5300 terminal. ▪ Terminal code for this terminal is not yet available.
2. 5300 Requires update for WIC	<ul style="list-style-type: none"> ▪ Notification ▪ If using the 5300 terminal for eWIC/SmartWIC, new code is required. The latest code for eWIC/SmartWIC is available on the WinEPS CD. ▪ The terminal code for is out on CD in: [WinEPS 827.2 SP1 CD]:\OpenEPS\SCAT Code\HYP5300\EWIC Code

Ingenico eN-Crypt 2100

Enhancement	Description
1. - No Change to Terminal Code -	---

Ingenico eN-Touch 1000

Enhancement	Description
1. - No Change to Terminal Code -	---

Ingenico 6550 / 6780

Enhancement	Description
1. - No Change to Terminal Code -	---

Verifone Everest

Enhancement	Description
1. - No Change to Terminal Code -	---

Verifone MX830/MX850/MX860/MX870/MX880

Enhancement	Description
1. Allow Cent Entry for Customer Cash Back on MX terminals	<p>Enhancement</p> <ul style="list-style-type: none"> ▪ A new option has been added to the Terminal Configuration, PIN Pad Configuration Tab that will allow customer entered cashback amounts to be in cents instead of whole dollars for the MX 800 series terminals. ▪ This change only affects the “Other” cashback button where customers can determine and enter their own cashback amount. Other default amounts will remain in whole dollars.
2. MX terminal code to 221e	<ul style="list-style-type: none"> ▪ Certification ▪ The latest MX code version 221e has been included in the WinEPS installation.
3. Send Packages Info in Status Message	<ul style="list-style-type: none"> ▪ Enhancement ▪ Expand the status MX status message field to add an <AdditionalInfo> tag where the package info can be sent to WinEPS for monitoring and reporting purposes.
4. Add Tender buttons 5 and 6 to MX880 terminal	<ul style="list-style-type: none"> ▪ Enhancement ▪ The MX880 terminal interface has been improved by adding in support for buttons 5 and 6.

Terminal Code Changes

Enhancement	Description
<p>5. Add Min and Max Length to Digital ID data entry request</p>	<ul style="list-style-type: none"> ▪ Enhancement ▪ Added a new enhancement to the Digital ID prompt, to allow the customer to select the length of the customer entered data. ▪ The Min/Max value can be set from 1 to 40 characters. ▪ This functionality as available only for the following terminals: <ul style="list-style-type: none"> ○ MX 860 ○ MX 880 ○ MX 830 ▪ NOTE: Not all terminals respect the minimum value provided to them by OpenEPS.
<p>6. Replace previous MX PIN Pad Form Agent with new 231Q</p>	<ul style="list-style-type: none"> ▪ Enhancement ▪ Updated the MX terminal form agent screen zips packages to the latest 231Q MX Form Agent Code.

Verifone Mx760/OP 4100

Enhancement	Description
<p>1. - No Change to Terminal Code -</p>	<p>---</p>

Verifone Omni 7000

Enhancement	Description
1. Omni 7000 terminal code not downloading	<ul style="list-style-type: none"> ▪ Fixed ▪ Corrected an issue where the terminal code for the Omni 7000 was not properly included in the installation for download to the lanes.
2. Omni 7000 code version 57	<ul style="list-style-type: none"> ▪ Certification ▪ Version 57 of the Omni 7000 terminal code has been certified and is now included in the WinEPS installation.

VeriFone Vx670 (Wireless Terminal)

Enhancement	Description
1. - No Change to Terminal Code -	---

Stand Beside Code Changes

Verifone Vx570

Enhancement	Description
1. Correct gzip bug	<ul style="list-style-type: none">FixedRemoved change to the GZIP routine that prevented code update to the v51 code.
2. VX-570 code updated to handle unused items	<ul style="list-style-type: none">FixedUpdated terminal code to ignore unused bits in incoming messages, and to handle unused tags in downloaded XML configuration files.
3. Version 52 terminal code for the VX-570 terminal	<ul style="list-style-type: none">CertificationVersion 52 (9/7/2011) of the Vx570 terminal code has been certified.

External Program Changes

Engine Monitor and Tray Icon

Enhancement	Description
1. - No Change to Engine Monitor and Tray Icon -	---

IBM Interface

Enhancement	Description
1. Buffering IBM Check data (827.2)	<ul style="list-style-type: none"> ▪ Fixed ▪ Corrected an issue where RAW MICR data provided by IBM Lanes was incorrectly buffered from previous transections when processed to Certegy.
2. IBM Settings no longer deleted on Upgrade	<ul style="list-style-type: none"> ▪ Enhancement ▪ IBM settings will no longer be deleted when upgrading from older versions to 827.2 SP1.
3. IBM getting MTX-101 Decline, when 101 should be approval	<ul style="list-style-type: none"> ▪ Fixed ▪ Corrected an issue where transactions were incorrectly reported as a 101 decline in the WinEPS reports where a 101 code indicates an approval.

OMNI 7000 Scanmaster Code

Terminal code for the Scanmaster system is written and maintained by Concord. It is distributed on the WinEPS installation CD for convenience only.

Enhancement	Description
1. - No Change to OMNI 7000 Scanmaster Code-	---

Redundancy Service

Enhancement	Description
1. RS will remove expired archives from Backup	<ul style="list-style-type: none"> ▪ Enhancement ▪ The redundancy service has been enhanced to remove expired archive files from the Backup server. RS uses the WinEPS archive settings to determine when archive files expire, so no additional configuration is required for this enhancement. ▪ Archive files are deleted securely, to comply with PCI requirements.
2. RS Archive viewing error	<ul style="list-style-type: none"> ▪ Fixed ▪ Corrected an issue where viewing the Archived RS reports would incorrectly overwrite and delete the current actlog.
3. RS Logging and Messaging Improvements	<ul style="list-style-type: none"> ▪ Enhancement ▪ Redundancy Service logging has been improved for clarity. All WinEPS communication lines will be logged with "WINEPS MESSAGE", failed synchs will be displayed on the RS GUI; File transfer will be logged as OK, Failed or Hashes Match, No Transfer.
4. Build the transaction list after critical file synch	<ul style="list-style-type: none"> ▪ Enhancement ▪ To improve performance, RS will now build the actlog transaction list just after the critical file transfer.

External Program Changes

Enhancement	Description
5. Engine crash due to RS disconnect	<ul style="list-style-type: none"> ▪ Fixed ▪ Fixed an issue that would cause the WinEPS engine to give access violations each time that the RS service disconnected, eventually leading to an engine crash. This has been corrected so that connectivity to other systems does not cause an AV and disconnections no longer cause any issues.
6. EPS paths in registry not updated when RS starts	<ul style="list-style-type: none"> ▪ Fixed ▪ Fixed an issue where the RS service did not update the EPS path in the registry when RS started.
7. Not handling large signature transaction replications	<ul style="list-style-type: none"> ▪ Fixed ▪ Corrected an issue where, if the signature message was too large, the message would be discarded instead of properly replicated to the backup. Signatures are now replicated properly to the backup RS server.
8. Remove excessive log line	<ul style="list-style-type: none"> ▪ Fixed ▪ Removed excessive logging of the 'not connected to WinEPS' message.
9. RS: Update RS to transfer the Transmission Number	<ul style="list-style-type: none"> ▪ Fixed ▪ Corrected an issue where RS did not transfer the Transmission Number to the backup for transactions to the LX / LX2 hosts.

UpdateXMLFiles.Exe

Enhancement	Description
1. - No Change to UpdateXMLFiles.Exe-	---

Virtual Terminal 2

Enhancement	Description
1. - Virtual Terminal 2-	---

Voucher Clear Application

Enhancement	Description
1. Allow 'Never Expires' option for Voucher Operators	<ul style="list-style-type: none"> ▪ Enhancement ▪ To allow Voucher Clear user accounts to persist, the Operator account screen has been updated to allow the selection of the “Never Expires” option if the Operator account created has the Voucher Clear application access right. ▪ Operator accounts designed to access the voucher clear application are recommended to only have access to that application, and not to WinEPS functionality.
2. Voucher Clear unable to log in to WinEPS after upgrade	<ul style="list-style-type: none"> ▪ Fixed ▪ Fixed invalid expired password issue for VoucherClear logins that occurred after an upgrade, when a domain user was set up in the operator file.

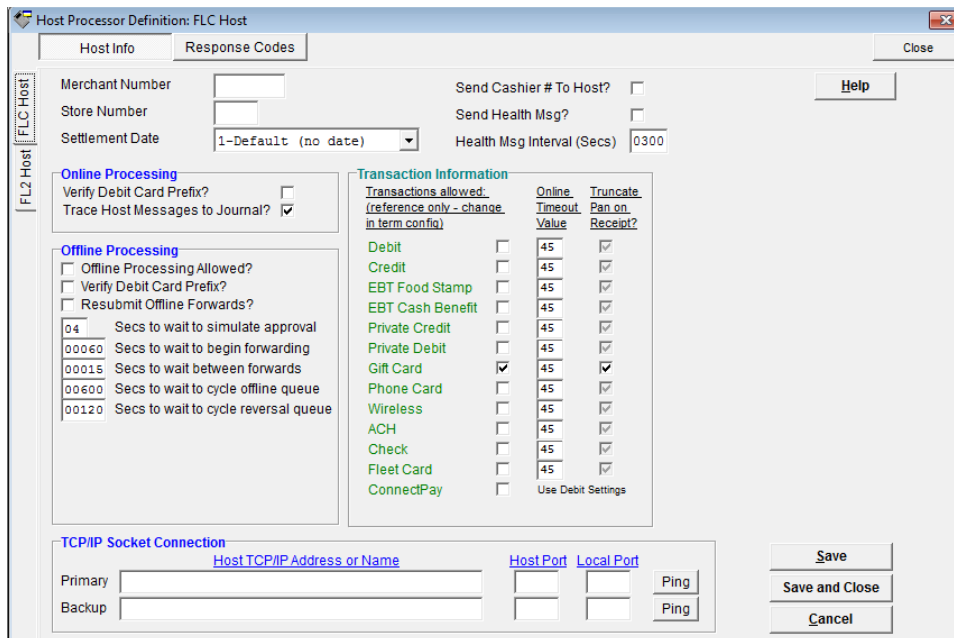
Section 2

New Features

New FLC Check Host

FLC Host Processor Definition Screen

This screen contains all the configuration options pertaining to the selected host.



FLC Host Info Screen

Enhancement	Description
Merchant Number	Supplied by host
Store Number	Supplied by host
Settlement Date	Default (No Date) Current date Current data minus 1
Online Processing	Verify Debit Card Prefix? <ul style="list-style-type: none"> ▪ Check this box to force verification of Debit prefixes against the WinEPS debit bin file Trace Host Messages <ul style="list-style-type: none"> ▪ Should always be checked; this provides additional information for troubleshooting.
Offline Processing	Offline Processing allowed? <ul style="list-style-type: none"> ▪ Indicates whether offline processing for this host is allowed. Verify Debit Card Prefix? <ul style="list-style-type: none"> ▪ Check this box to force verification of Debit prefixes against the WinEPS debit bin file Resubmit Offline Forwards? <ul style="list-style-type: none"> ▪ Check to save and resubmit offline forwards that were declined due to insufficient funds; attempts over the next several days to complete the offline transaction.
Send Health Msg?	If checked, a health message is sent to the host.

Enhancement	Description
Health Msg Interval (Secs)	If the Send Health Msg? option is checked, this option determines how often the health message is sent up, in seconds.
Primary Addr or Name	Supplied by host
Backup Addr or Name	Supplied by host

Buttons	Description
Help	Brings up this Help screen
Save	Saves configuration changes without closing screen.
Save and Close	Saves configuration changes and closes the screen.
Cancel	Closes screen without saving changes.

FLC Supported Transaction Types

	Purchase / GC Redeem	Purch w/ CB	Cash Back Only	Return	Force [Voice/Voucher]	Return Voucher	Balance Inquiry	Activation	Deactivation	Recharge	PreAuth / Completion
ACH	X	X	X	X	X	NA	NA	NA	NA	NA	X
Check (Electronic Check Conversion)	O (VO)	O (VO)	O (VO)	NA	X	NA	NA	NA	NA	NA	NA
Check (Standard)	O (VO)	O (VO)	O (VO)	NA	X	NA	NA	NA	NA	NA	NA
Connect Pay	X	NA	NA	X	NA	NA	NA	NA	NA	NA	NA
Credit Card	X	X	X	X	X	NA	NA	NA	NA	NA	X
Debit	X	X	X	X	NA	NA	NA	NA	NA	NA	X
EBT – Cash	X	X	X	X	X	NA	X	NA	NA	NA	X
EBT – Food Stamp	X	NA	NA	X	X	NA	X	NA	NA	NA	NA
Fleet	X	NA	NA	X	X	NA	NA	NA	NA	NA	X
Gift Card	B	NA	NA	X	X	NA	X	X	X	X	X
Phone Card	NA	NA	NA	NA	NA	NA	NA	X	X	X	NA
Private Credit	X	X	X	X	NA	NA	NA	NA	NA	NA	X
Private Debit	X	X	X	X	NA	NA	NA	NA	NA	NA	X
Wireless	NA	NA	NA	NA	NA	NA	NA	X	X	X	NA

Legend:
O – Online only
B – Both On & Offline
B/Disc – As **B**, with Discover Card only
(V) – Transaction Can be Voided
(VO) – Can be Voided Online Only
X – Not Supported
NA – Not Applicable to Transaction Type

FLC Additional Information

ECC Conversion can only occur for online transactions

Offline check approvals are governed by the standard Offline amounts, as defined in the Card Processing Profile. If the transaction is under the approval amount, the check will be approved as a paper auth and the cashier will need to keep the check.

Offline Paper check auths are not stored and forwarded to the host

Offline Void of Online ECC is stored and sent up to the host later, when the host connection is reestablished.

Voids of Paper Auth checks are supported, but are not required to be performed, as paper auths are not considered financial transactions.

The FLC host supports using the following new response codes:

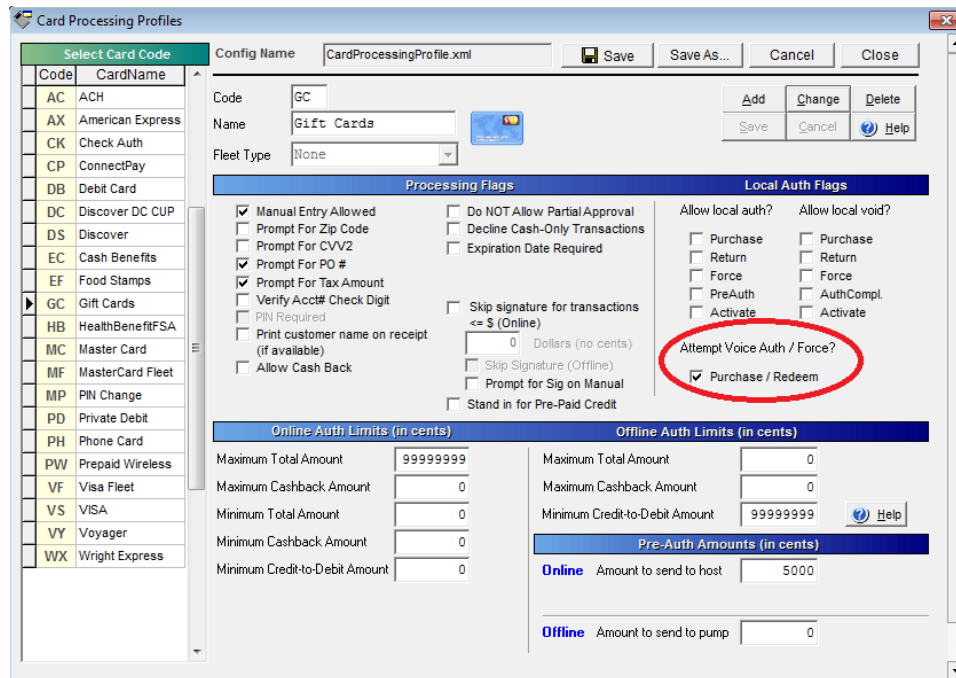
- AS – Soft Approval; Indicates that Telecheck has approved the transaction for ECC and requires signature confirmation before proceeding.
- NE – Soft Decline, request for additional information
- NG – Soft Decline, request for additional information

When the FLC host is defined, the FL2 host will automatically be defined as well. The FL2 host is not in use at this time, however. The FL2 host should have its primary IP address defined as 127.0.0.1, with a port defined as an open port on the local machine, such as 5110.

Voice Authorization Instead of Decline on Offline Purchase

Attempt Voice Auth / Force

A new option for Purchase / Redeem transactions has been added to the Card Process Profiles screen that will attempt perform a Voice Authorization for offline transactions, instead of declining. To use this option, the POS must support the NV Soft Decline response code.



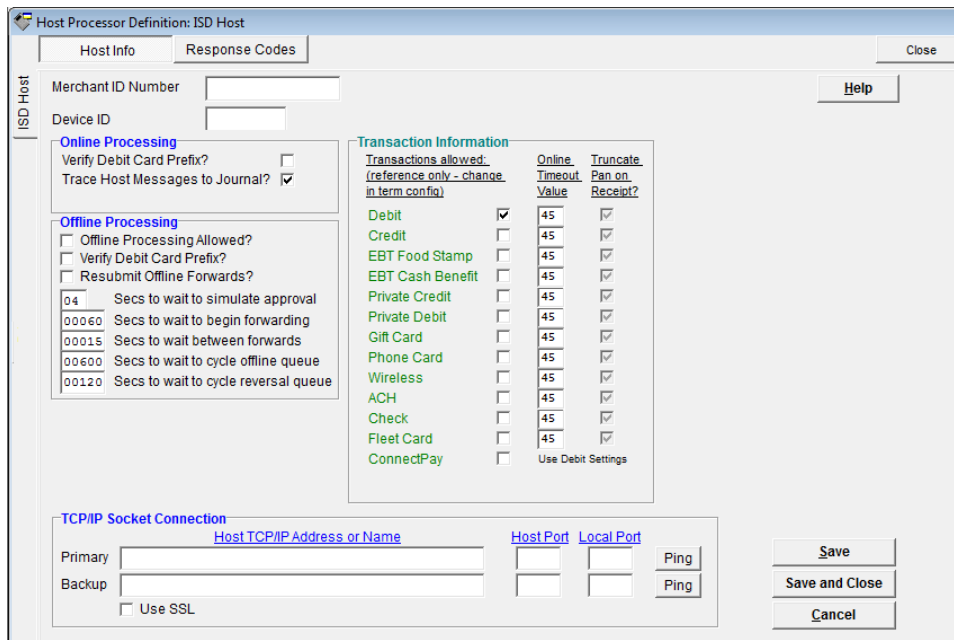
When the Attempt Voice Auth / Force option is selected for Purchase / Redeem, whenever a Purchase / Redeem transaction is attempted offline, instead of receiving a hard decline, WinEPS will provide an NV soft decline to the POS, which will prompt the cashier to attempt to perform a Voice Authorization. If a voice auth is performed, and an approval number is entered, the transaction is then stored for processing to the host at a later time as a pre-approved Force transaction.

Attempt Voice Auth / Force is available only for Purchase / Redeem transactions.

The Attempt Voice Auth / Force takes the place of standard offline processing where a dollar amount is specified for approval; if Attempt Voice Auth / Force is configured for Purchase / Redeem, the standard offline process will be disabled for Purchase / Redeem, and any amounts listed for Offline will be ignored for Purchase / Redeem transactions.

ISD Host

ISD Host Processor Definition Screen



ISD Host Info Screen

Enhancement	Description
Merchant Number	Supplied by host
Device ID	Supplied by host

Enhancement	Description
Online Processing	<p>Verify Debit Card Prefix?</p> <ul style="list-style-type: none"> ▪ Check this box to force verification of Debit prefixes against the WinEPS debit bin file <p>Trace Host Messages</p> <ul style="list-style-type: none"> ▪ Should always be checked; this provides additional information for troubleshooting.
Offline Processing	<p>Offline Processing allowed?</p> <ul style="list-style-type: none"> ▪ Indicates whether offline processing for this host is allowed. <p>Verify Debit Card Prefix?</p> <ul style="list-style-type: none"> ▪ Check this box to force verification of Debit prefixes against the WinEPS debit bin file <p>Resubmit Offline Forwards?</p> <ul style="list-style-type: none"> ▪ Check to save and resubmit offline forwards that were declined due to insufficient funds; attempts over the next several days to complete the offline transaction.
Primary Addr or Name	Supplied by host
Backup Addr or Name	Supplied by host
Buttons	Description
Help	Brings up this Help screen

Buttons	Description
Save	Saves configuration changes without closing screen.
Save and Close	Saves configuration changes and closes the screen.
Cancel	Closes screen without saving changes.

ISD Supported Transaction Types

	Purchase / GC Redeem	Purch w/ CB	Cash Back Only	Return	Force [Voice/ Voucher]	Return Voucher	Balance Inquiry	Activation	Deactivation	Recharge	PreAuth / Completion
ACH	X	X	X	X	X	NA	NA	NA	NA	NA	X
Check (Electronic Check Conversion)	X	X	X	NA	X	NA	NA	NA	NA	NA	NA
Check (Standard)	O	X	X	NA	X	NA	NA	NA	NA	NA	NA
Connect Pay	X	NA	NA	X	NA	NA	NA	NA	NA	NA	NA
Credit Card	B (V)	B (V)	B (V)	B (V)	X	NA	NA	NA	NA	NA	B
Debit	O	O	X	X	NA	NA	NA	NA	NA	NA	X
EBT – Cash	O	O	O	O	X	NA	O	NA	NA	NA	X
EBT – Food Stamp	O	NA	NA	O	O	NA	O	NA	NA	NA	NA
Fleet		NA	NA	X	X	NA	NA	NA	NA	NA	
Gift Card	O	NA	NA	O	X	NA	O	O	X	X	X
Phone Card	NA	NA	NA	NA	NA	NA	NA	X	X	X	NA
Private Credit	X	X	X	X	NA	NA	NA	NA	NA	NA	X
Private Debit	X	X	X	X	NA	NA	NA	NA	NA	NA	X
Wireless	NA	NA	NA	NA	NA	NA	NA	X	X	X	NA

Legend:	
O	– Online only
B	– Both On & Offline
B/Disc	– As B, with Discover Card only
(V)	– Transaction Can be Voided
(VO)	– Can be Voided Online Only
X	– Not Supported
NA	– Not Applicable to Transaction Type

ISD Additional Information

- The Following transaction types are supported:
 - Credit: purchase and return (includes FSA transactions). Pre-auth and completions for fuel purchase transactions.
 - Debit: purchase and purchase with cash back.
 - EBT Food Stamp: purchase, return, voucher and balance inquiry
 - EBT Cash: purchase, purchase with cash back, return, voucher and balance inquiry
 - Gift Card: (in-house) activate, redeem, return and balance inquiry
 - Blackhawk GC: activation
 - Checks: purchase with paper checks only
 - Fleet: Pre-auth and completions for fuel purchase transactions.
 - Only WEX fleet cards are supported and only accepted at the pumps.
 - Fuel is not yet complete due to need to implement on the ISD side.

- The ISD host supports a global BIN import process where the BIN information is provided in a DebitBIN.txt file that is placed into the EPS folder.

- During the EOD process WinEPS performs a total import on the provided DebitBIN.txt, clearing out any previous BIN data and updating to the latest information.

- There is no close of batch message; this implementation of the ISD host does not require one.

Do Not Retain Customer Name Option

New Option to Stop Retaining the Customer Name

A new option has been created that will prevent the recording of any customer name that is acquired from the Track2 data on a slid card, or any that is set to OpenEPS by the POS.

This option will not retroactively remove logged names from already existing OpenEPS jrnl files and WinEPS spool files; it only prevents logging after the option it enabled, and the settings are passed down to each lane.

In order to configure this option, follow the steps below:

- 1) Sign into WinEPS
- 2) Use the dropdown menus to navigate to Site Information | Processing Options

The screenshot shows the 'Processing Options' window with the following settings:

- System Operation:** Automatic Close (selected), Manual Close (unselected)
- Time for Automatic Operation:** EPS Cutover Time (hh:mm) 23:55
- Miscellaneous Settings:**
 - Operator Auto Log Off Time (min): 15
 - Password Expiration (days): 30
 - Number of days to keep report files: 66
 - Delete card holder sensitive data at EOD:
 - Remove offlines from Archive at EOD:
 - Do Not Retain Customer Name:**
 - Track Checker Totals for Reports:
 - Use Manager Passwords:
 - Write All Trouble Msgs To Event Log:
 - Write User Activity to Event Log:
- Duplicate Transaction Processing:**
 - Using PAN, Amt, Tran type:
 - Using PAN (Acct#) only:
 - No Duplicate Checking:
- Offline Blackhawk Receipt Verbiage:** Card will be Active within 24 Hours

- 3) Click the checkbox next to the option "Do Not Retain Customer Name" as shown above.
- 4) Click save to Save your setting.
- 5) Stop and Restart WinEPS to cause the setting to take effect.
- 6) Sign on all lanes in order to ensure that they download the new setting; until the lanes have downloaded the new setting they will not prevent the recording of the customer name.

Remove Offlines from Archive at EOD

Prevent retaining Offline data in archives for increased security

A new option has been added to allow the automated removal of pending offlines from archived Actlogs, in order to increase security.

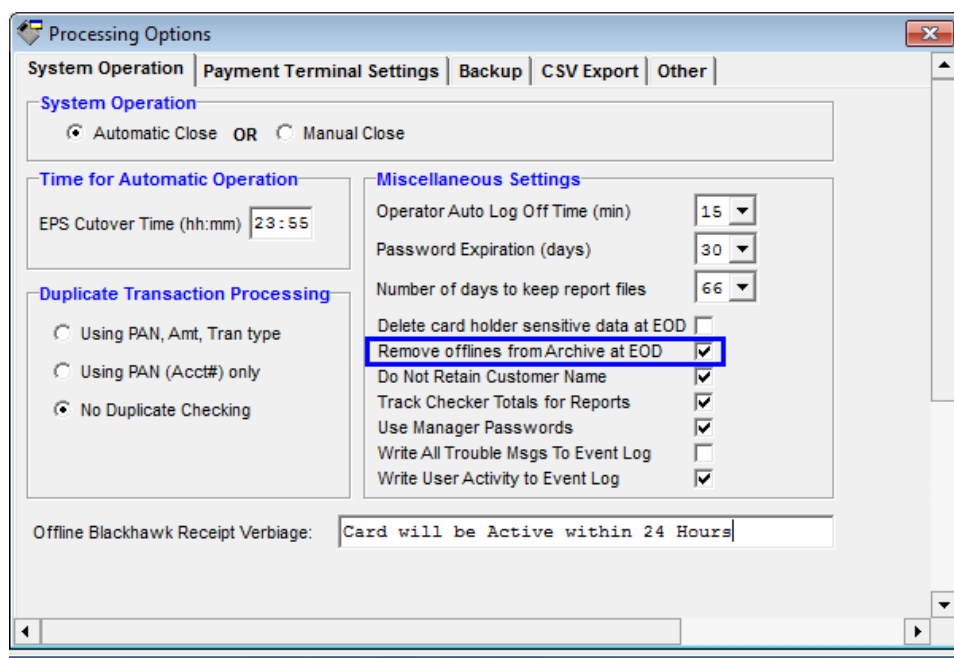
When checked, this option will automatically remove any card data associated with pending offlines from the archived zip file during the End of Day process.

Pending offlines will be rolled to the current day for processing; however because with this option turned on, they are removed from archived logs, in the event of an issue, there will be no backup archive of the stored offline transactions.

Users are advised to use this option with caution.

In order to configure this option, follow the steps below:

- 1) Sign into WinEPS
- 2) Use the dropdown menus to navigate to Site Information | Processing Options



Remove Offlines from Archive at EOD

- 3) Click the checkbox next to the option "Remove offlines from Archive at EOD" as shown above.
- 4) Click Save to Save your setting.
- 5) Stop and Restart WinEPS to cause the setting to take effect.