

# WinEPS Release Notes

---

WinEPS 828.0 SP1

May 2013

**Retalix**

Retail Future Ready™

Retalix, a division of  NCR

---

**Copyright © 2013 Retalix Ltd.**

**All rights reserved.**

**Israel**

10 Zarhin Street  
P.O. Box 2282  
Ra'anana 43000, Israel  
Tel.: +972 9 7766677  
Fax: +972 9 7400471  
Web site: <http://www.retalix.com>

**USA**

6100 Tennyson Parkway  
Suite 150, Plano, TX 75024 USA  
Tel.: +1 469 241 8400  
Web site: <http://www.retalix.com>

Retalix technical documentation and the product(s) described herein are protected by one or more U.S. copyrights, patents, foreign patents, or pending applications. No part of this publication may be reproduced or transmitted into any human or computer language in any form or by any means, stored in a retrieval system, transmitted, redistributed, translated or disclosed to third parties, or de-compiled in any way including, but not limited to, photocopy, photograph, electronic, mechanical, magnetic or manual without the expressed written permission of Retalix Ltd., or its licensors, if any. All copies, so authorized, shall contain a full copy of this copyright notice.

Retalix products are licensed products. The product licenses convey the right to use only those specific products, components, modules, features and/or functions specified in the license agreement or contract. This publication may mention or reference products, components, modules, features and/or functions that are not part of a particular license agreement. The customer is not entitled to the receipt of, or use of, any other products, components, modules, features and/or functions that may be referenced in any documentation provided to customer unless additional license fees are paid and an appropriate license agreement is duly executed. Retalix's obligations with respect to its products and services are governed solely by the agreements under which they are provided.

U.S. Government Users Restricted Rights: If the Customer is a United States Government entity, the Retalix products described herein are "commercial computer software" as defined by current Federal Acquisition Regulation ("FAR"), Department of Defense Federal Acquisition Regulation Supplement ("DFAR"), or other applicable Agency regulation provisions. If the Retalix products described herein are other than "commercial computer software," then the United States Government Customer shall receive no greater than Restricted Rights, as defined in the currently applicable version of the FAR, DFAR, or other applicable Agency regulation. In the event that alternative regulatory rights allocation provisions are available to the parties, the provision which provides the Customer with the narrowest rights allocation permitted by law and regulation shall apply. For Civilian Agencies: Restricted Rights. Use, reproduction or disclosure is subject to restrictions set forth in subparagraph (a) through (d) of the Commercial Computer Software Restricted Rights clause at 52.227-19, as applicable, and the limitations set forth in standard Retalix license agreements for software and technical documentation.

This publication is furnished for informational use only and should not be construed as a commitment by Retalix. The information could include technical inaccuracies or typographical errors. Every effort has been made to make this publication as complete and accurate as possible, but it is provided "as is" without warranty of any kind either expressed or implied, including, but not limited to, the implied warranties of merchantability, fitness for a particular purpose, or non-infringement. Retalix may make improvements and/or changes in the program(s), product(s), and/or applications described in this publication at any time without notice. Due to continuous development of Retalix Ltd. products, information published in this document may become obsolete.

Third-party products, services, or company names referenced in this document may be trademarked or copyrighted by their respective owners, and are for identification purposes only.

Copyrights, trademarks and license agreements shall be governed and construed in accordance with the laws of the State of Texas and the Federal Arbitration Act, and shall benefit Retalix, its successors, and assigns.

---

---

## Table of Contents

---

<b>Table of Contents .....</b>	<b>iii</b>
<b>Section 1 .....</b>	<b>4</b>
828.0 SP1 Information .....	4
Minimum System Requirements .....	4
PCI Compliance and Operating Systems .....	5
Code Versions.....	7
Known Issues .....	9
WinEPS Fixed Issues and Enhancements .....	16
OpenEPS Changes.....	27
OpenIP Changes.....	32
Term Handler Changes.....	32
Host Changes .....	33
Terminal Code Changes .....	49
Stand Beside Code Changes.....	54
External Program Changes.....	54
<b>Section 2 .....</b>	<b>59</b>
New Features.....	59
New FLC Check Host.....	59
ISD Host.....	63
Moneris Host .....	67
Voice Authorization Instead of Decline on Offline Purchase .....	71
Do Not Retain Customer Name Option.....	72
Alternate ID / Frequent Shopper on Language Selection Screen .....	73
<b>Contact Information .....</b>	<b>2</b>

## Section 1

---

### 828.0 SP1 Information

This section covers changes, bug fixes, and enhancements to the 828.0 SP1 release of WinEPS. The items listed below are the changes made only since the previous major release. Previous editions of the WinEPS Release Notes are located on the WinEPS installation CD, in the directory Documents/Old Release Notes, or contact WinEPS support for a copy.

#### Minimum System Requirements

- If the minimum requirements for the operating system you are using are higher than what is listed below, use those requirements instead.

#### Hardware Requirements for WinEPS and OpenEPS

- Pentium III (Intel or compatible) 500 MHz processor (1 GHz or faster recommended)
- 256 MB of RAM (512 MB or more recommended)
- VGA, or higher, resolution monitor set at 1024x768 or better
- CD-ROM drive for software installation
- Ethernet Card
- Drive Space Requirement for WinEPS server:
  - 600 MB of available hard disk space on the WinEPS server (1.5 Gb of drive space is recommended).
  - WinEPS requires approximately 300 Mb of space to install to; in addition a busy store can generate up to 10 Mb of log files per day. The default of 30 days storage can use up to 300 Mb of extra space resulting in the minimum requirement of 600 Mb of drive space.
    - 30 Days of log retention requires a total of 600 Mb free Hard Drive space.
    - 60 Days of log retention requires a total of 900 Mb free Hard Drive space.
    - 90 Days of log retention requires a total of 1.2 Gb free Hard Drive space.
- Drive Space Requirement for OpenEPS on each POS lane:
  - 100 Mb free drive space for configuration files and logs

#### WinEPS and OpenEPS User Account Requirements

The User-Updatable Encryption Keys utilize the Windows registry to store a key-part of the encryption key in use. This means that the user account under which WinEPS runs as well as the user account under which the POS system runs must have both read and write access to the registry.

If the user account does not have the appropriate rights, WinEPS will not be able to process transactions, and OpenEPS will provide an error to the POS and will likewise be unable to process transactions.

### Software Requirements for WinEPS

- TCP/IP Protocol
- Any of the following Operating Systems:
  - Windows 7, 32 or 64 bit
  - Microsoft Vista SP1
  - Windows Server 2008, 32 or 64 bit
  - Microsoft Windows XP SP2, Professional
  - Microsoft Server 2003 SP 1

Caution:

**WinEPS upgrades require a minimum starting version of 825.0.** If you have a currently installed version of WinEPS older than Version 825.0, it must first be upgraded to 825.0 using previously available upgrade installations. Instead of upgrading a version prior to 825.0, it is highly recommended to make a backup of your WinEPS, perform a new installation, and configure your new version from scratch

### Software Requirements for OpenEPS (Front POS Lanes):

- TCP/IP Protocol
- Any of the above Operating Systems, plus:
  - Windows XP Embedded
  - WePOS
  - Linux Red Hat version and Fedora

Under Windows Vista and above, non-administrative users may not stop or start services; the Stop and Start buttons in WinEPS will be grayed out if you are logged in to Windows on as a non-administrative Windows user.

### PCI Compliance and Operating Systems

PCI requires that the security patches for software in the payments environment be tested and installed in a timely fashion. Several Microsoft operating systems have past their supported security update lifespan, and no additional security patches will be released. These operating systems include Windows NT 4.0, Windows 95/98, and 2000.

Due to the vulnerability that a lack of security patches represents, these operating systems are no longer supported for use with the WinEPS/OpenEPS product suite. Only the operating systems listed under the [Software Requirements](#) section above are supported.

Refer to information at <http://support.microsoft.com/> for the most up to date security related articles and end of support dates for all Microsoft operating systems.

### Unsupported Systems

The following operating systems and hardware are not supported:

- Windows NT 4.0 is no longer supported (See PCI compliance section above)
- Windows Win95/Win98 is no longer supported (See PCI compliance section above)
- Microsoft Server 2000 is no longer supported (See PCI compliance section above)
- Microsoft Windows 2000 is no longer supported (See PCI compliance section above)
- WinEPS will not function on non NT-based Windows versions, such as Windows ME.
- XP Home version is **not** supported due to its limited scope.

## Code Versions

### WinEPS Versions:

Module	Version
EPSEngineSrv.Exe	828.0.1.234
EPSTMenu.Exe	828.0.1.251
Rpt.Exe	828.0.1.199

### OpenEPS Versions:

Module	Version	Date
mtx_eps.dll	828.0.1.372	5/10/2013
mtx_pos.dll	828.0.1.207	4/29/2013
libmtx_eps.so	828.0.11.9	11/7/2012
libmtx_pos.so	828.0.0.2	10/12/2012

### OpenIP Versions:

Module	Version
OpenIPSRV.exe	826.1.0.1
TermHandlerSTSSrv.exe	825.2.0.49

### Terminal Code Versions:

Terminal	Version	Additional Version Info	Date
eN-Crypt 2100	2.40		6/4/2008
eN-Touch 1000	06.06		1/20/2003
Everest	51		8/27/2010
HYP 4100	232		1/25/2007

Terminal	Version	Additional Version Info	Date
HYP 4150	425	FPE 5.P.115	8/19/2010
HYP L4250	425	FPE 5.P.115	8/19/2010
HYP L5300	Not Yet Available		
Mx830/850/870/880	231Q	RFS 18	12/7/2011
Mx860	231Q	RFS 18	12/7/2011
Mx760/OP 4100	221E		2/17/2011
Omni 7000	57		1/27/2011
VX670	20		2/28/2008

**Stand Beside Code Versions:**

Terminal	Version	Date
Verifone Omni 3750 (No longer PED Compliant)	51	7/5/2011
VX570 (Replaces the Omni 3750)	52	9/7/2011

## Known Issues

### Loading Screen Files on an MX terminal Prevents SmartWIC Functionality Until Reboot

An issue was discovered where loading an MX terminal with screen files would prevent SmartWIC from functioning properly. The solution to this issue is to reboot or power cycle the MX terminal after the load; once the terminal completes rebooting it will be able to process SmartWIC transactions normally.

### Upgrades only supported from WinEPS version 825.0 or higher

The current WinEPS install package only supports upgrades from previous versions of WinEPS 825.0 or higher. If you have a currently installed version of WinEPS older than version 825.0, it must first be upgraded to 825.0 using previously available upgrade installations. For this purpose, it is recommended to use the 826.0 installation package; the 826.0 install package supports upgrades from as old a version number as 815.3. Once an older system has been brought up to at least 825.0, the current installation package may be used to complete the upgrade to the latest version.

The 826.0 installation package can be found on the WinEPS installation CD.

If your WinEPS version is older than 815.3 it is highly recommended to make a backup of your WinEPS, perform a new installation, and configure your new version from scratch. If you do need to upgrade from a version prior to 815.3, contact MTX Support for assistance.

When performing an upgrade from the 825.0 version (only), TOR transactions will not be converted; it is therefore recommended that any location on the 825.0 version that is upgraded should begin the upgrade process only after a successful End of Day has processed to ensure there are no outstanding TOR reversals pending.

### WinEPS and POS Lane Windows Accounts Require Registry Access

The new User-Updatable Encryption Keys utilize the Windows registry to store a key-part of the encryption key in use. This means that the user account under which WinEPS runs as well as the user account under which the POS system runs must have both read and write access to the registry.

If the user account does not have the appropriate rights, WinEPS will not be able to process transactions, and OpenEPS will provide an error to the POS and will likewise be unable to process transactions.

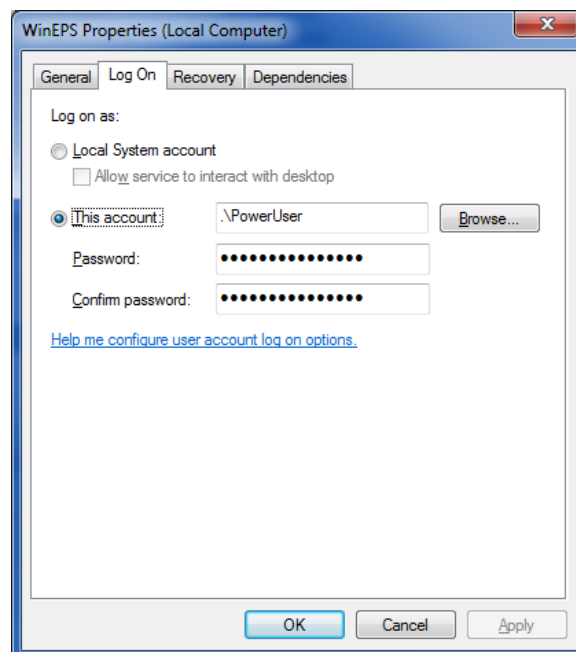
WinEPS installations using the Redundancy Service should note that the Redundancy Service also requires registry access on both the Primary and Backup WinEPS server in order to successfully transfer the key data during a synch. The user account that RS runs under should also have access to the Windows Registry.

**WinEPS will not run under “Local System Account”**

Due to the necessity of consistent read and write access to the Windows Registry, as well as limiting account scope to satisfy PCI requirements, WinEPS will not run if the WinEPS service is configured to use a Local System Account.

**If the WinEPS Service is configured to use Local System Account, the WinEPS service will abort start up, and will shut down processing.**

The account provided to run the Service should be specific pre-defined account used only to run the WinEPS and RS services.



In order to prevent accidental selection of the Local System Account option, the WinEPS Service Installation process will ONLY provide the option to enter specific account information. If you are upgrading from a previous version and have a Local System Account defined, then as part of the upgrade, the installation will prompt for the entry of new account information.

**Verifone Vx570 Stand Beside, High Memory Terminal Only**

Due to enhancements to the Vx570 code version 50, WinEPS now supports only the high memory version of the Vx570 terminal.

High memory terminals contain at least 12 MB of memory.

**Latest Mercury Host DSI**

The latest Mercury Host DSI version 2.50.3851 is required for processing with 826.1 SP1 or later. If you do not have the latest DSI, it can be found on the WinEPS release CD, in the /Tools/ Mercury Host DSI Installer/ directory.

**Debit Balances Not Printed on Receipts**

Some hosts incorrectly return a balance file for debit transactions linked to customer accounts. For all debit transactions, balances will not be printed on the receipt.

**Hypercom Terminal Issues**

The previous USB driver was reported to have issues in the field; however, when using the latest version of the USB driver provided by Hypercom, Hypercom terminals using the non-powered version of the USB cable lose connection at points during the transaction processing. As such MTXEPS is not releasing the latest driver USB driver with the 826.1 WinEPS release.

No updated USB driver is available from Hypercom that corrects both of the above issues as yet. For locations experiencing issues with their current USB driver, you may wish to contact Hypercom to receive their latest version, providing the terminal is not using the non-powered USB. Locations using non-powered USB are recommended to continue using the older driver.

**Hypercom 4100 Terminal Code**

The Hypercom 4100 terminal continues to be released with the most recent version of code that functions for all versions of the 4100, which is version 232. The most recent version of the Hypercom code is version 425; however, due to differences in the Hypercom 4100 units themselves, this code version will not load on all models.

For the 425 code version to load successfully, the Hypercom 4100 unit must be the high-memory version. This code will not function on the low memory version, and attempting to load it on the low memory version could damage the terminal. To determine if you have the high or low memory version of the 4100, contact your terminal vendor.

The 4100 terminal will not be able to take advantage of the new features for entry of PAN or CCV2 at the terminal without the latest 425 code version.

If you determine that your 4100 is the high memory version and would like to acquire the latest terminal code for it, contact MTXEPS Support.

**WinEPS requires Verifone Omni 3750 code version 50 or higher**

Locations using the older Omni 3750 terminal (not the VX570) must upgrade their 3750 terminals to code version 50 or later prior to upgrading to WinEPS version 827.0.

To upgrade the terminal code, take the latest code from the 827.0 install CD ([CD Drive]:\OpenEPS\SCAT Code\Vx570 & Onmi 3750 Verifone IP Stand Beside\OMNI 3750 Stand Beside), OMNI 3750 Term Code.zip and place it into the C:\Program Files\MicroTrax\EPS\config\terminalcode folder. Verify that your lane configuration for the 3750 has that file selected for its terminal code [OpenEPS Lanes button | select terminal config | Pin Pad Configuration tab, Terminal code File selection box]. Once the terminal code has been configured, stop and restart WinEPS, then sign on with the terminal to allow automatic upgrade.

After upgrade of the 3750 completes, you may proceed with upgrading WinEPS to 827.

**Linux and SOAP**

OpenEPS now uses SOAP instead of FTP to transfer files; in full installations of Linux, the proper libraries are already present to support SOAP functionality; however, some POS systems use reduced capacity Linux loads that may not have all the required library files.

In order to install the potentially missing libraries, go to the \OpenEPS\Linux OpenEPS\ directory on the WinEPS installation CD. Extract the extra.soap.so.tgz file to the /usr/lib/ directory. Use the change mode command (chmod 777) to set the attributes.

You must also update the locale (/etc/sysconfig/i18n) with the following information:

- LANG="en-US.utf8"
- SUPPORTED="en\_US.utf8:en\_US:en"
- SYSFONT="lat0-sun16"
- SYSFONTACM="iso01"

**SOAP Requires Exclusion to DEP**

Windows Server 2008, Windows 7 and Windows XP all contain a security feature called Data Execution Prevention. In Windows Server 2008 and Windows 7, the Windows Data Execution Prevention is defaulted to on for all programs; in Windows XP it can be manually configured.

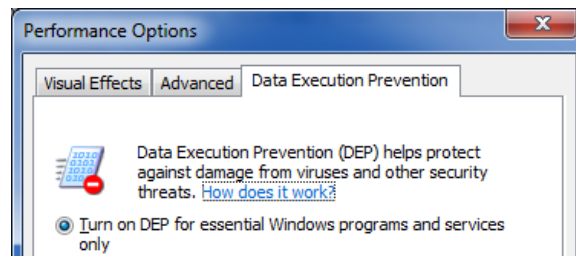
The update to the use of SOAP for file transfer requires that computer systems running any component that requires the use of SOAP have that component excluded from DEP, if DEP is running.

For WinEPS servers, this means excluding the WinEPS engine executable from DEP; for OpenEPS POS lanes, the POS executable that loads OpenEPS must be excluded and if running Virtual Terminal, the

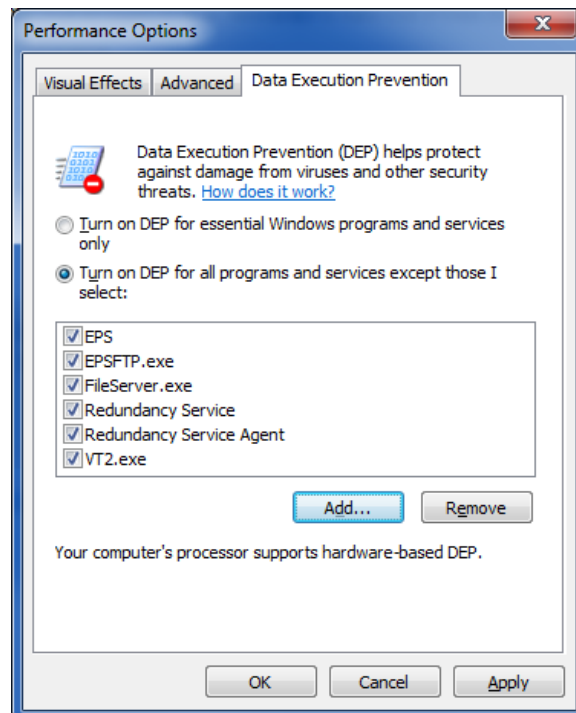
Virtual Terminal executable must be excluded. Finally, if using Redundancy, the redundancy executables must be excluded.

To modify the DEP settings use the following instructions:

1. On Windows 7/Server 2008, Go to start/windows logo, right click Computer and select Properties. On Windows XP, Right click My Computer, choose Properties.
2. On Windows 7/Server 2008, Click on Advanced system setting on the left side of the screen under Control Panel Home.
3. Go to the Advanced tab and click the Settings button under Performance, then select the Data Execution Prevention tab.
4. If the DEP is set to the first radio button, where it is turned on only for Windows programs and services, you do not need to make any changes.



5. If it turned on for all programs and servers as shown below, click the Add button.



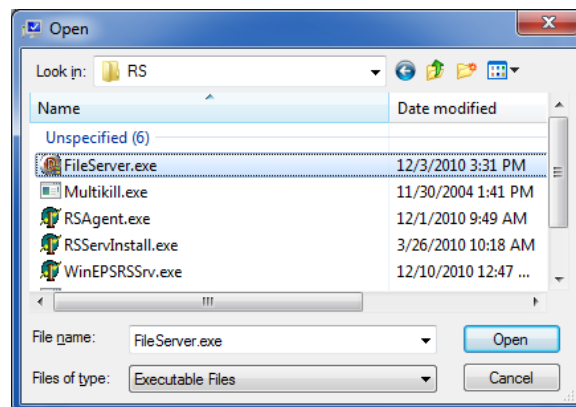
6. Use the opened selection box to select the executables that require exclusion from DEP. The following list details all MTXEPS files that require exclusion:

- WinEPS
  - EpsEngineSrv.exe
- OpenEPS
  - VT2.exe
  - POS Executable [The executable that loads the OpenEPS mtx\_pos.dll file]
- Redundancy Service:
  - WinEPSRSSrv.exe
  - FileServer.exe
  - RSAgent.exe

All of the above file use SOAP to communicate and to download files.

**7.** Add all the relevant executables to the exclusion list.

- The WinEPS executables are located by default in the C:\Program Files\MicroTrax\EPS folder.
- The OpenEPS executables are located by default in the C:\Program Files\MicroTrax\OpenEPS folder.
- RS executables are located by default in the C:\Program Files\MicroTrax\RS folder.

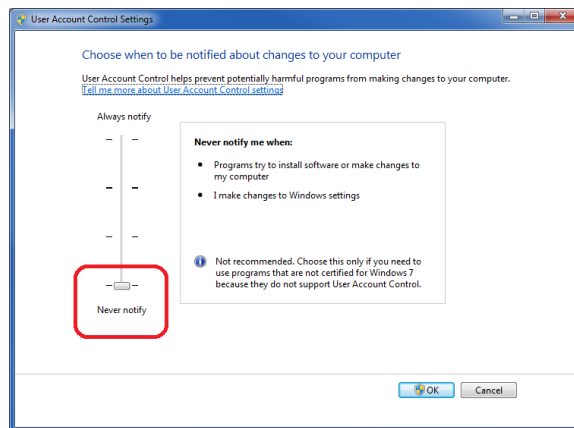


**8.** Browse to the appropriate directory and select the executable, then click Open and the executable will appear in the DEP exception list. Do the same for all the executables to be added on the current PC. The PC may not have all three applications loaded (WinEPS, OpenEPS and RS), so add the executable from the applications that are loaded.

**9.** Restart the PC for the changes to take effect.

### User Account Control (UAC) Must be Disabled

When using WinEPS or OpenEPS on any of the Microsoft Operating Systems that utilize User Account Control (Windows Vista, Windows Server 2008, Windows 7) the system must be set to the "Never Notify" level.



Failure to set the User Account Control properly can result in a failure to process transactions, as the UAC can prevent WinEPS from properly accessing the Windows Registry.

### Windows 7 Requires Administrative User Account

The user account that WinEPS & Redundancy Service runs under is typically recommended to be a Power User account, however in Windows 7, the Power User group and account type have been deprecated and no longer have the elevated access required to run the WinEPS software suite. As such, when installing WinEPS or RS on a Windows 7 OS, the account used must be a Windows administrator account.

## WinEPS Fixed Issues and Enhancements

Enhancement	Version	Description
1. Return Message Masking	828.0	<ul style="list-style-type: none"> <li>▪ Fixed</li> <li>▪ Corrected logging issue with returned host message.</li> </ul>
2. DataEntry activating MSR when not required	828.0	<ul style="list-style-type: none"> <li>▪ Fixed</li> <li>▪ Corrected an issue with the DataEntry function activating the MSR during entry calls that did not require the card reader.</li> </ul>
3. Updated Engine to remove unused record field	828.0	<ul style="list-style-type: none"> <li>▪ Enhancement</li> <li>▪ Removed the use of an unneeded field from transaction files.</li> </ul>
4. Remove Fleet/EMV decline 245 and 232 from Info Messages	828.0	<ul style="list-style-type: none"> <li>▪ Enhancement</li> <li>▪ Fleet and EMV require multiple messages to flow through the WinEPS system, including requests for additional information. To improve clarity, these supplemental messages that do not indicate an actual approval or decline of a transaction have been removed from the WinEPS Info Messages display.</li> <li>▪ Fleet, removed 232 Fleet Data Required.</li> <li>▪ EMV, removed 245 Needs MACing.</li> </ul>
5. Issue Displaying Time/Date Stamps when Windows Format is Changed	828.0	<ul style="list-style-type: none"> <li>▪ Fixed</li> <li>▪ Corrected an issue where the changing the Windows date format from English United States date format 12/12/2012 to 12-12-2012 caused WinEPS to be unable to display the date and time properly in the WinEPS GUI.</li> </ul>

Enhancement	Version	Description
<p><b>6.</b> Alternate ID / Frequent Shopper Prompting on Language TAC</p>	828.0	<ul style="list-style-type: none"> <li>▪ Enhancement</li> <li>▪ The Alternate ID / Frequent Shopper entry now has the option of being placed on the same screen that Language Selection is on.</li> <li>▪ This combined screen is available only for use with the MX terminals and requires the use of specialized terminal code. Contact your account manager for the full information on how to implement this option.</li> <li>▪ <a href="#">Full details on this are included in Section 2.</a></li> </ul>
<p><b>7.</b> Settlement message offline forward not properly deleting after forward approved</p>	828.0	<ul style="list-style-type: none"> <li>▪ Fixed</li> <li>▪ In the event that a settlement was taken offline and subsequently forwarded successfully, the settlement was not being properly marked as completed; this has been corrected.</li> <li>▪ Corrected a related issue where all offline settlements were incorrectly treated as incomplete and moved to the new day's actlog for re-processing.</li> </ul>
<p><b>8.</b></p>		<ul style="list-style-type: none"> <li>▪</li> </ul>
<p><b>9.</b> Engine Fails to Start with certain Regional Formats set</p>	828.0	<ul style="list-style-type: none"> <li>▪ Fixed</li> <li>▪ Using certain Regional language settings would not allow the engine to start properly and produce a related pop up error. The engine has been updated to correctly respond to different formats.</li> </ul>
<p><b>10.</b> Update Installation License Text</p>	828.0	<ul style="list-style-type: none"> <li>▪ Enhancement</li> <li>▪ Updated the Licensing installation text to comply with the new Retailix license format.</li> <li>▪ Users are encouraged to read the new license text.</li> </ul>

Enhancement	Version	Description
<b>11.</b> WinEPS writing Close.eft file to the System32 folder	828.0	<ul style="list-style-type: none"> <li>▪ Fixed</li> <li>▪ During the startup process the Close.eft file was being incorrectly written to the System32 folder due to the file creation occurring before the WinEPS file location path was initialized. This has been corrected so that the Close.eft file will be correctly written to the EPS folder.</li> </ul>
<b>12.</b> Visa Fleet Prefixes missing digit	828.0	<ul style="list-style-type: none"> <li>▪ Fixed</li> <li>▪ Upon upgrade, the Prefix file will be updated to expand all Visa Fleet card prefixes to 10 digits in length, from the 9 digits they were incorrectly set to.</li> </ul>
<b>13.</b> Windows system date format affects security logic	828.0	<ul style="list-style-type: none"> <li>▪ Fixed</li> <li>▪ Corrected an issue where the date/time/language/region settings in Windows would affect the determination of whether the encryption key was expired. All region setting formats are now accepted and handed properly.</li> </ul>
<b>14.</b> Correct ZIP file process failure	828.0	<ul style="list-style-type: none"> <li>▪ Fixed</li> <li>▪ Corrected an issue where a large number of lane journal files uploaded to WinEPS at the same time would cause zip archiving failures. Archiving is now handed in series by creating a queue of log file to zip.</li> </ul>
<b>15.</b> WinEPS SOAP download fail after EOD	828.0	<ul style="list-style-type: none"> <li>▪ Fixed</li> <li>▪ Corrected an issue where file download would fail after WinEPS performed an End of Day.</li> </ul>
<b>16.</b> Status info listed in the log	828.0	<ul style="list-style-type: none"> <li>▪ Fixed</li> <li>▪ Corrected the formatting of the status message in the WinEPS Log file, and limited the size of the string printed.</li> </ul>

Enhancement	Version	Description
<b>17.</b> Improve handling of potential bad security value in registry	828.0	<ul style="list-style-type: none"> <li>▪ Enhancement</li> <li>▪ During the End of Day process, WinEPS will verify the current encryption against the stored value; if different WinEPS will automatically generate a new key and re-encrypt all encrypted transaction files with the new key.</li> </ul>
<b>18.</b> Failure to load Process.XML causes WinEPS to never cut over	828.0	<ul style="list-style-type: none"> <li>▪ Fixed</li> <li>▪ Corrected an issue where if WinEPS failed to successfully load the Process.XML, WinEPS would then never perform an EOD.</li> </ul>
<b>19.</b> Log IP and Port	828.0	<ul style="list-style-type: none"> <li>▪ Enhancement</li> <li>▪ Improved logging to include the IP address and port for all communications.</li> </ul>
<b>20.</b> Add 556X to Credit Prefix as MC	828.0	<ul style="list-style-type: none"> <li>▪ Enhancement</li> <li>▪ On an upgrade or new install the credit card prefix of 556XXXXXXX will be added to the Prefix table as a Mastercard.</li> </ul>
<b>21.</b> Remove RS exclusive GetConfigValues logging from WinEPS	828.0	<ul style="list-style-type: none"> <li>▪ Fixed</li> <li>▪ Removed “GetConfigValues” logging from WinEPS that applied only to RS and was included incorrectly through common code.</li> </ul>
<b>22.</b> ID Tech, Limited Environment Support	828.0	<ul style="list-style-type: none"> <li>▪ Enhancement</li> <li>▪ Added support for the ID Tech Magnetic Stripe Reader within a limited environment.</li> </ul>
<b>23.</b> Zip Code entry prompting supported for Fuel	828.0	<ul style="list-style-type: none"> <li>▪ Enhancement</li> <li>▪ Zip code prompting for Fuel is now supported in the Fuel interface. WinEPS will require a PreAuth to include Zip Code and will prompt the Fuel Server for the Zip Code entry, if Zip Code is turned on in the Card Processing Profile for the payment card type in use.</li> </ul>

Enhancement	Version	Description
<b>24.</b> When updating security, only update Actlog01.eft	828.0	<ul style="list-style-type: none"> <li>▪ Enhancement</li> <li>▪ Modified the update routine so that when the security is updated, only the primary actlog in the EPS folder is updated; this prevents extraneous actlogs that might reside in the EPS folder from being modified.</li> </ul>
<b>25.</b> Zip Process Enhancement	828.0	<ul style="list-style-type: none"> <li>▪ Enhancement</li> <li>▪ Prior to beginning the file zipping process for archiving, WinEPS will verify that the Archive folder is present; if it is not, the folder will be created.</li> <li>▪ Additionally, if the zip process itself fails, this will now be noted in the log file, and the jrnl file that was to be zipped will now be moved directly to the Archive folder for storage instead of just deleted.</li> </ul>
<b>26.</b> Silent Install upgrade from Local System to Specific user account	828.0	<ul style="list-style-type: none"> <li>▪ Enhancement</li> <li>▪ The upgrade process has been enhanced to update the account under which WinEPS is running to use the credentials supplied during the installation. The installation will abort if no new credentials are supplied and WinEPS was previously running under the Local System Account.</li> </ul>
<b>27.</b> WinEPS will now shut down if the registry is not accessible	828.0	<ul style="list-style-type: none"> <li>▪ Enhancement</li> <li>▪ To prevent the possibility of incorrect file handling due to missing registry security information, in the event that WinEPS cannot read/write to the Windows registry, the WinEPS service will shut down, with a warning message listed on the WinEPS Menu.</li> </ul>
<b>28.</b> Update Installation License Text	828.0	<ul style="list-style-type: none"> <li>▪ Enhancement</li> <li>▪ Updated the Licensing installation text to comply with the new Retalix license format.</li> <li>▪ Users are encouraged to read the new license text during installation.</li> </ul>

Enhancement	Version	Description
<b>29.</b> Local System Account not supported	828.0	<ul style="list-style-type: none"> <li>▪ Update</li> <li>▪ Due to the necessity of consistent read and write access to the Windows Registry, as well as limiting account scope to satisfy PCI requirements, WinEPS will not run if the WinEPS service is configured to use a Local System Account.</li> <li>▪ <b>If the WinEPS Service is configured to use Local System Account, the WinEPS service will abort start up, and will shut down processing.</b></li> <li>▪ Upgrade and installation packages have been updated to prompt the user for new account information in the event that the service was previously installed, and found to be using a "Local System Account".</li> </ul> <p>See the <a href="#">Known Issues</a> section for additional information.</p>
<b>30.</b> Report group update failure	828.0	<ul style="list-style-type: none"> <li>▪ Fixed</li> <li>▪ Corrected an issue where attempting to add a new card type to the reporting groups would cause an I/O 32 error and saving the new settings would fail.</li> </ul>
<b>31.</b> Password Reset not working	828.0	<ul style="list-style-type: none"> <li>▪ Fixed</li> <li>▪ Fixed an issue where password reset was not working.</li> </ul>
<b>32.</b> TOR created without correct transaction type	828.0	<ul style="list-style-type: none"> <li>▪ Fixed</li> <li>▪ Corrected an issue where, if WinEPS shut down once a transaction was in flight, the TOR for that message did not have the correct Message Type.</li> </ul>
<b>33.</b> Updated settings to prevent SSL/TLS renegotiation attack	828.0	<ul style="list-style-type: none"> <li>▪ Enhancement</li> <li>▪ WinEPS, OpenEPS and its host modules that use SSL/TLS have been updated to prevent renegotiation attacks.</li> </ul>

Enhancement	Version	Description
<b>34.</b> Remove padding from fields written to configuration XMLs	828.0	<ul style="list-style-type: none"> <li>▪ Enhancement</li> <li>▪ When saving XML configuration files, the Menu will no longer add extra padding spaces to them, and the engine will responsible for using appropriate blanks when needed</li> </ul>
<b>35.</b> Update Locking Wic Card Customer Display text	828.0	<ul style="list-style-type: none"> <li>▪ Update</li> <li>▪ The previous text for locking WIC cards was "Please do not Remove Card"; on an upgrade or fresh install this text will be updated to "Card Error Return to Clinic".</li> </ul>
<b>36.</b> Failed XML load after EOD	828.0	<ul style="list-style-type: none"> <li>▪ Fixed</li> <li>▪ Corrected an issue where the Lanes.XML failed to load after an End of Day.</li> </ul>
<b>37.</b> Failed write to Actlog no longer processed to host	828.0	<ul style="list-style-type: none"> <li>▪ Fixed</li> <li>▪ Corrected an error where, if a transaction message sent to WinEPS could not be properly recorded in the Actlog, WinEPS would incorrectly still attempt to send the message to the host. This has been corrected so that the message is not sent to the host, and instead WinEPS will immediately shut down.</li> </ul>
<b>38.</b> Failure to match TOR Seq# provided bad response	828.0	<ul style="list-style-type: none"> <li>▪ Fixed</li> <li>▪ Corrected an issue where, if a TOR was sent in to WinEPS from a lane, and WinEPS did not receive the initial transaction, there would be errors on the reply message back to OpenEPS.</li> </ul>
<b>39.</b> Offline removal option	828.0	<ul style="list-style-type: none"> <li>▪ Enhancement</li> <li>▪ A new option has been added to allow the automated removal of pending offlines from archived Actlogs, in order to increase security.</li> <li>▪ Pending offlines will be rolled to the current day for processing; however because with this option turned on, they are removed from archived logs, in the event of an issue, there will be no backup archive of the stored offline transactions. Users are advised to use this option with caution.</li> </ul>

Enhancement	Version	Description
<b>40.</b> Acct # is showing null characters	828.0 SP1	<ul style="list-style-type: none"> <li>▪ Fixed</li> <li>▪ Fixed issue where Declined transactions had null values displayed in the account number field on the Information Messages screen.</li> </ul>
<b>41.</b> Journal Archive Missing Appended Date	828.0 SP1	<ul style="list-style-type: none"> <li>▪ Fixed</li> <li>▪ Resolved an issue where some archived journals were created missing the appended date.</li> </ul>
<b>42.</b> Combine Cash back YES/No	828.0 SP1	<ul style="list-style-type: none"> <li>▪ Enhancement</li> <li>▪ Prompts for Cashback Yes/No, and the dollar amounts for cashback are now optionally available on a single screen.</li> <li>▪ This new option has been added to the j – "" TAC.</li> </ul>
<b>43.</b> Remove "Button Title" from Q TAC Digital ID screen	828.0 SP1	<ul style="list-style-type: none"> <li>▪ Fixed</li> <li>▪ On the menu configuration screen for the Q – Select Language TAC, Frequent Shopper selection, the unused option for the "Button Title" entry box and related text has been removed.</li> <li>▪ Added a check mark next to the Frequent Shopper selection to indicate it has been turned on.</li> </ul>
<b>44.</b> PreAuth/Auth Completion Log Report displaying all transactions	828.0 SP1	<ul style="list-style-type: none"> <li>▪ Fixed</li> <li>▪ Corrected an issue where the Pre-Authorization and Completion Report was incorrectly including all transactions and an incorrect net amount. This has been corrected so that the report displays only Pre-Authorization and Completion transactions and the correct sum amounts at the bottom.</li> </ul>
<b>45.</b> Access violations in Engine	828.0 SP1	<ul style="list-style-type: none"> <li>▪ Fixed</li> <li>▪ Fixed issue with Access Violations resulting from client disconnections.</li> </ul>

Enhancement	Version	Description
<b>46.</b> Installer package design	828.0 SP1	<ul style="list-style-type: none"> <li>▪ Enhancement</li> <li>▪ The new installation will place a version marker in the Windows registry, at the following location:</li> <li>▪ HKEY_LOCAL_MACHINE\SOFTWARE[\Wow6432Node]\MTXEPS\WinEPS 828.0 SP1</li> </ul>
<b>47.</b> Support Centralized Logging	828.0 SP1	<ul style="list-style-type: none"> <li>▪ Enhancement</li> <li>▪ PCI Centralized Logging support has been added to WinEPS.</li> <li>▪ WinEPS now writes all PCI required User Access Logging to the Windows Event Log. This enables users to pull those logs and to transfer them to a central log server.</li> <li>▪ Full Setup Details are listed in the latest WinEPS Users PCI Recommendations Guide.</li> </ul>
<b>48.</b> After a KEK update Offlines could be replicated after each stop/start or EOD	828.0 SP1	<ul style="list-style-type: none"> <li>▪ Fixed</li> <li>▪ Corrected an issue where previously processed offlines would regenerate after an encryption key change.</li> </ul>
<b>49.</b> Access Violation in EPSMENU when selecting buttons on MX830 in Pinpad screen of terminal config	828.0 SP1	<ul style="list-style-type: none"> <li>▪ Fixed</li> <li>▪ Fixed issue that caused Access Violations when selecting MX830 buttons within the Terminal Configuration menu screen.</li> </ul>
<b>50.</b> WinEPS UAL Logging to Event Logs	828.0 SP1	<ul style="list-style-type: none"> <li>▪ Fixed</li> <li>▪ Revised User Access Logging to comply with the latest PCI requirements.</li> </ul>
<b>51.</b> Offlines removed from Archives at EOD	828.0 SP1	<ul style="list-style-type: none"> <li>▪ Enhancement</li> <li>▪ The option to remove offlines from the actlog during the EOD process has been upgraded to a permanent enhancement. This option is now always on and the End of Day process will now always remove offlines from the archived actlog as part of the EOD process.</li> </ul>

Enhancement	Version	Description
<b>52.</b> UAL logging of creation / deletion of any cardholder data files	828.0 SP1	<ul style="list-style-type: none"> <li>Enhancement</li> <li>To fulfill PCI requirements, WinEPS now provides additional logging whenever the creation or deletion of a file that can contain card holder data occurs. This includes files such as Offline, tor, and lanemsg files.</li> </ul>
<b>53.</b> Rights to view CC data logged when report module is launched	828.0 SP1	<ul style="list-style-type: none"> <li>Enhancement</li> <li>UAL logging has been enhanced to note the level of rights a user has when launching the report module; specifically whether the user has the right to view credit card numbers or not.</li> </ul>
<b>54.</b> New CPP entries default to MinimalActivationReceipt = N	828.0 SP1	<ul style="list-style-type: none"> <li>Fixed</li> <li>The MinimalActivationReceipt option is not used in WinEPS and thus the default for the option has been set to 'off'.</li> </ul>
<b>55.</b> A/V and crash after encryption key update with Preauth	828.0 SP1	<ul style="list-style-type: none"> <li>Fixed</li> <li>Fixed issues where pending Pre-Auth transactions would cause the encryption update to fail and crash the engine on subsequent EODs.</li> </ul>
<b>56.</b> 810 message doesn't make it back to the lane	828.0 SP1	<ul style="list-style-type: none"> <li>Fixed</li> <li>Corrected an issue where the 810 sign on response would not make it back to the OpenEPS lane to confirm the Sign On.</li> </ul>
<b>57.</b> Actlog deleted during CSV export of actlog outside of EPS directory	828.0 SP1	<ul style="list-style-type: none"> <li>Fixed</li> <li>Corrected an issue where the actlog was deleted when trying to export from a RS Archive.</li> </ul>
<b>58.</b> Enhance WinEPS install logging to include list of files installed	828.0 SP1	<ul style="list-style-type: none"> <li>Enhancement</li> <li>The installation process has been enhanced to log all the files that are included in the installation. The logging is written to the standard C:\MTXInstLog.txt log file.</li> </ul>
<b>59.</b> Remove Encrypted CSV	828.0 SP1	<ul style="list-style-type: none"> <li>Enhancement</li> <li>The Encrypted CSV Export option is no longer available due to PCI requirements.</li> </ul>

Enhancement	Version	Description
<b>60.</b> FTP settings default to off	828.0 SP1	<ul style="list-style-type: none"><li>▪ Enhancement</li><li>▪ The FTP transfer option used to upgrade from older WinEPS versions is now defaulted to OFF. In the event that an upgrade from a very old version of WinEPS is required (older than 826.0), users will have to manually turn FTP on for the period of the upgrade.</li></ul>
<b>61.</b> AV on Save Button	828.0 SP1	<ul style="list-style-type: none"><li>▪ Fixed</li><li>▪ Corrected an issue where clicking the save button multiple times in the WinEPS menu would generate Access Violations.</li></ul>

## OpenEPS Changes

Enhancement	Version	Description
1. Corrected communication issue	828.0	<ul style="list-style-type: none"> <li>▪ Fixed</li> <li>▪ Corrected an issue where expired certificates prevented communication between WinEPS and OpenEPS.</li> </ul>
2. Remove ServerEPS log lines from journal file	828.0	<ul style="list-style-type: none"> <li>▪ Fixed</li> <li>▪ Removed unneeded log lines from OpenEPS related to ServerEPS.</li> </ul>
3. OpenEPS increased resource use	828.0	<ul style="list-style-type: none"> <li>▪ Fixed</li> <li>▪ Fixed an issue where OpenEPS would use an excessive amount of CUP resources from not being properly killed after Checker Sign Off.</li> </ul>
4. Limit Cipher Suites in OpenEPS	828.0	<ul style="list-style-type: none"> <li>▪ Enhancement</li> <li>▪ OpenEPS has been limited to using the same high-security Cipher Suites that WinEPS uses</li> </ul>
5. New Option to prevent Customer Name from being logged	828.0	<ul style="list-style-type: none"> <li>▪ Enhancement</li> <li>▪ Added option that can remove the customer name from all logging by masking the customer name fields in OpenEPS and no longer sending the customer name up to WinEPS.</li> <li>▪ This option will not retroactively remove logged names from already existing OpenEPS jrnl files and WinEPS spool files; it only prevents logging after the option it enabled, and the settings are passed down to each lane.</li> <li>▪ <a href="#">Full details on this are included in Section 2.</a></li> </ul>
6. Remove loading unnecessary XML files	828.0	<ul style="list-style-type: none"> <li>▪ Enhancement</li> <li>▪ The POS DLL has been updated to no longer load configuration XML files that it does not use.</li> </ul>

Enhancement	Version	Description
<b>7.</b> No Customer Display while Processing 'b' Verify Card TAC	828.0	<ul style="list-style-type: none"> <li>▪ Fixed</li> <li>▪ Corrected an issue where the Customer Display was not being provided when processing the 'b' Verify Card TAC.</li> </ul>
<b>8.</b> Refine SOAP download so that it only tries FVersion files twice	828.0	<ul style="list-style-type: none"> <li>▪ Enhancement</li> <li>▪ The SOAP file download has been updated to retry a failed download of a file to OpenEPS only twice. This will prevent exceptionally log delays in downloading unavailable files.</li> </ul>
<b>9.</b> Transaction incorrect Date/Time due to status message	828.0	<ul style="list-style-type: none"> <li>▪ Fixed</li> <li>▪ Corrected an issue where OpenEPS was setting the incorrect transaction date and time on transaction messages due to the status message not clearing its own time/date values from memory.</li> </ul>
<b>10.</b> Set WIC card removed	828.0	<ul style="list-style-type: none"> <li>▪ Fixed</li> <li>▪ When the terminal is queried for status by OpenEPS, if the terminal responds that the card has been removed, set the Card Removed flag.</li> </ul>
<b>11.</b> Check Auth Receipts	828.0	<ul style="list-style-type: none"> <li>▪ Fixed</li> <li>▪ Corrected an issue where the receipt information would incorrectly buffered and provided in the next transaction.</li> </ul>
<b>12.</b> Canceling on PinPad loses Void info	828.0	<ul style="list-style-type: none"> <li>▪ Fixed</li> <li>▪ Corrected an issue where if the customer pressed Cancel on the PIN pad during a void, some void information would be cleared, resulting in a declined void.</li> </ul>
<b>13.</b> EBT food purchase received a Transaction Failed while offline	828.0 SP1	<ul style="list-style-type: none"> <li>▪ Fixed</li> <li>▪ Corrected an issue where EBT food purchases were receiving "Transaction Failed" message when voiding an EBT food purchase when offline.</li> </ul>

Enhancement	Version	Description
<b>14.</b> Incorrectly prompting for Cash Back after wrong card slide	828.0 SP1	<ul style="list-style-type: none"> <li>Fixed</li> <li>Prevented OpenEPS from incorrectly prompting for Cash Back after a card slide resulted in an Invalid Card Type error.</li> </ul>
<b>15.</b> Retained transaction info provided to POS	828.0 SP1	<ul style="list-style-type: none"> <li>Fixed</li> <li>After transaction time out and TOR creation, the transaction information in memory is cleared. Previously the memory info was retained until the POS called a reset; this was causing POS systems to incorrectly acquire an approval.</li> </ul>
<b>16.</b> Remove Cancel from MTXLANGDID screen	828.0 SP1	<ul style="list-style-type: none"> <li>Enhancement</li> <li>Removed Cancel Button functionality from MTXLANGDID screen for all MX terminals.</li> </ul>
<b>17.</b> Remove Message to Imprint Card	828.0 SP1	<ul style="list-style-type: none"> <li>Enhancement</li> <li>Modified the provided receipt text for manually entered credit cards to no longer include the line "***** PLEASE IMPRINT CARD *****".</li> </ul>
<b>18.</b> Customer name stored in temp file	828.0 SP1	<ul style="list-style-type: none"> <li>Fixed</li> <li>When the setting to not retain customer names is in use, the name was still stored in a temp file; this has been corrected so that the name is no longer stored, even in a temporary location.</li> </ul>
<b>19.</b> Change required to identify WIC cards as Training	828.0 SP1	<ul style="list-style-type: none"> <li>Fixed</li> <li>Fixed an issue in properly identifying WIC cards as training or redemption in WY, NM, and Cherokee nations.</li> </ul>
<b>20.</b> Pinpad reset not being done after SCATPowerOn message if "b" TAC being used	828.0 SP1	<ul style="list-style-type: none"> <li>Fixed</li> <li>An issue has been resolved with the reset of a Pinpad, where if the b-Verify Card TAC was in use, in the event the Pinpad lost connection during a transaction, the current transaction could finalize, but further transactions could not be completed.</li> </ul>
<b>21.</b> Not populating the HostRetrievalReference	828.0 SP1	<ul style="list-style-type: none"> <li>Fixed</li> <li>Corrected an issue where the Host Retrieval Reference Number field was not being properly populated for the POS to pick up.</li> </ul>

Enhancement	Version	Description
<b>22.</b> Not Logging Receipt Data	828.0 SP1	<ul style="list-style-type: none"> <li>▪ Fixed</li> <li>▪ OpenEPS was not properly logging the set values for the receipt when the data was populated for the POS. this has been fixed so the values are properly record in the log file.</li> </ul>
<b>23.</b> Issue with nonstandard check TAC seq	828.0 SP1	<ul style="list-style-type: none"> <li>▪ Fixed</li> <li>▪ Fixed an issue where missing information during a check transaction that included signature capture would cause the deletion of the signature.</li> </ul>
<b>24.</b> BarCodeActivation issue	828.0 SP1	<ul style="list-style-type: none"> <li>▪ Fixed</li> <li>▪ Fixed an issue where sending a barcode activation would result in a "Transaction Format Error 146 – Invalid Trans".</li> </ul>
<b>25.</b> Buffering Previous Transaction Balances on SET_BarCodeActivation	828.0 SP1	<ul style="list-style-type: none"> <li>▪ Fixed</li> <li>▪ Fixed an issue where OpenEPS was buffering previously obtained balances, when using the logic to use SET_BarCodeActivation.</li> </ul>
<b>26.</b> Crash when UPD downloaded is incomplete or corrupted	828.0 SP1	<ul style="list-style-type: none"> <li>▪ Fixed</li> <li>▪ Fixed issue where bad OpenEPS UPD would crash POS</li> </ul>
<b>27.</b> Manual EBT Cash with CashBack does not prompt cashier to approve cash back	828.0 SP1	<ul style="list-style-type: none"> <li>▪ Fixed</li> <li>▪ Fixed an issue where performing a manual EBT cash tender with cash back failed to prompt the cashier to accept the cash back amount.</li> </ul>
<b>28.</b> No Prompt For Signature on Normal Credit if Extended Data Entry HIPPA signature is used along with the Data Entry Continue Call	828.0 SP1	<ul style="list-style-type: none"> <li>▪ Fixed</li> <li>▪ Corrected an issue where when the HIPPA Extended Data Entry Call was used in the middle of a transition to capture the customer Ok signature, the standard Credit Card signature capture at the end of the transaction was not working properly.</li> </ul>
<b>29.</b> OpenEPS not picking up Fleet restriction code and prompts 828.0 SP1	828.0 SP1	<p>Fixed</p> <p>Fixed an issue where OpenEPS failed to pick up Fleet restriction code and prompts.</p>

Enhancement	Version	Description
<b>30.</b> Buffering Gift Card Customer and Cashier Display Following a Bar Code Activation Transaction	828.0 SP1	<ul style="list-style-type: none"> <li>▪ Fixed</li> <li>▪ Corrected an issue where previous customer and cashier display text was buffered beyond the end of a transaction when using the BarCodeActivation logic.</li> </ul>
<b>31.</b> Won't Unzip Files With Zip Format Version > 2.0	828.0 SP1	<ul style="list-style-type: none"> <li>▪ Fixed</li> <li>▪ Corrected an issue where zip files containing screen file data would not properly unzip; a new compression component is now in use that will decompress the zip file properly.</li> </ul>
<b>32.</b> Additional Discover Prefixes added for Cash back	828.0 SP1	<ul style="list-style-type: none"> <li>▪ Enhancement</li> <li>▪ Added new Discover Card prefixes to the Cash Back logic, so that new Cards will offer cashback properly.</li> </ul>
<b>33.</b> OpenEPS EOD connection issue	828.0 SP1	<ul style="list-style-type: none"> <li>▪ Fixed</li> <li>▪ Corrected an issue where attempting to log on to a POS lane during the WinEPS EOD process would lock OpenEPS and prevent successful connection.</li> </ul>

### OpenIP Changes

Enhancement	Version	Description
1. OpenIP Update	WinEPS Engine Sonic -	<ul style="list-style-type: none"><li>Enhancement</li><li>The current version of WinEPS has been updated with the latest OpenIP functionality.</li></ul>

### Term Handler Changes

Enhancement	Version	Description
1. - No Change to OpenIP -		<ul style="list-style-type: none"><li>---</li></ul>

## Host Changes

### ACI

Enhancement	Version	Description
1. Fail to load certs from windows	828.0	<ul style="list-style-type: none"> <li>▪ Fixed</li> </ul> <p>Fixed an issue where the ACI host would not start successfully if Windows certificates failed to load.</p>
2. Incorrect Value in bit 2-17 on \$0 completion TOR	828.0	<ul style="list-style-type: none"> <li>▪ Fixed</li> <li>▪ Resolved an issue where an incorrect value in bit 2-17 was being sent on a \$0 completion TOR.</li> </ul>
3. PrePaidBin.txt import for ACI	828.0	<ul style="list-style-type: none"> <li>▪ Enhancement</li> <li>▪ Added import of PrePaidBin.txt prepaid bin file for ACI.</li> </ul>
4. Resubmit settlement on 91 decline	828.0	<ul style="list-style-type: none"> <li>▪ Enhancement</li> <li>▪ The ACI host has been updated so that when a settlement is sent out, if WinEPS receives a 91 decline from the host, WinEPS will wait 5 minutes, and then send the settlement out again.</li> <li>▪ This modification only applies to the EOD Settlement message and not to all 91 declines. The settlement will only be re-tried one additional time on a 91 decline, even if it receives a 91 on the resubmit.</li> </ul>
5. Add 10054 error fixes to all SSL hosts	828.0	<ul style="list-style-type: none"> <li>▪ Enhancement</li> <li>▪ The changes made to fix the 10054 disconnect error have been applied to all SSL-using host modules.</li> </ul>
6. Corrected SSL message process issue.	828.0	<ul style="list-style-type: none"> <li>▪ Fixed</li> <li>▪ Corrected an issue with the message process for all SSL hosts when WinEPS sends an EOD message to the host.</li> </ul>

**Ascendent**

Enhancement	Version	Description
1. - No Change to Host -		<ul style="list-style-type: none"> <li>---</li> </ul>

**Concord: EPC**

Enhancement	Version	Description
1. Pad the KSN to 20 with leading FFFF's	828.0	<ul style="list-style-type: none"> <li>Enhancement</li> <li>The outbound message has been modified so that for any transaction using a PIN the KSN value sent will be padded with leading "F's", to a maximum of 20 characters.</li> </ul>
2. Wrong Transaction Type Code on Void and TOR of Returns	828.0 SP1	<ul style="list-style-type: none"> <li>Fixed</li> <li>Corrected Transaction Type Code for Void of Return to '8' (from 'U').</li> <li>Also corrected the Transaction Type Code for TOR Return to 'U'.</li> </ul>

**Concord: H&C Format**

Enhancement	Version	Description
1. Failing to send check number	828.0	<ul style="list-style-type: none"> <li>Fixed</li> <li>Fixed the message out to the host for check messages so that it properly contains the check number.</li> </ul>

Enhancement	Version	Description
2. BIN Prefixes download revision	828.0	<ul style="list-style-type: none"> <li>▪ Fixed</li> <li>▪ Revised logic for adding/removing BIN Prefixes during a partial BIN download from Concord H&amp;C.</li> <li>▪ Added additional logging to the BIN download processing to ensure that the type and result of each BIN file line is recorded.</li> <li>▪ Added a final outgoing confirmation message to the partial BIN update process.</li> </ul>
3. SVS Offline Gift Card Redemption Authorization	828.0	<ul style="list-style-type: none"> <li>▪ Enhancement</li> <li>▪ A new feature has been added to convert Gift Card Redeem transactions that are attempted offline into Voice Authorizations.</li> <li>▪ To assist in supporting this feature, the M - Auth Number TAC has a new "Request SVS Auth Number" setting; when this option is selected the SVS Auth number will be requested instead of the standard authorization number.</li> <li>▪ <a href="#">Full details on this are included in Section 2.</a></li> </ul>
4. Pad the KSN to 20 with leading FFFF's	828.0	<ul style="list-style-type: none"> <li>▪ Enhancement</li> <li>▪ The outbound message has been modified so that for any transaction using a PIN the KSN value sent will be padded with leading "F's", to a maximum of 20 characters.</li> </ul>
5. TORs of manually entered transactions sent with "="	828.0	<ul style="list-style-type: none"> <li>▪ Fixed</li> <li>▪ Fixed format message issue for manual TOR transactions where '=' was incorrectly included. Instead a space will be used as the separator character.</li> </ul>

Enhancement	Version	Description
6. Offline Gift Card Redemption	828.0	<ul style="list-style-type: none"> <li>▪ Fixed</li> <li>▪ Updated OpenEPS to provide the SVSAuthNumber field to WinEPS in the transaction message.</li> <li>▪ SVS Gift Card Force transactions will now be sent to the H&amp;C host using a transaction code of 92.</li> </ul>
7. Incorrect Duplicate decline on Blackhawk activation	828.0	<ul style="list-style-type: none"> <li>▪ Fixed</li> <li>▪ Corrected an issue where the full PAN was not being used to distinguish between cards for supuplicate checking which resulted in cards one digit apart being declined as a duplicate.</li> </ul>

**Concord: Memphis**

Enhancement	Version	Description
1. - No Change to Host -		<ul style="list-style-type: none"> <li>▪ ---</li> </ul>

**Demo**

Enhancement	Version	Description
1. - No Change to Host -		<ul style="list-style-type: none"> <li>▪ ---</li> </ul>

## ePicTranz

Enhancement	Version	Description
1. Add 10054 error fixes to all SSL hosts	828.0	<ul style="list-style-type: none"> <li>▪ Enhancement</li> <li>▪ The changes made to fix the 10054 disconnect error have been applied to all SSL-using host modules.</li> </ul>
2. Corrected SSL message process issue.	828.0	<ul style="list-style-type: none"> <li>▪ Fixed</li> <li>▪ Corrected an issue with the message process for all SSL hosts when WinEPS sends an EOD message to the host.</li> </ul>

## FLC Check Host

Enhancement	Version	Description
1. Revise ECC/NACHA text to dynamically add the returned fee	828.0	<ul style="list-style-type: none"> <li>▪ Enhancement</li> <li>▪ Updated the FLC host to dynamically add the returned check fee amount into the ECC/NACHA text on the receipt.</li> <li>▪ To utilize this feature, the ECC text must be updated to include the desired wording format, and the “~F” replacement identifier. The ~F will be removed from the text and replaced with the actual dollar amount returned by the host.</li> <li>▪ If no amount is returned by the host, the ~F will be replaced with the text "Max Amt by Law".</li> <li>▪ The customer may have to revise the amount of text on the affected ECC text lines in the XML file; the text revision occurs within the ECCRecINFO.xml file.</li> <li>▪ If "~F" is present in the ECC text, no extra fee amount line will be printed. If "~F" is NOT present in the ECC text, the extra fee amount line will be provided.</li> </ul>

## ISD Host

Enhancement	Version	Description
1. ISD Host	827.2/ 828.0	<ul style="list-style-type: none"> <li>▪ Enhancement</li> <li>▪ Added the new ISD host to WinEPS.</li> <li>▪ The Following transaction types are supported: <ul style="list-style-type: none"> <li>Credit: purchase and return (includes FSA transactions). Pre-auth and completions for fuel purchase transactions.</li> <li>Debit: purchase and purchase with cash back.</li> <li>EBT Food Stamp: purchase, return, voucher and balance inquiry</li> <li>EBT Cash: purchase, purchase with cash back, return, voucher and balance inquiry</li> <li>Gift Card: (in-house) activate, redeem, return and balance inquiry</li> <li>Blackhawk GC: activation</li> <li>Checks: purchase with paper checks only</li> <li>Fleet: Pre-auth and completions for fuel purchase transactions. <ul style="list-style-type: none"> <li>○ Only WEX fleet cards are supported and only accepted at the pumps.</li> <li>○ Fuel is not yet complete due to need to implement on the ISD side.</li> </ul> </li> </ul> </li> <li>▪ The ISD host supports a global BIN import process where the BIN information is provided in a DebitBIN.txt file that is placed into the EPS folder.</li> <li>▪ During the EOD process WinEPS performs a total import on the provided DebitBIN.txt, clearing out any previous BIN data and updating to the latest information.</li> <li>▪ There is no close of batch message; this implementation of the ISD host does not require one.</li> <li>▪ <a href="#">Full details on this are included in Section 2.</a></li> </ul>

**LML**

Enhancement	Version	Description
1. Sending bad TOR message	828.0	<ul style="list-style-type: none"> <li>▪ Fixed</li> <li>▪ Corrects an issue where WinEPS was not sending “PAN=exp date” for TORs. Also fixes an issue where WinEPS was not responding correctly to a D07 response code in regards to approving / declining offline.</li> </ul>
2. Velocity message is not being sent to the lane	828.0	<ul style="list-style-type: none"> <li>▪ Fixed</li> <li>▪ Corrected an issue where velocity messages were not being passed to the lane. Added logging to note the velocity message in the spool file.</li> <li>▪ Also corrected an issue where velocity data wasn't being written to the InfoMsg file so that the GUI can pick up that data, and display it to the user, when the user double clicks on the transaction on the WinEPS GUI.</li> </ul>
3. Gift Card balances being applied as partial approvals	828.0	<ul style="list-style-type: none"> <li>▪ Fixed</li> <li>▪ Corrects an issue where the incorrect field was being used for partial approval and remaining balance for gift card.</li> </ul>
4. Update LML D07 to an ND	828.0	<ul style="list-style-type: none"> <li>▪ Fixed</li> <li>▪ The update program has been enhanced to modify the LML D07 response code from an AB (approval) to a correct value of ND (declined)</li> </ul>
5. Not setting Exp Date on Manual or Void	828.0	<ul style="list-style-type: none"> <li>▪ Fixed</li> <li>▪ The issue has been corrected so that the PAN, = sign and then expiration date are sent in the Track2 field for both Manual entered credit and for Voids.</li> </ul>

## RBS WorldPay / RBS Lynk

Enhancement	Version	Description
1. New prefix matching file and hard coded values	828.0	<ul style="list-style-type: none"> <li>▪ Enhancement</li> <li>▪ Updated the host card prefixes; this will supply the link host with the correct card type when card info is sent to the host during a transaction.</li> </ul>
2. Incorrect Duplicate decline on Blackhawk activation	828.0	<ul style="list-style-type: none"> <li>▪ Fixed</li> <li>▪ Corrected an issue where the full PAN was not being used to distinguish between cards for suplicate checking which resulted in cards one digit apart being declined as a duplicate.</li> </ul>
3. Host vs. Store Report for reporting all zeroes	828.0	<ul style="list-style-type: none"> <li>▪ Fixed</li> <li>▪ Resolved an issue where the WinEPS reports were incorrectly displaying a zero value for the Host vs. Store/Settlement report.</li> </ul>
4. Add 10054 error fixes to all SSL hosts	828.0	<ul style="list-style-type: none"> <li>▪ Enhancement</li> <li>▪ The changes made to fix the 10054 disconnect error have been applied to all SSL-using host modules.</li> </ul>
5. Corrected SSL message process issue.	828.0	<ul style="list-style-type: none"> <li>▪ Fixed</li> <li>▪ Corrected an issue with the message process for all SSL hosts when WinEPS sends an EOD message to the host.</li> </ul>
6. Cashback error	828.0	<ul style="list-style-type: none"> <li>▪ Fixed</li> <li>▪ Corrected an issue where an incorrect cashback amount was returned to OpenEPS on partially approved transactions where only some or none of the cashback amount was approved.</li> </ul>
7. Return Check fee amount correction	828.0	<ul style="list-style-type: none"> <li>▪ Fixed</li> <li>▪ Corrected an issue which caused the incorrect the return check fee amount to be provided in the receipt text. This has been corrected to use the correct amount provided by Lynk on approved ECC check transactions.</li> </ul>

Enhancement	Version	Description
<b>8.</b> ECC Acknowledgement request issue	828.0 SP1	<ul style="list-style-type: none"> <li>▪ Fixed</li> <li>▪ Fixed an issue where WinEPS was only passing 9 of the 11 character raw check network reference number in the ECC acknowledgement request.</li> </ul>
<b>9.</b> Allow setting value for "Secs to wait to cycle offline queue"	828.0 SP1	<ul style="list-style-type: none"> <li>▪ Enhancement</li> <li>▪ The Lynk host has been updated to use the customer entered value for "Secs to wait to cycle offline queue" instead of a hard coded default value of 600 seconds.</li> </ul>
<b>10.</b> Incorrect remaining GC balance	828.0 SP1	<ul style="list-style-type: none"> <li>▪ Fixed</li> <li>▪ Corrected issue where gift Card Balance Inquiries and Activations were displaying an incorrect remaining balance on the customer display and receipt.</li> </ul>
<b>11.</b> Cashback field blank on Credit Force	828.0 SP1	<ul style="list-style-type: none"> <li>▪ Fixed</li> <li>▪ Corrected issue with cashback value being incorrectly set to blanks instead of \$0.00 when processing a Credit Force transaction.</li> </ul>

### LX1 & LX2 (Check) Hosts

Enhancement	Version	Description
<b>1.</b> Void of Travelers Check sending DL	828.0	<ul style="list-style-type: none"> <li>▪ Fixed</li> <li>▪ Fixed issue where WinEPS was incorrectly sending up Bit 35 (Swiped Driver's License) to the LX2 host on a check void, when the host returns a Driver's License value in the original authorization response.</li> </ul>
<b>2.</b> Tender Void issue with Time	828.0	<ul style="list-style-type: none"> <li>▪ Fixed</li> <li>▪ Corrected an issue where the Void of a check transaction was not accepted by the host due to mismatch in the time/date field.</li> </ul>

Enhancement	Version	Description
3. Update RS to transfer the Transmission Number	828.0	<ul style="list-style-type: none"> <li>▪ Fixed</li> <li>▪ Corrected an issue where RS did not transfer the Transmission Number to the backup for transactions to the LX / LX2 hosts.</li> </ul>
4. Creating two lane journals	828.0	<ul style="list-style-type: none"> <li>▪ Fixed</li> <li>▪ Corrected an issue with creating two separate journal files that were being created for the same lane, based on the lane number changing from 2 to 3 digits. Now the lane journal will maintain the 2 digit lane number code and no longer attempt to adopt the 3 digit code.</li> </ul>
5. Incorrect Duplicate decline on Blackhawk activation	828.0	<ul style="list-style-type: none"> <li>▪ Fixed</li> <li>▪ Corrected an issue where the full PAN was not being used to distinguish between cards for supplicate checking which resulted in cards one digit apart being declined as a duplicate.</li> </ul>
6. Settlement message being delayed by internal sleeps	828.0	<ul style="list-style-type: none"> <li>▪ Fixed</li> <li>▪ Corrected an issue where, if a settlement message timed out and was placed into the offline queue, when it forwarded up, the offline was not properly removed from the actlog, which resulted in the offline settlement being sent up multiple times.</li> </ul>
7. Track data maximum is 40 characters	828.0	<ul style="list-style-type: none"> <li>▪ Enhancement</li> <li>▪ Updated the host module to allow a maximum Track2 length of 40 characters, including begin and end sentinels, to be sent to the host.</li> <li>▪ Track data that is longer than 40 characters will result in an Invalid Track Data decline, without being sent to the host.</li> </ul>
8. Corrected SSL message process issue.	828.0	<ul style="list-style-type: none"> <li>▪ Fixed</li> <li>▪ Corrected an issue with the message process for all SSL hosts when WinEPS sends an EOD message to the host.</li> </ul>

Enhancement	Version	Description
9. No Cashback prompt	828.0 SP1	<ul style="list-style-type: none"> <li>▪ Bug: Production</li> <li>▪ Fixed an issue with Cashback where when autotender was used to determine the card type, no prompt to select cashback amount was provided.</li> </ul>
10. Cashier Sign on missing during UPD upgrade	828.0 SP1	<ul style="list-style-type: none"> <li>▪ Fixed</li> <li>▪ Fixed issue with auto checker sign on after automatic UPD download and update.</li> </ul>
11. 680 message not clearing slots	828.0 SP1	<ul style="list-style-type: none"> <li>▪ Fixed</li> <li>▪ Fixed slot issue for 680 messages where the 680 would be treated as a financial transaction and would use a host slot.</li> </ul>
12. Voiding of Store GC or Mall Cards activation gets declined in Training Mode	828.0 SP1	<ul style="list-style-type: none"> <li>▪ Fixed</li> <li>▪ Corrected an issue where Voiding a store GC or Mall Card a declined message when in Training Mode.</li> </ul>
13. Security Error corrected	828.0 SP1	<ul style="list-style-type: none"> <li>▪ Fixed</li> <li>▪ Fixed issue security error reporting "invalid base64 character" message.</li> </ul>
14. Host Screen offline by card code quotation marks issue	828.0 SP1	<ul style="list-style-type: none"> <li>▪ Fixed</li> <li>▪ Corrected issue where the Offline Card Code incorrectly contained quotation marks in the field.</li> </ul>
15. Reset button on Q TAC Freq Shopper screen does not cancel transaction	828.0 SP1	<ul style="list-style-type: none"> <li>▪ Enhancement</li> <li>▪ On the new Q-TAC -Frequent Shopper DID screen, the cancel button has been modified to cancel the whole transaction and reset the terminal instead of just clearing the screen it was on.</li> </ul>
16. AV created when reading the lane number on cashier sign on	828.0 SP1	<ul style="list-style-type: none"> <li>▪ Fixed</li> <li>▪ Corrected issue here an Access Violation would occur when trying to read a lane number with 3 digits.</li> </ul>

Enhancement	Version	Description
<b>17.</b> Unable to void a traveler's check tender	828.0 SP1	<ul style="list-style-type: none"> <li>▪ Fixed</li> <li>▪ Corrected an issue with being unable to void a traveler's check.</li> </ul>

### Mainsail

Enhancement	Version	Description
<b>1.</b> - No Change to Host -		<ul style="list-style-type: none"> <li>▪ ---</li> </ul>

### Mercury

Enhancement	Version	Description
<b>1.</b> - No Change to Host -		<ul style="list-style-type: none"> <li>▪ ---</li> </ul>

### Moneris

Enhancement	Version	Description
<b>1.</b> New host: Moneris EMV	828.0	<p>New Host</p> <p>WinEPS now supports the new Moneris host interface.</p> <p>This host is primarily for use with EMV / Fuel.</p> <ul style="list-style-type: none"> <li>▪ <a href="#">Full details on this are included in Section 2.</a></li> </ul>

Enhancement	Version	Description
2. Receipt Info to Pump	828.0 SP1	<ul style="list-style-type: none"> <li>Enhancement</li> <li>WinEPS now sends the header and ISO Response Code back to the pump on all transactions.</li> </ul>
3. Send correct reversal type when a \$0 completion received with reversal indicator	828.0 SP1	<ul style="list-style-type: none"> <li>Fixed</li> <li>In the event that WinEPS receives a \$0 Completion, that needs to be transitioned into a Reversal of the PreAuth instead of sending as a \$0 Completion transaction.</li> </ul>
4. MAC requires MAC string	828.0 SP1	<ul style="list-style-type: none"> <li>Fixed</li> <li>Corrected messaging between WinEPS and Moneris so that each time a MAC value (fid q) is sent, the MAC string (fid s) is also sent.</li> </ul>
5. Locally approved pre-auths wineps are sending \$0 to the pump	828.0 SP1	<ul style="list-style-type: none"> <li>Fixed</li> <li>For locally approved PreAuthorizations, WinEPs was sending back \$0 as the PreAuth amount to the Pump; this has been corrected so that WinEPS will send the pre-configured offline amount.</li> </ul>
6. Do not allow fallback based on configuration settings and local approval requirements	828.0 SP1	<ul style="list-style-type: none"> <li>Fixed</li> <li>Made a change to prevent local approval of any fallback.</li> <li>Added a new Card Process Profile option to Allow Fallback. If this option is set to No, and the entry mode for a transaction is either 62 or 63 then the transaction will be declined as "Fallback Not allowed".</li> </ul>
7. Problems with Amex when PreAuth is online and the Completion is offline	828.0 SP1	<ul style="list-style-type: none"> <li>Fixed</li> <li>Fixed an issue where the Store and Forward Terminal ID was being used when building the MAC string, however the Lane Terminal ID was the one that was sent in the transaction causing a decline due to MAC failure.</li> <li>No longer setting control flag to 1 in the sequence number.</li> </ul>
8. Missing Transaction Code on MAC and Controller Reversals	828.0 SP1	<ul style="list-style-type: none"> <li>Fixed</li> <li>Corrected an issue where MAC and Controller Reversals were missing the Transaction Code from the Original Transaction.</li> </ul>

Enhancement	Version	Description
<b>9.</b> Missing EMV data on the resubmission of on offline	828.0 SP1	<ul style="list-style-type: none"> <li>▪ Fixed</li> <li>▪ Corrected an issue where after a timeout and TOR transaction, the offline transaction was missing the EMV tags.</li> </ul>
<b>10.</b> Not sending 9F on completions	828.0 SP1	<ul style="list-style-type: none"> <li>▪ Fixed</li> <li>▪ Corrected an issue where WinEPS was not properly echoing sFID 9F from the PreAuth on all Completions.</li> </ul>
<b>11.</b> SAF AMEX needs to be sent as a purchase	828.0 SP1	<ul style="list-style-type: none"> <li>▪ Fixed</li> <li>▪ All Store and forward American Express Completions will now be sent up as Purchases.</li> </ul>

### MPS (Fifth Third)

Enhancement	Version	Description
<b>1.</b> Incorrect Duplicate decline on Blackhawk activation	828.0	<ul style="list-style-type: none"> <li>▪ Fixed</li> <li>▪ Corrected an issue where the full PAN was not being used to distinguish between cards for supplicate checking which resulted in cards one digit apart being declined as a duplicate.</li> </ul>
<b>2.</b> Host Drops During Tor Processing	828.0	<ul style="list-style-type: none"> <li>▪ Fixed</li> <li>▪ Fixed an issue where WinEPS would drop TORs due to socket disconnection.</li> </ul>
<b>3.</b> Manual Voucher Transactions Incorrectly Formatted	828.0	<ul style="list-style-type: none"> <li>▪ Fixed</li> <li>▪ Corrected an issue where MPS Manual Voucher transactions were incorrectly including set bit 52 (PIN) and bit 117 (KSN). This has been corrected to no longer send those bits.</li> </ul>
<b>4.</b> Manual Vouchers Transactions Incorrectly Formatted	828.0 SP1	<ul style="list-style-type: none"> <li>▪ Fixed</li> <li>▪ Fixed an issue where manual voucher transactions were being sent with incorrect formatting, resulting in declines.</li> </ul>

Enhancement	Version	Description
5. Void of an Offline, Auth Code missing	828.0 SP1	<ul style="list-style-type: none"> <li>Bug: Production</li> <li>When voiding an offline transaction that has been approved, the Auth Code of the original transaction (Bit 90 - Original Retrieval Reference Number) was missing. This has been corrected to include the Auth Code for the original transaction.</li> </ul>
6. Offline transaction that are Fwd approved cannot be voided	828.0 SP1	<ul style="list-style-type: none"> <li>Fixed</li> <li>Corrected an issue where an incorrect STAN on the initial Forward Approved transition prevented subsequent void of that transaction.</li> </ul>

**MTX Receipt Capture Host**

Enhancement	Version	Description
13. Receipt account number field corrupted	828.0	<ul style="list-style-type: none"> <li>Fixed</li> <li>Fixed an issue with corrupted account numbers on uploaded receipts.</li> </ul>
14. Signature Response message error after upgrade	828.0	<ul style="list-style-type: none"> <li>Fixed</li> <li>Corrected an issue where the 0330 signature response message was using the wrong lane and sequence number.</li> </ul>

**Schnucks Check Auth**

Enhancement	Version	Description
1. - No Change to Host -		<ul style="list-style-type: none"> <li>---</li> </ul>

**ServerEPS (Native Format)**

Enhancement	Version	Description
<b>1.</b> - No Change to Host -		▪ ---

**SVDot Gift Card Host**

Enhancement	Version	Description
<b>1.</b> - No Change to Host -		▪ ---

## Terminal Code Changes

### Hypercom ICE5500

Enhancement	Version	Description
1. - No Change to Terminal-		<ul style="list-style-type: none"> <li>---</li> </ul>

### Hypercom L4100

Enhancement	Version	Description
1. WIC Enhancement: Remove Card	828.0	<ul style="list-style-type: none"> <li>Enhancement</li> <li>Improved the handling of the "Remove_WIC_ICC" POS call to enable the Hypercom PIN pads to display an appropriate message.</li> </ul>

### Hypercom L4150

Enhancement	Version	Description
1. WIC Enhancement: Remove Card	828.0	<ul style="list-style-type: none"> <li>Enhancement</li> <li>Improved the handling of the "Remove_WIC_ICC" POS call to enable the Hypercom PIN pads to display an appropriate message.</li> </ul>

### Hypercom L4150 PCI 2.0

Enhancement	Version	Description
1. WIC Enhancement: Remove Card	828.0	<ul style="list-style-type: none"> <li>Enhancement</li> <li>Improved the handling of the "Remove_WIC_ICC" POS call to enable the Hypercom PIN pads to display an appropriate message.</li> </ul>

**Hypercom L4250**

Enhancement	Version	Description
1. WIC Enhancement: Remove Card	828.0	<ul style="list-style-type: none"> <li>▪ Enhancement</li> <li>▪ Improved the handling of the "Remove_WIC_ICC" POS call to enable the Hypercom PIN pads to display an appropriate message.</li> </ul>

**Hypercom L5300**

Enhancement	Version	Description
1. Add HYP5300 to WinEPS	828.0	<ul style="list-style-type: none"> <li>▪ Enhancement</li> <li>▪ Added support for the Hypercom 5300 terminal.</li> <li>▪ Terminal code for this terminal is not yet available.</li> </ul>

**Ingenico eN-Crypt 2100**

Enhancement	Version	Description
1. - No Change to Terminal		<ul style="list-style-type: none"> <li>▪ ---</li> </ul>

**Ingenico eN-Touch 1000**

Enhancement	Version	Description
1. - No Change to Terminal-		<ul style="list-style-type: none"> <li>▪ ---</li> </ul>

**Ingenico 6550 / 6780**

Enhancement	Version	Description
1. - No Change to Terminal-		<ul style="list-style-type: none"> <li>▪ ---</li> </ul>

**Verifone Everest**

Enhancement	Version	Description
1. - No Change to Terminal-		<ul style="list-style-type: none"> <li>▪ ---</li> </ul>

**Verifone MX830/MX850/MX860/MX870/MX880**

Enhancement	Version	Description
1. Add Min and Max Length to Digital ID data entry request	828.0	<ul style="list-style-type: none"> <li>▪ Enhancement</li> <li>▪ Added a new enhancement to the Digital ID prompt, to allow the customer to select the length of the customer entered data.</li> <li>▪ The Min/Max value can be set from 1 to 40 characters.</li> <li>▪ This functionality as available only for the following terminals:               <ul style="list-style-type: none"> <li>○ MX 860</li> <li>○ MX 880</li> <li>○ MX 830</li> </ul> </li> <li>▪ NOTE: Not all terminals respect the minimum value provided to them by OpenEPS.</li> </ul>

Enhancement	Version	Description
2. Replace previous MX PIN Pad Form Agent with new 231Q	828.0	<ul style="list-style-type: none"> <li>Enhancement</li> <li>Updated the MX terminal form agent screen zips packages to the latest 231Q MX Form Agent Code.</li> </ul>
3. MX Terminals Are Not Ignoring the B TAC Property to Disble the NO/Zero Key	828.0 SP1	<ul style="list-style-type: none"> <li>Fixed</li> <li>Corrected an issue with the MX Pinpad's where using the Disable No/Zero Key property on the B TAC would not properly prevent the Manual Soft key from being displayed. This has been corrected so that the Manual soft key is no longer displayed when this option is on.</li> </ul>
4. New 2.22 WIC modules included in WinEPS screenfiles	828.0 SP1	<ul style="list-style-type: none"> <li>Enhancement</li> <li>231Q form agent and screen package now include the 2.22 version of WIC.</li> </ul>

**Verifone Mx760/OP 4100**

Enhancement	Version	Description
1. - No Change to Terminal-		<ul style="list-style-type: none"> <li>---</li> </ul>

**Verifone Omni 7000**

Enhancement	Version	Description
1. - No Change to Terminal-		<ul style="list-style-type: none"> <li>---</li> </ul>

**VeriFone Vx670 (Wireless Terminal)**

Enhancement	Version	Description
1. - No Change to Terminal-		▪ ---

## Stand Beside Code Changes

### Verifone Vx570

Enhancement	Version	Description
1. - No Change to Terminal-		<ul style="list-style-type: none"> <li>---</li> </ul>

## External Program Changes

### Engine Monitor and Tray Icon

Enhancement	Version	Description
1. - No Change -		<ul style="list-style-type: none"> <li>---</li> </ul>

### IBM Interface

Enhancement	Version	Description
1. IBM getting MTX-101 Decline, when 101 should be approval	828.0	<ul style="list-style-type: none"> <li>Fixed</li> <li>Corrected an issue where transactions were incorrectly reported as a 101 decline in the WinEPS reports where a 101 code indicates an approval.</li> </ul>

### OMNI 7000 Scanmaster Code

Terminal code for the Scanmaster system is written and maintained by Concord. It is distributed on the WinEPS installation CD for convenience only.

Enhancement	Version	Description
1. - No Change -		<ul style="list-style-type: none"> <li>---</li> </ul>

### Redundancy Service

Enhancement	Version	Description
1. Not handling large signature transaction replications	828.0	<ul style="list-style-type: none"> <li>Fixed</li> <li>Corrected an issue where, if the signature message was too large, the message would be discarded instead of properly replicated to the backup. Signatures are now replicated properly to the backup RS server.</li> </ul>
2. RS not receiving the final EOD message from WinEPS	828.0	<ul style="list-style-type: none"> <li>Fixed</li> <li>Corrected issue where RS would disconnect from WinEPS just prior to receiving the End of Day (EOD) message, which would prevent RS from cutting over on time. RS now remains connected during the WinEPS EOD processing period and if RS does not receive the final EOD message, RS will still cut over its logs after only 10 minutes delay.</li> </ul>
3. Engine crash due to RS disconnect	828.0	<ul style="list-style-type: none"> <li>Fixed</li> <li>Fixed an issue that would cause the WinEPS engine to give access violations each time that the RS service disconnected, eventually leading to an engine crash. This has been corrected so that connectivity to other systems does not cause an AV and disconnections no longer cause any issues.</li> </ul>
4. Remove excessive log line	828.0	<ul style="list-style-type: none"> <li>Fixed</li> <li>Removed excessive logging of the 'not connected to WinEPS' message.</li> </ul>

Enhancement	Version	Description
<b>5.</b> EPS paths in registry not updated when RS starts	828.0	<ul style="list-style-type: none"> <li>▪ Fixed</li> </ul> <p>Fixed an issue where the RS service did not update the EPS path in the registry when RS started.</p>
<b>6.</b> Version info log lines	828.0	<ul style="list-style-type: none"> <li>▪ Enhancement</li> <li>▪ Added logging of RS version numbers to the beginning of each log file.</li> </ul>
<b>7.</b> Failing to clear Stop status when restarting	828.0	<ul style="list-style-type: none"> <li>▪ Fixed</li> <li>▪ Corrected an issue where using the RS Agent to stop the service without shutting down the Agent afterward would result in the Stop command being locked in and preventing a successfully RS restart.</li> </ul>
<b>8.</b> Path name for WinEPS missing trailing slash	828.0 SP1	<ul style="list-style-type: none"> <li>▪ Fixed</li> <li>▪ Corrected an issue where the patch logged in the register for WinEPS was missing the trailing slash, which caused the creation of incorrectly named files.</li> </ul>
<b>9.</b> Primary Agent lacks status during sync	828.0 SP1	<ul style="list-style-type: none"> <li>▪ Fixed</li> <li>▪ Corrected an issue with the Redundancy Service where during a synch the Agents would not display the proper status and progress.</li> </ul>
<b>10.</b> Menu and RPT aren't killed when starting a sync	828.0 SP1	<ul style="list-style-type: none"> <li>▪ Fixed</li> <li>▪ In the event of a synch, RS calls multikill to shut down the Menu and Report modules on the target machine. This was not correctly working, and has been fixed by updating the multikill executable to a newer version.</li> </ul>

Enhancement	Version	Description
<p><b>11.</b> Sync History / Completion isn't reflected on Primary</p>	<p>828.0 SP1</p>	<ul style="list-style-type: none"> <li>▪ Fixed</li> <li>▪ Corrected an issue where information wasn't being displayed on the Primary Agent screen.</li> <li>▪ Corrected an issue where sync completion and history was not reflected on the Primary.</li> <li>▪ Corrected an issue where manually initiated syncs would cause a repeating consecutive synchronizing.</li> <li>▪ Corrected an issue where the progress bar would not function on whichever Agent started a manual sync.</li> <li>▪ Corrected an issue where the Post-EOD sync wasn't being displayed on the RS Agent.</li> </ul>

**UpdateXMLFiles.Exe**

Enhancement	Version	Description
<p><b>1.</b> - No Change -</p>		<ul style="list-style-type: none"> <li>▪ ---</li> </ul>

**Virtual Terminal 2**

Enhancement	Version	Description
<p><b>1.</b> Correct amount entry behavior</p>	<p>828.0</p>	<ul style="list-style-type: none"> <li>▪ Fixed</li> <li>▪ Fixed an issue where, on the amount entry screen, clicking elsewhere on the screen would reset the cursor to the very left of the data entry line, causing an amount that was entered to be incorrect. The amount entry cursor will now remain on the right side to allow for correct amount entry.</li> </ul>

**Voucher Clear Application**

Enhancement	Version	Description
<b>1.</b> Amount field includes spaces if the amount is updated	828.0 SP1	<ul style="list-style-type: none"><li>▪ Fixed</li><li>▪ Fixed an issue where transactions updated by the Voucher Clear Application would have extra spaces added to the amount field.</li></ul>

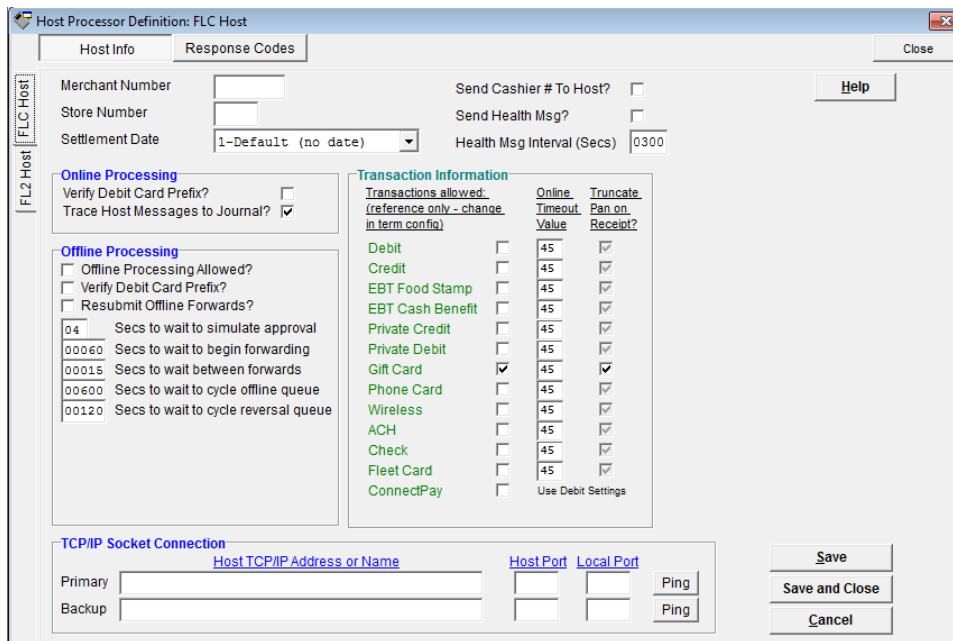
## Section 2

### New Features

#### New FLC Check Host

##### FLC Host Processor Definition Screen

This screen contains all the configuration options pertaining to the selected host.



FLC Host Info Screen

Enhancement	Description
Merchant Number	Supplied by host
Store Number	Supplied by host

Enhancement	Description
Settlement Date	Default (No Date) Current date Current data minus 1
Online Processing	Verify Debit Card Prefix? <ul style="list-style-type: none"> <li>▪ Check this box to force verification of Debit prefixes against the WinEPS debit bin file</li> </ul> Trace Host Messages <ul style="list-style-type: none"> <li>▪ Should always be checked; this provides additional information for troubleshooting.</li> </ul>
Offline Processing	Offline Processing allowed? <ul style="list-style-type: none"> <li>▪ Indicates whether offline processing for this host is allowed.</li> </ul> Verify Debit Card Prefix? <ul style="list-style-type: none"> <li>▪ Check this box to force verification of Debit prefixes against the WinEPS debit bin file</li> </ul> Resubmit Offline Forwards? <ul style="list-style-type: none"> <li>▪ Check to save and resubmit offline forwards that were declined due to insufficient funds; attempts over the next several days to complete the offline transaction.</li> </ul>
Send Health Msg?	If checked, a health message is sent to the host.
Health Msg Interval (Secs)	If the Send Health Msg? option is checked, this option determines how often the health message is sent up, in seconds.
Primary Addr or Name	Supplied by host

Enhancement	Description
Backup Addr or Name	Supplied by host

Buttons	Description
Help	Brings up this Help screen
Save	Saves configuration changes without closing screen.
Save and Close	Saves configuration changes and closes the screen.
Cancel	Closes screen without saving changes.

## FLC Supported Transaction Types

	Purchase / GC Redeem	Purch w/ CB	Cash Back Only	Return	Force [Voice/ Voucher]	Return Voucher	Balance Inquiry	Activation	Deactivation	Recharge	PreAuth / Completion
ACH	X	X	X	X	X	NA	NA	NA	NA	NA	X
Check (Electronic Check Conversion)	O (VO)	O (VO)	O (VO)	NA	X	NA	NA	NA	NA	NA	NA
Check (Standard)	O (VO)	O (VO)	O (VO)	NA	X	NA	NA	NA	NA	NA	NA
Connect Pay	X	NA	NA	X	NA	NA	NA	NA	NA	NA	NA
Credit Card	X	X	X	X	X	NA	NA	NA	NA	NA	X
Debit	X	X	X	X	NA	NA	NA	NA	NA	NA	X
EBT – Cash	X	X	X	X	X	NA	X	NA	NA	NA	X
EBT – Food Stamp	X	NA	NA	X	X	NA	X	NA	NA	NA	NA
Fleet	X	NA	NA	X	X	NA	NA	NA	NA	NA	X
Gift Card	B	NA	NA	X	X	NA	X	X	X	X	X
Phone Card	NA	NA	NA	NA	NA	NA	NA	X	X	X	NA
Private Credit	X	X	X	X	NA	NA	NA	NA	NA	NA	X
Private Debit	X	X	X	X	NA	NA	NA	NA	NA	NA	X
Wireless	NA	NA	NA	NA	NA	NA	NA	X	X	X	NA

### Legend:

- O – Online only
- B – Both On & Offline
- B/Disc – As B, with Discover Card only
- (V) – Transaction Can be Voided
- (VO) – Can be Voided Online Only
- X – Not Supported

## FLC Additional Information

ECC Conversion can only occur for online transactions

Offline check approvals are governed by the standard Offline amounts, as defined in the Card Processing Profile. If the transaction is under the approval amount, the check will be approved as a paper auth and the cashier will need to keep the check.

Offline Paper check auths are not stored and forwarded to the host

Offline Void of Online ECC is stored and sent up to the host later, when the host connection is reestablished.

Voids of Paper Auth checks are supported, but are not required to be performed, as paper auths are not considered financial transactions.

The FLC host supports using the following new response codes:

- AS – Soft Approval; Indicates that Telecheck has approved the transaction for ECC and requires signature confirmation before proceeding.
- NE – Soft Decline, request for additional information
- NG – Soft Decline, request for additional information

When the FLC host is defined, the FL2 host will automatically be defined as well. The FL2 host is not in use at this time, however. The FL2 host should have its primary IP address defined as 127.0.0.1, with a port defined as an open port on the local machine, such as 5110.

## ISD Host

### ISD Host Processor Definition Screen

ISD Host Info Screen

Enhancement	Description
Merchant Number	Supplied by host
Device ID	Supplied by host
Online Processing	<p>Verify Debit Card Prefix?</p> <ul style="list-style-type: none"> <li>▪ Check this box to force verification of Debit prefixes against the WinEPS debit bin file</li> </ul> <p>Trace Host Messages</p> <ul style="list-style-type: none"> <li>▪ Should always be checked; this provides additional information for troubleshooting.</li> </ul>
Offline Processing	<p>Offline Processing allowed?</p> <ul style="list-style-type: none"> <li>▪ Indicates whether offline processing for this host is allowed.</li> </ul> <p>Verify Debit Card Prefix?</p> <ul style="list-style-type: none"> <li>▪ Check this box to force verification of Debit prefixes against the WinEPS debit bin file</li> </ul> <p>Resubmit Offline Forwards?</p> <ul style="list-style-type: none"> <li>▪ Check to save and resubmit offline forwards that were declined due to insufficient funds; attempts over the next several days to complete the offline transaction.</li> </ul>
Primary Addr or Name	Supplied by host
Backup Addr or Name	Supplied by host

Buttons	Description
Help	Brings up this Help screen
Save	Saves configuration changes without closing screen.
Save and Close	Saves configuration changes and closes the screen.
Cancel	Closes screen without saving changes.

**ISD Supported Transaction Types**

	Purchase / GC Redeem	Purch w/ CB	Cash Back Only	Return	Force [Voice/ Voucher]	Return Voucher	Balance Inquiry	Activation	Deactivation	Recharge	PreAuth / Completion
ACH	X	X	X	X	X	NA	NA	NA	NA	NA	X
Check (Electronic Check Conversion)	X	X	X	NA	X	NA	NA	NA	NA	NA	NA
Check (Standard)	O	X	X	NA	X	NA	NA	NA	NA	NA	NA
Connect Pay	X	NA	NA	X	NA	NA	NA	NA	NA	NA	NA
Credit Card	B (V)	B (V)	B (V)	B (V)	X	NA	NA	NA	NA	NA	B
Debit	O	O	X	X	NA	NA	NA	NA	NA	NA	X
EBT – Cash	O	O	O	O	X	NA	O	NA	NA	NA	X
EBT – Food Stamp	O	NA	NA	O	O	NA	O	NA	NA	NA	NA
Fleet		NA	NA	X	X	NA	NA	NA	NA	NA	
Gift Card	O	NA	NA	O	X	NA	O	O	X	X	X
Phone Card	NA	NA	NA	NA	NA	NA	NA	X	X	X	NA
Private Credit	X	X	X	X	NA	NA	NA	NA	NA	NA	X
Private Debit	X	X	X	X	NA	NA	NA	NA	NA	NA	X
Wireless	NA	NA	NA	NA	NA	NA	NA	X	X	X	NA

**Legend:**

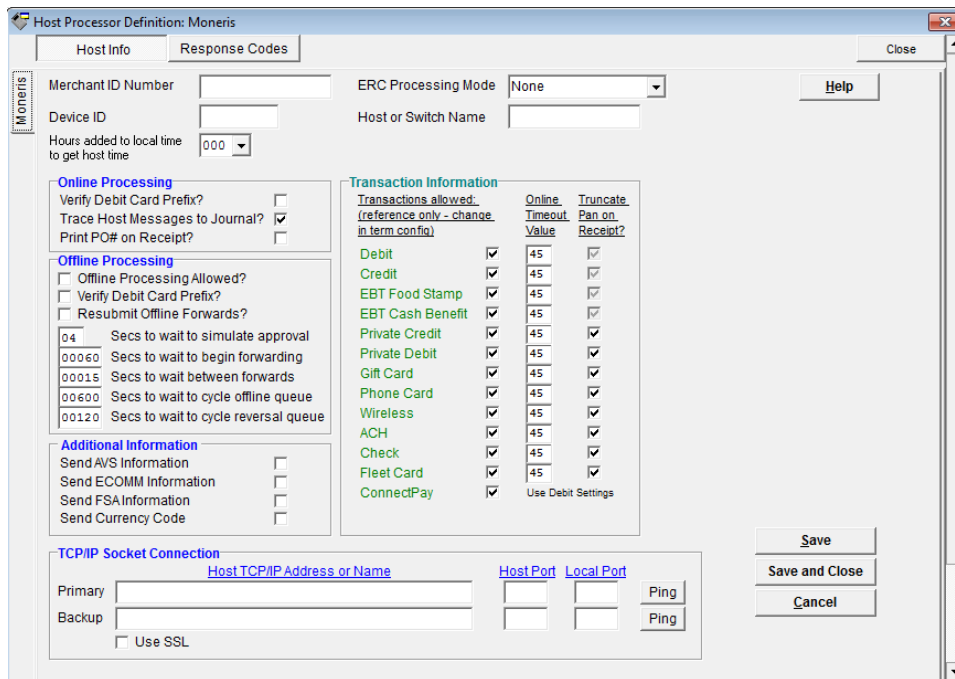
<b>O</b>	– Online only
<b>B</b>	– Both On & Offline
<b>B/Disc</b>	– As <b>B</b> , with Discover Card only
<b>(V)</b>	– Transaction Can be Voided
<b>(VO)</b>	– Can be Voided Online Only
<b>X</b>	– Not Supported
<b>NA</b>	– Not Applicable to Transaction Type

**ISD Additional Information**

- The Following transaction types are supported:
  - Credit: purchase and return (includes FSA transactions). Pre-auth and completions for fuel purchase transactions.
  - Debit: purchase and purchase with cash back.
  - EBT Food Stamp: purchase, return, voucher and balance inquiry
  - EBT Cash: purchase, purchase with cash back, return, voucher and balance inquiry
  - Gift Card: (in-house) activate, redeem, return and balance inquiry
  - Blackhawk GC: activation
  - Checks: purchase with paper checks only
  - Fleet: Pre-auth and completions for fuel purchase transactions.
    - Only WEX fleet cards are supported and only accepted at the pumps.
    - Fuel is not yet complete due to need to implement on the ISD side.
  
- The ISD host supports a global BIN import process where the BIN information is provided in a DebitBIN.txt file that is placed into the EPS folder.
- During the EOD process WinEPS performs a total import on the provided DebitBIN.txt, clearing out any previous BIN data and updating to the latest information.
  
- There is no close of batch message; this implementation of the ISD host does not require one.

## Moneris Host

### Moneris Host Processor Definition Screen



Moneris Host Info Screen

Enhancement	Description
Merchant Number	Supplied by host
Device ID	Supplied by host
ERC Processing Mode	None: Make Import File: Batch at Day End:
Host or Switch Name	

Enhancement	Description
Online Processing	<p>Verify Debit Card Prefix?</p> <ul style="list-style-type: none"> <li>▪ Check this box to force verification of Debit prefixes against the WinEPS debit bin file</li> </ul> <p>Trace Host Messages</p> <ul style="list-style-type: none"> <li>▪ Should always be checked; this provides additional information for troubleshooting.</li> </ul> <p>Print PO# on Receipt</p> <ul style="list-style-type: none"> <li>▪ When checked, prints the Purchase Order # on the receipt, if supplied.</li> </ul>
Offline Processing	<p>Offline Processing allowed?</p> <ul style="list-style-type: none"> <li>▪ Indicates whether offline processing for this host is allowed.</li> </ul> <p>Verify Debit Card Prefix?</p> <ul style="list-style-type: none"> <li>▪ Check this box to force verification of Debit prefixes against the WinEPS debit bin file</li> </ul> <p>Resubmit Offline Forwards?</p> <ul style="list-style-type: none"> <li>▪ Check to save and resubmit offline forwards that were declined due to insufficient funds; attempts over the next several days to complete the offline transaction.</li> </ul>
Additional Information	<p>Send AVS Information</p> <p>Send ECOMM Information</p> <p>Send FSA Information</p> <p>Send Currency Code</p>
Primary Addr or Name	Supplied by host
Backup Addr or Name	Supplied by host

Buttons	Description
Help	Brings up this Help screen
Save	Saves configuration changes without closing screen.
Save and Close	Saves configuration changes and closes the screen.
Cancel	Closes screen without saving changes.

**Moneris Supported Transaction Types**

	Purchase / GC Redeem	Purch w/ CB	Cash Back Only	Return	Force [Voice/ Voucher]	Return Voucher	Balance Inquiry	Activation	Deactivation	Recharge	PreAuth / Completion
ACH	X	X	X	X	X	NA	NA	NA	NA	NA	X
Check (Electronic Check Conversion)	X	X	X	NA	X	NA	NA	NA	NA	NA	NA
Check (Standard)	X	X	X	NA	X	NA	NA	NA	NA	NA	NA
Connect Pay	X	NA	NA	X	NA	NA	NA	NA	NA	NA	NA
Credit Card	X	X	X	X	X	NA	NA	NA	NA	NA	B
Debit	X	X	X	X	NA	NA	NA	NA	NA	NA	B
EBT – Cash	X	X	X	X	X	NA	X	NA	NA	NA	X
EBT – Food Stamp	X	NA	NA	X	X	NA	X	NA	NA	NA	NA
Fleet	X	NA	NA	X	X	NA	NA	NA	NA	NA	X
Gift Card	X	NA	NA	X	X	NA	X	X	X	X	X
Phone Card	NA	NA	NA	NA	NA	NA	NA	X	X	X	NA
Private Credit	X	X	X	X	NA	NA	NA	NA	NA	NA	X
Private Debit	X	X	X	X	NA	NA	NA	NA	NA	NA	X

Wireless	NA	NA	NA	NA	NA	NA	NA	X	X	X	NA
----------	----	----	----	----	----	----	----	---	---	---	----

**Legend:**

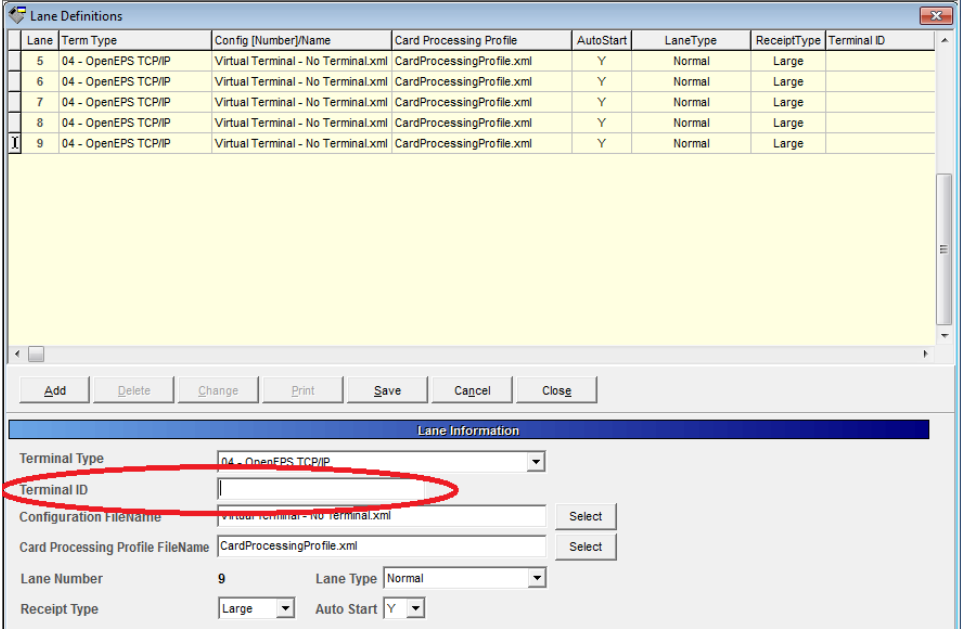
- O** – Online only
- B** – Both On & Offline
- B/Disc** – As **B**, with Discover Card only
- (V)** – Transaction Can be Voided
- (VO)** – Can be Voided Online Only
- X** – Not Supported

**Moneris Additional Information**

**Moneris Terminal ID Settings**

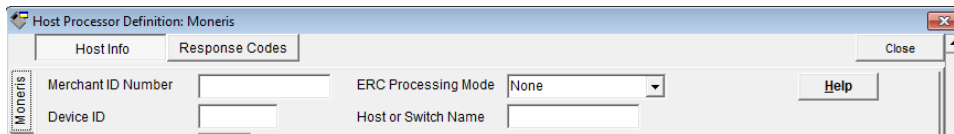
For the Moneris host, the Terminal ID Settings are located in two places: The Host Screen and the Lane Definition screen.

In the Lane Definition screen (Site Information | Lane Definition), each lane can be set with their own unique Terminal ID value.



This value is sent up to the Moneris host with each transaction processed by that lane.

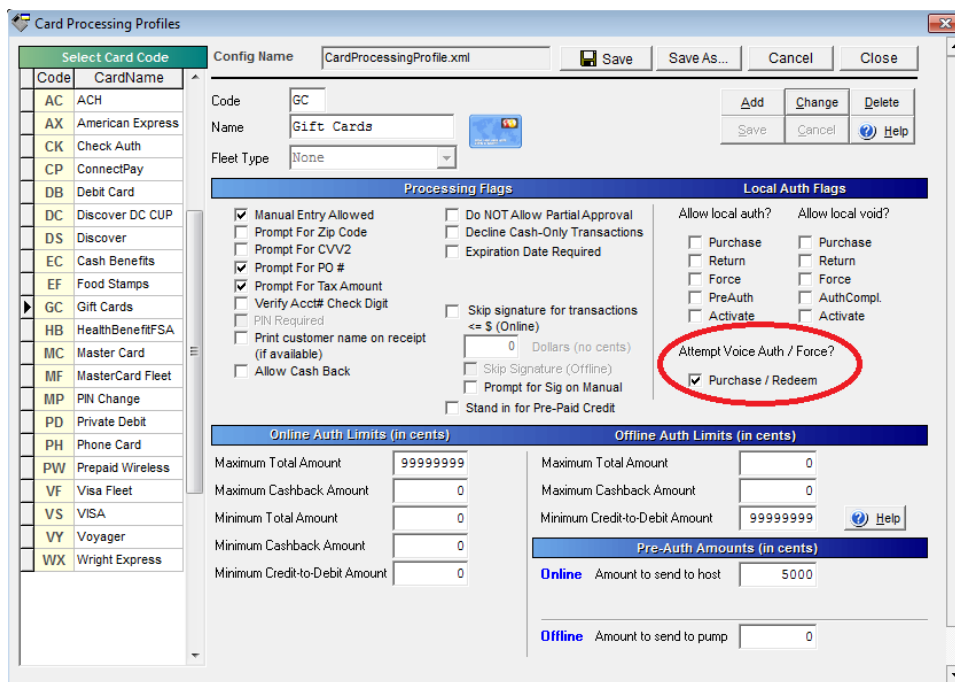
On the host screen (Site Information | Host Processor Definition), the Device ID is set with a value that is sent to the host for every transaction from a lane that does not have a specific Terminal ID sent, and is thus treated as a default value.



## Voice Authorization Instead of Decline on Offline Purchase

### Attempt Voice Auth / Force

A new option for Purchase / Redeem transactions has been added to the Card Process Profiles screen that will attempt perform a Voice Authorization for offline transactions, instead of declining. To use this option, the POS must support the NV Soft Decline response code.



When the Attempt Voice Auth / Force option is selected for Purchase / Redeem, whenever a Purchase / Redeem transaction is attempted offline, instead of receiving a hard decline, WinEPS will provide an NV soft decline to the POS, which will prompt the cashier to attempt to perform a Voice Authorization. If a voice auth is performed, and an approval number is entered, the transaction is then stored for processing to the host at a later time as a pre-approved Force transaction.

Attempt Voice Auth / Force is available only for Purchase / Redeem transactions.

The Attempt Voice Auth / Force takes the place of standard offline processing where a dollar amount is specified for approval; if Attempt Voice Auth / Force is configured for Purchase / Redeem, the standard offline process will be disabled for Purchase / Redeem, and any amounts listed for Offline will be ignored for Purchase / Redeem transactions.

## **Do Not Retain Customer Name Option**

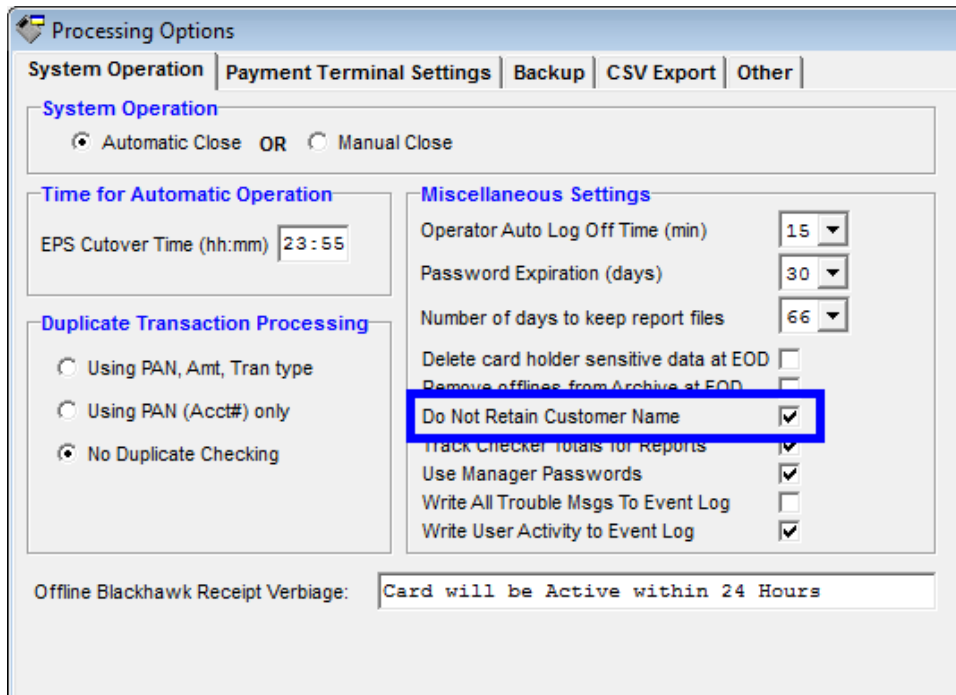
### **New Option to Stop Retaining the Customer Name**

A new option has been created that will prevent the recording of any customer name that is acquired from the Track2 data on a slid card, or any that is set to OpenEPS by the POS.

This option will not retroactively remove logged names from already existing OpenEPS jrnl files and WinEPS spool files; it only prevents logging after the option it enabled, and the settings are passed down to each lane.

In order to configure this option, follow the steps below:

- 1) Sign into WinEPS
- 2) Use the dropdown menus to navigate to Site Information | Processing Options



- 3) Click the checkbox next to the option "Do Not Retain Customer Name" as shown above.
- 4) Click save to Save your setting.
- 5) Stop and Restart WinEPS to cause the setting to take effect.
- 6) Sign on all lanes in order to ensure that they download the new setting; until the lanes have downloaded the new setting they will not prevent the recording of the customer name.

## Alternate ID / Frequent Shopper on Language Selection Screen

### New Option to place Alternate ID on the Language Selection Screen

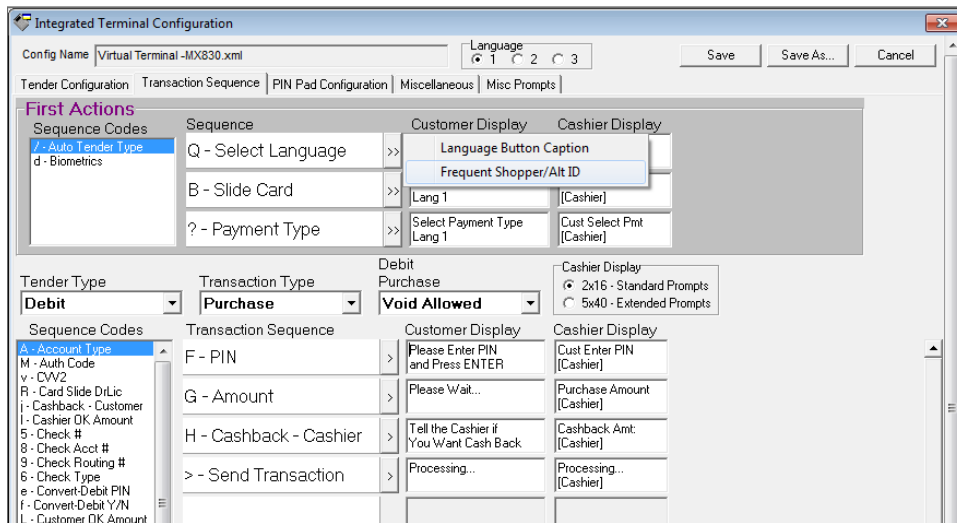
The Alternate ID / Frequent Shopper entry now has the option of being placed on the same screen that Language Selection is on.

This combined screen is available only for use with the MX terminals and requires updating the screen files to the latest provided with 828.0. All MX terminal screen files have been updated to use this new option, but not all MX terminals may support all aspects of this new functionality. Contact your account manager with the terminal type you are planning to use for the full information on the implementation of this option.

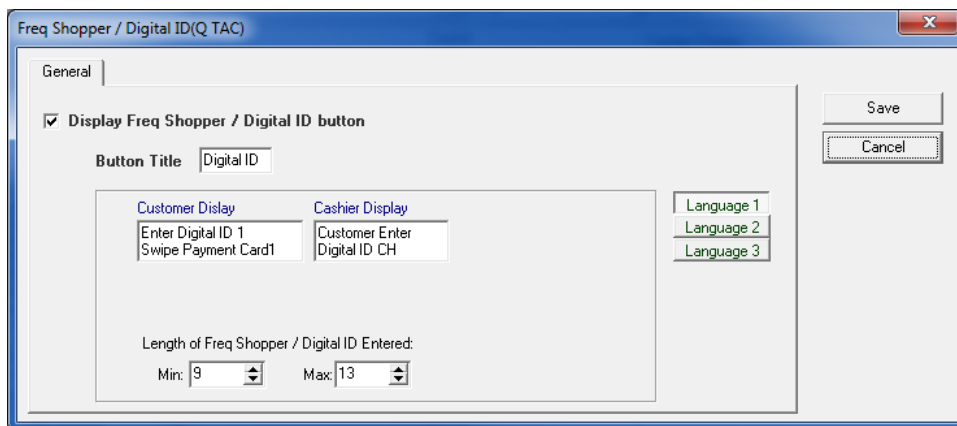
To set up Alt ID on the Select Language screen follow the steps below.

- 1) Click the OpenEPS Lanes button and select your terminal configuration.

- 2) Ensure that your terminal configuration contains the Q - Select Language TAC at the very top of the First Actions sequence as pictured below. If it is not there, then drag it from the unused sequence codes section to the top of the Sequence box.



- 3) Click the >> box to display the Q - Select Language TAC setup options and select the Frequent Shopper / Alt ID option.



- 4) Determine your display text, and enter it into the Customer Display and Cashier Display boxes. The customer display 2 lines of text will be shown on the Select Language screen under the two lines of text from the Customer Display section of the Select Language TAC. This gives the screen a total of 4 lines of customer text for display purposes.
- Use the Language 1/Language 2/Language 3 buttons on the right to set up the Customer Display text in alternate languages.
  - The Cashier Display on this screen is never shown or provided to the POS; only the Cashier text on the Select Language TAC is provided.
  - The Button Title is also not used in this implementation; there is no button to display the text on, as Frequent Shopper entry is available immediately through the keypad on this screen.

- 5) Set the minimum and maximum length of the Alternate ID / Frequent Shopper value the customer is to enter. The Min and Max may be the same value if the number entered is always the same length.
  - a. If both the Min and Max length are set to 10, the terminal will display the Alternate ID / Frequent Shopper entry as a phone number prompt.
- 6) Click Save to save your settings.

If the Q – Select Language TAC

---

## Contact Information

---



### **Retailix Global Payments**

85 Argonaut

Suite 150

Aliso Viejo CA, 92656

Tel: 949-614-1600

E-mail: [ConnectedSupport@retalix.com](mailto:ConnectedSupport@retalix.com)

Web site: <http://www.mtxeps.com/>

### **Retailix Ltd. Corporate Headquarters**

10 Zarhin Street

P.O. Box 2282

Ra'anana 43000, Israel

Tel.: +972 9 7766677

Fax: +972 9 7400471

### **Retailix USA Inc. Headquarters**

6100 Tennyson Parkway

Suite 150, Plano, TX 75024 USA

Tel.: +1 469 241 8400

E-mail: [info@retalix.com](mailto:info@retalix.com)

Web site: <http://www.retalix.com>