
WinEPS to ISS45 Integration Guide

ISS45 Version 8

October 2003



Copyright © 2003 MTXEPS

This publication is proprietary to MTXEPS and is intended solely for the contractual use of MTXEPS and its customers. This publication may not be reproduced or distributed for any other purpose without the written permission of MTXEPS

Notice

MTXEPS reserves the right to make changes to specification at any time and without notice. The information furnished by MTXEPS in this publication is believed to be accurate and reliable; however, no responsibility is assumed by MTXEPS for its use, nor for infringements of patents or other rights of third parties resulting from its use. No license is granted under any patents or patent rights owned by MTXEPS.

MTXEPS	Telephone: (949) 614-1600
85 Argonaut Suite 150	Fax: (949) 614-1650
Aliso Viejo, CA 92656	Help Desk: (949) 614-1616

Document History

Version	Action / Change	Date
1.0	Initial release	9/02
2.0	Version 8.4.3	3/03

*WinEPS to ISS45 Integration Guide
March 2003 • Revision 2.0
P/N WOADMN-809-WE*

Contents

Chapter 1

Introduction	1
What Is WinEPS Payments Application?	1
What is ISS45?	2
About This Guide	2
System Requirements	3
Recommended Hardware Requirements	3
Essential Software Requirements	3
<i>WinEPS Server</i>	3
<i>OpenEPS on Team POS 2000.</i>	3
<i>OpenEPS on Team 5000</i>	3

Chapter 2

Integrating WinEPS to ISS45 from the WinEPS Server	4
Terminal Configuration	4
Accessing the Terminal Configuration Screens	4
<i>Payment Terminal Configuration — Screen 1 of 5</i>	5
<i>Payment Terminal Configuration — Screen 2 of 5</i>	6
<i>Payment Terminal Configuration — Screen 3 of 5</i>	7
<i>Payment Terminal Configuration — Screen 4 of 5</i>	8
<i>Setup Configuration for OpenEPS — Screen 4.5 of 5</i>	9
<i>Payment Terminal Configuration — Screen 5 of 5</i>	10
Site Information	11
Accessing the Site Information Windows	11
<i>Lane Definitions</i>	12
<i>Processing Options — Payment Terminal Settings Tab</i>	13
<i>Processing Options — Other Tab</i>	14
<i>Host Processor Definition</i>	15
<i>Properties Host Parameters — Screen 1 of 3</i>	16
<i>Properties Host Parameters — Screen 2 of 3</i>	17
<i>Properties Host Parameters — Screen 3 of 3</i>	18

Chapter 3
Integrating WinEPS to ISS45 From the ISS45
Back Office Application ----- 19

Preliminary File Settings ----- 19
 Extracting the Proper Files ----- 19

Accessing the Post Configuration Menu ----- 21
POST Configuration –Auth –EFT – I/F Tab ----- 22
Accessing the Tender Types Menu ----- 23
Tender Types — Check Tender Setup Tab ----- 25
Tender Types — Check General Parameters Tab ----- 26
Tender Types — Check Specific 1 Tab ----- 27
Tender Types — Check EPS – EFT Tab ----- 28
Tender Types — Credit----- 29
Tender Types — Credit Tender Setup Tab ----- 30
Tender Types — Credit General Parameters Tab ----- 31
Tender Types — Credit Specific 1 Tab ----- 32
Tender Types — EBT Food Stamps ----- 33
Tender Types — EBT Food Stamps Tender Setup Tab ----- 34
Tender Types — EBT Food Stamps General Parameters Tab ----- 35
Tender Types — EBT Food Stamps Specific 1 Tab ----- 36
Tender Types — EBT Food Stamps EPS-EFT Tab ----- 37
Tender Types — EBT Cash ----- 38
Tender Types — EBT Cash Tender Setup Tab ----- 39
Tender Types — EBT Cash General Parameters Tab ----- 40
Tender Types — EBT Cash Specific 1 Tab ----- 41
Tender Types — EBT Cash EPS-EFT Tab ----- 42
Tender Types — Debit ----- 43
Tender Types — Debit Tender Setup Tab ----- 44
Tender Types — Debit General Parameters Tab ----- 45
Tender Types — Debit Specific 1 Tab ----- 46
Tender Types — Debit EPS-EFT Tab ----- 47
Tender Types — Gift Card ----- 48
Tender Types — Gift Card Tender Setup Tab ----- 49
Tender Types — Gift Card General Parameters Tab ----- 50
Tender Types — Gift Card Specific 1 Tab ----- 51
Tender Types — Gift Card EPS-EFT Tab ----- 52
Accessing the Card Range Maintenance Menu ----- 53
Card Range Maintenance ----- 55

Chapter 4
SCAT Code ----- 56

Loading SCAT Code----- 57
Loading SCAT Code on the ICE6000 Terminal ----- 57
Extracting SCAT-ICE6K v0079 Port3.zip ----- 57
Launching Stream Loader ----- 57
Initializing the ICE Terminal ----- 58
Loading the SCAT Code onto the ICE6000 ----- 58
Downloading Screen Files ----- 58



Loading SCAT Code on the ICE5500P Terminal	59
<i>Extracting SCAT-5500p v0079.zip</i>	59
<i>Launching Stream Loader</i>	59
<i>Initializing the ICE Terminal</i>	60
<i>Loading the SCAT Code onto the ICE5500P</i>	60
<i>Downloading Screen Files</i>	60
Loading SCAT Code on the OMNI 490 Terminal	61
<i>Extracting OMNI 490 v0026.zip</i>	61
<i>Initializing the OMNI 490 Terminal</i>	61
<i>Loading the SCAT Code onto the OMNI 490</i>	61
Loading SCAT Code on the OMNI 7000 Terminal	62
<i>Extracting OMNI 7000 vXX.zip</i>	62
<i>Initializing the OMNI 7000 Terminal</i>	62
<i>Loading the SCAT Code onto the OMNI 7000</i>	62
Loading SCAT Code on the IVI C2000 Terminal	63
<i>Extracting C2k v0011.zip</i>	63
<i>Initializing the C2000 Terminal</i>	63
<i>Loading the SCAT Code onto the IVI C2000</i>	63
Loading SCAT Code on the Everest or Everest+ Terminal	64
<i>Extracting Everest v007.zip</i>	64
<i>Initializing the Everest or Everest+ Terminal</i>	64
<i>Loading the SCAT Code onto the Everest or Everest+ Terminal</i>	64
 List of Figures	 65

Chapter 1

Introduction

What Is WinEPS Payments Application?

The WINEPS Payments application includes WINEPS Server (back-end software) and OpenEPS (front-end software), which gives you the power to manage, track, and complete sales transactions easily and quickly, providing your customers with a more pleasant shopping experience.

The application provides electronic payment options that range from Debit and Credit transactions to EBT and many forms of check authorization. Additionally, you can extend Frequent Shopper programs as well as Gift Card transactions depending on the host or payments authorization company.

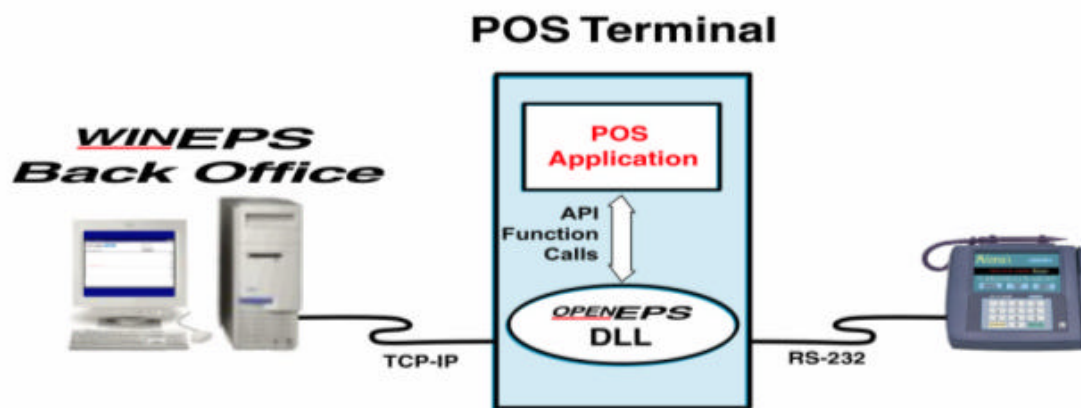


Figure 1.1 – Overview of WinEPS Payment Application

What is ISS45?

ISS45 is a Point-of-Sales (POS) software installed on the cashier's register and is built on industry standard platforms and released to supermarket businesses with installations worldwide.

About This Guide

The WinEPS to ISS45 Integration Guide is aimed for the WinEPS system administrators. These administrators are store personnel who are responsible for changing configurations, printing and/or viewing reports, downloading lanes, etc.

This guide assumes that you have properly installed WinEPS Sever, OpenEPS, and ISS45 version 8.4.3 or higher. Additionally, you should have proper training or experience with WinEPS and ISS45.

Before you begin, be sure to read this guide for details on specific screens, instructions on specific configurations, and other useful information.



*Before you begin checking your configurations for the WinEPS to ISS45 integration, **Save and Exit** (with the exception of WinEPS and ISS45) out of all applications currently running.*

System Requirements

Before you begin, review the following hardware and software requirements:

Recommended Hardware

- Pentium microprocessor, PII 266 or higher
- VGA, or higher, resolution monitor set at 800 x 600 or better
- At least 500 MB free disk space on your C:\ drive
- CD-ROM drive
- 64 MB RAM minimum
- Ethernet Card

Essential Software Requirements

WinEPS Server

Any of the following:

- Microsoft Windows NT 4.0 (Workstation: Client) with Service Pack 5 or higher
- Microsoft Windows 2000
- Microsoft Windows XP
- TCP/IP Protocol Installed

OpenEPS on Team POS 2000

- Microsoft Windows 2000
- TCP/IP and Net BEUI Protocols Installed

OpenEPS on Team 5000

- Microsoft Windows NT 4.0 (Workstation: Client) with Service Pack 6
- TCP/IP and Net BEUI Protocols Installed

Chapter 2

Integrating WinEPS to ISS45 From the WinEPS Server

This chapter guides you through various WinEPS screens and highlights the optimal settings for your WinEPS to ISS45 integration.

The concepts in this chapter assume you have:

- Installed WinEPS
- Logged on to WinEPS

Terminal Configuration

The Terminal Configuration screens define the functionality of the payment terminals. A total of five Terminal Configuration screens allow you to define the properties of specific configurations.

Accessing the Terminal Configuration Screens

To access the Terminal Configuration screens, from the **Configuration** menu, select **Terminal Configuration**. This displays **Terminal Configuration Screen 1**.

Payment Terminal Configuration — Screen 1 of 5

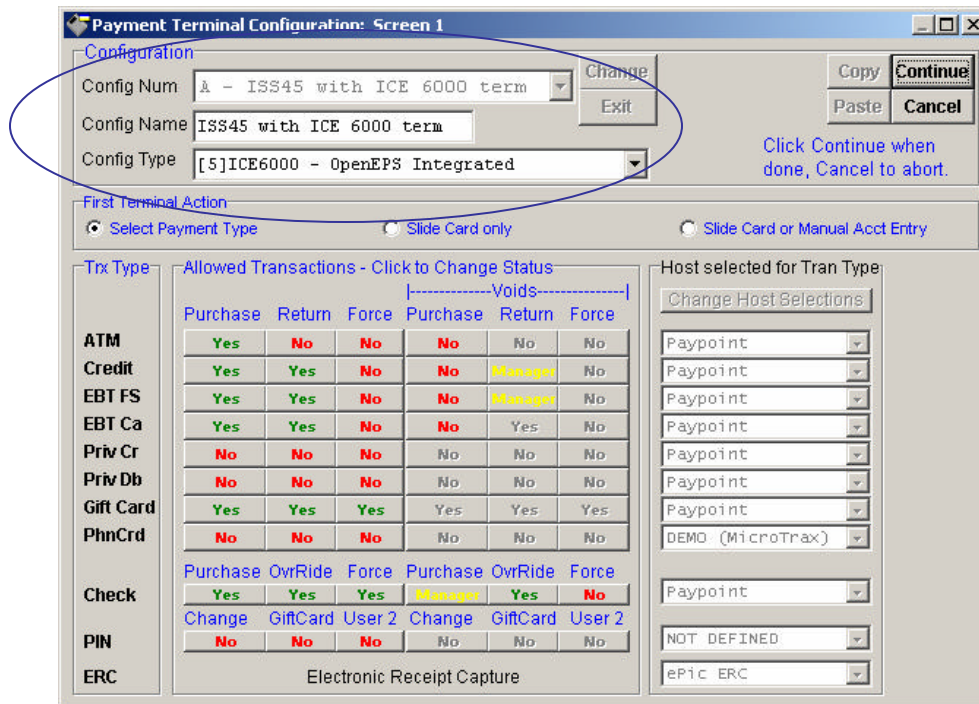


Figure 2.1: Payment Terminal Configuration Screen 1

While in Terminal Configuration: Screen 1, you can edit, copy, and paste by scrolling for a specific configuration and clicking the corresponding button. For example, you can copy and paste your configuration while still in ISS45 to a new terminal such as an Everest terminal.

The defaults for Configuration A - ICE6000, Configuration B - ICE5500, and Configuration C - Omni490 are set once you install WinEPS from the CD. The examples in the following screen shots display Configuration A. You can substitute either of these configurations accordingly.

For the WinEPS to ISS45 integration setup, use the following configuration properties:

Property	Description
Configuration Num	A - ISS45 W/ ICE 6000.
Configuration Name	ISS45 W/ ICE 6000.
Configuration Type	[5]ICE6000 - OpenEPS Integrated.

Payment Terminal Configuration — Screen 2 of 5

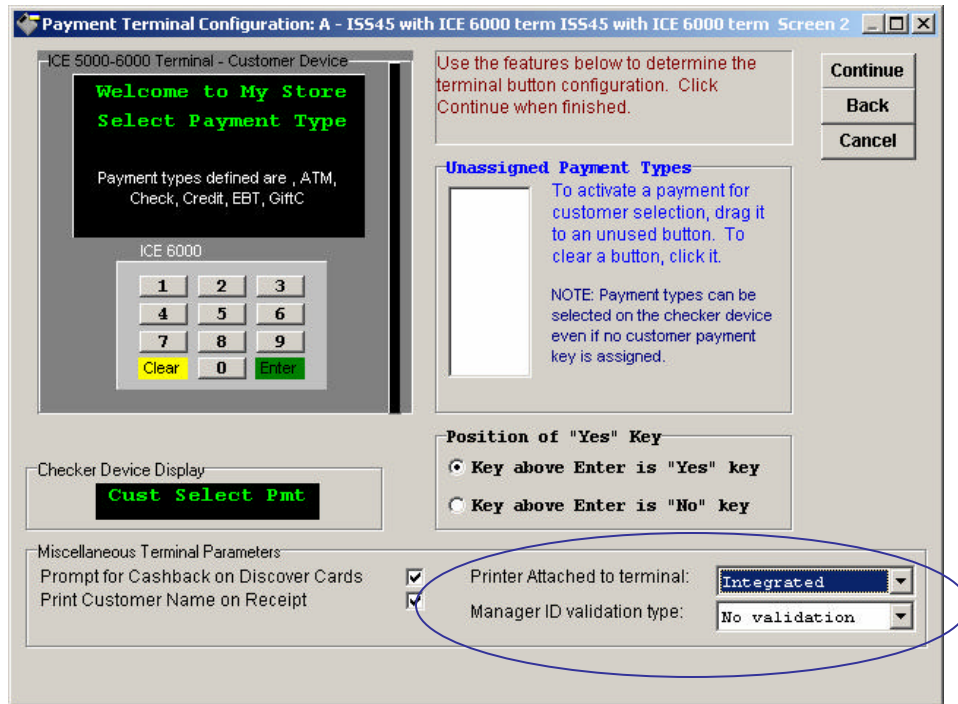


Figure 2.2: Payment Terminal Configuration Screen 2

For the WinEPS to ISS45 integration setup, use the following configuration properties:

Property	Description
Printer Attached to Terminal	Integrated.
Manager ID validation type	No validation.

The WinEPS to ISS45 integration does not affect the Unassigned Payment Types portion of Screen 2. You can still assign a payment type to a key on the Customer Device. Simply select the payment type, then drag and drop on the button of choice located on the Customer Device. To edit the assigned button, select the button, drag and drop the payment type back to the Unassigned Payment Types list.



Note: This does not apply to touch screen terminals such as the ICE6000.

Payment Terminal Configuration — Screen 3 of 5

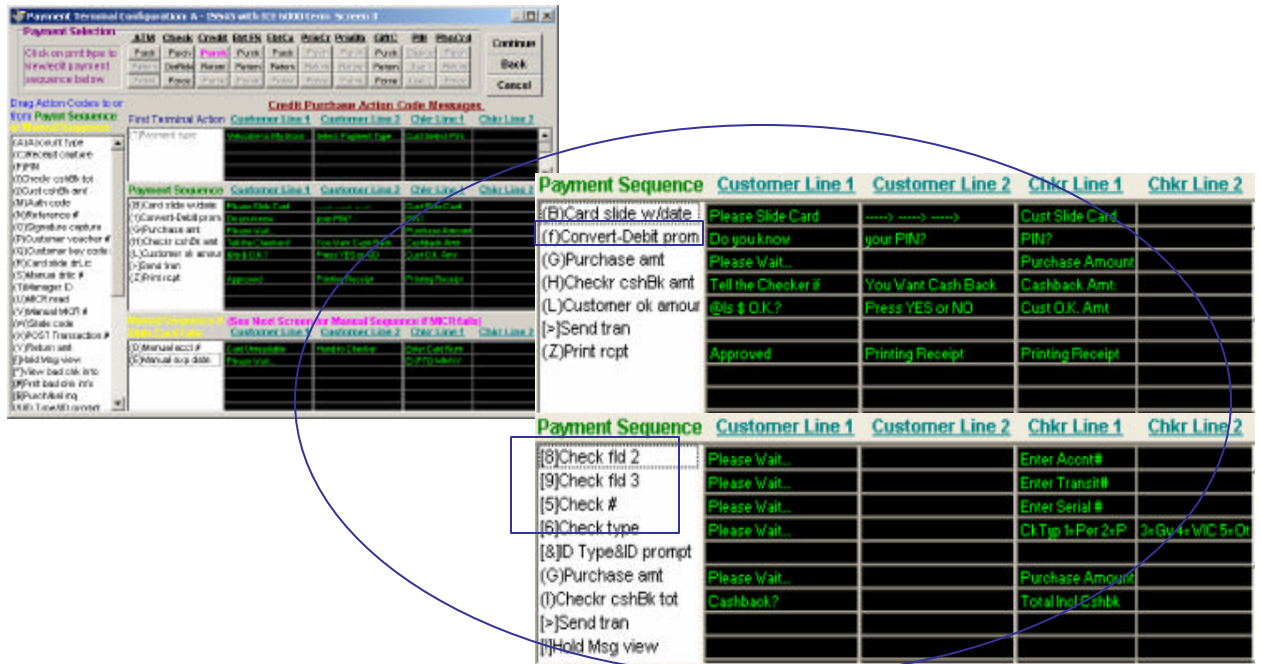


Figure 2.3: Payment Terminal Configuration Screen 3

For the WinEPS to ISS45 integration setup, use the following configuration properties:

Property	Description
(f)Convert-Debit prom This TAC is Optional.	Must use for Credit-to-Debit conversion; the Terminal Action Code (TAC) is “f”.
[8]Check fld 2	Must use the default for integrated check reading. The code also indicates the check reader is attached to an integrated printer.
[9]Check fld 3	Must use the default for integrated check reading. The code also indicates the check reader is attached to an integrated printer.
[5]Check #	Must use the default for integrated check reading. The code also indicates the check reader is attached to an integrated printer.



Note: Changes to Terminal Configuration Screen 3 will not take effect until you continue through all screens and click the Finish button on Terminal Configuration Screen 5. Afterwards, you must perform a “Stop and Start” of all lanes, which causes a parameter download to all lanes. The estimated time is four minutes per lane.



Note: For all other transaction types, use the default setting for ISS45.

Payment Terminal Configuration — Screen 4 of 5

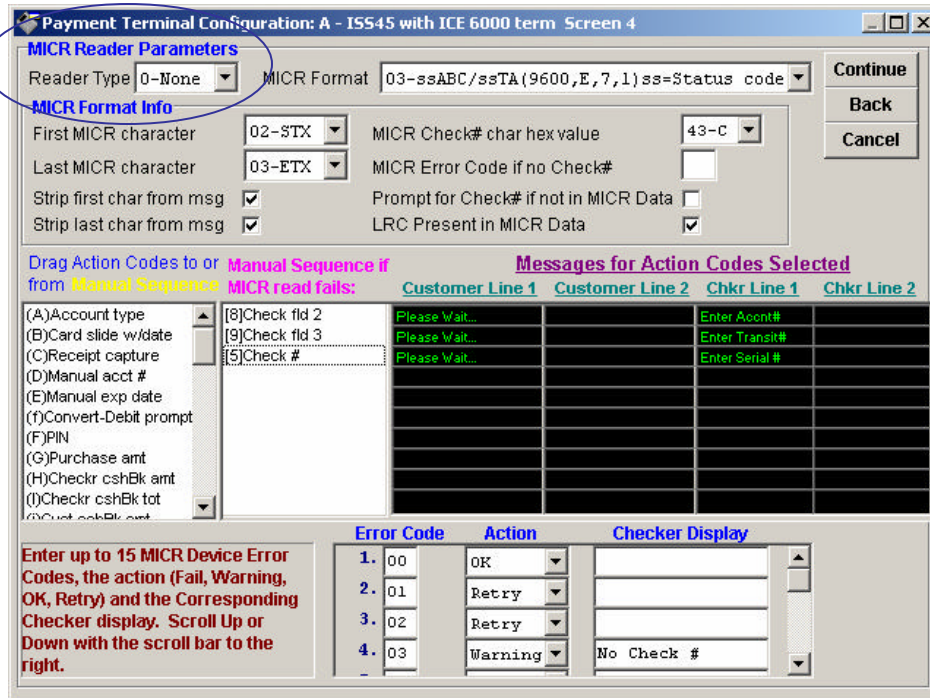


Figure 2.4: Payment Terminal Configuration Screen 4

If using the integrated MICR reader on the register printer use the following:

Property	Description
MICR Reader Parameters: Reader Type	0-None.



Note: IVI Check Readers can be used in conjunction with the Customer Terminal. To setup this configuration, please contact the WinEPS Help Desk.

Setup Configuration for OpenEPS — Screen 4.5 of 5

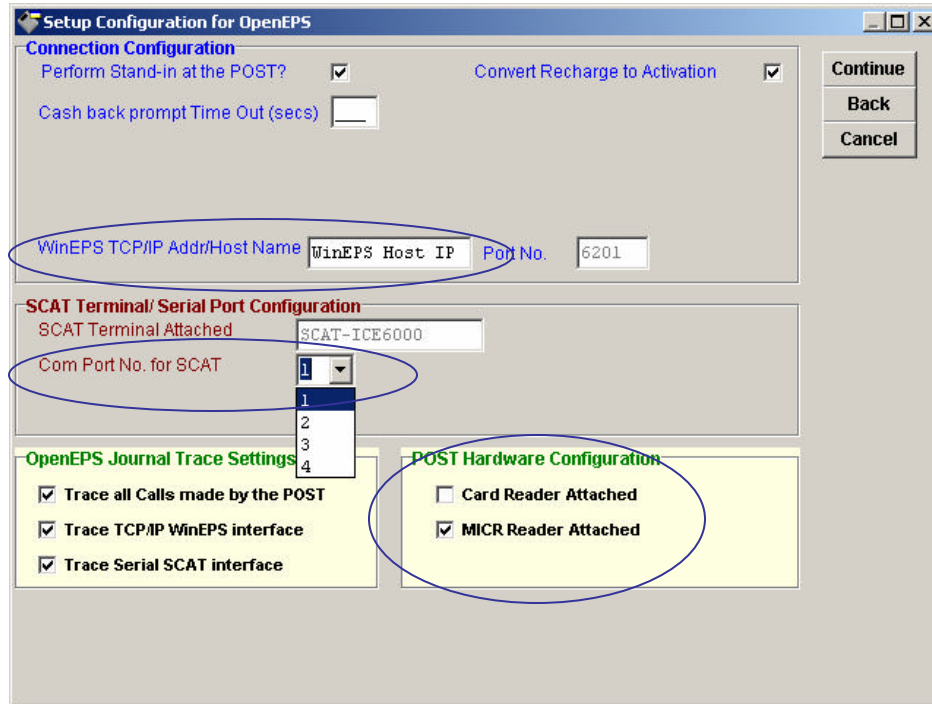


Figure 2.5: Setup Configuration for OpenEPS

For the WinEPS to ISS45 integration setup, use the following configuration properties:

Property	Description
WinEPS TCP/IP Host Name	WinEPS Host IP; this is the actual address of the WinEPS PC.
Com Port No. for SCAT	[1] Corresponds to the COM port on the register to which the SCAT terminal is attached.
Card Reader Attached	Leave this property unchecked.
MICR Reader Attached	Check this property if using integrated MICR.

Payment Terminal Configuration — Screen 5 of 5

Figure 2.6: Payment Terminal Configuration Screen 5

For the WinEPS to ISS45 integration setup, use the following configuration properties:

Property	Description
Check Processing Type: Personal	The default for the Second ID Required? checkbox is unchecked. With this checkbox left unchecked, WinEPS only requests a second form of identification if the account number does not exist in the host database. If you choose to check this box, WinEPS asks for a second form of identification for every personal check transaction.



*Note: Be sure to click **Finish**, and then perform a **Stop and Start** on the lanes for the changes to take affect.*

Site Information

The Site Information menu allows you to add, edit, or delete the properties of store operators, store managers, checkers, and lanes. Additionally, you can customize receipt and reporting information along with host processor and processing options.

For the WinEPS to ISS45 integration, we will focus on the following items:

- Lane Definition
- Processing Options
- Host Processor Definition

Accessing the Site Information Windows

To access the Site Information windows, from the **Site Information** menu, select **Lane Definition**, **Processing Options**, or **Host Processor Definition**.

Lane Definitions

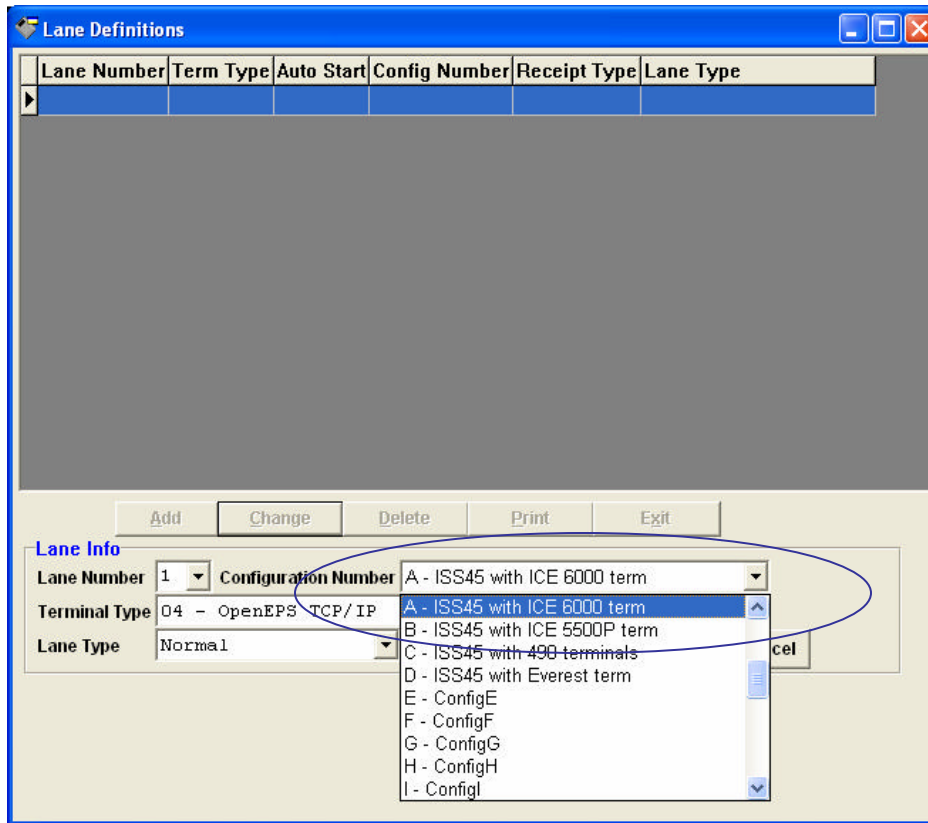


Figure 2.7: Lane Definitions

For the WinEPS to ISS45 integration setup, use the following configuration properties:

Property	Description
Configuration Number	A - ISS45 W/ ICE 6000.
Configuration Number	B - ISS45 W/ ICE 5500.
Configuration Number	C - ISS45 W/ OMNI 490.

Since it is up to you to define your own lanes, no defaults are set for this screen and you must set your own lane definitions. You can update the properties of these lanes or add a new lane by clicking **Add** or **Change**. To change an existing Lane Definition, select the appropriate row and click **Change**. To delete a Lane Definition, select the appropriate row and click **Delete**.



Note: All lanes that process payments through WinEPS must be defined on the Lane Definitions screen.

Processing Options — Payment Terminal Settings Tab

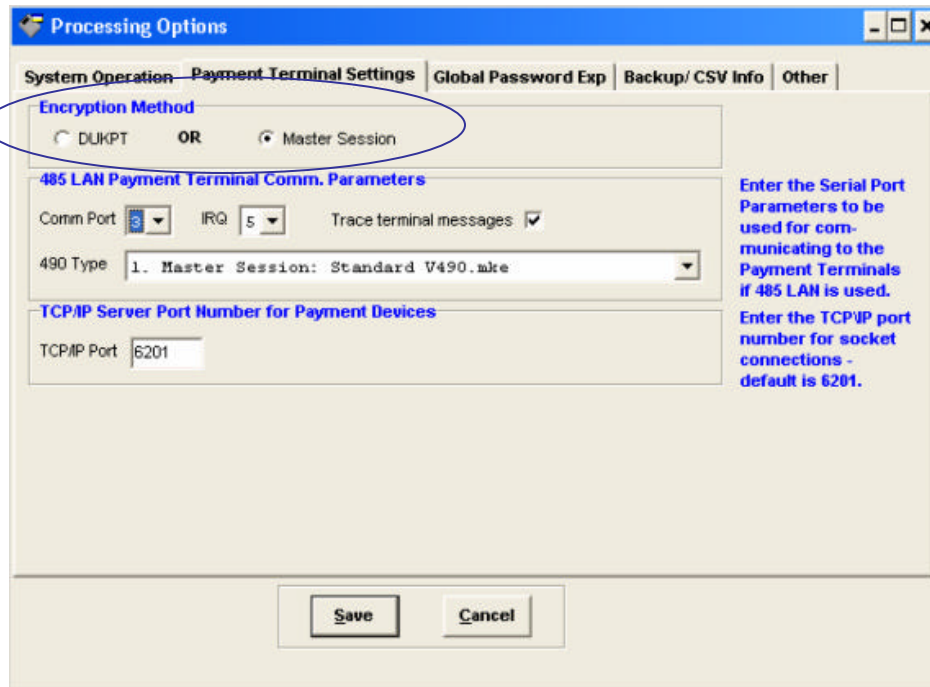


Figure 2.8: Payment Terminal Settings Tab

The Processing Options screen allows you to setup system operations, payment terminal settings, passwords, backup file options, FTP Server, online and offline information. For the purposes of the WinEPS to ISS45 integration, we will focus on the **Payment Terminal Settings** tab and the **Other** tab.

For the WinEPS to ISS45 integration setup, use the following configuration properties:

Property	Description
Encryption Method	You can choose either DUKPT or Master Session. This depends on the agreement with your host.

Processing Options — Other Tab

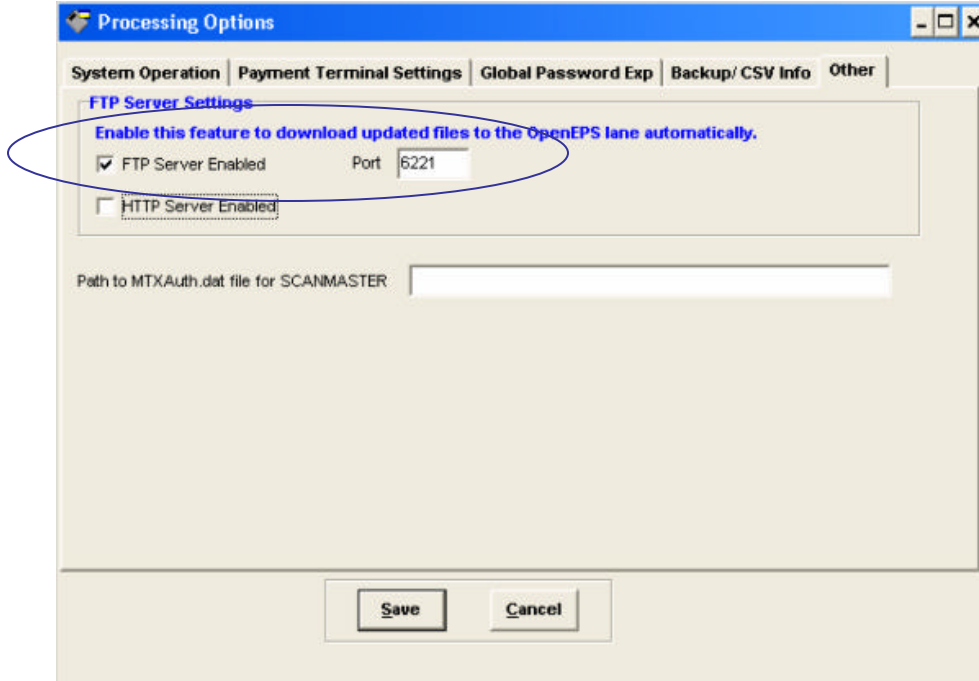


Figure 2.9: Other Tab

For the WinEPS to ISS45 integration setup, use the following configuration properties:

Property	Description
FTP Server Enabled	Check this option.
Port	If Port 6221 is used by the post, then you can change the port number.

Host Processor Definition

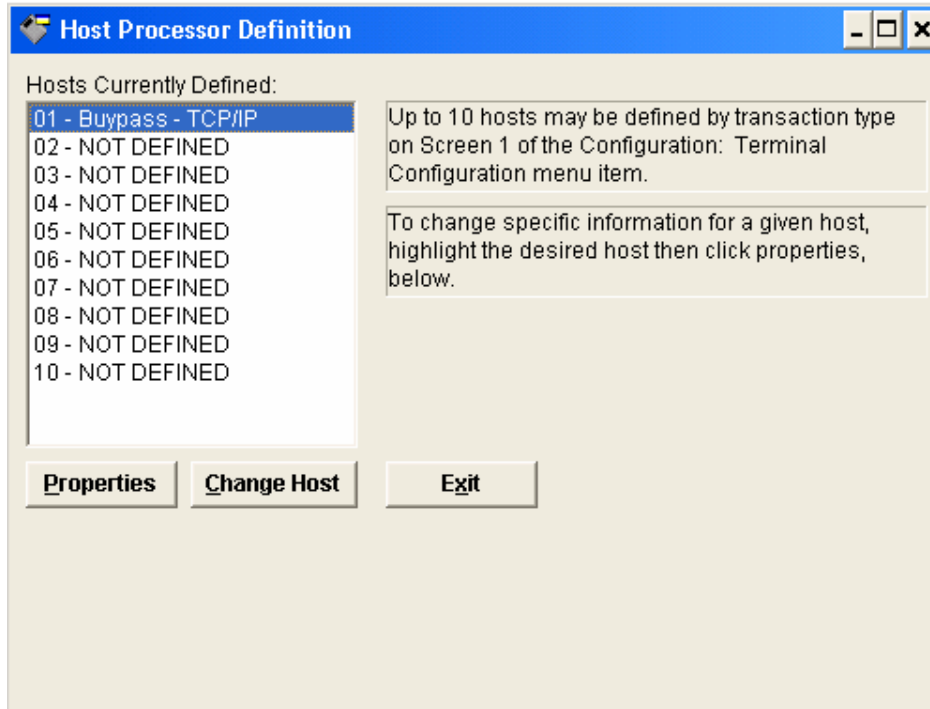


Figure 2.10: Host Processor Definition

The Host Processor Definitions are host related information, assigned by your host, such as Bypass and Paypoint. However, for detailed information on a specific host property, select the appropriate host and click **Properties**. This displays the **Host Parameters** screen.

Properties Host Parameters — Screen 1 of 3

Figure 2.11: Host Parameters Screen 1

For the WinEPS to ISS45 integration setup, use the following configuration properties:

Property	Description
Communication Type	Communication Type Determined by your host.
Merchant Number	Determined by your host.
Terminal Number	Determined by your host.
Numeric State Code	Determined by your host.
Password	Determined by your host.
Hours added to local time to get host time	The resultant number is equivalent to your host's time zone.
Online Processing: Trace Host Messages to Journal	Select this option.
Offline Processing: Offline Processing Allowed?	Select this option if allowing offline approval.
Offline Processing: Resubmit Offline Forwards?	Select this option if allowing offline approval.



Note: Host Parameters screens will differ from host to host.

Properties Host Parameters — Screen 2 of 3

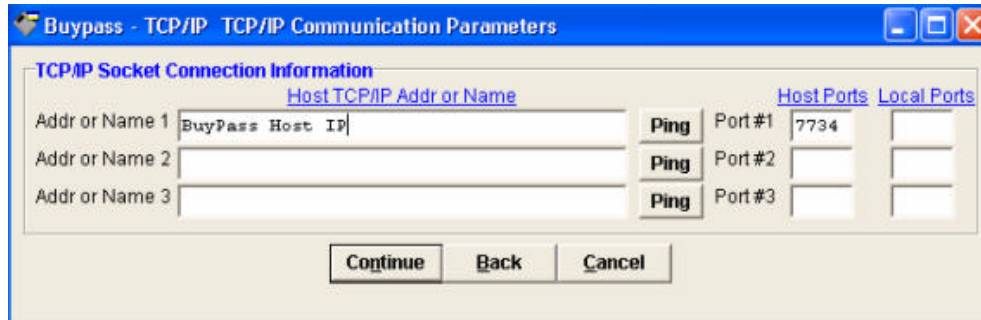


Figure 2.12: Host Parameters Screen 2

For the WinEPS to ISS45 integration setup, use the following configuration properties:

Property	Description
IP Address	Assigned by host.
Port Number	Assigned by host.

Properties Host Parameters — Screen 3 of 3

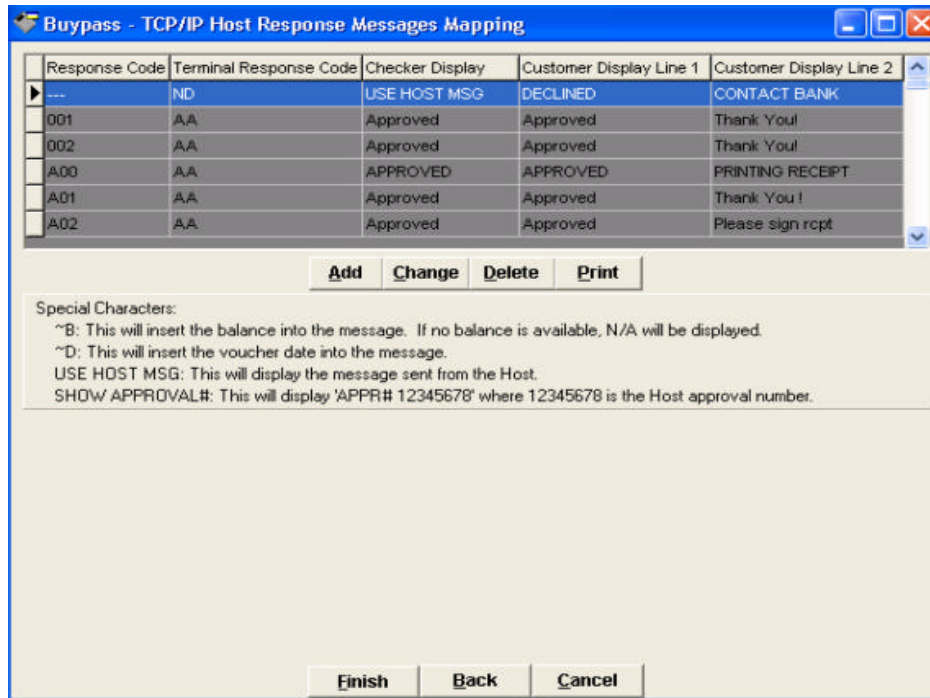


Figure 2.13: Host Parameters Screen 3

Displayed is the Host Response Message screen. No modifications are necessary. To save your changes click **Finish**.

Chapter 3

Integrating WinEPS to ISS45 From the ISS45 Back Office Application

This chapter guides you through various screens on MFS 1, ISS45 Back Office Application and highlights the optimal settings for your WinEPS to ISS45 integration. These are general recommendations and the actual screen entries may vary from site-to-site depending on the configuration of the WinEPS system. For additional ISS45 setup information, contact your ICL Dealer.

The concepts in this chapter assume you have:

- Installed POS Lane Software ISS45
- Installed WinEPS
- Installed Back Office Software

Preliminary File Settings

Prior to verifying the screen configurations for the integration, several files must be on the **POSTS** before ISS45 can properly function with WinEPS.

Extracting the Proper Files

1. From the **Installation CD** browse **OpenEPS \ OpenEPS Installation for ISS45 \ OpenEPS version#.zip** (this version number will vary depending on the version being used), extract the zip file's contents to a floppy disk.
2. From your floppy disk that contains the extracted files, open **Setup.txt**.
3. From **Setup.txt**, edit the following line below. The result of `CTCPREMOTEEADDR1` should be the IP Address of your WinEPS Server.

```
CTCPREMOTEEADDR1=[IP Address of WinEPS Sever]
```
4. Take the floppy disk that contains the extracted files to a lane.
5. From the floppy disk, double-click **Install.bat**.

This will automatically create the following directory structure, c:\program files\microtrax\openeps. Additionally, Install.bat will copy mtx_eps.dll and mtx_pos.dll into the appropriate directories.



Note: You must perform steps 4 and 5 on each individual lane to create the proper directory structure and extract the appropriate DLLs.

Accessing the Post Configuration Menu

1. From the **Main Menu**, go to System administration\POS Setup\POS Configuration\POS Configuration.

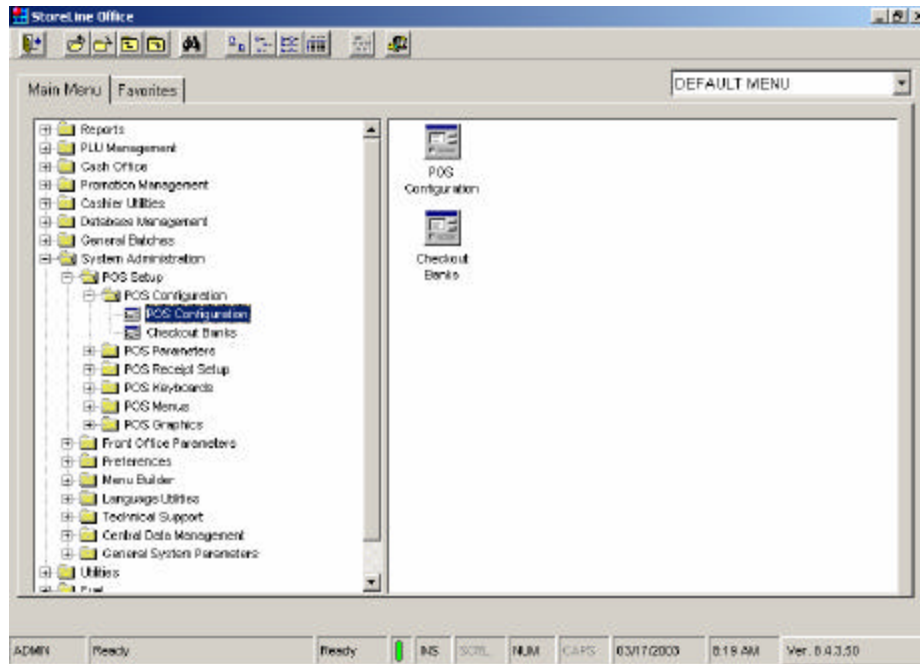


Figure 3.1: Systems Parameters Main Menu

2. Click on **POS Configuration** to display a list of all used ISS45 lanes.

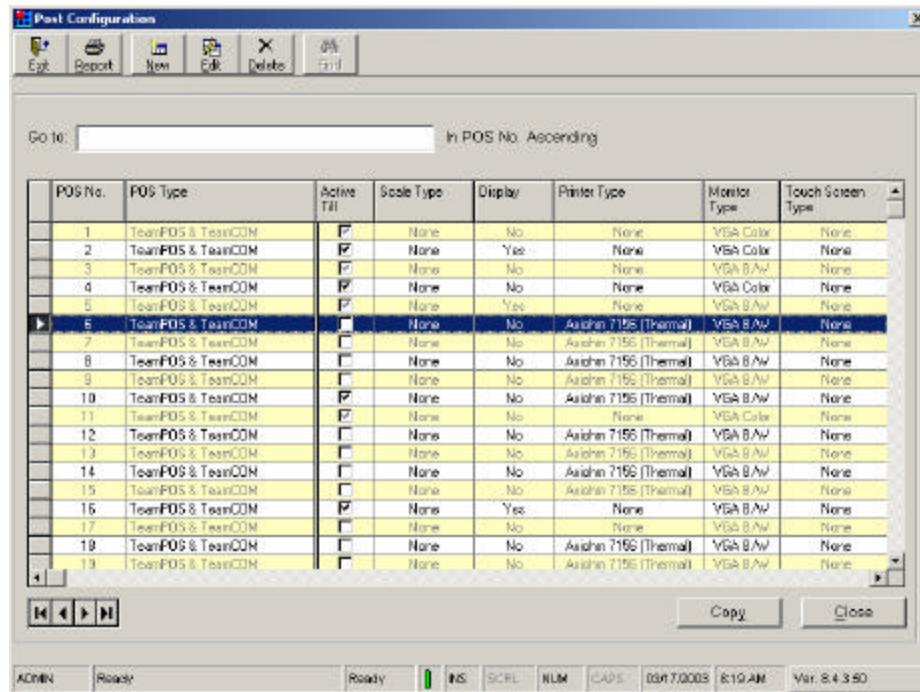


Figure 3.2: POST Configuration Menu

- From the **POST Configuration** menu, select a **lane** and double click to display the lane configuration.

POST Configuration — Auth. – EFT – I/F Tab

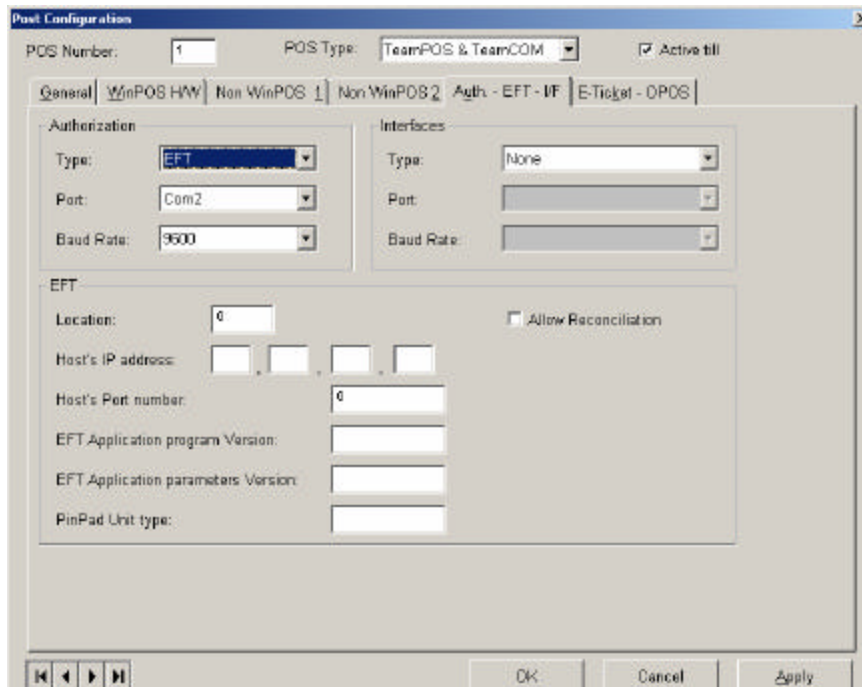


Figure 3.3: POST Configuration

For the WinEPS to ISS45 integration setup, click **Auth – EFT – I/F Tab** and set the properties to the following values:

Property	Description
Authorization: Type	EFT
Authorization: Port	Select the com port on the ISS45 to which the PIN Pad is attached.
Authorization: Baud Rate	[9600]



Note: You must set all lanes with this configuration.

Accessing the Tender Types Menu

1. From the **Main Menu**, go to **Database Management\Financial\Tender Maintenance**.
This displays the File Maintenance menu.

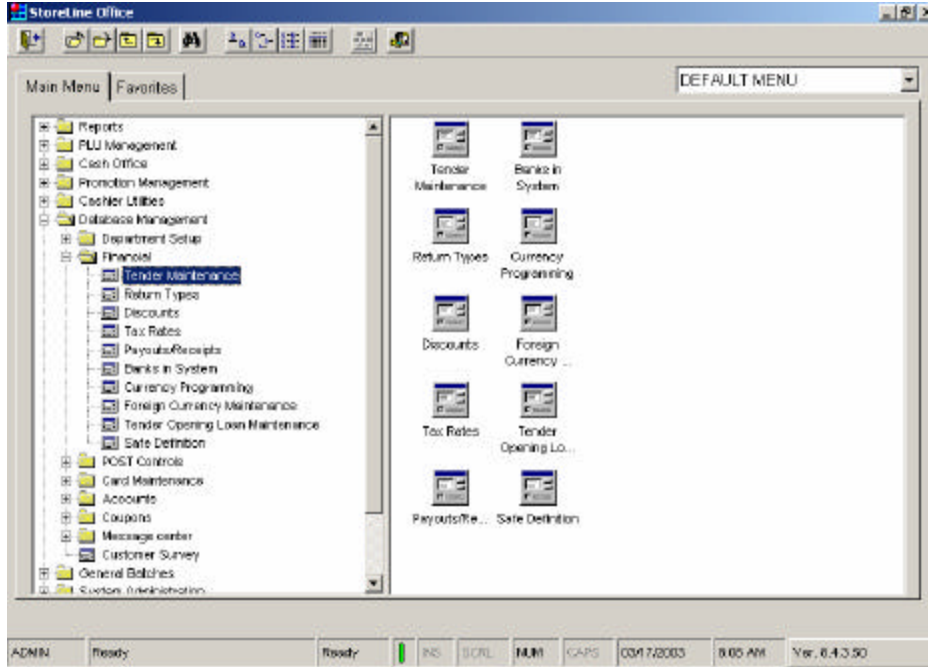


Figure 3.4: Tender Maintenance

2. Double click on **Tender Maintenance** to access **Tender Types**.
This displays the Tender Types window.

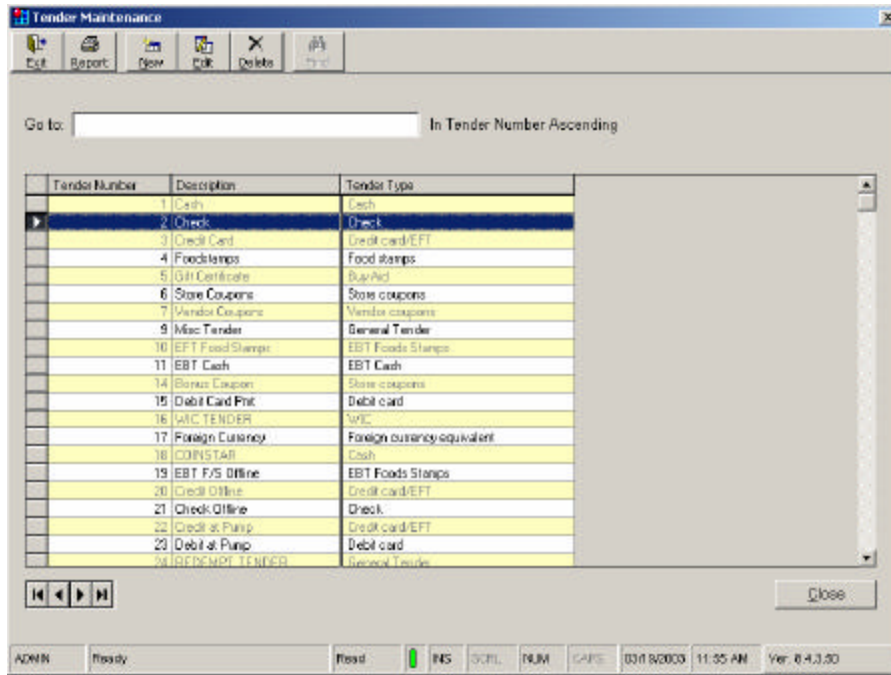


Figure 3.5: Tender Types - Check

3. Double click on **Tender Type - Check** .

Tender Types — Check Tender Setup Tab

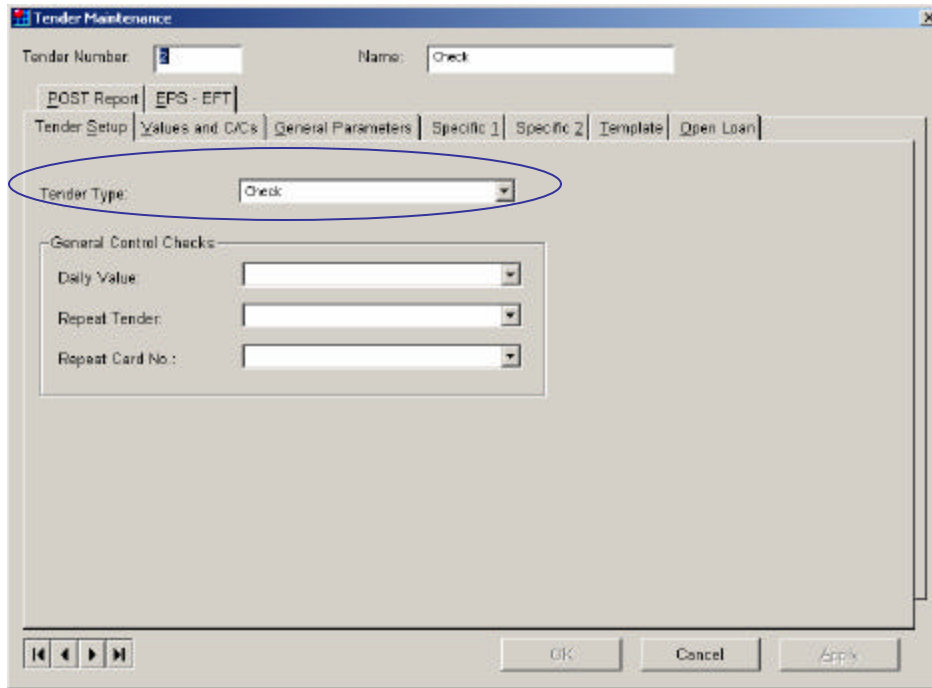


Figure 3.6: Check Screen Tender Setup

For the WinEPS to ISS45 integration setup, use the following configuration properties:

Property	Description
Type of Tender	Check.

Tender Types — Check General Parameters Tab

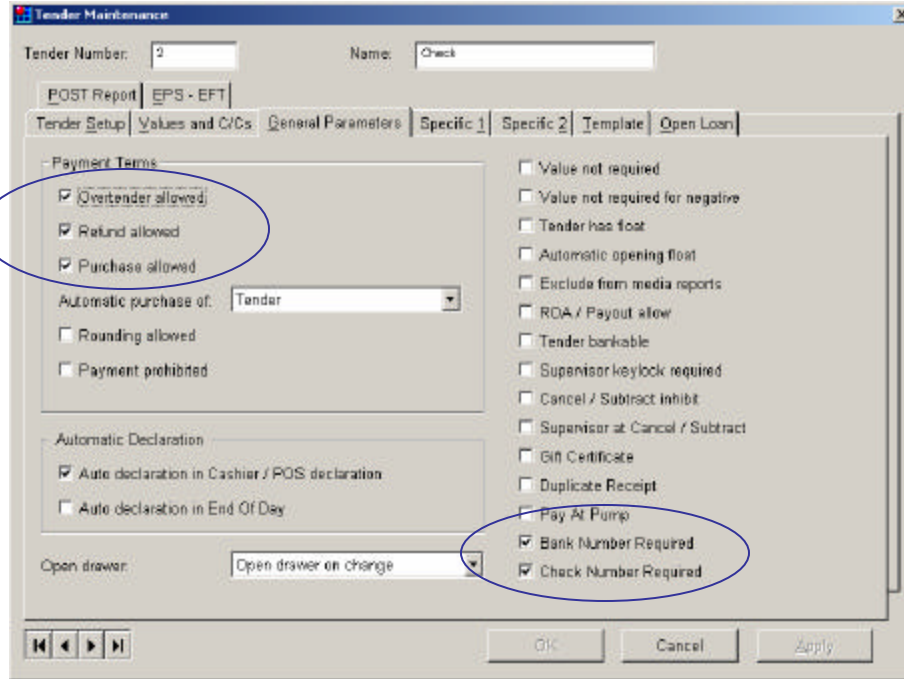


Figure 3.7: Check Screen General Parameters

For the WinEPS to ISS45 integration setup, use the following configuration properties:

Property	Description
Check number required	Select checkbox.
Bank number is required	Select checkbox.
Overtender allowed	Select checkbox.
Refund allowed	Select checkbox.
Purchase allowed	Select checkbox.

Tender Types — Check Specific 1 Tab

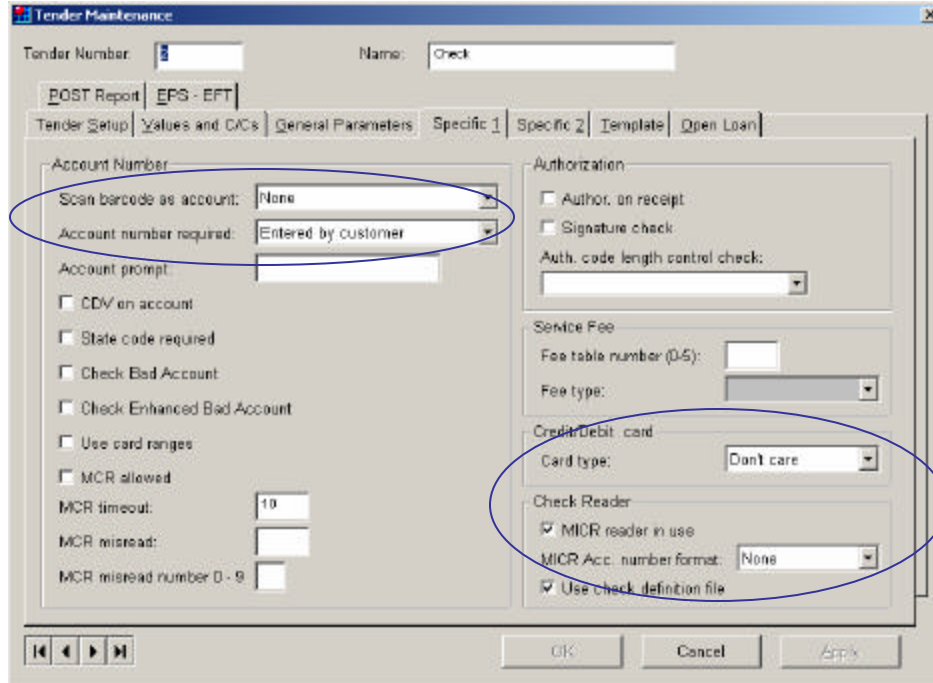


Figure 3.8: Check Screen Specific 1

For the WinEPS to ISS45 integration setup, use the following configuration properties:

Property	Description
MICR reader in use	Select the checkbox if using integrated MICR.
Scan barcode as account	None
Account number required	Entered by customer.
Card type	Don't care
MICR Acc. number format	None

Tender Types — Check EPS–EFT Tab

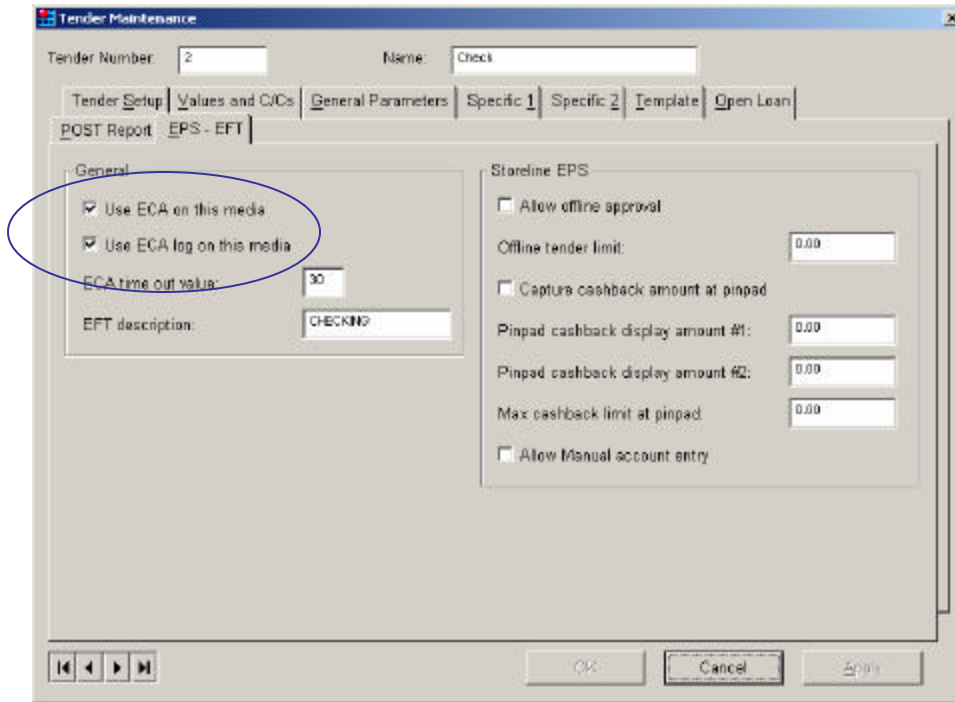


Figure 3.9: Check Screen EPS-EFT

For the WinEPS to ISS45 integration setup, use the following configuration properties:

Property	Description
Use ECA on this media	Select the checkbox.
Use ECA log on this media	Select the checkbox.

Tender Types — Credit

From the Tender Maintenance Screen double click on Tender Type – Credit.

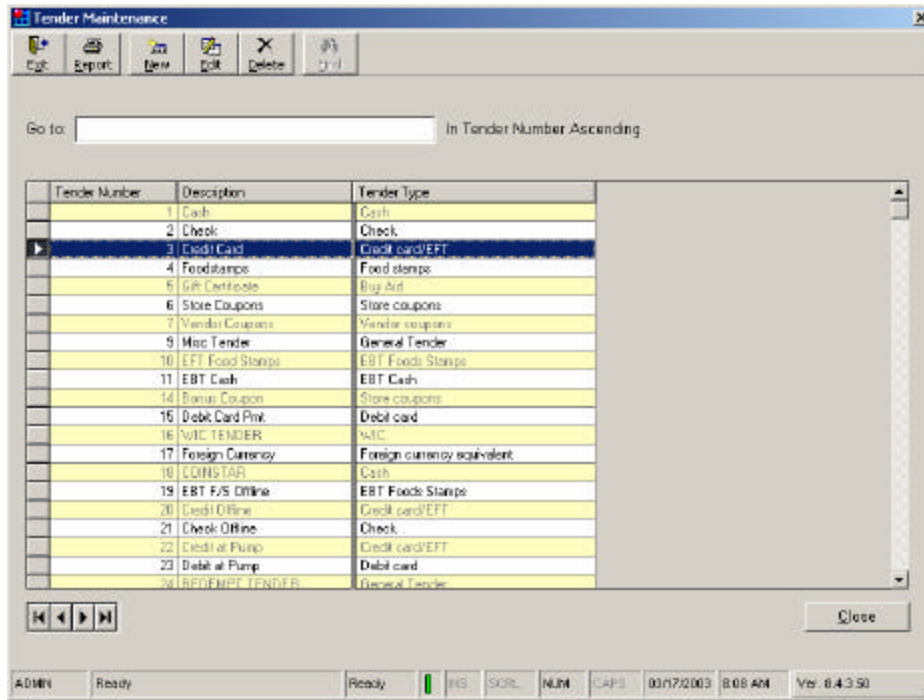


Figure 3.10: Tender Types - Credit

Tender Types — Credit Tender Setup Tab

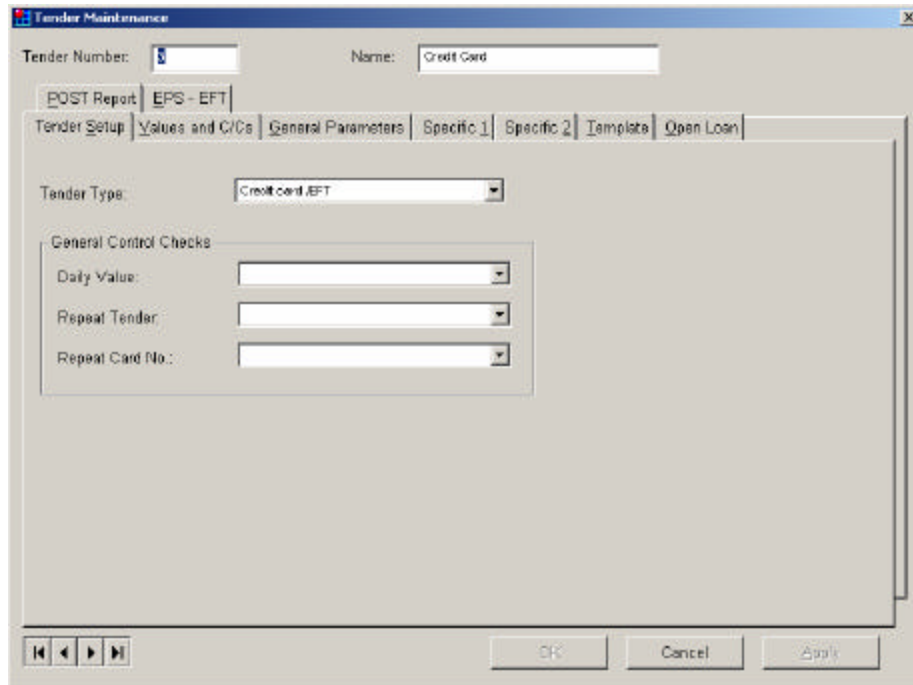


Figure 3.11: Credit Screen Tender Setup

For the WinEPS to ISS45 integration setup, use the following configuration properties:

Property	Description
Type of Tender	Credit card /EFT.

Tender Types — Credit General Parameters Tab

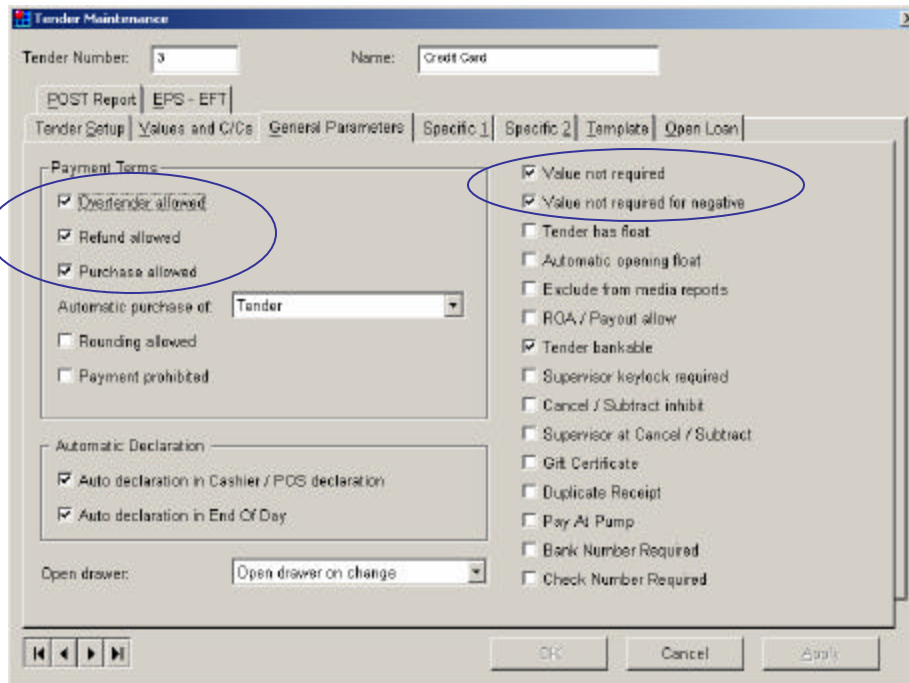


Figure 3.12: Credit Screen General Parameters

For the WinEPS to ISS45 integration setup, use the following configuration properties:

Property	Description
Overtender allowed	Select checkbox.
Refund allowed	Select checkbox.
Purchase allowed	Select checkbox.
Value not required	Select checkbox.
Value not required for negative	Select checkbox.



Note: Leave all other the properties set at the default values.

Tender Types — Credit Specific 1 Tab

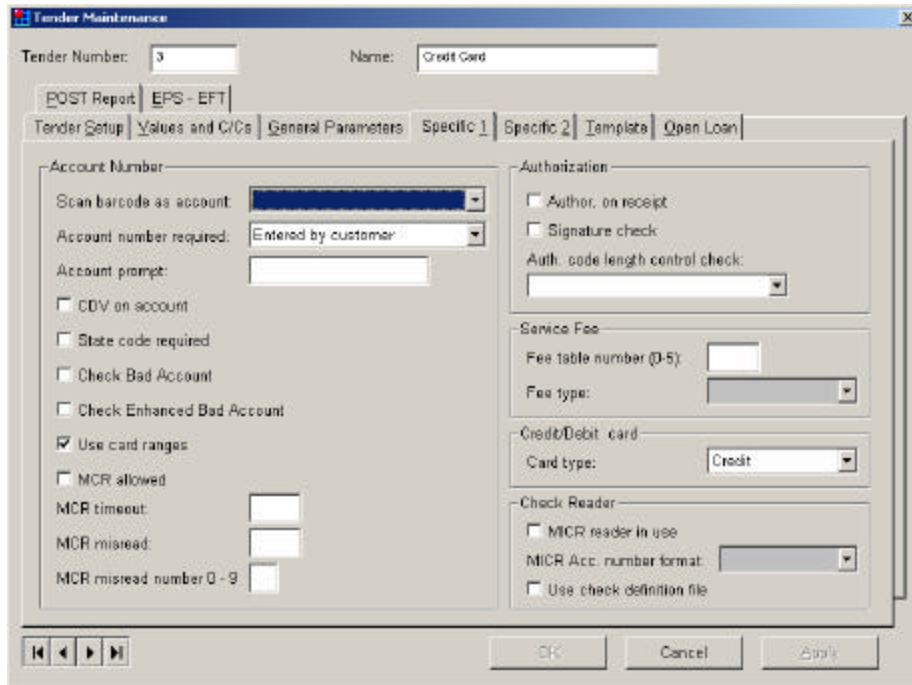


Figure 3.13: Credit Screen Specific 1

For the WinEPS to ISS45 integration setup, use the following configuration properties:

Property	Description
Account number required	Entered by customer.
Use card ranges	Select checkbox.
Card type	Credit

Tender Types — EBT Food Stamps

From the Tender Maintenance Screen double click on Tender Type – EBT Food Stamps.

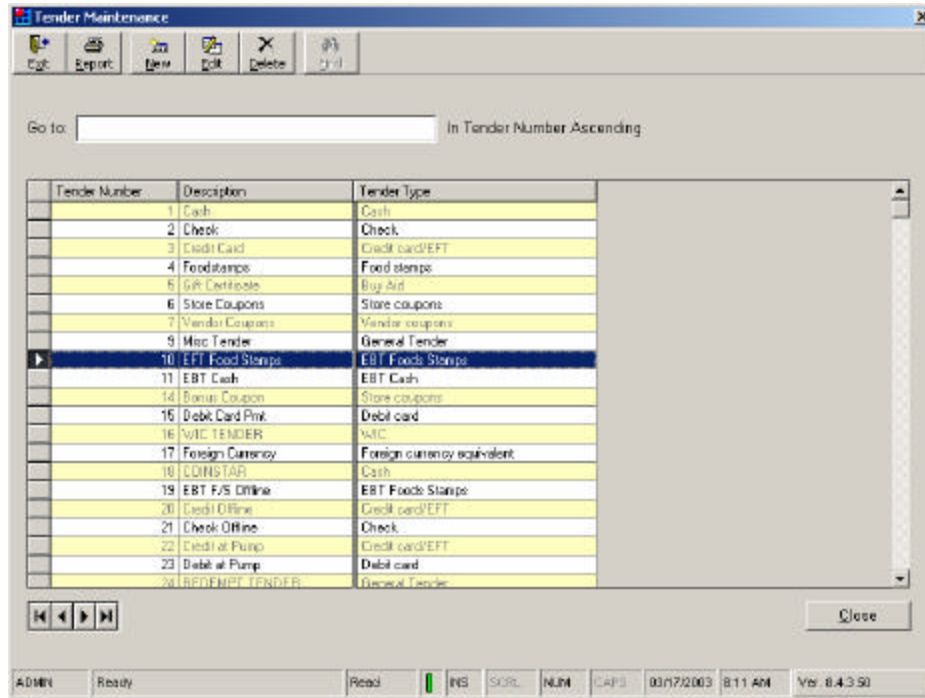


Figure 3.14: Tender Types - EBT Food Stamps

Tender Types — EBT Food Stamps Tender Setup Tab

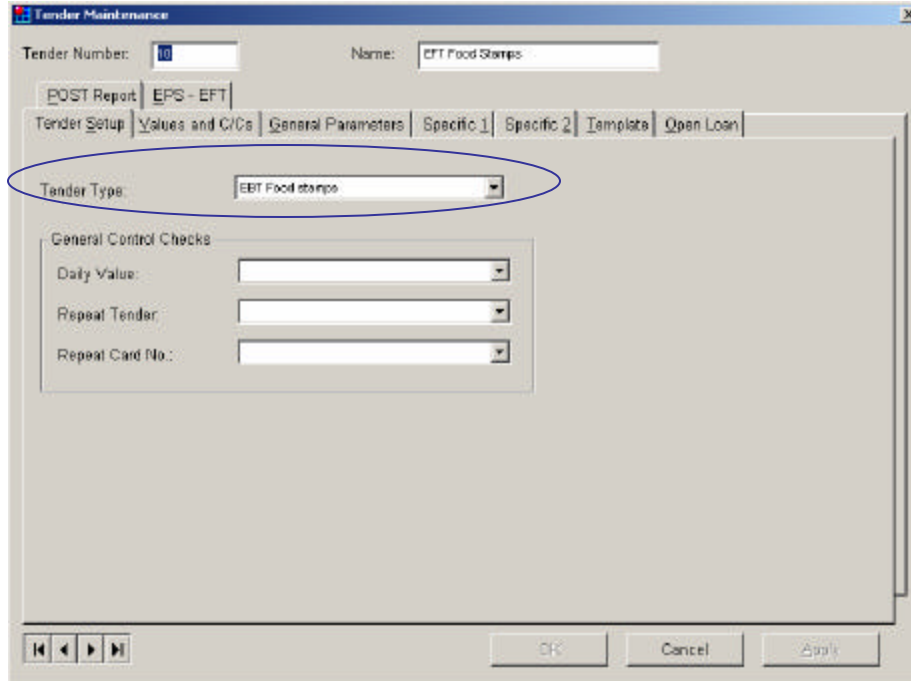


Figure 3.15: EBT Food Stamps Screen Tender Setup

For the WinEPS to ISS45 integration setup, use the following configuration properties:

Property	Description
Type of Tender	EBT Food Stamps.

Tender Types — EBT Food Stamps General Parameters Tab

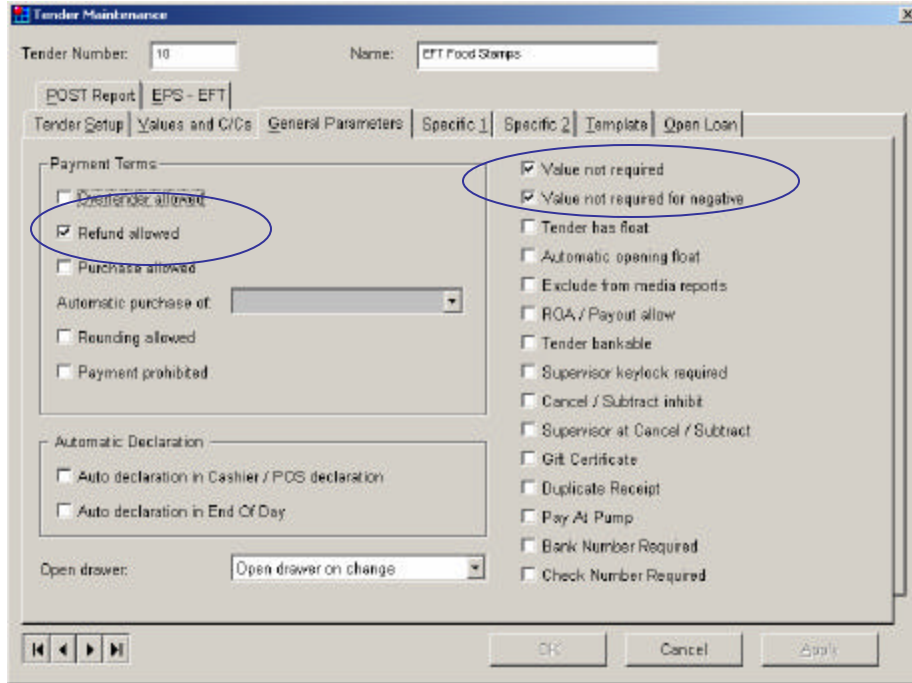


Figure 3.16: EBT Food Stamps Screen General Parameters

For the WinEPS to ISS45 integration setup, use the following configuration properties:

Property	Description
Refund allowed	Select checkbox.
Value not required	Select checkbox.
Value not required for negative	Select checkbox.

Tender Types — EBT Food Stamps Specific 1 Tab

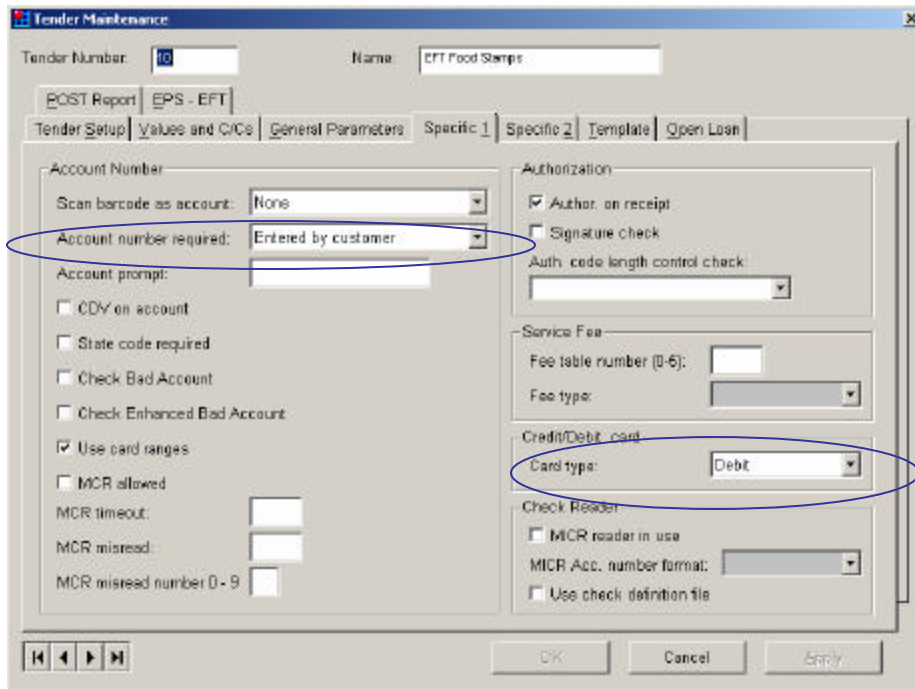


Figure 3.17: EBT Food Stamps Screen Specific 1

For the WinEPS to ISS45 integration setup, use the following configuration properties:

Property	Description
Card type	Debit.
Account number required	Entered by customer.

Tender Types — EBT Food Stamps EPS-EFT Tab

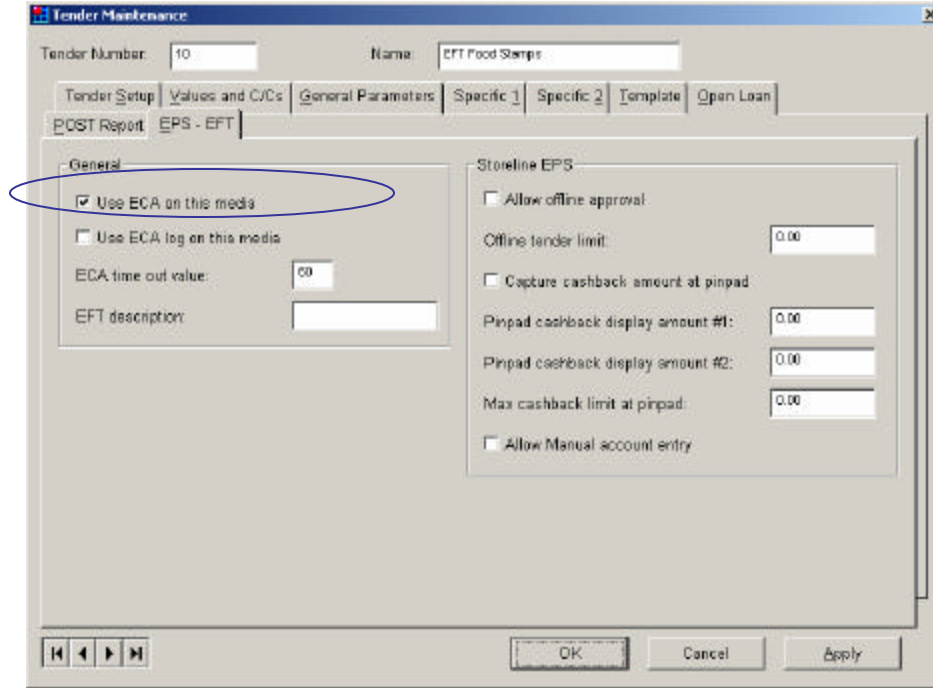


Figure 3.18: EBT Food Stamps Screen EPS-EFT

For the WinEPS to ISS45 integration setup, use the following configuration properties:

Property	Description
Use ECA on this media	Select checkbox.

Tender Types — EBT Cash

From the Tender Maintenance Screen double click on Tender Type – EBT Cash.

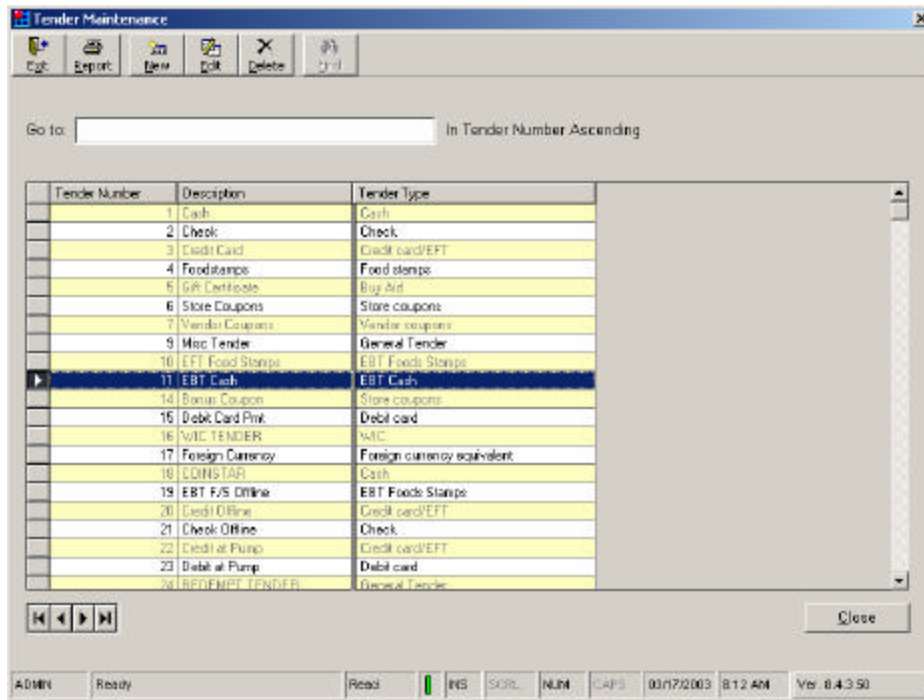


Figure 3.19: Tender Types – EBT Cash

Tender Types — EBT Cash Tender Setup Tab

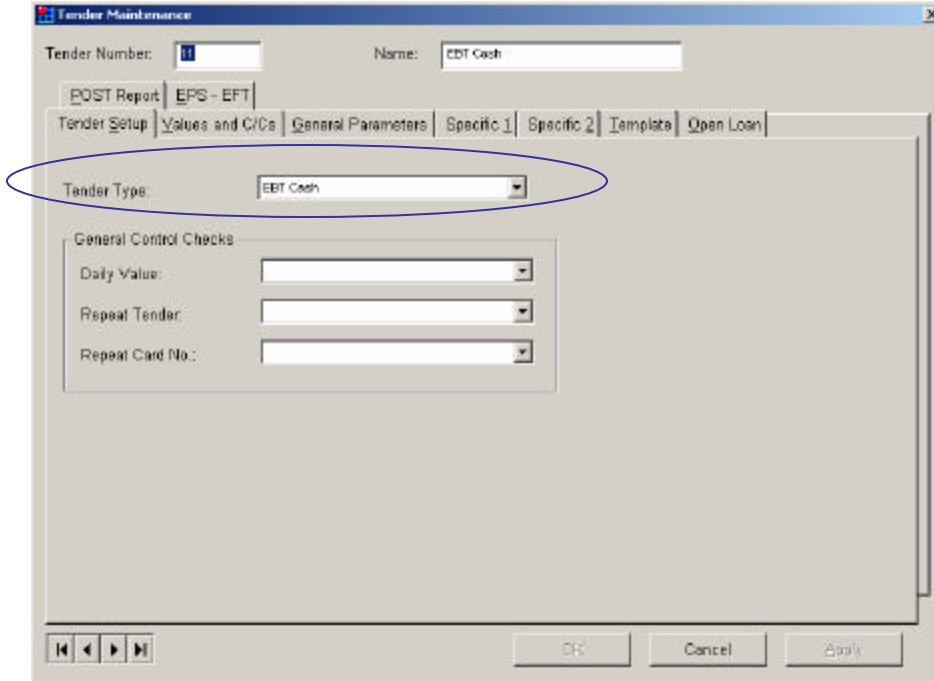


Figure 3.20: EBT Cash Screen Tender Setup

For the WinEPS to ISS45 integration setup, use the following configuration properties:

Property	Description
Tender Type	EBT Cash

Tender Types — EBT Cash General Parameters Tab

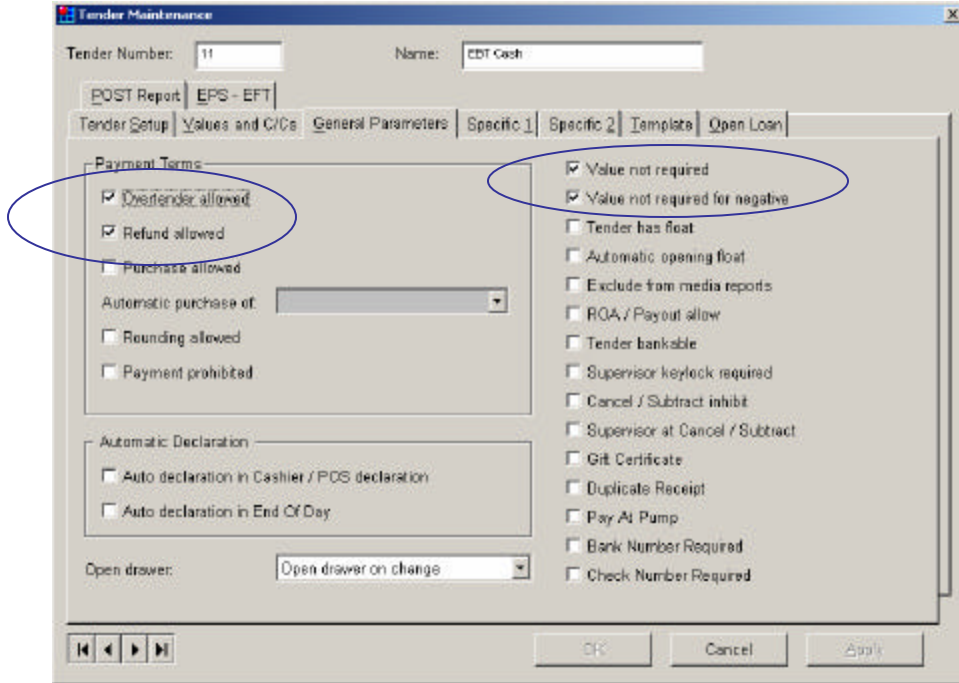


Figure 3.21: EBT Cash Screen General Parameters

For the WinEPS to ISS45 integration setup, use the following configuration properties:

Property	Description
Overtender allowed	Select checkbox.
Refund allowed	Select checkbox.
Value not required	Select checkbox.
Value not required for negative	Select checkbox.

Tender Types — EBT Cash Specific 1 Tab

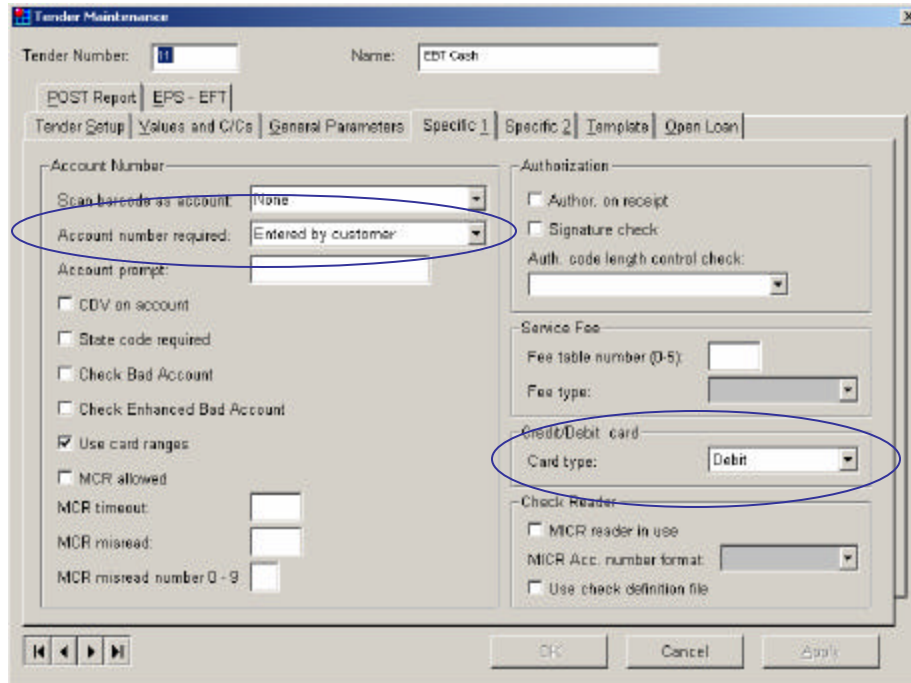


Figure 3.22: EBT Cash Screen Specific 1

For the WinEPS to ISS45 integration setup, use the following configuration properties:

Property	Description
Account number required	Entered by customer.
Card type	Debit.

Tender Types — EBT Cash EPS-EFT Tab

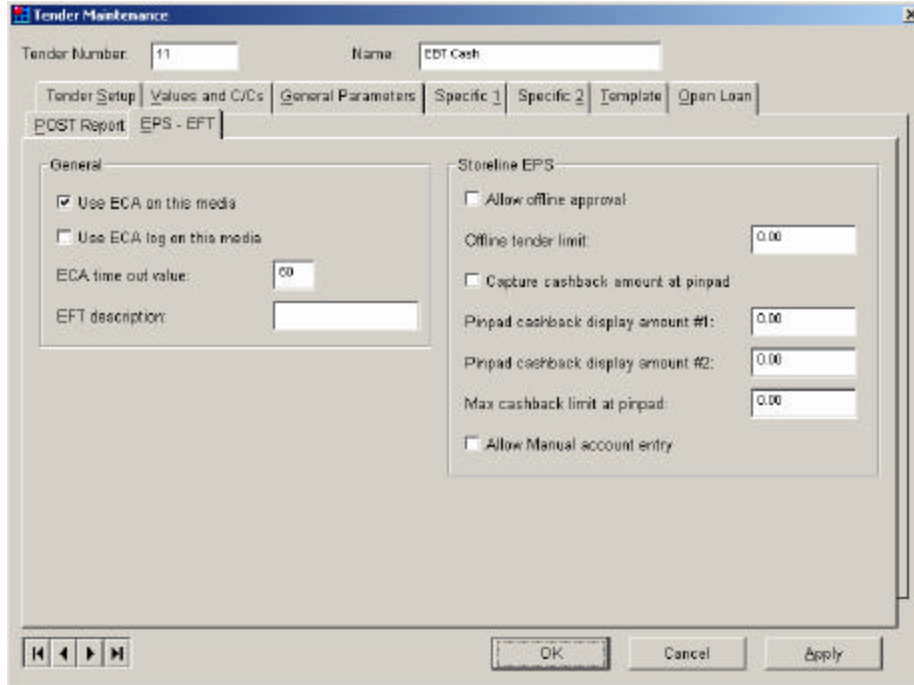


Figure 3.23: EBT Cash Screen EPS-EFT

For the WinEPS to ISS45 integration setup, use the following configuration properties:

Property	Description
Use ECA on this media	Select checkbox.

Tender Types — Debit

From the Tender Maintenance Screen double click on Tender Type – Debit.

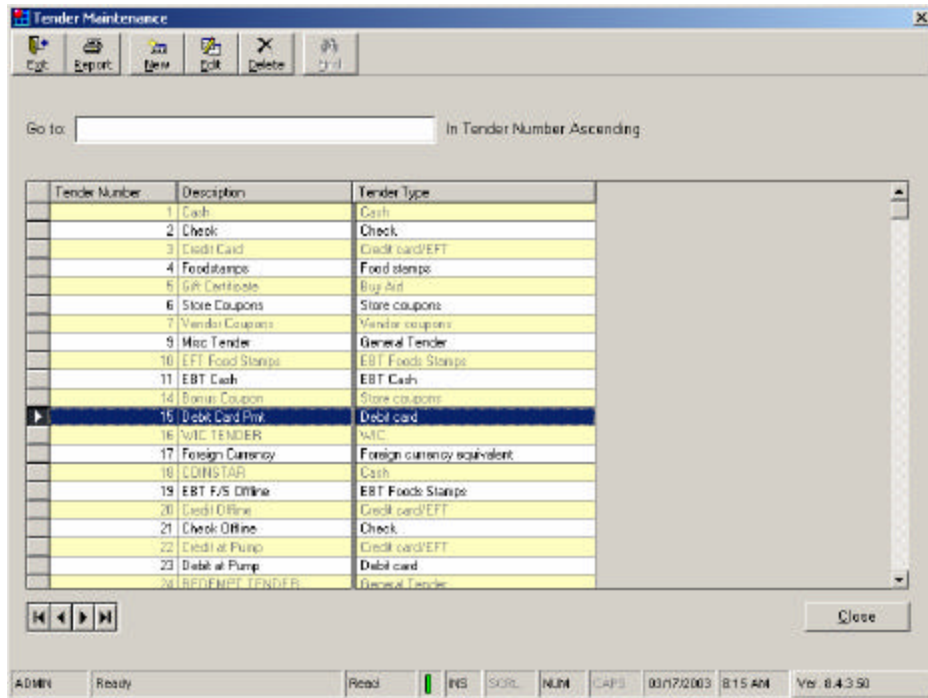


Figure 3.24: Tender Types - Debit

Tender Types — Debit Tender Setup Tab

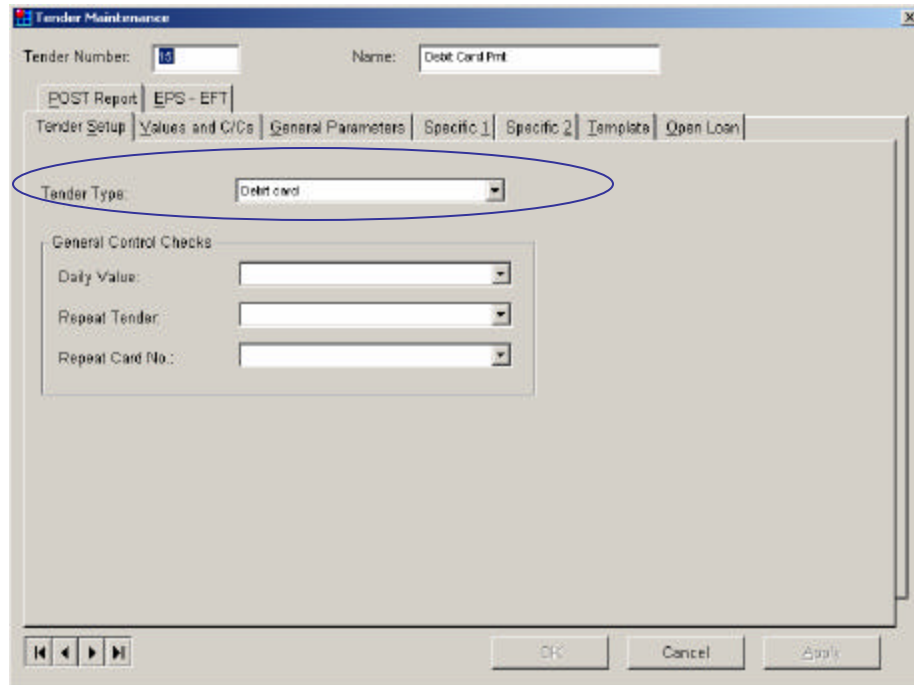


Figure 3.25: Debit Screen Tender Setup

For the WinEPS to ISS45 integration setup, use the following configuration properties:

Property	Description
Tender Type	Debit card.

Tender Types — Debit General Parameters Tab

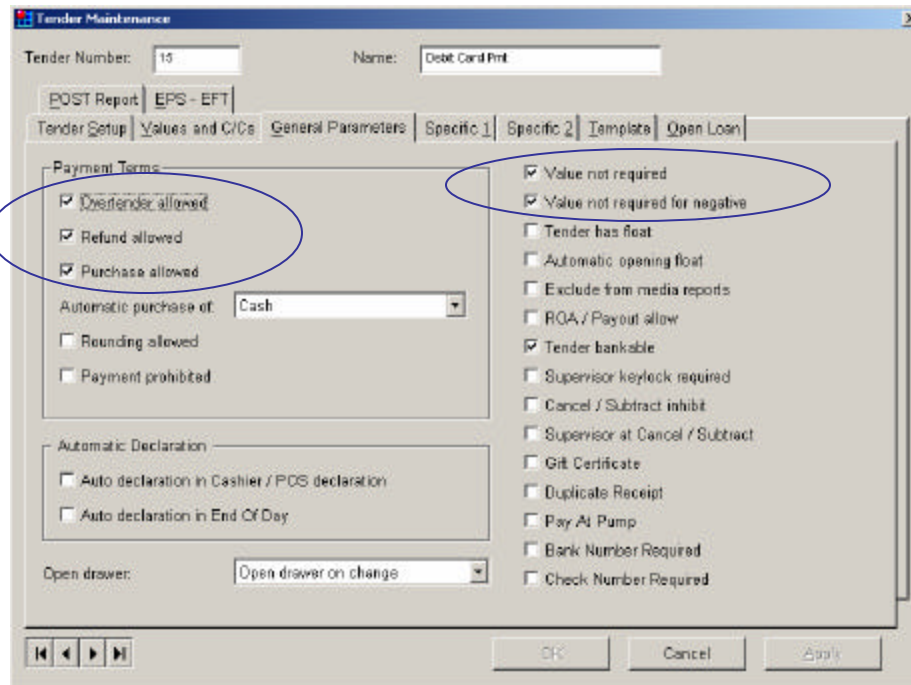


Figure 3.26: Debit Screen General Parameters

For the WinEPS to ISS45 integration setup, use the following configuration properties:

Property	Description
Overtender allowed	Select checkbox.
Refund allowed	Select checkbox.
Purchase allowed	Select checkbox.
Value not required	Select checkbox
Value not required for negative	Select checkbox.

Tender Types— Debit Specific 1 Tab

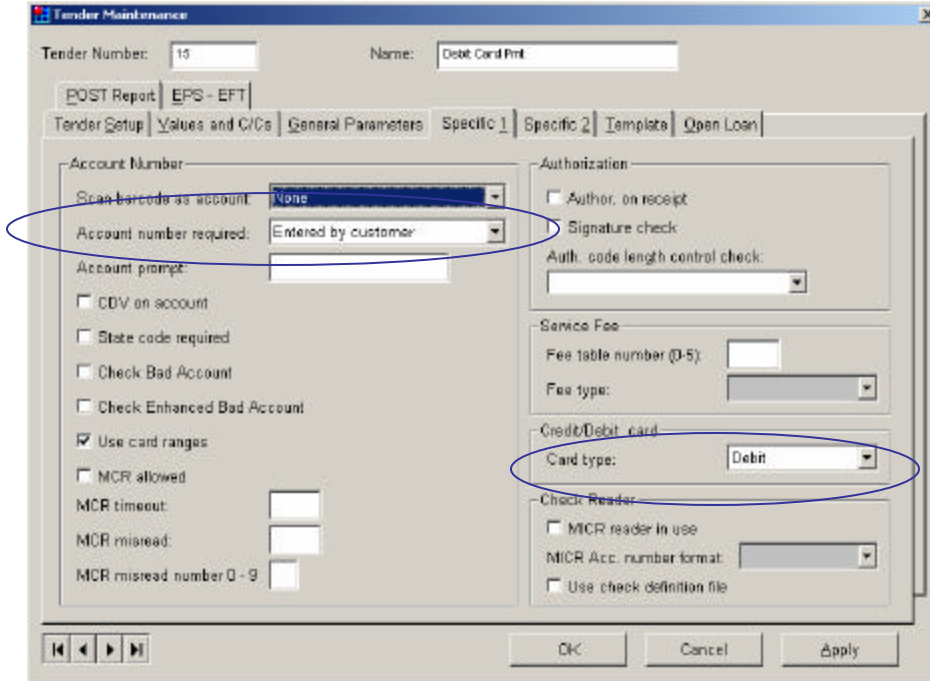


Figure 3.27: Debit Screen Specific 1

For the WinEPS to ISS45 integration setup, use the following configuration properties:

Property	Description
Account number required	Entered by customer.
Card type	Debit

Tender Types — Debit EPS-EFT Tab

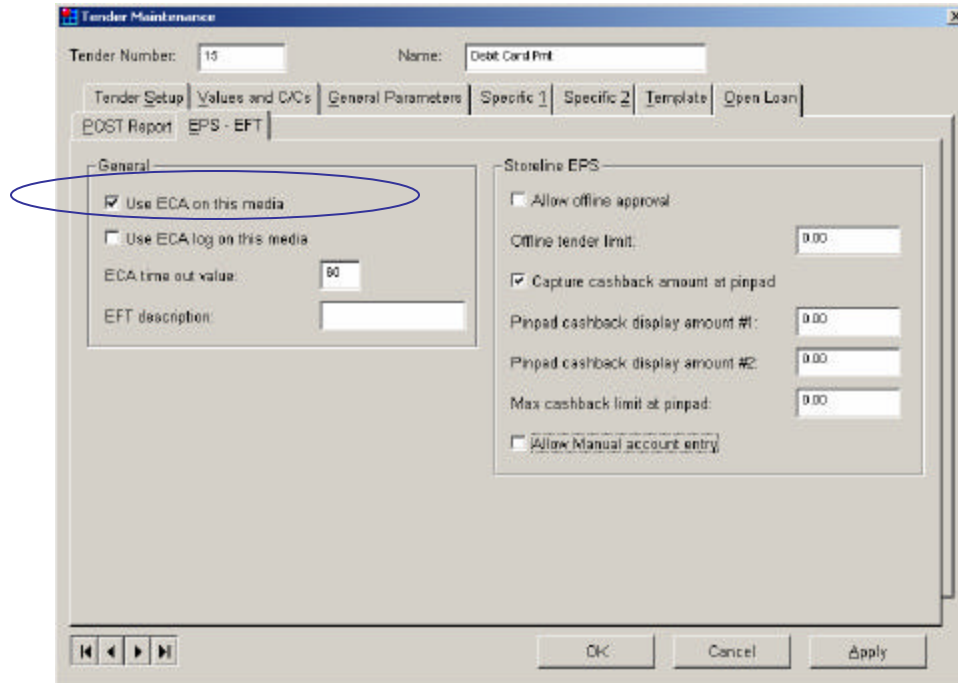


Figure 3.28: Debit Screen EPS-EFT

For the WinEPS to ISS45 integration setup, use the following configuration properties:

Property	Description
Use ECA on this media	Select checkbox.

Tender Types — Gift Card

From the Tender Maintenance Screen double click on Tender Type – Gift Card.

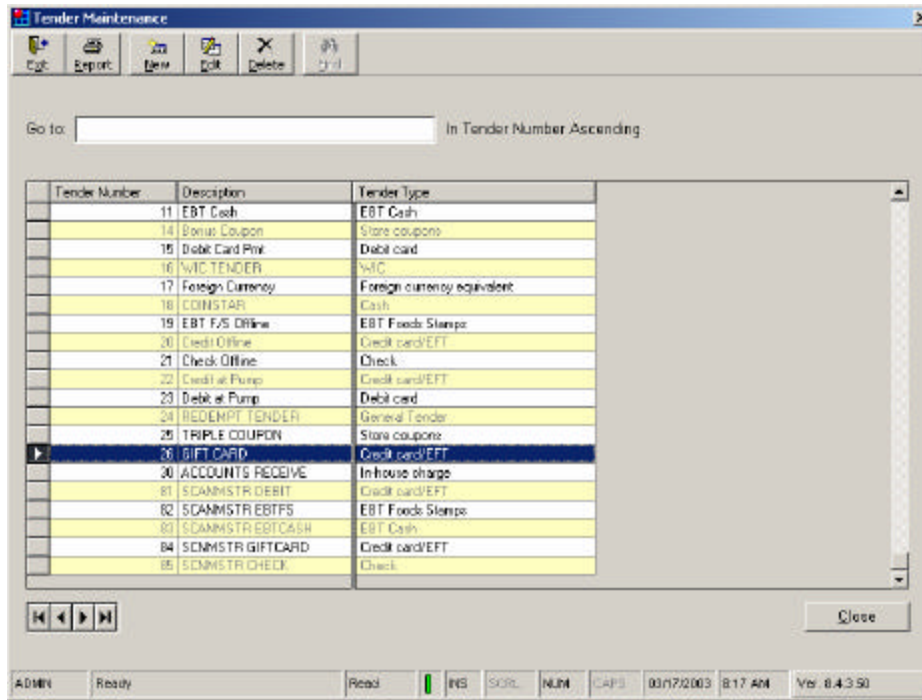


Figure 3.29: Tender Types – Gift Card

Tender Types — Gift Card Tender Setup Tab

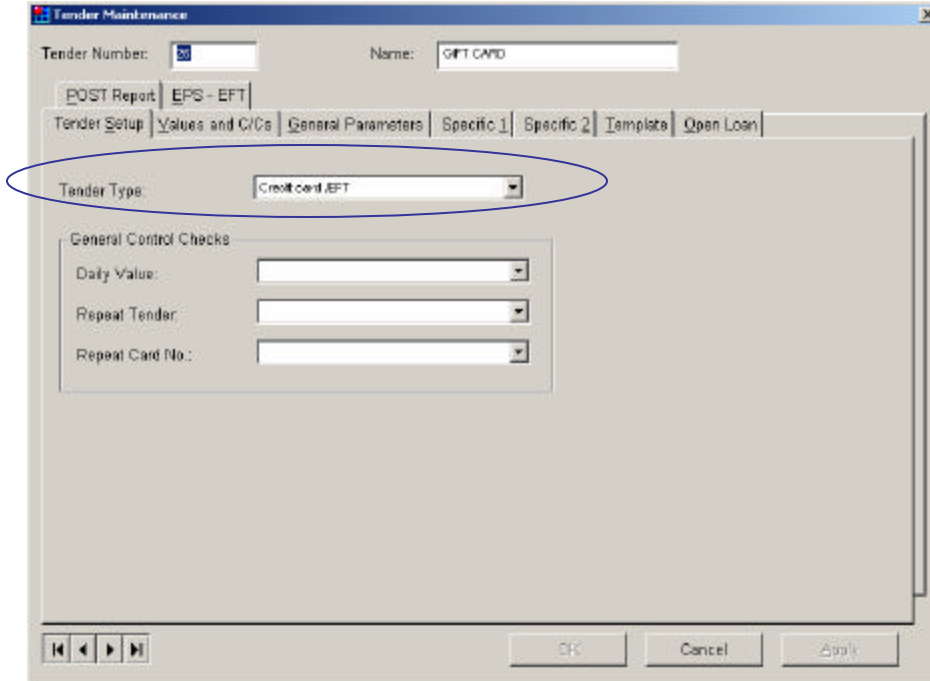


Figure 3.30: Gift Card Screen Tender Setup

For the WinEPS to ISS45 integration setup, use the following configuration properties:

Property	Description
Tender Type	Credit card /EFT.

Tender Types — Gift Card General Parameters Tab

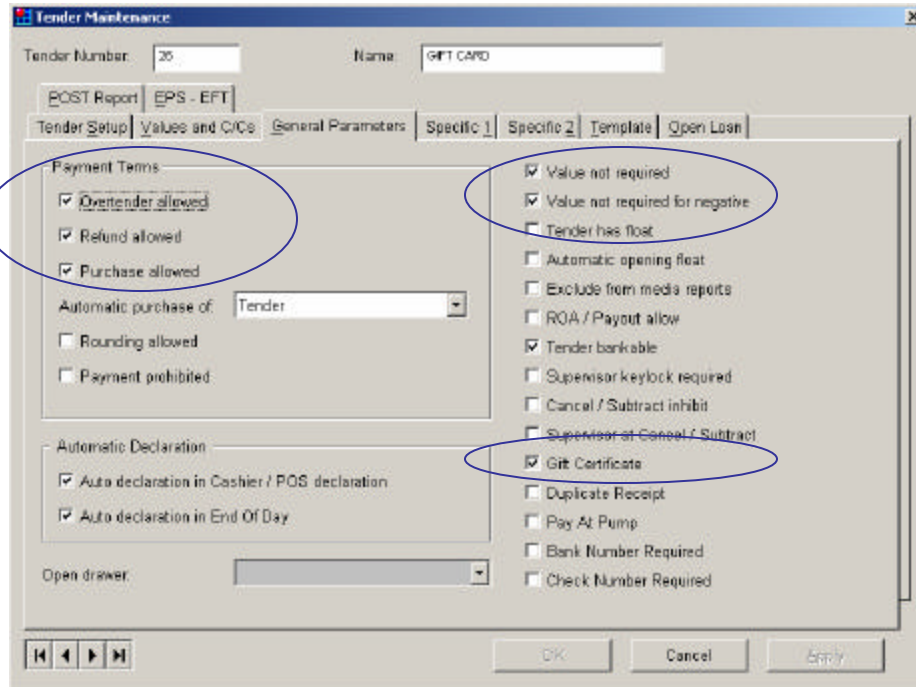


Figure 3.31: Gift Card Screen General Parameters

For the WinEPS to ISS45 integration setup, use the following configuration properties:

Property	Description
Overtender allowed	Select checkbox.
Refund allowed	Select checkbox.
Purchase allowed	Select checkbox.
Value not required	Select checkbox.
Value not required for negative	Select checkbox.
Gift Certificate	Select checkbox.

Tender Types — Gift Card Specific 1 Tab

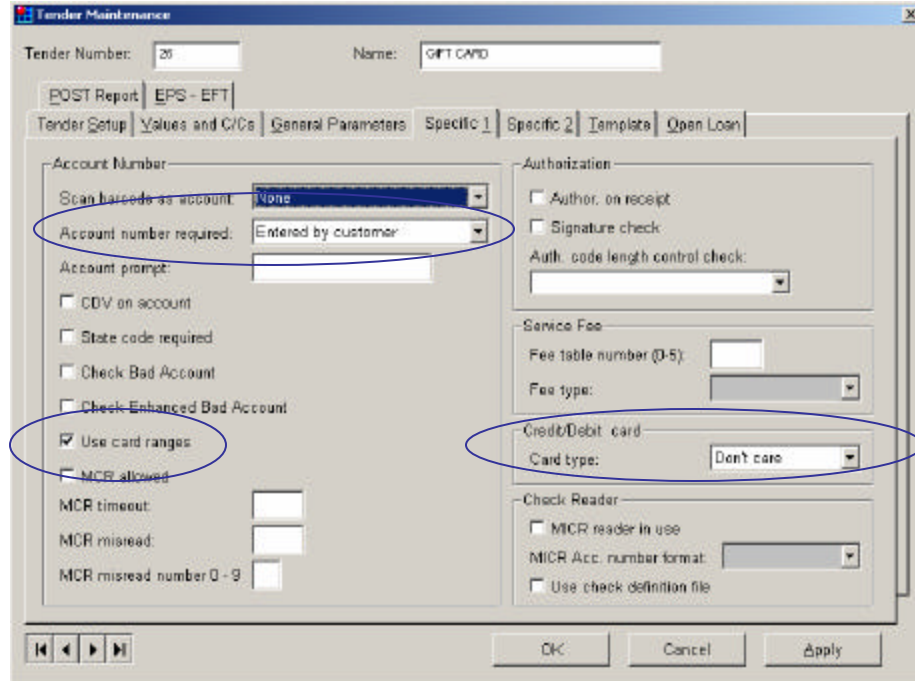


Figure 3.32: Gift Card Screen Specific 1

For the WinEPS to ISS45 integration setup, use the following configuration properties:

Property	Description
Account number required	Entered by customer.
Use card ranges	Select checkbox.
Card type	Don't care

Tender Types — Gift Card EPS-EFT Tab

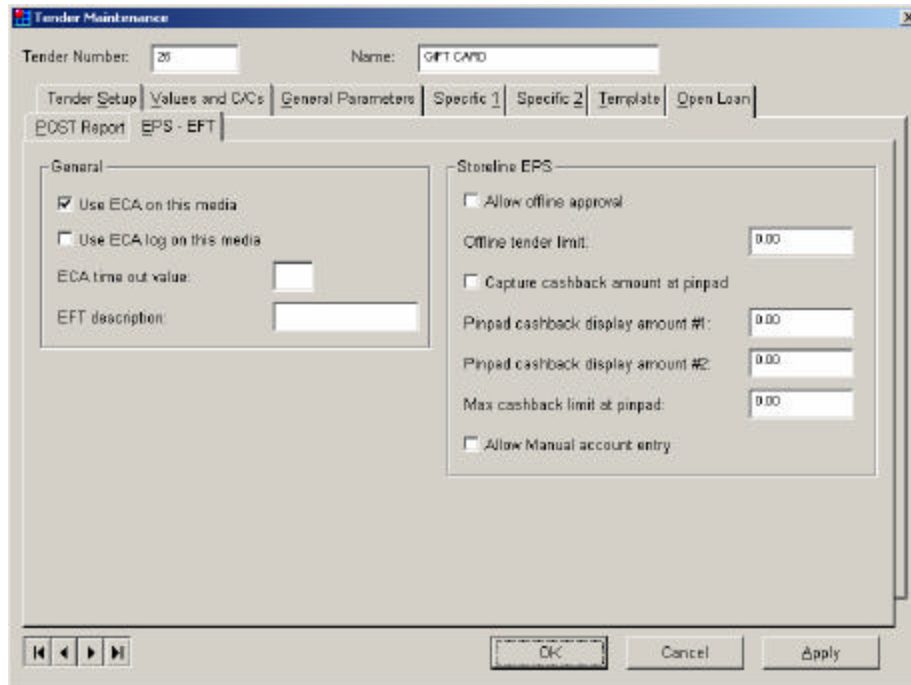


Figure 3.33: Gift Card Screen EPS-EFT

For the WinEPS to ISS45 integration setup, use the following configuration properties:

Property	Description
Use ECA on this media	Select checkbox.

Accessing the Card Range Maintenance Menu

Card Range Maintenance allows you to set the properties for store accepted credit cards. For example, if a store does not accept Discover®, the card can automatically decline without being sent to WinEPS. Examples of Card Range screens are as follows:

1. From the **Main Menu**, go to Database Management\Card Maintenance\Card Range.
This displays the menu for Card Maintenance menu.

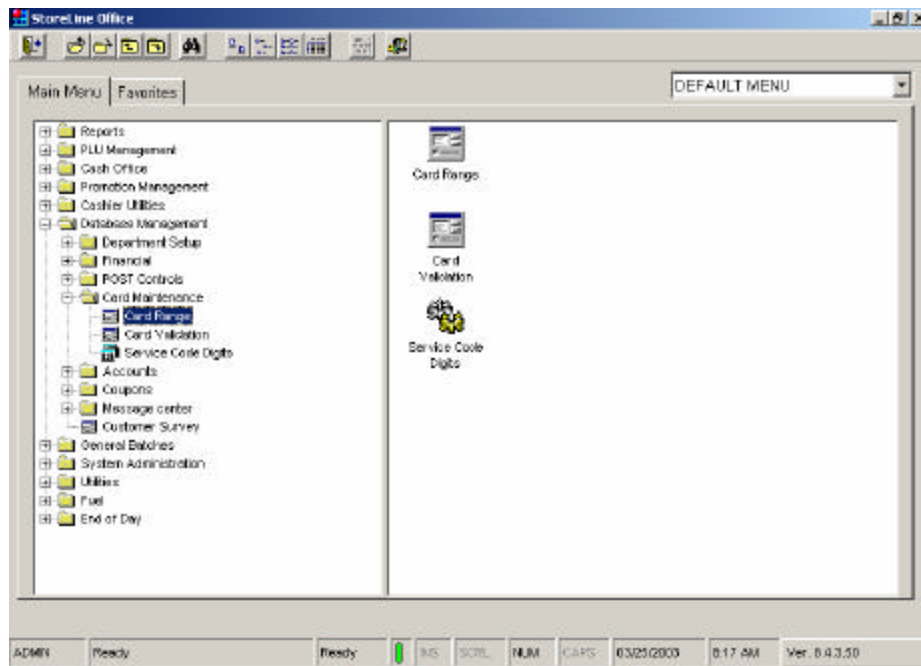


Figure 3.34: Card Maintenance Selection

- From the **Card Maintenance** menu, Double click Card Range.
This displays the Card Range Maintenance menu.

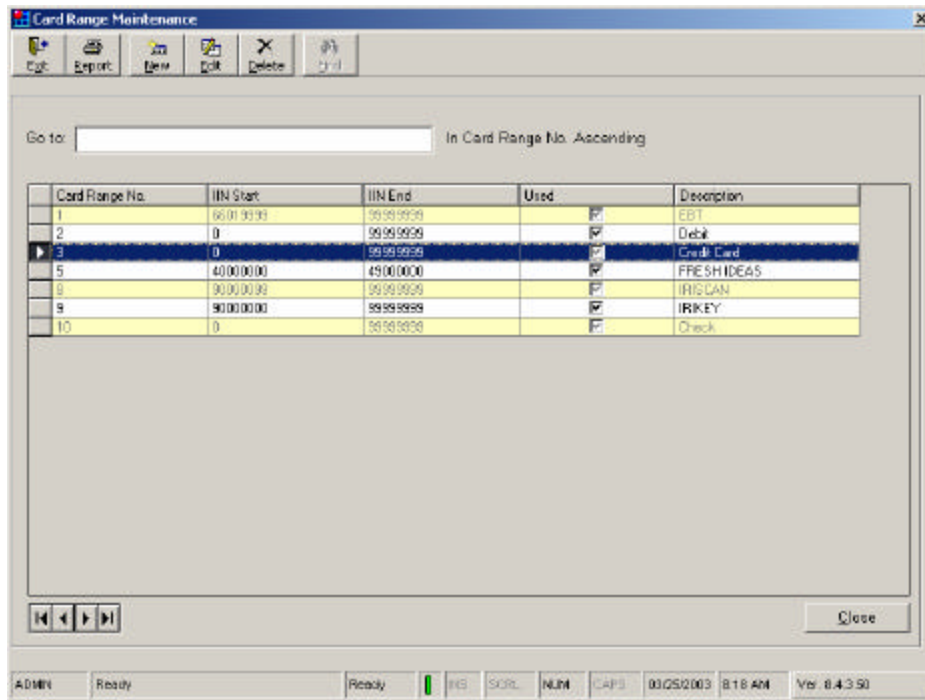


Figure 3.35: Card Range Maintenance Menu

Card Range Maintenance

The screenshot shows the 'Card Range Maintenance' dialog box with the 'Basic Setup' tab selected. The dialog has a title bar and a close button. At the top, there are fields for 'Card Range No.' (containing '8'), 'Description:' (containing 'Credit Card'), and a checked 'Active' checkbox. Below this are four tabs: 'Basic Setup', 'Schemas', 'Prompts and Printing', and 'Authorization'. The 'Basic Setup' tab contains several sections: 'IIN' with 'Start:' (0) and 'End:' (99999999) fields; 'Linked Tenders' with five 'Tender' dropdowns (Tender 1: Credit Card, Tender 2: GFT CARD, Tender 3, 4, 5: empty) and a 'Type:' dropdown (Credit card, EFT); 'Tender is:' with radio buttons for 'Credit' (selected) and 'Debit', and a 'Tender Predefined' checkbox; 'Card Validation' with a 'Validation:' dropdown (valM1) and a checked 'Continue on validation failure' checkbox; 'Allow:' with checked checkboxes for 'Sales', 'Refunds', and 'Purchase'; and 'General' with a 'Card Usage:' dropdown and an unchecked 'Fly Buys' checkbox. At the bottom, there are navigation arrows and 'OK', 'Cancel', and 'Apply' buttons.

Figure 3.36: Card Range Maintenance Screen Basic Setup

WinEPS requires using card ranges for PAN Masking conditions. Please contact your ICL Dealer for proper Card Range setup.

Chapter 4

SCAT Code

Loading SCAT Code

WinEPS allows you to easily load SCAT code from the POST. This chapter assumes you have installed WinEPS and OpenEPS, and all back-office configurations are complete. Instructions for loading SCAT code include the terminals listed below:

- ICE6000
- ICE5500P
- OMNI 490
- OMNI 7000
- IVI C2000
- Everest or Everest +

Loading SCAT Code on the ICE6000 Terminal

Prior to loading the actual SCAT code on the ICE6000, you must complete the following:

- Extract SCAT-ICE6K vXX.zip (XX refers to the current version number)
- Launch Stream Loader
- Initialize the ICE Terminal

After the SCAT code loads successfully, it is necessary to download appropriate screen files. Follow the procedures below to guide you through each process to successfully load SCAT code on the ICE6000 and download the necessary screen files.

Extracting SCAT-ICE6K vXX.zip (XX refers to the current version number)

1. From the **WinEPS Installation CD**, go to **OpenEPS\SCAT Code \ICE6000**.
2. Copy and extract the zip file, **SCAT-ICE6K vXX.zip** into **root drive:\ Program Files\MicroTrax\OpenEPS** on each POST.

Launching Stream Loader

1. Now that the contents of the zip file, SCAT-ICE6K vXX.zip are extracted to the OpenEPS directory, double-click **WStream.exe**.

This launches Stream Loader. Click Options to display Stream Loader's Options window.

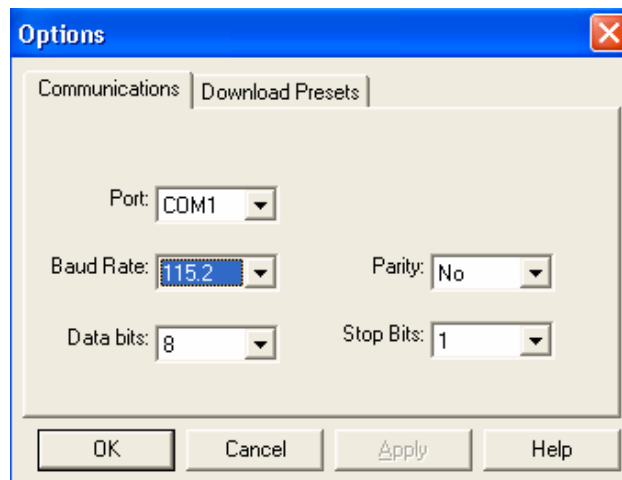


Figure 5:1 Stream Loader Options - ICE6000

Property	Description
Port	Select the PC port to which the ICE6000 is attached.
Baud Rate	Set to [115.2].
Data bits	Set to [8].
Parity	Set to "No".
Stop Bits	Set to [1].

2. Click **OK**.
This directs you to Stream Loader's Main window.

Initializing the ICE Terminal

1. Power-up the ICE Terminal.
2. From the **ICE Terminal's Main Menu**, select **[5], Fast Load**.
3. Select **Receive**.
4. Select **RS232 Port 3**.
5. Select **115200 Baud**.

The ICE Terminal displays "Unit Receive". At this point, you are now ready to load the SCAT code.

Loading the SCAT Code onto the ICE6000

1. From **Stream Loader's Main window**, click **Start**.

This loads the SCAT code on the ICE6000.

After the SCAT code load to ICE6000 is complete, you must download the appropriate screen files. At this point, the ICE 6000 terminal displays the message, "Waiting for Screen Files".

Downloading Screen Files

1. From the **WinEPS Installation CD**, go to **OpenEPS\SCAT Code\ICE6000\Screen Files** and select the appropriate screen files.



Note: The naming convention of the zip files are based on the displayed tender types and encryption types.

2. Copy and extract the appropriate zip file to **root drive:\Program Files\MicroTrax\EPS** of the WinEPS Server.
3. Launch **WinEPS**, and start desired lane.
4. Sign onto the desired POST.

The screen files will download automatically.

Loading SCAT Code on the ICE5500P Terminal

Prior to loading the actual SCAT code on the ICE5500P, you must complete the following:

- Extract SCAT-5500P vXX.zip (XX refers to the current version number)
- Launch Stream Loader
- Initialize the ICE Terminal

After the SCAT code loads successfully, it is necessary to download appropriate screen files. Follow the procedures below to guide you through each process to successfully load SCAT code on the ICE5500P and download the necessary screen files.

Extracting SCAT-5500p vXX.zip

1. From the **WinEPS Installation CD**, go to **OpenEPS\SCAT Code\ICE5500P**.
2. Copy and extract the zip file, **SCAT-5500P vXX.zip** into **root drive:\ Program Files\MicroTrax\OpenEPS**.

Launching Stream Loader

1. Now that the contents of the zip file, SCAT-5500P vXX.zip are extracted to the OpenEPS directory, double-click **WStream.exe**.

This launches Stream Loader. Click Options to display Stream Loader's Options window.

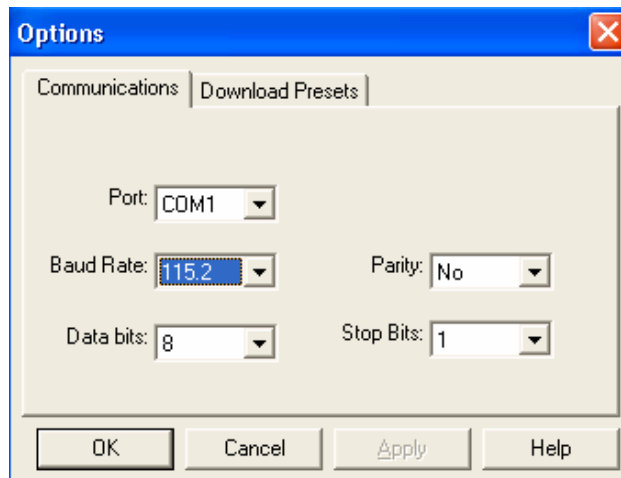


Figure 5:2 Stream Loader Options - ICE5500P

Property	Description
Port	Select the PC port to which the ICE5500P is attached.
Baud Rate	Set to [115.2].
Data bits	Set to [8].
Parity	Set to "No".
Stop Bits	Set to [1].

2. Click **OK**.

This directs you to Stream Loader's Main window.

Initializing the ICE Terminal

1. Power-up the ICE Terminal.
2. From the **ICE Terminal's Main Menu**, select **[5], Fast Load**.
3. Select **Receive**.
4. Select **RS232 Port**.
5. Select **115200 Baud**.

The ICE Terminal displays "Unit Receive". At this point, you are now ready to load the SCAT code.

Loading the SCAT Code onto the ICE5500P

1. From **Stream Loader's Main window**, click **Start**.

This loads the SCAT code on the ICE5500P.

After the SCAT code load to ICE5500P is complete, you must download the appropriate screen files. At this point, the ICE5500P terminal displays the message, "Waiting for Screen Files".

Downloading Screen Files

1. From the **WinEPS Installation CD**, go to **OpenEPS\SCAT Code\ICE5500P\Screen Files** and select the appropriate screen files.



Note: The naming convention of the zip files are based on the displayed tender types and encryption types.

2. Copy and extract the appropriate zip file to **root drive:\Program Files\MicroTrax\EPS** of the WinEPS Server.
3. Launch **WinEPS**, and start desired lane.
4. Sign onto the desired POST.

The screen files will download automatically.

Loading SCAT Code on the OMNI 490 Terminal

Prior to loading the actual SCAT code on the OMNI 490, you must complete the following:

- Extract OMNI 490 vXX.zip (XX refers to the current version number)
- Initialize the ICE Terminal

Follow the procedures below to guide you through each process and successfully load SCAT code on the OMNI 490.

Extracting OMNI 490 vXX.zip

1. From the **WinEPS Installation CD**, go to **OpenEPS\SCAT Code\Omni 490**.
2. Copy and extract the zip file, **Omni 490 vXX.zip** into **WinEPS Server root drive:\Program Files\MicroTrax\EPS**
3. Launch **WinEPS** and start the desired lanes.

Initializing the OMNI 490 Terminal

1. Power-up the OMNI 490 Terminal.
2. Press **7** and **Enter** simultaneously.
This displays the message, “Enter Password”.
3. Key in: **1-Alpha-Alpha-6-6-8-3-1**, then press **Enter**. The Alpha key is located above the Enter key.
This brings you to the Verifone Omni 490 System screen.
4. Press the **#** key.
The OMNI 490 Terminal displays “Unit Receive”. At this point, you are now ready to load the SCAT code.

Loading the SCAT Code onto the OMNI 490

1. Sign onto desired lane.
This automatically loads the SCAT code on the OMNI 490.

Loading SCAT Code on the OMNI 7000 Terminal

Prior to loading the actual SCAT code on the OMNI 7000, you must complete the following:

- Extract OMNI 7000 vXX.zip (XX refers to the current version number)
- Initialize the Terminal

Follow the procedures below to guide you through each process and successfully load SCAT code on the OMNI 7000.

Extracting OMNI 7000 vXX.zip

1. From the **WinEPS Installation CD**, go to **OpenEPS\SCAT Code\Omni 7000**.
2. Copy and extract the zip file, **Omni 7000 vXX.zip** into **WinEPS Server root drive:\Program Files\MicroTrax\EPS**
3. Launch **WinEPS** and start the desired lanes.

Initializing the OMNI 7000 Terminal

Use the table below to initialize the terminal for download.

Terminal Prompt	Action
Any Prompt	Press 7 and ENTER simultaneously.
Password	1 6 6 8 3 1 ENTER
Download	Select Download by touching the screen, or by pressing F4.
Select Com Port?	Select COM 3 by touching the screen or by pressing F3.
Download Type?	Select Full, or press F4.
Unit Receive COM 3 AutoBaud CLEAR to Abort	This prompt will display while waiting for the download.

Loading the SCAT Code onto the OMNI 7000

1. Sign onto desired lane.

This automatically loads the SCAT code on the OMNI 7000.

Loading SCAT Code on the IVI C2000 Terminal

Prior to loading the actual SCAT code on the IVI C2000, you must complete the following.

- Extract C2k vXX.zip (XX refers to the current version number)
- Initialize the C2000 Terminal

Follow the procedures below to guide you through each process and successfully load SCAT code on the IVI C2000.

Extracting C2k vXX.zip (XX refers to the current version number)

1. From the **WinEPS Installation CD**, go to **OpenEPS\SCAT Code\C2000**.
2. Copy and extract the zip file, **C2k vXX.zip** into **WinEPS Server root drive:\Program Files\MicroTrax\EPS**.
3. Launch **WinEPS** and start the desired lanes.

Initializing the C2000 Terminal

1. Power-up the C2000 Terminal.
2. From the **IVI C200 Protégé** screen, press **V** (down arrow) and **Enter** simultaneously.
This displays the message, “Enter Password to Continue <Enter>.”
3. Press **Enter**.
This displays the message, “Enter Function #”.
4. Key in: **2-4-6-1-3-5** and press **Enter**.
This displays the message, “Enter Function #”.
5. Enter **90**.
This displays the message, “Select DLL Port — 0”
6. If the DLL port is a value other than **0**, press **Clear, Enter, 0**.
This displays the message, “Select DLL Type — 0”
7. If the DLL port is a value other than **0**, press **Clear, Enter, 0**.
This displays the message, “Select Baud Rate — 7”
8. If the baud rate is a value other than **7**, press **Clear, Enter, 7**.
This displays the message, “Start Download?”
9. Press **Enter**.
This displays the message, “Downloading”.

Loading the SCAT Code onto the IVI C2000

1. Sign onto the desired lane.
This automatically loads the SCAT code on the IVI C2000.

Loading SCAT Code on the Everest or Everest+ Terminal

Prior to loading the actual SCAT code on the Everest/Everest+ terminals, you must complete the following:

- Extract Everest vXX.zip (XX refers to the current version number)
- Initialize the Everest or Everest+ Terminal

Follow the procedures below to guide you through each process and successfully load SCAT code on the Everest terminal.

Extracting Everest vXX.zip (XX refers to the current version number)

1. From the **WinEPS Installation CD**, go to **OpenEPS\SCAT Code\Everest**.
2. Copy and extract the zip file, **everest vXX.zip** into **POST root drive:\ Program Files\MicroTrax\OpenEPS**.
3. Rename either **Config.p1** or **Config.p3** to **Config.sys**.



Note: “p1” refers to port 1 on the Everest cable and “p3” refers to port 3 on the Everest cable.

Initializing the Everest or Everest+ Terminal

1. From the Everest or an Everest+ terminal, press **7** and **Enter** simultaneously.
This displays the message, “Enter Password”.
2. Key in: **1-6-6-8-3-1** and press **Enter**.
3. From the **Verifone Everest System** screen, press **Enter**.
This displays the message, “Function? Downld”.
4. Press the key located directly under “Acpt”.
This displays the message, “Port?”
5. Select the port which corresponds to the port used on the Everest cable.
This displays the message, “Unit Receive Autobaud Check”.

Loading the SCAT Code onto the Everest or Everest+ Terminal

1. From the **POST**, bring up a **Command-Prompt**.
2. From the root prompt type: **CD Program Files\MicroTrax\OpenEPS**.
3. Press **Enter**.
4. From the **<root drive>:\ Program Files\MicroTrax\OpenEPS** prompt, type: **2 n** (where the n parameter indicates ‘new.’)

The terminal automatically loads the SCAT code.



Note: “2” refers to the port on the PC which Everest is attached. If using a different port, simply replace “2” with the appropriate port number. 68

List of Figures

Chapter 1

Introduction ----- 1

Figure 1.1: Overview of WinEPS Payment Application-----1

Chapter 2

Integrating WinEPS to ISS45 from the WinEPS Server ----- 4

Figure 2.1: Payment Terminal Configuration Screen 1 -----5

Figure 2.2: Payment Terminal Configuration Screen 2-----6

Figure 2.3: Payment Terminal Configuration Screen 3-----7

Figure 2.4: Payment Terminal Configuration Screen 4-----8

Figure 2.5: Setup Configuration for OpenEPS -----9

Figure 2.6: Payment Terminal Configuration Screen 5-----10

Figure 2.7: Lane Definitions -----11

Figure 2.8: Payment Terminal Settings Tab -----13

Figure 2.9: Other Tab -----14

Figure 2.10: Host Processor Definition-----15

Figure 2.11: Host Parameters Screen 1 -----16

Figure 2.12: Host Parameters Screen 2-----17

Figure 2.13: Host Parameters Screen 3-----18

Chapter 3

Integrating WinEPS to ISS45 from the ISS45

Back Office Application ----- 19

Figure 3.1: Systems Parameters Main Menu -----21

Figure 3.2: POST Configuration Menu -----21

Figure 3.3: POST Configuration -----22

Figure 3.4: Tender Maintenance -----23

Figure 3.5: Tender Types - Check -----24

Figure 3.6: Check Screen Tender Setup -----25

Figure 3.7: Check Screen General Parameters-----26

Figure 3.8: Check Screen Specific 1 -----27

Figure 3.9: Check Screen EPS-EFT-----28

Figure 3.10: Tender Types - Credit -----29

Figure 3.11: Credit Screen Tender Setup -----30

Figure 3.12: Credit Screen General Parameters-----31

Figure 3.13: Credit Screen Specific 1 -----32



Figure 3.14: Tender Types – EBT Food Stamps -----	33
Figure 3.15: EBT Food Stamps Screen Tender Setup -----	34
Figure 3.16: EBT Food Stamps Screen General Parameters -----	35
Figure 3.17: EBT Food Stamps Screen Specific 1 -----	36
Figure 3.18: EBT Food Stamps Screen EPS-EFT -----	37
Figure 3.19: Tender Types – EBT Cash-----	38
Figure 3.20: EBT Cash Screen Tender Setup-----	39
Figure 3.21: EBT Cash Screen General Parameters-----	40
Figure 3.22: EBT Cash Screen Specific 1-----	41
Figure 3.23: EBT Cash Screen EPS-EFT-----	42
Figure 3.24: Tender Types - Debit -----	43
Figure 3.25: Debit Screen Tender Setup -----	44
Figure 3.26: Debit Screen General Parameters-----	45
Figure 3.27: Debit Screen Specific 1 -----	46
Figure 3.28: Debit Screen EPS-EFT-----	47
Figure 3.29: Tender Types – Gift Card-----	48
Figure 3.30: Gift Card Screen Tender Setup -----	49
Figure 3.31: Gift Card Screen General Parameters-----	50
Figure 3.32: Gift Card Screen Specific 1 -----	51
Figure 3.33: Gift Card Screen EPS-EFT-----	52
Figure 3.34: Card Maintenance Selection -----	53
Figure 3.35: Card Range Maintenance Menu -----	54
Figure 3.36: Card Range Maintenance Screen Basic Setup-----	55

Chapter 4

Scat Code ----- 56

Figure 5.1: Stream Loader Options – ICE6000 -----	60
Figure 5.2: Stream Loader Options – ICE5500P -----	62