



- *XP Embedded Setup for ISS45*
- *and TeamPoS 2000*
-
-
-

XP Embedded Setup for ISS45 and TeamPoS 2000

Date of Issue	Product Identification Number	Part Number	Brief Description
October 2003	45000/074	89000160	Initial Release
October 2003	45000/074	89000161	Revision 1.1

**Copyright® StoreNext Retail Technologies LLC 1995-2003
All rights reserved**

This publication is protected by federal copyright law into any human or computer language in any form or by any means, electronic, mechanical, magnetic, manual. No part of this publication may be copied or distributed, stored in a retrieval system, or translated or otherwise, or disclosed to third parties without the express written permission of StoreNext Retail Technologies LLC.

StoreNext Retail Technologies LLC makes no representation or warranties with respect to the contents hereof and specifically disclaims any implied warranties of merchantability or fitness for a particular purpose. StoreNext Retail Technologies LLC further reserves the right to revise this publication and to make changes from time to time in the contents hereof without obligation of Fujitsu Transaction Solutions, Inc. to notify any person or organization of such revision or changes.

StoreNext Retail Technologies LLC has prepared this manual for use by users, authorized third parties and personnel of StoreNext Retail Technologies LLC as a guide to the proper installation, operation, customization and/or maintenance of StoreNext Retail Technologies LLC equipment and software. The drawings and specifications contained herein are the property of StoreNext Retail Technologies LLC.

Address comments and corrections to:

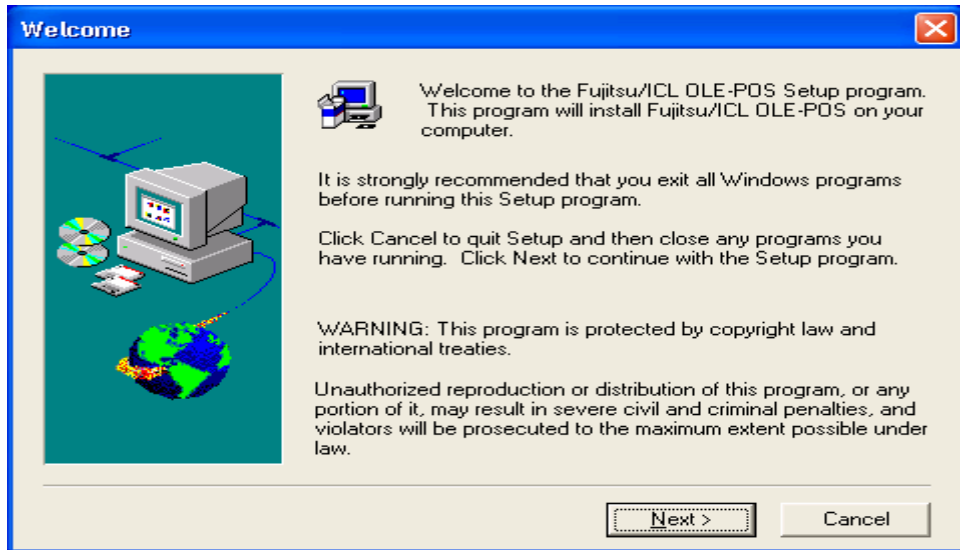
StoreNext Retail Technologies LLC
ISS45 Program Director
1250 East Arques Avenue
M/S 363
Sunnyvale, CA 94085

Setup for a TP2K with Windows XP Embedded

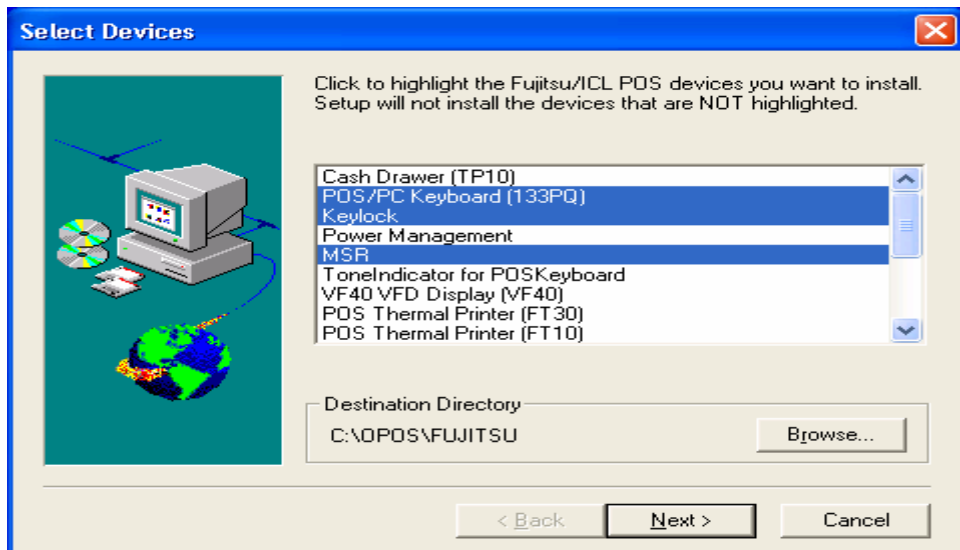
- 1) Windows XP Embedded on the TP2K has the proper drivers for the audio, video and network cards loaded from the factory
- 2) At initial boot select 'Administrator' to log on
- 3) Set the display to:
 - A) 800 x 600 (1600 x 600 for dual display, when both displays are connected)
 - B) Change the "Color quality" setting to "Medium (16 bit)"
- 4) Set the 'Administrator' password to admin:
 - A) START, CONTROL PANEL, USER ACCOUNTS, ADMINISTRATOR
 - B) Select "Create a password"
- 5) Set up the computer name and workgroup:
 - A) START, CONTROL PANEL, PERFORMANCE AND MAINTENANCE
 - B) Choose the SYSTEM icon, select the COMPUTER NAME tab
 - C) Click on the CHANGE button
- 6) Edit the Host file in C:\WINDOWS\SYSTEM32\DRIVERS\ETC
- 7) Set the IP address as needed:
 - A) START, CONTROL PANEL, NETWORK AND INTERNET CONNECTIONS
 - B) Select the NETWORK CONNECTIONS icon
 - C) Double click on LOCAL AREA CONNECTION
 - D) On the GENERAL tab click on the PROPERTIES button
 - E) Select INTERNET PROTOCOL (TCP/IP), click on the PROPERTIES button
 - F) Set the IP Address and the Subnet Mask
- 8) Patch the registry to allow for auto logon (see Microsoft's knowledge base article Q315231, go to the following url to obtain this document – <http://support.microsoft.com/default.aspx?scid=http://support.microsoft.com:80/support/kb/Articles/q315/2/31.asp&NoWebContent=1>)

V8.4.2-63 & V8.0.6-050 OPOS Installation for Windows XP Embedded

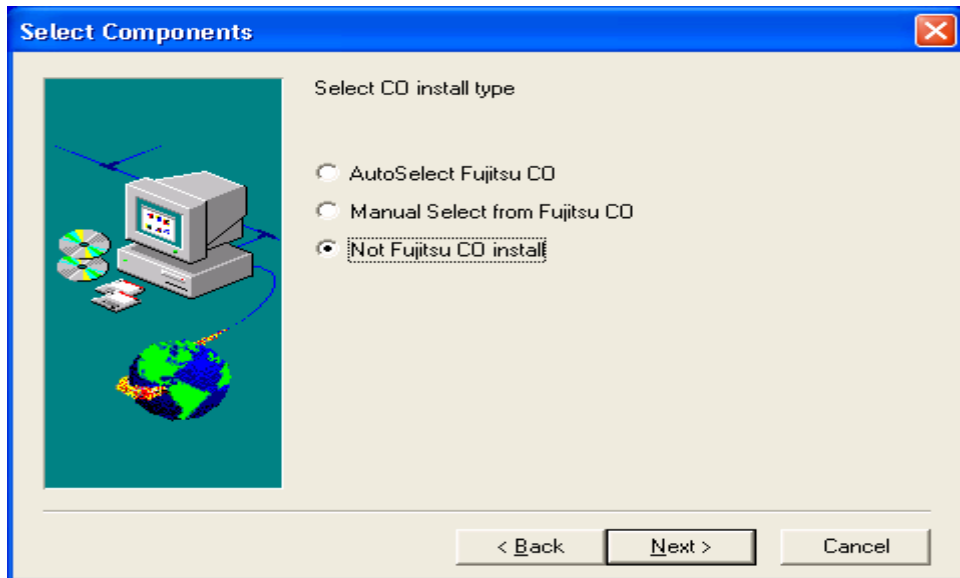
- 1) Use Windows Explorer and go to C:\DRIVERS\OPOS\FJOPOS(1.3.6)
- 2) Click on SETUP and then click on NEXT



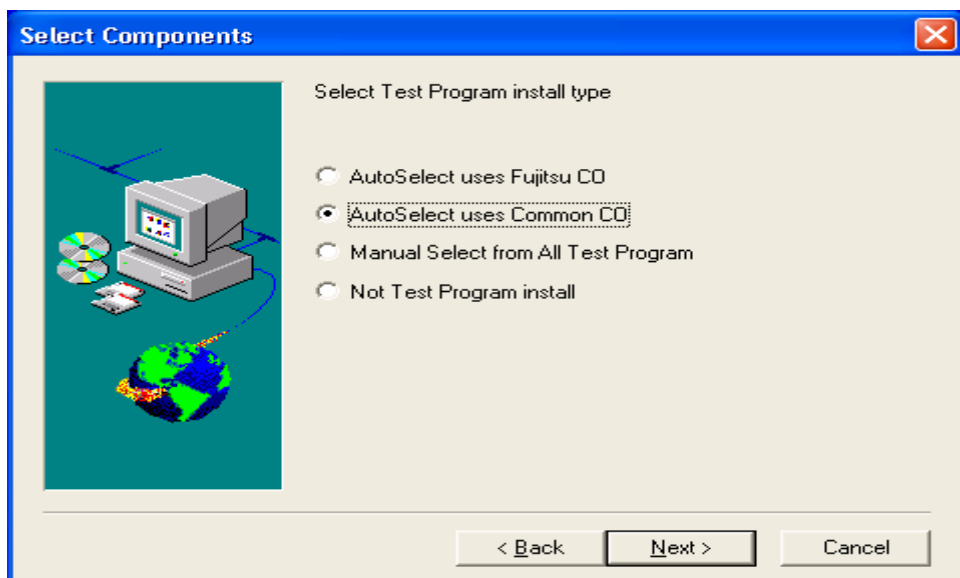
- 3) Select POS/PC Keyboard(133PQ), Keylock and MSR; then click on NEXT



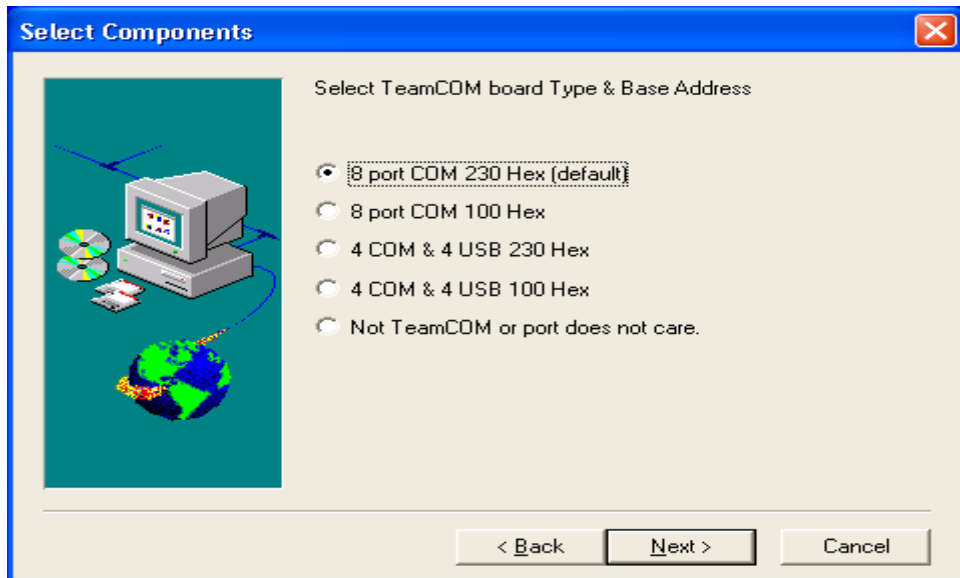
- 4) For the screen 'Select CO install type' select "Not Fujitsu CO install" and click on NEXT



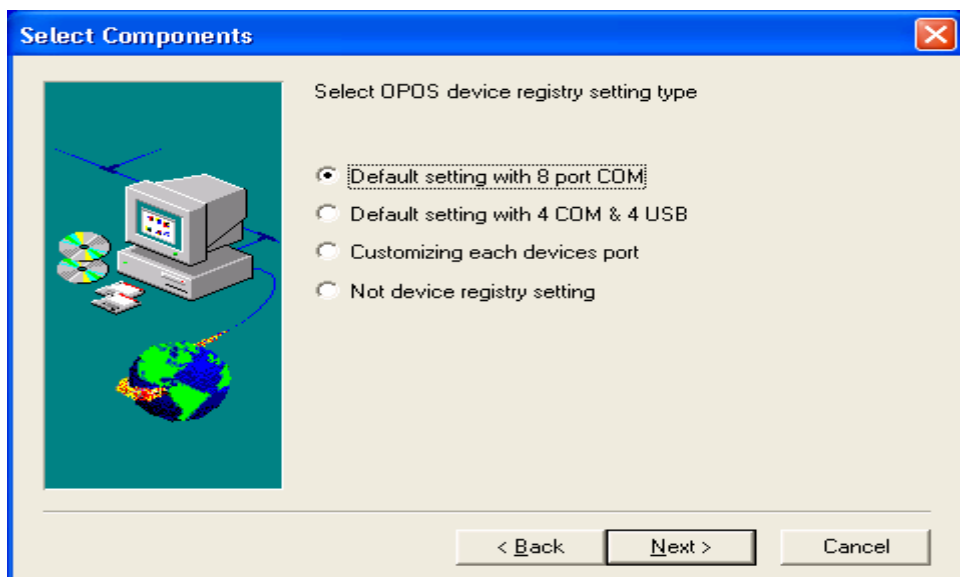
- 5) For the screen 'Select Test Program install type' select "Auto Select uses Common CO" and click on NEXT



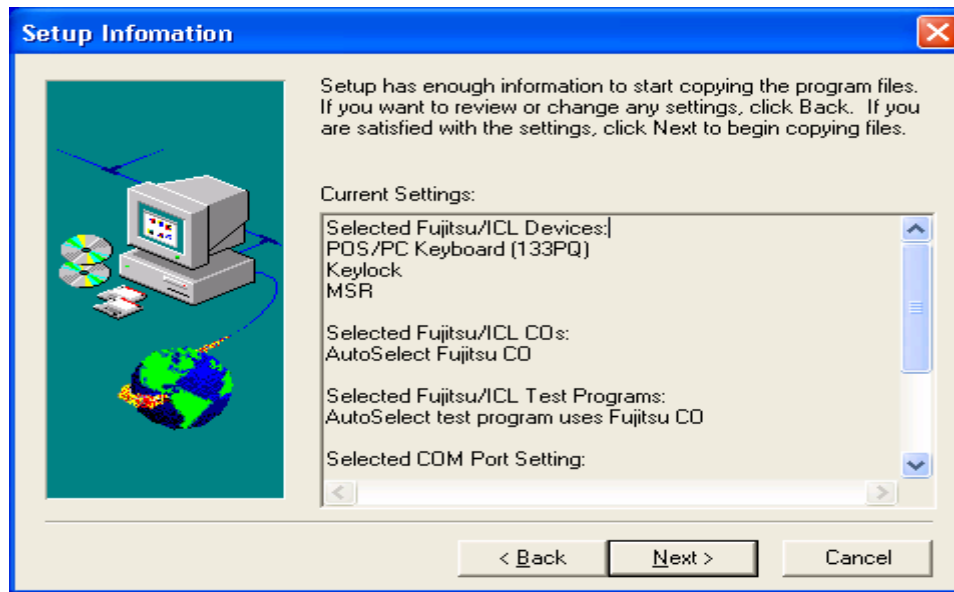
- 6) For the screen 'Select TeamCOM board Type & Base Address' select "8 port COM 230 Hex(default)" and click on NEXT (Note: Do NOT select the USB settings as this configuration has not been validated with ISS45 at this time)



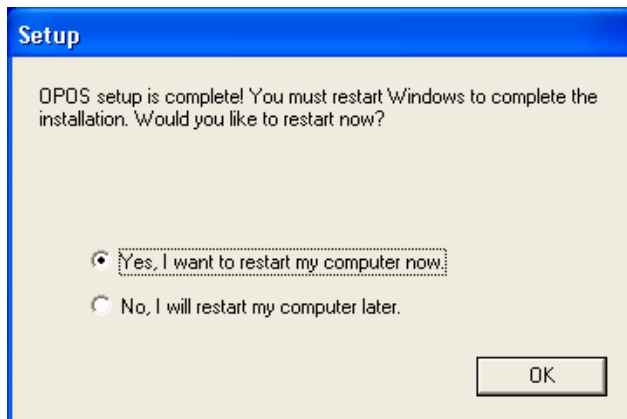
- 7) For the screen ‘Select OPOS device registry setting type’ select “Default setting with 8 port COM” and click on NEXT (Note: Do NOT select the USB settings as this configuration has not been validated with ISS45 at this time)



- 8) Verify all selections and click NEXT

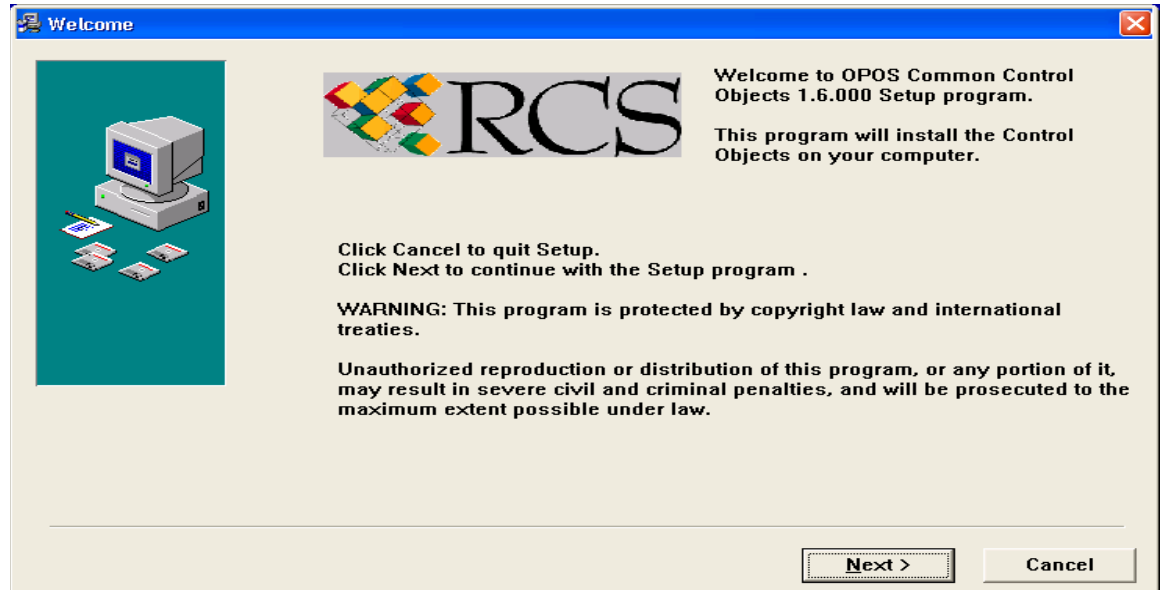


9) At the Reset screen click on OK

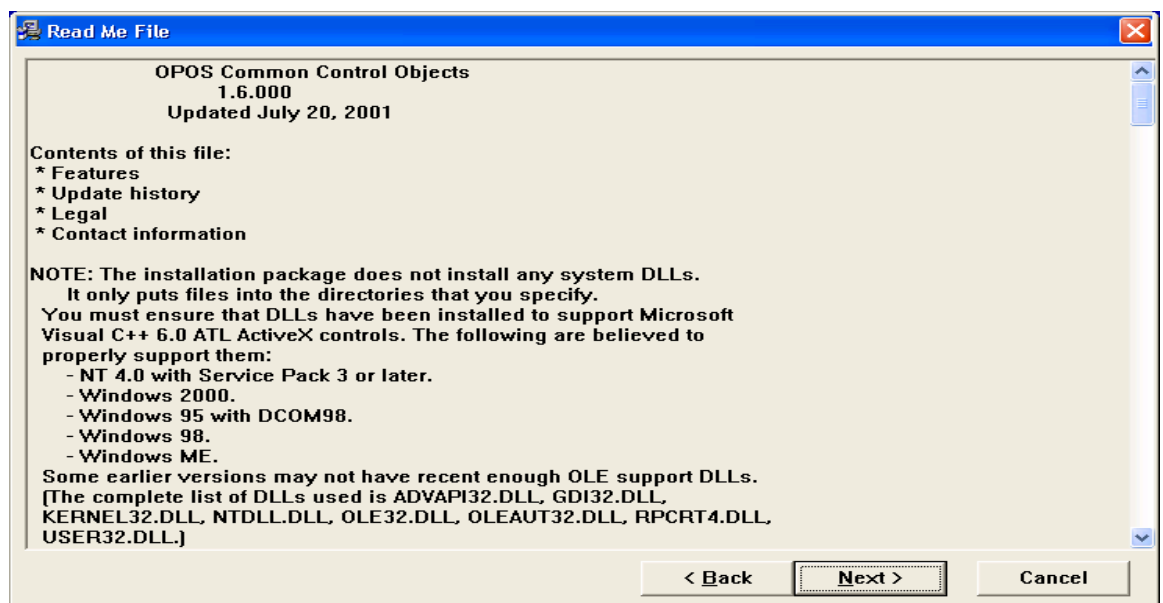


RCS OPOS Common Control Objects Installation for Windows XP Embedded

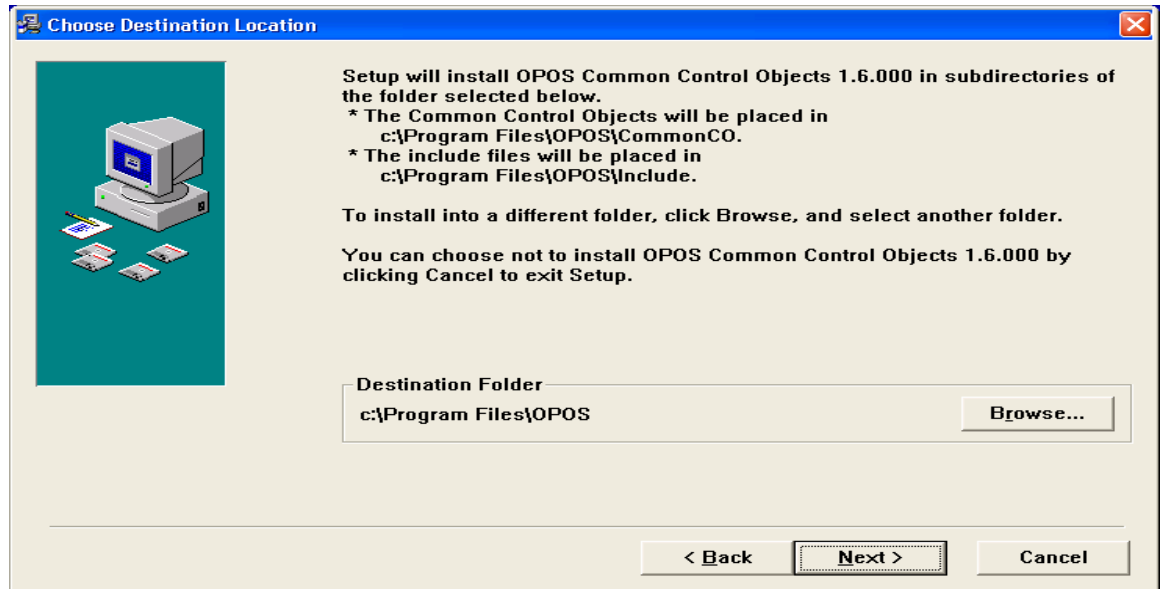
- 1) Insert either the V8.4.2_50 or the V8.0.6.3_50 CD into the CD-ROM drive
- 2) Use Windows Explorer to run OPOSTP2K\RCS\OposCCOs-1_6_000.exe
- 3) When the Welcome screen appears click on NEXT



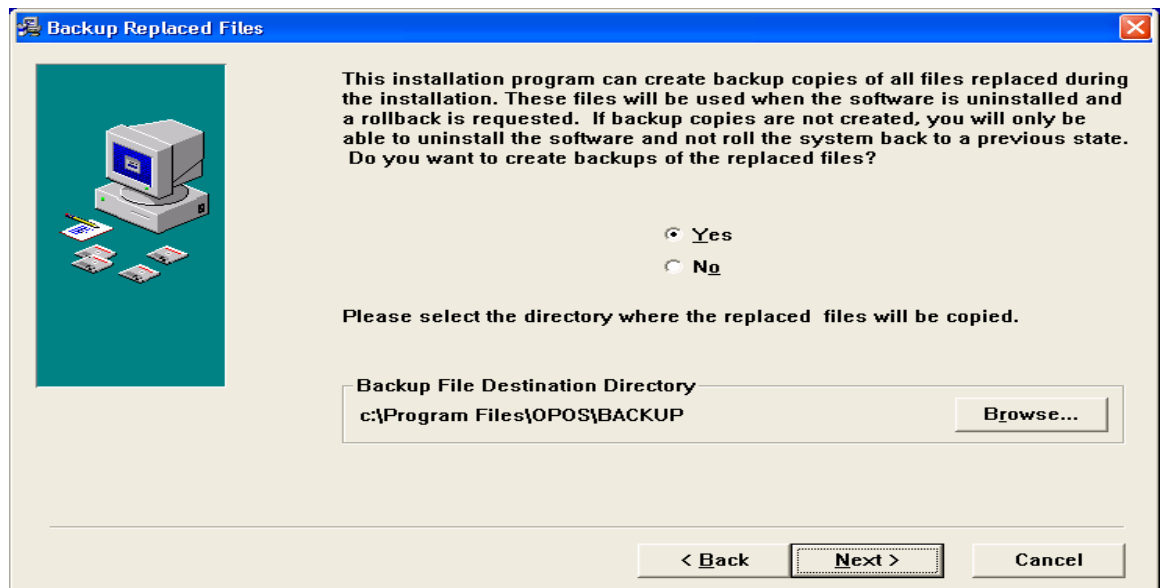
- 4) Click NEXT on the 'Read Me File' screen



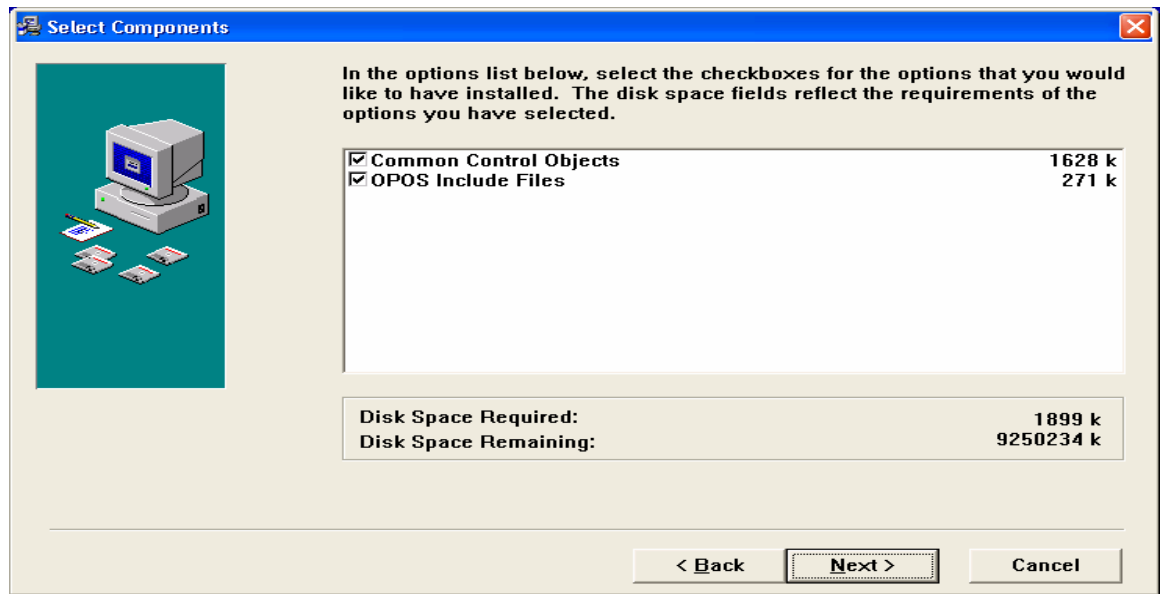
5) Use the default destination location and click on NEXT



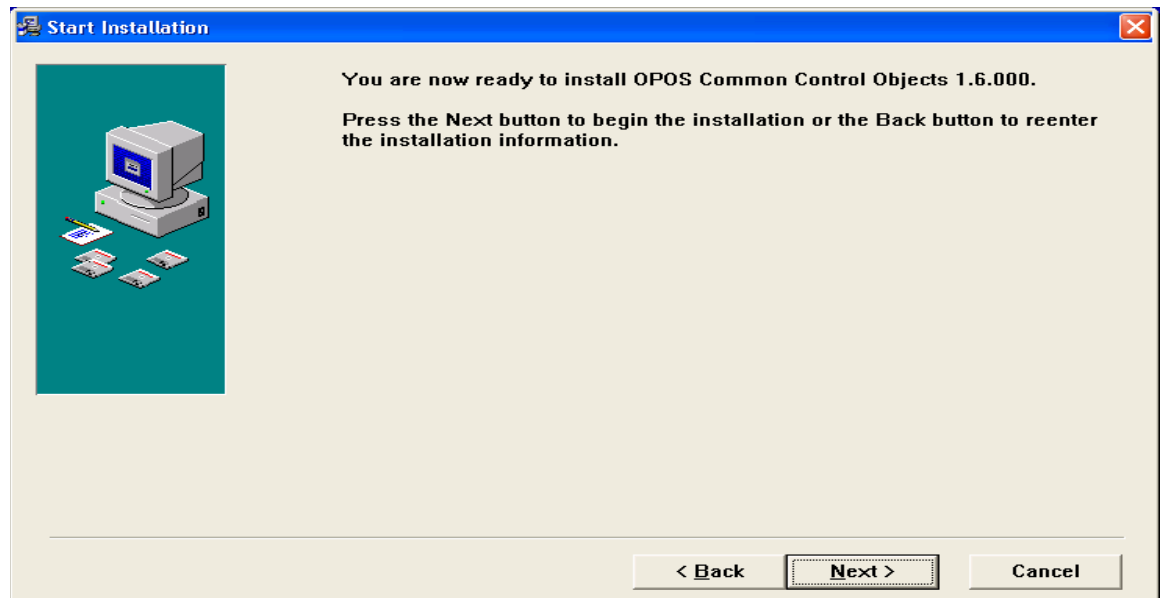
6) On the 'Backup Replaced files' screen insure that 'Yes' is selected and click on NEXT



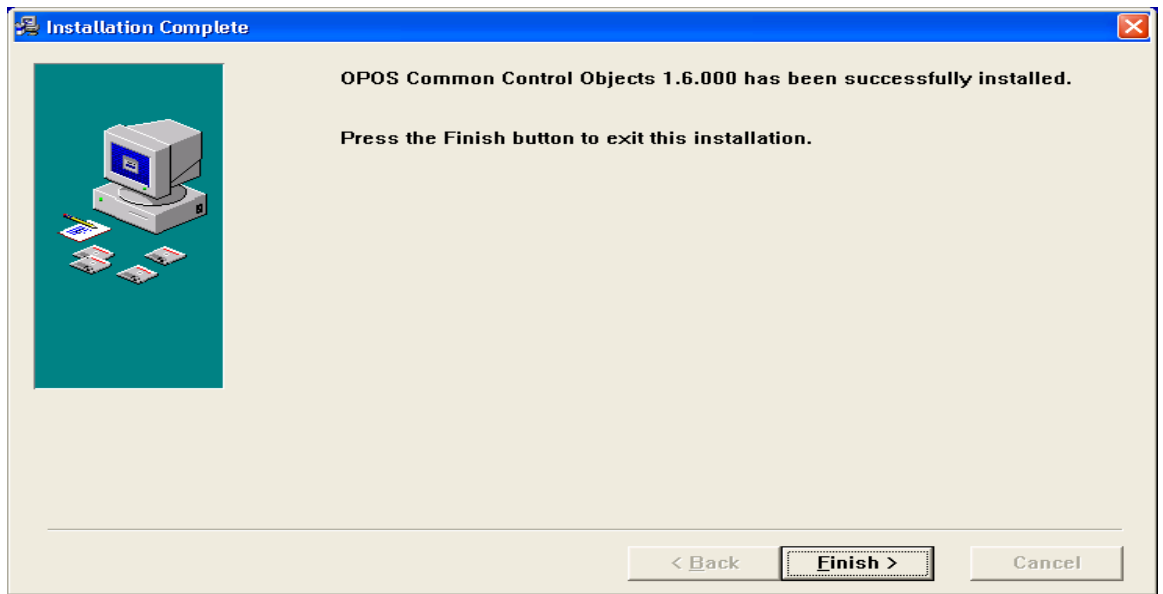
7) On the 'Select Components' screen insure that both options are selected and click on NEXT



8) On the 'Start Installation' screen click on NEXT



9) On the 'Installation Complete' screen click on FINISH



V8 Configuration Settings for TP2K OPOS

- 1) Go to System Administration| POS Setup| POS Configuration, select the POST you wish to configure
- 2) On the WinPOS H/W tab, set the Keyboard type to 'ICL Post KDB' and check the box 'Use OPOS'

The screenshot shows the 'Post Configuration' dialog box with the following settings:

- POS Number: 1
- POS Type: TeamPOS & TeamCOM
- Active till:
- General: Generate sound from: PC Speaker, Battery Backup:
- Keyboard: Keyboard type: ICL Post KBD, Use OPOS: 2X20 Keyboard Display:
- Drawer: Drawer type: None, Use OPOS: Dual Drawer:
- Scanner1: Port: Use OPOS: Baud Rate: None, Parity: None, Data bits:
- Scanner2: Port: Use OPOS: Baud Rate: Parity: Data bits:
- Customer Display: Type: None, Port: Use OPOS: Baud Rate: None
- Scale: Port: 4, Use OPOS: Type: None, Baud Rate: None, Data bits: 7, Parity: None, Display constant weight:
- Printer: Type: EPSON H6000, Baud Rate: 9600, Port: 3, Use OPOS: MICR Reader in use: Printer with partial cut: Check flip feature:

- 3) On the E-Ticket-OPOS tab:
 - A) Set the 'OPOS MSR Driver Name' as: fjmsrso
 - B) Check the 'Use OPOS MSR' box
 - C) Set the 'OPOS Keyboard Driver Name' as: fjkbdso
 - D) Set the 'OPOS Keylock Driver Name' as: fjkklso
 - E) Check the 'Use OPOS Keylock' box

Post Configuration

POS Number: POS Type: Active till

General | WinPOS H/W | Non WinPOS 1 | Non WinPOS 2 | Auth. - EFT - I/F | E-Ticket - OPOS

E-Ticket

E-Ticket Active Virtual POS Number: Virtual Cashier Number:

OPOS

OPOS Printer Driver Name:

OPOS Line Display Driver Name:

OPOS Drawer Driver Name:

OPOS Scanner Driver Name:

OPOS Scale Driver Name:

OPOS MICR Driver Name: Use OPOS MICR

OPOS MSR Driver Name: Use OPOS MSR

OPOS Keyboard Driver Name:

OPOS KeyLock Driver Name: Use OPOS KeyLock

OPOS Coin Dispenser Driver Name: Use OPOS Coin Dispenser

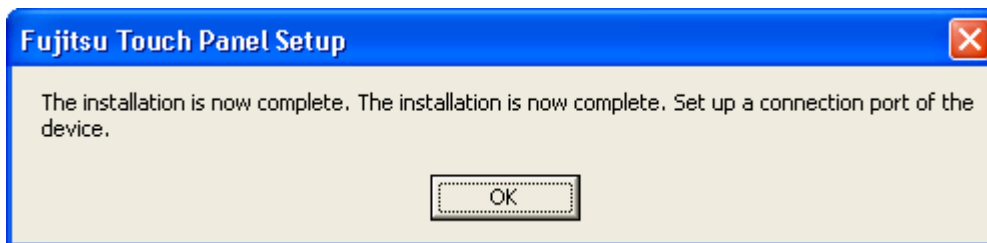
⏪ ⏩ ⏴ ⏵ OK Cancel Apply

Single Touch Screen Installation on a TP2K with Windows XP Embedded

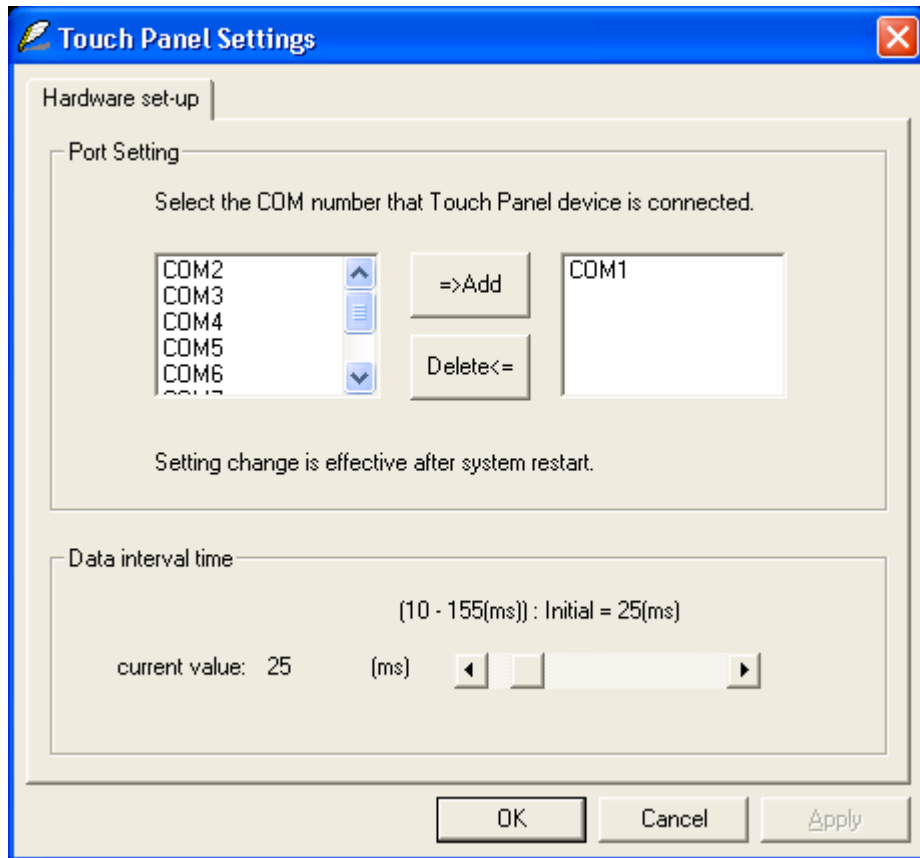
- 1) Open Windows Explorer and go to
C:\DRIVERS\WINXP\TOUCH(1.0L12)\OPT2
OPT1 = Second touched panel is given priority
OPT2 = Primary monitor is given priority
OPT3 = No priority is given
- 2) Click on SETUP, select '1, Non Plug and Play Device', and then click on OK



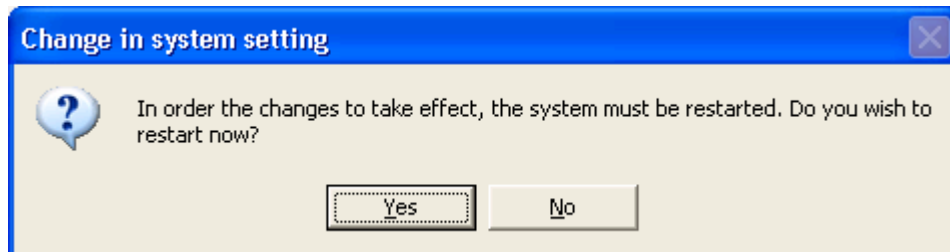
- 3) When the 'The install is now complete....' screen appears click on OK



- 4) The 'Touch Panel Settings' screen will appear and COM1 should be selected, click on OK

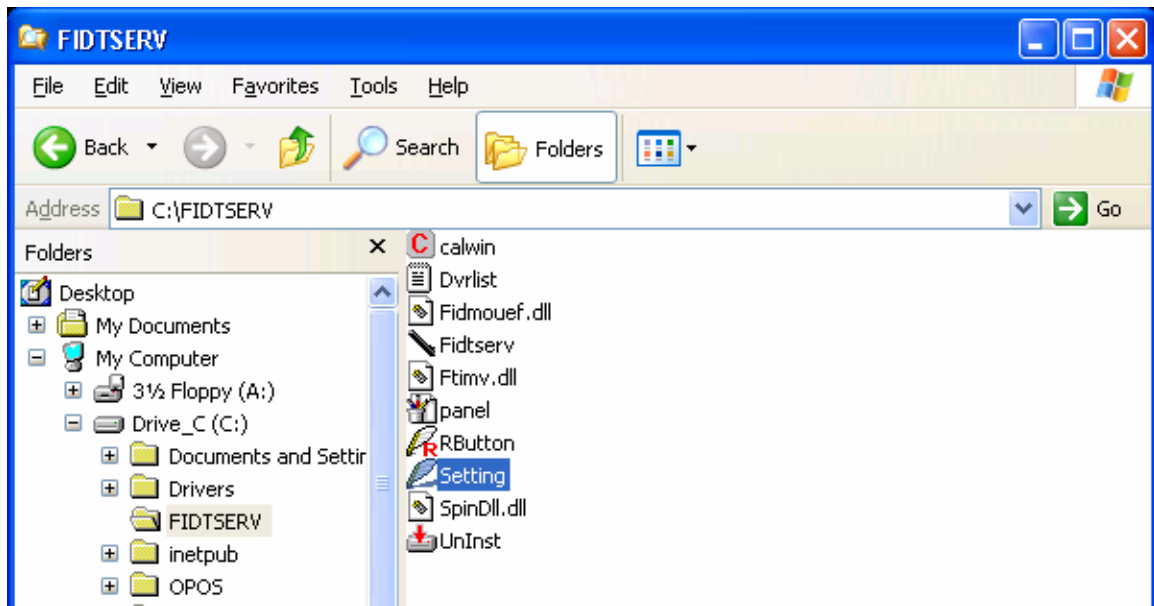


5) Click on OK to restart the system

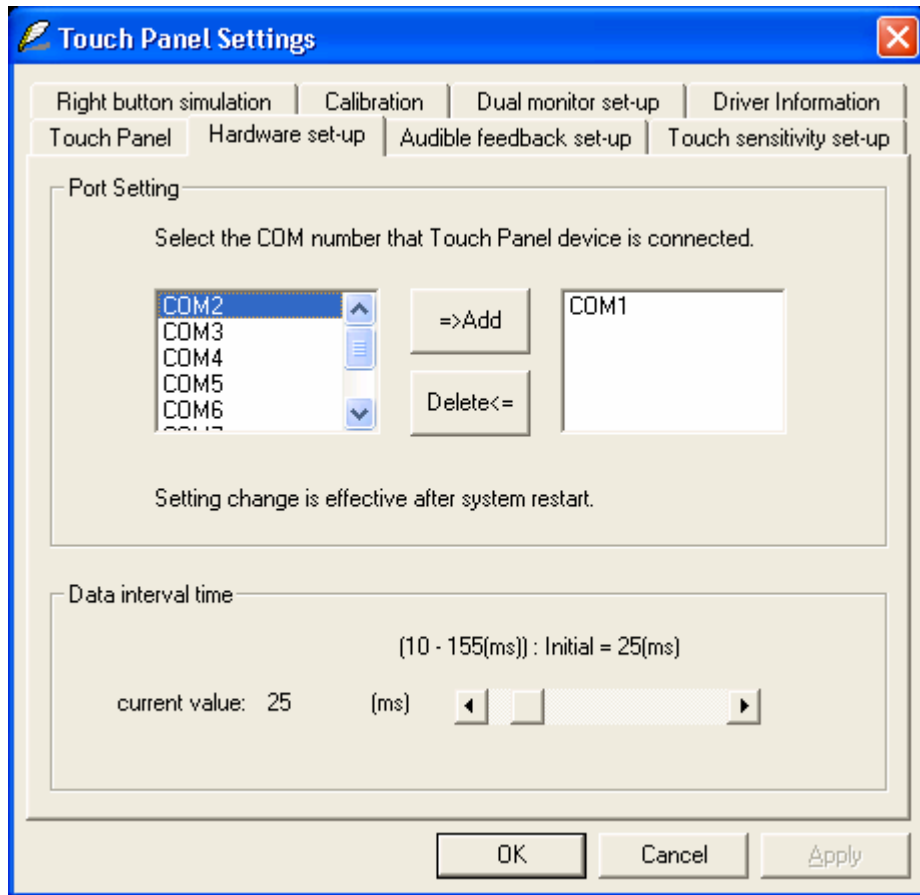


Dual Touch Screen Installation on a TP2K with Windows XP Embedded

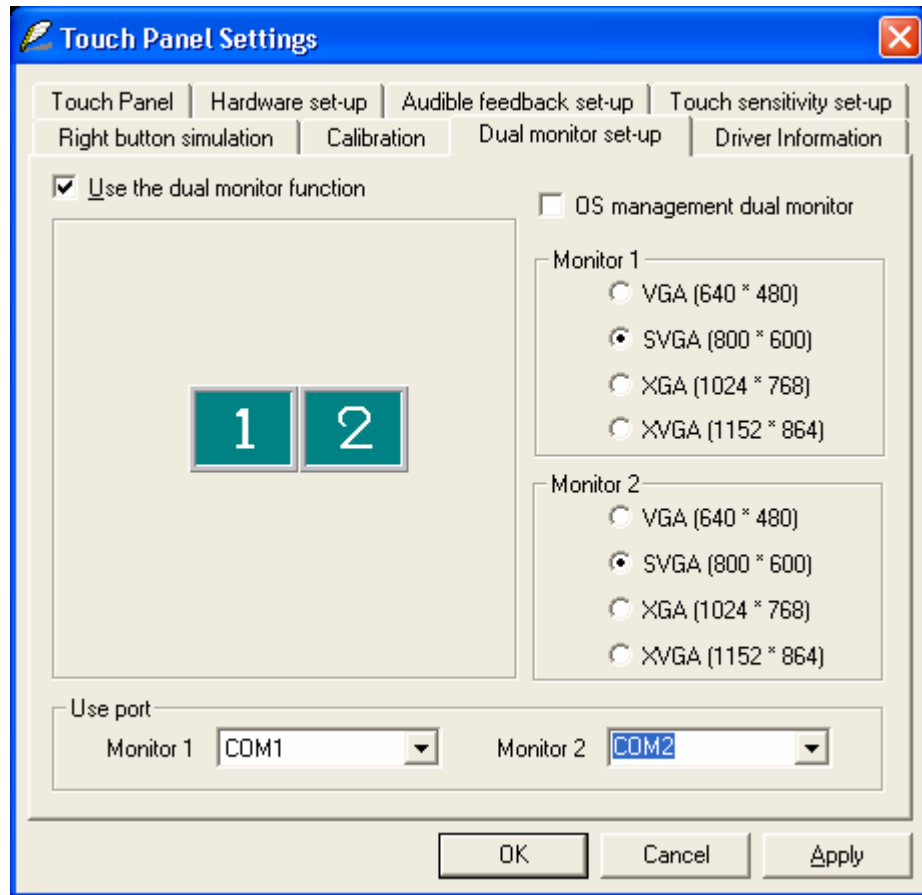
- 1) Open Windows Explorer, go to C:\FIDTSERV and click on SETTING



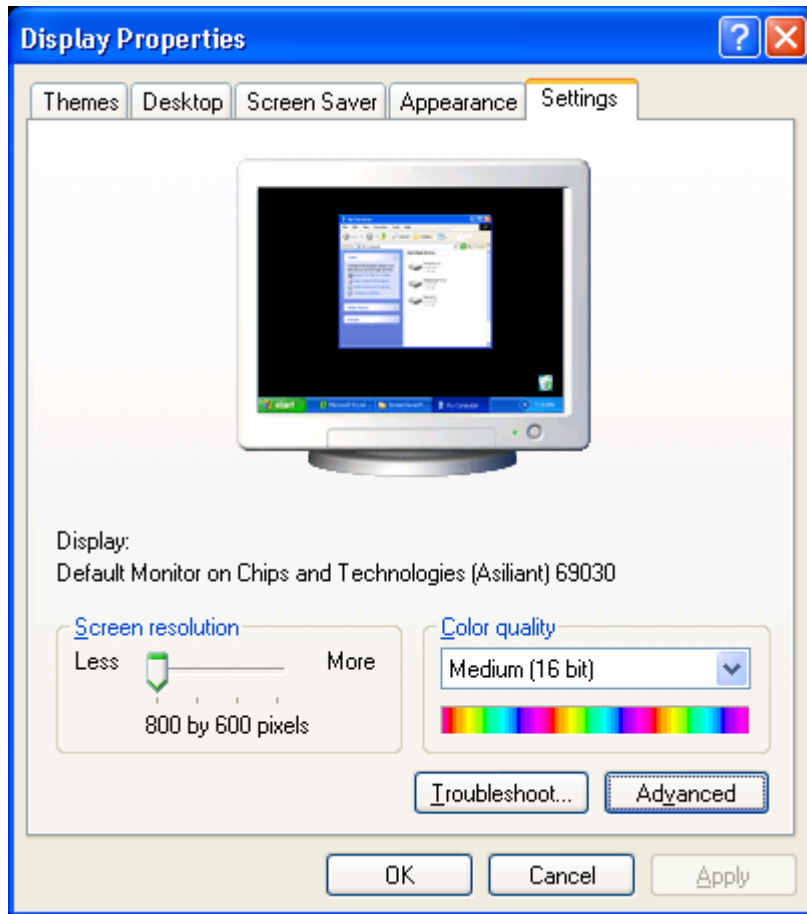
- 2) The 'Touch Panel Settings' screen will appear, select the 'Hardware setup' tab, click on COM2, click on the ADD button and then click on APPLY



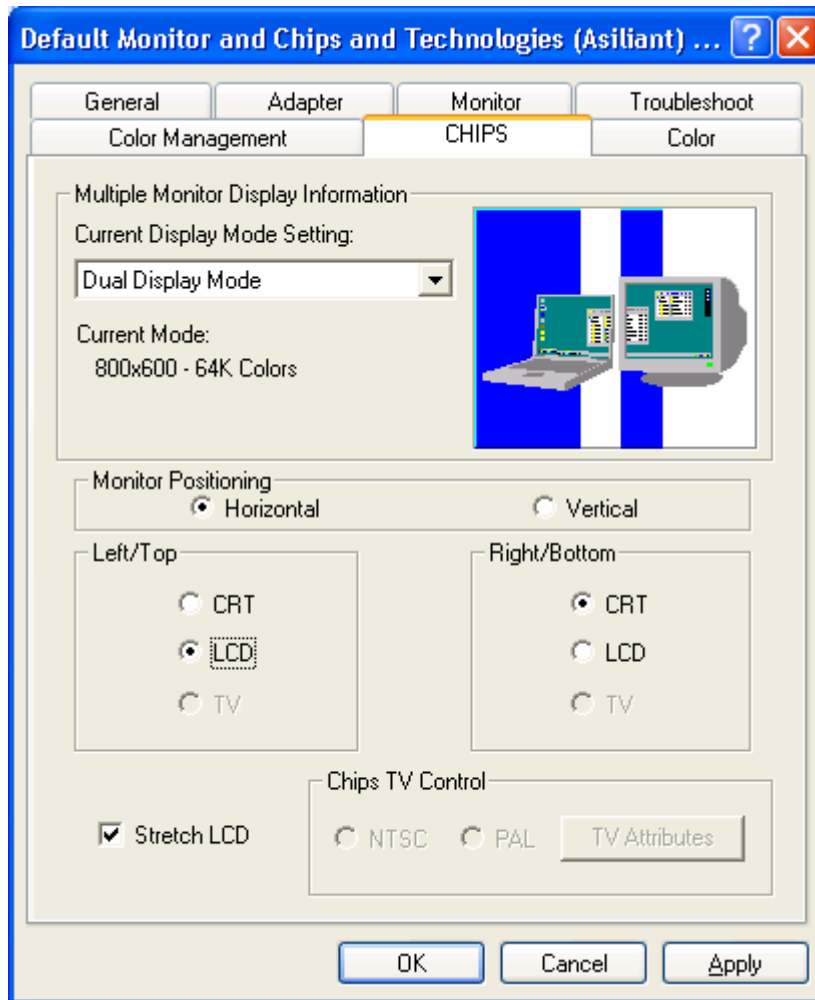
- 3) Close all windows and restart the system
- 4) Open Windows Explorer, go to C:\FIDTSERV and click on SETTING, select the 'Dual monitor setup' tab, place a check mark in the box labeled "Use multiple monitor function", at the lower right corner set 'Monitor 2' to COM2, click on APPLY



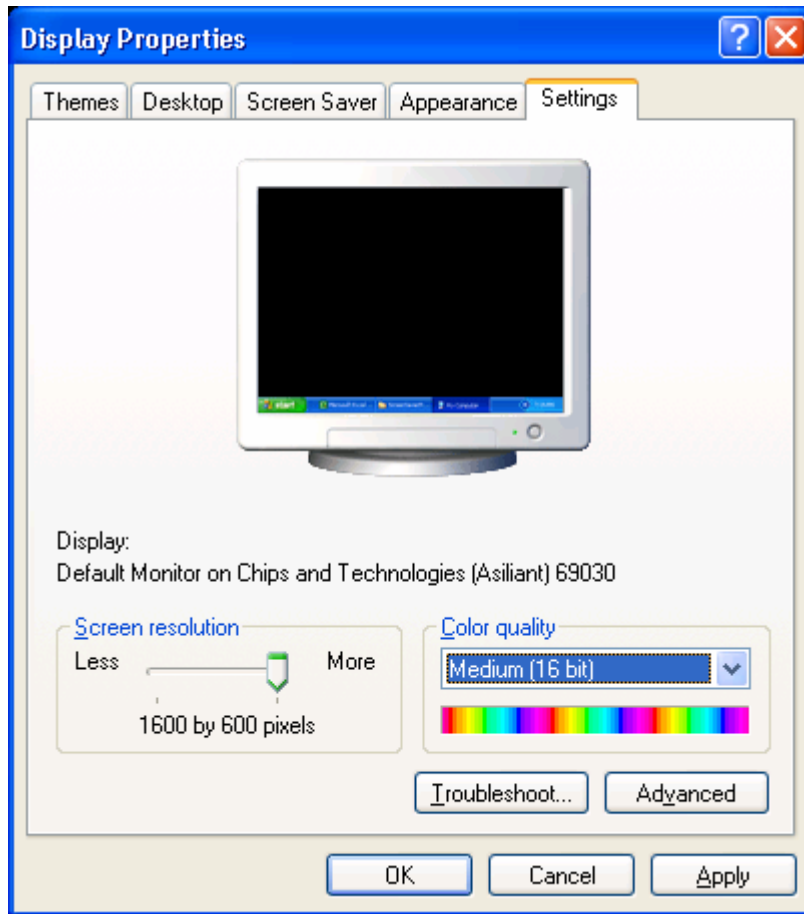
- 5) Close all windows and restart the system
- 6) Right mouse click on a blank spot on the desktop, click on Properties, the Display Properties window will appear, select the 'Settings' tab, click on the ADVANCED button



- 7) The 'Default Monitor and Chips and Technologies' window will appear, select the 'CHIPS' tab, for the 'Current Display Mode Setting' select "Dual Display Mode", place a check mark in the box labeled "Stretch LCD", in the "Left/Top" box click on 'LCD, in the "Right/Bottom" box click on 'CRT' and click on APPLY

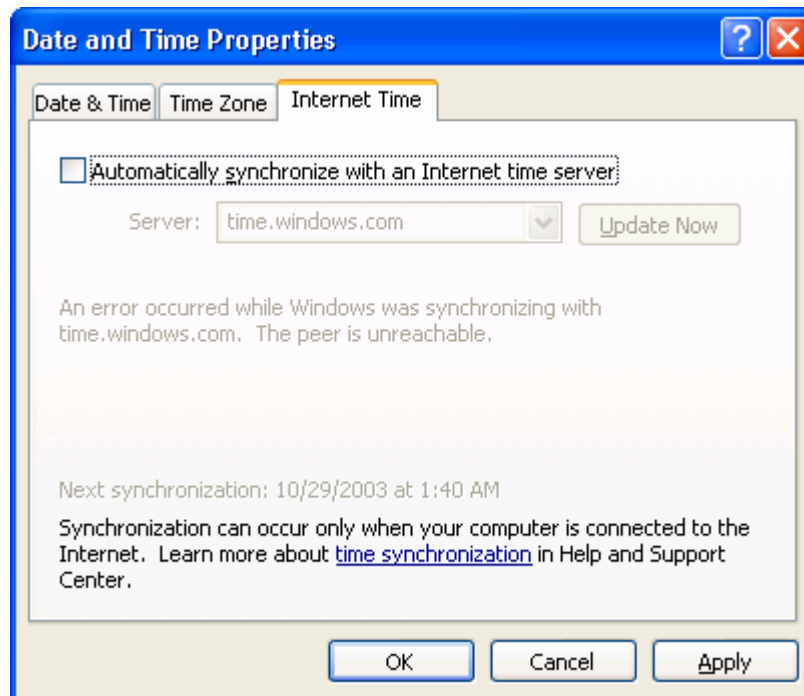


- 8) Click on OK four (4) times and restart the system
- 9) Right mouse click on a blank spot on the desktop, click on Properties, the Display Properties window will appear, select the 'Settings' tab, set the 'Screen resolution' to "1600 x 600" and the 'Color quality' to "Medium (16 bit)", and click on APPLY



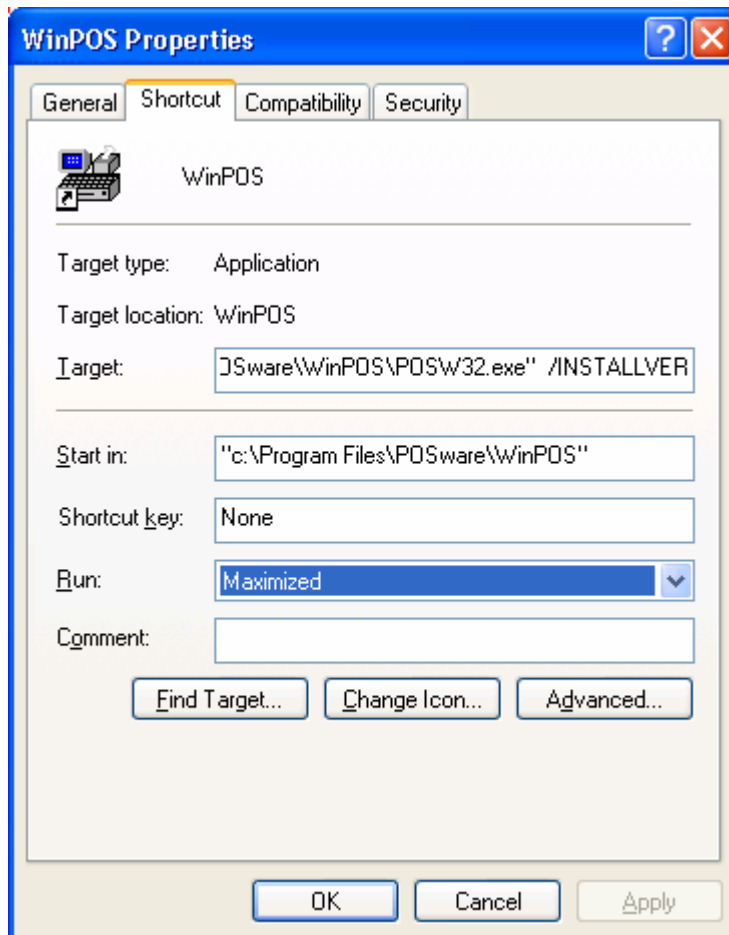
Time Change Setup for XP Embedded

- 1) Go to Control Panel| Date, Time, Language and Regional Options| Change the date and time
- 2) Select the Internet Time tab
- 3) Remove the check in the box marked “Automatically synchronize with an Internet time server” (Note: If this parameter is set you will see errors in the System section of the Event Viewer [Control Panel | Performance and Maintenance| Administrative Tools| Event Viewer] for W32Time approximately every four hours)



WinPOS Startup Problem with XP Embedded

- 1) Select Programs| ISS45| WinPOS| WinPOS
- 2) Right click on WinPOS
- 3) Select Properties
- 4) Change “Run: Minimized” to “Run: Maximized”
- 5) Do the same for any shortcuts you may have created for WinPOS
- 6) Close all open screens



© StoreNext Retail Technologies LLC 2003

StoreNext Retail Technologies LLC endeavors to ensure that the information in this document is correct and fairly stated but does not accept liability for any error or omission.

The development of StoreNext products and services is continuous and published information may not be up to date. It is important to check the current position with StoreNext. This document is not part of a contract or license save insofar as may be expressly agreed.

**StoreNext Retail Technologies LLC
1250 East Arques Avenue, M/S 363
Sunnyvale, CA 94085**

**P/N 89000161
PIN 45001/074**