

## Technical Bulletin

### ISS45 Dual Cash Drawer Setup with NCR RealPOS 60/82XRT

ISS45-TECH-13:08  
April 12, 2013

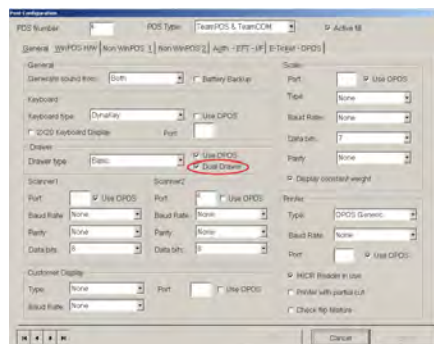
ISS45 V8 8.1.6.0-110 (and forward) supports dual drawers with the NCR RealPOS 60 and RealPOS 82XRT. This bulletin supplements the ISS45 V8 Install Guide for NCR hardware.

#### INSTRUCTIONS

The dual cash-drawer cable (NCR-1416-C372-0006) is required. The stem of this Y-cable attaches to the NCR e-box I/O panel, and the two branch connectors attach to the cash drawer cables.

Note: Only OPOS is supported and cash drawer(s) are only supported through the Cash Drawer port on the POST. There is no support for cash drawer through any printer.

1. [Click Here](#) and download **NCR\_OPOS\_4\_ISS45.zip** from the Retalix dealer support website.
2. Extract contents to a folder and double click **cd2.reg** to update the Registry for dual drawer support.
3. On the MFS in POS Configuration - WinPOS H/W Tab, select "Dual Drawer" as shown below, in addition to "Use OPOS."



4. In POS Configuration - E-Ticket - OPOS Tab, Enter the text **NCRCashDrawer.2** in the field, "OPOS Drawer 2 Driver Name" – in addition to the driver name shown under OPOS Drawer 1 Driver Name.

