

Technical Bulletin

ISS45 V8 M-Dot Setup and Configuration

ISS45-TECH-10:20 Issue 4
October 21, 2010

Outlined below are the steps to set up and configure the ISS45 M-Dot Network interface with ISS45 V8.

Note: these instructions pertain to the V8 M-Dot interface as released with 8.1.5.1-050 (Summer 2010). For subsequent major releases, please see the ISS45 V8 Installation Guide for current/updated information.

ISS45 SETUP

The following General System Parameters will need to be set:

In the Store\Technical\3rd Party Coupon Providers\M-Dot Network folder

- M-Dot Network in system – This parameter defines if M-Dot Network coupons are to be supported. It should be set to “Yes”.
- M-Dot Network Retailer ID – This parameter defines the Retailer ID assigned to the retailer by M-Dot Network. It should be set to the value assigned by M-Dot Network.
- M-Dot Network Account Number – This parameter defines the account number assigned to the retailer by M-Dot Network. It should be set to the value assigned by M-Dot Network.
- M-Dot Network Key – This parameter defines the key assigned to the retailer by M-Dot Network. It should be set to the value assigned by M-Dot Network.
- M-Dot Network Server Timeout – This parameter specifies how long (in seconds) that the WinPOS application should wait for a response from the M-Dot Network server. The default value is 15 seconds.
- M-Dot Network Offline Template – This parameter defines the name of the template to use to display that M-Dot Network is off-line on the receipt. (Released template is _CONSMR_OF it should be copied to CONSMR_OF in the TEMPLATE.QDX file). It should be set to the name of template in the TEMPLATE.QDX file.
- M-Dot Network Consumer ID Template – This parameter defines the name of the template to use to display the consumers M-Dot Network account ID number on the receipt (Released template is _CONSMR_ID it should be copied to CONSMR_ID in the TEMPLATE.QDX file). It should be set to the name of template in the TEMPLATE.QDX file. It should be set to the name of template in the TEMPLATE.QDX file.

This document and information are supplied to StoreNext Retail Technologies personnel and third parties to assist them in doing business with StoreNext. They are not to be used or distributed for any other purpose.

StoreNext Retail Technologies LLC endeavors to ensure that the information in this document is correct and fairly stated, but does not accept liability for any error or omission.

System Parameters Maintenance

Parameter View

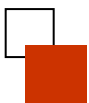
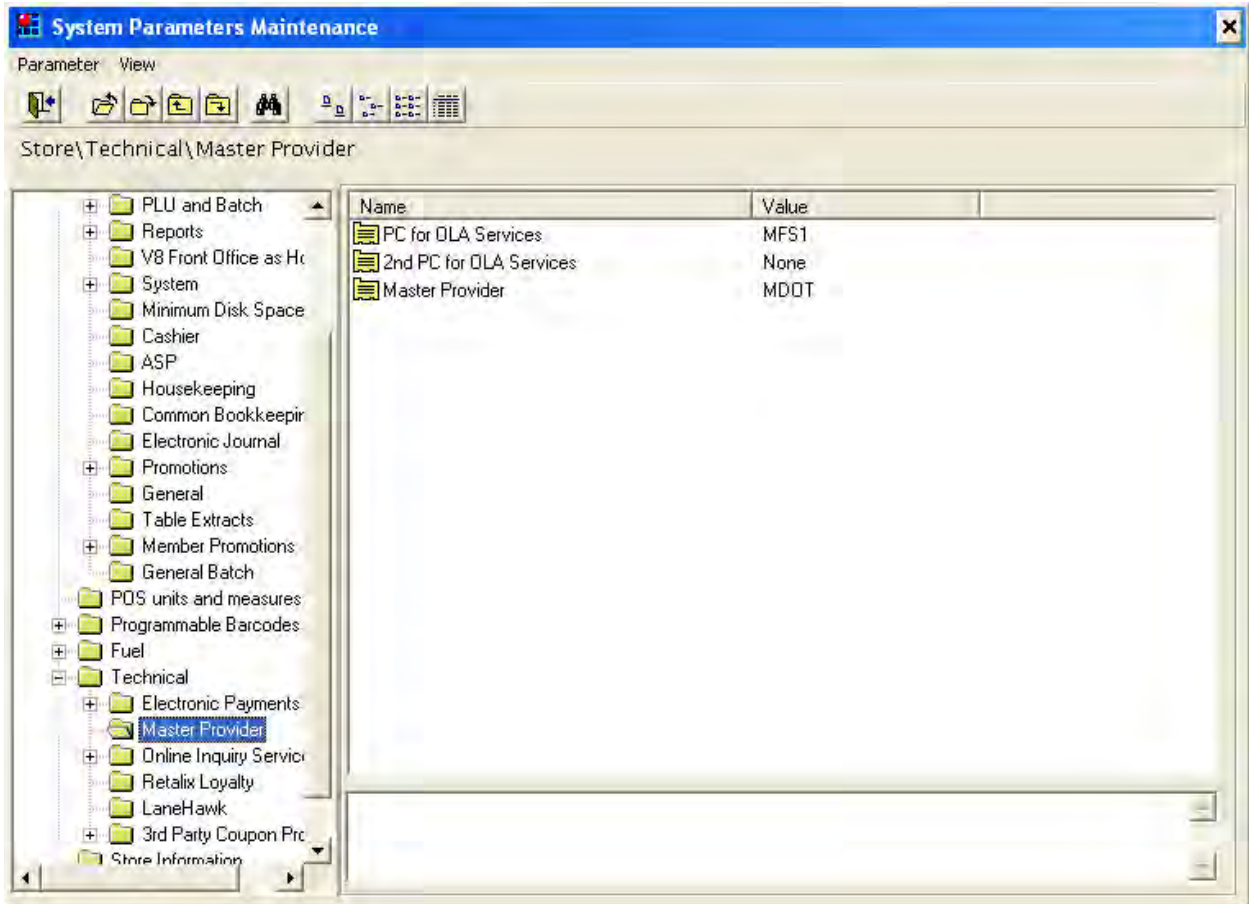
Store\Technical\3rd Party Coupon Providers\M-Dot Network

Name	Value
M-Dot Network In system	Yes
M-Dot Network Retailer ID	12
M-Dot Network Account Number	
M-Dot Network Key	
M-Dot Network Server Timeout	15
M-Dot Network Offline Template	CONSMR_OF
M-Dot Network Consumer ID Template	CONSMR_ID



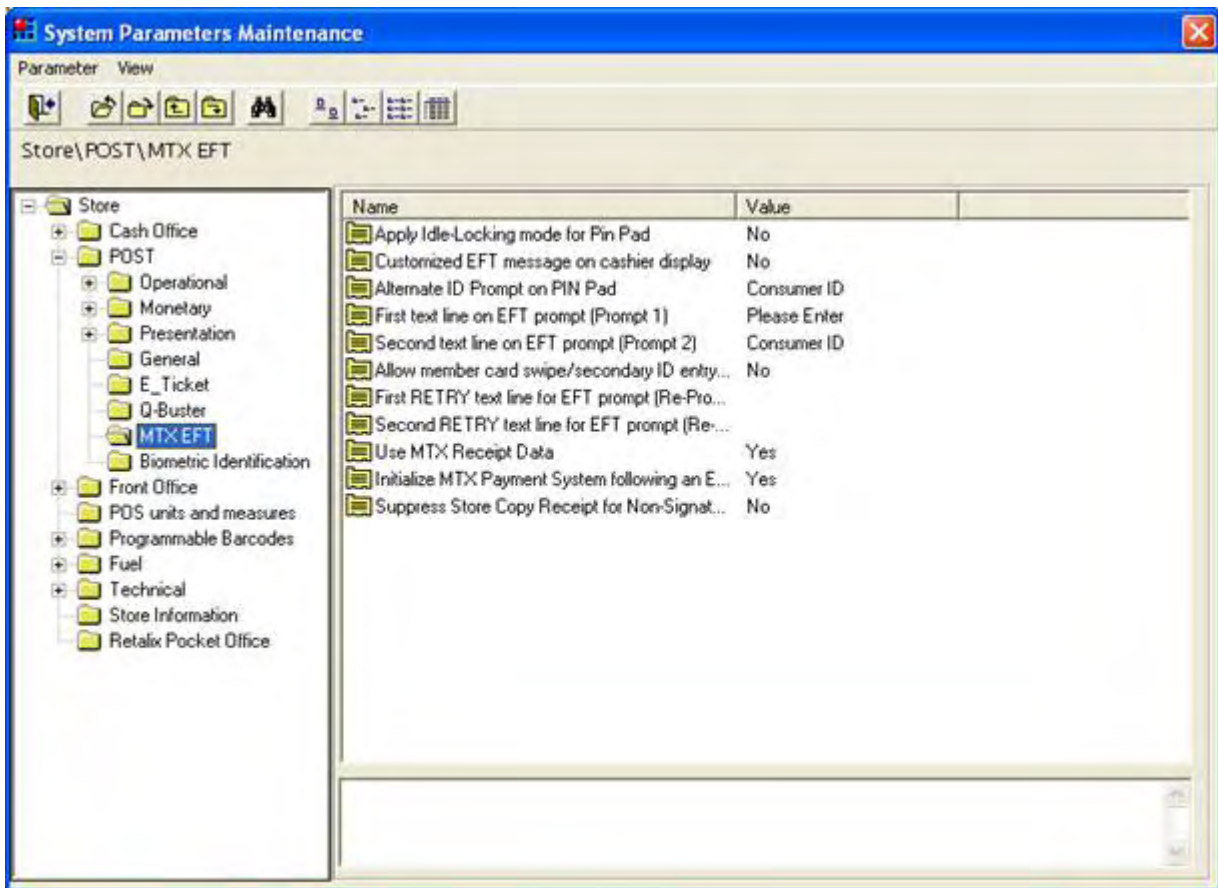
IN THE STORE\TECHNICAL\MASTER PROVIDER FOLDER:

- PC for OLA Services – This parameter should be set to “MFS1”
- Master provider – This parameter should be set to “MDOT” (or any other, but not NONE)



IN THE STORE\POST\MTX EFT FOLDER:

- Alternate ID Prompt on PIN Pad – This parameter was formerly called “Prompt for member card or secondary ID at Pin Pad”. It has been renamed and now can be set to “None”, “Member Card or Secondary ID”, or “Consumer ID”. If prompting of consumer ID is wanted at the PIN Pad it should be set to “Consumer ID”.
- First text line on EFT prompt (Prompt 1) – When the parameter ‘Alternate ID Prompt on PIN Pad’ is set to a value other than “None”, this parameter will determine what text will be displayed on the Pin Pad's first line of text.
- Second text line on EFT prompt (Prompt 2) – When the parameter ‘Alternate ID Prompt on PIN Pad’ is set to a value other than “None”, this parameter will determine what text will be displayed on the Pin Pad's second line of text.



If a retailer wishes to allow their member or frequent shopper number to be used as identification for M-Dot then the flag “Use card for 3rd party coupons” in Card Range Maintenance must be set.

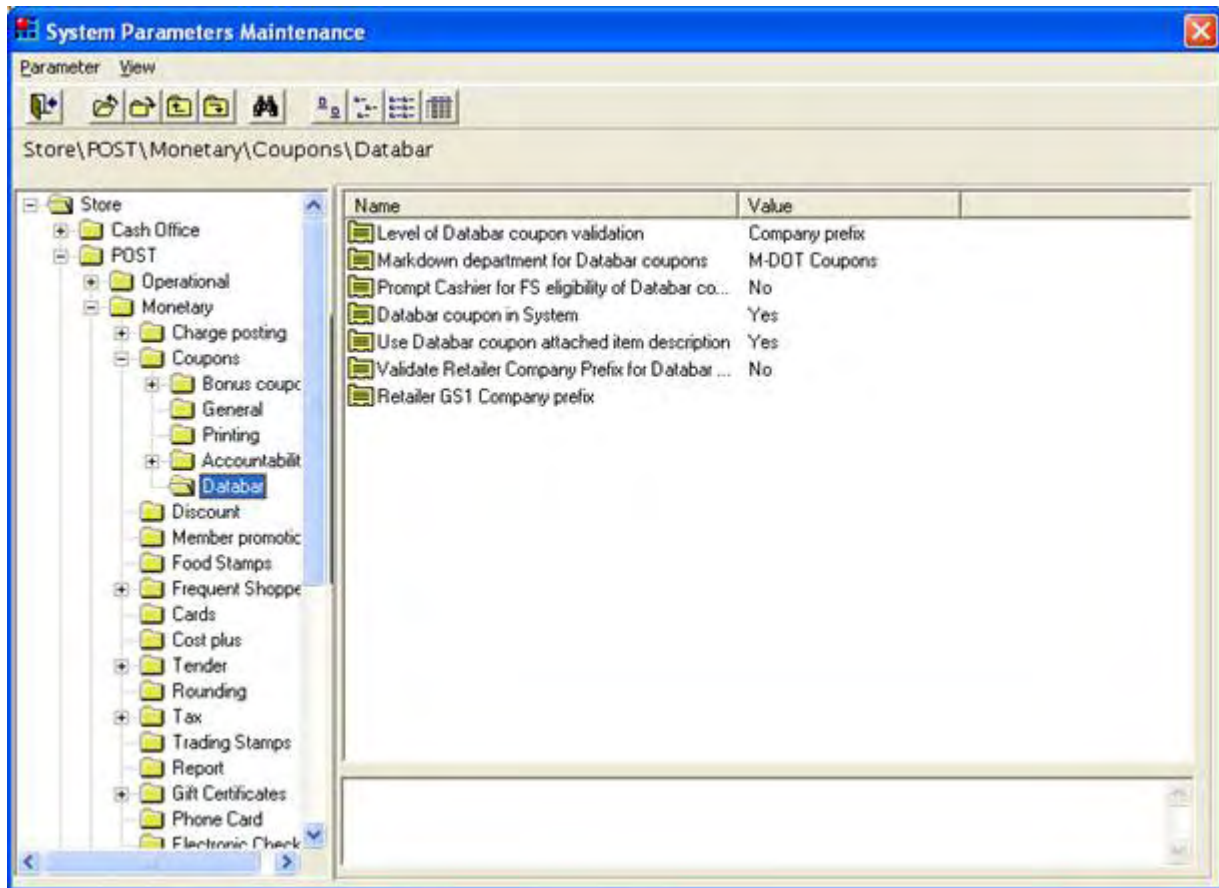
The screenshot shows the 'Card Range Maintenance' dialog box with the following details:

- Card Range No: 2
- Description: Partners
- Active:
- Tab: Authorization
- IIN: Start: 41888000, End: 41888999
- Card Validation: Validation: Retailer Pgms, Continue on validation failure:
- Linked Tenders: Tender 1-5 (dropdowns), Type (dropdown), Tender is: Credit, Debit, Tender Predefined
- Allow: Sales, Refunds, Purchase
- General: Card Usage (dropdown), Fly Buys:
- 3rd Party Coupons: Use card for 3rd party coupons



IN THE STORE\POST\MONETARY\COUPONS\DATABAR\ FOLDER:

- DataBar coupon in System should be set to “Yes”
- The Markdown department for DataBar coupons must be set to a department.



POS CHANGES

The new Keyboard function (1448) to prompt for the Consumer ID must be added to the Menusys file that is in use and or added to the Keyboard definition used by the POS terminal.

COMMPOINT CONFIGURATION

CommPoint will need the following configuration to enable the connection to the M-Dot Network host.

The CommPoint configuration files that will need to be checked/edited to enable communications with the M-Dot Network host are the file RSMDDispatcher.exe.config and SLMsgUploader.exe.config. Below is an example of the entries required highlighted for M-Dot Network. It should be noted that the example only shows a portion of an entire RSMDDispatcher.exe.config file each retailer may have a unique file for their environment. What is important is that the sections associated with M-Dot Network be added and configured as needed. The following is a link to a Wiki page that explains the settings in more detail: <http://10.10.0.26/SLwiki/index.php/RSMDDispatcher.exe.config>

Note: if you are unable to access the link above, a zip file with a static copy of this HTML is available: [click here](#).

RSMDISPATCHER.EXE.CONFIG FILE EXAMPLE:

```
<?xml version="1.0" encoding="utf-8"?>
<configuration>
  <configSections>
    <section name="CPWebService"
type="System.Configuration.DictionarySectionHandler,system,Version=1.0.3300.0,
Culture=neutral, PublicKeyToken=b77a5c561934e089, Custom=null" />
    <section name="LoopBack"
type="System.Configuration.DictionarySectionHandler,system,Version=1.0.3300.0,
Culture=neutral, PublicKeyToken=b77a5c561934e089, Custom=null" />
    <section name="LogManager"
type="Retailix.DPOS.Logging.LogManagerSectionHandler, Retailix.DPOS.Logging" />
  </configSections>
  <CPMDOT>
    <add key="AssemblyName"
value="CommPoint2.ClientProvider.MDOT.CpClientMDOTProvider" />
    <add key="TypeName"
value="CommPoint2.ClientProvider.MDOT.CpClientMDOTProvider" />
  </CPMDOT>
  <MDOT>
    <add key="OLProvider" value="CPMDOT" />
    <add key="OLExternalTargetApplicationName" value="MDOT" />
    <add key="OLHost" value="MDOTProvider" />
    <add key="OLMessageTimeout" value="15000" />
    <add key="UseResponseQueue" value="True" />
  </MDOT>
</configuration>
```



```

<MDOTProvider>
  <add key="Chain" value="1" />
  <add key="Branch" value="2" />
  <add key="MDOTUrl" value="http://174.129.204.23/mdot/redeem" />
  <add key="MDOTProxy" value="" />
  <add key="MDOTProxyUserName" value="" />
  <add key="MDOTProxyPassword" value="" />
  <add key="MDOTProxyDomain" value="" />
  <add key="MDOTLoginTimeout" value="10000" />
  <add key="MDOTWatchdogTimeout" value="20000" />
  <add key="MDOTOfflineWatchdogFrequency" value="60000" />
  <add key="MDOTWatchDogFrequency" value="60000" />
  <add key="MDOTDisableFlag" value="C:\PCMASTER\Flag\WSStop.flg" />
  <add key="MDOTRetryOnTimeoutException" value="True" />
  <add key="MDOTEnableWatchDog" value="False" />
  <add key="MDOTEnableOfflineWhenMessageFailed" value="False" />
  <add key="MaxOLRetry" value="1" />
</MDOTProvider>

<LogManager DailyFiles="false" SaveDays="60" ApplicationName="CommPoint2"
LogPath="c:\pcmaster\Log" ArchivePath="c:\pcmaster\Log" DebugMode="true"
DevelopmentMode="true" LogEnabled="true" UseTerminalIdInFileNames="false">
  <!-- Logs into common log file CommPoint2.log -->
  <logPublisher assembly="Retalix.DPOS.Logging"
type="Retalix.DPOS.Logging.FileLogPublisher" enabled="true"
logFormat="PlaneText" excludeSourceTypes="" includeSourceTypes=""
excludeExceptionTypes="" includeExceptionTypes="" minimalType="Info"
minimalLevel="Normal" destination="CommonFile" fileName="CommPoint2_RsmDisp"
EnableConsole="false" />
  <logPublisher assembly="Retalix.DPOS.Logging"
type="Retalix.DPOS.Logging.FileLogPublisher" enabled="true"
logFormat="PlaneText" excludeSourceTypes="" includeSourceTypes=""
excludeExceptionTypes="" includeExceptionTypes="" minimalType="Info"
minimalLevel="Normal" destination="CustomFile" fileName="" />
  <!-- This publisher will log exceptions only into ADSLinkSrvErrors.log
including all details-->
  <logPublisher assembly="Retalix.DPOS.Logging"
type="Retalix.DPOS.Logging.FileLogPublisher" enabled="true" logFormat="Text"
excludeSourceTypes="" includeSourceTypes="" excludeExceptionTypes=""
includeExceptionTypes="" minimalType="Exception" minimalLevel="Normal"
destination="All" fileName="CommPoint2Errors_RsmDisp" />
  <!-- This publisher logs the start/stop messages only into the Application
Event Log" -->
  <logPublisher assembly="Retalix.DPOS.Logging"
type="Retalix.DPOS.Logging.DefaultLogPublisher" enabled="true"
logFormat="Text" excludeSourceTypes="" includeSourceTypes=""
excludeExceptionTypes="" includeExceptionTypes="" minimalType="Exception"
minimalLevel="High" destination="EventLog" />
  <!-- This publisher logs exceptions only into the Application Event Log" -
->
  <logPublisher assembly="Retalix.DPOS.Logging"
type="Retalix.DPOS.Logging.DefaultLogPublisher" enabled="true"
logFormat="Text" excludeSourceTypes="" includeSourceTypes=""
excludeExceptionTypes="" includeExceptionTypes="" minimalType="Exception"
minimalLevel="Normal" destination="Default" logFilePath="" fileName="" />
</LogManager>
</configuration>

```



SLMSGUPLOADER.EXE.CONFIG FILE EXAMPLE:

```
<?xml version="1.0" encoding="utf-8"?>
<configuration>
  <configSections>
    <section name="CPWebService"
type="System.Configuration.DictionarySectionHandler,system,Version=1.0.3300.0,
Culture=neutral, PublicKeyToken=b77a5c561934e089, Custom=null" />
    <section name="LoopBack"
type="System.Configuration.DictionarySectionHandler,system,Version=1.0.3300.0,
Culture=neutral, PublicKeyToken=b77a5c561934e089, Custom=null" />
    <section name="LogManager"
type="Retalix.DPOS.Logging.LogManagerSectionHandler, Retalix.DPOS.Logging" />

    <section name="CPMDOT"
type="System.Configuration.DictionarySectionHandler,system,Version=1.0.3300.0,
Culture=neutral, PublicKeyToken=b77a5c561934e089, Custom=null" />
    <section name="MDOT"
type="System.Configuration.DictionarySectionHandler,system,Version=1.0.3300.0,
Culture=neutral, PublicKeyToken=b77a5c561934e089, Custom=null" />
    <section name="MDOTProvider"
type="System.Configuration.DictionarySectionHandler,system,Version=1.0.3300.0,
Culture=neutral, PublicKeyToken=b77a5c561934e089, Custom=null" />

  </configSections>

  <CPWebService>
    <add key = "AssemblyName" value =
"CommPoint2.ClientProvider.WebService.CpClientWebServiceProvider" />
    <add key = "TypeName" value =
"CommPoint2.ClientProvider.WebService.CpClientWebServiceProvider" />
  </CPWebService>

  <LoopBack>
    <add key="OLProvider" value="CPWebService" />
    <add key="OLExternalTargetApplicationName" value="LoopBack" />
    <add key="OLHost" value="MDOTProvider" />
    <add key="OLMessageTimeout" value="15000" />
    <add key="UseResponseQueue" value="True" />
    <add key="MessageBuffer" value="C:\PCMASTER\MDOT\req.txt" />
  </LoopBack>

  <CPMDOT>
    <add key="AssemblyName"
value="CommPoint2.ClientProvider.MDOT.CpClientMDOTProvider" />
    <add key="TypeName"
value="CommPoint2.ClientProvider.MDOT.CpClientMDOTProvider" />
  </CPMDOT>
  <MDOT>
    <add key="OLProvider" value="CPMDOT" />
    <add key="OLExternalTargetApplicationName" value="MDOT" />
    <add key="OLHost" value="MDOTProvider" />
    <add key="OLMessageTimeout" value="15000" />
    <add key="UseResponseQueue" value="True" />
    <!--add key="MessageBuffer" value="C:\PCMASTER\MDOT\req.txt" /-->
  </MDOT>
  <MDOTProvider>
    <add key="Chain" value="1" />
    <add key="Branch" value="1001" />
    <add key="MDOTUrl" value="http://174.129.204.23/mdot/redeem" />
  </MDOTProvider>
</configuration>
```

```

<add key="MDOTProxy" value="" />
<add key="MDOTProxyUserName" value="" />
<add key="MDOTProxyPassword" value="" />
<add key="MDOTProxyDomain" value="" />
<add key="MDOTLoginTimeout" value="10000" />
<add key="MDOTWatchdogTimeout" value="20000" />
<add key="MDOTOfflineWatchdogFrequency" value="60000" />
<add key="MDOTWatchDogFrequency" value="60000" />
<add key="MDOTDisableFlag" value="C:\PCMASTER\Flag\WSStop.flg" />
<add key="MDOTRetryOnTimeoutException" value="True" />
<add key="MDOTEnableWatchDog" value="False" />
<add key="MDOTEnableOfflineWhenMessageFailed" value="False" />
<add key="MaxOLRetry" value="1" />
<!--add key="MSG2Demo" value="C:\PCMASTER\MDOT\resp.txt" /-->
</MDOTProvider>

<LogManager DailyFiles="false" SaveDays="60"
ApplicationName="CommPoint2" LogPath="c:\pcmaster\Log"
ArchivePath="c:\pcmaster\Log" DebugMode="true" DevelopmentMode="true"
LogEnabled="true" UseTerminalIdInFileNames="false">
  <!-- Logs into common log file CommPoint2.log -->
  <logPublisher assembly="Retalix.DPOS.Logging"
type="Retalix.DPOS.Logging.FileLogPublisher" enabled="true"
logFormat="PlaneText" excludeSourceTypes="" includeSourceTypes="*"
excludeExceptionTypes="" includeExceptionTypes="*" minimalType="Info"
minimalLevel="Normal" destination="CommonFile"
fileName="CommPoint2_ClientDispatch" EnableConsole="false" />
  <logPublisher assembly="Retalix.DPOS.Logging"
type="Retalix.DPOS.Logging.FileLogPublisher" enabled="false"
logFormat="PlaneText" excludeSourceTypes="" includeSourceTypes="*"
excludeExceptionTypes="" includeExceptionTypes="*" minimalType="Info"
minimalLevel="Normal" destination="CustomFile" fileName="" />
  <!-- This publisher will log exceptions only into
ADSLinkSrvErrors.log including all details-->
  <logPublisher assembly="Retalix.DPOS.Logging"
type="Retalix.DPOS.Logging.FileLogPublisher" enabled="true" logFormat="Text"
excludeSourceTypes="" includeSourceTypes="*" excludeExceptionTypes=""
includeExceptionTypes="*" minimalType="Exception" minimalLevel="Normal"
destination="All" fileName="CommPoint2_ClientDispatchErrors" />
  <!-- This publisher logs the start/stop messages only into the
Application Event Log" -->
  <logPublisher assembly="Retalix.DPOS.Logging"
type="Retalix.DPOS.Logging.DefaultLogPublisher" enabled="false"
logFormat="Text" excludeSourceTypes="" includeSourceTypes="*"
excludeExceptionTypes="" includeExceptionTypes="*" minimalType="Exception"
minimalLevel="High" destination="EventLog" />
  <!-- This publisher logs exceptions only into the Application
Event Log" -->
  <logPublisher assembly="Retalix.DPOS.Logging"
type="Retalix.DPOS.Logging.DefaultLogPublisher" enabled="false"
logFormat="Text" excludeSourceTypes="" includeSourceTypes="*"
excludeExceptionTypes="" includeExceptionTypes="*" minimalType="Exception"
minimalLevel="Normal" destination="Default" logFilePath="" fileName="" />
</LogManager>
</configuration>

```

