

Technical Bulletin

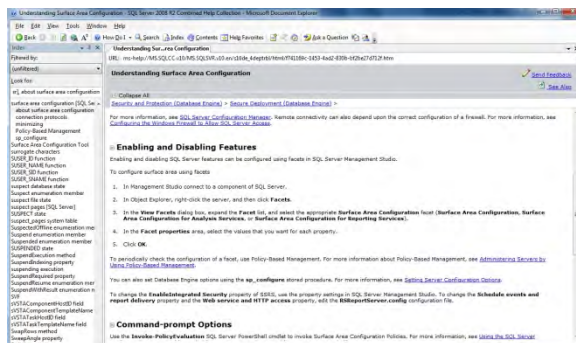
ISS45 SQL 2008 Setup — Additional Requirements

ISS45-TECH-12:11
August 8, 2012

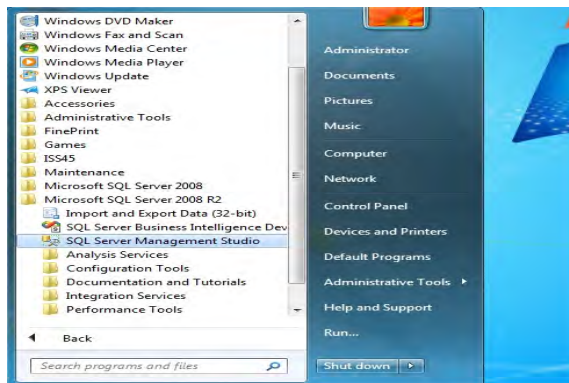
The following additional setup is required when running SQL 2008 with ISS45 8.1.5.2 or higher. Failure to make this change can result in batches not applying properly.

PROCESS

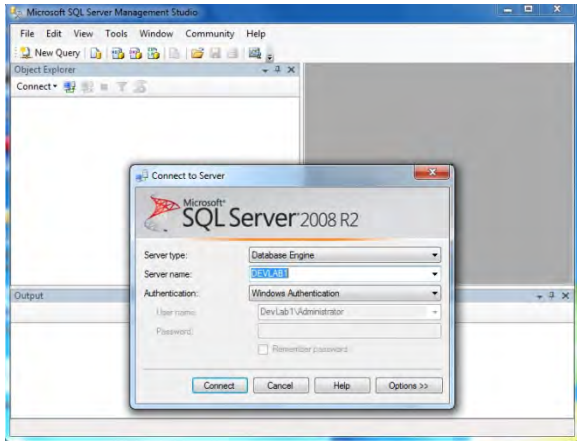
Instructions for Enabling and Disabling Features



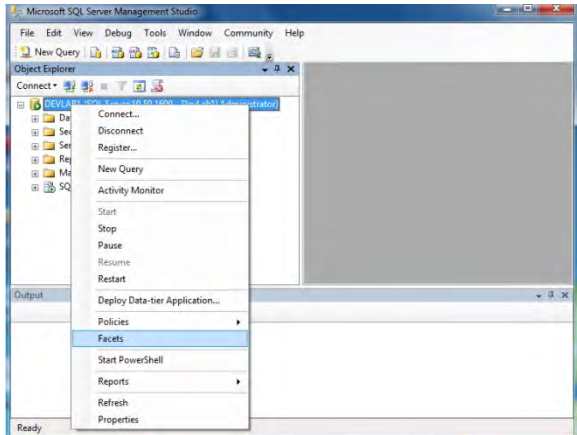
Click on SQL Server Management Studio



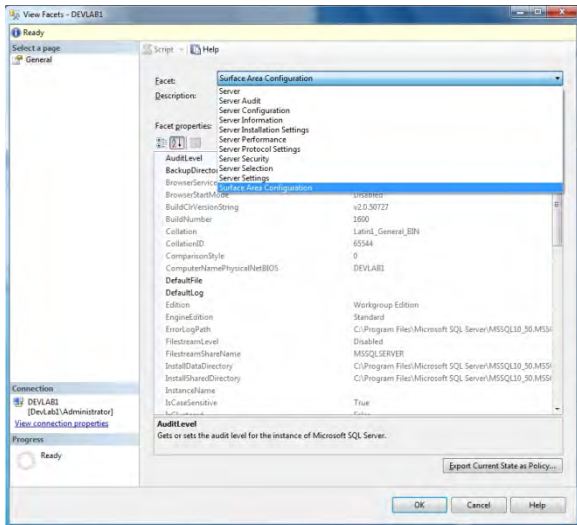
Click Connect:



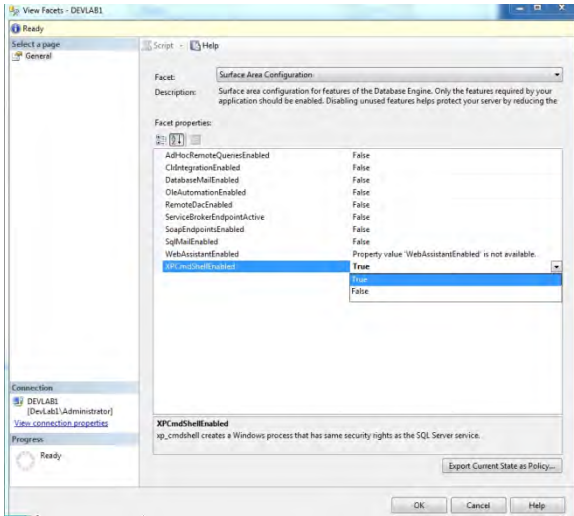
Click Facets:



Select Surface Area Configuration:



Set “XPcmdShellEnabled” = True:



Click OK.

Done!

