

Technical Bulletin

ISS45 V7 and V8 Dual Cash Drawer Setup

ISS45-TECH-05:01

February 3, 2005

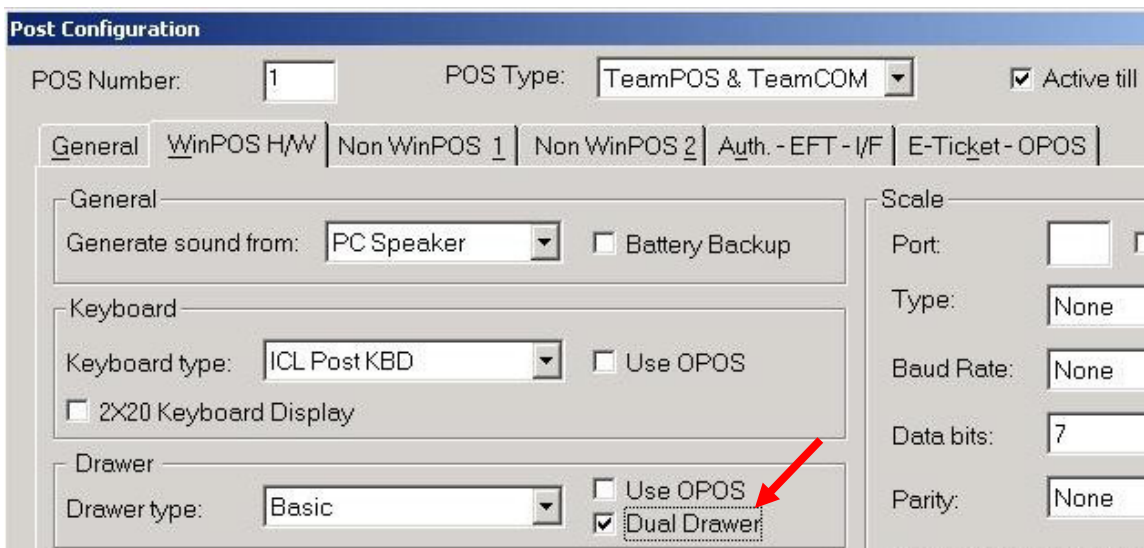
Both ISS45 V7 WinPoS and V8 WinPoS support dual cash drawers on the POST. The setup only requires checking off one system parameter.

SETUP:

For V7, go to screen 6-1-4-1 and select the POST (terminal) for which you need to set up dual cash drawer capability. On the left side of the screen put a check mark next to "Dual drawer enabled" as in the example below:



For V8, go to System Administration\POS Setup\POS Configuration\POS Configuration and select the POST (terminal) for which you need to set up for dual cash drawer capability. On the left side of the screen put a check mark next to "Dual Drawer" as in the example below:



This document and information are supplied to StoreNext Retail Technologies personnel and third parties to assist them in doing business with StoreNext. They are not to be used or distributed for any other purpose.

StoreNext Retail Technologies LLC endeavors to ensure that the information in this document is correct and fairly stated, but does not accept liability for any error or omission.

OPERATION

The first cashier to sign on to a dual-drawer POST will be assigned drawer #1 automatically and the second cashier to sign on to the same POST will be assigned drawer #2. Regardless of the number of drawers, only one cashier can be signed onto a POST at any one time.

When a cashier signs off a dual-drawer POST they will receive a message:



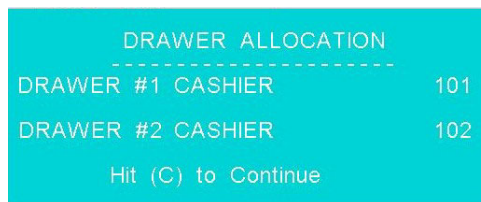
- A cashier selecting 'Yes' will be signed off, the proper cash drawer will open and that cash drawer will become free for any other cashier to use.
- If the cashier selects 'No' then the cash drawer will open but will not be freed up for any other cashier to use.

If both cash drawers are assigned to cashiers and a third cashier attempts to sign on, that third cashier will receive a message indicating that neither drawer has been released and the notification of which cashiers are currently allocated to which drawers:



EXAMPLES:

1. Cashier 101 is the first cashier to sign on to POST #7 and is automatically assigned cash drawer #1.
2. Cashier 101 signs off POST #7 and selects 'No' when asked "Release Drawer At Sign Off".
3. Cashier 102 signs on to POST #7 and is automatically assigned to cash drawer #2.
4. Cashier 102 signs off POST #7 and selects 'No' when asked "Release Drawer At Sign Off".
5. Cashier 103 attempts to sign on to POST #7 and receives the message:



6. Cashier 101 once again signs on to POST #7.
7. Cashier 101 signs off POST #7 and selects 'Yes' when asked "Release Drawer At Sign Off".

8. Cashier 103 signs on to POST #7 and is automatically assigned to cash drawer #1 (which was the drawer released by cashier 101).
9. Cashier 103 signs off POST #7 and selects 'No' when asked "Release Drawer At Sign Off".
10. Cashier 102 once again signs on to POST #7.
11. Cashier 102 signs off POST #7 and selects 'Yes' when asked "Release Drawer At Sign Off" (cash drawer 2 is now free for any cashier to use).
12. Cashier 103 signs on to POST #7 again.
13. Cashier 103 signs off POST #7 and selects 'Yes' when asked "Release Drawer At Sign Off".
 - Cash drawer 1 is now free for any cashier to use;
 - That is, both cash drawers on POST #7 are free at this time and the first cashier to sign on to this POST will automatically be assigned to cash drawer 1.

To Your Success,

Speros
Speros Voss
ISS45 Technical Support