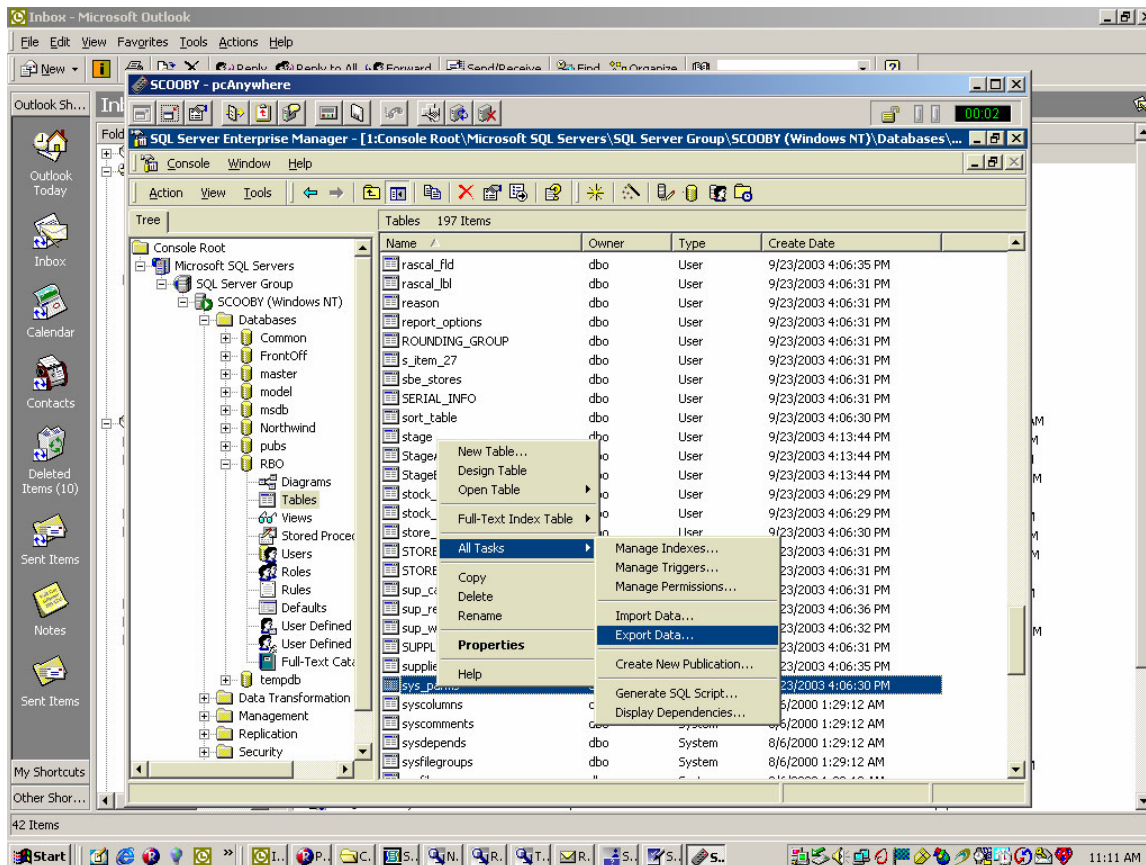


# Technical Bulletin

## RBO: Exporting Data from the RBO Database

RBO-TECH-05:05  
February 4, 2005

### EXPORTING RBO DATA FROM SQL 2000:

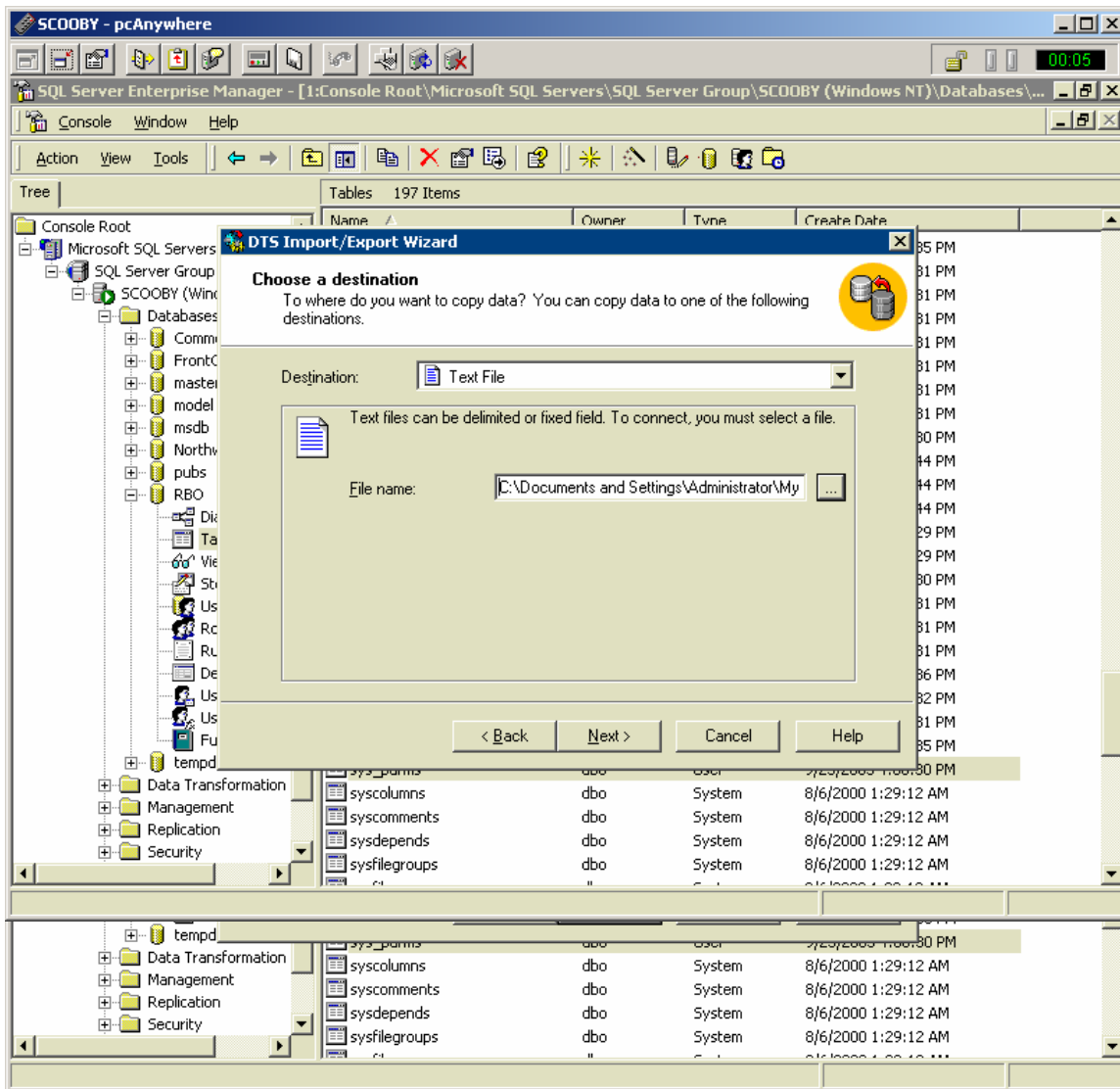


Click Next

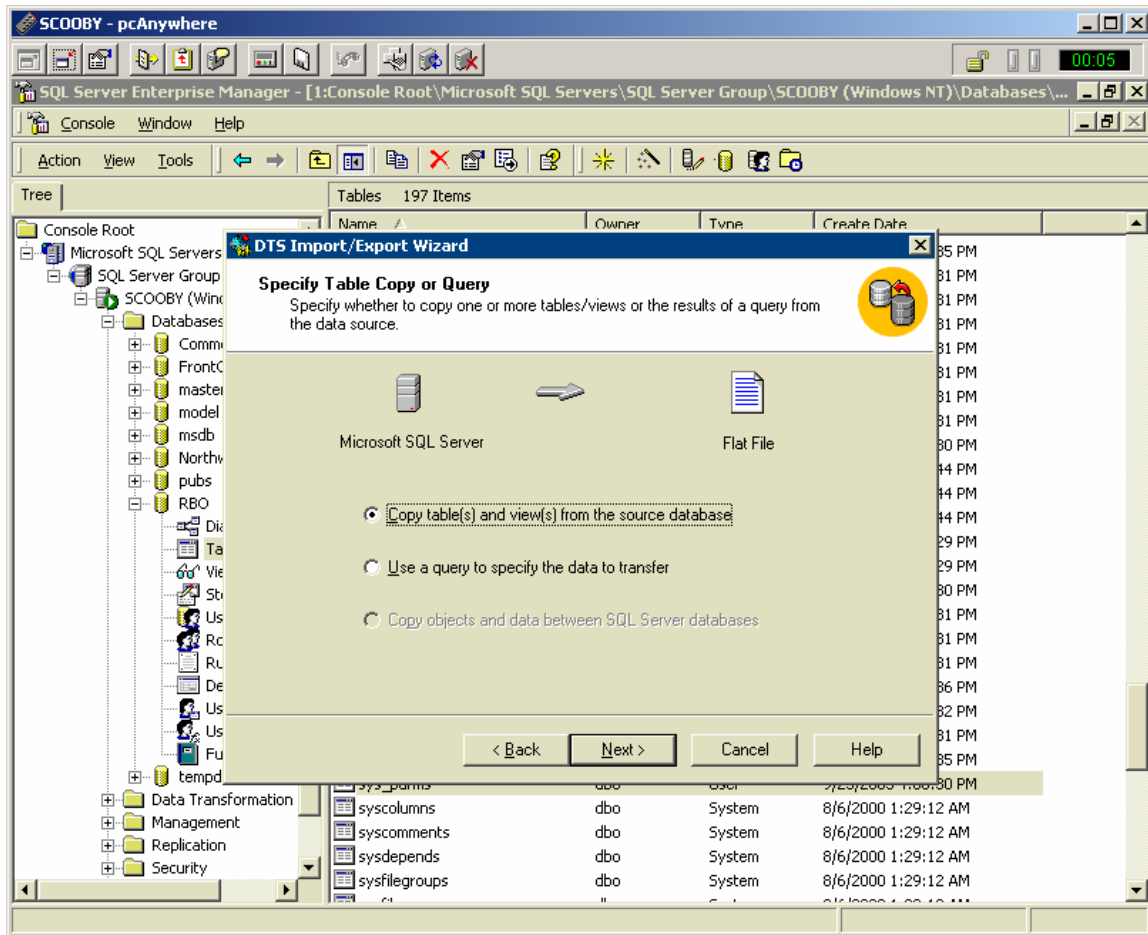
This document and information are supplied to StoreNext Retail Technologies personnel and third parties to assist them in doing business with StoreNext. They are not to be used or distributed for any other purpose.

StoreNext Retail Technologies LLC endeavors to ensure that the information in this document is correct and fairly stated, but does not accept liability for any error or omission.

Click Next

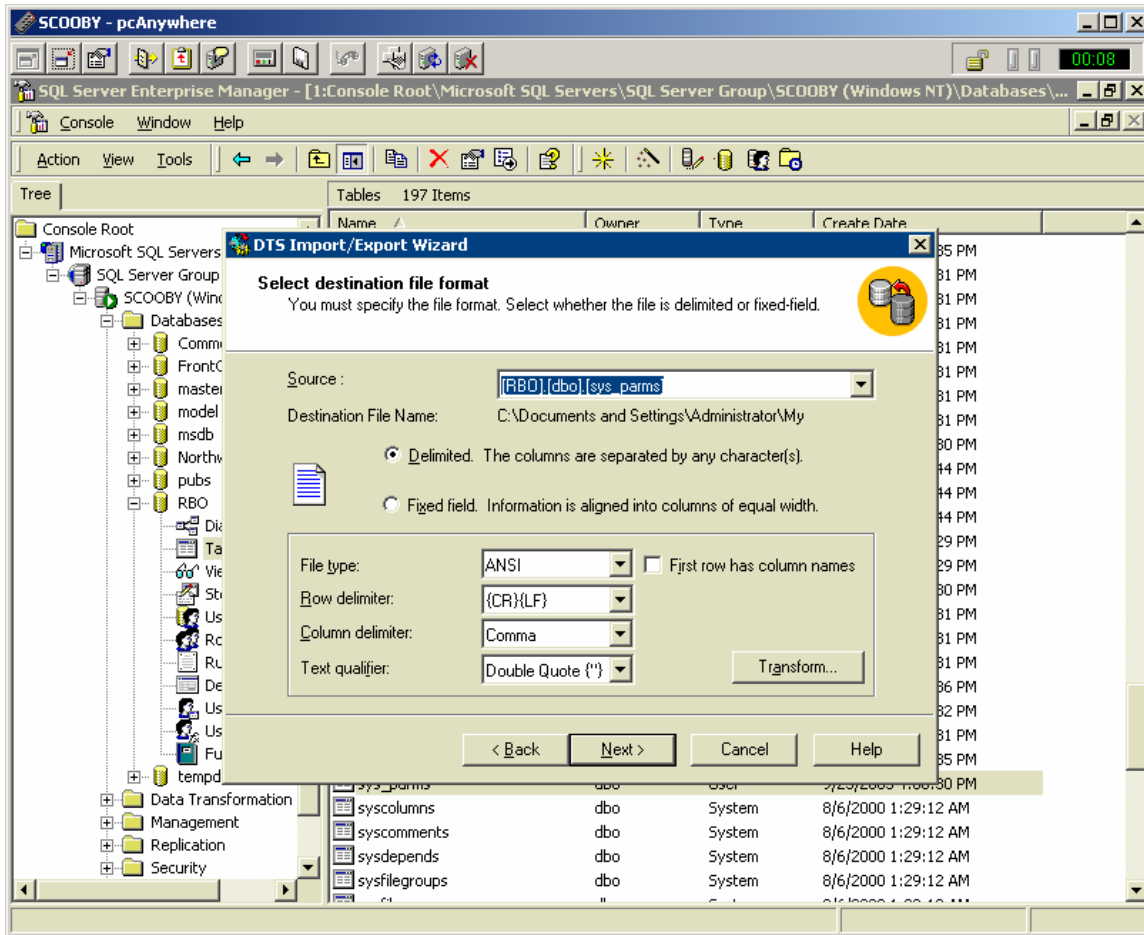


click Next

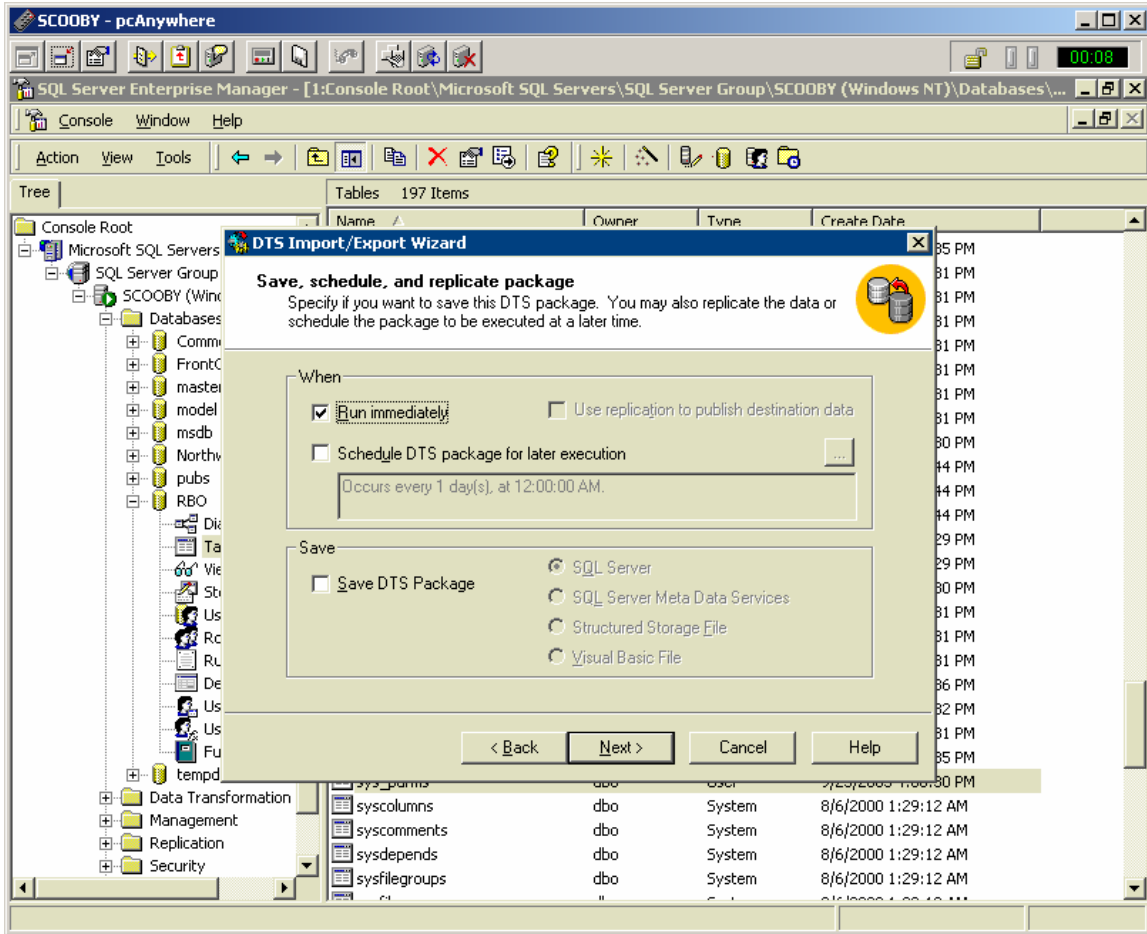


Click Next

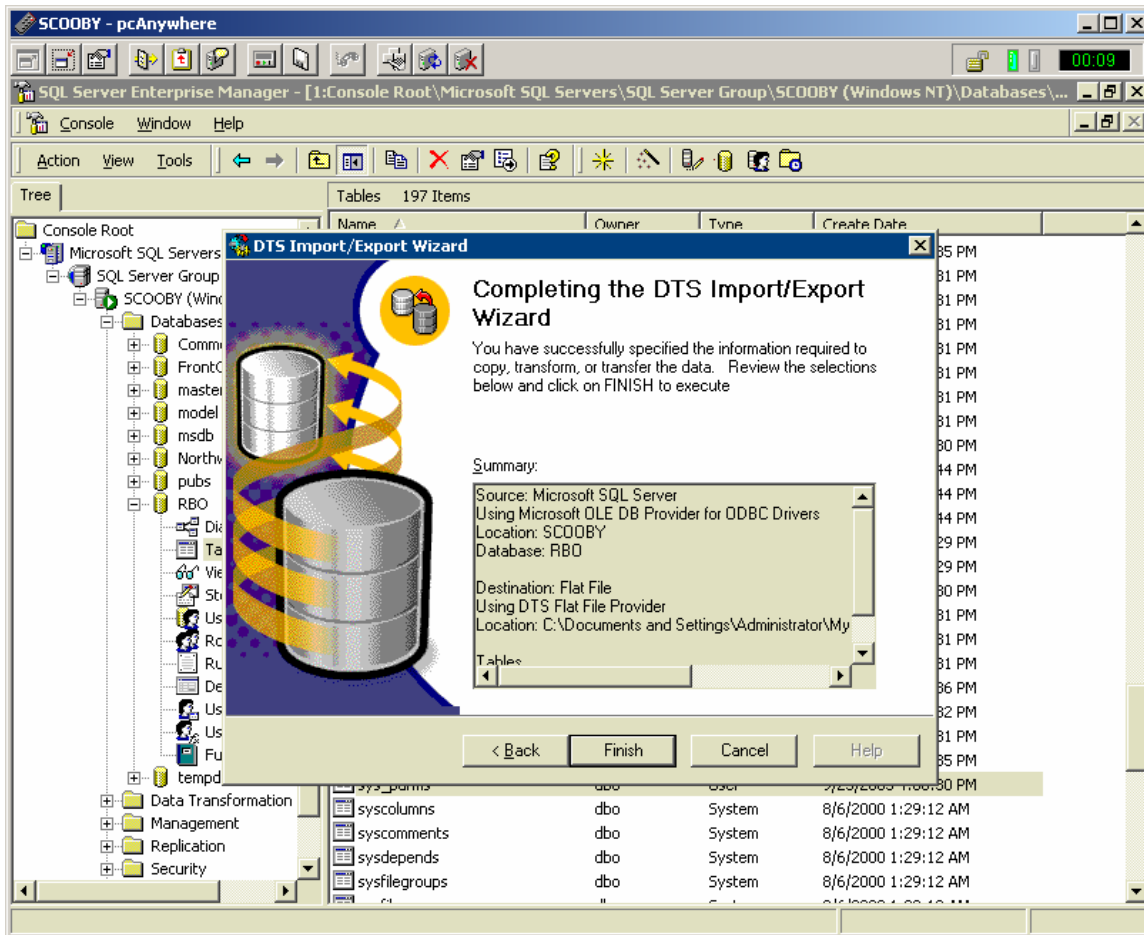
Select Correct "Source" Table and take all other defaults



Click Next



Click Next



Verify Summary and click Next

To Your Success,

**Tim**  
 Tim Shafer  
 RBO Technical Specialist