

Technical Bulletin

RBO: Migration from RBX to RBO using CIX

RBO-TECH-05:07

February 4, 2005

MIGRATION OF RBX TO RBO USING CIX

CIX Considerations:

- ***CIX store setup for new POS platform***
 - ***New POS platform may not support currently supported fields from CIX***
- ***CIX does not support RBO Temporary Batches***
- ***Migration from FX file format to SIL formatted maintenance***
 - ***SIL output from CIX to RBO***
 - ***Using SIL Re-formatter***
 - ***The user needs to consider the level of customization existing within CIX for store hosting, field mapping***
 - ***The base SIL re-formatters may need customization based upon current CIX custom field mapping***
 - ***Supports 13 digit UPC***
 - ***Using native SIL***
 - ***Requires at least CIX release 3.0 (Update fees apply)***
 - ***SIL compliant for releases 6.0 and greater, 14 digit GPC***
 - ***Full SIL field level support***
 - ***The user needs to consider the level of customization existing within CIX for store hosting, field mapping***

Note: Customers requesting specific results within RBO from CIX will require discussions with the customer, CIX, and Back Office Support to accomplish desired results. Before you go live with RBO, it is very important to schedule adequate time to test RBO hooked up to your POS while communicating with CIX.

RBO Considerations:

- **Parameters**
 - **Host Tab**

SCOOPY - pcAnywhere

Parameter Maintenance - [Maintain Parameter Settings]

File Edit Reports Window Help

Check Hold Price Flag: Treat Cost Change as Add Replace:

Drop U.P.C./PLU Check Digit: Default Batch Apply Time: 12:00 AM

SIL Default Data Dictionary: 07.00 Automatically Schedule SIL Batches:

Trim Order Code Flag: Set Receiving Package as Primary:

Trimmed Order Code Length: 6 SIL Batch Export Data Dictionary: 7.00

SIL RSS Item Number Check: SIL Batch Export Add UPC/PLU Check Digit:

SIL Treat Item Change as Add/Replace: SIL Batch Export Overwrite Existing Files:

SIL Batch Export Add/Change as Add/Replace:

Store Params	Labels	Host	Host Extract	Item Management	Inventory
Mvmt History					
Maintenance	Receiving	Invoice Extract	Ordering	FM Params	POS

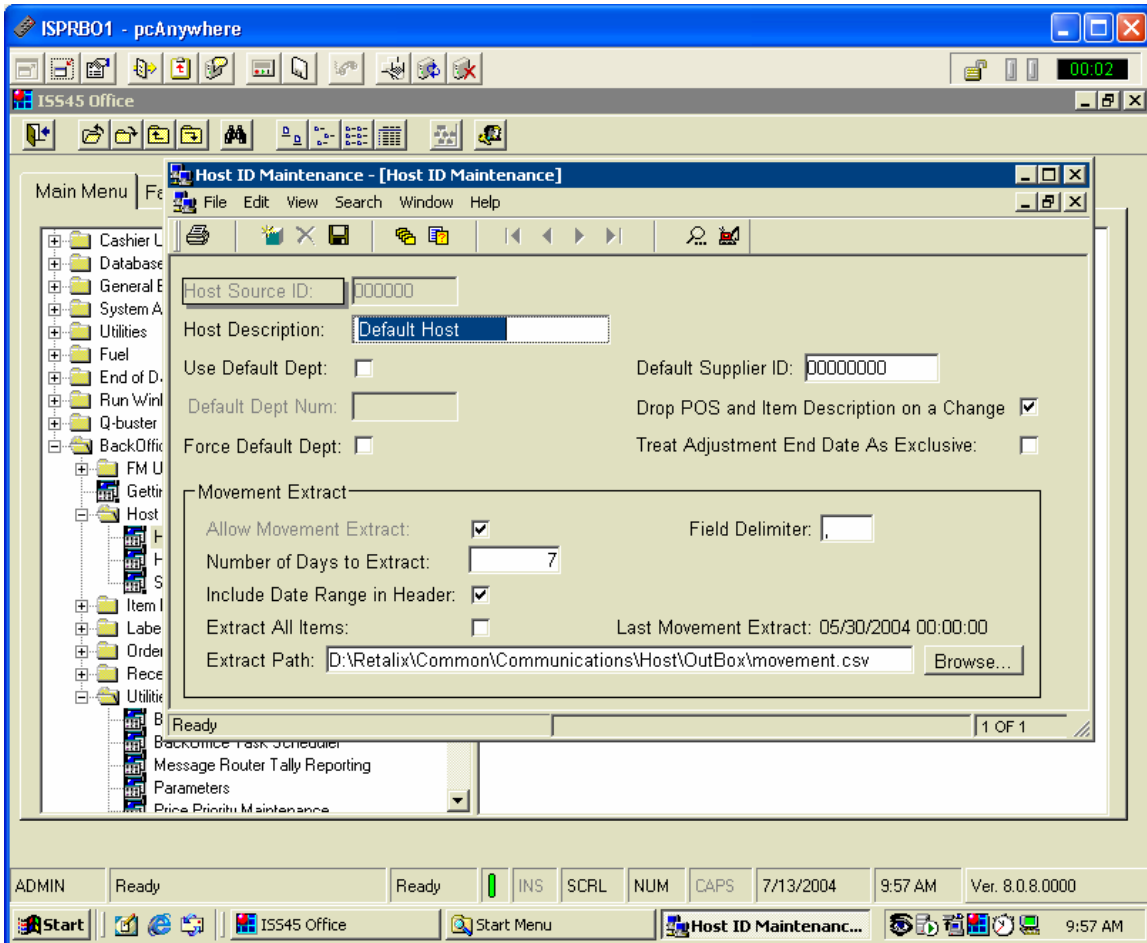
Host Parameter Maintenance 7/13/2004 9:27 AM

- ***If using Native SIL, check DROP U.P.C./PLU Check Digit***
- ***Desired release of SIL to support, SIL Default Data Dictionary***
- ***Desired length of Order Codes, prevents creation of multiple order codes***
 - ***Trim Order Code Length***
 - ***Trimmed Order Code Length***
- ***SIL Treat Item Change as Add/Replace, if the item is not on file, all necessary fields to add the item into the system must be present on the SIL record or the record will be dropped***
- ***Treat Cost Change as Add Replace, if the necessary fields related to costs do not match existing receiving package, a new receiving package will be created***
- ***Set Receiving Package as Primary, when a new receiving package is received, it will be set as the primary receiving package for the item when received in the future***

- **Host ID Maintenance**

- **Multiple Host ID's must be defined if multiple movement extracts are being created with varying number of days to extract**

Example: Movement is extracted every day and also every seven days. Each Host ID maintains the date of the last extract to determine what dates the extract of movement should pull the next time it is run.



To Your Success,

Tim
Tim Shafe
RBO Technical Specialist