

Technical Bulletin

NCR 5932 Keyboard – Configuring with ISS45

February 7, 2015
POS-TECH-15:01

OVERVIEW

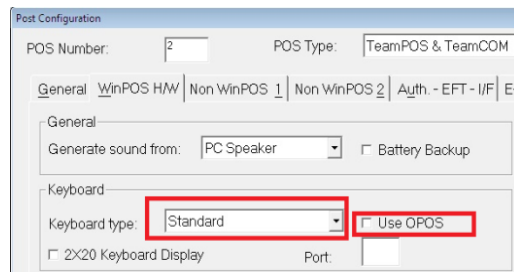
The NCR Model 5932 64-key¹ keyboard has been certified with ISS45. The keyboard operates according to this Technical Bulletin with ISS45 releases 8.1.7.0-050 and later.

The NCR 5932 keyboard was certified with the NCR Model 7600 (RealPOS 40) via the terminal's PS/2 port.

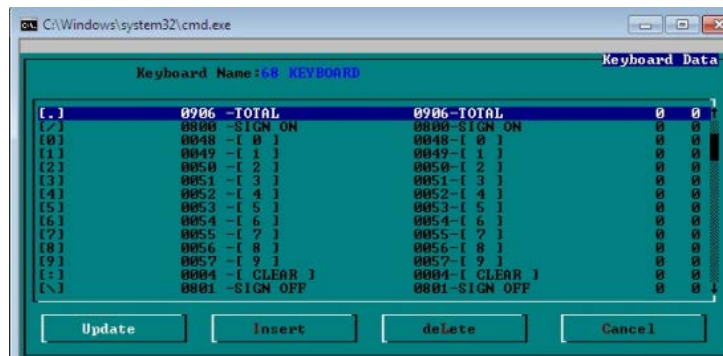
To ensure proper operation, follow the setup below.

SETUP

1. On MFS1, under POST Configuration, WinPOS H/W tab:
 - a. Set the Keyboard type = Standard,
 - b. Use OPOS must be UNCHECKED.



2. Under Keyboard Programming, map the keys below to the appropriate function that each key should call:



¹ This keyboard (NCR-5932-2226-9090) is known as a "64-key" keyboard although it actually provides 68 key-stems.



14014

Note: Numeric keypad shown in “calculator” layout.

Keycode Charts

The following tables correlate the keyboard key number, unshifted character and scan code for the keyboards.

Note: The keys F11 through F20 correspond with Shift F1 through Shift F10. Keys F21 through F23 correspond with Ctrl F1 through Ctrl F3.

Note: Key-stems 63/64 and 57/66 are capped together by default.

68-key Keyboard Keycode Table

68-key Keyboard				68-key Keyboard				68-key Keyboard			
Key Number	Unshifted Character	Make Code	Translated to Scan Code Set 1 (hex)	Key Number	Unshifted Character	Make Code	Translated to Scan Code Set 1 (hex)	Key Number	Unshifted Character	Make Code	Translated to Scan Code Set 1 (hex)
1	/	4A	35	24	u	3C	16	47	6	74	4D
2	a	1C	1E	25	_	12 4E F0 12	0C	48	+	79	4E
3	b	32	30	26	F1	05	3D	49	F16	12 0B F0 12	59
4	c	21	2E	27	F2	06	3C	50	x	22	2D
5	d	23	20	28	F11	12 05 F0 12	54	51	Backspace	66	0E
6	e	24	12	29	*	7C	37	52	F7	83	41
7	f	2B	21	30	--	7B	4A	53	F8	0A	42
8	g	34	22	31	F14	12 0C F0 12	57	54	1	69	4F
9	\	5D	2B	32	v	2A	2F	55	2	72	50
10	h	33	23	33	“	12 52 F0 12	28	56	3	7A	51
11	i	43	17	34	F3	04	3D	57	F13	12 04 F0 12	56
12	j	3B	24	35	F4	0C	3E	58	F17	12 02 F0 12	5A
13	k	42	25	36	7	6C	47	59	y	35	15
14	l	4B	26	37	8	75	48	60	Space	29	39
15	m	3A	32	38	9	7D	49	61	F9	01	43
16	n	31	31	39	F22	12 06 F0 12	55	62	F10	09	44
17	, (comma)	41	33	40	F15	12 03 F0 12	58	63	0	70	52
18	o	44	18	41	w	1D	11	64	F19	12 01 F0 12	5C
19	p	4D	19	42	:	12 4C F0 12	27	65	. (period)	71	53
20	q	15	10	43	F5	03	3F	66	CR	5A	1C
21	r	2D	13	44	F6	0B	40	67	F18	12 0A F0 12	5B
22	s	1B	1F	45	4	6B	4B	68	Z	1A	2C
23	t	2C	14	46	5	73	4C				

Note: The “Make Code” and “Translated to Scan Code” columns in the table above are not relevant to this application. Simply refer to the keyboard layout for the key position/number, and use the characters in the “Unshifted Character” column in Keyboard Programming to set the function to be called by that key.

Examples:

- Key position 2 will send an “a” – so set “a” to the desired function in Keyboard Programming.
- If setting key 57 (which is F13), this is really Shift/F3.
- If setting key 39 (which is F22), this is really Ctrl/F2.

3. On the POST, in RSM Select "POS Keyboard" and set the Profile for:
 - a. NCRPOSKeyboard.1
 - b. Intercept Mode=Global
 - c. Intercept Level=All.
4. Make sure WINPOS.INI has:
 - a. DISPLAY=FullScreen
 - b. This is because this should *not* be run under Full Touch Mode (WideMenuPanel).

The Model 5932 keyboard will now work with ISS45.

SCOPE AND LIMITATIONS

The specific model certified is the NCR-5932-2226-9090. This model includes wedge support for a speaker, keylock, RS-232 scanner port, and a 1.5-meter PS/2 cable. This version does not include the optional MSR.

The following Model 5932 keyboard items are out of scope and are not certified.²

- a. Magnetic stripe reader (MSR)
- b. Scanner port
- c. Key lock

² These items were not included in the testing and may or may not operate as expected. Channel Partners may configure and test these options as desired, but support from NCR is not available.