

Technical Bulletin

ISS45 V8 LFS Communication to MFS

ISS45-TECH-13:13
July 11, 2013

ISSUE

If an ISS45 V8 LFS3 is installed, it will communicate with MFS1, but other LFS numbers may not communicate properly with MFS1. This may affect multiple V8 releases, and is known to occur when the MFS1 is installed over Windows 7 with SQL 2008 and the LFS is using Windows XP SP3.

POS_Srv_Manager will indicate that the services are started but the services monitor (the “Eye” icon in the tray) traffic light will not go from yellow to green.

SOLUTION

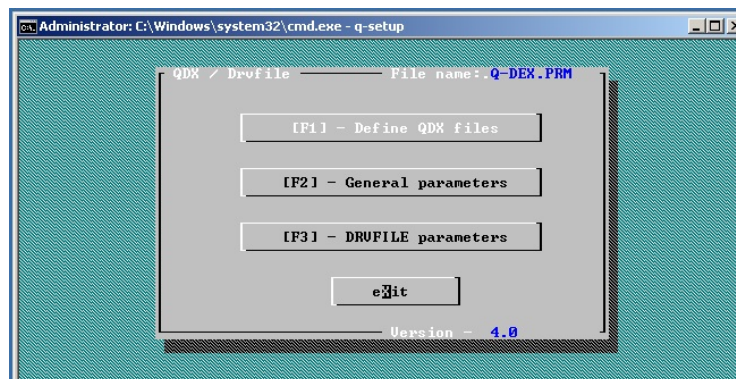
This fault will be addressed in a future ISS45 V8 release.

The current work-around is to install all LFS PCs as LFS3. Then run Q-Setup on the LFS and change the workstation number from 3 to another valid LFS number.

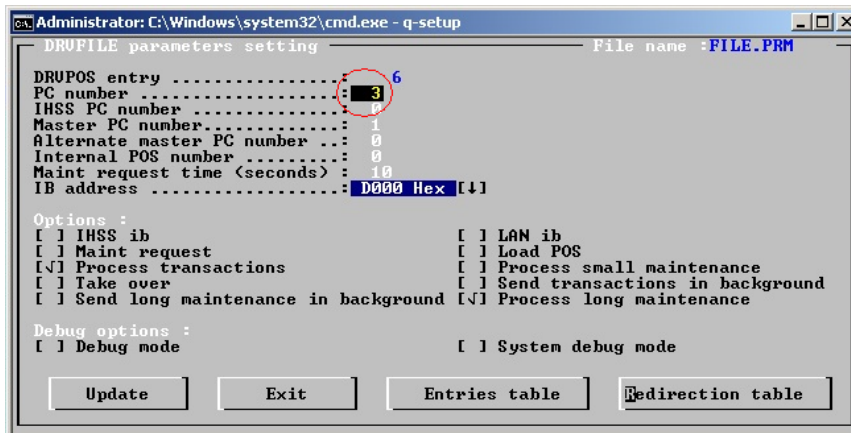
Note: these instructions assume the MFS1 and LFS PC are properly configured, and if loaded correctly the LFS3 will communicate with MFS1. If the LFS PC has not been loaded as an LFS3, verify that it will communicate with MFS1 to rule out Windows, firewall, HASP issues etc.

STEPS

1. Install the LFS as LFS3.
2. Verify that LFS3 communicates with MFS1.
3. From a command line on LFS, change to the PCMASTER directory (**CD\PCMASTER**).
4. Type **q-setup**.



5. Select F3 for DRVFILE parameters.



6. Change the PC number from 3 to another valid LFS number.
7. Remember to change the IP, computer name, and host files to match the new LFS number.
8. Make sure your HASP key is correctly programmed to support the additional Workstations.
9. Make sure PCs in System (under System Administration\Front Office Parameters) is set for this LFS.
10. Reboot the LFS and it will now communicate to MFS1 as LFSx.

