

## Technical Bulletin

### HP L6015TM Touch-Screen Monitor Installation

POS-TECH-13:05  
March 29, 2013

The touch-screen driver for the HP L6015TM does not support audio feedback for touch presses. To have the monitor “beep” upon key depress, audio cabling from the POS terminal is required. This situation applies to both ScanMaster and ISS45.

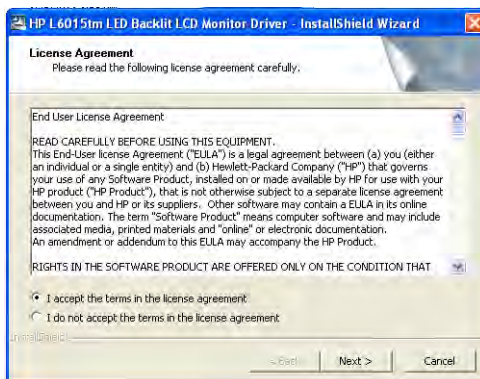
In the case of ScanMaster, /TOUCHSND must also be added to the regstart.dat. A future patch will set this in the MakeHP program.

### INSTALLATION OVERVIEW

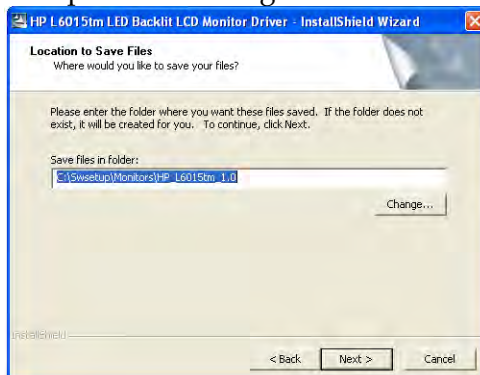
Although touch will work without updating the driver, it is recommended to install the latest driver and latest firmware updates.

To install the touch driver:

- 1) Download sp57960.exe from the Retalix Website.
- 2) Double click on sp57960.exe and Click RUN.



- 3) Accept the license agreement and click Next.

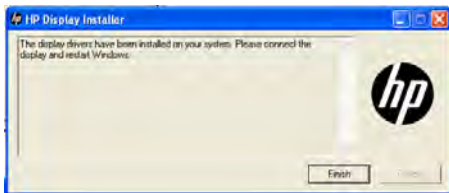


- 4) Click Next to accept the default location.



- 5) Click Next to install the display driver.

Note: If you attached the USB cable prior to this message the detected display will show as HP L6015tm Touch Monitor instead of Plug and Play Monitor.

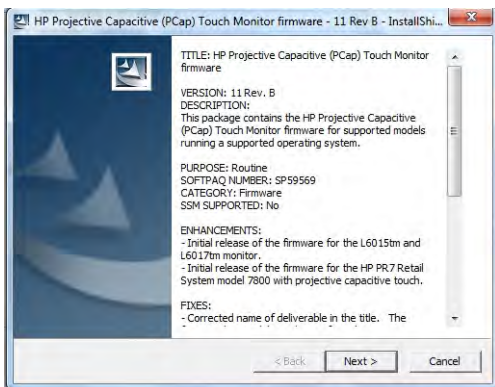


- 6) Click Finish and follow the directions displayed.

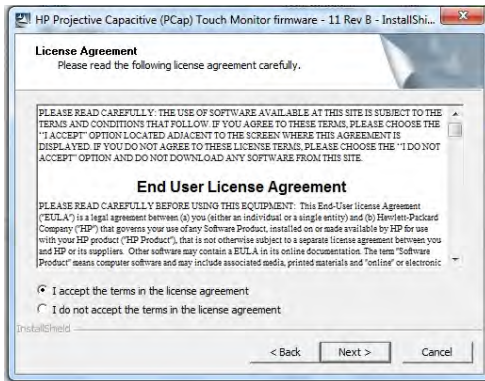
Note: If you attached the USB cable prior the message above will not tell you to connect display and restart windows.

### Upgrading the Monitor Firmware

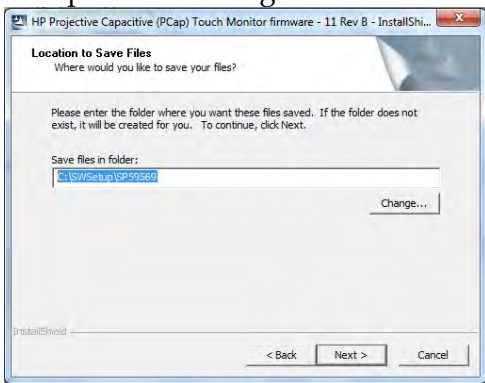
- 1) Download sp59569.exe from the Retalix Website.
- 2) Double click on sp59569.exe and click RUN.



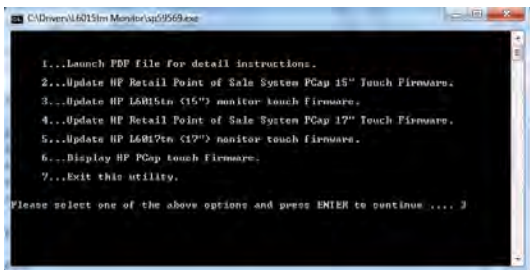
3) Click Next.



4) Accept the license agreement and click Next.



5) Click Next to accept default location.



6) Select '3' and press ENTER.



