

Technical Bulletin

ISS45 V7 OPOS Setup with TPG/Axiohm A758 Printer

ISS45-TECH-08:06 Issue 2
June 11, 2008

This bulletin provides setup information for using the A758 printer with ISS45 V7, implementing the OPOS drivers for that printer for use with ECC.

The instructions include:

1. RCS OPOS Common Control Objects Installation
2. Installation of FTXSOPOS_1_10_2 for TP2000 MSR, Keylock and Keyboard

Note: the FTXSOPOS software is *not* required for the A758 printer to work with the TPG OPOS drivers. It is only being loaded as a test utility.

3. TPG OPOS Installation
4. TPG A758 Printer Configuration

NOTE: This installation is for the TP2000 A-board, M-board and S-board. The TP3000 terminal has NOT been tested with the TPG/Axiohm A758 printer.

This document and information are supplied to StoreNext Retail Technologies personnel and third parties to assist them in doing business with StoreNext. They are not to be used or distributed for any other purpose.

StoreNext Retail Technologies LLC endeavors to ensure that the information in this document is correct and fairly stated, but does not accept liability for any error or omission.

NOTE: OPOS is only required for ECC, or if using a USB connection for the printer.

NOTE: This procedure was only tested with an Axiohm 758 RS232 printer using Boot

Firmware V3.10 and Flash Firmware V4.20

1. RCS OPOS Common Control Objects Installation

1.1. Installation of RCS OPOS Common Control Objects

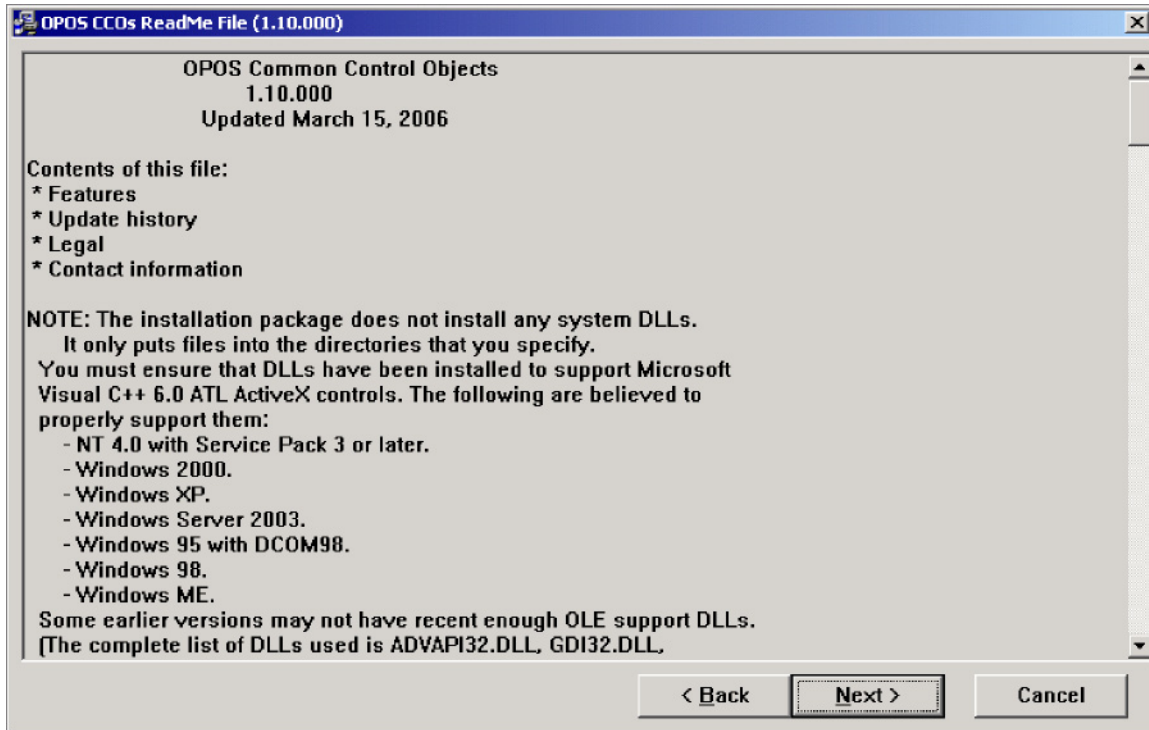
1.1.1. The file can be found on the V7.1.2.1-050 distribution CD in the OPOS\RCS folder

1.1.2. Run OposCCOs-1_10_000.EXE from the Start>Run Open: command line. The Welcome screen appears

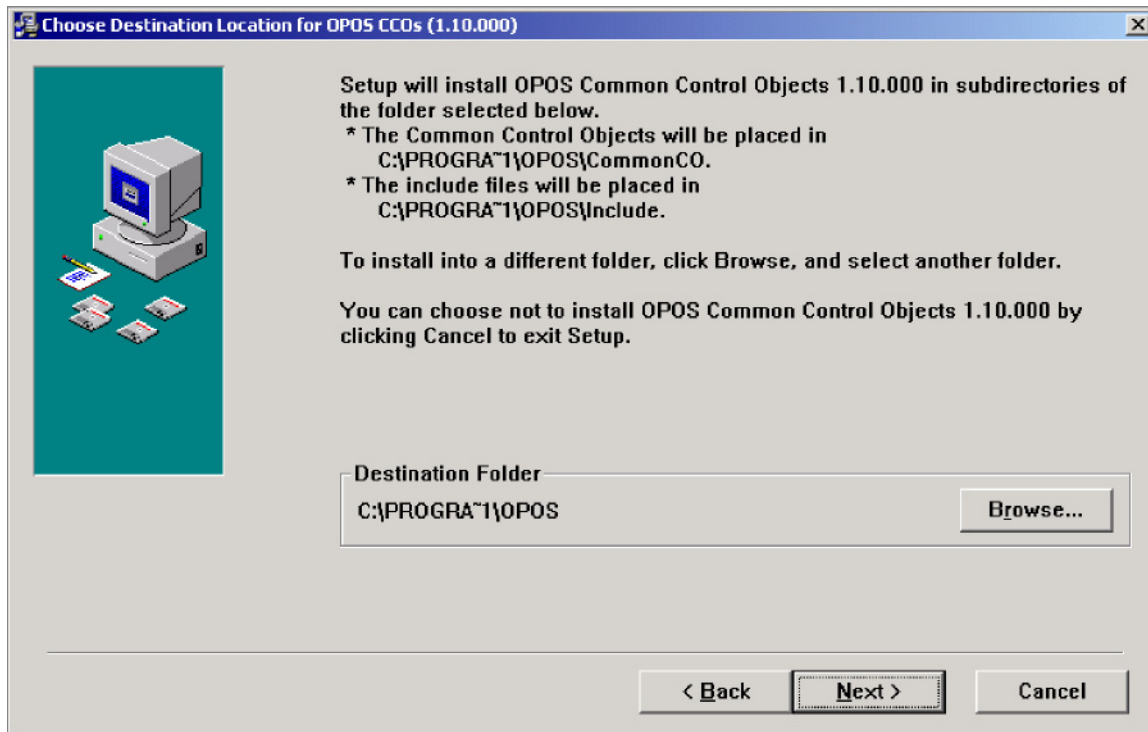


1.1.3. Click Next and the Read Me File screen appears



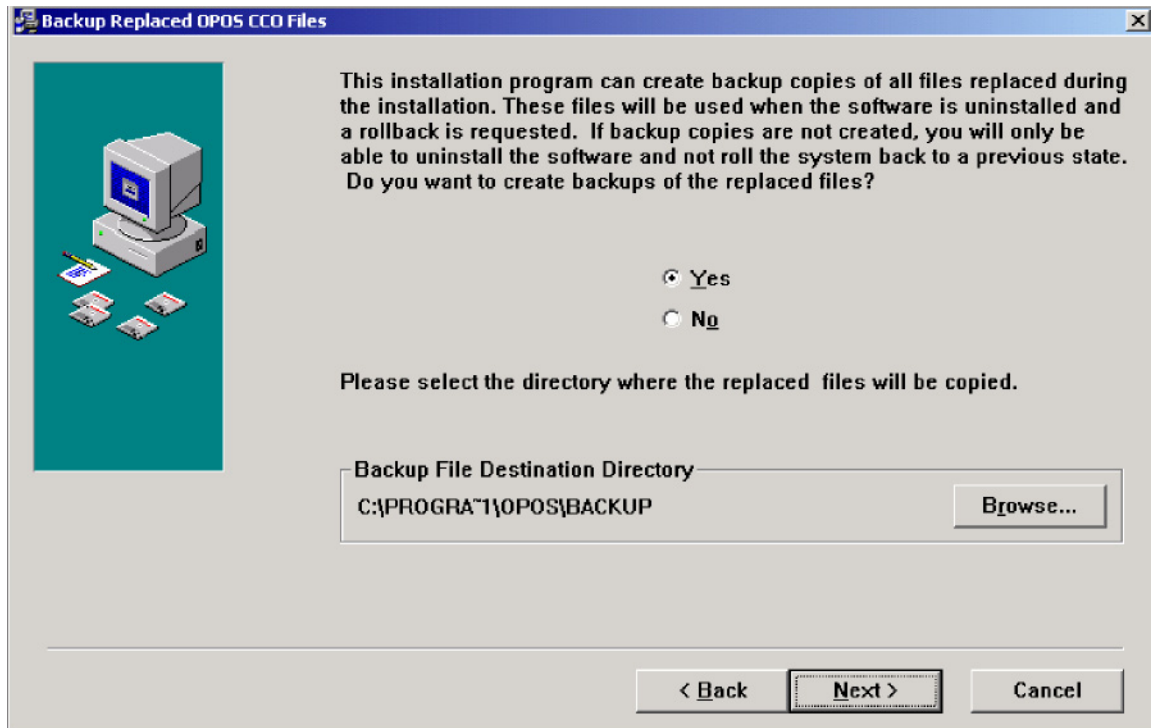


1.1.4. Click Next and the Choose Destination Location screen appears. Use the default and click Next

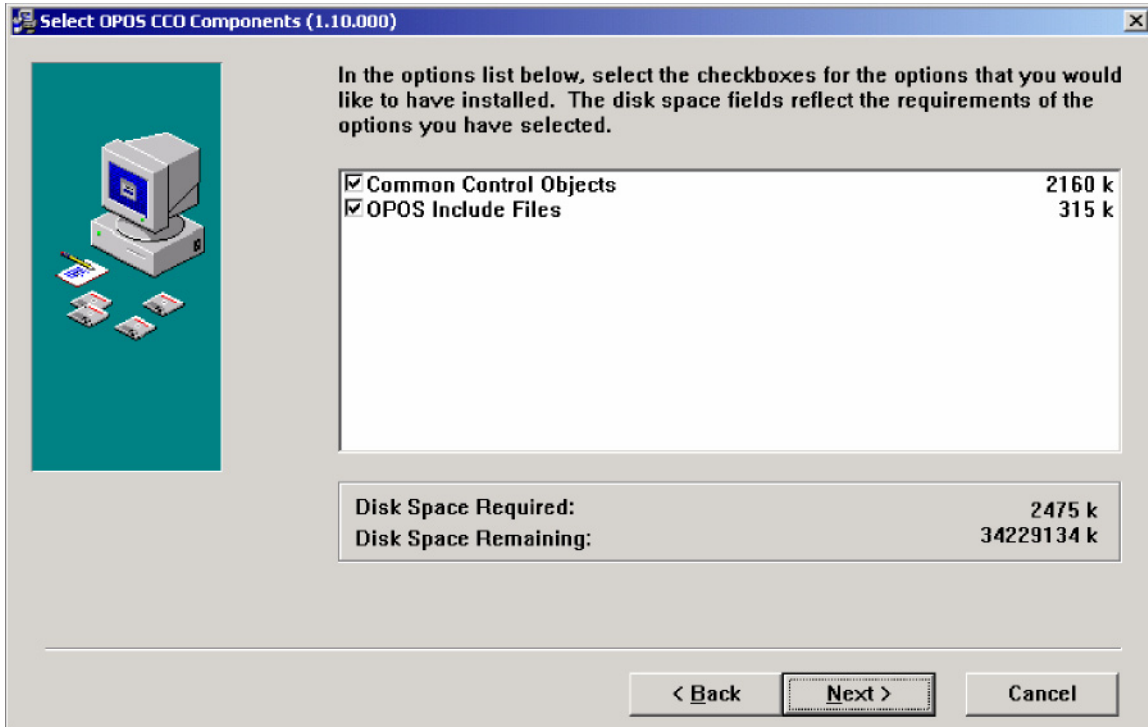


1.1.5. The Backup Replaced Files screen appears. Ensure Yes is selected and keep the **default path** then click Next.

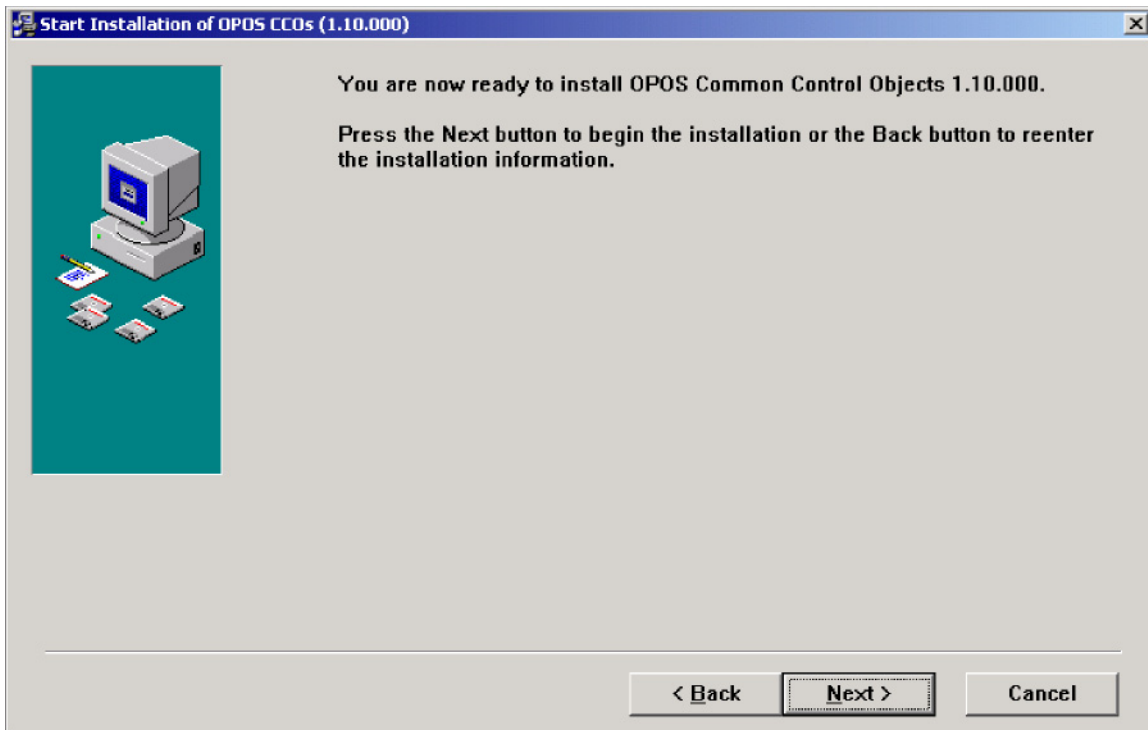




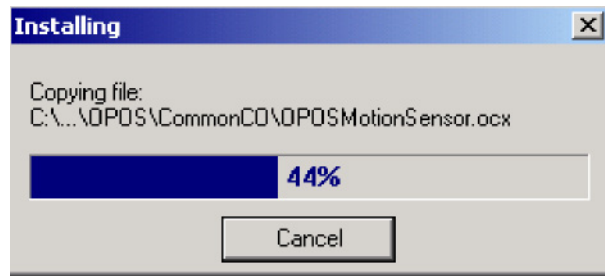
1.1.6. The Select Components screen appears. Ensure both options are selected and click Next.



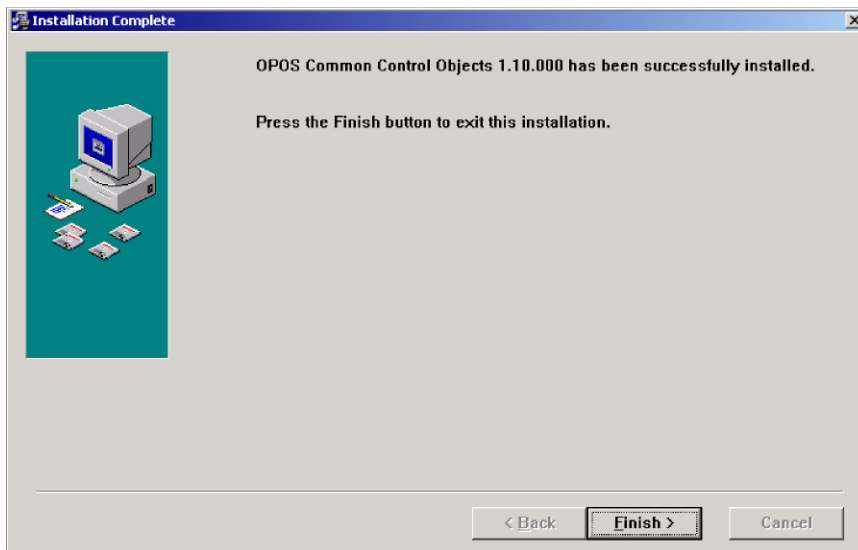
1.1.7. The Start Installation screen appears. Select Next.



1.1.8. The Installing screen pops up as shown below.



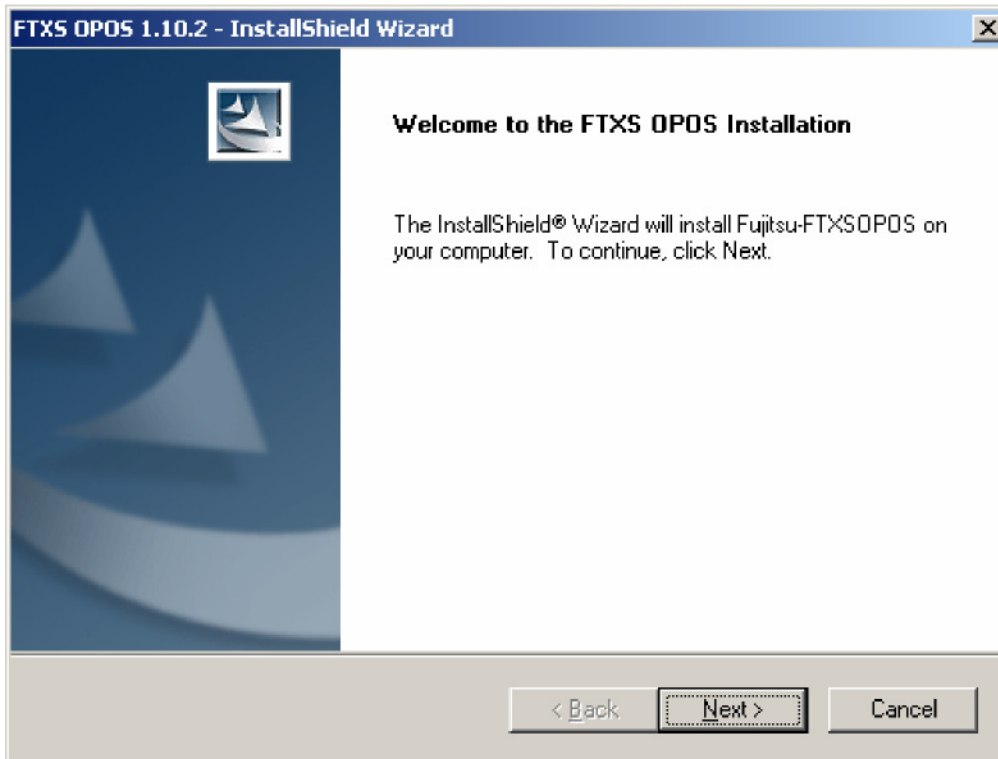
1.1.9. The Installation Complete screen is displayed. Click Finish



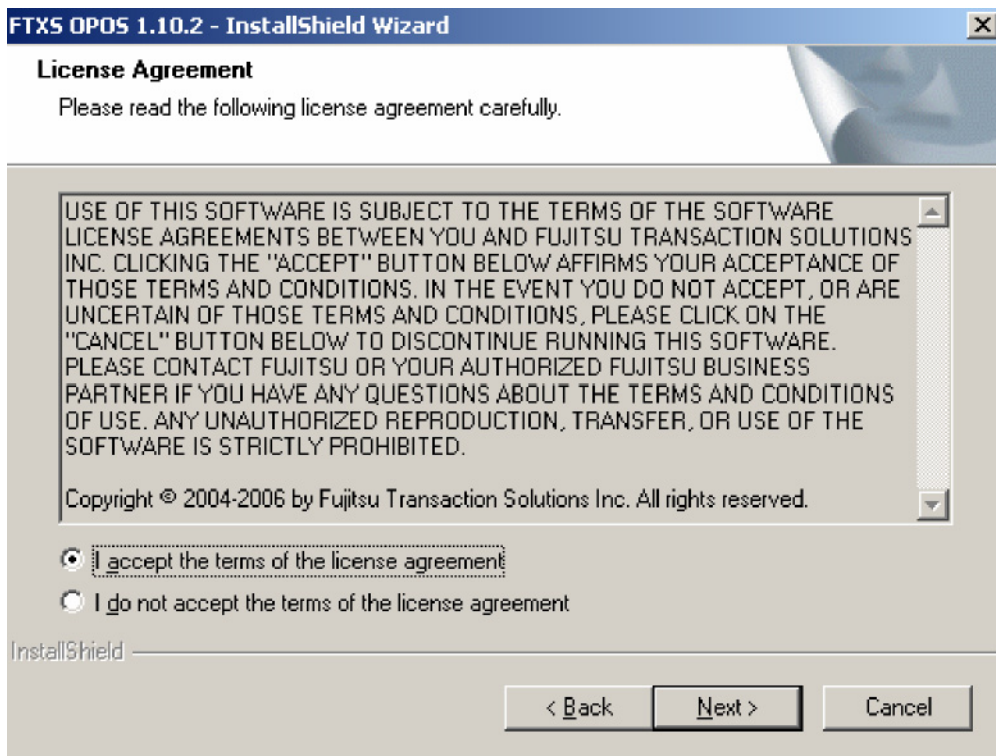
2. Installation of FTXSOPOS_1_10_2 for TP2000 MSR, Keylock and Keyboard

Note: the FTXSOPOS software is *not* required for the A758 printer to work with the TPG OPOS drivers. It is only being loaded as a test utility. This section, #2, can be skipped without hindering the A758 functions with OPOS.

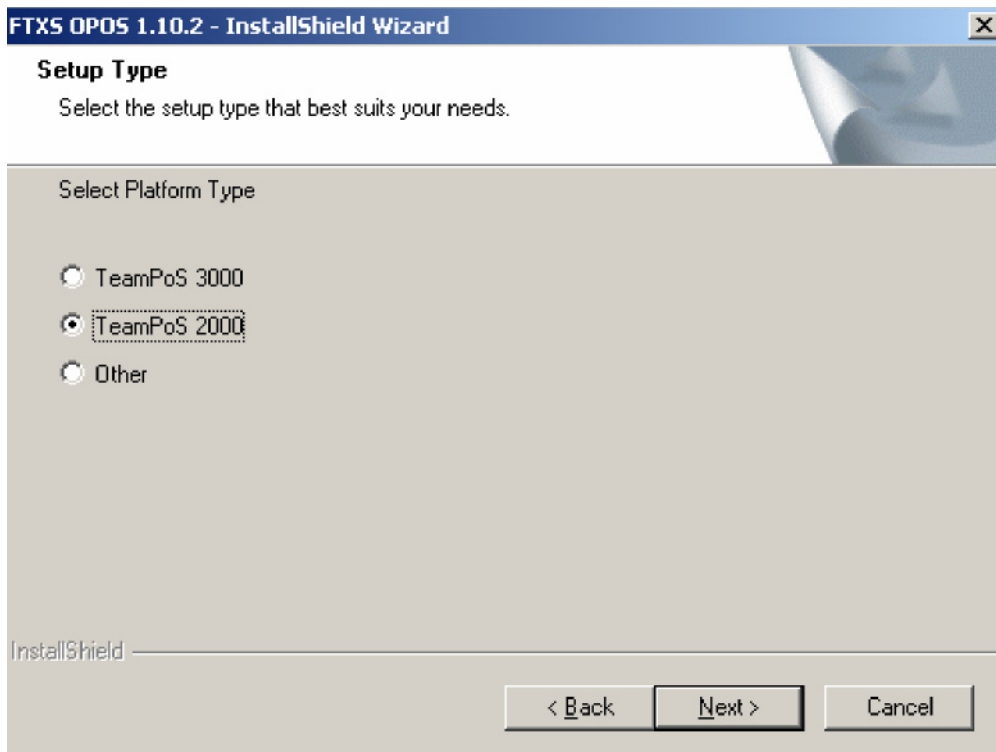
2.1. Run FTXSOPOS_1_10_2.exe on the ISS45 V7.1.2.1-050 CD in the OPOS\Fujitsu folder.



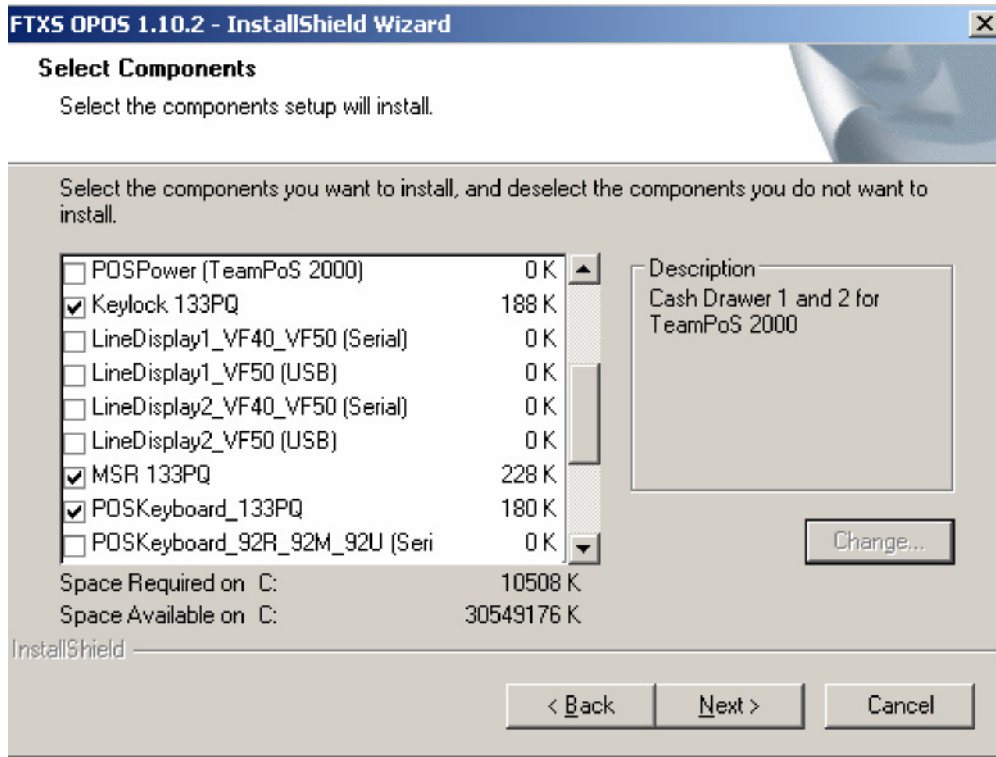
2.2. The Welcome screen appears. Click Next



2.3. The License screen appears. Select I accept and click Next



2.4. The Select type screen appears. Select TeamPoS 2000 and click Next



2.5. The select components screen is displayed

2.5.1 Select Keylock 133PQ

2.5.2 Select MSR 133PQ

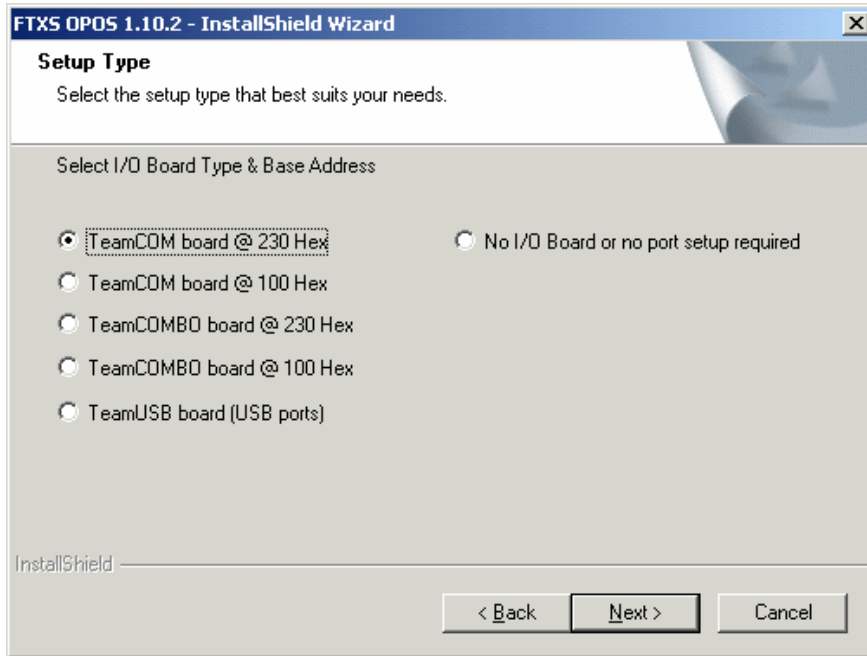
2.5.3 Select POSKeyboard_133PQ

2.6. Click Next

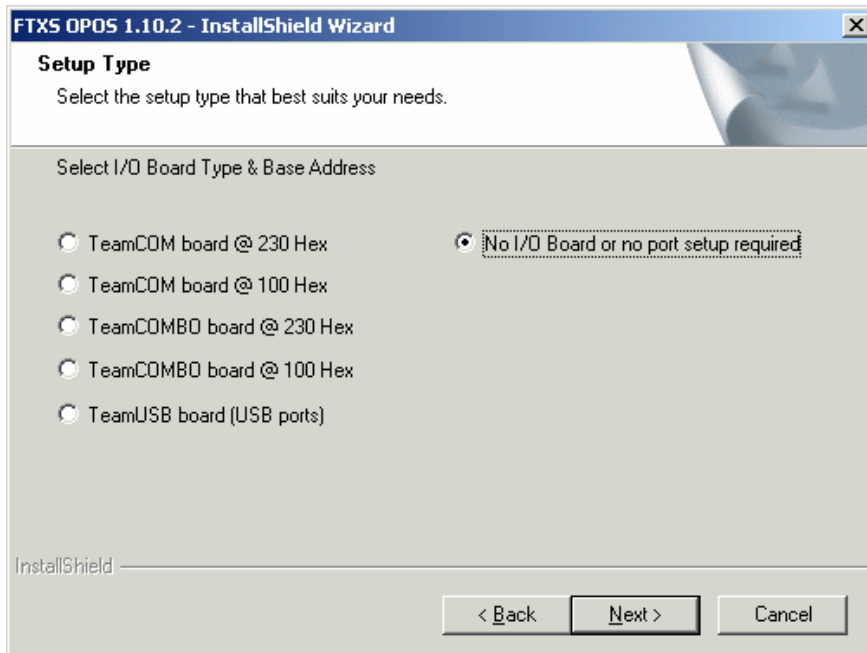
2.7 The select type screen appears. Select board type “Teamcom@230” for a **TP2K ‘A’** or **‘M’** board, or “No I/O Board or no port setup required” for a **TP2K ‘S’** board and then click Next

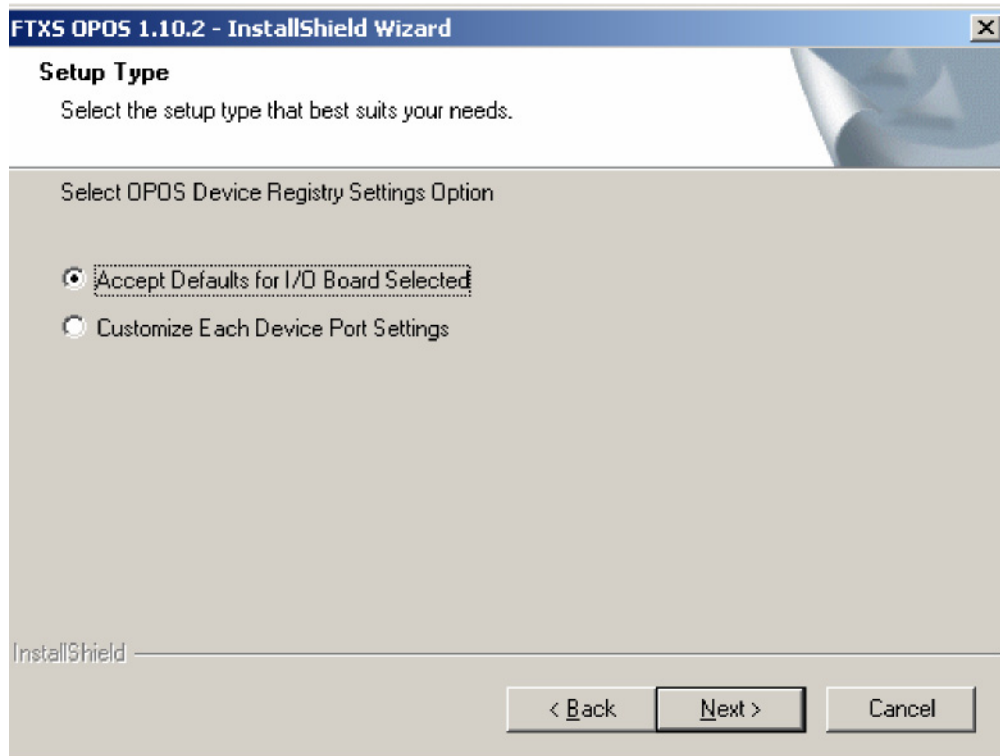


TP2K 'A' or 'M' board -



TP2K 'S' board -





2.8 Accept Default and click Next

2.9 The Setup has completed installing FTXS OPOS 1.10.2 is displayed

2.10 Click Finish

2.11 Use the FTXS OPOS test utility to insure that the MICR read, receipt print and cash drawer work correctly before continuing.



3. TPG OPOS Installation

3.1. Installation of TPG OPOS

- 3.1.1. Unzip file 189-1200308D.zip located in the DREN-1200308D.zip file to the **C:\TPG** folder. The file can be found on the V7. 1.2.1-050 distribution CD in the OPOS\TPG folder
- 3.1.2. Run install.bat in the TPG folder that 189-1200308D was extracted to above and select either **B -- A758** printer
- 3.1.3. Use Regedit to change the following three parameters
 - 3.1.3.1. HKLM\SOFTWARE\OLEForRetail\ServiceOPOS\POSPrinter
 - 3.1.3.1.1. Then A758
 - 3.1.3.1.2. For a **RS232 connected** TPG Printer
 - 3.1.3.1.2.1. Change Port to COM3
 - 3.1.3.1.2.2. Change Protocol to DTR
 - 3.1.3.1.2.3. Change BaudRate to 9600



4. TPG A758 Printer Configuration

4.1. ISS45 V7 Configuration

- 4.1.1. In ISS45 V7 POST Configuration 1 screen set Printer type OPOS Generic, Port None, MICR reader in use checked for the A758 printer and unchecked for the A758 printer, OPOS checked and Enable Check Flip unchecked

```
Printer:
Type.....> Opos Generic [↓]
Port.....> None [↓]
MICR reader in use.....> [X] OPOS..> [X]
Enable Check Flip.....> [ ]
```

- 4.1.2 If your cash drawer is connected to the printer then on the ISS45 V7 POST Configuration 1 screen check Drawer in use and check connected to printer

```
Drawer in use.....> [X]
connected to printer.> [X]
Dual drawer enabled..> [ ]
```

- 4.1.3 In the ISS45 V7 WinPOS.ini file, add the following lines

NOTE: The following lines are case sensitive

NOTE: If using an A758 printer

DefaultPrinterName=A758

OposMicr=Yes

DefaultMicrName=A758

If the cash drawer is connected to the printer add these lines to your WinPOS.ini file:

OposDrawer=Yes

DefaultDrawerName=A758- 1

DrawerNegativeCheck=Yes

- 4.1.4 ECC Void template and the A758 printer

NOTE: The default ECC Void template (_ECC_VOID) must be modified to print properly with the A758 printer

