

Technical Bulletin

Acer VM680G Setup with ScanMaster

SM-TECH-10:22
October 19, 2010

The following pages provide a setup guide for the new VM680G Core-i machines with ScanMaster.

The document also has a section starting on Page 8 describing the use of a “downgrade” version of Windows XP Professional.

The Windows Server 2008 install process is also described – go to Page 13.

This document assumes the dual operating system version of this machine, which will be replaced by a single O/S version as of October 22, and at that time the discussion of the dual O/S can be ignored.

This document and information are supplied to StoreNext Retail Technologies personnel and third parties to assist them in doing business with StoreNext. They are not to be used or distributed for any other purpose.

StoreNext Retail Technologies LLC endeavors to ensure that the information in this document is correct and fairly stated, but does not accept liability for any error or omission.

ACER Veriton VM680G Server setup with ScanMaster

The Acer VM680G comes preloaded with a dual boot OS. The disk drive is configured with three partitions: PQSERVICE 20GB NTFS, SYSTEM RESERVED 100MB, ACER 277.99GB NTFS. Either Windows 7 can be installed or you can downgrade to Windows XP Professional. After connecting the devices (keyboard, mouse, monitor, power cord) power on the Acer by pressing the power on button located on the right front of the Acer. The Acer will boot to the "Windows Setup Screen" for Windows 7 Professional. If you prefer to use the Windows XP operating system you must first complete the initial Windows 7 installation before downgrading to Windows XP. Details regarding the XP installation are located after the Windows 7 installation in this manual. If you want to load Server 2008 continue loading Windows 7 so you can create the Factory Restore and Driver/Applications DVD's.

Note: The only certified Operating Systems on the Acer VM680G are Windows 7 Professional / Windows XP Professional SP3 and Server 2008 SP1. Only Pervasive 10 has been certified on this platform. Only the 32 bit O/S versions are supported.

Note: This document is specific to the Acer VM680G model. Acer has loaded various utilities along with trial versions of software from different manufacturers. This document is not intended to support Acer utilities or any trial versions of software that Acer has preloaded. The user can choose to use or remove them at their discretion.

Note: If you plan on using the Acer as a Backoffice PC you will still perform the same basic configuration of the PC, just be sure to name it BACKOFFICE (or something other than SEVER) and be sure to load Pervasive Workgroup 32-bit instead of Pervasive Server.



Windows 7 Professional (Acer OEM Version) Small Store Server

This section describes configuring the OEM version of Windows 7 Professional preloaded on the Acer PC model VM680G.

The “user name and computer name” screen displays. When prompted type a “user name” (ie. OFFICE) and type a “computer name” (ie. SERVER)

1. Click NEXT.

The “Set a password for your account” screen displays. Set a password for your account, retype the password and also fill in the password hint box.

2. Click NEXT.

The “Please read the license terms” screen displays. Click on the check boxes to accept the “Microsoft Software License Terms” and “End User License Agreement.”

3. Click NEXT.

The “Help protect your computer & improve Windows automatically” screen displays.

4. Click “ASK ME LATER.”

The “Review your time and date” settings screen displays. Set the time zone, current date and time.

5. Click NEXT.

The “Select your computer’s current location” screen displays.

6. Typically you would choose “WORK NETWORK.”

“Windows is finalizing your settings” will display. A “Welcome Screen” will appear and display “2 min” with a small clock icon while Acer is preparing the computer for use. The “Register your Product” screen appears.

7. Click SKIP for now and register this later.

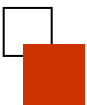
The “Acer recommends you protect your PC with McAfee Internet Security” screen appears.

8. Click “ACTIVATE LATER.”
9. Click NEXT.

NOTE: If installing Server 2008 you may want to allow the installation below to complete since PC will reboot when installation is completed and this would impact the creation of the DVD’s in the next section.

The Acer Veriton Logo will appear on the desktop and Acer will start to install 20 components. At the bottom of the screen the progress will show “Progress: 1/20 Install... please wait...,” as it counts up to 20. The screen will sit on Progress: 20/20 Install Cleanup until it is completely finished, lasting several minutes. Allow these to be installed before continuing as the Acer will reboot automatically after these are installed (approximately 23 minutes). After Acer reboots, type the password for the user you created prior.

10. Press ENTER.



McAfee will try to activate and the "Activate your McAfee Software" message box displays.

11. Click CLOSE.

CREATING A FACTORY IMAGE AND DRIVERS/APPLICATION DVD'S

At this point you MUST make an image of the PC in case you need to restore back to factory image. Acer provides a tool to create a factory image DVD and the Drivers/Applications that came preloaded.

To create the Factory Image DVD use Acer eRecovery Management. The Acer eRecovery Management is located under Start->All Programs->Acer->Acer eRecovery Management. Click YES when the User Account Control message box appears. Select "Create Factory Default Disc." Select Windows 7 for the OS. Verify you have enough blank disks. Insert DVD-R disk into drive and select START and follow the prompts on the screen. You can also create a Factory Image of Windows XP if desired.

IMPORTANT: You will need the Drivers DVD created below for the Server 2008 install.

Select "Create Drivers & Applications Disc. Verify you have enough blank disks. Insert DVD-R disk into drive and select START and follow the prompts on the screen.

Note: If Installing Server 2008 skip to the "Installing Server 2008" section.

Removal of Pre-installed Programs

Remove programs by selecting START -> Control panel-> Uninstall a program under Programs Category. When prompted by User Account Control click YES to continue. Follow uninstall screen prompts and also reboot when prompted.

1. Embassy Trust Suite- Acer Edition- select Remove all applications including Embassy Security Center and TPM Manager
2. McAfee Security Center- remove all components listed.
3. 4 Microsoft SQL programs- remove Microsoft SQL Server 2005 and Microsoft Server Native Client. Press F5 to refresh screen. The remaining 2 SQL programs have automatically been removed.
4. Microsoft Visual C++- uninstall both of these programs.
5. Uninstall any other programs you do not plan to use.
6. Reboot PC

CONFIGURING WINDOWS 7 FOR SCANMASTER

1. Log in as the user created during install process.

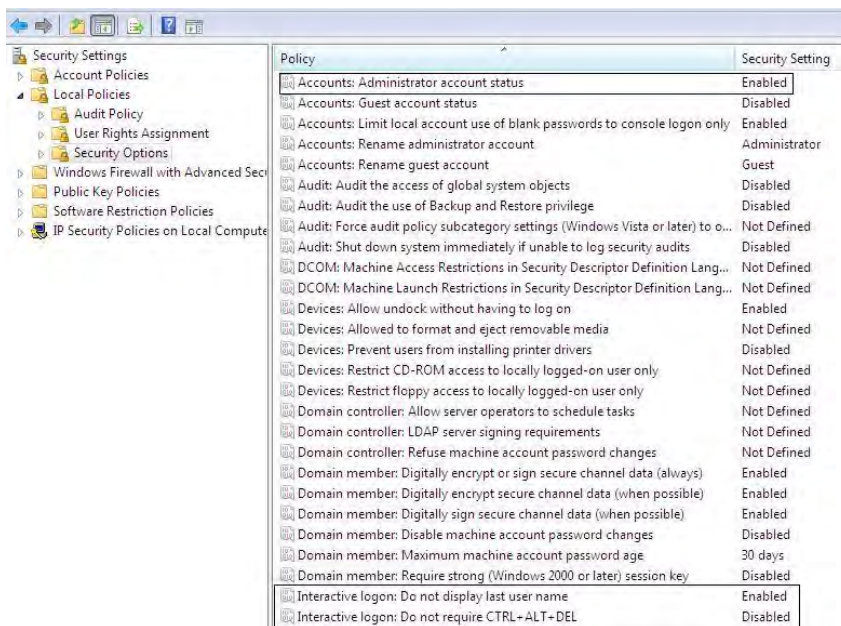
Note: At the time of this writing Solidcore was not available for Windows 7. Once this is available from Solidcore it will be made available.

Note: StoreNext supports Solidcore which replaces the need for anti-virus, UAC and firewall protection. This document assumes using Solidcore. It is possible that ScanMaster will install and run with anti-virus, firewall, etc., however, due to the number of different security products and variations of OS and network setups, i.e., local, WAN, ScanMaster is only tested with the following OS settings. ScanMaster is installed and working in several locations that use Wide Area Networks and it is the responsibility of the installing

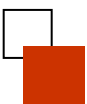


dealership or store IT department to setup the network and permissions to meet both the Store IT and ScanMaster requirements.

2. Click Start, and type "**secpol.msc**" in the search area and hit Enter. (You may receive a prompt from UAC, approve/login and proceed).
3. In the left list, choose "**Local Policies**", then "**Security Options**".
4. Set "**Accounts: Administrator account status**" to Enabled.
5. Set "**Interactive logon: Do not display last user name**" to Enabled.
6. Set "**Interactive logon: Do not require CTRL + ALT + DEL**" to Disabled.



7. Check that "**User Account Control: Admin Approval Mode for the Built-in Administrator account**" is set to Disabled.
 8. Double-click the User Rights Assignment under Security Settings and double click "**Log on as a service**", click Add User or Group, type in "Administrator" and click the Check Names button. Click Ok, click Apply, click Ok and close the screen.
 9. Log off and log back in as the Administrator (No password required yet).
 10. Click Start and select Control Panel. Select "User Accounts & Family Safety."
 11. Under "User Accounts," click "Change your Windows password."
 12. Click "Create a password for your account".
 13. Enter your password and confirm. Enter hint if so desired.
 14. Click to Create. The "Make changes to your user account" screen displays.
- Note:** Do not forget this password or you may have to reinstall Windows 7!
15. If desired, select "Create a password reset disk" and follow the screen prompts.



16. To turn off User Account Control (UAC) while you are at the “Make changes to your user account” screen, click the “Change User Account Control setting selection. Move the slider to Never notify and click **OK**.

Note: You will need to turn off UAC if you want to run ScanMaster as other than the Administrator user.

17. Return to the main Control Panel.

18. Click on System and Security.

19. Click on Windows Firewall.

20. In the left pane click on “Turn Windows Firewall on or off” under the Windows Firewall selection.

21. Click Turn off Windows Firewall in both sections.

22. Click the **OK** button.

23. Click the Back arrow.

24. Under Windows Update, click Turn automatic updating on or off.

25. Click the drop down arrow and select “Never check for updates.” Click **OK**.

26. Click Power Options.

27. Click the down arrow by the Show additional plans.

28. Click High Performance. Click on Change Plan setting. Set “Turn off Monitor” to NEVER.

29. Click the Back arrow to return to the main Control Panel.

30. In the left pane click Network and Internet.

31. Click Network and Sharing Center.

32. In the left pane click Change adaptor settings.

33. Right click the Local Area connection and click Properties.

34. Click the Configure button, click the Power Management tab and uncheck the “Allow computer to turn off this device to save power.”

35. Click **OK**.

36. Right click the Local Area connection and click Properties.

37. Highlight Internet Protocol Version 4 and click Properties.

38. Fill in the IP address information. Click **OK**.

39. Click Close.

40. Return to the Network and Sharing Center.

41. In the left pane, click Change advanced sharing settings. Ensure that the option Turn on network discovery and Turn on file and printer sharing are turned on. Scroll down and turn off Password protected sharing.

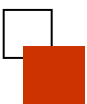
42. Click Save changes.



43. Return to the Control Panel.
44. Click Clock, Language and Region.
45. Under Date and Time set the time zone, date and time set the time zone, date and time.
46. Return to the Control Panel.
47. Click System and Security then click Action Center.
48. In the left pane, click Change Action Center settings.
49. Uncheck any items, i.e. Windows Update, Firewall, etc. that you don't want Windows to pop notification messages.
50. Click OK.
51. Return to Control Panel.
52. Select SYSTEM & SECURITY
53. Select SYSTEM
54. On left side of screen select ADVANCE SYSTEM SETTINGS
55. Under the PERFORMANCE section click on SETTINGS
56. On VISUAL EFFECTS tab select Adjust for best performance.
57. Click APPLY
58. Click OK

59. If the computer name or workgroup name needs changed under the Computer name, domain and workgroup settings, click Change setting.
60. If prompted for a reboot, accept and let the system reboot to update its settings.
61. Install Pervasive v10 Server and restart Server after Pervasive is installed. (Refer to Section "Installing Pervasive Server Engine on the Server." Only Pervasive v10 is supported for Windows 7).
62. Install ScanMaster.
63. After the ScanMaster installation, right click on the Start ScanMaster desktop icon.
64. Select Properties from the drop down list then under the Shortcut Tab click Advanced, click "Run as administrator," click Ok and then Ok to close.
65. At this point you should be able to run ScanMaster as either the Administrator or any of the other ScanMaster users created during the install.

Note: Before attempting to connect other POS or ScanMaster workstations to this PC, turn off the Firewall!



Downgrading to Windows XP Professional (Acer OEM Version)

If you choose to downgrade to the XP Professional OS follow the Acer Addendum that explains the process then continue to the next section. This Addendum is included in the box that the Acer is shipped in.

XP Professional (Acer OEM Version) Small Store Server

This section describes configuring the OEM version of Windows XP Professional preloaded on the Acer PC model VM680G.

After following the Acer Addendum to restore to the Windows XP Operating System when the PC restarts, the "Welcome to Microsoft Windows" screen displays.

1. Click **Next**.

The "Select Your System Settings" screen displays. The default selections are for United States, English (United States) Language, and US for the keyboard.

2. Click **Next**.

"What Time Zone are you in?" displays.

3. Select the appropriate Time Zone and click **Next**.

"The End User License Agreement" screen displays.

4. Select the "Yes, I accept..." radio-buttons for both agreements and click **Next**.

"The Help Protect your PC" screen displays

5. Select NOT RIGHT NOW radio button and click **Next**.

The "What's your computer's name?" screen displays.

6. Type **SERVER** in the computer name field and type a computer description.

7. Click **Next**.

The "What's your Administrator password?" screen displays.

8. Type an administrator password and confirm that password.

Note: It is recommended the password not be blank and be at least 6-characters in length. (It may be any combination of letters and numbers)

9. Click **Next**.

The "Is this computer in a domain?" screen appears.

10. Select "No, don't make this computer part of a domain" radio-button, and then click **Next**.

The system checks for Internet connectivity, and then displays the "How will this computer connect to the Internet..." screen.

11. Select the **Skip** button.

The "Ready to register with Microsoft?" screen appears.

12. Select "No, not at this time" radio-button response, and click **Next**.

The "Who will use this computer?" screen appears.



13. At least one user name must be entered. Enter **Local** in the “Your name” field and click **Next**.

The “Thank You!” screen displays.

14. Click **Finish**.

PC reboots

15. Login as the Administrator.

The Acer Progress: 1/28 Install... please wait... message box appears at the bottom, center of the screen until installing is complete. The PC will reboot automatically after completing Process 5/28. Log back in to continue this process. Click CLOSE when prompted by the McAfee message box and click CLOSE when prompted that “your computer is not fully protected” message box. When the “Click to create Acer Factory Default Backup Disc” message appears, click on the X to close this. Upon reaching Progress: 28/28 (about 20 minutes) the PC will restart. Log back in and click REJECT to the Embassy Trust Suite Users License message box.

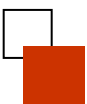
16. Turn off the Welcome screen by clicking **Start** → **Control Panel**→ **User Accounts**→**Select User Accounts under the Control Panel icon**→ **Change the way users log on or off**.
17. Unselect “Use the Welcome Screen” and click Apply Options.
18. Close the User Accounts and Control Panel window.
19. Check and set the correct date and time if needed.

CHANGING DISPLAY SETTINGS ON THE WINDOWS XP PROFESSIONAL SERVER

1. Right-click on the Windows Desktop and select Properties from the pop-up menu.
2. Click the **Settings** tab.
3. Set the Screen Area to **800x600** pixels (depending on the monitor you may wish to use the recommended default optimal resolution) and click **Apply**.
4. Click the **Appearance** tab.
5. In the “Windows and Buttons” drop down box, select **Windows Classic Style**.
6. Click **OK**.
7. Right-click the **Start** button.
8. Choose **Properties** from the pop-up menu.
9. Select the “Classic Start Menu” radio-button.
10. Click **OK**.

CONFIGURING YOUR SERVER

1. Select Start->Settings-> Control Panel
2. On left side click **Switch to Classic View**.
3. Double click **Power Options**



4. Select **Presentation** under Power Schemes.
5. Click **Apply**. Click **OK**.
6. Double click on **Network Connections**
7. Right-click on **Local Area Connection**.
8. Select **Properties**.
9. Click **CONFIGURE**
10. Click **POWER MANAGEMENT**
11. Uncheck "Allow the computer to turn off to save power."
12. Click **OK**.
13. Right-click on **Local Area Connection**.
14. Select **Properties**.
15. Highlight **Internet Protocol (TCP/IP)** and click the **Properties** button.
16. Set the Static IP Address, Subnet Mask and click **OK, OK and close window**.

Note: Consult your network administrator to obtain an IP Address and subnet mask.

17. Right-click on **My Computer** and select **Properties** from the pop-up menu.
18. Click the Computer Name Tab.
19. Click the **Change** button.
20. Confirm the "Workgroup" radio button is selected and enter the name of **STORE** for you workgroup, and click **OK**.

The welcome to the STORE workgroup window displays.

21. Click **OK**.
You are prompted to reboot the computer.
22. Click **OK**.
23. Click **OK**.
24. Click **Yes** to restart your computer.
25. After PC restarts click **REJECT** to the Embassy Trust Suite User License and click **CLOSE** to the McAfee Warning.

Note: StoreNext supports Solidcore which replaces the need for anti-virus, UAC and firewall protection. This document assumes using Solidcore. It is possible that ScanMaster will install and run with anti-virus, firewall, etc., however, due to the number of different security products and variations of OS and network setups, i.e., local, WAN, ScanMaster is only tested with the following OS settings. ScanMaster is installed and working in several locations that use Wide Area Networks and it is the responsibility of the installing dealership or store IT department to setup the network and permissions to meet both the Store IT and ScanMaster requirements.



REMOVAL OF PRE-INSTALLED SOFTWARE

From Start -> Settings -> Control Panel -> Add/Remove Programs remove the following:

1. Embassy Trust Suite- Acer Edition- select Remove all applications including Embassy Security Center and TPM Manager
2. McAfee Security Center- remove all components listed.
3. 4 Microsoft SQL programs- remove Microsoft SQL Server 2005 and Microsoft Server Native Client. Press F5 to refresh screen. The remaining 2 SQL programs have automatically been removed.
4. Microsoft Visual C++- uninstall both of these programs.
5. Uninstall any other programs you do not plan to use.

Reboot PC and log back in as Administrator

CONFIGURING THE FIREWALL, AUTOMATIC UPDATE AND VIRUS PROTECTION OPTIONS (XP SERVICE PACK 3)

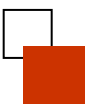
1. Click **Start**→**Settings**→**Control Panel**→**Security Center**.
2. In the Resources section (on the left), click “Change the way Security Center alerts me”.
3. Uncheck all three Alert Setting options.
4. Click **OK**.
5. On the bottom, click Windows Firewall (under “Manage security settings for”).
6. Click “Off”.
7. Click **OK**.
8. On the bottom, click Automatic Updates (under “Manage security settings for”).
9. Click “Turn off Automatic Updates”.
10. Click **OK**.
11. Close the Security Center and Control Panel windows.

INSTALL PERVASIVE SERVER

Install Pervasive v10 Server and restart Server after Pervasive is installed. Refer to “Installing Pervasive Server Engine on the Server.” in Chapter 2 of *ScanMaster Installation & Support Guide v 2.07.01*

INSTALL SCANMASTER

Install ScanMaster. Refer to Chapter 2 of *ScanMaster Installation & Support Guide v 2.07.01*



WINDOWS XP PROFESSIONAL AS SERVER – SHARING ADJUSTMENTS

1. Select **Programs →Accessories→Windows Explorer**.
The Explorer Window displays.
2. Click My Computer.
3. Click “Local Disk C:” (or the drive on which ScanMaster was installed).
4. Right-click on the folder name SCANIDOS.
5. Choose “Sharing and Security...” from the pop-up menu.
6. Click on the hyperlink “If you understand the security risks...”

The Enable File Sharing window displays.

7. Select the **Just enable file sharing** radio button.
8. Click **OK**.
9. Ensure that both “Share this folder on the network” checkbox and “Allow network users to change my files” checkbox are enabled.
10. Click **OK**.
11. Close all open windows.

NOTE: On the POS: If you experience a problem with the POS mapping to the LAN drive (usually F) redo step #9 by unchecking “allow network users...” and click OK, then recheck this option and click OK.



Installing Server 2008

1. Insert Server 2008 DVD into Drive and reboot PC
2. When prompted press any key to boot from DVD drive.
3. Windows is loading files...appears

Windows Server 2008 screen displays

Language to install: (English)

Time and currency format : English (United States)

Keyboard or input method: (US)

4. Click NEXT to accept defaults.
5. Click INSTALL NOW

Click on "Windows Server 2008 Standard (Full Installation)

6. Click NEXT

"Please read the license terms" displays

7. Click on box, "I accept license terms."
8. Click NEXT

"Which type of Installation do you want?" displays

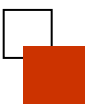
9. Click CUSTOM (Advanced)

"Where do you want to install Windows?" displays

10. Click on DISK 0 Partition 3 which is named "Acer."
11. Click on Drive Options (Advanced)
12. Click Delete
13. Click OK to delete all data
14. Click on DRIVE 0 Unallocated Space
15. Click on NEW
16. Click APPLY
17. Click FORMAT
18. Click OK

Make sure DISK 0 Partition 3 is highlighted

19. Click NEXT



Installing Windows... appears.

Wait while Windows is:

Copying Files

Expanding Files

Installing Features

Installing Updates

Completing Installation

20. PC will reboot

"Please wait while Windows sets up your computer" displays.

The Installing Windows screen reappears and is on the Completing Installation step.

21. PC reboots again.

Remove Server 2008 Disc from drive.

"The user password must be changed before logging on the first time" appears

22. Click OK

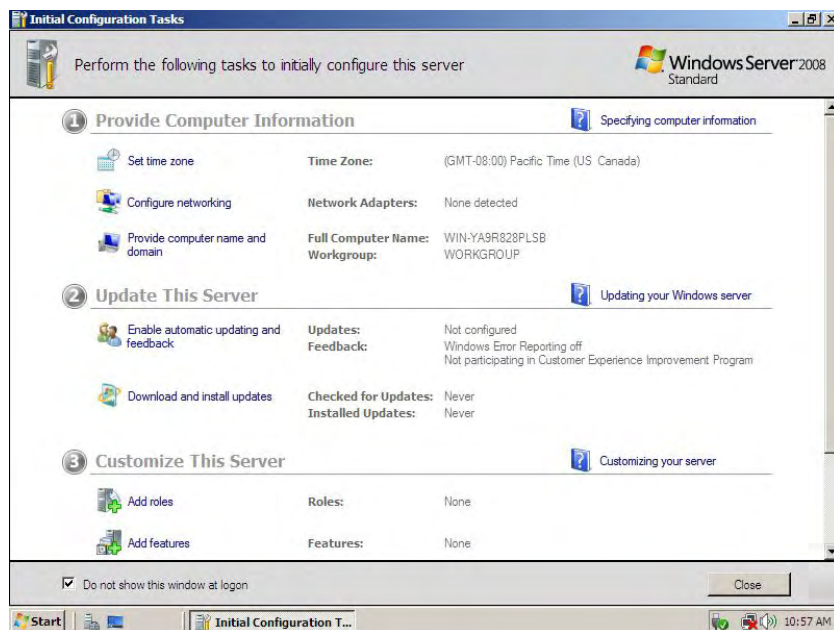
23. Type in **!Password1** as a temporary password

24. Click on ARROW button

"Your password has been changed" displays

25. Click OK

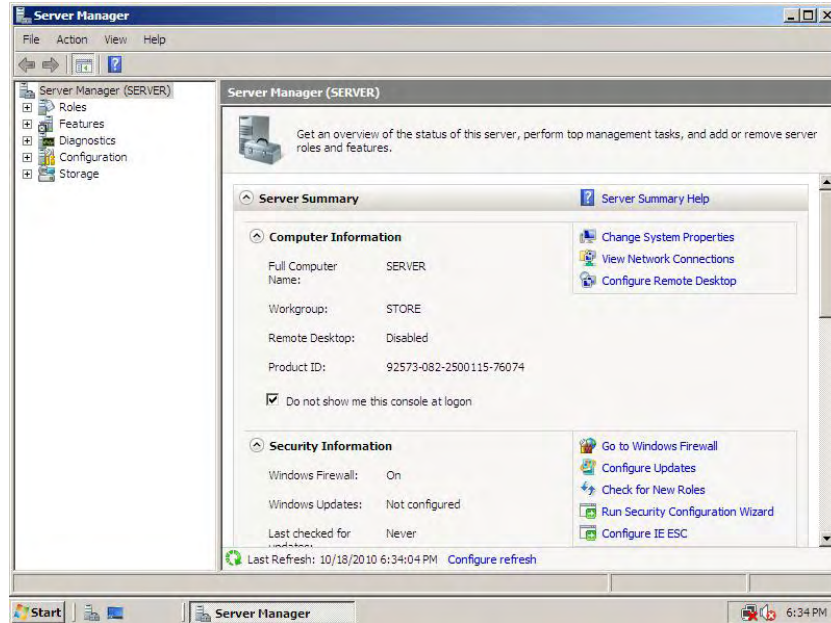
26. The Initial Configuration Tasks screen displays. At the bottom of the screen click the "Do not show this window at logon" and CLOSE the screen.



27. The Server Manager screen displays. Click "Do not show me this console

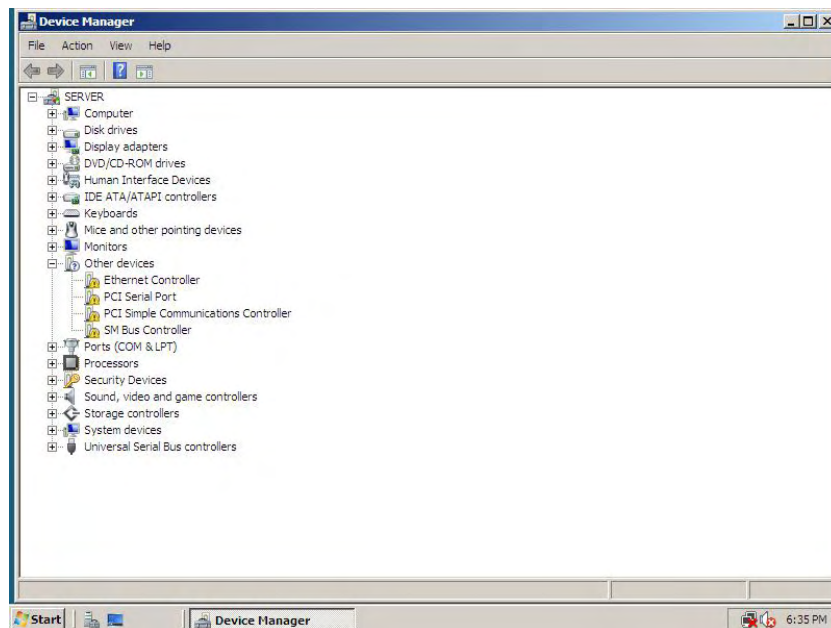


at logon.” Click “Change System Properties” under Computer Information section. Click Change and type in the computer name SERVER. Change workgroup name if needed and click OK. A “You must restart” message appears. Click OK. Click CLOSE to System Properties. Click RESTART NOW button.



28. Login as Administrator.

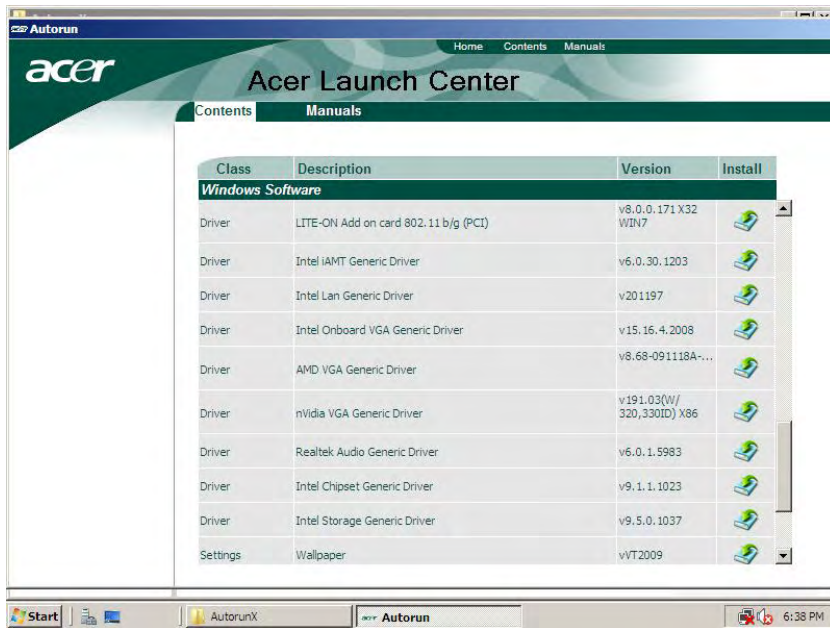
29. Click Start and type “Device Manager” in the search area and double click on device manager. 4 devices under “other devices” will need drivers installed. Close screen.



30. Insert Drivers/Application DVD created earlier
Navigate to the AutorunX folder and double click on autorunX



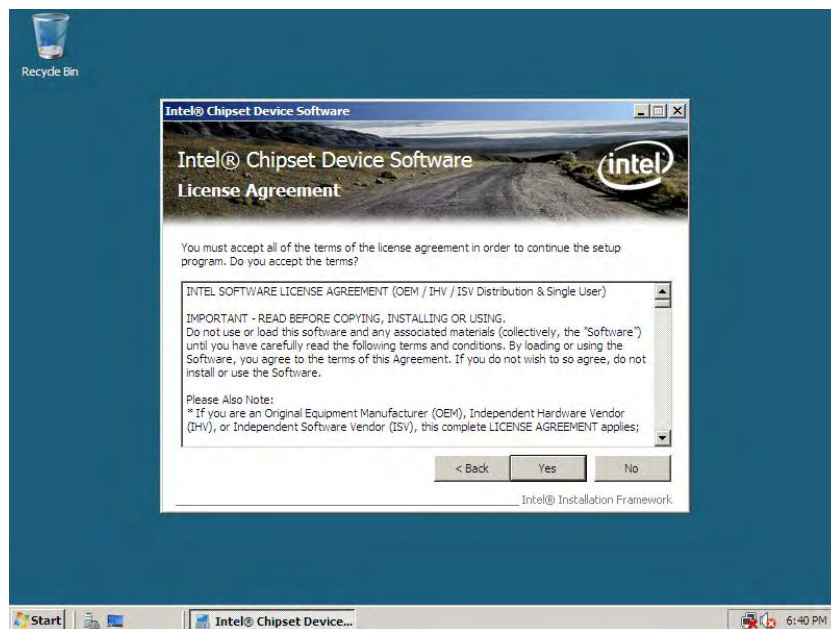
31. Click on CONTENTS button.



32. Install the Intel Chipset Generic Driver v9.1.1.1023. Look for the “driver” under the “Class” heading and double click Install icon.

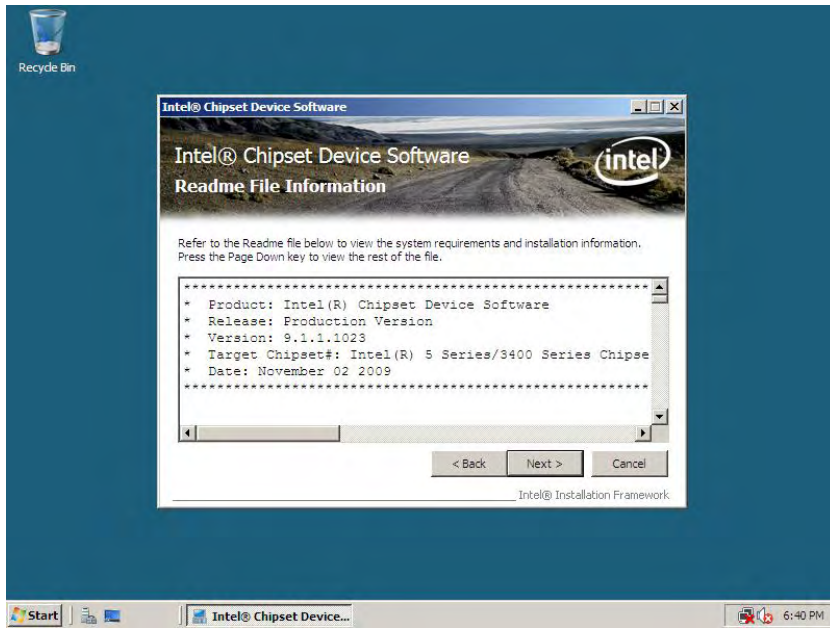


33. Click NEXT.

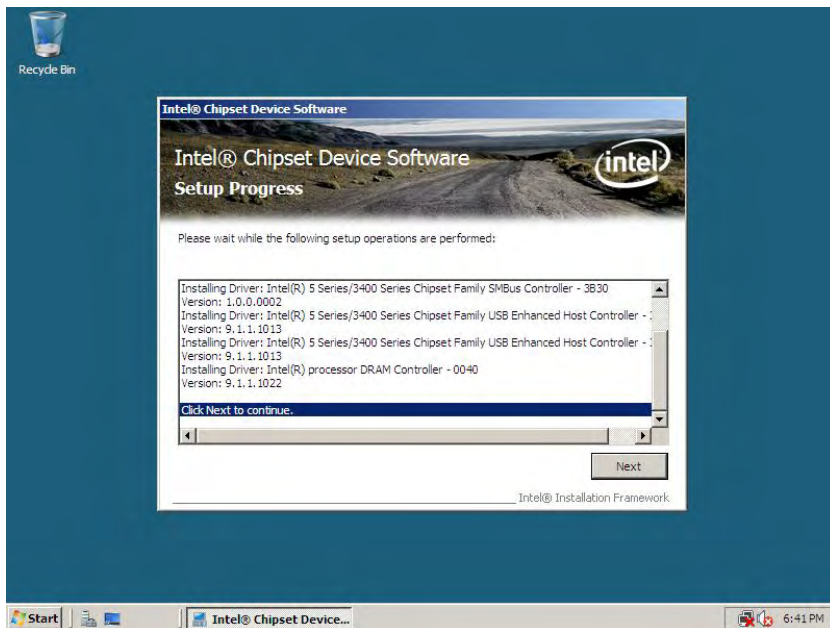


34. Click YES.





35. Click NEXT.



36. Click NEXT.



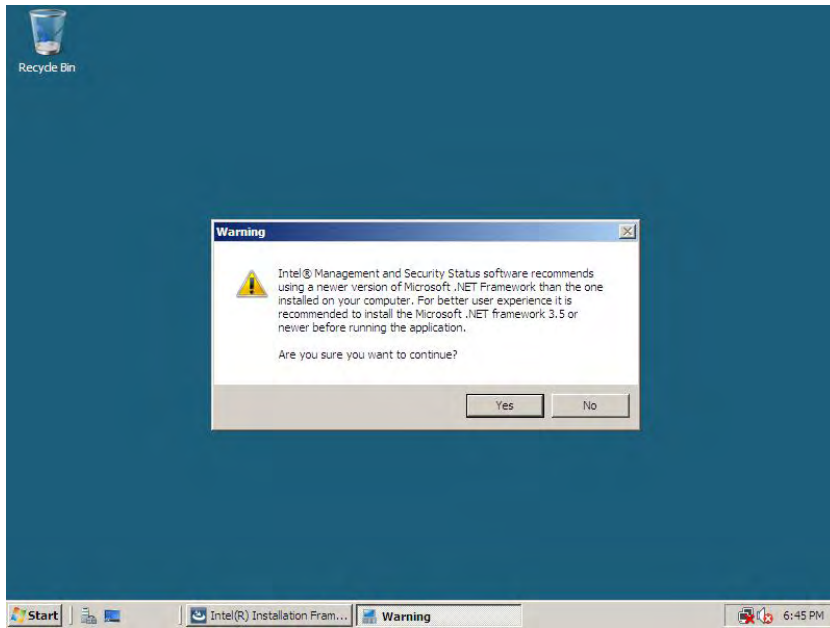


37. Click FINISH and PC reboots.

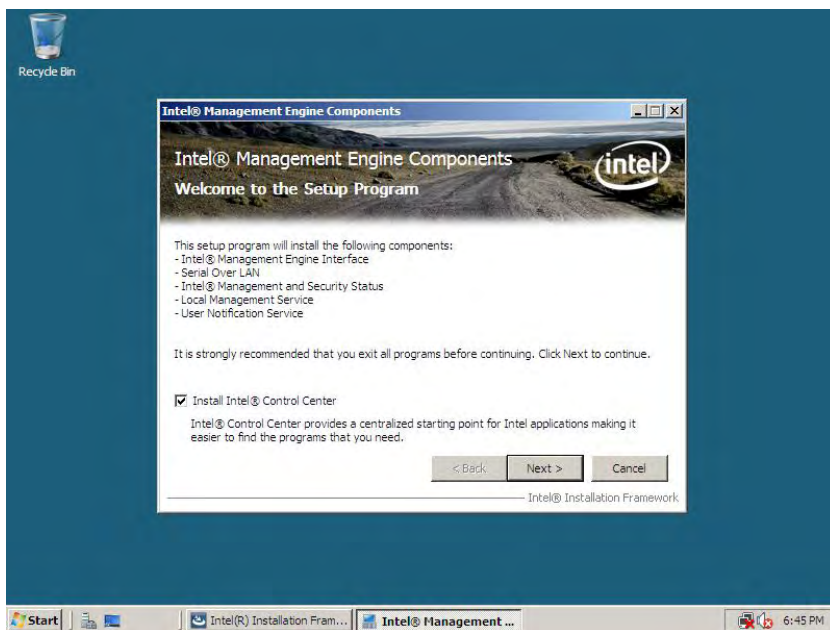
38. Login and navigate to the AutorunX folder and double click on autorunX. Click on the Contents button.

39. Install Intel iAMT Generic Driver v6.0.30.1203. Look for the “driver” under the “Class” heading and double click Install icon.





40. Click Yes

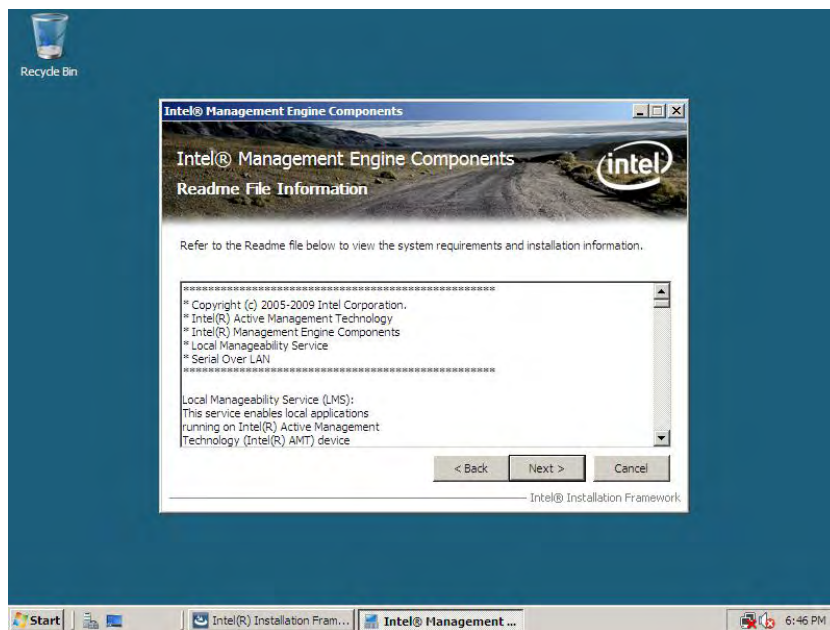


41. Click on Install box and Click NEXT



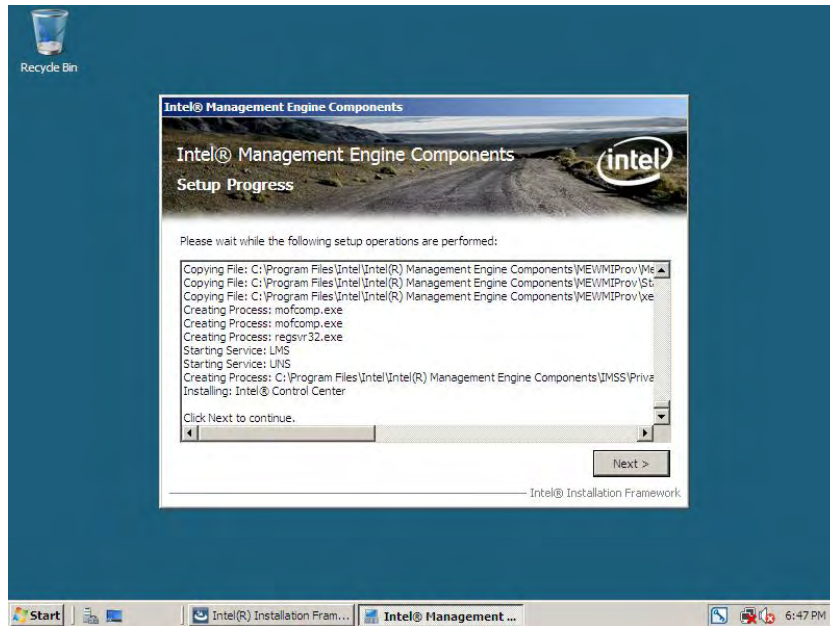


42. Click YES

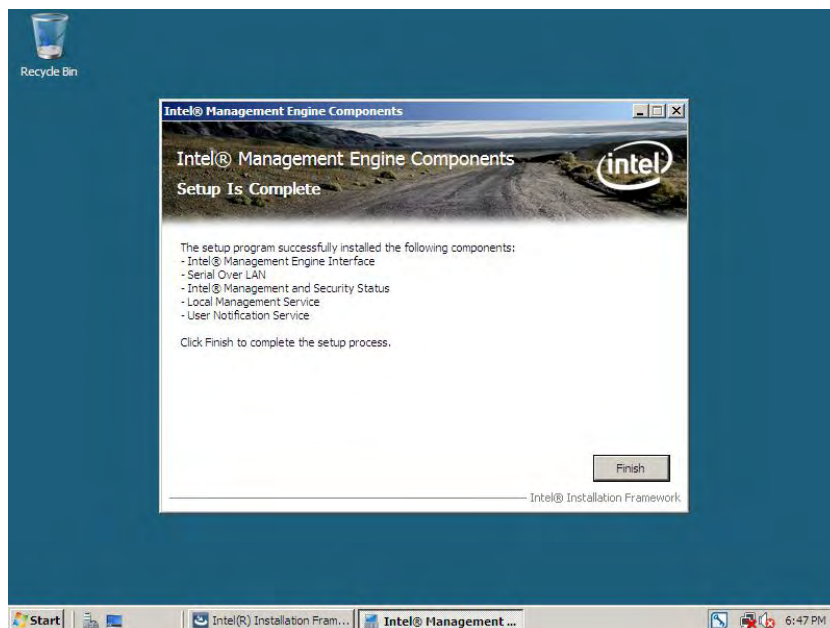


43. Click NEXT





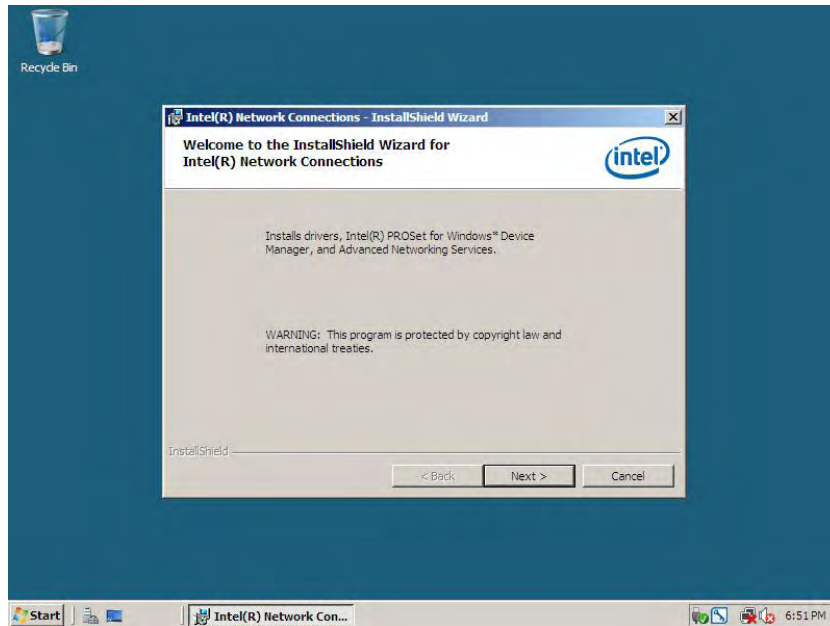
44. Click NEXT



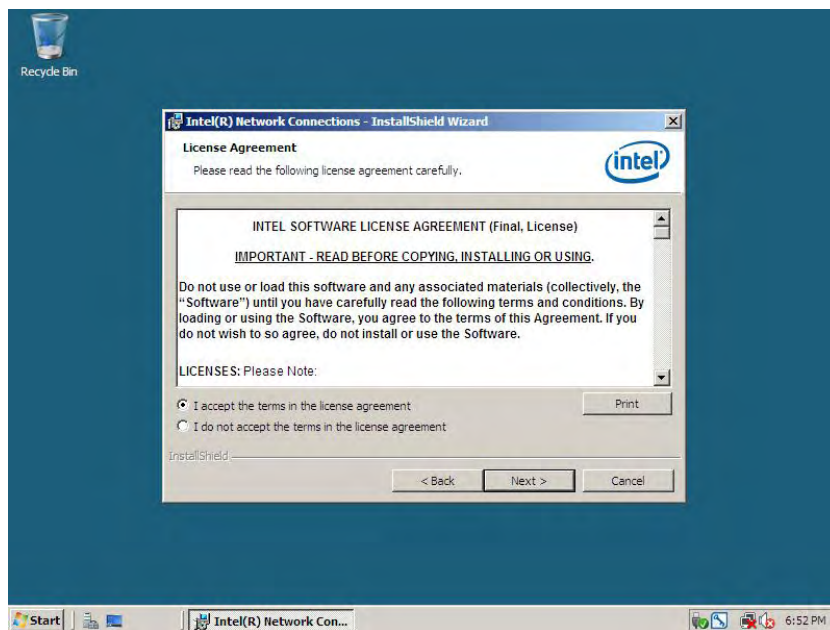
45. Click FINISH and close Acer Launch Center.

46. Install the Driver for the LAN Adapter- Intel 82578DM Gigabit Network Connection
Locate the driver Prowin32.exe v4.0.100.1124 on the Intel website
Copy to Folder on your PC and double click on Prowin32.exe.

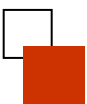


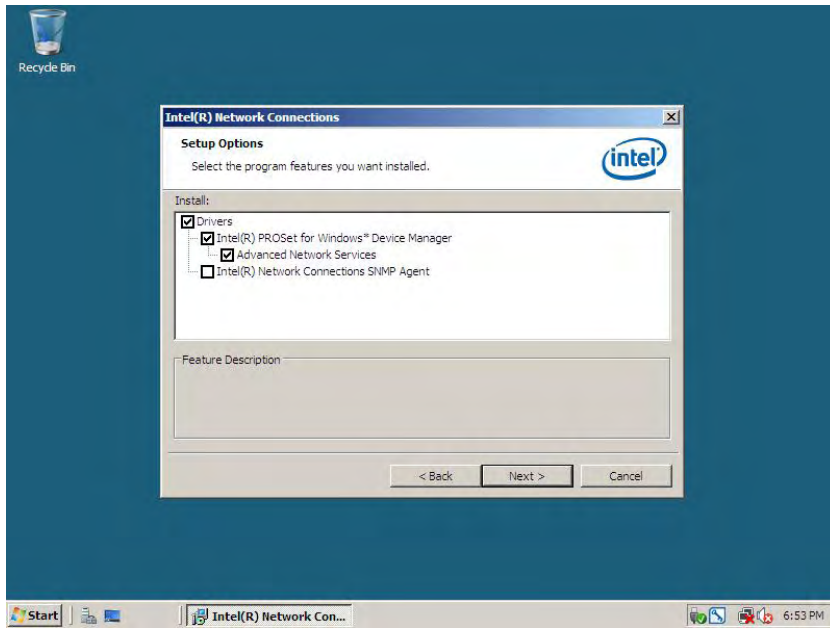


47. Click NEXT.

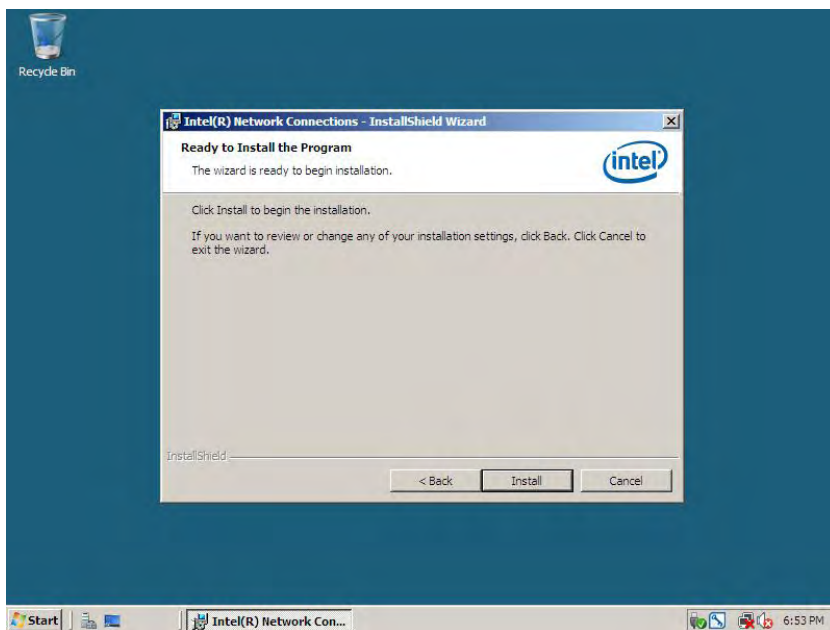


48. Accept agreement and Click NEXT.



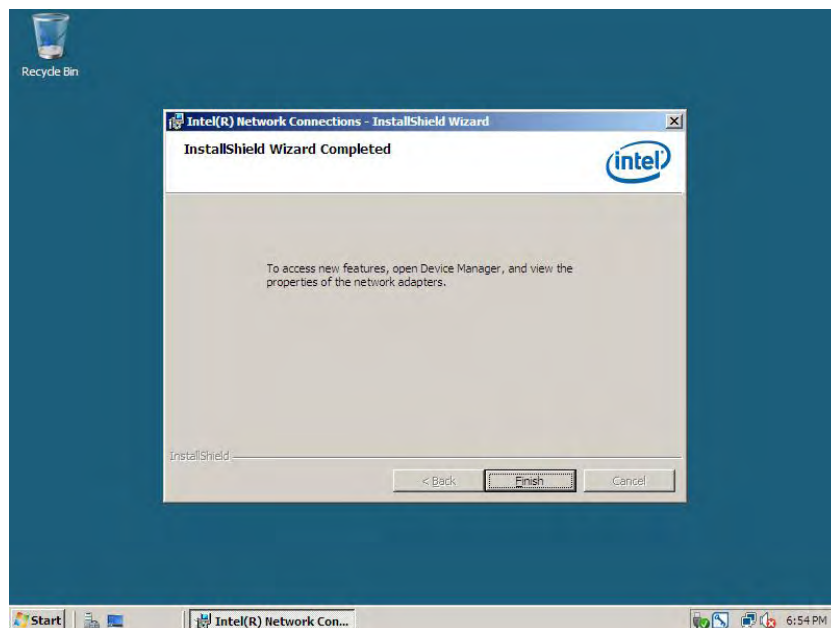
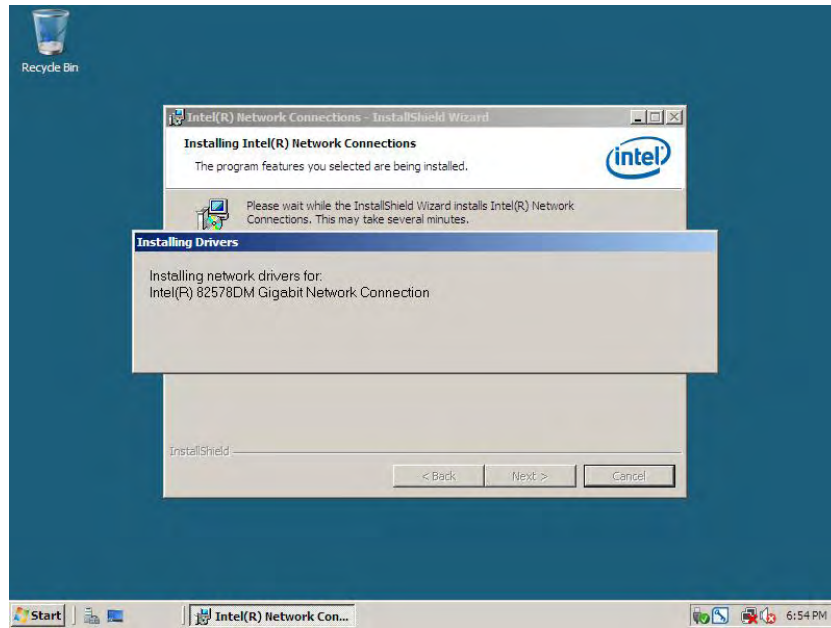


49. Click NEXT.



50. Click INSTALL.

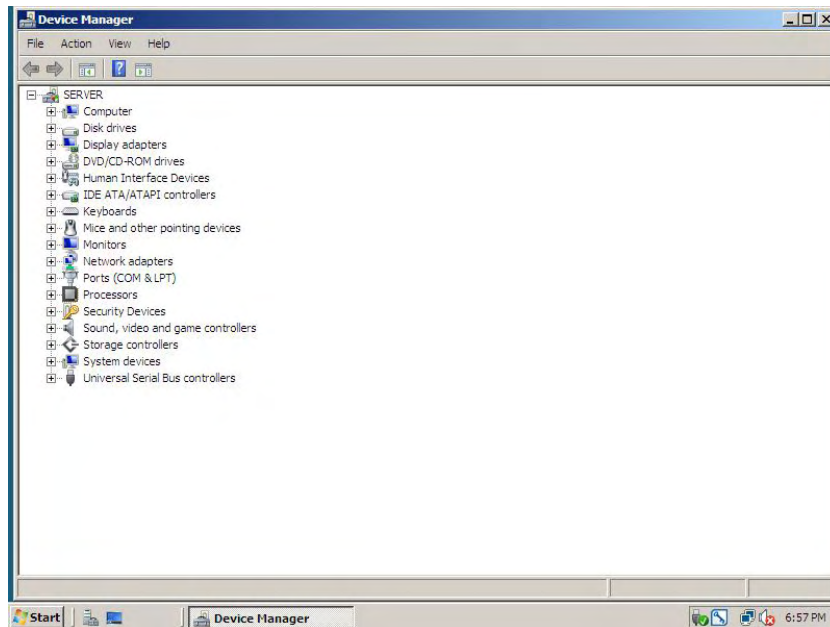




51. Click FINISH.



52. Click Start and type "Device Manager" in the search area and double click on device manager. Verify all devices are installed and there are no warnings. Close screen.



53. Click Start, and type "**secpol.msc**" in the search area and hit Enter. In the left list, click "**Local Policies**", then double click "**Security Options**" to open the right pane.
54. Set "**Accounts: Guest account status**" to **Disabled**.
55. Set "**Interactive logon: Do not display last user name**" to **Enabled**.
56. Set "**Interactive logon: Do not require CTRL + ALT + DEL**" to **Disabled**.
57. Check that "**User Account Control: Admin Approval Mode for the Built-in Administrator account**" is set to **Disabled**.
58. Double-click the User Rights Assignment under Security Settings and double click "**Log on as a service**," click Add User or Group, type in "Administrator" and click the Check Names button. Click OK, click Apply, click OK.
59. Next open up "**Account Policies**" and double click "**Password Policy**," Double click Password must meet complexity requirements and set to Disable. Click Apply, then close. At this point the Administrator's password can be changed to a less complex password if so desired. To do so, Click Start and select Control Panel. Select "User Accounts." Next Click "Change your password." Next enter your current password and new password and confirm. Click "Change Password."

Note: Do not forget this password or you may have to reinstall!

60. Click Start and bring up the Control Panel. Select Classic View
61. **Select Date and Time** – set the correct Time Zone, date and time. Click OK when done.
62. Select Network and Sharing Center – Select options by clicking on the down arrow controls.



63. **Network discovery** – Turn on and click APPLY. A Network discovery message box will appear. Click the appropriate option (Private or Public). Normally the selection would be Private. The Network discovery status should change to “Custom” and File sharing status should change to “On”. Use the Change settings in this section to change the Workgroup name, otherwise the default name is Workgroup.
64. **File sharing** – Turn on and Apply if not already on.
65. **Printer sharing** – Turn on and Apply if required.
66. **Password protected sharing** – Turn OFF if status is On.
Under Tasks on the left side of the screen – Click Manage network connection. In the Network Connection screen, right click the Local Area Connection and click Properties.
67. Highlight the Internet Protocol Version 4 and click Properties.
68. Set up the IP address section. Click OK when done.
69. Close back to the Control Panel.
70. Double click Power Option – select High Performance.
71. Click Change Plan Settings. Set Turn Off Display = NEVER and Save Changes.
72. Next select User Accounts (lower left of the screen).
73. Select Turn User Account Control on or off. Uncheck Use User Account Control (UAC).
74. Click OK.
75. Click Restart Now.
76. Logon as Administrator and bring up Control Panel.
77. Double click Windows Firewall.
78. Select Change Settings and click the Off selection.
79. Click Apply.
80. Click OK.
81. From Control Panel select Personalization. Click on “screen saver” and Uncheck “on resume, display login screen.” Click APPLY. Click OK. (You can also adjust screen saver # of minutes if desired.)
82. Windows Update – should be off by default. Refer to StoreNext’s website concerning SolidCore and how it affects the need to run anti-virus, firewall and Window’s updates.
83. Install Pervasive v10 Server and restart Server after Pervasive is installed. (Refer to Section “Installing Pervasive Server Engine on the Server.” Only Pervasive v10 is supported for Server 2008.
84. Install ScanMaster
85. After the ScanMaster installation, right click on the Start ScanMaster desktop icon. Select Properties from the drop down list then under the Shortcut Tab click Advanced, click Run as administrator, click Ok and then Ok to close. At this point you should be able to run ScanMaster as either the Administrator or any of the other ScanMaster users created during the install.

