

Technical Bulletin

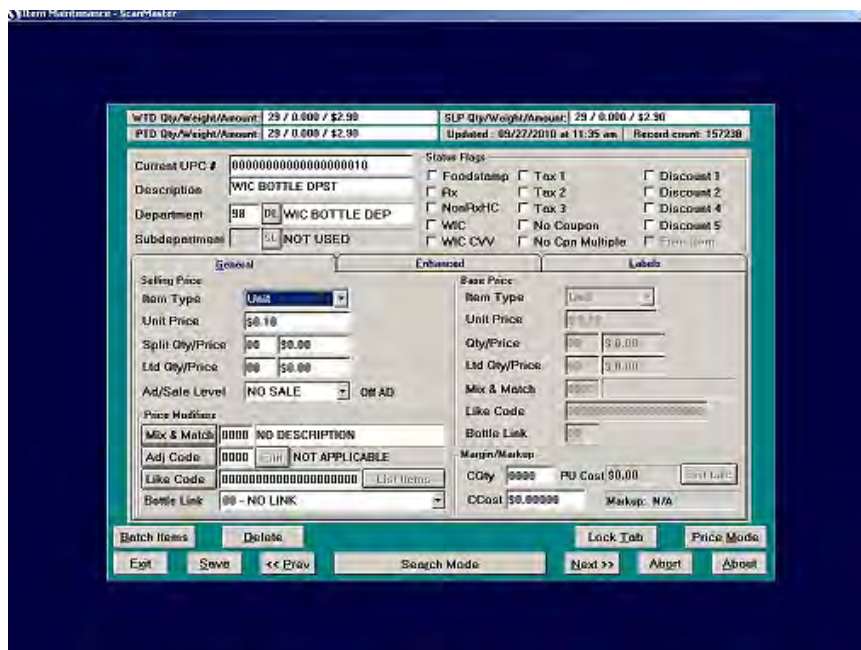
ScanMaster WIC and Bottle Deposits

SM-TECH-10:22
October 19, 2010

This process provides a suggested setup to handle bottle deposit requirements with WIC. Note that the process need apply only in states requiring bottle deposit that cannot be paid for by WIC.

SUGGESTED SETUP

- 1) For WIC items with bottle deposit use a store generated PLU # and setup Item in item maintenance and attach bottle deposit to the PLU item.
- 2) Setup PLU # that will be used to ring the Bottle Deposit in separate transaction.



The screenshot displays the 'Item Maintenance - ScanMaster' window. The 'General' tab is active, showing the following details:

- WTD Qty/Weight/Amount:** 29 / 0.000 / \$2.90
- SLP Qty/Weight/Amount:** 29 / 0.000 / \$2.90
- Updated:** 09/27/2010 at 11:35 am
- Record count:** 157238
- Current UPC #:** 0000000000000000010
- Description:** WIC BOTTLE DPST
- Department:** 98 DE WIC BOTTLE DEP
- Subdepartment:** SL NOT USED
- State Flags:**
 - Foodstamp
 - Rx
 - NonPhc
 - WIC
 - WIC CVV
 - No Coupon
 - No Can Multiple
 - Tax 1
 - Tax 2
 - Tax 3
 - Discount 1
 - Discount 2
 - Discount 4
 - Discount 5
- Price Modifiers:**
 - Mix & Match:** 0000 NO DESCRIPTION
 - Adj Code:** 0000 NOT APPLICABLE
 - Like Code:** 00000000000000000000
 - Bottle Link:** 00 - NO LINK
- Base Price:**
 - Unit Price:** \$ 2.90
 - Qty/Price:** 00 \$ 0.00
 - Ltd Qty/Price:** 00 \$ 0.00
 - Margin/Markup:**
 - COey:** 0000
 - PU Cost:** \$0.00
 - CCost:** \$0.00000
 - Markup:** N/A

Buttons at the bottom include: Batch Items, Delete, Lock Tab, Price Mode, Exit, Save, << Prev, Search Mode, Next >>, Abort, and About.

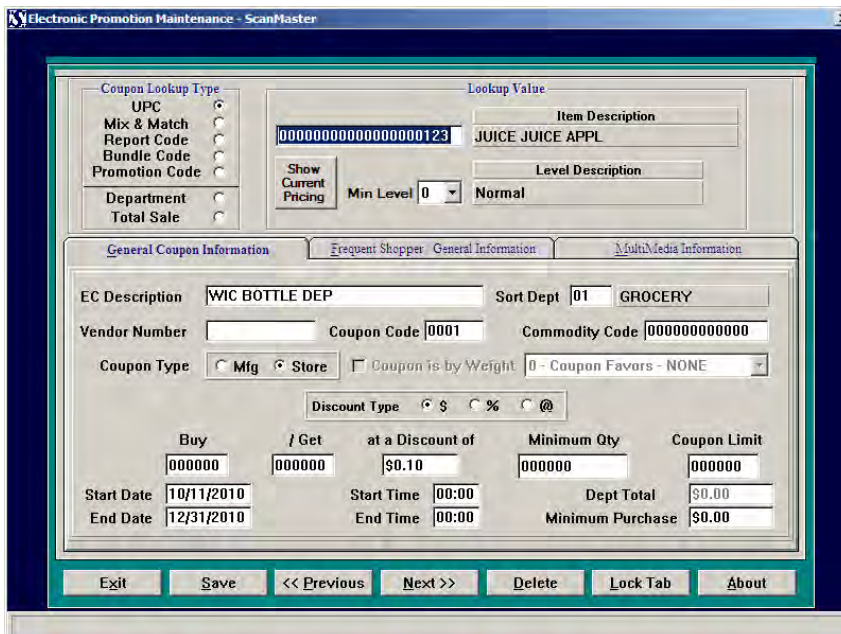
This document and information are supplied to StoreNext Retail Technologies personnel and third parties to assist them in doing business with StoreNext. They are not to be used or distributed for any other purpose.

StoreNext Retail Technologies LLC endeavors to ensure that the information in this document is correct and fairly stated, but does not accept liability for any error or omission.

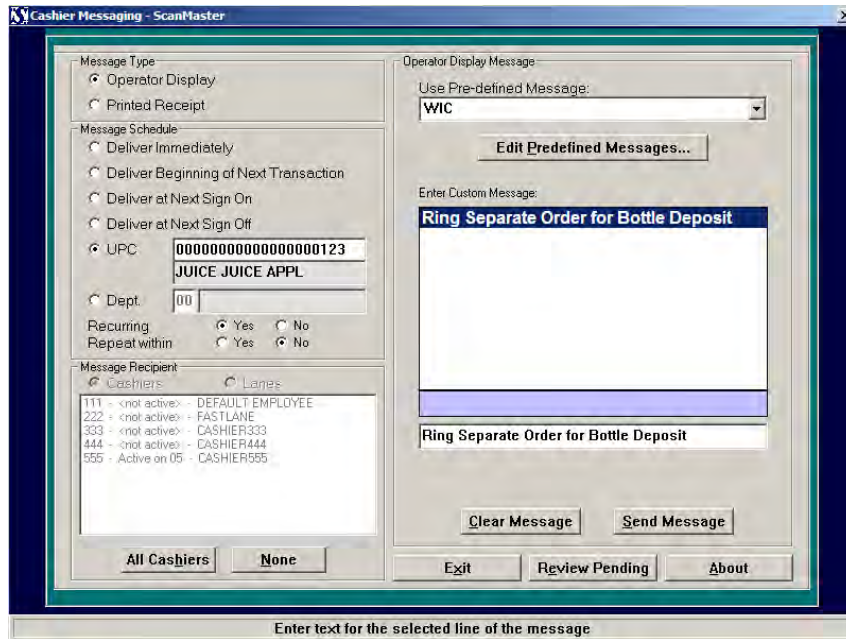
- 3) Setup in Promotion/Coupon Editor the message to print on the receipt



- 4) Setup Store Electronic Coupon to deduct the amount of the WIC bottle deposit amount and enter the coupon code so the WIC message will print a slip at the end of the receipt.



- 5) Setup Cashier Messaging to remind cashier about how to handle WIC bottle deposit



- 6) Below (and on the following page) is an example of WIC receipt and the separate receipt for the bottle deposit. You may need to setup multiple Electronic Coupons, PLU #'s and Coupon Code #'s if more than 1 bottle deposit amount applies.



STORENEXT - RETALIX
1-800-533-0855

0001 05 05006002 09/27/10 11:33am 555

JUICY JUICE APPL	\$2.99
WIC BOTTLE DEP	\$0.10
WIC BOTTLE DEP	\$0.10-SC
JUICY JUICE APPL	\$2.99
WIC BOTTLE DEP	\$0.10
WIC BOTTLE DEP	\$0.10-SC
JUICY JUICE APPL	\$2.99
WIC BOTTLE DEP	\$0.10
WIC BOTTLE DEP	\$0.10-SC
JUICY JUICE APPL	\$2.99
WIC BOTTLE DEP	\$0.10
WIC BOTTLE DEP	\$0.10-SC

ITEM SUBTOTAL	\$12.36
E COUPONS TOTAL	\$0.40-S
SUBTOTAL	\$11.96
TOTAL	\$11.96

WIC	\$11.96
WIC ID #	M00000000000000000001
MID #	0

CHANGE	\$0.00
--------	--------

E COUPONS APPLIED

WIC BOTTLE DEP X 0004	\$0.40
-----------------------	--------

OF ITEMS: 4

FSA ELIGIBILITY SUMMARY:
NON-RX \$0.00
RX \$0.00
FSA TOTAL: \$0.00

RING WIC BOTTLE DEPOSIT SEPARATE
FROM WIC ORDER
SEE WIC BOTTLE DEP QUANTITY
UNDER E COUPONS APPLIED SUMMARY

RING QUANTITY OF WIC BOTTLE DEP
ITEMS AND SCAN SLIP

