

Technical Bulletin

Epson OPOS v268E — for Installations with Epson TM-H2000 Printers

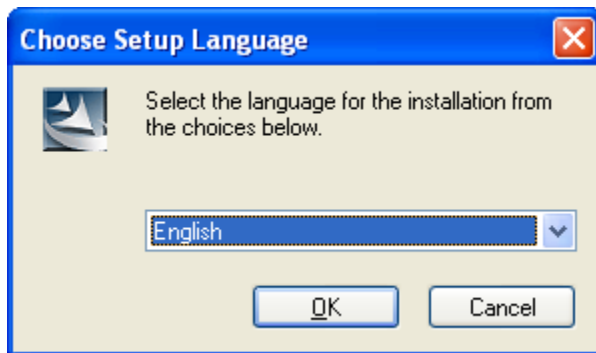
ISS45-TECH-12:14
October 19, 2012

The attached document outlines the installation procedure for Epson OPOS v268E. This version of Epson OPOS is required when installing the TM-H-2000 printer.

Epson OPOS v268E (For Installations w/ Epson TM-H2000 Printers)

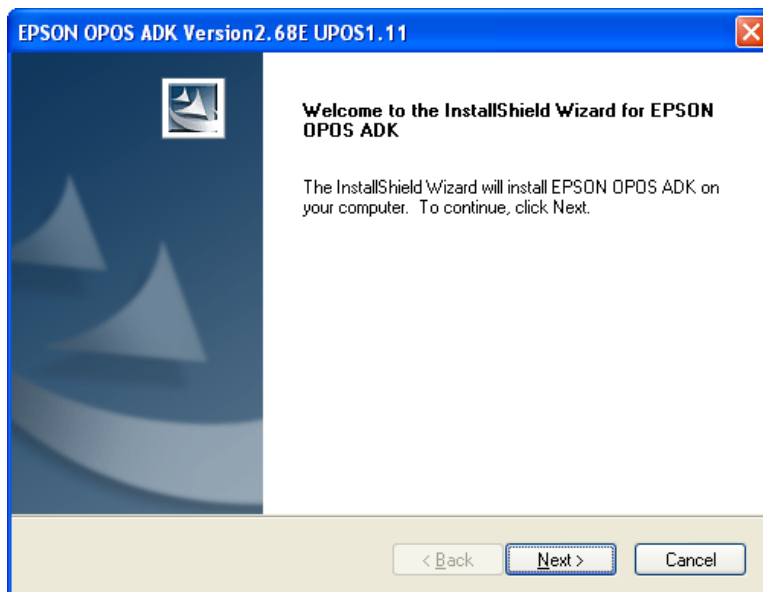
Note: If you are upgrading an existing Epson OPOS, Uninstall Epson OPOS ADK from Add/Remove Programs in Windows Control Panel and reboot before continuing.

1. Login to the workstation as the Administrator.
2. From the StoreNext Website obtain ADK268E.EXE
3. Create a folder called EpsonOPOSv268E and Double click to extract contents to this folder.
4. Browse to EpsonOPOSv268E\OPOSADK\V268E\DISK1 folder.
5. Double-click **SETUP.EXE** to launch the installation procedure.



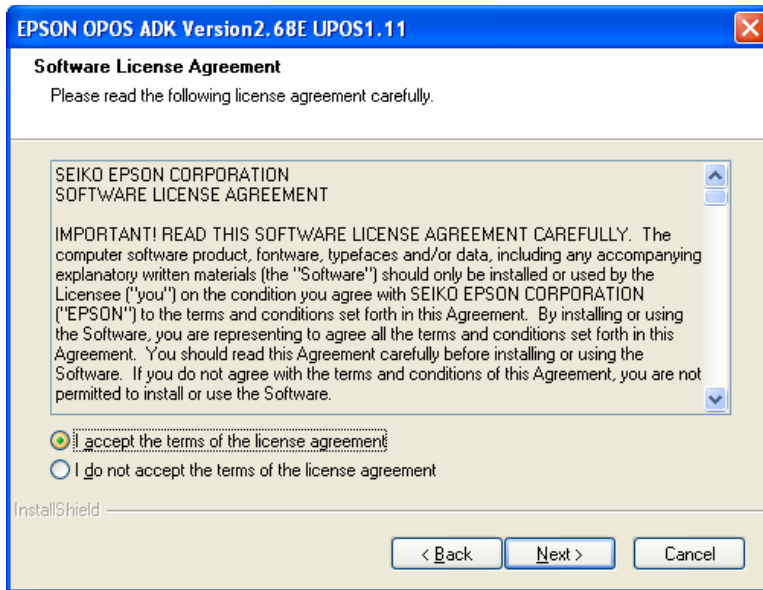
The Choose Setup Language Screen displays.

6. Select language and click **OK**.



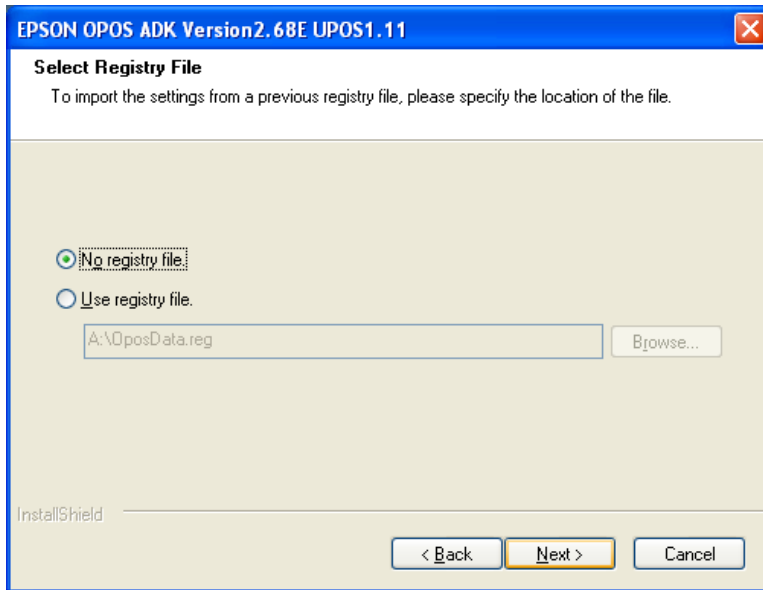
The Welcome Screen displays.

7. Click **Next**.



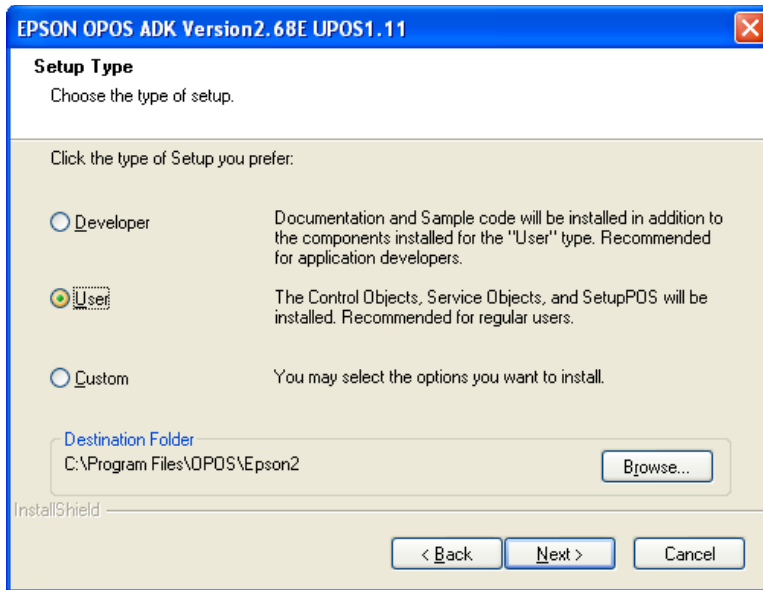
The Licensing Screen displays.

8. Select the first radio button “I accept” and click **Next**.

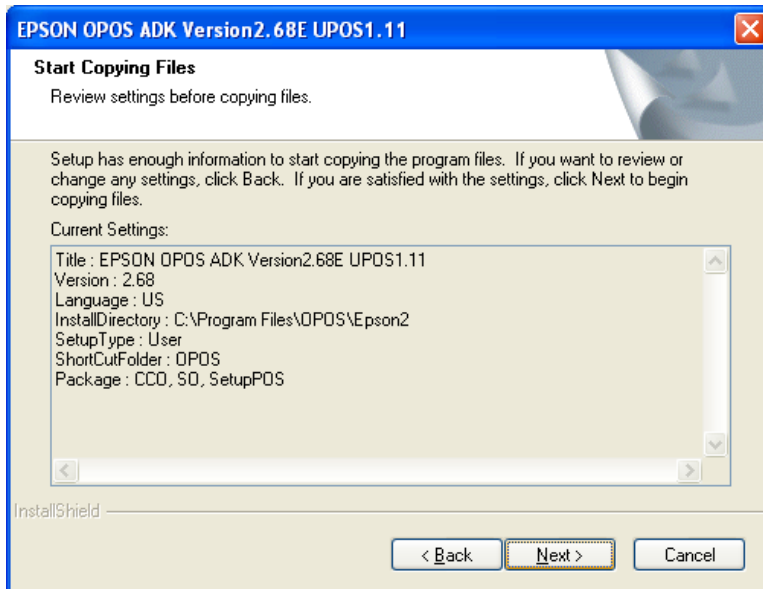


The Select Registry File screen displays.

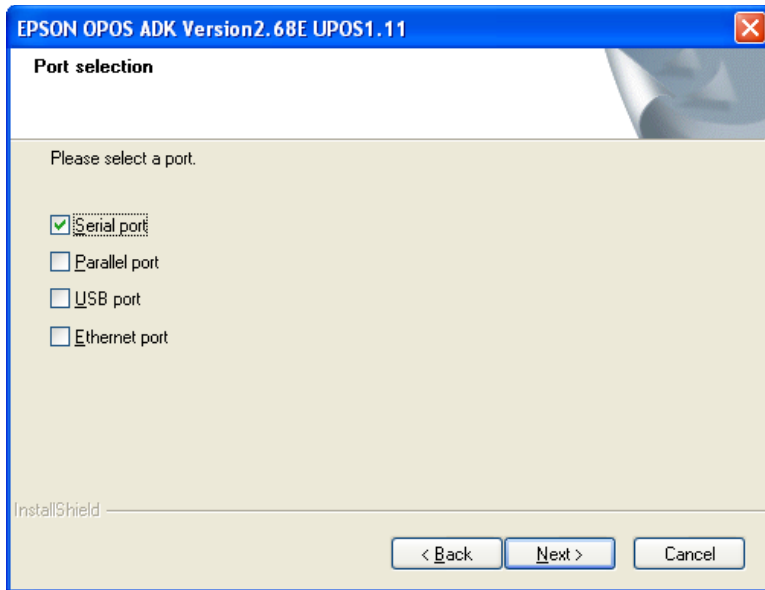
9. Select the first radio button “No registry file” and click **Next**.



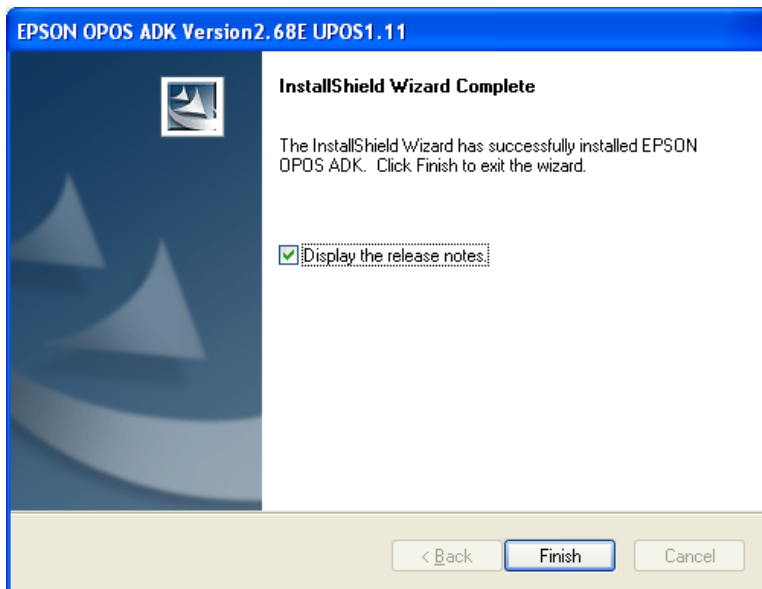
The Setup Type Screen displays.
10. Select **USER** and click **Next**.



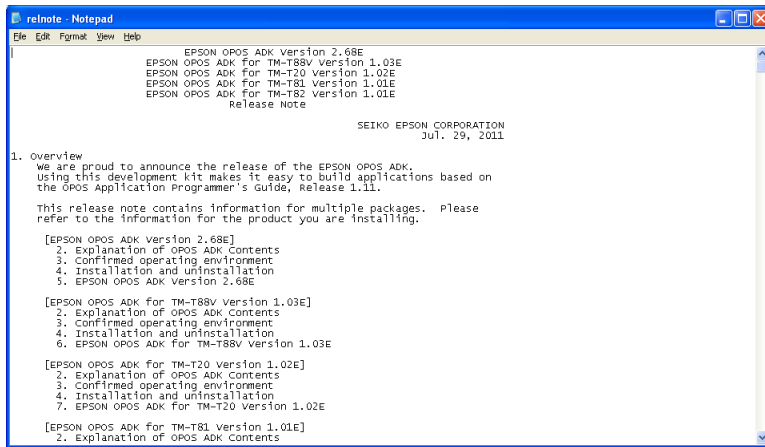
The Start Copying Files screen displays.
11. Click **Next**.



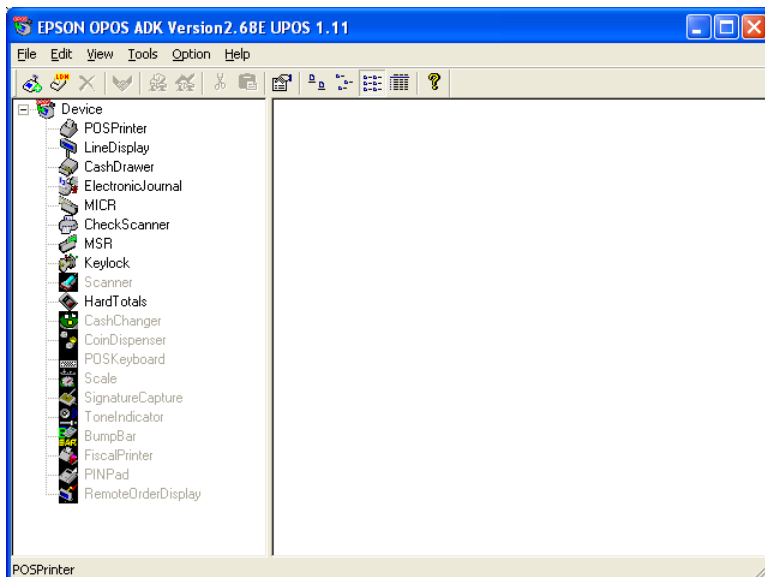
The Port selection screen displays. Select Serial or USB port.
12. Click **Next**



The InstallShield Wizard Complete screen displays.
13. Click **Finish**.



14. Close the Relnote windows.



The OPOS Device Screen appears.

15. Click the + Device to open the device list.

16. Right-click **POSPrinter** and select “Add new device.”

The Add New Device Screen appears.

17. Select the device name **TM-H2000** and enter the name of “**DefaultPrinter**” (no spaces) in the Add New LDN field at the bottom of the screen.

18. Click **Next**.

The Communication Settings Screen appears.

19. Configure your printer's port setting by clicking on MAKE PORT.

The TMPort Making Screen appears

20. Under PORT TYPE, select COM or USB

If selecting COM, under PHYSICAL PORT, select appropriate PORT #.

If selecting USB, under CONNECT DEVICE, select POSPrinter\TM-H2000

21. Click **OK**.

Setup of Details of the Port displays

22. If COM setting is used make sure settings match settings of printer.

23. You can select **CHECK HEALTH INTERACTIVE** to test communication to the printer.

24. Click **Finish**.

When finished the OPOS Device Screen appears.

25. Right-click **MICR** and select “Add new device.”

The Add New Device Screen appears.

26. Select the device name **TM-H2000** for your Epson MICR and enter the name of “**DefaultMICR**” (no spaces) in the Add New LDN field at the bottom of the screen.

27. Click **Next**.

The Communication Settings Screen appears.

The TMPort Settings should show TMPort1 (COM X) or TMPort1 (USB).

Setup of Details of the Port displays

28. If COM setting is used make sure settings match settings of printer.

29. You can select **CHECK HEALTH INTERACTIVE** to test communication to the printer

30. Click **Finish**.

31. Click **OK**, if a window displays “The contradictory warning of a setup of registry” message.

When finished the OPOS Device Screen appears.

32. Right-click **CashDrawer** and select “Add new device”.

The Add New Device Screen appears.

33. Select the device name (**Multi_A**) for your Cash Drawer and enter the name of “**DefaultDrawer**” in the Add New LDN field at the bottom of the screen.

Note: If using a USB Printer, Select **Multi_AU** in the Select detailed Model field at the top right of the screen. The USED PORT should display as USB.

34. Click **Next**.

The Select Connection Type displays

35. Select POSPrinter\TM-H2000 from drop down list.
36. Click **OK**.
37. If COM setting is used make sure baud rate setting matches baud rate setting of printer.
38. Click on **DEVICE SPECIFIC SETTINGS**.
39. Under **OPEN STATUS PHASE,** click on **“HIGH.”**
40. Click **OK**.
41. You can select **CHECK HEALTH INTERACTIVE** to test communication to the printer.
42. Click **Finish**.
43. Click **OK**, if a window displays “The contradictory warning of a setup of registry” message.

When finished the OPOS Device Screen appears.

44. Close the Epson OPOS Window.