



**Subject: New TeamPoS 2000 “M” Digital Video Chip**

**Update A:** Updated to show new BIOS is NOT Downward compatible. Changes are highlighted.

**Update B:** Information added to show specific instructions related to loading the driver on a U-Scan system.

**Overview**

There has been a discontinuation of the Digital Video Transmitter Chip in the TeamPoS 2000 “M” motherboard which necessitates the replacement with a new chip that cannot use the same video driver or BIOS as the original chip. The result is the new updated motherboard may require a driver update when used as a replacement the current motherboards.

**Problem**

The original board (90000759 or 90000759K) can no longer be built with the same Digital Video Transmitter Chip. When a board with the new chip is installed in place of the current board/chip, the display will not function if it is connected to a DVI (D15) or DFP (D12) interface. If the terminal is using the analog VGA interface, the display will still operate properly with the new board installed without upgrading the driver. The ‘new’ driver is version 4.0 and has been available from the supplier since 2005. Some customers already have this updated driver built into their software images. The BIOS is also updated to accommodate the new chip, however the BIOS is not downward compatible with the old board.

Fujitsu Motherboard Revision:	USI Motherboard Revision:
Current: 0016AJ	Current: 1.05
New: 0018AN	New: 1.06

BIOS Compatibility

	Version	Old (Current) Board	New Board
Current	1ambc038	OK	NO
New	1ambd044	NO	OK

Driver Compatibility

	Version	Old (Current) Board		New Board	
		Digital	VGA	Digital	VGA
Current	3.4	OK	OK	NO	OK
New	4.0	OK	OK	OK	OK

**Solution**

When replacing an older “M” motherboard with a new “M” motherboard, the old graphic driver needs to be removed and a new driver installed in its place. The new graphic driver is downward compatible with the old 9000759 board, but the new board cannot run on the old graphic driver. The procedure for upgrading the graphics driver is as follows:

The BIOS and Drivers can be downloaded from the FTP site. The BIOS zip file also contains an installation utility and instructions.

Site: <ftp://ftp.ftxs.fujitsu.com>  
 BIOS Path: pos/possustaining/retail/TeamPoS2000/BIOS/Pentium\_M/BIOS\_044.zip  
 Driver Path: pos/possustaining/retail/TeamPoS2000/Drivers/Pentium\_M/Win2K\_XP\_Drivers/Video/xxx  
 Where xxx is dependant upon your Display configuration.

<u>INQUIRIES TO:</u>		DATE
Fujitsu Transaction Solutions Inc.		
Exchange: Sustaining Engineering	Sustaining Engineering	
Mail: Fujitsu USA04, Sustaining Engineering		
FAX: 858-731-4781 (7888-4781)	Product Manager	
Internet: <a href="mailto:SustainingEngineering@ftxs.fujitsu.com">SustainingEngineering@ftxs.fujitsu.com</a>		
FTP: <a href="ftp://ftp.ftxs.fujitsu.com/">ftp://ftp.ftxs.fujitsu.com/</a>	Author	
Original signature copies maintained by Sustaining Engineering.		

## Driver Upgrade Procedure

- Remove the old board and install the new board
- Power up the terminal in safe mode (Hit **F8** during **POST**)
- Unload the old graphic drivers:
  - Go into the **Control Panel** and click on **system/hardware/device manager/display adapters**
  - There should be two entries for the driver
  - Right click on the first one and uninstall, but do not restart yet
  - Right click on the second one and uninstalled
  - Restart the terminal normally and click cancel when the “**Found new hardware**” window shows up
- Execute the “**setup**” program located in the new graphics driver pack for the correct configuration of the system (ex. DVI Primary, Analog Secondary). The set up program can be found in the “utility” folder.
- Click “**next**” when the driver setup window comes up
- Click “**I agree**” to the software agreement
- A warning screen indicating that the driver has not passed the compatibility test will come up twice. Click on “**continue anyway**” both times.
- Do a restart
- Go back into the **Device Manager** and verify the new driver has been installed.
  - Right click on one of the drivers shown in the display adapters
  - Click on “**Properties**”
  - Click on Driver
  - The new driver version should now be **4.0.0.642**

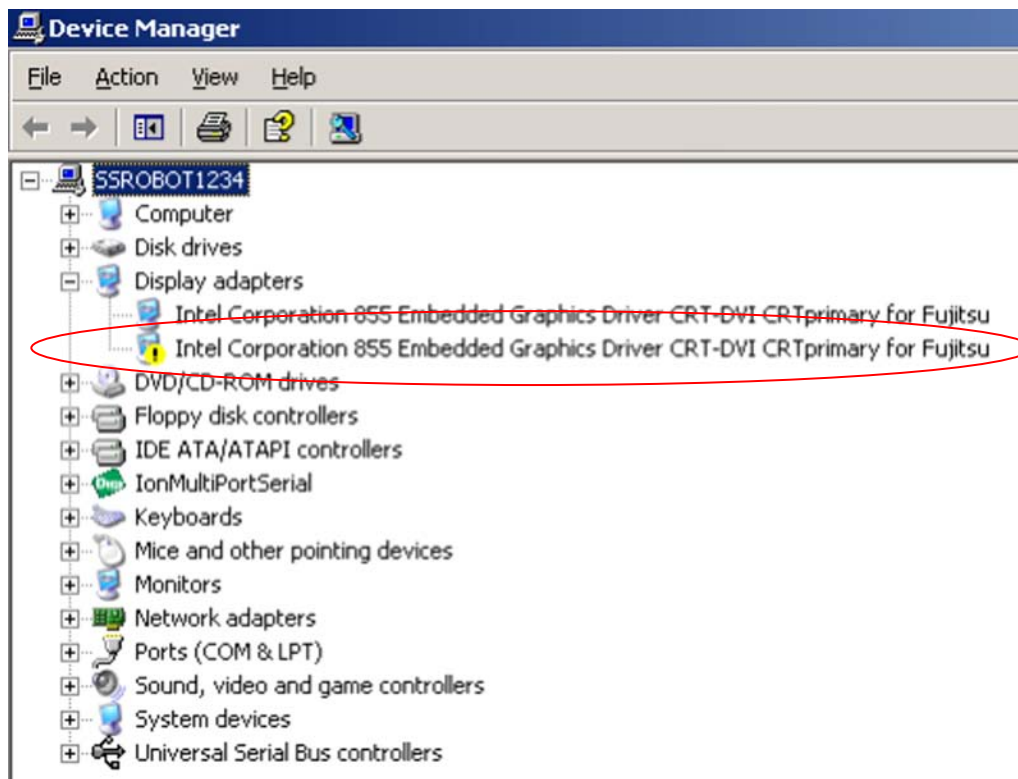
## U-Scan TP2K Video Driver Update

When installing a TP2K PC that contains the new video chip you will need to make sure the Robot System has the correct video driver installed. The Attendant/Cashier Station does not use the second video DVI port so there is no issue with video driver compatibility.

To determine if you have the have an issue with the video driver installed on the Robot System you can check for an error with the “Display adapters” under Device Manager.

### Checking Display Adaptors

1. From the start menu select “Control Panel”
2. From the Control Panel select the “System” icon
3. From the Systems Properties Pop-Up select the “Hardware” tab
4. On Hardware tab select “Device Manager” to bring up the following screen



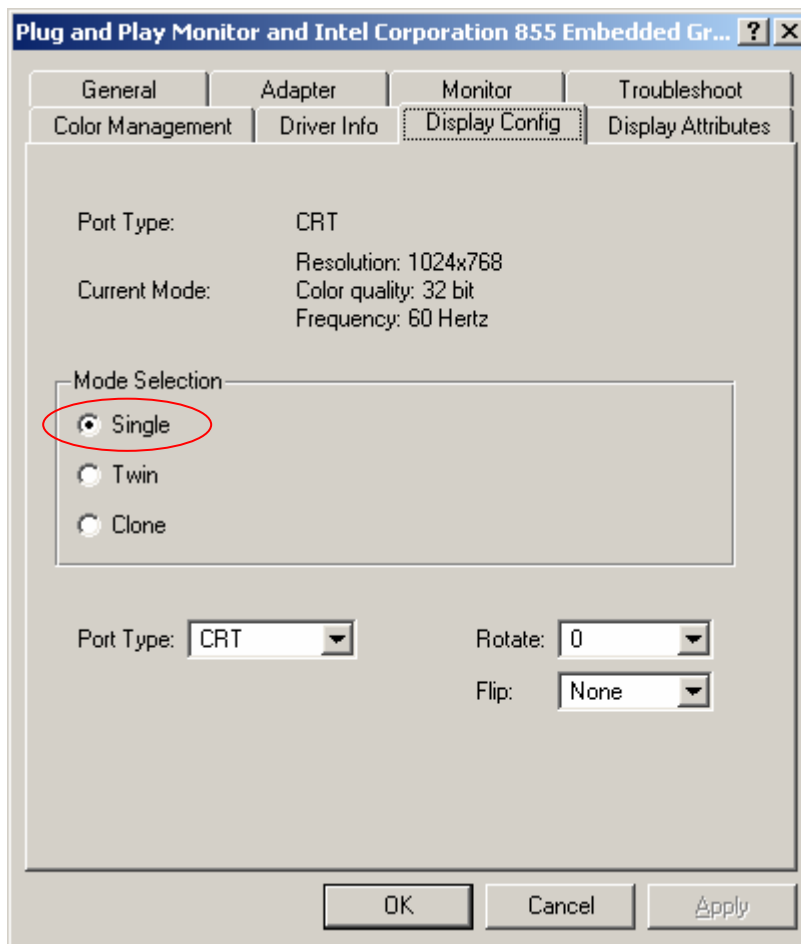
5. On this screen check “Display adapters” to check for an error
6. If an error exists you will need to load the new video driver

## Loading New TP2K Video Driver

After installing the driver using the standard TP2K driver install instructions the following additional steps need to be done on U-Scan Robot Systems to complete the installation of the new TP2K video driver.

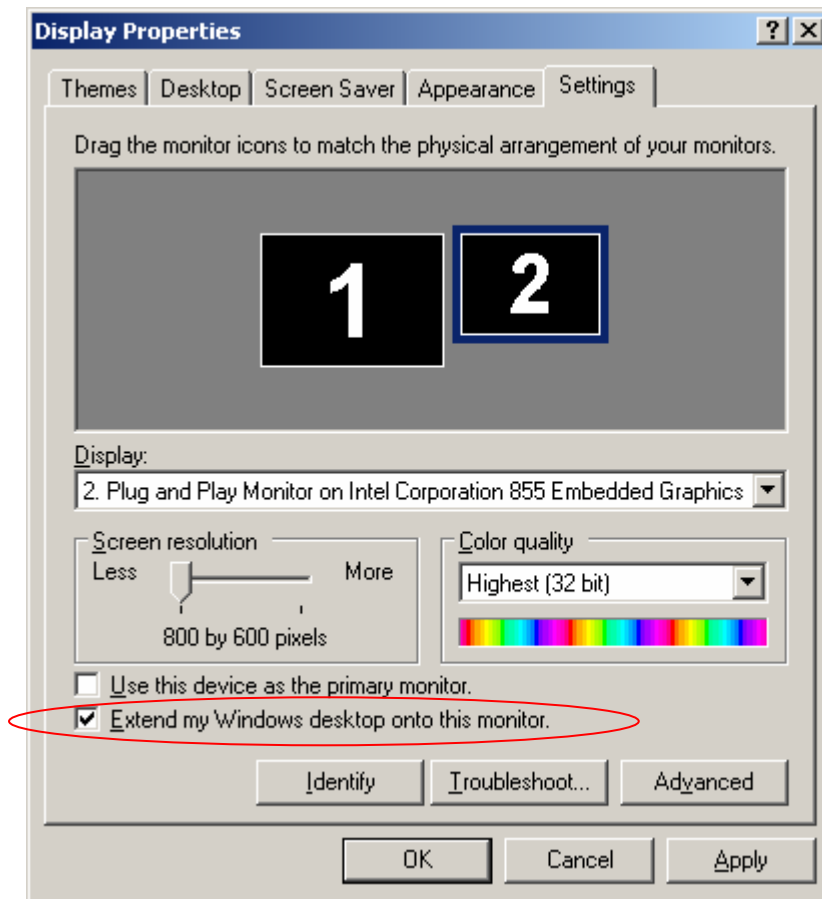
### U-Scan Additional Steps

1. From the start menu select “Control Panel”
2. From the Control Panel select the “Display” icon
3. From the Display Properties Pop-Up select the “Settings” tab
4. On Settings tab select “Advanced” to bring up the following screen



5. On this screen set the Mode Selection to Single (by default it is set to Clone)
6. Press “OK” to Accept

7. After selecting OK the following Display Properties screen will be displayed



8. On the Display Properties screen select screen box 2  
9. With screen box 2 selected select “Extend my Windows desktop onto this monitor”