



Subject: Digi ClassicBoard 8 Driver Fix for FIFO/Drain UART Settings

Update A: Clarification that CashCode device needs FIFO Enabled.

Overview

There have been issues in with the FIFO and Drain UART settings for the Digi Classic Board being improperly set. Below are the instructions to for the correct settings.

Problem

Serial devices connected to Digi Classic Board 8 not responding, or showing communication errors.

Solution

Digi Driver Fix for FIFO/Drain UART Settings

- 1) Right click on "My Computer" and select "Properties"
- 2) Click the "Hardware" tab and click "Device Manager"
- 3) Expand the "Multi-port serial adapters" category
- 4) Double-click on the "Digi ClassicBoard 8" device
- 5) Click on the "Driver" tab and then click on "Uninstall"
- 6) Locate DGAXCLN.CMD in the Digi driver folder and double-click on it:
 CIARWE01/CIARXP01 – C:\Storage\Drivers\Multiport Board\Digi\v6.2.9.0
 TP2KWE01 – C:\Storage\Drivers\Digi Drivers v6.2.9.0
 TP2KXP01 – C:\Drivers\Uscan\Digi v6.29

REBOOT

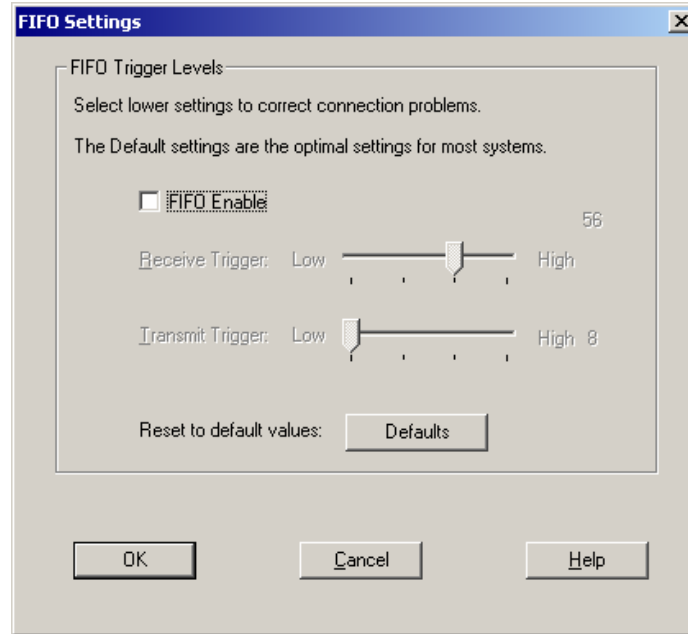
The Digi board will be redetected by Windows and you will be prompted for a driver location. Once Windows has finished detecting the device/ports:

- 7) Follow steps 1 through 4 and then click "Advanced"
- 8) Verify that Port1 though Port8 correspond to COM3 through COM10
- 9) For each port, you will need to do the following:
 - a) Click on "FIFO Settings" and de-select "FIFO Enable", then click "OK"
Except for the port that has the Cashcode device connected to it (COM10), on this port FIFO must be enabled.
 - b) At the bottom, under "Advanced Settings", Select "Drain UART before Completing Write Requests"

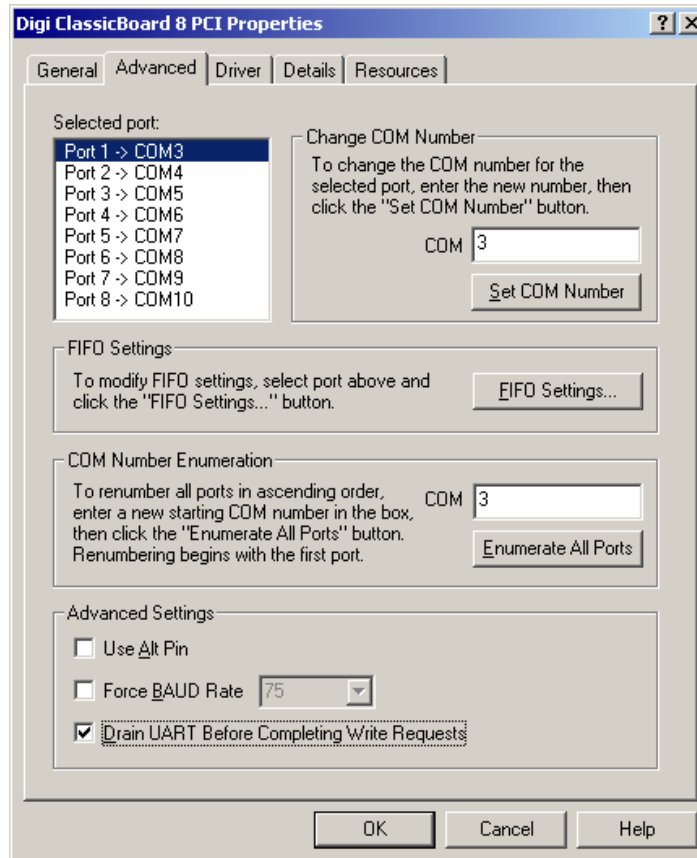
See the two screen shots below:

<u>INQUIRIES TO:</u>		DATE
Fujitsu Transaction Solutions Inc.		
Exchange:	Sustaining Engineering	_____
Mail:	Fujitsu USA04, Sustaining Engineering	_____
FAX:	858-731-4781 (7888-4781)	_____
Internet:	sustainingengineering@ftxs.fujitsu.com	_____
FTP:	ftp://ftp.ftxs.fujitsu.com/	_____
Original signature copies maintained by Sustaining Engineering.		

FIFO Disabled



Drain UART Enabled



Once this has been done for all ports, reboot the PC.