

Subject: U-Scan LT - F53 Bills Spill Over

Update A: Added D1 orderable kit part number.

Overview

Following the upgrade of a U-Scan LT unit from the G&D Bill Dispenser to use the F53 (reference PSB-06-U006A), an issue arose that allowed some bills to spill over the front edge of the existing bill tray and land on the scale or store floor.

Solution

The kit below has been developed and released to eliminate the Bill Spill over problem.

This kit contains parts for modification to 2 robots.

Part Numbers

90001578 - Kit, U-Scan, F53 Bill Dispenser 1 Kit per 2 Robots
KIT90001578 - D1 Kit part number

This kit contains the following parts:

		
<p>90001576 Neo Rubber 'P' Strip 1 per Robot</p>	<p>11002058 Loctite 410 1 per 2 Robots</p>	<p>90001577 Neo Bumper Stem 2 per Robot</p>

** Parts are illustrated in Black for clarity. Actual parts will be colored matched to U-Scan**

<u>INQUIRIES TO:</u>		DATE
Fujitsu Transaction Solutions Inc.		
Exchange:	Sustaining Engineering	_____
Mail:	Fujitsu USA04, Sustaining Engineering	_____
FAX:	858-731-4781 (7888-4781)	_____
Internet:	sustainingengineering@ftxs.fujitsu.com	_____
FTP:	ftp://ftp.ftxs.fujitsu.com/	_____
Original signature copies maintained by Sustaining Engineering.		

Installation Instructions

Warning *** We strongly recommend using gloves. Please read back of adhesive bottle for instructions.**

1. Clean the bottom surface of the exit money chute with a clean rag and Alcohol wipe.



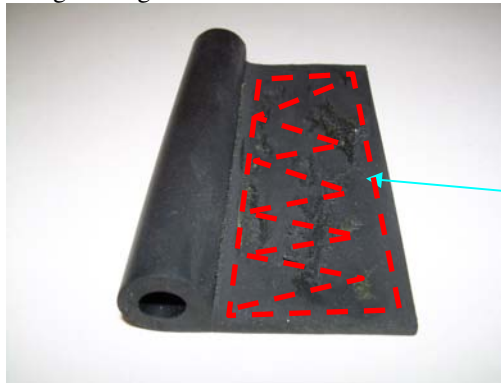
Clean Bottom

2. Apply a very small amount of adhesive to inner top part of the rubber piece intrusion. Push End Caps all the way in, make sure to quickly wipe off any excess glue that got squeezed out if any (do not use fingers to clean). Hold in casing for at least 2 minutes for each side for optimum results. See Picture below:



Adhesive Here

3. Apply a small amount of adhesive making a thin layer covering red dotted area, see picture below. Leave 1/8" of an inch gap along the edges.



Adhesive Here

3. Apply the rubber piece to the bottom right side of the bill exit chute. See illustration below: Apply pressure for about 20-30 Seconds. Adhesive cure time should be around 30 to 60 minutes minimum.



Attach to Right Side

4. Done.