

Update Bulletin

PocketOffice™ for ISS45 and ScanMaster

MB-PO-1192 Issue 7
March 5, 2013

Note: this Issue 7 withdraws the iPad PocketOffice configurations, which have been discontinued. Changes of significance are noted in red.

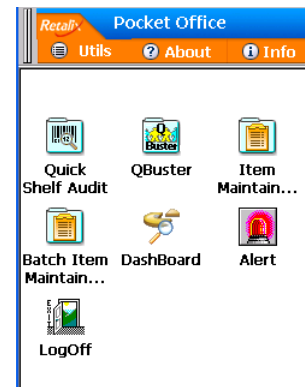
Retalix is pleased to offer PocketOffice for ISS45 and ScanMaster. This is an outstanding suite of hand-held applications designed to increase shopper service while driving cost out of the grocer's business by providing new and more efficient ways of performing in-store tasks. As you will see, PocketOffice provides the very best hardware and software available, but is very aggressively priced – every ISS45 and ScanMaster store can benefit from Pocket Office, and Retalix wants every store to have it.

PocketOffice is offered as stand-alone software that has been configured to run on Fujitsu iPad, PSC Falcon 4400 and X3, and some Symbol MC3000 units. PocketOffice is non-dedicated – additional applications (for example, RBO, S4, Connected DSD etc.) will run on the same hardware, further cutting cost.

Compatibility is further enhanced with its seamless integration with both ISS45 and RBO simultaneously. And the pricing on an RBO/PocketOffice combination makes for arguably the best value in PoS.

PocketOffice's "Release One" had appropriate targets: tackling the number one shopper complaint, then supplying the number one use for mobile computing in a store. It's hard to beat that. So the first release contained two applications that every store needs to operate effectively, plus Q-Buster™ a new application designed to help grocers provide extraordinary customer service during the heaviest business periods.

Then Retalix kept its promise to release a stream of additional PocketOffice application modules with Release Two, adding Grocery Dashboard™ and Remote Cashier Monitoring. These new capabilities were the first of their kind in the entire retail business, and raised the bar on how mobile computing could be put to truly productive use in a store environment. GroceryDashboard puts all the critical customer service and sales information right in the manager's hand, while PocketOffice Remote Cashier Monitoring provides the best front-end security ever implemented in a grocery environment.



Release Three put a pair of outstanding new applications out there for PocketOffice users. With Remote Manager Authorization, store management staff can approve HALOs and other ISS45 control checks from any where in the store, with full drill-down and date at their fingertips. And with the Roving Master (chargeable option) a PocketOffice/iPAD unit can go to any store throughout the chain, with no practical limit on the number of PocketOffices there can be in any store at any one time. There's no increased application charge for Release Two or Release Three – any PocketOffice user can get the upgrade for Remote Manager Authorization at no charge. Release Three also adds Audit Logs for the Quick Shelf Audit and Item Maintenance

(immediate) modules. See chart on Page 12 below for release compatibility or visit the [PocketOffice Compatibility Matrix](#) on the Retailix Dealer Support Web site.

Principal Pocket Office sales messages include:

- **Operating Cost Reductions** – PocketOffice gives grocers better ways to do old things, saving time and money and creating flexibility – all with a low-cost package that delivers much better value than anything else out there. Besides, PocketOffice is the best system ever for ensuring accuracy in the store, and accuracy is a sure money and time-saver – not to mention building shopper confidence. “Do it once – do it right.”
- **Shopper attraction and retention** – is the name of the game, and what better way to infuse shopper loyalty than for your shoppers to know that the store will whisk them through the lines and out the door even on the busiest days of the year? Not only can Q-Buster turbo-charge the front end, but with PocketOffice GroceryDashboard managers can instantly see the shopper service status at a glance from anywhere in the store.
- **Remote Manager Authorization** – finally, a tool that lets independent grocers add security without damaging shopper service levels! Remote Manager Authorization cuts all that waiting time out of the front end: managers don’t need to make their way to the front just to authorize a transaction. Less waiting = better shopper service.
- **Remote Cashier Monitoring** – most grocers know that their front-end shrink exceeds their profit margins! But now store managers can keep their cashiers from giving themselves unilateral raises with PocketOffice’s Remote Cashier Monitoring. The first such application of its type, managers can see everything going through the register in real time while observing the cashier right there at the front end.
- **GroceryDashboard™** – a “killer app” if there ever was one. With one glance, managers can see exactly what their customer service looks like at the front end, plus see everything that’s going on with today’s sales. There last thing with this kind of management sizzle was 20 years ago with the first RF Shelf Audit. And no other POS or third-party app can do anything like this.
- **Shelf Audit** – research shows more than 75% of all mobile usage in grocery stores is for simple shelf audit. And no wonder – it’s may be the store’s single most important item management function. *Every* store needs shelf audit, so make it PocketOffice (and get everything else PocketOffice gives you to boot). PocketOffice’s shelf audit is designed specifically to strip away all the non-productive app-clutter so the shelf prices can get be verified against the PLU file as fast as possible. Pocket Office finds price discrepancies fast, and fixes them in real-time.
- **Item Management** – PocketOffice’s Item Maintenance is actually two products in one. First, it’s a full-blown, online item maintenance application that makes file changes directly into ISS45 with anywhere, anytime convenience. But it can also perform in a batch mode, automatically creating and formatting item batches that employ all of the ISS45 or ScanMaster batch-handling, processing and tracking capabilities.
- **Roving Master** – This option lets the PocketOffice unit work in any store in the chain. Headquarters staffers can simply walk into a store, log in and instantly become part of the in-store PocketOffice network to check sales, service levels and so forth. Roving Master is also perfect for “hit teams” to validate entire stores overnight, allowing a large number of PocketOffice iPADS to work simultaneously.
- **Q-Buster** – here’s how to boost shopper service when it counts the most. When shoppers exceed the store’s capacity, like on July 3 and December 24, lines start to get crowded, would-be shoppers do a U-turn at the front door and time-pressed shoppers get irritated. With PocketOffice’s Q-Buster, even non-checkout trained personnel can easily scan the shopper’s order, helping them get out the door in a hurry. Shoppers will be impressed and grateful for the way you handle the busiest times.



- **Datalogic Falcons** – some of the greatest hand-held computers ever developed. Choose the PSC Falcon X3 for its true alphanumeric keyboard, toughness and great track record – the perfect platform for PocketOffice.¹
- **Easy!** – Very simple to learn and operate, store staff will be up and running in no time.
- **Pricing** – all this and more to come, at a price that competes convincingly with simple products on clunky old hardware. Combining with RBO? Even cheaper!

ARCHITECTURE OVERVIEW

PocketOffice is a combination of the ISS45 or ScanMaster application and a remote “thick client.”

Applications built into the POS supply and store the data for PocketOffice using high-speed 802.11 RF communications plus the hand-held’s architecture to guarantee quick response and superb performance.

With PocketOffice, applications actually operate locally in the iPad or Falcon over Windows CE .NET to eliminate response delays. Data communications are hot-linked directly into ScanMaster or ISS45, but actual transfer is kept to a minimum to maximize performance.

REMOTE MANAGER AUTHORIZATION

New with Release Three, Remote Manager Authorization lets store managers authorize front-end events from their PocketOffice iPad anywhere in the store. PoS alerts, control checks and supervisor overrides can all be handled with a quick click without the time-consuming walk up to the PoS counters.

Management staff will get a quick view of the data right on their hand-held, and can choose to authorize the event immediately or can still proceed to the front end to handle it manually. Using PocketOffice’s communications features, they can also send a message to the clerk.

The PocketOffice software continually looks for events generated by the POS that PocketOffice can handle via Remote Manager Authorization. In general, there are two kinds of alerts:

- **Info Only** events allow the front end to resolve the issue, and these can be set to “IGNORE” it (the event will no longer display for this user). Info events let the manager keep a close eye on specific types of transactions and events without requiring action.
- **Approvable** events provide the user the additional ability to approve the event from the hand-held.

Remote Manager Authorization users can simply tap the PocketOffice screen for more information. For example, “Item” data provides the description of the current item the cashier is working with, whereas “Ticket” gives the user transaction ticket summary information. A “Restrictions” tab defines exactly what kind of restriction triggered the event.

Remote Manager Authorization is a true multi-user application, designed for simultaneous use by several staffers.

Control Check #1	
Ticket Over Lmt	
Approvable	
TICKET	
Order Type	SALE
Ticket Total	313.59
Balance Due	313.59
# of Items	34
Total Disc	16.00
# of Coupon	2
POS 22	David 16:18
Exit	POS Appr. Ignore

¹ PocketOffice with ScanMaster supports the current Falcon X3. The ISS45 version is completing development and test, and is expected shortly at this writing.

Parameters control which store personnel are authorized to participate, and Remote Manager Authorization can easily be turned off by an authorized user when convenient. In addition, grocers control exactly which types of transactions can be handled (and how to handle them) using PocketOffice – in fact, every ISS45 control check can now² be set to allow information, approval or disallow handling from Remote Manager Authorization.

ITEM MAINTENANCE

PocketOffice’s Item Maintenance is the complete tool that grocers need to manage scan files – and it’s actually two products in one.

First, it’s a full-blown, online item maintenance application that makes file changes directly into ISS45 or ScanMaster. But it also performs in a batch mode, automatically creating and formatting item batches that use all of POS’ batch handling, processing and tracking capabilities. Either way, a quick scan with the hand-held’s built-in reader brings the item right to the palm of your hand with all the necessary information instantly available to read or modify.

But item management can take several forms

involving different kinds of tasks. And these different tasks need different information. But we all know how crowding too much on the screen impairs productivity just as much as forgetting important data.

Field #	Name	Type	R/W	Pre	Default	Source	Rqrd
50	PriceReasonID	ComboBox	Read/Write	<input type="checkbox"/>	Regular Inceas	PLU File	<input type="checkbox"/>
51	PriceVerify	CheckBox	Read/Write	<input type="checkbox"/>		PLU File	<input type="checkbox"/>
52	PromotionID	EditBox	Read/Write	<input type="checkbox"/>		PLU File	<input type="checkbox"/>
53	QtyAllowed	CheckBox	Read/Write	<input type="checkbox"/>		PLU File	<input type="checkbox"/>
54	ReceiptDescription	EditBox	Read/Write	<input type="checkbox"/>		PLU File	<input type="checkbox"/>
55	RestrictionLayout	EditBox	Read/Write	<input type="checkbox"/>		PLU File	<input type="checkbox"/>
56	RetailPrice	EditBox	Read/Write	<input type="checkbox"/>		PLU File	<input checked="" type="checkbox"/>
57	ReturnCode	EditBox	Read/Write	<input type="checkbox"/>		PLU File	<input type="checkbox"/>
58	SaleAuth	CheckBox	Read/Write	<input type="checkbox"/>		PLU File	<input type="checkbox"/>
59	SaleRestrict	EditBox	Read/Write	<input type="checkbox"/>		PLU File	<input type="checkbox"/>
60	ScaleFl	CheckBox	Read/Write	<input type="checkbox"/>		PLU File	<input type="checkbox"/>
61	SecondFamily	EditBox	Read/Write	<input type="checkbox"/>		PLU File	<input type="checkbox"/>
62	ShellLabelsRequired	CheckBox	Read/Write	<input type="checkbox"/>		PLU File	<input type="checkbox"/>
63	ShellLifeDay	EditBox	Read/Write	<input type="checkbox"/>		PLU File	<input type="checkbox"/>
64	SkipAudit	CheckBox	Read/Write	<input type="checkbox"/>		PLU File	<input type="checkbox"/>
65	SspProduct	CheckBox	Read/Write	<input type="checkbox"/>		PLU File	<input type="checkbox"/>
66	StoreCoupon	CheckBox	Read/Write	<input type="checkbox"/>		PLU File	<input type="checkbox"/>
67	SubDepartmentID	ComboBox	Read/Write	<input checked="" type="checkbox"/>	Chips	None	<input type="checkbox"/>

So PocketOffice is almost infinitely flexible with how it brings users the data and lets them choose the fields to see and edit. Users can set up task “profiles,” each containing a user-defined selection of item fields or attributes and the preferred maintenance order. Users decide which fields should be for display-only, which ones should be editable, which required etc. Then, they simply drag and drop the fields into the screen position to set up and save the profile. This makes for extremely efficient operations, since every task has its own optimal application setup.

Another major time-saver is PocketOffice’s Item Maintenance “Preset Mode.” Using presets, a store can set up whole groups, departments or manufacturer’s items using whatever set of defaults the user needs at the moment. Then just an item scan will attach those defaults.

Q-BUSTER

Shoppers waiting in line to check out... Standing there seems like an eternity. There’s nothing to do but let your mind wander, and if you’re there for too long, you might even think of wandering to another store in the future.

Long lines just don’t fit the program when shoppers are ready to check out. That’s why waiting for checkout is still the number-one shopper complaint. And during peak hours it’s even worse: even if you’ve got express lanes, when these lines are six-deep, the shoppers still aren’t

² As of ISS45 releases 8081 and 7091.



going anywhere fast. So how can you turbo-charge your peak-period throughput without installing more lanes?

For the very first time, there's an answer. With Q-Buster™ you can break a shopper out of the checkout line by using PocketOffice to pre-scan their items. Then the shoppers finish up by paying at a standard PoS or special tender station. Q-Buster can handle everything in the basket that scans, leaving just the weighed items and coupons to zip through tendering.

A critical factor is that clerks don't need PoS application training or cashier skills to run Q-Buster – the shelf stocking crew will already be accustomed to scanning with PocketOffice, so when the rush hits grocers can bring up reinforcements in a hurry.

Q-Buster Details: The architecture of Q-Buster was designed to match the actual store situation in overload mode. This is when “busting” the line and pre-scanning the items serves three purposes:

- Shoppers immediately know that you're paying attention to their needs and the perception of shopper service is instantly improved.
- Shoppers are involved in the pre-scan transaction and then quickly move through tender. The actual shopper time savings are multiplied by the shopper perception of action, movement and efficiency.
- The regular checkout clerks will all be at their stations – here's where you need to put non-checkout staff to work to leverage the checkout-trained staff. The flexibility of staffing here for the traffic spikes in the busiest periods can save scheduling and cost headaches.



One of the most efficient models for Q-Busting is for the store to set up special grocery carts with bags – and sealing tape for security if desired. Express lane Q-Busting is particularly effective since there is a minimum of items to handle without the standard advantages of a check-lane and belt. Here's how the transaction would flow:

- Clerk approaches shopper in the line and asks if the shopper would like immediate checkout. Who's going to say no to this?
- The clerk scans/swipes either a shopper's loyalty card (if in use) or produces special Q-Buster card. PocketOffice can use any standard format with at least 8 digits.
- The clerk scans the shopper's groceries and transfers them from the shopper's basket to the shopping bag. Any items that need to be weighed are held aside.
- As the items are scanned, the Q-Buster application is creating a list file of the UPCs and quantities in the ISS45 office, tied to the card. This is not the same as a Suspend/Recall file – ISS45 makes no attempt to handle promotions, coupons or any other special details at this point. Just a list is created. PocketOffice does not attempt to mimic a full PoS application as would be found at the registers.
- The shopper then takes their bagged merchandise and proceeds to the tender station. Stores can set up special tender stations or dedicate a lane as required.
- At the tender station, the clerk scans or swipes the card, which instantly brings the list up to PoS and electronically runs it through the transaction system, applying all normal promotions etc. Think of it as “instant scanning” using ISS45's extreme performance to complete the order almost instantaneously. Any weighed items can be handled quickly.
- The clerk then tenders the order and accepts any coupons required. The clerk never has to touch the merchandise – it's already bagged – and the tender portion of the transaction proceeds very quickly.

- Through the entire process, the shopper is *always engaged*. This is a key to the process, since time will pass much faster and the actual time savings will seem like much more.

SHELF AUDIT

PocketOffice's Shelf Audit is designed to be a super-fast, right-to-the-point price change capability for in-aisle operations.



It *wasn't* designed to be one of those all-singing, all-dancing hand-held applications where it takes two function keys, sixteen keystrokes and a belt-mounted battery pack just to get onto the next item. Instead, Pocket Office's Shelf Audit module was designed to do one thing, and do it perfectly: verify that the shelf prices match the PoS scan file – right now.

Price integrity is critical to shopper confidence and loyalty, which is a lot of the reason the shelf audit function is far and away the number-one use for mobile computers in supermarkets today. PocketOffice's Shelf Audit will find price discrepancies fast, and fix them in real-time. With its dedicated interface to ScanMaster or ISS45, Shelf Audit can instantly change the PoS price to match the shelf tag over

PocketOffice's RF Ethernet connections.

Look: everyone needs Shelf Audit, so give them a great one, along with a PocketOffice system that does much, much more besides.

REMOTE CASHIER MONITORING

Here is store front-end security without lifting a finger. Only from PocketOffice.

- Positively the most effective method of monitoring cashiers.
- Managers or head cashiers can watch the real-time receipt text from transactions on PocketOffice's VGA screen the while actually observing the front end
- There is no delay, and clerks will have no idea which if any lanes are being monitored.
- Security without working at it: nearby managers can be performing any of PocketOffice's functions and no one will be the wiser!
- Exclusive – unavailable on any other PoS or remote handheld system.

GROCERYDASHBOARD

PocketOffice's GroceryDashboard is the first product of its type and provides store managers with the key gauges of customer service and daily sales in the palm of their hand. No other POS or RF system has features like this!

- One glance and they can see a graphical representation of what's going on at the entire front end.
- Separate colored icons show which lanes are open and closed.



- GroceryDashboard even magically³ shows how many shoppers are waiting at each lane, so managers can instantly add cashiers when the lines are too long, or send cashiers on break if the number of cashiers signed on is wasting labor. PocketOffice makes it easy from anywhere in the store.
- PocketOffice shows which cashiers are on which lanes of the GroceryDashboard display, and managers can even drill down to see productivity data.
- GroceryDashboard's built-in messaging system enables manager to send notes to all or selected terminals right from their PocketOffice hand-held. You don't even have to type in the messages – to save time, messages are stored and the PocketOffice user needs only to tap on the desired message to select it.
- GroceryDashboard also provides the store's critical flash sales data at-a-glance. Managers can drill down here too, to see whether they are ahead or behind of typical sales for the day and judge whether to lighten or increase rest-of-day labor.

ROVING MASTER

PocketOffice Release Three's Roving Master capability is a special PocketOffice chargeable option that leverages a PocketOffice unit for use *anywhere in the chain*. Local and regional independents can now equip their headquarters staffers with PocketOffice, and the moment they walk into a store and log in, their PocketOffice unit will be able to handle any normal PocketOffice functions in the store.

Not only is Roving Master a powerful management tool throughout an independent's entire operation, but shelf audit teams can use multiple PocketOffice Roving Masters en mass to quickly validate an entire store overnight.

PocketOffice Roving Master is released as a check-box option at installation using the same software load/install as standard PocketOffice. PocketOffice units for which the Roving Master option has been ordered will be provided with a special security code to be input at installation that will enable Roving Master to identify itself as such to the PocketOffice in-store application and be authenticated via normal means in the store. The Roving Master option is available *only* on PocketOffice first-unit packages – this option is not available on secondary unit licenses.

ABOUT IPAD — WITHDRAWN ⁴

The combination of PocketOffice's software and iPad may be the right package for your use. iPad is an advanced hand-held computer with particular advantages to PocketOffice users. Small, lightweight, powerful and cost-effective, iPad:

- Weighs just 11 ounces
- Powerful built-in laser scanner now with RSS-14⁵ – anyone who's ever suffered with a low-end scanner for shelf audit knows how slow and frustrating the process can become. iPad's first-rate laser reads all the tough labels fast,



³ Well, it's not really magic. It uses ISS45's exclusive Queue Length Control feature, where cashiers are prompted to press the numeric key indicating the number of shoppers in line prior to starting each new order. ScanMaster compatibility with this capability to be announced.

⁴ See Marketing Bulletin 1212 for information about StoreNext's PSC Falcon offerings.

⁵ As of the -20 iPad version, September 2006.

and even reads through cooler glass when necessary. There's even a nice GUI utility for scanner configuration.

- Built-in Wavelink Avalanche 802.11b/g radio
- Built-in magnetic stripe reader
- Built-in smart-card reader
- Pistol-grip option — iPad slides into a lightweight locking “scan handle” and trigger mechanism for high-productivity scanning. Instant disengagement for standard operation means that the iPad is always available with optimum ergonomics. A new scan handle with a charge-through option enables charging the iPad without removing the scan handle.
- Voice-Over-IP (VOIP) — including microphone, speaker, headset audio interface — can eliminate need for portable pagers, telephones etc. in-store.
- Fully encrypted keypad for RF security
- Use even in brilliant sunlight — bright-color reflective TFT touch-screen with wide-angle viewing. The iPad -20 model (September 2006) provides an improved back-lit LED.
- Use even in the dark — front-lit 320 x 240 (Quarter VGA) and LED-back-lighted keys
- 1850mAh Lithium-ion battery. Specifications call for 7.0 hours with full back-lit screen compared to 2.5 hours with full back-lit screen in previous iPad version. Your battery life will likely be less depending on degree of scanning and radio usage.
- *Five-foot drop capability onto concrete — any angle, any side. Even the screen is included in the standard warranty. (The difference between four-foot and five-foot drops is significant — iPad withstands shocks 60% greater than the competing units.)*
- Microsoft Windows CE .NET platform, running over 520 MHz Intel X-Scale microprocessor (PXA270)
- Any retailer exploring the potential of the Internet for internal reporting (workplace and shopper-related forms and reports) will be amazed by iPad's browser performance — especially if they've ever tried this with a Pocket PC 2002 environment. iPad configures in less than half the time too.
- 128MB SDRAM, 64MB Flash ROM with 64MB user accessible FFS storage
- Bluetooth v1.2 included
- Device compatibility with earlier iPad models — the new iPad -20 is compatible with all previous accessories. New accessories with RoHS compliance are now available.
- CE.NET 5.0 — the iPad -20 (September 2006) supports the newer 5.0 version of CE.NET.



DOCUMENTATION

PocketOffice documentation includes the following. Please check the StoreNext Dealer Support Web site's PocketOffice Manuals Page for possible later versions released after this writing:

Document Title	PIN	Part Number	Price
PocketOffice Installation Manuals — instructions for installing the PocketOffice package, including configuration of the hardware components including the Cisco 350 or 1100 Access Points	45001/068	89000318 89000319	Electronic
PocketOffice User Reference Manual (Release Three) — information and instructions for using the PocketOffice applications for either ScanMaster or ISS45	45001/069	89000320 89000321	Electronic
PocketOffice Release Notes – for the current releases	45001/093	89000311 89000312	Electronic
CD ROM, iPad documentation and utilities — Software Development Kit for developers and Dealers		90000750	Electronic
iPAD Operator's Guide		90000610	Electronic
iPAD System User's Guide		90000608	Electronic
iPAD Quick Reference Guide		90000609	Electronic
iPAD Programmers Reference Guide		90000607	Electronic

All documentation prices are Dealer Net. Discounts are not available, but then again why would you need one, since products marked "electronic" can be downloaded at no charge from the StoreNext Dealer Support Web site.



SALES AIDS AND COLLATERAL

The following sales aids and collateral are available. Starter packs of the brochures were provided to all Dealers in good standing at the original release of PocketOffice. Electronic versions are also available from the StoreNext Dealer Web site at www.StoreNext.com/Dealer. See also the PocketOffice [All-In-One Page](#).

Title	QTY	PIN	Part Number	⁶Price
PocketOffice Brochure/Folder (4 Pages)	25	PO-Brochure	PocketOffice-A	35
PocketOffice Inserts (1 page per insert)	25	PO-Inserts-B	Q-BusterInsert ShelfAuditInsert ItemMtnceInsert GrocDashInsert RemCashMonInsert RemManAuthInsert RovingMasterInsert	25
IPAD Data Sheet	25	IPAD-DS	IPAD-DS	25
PocketOffice Presentation (PowerPoint)	N/A	N/A	N/A	Electronic

All Sales Aids and Collateral are Dealer Net. Discounts are not available.

SOFTWARE MAINTENANCE AND SUPPORT

PocketOffice support is available from the StoreNext Technical Support line at **800-533-0855** to Dealers in good standing under standard StoreNext support terms and conditions. PocketOffice SMS includes software updates and upgrades, updated documentation and collateral as well as technical support. Please note that certain new PocketOffice functions and options may be billable.

See the current version of Policy ESS5 for PocketOffice SMS pricing.

⁶ All prices for Sales Campaign Support materials are net Reseller cost and non-discountable.



PRICING AND CONFIGURATION

PocketOffice is now marketed as a software-only configuration for use with PSC Falcon. Order the same PINs for either ScanMaster or ISS45.

Many users will operate multiple simultaneous units — typical hand-held usage in large stores could involve five or more hand-helds for example. After purchasing the first unit, subsequent units *in the same store* should use the “Additional Unit” PIN below that has a lower software license. ^{7, 8}

Order:

PIN	Item	Price	Inst	Maint
45PO-01S	Pocket Office Software License only, First Unit	\$ 1,495	\$ 100	\$ 100
45PO-02S	Pocket Office Software License only, Second and Subsequent Units Error! Bookmark not defined.	495	100	N/A
45PO-01	Pocket Office Package, License and iPad, First Unit	3,995	100	500
Withdrawn	Includes Pocket Office base applications, iPad and radio (IPAD100-20). Chargers, cradles, extra batteries and wireless infrastructure items not included.			
45PO-02	Pocket Office Package, License and iPad, Additional Unit	2,995	100	100
Withdrawn	Includes Pocket Office base applications, iPad and radio (IPAD100-20). Chargers, cradles, extra batteries and wireless infrastructure items not included.			
45PO-RM	Pocket Office Roving Master Option	995	N/A	N/A
	Applicable as an add-on option for current or earlier first-unit (45PO-01S, 45PO-01, 45PO-01A, 45POR-01 or 45PO-01A) packages only.			
45PO-01A	Pocket Office Complete Package, First Unit	4,995	100	600
Withdrawn	Includes Pocket Office base applications, iPad and radio (IPAD100-20), Cisco 350 802.11b/g Access Point (AIR-AP1131AG-A-K9) and Power Injector (AIR-PWRINJ3). Chargers, cradles and extra batteries not included.			

The Dealer Discount for Pocket Office software and options is 35%. Additional units (45PO-02S) may be purchased only on same order as First Unit (45PO-01S) for the same store and on the same order.

ADDITIONAL ACCESS POINTS

In relatively clear spaces, a single 802.11b access point is capable of covering up to 150 feet in all directions. **Later model access points with improved specifications may provide greater coverage.**

⁷ PocketOffice will not operate without the PocketOffice application enabled on the ISS45 or ScanMaster software key. As with POS terminals, the key enables the number of PocketOffice licenses (not counting Roving Masters) that have been purchased. When PocketOffice is purchased for an existing store, or a Demonstration Package purchased for an existing Dealer demonstration site, a Software Key Information Form (SKIF) must be provided so that the existing software keys can be updated — the Dealer will receive the electronic updated key files from StoreNext.

⁸ The Additional Unit PIN will not be sold without a First Unit on the same sales order. If a store purchases additional units at a later date, the First Unit pricing will apply.



Your mileage may differ – the type and size of shelving and fixtures, ceiling material and height, store shape etc. all affect the actual coverage that will be achieved.

There are some rules to follow when surveying and configuring a store – not to mention a multitude of tips and tricks. Network education and training for 802.11b is beyond the scope of this bulletin, but there are courses and sites (for example www.80211-planet.com) that provide a wealth of information on this topic.

One thing for sure – do *not* mix access points, especially between manufacturers. Handheld roaming in the store will almost certainly fail if the access points aren't the same.

HARDWARE PRICING AND CONFIGURATION

- Pricing and Configuration for Datalogic Mobile Falcon can be found in the current version of [Bulletin 1212](#) available on the StoreNext Dealer Support Web site.
- **The Fujitsu iPad has been withdrawn.** Pricing and Configuration for remaining Fujitsu iPad accessories and consumables is provided starting on Page 14 below.

POCKETOFFICE RBO AND IPAD COMPATIBILITY

PocketOffice (beginning with Release Three) is compatible with combined ISS45/RBO and also ScanMaster/RBO installations. Parameters in PocketOffice RBO are available so that PocketOffice file maintenance (Shelf Audit and Item Management) features work with the RBO file set instead of the ScanMaster/ISS45 native file structure. The other PocketOffice applications – Q-Buster, Remote Manager Authorization, GroceryDashboard and Remote Cashier Monitoring – continue to work directly with ISS45 or ScanMaster.

RBO (starting with release 4.2.1) can run its RF functions on the Fujitsu iPad. So you can use the same iPad purchased with PocketOffice with RBO, saving expense from the former RBO hand-held requirements. iPads with CE.NET 4.1, 4.2 or 5.0 can be used.

RBO/PocketOffice/POS Compatibility is described in the following table (including Dashboard and Remote Cashier Monitoring). See also the StoreNext Dealer Support Web site [PocketOffice Compatibility Matrix Page](#):



PocketOffice Release	POS Version	Minimum POS Release	Minimum RBO Release
Release Three (20.06.10.50)	ScanMaster V2 ⁹	2.03.01-050	4.5.2
Release Three (20.05.30.50)	ScanMaster V2 ¹⁰	2.02.00-050	4.4
Release Three (1.8.0.50)	ISS45 Version 8	8.0.8.1-050	4.3
Release Three (1.8.0.50)	ISS45 Version 7	7.0.9.1-050	4.3.1
Release Two (1.7.3.75)	ISS45 Version 8	8.0.6.0-051	4.3
Release Two (1.7.3.75)	ISS45 Version 7	7.0.8.3-052	4.3.1
Release One (1.7.1.23)	ISS45 Version 8	8.4.2_55	Not compatible
Release One (1.7.1.23)	ISS45 Version 7	7.8.1_50	Not compatible

AVAILABILITY

PocketOffice Release Three is in General Release. PocketOffice software does not physically ship along with the hardware. Current and former releases are available on the StoreNext Dealer Web site – see the [PocketOffice All-In-One Page](#) for links to updated software and all PocketOffice-related information.

Separate PocketOffice topics (brochures, manuals, marketing bulletins etc.) will also be found on the appropriate pages of the [StoreNext Dealer Web site](#).

⁹ Did not include support for Remote Manager Authorization or Q-Buster.

¹⁰ Added support for Remote Manager Authorization or Q-Buster.



Configuration and Pricing

Fujitsu iPad

Fujitsu iPad: Hand-Held Computer

PIN	Description	List Price	Install Price	Maint. Price
IPAD100-20	Fujitsu iPad, includes iPad with ¼ VGA Color Screen, MSR, scanner, battery	\$2,946		\$300

Dealer Net Price: \$1,915. Product Withdrawn

Fujitsu iPad: Fujitsu iPad Accessories

PIN	Description	List Price	Install Price	Maint. Price
11001797	Fujitsu Main Battery (spare) for iPad - Lithium Ion 1850mAh. Replaces all prior iPad batteries and suitable for use in all iPad models (IPAD100-xx). ¶-Replaces withdrawn PIN CA50601-1003	\$84		
				Dealer Net Price: \$55. Price subject to change by manufacturer. Product may be withdrawn or unavailable from vendor — check with Retalix Order Entry prior to ordering.
IPAD142-51	Fujitsu iPad Cradle Kit with AC Adapter, Power Cord and USB Cable Includes Cradle (11001794), AC adapter (CA05306-D530) and power cable (1062.079) and USB cable (11000143). ¶-Cradle provides charging to iPad and USB port for Active Sync and programming support. Two Cradles plus one Battery Pack Charger can be daisy-chain connected to one AC Adapter. ¶-Replaces withdrawn PIN IPAD142-01	\$367		
				Dealer Net Price: \$239. Product may be withdrawn or unavailable from vendor — check with Retalix Order Entry prior to ordering.
CA05306-D530	Fujitsu AC Adapter for iPad The AC Adapter powers up to two Cradles and/or Battery Pack Chargers. Requires Power Cord (1062.079) below. If you add a Power Chain AC Cable (11001799 below) it will power a second Battery Pack Charger unit. ¶-Replaces withdrawn PIN 11001795	\$55		
				Dealer Net Price: \$36. Product may be withdrawn or unavailable from vendor — check with Retalix Order Entry prior to ordering.
11001795	Fujitsu AC Adapter for iPad Replaces withdrawn PIN CA05306-D520 ¶-This product withdrawn and replaced by CA05306-D530	\$55		
				Dealer Net Price: \$36. Product Withdrawn
1062-079	Fujitsu AC Cable / Power Cord, US	\$4		
				Product may be withdrawn or unavailable from vendor — check with Retalix Order Entry prior to ordering.



11001794	Fujitsu Cradle, iPad 100-20 Supports iPad in stationary position, and allows USB connection between iPad and PC or other USB device for loading applications, development, synch, configuration or testing use. Also will charge the battery when the iPad is in the Cradle with similar performance as the Battery Pack Charger. Requires AC Adapter (CA05306-D530) and Power Cable (1062.079) below. ¶-Replaces withdrawn PIN KD02902-2991	\$256 Dealer Net Price: \$166. Product may be withdrawn or unavailable from vendor — check with Retalix Order Entry prior to ordering.
11001799	Fujitsu iPad Power Chain AC Cable Required to power a second Cradle or Battery Pack Charger from an existing Cradle with AC Adapter or an existing Battery Pack Charger powered by an AC Adapter.	\$22 Dealer Net Price: \$14. Price subject to change by manufacturer. Product may be withdrawn or unavailable from vendor — check with Retalix Order Entry prior to ordering.
11000143	Fujitsu Non-Powered USB A-B Cable, 1.2M, White Required with D22/D25 only if TeamKey or MSR options are selected. Provides non-powered USB "A" connector on one end and non-powered USB "B" connector on the other. ¶-Also used by 133UQ, Epson printers (non-powered USB interface), iPad cradle etc. ¶-Replaces withdrawn PIN 90000602	\$12 Product may be withdrawn or unavailable from vendor — check with Retalix Order Entry prior to ordering.
11001984	Fujitsu Pistol Grip ("scan handle") with electronic trigger interface for iPad, RoHS Does not include charger or provide charge-through capability. ¶-This model meets RoHS standards and replaces KD02902-1260 (non-RoHS).	\$237 Dealer Net Price: \$154. Product may be withdrawn or unavailable from vendor — check with Retalix Order Entry prior to ordering.
11002195	Fujitsu iPad Holster, Leatherette	\$34 Dealer Net Price: \$22. Price subject to change by manufacturer. Product may be withdrawn or unavailable from vendor — check with Retalix Order Entry prior to ordering.
11002196	Fujitsu iPad Hand Strap	\$53 Dealer Net Price: \$34. Price subject to change by manufacturer. Product may be withdrawn or unavailable from vendor — check with Retalix Order Entry prior to ordering.



11003297 **Fujitsu iPad F12 Stylus, Black**
Replaces Withdrawn PIN 11002199

\$3

Dealer Net Price: \$2. Product may be withdrawn or unavailable from vendor — check with Retalix Order Entry prior to ordering.

Fujitsu iPad: Programming Tools

PIN	Description	List Price	Install Price	Maint. Price
11000143	Fujitsu Non-Powered USB A-B Cable, 1.2M, White Required with D22/D25 only if TeamKey or MSR options are selected. Provides non-powered USB "A" connector on one end and non-powered USB "B" connector on the other. ¶-Also used by 133UQ, Epson printers (non-powered USB interface), iPad cradle etc. ¶-Replaces withdrawn PIN 90000602	\$12		
				Product may be withdrawn or unavailable from vendor — check with Retalix Order Entry prior to ordering.
11000145	Fujitsu Non-Powered USB A-B Cable, 3.5M, White Required with D22/D25 only if TeamKey or MSR options are selected. Provides non-powered USB "A" connector on one end and non-powered USB "B" connector on the other. ¶-Also used by 133UQ, Epson printers (non-powered USB interface), iPad cradle etc.	\$15		

