

Update Bulletin

ISS45 Table Extracts and Trickle Feed Features

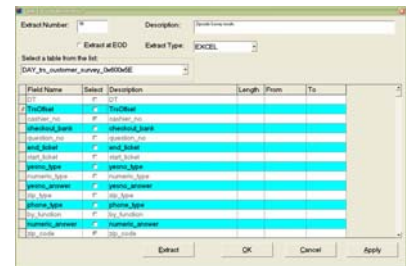
September 28, 2005

StoreNext is pleased to offer the Table Extracts option for ISS45 V8. This product, available with versions 8.10.1 and later provides an extraordinarily simple point-and-click method of creating reports (a favorite example is the standard “zip code” shopper survey) on a variety of system SQL data. In addition, the Trickle Feed option is also provided with ISS45 V8.

Since the Table Extracts system relies upon the SQL database, this function is not available in V7. The Trickle Feed Option is available with V7 as an option (included free with V8).

This Table Extract answers most of the little reporting customization requests that come from your users. Instead of filing Enhancement Requests, you can fulfill the requirements — often in just a few minutes — and pick up a little revenue and some professional services.

The V8 Table Extracts system provides about 50 additional special-purpose tables in the V8 SQL system. To get an extract, you go to the Table Extracts menu and simply select the table with the data you want (the zip code extract would take data from the Customer Survey table for example). Then you check the boxes of the data fields you want, select the file format in which you want the extract to be provided, give the extract a description and click the “Extract” button (or click the “EOD” box if you want the extract automatically done at that time).

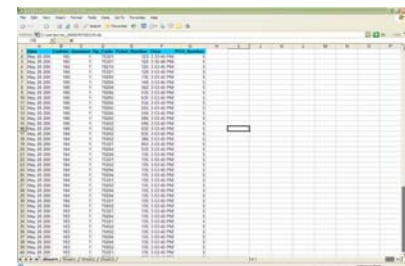


The extract will be provided in ASCII, XML or Excel formats for easy analysis or importing into other programs or databases.

The Trickle Feed option enables users to specify T-Log information that needs to be available for near real-time use. At parameterized intervals, the selected data will be packaged and presented to a specific directory for pick-up.

To help you, there’s a new [Table Extracts User Reference](#) as well as the [Trickle Feed User Reference](#).

Also, a “[Power Tools Presentation](#)” (with Table Extracts, Trickle Feed and also the CWAR/SRR system) has been created for you and is available on the Presentation Page of the ISS45 Dealer Support Web site. (You will find this presentation particularly useful if you are trying in vain to read the very fine print on the sample graphics on this page — they show the zip code example.)



Both these options are controlled by the ISS45 software key. If your demonstration or lab keys do not support these options, StoreNext will be happy to provide a file upgrade via electronic mail for these and any other options that are not supported on your keys. Please provide a SKIF for any such upgrades that may be desired (must use the current [SKIF](#) for these options).

[Continued on following page.]

This document and information are supplied to StoreNext Retail Technologies personnel and third parties to assist them in doing business with StoreNext. They are not to be used or distributed for any other purpose.

StoreNext Retail Technologies LLC endeavors to ensure that the information in this document is correct and fairly stated, but does not accept liability for any error or omission.

The following chart provides the option pricing for Trickle Feed and the Table Extracts. Again, the Trickle Feed is provided with all V8, and is a billable option for V7. The Table Extracts option is billable for V8 and not available for V7.

PIN	Item	Price	Inst	Maint
45180/082	ISS45 V8 Table Extracts Option (available with version 8.10.1 and above only)	\$ 595	\$ 200	\$ 100
45180/079	ISS45 V7 Trickle Feed Option (provided as standard/no charge with ISS45 V8)	995	100	100

To Your Success,



Anthony van Sevelter