






The logo for ISS 45, consisting of the letters 'ISS' stacked above the number '45' in a large, bold, black serif font, all enclosed within a thin black rectangular border.

-  *ISS45 Version 7.10.1-100/110*
-  *Release Notes & What's New*
- 
- 
- 

ISS45 V7 Release Notes & What's New

Date of Issue	Product Identification Number	Part Number	Brief Description
February 2006	45001/080	89000294	7.10.1-100/110 Release

**© Copyright StoreNext Retail Technologies LLC 1995-2006
All rights reserved**

This publication is protected by federal copyright law. No part of this publication may be reproduced or transmitted into any human or computer language in any form or by any means, stored in a retrieval system, transmitted, redistributed, translated or disclosed to third parties, or de-compiled in any way including, but not limited to, photocopy, photograph, electronic, mechanical, magnetic or manual without the express written permission of StoreNext Retail Technologies LLC or its licensors, if any. This document, notwithstanding the above, may be distributed in electronic or printed form to personnel who are employed by either (1) a StoreNext customer of the subject system of this document or (2) personnel from an authorized StoreNext dealer of the subject system of this document. All copies, so distributed and/or so authorized, shall contain a full copy of this copyright notice.

StoreNext Retail Technologies LLC endeavors to ensure that the information in this document is correct and fairly stated but does not accept liability for any error or omission. StoreNext Retail Technologies LLC makes no representation or warranties with respect to the contents hereof, and specifically disclaims any implied warranties of merchantability or fitness for a particular purpose or non-infringement. No commitments by StoreNext or its suppliers are made from this documentation which is provided for information only.

Development of StoreNext products and documentation is continuous: StoreNext Retail Technologies LLC reserves the right to revise this publication and to make changes from time to time in the contents hereof or in the products herein described or discussed without notice and without any obligation of StoreNext Retail Technologies LLC to notify any person or organization of such revision or changes. Information published in this document will likely become obsolete over time and it is recommended that users regularly check for updates and newer versions.

StoreNext Retail Technologies LLC has prepared this manual for use by users, authorized third parties and personnel of StoreNext Retail Technologies LLC as a guide to the proper installation, operation, customization and/or maintenance of StoreNext Retail Technologies LLC equipment and software. The drawings and specifications contained herein are the property of StoreNext Retail Technologies LLC and/or its licensors.

Third-party products, services, or company names referenced in this document may be trademarked or copyrighted by their respective owners, and are for identification purposes only.

Copyrights, trademarks and license agreements shall be governed and construed in accordance with the laws of the State of Texas and the Federal Arbitration Act, and shall benefit Retailix, its successors, and assigns.

Address comments and corrections to:

StoreNext Retail Technologies LLC
Software Program Director
6100 Tennyson Parkway
Suite 130
Plano, Texas 75024

Supervisor Barcode

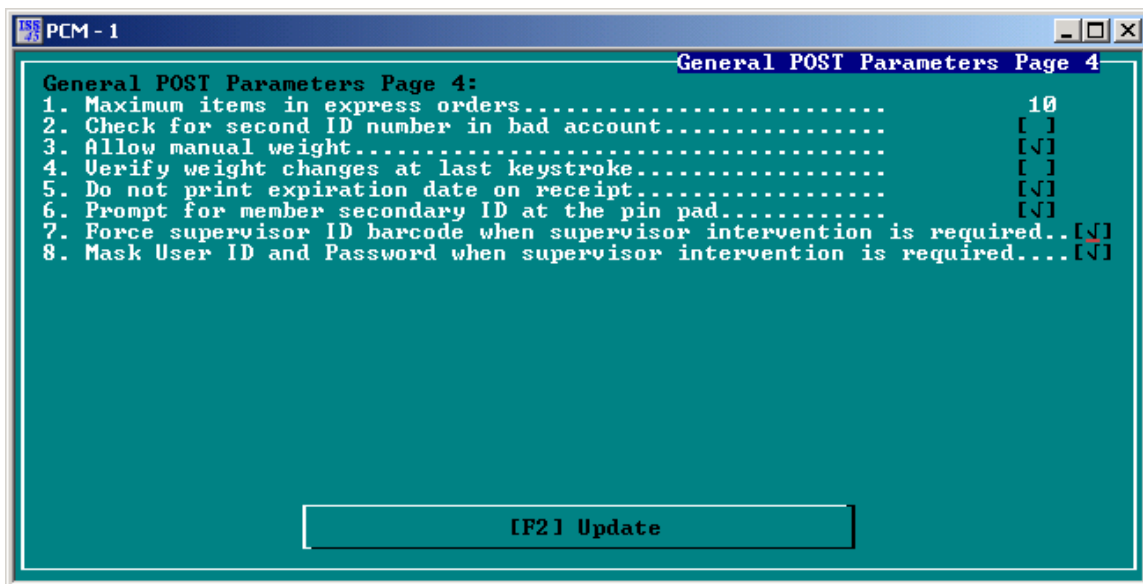
The Supervisor Barcode Function works with the existing cashier barcode scheme.

The supervisor barcode function will provide added security to the approval process and to the display.

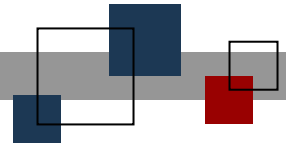
- By prohibiting the manual enter of manager ID – a scan will be required for the entry of the managers ID.
- By masking the manager ID and password from the supervisor screen
- By masking the manager ID from the display and the receipt.

How to set up this function:

1. In the back office go to screen 6-1-2-1-4.
2. Set 'Force Supervisor ID barcode when supervisor intervention is required' to 'Yes'.
3. Set 'Mask User ID and Password when supervisor intervention is required' to 'Yes'.



- There is an existing parameter for requiring password entry. It is 'Password required with cashier bar-code' located at 6-1-2-1-3. Set this parameter to 'Yes' to require the manager to enter a password.



© StoreNext Retail Technologies LLC 2006

StoreNext Retail Technologies LLC endeavors to ensure that the information in this document is correct and fairly stated but does not accept liability for any error or omission.

The development of StoreNext products and services is continuous and published information may not be up to date. It is important to check the current position with StoreNext. This document is not part of a contract or license save insofar as may be expressly agreed.