

The logo for ISS 45, featuring the letters 'ISS' in a bold, sans-serif font above the number '45' in a larger, stylized font, all enclosed within a thin black rectangular border.

■ *ISS45 Version 7.1.1.1-050*
■ *Release Notes & What's New*



DRAFT

ISS45 V7 Release Notes & What's New

Date of Issue	Product Identification Number	Part Number	Brief Description
September 2006	45001/080	89000322	7.1.1.1-050 Release

**© Copyright StoreNext Retail Technologies LLC 1995-2006
All rights reserved**

This publication is protected by federal copyright law. No part of this publication may be reproduced or transmitted into any human or computer language in any form or by any means, stored in a retrieval system, transmitted, redistributed, translated or disclosed to third parties, or de-compiled in any way including, but not limited to, photocopy, photograph, electronic, mechanical, magnetic or manual without the express written permission of StoreNext Retail Technologies LLC or its licensors, if any. This document, notwithstanding the above, may be distributed in electronic or printed form to personnel who are employed by either (1) a StoreNext customer of the subject system of this document or (2) personnel from an authorized StoreNext dealer of the subject system of this document. All copies, so distributed and/or so authorized, shall contain a full copy of this copyright notice.

StoreNext Retail Technologies LLC endeavors to ensure that the information in this document is correct and fairly stated but does not accept liability for any error or omission. StoreNext Retail Technologies LLC makes no representation or warranties with respect to the contents hereof, and specifically disclaims any implied warranties of merchantability or fitness for a particular purpose or non-infringement. No commitments by StoreNext or its suppliers are made from this documentation which is provided for information only.

Development of StoreNext products and documentation is continuous: StoreNext Retail Technologies LLC reserves the right to revise this publication and to make changes from time to time in the contents hereof or in the products herein described or discussed without notice and without any obligation of StoreNext Retail Technologies LLC to notify any person or organization of such revision or changes. Information published in this document will likely become obsolete over time and it is recommended that users regularly check for updates and newer versions.

StoreNext Retail Technologies LLC has prepared this manual for use by users, authorized third parties and personnel of StoreNext Retail Technologies LLC as a guide to the proper installation, operation, customization and/or maintenance of StoreNext Retail Technologies LLC equipment and software. The drawings and specifications contained herein are the property of StoreNext Retail Technologies LLC and/or its licensors.

Third-party products, services, or company names referenced in this document may be trademarked or copyrighted by their respective owners, and are for identification purposes only.

Copyrights, trademarks and license agreements shall be governed and construed in accordance with the laws of the State of Texas and the Federal Arbitration Act, and shall benefit Retailix, its successors, and assigns.

Address comments and corrections to:

StoreNext Retail Technologies LLC
Software Program Director
6100 Tennyson Parkway
Suite 130
Plano, Texas 75024

Table of Contents

Introduction	3
Front Office Enhancements	4
6198 – Remote Pickup Interface	4
POS Enhancements	5
8115 – Pay By Touch Support	5
8116 – Customer Display Info on PinPad	10
8117 – Automatic Tendering of Gift Card Balance.....	12
8121 – Signature Capture Display and Approval	14
8122 – Automatic Prompting for MobileLime Number	16
8201 – Optional Combined Weighed Items on Receipt	18
Other Enhancements	21

Introduction

Several new features and enhancements were made recently to the StoreNext ISS45 system as a result of customer change requests. These changes are reflected in the accompanying ISS45 7.1.1.1-050 software. The Change Request Document (CRD) number assigned to each enhancement is listed in the description heading.

These improvements are explained in detail in the following pages and are not included in your Office Users Guide or Office Administrator's Reference. Please keep this system update with your User Guides for quick reference. These changes will be included in the next release of these User Guides. If you have any questions regarding this release, please contact StoreNext Support.

Front Office Enhancements

6198 – Remote Pickup Interface

An application program interface (API) DLL found in this release will allow the store to perform a remote pickup using a 3rd party safe application and confirm the transaction within the ISS45 Cash Office. When implemented, this feature will save the manager trips to the lane to prevent the control check for exceeding the maximum amount in drawer to be displayed.

A new log file (RMT_INFC.LOG) located in the C:\PCMaster\Log folder will log any errors that occur with receiving data from the interface or performing the requested pickup and returning data to the interface. The log will also hold information for successful pickup transactions.

Note:

Once the Control Check for Maximum Amount in Drawer displays for cash, the manager must address the control check whether using this new interface or not. The icon that appears on the POS when the drawer limit is reached is unrelated and unchanged by this development.

Report Change

The Cashier Pickup Report (1-3-1-9) will display “PC 9” in the POST column screen for pick-ups performed using the remote interface.

Ver 7.1.1.1002		TIM'S MARKETS		PC# 01 MFS1						
±Date:08/17/06		TIM'S MARKETS		PC 9						
*Time:13:57		Cashier Pick-Up Report								
*Cashier Number - 101										
*Cashier Name - 101										
*Date		Time	POST	CASH	CHECKS	GIFT CER	FOODSTAM	EBT	CASH	FOREIG
*08/17/2006	11:21	PC 9	1.00	0.00	0.00	0.00	0.00	0.00	0.00	0.
*08/17/2006	11:42	PC 9	0.00	2.00	0.00	0.00	0.00	0.00	0.00	0.
*08/17/2006	13:51	PC 9	0.00	0.00	3.00	0.00	0.00	0.00	0.00	0.
*08/17/2006	13:54	PC 9	0.00	0.00	0.00	4.00	0.00	0.00	0.00	0.
			1.00	2.00	3.00	4.00	0.00	0.00	0.00	0.
***** End of Report *****										
[F10] Print										
08/17/2006		13:57:26		Copyright StoreNext						

POS Enhancements

8115 – Pay By Touch Support

ISS45 now supports PBT (Pay By Touch) biometric finger scanning as a tendering option. This solution allows a customer to initiate and tender a sales transaction with no physical documentation (i.e. loyalty card, tender, driver's license). In addition, ACH (Automated Clearing House) transactions can be handled through PBT.

ISS45 can also obtain customer birthdates and loyalty card numbers automatically from MTXEPS, in transactions where the finger scanning payment method is used. By implementing this feature, customer transactions are expedited by bypassing birth date and loyalty card prompting.

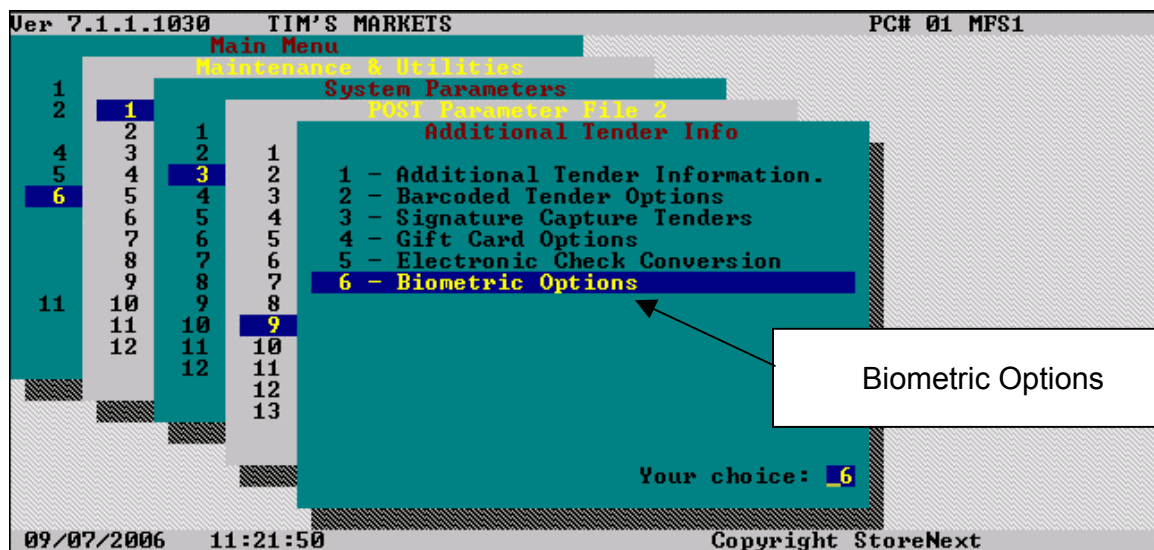
The TLOG will indicate if the media, loyalty card and/or birth date were obtained via PBT.

Note:

PBT data will not override the customer's loyalty card or birth date data if they are previously entered by the cashier within the transaction.

New Parameters

As part of this new feature the new "6 - Biometric Options" menu option has been created under Additional Tenders (6-1-3-9).



The Biometric Options folder displays as follows:

```

Biometric Options
Use Biometric Identification functionality..... [ X ]
Display loyalty member name from Biometric Identification..... [ ]
Retrieve DOB from Biometric Identification for age verification [ ]
Retrieve loyalty information from Biometric Identification..... [ ]
Display EFT payment icon on cashier display..... [ ]
Customized EFT message on cashier display..... [ ]

ACH Tender Number..... 0

[F2] Update
  
```

Parameter	Explanation
Use Biometric Identification Functionality	This parameter defines whether the store uses fingerprint capture to access the customer's information for EFT payment, date of birth and/or loyalty card data. When checked, the POS will poll the EFT interface for customer information.
Display Loyalty Member Name from Biometric Identification	When checked, the member name returned from Biometric Identification will be displayed on the cashier display. This functionality is enabled when the "Retrieve loyalty information from Biometric Identification" parameter is checked.
Retrieve DOB from Biometric Identification for Age Verification	When checked, the birth date will be retrieved from Biometric Identification, if available. This functionality is enabled when the "Use Biometric Identification functionality" parameter is checked.
Retrieve Loyalty Information from Biometric Identification	When checked, the loyalty card number and member name will be retrieved from Biometric Identification, if available. This functionality is enabled when the "Use Biometric Identification functionality" parameter is checked.

Display EFT Payment Icon on Cashier Display	When checked, an EFT icon will be displayed on the cashier display when the customer has initiated any payment type on the EFT Pin Pad.
Customized EFT Message on Cashier Display	When checked, the POS application will echo the Pin Pad messages for the customer to the cashier display in a high granularity level.
ACH Tender Number	Enter the tender number to be used for ACH transactions (i.e. Check or Payroll Check).

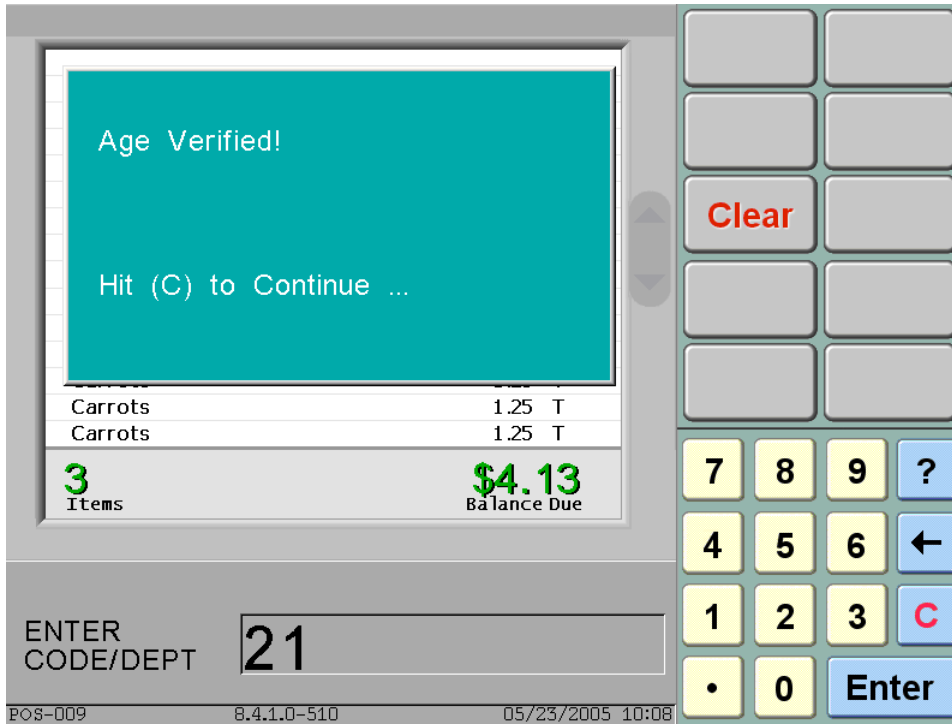
Modified Parameter

The explanation of the following Restricted Sale Birthday Validation parameter (6-1-2-11-1) has been modified to reflect new Biometric functionality.

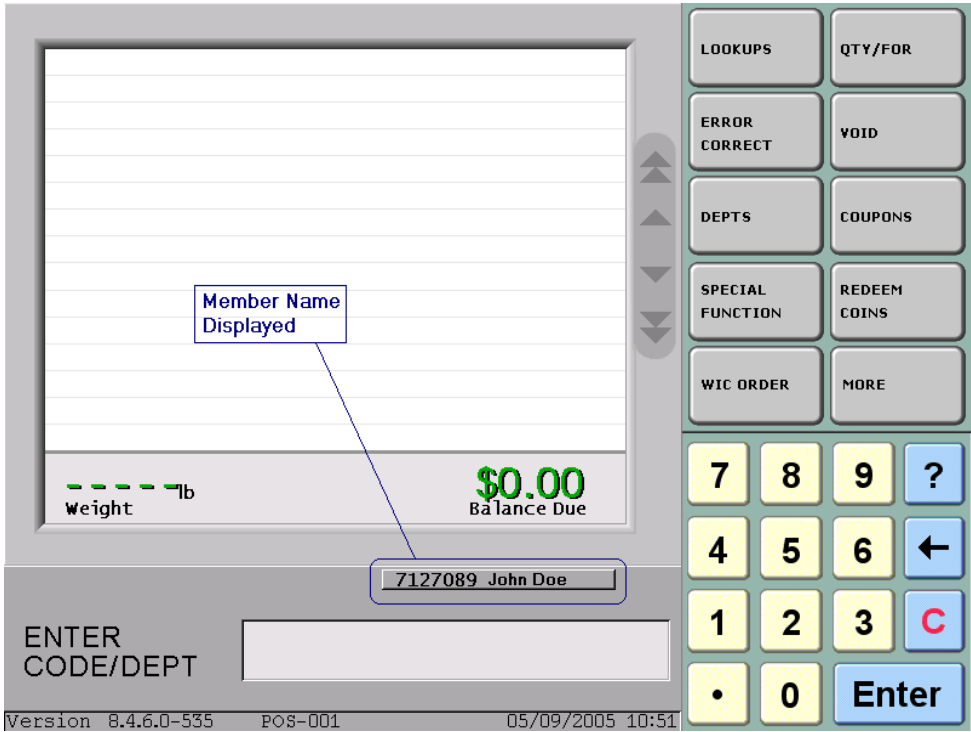
Parameter	Explanation
Prompt to Accept Birthday	Check this parameter if you want the POST to ask the cashier for birthday verification. If the birth date was retrieved through Biometric Identification, this parameter will be ignored and the cashier will not be prompted to accept the birth date.

New POS Screens

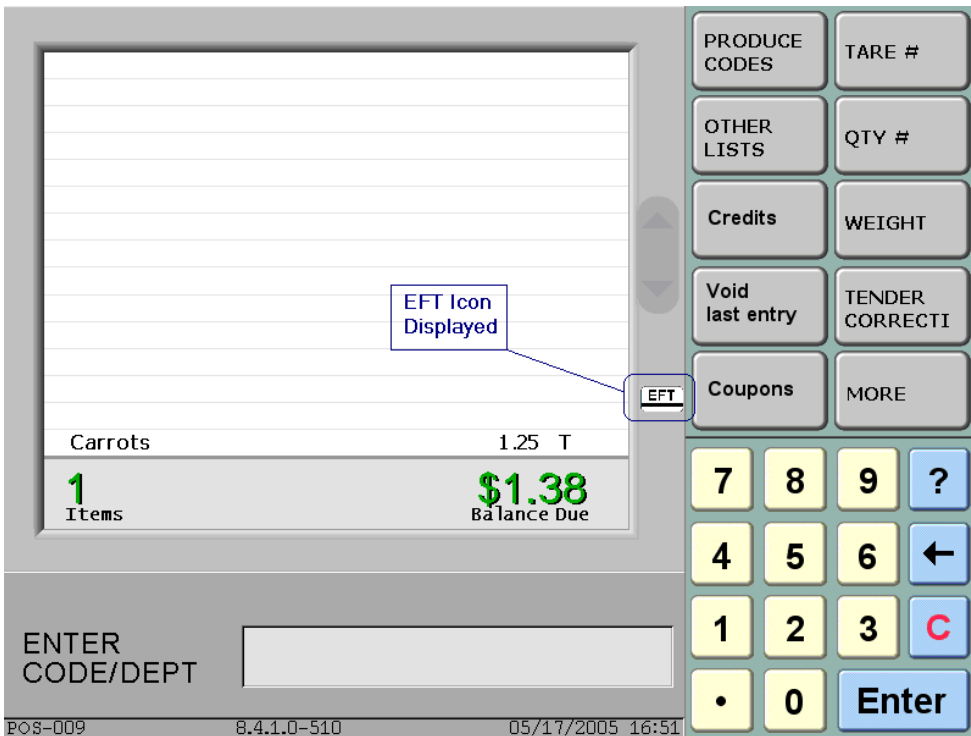
The following POS screen will appear if the customer's birth date passes the age verification process through PBT indicating the customer is of age to purchase the item:



If the loyalty card number was received from MTXEPS and the "Display Loyalty Member Name from PBT" parameter is checked, the member name will display:



If the "Display EFT Payment Icon on Cashier Display" parameter is checked and the POS does not already have an indication that an EFT payment was initiated, an EFT Icon will display:



8116 – Customer Display Info on PinPad

ISS45 now has the ability to display Customer Display information on the PinPad. This feature may be used to replace Customer Displays when implementing hardware cost savings in the store.

Notes:

The store's installed MTXEPS OpenEPS version must support this feature. In addition, the MTXEPS Scrolling Receipt Screen Files option must be installed for the specific PinPad hardware.

The PinPad will display the line information as it is displayed in the Customer Display (without the capability of scrolling). After the cashier presses the Total key and the total is displayed on the PinPad, no additional display information will be sent to the device (unless the cashier returns to sale mode and scans additional items). The Balance Due will be sent to the PinPad only if the Receipt Printing Parameter "Print 'Bal. Due' each time subtotal is pressed" (6-1-3-11) is checked. When the order is finished, WinPOS will send a command to clear the PinPad display.

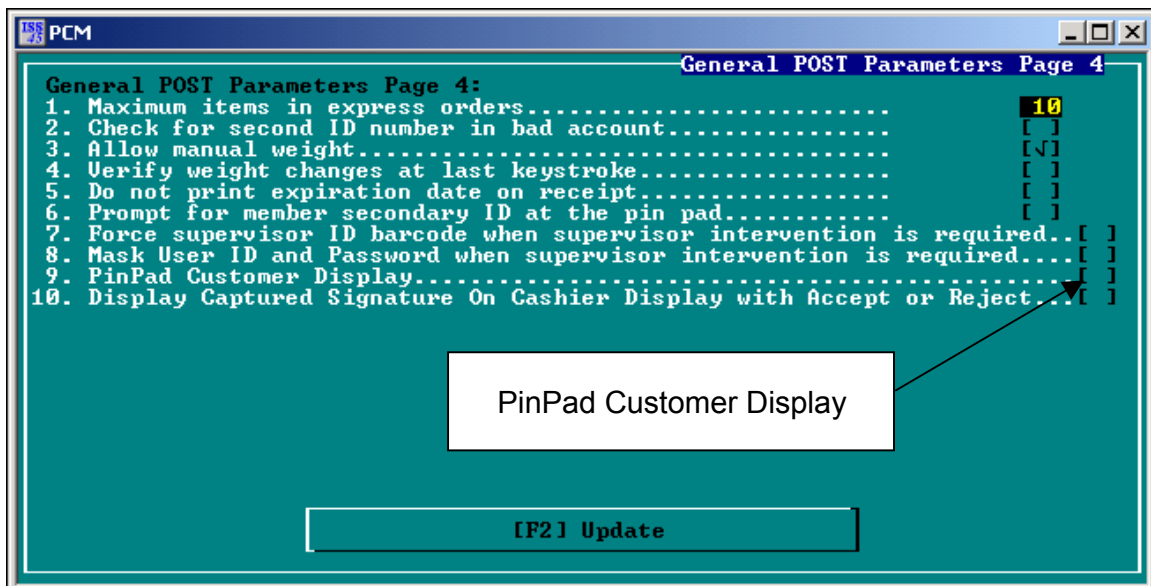
Notes:

Since the PinPad device only supports up to 31 characters per line, the description of the item might be truncated.

The running total, food stamp balance and weight will not be displayed at the PinPad device.

New Parameter

As part of this new feature the following parameter has been added to the General POST Parameters 4 screen (6-1-2-1-4).



Parameter	Explanation
PinPad Customer Display	This parameter will direct WinPOS to send all the receipt information to the PinPad, the same way it is sent to the Customer Display: every time an item/department/coupon is scanned, rung or key-entered.

8117 – Automatic Tendering of Gift Card Balance

A new Gift Card setting in this release of ISS45 eliminates the need to send a second approval request to MTXEPS when partially tendering a transaction with the card's available balance. Historically, if tendering a Gift Card amount when the amount available is less than the amount requested for approval, MTXEPS responds with a decline and then prompts the cashier if they wish to use the available balance. A second approval request is then initiated.

For example, a transaction total is \$20.15 and the order is tendered with a Gift Card that has an available balance of \$4.37. The amount of \$20.15 is sent for approval. With this new setting enabled, the MTXEPS will now send back an approval for \$4.37. The POS will tender \$4.37 on the Gift Card, prompt the cashier with the amount tendered and show a balance due of \$15.78. The cashier can then tender the remaining amount with additional Gift Cards or another tender. The approval is automatic and does not require customer input.

New Parameter

As part this enhancement the following parameter has been added to the Gift Card Options screen (6-1-3-9-4):

Gift Card Options			
Gift Card in system.....			[N]
PLU Range.....	From 9999999999999999	To 9999999999	
Department Range.....	From 0	To 0	
Card value.....	From 1.00	To 5.00	
PLU Number for recharging.....			100
Gift Card activation after tender.....			[N]
Parameters for StoreLine Payment:			
Allow offline gift card activation.....			[N]
Gift card activation tender number.....			25
Max number of gift cards purchased in single order.....			0
CC exceeding max gift cards in single order.....			0
Max amount for gift cards purchased in a single order.....			.00
CC exceeding gift cards amount in single order.....			0
CC for Price Override on Gift Card department range.....			0
Automatic tender of available balance for Gift Card.....			[]

Automatic Tender of
Available Balance for Gift
Card

Parameter	Explanation
Automatic Tender of Available Balance for Gift Card	Check this box to allow the available Gift Card balance to be approved with Host and returned for the amount available.

8121 – Signature Capture Display and Approval

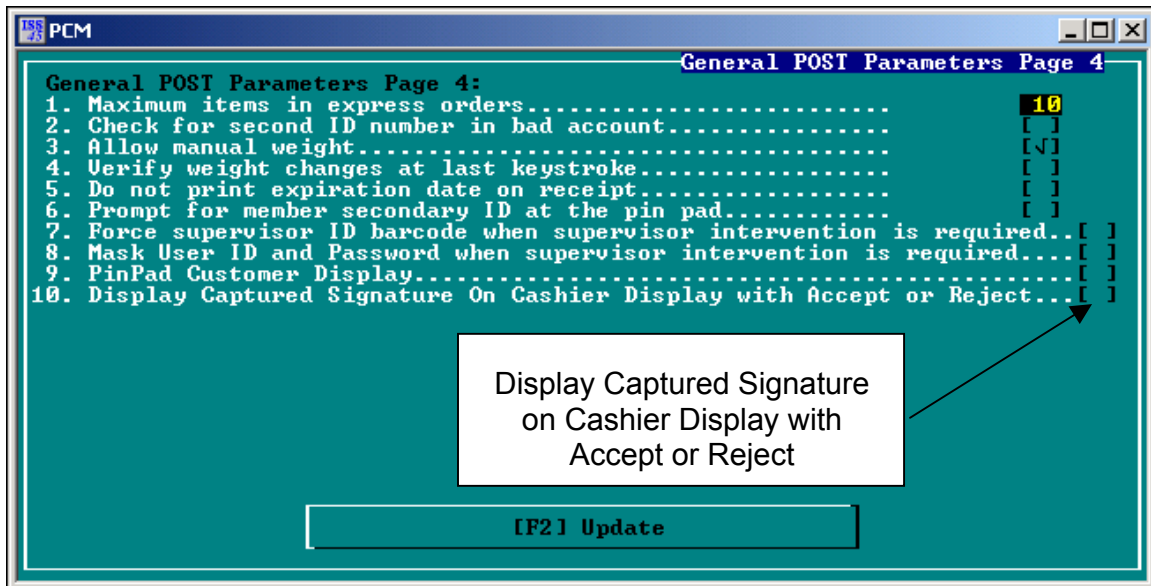
ISS45 now has the ability to show the customer's captured signature at the cashier display prior to approving the transaction. This new feature allows the cashier to get real time signature confirmation, reducing fraud and adding security to the transaction.

Note:

MTXEPS versions containing signature capture on the PinPad are required to utilize this feature. In addition, the store must have Signature Capture set up in MTXEPS for each tender that will utilize this feature (i.e "O - Signature Capture" in the TAC Sequence). Please consult the MTXEPS User Guide for these settings.

New Parameter

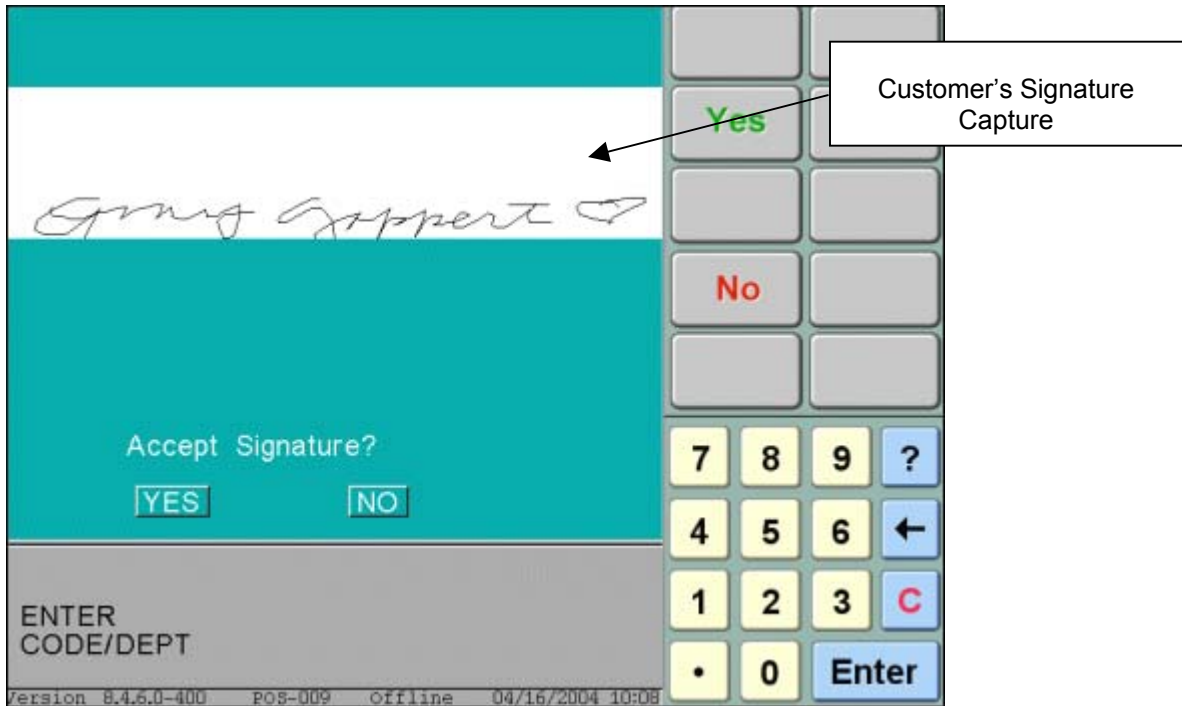
As part of this new feature the following parameter has been added to the General POST Parameters 4 screen (6-1-2-1-4).



Parameter	Explanation
Display Captured Signature on Cashier Display with Accept or Reject	When checked, the captured signature from the EFT terminal will be displayed on the cashier's screen. The cashier will either accept or reject the signature. When unchecked, the captured signature will not display.

New POS Screen

With the “Display Captured Signature on Cashier Display with Accept or Reject” parameter checked, a transaction that is approved by the EFT provider and requires signature will appear as follows:



To approve the EFT transaction, the cashier must press the “Yes” key. If rejected (by press the “No” key) by the cashier, the customer may sign again or cancel the transaction. If “Cancel” is chosen, a paper receipt is printed for signature.

8122 – Automatic Prompting for MobileLime Number

A new parameter in this release of ISS45 will prompt the cashier to enter the customer's MobileLime number at the start of the ticket. In stores with large numbers of MobileLime Loyalty Members, the automatic prompt will save the cashier time in locating the current MobileLime Loyalty button/key (Keyboard Function Code 1140).

Notes:

MobileLime is a payment provider for stores where customers can pay for their purchases with their cell phone number.

If the "Do not prompt for Freq Shopper at the beginning of a ticket" parameter (6-1-2-5) is unchecked, this new parameter will be ignored and the MobileLime Loyalty prompt can only be accessed with the 1140 function code or the MobileLime tender.

MobileLime must be set in ISS45 system as the Host CCMS Type (6-1-1-9).

New Parameter

As part of this new feature the following parameter has been added to the MobileLime Parameters screen (6-1-3-13).

The screenshot displays the 'MobileLime Parameters' screen with the following parameters:

Parameter ID	Parameter Name	Value
1.	MobileLime Tender	0
2.	MobileLime Discount Tender	0
3.	MobileLime Timeout	0
4.	MobileLime Prefix of terminal ID	0
5.	MobileLime Discount Number	0
6.	Prompt for MobileLime Loyalty at start of ticket	[]

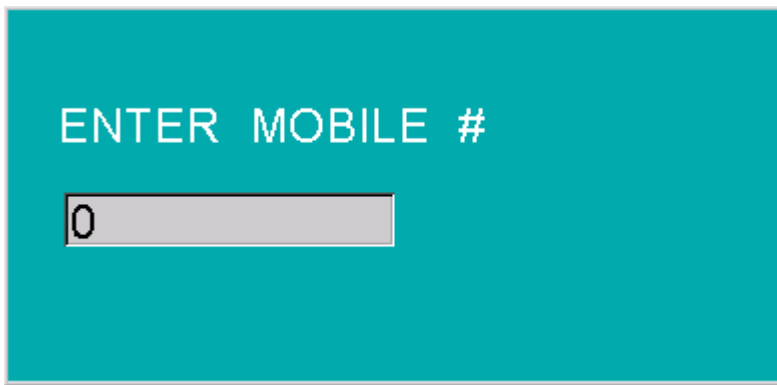
A callout box points to the value '[]' for parameter 6, with the text: 'Prompt for MobileLime Loyalty at Start of Ticket'.

At the bottom of the screen, there is a button labeled '[F2] Update'.

Parameter	Explanation
Prompt for MobileLime Loyalty at Start of Ticket	When checked (and no other loyalty prompts are set for the beginning of the ticket) the MobileLime Loyalty prompt will display during no sale mode.

Screen Prompt

The MobileLime Loyalty prompt displays as follows:



ENTER MOBILE #

The prompt can be bypassed using **Clear**, **Cancel**, or **Exit/No** and will remain if **Enter** is used without value.

8201 – Optional Combined Weighed Items on Receipt

A new parameter in this release of ISS45 provides additional flexibility when placing identical (same) items together on the customer receipt. You can now combine items on the receipt with the option whether or not to combine same “weighed” items on the customer receipt.

New Parameter

As part of this new feature the following parameter has been added to the Reorganize Receipt Parameters screen (6-1-3-6).

```

Reorganize Receipt Parameters Page 1
1. Buffer printing..... [✓]
2. Combine same items..... [ ]
3. Omit voided and cancelled items..... [ ]
4. Your savings today..... [✓]
5. Sort receipt..... [✓]

6. Main sort.....Department name + total [↓]
7. Second sort.....Alpha [↓]
8. Combine same weighed items..... [✓]

[F2] Update
  
```

Parameter	Explanation
Combine Same Weighed Items	Check this parameter to combine (same) weighed items on the customer receipt.

Other Enhancements

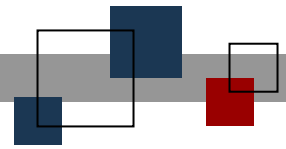
The following ISS45 7.1.1.1-050 program enhancements have been made internally and are explained briefly below.

- 8118 – ISS45 now supports Enhanced Promotion Reward Types of New Price per Quantity (Reward Type 17), Target Message (Reward Type 12), and Percent off Order (Reward Type 13) within General Batch Files. A new 2-digit Reward Type field (position 163 in the Member Promotion File) supports the creation of these and future reward types. If the original Reward Type field (position 95) contains a non-zero entry, then the new field will be ignored and General Batch processing will continue as in previous releases.

Note:

General Batch updates and changes are sent in ASCII files. These files must reside in the C:\PCMASTER directory. Batch file names should be BX#####.DAT, where ##### is a 6 digit batch number.

- 8360 – When entering a secondary customer ID at the PinPad, the time it takes to complete the customer search has been reduced.



© StoreNext Retail Technologies LLC 2006

StoreNext Retail Technologies LLC endeavors to ensure that the information in this document is correct and fairly stated but does not accept liability for any error or omission.

The development of StoreNext products and services is continuous and published information may not be up to date. It is important to check the current position with StoreNext. This document is not part of a contract or license save insofar as may be expressly agreed.