



A vertical column of five color swatches: dark blue, medium blue, light blue, and very light blue.
*Epson OPOS Setup Procedures
for ISS45 V7 and V8*

Epson OPOS Setup Procedures For ISS45

Date of Issue	Product Identification Number	Part Number	Brief Description
June 2005	No PIN	89000228	Initial Release
August 2007	No PIN	89000394	Issue 2

**©Copyright StoreNext Retail Technologies LLC 1995-2007
All rights reserved**

This publication is protected by federal copyright law. No part of this publication may be reproduced or transmitted into any human or computer language in any form or by any means, stored in a retrieval system, transmitted, redistributed, translated or disclosed to third parties, or de-compiled in any way including, but not limited to, photocopy, photograph, electronic, mechanical, magnetic or manual without the express written permission of StoreNext Retail Technologies LLC or its licensors, if any. This document, notwithstanding the above, may be distributed in electronic or printed form to personnel who are employed by either (1) a StoreNext customer of the subject system of this document or (2) personnel from an authorized StoreNext dealer of the subject system of this document. All copies, so distributed and/or so authorized, shall contain a full copy of this copyright notice.

StoreNext Retail Technologies LLC endeavors to ensure that the information in this document is correct and fairly stated but does not accept liability for any error or omission. StoreNext Retail Technologies LLC makes no representation or warranties with respect to the contents hereof, and specifically disclaims any implied warranties of merchantability or fitness for a particular purpose or non-infringement. No commitments by StoreNext or its suppliers are made from this documentation which is provided for information only.

Development of StoreNext products and documentation is continuous: StoreNext Retail Technologies LLC reserves the right to revise this publication and to make changes from time to time in the contents hereof or in the products herein described or discussed without notice and without any obligation of StoreNext Retail Technologies LLC to notify any person or organization of such revision or changes. Information published in this document will likely become obsolete over time and it is recommended that users regularly check for updates and newer versions.

StoreNext Retail Technologies LLC has prepared this manual for use by users, authorized third parties and personnel of StoreNext Retail Technologies LLC as a guide to the proper installation, operation, customization and/or maintenance of StoreNext Retail Technologies LLC equipment and software. The drawings and specifications contained herein are the property of StoreNext Retail Technologies LLC and/or its licensors.

Third-party products, services, or company names referenced in this document may be trademarked or copyrighted by their respective owners, and are for identification purposes only.

Copyrights, trademarks and license agreements shall be governed and construed in accordance with the laws of the State of Texas and the Federal Arbitration Act, and shall benefit Retailix, its successors, and assigns.

Address comments and corrections to:

StoreNext Retail Technologies LLC
Software Program Director
6100 Tennyson Parkway
Suite 130
Plano, Texas 75024

TABLE of CONTENTS

0.	Document Control.....	b
0.1.	Distribution List — As per manuals	b
0.2.	Changes Forecast	b
0.3.	Change History	b
1.	RCS OPOS Common Control Objects Installation	1
1.1.	Installation of RCS OPOS Common Control Objects	1
2.	Epson OPOS Version 2.50E Installation	6
2.1.	Installation of Epson OPOS	6
2.2.	Epson USB Device Setup	16
2.2.1.	Epson USB Printer Device.....	16
2.2.2.	Epson USB MICR Device	18
2.2.3.	Epson USB Check Scanner Device (Currently in V8 only and correct Epson printer to support this feature).....	20
2.2.4.	Cash Drawer conneceted to Epson USB Printer.....	22
2.3.	Epson RS232 Device Setup	25
2.3.1.	Epson RS232 Printer Device	25
2.3.2.	Epson RS232 MICR Device	27
2.3.2.2.	Run CheckHealth Interactive to test the MICR	29
2.3.3.	Epson RS232 Check Scanner Device (Currently in V8 only and correct Epson printer to support this feature).....	29
2.3.4.	Cash Drawer conneceted to Epson RS232 Printer.....	31
3.	Configuration Settings for Epson OPOS in V7	33
3.1.	POST Configuration Setup	33
3.1.1.	Printer and MICR setup	33
3.1.2.	ISS45 V7 WinPOS.ini setup.....	33
3.1.3.	Cash Drawer Setup	34
3.1.4.	ISS45 V7 WinPOS.ini setup.....	34
4.	Configuration Settings for Epson OPOS in V8	34
4.1.	POST Configuration Setup	34
4.1.1.	Printer, MICR and Cash Drawer.....	34
4.2.	Check Imaging Setup (Currently in V8 only and supported Epson printer).....	36

0. Document Control

0.1. Distribution List — As per manuals

0.2. Changes Forecast

This document will be updated as new configurations and corrections are made available

0.3. Change History

Issue 1: This is the initial release of this document.

Issue 2:Major rewrite of the document

NOTE: OPOS is only required for ECC, Check Imaging in V8, or if using a USB connection for the printer.

1. RCS OPOS Common Control Objects Installation

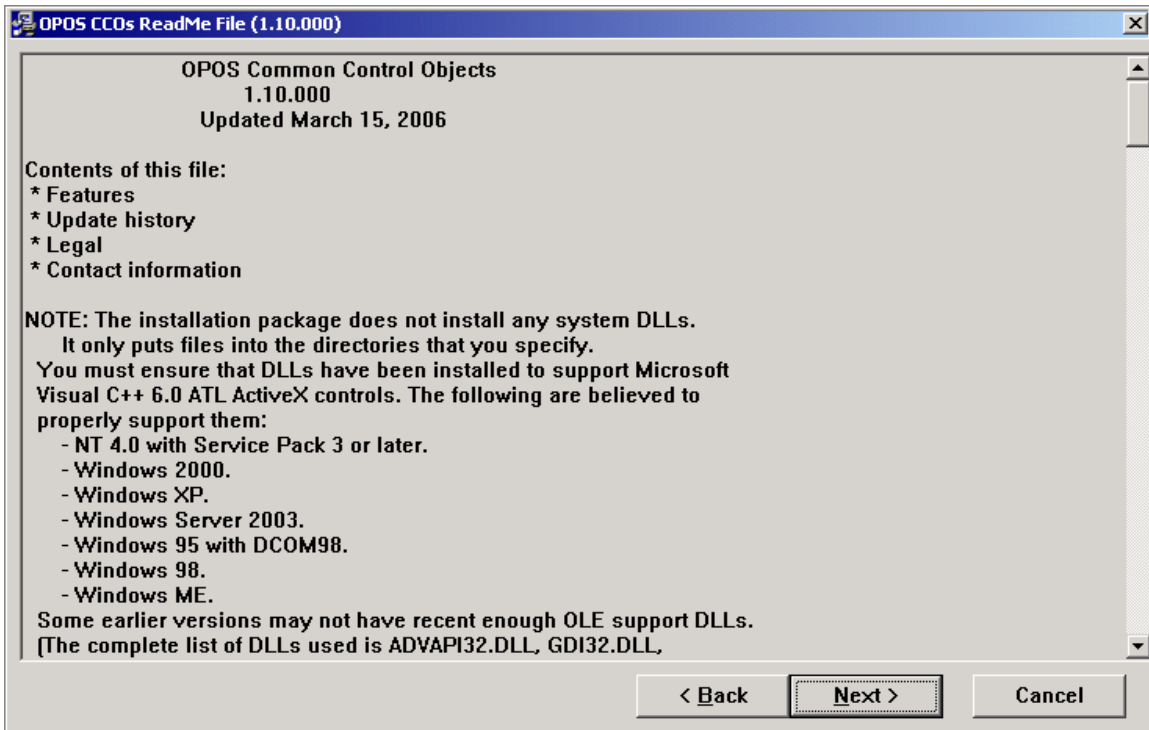
1.1. Installation of RCS OPOS Common Control Objects

1.1.1. The file can be found on the V7.1.2.0-050 distribution CD in the OPOS\RCS folder

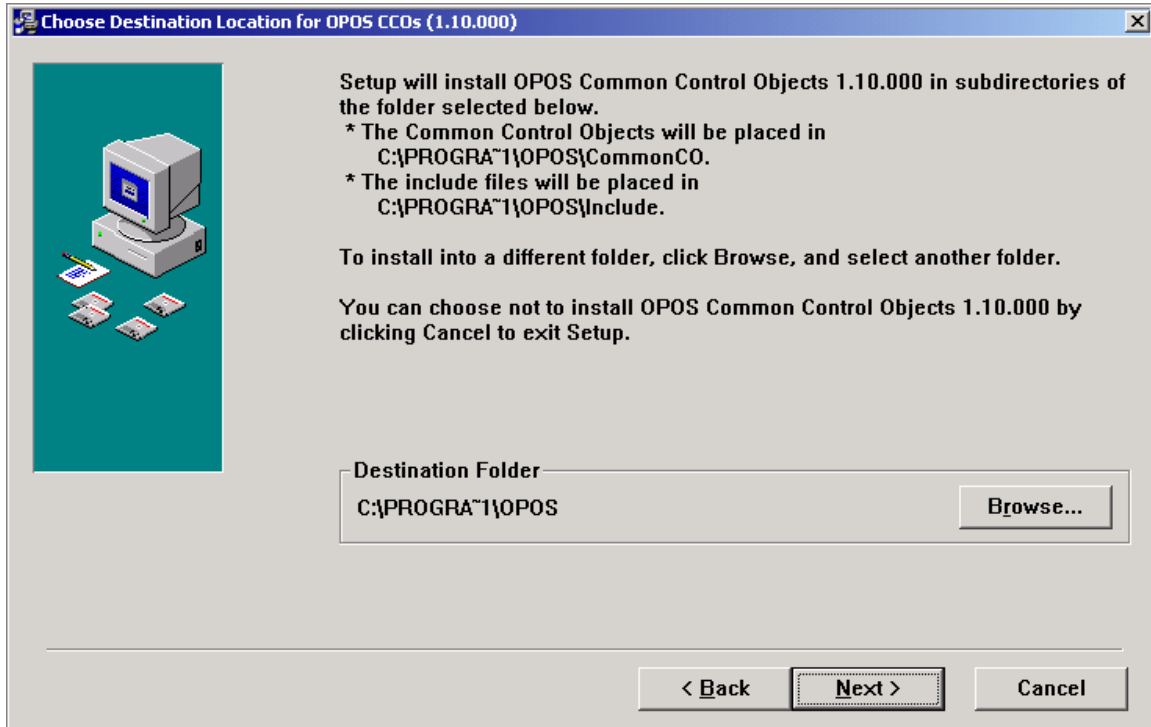
1.1.2. Run OposCCOs-1_10_000.EXE from the Start>Run Open: command line.
The Welcome screen appears



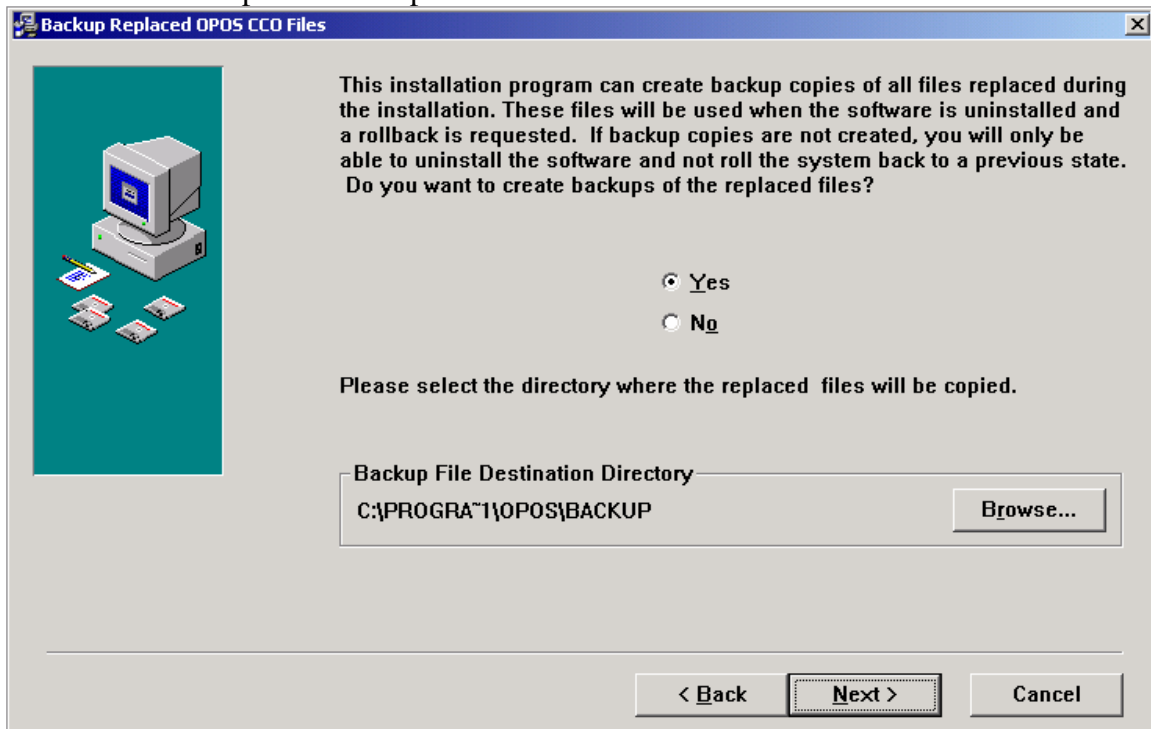
1.1.3. Click Next and the Read Me File screen appears



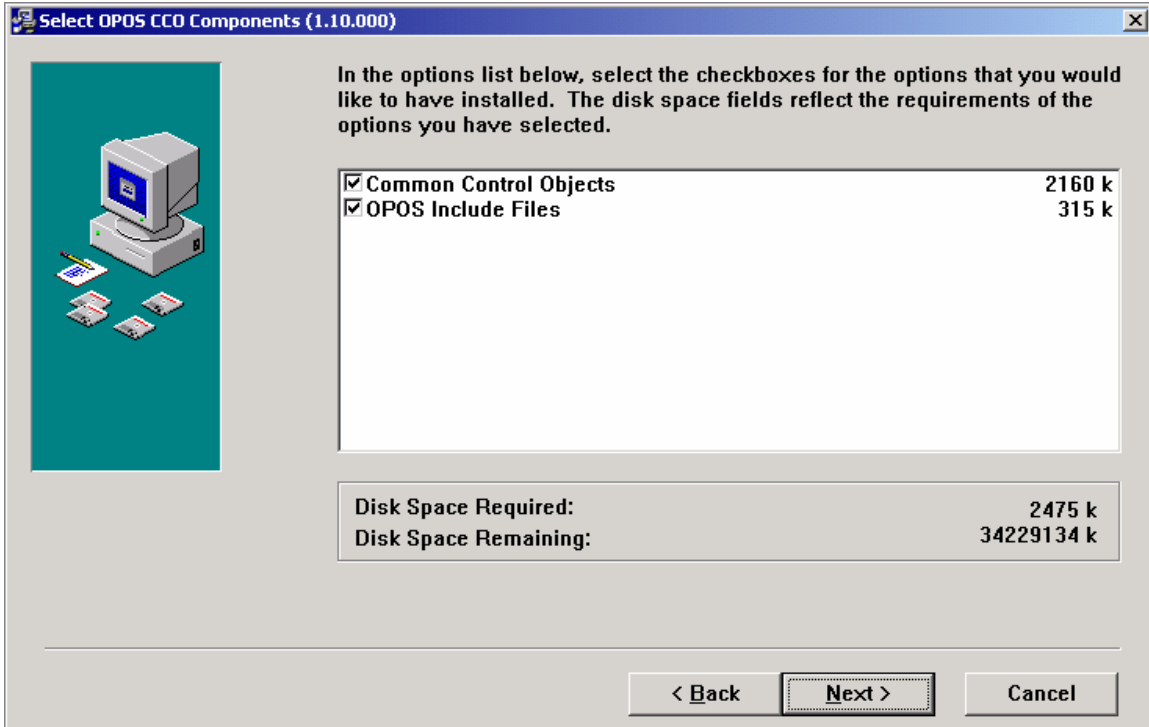
1.1.4. Click Next and the Choose Destination Location screen appears. Use the default and click Next



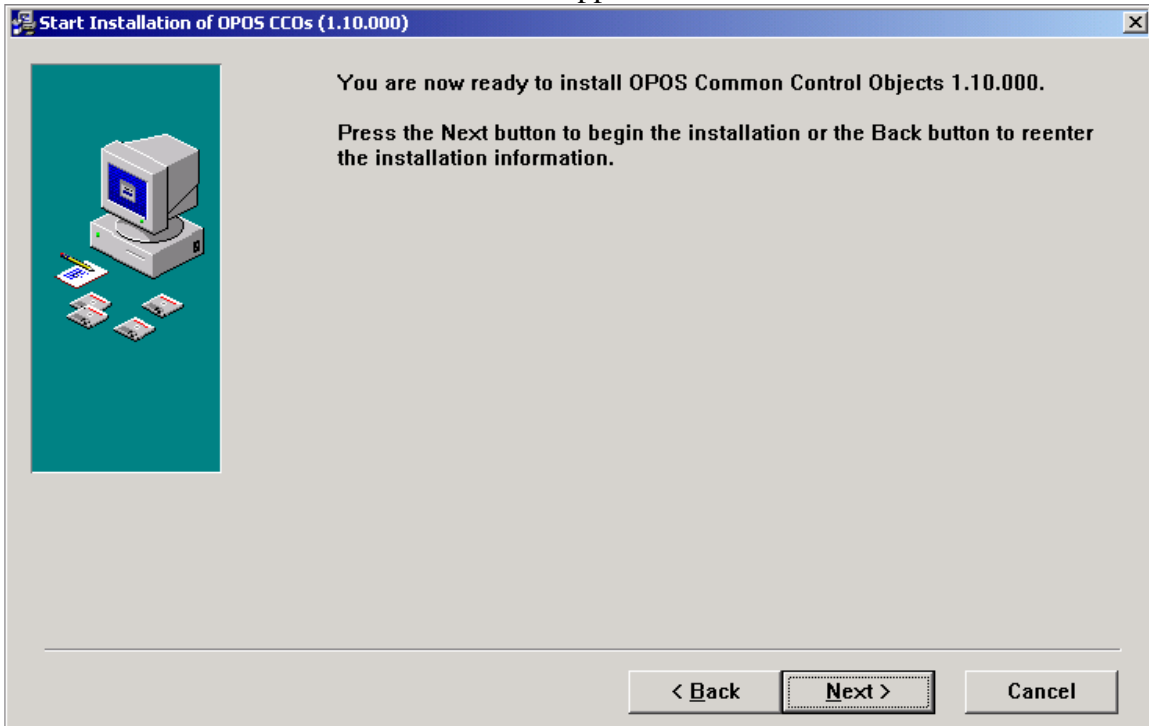
1.1.5. The Backup Replaced Files screen appears. Ensure Yes is selected and keep the default path then click Next.



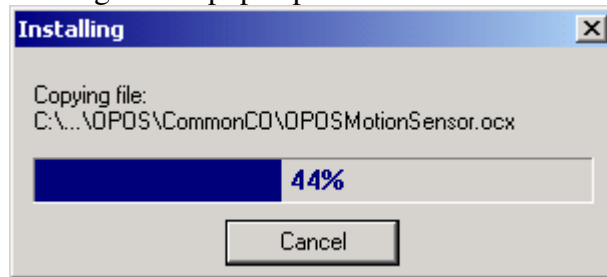
1.1.6. The Select Components screen appears. Ensure both options are selected and click Next.



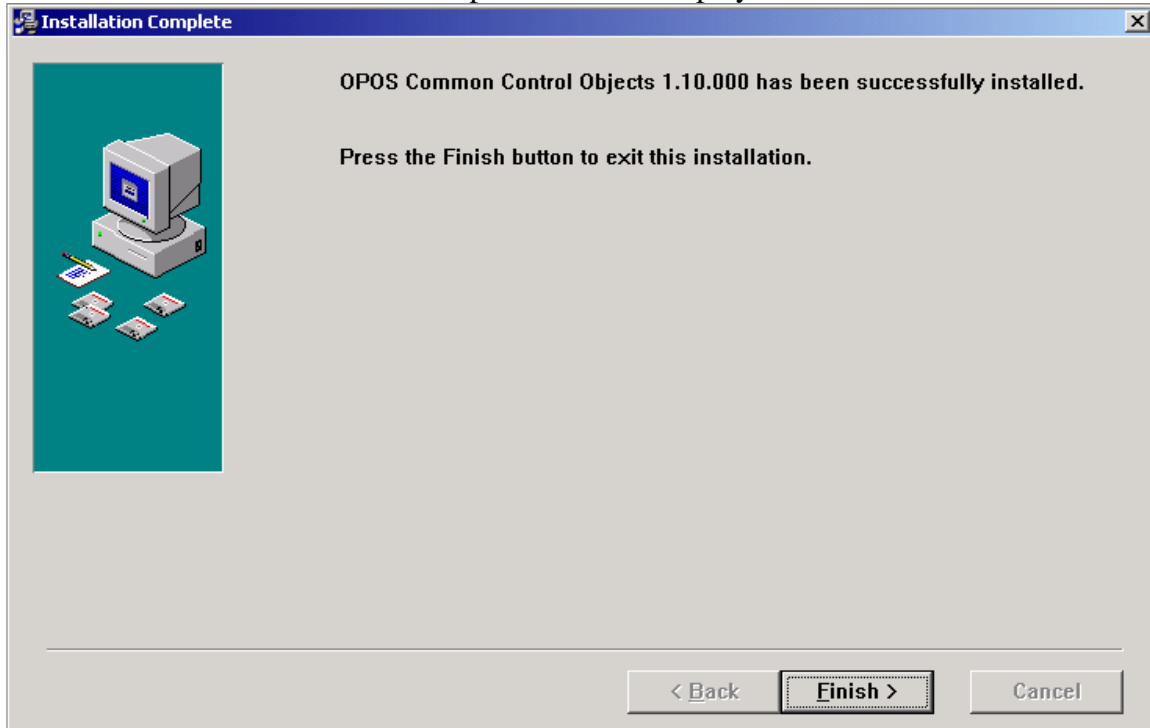
1.1.7. The Start Installation screen appears. Select Next.



1.1.8. The Installing screen pops up as shown below.



1.1.9. The Installation Complete screen is displayed. Click Finish

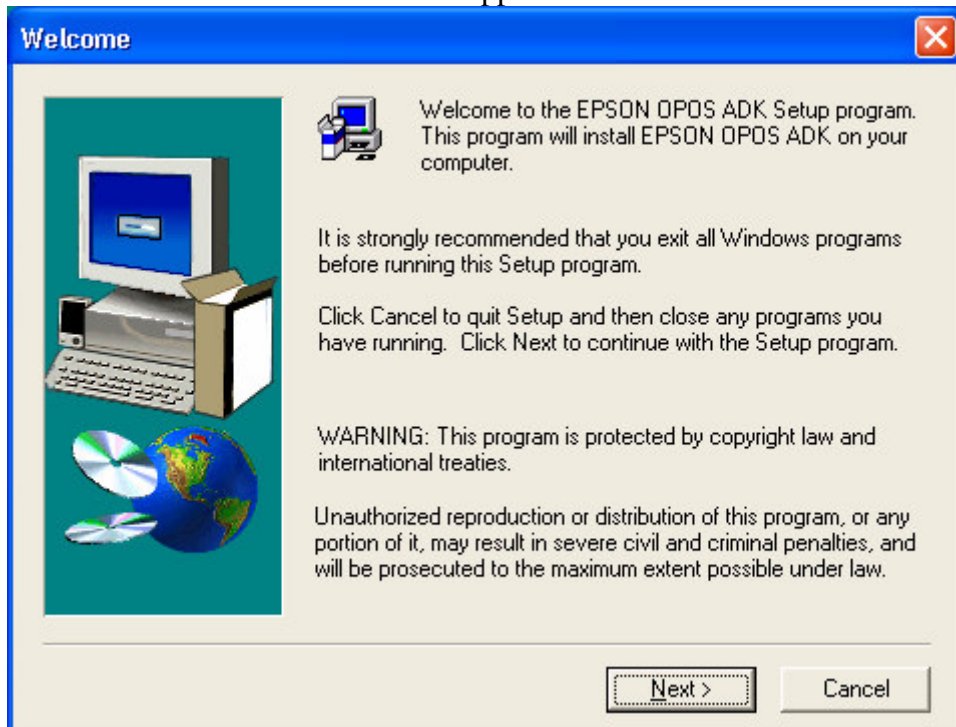


1.1.10. Installation is now complete.

2. Epson OPOS Version 2.50E Installation

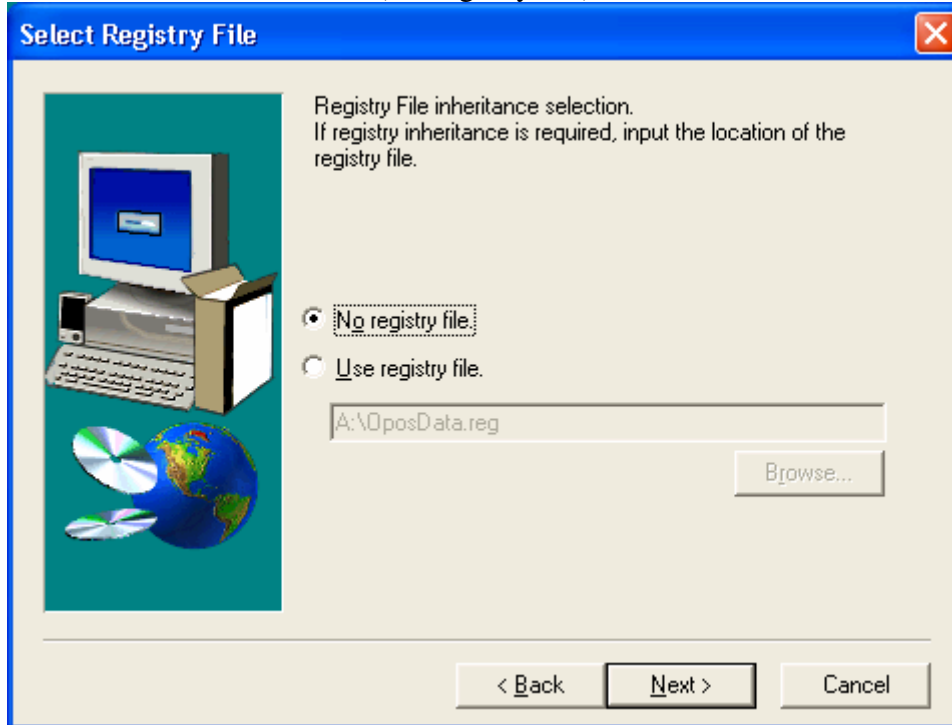
2.1. Installation of Epson OPOS

- 2.1.1. The files OPOSADK250E.exe and OPOSADK250ESP6.exe can be found on the V7.1.2.0-050 distribution CD in the OPOS\Epson folder
- 2.1.2. Extract OPOSADK250E.exe to C:\. This will extract 31 files to the folder C:\OPOSADK
- 2.1.3. Extract OPOSADK250ESP6.exe to C:\. This will extract 24 files to the folder C:\OPOSADK
- 2.1.4. Run setup.exe in C:\OPOSADK\V250\disk1 folder
- 2.1.5. The Welcome screen below appears

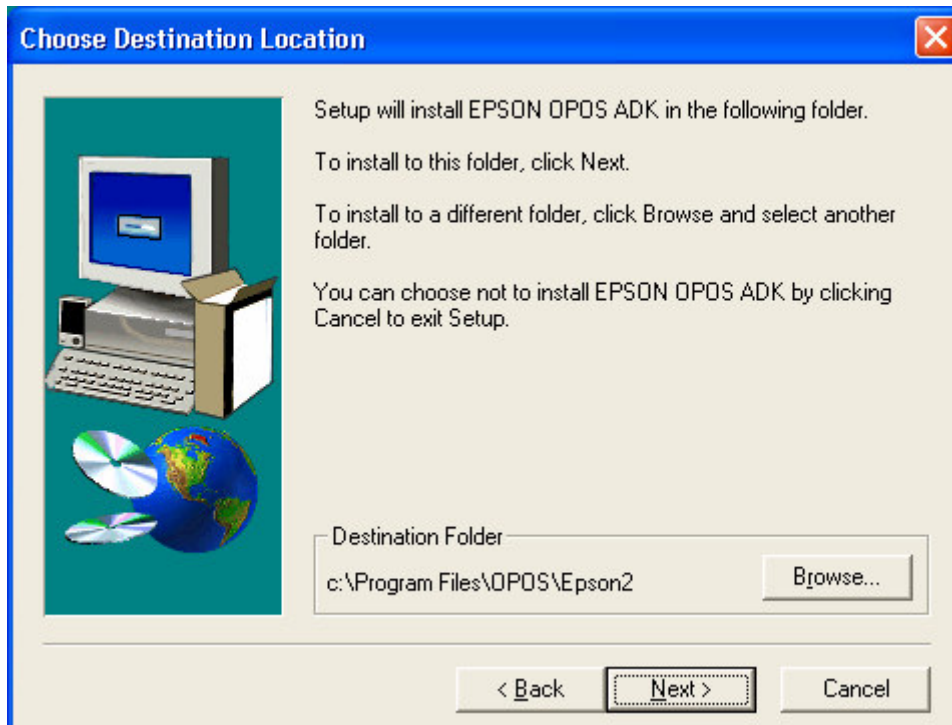


- 2.1.6. Click Next and the licensing screen appears.
Select the first bullet (I agree) and click Next

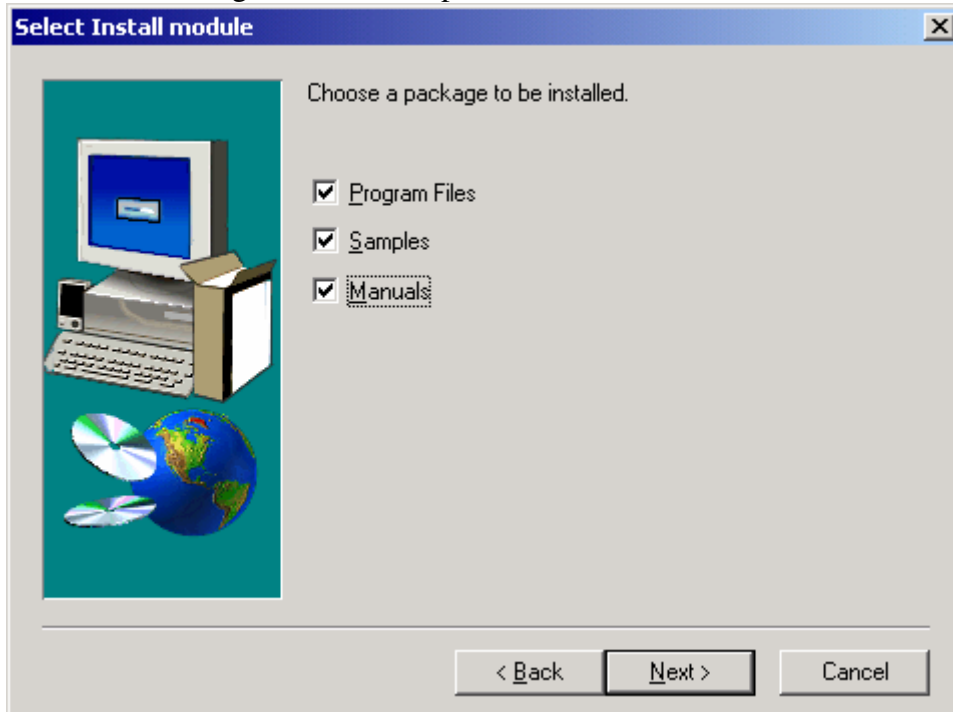
- 2.1.7. The following Select Registry File screen appears
Select the first bullet (No registry file) and click Next



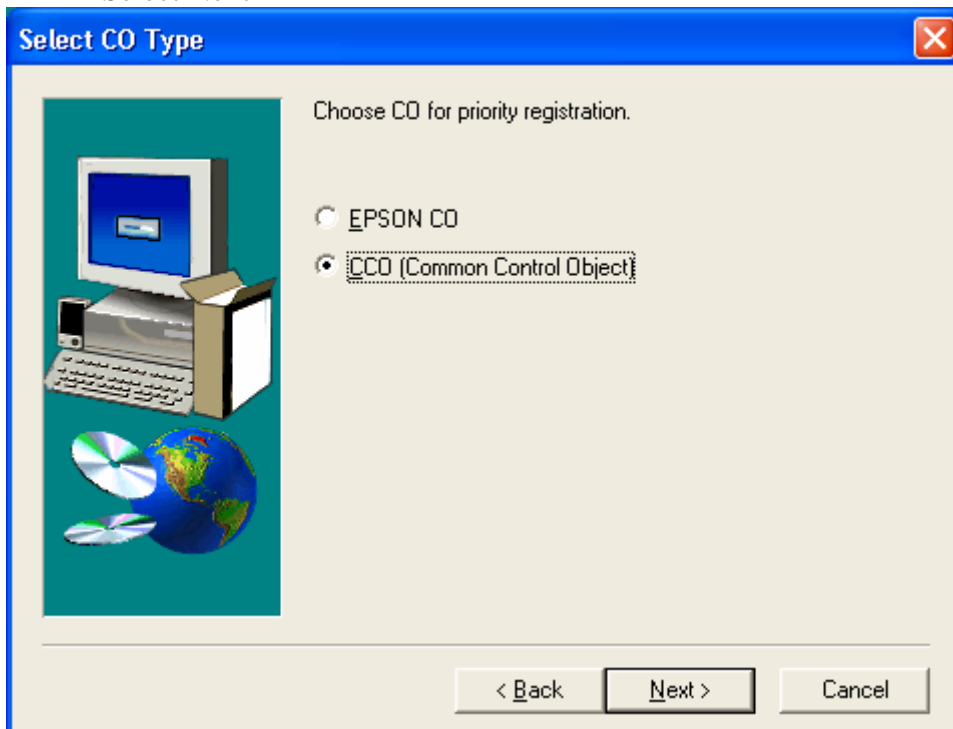
- 2.1.8. The User Information screen appears
Fill in the Name: and Company: information and click Next
- 2.1.9. Choose Destination Location screen appears
Use the default and click Next



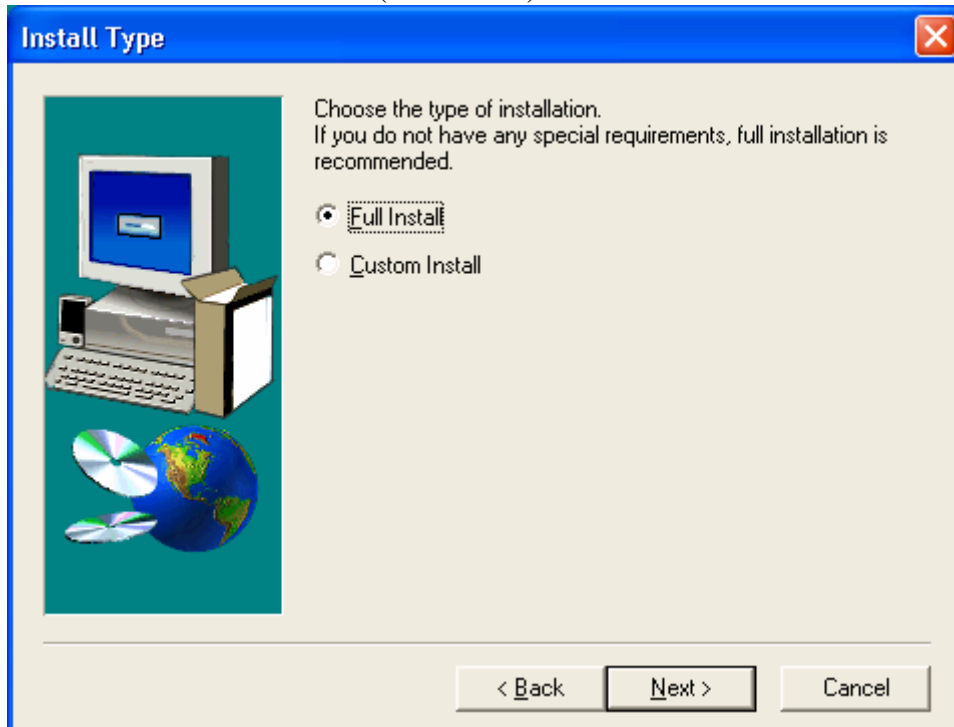
2.1.10. Select Install module screen appears
Select Program Files, Samples and Manuals and click Next



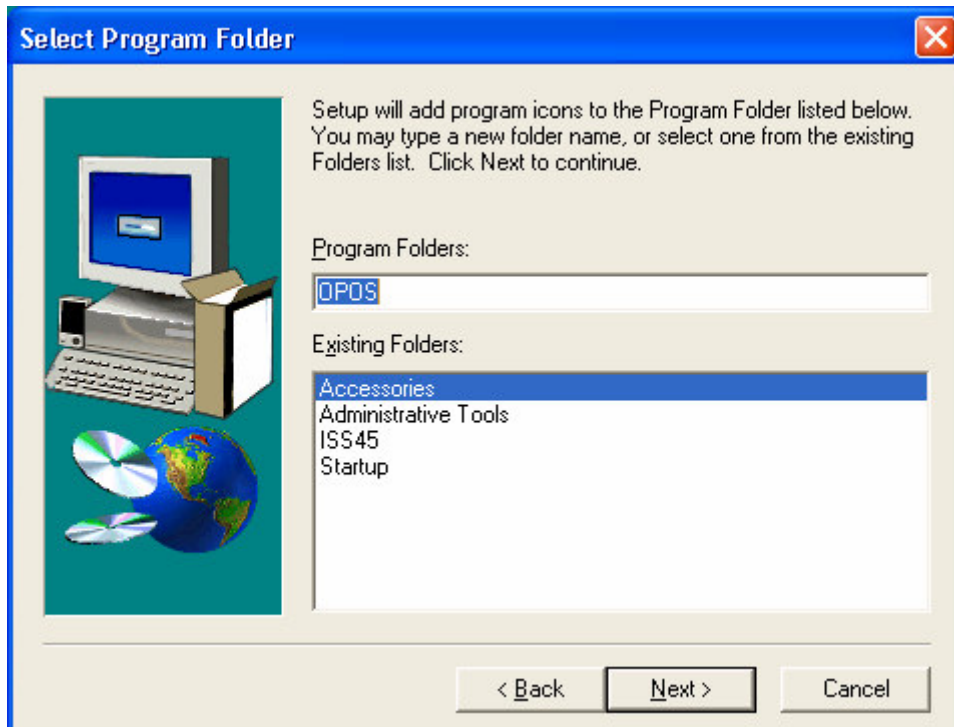
2.1.11. The following Select CO Type screen appears
Select the second bullet (CCO[Common Control Object])
Select Next



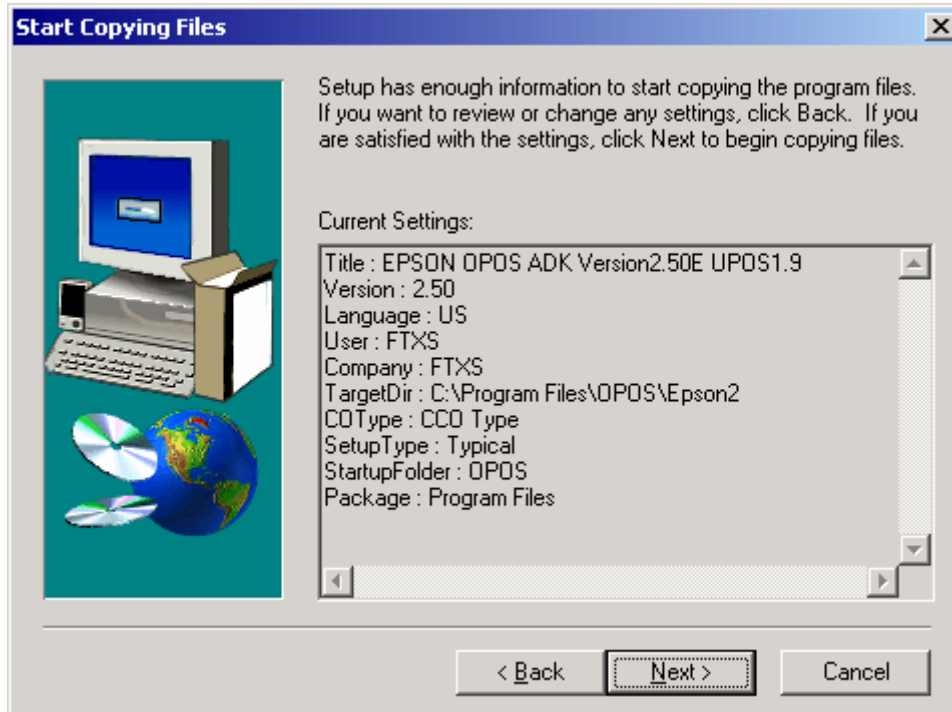
2.1.12. The Install Type screen appears
Select the first bullet (Full Install) and click Next



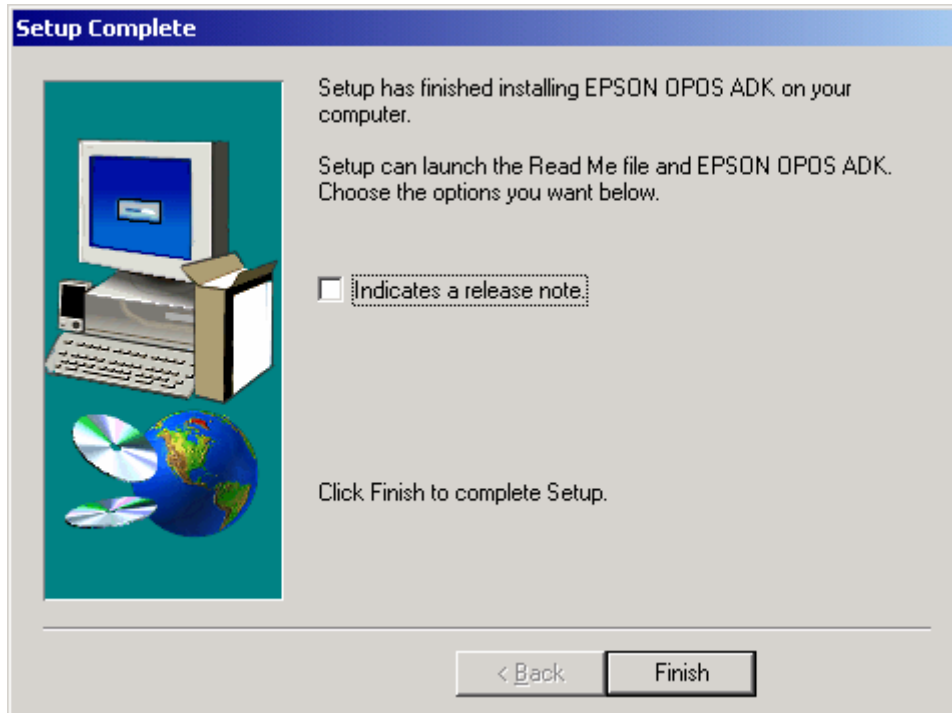
2.1.13. The Select Program Folder screen appears
Use the default and click Next



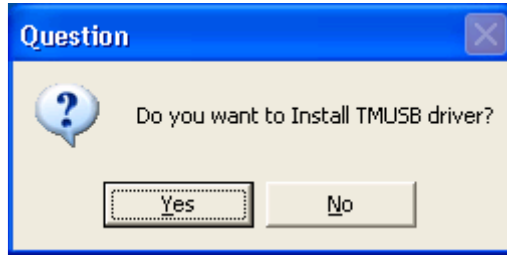
2.1.14. The Start Copying Files screen appears
Click on Next



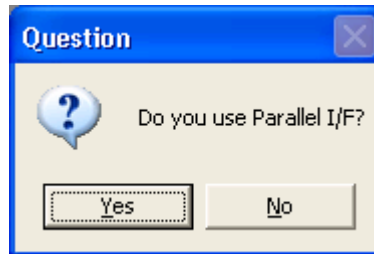
2.1.15. The Setup Complete screen appears
Uncheck "Indicates a release note" and Click Finish



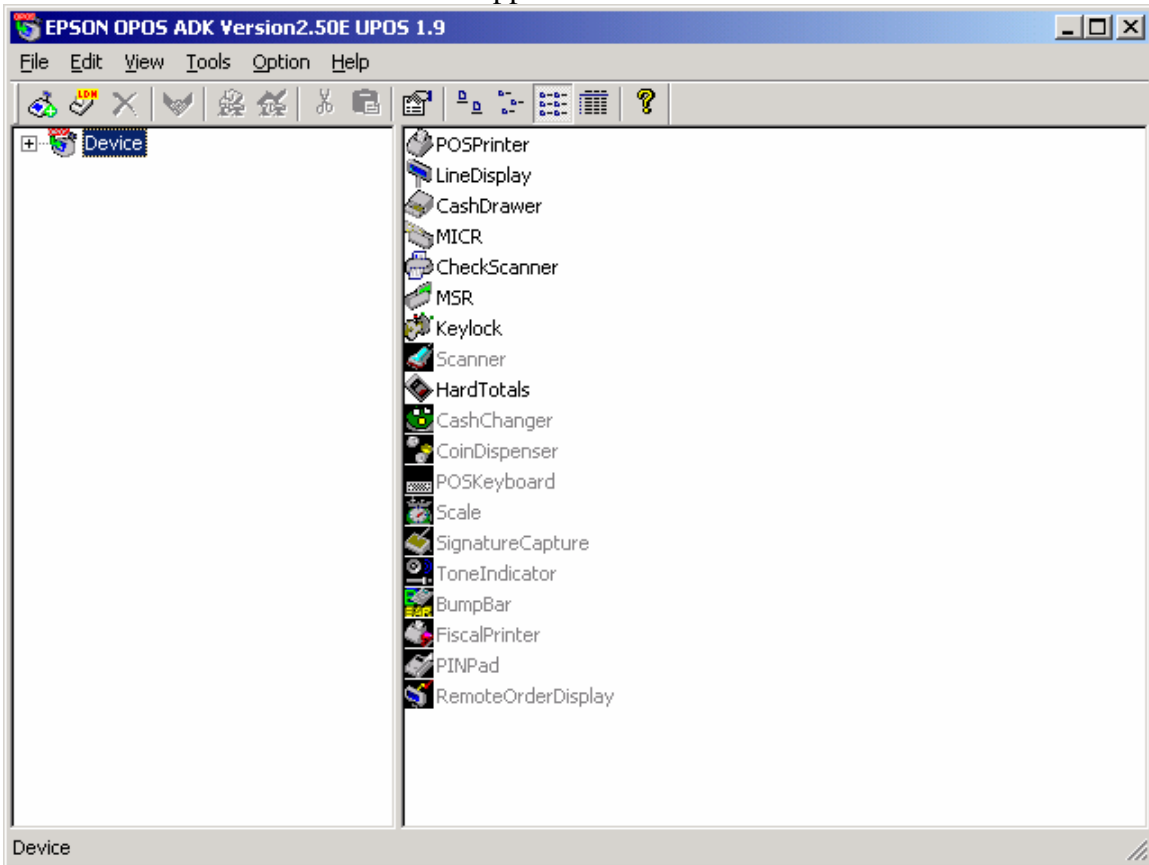
2.1.16. Question screen appears (Do you want to Install TMUSB Driver?)
Click Yes



2.1.17. Question screen appears (Do you use Parallel I/F?)
Click No



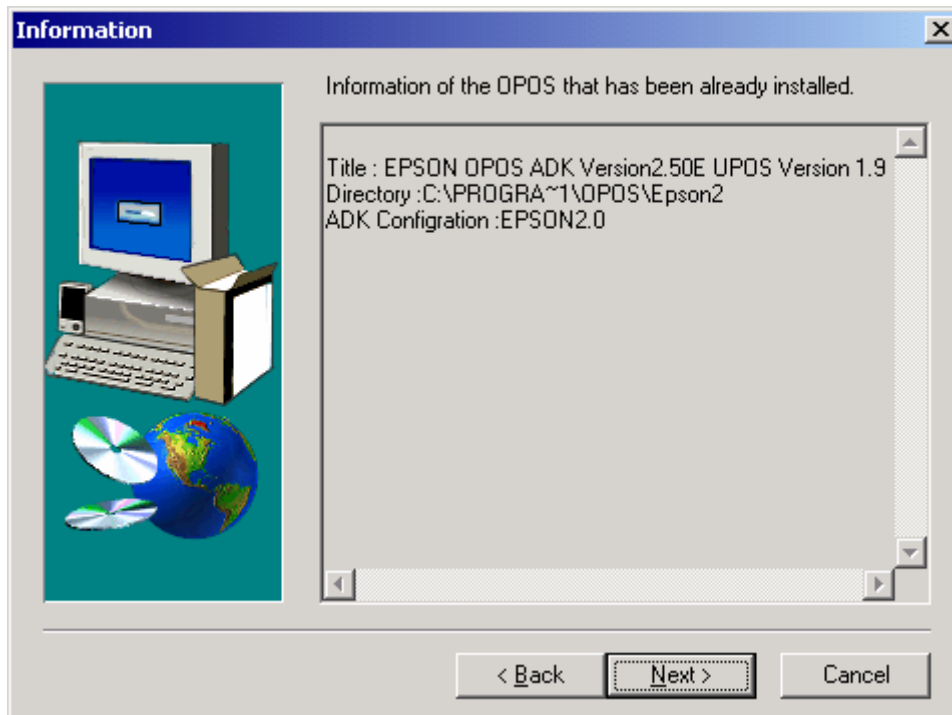
2.1.18. OPOS Device Screen appears



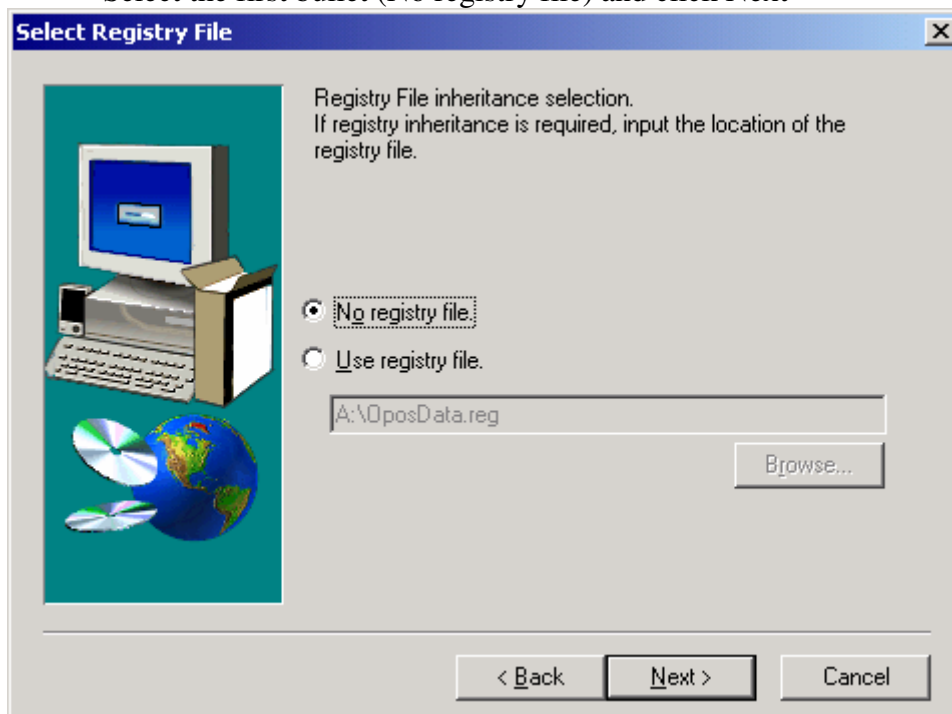
- 2.1.19. Select (File | Exit) to close this screen
- 2.1.20. Apply Epson's Service Pack 6 by Running
C:\OPOSADK\V250e\SP6\disk1\setup.exe
- 2.1.21. The Welcome screen below appears



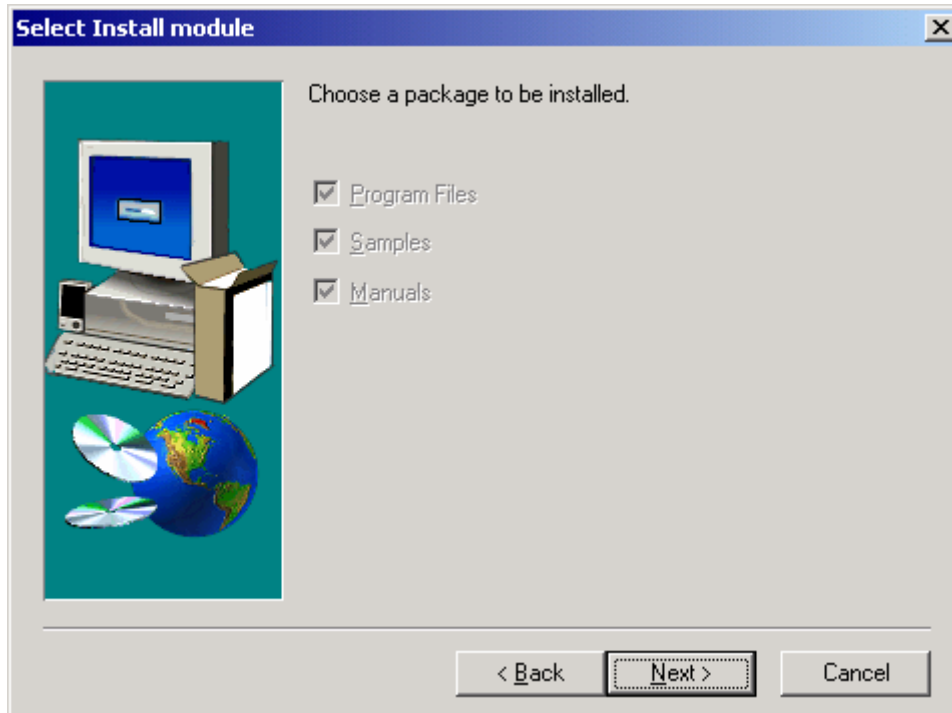
- 2.1.22. Click Next and the licensing screen appears.
Select the first bullet (I agree) and click Next
- 2.1.23. The following Information screen appears
Click Next



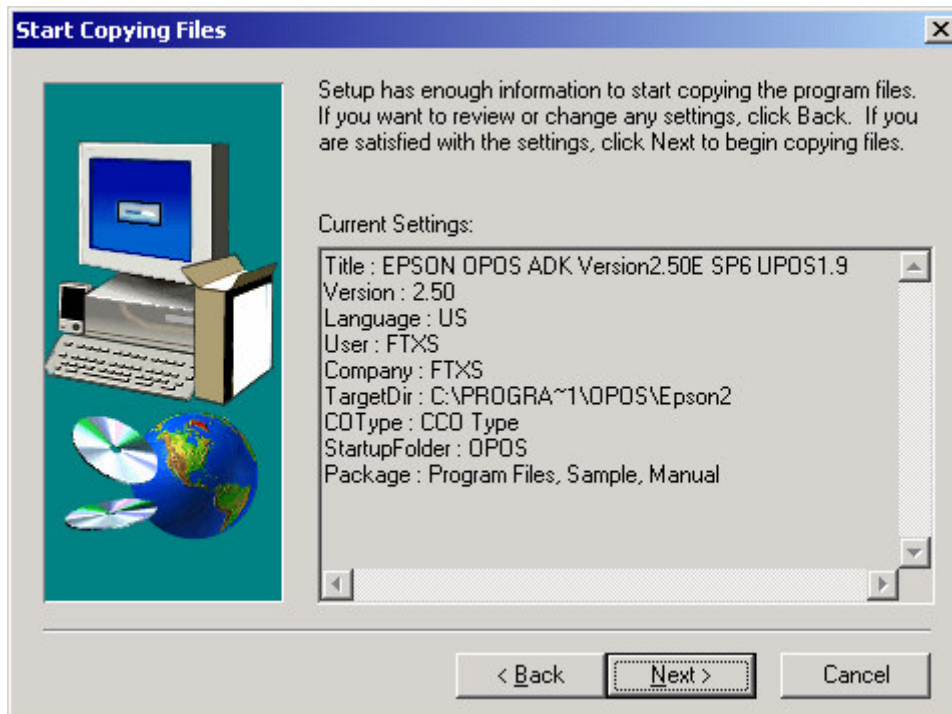
2.1.24. The following Select Registry File screen appears
Select the first bullet (No registry file) and click Next



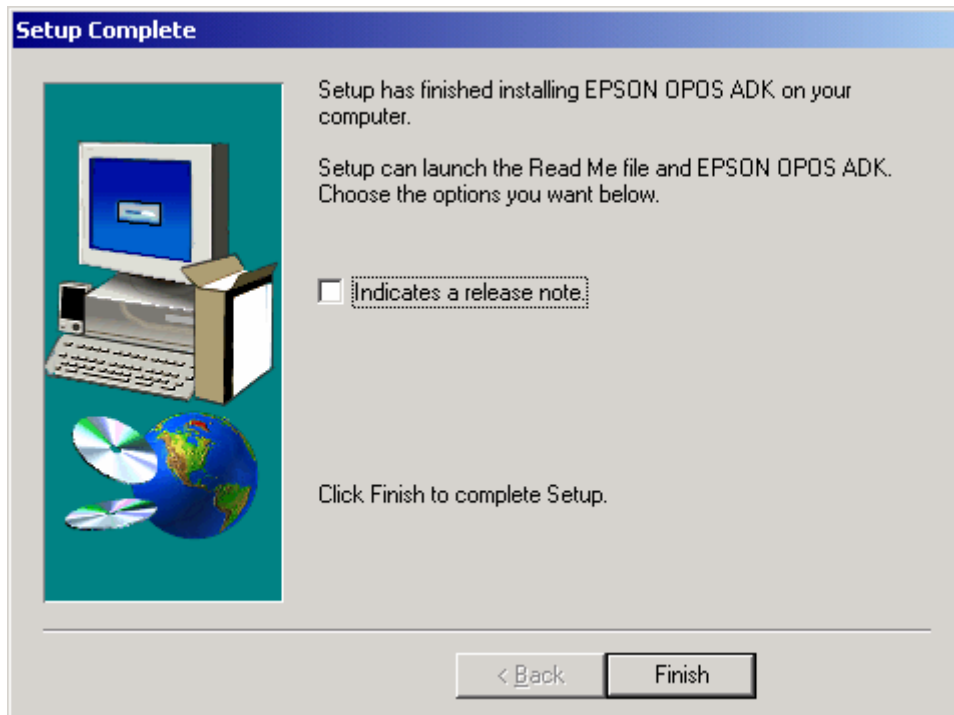
2.1.25. Select Install module screen appears
Click Next



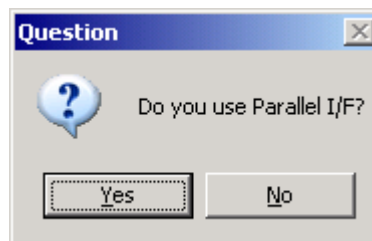
2.1.26. The Start Copying Files screen appears
Click on Next



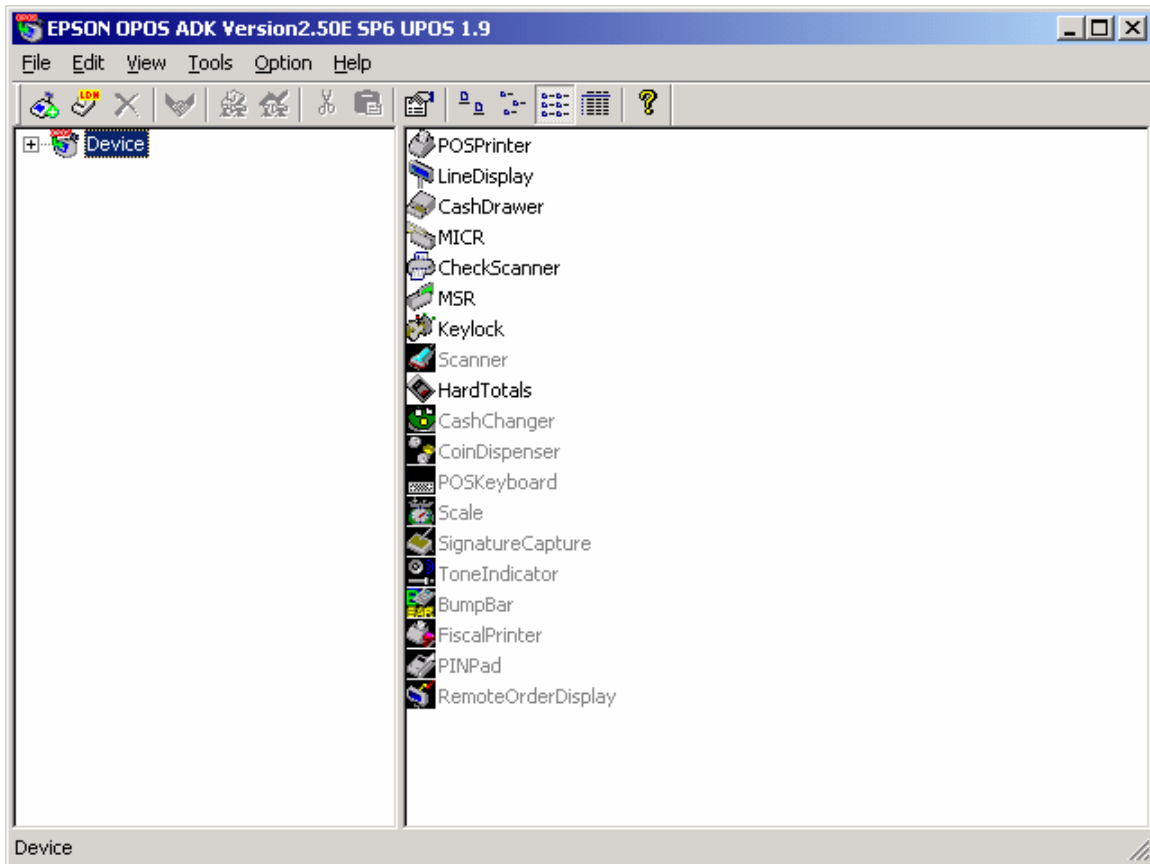
2.1.27. The Setup Complete screen appears
Uncheck "Indicates a release note" and Click Finish



2.1.28. Question screen appears (Do you use Parallel I/F?)
Click No



2.1.29. OPOS Device Screen appears



2.2. Epson USB Device Setup

2.2.1. Epson USB Printer Device

- 2.2.1.1. Add the Epson Printer, select the device name, select detailed model and add new LDN (See the following two screens)

Note: The LDN is user definable but must be the same name used in the ISS45 configuration for the OPOS device

This document chooses the following names as a reference.to the type of Epson Printer being used.

The names below refer to the printer model and connection.

TM-H6000, TM-H6000II or TM-H6000III for RS232 connected printer and TM-H6000IIU or TM-H6000IIIU for USB connected printer

Add New Device [Select DeviceNameKey] ✖

Add New Device

Select <u>D</u> evice Name	Select detailed <u>m</u> odel.
TM-H6000II	TM-H6000IIU
<input type="checkbox"/> Display Ver1.xx	<input checked="" type="checkbox"/> Display Ver2.xx
Used Port	
USB	
Device Description	
EPSON TM-H6000IIU POS Printer	
INF File Name.	
c:\PROGRA~1\OPOS\Epson2\PpH6k2.INF	Browse...

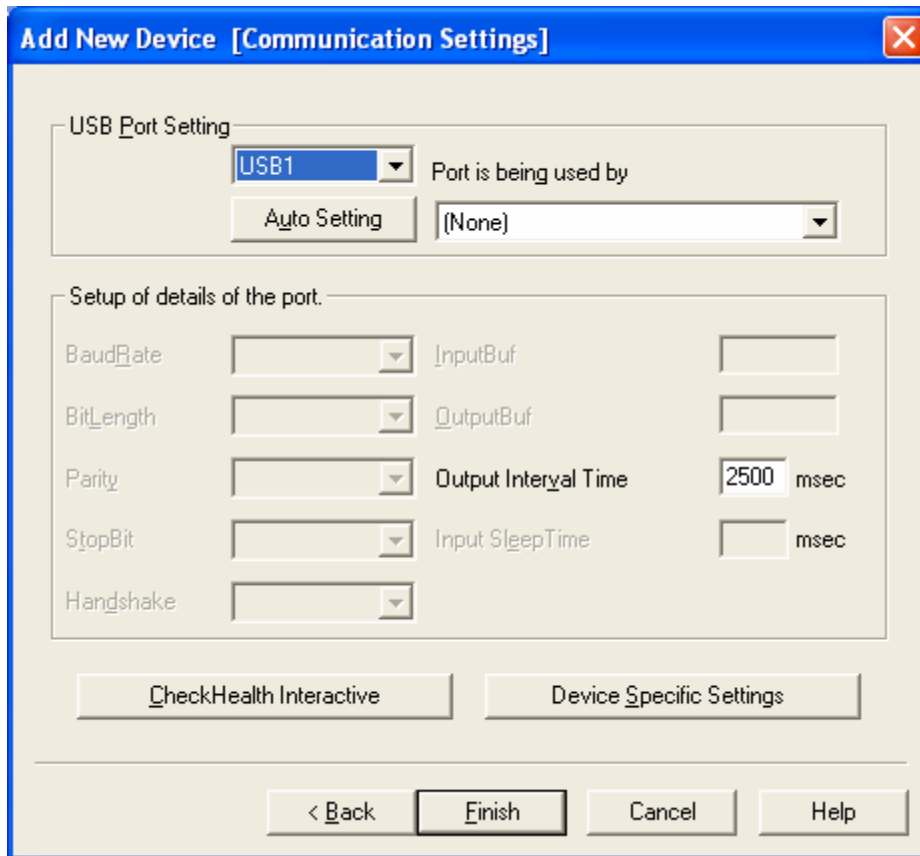
Add New LDN

Set up a logical device name if necessary.

- * A logical device name isn't indispensable.
- A logical device name isn't set up in the case as the blank.
- And, a logical device name can be set up even later.

TM-H6000IIU

< Back Next > Cancel Help

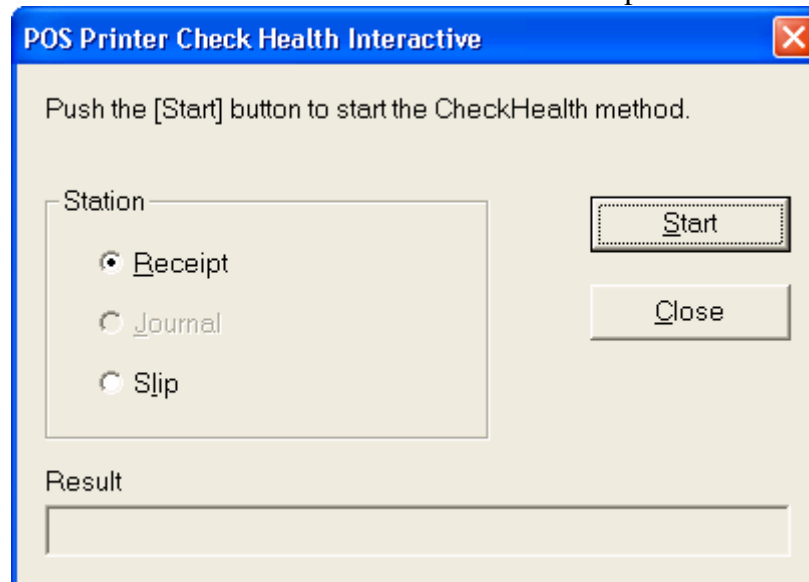


2.2.1.2. Click Auto Setting to located the USB connection for the printer.

2.2.1.2.1. Read the message and click OK

2.2.1.2.2. Click OK to the USB port that was found

2.2.1.3. Run CheckHealth Interactive to test the printer



2.2.2. Epson USB MICR Device

2.2.2.1. Add the Epson MICR, select the device name, select detailed model and add new LDN (See the following two screens)

Note: The LDN is user definable but must be the same name used in the ISS45 configuration for the OPOS device

This document chooses the following names as a reference.to the type of Epson Printer being used. The names below refer to the printer model and connection.

TM-H6000, TM-H6000II or TM-H6000III for RS232 connected printer and TM-H6000IIU or TM-H6000IIIU for USB connected printer

Add New Device [Select DeviceNameKey]

Add New Device

Select Device Name: TM-H6000II

Select detailed model: TM-H6000IIU

Display Ver1.xx Display Ver2.xx

Used Port: USB

Device Description: EPSON TM-H6000IIU MICR

INF File Name: c:\PROGRA~1\OPOS\Epson2\MiTmH6k2.inf

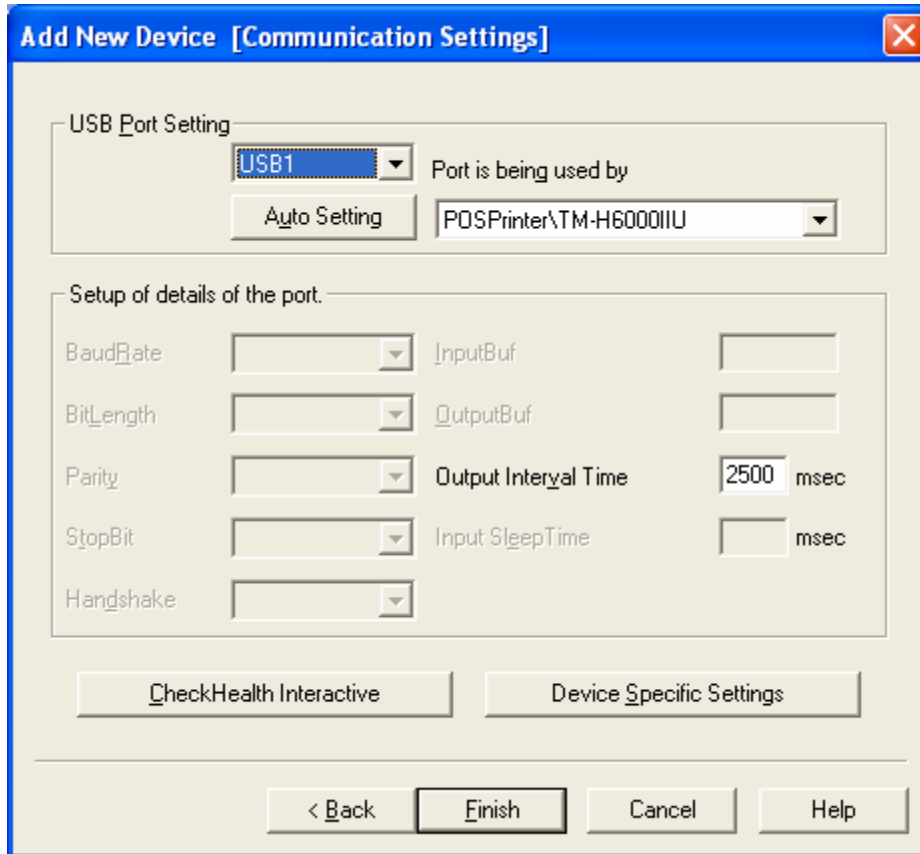
Add New LDN

Set up a logical device name if necessary.

* A logical device name isn't indispensable.
A logical device name isn't set up in the case as the blank.
And, a logical device name can be set up even later.

TM-H6000IIU

< Back Next > Cancel Help



2.2.2.2. Click Auto Setting to located the USB connection for the printer.

2.2.2.2.1. Read the message and click OK

2.2.2.2.2. Click OK to the USB port that was found

2.2.2.3. Run CheckHealth Interactive to test the MICR

2.2.3. Epson USB Check Scanner Device (Currently in V8 only and correct Epson printer to support this feature)

2.2.3.1. Add the Epson Check Scanner, select the device name, select detailed model and add new LDN (See the following two screens)

Note: The LDN is user definable but must be the same name used in the ISS45 configuration for the OPOS device

This document chooses the following names as a reference.to the type of Epson Printer being used. The names below refer to the printer model and connection.

TM-H6000, TM-H6000II or TM-H6000III for RS232 connected printer and TM-H6000IIU or TM-H6000IIIU for USB connected printer

Add New Device [Select DeviceNameKey] ✖

Add New Device

Select <u>D</u> evice Name	Select detailed <u>m</u> odel.
<input type="text" value="TM-H6000II"/>	<input type="text" value="TM-H6000IIU"/>
<input type="checkbox"/> Display Ver1.xx	<input checked="" type="checkbox"/> Display Ver2.xx
Used Port	
<input type="text" value="USB"/>	

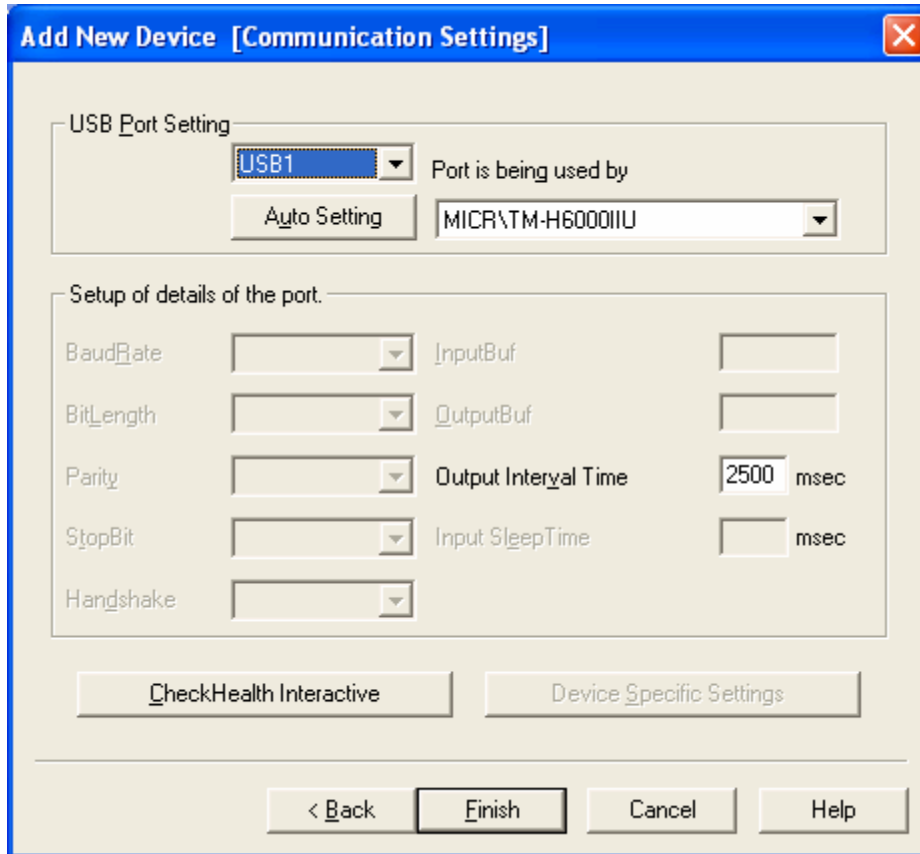
Device Description

INF File Name.

Add New LDN

Set up a logical device name if necessary.

* A logical device name isn't indispensable.
A logical device name isn't set up in the case as the blank.
And, a logical device name can be set up even later.



2.2.3.2. Click Auto Setting to located the USB connection for the printer.

2.2.3.2.1. Read the message and click OK

2.2.3.2.2. Click OK to the USB port that was found

2.2.3.3. Run CheckHealth Interactive to test the check scanner

2.2.4. Cash Drawer connected to Epson USB Printer

2.2.4.1. Add the Cash Drawer, select the device name, select detailed model and add new LDN (See the following two screens)

Note: The LDN is user definable but must be the same name used in the ISS45 configuration for the OPOS device

This document chooses the following names as a reference.to the type of Epson Printer being used. The names below refer to the printer model and connection.

TM-H6000, TM-H6000II or TM-H6000III for RS232 connected printer and TM-H6000IU or TM-H6000IIU for USB connected printer

Add New Device [Select DeviceNameKey]

Add New Device

Select Device Name: Standard Select detailed model: StandardU

Display Ver1.xx Display Ver2.xx Used Port: USB

Device Description: Standard Cash Drawer(USB) for EPSON TM series

INF File Name: C:\PROGRA~1\OPOS\Epson2\CrStand.inf Browse...

Add New LDN

Set up a logical device name if necessary.

* A logical device name isn't indispensable.
A logical device name isn't set up in the case as the blank.
And, a logical device name can be set up even later.

TM-H6000IIIU

< Back Next > Cancel Help

Add New Device [Communication Settings]

USB Port Settings

USB1 Port is being used by: (None)

Auto Settings

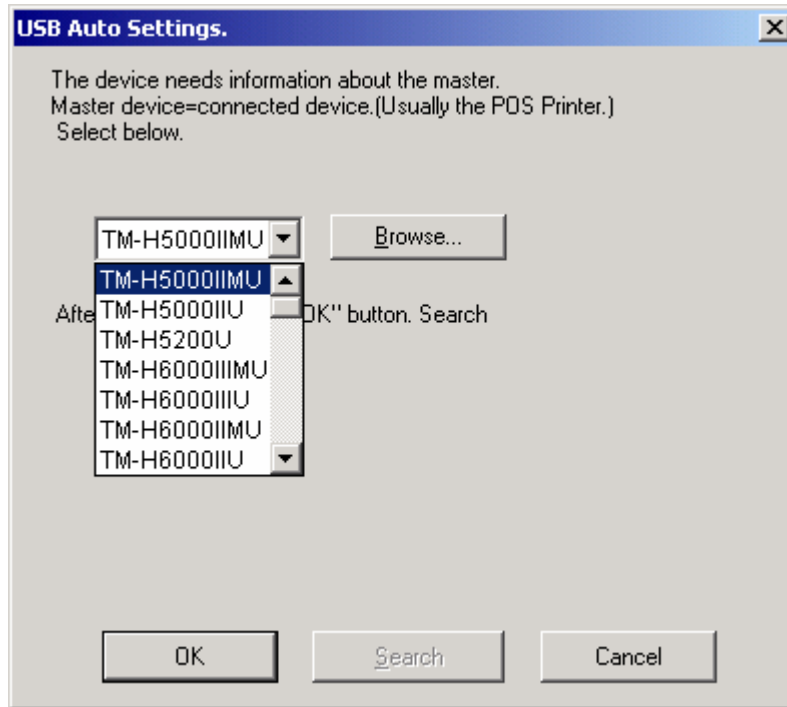
Setup of details of the port.

BaudRate	[]	InputBuf	[]
BitLength	[]	OutputBuf	[]
Parity	[]	Output Interval Time	2500 msec
StopBit	[]	Input SleepTime	[] msec
Handshake	[]		

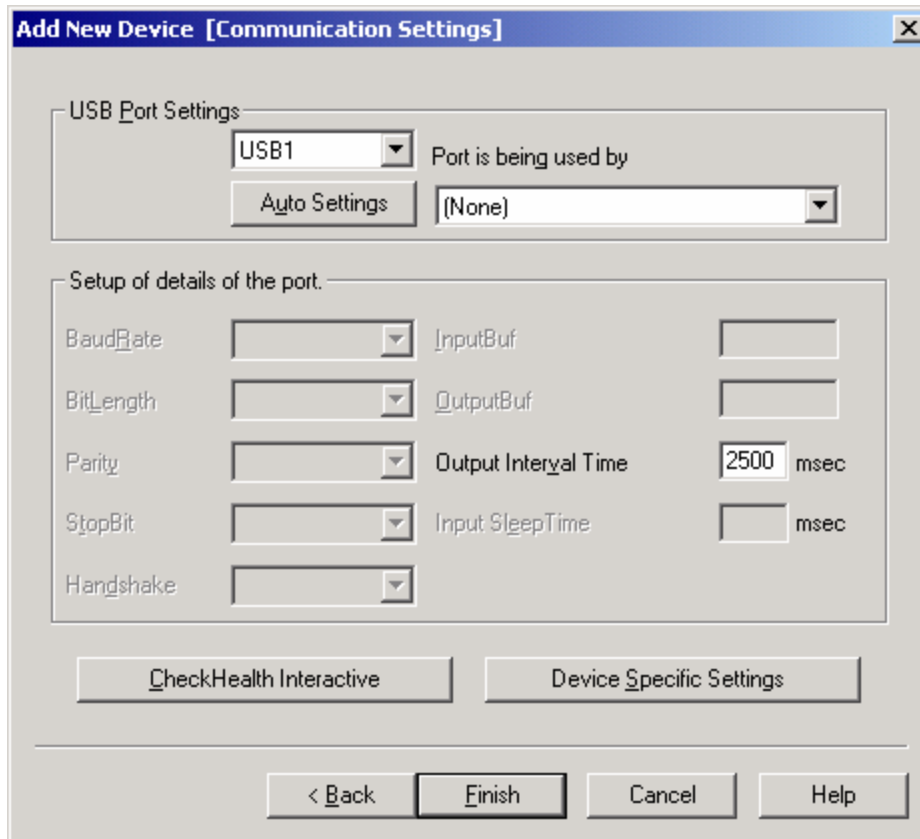
CheckHealth Interactive Device Specific Settings

< Back Finish Cancel Help

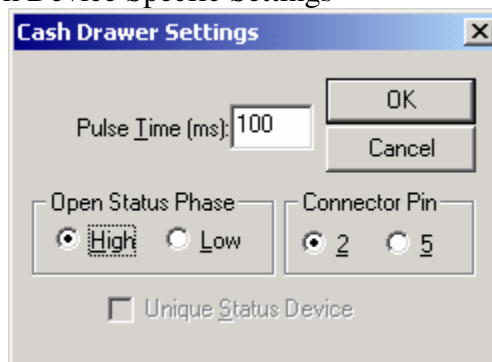
- 2.2.4.2. Change Output Interval Time from 500 to 2500 msec to match the printer
- 2.2.4.3. Click Auto Setting to located the USB connection for the printer.
 - 2.2.4.3.1. Read the message and click OK and you will get the following screen



- 2.2.4.3.2. Select the printer that the cash drawer is connected to and click OK
- 2.2.4.3.3. Click OK to the USB port that was found



2.2.4.4. Click Device Specific Settings



2.2.4.5. Change Open Status Phase from Low to High and click OK

2.2.4.6. Run CheckHealth Interactive to test the cash drawer

2.3. Epson RS232 Device Setup

2.3.1. Epson RS232 Printer Device

2.3.1.1. Add the Epson Printer, select the device name, select detailed model and add new LDN (See the following two screens)

Note: The LDN is user definable but must be the same name used in the ISS45 configuration for the OPOS device

This document chooses the following names as a reference to the type of Epson Printer being used. The names below refer to the printer model and connection.

TM-H6000, TM-H6000II or TM-H6000III for RS232 connected printer and TM-H6000IIU or TM-H6000IIIU for USB connected printer

Add New Device [Select DeviceNameKey]

Add New Device

Select Device Name: TM-H6000II

Select detailed model: TM-H6000II

Display Ver1.xx Display Ver2.xx

Used Port: COM

Device Description: EPSON TM-H6000II POS Printer

INF File Name: c:\PROGRAM~1\OPOS\Epson2\PpH6k2.INF

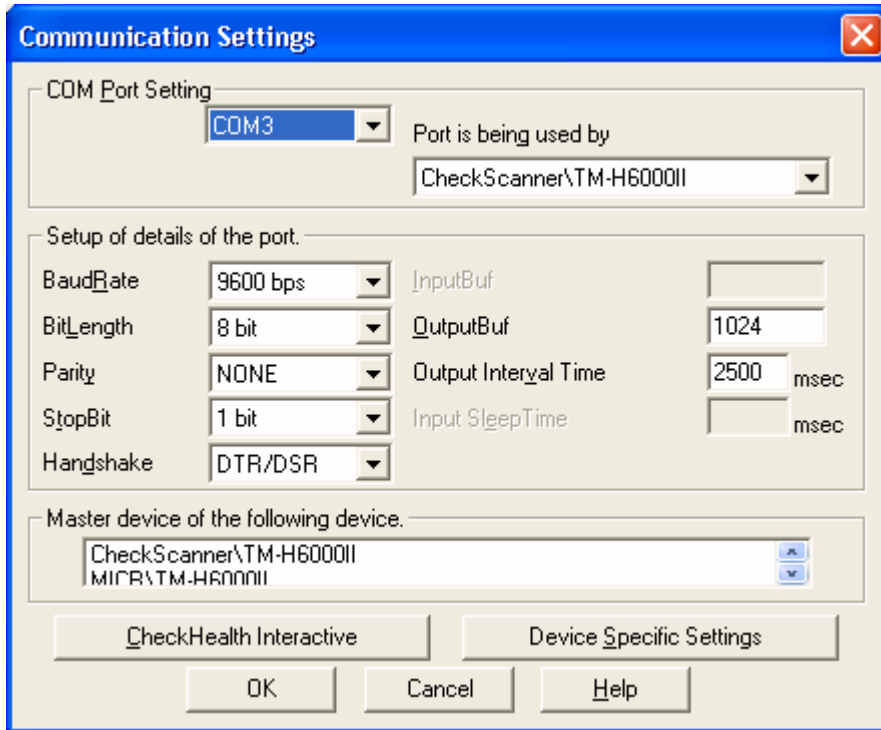
Add New LDN

Set up a logical device name if necessary.

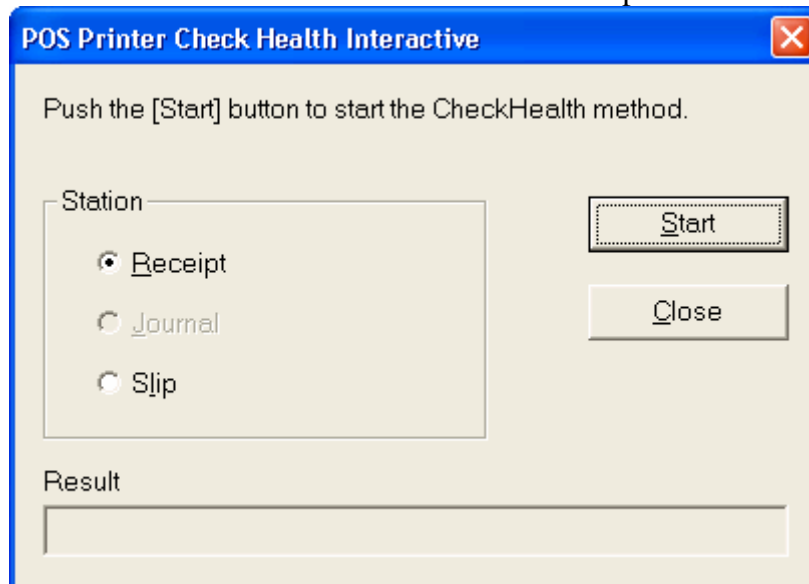
* A logical device name isn't indispensable.
A logical device name isn't set up in the case as the blank.
And, a logical device name can be set up even later.

TM-H6000II

< Back Next > Cancel Help



2.3.1.2. Run CheckHealth Interactive to test the printer



2.3.2. Epson RS232 MICR Device

2.3.2.1. Add the Epson MICR, select the device name, select detailed model and add new LDN (See the following two screens)

Note: The LDN is user definable but must be the same name used in the ISS45 configuration for the OPOS device

This document chooses the following names as a reference to the type of Epson Printer being used. The names below refer to the printer model and connection.

TM-H6000, TM-H6000II or TM-H6000III for RS232 connected printer and TM-H6000IIU or TM-H6000IIIU for USB connected printer

Add New Device [Select DeviceNameKey]

Add New Device

Select Device Name: TM-H6000II

Select detailed model: TM-H6000II

Display Ver1.xx Display Ver2.xx

Used Port: COM

Device Description: EPSON TM-H6000II MICR

INF File Name: c:\PROGRAM~1\OPOS\Epson2\MiTMH6k2.inf Browse...

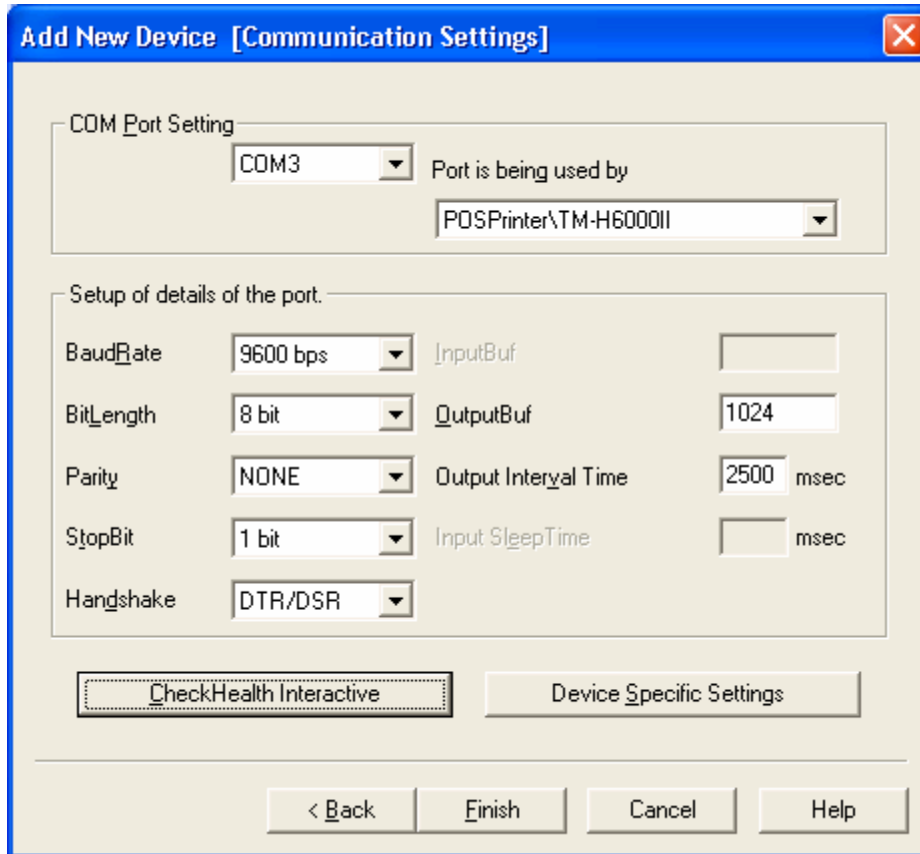
Add New LDN

Set up a logical device name if necessary.

* A logical device name isn't indispensable.
A logical device name isn't set up in the case as the blank.
And, a logical device name can be set up even later.

TM-H6000II

< Back Next > Cancel Help



2.3.2.2. Run CheckHealth Interactive to test the MICR

2.3.3. Epson RS232 Check Scanner Device (Currently in V8 only and correct Epson printer to support this feature)

2.3.3.1. Add the Epson Check Scanner, select the device name, select detailed model and add new LDN (See the following two screens)

Note: The LDN is user definable but must be the same name used in the ISS45 configuration for the OPOS device

This document chooses the following names as a reference.to the type of Epson Printer being used. The names below refer to the printer model and connection.

TM-H6000, TM-H6000II or TM-H6000III for RS232 connected printer and TM-H6000IIU or TM-H6000IIIU for USB connected printer

Add New Device [Select DeviceNameKey] ✖

Add New Device

Select <u>D</u> evice Name	Select detailed <u>m</u> odel.
<input type="text" value="TM-H6000II"/>	<input type="text" value="TM-H6000II"/>
<input type="checkbox"/> Display Ver1.xx	<input checked="" type="checkbox"/> Display Ver2.xx
Used Port	
<input type="text" value="COM"/>	

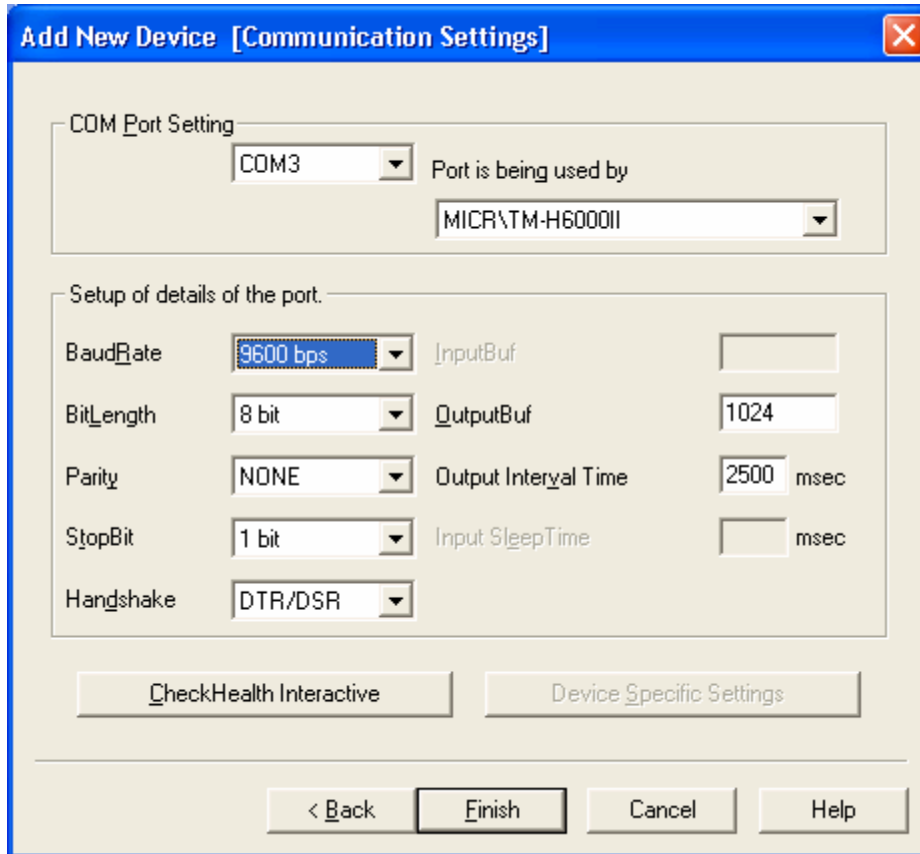
Device Description

INF File Name.

Add New LDN

Set up a logical device name if necessary.

- * A logical device name isn't indispensable.
A logical device name isn't set up in the case as the blank.
And, a logical device name can be set up even later.



2.3.3.2. Run CheckHealth Interactive to test the check scanner

2.3.4. Cash Drawer connected to Epson RS232 Printer

2.3.4.1. Add the Cash Drawer, select the device name, select detailed model and add new LDN (See the following two screens)

Note: The LDN is user definable but must be the same name used in the ISS45 configuration for the OPOS device

This document chooses the following names as a reference.to the type of Epson Printer being used. The names below refer to the printer model and connection.

TM-H6000, TM-H6000II or TM-H6000III for RS232 connected printer and TM-H6000IIU or TM-H6000IIIU for USB connected printer

Add New Device [Select DeviceNameKey]

Add New Device

Select Device Name: Standard Select detailed model: Standard

Display Ver1.xx Display Ver2.xx Used Port: COM

Device Description: Standard Cash Drawer(USB) for EPSON TM series

INF File Name: C:\PROGRA~1\OPOS\Epson2\CrStand.inf Browse...

Add New LDN

Set up a logical device name if necessary.

* A logical device name isn't indispensable.
A logical device name isn't set up in the case as the blank.
And, a logical device name can be set up even later.

TM-H6000II

< Back Next > Cancel Help

Add New Device [Communication Settings]

COM Port Setting

COM3 Port is being used by: POSPrinter\TM-H6000II

Setup of details of the port.

BaudRate: 9600 bps InputBuf: []

BitLength: 8 bit OutputBuf: 1024

Parity: NONE Output Interyal Time: 2500 msec

StopBit: 1 bit Input SleepTime: [] msec

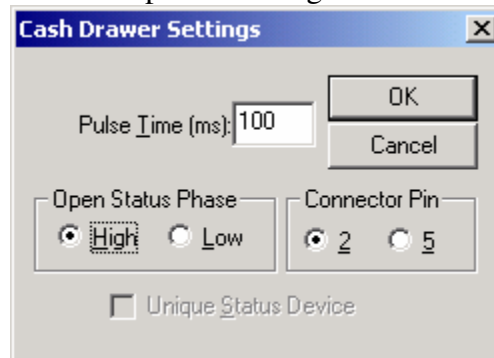
Handshake: DTR/DSR

CheckHealth Interactive Device Specific Settings

< Back Finish Cancel Help

2.3.4.2. Change Output Interval Time from 500 to 2500 msec to match the printer

2.3.4.3. Click Device Specific Settings



2.3.4.4. Change Open Status Phase from Low to High and click OK

2.3.4.5. Run CheckHealth Interactive to test the cash drawer

3. Configuration Settings for Epson OPOS in V7

3.1. POST Configuration Setup

3.1.1. Printer and MICR setup

3.1.1.1. On POST Configuration Screen 1, Select None for Port, check the box for OPOS, check the box for MICR if used and optionally check the box to Enable Check Flip.



3.1.2. ISS45 V7 WinPOS.ini setup

3.1.2.1. Add the following lines in the WinPOS.ini file for the OPOS printer and OPOS MICR

Note: The OPOS name is user definable but must be the same name used in LDN setup earlier for the OPOS device

This document chooses the following names as a reference to the type of Epson Printer being used. The names below refer to the printer model and connection.

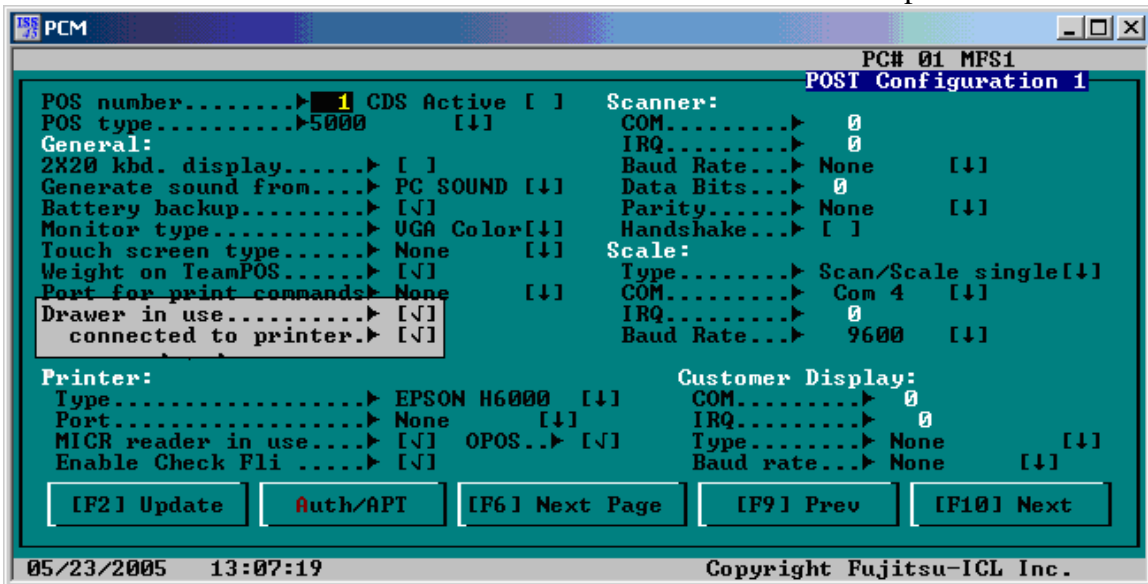
TM-H6000, TM-H6000II or TM-H6000III for RS232 connected printer and TM-H6000IIU or TM-H6000IIIU for USB connected printer

- 3.1.2.2. DefaultPrinterName=TM-H6000IIU
- 3.1.2.3. OposMicr=Yes
- 3.1.2.4. DefaultMicrName=TM-H6000IIU

3.1.3. Cash Drawer Setup

Note: This step is only if the cash drawer is connected to the OPOS Printer

- 3.1.3.1. Check Drawer in use and check connected to the printer



3.1.4. ISS45 V7 WinPOS.ini setup

- 3.1.4.1. Add the following lines in the WinPOS.ini file if you are using a cash drawer connected to the OPOS printer
- 3.1.4.2. OposDrawer=Yes
- 3.1.4.3. DefaultDrawerName=TM-H6000IIU

Note: Add the following line to the WinPOS.ini file if the cash drawer is working opposite to what it should be (EX: open is closed and closed is open).

- 3.1.4.4. DrawerNegativeCheck=Yes

4. Configuration Settings for Epson OPOS in V8

NOTE: There is no setup required in the WinPOS.ini file for V8

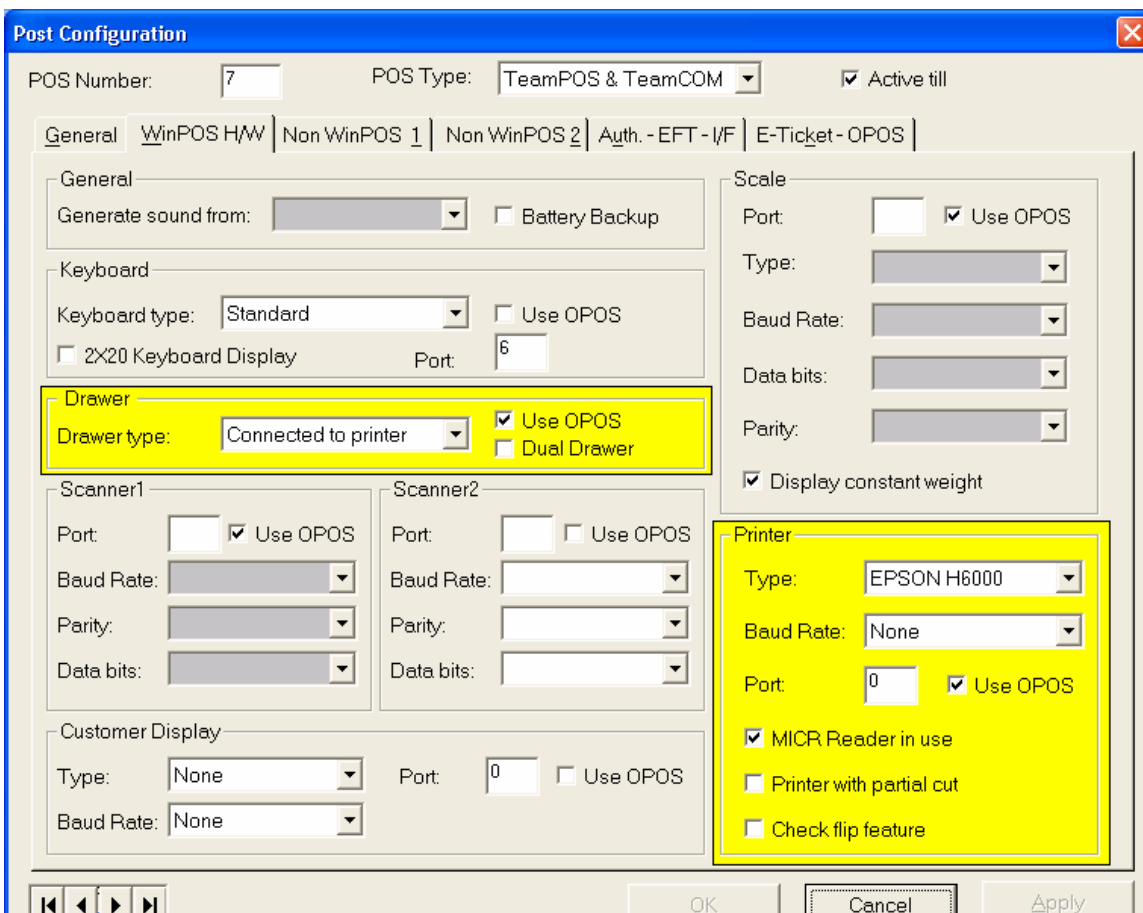
- 4.1. POST Configuration Setup
 - 4.1.1. Printer, MICR and Cash Drawer

WinPOS H/W Tab (See the following screen)

- 4.1.1.1. Printer Type: Epson H6000
- 4.1.1.2. Baud Rate: None
- 4.1.1.3. Port: 0
- 4.1.1.4. Box checked for Use OPOS
- 4.1.1.5. Box checked for MICR Reader in use
- 4.1.1.6. Box optionally checked for Check flip feature

Note: The following applies only if the cash drawer is connected to the Epson printer

- 4.1.1.7. Drawer type Connected to printer and Use OPOS checked



4.1.2. E-Ticket –OPOS (See the following screen)

Note: The OPOS name is user definable but must be the same name used in LDN setup earlier for the OPOS device

This document chooses the following names as a reference.to the type of Epson Printer being used. The names below refer to the printer model and connection.

TM-H6000, TM-H6000II or TM-H6000III for RS232 connected printer and TM-H6000IIU or TM-H6000IIIU for USB connected printer

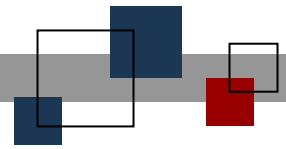
- 4.1.2.1. Fill in the OPOS Printer Driver Name

- 4.1.2.2. Fill in the OPOS MICR Driver Name and check the box Use OPOS MICR
- 4.1.2.3. Fill in the OPOS Check Scanner Driver Name and check the box Use OPOS Check Scanner if your printer supports Scanning the check
- 4.1.2.4. Fill in the OPOS Drawer Driver Name only if the cash drawer is connected to the Epson printer

The screenshot shows the 'Post Configuration' dialog box with the following settings:

- POS Number: 7
- POS Type: TeamPOS & TeamCOM
- Active till:
- General | WinPOS H/W | Non WinPOS 1 | Non WinPOS 2 | Auth. - EFT - I/F | E-Ticket - OPOS
- E-Ticket:
 - E-Ticket Active
 - Virtual POS Number: []
 - Virtual Cashier Number: []
- OPOS:
 - OPOS Printer Driver Name: TM-H6000IU
 - OPOS Line Display Driver Name: []
 - OPOS Drawer Driver Name: TM-H6000IU
 - OPOS Scanner Driver Name: TableScanner
 - OPOS Scale Driver Name: TableScale
 - OPOS MICR Driver Name: TM-H6000IU Use OPOS MICR
 - OPOS MSR Driver Name: [] Use OPOS MSR
 - OPOS Keyboard Driver Name: []
 - OPOS KeyLock Driver Name: [] Use OPOS KeyLock
 - OPOS Coin Dispenser Driver Name: [] Use OPOS Coin Dispenser
 - OPOS Check Scanner Driver Name: TM-H6000IU Use OPOS Check Scanner

- 4.2. Check Imaging Setup (Currently in V8 only and supported Epson printer)
 - 4.2.1. You need to check the box for Scan Tender Image in Tender Maintenance | General Parameters Tab



© StoreNext Retail Technologies LLC 2007

StoreNext Retail Technologies LLC endeavors to ensure that the information in this document is correct and fairly stated but does not accept liability for any error or omission.

The development of StoreNext products and services is continuous and published information may not be up to date. It is important to check the current position with StoreNext. This document is not part of a contract or license save insofar as may be expressly agreed.