

- 
- A decorative horizontal line with a grey background, overlaid with several overlapping squares in dark blue, medium blue, light blue, red, and white.
- *Acer Altos G320 Installation Guide*
  - *for ISS45 V8 with*
  - *Windows 2003 Server*
  - *SQL 2000 with*
  - *SP1 Re-Installation*



## Acer Altos G320 Installation Guide

<b>Date of Issue</b>	<b>Product Identification Number</b>	<b>Part Number</b>	<b>Brief Description</b>
March 2006	N/A	89000284	Initial Release
August 2006	N/A	89000315	Win Server R2

**©Copyright StoreNext Retail Technologies LLC 1995-2006  
All rights reserved**

This publication is protected by federal copyright law. No part of this publication may be reproduced or transmitted into any human or computer language in any form or by any means, stored in a retrieval system, transmitted, redistributed, translated or disclosed to third parties, or de-compiled in any way including, but not limited to, photocopy, photograph, electronic, mechanical, magnetic or manual without the express written permission of StoreNext Retail Technologies LLC or its licensors, if any. All copies, so authorized, shall contain a full copy of this copyright notice.

StoreNext Retail Technologies LLC endeavors to ensure that the information in this document is correct and fairly stated but does not accept liability for any error or omission. StoreNext Retail Technologies LLC makes no representation or warranties with respect to the contents hereof, and specifically disclaims any implied warranties of merchantability or fitness for a particular purpose or non-infringement. No commitments by StoreNext or its suppliers are made from this documentation which is provided for information only.

Development of StoreNext products and documentation is continuous: StoreNext Retail Technologies LLC reserves the right to revise this publication and to make changes from time to time in the contents hereof or in the products herein described or discussed without notice and without any obligation of StoreNext Retail Technologies LLC to notify any person or organization of such revision or changes. Information published in this document will likely become obsolete over time and it is recommended that users regularly check for updates and newer versions.

StoreNext Retail Technologies LLC has prepared this manual for use by users, authorized third parties and personnel of StoreNext Retail Technologies LLC as a guide to the proper installation, operation, customization and/or maintenance of StoreNext Retail Technologies LLC equipment and software. The drawings and specifications contained herein are the property of StoreNext Retail Technologies LLC and/or its licensors.

Third-party products, services, or company names referenced in this document may be trademarked or copyrighted by their respective owners, and are for identification purposes only.

Copyrights, trademarks and license agreements shall be governed and construed in accordance with the laws of the State of Texas and the Federal Arbitration Act, and shall benefit StoreNext, its successors, and assigns.

Address comments and corrections to:

StoreNext Retail Technologies LLC  
Software Program Director  
6100 Tennyson Parkway  
Suite 130  
Plano, Texas 75024

# TABLE of CONTENTS

0.	Document Control.....	b
0.1.	Distribution List — As per manuals .....	b
0.2.	Changes Forecast .....	b
0.3.	Change History .....	b
1.	Windows Server 2003 Standard Edition with SP1 Installation from R2 Release .....	1
1.2.	Reinstalling Only the Windows Server 2003 Standard Edition with SP1 component from the R2 Set .....	1
1.3.	Acer Driver Setup .....	4
1.3.1.	Chipset .....	4
1.3.2.	Graphic Adapter.....	4
1.3.3.	Network Driver .....	4
1.4.	Windows Setup .....	4
1.5.	Partitioning for Drive D.....	5
2.	Adding the Parallel Card.....	6
2.1.	Hardware Installation and Setup.....	6
3.	Loading the LSI Power Console Plus Software.....	7
3.1.	Power Console Installation (Basic Setup).....	7
4.	SQL Server 2000 Installation.....	7
4.1.	SQL Installation .....	7
4.2.	SQL Server 2000 SP3a Installation .....	8
4.3.	Register SQL Server .....	9
5.	Managing Your Server.....	10
5.1.	Starting Manage Your Server .....	10
6.	Go to the ISS45 Application Documentation for completing Server Installation ....	10

## 0. Document Control

0.1. Distribution List — As per manuals

0.2. Changes Forecast

This document will be updated as new configurations and corrections are made available

0.3. Change History

Issue 1: This is the initial release of this document.

**Note: The G320 is one of the first ACER products that dropped the support for the parallel connection. Your shipment should include a StarTech Parallel PCI card (PCI1PECP3V) that will need to be installed after the initial software setup is complete. DO NOT put this card in the unit at this time.**

## **1. Windows Server 2003 Standard Edition with SP1 Installation from R2 Release**

**Note: VERY IMPORTANT STEP TO PREVENT SOFTWARE PROBLEMS - The XD Technology must be turned off in the BIOS on the G320 Server to work with existing software. Follow step 1.1 below to do this**

CD's shipping with the G320 (The numbers may be different if newer versions of the software are shipping with the G320)

- Acer altos G320 Resource CD build 100 P/N:OD.R1805.001
- LSILOGIC MegaRAID Universal Software Suite Part#: 70-00314-01 Rev C  
**Note: This software ships with the G320 but is not to be used. Acer supplies the version tested with the G320 on the G320 Resource CD**
- Microsoft Windows Server 2003 R2

### 1.1. Steps to disable the XD Technology

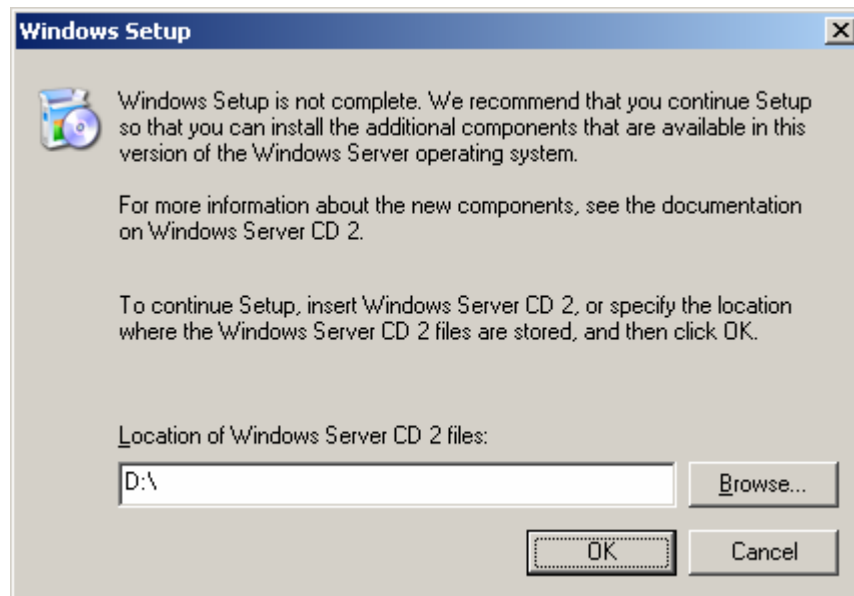
- 1.1.1. Press F2 when starting up the server to get into the BIOS
- 1.1.2. Go to the Security Tab on the BIOS screen
- 1.1.3. Move to XD Technology at the bottom of the security screen
- 1.1.4. Press the enter key, highlight Disable and press enter again
- 1.1.5. Press F10 to Save and Exit
- 1.1.6. Press Y to the question "Exit Saving Changes"

### 1.2. Reinstalling Only the Windows Server 2003 Standard Edition with SP1 component from the R2 Set

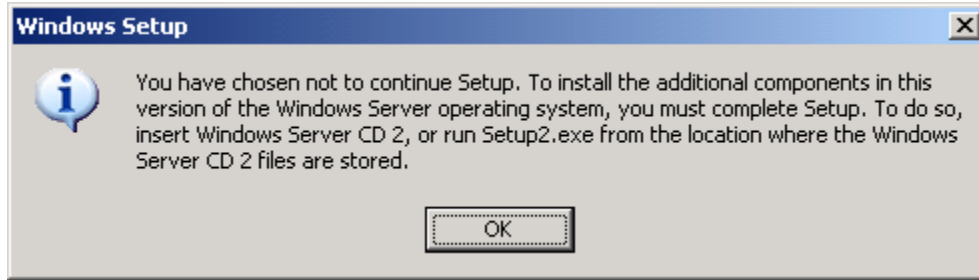
- 1.2.1. The first step is to change the boot order in the BIOS
  - Reboot the server and press F2 to enter the BIOS configuration
  - Under the Boot Tab set the following order
  - Set 1<sup>st</sup> Floppy Drive, 2<sup>nd</sup> CD-ROM and 3<sup>rd</sup> Hard Disk
  - Press F10 to save and exit
- 1.2.2. Put Disc 1 from the Windows Server 2003 R2 package into the CD ROM and reboot the machine
- 1.2.3. During reboot, the message **Press any key to boot from CD:** appears.  
Press any key
- 1.2.4. Welcome to setup screen appears. Hit Enter=Continue
- 1.2.5. Windows Licensing screen appears. Hit F8=I agree
- 1.2.6. The screen for partitioning the drive appears.
- 1.2.7. Partition the C drive for 70G
- 1.2.8. The next screen shows C: and approximately 70G. Hit Enter=Install

- 1.2.9. Highlight Format the partition using the NTFS file system. Hit Enter=Continue
- 1.2.10. The formatting screen appears next.
- 1.2.11. The next screen starts copying files for installation.
- 1.2.12. Your computer will reboot message appears on the screen
- 1.2.13. After the reboot, the installation program continues.
- 1.2.14. Regional and Language Options Screen appears. Defaults should be English already.
- 1.2.15. Select Next
- 1.2.16. Personalize Your Software screen appears
- 1.2.17. Key in Name: and Organization: then select Next.
- 1.2.18. Your Product Key screen appears. Key in your Product Key from the side panel of your Acer and Select Next.
- 1.2.19. Licensing Modes Screen appears. Key in the number of concurrent connections purchased (normally 5) in the Per server box and select Next.
- 1.2.20. Computer Name and Administrator Password screen appears.
- 1.2.21. Key in the computer name and password that you want and select Next.
- 1.2.22. Date and Time Setting screen appears. Set the values and select Next.
- 1.2.23. The installation program continues.
- 1.2.24. The computer will reboot.
- 1.2.25. The Windows Sign-on screen appears. Sign-on as the Administrator to continue setting up the Computer.

**NOTE: You will be prompted to insert Disc 2 but Windows Server 2003 Standard Edition with SP1 is installed at this point. CANCEL THE INSTALLATION OF DISK 2 OR THE R2 COMPONENTS WILL BE INSTALLED WHICH IS NOT CERTIFIED TO BE USED WITH ISS45, Fuel, and RBO. The screen to cancel is shown below**



**After canceling the above screen the next one below shows**



**Click OK to close the screen**

1.2.26. Manage Your Server screen appears

- Close the box by clicking the x in the top right corner of the screen

**Note: The minimum recommendation is to set up your Server as a File Server (This example will be done later in this procedure)**

1.2.27. ICON 30 days to activate windows will show indicating the need to activate the Windows software.

**Note: You have 30 days to activate this software with Microsoft.**

### 1.3. Acer Driver Setup

#### 1.3.1. Chipset

1.3.1.1. Put the Altos G320 Resource CD build 100 in the CD-ROM and accept license agreement

1.3.1.2. Click Drivers and go to Drivers\Altos G320\Chipset\Windows Server 2003

1.3.1.3. Click setup and complete the installation restarting at the end

#### 1.3.2. Graphic Adapter

1.3.2.1. Put the Altos G320 Resource CD build 100 in the CD-ROM and accept license agreement

1.3.2.2. Click Drivers and go to Drivers\Altos G320\Graphic adapters\ATI ES1000\Windows Server 2003

1.3.2.3. Click setup and complete the installation restarting at the end

#### 1.3.3. Network Driver

1.3.3.1. Put the Altos G320 Resource CD build 100 in the CD-ROM and accept license agreement

1.3.3.2. Close this screen since you will install Networks through device manager

1.3.3.3. Go to the Windows Device Manager screen

1.3.3.4. Click first ? Ethernet controller

1.3.3.5. Click reinstall driver

1.3.3.6. Install from a list or specific location

1.3.3.7. Leave bullet on Search for the best driver in these locations

1.3.3.8. Check box Search removable floppy, CD

1.3.3.9. Click next

1.3.3.10. Highlight d:\disk\g320\nic\Intel\pro1000.net\1000325.inf

1.3.3.11. Click next

1.3.3.12. Click Finish and close after the driver installs

1.3.3.13. Click on remaining ? Ethernet controller

1.3.3.14. Click reinstall driver

1.3.3.15. Install from a list or specific location

1.3.3.16. Leave bullet on Search for the best driver in these locations

1.3.3.17. Check box Search removable floppy, CD

1.3.3.18. Click next

1.3.3.19. Highlight d:\disk\g320\nic\Intel\pro1000.net\ele5132.inf

1.3.3.20. Click next

1.3.3.21. Click Finish and close after the driver installs

1.3.3.22. Disable the second network if you do not plan on using it.

**Note: This connection is for the bottom network connection on the back of the G320.**

1.3.3.22.1. Highlight Intel(R) Pro/1000 PM Network Connection

1.3.3.22.2. Click on the Disable ICON

### 1.4. Windows Setup

#### 1.4.1. SETUP THE WORKGROUP

- 1.4.1.1. Click Start / Control Panel / System
- 1.4.1.2. Click the Computer Name Tab
- 1.4.1.3. Give your computer a description then click the Change button
- 1.4.1.4. Check the Computer name and change if required
- 1.4.1.5. Check the member of Workgroup and change the name of the workgroup if required
- 1.4.1.6. Click OK or Cancel depending on your input above
- 1.4.1.7. Click the OK on the System Properties screen to close and exit

#### 1.4.2. SETUP NETWORK

- 1.4.2.1. Click Start / Control Panel / Network Connections / Local Area Connection
- 1.4.2.2. Setup your IP address for TCP/IP

#### 1.4.3. SETUP DISPLAY RESOLUTION

- 1.4.3.1. Start / Control Panel / Display
- 1.4.3.2. Settings Tab
- 1.4.3.3. Set the display to 800 by 600 Medium (16 bit)

### 1.5. Partitioning for Drive D

#### 1.5.1. Using Disk Management

- 1.5.1.1. Start / Program Files / Administrative Tools / Computer Management
- 1.5.1.2. Click Disk Management
- 1.5.1.3. Right Click CD ROM 0 and edit to change it's drive letter to z: (this is just a suggestion since it is installed as drive D:)
- 1.5.1.4. Right click the unallocated space (approx. 70GB) and then New Partition
- 1.5.1.5. The Wizard starts up
- 1.5.1.6. Click on Primary partition and Next
- 1.5.1.7. Select the size of the D: drive you want. (70GB is used in this example)
- 1.5.1.8. Click Next
- 1.5.1.9. Assign Drive letter D: and click Next
- 1.5.1.10. Format the partition with NTFS and select Next
- 1.5.1.11. Click Finish and format starts

**Note: Update all high priority updates from Microsoft. During the writing of this procedure there were 33 available**

**Note: If you are connecting to the Internet, Virus Protection is suggested for your protection**

## 2. Adding the Parallel Card

### 2.1. Hardware Installation and Setup

- 2.1.1. Shutdown windows and unplug the power cord and network cable
- 2.1.2. Install the parallel card  
(1 Port 3.3 Volt EPP/ECP Parallel PCI Card Adapter)  
Manufacturer: STARTECH.COM  
Mfg Part#: PCI1PECP3V (into the G320 but DO NOT attach the printer or HASP plug at this time)
- 2.1.3. Plug the power cord and network cable back into the G320 and power up the G320
- 2.1.4. Welcome to the found new hardware wizard (This indicates that the parallel card was found)
- 2.1.5. Put the Vendor's CD shipping with the parallel card into the CD ROM
- 2.1.6. Select no not this time to check windows update (Next)
- 2.1.7. Bullet on Install from a list or specific location (Advanced)
- 2.1.8. Bullet on don't search, I will choose the driver to install
- 2.1.9. Click on have disk
- 2.1.10. Browse CD to drive:\IO\PCI IO\win2k\_XP\_2003
- 2.1.11. Click OK
- 2.1.12. Click on PCI Multi-I/O Adapter
- 2.1.13. Click Next
- 2.1.14. Click on Continue anyway
- 2.1.15. Click finish and another window pops up
- 2.1.16. No not at this time to connect to Windows Update
- 2.1.17. Bullet on install from a list or specific location (Advanced)
- 2.1.18. Bullet on don't search, I will choose the driver to install
- 2.1.19. Leave show all devices highlighted and click Next
- 2.1.20. Click have disk
- 2.1.21. Browse CD to drive:\IO\PCI IO\win2k\_XP\_2003
- 2.1.22. Click open
- 2.1.23. Click OK
- 2.1.24. Click on PCI EPP/ECP Parallel Port
- 2.1.25. Click Next
- 2.1.26. Click on Continue anyway
- 2.1.27. Click on Finish
- 2.1.28. Board should be installed and show up in device manager
- 2.1.29. Change the parallel LPT port to #1
  - Device Manager
  - Ports (COM & LPT)
  - Double click LPT3
  - Port Settings TAB
  - Never use an interrupt is the default

- Enable Legacy and plug and play detection not checked is the default
- Change the dropdown from LPT3 (Default) to LPT1
- Click OK to save
- Exit the screen

2.1.30. Restart the computer

## 3. Loading the LSI Power Console Plus Software

### 3.1. Power Console Installation (Basic Setup)

- 3.1.1. Insert the altos G320 Resource CD build 100 in the CD ROM.
- 3.1.2. The License Agreement screen appears. Select Accept.
- 3.1.3. Click utilities | altos G320 | LSI Logic MegaRaid SCSI 320-1/320-2
- 3.1.4. Highlight Power Console Plus (Windows Server 2003)
- 3.1.5. Click the setup button
- 3.1.6. Setup launches click next
- 3.1.7. The next screen indicates the types of installation
- 3.1.8. Click Next
- 3.1.9. The custom setup screen appears
  - Note: For minimum management of the Raid adapter**
  - 3.1.9.1. Click on MegaRAID Client
  - 3.1.9.2. Select this feature, and all sub features, will be installed on local hard drive
  - 3.1.9.3. Click Next then Install
  - 3.1.9.4. Key in a password that you want to use to manage the RAID
  - 3.1.9.5. Click ok
  - 3.1.9.6. Click Finish and close the ACER CD
  - 3.1.9.7. The program is installed under Start / All Programs / Power Console Plus / Launch Client

## 4. SQL Server 2000 Installation

### 4.1. SQL Installation

- 4.1.1. Insert SQL Server 2000 CD in CD-ROM Drive (autorun)
- 4.1.2. At *SQL Server 2000* screen click *SQL SERVER 2000 Components*
- 4.1.3. At next screen click *INSTALL DATABASE SERVER* (wait 30 sec)
- Note: The next screen that may pop up shows that SQL Server 2000 sp2 and below is not supported by this version of Windows**
- 4.1.4. Click Continue to run the installation program. (SP3a will be applied for Windows Server 2003 support later in this document)
- 4.1.5. At Welcome click NEXT
- 4.1.6. At Computer Name put • Local Computer, click NEXT
- 4.1.7. At Installation Selection put • Create a new instance..., click NEXT
- 4.1.8. At User Information key in Name and Company, click NEXT

- 4.1.9. At Software License Agreement click YES to confirm
- 4.1.10. If required at CD-Key, key in 25 char. ID, click NEXT
- 4.1.11. At Installation Definition put • Server and Client Tools, click NEXT
- 4.1.12. At Instance Name put ✓ Default, click NEXT
- 4.1.13. At Setup Type, put • on Custom Install
- 4.1.14. Change destination folders for both Program and Data files:
- 4.1.15. At **EACH** path click Browse, change C:\PROG... to **D:\**, click OK  
**Note: This process creates the directory D:\MSSQL**
- 4.1.16. then at *Setup* Type click *NEXT*
- 4.1.17. At *Select Components* click *NEXT*
- 4.1.18. At *Services Accounts* put • Customize settings
  - 4.1.18.1. In *Services* put • SQL Server
    - 4.1.18.1.1. In *Service Settings* put • Use a Domain User account
    - 4.1.18.1.2. In Username: key **Administrator** (or accept default)
    - 4.1.18.1.3. In Password: key **(this is your administrators password)**
    - 4.1.18.1.4. In Domain: key **(server name)** (or accept default)
    - 4.1.18.1.5. Put ✓ Auto Start Service
  - 4.1.18.2. In *Services* put • SQL Server Agent
    - 4.1.18.2.1. In *Service Settings* put • Use a Domain User account
    - 4.1.18.2.2. In Username: key **Administrator** (or accept default)
    - 4.1.18.2.3. In Password: key **(this is your administrators password)**
    - 4.1.18.2.4. In Domain: key **(server name)** (or accept default)
    - 4.1.18.2.5. Put ✓ Auto Start Service, click *NEXT*, at *Setup* click *OK*
  - 4.1.18.3. Click *NEXT*
  - 4.1.18.4. At *Authentication Mode* put • Mixed Mode, put ✓ Blank Password, click *NEXT*
  - 4.1.18.5. At *Collation Settings* put • SQL Collations
  - 4.1.18.6. Highlight: **Binary order, for use with the 850(Multilingual) Character set**
  - 4.1.18.7. Click *NEXT*
  - 4.1.18.8. At *Network Libraries* remove ✓ from TCP/IP Sockets, then click *NEXT*
  - 4.1.18.9. At *Start Copying Files* click *NEXT*
  - 4.1.18.10. At *Choose Licensing Mode*, in *Licensing Mode* put • per Seat,
  - 4.1.18.11. key in your purchased licenses (example **5**) in device box, click *CONTINUE*
  - 4.1.18.12. Installs programs (8-9 min)
  - 4.1.18.13. Configures selections ( 2-3 min)
  - 4.1.18.14. At *Setup Complete* click *FINISH* to exit
  - 4.1.18.15. Remove CD then at Desktop reboot server

## 4.2. SQL Server 2000 SP3a Installation

- 4.2.1. Insert ISS45 Version 8 CD which contains SQL Server 2000 SP3a in CD-ROM drive

- 4.2.2. Locate the file sql2ksp3.exe on the CD (The file should be in the folder SQL2000SP3A)
- 4.2.3. Double click the file to run
- 4.2.4. This brings up a window asking where to extract the files
- 4.2.5. Use the default (C:\sql2ksp3) and select Finish
- Note: The specified output folder does not exist create it message appears**
- 4.2.6. Select Yes
- Note: The package has been delivered successfully message pops up**
- 4.2.7. Select OK
- Note: Run the SP3a upgrade by following the steps below**
- 4.2.8. Start / Run and browse to (C:\sql2k3\setup.bat)
- 4.2.9. Select Open
- 4.2.10. This selects the file and takes you back to the Run screen with the correct information displayed
- 4.2.11. Select OK
- 4.2.12. At *Welcome* click *NEXT*
- 4.2.13. At *Software License...*, click *YES*
- 4.2.14. At *Instance Name* leave ✓ Default, click *NEXT*
- 4.2.15. At *Connect to Server* put • SQL Server Authentication..., click *NEXT*
- 4.2.16. At *SA Password Warning Screen* put • Ignore the security threat warning, leave the password blank. Click OK
- 4.2.17. Check the box *Upgrade Microsoft Search and apply SQL Server 2000 SP3(required)*. Click *Continue*
- 4.2.18. At *error reporting* click *OK*
- 4.2.19. At *Start Copying Files* click *NEXT* (8-10 min.)
- 4.2.20. At the end of the upgrade, click OK
- 4.2.21. At Setup Complete screen, click Finish
- 4.2.22. Close any opened windows then at Desktop reboot server

#### 4.3. Register SQL Server

- 4.3.1. START / All PROGRAMS / Microsoft SQL SERVER / ENTERPRISE MANAGER
- 4.3.2. In the left window, open Microsoft *SQL Server*
- 4.3.3. In the left window, left click on *SQL Server Group*
- 4.3.4. In the right window, right click on the *SQL Server (default name Local)*
- 4.3.5. *Edit SQL Server registration properties*
- 4.3.6. On *General* screen, check the box for *Use SQL Server authentication*
- 4.3.7. Login Name: key **sa**, leave password blank click *OK*
- Note: If you get: WARNING – The client and server codepages... click OK ,**
- 4.3.8. Exit Enterprise Manager
- 4.3.9. Restart the Computer

## 5. Managing Your Server

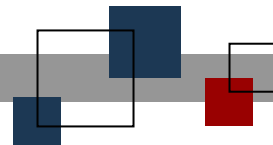
**Note: As stated earlier in this document, the minimum recommendation is to set up your Server as a File Server. The following steps perform this operation and share the Backup directory in the D:\MSSQL directory**

### 5.1. Starting Manage Your Server

- 5.1.1. Start / Administrative Tools / Manage your server
- 5.1.2. Click on Add or remove a role
- 5.1.3. Click Next at Preliminary steps
- 5.1.4. Place the bullet on custom configuration and click Next
- 5.1.5. Highlight File Server and click Next
- 5.1.6. Click Next at file server disk quotas
- 5.1.7. Click Next at file server indexing service accepting the default
- 5.1.8. Click Next and the share a folder wizard pops up
- 5.1.9. Browse and share D:\MSSQL\Backup folder
- 5.1.10. Click Next and Next again
- 5.1.11. Place the bullet on Administrators have full access; other users have read-only access
- 5.1.12. Click Finish
- 5.1.13. Click Close
- 5.1.14. Click Finish

## 6. Go to the ISS45 Application Documentation for completing Server Installation





**© StoreNext Retail Technologies LLC 2006**

StoreNext Retail Technologies LLC endeavors to ensure that the information in this document is correct and fairly stated but does not accept liability for any error or omission.

The development of StoreNext products and services is continuous and published information may not be up to date. It is important to check the current position with StoreNext. This document is not part of a contract or license save insofar as may be expressly agreed.