


- 
- A decorative horizontal line with a grey background, overlaid with several overlapping squares in dark blue, red, and white, some with black outlines.
- *Acer Altos G530 Installation Guide*
  - *for ISS45 V8 with*
  - *Windows 2003 Server*
  - *SQL 2000 with*
  - *SP1 Re-Installation*



## Acer Altos G530 Installation Guide with SP1 Re-installation

<b>Date of Issue</b>	<b>Product Identification Number</b>	<b>Part Number</b>	<b>Brief Description</b>
April 2006	N/A	89000296	Initial Release
August 2006	N/A	89000316	Win Server R2

**© Copyright StoreNext Retail Technologies LLC 1995-2006  
All rights reserved**

This publication is protected by federal copyright law. No part of this publication may be reproduced or transmitted into any human or computer language in any form or by any means, stored in a retrieval system, transmitted, redistributed, translated or disclosed to third parties, or de-compiled in any way including, but not limited to, photocopy, photograph, electronic, mechanical, magnetic or manual without the express written permission of StoreNext Retail Technologies LLC or its licensors, if any. This document, notwithstanding the above, may be distributed in electronic or printed form to personnel who are employed by either (1) a StoreNext customer of the subject system of this document or (2) personnel from an authorized StoreNext dealer of the subject system of this document. All copies, so distributed and/or so authorized, shall contain a full copy of this copyright notice.

StoreNext Retail Technologies LLC endeavors to ensure that the information in this document is correct and fairly stated but does not accept liability for any error or omission. StoreNext Retail Technologies LLC makes no representation or warranties with respect to the contents hereof, and specifically disclaims any implied warranties of merchantability or fitness for a particular purpose or non-infringement. No commitments by StoreNext or its suppliers are made from this documentation which is provided for information only.

Development of StoreNext products and documentation is continuous: StoreNext Retail Technologies LLC reserves the right to revise this publication and to make changes from time to time in the contents hereof or in the products herein described or discussed without notice and without any obligation of StoreNext Retail Technologies LLC to notify any person or organization of such revision or changes. Information published in this document will likely become obsolete over time and it is recommended that users regularly check for updates and newer versions.

StoreNext Retail Technologies LLC has prepared this manual for use by users, authorized third parties and personnel of StoreNext Retail Technologies LLC as a guide to the proper installation, operation, customization and/or maintenance of StoreNext Retail Technologies LLC equipment and software. The drawings and specifications contained herein are the property of StoreNext Retail Technologies LLC and/or its licensors.

Third-party products, services, or company names referenced in this document may be trademarked or copyrighted by their respective owners, and are for identification purposes only.

Copyrights, trademarks and license agreements shall be governed and construed in accordance with the laws of the State of Texas and the Federal Arbitration Act, and shall benefit StoreNext, its successors, and assigns.

Address comments and corrections to:

**StoreNext Retail Technologies LLC**  
Software Program Director  
6100 Tennyson Parkway  
Suite 130  
Plano, Texas 75024

## TABLE of CONTENTS

0.	Document Control.....	b
0.1.	Distribution List — As per manuals .....	b
0.2.	Changes Forecast .....	b
0.3.	Change History .....	b
1.	Windows Server 2003 Standard Edition with SP1 Installation from R2 Release .....	1
1.1.	Reinstalling Only the Windows Server 2003 Standard Edition with SP1 component from the R2 set .....	1
1.2.	Windows Setup .....	3
1.3.	Partitioning for Drive D .....	4
2.	Loading the LSI Power Console Plus Software.....	4
2.1.	Power Console Installation .....	4
3.	SQL Server 2000 Installation.....	5
3.1.	SQL Installation.....	5
3.2.	SQL Server 2000 SP3a Installation .....	6
3.3.	Register SQL Server .....	7
4.	Managing Your Server.....	7
4.1.	Starting Manage Your Server .....	7
5.	Go to the ISS45 Application Documentation for completing Server Installation .....	8

## 0. Document Control

0.1. Distribution List — As per manuals

0.2. Changes Forecast

This document will be updated as new configurations and corrections are made available

0.3. Change History

Issue 1: This is the initial release of this document.

**Note: The G530 is one of the first ACER RAID products that have dropped the support for the parallel connection. ISS45 is now using USB HASP keys for this product and does not intend to support any parallel connections on this Raid Server.**

## **1. Windows Server 2003 Standard Edition with SP1 Installation from R2 Release**

CD's shipping with the G530

- Acer EasyBuild v7.0 build 300 P/N: SR.EBT09.003
  - Management CD v.7.0 Build 300T
  - System CD v.7.0 Build 300
  - Resource CD v.7.0 Build 300
  - Utilities and Manual CD v.7.0 Build 300
- LSILOGIC MegaRAID Universal Software Suite Part#: 70-00314-01 Rev C  
**Note: This software ships with the G530 but is not to be used. Acer supplies the version tested with the G530 in the EasyBuild pack**
- Microsoft Windows Server 2003 R2

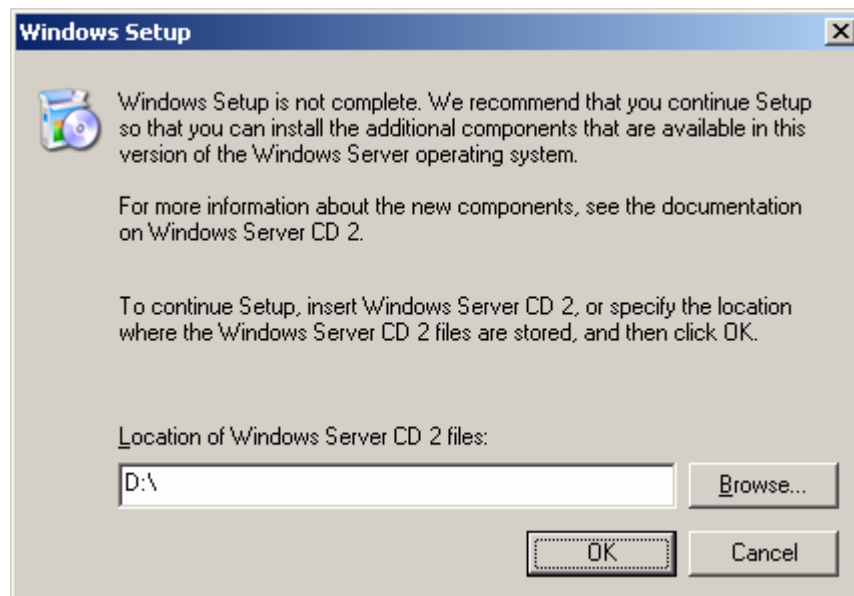
### 1.1. Reinstalling Only the Windows Server 2003 Standard Edition with SP1 component from the R2 set

- 1.1.1. The first step is to change the boot order in the BIOS
  - Reboot the server and press F2 to enter the BIOS configuration
  - Set 1<sup>st</sup> Floppy Drive, 2<sup>nd</sup> CD-ROM and 3<sup>rd</sup> RAID
- 1.1.2. Insert the EasyBUILD system CD into the CD-ROM drive and reboot the system
- 1.1.3. Click on English and then (Next)
- 1.1.4. System configuration screen appears
- 1.1.5. Click on (Install OS)
- 1.1.6. Select OS Microsoft Windows Server 2003 and click (Next)
- 1.1.7. Read the Notice message and click (Next)
- 1.1.8. Fill in the information for Windows Server 2003
  - Target Path/Full Name/Company Name/Computer Name/Admin Password/Confirm Password/CD-Key/Time Zone and click (Next)
- 1.1.9. Fill in the information for Workgroup
  - Add into Workgroup/Workgroup name/License Mode: Per server/User count: Default is 5 and click (Next)
- 1.1.10. Setup Network information for each card
  - TCP/IP/IP info/DNS if required/WINS if required and click (Next)

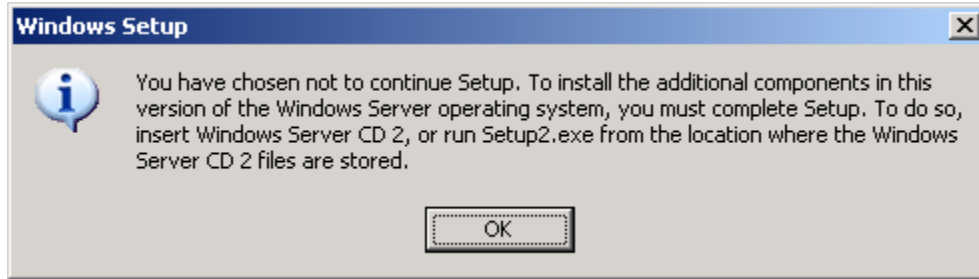
**Note: You can leave the settings as is and set the NIC's up after the system is up and running**
- 1.1.11. Storage screen
  - Allocate disk space by double clicking in the Size(MB) box to change the default from 10240

- Key in 70000 MB for the partition which should show Free Size(MB) at the bottom about 70001 available later for drive D:
  - Click on (Next)
- 1.1.12. At the IIS screen, uncheck the box for Internet Information services and click (Next)
- 1.1.13. Review the confirmation screen and click (Finish)
- 1.1.14. A popup is shown indicating that the hard disk will be formatted. Click (Yes)
- 1.1.15. The hard disk will be formatted, please press 'Enter' key to continue
- 1.1.16. After the format, the CD ROM door pops open and you are asked to put in the Windows 2003 server CD.
- 1.1.17. Put in Windows Server System Disc 1 from the Windows Server 2003 R2 set and press 'Enter'
- 1.1.18. After the system copies files a message to remove the CD and Press 'Enter' to reboot is displayed
- 1.1.19. The system Restarts and starts Setup
- 1.1.20. The system Restarts after installation complete
- 1.1.21. The Windows Signon screen appears
- Signon as the Administrator to continue setting up the Computer.

**NOTE: You will be prompted to insert Disc 2 but Windows Server 2003 Standard Edition with SP1 is installed at this point. CANCEL THE INSTALLATION OF DISK 2 OR THE R2 COMPONENTS WILL BE INSTALLED WHICH IS NOT CERTIFIED TO BE USED WITH ISS45, Fuel, and RBO. The screen to cancel is shown below**



**After canceling the above screen the next one below shows**



**Click OK to close the screen**

1.1.22. Manage Your Server screen appears

- Close the box by clicking the x in the top right corner of the screen

**Note: The minimum recommendation is to set up your Server as a File Server (This example will be done later in this procedure)**

1.1.23. A Setup Prompt screen indicating “Please click the setup.exe on the desktop to install chipset driver” shows on the screen. Click on OK to close the window.

1.1.24. Click the setup.exe on the desktop and complete the chipset driver installation by clicking Finish at the end to restart the computer.

1.1.25. Signon after the restart and delete the setup.exe that you ran in the above step off of the desktop.

1.1.26. ICON 30 days to activate windows will show indicating the need to activate the Windows software.

**Note: You have 30 days to activate this software with Microsoft.**

## 1.2. Windows Setup

### 1.2.1. SETUP THE WORKGROUP

1.2.1.1. Click Start / Control Panel / System

1.2.1.2. Click the Computer Name Tab

1.2.1.3. Give your computer a description then click the Change button

1.2.1.4. Check the Computer name and change if required

1.2.1.5. Check the member of Workgroup and change the name of the workgroup if required

1.2.1.6. Click OK or Cancel depending on your input above

1.2.1.7. Click the OK on the System Properties screen to close and exit

### 1.2.2. SETUP NETWORK

**Note 1: There are two network connections on the G530. The upper LAN connection is using the Marvell Yukon driver and the lower LAN2 connection is using the Intel Pro 1000/MT driver. Disable one of the connections through the Device Manager if you do not intend to use it.**

**Note 2: When the G530 was first tested it was found that the Marvell Yukon network would disappear. This happens with Windows Server 2003 using the initial driver supplied on the EasyBuild CD. A new Marvell version 8.49.2.3 driver was obtained from Acer to correct this problem.**

1.2.2.1. Click Start / Control Panel / Network Connections / Local Area Connection or Local Area Connection 2

1.2.2.2. Setup your IP address for TCP/IP

### 1.2.3. SETUP DISPLAY RESOLUTION

1.2.3.1. Start / Control Panel / Display

1.2.3.2. Settings Tab

1.2.3.3. Set the display to 800 by 600 Medium (16 bit)

## 1.3. Partitioning for Drive D

### 1.3.1. Using Disk Management

1.3.1.1. Start / Program Files / Administrative Tools / Computer Management

1.3.1.2. Click Disk Management

1.3.1.3. Right Click CD ROM 0 and edit to change it's drive letter to z: (this is just a suggestion since it is installed as drive D:)

1.3.1.4. Right click the unallocated space (approx. 70GB) and then New Partition

1.3.1.5. The Wizard starts up

1.3.1.6. Click on Primary partition and Next

1.3.1.7. Select the size of the D: drive you want. (70GB is used in this example)

1.3.1.8. Click Next

1.3.1.9. Assign Drive letter D: and click Next

1.3.1.10. Format the partition with NTFS and select Next

1.3.1.11. Click Finish and format starts

**Note: Update all critical fixes from Microsoft. During the writing of this procedure there were 33 available**

**Note: If you are connecting to the Internet, Virus Protection is suggested for your protection**

## 2. Loading the LSI Power Console Plus Software

### 2.1. Power Console Installation

2.1.1. Insert the Utilities and Manual CD v.7.0 Build 300 from the Acer EasyBUILD set in the CD ROM.

- 2.1.2. The License Agreement screen appears. Select Accept.
- 2.1.3. Select Utilities | Altos G530 | LSI Logic MegaRAID SCSI 320-1/320-2
- 2.1.4. Highlight the Power Console Plus (Windows 2000/2003)
- 2.1.5. Click the Setup ICON button on the bottom of the screen
- 2.1.6. Click next at the welcome screen
- 2.1.7. The next screen indicates the types of installation
- 2.1.8. Click Next
- 2.1.9. The custom setup screen appears
  - Note: For minimum management of the Raid adapter**
  - 2.1.9.1. Click on MegaRAID Client
  - 2.1.9.2. Select this feature, and all sub features, will be installed on local hard drive
  - 2.1.9.3. Click Next then Install
  - 2.1.9.4. Click Finish and close the ACER CD
  - 2.1.9.5. The program is installed under Start / All Programs / Power Console Plus / Launch Client

### 3. SQL Server 2000 Installation

#### 3.1. SQL Installation

- 3.1.1. Insert SQL Server 2000 CD in CD-ROM Drive (autorun)
- 3.1.2. At *SQL Server 2000* screen click *SQL SERVER 2000 Components*
- 3.1.3. At next screen click *INSTALL DATABASE SERVER* (wait 30 sec)
- Note: The next screen that may pop up shows that SQL Server 2000 sp2 and below is not supported by this version of Windows**
- 3.1.4. Click Continue to run the installation program. (SP3a will be applied for Windows Server 2003 support later in this document)
- 3.1.5. At Welcome click NEXT
- 3.1.6. At Computer Name put • Local Computer, click NEXT
- 3.1.7. At Installation Selection put • Create a new instance..., click NEXT
- 3.1.8. At User Information key in Name and Company, click NEXT
- 3.1.9. At Software License Agreement click YES to confirm
- 3.1.10. If required at CD-Key, key in 25 char. ID, click NEXT
- 3.1.11. At Installation Definition put • Server and Client Tools, click NEXT
- 3.1.12. At Instance Name put ✓ Default, click NEXT
- 3.1.13. At Setup Type, put • on Custom Install
- 3.1.14. Change destination folders for both Program and Data files:
- 3.1.15. At **EACH** path click Browse, change C:\PROG... to **D:\**, click OK
- Note: This process creates the directory D:\MSSQL**
- 3.1.16. then at *Setup* Type click *NEXT*
- 3.1.17. At *Select Components* click *NEXT*
- 3.1.18. At *Services Accounts* put • Customize settings
  - 3.1.18.1. In *Services* put • SQL Server
    - 3.1.18.1.1. In *Service Settings* put • Use a Domain User account
    - 3.1.18.1.2. In Username: key **Administrator** (or accept default)

- 3.1.18.1.3. In Password: key (**this is your administrators password**)
- 3.1.18.1.4. In Domain: key (**server name**) (or accept default)
- 3.1.18.1.5. Put  Auto Start Service
- 3.1.18.2. In *Services* put • SQL Server Agent
  - 3.1.18.2.1. In *Service Settings* put • Use a Domain User account
  - 3.1.18.2.2. In Username: key **Administrator** (or accept default)
  - 3.1.18.2.3. In Password: key (**this is your administrators password**)
  - 3.1.18.2.4. In Domain: key (**server name**) (or accept default)
  - 3.1.18.2.5. Put  Auto Start Service, click *NEXT*, at *Setup* click *OK*
- 3.1.18.3. Click *NEXT*
- 3.1.18.4. At *Authentication Mode* put • Mixed Mode, put  Blank Password, click *NEXT*
- 3.1.18.5. At *Collation Settings* put • SQL Collations
- 3.1.18.6. Highlight: **Binary order, for use with the 850(Multilingual) Character set**
- 3.1.18.7. Click *NEXT*
- 3.1.18.8. At *Network Libraries* remove  from TCP/IP Sockets, then click *NEXT*
- 3.1.18.9. At *Start Copying Files* click *NEXT*
- 3.1.18.10. At *Choose Licensing Mode*, in *Licensing Mode* put • per Seat,
- 3.1.18.11. key in your purchased licenses (example **5**) in device box, click *CONTINUE*
- 3.1.18.12. Installs programs (8-9 min)
- 3.1.18.13. Configures selections ( 2-3 min)
- 3.1.18.14. At *SetupComplete* click *FINISH* to exit
- 3.1.18.15. Remove CD then at Desktop reboot server

## 3.2. SQL Server 2000 SP3a Installation

- 3.2.1. Insert ISS45 Version 8 CD which contains SQL Server 2000 SP3a in CD-ROM drive
- 3.2.2. Locate the file sql2ksp3.exe on the CD (The file should be in the folder SQL2000SP3A)
- 3.2.3. Double click the file to run
- 3.2.4. This brings up a window asking where to extract the files
- 3.2.5. Use the default (C:\sql2ksp3) and select Finish
- Note: The specified output folder does not exist create it message appears**
- 3.2.6. Select Yes
- Note: The package has been delivered successfully message pops up**
- 3.2.7. Select OK
- Note: Run the SP3a upgrade by following the steps below**
- 3.2.8. Start / Run and browse to (C:\sql2k3\setup.bat)
- 3.2.9. Select Open
- 3.2.10. This selects the file and takes you back to the Run screen with the correct information displayed
- 3.2.11. Select OK

- 3.2.12. At *Welcome* click *NEXT*
- 3.2.13. At *Software License...*, click *YES*
- 3.2.14. At *Instance Name* leave ✓ Default, click *NEXT*
- 3.2.15. At *Connect to Server* put • *SQL Server Authentication...*, click *NEXT*
- 3.2.16. At *SA Password Warning Screen* put • Ignore the security threat warning, leave the password blank. Click *OK*
- 3.2.17. Check the box *Upgrade Microsoft Search and apply SQL Server 2000 SP3(required)*. Click *Continue*
- 3.2.18. At *error reporting* click *OK*
- 3.2.19. At *Start Copying Files* click *NEXT* (8-10 min.)
- 3.2.20. At the end of the upgrade, click *OK*
- 3.2.21. At *Setup Complete* screen, click *Finish*
- 3.2.22. Close any opened windows then at *Desktop* reboot server

### 3.3. Register SQL Server

- 3.3.1. **START / All PROGRAMS / Microsoft SQL SERVER / ENTERPRISE MANAGER**
- 3.3.2. In the left window, open *Microsoft SQL Servers*
- 3.3.3. *In the left window, left click on SQL Server Group*
- 3.3.4. *In the right window, right click on the SQL Server (default name Local)*
- 3.3.5. *Edit SQL Server registration properties*
- 3.3.6. *On General screen, check the box for Use SQL Server authentication*
- 3.3.7. Login Name: key **sa**, leave password blank click *OK*
- Note: If you get: WARNING – The client and server codepages... click OK ,**
- 3.3.8. Exit Enterprise Manager
- 3.3.9. Restart the Computer

## 4. Managing Your Server

**Note: As stated earlier in this document, the minimum recommendation is to set up your Server as a File Server. The following steps perform this operation and share the Backup directory in the D:\MSSQL directory**

### 4.1. Starting Manage Your Server

- 4.1.1. Start / Administrative Tools / Manage your server
- 4.1.2. Click on Add or remove a role
- 4.1.3. Click Next at Preliminary steps
- 4.1.4. Place the bullet on custom configuration and click Next
- 4.1.5. Highlight File Server and click Next
- 4.1.6. Click Next at file server disk quotas
- 4.1.7. Click Next at file server indexing service accepting the default
- 4.1.8. Click Next and the share a folder wizard pops up
- 4.1.9. Browse and share D:\MSSQL\Backup folder
- 4.1.10. Click Next and Next again

4.1.11. Place the bullet on Administrators have full access; other users have read-only access

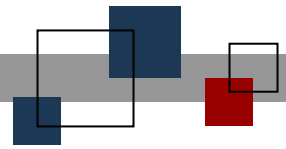
4.1.12. Click Finish

4.1.13. Click Close

4.1.14. Click Finish

## **5. Go to the ISS45 Application Documentation for completing Server Installation**





**© StoreNext Retail Technologies LLC 2006**

StoreNext Retail Technologies LLC endeavors to ensure that the information in this document is correct and fairly stated but does not accept liability for any error or omission.

The development of StoreNext products and services is continuous and published information may not be up to date. It is important to check the current position with StoreNext. This document is not part of a contract or license save insofar as may be expressly agreed.