

-  *Connected Payments*
-  *Release Notes*
-  *Release 2.12*
- 
- 



Connected Payments Release Notes

Date of Issue	Product Identification Number	Part Number	Brief Description
February 2008	45001/112	89000428	Release 2.6
June 2008	45001/112	89000445	Release 2.7
July 2008	45001/112	89000460	Release 2.8
September 2008	45001/112	89000474	Release 2.9
October 2008	45001/112	89000477	Release 2.10
December 2008	45001/112	89000486	Release 2.11
January 2009	45001/112	89000487	Release 2.12

**© Copyright StoreNext Retail Technologies LLC 1995-2009
All rights reserved**

This publication is protected by federal copyright law. No part of this publication may be reproduced or transmitted into any human or computer language in any form or by any means, stored in a retrieval system, transmitted, redistributed, translated or disclosed to third parties, or de-compiled in any way including, but not limited to, photocopy, photograph, electronic, mechanical, magnetic or manual without the express written permission of StoreNext Retail Technologies LLC or its licensors, if any. This document, notwithstanding the above, may be distributed in electronic or printed form to personnel who are employed by either (1) a StoreNext customer of the subject system of this document or (2) personnel from an authorized StoreNext dealer of the subject system of this document. All copies, so distributed and/or so authorized, shall contain a full copy of this copyright notice.

StoreNext Retail Technologies LLC endeavors to ensure that the information in this document is correct and fairly stated but does not accept liability for any error or omission. StoreNext Retail Technologies LLC makes no representation or warranties with respect to the contents hereof, and specifically disclaims any implied warranties of merchantability or fitness for a particular purpose or non-infringement. No commitments by StoreNext or its suppliers are made from this documentation which is provided for information only.

Development of StoreNext products and documentation is continuous: StoreNext Retail Technologies LLC reserves the right to revise this publication and to make changes from time to time in the contents hereof or in the products herein described or discussed without notice and without any obligation of StoreNext Retail Technologies LLC to notify any person or organization of such revision or changes. Information published in this document will likely become obsolete over time and it is recommended that users regularly check for updates and newer versions.

StoreNext Retail Technologies LLC has prepared this manual for use by users, authorized third parties and personnel of StoreNext Retail Technologies LLC as a guide to the proper installation, operation, customization and/or maintenance of StoreNext Retail Technologies LLC equipment and software. The drawings and specifications contained herein are the property of StoreNext Retail Technologies LLC and/or its licensors.

Third-party products, services, or company names referenced in this document may be trademarked or copyrighted by their respective owners, and are for identification purposes only.

Copyrights, trademarks and license agreements shall be governed and construed in accordance with the laws of the State of Texas and the Federal Arbitration Act, and shall benefit Retailix, its successors, and assigns.

Address comments and corrections to:

StoreNext Retail Technologies LLC
Software Program Director
6100 Tennyson Parkway
Suite 130
Plano, Texas 75024

Table of Contents

SECTION 1	4
Connected Payments Fixed Issues and Enhancements	4
Server Changes	4
Stand Beside Solutions	8
VeriFone Vx570	8
Host Changes	9
ACI	9
ADS.....	9
Chase Paymentech	9
Concord: H&C Format	9
MPS (Fifth Third)	10
Shazam.....	10
Solupay/Echo.....	10
 SECTION 2	 11
New Features	11

Section 1

Connected Payments Fixed Issues and Enhancements

Server Changes

Enhancement	Description
1. Proxy Client uses port 443 for the health message	<ul style="list-style-type: none"> • Enhancement • To increase security, the Proxy Client now uses port 443 (SSL) for health messages.
2. Remove OpenEPS batches from inapplicable reports	<ul style="list-style-type: none"> • Fixed • OpenEPS Batches will now only be displayed on reports that list transactions processed by OpenEPS. In previous versions, "OpenEPS Batches" would be incorrectly displayed on reports where there were no transactions processed by OpenEPS.
3. Calendar Control allows selection of only valid dates	<ul style="list-style-type: none"> • Enhancement • The calendar control has been updated to prevent selection of future dates.
4. Enlarged "X" for close tab feature	<ul style="list-style-type: none"> • Enhancement • For each tab, the "X" used for closing that tab is slightly larger, allowing a easier time of selecting it to close the tab.
5. Optimized store selection control	<ul style="list-style-type: none"> • Enhancement • Increased the responsiveness of the store selection control on the Web GUI. Previously, making selections was taking longer than necessary; this control has been optimized to allow quick store selection.

Section 1 – Connected Payments Fixed Issues and Enhancements
Server CChangesC

Enhancement	Description
6. Calendar Control current date in bold	<ul style="list-style-type: none"> • Enhancement • To improved visibility, in the new calendar control, the current date is highlighted in bold text.
7. Transaction search defaults to show all columns	<ul style="list-style-type: none"> • Enhancement • On the Transaction search page, the displayed transactions now default to showing all the available columns. • Toggling between displaying only the basic columns, or showing all the columns can be adjusted by clicking the “Show All Columns”/”Hide Additional Columns” toggle at the top of the screen. • The user selected setting will be retained as a cookie.
8. Paged View or Show All View	<ul style="list-style-type: none"> • Enhancement • In addition to showing a paged view designed for quicker loading, the User Management page also features the ability to select a Show All feature that lists all the paged items on one screen.
9. Host Settlement Report is no longer limited to last 90 days of settlements	<ul style="list-style-type: none"> • Enhancement • The Host Settlement Report is no longer limited to the last 90 days of settlements; the selection box now lists all available settlements.
10. Added Private Credit and Private Debit to Store Sales Summary Reports	<ul style="list-style-type: none"> • Enhancement • Private Credit and Private Debit totals have been added to the Sales Summary reports (SSR01 through SSR04).
11. Auto selection of single day batches	<ul style="list-style-type: none"> • Enhancement • When viewing reports for a single store with multiple hosts on a single date, the Generate Report button will automatically select all available batches and display them.
12. Calendar Control enhancements	<ul style="list-style-type: none"> • Enhancement • The Calendar control has undergone extensive enhancement and revision to offer an improved customer experience. • See Section 2 for additional information.

Section 1 – Connected Payments Fixed Issues and Enhancements
Server CChangesC

Enhancement	Description
13. Store Selection Control enhancements	<ul style="list-style-type: none"> • Enhancement • The store selection dropdown box has been enhanced with a new layout, including selectable footers as well as being loaded with a page-based list of stores instead of the whole store list. • These enhancements as well as general control enhancements have improved the responsiveness of the Store Selection Control for companies with large amounts of stores. • See Section 2 for additional information.
14. Reports page numbers not working	<ul style="list-style-type: none"> • Fixed • Forms that allowed page number selection received an error; this has been corrected.
15. Store and Store Groups fix	<ul style="list-style-type: none"> • Fixed • Corrected bug in Web GUI Store and Store Group page.
16. Darker signature rendering for printing	<ul style="list-style-type: none"> • Enhancement • Captured signatures displayed to the screen through the Web GUI have been darkened to allow clearer printing and photocopying of the receipt image.
17. Calendar Control on Transaction Search page	<ul style="list-style-type: none"> • Enhancement • The Calendar Control on the Transaction Search includes an “X” in the upper right to allow quick closing after date selection. • The Calendar may alternately be closed by clicking anywhere on the Transaction Search page.
18. Show host response codes on Reports	<ul style="list-style-type: none"> • Enhancement • The reports that previously showed the internal response code will now show the response code returned by the end host. These codes are more useful in researching a transaction than the internal codes are. • See Section 2 for additional information.
19. Store Selection dropdown features Search All Stores footer	<ul style="list-style-type: none"> • Enhancement • On the Transaction Search store selection dropdown box the Search All Stores option has been made more accessible. It was moved from the end of the list to a footer at the bottom of the dropdown combo box.

Section 1 – Connected Payments Fixed Issues and Enhancements
Server CChangesC

Enhancement	Description
20. User Account Management screen enhancement	<ul style="list-style-type: none">• Enhancement• The User Account Management screen has been enhanced. Creating new users and modifying user permission levels have been revised to enhance utility.• See Section 2 for additional Information.
21. Web GUI, IE 6 enhancements	<ul style="list-style-type: none">• Enhancement• Various enhancements have been made throughout the Web GUI to improve general functionality with Internet Explorer 6.
22. Combine Group renaming and editing pages	<ul style="list-style-type: none">• Enhancement• Previously there were separate Web GUI pages for renaming a user group and for editing that user group's permissions. These activities have been combined into a single page for ease of use.• See Section 2 for additional Information.

Stand Beside Solutions

VeriFone Vx570

Enhancement	Description
23. Vx570 Stand Beside Solution	<ul style="list-style-type: none"> • New Terminal • The VeriFone Vx570 is now supported for use with the OpenEPS Direct payments solution. This stand-alone terminal connects via Ethernet through a standard broadband internet connection to the Connected Payments host. • The Vx570 is PCI/PED approved and features encrypted communications from the terminal to the payments host. • The Vx570 supports the following: <ul style="list-style-type: none"> Credit Debit EBT (Food and Cash) Check (ECC with MagTek miniMICR) Zip Code and CVV2 entry Serial Number reporting • Credit to Debit Conversion is not currently supported with the Vx570. • Included support for operating in Balance Inquiry Only mode. • Dial backup is not yet available.

Host Changes

ACI

Enhancement	Description
1. -No Change to Host -	<ul style="list-style-type: none"> ---

ADS

Enhancement	Description
1. -No Change to Host -	<ul style="list-style-type: none"> ---

Chase Paymentech

Enhancement	Description
1. -No Change to Host -	<ul style="list-style-type: none"> ---

Concord: H&C Format

Enhancement	Description
1. -No Change to Host -	<ul style="list-style-type: none"> ---

MPS (Fifth Third)

Enhancement	Description
1. -No Change to Host -	<ul style="list-style-type: none"> • ---

Shazam

Enhancement	Description
1. -No Change to Host -	<ul style="list-style-type: none"> • ---

Solupay/Echo

Enhancement	Description
1. -No Change to Host -	<ul style="list-style-type: none"> • ---

Section 2

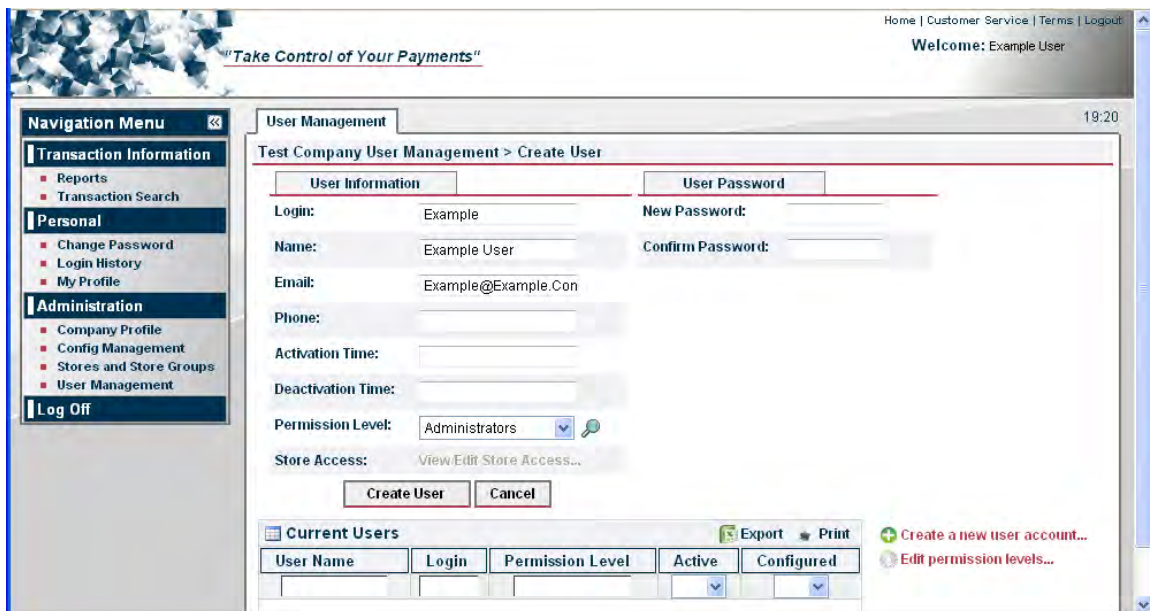
New Features

Web GUI Enhancements

A variety of enhancements have been made to the Web GUI to improve user experience. The following sections detail those enhancements and explain how they can be used.

User Account and Group Management

The User Management and Stores and Store Groups pages have been improved with significant enhancements.



The user list view has been set to “Paged” mode by default to speed loading time for the User Management page. Paged mode will load and display only a limited number of the user accounts in the database, and thus speeds page loading time.

A user may select the page number to view, allowing them to cycle through all the pages of users.

The creation of new user accounts has been simplified by placing all the required information on a single page and verifying all required data is complete before allowing the user to be created.

Previously a user had to be created and then assigned a password separately, as well as individually activated; with the current design, the password can be set along with the basic account information.

Additionally when a new user account is saved, if the Activation Time was not filled out, the account is automatically set active using the present date and time, so there is no longer a need for the separate step of activating the account.

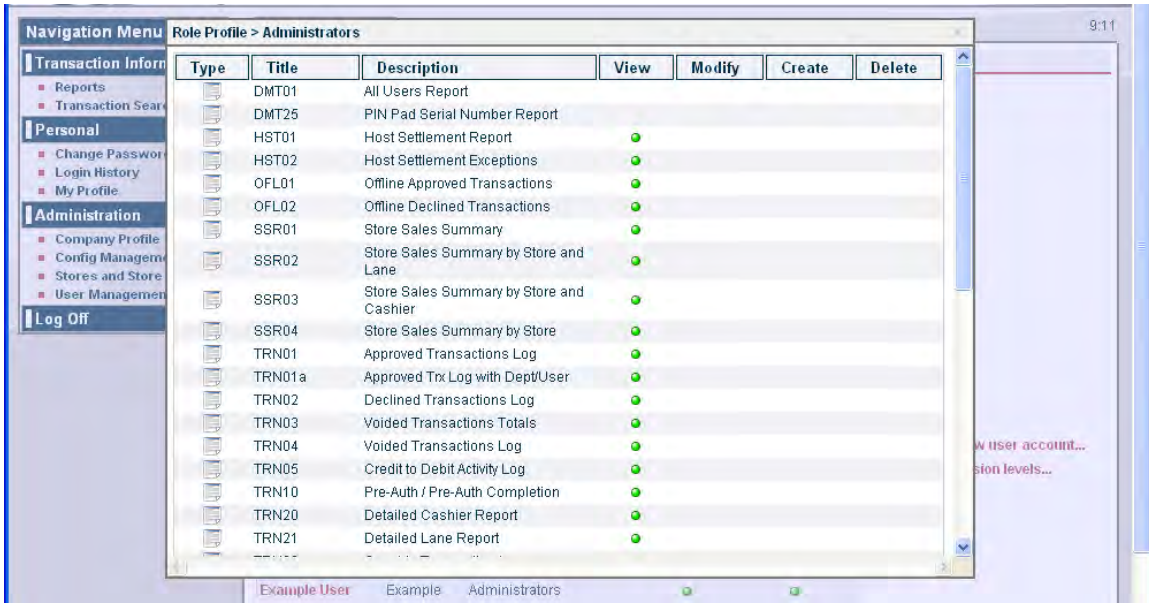
This new screen retains the ability to review the specific permissions granted to the user account due to group membership; this option is now available by clicking the spyglass icon next to the Permission Level in the user Information section.

The screenshot displays a web form for creating a new user account, divided into two main sections: "User Information" and "User Password".

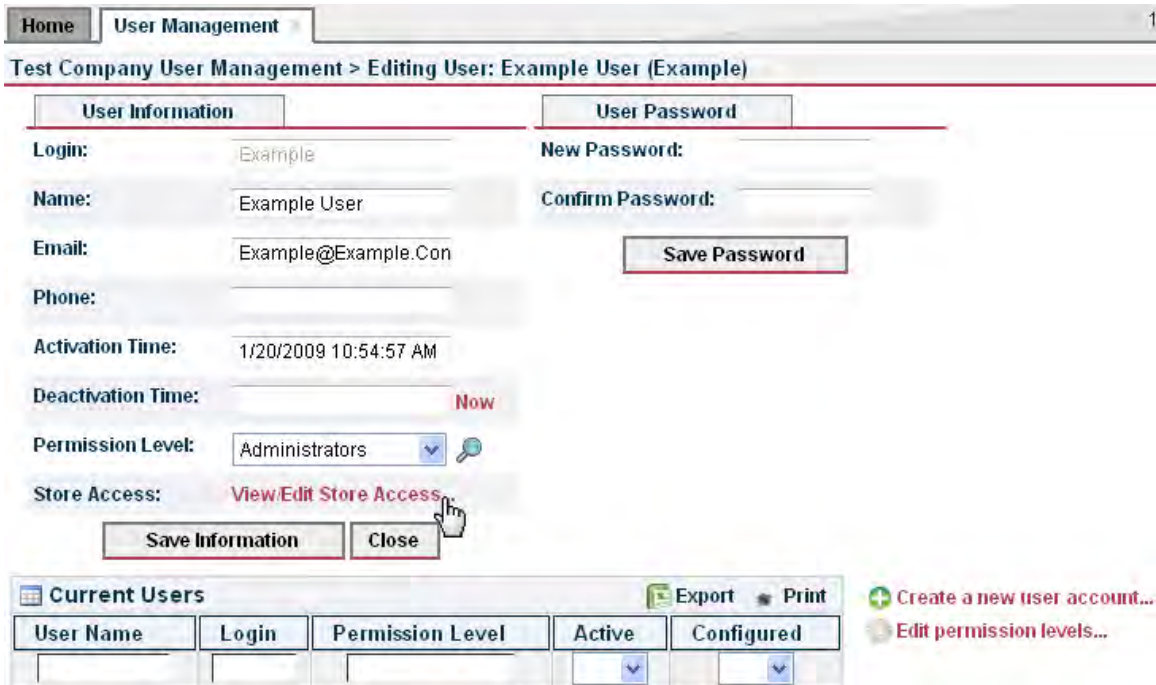
- User Information Section:**
 - Login:** Example
 - Name:** Example User
 - Email:** Example@Example.Con
 - Phone:** (empty field)
 - Activation Time:** 1/20/2009 10:54:57 AM
 - Deactivation Time:** (empty field) with a red "Now" link to its right.
 - Permission Level:** Administrators (dropdown menu) with a blue spyglass icon to its right.
 - Store Access:** View/Edit Store Access...
- User Password Section:**
 - New Password:** (empty field)
 - Confirm Password:** (empty field)
 - Save Password:** (button)

At the bottom of the form, there are two buttons: "Save Information" and "Close".

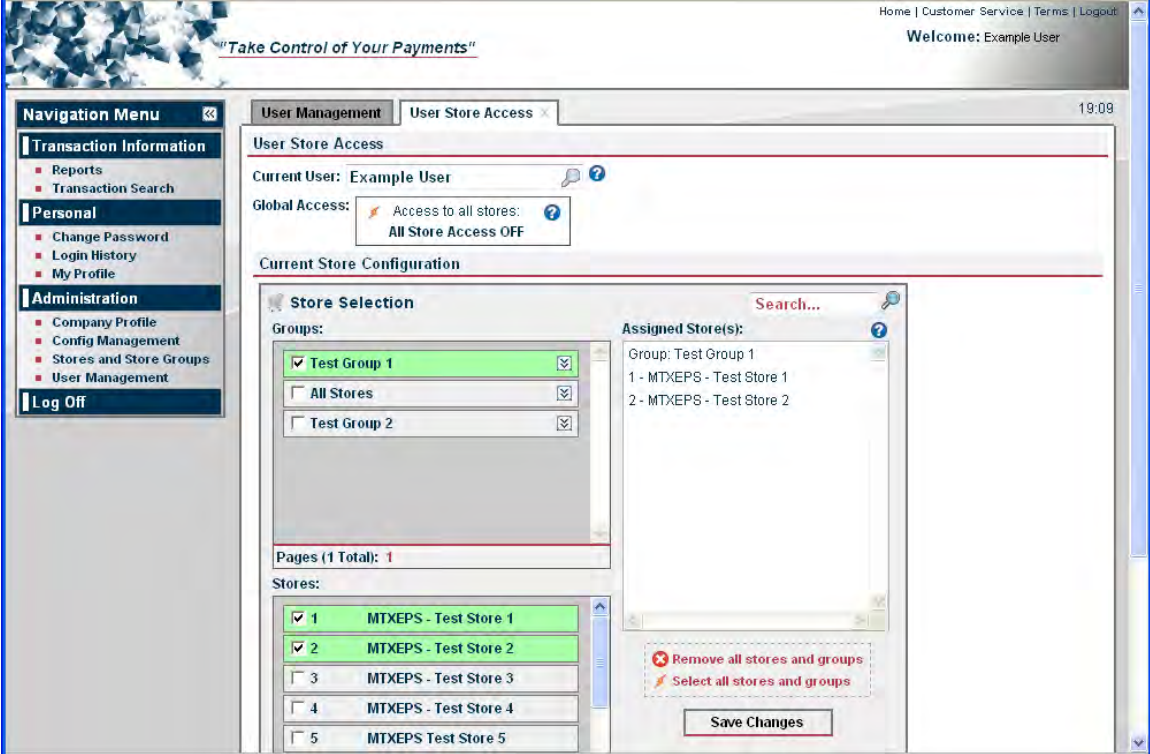
The Permissions list for the currently selected Permission level will be displayed in the center of the screen. You can exit the permission viewing screen by clicking the X in the top right corner of that screen.



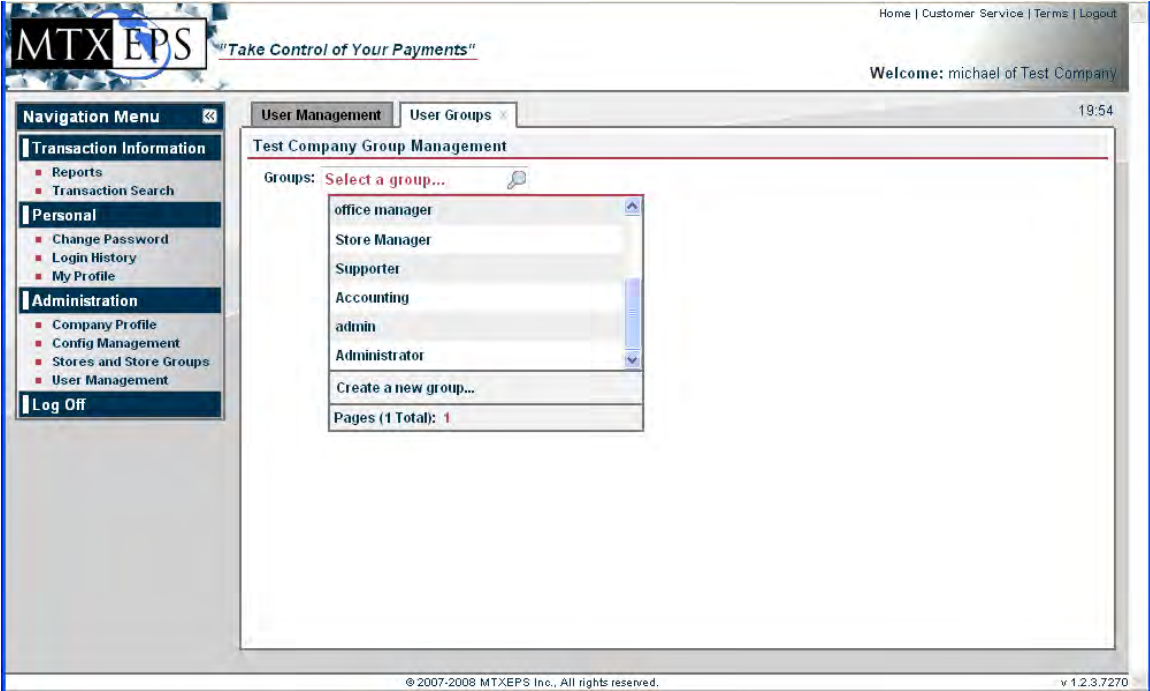
After an account has been created, you can view and edit the store access for the account. The Store access page has been improved by splitting up the Store Groups and individual Store List into separate, scrollable boxes.



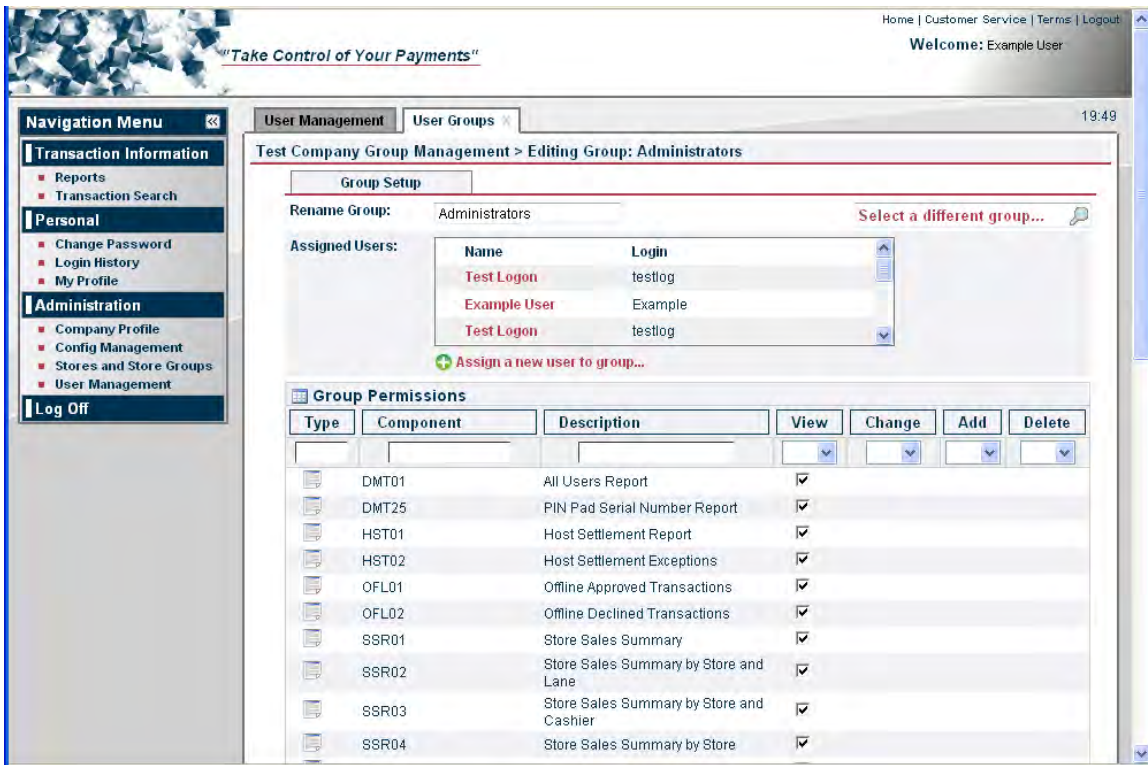
As with all screens that include the store lists, the User Store Access page, loading time has been improved by making the lists into pages that have a limited number of entries. If there are more stores in the company than fit on a single list page, additional pages can be selected and viewed by clicking the pages number on the footer for that list.



The Group Management page has also been streamlined. The Group dropdown box features the multiple page footer, as well as a “Create a new group” option.

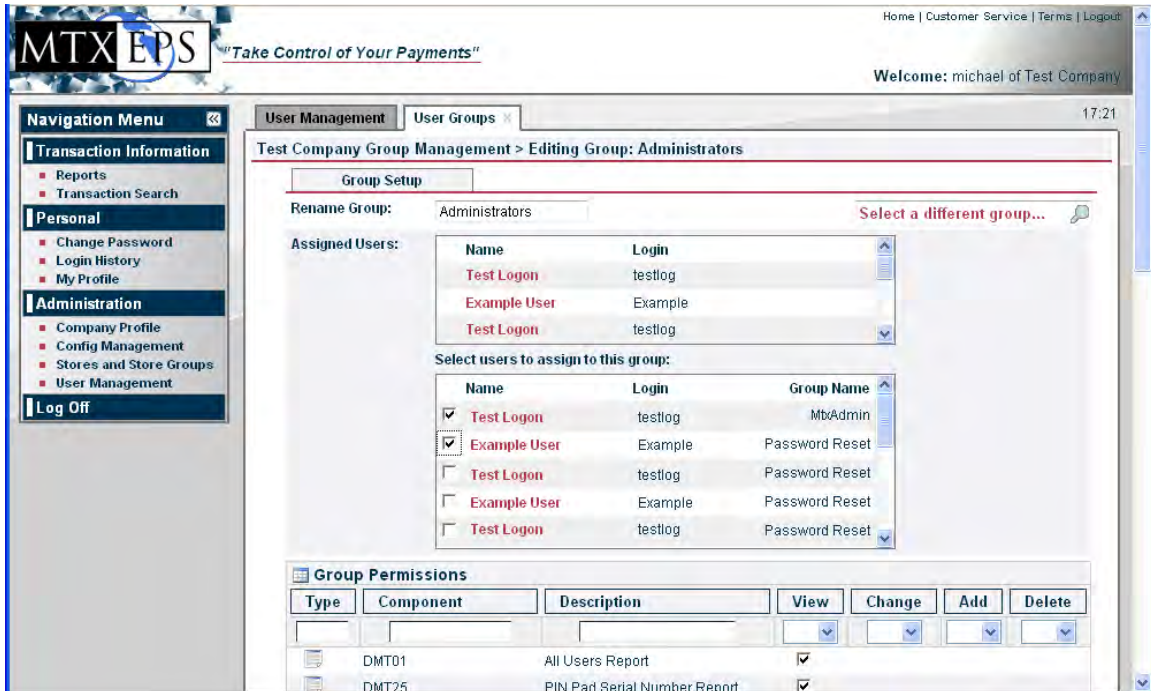


The Role Management (renaming roles) and Activities Management (defining rights) pages have been unified into a single page. This new page allows a clear overview of the Group to easily determine its use and function.



Renaming a group is simply a matter of entering a new name in the Rename Group box, and selecting the Save Group Setup button at the bottom of the page. The ability to easily review other groups is provided by the Select a different group dropdown box on the right. Selecting a different group will display the settings and users for the new group, so be sure to save any changes before switching groups.

Included as new features are the list of currently assigned users, and the ability to assign additional users to the group without having to edit a user's individual profile.



The Assigned Users list displays all users currently assigned to the selected group. An administrator may now review all the users assigned to a group without the need to search through individual profiles.

Users can be added to this group through the assignment box. The list displays all the currently defined users who are not part of the selected group. To assign them to the selected group, simply check the box next to their name and click the Save Group Setup button at the bottom of the page. This will add them to the group, replacing their previous group setting with the current group.

As a note, a user may only be a member of one group at a time; adding them to any group replaces their existing group affiliation.

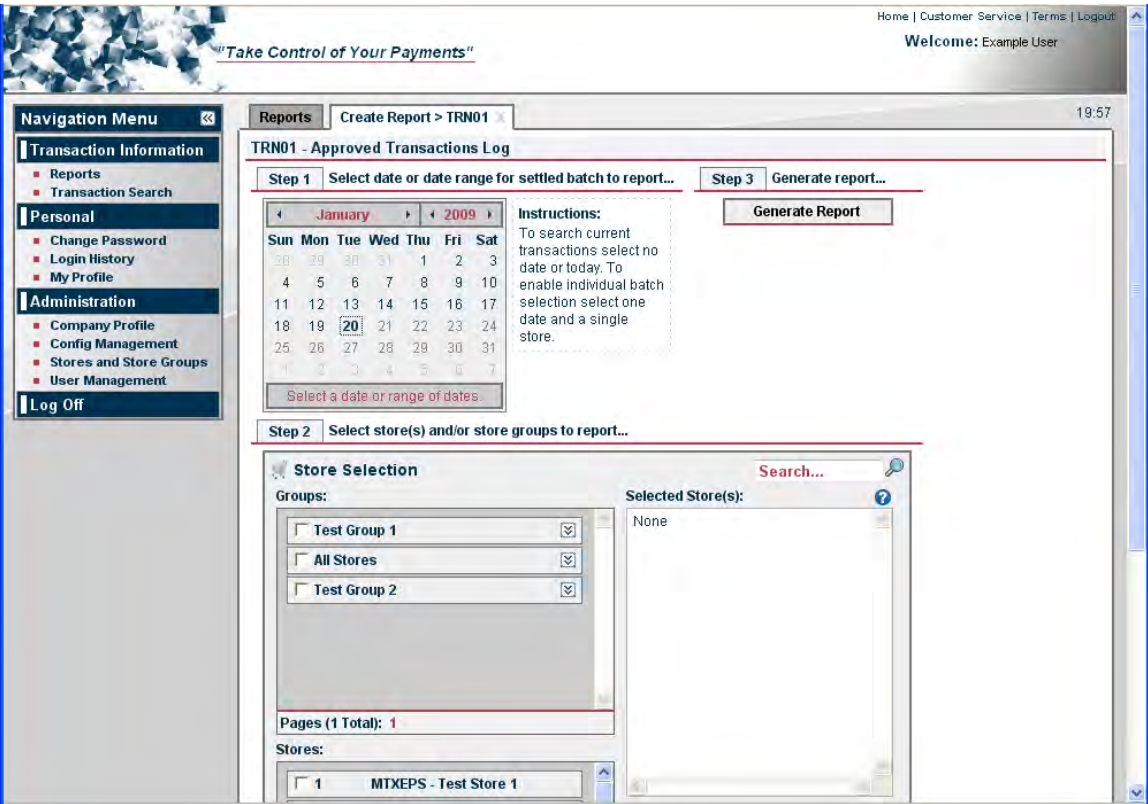
As an additional new enhancement, at the bottom of the screen is the option to delete the current group. To delete a group, it must have no user members, so be certain to reassign any users prior to deletion; selecting the delete option for a populated group will notify you that the group has users assigned and deletion will not be allowed.



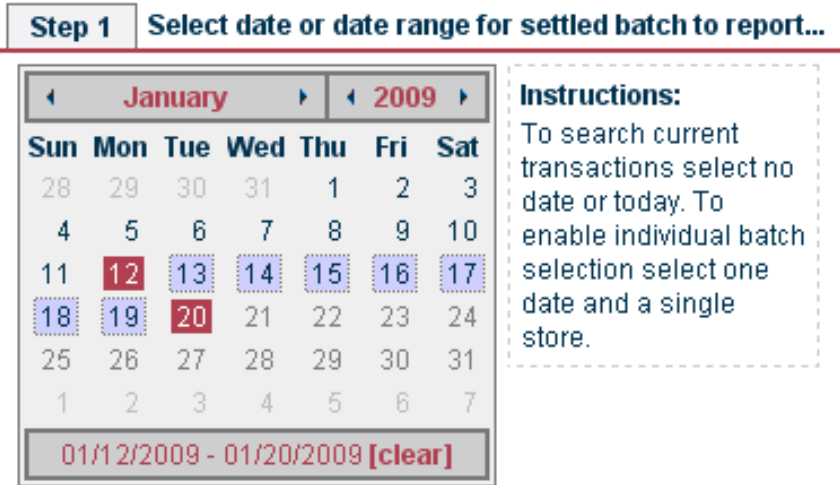
The Save Group Setup button is also at the bottom of the screen. Be sure to save your work before navigating away from the page.

Calendar Control

The Calendar Control used on the Reporting and Transaction Search screens has undergone extensive revision.



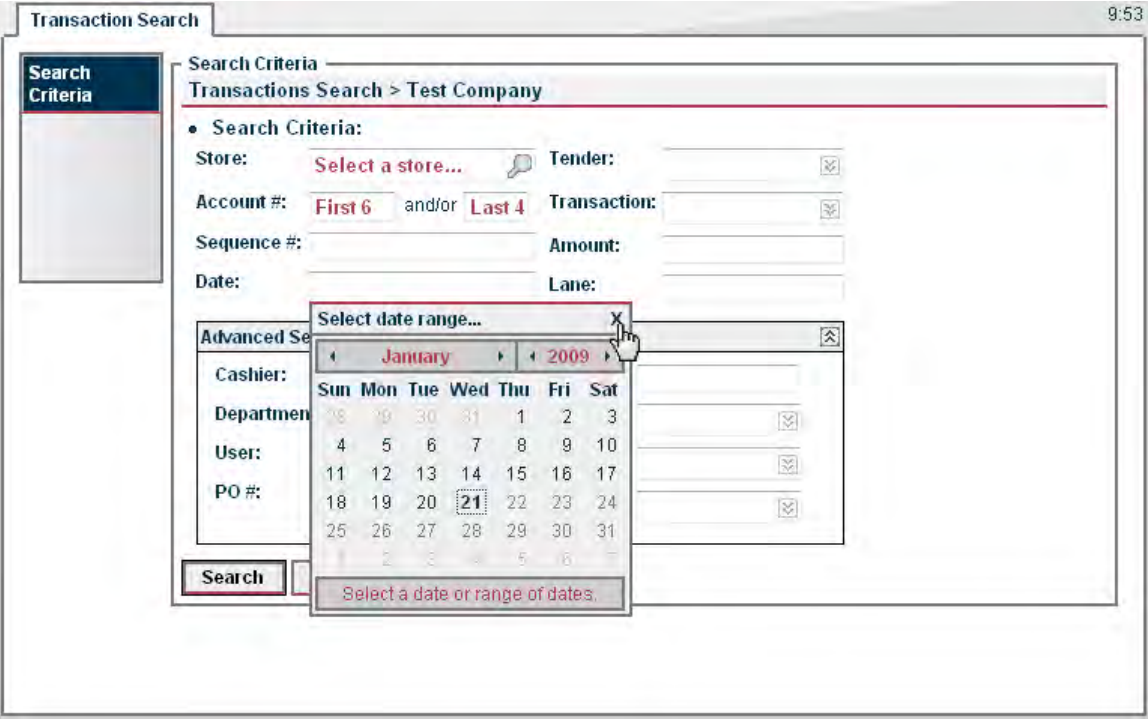
The most visible change is that the calendar control is now comprised of only a single calendar; this calendar is used to select both the starting and ending dates, creating a range visible at the bottom of the control. A user may select the starting date or the ending date in any order.



At the top of the control, both the month and year feature arrow keys allowing the user to quickly cycle backward and forward. The final range selected is displayed at the bottom of the control, along with a [clear] option that allows the user to start the selection over.

The new calendar control allows a date section of up to 400 days in length, and prohibits the selection of invalid future dates.

The same calendar control is used in the Transaction Search page for entering the date rang of the search. On this page, however, the calendar is only temporarily visible when selecting the dates, and after date range selection may be closed by clicking the X in the upper right corner, or by clicking anywhere on the Transaction Search screen whitespace.



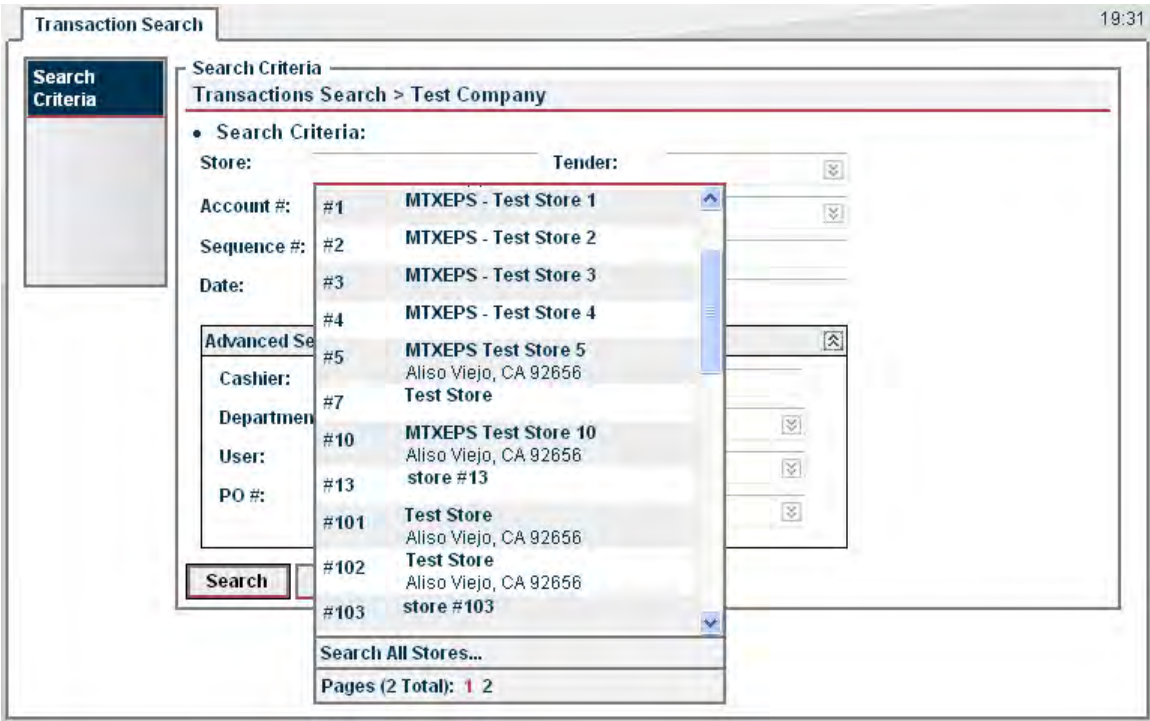
Tab Improvements

To allow greater ease of use, the tabs themselves have been improved with an enlarged X on the right side, allowing the user to close the tab easier than previously.



Store Selection Control

The store selection Control has been optimized in two ways. First, the Search All Stores option is now displayed as a footer on the dropdown box itself. Secondly, to increase web page loading speed for large companies, the store list was broken down into pages.



At the bottom of the dropdown is a footer displaying the number of pages that comprise the store list. To switch to another page, simply select that pages' number in the footer.

In addition to the new paging mechanic, the control itself has been made more responsive, and allows quicker selection of stores.

Store Sales Summary Report

Private Credit and Private Debit totals have been added as separate entries to the Sales Summary reports.

Type	Purchase		Cash Back		Activation / Recharge / Refresh		Voice Authorization		Returns		Net EFT	
	#	Amount	#	Amount	#	Amount	#	Amount	#	Amount	#	Amount
Debit											0	\$0.00
American Express											0	\$0.00
Discover											0	\$0.00
MasterCard	483	\$9,753.25									483	\$9,753.25
VISA	2	\$7.00									2	\$7.00
Other											0	\$0.00
Check Auth											0	\$0.00
Electronic Check											0	\$0.00
Food Stamps											0	\$0.00
Cash Benefits											0	\$0.00
Gift Card											0	\$0.00
..Activation											0	\$0.00
..Deactivation											0	\$0.00
..Recharge											0	\$0.00
Private Debit											0	\$0.00
Private Credit											0	\$0.00
Phone Card											0	\$0.00
..Activation											0	\$0.00
..Refresh											0	\$0.00
Grand Totals	485	\$9,760.25	0	\$0.00							485	\$9,760.25

Page 2 of 2 Run 1/21/2009 4:22:53 PM ©2007, 2008 MTXEPS, Inc. All Rights Reserved **SSR01 (8036)**

Host Response Code display

On reports that display the host response code, previously the internal response code has been displayed. This has been changed to show the response code returned by the end host. These codes are more useful in researching a transaction than the internal codes are.

The screenshot shows a web application interface with a table of transactions. The table has columns for Date, Time, Store, Transaction Type, Amount, and Host Response Code. A blue oval highlights the 'TST-SHA-66' response code in the 'Host Response Code' column for the first transaction.

Date	Time	Store	Transaction Type	Amount	Host Response Code			
8/4/2010	11:53:30 AM	01	102	AX Purchase	371449...8431	TST-SHA-66	000019	\$96.66
host text : ADDITIONAL ID NEEDED								
Velocity info :								
8/4/2010	12:09:24 PM	01	102	Debit Purchase	401119...0071	TST-SHA-66	000024	\$96.66
host text : ADDITIONAL ID NEEDED								
Velocity info :								
8/4/2010	12:12:02 PM	01	102	Debit Purchase	401119...0071	TST-SHA-66	000025	\$96.66
host text : ADDITIONAL ID NEEDED								
Velocity info :								
8/4/2010	12:15:59 PM	01	102	Debit Purchase	401119...0071	TST-SHA-66	000026	\$96.66
host text : ADDITIONAL ID NEEDED								
Velocity info :								
8/4/2010	12:16:09 PM	01	102	Debit Purchase	401119...0071	TST-SHA-66	000027	\$96.66
host text : ADDITIONAL ID NEEDED								
Velocity info :								
8/4/2010	12:22:51 PM	01	102	EBT Food Stamp Purchase	601823...3829	TST-SHA-66	000031	\$96.66
host text : ADDITIONAL ID NEEDED								
Velocity info :								
8/4/2010	12:22:57 PM	01	102	EBT Food Stamp Purchase	601823...3829	TST-SHA-66	000032	\$96.66
host text : ADDITIONAL ID NEEDED								
Velocity info :								

Page 1 of 27 Run 1/21/2009 3:57:31 PM ©2007, 2008 MTXEPS, Inc, All Rights Reserved

Improve Signature Capture & Receipt Printability

To improve the ability to print out and photocopy the electronic signature and receipt displayed on the Web GUI, the signature itself has increased in darkness so that it is comparable with the receipt text.

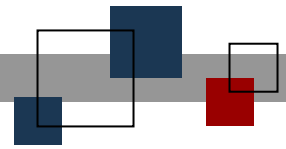
```

                Sig Cap
                XXXXXXXXXXXX
                City, State Zipcode
                (555) 555-1212
Purchase   $      4.44

VISA                #SXXXXXXXXXXXXX0005
Auth # 955481      Exp Date **/**
Lane # 04          Checker # 1
01/19/09 09:49    Ref/Seq # 040064
Mrch=000000 Term=001 IC=CC
WinEPS Sequence # 040064

                123456789
Signature: _____
                I AGREE TO PAY ABOVE TOTAL AMOUNT
                ACCORDING TO CARD ISSUER AGREEMENT
(MERCHANT AGREEMENT IF CREDIT VOUCHER)
                Test Store 13
                Footer Info Text

```

© StoreNext Retail Technologies LLC 2009

StoreNext Retail Technologies LLC endeavors to ensure that the information in this document is correct and fairly stated but does not accept liability for any error or omission.

The development of StoreNext products and services is continuous and published information may not be up to date. It is important to check the current position with StoreNext. This document is not part of a contract or license save insofar as may be expressly agreed.