

-  *Connected Payments*
-  *Release Notes*
-  *Release 2.14*
- 
- 

## Connected Payments Release Notes

<b>Date of Issue</b>	<b>Product Identification Number</b>	<b>Part Number</b>	<b>Brief Description</b>
February 2008	45001/112	89000428	Release 2.6
June 2008	45001/112	89000445	Release 2.7
July 2008	45001/112	89000460	Release 2.8
September 2008	45001/112	89000474	Release 2.9
October 2008	45001/112	89000477	Release 2.10
December 2008	45001/112	89000486	Release 2.11
January 2009	45001/112	89000487	Release 2.12
May 2009	45001/112	89000513	Release 2.13
July 2009	45001/112	89000519	Release 2.14

**© Copyright StoreNext Retail Technologies LLC 1995-2009  
All rights reserved**

This publication is protected by federal copyright law. No part of this publication may be reproduced or transmitted into any human or computer language in any form or by any means, stored in a retrieval system, transmitted, redistributed, translated or disclosed to third parties, or de-compiled in any way including, but not limited to, photocopy, photograph, electronic, mechanical, magnetic or manual without the express written permission of StoreNext Retail Technologies LLC or its licensors, if any. This document, notwithstanding the above, may be distributed in electronic or printed form to personnel who are employed by either (1) a StoreNext customer of the subject system of this document or (2) personnel from an authorized StoreNext dealer of the subject system of this document. All copies, so distributed and/or so authorized, shall contain a full copy of this copyright notice.

StoreNext Retail Technologies LLC endeavors to ensure that the information in this document is correct and fairly stated but does not accept liability for any error or omission. StoreNext Retail Technologies LLC makes no representation or warranties with respect to the contents hereof, and specifically disclaims any implied warranties of merchantability or fitness for a particular purpose or non-infringement. No commitments by StoreNext or its suppliers are made from this documentation which is provided for information only.

Development of StoreNext products and documentation is continuous: StoreNext Retail Technologies LLC reserves the right to revise this publication and to make changes from time to time in the contents hereof or in the products herein described or discussed without notice and without any obligation of StoreNext Retail Technologies LLC to notify any person or organization of such revision or changes. Information published in this document will likely become obsolete over time and it is recommended that users regularly check for updates and newer versions.

StoreNext Retail Technologies LLC has prepared this manual for use by users, authorized third parties and personnel of StoreNext Retail Technologies LLC as a guide to the proper installation, operation, customization and/or maintenance of StoreNext Retail Technologies LLC equipment and software. The drawings and specifications contained herein are the property of StoreNext Retail Technologies LLC and/or its licensors.

Third-party products, services, or company names referenced in this document may be trademarked or copyrighted by their respective owners, and are for identification purposes only.

Copyrights, trademarks and license agreements shall be governed and construed in accordance with the laws of the State of Texas and the Federal Arbitration Act, and shall benefit Retailix, its successors, and assigns.

Address comments and corrections to:

**StoreNext Retail Technologies LLC  
Software Program Director  
6100 Tennyson Parkway, Suite 130  
Plano, Texas 75024**

## Table of Contents

<b>SECTION 1</b> .....	<b>4</b>
<b>Connected Payments Fixed Issues and Enhancements</b> .....	<b>4</b>
<b>Server Changes</b> .....	<b>4</b>
<b>Transaction Processing Changes</b> .....	<b>7</b>
<b>Stand Beside Solutions</b> .....	<b>8</b>
VeriFone Vx570 .....	8
<b>Host Changes</b> .....	<b>9</b>
ACI .....	9
ADS.....	9
Chase Paymentech .....	9
Concord: H&C Format .....	10
Elavon .....	10
MPS (Fifth Third) .....	10
Shazam.....	10
Solupay/Echo.....	10
<b>SECTION 2</b> .....	<b>12</b>
<b>New Features</b> .....	<b>12</b>
<b>Store Close Time</b> .....	<b>12</b>
Host Parameters: Host Definition Tab .....	12
<b>Voided Totals Report</b> .....	<b>14</b>
Voided Transactions Totals .....	14
<b>Added Gift Cards to ACI Host</b> .....	<b>16</b>
ACI .....	16
Additional Information .....	17
<b>Support Private Credit Force and Private Credit Payment to ADS</b> .....	<b>18</b>
<b>ADS</b> .....	<b>18</b>
Additional Information .....	19

# Section 1

## Connected Payments Fixed Issues and Enhancements

### Server Changes

Enhancement	Description
1. Update Store Close Time from Configuration Manager	<ul style="list-style-type: none"> <li>• Enhancement</li> <li>• The Configuration Manager application has been enhanced to allow setting the store's End of Day time. Previously changing this setting required contacting MTX Support and requesting a new time be set.</li> <li>• The EOD time has two settings: The user may specify a time for the store's reports to be cut over for End of Day processing, or the User may specify a Manual EOD for store locations that use the SendMessageSEPS.exe to coordinate their EOD time.</li> </ul>
2. Configuration Manager supports View-only right	<ul style="list-style-type: none"> <li>• Enhancement</li> <li>• A new right has been added to the Web Services to allow access to the Configuration Manager in read-only mode, so that users can review the configurations settings, but not make any changes.</li> <li>• During the upgrade from the previous version, user groups that had editing rights will retain editing rights and user groups that did not have access to the configuration manager will not receive access. Administrators may update groups with the new right.</li> </ul>
3. Group deletion, GUI crash	<ul style="list-style-type: none"> <li>• Fixed</li> <li>• Corrected an issue where if a group was deleted and then a new group created with the same name, the Web Services GUI would crash.</li> </ul>
4. Back button cause crash with closed tabs	<ul style="list-style-type: none"> <li>• Fixed</li> <li>• Corrected an issue where, if tabs were closed and then the browser's back button was used, the Web Services GUI would crash.</li> </ul>

Section 1 – Connected Payments Fixed Issues and Enhancements  
Server CChangesC

Enhancement	Description
5. Generate Report button bug	<ul style="list-style-type: none"> <li>• Fixed</li> <li>• The button to generate reports had a clickable area around it that, when clicked, seemed to act as if a report was being generated, however no report was actually created.</li> <li>• The clickable area around the button has been eliminated, so that now when the button is clicked, it will always generate a report properly.</li> </ul>
6. Transaction Search header display issue	<ul style="list-style-type: none"> <li>• Fixed</li> <li>• The header information for the Transaction Search results was not correctly displayed when viewing the page with Internet Explorer 8. The header has been updated to function properly with IE8.</li> </ul>
7. Add new Columns to the Voided Totals Report	<ul style="list-style-type: none"> <li>• Enhancement</li> <li>• Two new columns for Voided Activations and Voided Deactivations have been added to the Voided Transactions Totals (TRN03) report.</li> <li>• The Voided Activations Column will have sections for Count and Amount.</li> <li>• The Voided Deactivations Column will have sections for Count and Amount.</li> </ul>
8. Issue with User Management causing exception	<ul style="list-style-type: none"> <li>• Fixed</li> <li>• In some instances of creating a User Group and then moving back to creating a new user account, occasionally this would cause an application error and log the user out. The application error has been corrected.</li> </ul>
9. Remove Settlement Carry Over and Cut off from transaction search	<ul style="list-style-type: none"> <li>• Fixed</li> <li>• On the transaction search page, Settlement Carry Over and Settlement Cut Off were incorrectly added as options to the tender type selection drop down. These options have been removed.</li> </ul>
10. Enhance Configured Stores Report	<ul style="list-style-type: none"> <li>• Enhancement</li> <li>• In the Store Setup Report (DMT10), the Check Services column will only be populated with service information for the Check tender type, and only if a service is currently defined for check processing.</li> </ul>
11. Wrap "Approved Cash Back" label to improve spacing	<ul style="list-style-type: none"> <li>• Fixed</li> <li>• On the Transaction Search Details the label text for the Approved Cash Back has been formatted across two lines so that the display of the receipt graphic is no longer obstructed.</li> </ul>

Enhancement	Description
12. Update Transaction Search with new controls	<p>Enhancement</p> <p>The Transaction Search page has been updated with several enhancements to improve user experience.</p> <p>Previously the tabs for Search Results / Search Criteria / Transaction Detail were formatted as horizontal tabs; this has been revised to use vertical tabs.</p> <p>Spacing was increased in key areas to improve visibility.</p> <p>The results grid will be expand based on available space.</p> <p>Interaction has been improved with IE6 to provide the same hover effects on the results grid as IE7 and IE 8 provide.</p> <p>All grids, combo-boxes and global styles have been updated to provide improved cross-browser functionality.</p>

## Transaction Processing Changes

Enhancement	Description
13. -No Change to Transaction Processing -	<ul style="list-style-type: none"><li data-bbox="570 394 639 415">• ---</li></ul>

## Stand Beside Solutions

### VeriFone Vx570

Enhancement	Description
1. -No Change to Vx570 -	<ul style="list-style-type: none"><li data-bbox="565 464 641 485">• ---</li></ul>

## Host Changes

### ACI

Enhancement	Description
1. Add Gift Card to ACI	<ul style="list-style-type: none"> <li>• Enhancement</li> <li>• Gift card support was added to the ACI host.</li> <li>• For General Gift Cards, the following transactions types are supported: <ul style="list-style-type: none"> <li>Activate</li> <li>Recharge</li> <li>Reload</li> <li>Return</li> <li>Purchase</li> <li>Force</li> <li>Voids of above</li> </ul> </li> <li>• For Blackhawk Gift Cards, the following transactions types are supported: <ul style="list-style-type: none"> <li>Activation</li> <li>Deactivation</li> <li>Voids of above</li> </ul> </li> </ul>

### ADS

Enhancement	Description
2. Support additional ADS tenders	<ul style="list-style-type: none"> <li>• Enhancement</li> <li>• Support was added for two additional transaction types: Private Credit Force and Private Credit Payment.</li> <li>• The Private Credit Force transaction will be processed as an advice message.</li> <li>• Private Credit Payment is processed as a Private Credit Recharge transaction type.</li> </ul>

### Chase Paymentech

Enhancement	Description
1. -No Change to Host -	<ul style="list-style-type: none"> <li>• ---</li> </ul>

### Concord: H&C Format

Enhancement	Description
1. Send Var ID	<ul style="list-style-type: none"> <li>• Enhancement</li> <li>• Optional Data Element 'I' "el" will now include a Var ID value of TMT099.</li> </ul>

### Elavon

Enhancement	Description
2. -No Change to Host -	<ul style="list-style-type: none"> <li>• ---</li> </ul>

### MPS (Fifth Third)

Enhancement	Description
1. Received Gift Card Return totals are not stored	<ul style="list-style-type: none"> <li>• Enhancement</li> <li>• On the Host Settlement report for The MPS (5/3), the Gift Card Returns value will now always show \$0, even if the host returned a count/amount for this processing code.</li> </ul>

### Shazam

Enhancement	Description
1. -No Change to Host -	<ul style="list-style-type: none"> <li>• ---</li> </ul>

### Solupay/Echo

Enhancement	Description
1. -No Change to Host -	<ul style="list-style-type: none"> <li>• ---</li> </ul>



# Section 2

## New Features

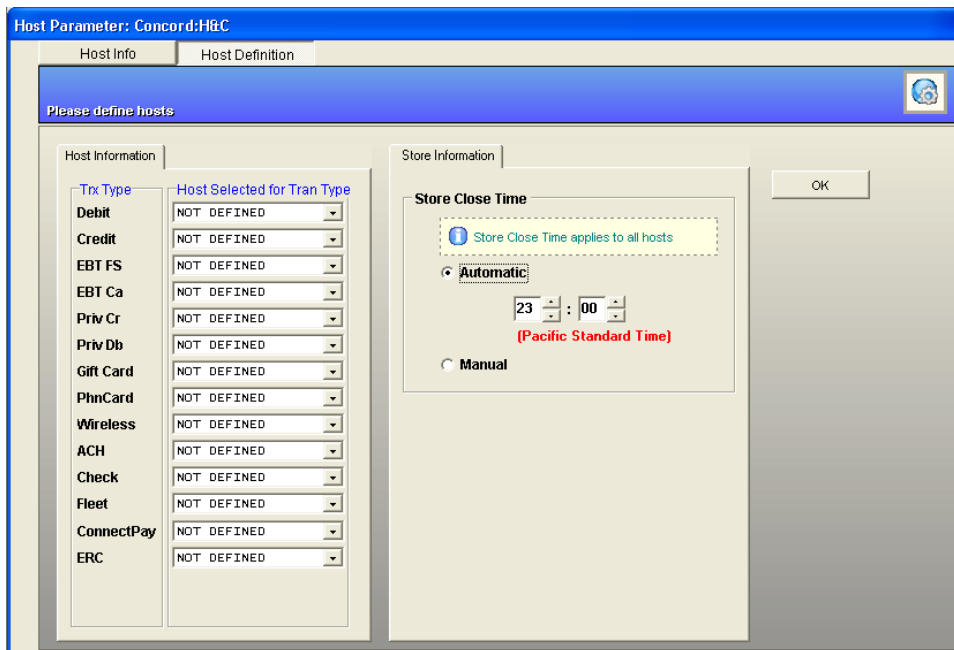
### Store Close Time

The Configuration Manager application has been enhanced to allow setting the store's End of Day time. Previously changing this setting required contacting MTX Support and requesting a new time be set.

The EOD time has two settings: The user may specify a time for the store's reports to be cut over for End of Day processing, or the User may specify a Manual EOD for store locations that use the SendMessageSEPS.exe to coordinate their EOD time.

### Host Parameters: Host Definition Tab

The host dropdown boxes display all the available hosts currently supported. To configure a host, simply use the dropdown box next to the tender type you want to configure. Select a host for each tender type that will be processed by the store.



Once all hosts are defined, click Ok to implement the changes and to open the Host Info Tab.

<b>Property</b>	<b>Description</b>
Host Selected for Tran Type	Use the host dropdown to select the host to use for each tender type.
Store Close Time	Automatic: Store's End of Day and report cut over will occur at the selected time.  Manual: The store will not cut over for End of Day automatically and must instead be SendMessageSEPS.exe to coordinate the EOD time for the POS.

## Voided Totals Report

Two new columns for Voided Activations and Voided Deactivations have been added to the Voided Transactions Totals (TRN03) report.

The Voided Activations Column will have sections for Count and Amount. The Voided Deactivations Column will have sections for Count and Amount.

## Voided Transactions Totals

This report displays a list of all the stores selected along with a summary total of how many voids occurred in total for that group of stores.

Store	Address	Phone
1 - MTXEPS - Test Store 1		

Tender	Voided Purchases		Voided Returns		Voided Activations		Voided Deactivations	
	Count	Amount	Count	Amount	Count	Amount	Count	Amount
Debit	11	\$95.41						
Discover	2	\$105.42						
EBT Cash	4	\$40.00						
EBT Food Stamp	4	\$34.44	1	(\$10.00)				
Gift Card	3	\$21.22	2	(\$20.00)	7	\$35.17		
Visa	8	\$363.54	3	(\$25.44)				
<b>Grand Totals</b>	<b>32</b>	<b>\$660.03</b>	<b>6</b>	<b>(\$55.44)</b>	<b>7</b>	<b>\$35.17</b>		

Page 1 of 1 Run 6/29/2009 4:34:32 PM ©2007 - 2009 MTXEPS, Inc. All Rights Reserved TRN03 (9174)

This report features the following columns:

Report Headers	Description
Store	The store's name
Address	Store address
Phone	Store Phone Number
Tender	This column shows a list of all the tenders for which voids occurred. If a tender has no voids associated with it for the time period the report is for, the tender will not be listed.
Voided Purchases	The '#' column displays a count of the number of voided Purchases performed by each card type.  The Amount column presents a sum of the total dollar amount of the voided transactions, by card type.
Voided Returns	The '#' column displays a count of the number of voided Returns performed by each card type.  The Amount column presents a sum of the total dollar amount of the voided transactions, by card type.
Voided Activations	The '#' column displays a count of the number of voided Activations performed by each card type.  The Amount column presents a sum of the total dollar amount of the voided transactions, by card type.

Report Headers	Description
Voided Deactivations	The '#' column displays a count of the number of voided Deactivations performed by each card type.  The Amount column presents a sum of the total dollar amount of the voided transactions, by card type.

The summary section at the bottom displays the page number and the date and time the report was run as well as the report number on the right hand side.

## Added Gift Cards to ACI Host

Gift card support was added to the ACI host.

For General Gift Cards, the following transactions types are supported:

- Activate
- Recharge
- Reload
- Return
- Purchase
- Force
- Voids of above

For Blackhawk Gift Cards, the following transactions types are supported:

- Activation
- Deactivation
- Voids of above

### ACI

	Purchase / GC Redeem	Purch w/ CB	Cash Back Only	Return	Force [Voice/ Voucher]	Return Voucher	Balance Inquiry	Activation	Deactivation	Recharge	PreAuth / Completion
ACH	X	X	X	X	X	NA	NA	NA	NA	NA	X
Check (Electronic Check Conversion)	X	X	X	NA	X	NA	NA	NA	NA	NA	NA
Check (Standard)	B	B	B	NA	X	NA	NA	NA	NA	NA	NA
Connect Pay	X	NA	NA	X	NA	NA	NA	NA	NA	NA	NA
Credit Card	X	X	X	X	X	NA	NA	NA	NA	NA	X
Credit FSA	X	NA	NA	X	NA	NA	NA	NA	NA	NA	X
Debit	X	X	X	X	NA	NA	NA	NA	NA	NA	X
EBT – Cash	X	X	X	X	X	NA	X	NA	NA	NA	X
EBT – Food Stamp	X	NA	NA	X	X	X	X	NA	NA	NA	NA
Fleet	X	NA	NA	X	X	NA	NA	NA	NA	NA	X
Gift Card (General)	B (V)	NA	NA	B (V)	B (V)	NA	O	B (V)	X	B (V)	X
Gift Card (Blackhawk)	X	NA	NA	X	X	NA	X	B (V)	B (V)	X	X
Phone Card	NA	NA	NA	NA	NA	NA	NA	X	X	X	NA
Private Credit	X	X	X	X	NA	NA	NA	NA	NA	NA	X
Private Debit	B (V)	B (V)	B (V)	B (V)	NA	NA	NA	NA	NA	NA	X
Wireless	NA	NA	NA	NA	NA	NA	NA	X	X	X	NA

**Legend:**

<b>O</b>	– Online only
<b>B</b>	– Both On & Offline
<b>B/Disc</b>	– As <b>B</b> , with Discover Card only
<b>(V)</b>	– Transaction Can be Voided
<b>(VO)</b>	–Can be Voided Online Only
<b>X</b>	– Not Supported
<b>NA</b>	– Not Applicable to Transaction Type

## Additional Information

The following check types are supported:

- 01 Check Type
- 00 Personal Check
- 01 Payroll Check
- 02 Government Check
- 03 Business Check
- 05 WIC Check

The ACI host supports the Reload transaction type for General Gift Cards.

## Support Private Credit Force and Private Credit Payment to ADS

Support was added for two additional transaction types: Private Credit Force and Private Credit Payment.

The Private Credit Force transaction will be processed as an advice message. Private Credit Payment is processed as a Private Credit Recharge transaction type.

### ADS

	Purchase / GC Redeem	Purch w/ CB	Cash Back Only	Return	Force [Voice/ Voucher]	Return Voucher	Balance Inquiry	Activation	Deactivation	Recharge	PreAuth / Completion
ACH	X	X	X	X	X	NA	NA	NA	NA	NA	X
Check (Electronic Check Conversion)	X	X	X	NA	X	NA	NA	NA	NA	NA	NA
Check (Standard)	X	X	X	NA	X	NA	NA	NA	NA	NA	NA
Connect Pay	X	NA	NA	X	NA	NA	NA	NA	NA	NA	NA
Credit Card	X	X	X	X	X	NA	NA	NA	NA	NA	X
Credit FSA	X	NA	NA	X	NA	NA	NA	NA	NA	NA	X
Debit	X	X	X	X	NA	NA	NA	NA	NA	NA	X
EBT – Cash	X	X	X	X	X	NA	X	NA	NA	NA	X
EBT – Food Stamp	X	NA	NA	X	X	X	X	NA	NA	NA	NA
Fleet	X	NA	NA	X	X	NA	NA	NA	NA	NA	X
Gift Card (General)	X	NA	NA	X	X	NA	X	X	X	X	X
Gift Card (Blackhawk)	X	NA	NA	X	X	NA	X	X	X	X	X
Phone Card	NA	NA	NA	NA	NA	NA	NA	X	X	X	NA
Private Credit	O	X	X	O	B	NA	NA	NA	NA	O	X
Private Debit	X	X	X	X	NA	NA	NA	NA	NA	NA	X
Wireless	NA	NA	NA	NA	NA	NA	NA	X	X	X	NA

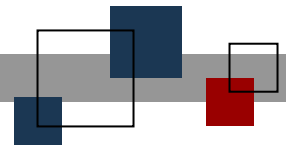
Legend:	
O	– Online only
B	– Both On & Offline
B/Disc	– As B, with Discover Card only
(V)	– Transaction Can be Voided
(VO)	– Can be Voided Online Only
X	– Not Supported
NA	– Not Applicable to Transaction Type

### **Additional Information**

ADS is a Terminal capture batch settled host. Transaction information is compiled during normal processing and forward to ADS during the end of day settlement processing. Merchant accounts are credited for sales based on the data received during settlement.







**© StoreNext Retail Technologies LLC 2009**

StoreNext Retail Technologies LLC endeavors to ensure that the information in this document is correct and fairly stated but does not accept liability for any error or omission.

The development of StoreNext products and services is continuous and published information may not be up to date. It is important to check the current position with StoreNext. This document is not part of a contract or license save insofar as may be expressly agreed.