

-  *Connected Payments*
-  *Release Notes*
-  *Release 2.6*
- 
- 



Connected Payments Release Notes

Date of Issue	Product Identification Number	Part Number	Brief Description
February 2008	45001/112	89000428	Release 2.6

**© Copyright StoreNext Retail Technologies LLC 1995-2008
All rights reserved**

This publication is protected by federal copyright law. No part of this publication may be reproduced or transmitted into any human or computer language in any form or by any means, stored in a retrieval system, transmitted, redistributed, translated or disclosed to third parties, or de-compiled in any way including, but not limited to, photocopy, photograph, electronic, mechanical, magnetic or manual without the express written permission of StoreNext Retail Technologies LLC or its licensors, if any. This document, notwithstanding the above, may be distributed in electronic or printed form to personnel who are employed by either (1) a StoreNext customer of the subject system of this document or (2) personnel from an authorized StoreNext dealer of the subject system of this document. All copies, so distributed and/or so authorized, shall contain a full copy of this copyright notice.

StoreNext Retail Technologies LLC endeavors to ensure that the information in this document is correct and fairly stated but does not accept liability for any error or omission. StoreNext Retail Technologies LLC makes no representation or warranties with respect to the contents hereof, and specifically disclaims any implied warranties of merchantability or fitness for a particular purpose or non-infringement. No commitments by StoreNext or its suppliers are made from this documentation which is provided for information only.

Development of StoreNext products and documentation is continuous: StoreNext Retail Technologies LLC reserves the right to revise this publication and to make changes from time to time in the contents hereof or in the products herein described or discussed without notice and without any obligation of StoreNext Retail Technologies LLC to notify any person or organization of such revision or changes. Information published in this document will likely become obsolete over time and it is recommended that users regularly check for updates and newer versions.

StoreNext Retail Technologies LLC has prepared this manual for use by users, authorized third parties and personnel of StoreNext Retail Technologies LLC as a guide to the proper installation, operation, customization and/or maintenance of StoreNext Retail Technologies LLC equipment and software. The drawings and specifications contained herein are the property of StoreNext Retail Technologies LLC and/or its licensors.

Third-party products, services, or company names referenced in this document may be trademarked or copyrighted by their respective owners, and are for identification purposes only.

Copyrights, trademarks and license agreements shall be governed and construed in accordance with the laws of the State of Texas and the Federal Arbitration Act, and shall benefit Retailix, its successors, and assigns.

Address comments and corrections to:

StoreNext Retail Technologies LLC
Software Program Director
6100 Tennyson Parkway
Suite 130
Plano, Texas 75024

Table of Contents

SECTION 1	4
Connected Payments Fixed Issues and Enhancements	4
Server Changes	4
Host Changes	7
Chase Paymentech	7
Concord: H&C Format	7
MPS (Fifth Third)	7
Shazam.....	8
Solupay/Echo.....	8
SECTION 2	9
New Features	9
Enhanced Configuration Management GUI	9
Export Lane Configuration	9
Import WinEPS Configuration.....	10
Copy Lane Configuration	12
Delete Configuration	14
Rename Configuration.....	15
Enhanced Transaction Search	16
Enhanced Store Access Control	19

Section 1

Connected Payments Fixed Issues and Enhancements

Server Changes

Enhancement	Description
1. Automated log file availability	<ul style="list-style-type: none"> • Enhancement • OpenEPS has been enhanced to deliver log files to Connected Payments when running in the OpenEPS Direct environment. This gives MTX service desk personnel a tool to directly download an available log file from the store without the need for store personnel to intervene. • The log file is loaded to Connected Payments and then made available to MTX personal for review. • Log files are not uploaded daily, they are only uploaded when a specific upload command is sent; as such this improvement will not significantly impact network load. • The feature requires OpenEPS 825 or higher
2. Pre-auth and Completion Report	<ul style="list-style-type: none"> • Enhancement • A new report is available and displays Pre-Authorization transactions and Completion transactions.
3. Enhanced Configuration Management web page	<ul style="list-style-type: none"> • Enhancement • Warning text has been added to the Configuration Management download screen and program; this text is designed to aid the user in determining if the application they are downloading is legitimate.

Section 1 – Connected Payments Fixed Issues and Enhancements
Server Changes

Enhancement	Description
4. Enhance Transaction Search	<ul style="list-style-type: none"> • Enhancement <p>Multiple improvements were made to the Transaction Search feature.</p> <ul style="list-style-type: none"> • The following searchable fields have been added: PO/Ref# Lane Number Cashier Number Department • For clarity, all references to STAN (System Trace Audit Number) have been revised to Seq # (transaction Sequence Number). • The date interface has been improved to use calendar controls instead of text boxes for search dates entry. • The grid view control has been updated to include sortable columns. • The Approved box no includes a green checkmark if the transaction was approved and no check if the transaction was declined. • A print button has been added that will popup a windows with a printable view of the search results. • Fields used as search criteria will be displayed in the search results. • The ability to determine which columns you want displayed or printed in your search results has been added.
5. Batch number moved to header	<ul style="list-style-type: none"> • Enhancement • The batch number has been removed from the sequence number field and has been placed as a header. This header separates the information from each batch.
6. Configuration Management GUI Enhancements	<ul style="list-style-type: none"> • Enhancement • The Configuration Management GUI has been improved. New configuration Import, Export and Copying features are available, as well as the ability to rename and delete store and lane configurations. • Additional details on these features are included in Section 2.
7. Return Response Code to OpenEPS	<ul style="list-style-type: none"> • Enhancement • A new field has been added to the transaction response message sent back to OpenEPS that will contain the destination host response code. This code will be sent back, if available, to allow OpenEPS additional information when processing offline transactions.
8. Fix Spacing on Trn01a Report	<ul style="list-style-type: none"> • Enhancement • The spacing for the Auth Code column and department field column has been adjusted on report Trn01a to better display their contents.

Section 1 – Connected Payments Fixed Issues and Enhancements
 Server Changes

Enhancement	Description
9. Store Access	<ul style="list-style-type: none"> • Enhancement • The ability to restrict a users access to a limited amount of stores within a company has been added.
10. Update button text	<ul style="list-style-type: none"> • Enhancement • The text for the Transaction Reporting selection button on the initial logon page of www.servereps.com has been updated to read "Web Services" to reflect the broader array of services available.
11. Update Copyright date	<ul style="list-style-type: none"> • Update • The copyright date on the Connected Payments reports has been updated to 2008.
12. Update "Flags" legend for Connected Payments Reports	<ul style="list-style-type: none"> • Updated <p>The legend on the Connected Payments reports has been updated to display the following:</p> <ul style="list-style-type: none"> o - Override s - Offline e - ECC R - RFID m - manual L - approved lesser amount

Host Changes

Chase Paymentech

Enhancement	Description
1. Support FSA	<ul style="list-style-type: none"> • Enhancement • FSA (Flexible Spending Account) transactions are now supported to the Chase host. • FSA is currently undergoing certification.

Concord: H&C Format

Enhancement	Description
1. -No Change to Host -	<ul style="list-style-type: none"> • ---

MPS (Fifth Third)

Enhancement	Description
1. Added Settlement Report	<ul style="list-style-type: none"> • Enhancement • A settlement report has been added for the MPS host.
2. FSA Support	<ul style="list-style-type: none"> • Enhancement • FSA (Flexible Spending Account) transactions are now supported to the MPS host. • FSA transactions support Total FSA, RX Dental, Medical and Vision amounts.
3. Additional Tender Support	<ul style="list-style-type: none"> • Enhancement • MPS has been enhanced to support all tenders that were originally available for the MPS host through WinEPS. • These additional tender are currently undergoing certification.

Shazam

Enhancement	Description
1. -No Change to Host -	<ul style="list-style-type: none"><li data-bbox="570 373 639 394">• ---

Solupay/Echo

Enhancement	Description
1. -No Change to Host -	<ul style="list-style-type: none"><li data-bbox="570 728 639 749">• ---

Section 2

New Features

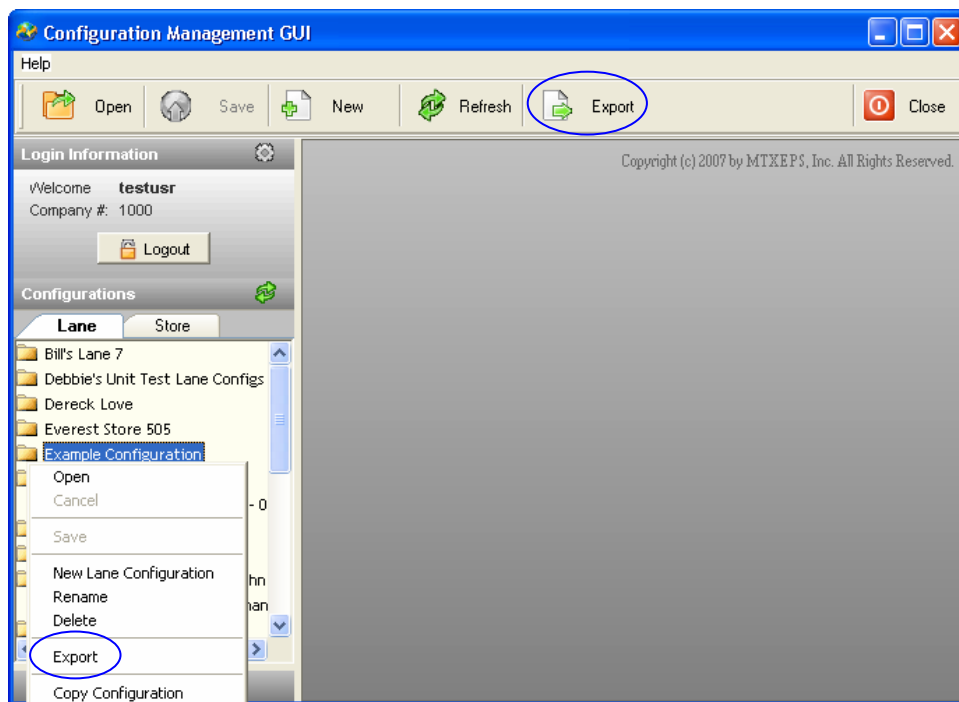
Enhanced Configuration Management GUI

The following sections list the enhancements available in this release for the Configuration Management GUI (CFG). For additional information, see the Connected Payments User's Guide.

Export Lane Configuration

Lane configurations can now be exported to your local drive. This Export feature, combined with the Configuration Import feature will allow users to copy lane configurations between different companies.

After logging into the Configuration Management GUI a user can export a lane configuration by either selecting a lane configuration and clicking the "Export" button on the top task bar, or by right clicking the desired lane configuration and selecting the Export option from the menu.

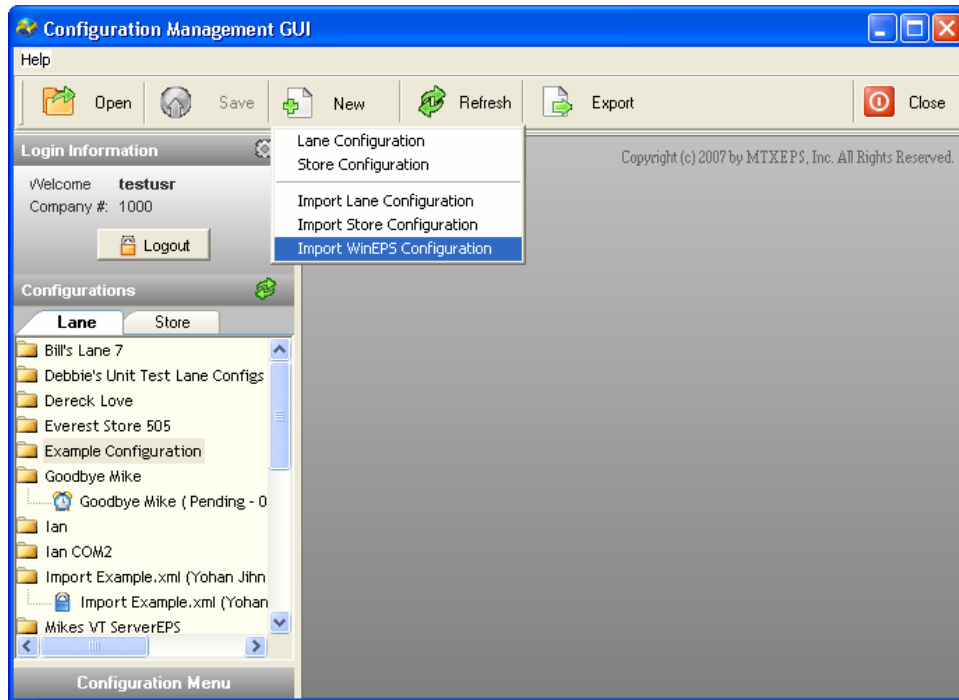


After selecting export, a folder browse box will be presented that will allow the user to select where the files will be copied to.

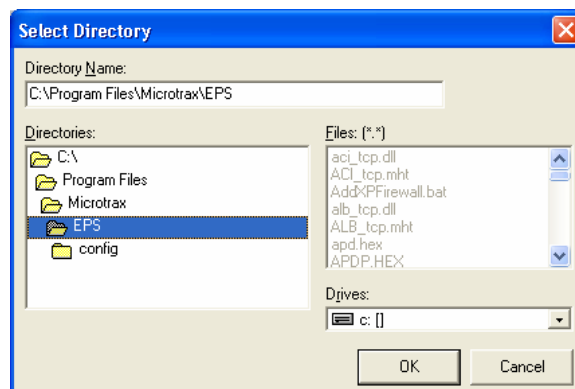
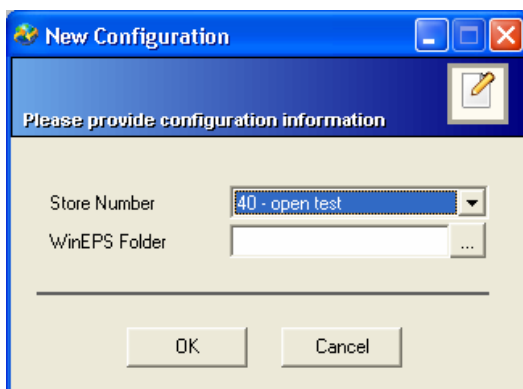
Import WinEPS Configuration

Under the “New” taskbar button, the user now has the ability to import a WinEPS configuration. To use this feature, WinEPS must be upgraded to 824 or higher.

When a user selects the New button, a menu will appear that gives the option for Import WinEPS Configuration.



Selecting Import WinEPS Configuration will bring up the option to select a store to import this configuration for. If the store you are looking for is not listed, it may already have a configuration setup.



Use the “...” button next to WinEPS Folder to select the directory in which WinEPS is installed. This import feature will automatically transfer all settings from the WinEPS installation to the Connected Payments servers.

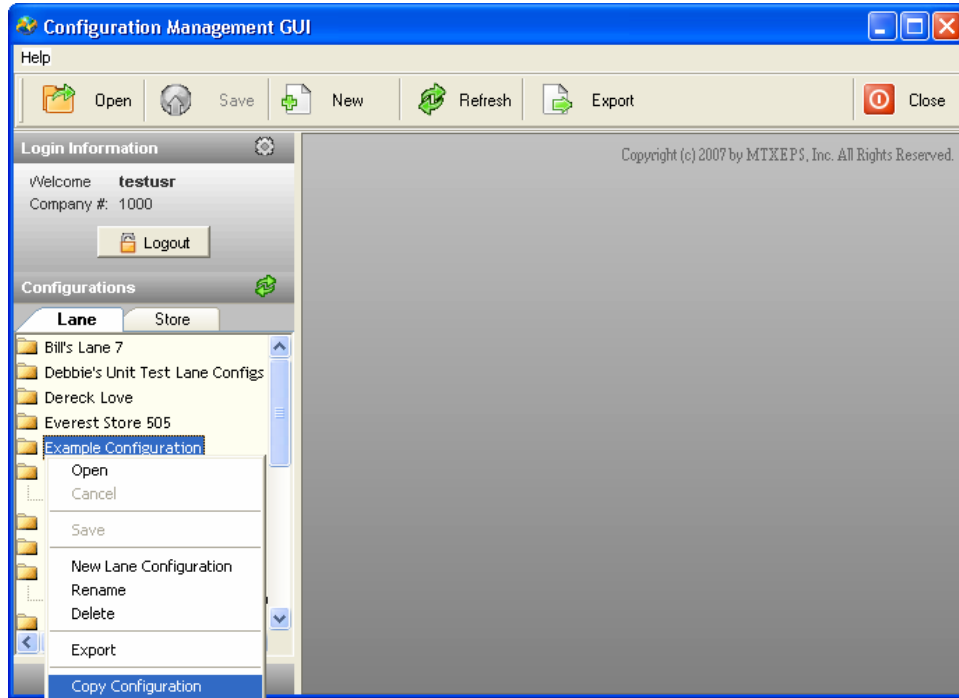
The import feature will load the following information:

- WinEPS Lane configurations for defined lanes (only). Each lane configuration file in use will be uploaded and made available in the Lanes tab.
- Number of lanes defined and associated configuration files.
- Host selections if the defined hosts are supported by Connected Payments.
- Configured IP address information into the Setup.Txt file. This IP address should be updated with the IP address of the Proxy Client before use.
- Receipt header and footer, and back deposit information.

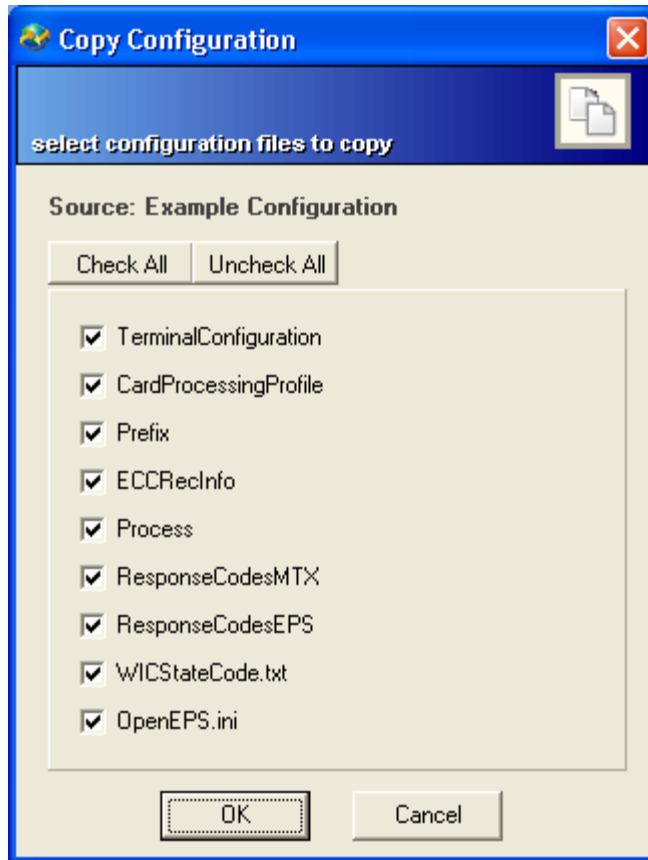
Copy Lane Configuration

The ability to copy lane configurations has been added so that the user can duplicate some or all of the setting in one configuration and copy them into a different configuration; this eliminates the need to manually repeat configuration choices for multiple lanes within the same company.

To copy configuration data from one lane, simply right click the lane and select the Copy Configuration option from the menu.

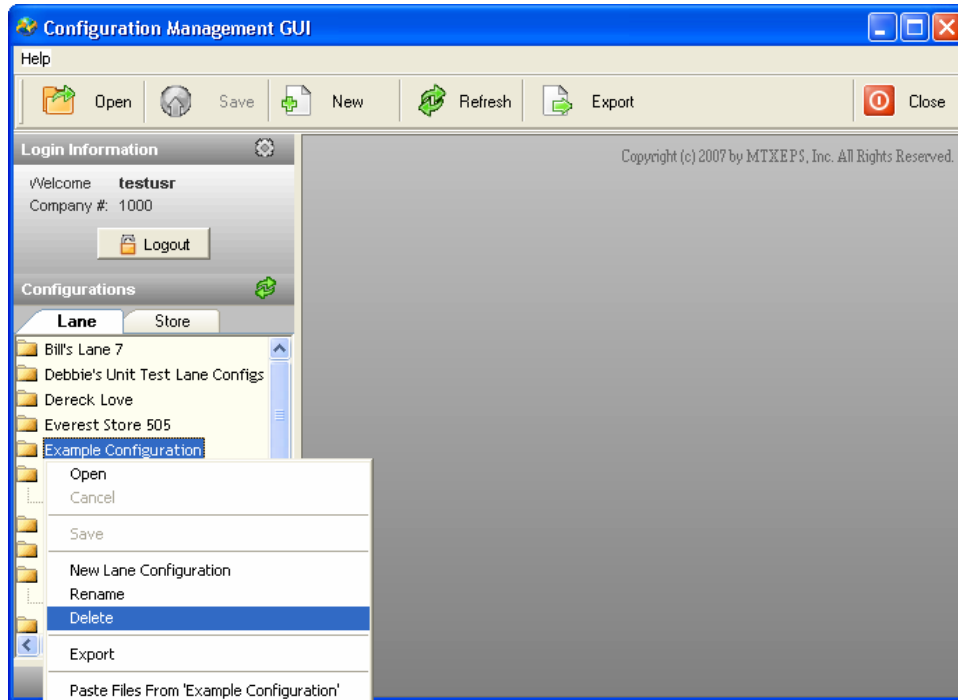


To paste some or all of the configuration data into another lane configuration, select the new lane config, right click and select the Paste Menu option. This will display a screen that allows the user to determine what items will be pasted into the configuration.



Delete Configuration

The ability to delete a lane or store configuration has been added. To delete a configuration, right click the configuration and select Delete from the menu. The user will be asked for confirmation before deleting.

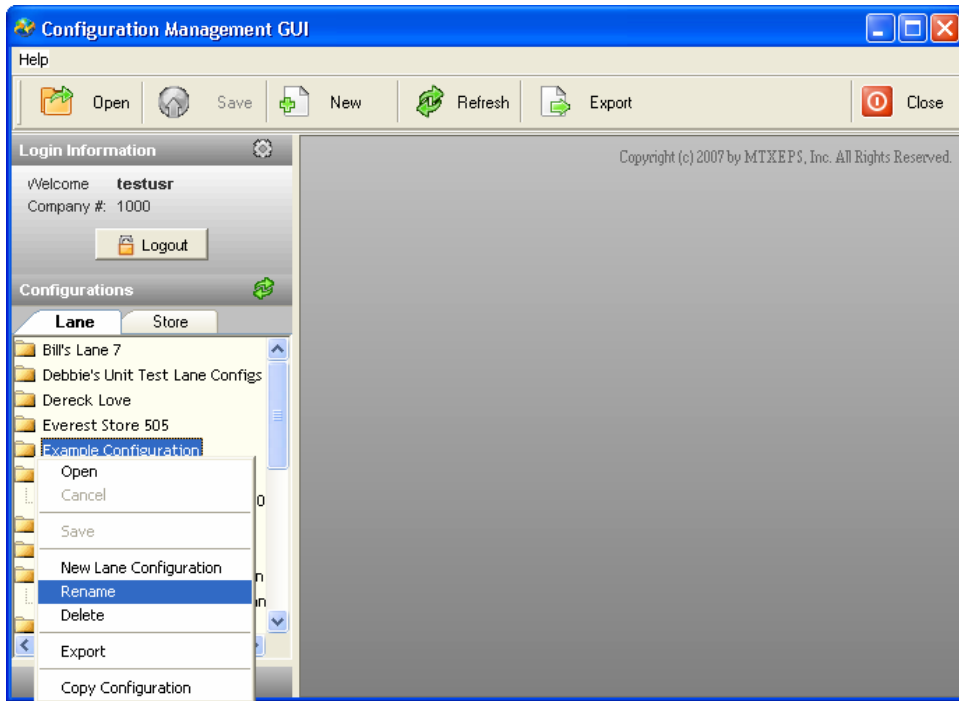


If the user attempts to delete a lane configuration file that is currently assigned to any store, the delete operation will fail. To successfully delete a lane configuration, the lane must be removed from all store configurations.

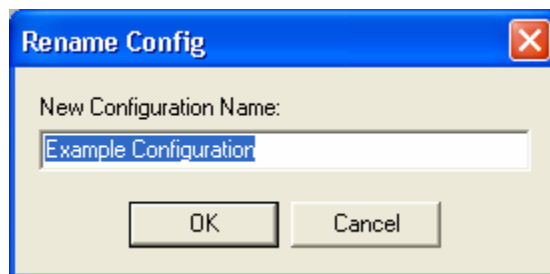
Rename Configuration

Lane configuration file may now be renamed.

To rename a lane configuration, right click on the configuration and select Rename from the menu.



A rename dialog box will appear, allow the user to enter a new name.



If a configuration file is in use, renaming it will update the name for those store configurations as well.

Enhanced Transaction Search

The Transaction Search screen has been improved with the following features:

New Searchable Fields

These fields have been added to the available search criteria that can help to limit the result set for a transaction search:

- PO Number
- Department
- Cashier
- User
- Lane Number

Transaction Search
MTXEPS Example User
Wednesday, February 20, 2008

Please select a store, the results will be viewable if result count is less than 1000.

Result Count: 0

Select date of transaction: **February 2008** (Calendar view showing Feb 17-20, 2008)

Date range (optional): **February 2008** (Calendar view)

Store: Select a store (dropdown)
Tender: (dropdown)
Transaction: (dropdown)

Transaction Amt: Seq #: PO #: Account # (First 6...Last 4):

Department: User: Cashier: Lane:

No results were returned.

Search Limit

The viewable result limit has been increased to 1000 transactions and the date search range has been limited to a 15 day span that will be displayed on the new calendar controls. Once a beginning date has been selected, the available dates in the Date Range calendar will be limited to reflect this 15 day search window.

Show Print Options

The columns that are displayed on the Transaction Search result list are now user configurable. Once a valid search is performed that returns one or more results, the Show Print Options selection will appear. Clicking this option will display the list of columns available.

Result Count: 46

Select date of transaction: **December 2007** | Date range (optional): **January 2008**

Store: Store 1 | Tender: Credit | Transaction: [dropdown]

Transaction Amt: [input] Seq #: [input] PO #: [input] Account #: (First 6...Last 4) [input]

Department: [input] User: [input] Cashier: [input] Lane: [input]

[Show Results](#) | [Print Results](#) | [Hide Print Options](#)

Report Title: [input]

Show / Hide Columns

Details	Store #	Time	Transaction	Seq #	Account #	Trans Amt	Approved	Auth Code	Cashier	Lane	Dept	User	PO/Ref#	Flags
<input checked="" type="checkbox"/>	<input checked="" type="checkbox"/>	<input checked="" type="checkbox"/>	<input checked="" type="checkbox"/>	<input checked="" type="checkbox"/>	<input checked="" type="checkbox"/>	<input checked="" type="checkbox"/>	<input checked="" type="checkbox"/>	<input checked="" type="checkbox"/>	<input checked="" type="checkbox"/>	<input checked="" type="checkbox"/>	<input checked="" type="checkbox"/>	<input checked="" type="checkbox"/>	<input checked="" type="checkbox"/>	<input checked="" type="checkbox"/>

Transaction Search: MTXEPS | Run By: [input] | Date: 12/30/2007 - 1/14/2008

Legend: m - manual, L - approved lesser amount, e - ECC, o - Override, s - Offline, R - RFID

Details	Store #	Time	Transaction	Seq #	Account #	Trans Amt	Approved	Auth Code	Cashier	Lane	Dept	User	PO/Ref#	Flags
Details	2	1/11/2008 6:38:14 AM	MC Purchase	12268	510510...5100	\$17.76	\$17.76	277558	1	01				m

© 2007-2008 MTXEPS Inc., All rights reserved.

A user can then uncheck the columns that are not desired, and click Show Results, and the results will be displayed with on the selected columns.

The user may also change the title of the report by entering a new name in the Report Title text box. The new title will replace the “Transaction Search” title in the report once the Show Results option has been selected again.

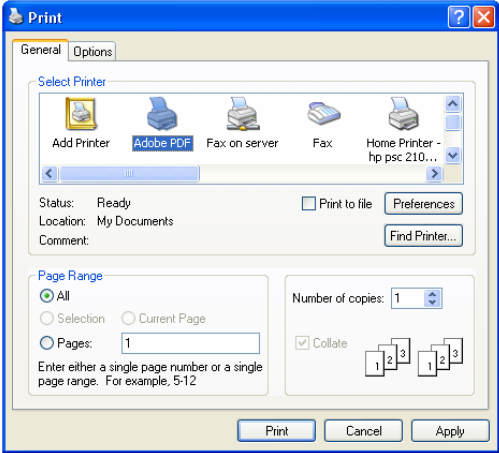
Print Transaction Search

The option to print the results of the transaction search is now available. After performing a query, the user may select the Print results option. This will open the search results (only) in a separate web page and automatically activate the printer selection screen.

New Report Title: MTXEPS
Run By: Ian Douglas
Date: 12/30/2007 - 1/14/2008
m - manual
L - approved lesser amount
e - ECC
o - Override
s - Offline
R - RFID

Store #	Transaction	Account #	Trans Amt	Approved	Auth Code	Cashier	Lane	Dept	User	PO/Ref#	Flags
2	MC Purchase	510510...5100	\$17.76	\$17.76	277558	1	01		jolivieri		m

© 2007-2008 MTXEPS Inc., All rights reserved.



The user may print the results to any defined printer.

Enhanced Store Access Control

The ability to limit a user's access to certain stores within a company has been added to Connected Payments.

This option is made available by selecting the Store Access option from the left hand menu.

The screenshot shows the 'Store Management' interface. At the top, it displays the time '14:21', navigation links 'Home → Administration → Store Access', and the user 'MTXEPS : Example User' with the date 'Wednesday, February 20, 2008'. On the left is a navigation menu with categories: Home, Company, Personal, Administration, and Log Off. The 'Administration' section is expanded to show 'Store Access'. The main content area shows 'Currently Selected User: Basic User'. Below this are two sections: 'Quick Assignment' with a 'Store' dropdown set to '1 - Jon's Store 1' and an 'Assign' button; and 'All Stores' with a table of stores and an 'Assign All' button. The table has columns for '#', 'Store', and 'Assign'.

#	Store	Assign
100	Concord Store #100	<input checked="" type="checkbox"/>
50	Dereck #50	<input checked="" type="checkbox"/>
500	Dereck - Chase 500	<input checked="" type="checkbox"/>
505	Dereck - Concord	<input checked="" type="checkbox"/>
11	Store #11	<input checked="" type="checkbox"/>
12	Store #12	<input checked="" type="checkbox"/>
13	Store #13	<input checked="" type="checkbox"/>
14	Store #14	<input checked="" type="checkbox"/>
15	Store #15	<input checked="" type="checkbox"/>
20	Store #20	<input checked="" type="checkbox"/>

To select a user to modify, use the Currently Selected User dropdown box; this will contain a list of all available users. Once a user is selected, access may be quickly granted using the Quick Assignment dropdown or the All Stores list may be used to grant multiple store access.

When a new user is added, by default they will have access to no stores, and must be assigned store access through this interface.

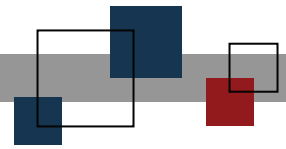
Quick Assign

Quick assign is used to grant the selected user access to only one store. Simply select the Assign option.

All Stores

The All Stores list is used to grant or restrict user access to multiple stores. A user will be granted access to a store if that store's Assign checkbox is checked. The Assign All and Clear All options make it possible to clear or set the checkboxes for all available stores.

There is no specific 'save' option; if a store is checked the user is immediately granted access, similarly, when a store is unchecked access is revoked.



© StoreNext Retail Technologies LLC 2008

StoreNext Retail Technologies LLC endeavors to ensure that the information in this document is correct and fairly stated but does not accept liability for any error or omission.

The development of StoreNext products and services is continuous and published information may not be up to date. It is important to check the current position with StoreNext. This document is not part of a contract or license save insofar as may be expressly agreed.