

-  *Connected Payments*
-  *Release Notes*
-  *Release 2.8*
- 
- 



Connected Payments Release Notes

Date of Issue	Product Identification Number	Part Number	Brief Description
February 2008	45001/112	89000428	Release 2.6
June 2008	45001/112	89000445	Release 2.7
July 2008	45001/112	89000460	Release 2.8

**© Copyright StoreNext Retail Technologies LLC 1995-2008
All rights reserved**

This publication is protected by federal copyright law. No part of this publication may be reproduced or transmitted into any human or computer language in any form or by any means, stored in a retrieval system, transmitted, redistributed, translated or disclosed to third parties, or de-compiled in any way including, but not limited to, photocopy, photograph, electronic, mechanical, magnetic or manual without the express written permission of StoreNext Retail Technologies LLC or its licensors, if any. This document, notwithstanding the above, may be distributed in electronic or printed form to personnel who are employed by either (1) a StoreNext customer of the subject system of this document or (2) personnel from an authorized StoreNext dealer of the subject system of this document. All copies, so distributed and/or so authorized, shall contain a full copy of this copyright notice.

StoreNext Retail Technologies LLC endeavors to ensure that the information in this document is correct and fairly stated but does not accept liability for any error or omission. StoreNext Retail Technologies LLC makes no representation or warranties with respect to the contents hereof, and specifically disclaims any implied warranties of merchantability or fitness for a particular purpose or non-infringement. No commitments by StoreNext or its suppliers are made from this documentation which is provided for information only.

Development of StoreNext products and documentation is continuous: StoreNext Retail Technologies LLC reserves the right to revise this publication and to make changes from time to time in the contents hereof or in the products herein described or discussed without notice and without any obligation of StoreNext Retail Technologies LLC to notify any person or organization of such revision or changes. Information published in this document will likely become obsolete over time and it is recommended that users regularly check for updates and newer versions.

StoreNext Retail Technologies LLC has prepared this manual for use by users, authorized third parties and personnel of StoreNext Retail Technologies LLC as a guide to the proper installation, operation, customization and/or maintenance of StoreNext Retail Technologies LLC equipment and software. The drawings and specifications contained herein are the property of StoreNext Retail Technologies LLC and/or its licensors.

Third-party products, services, or company names referenced in this document may be trademarked or copyrighted by their respective owners, and are for identification purposes only.

Copyrights, trademarks and license agreements shall be governed and construed in accordance with the laws of the State of Texas and the Federal Arbitration Act, and shall benefit Retailix, its successors, and assigns.

Address comments and corrections to:

StoreNext Retail Technologies LLC
Software Program Director
6100 Tennyson Parkway
Suite 130
Plano, Texas 75024

Table of Contents

SECTION 1	4
Connected Payments Fixed Issues and Enhancements	4
Server Changes	4
Stand Beside Solutions	10
VeriFone Vx570	10
Host Changes	11
Chase Paymentech	11
Concord: H&C Format	11
MPS (Fifth Third)	11
Shazam.....	11
Solupay/Echo.....	12
SECTION 2	13
New Features	13
Complete User Listing Report	13
Pin Pad Serial Number Report	14
All Stores Access	15

Section 1

Connected Payments Fixed Issues and Enhancements

Server Changes

Enhancement	Description
1. Pre-Auth Completion Transaction totals	<ul style="list-style-type: none"> • Enhancement • The Web Services summary reports have been updated to include Pre-Auth Completion transactions in the totals.
2. Pin Pad Serial Number Report	<ul style="list-style-type: none"> • Enhancement • A new web services report is available that displays the Serial Number of the Pin Pad at each POS lane. • The following models of terminal support Serial Number reporting: <ul style="list-style-type: none"> Hypercom ICE5500 Hypercom ICE6000 VeriFone MX830/850/860/870 VeriFone Omni 490 (If burned at time of manufacture) VeriFone Omni 7000 VeriFone Vx 570 Stand Beside VeriFone Vx 670 (Terminal not available for OpenEPS Direct) • Serial Number reporting requires the use of OpenEPS version 825.0 or higher at the POS lanes. • Serial numbers are being collected starting with this release. Though a few customer installations have previously reported serial numbers for tracking, for efficiency these records will not be transitioned to the new database format. • See Section 2 for additional information.

Section 1 – Connected Payments Fixed Issues and Enhancements
Server Changes

Enhancement	Description																																																																																																						
3. Fuel Interface	<ul style="list-style-type: none"> Enhancement A fuel lane interface is now available for use with the Web Services. Fuel transactions are currently supported only for the Concord H&C host. This interface requires the installation of software at the store to coordinate the communication between the fuel lanes and the web service host. For additional information on this product contact sales@mtxeps.com. 																																																																																																						
4. Response Code mapping update	<ul style="list-style-type: none"> Enhancement The following Concord response codes have been updated or added. <table border="1"> <thead> <tr> <th>Response code (In from Concord)</th> <th>Response code (Out to lane)</th> <th>Description</th> </tr> </thead> <tbody> <tr><td>C43</td><td>12</td><td>Error Call Help - TR Invalid Transaction (ND)</td></tr> <tr><td>D10</td><td>12</td><td>Error Call Help - TR Invalid Transaction (ND)</td></tr> <tr><td>D14</td><td>25</td><td>Error Call Help - NT Unable to locate Record(ND)</td></tr> <tr><td>D20</td><td>25</td><td>Error Call Help - NT Unable to locate Record(ND)</td></tr> <tr><td>D25</td><td>96</td><td>Error Call Help - SE System Malfunction (ND)</td></tr> <tr><td>D26</td><td>25</td><td>Error Call Help - NT Unable to locate Record(ND)</td></tr> <tr><td>D28</td><td>30</td><td>Error Call Help - FE Format Error (ND)</td></tr> <tr><td>D39</td><td>58</td><td>Invalid Transaction - Not permitted to Terminal (ND)</td></tr> <tr><td>D40</td><td>94</td><td>Error Call Help - SQ Duplicate Transmission (ND)</td></tr> <tr><td>D41</td><td>25</td><td>Error Call Help - NT Unable to locate Record on file (ND)</td></tr> <tr><td>E22</td><td>12</td><td>Error Call Help - TR Invalid Transaction (ND)</td></tr> <tr><td>E24</td><td>13</td><td>Error Call Help - AM Invalid Amount (ND)</td></tr> <tr><td>R10</td><td>61</td><td>Velocity Decline (NO)</td></tr> <tr><td>R11</td><td>61</td><td>Velocity Decline (NO)</td></tr> <tr><td>R12</td><td>61</td><td>Velocity Decline (NO)</td></tr> <tr><td>R13</td><td>61</td><td>Velocity Decline (NO)</td></tr> <tr><td>R14</td><td>61</td><td>Velocity Decline (NO)</td></tr> <tr><td>R15</td><td>61</td><td>Velocity Decline (NO)</td></tr> <tr><td>R16</td><td>61</td><td>Velocity Decline (NO)</td></tr> <tr><td>R17</td><td>61</td><td>Velocity Decline (NO)</td></tr> <tr><td>R18</td><td>61</td><td>Velocity Decline (NO)</td></tr> <tr><td>R20</td><td>61</td><td>Velocity Decline (NO)</td></tr> <tr><td>R21</td><td>61</td><td>Velocity Decline (NO)</td></tr> <tr><td>R22</td><td>61</td><td>Velocity Decline (NO)</td></tr> <tr><td>R23</td><td>61</td><td>Velocity Decline (NO)</td></tr> <tr><td>R24</td><td>61</td><td>Velocity Decline (NO)</td></tr> <tr><td>R25</td><td>61</td><td>Velocity Decline (NO)</td></tr> <tr><td>R26</td><td>61</td><td>Velocity Decline (NO)</td></tr> <tr><td>R27</td><td>61</td><td>Velocity Decline (NO)</td></tr> <tr><td>R28</td><td>61</td><td>Velocity Decline (NO)</td></tr> <tr><td>R29</td><td>61</td><td>Velocity Decline (NO)</td></tr> <tr><td>R31</td><td>58</td><td>Invalid Transaction - Not permitted to Terminal (ND)</td></tr> <tr><td>R32</td><td>58</td><td>Invalid Transaction - Not permitted to Terminal (ND)</td></tr> </tbody> </table>	Response code (In from Concord)	Response code (Out to lane)	Description	C43	12	Error Call Help - TR Invalid Transaction (ND)	D10	12	Error Call Help - TR Invalid Transaction (ND)	D14	25	Error Call Help - NT Unable to locate Record(ND)	D20	25	Error Call Help - NT Unable to locate Record(ND)	D25	96	Error Call Help - SE System Malfunction (ND)	D26	25	Error Call Help - NT Unable to locate Record(ND)	D28	30	Error Call Help - FE Format Error (ND)	D39	58	Invalid Transaction - Not permitted to Terminal (ND)	D40	94	Error Call Help - SQ Duplicate Transmission (ND)	D41	25	Error Call Help - NT Unable to locate Record on file (ND)	E22	12	Error Call Help - TR Invalid Transaction (ND)	E24	13	Error Call Help - AM Invalid Amount (ND)	R10	61	Velocity Decline (NO)	R11	61	Velocity Decline (NO)	R12	61	Velocity Decline (NO)	R13	61	Velocity Decline (NO)	R14	61	Velocity Decline (NO)	R15	61	Velocity Decline (NO)	R16	61	Velocity Decline (NO)	R17	61	Velocity Decline (NO)	R18	61	Velocity Decline (NO)	R20	61	Velocity Decline (NO)	R21	61	Velocity Decline (NO)	R22	61	Velocity Decline (NO)	R23	61	Velocity Decline (NO)	R24	61	Velocity Decline (NO)	R25	61	Velocity Decline (NO)	R26	61	Velocity Decline (NO)	R27	61	Velocity Decline (NO)	R28	61	Velocity Decline (NO)	R29	61	Velocity Decline (NO)	R31	58	Invalid Transaction - Not permitted to Terminal (ND)	R32	58	Invalid Transaction - Not permitted to Terminal (ND)
Response code (In from Concord)	Response code (Out to lane)	Description																																																																																																					
C43	12	Error Call Help - TR Invalid Transaction (ND)																																																																																																					
D10	12	Error Call Help - TR Invalid Transaction (ND)																																																																																																					
D14	25	Error Call Help - NT Unable to locate Record(ND)																																																																																																					
D20	25	Error Call Help - NT Unable to locate Record(ND)																																																																																																					
D25	96	Error Call Help - SE System Malfunction (ND)																																																																																																					
D26	25	Error Call Help - NT Unable to locate Record(ND)																																																																																																					
D28	30	Error Call Help - FE Format Error (ND)																																																																																																					
D39	58	Invalid Transaction - Not permitted to Terminal (ND)																																																																																																					
D40	94	Error Call Help - SQ Duplicate Transmission (ND)																																																																																																					
D41	25	Error Call Help - NT Unable to locate Record on file (ND)																																																																																																					
E22	12	Error Call Help - TR Invalid Transaction (ND)																																																																																																					
E24	13	Error Call Help - AM Invalid Amount (ND)																																																																																																					
R10	61	Velocity Decline (NO)																																																																																																					
R11	61	Velocity Decline (NO)																																																																																																					
R12	61	Velocity Decline (NO)																																																																																																					
R13	61	Velocity Decline (NO)																																																																																																					
R14	61	Velocity Decline (NO)																																																																																																					
R15	61	Velocity Decline (NO)																																																																																																					
R16	61	Velocity Decline (NO)																																																																																																					
R17	61	Velocity Decline (NO)																																																																																																					
R18	61	Velocity Decline (NO)																																																																																																					
R20	61	Velocity Decline (NO)																																																																																																					
R21	61	Velocity Decline (NO)																																																																																																					
R22	61	Velocity Decline (NO)																																																																																																					
R23	61	Velocity Decline (NO)																																																																																																					
R24	61	Velocity Decline (NO)																																																																																																					
R25	61	Velocity Decline (NO)																																																																																																					
R26	61	Velocity Decline (NO)																																																																																																					
R27	61	Velocity Decline (NO)																																																																																																					
R28	61	Velocity Decline (NO)																																																																																																					
R29	61	Velocity Decline (NO)																																																																																																					
R31	58	Invalid Transaction - Not permitted to Terminal (ND)																																																																																																					
R32	58	Invalid Transaction - Not permitted to Terminal (ND)																																																																																																					

Section 1 – Connected Payments Fixed Issues and Enhancements
Server Changes

Enhancement	Description		
	R33	58	Invalid Transaction - Not permitted to Terminal (ND)
	R34	58	Invalid Transaction - Not permitted to Terminal (ND)
	R41	58	Invalid Transaction - Not permitted to Terminal (ND)
	R42	58	Invalid Transaction - Not permitted to Terminal (ND)
	R43	58	Invalid Transaction - Not permitted to Terminal (ND)
	R44	58	Invalid Transaction - Not permitted to Terminal (ND)
	R51	66	Secondary ID Needed [Driver's Licence] (NF)
	R52	58	Invalid Transaction - Not permitted to Terminal (ND)
	R54	58	Invalid Transaction - Not permitted to Terminal (ND)
	R55	58	Invalid Transaction - Not permitted to Terminal (ND)
	R56	58	Invalid Transaction - Not permitted to Terminal (ND)
	R57	58	Invalid Transaction - Not permitted to Terminal (ND)
	R58	58	Invalid Transaction - Not permitted to Terminal (ND)
	R59	25	Error Call Help - NT Unable to locate Record on file (ND)
	R60	58	Invalid Transaction - Not permitted to Terminal (ND)
	R61	58	Invalid Transaction - Not permitted to Terminal (ND)
	R62	94	Error Call Help - SQ Duplicate Transmission (ND)
	U11	25	Error Call Help - NT Unable to locate Record on file (ND)
	U12	13	Error Call Help - AM Invalid Amount (ND)
	U13	25	Error Call Help - NT Unable to locate Record on file (ND)
	U14	13	Error Call Help - AM Invalid Amount (ND)
	U21	96	Error Call Help - SE System Malfunction (ND)
	U22	96	Error Call Help - SE System Malfunction (ND)
	U23	96	Error Call Help - SE System Malfunction (ND)
	U31	30	Error Call Help - FE Format Error (ND)
	U32	25	Error Call Help - NT Unable to locate Record on file (ND)
	U33	94	Error Call Help - SQ Duplicate Transmission (ND)
	U34	12	Error Call Help - TR Invalid Transaction (ND)
	U36	12	Error Call Help - TR Invalid Transaction (ND)
	U2D	91	Error Call Help - NA Issuer Unavailable [try local] (ND/AB)

Section 1 – Connected Payments Fixed Issues and Enhancements
Server Changes

Enhancement	Description
5. Declined advice transactions failing to pass store number	<ul style="list-style-type: none"> • Fixed • The Proxy Client was not properly passing on the store number that was included in the transaction information from OpenEPS for declined advice transactions. • This has been corrected so that the Proxy Client passes along the store number for declined advice transactions in the same way as other transaction types.
6. Change option name from "Show Print Options" to "Show Column Options"	<ul style="list-style-type: none"> • Enhancement • The "Show Column Options" link on the Transaction Search page of the Web Services page has been updated with the new name of "Show Print Options". • This change was made to improve clarity, as the Show Print Options feature can be used to modify both the Transaction Search display and the printing of displayed results.
7. Pre-Auth and Completion report enhancement	<ul style="list-style-type: none"> • Enhancement • Pre-Authorization transactions and Completion transactions are linked on the Pre-Auth & Completion report.
8. Transaction Search legend missing the FSA identifier.	<ul style="list-style-type: none"> • Fixed • On the Transaction Search page the legend indicator for FSA was absent. The "H – FSA" identifier has been added to the legend.
9. Corrected typo in Account lockout error message	<ul style="list-style-type: none"> • Fixed • The account lock out message had typos in the text; these have been corrected.

Section 1 – Connected Payments Fixed Issues and Enhancements
Server Changes

Enhancement	Description
10. Restrict Web Service GUI access based on IP address	<ul style="list-style-type: none"> • Enhancement • A new option to restrict access to the Web Service GUI and Configuraiton Manger based on IP address has been implemented. • This option allows one or more IP addresses or ranges of IP addresses to be specified that are allowed to connect to the Web Service GUI for their company number. If a connection is attempted from outside the allowed IPs, the connection will be refused. • When a login to the Web Services from an IP address that is not allowed is detected the error message “Access has been restricted for your company” will be displayed. • Attempted login to the Configuration Manager from a restricted IP will result in a failed login with no special message. • This feature is available only by direct request to MTX, and is not part of the Web Services configuration GUI. Contact MTX support if you need this feature set up for you company.
11. Complete user listing report	<ul style="list-style-type: none"> • Enhancement • A new report is available that will display all the users set up for a company, including the RootAdmins group users. • This report shows both active and inactive users and displays the last login. • See Section 2 for additional Information.
12. Voided BUYCheck transactions reported as negative amount	<ul style="list-style-type: none"> • Fixed • Voided BUYCheck (paper) transactions were being incorrectly reported as a negative value under ECC checks in the Host Settlement Report. • This has been corrected so that no negative amounts occur, and the voids properly remove the corresponding purchase amount only.
13. "All Stores Access" option in Store Access List	<ul style="list-style-type: none"> • Enhancement • A new user account option has been added to the Administration > Store Access page that will allow user accounts to be granted access to all stores. • When the "All Stores Access" option is selected, the user selected is granted access to all current stores. When new stores are added, the user account will automatically be updated to receive access to the newly added stores. • See Section 2 for additional Information.
14. Voided Transactions Totals report not displaying Tender Type	<ul style="list-style-type: none"> • Fixed • The tender type was not displaying properly on the Voided Transactions Totals report (TRN03). This has been corrected so the tender type is now displayed.

Section 1 – Connected Payments Fixed Issues and Enhancements
 Server Changes

Enhancement	Description
15. New reports policies	<ul style="list-style-type: none"> • Enhancement • When a new report is added to the Web Services interface, access to the report is granted only to administrator accounts. Administrators will need to modify the access rights of appropriate groups to grant them access to the new reports. • To maintain a consistent user experience, when new reports are available they are added to the end of the report list.
16. Pin Pad Serial Number searchable field in Transaction Search	<ul style="list-style-type: none"> • Enhancement • Pin Pad Serial # has been added as an available search criteria field on the Transaction Search page.
17. IP Address Logging for Web Services	<ul style="list-style-type: none"> • Enhancement • For additional security, the Web Services have been enhanced to log the IP address of any client connecting to the web page. • This information is for use by MXTEPS for security monitoring, and is not available to Web Service users.

Stand Beside Solutions

VeriFone Vx570

Enhancement	Description
1. Vx570 Stand Beside Solution	<ul style="list-style-type: none"> • New Terminal • The VeriFone Vx570 is now supported for use with the OpenEPS Direct payments solution. This stand-alone terminal connects via Ethernet through a standard broadband internet connection to the payments host. • The Vx570 is PCI/PED approved and features encrypted communications from the terminal to the payments host. • The Vx570 supports the following: <ul style="list-style-type: none"> Credit Debit EBT (Food and Cash) Check (ECC with MagTek miniMICR) Zip Code and CVV2 entry Serial Number reporting • Credit to Debit Conversion is not currently supported with the Vx570. • Dial backup is not yet available.

Host Changes

Chase Paymentech

Enhancement	Description
1. -No Change to Host -	<ul style="list-style-type: none"> ---

Concord: H&C Format

Enhancement	Description
2. Support RFID entry mode	<ul style="list-style-type: none"> Enhancement The Manual Entry Flag in the Concord H&C message will now be set to "2" for RFID transactions.

MPS (Fifth Third)

Enhancement	Description
1. -No Change to Host -	<ul style="list-style-type: none"> ---

Shazam

Enhancement	Description
1. -No Change to Host -	<ul style="list-style-type: none"> ---

Solupay/Echo

Enhancement	Description
1. -No Change to Host -	<ul style="list-style-type: none"><li data-bbox="570 373 639 394">• ---

Section 2

New Features

Complete User Listing Report

A new report is available that displays a list of all the users set up for a company, including the RootAdmins group users.

This report shows both active and inactive users and displays the last login.

As with all new reports, access to view this report is automatically granted only to the Administrators and Root Administrator user groups. Administrative users may grant the right to view this report to any other group by adjusting that groups reporting rights in the Administration > Group Management section.

9:12 Home → Company → Reports → Previous Report Home Logoff

1 of 1 100% Find | Next Select a format Export

Active Users List Test Company Run by : Example User
Date : Current

Group	User Name	Full Name	Last Login
Group Administrators			
Administrators	Example User	Example User	None
Administrators	Example User	Example User	Jun 26 2008 3:19PM
Administrators	Example User	Example User	Mar 14 2008 2:28PM
Administrators	Example User	Example User	None
Administrators	Example User	Example User	Jul 3 2008 7:47AM
Administrators	Example User	Test User	None
Administrators	TestDeactivate	Test Deactivate	Mar 12 2008 10:48PM
Administrators	TestUser	Test User	Jul 3 2008 8:24AM
Group Reporting			
Reporting	Example User	Example User	Jun 25 2008 7:07AM
Reporting	Example User	Example User	Oct 10 2007 2:37PM
Reporting	Example User	Example User	Dec 21 2007 10:41AM
Reporting	WebAccounting	Web Accounting	Sep 30 2007 9:35PM
Group RootAdmins			
RootAdmins	Example User	Example User	Jun 6 2008 12:29PM
RootAdmins	User	User	Apr 24 2008 2:37PM
RootAdmins	Example User	Example User	Feb 26 2008 5:07AM

v 1.2.3.7270 © 2007-2008 MTXEPS Inc., All rights reserved. Contact Us | Terms of Use

Pin Pad Serial Number Report

A new web services report is available that displays the Serial Number of the Pin Pad at each POS lane. This report can be used for tracking the terminals in use at store locations.

All serial numbers that have been reported will be displayed. If a lane has had more than one terminal attached, the serial numbers for all the terminal will be shown, along with the date they were first implemented.

The following models of terminal support Serial Number reporting:

- Hypercom ICE5500
- Hypercom ICE6000
- VeriFone MX830/850/860/870
- VeriFone Omni 490 (If burned at time of manufacture)
- VeriFone Omni 7000
- VeriFone Vx 570 Stand Beside
- VeriFone Vx 670 (Terminal not available for OpenEPS Direct)

Serial Number reporting requires the use of OpenEPS version 825.0 or higher at the POS lanes. Lower versions of OpenEPS do not report the terminal serial numbers.

Serial numbers are being collected starting with this release. Though a few customer installations have previously reported serial numbers for tracking, for efficiency these records will not be transitioned to the new database format.

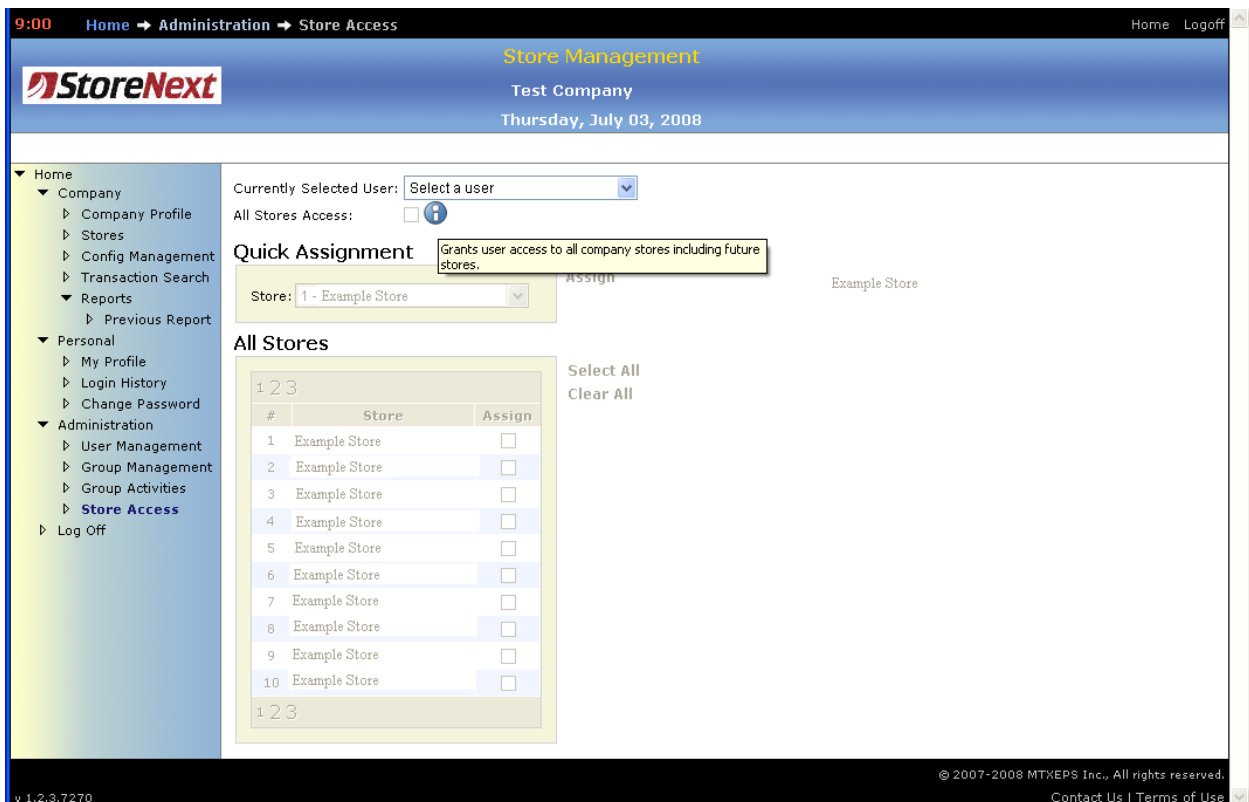
As with all new reports, access to view this report is automatically granted only to the Administrators and Root Administrator user groups. Administrative users may grant the right to view this report to any other group by adjusting that groups reporting rights in the Administration > Group Management section.

The screenshot shows a web browser window displaying a report titled "PIN Pad Serial Number Report". The browser's address bar shows the path: Home → Company → Reports → Previous Report. The report interface includes a navigation bar with a search box, a "Find | Next" button, a "Select a format" dropdown, and an "Export" button. Below the navigation bar, the report title "PIN Pad Serial Number Report" is displayed, along with "Test Company" and "Run by : Example User". The "Date : Current" is also shown. A table with four columns is visible: "Store", "Lane", "PIN Pad Change Date", and "Pin Pad Serial Number". The table is currently empty. At the bottom of the report, it says "Page 1 of 1", "Run 7/3/2008 11:55:53 AM", "©2007, 2008 MTXEPS, Inc., All Rights Reserved", and "DMT25 (8142)". The footer of the browser window shows "v 1.2.3.7270" and "© 2007-2008 MTXEPS Inc., All rights reserved. Contact Us | Terms of Use".

All Stores Access

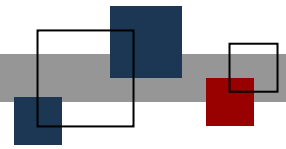
A new user account option has been added to the Administration > Store Access page that will allow user accounts to be granted access to all stores.

When the "All Stores Access" option is selected, the user selected is granted access to all current stores. When new stores are added, the user account will automatically be updated to receive access to the newly added stores.



When a user is selected in the Currently Selected User dropdown box, and the All Stores Access checkbox is checked, the Quick Assignment and All Stores sections will disappear. When this occurs the user has been granted the "All store Access right" and you may exit the screen.

There is no 'save' or enable option, checking the checkbox sets the user right.



© StoreNext Retail Technologies LLC 2008

StoreNext Retail Technologies LLC endeavors to ensure that the information in this document is correct and fairly stated but does not accept liability for any error or omission.

The development of StoreNext products and services is continuous and published information may not be up to date. It is important to check the current position with StoreNext. This document is not part of a contract or license save insofar as may be expressly agreed.