

ENCOR

- Hardware Setup Guide,
■ DLI Mobile Tablet
■ Version 1.0.1.3
■
■

ENCOR Hardware Setup Guide, DLI Mobile Tablet

Date of Issue	Product ID Num.	Part Number	Brief Description
April 2019	45002/092	89000946	1.0.1.3 Release

©Copyright NCR Corporation 1995-2019
All rights reserved

This publication is protected by federal copyright law. This document and its contents are the proprietary, confidential information and property of NCR Corporation ("NCR"). Unauthorized disclosure, reproduction, distribution or use of this document and/or its contents in any form is strictly prohibited. No part of this publication may be reproduced or transmitted into any human or computer language in any form or by any means, stored in a retrieval system, transmitted, redistributed, translated or disclosed to third parties, or de-compiled in any way including, but not limited to, photocopy, photograph, electronic, mechanical, magnetic or manual without the express written permission of NCR or its licensors, if any. This document, notwithstanding the above, may be distributed in electronic or printed form by NCR to personnel who are employed by either (a) a licensee and end user of the subject system of this document or (b) personnel from an authorized NCR Channel Partner or Solution Provider of the subject system of this document. All copies of this document so distributed and/or so authorized, shall contain a full copy of this copyright notice.

NCR has prepared this document as a guide to the proper installation, operation, customization and/or maintenance of NCR products. The drawings and specifications contained herein are the property of NCR and/or its licensors.

NCR endeavors to ensure that the information in this document is correct and fairly stated but does not accept liability for any error or omission. NCR makes no representation or warranties with respect to the contents hereof, and specifically disclaims any implied warranties of merchantability or fitness for a particular purpose or non-infringement. No commitments by NCR or its suppliers are made by or from this documentation which is provided for information only.

Development of NCR products and documentation is continuous: NCR reserves the right to revise this publication and to make changes at any time to the contents hereof or to the products herein described or discussed without notice and without any obligation for NCR to notify any person or organization of such revision or changes. Information published in this document will likely be superseded, and it is recommended that users regularly check for updates and newer versions.

The trademarks NCR, Retailix, StoreNext, ENCOR, ISS45, ScanMaster, R10, ACS, PocketOffice, RPO, RBO, ABO, Connected Payments, ServerEPS, Connected Services, Connected Loyalty, WinEPS and all other NCR product names are registered trademarks or trademarks of NCR; all other trademarks or registered trademarks are the property of their respective owners. Third-party products, services, or company names referenced in this document may be trademarked or copyrighted by their respective owners, and are for identification purposes only. Copyrights, trademarks and license agreements shall be governed and construed in accordance with the laws of the State of New York and the Federal Arbitration Act, and shall benefit NCR, its successors, and assigns.

Address comments and corrections regarding this document to:

Attn: Software Program Director
NCR
864 Spring Street
Atlanta, GA 30308

TABLE OF CONTENTS

Overview.....	3
Preparation Setup on Mobile Tablet – Bluetooth.....	4
Software_SPP_R310_Windows_Driver_v1.1.2.....	6
Bixolon OPOS Driver Installation.....	8
OPOS Driver Installation.....	14
Printer Setup and Testing.....	18
Installing Verifone Unified Driver.....	21
Installing OpenEPS.....	25
Installing ENCOR POS and ENCOR Server Settings.....	29

Overview

This is a complete guide to set up ENCOR, on Data Ltd., Inc. (DLI) tablet. This guide is for the DLI-8 POSReady7 Tablet and the DLI-10 tablet running Windows 10 operating system.

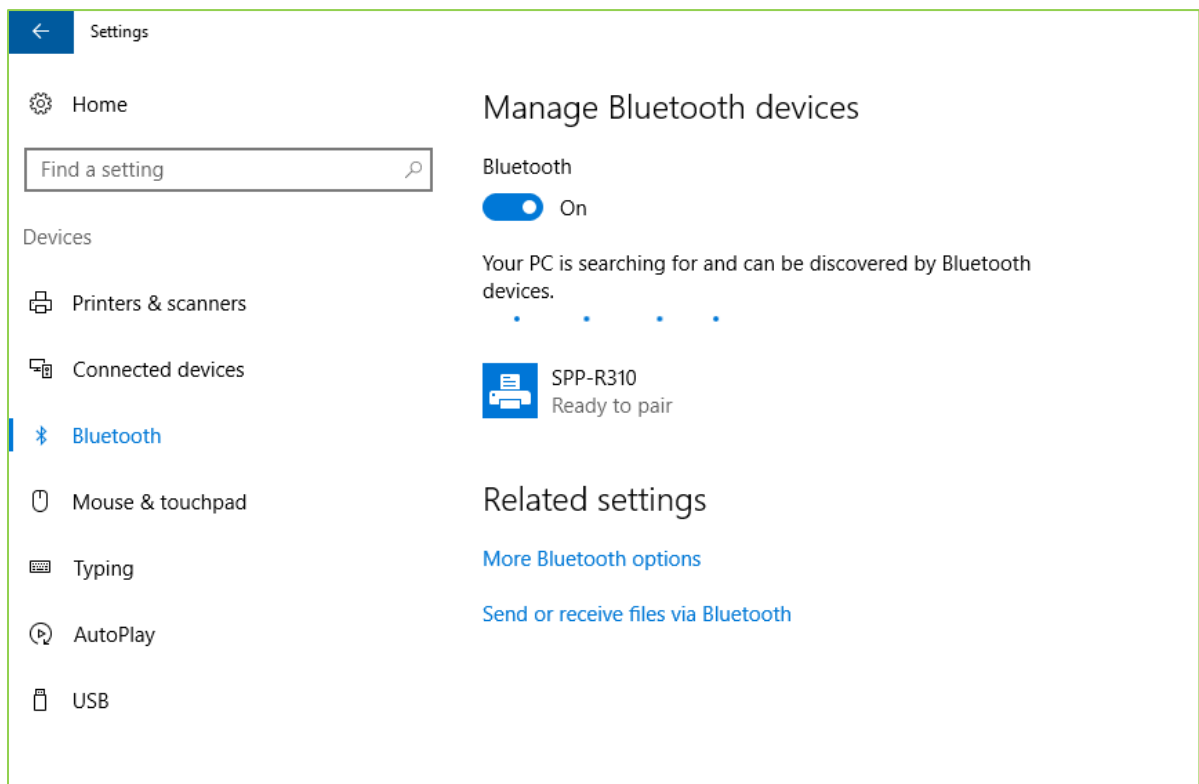
This guide covers the following:

- Preparation Setup on Mobile Tablet – Bluetooth
- Software_SPP_R310_Windows_Driver_v1.1.1 Installation
- Bixolon OPOS Driver Installation
- OPOS Driver Installation
- Printer Setup and Testing
- ENCOR POS Installation and Setting the ENCOR Server

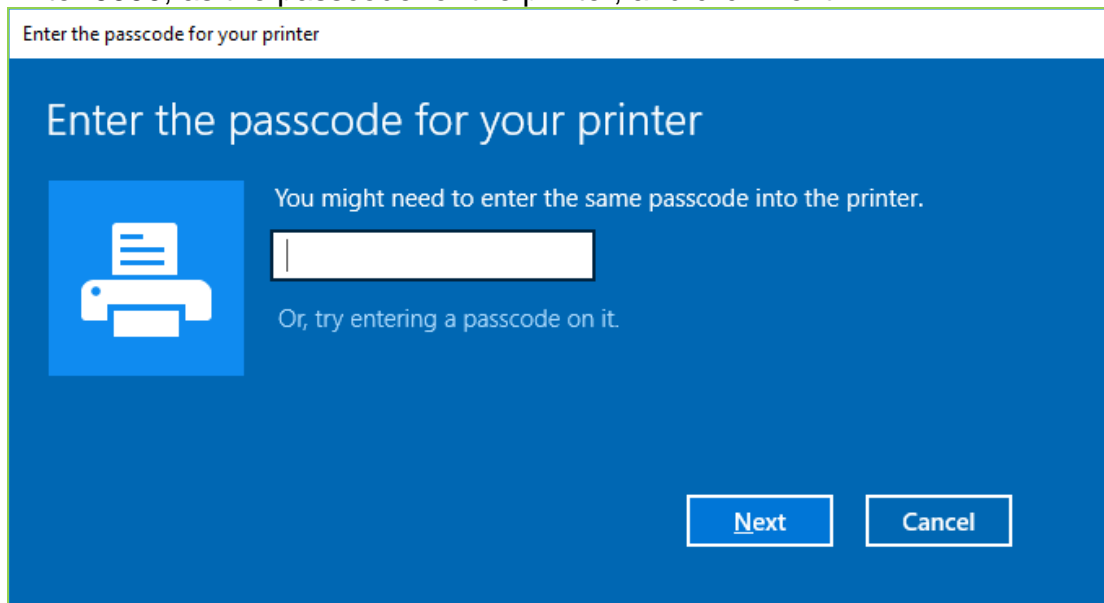
Preparation Setup on Mobile Tablet – Bluetooth

The SPP-R310 Printer can be attached to the tablet via USB connection, or connected via Bluetooth. Before pairing the printer to Bluetooth, make sure the SPP-R310 printer is charged. Here are the steps to pair the printer.

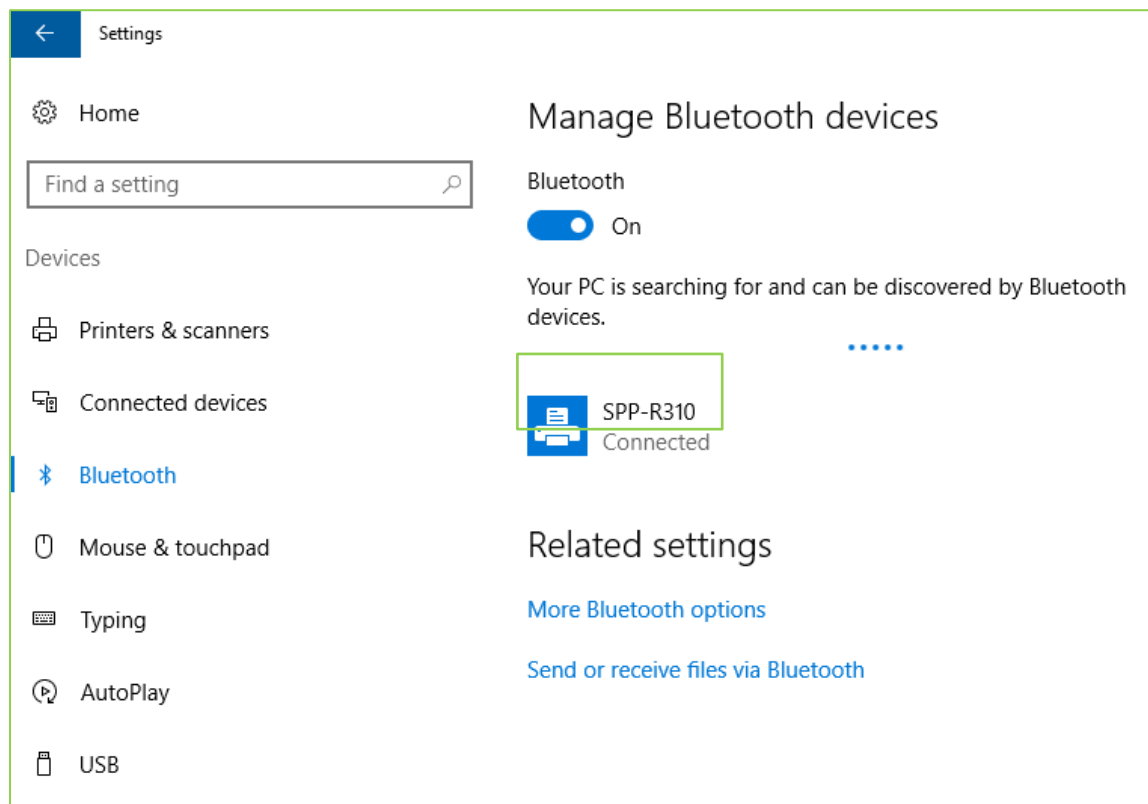
- On the Mobile Tablet, go to **START > SETTINGS > Bluetooth**.
- Click on Manage Bluetooth Devices.
 - Make sure the BLUETOOTH is set to **On**.
 - User should see a message, “Your PC is searching for and can be discovered by Bluetooth Devices”.
 - The printer should be found and say, “*Ready to Pair*”.
 - Click on **Ready to Pair** and **Pair**.



- Enter **0000**, as the passcode for the printer, and click **Next**.



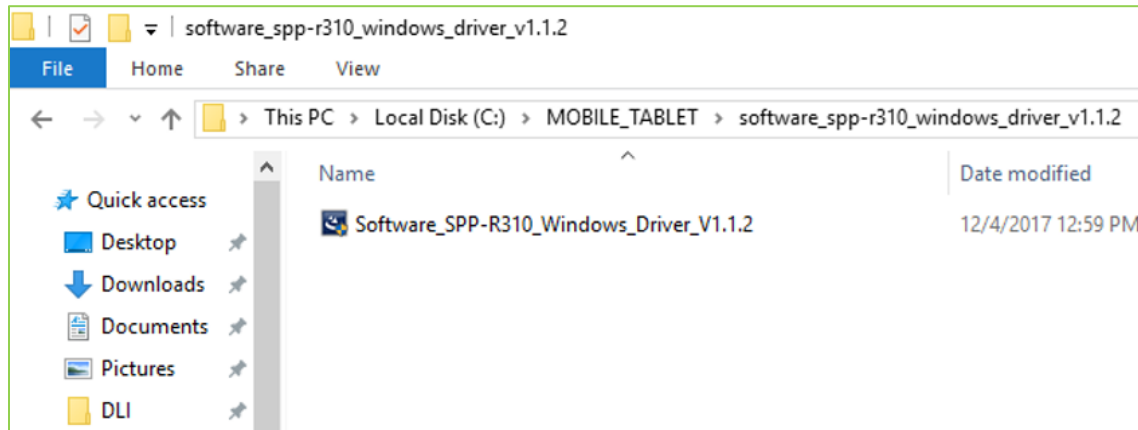
- The printer should now show as Connected.



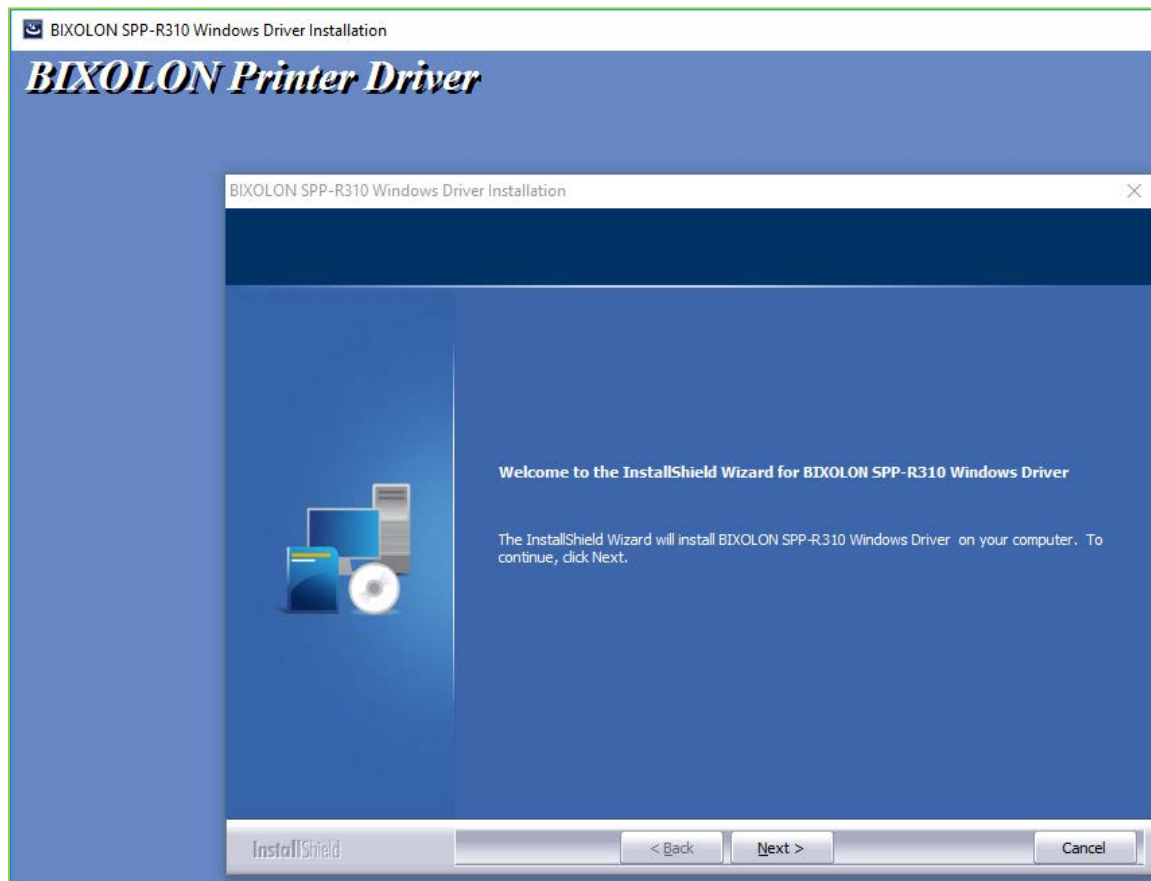
Software_SPP_R310_Windows_Driver_v1.1.2

The “Software_SPP-R310_Windows_Driver_V1.1.2” needs to be installed for the printer.

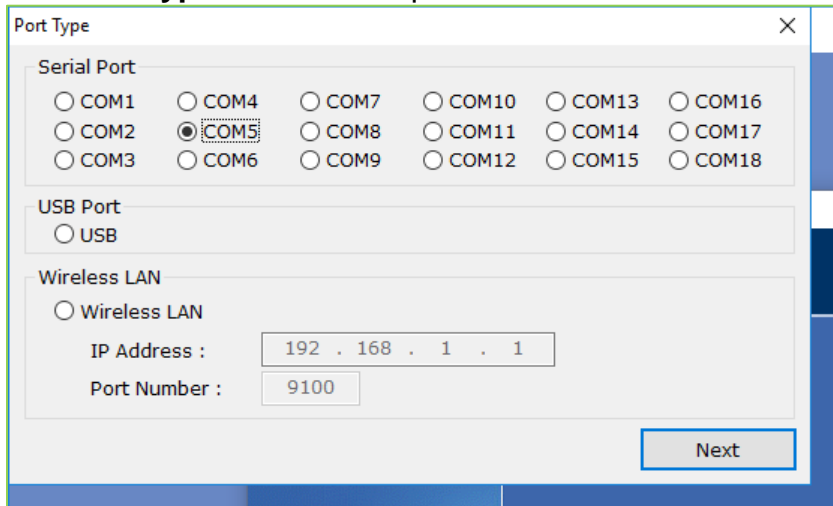
- Right-click on the Software_SPP-R310_Windows_Driver_V1.1.2 and Run as Administrator.



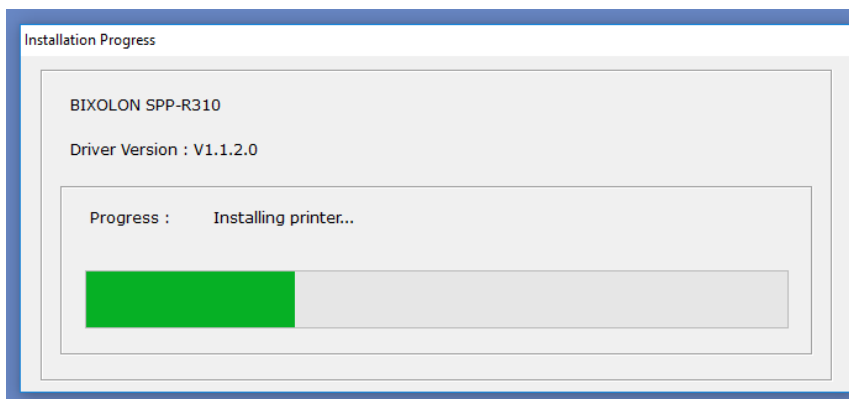
- **Bixolon Printer Driver** Installation window will open, and the installation process will begin. Here, click on the **Next** button.



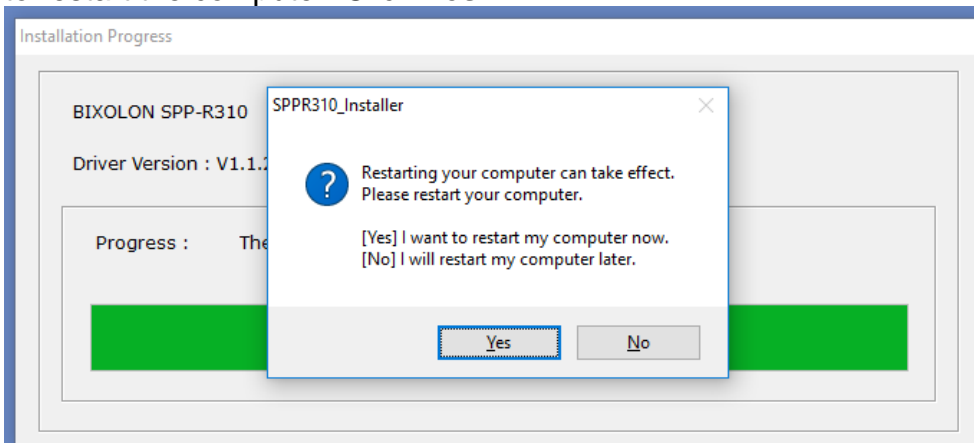
- The **Port Type** window will open. Select Serial Port as **Com5**, and click **Next**.



- An Installation Progress window will open, showing the installation progress.



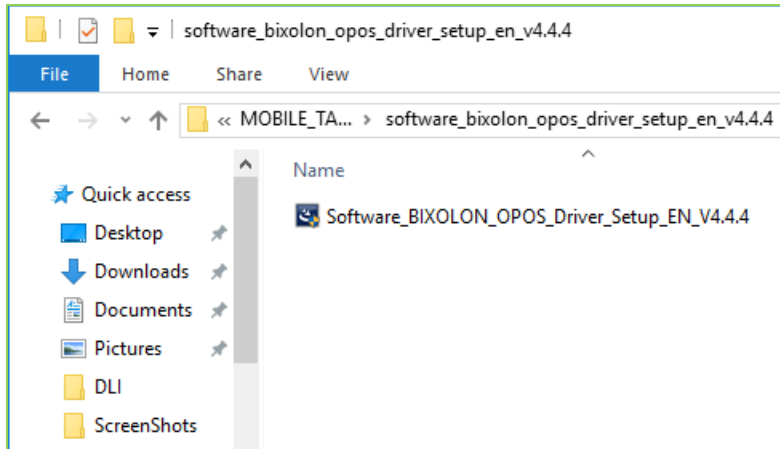
- After installation completion, a SPPR310 Installer dialogue box will open, asking Yes or No to restart the computer. Click **Yes**.



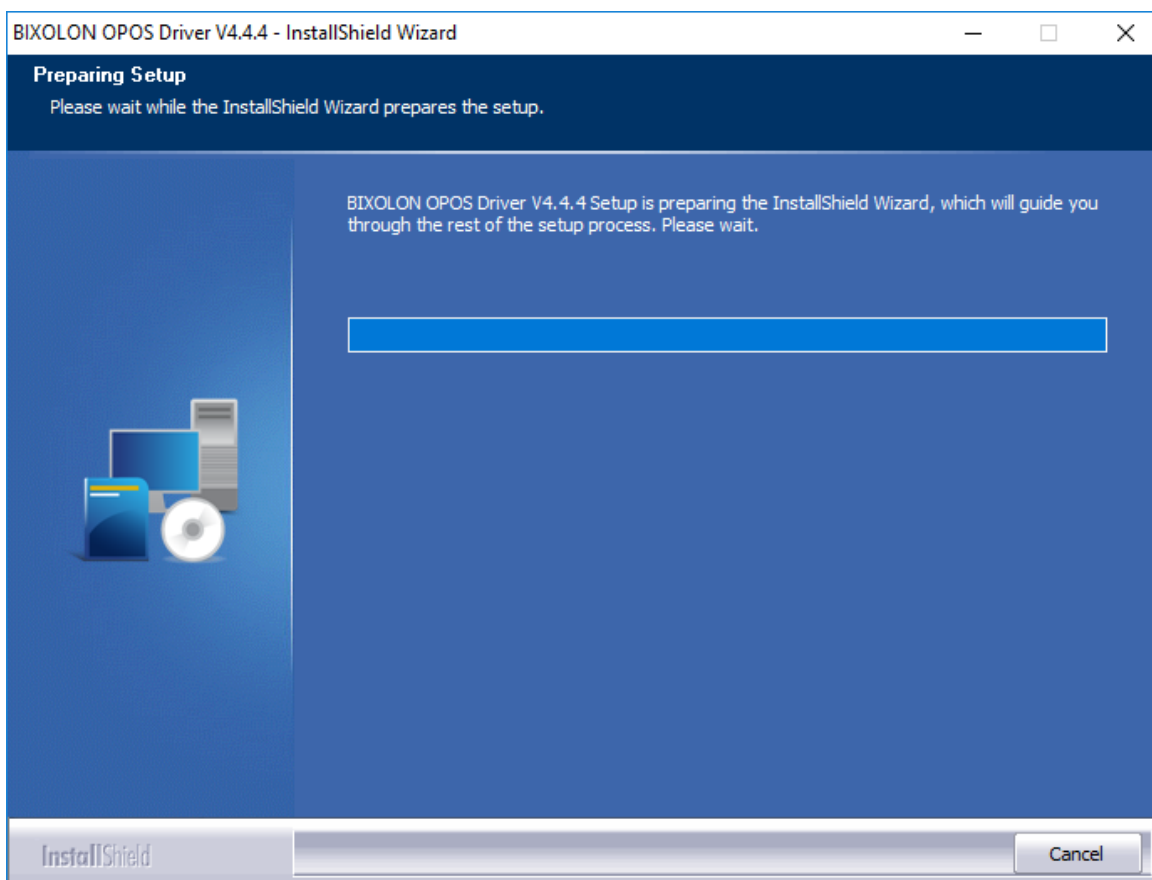
Bixolon OPOS Driver Installation

Now, the Bixolon OPOS Drivers needs to be installed, the following are the steps to install.

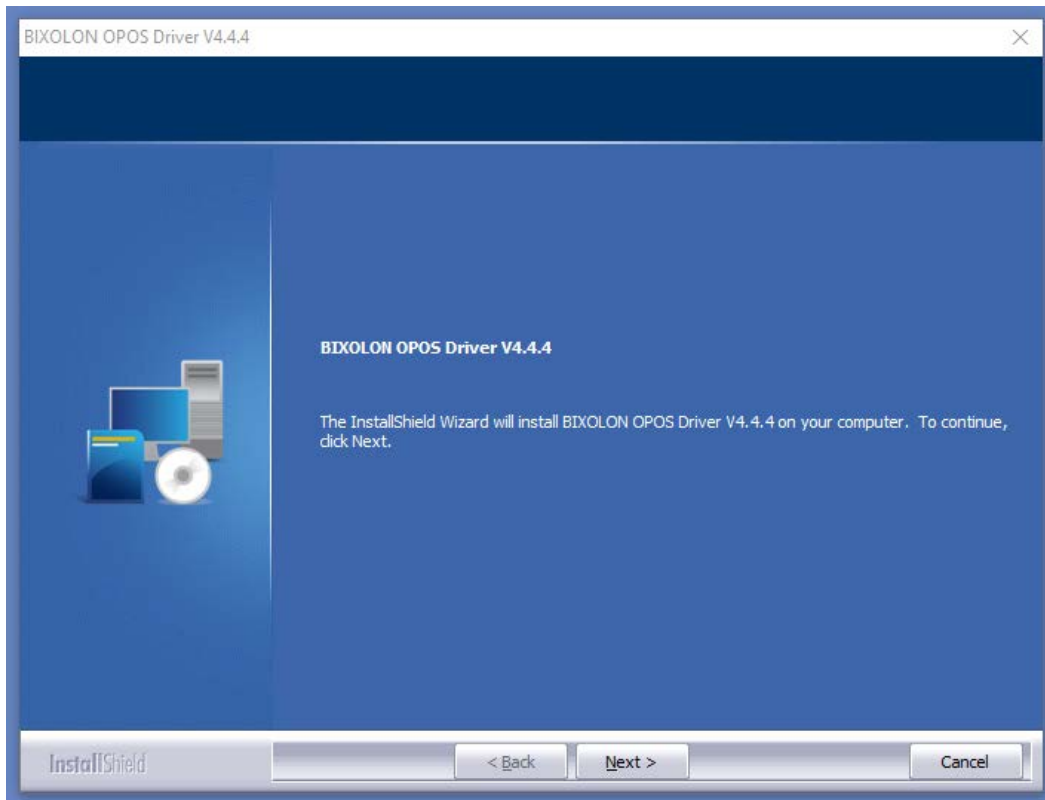
- Right-click on Software_BIXOLON_OPOS_Driver_Setup_EN_V4.4.4 and select Run As Administrator from the context menu.



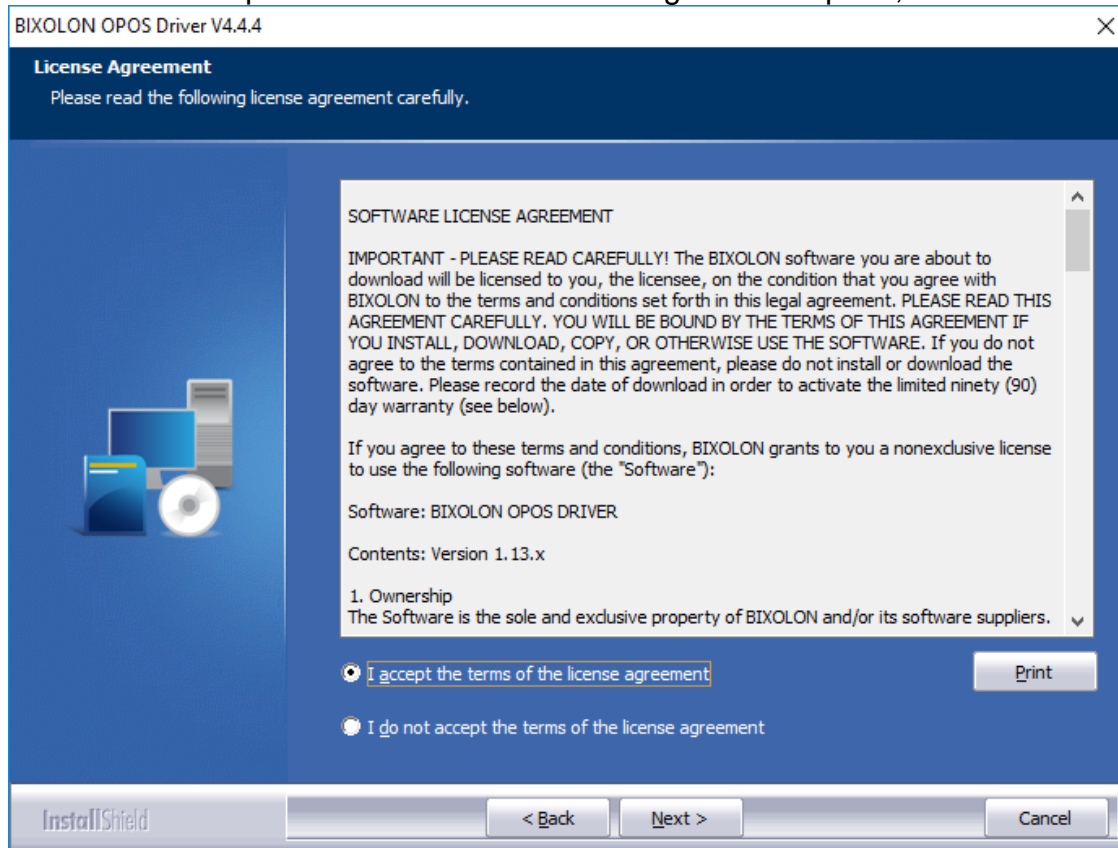
- Bixolon OPOS Driver V4.4.4 Install **Preparing Setup** message will appear.



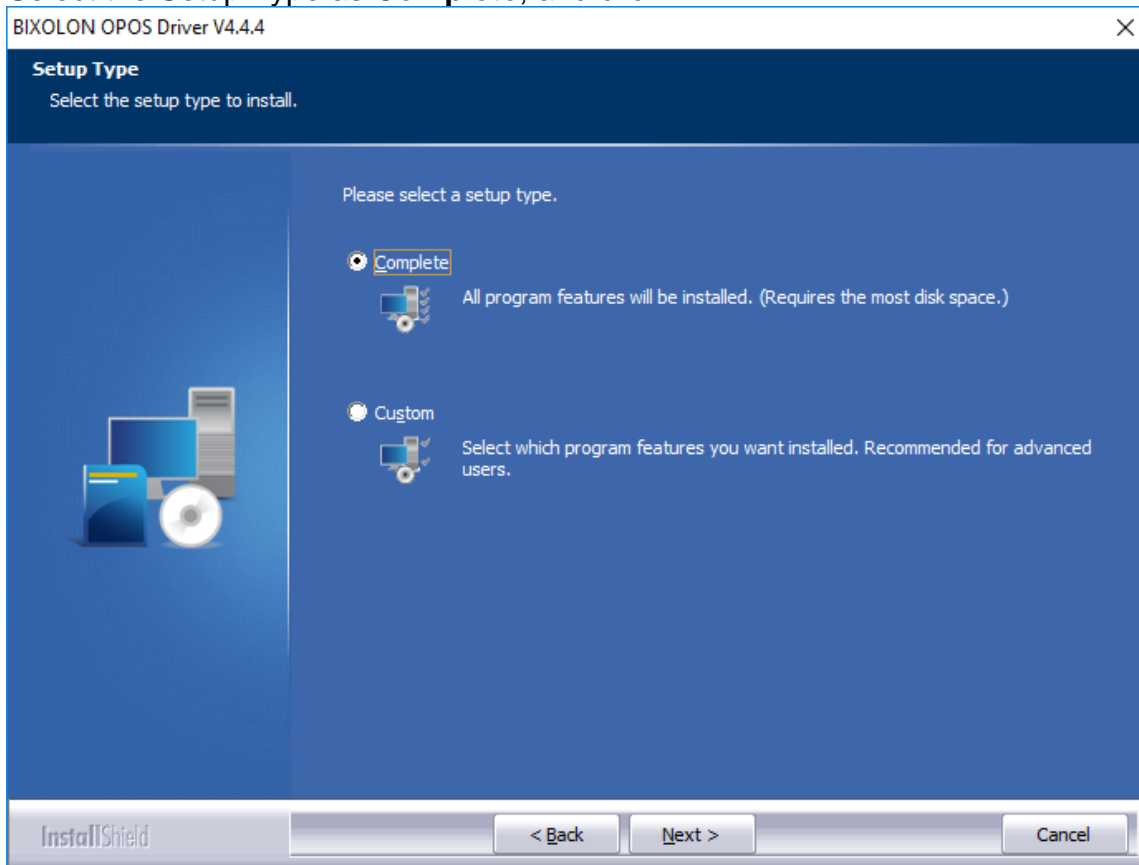
- The installation will begin, click **Next**.



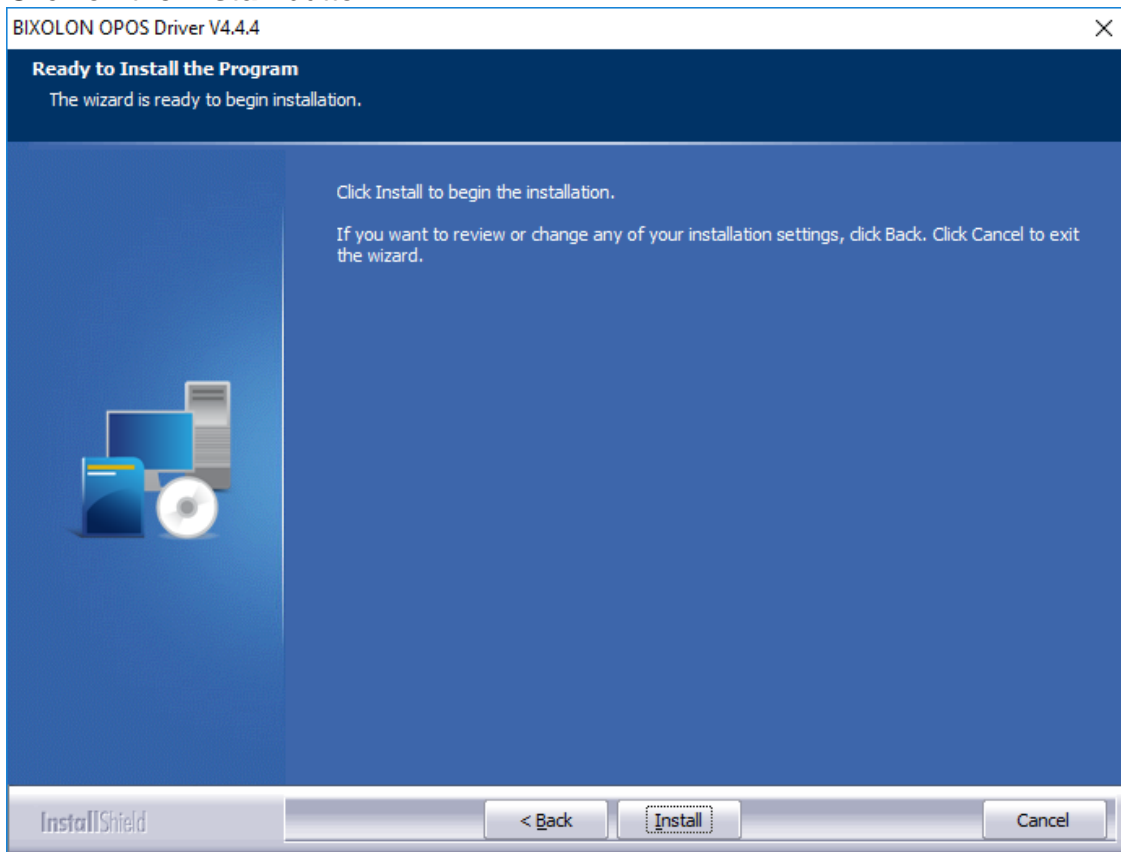
- Select the I accept the Terms of the License Agreement option, and click Next.



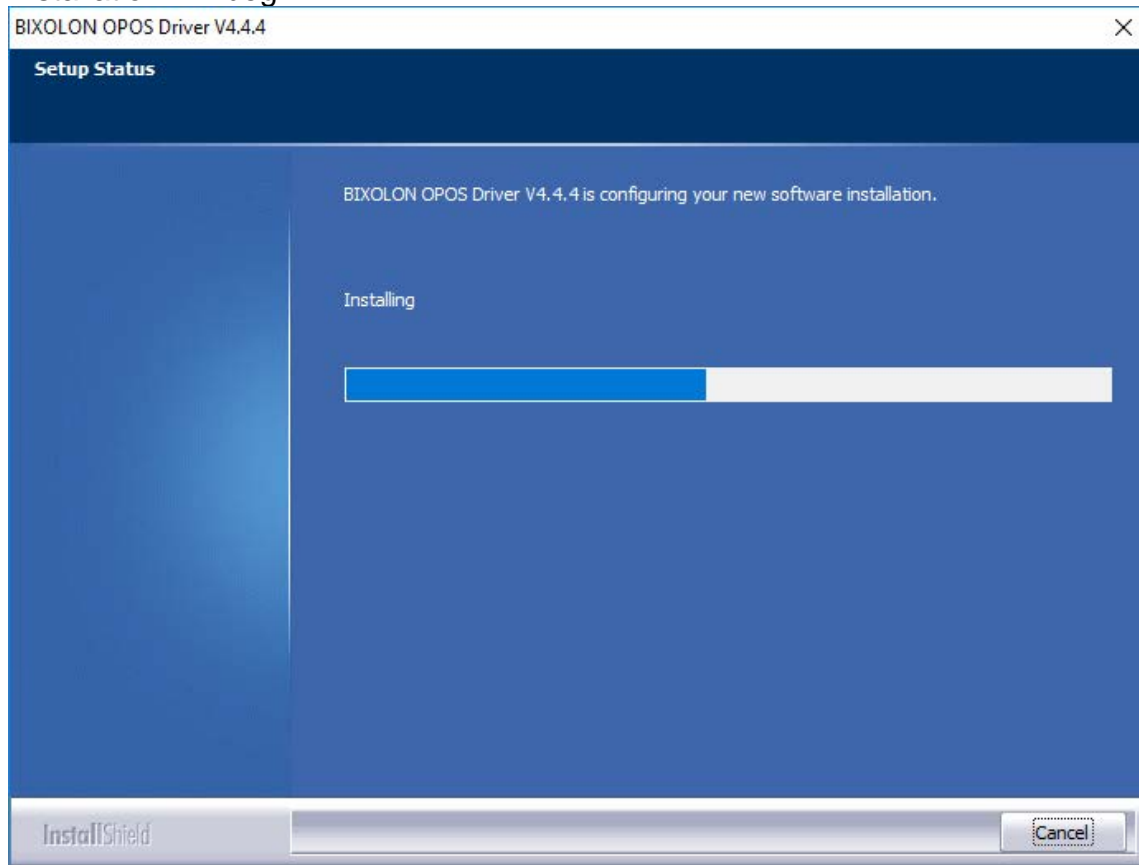
- Select the Setup Type as **Complete**, and click **NEXT**.



➤ Click on the **Install** button.



- Installation will begin.

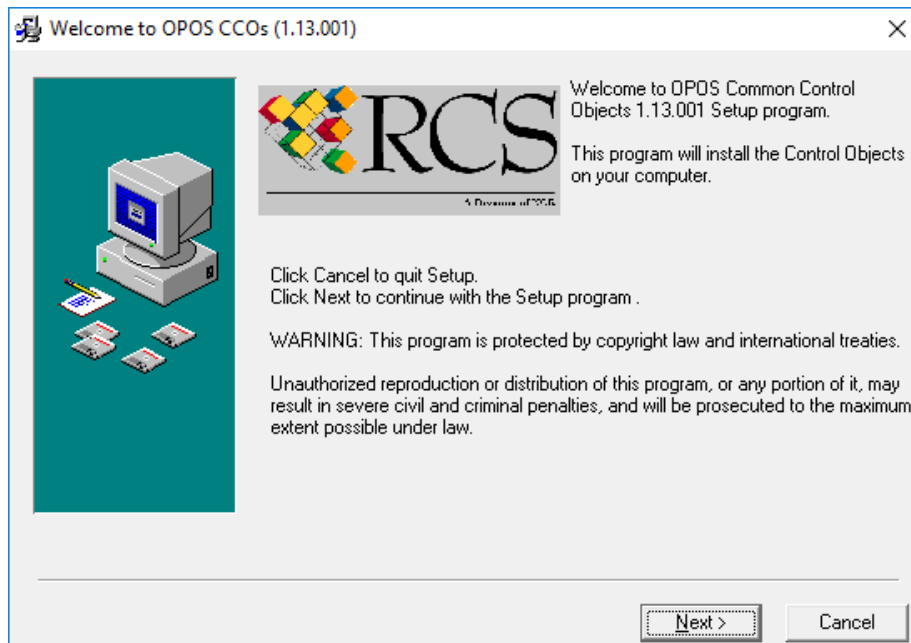


- After completing the installation, **Reboot** the Mobile device.

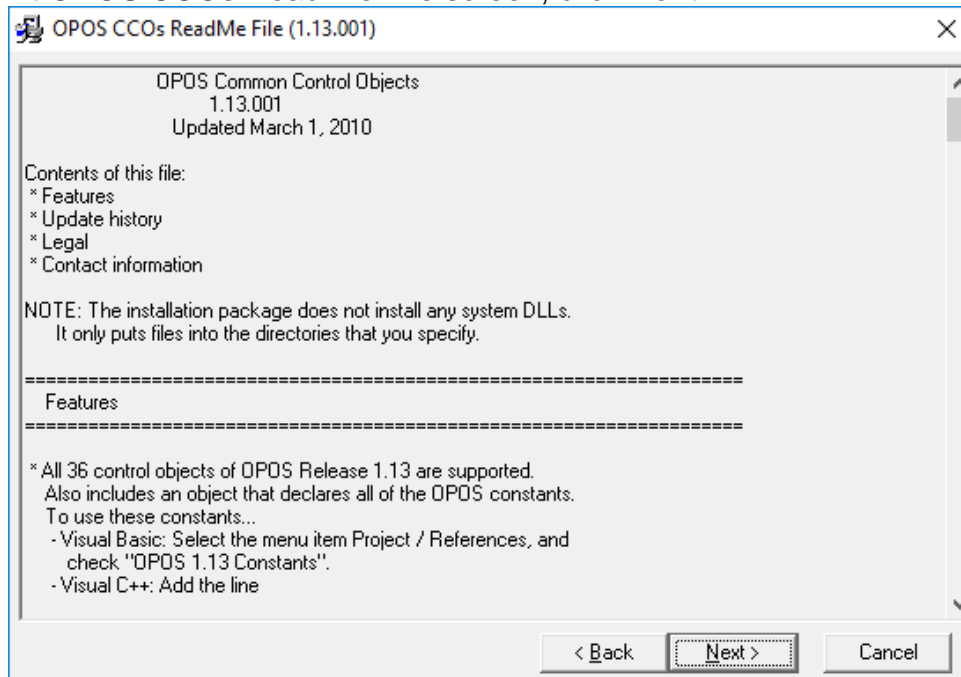
OPOS Driver Installation

The OPOS driver version 1.13.001 now needs to be installed, the following are the steps that need to be taken.

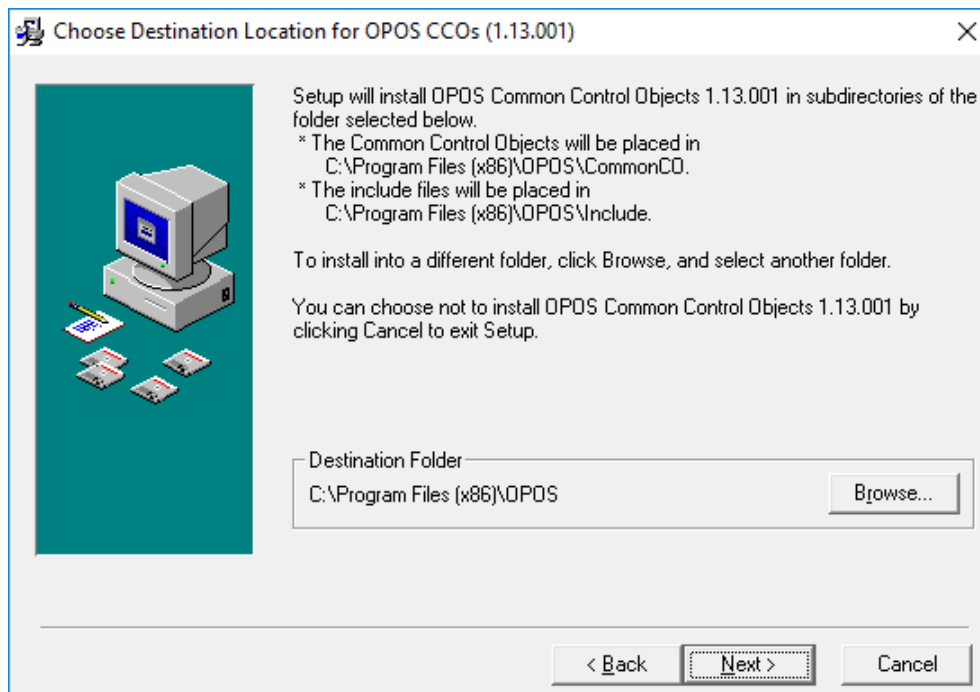
1. Right-click on **OposCCOs-1_13_001.exe**, and select **Run as Administrator** from the context menu.
2. The installation process will begin, a **Welcome to OPOS CCOs (1.13.001)** will open. Here, click **Next**.



3. At OPOS CCOs Read Me File screen, click **Next**.

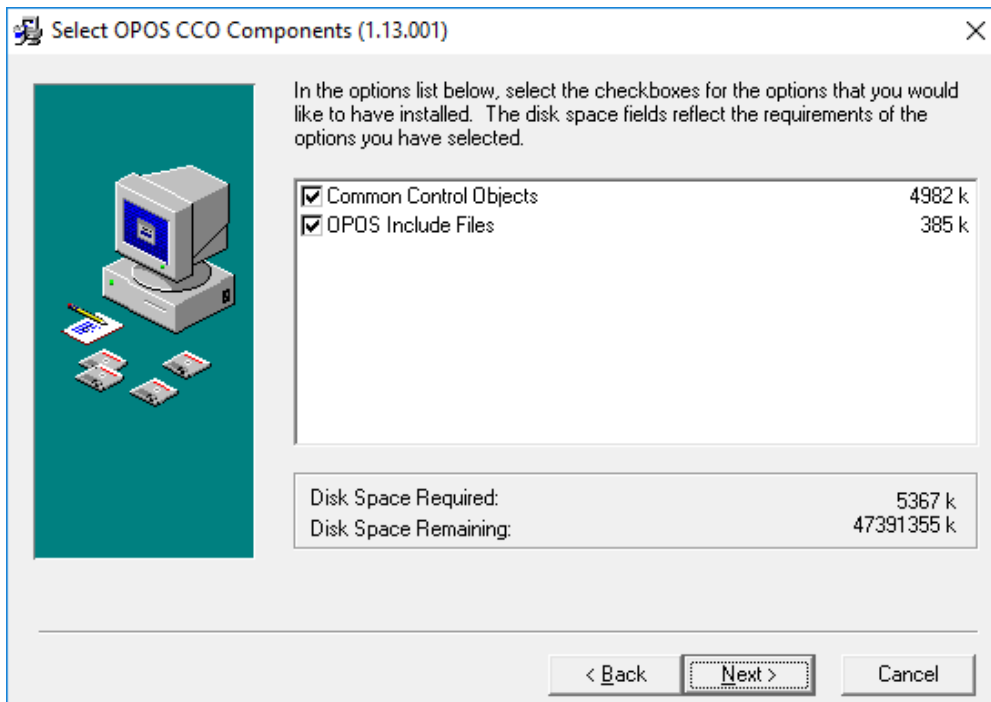


4. At Choose Destination Location screen, click **Next**.

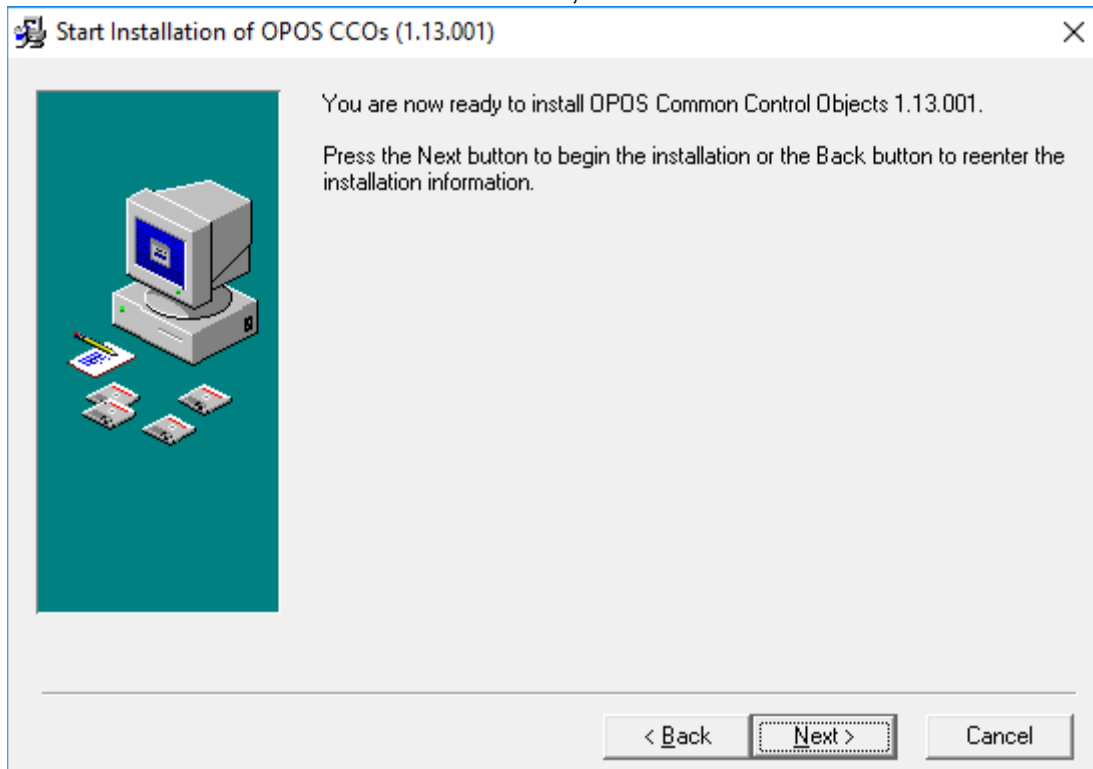


5. At the Backup Replaced OPOS Files screen, select **Yes** or **No** to backup any OPOS files, and click **Next**.

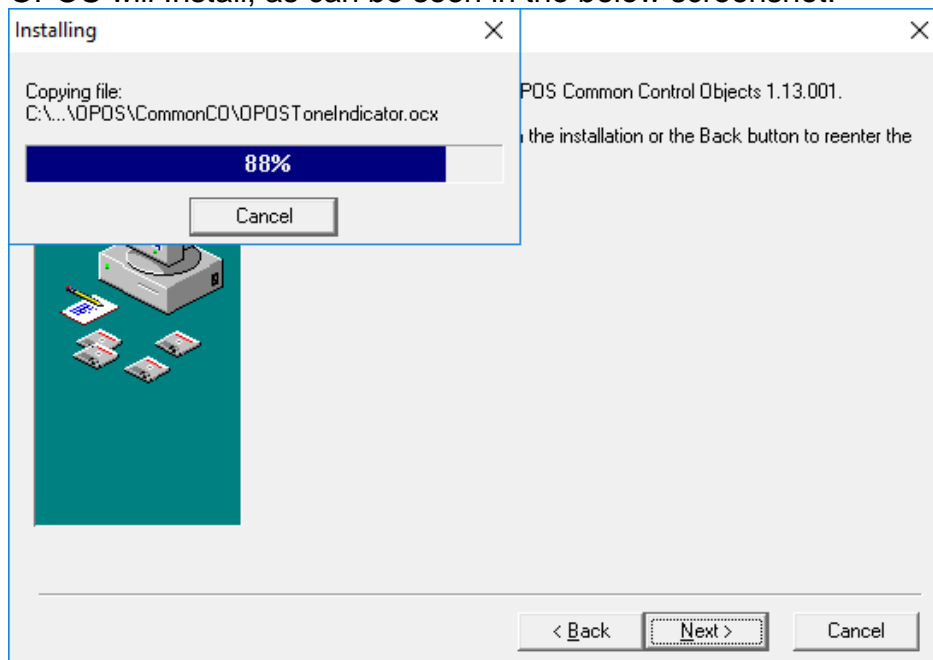
- At the Select OPOS CCO Components screen, make sure **Common Control Objects** and **OPOS Include Files** are selected, and click **Next**.



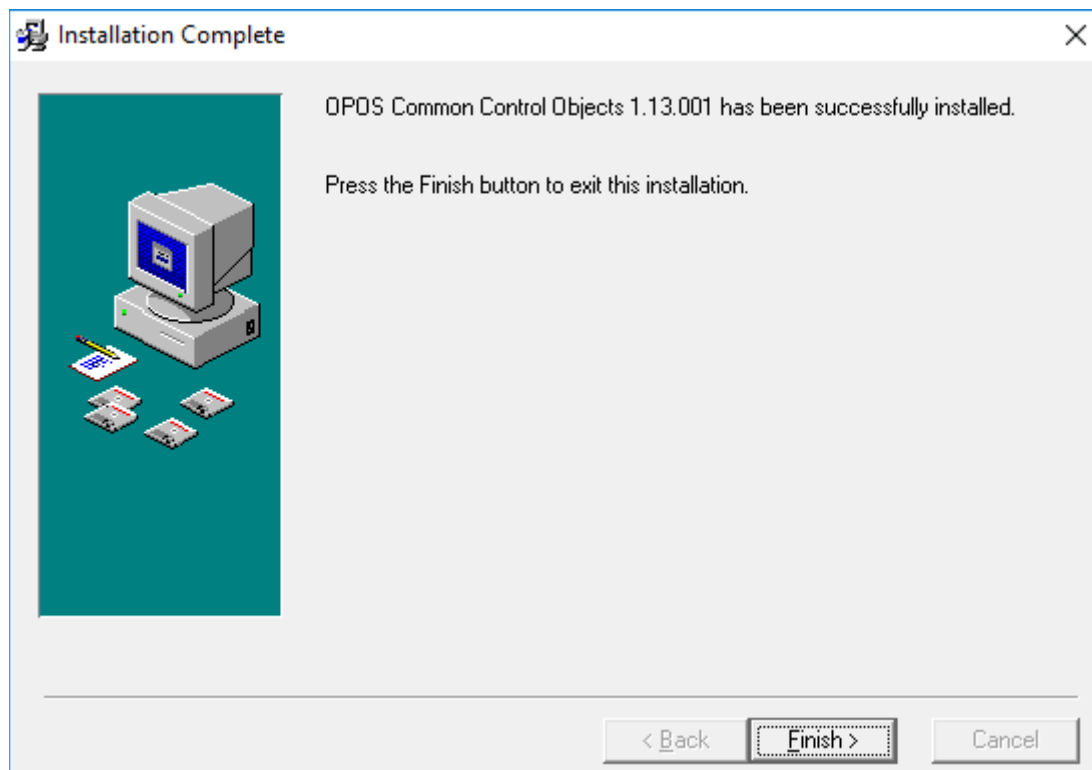
- At the Start Installation of OPOS screen, click **Next**.



8. OPOS will Install, as can be seen in the below screenshot.



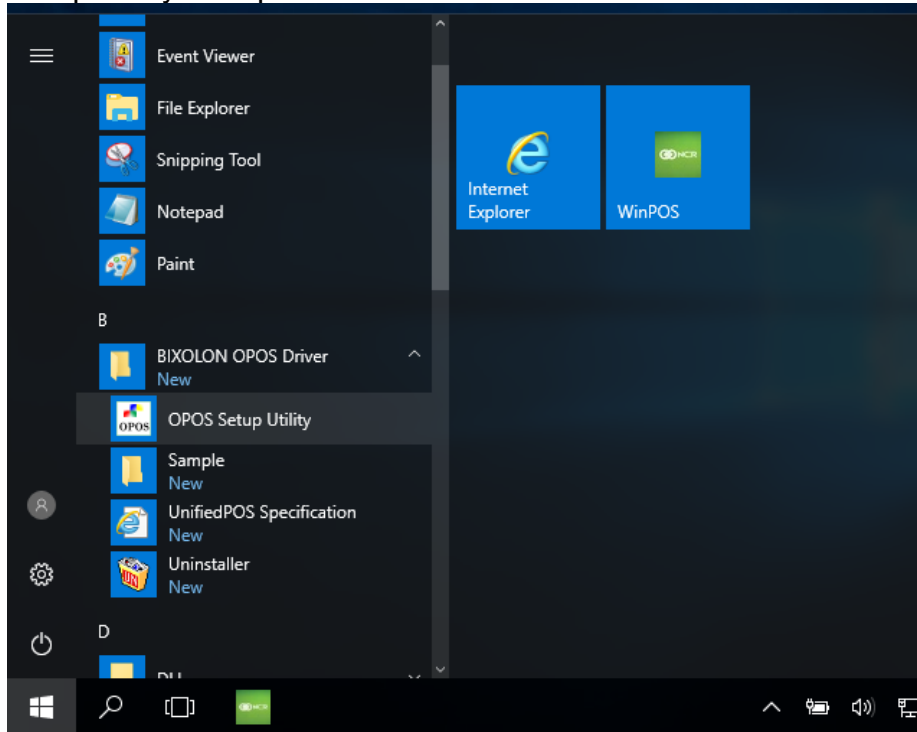
9. At the Installation Complete screen, click **Finish**, and **Reboot** the tablet.



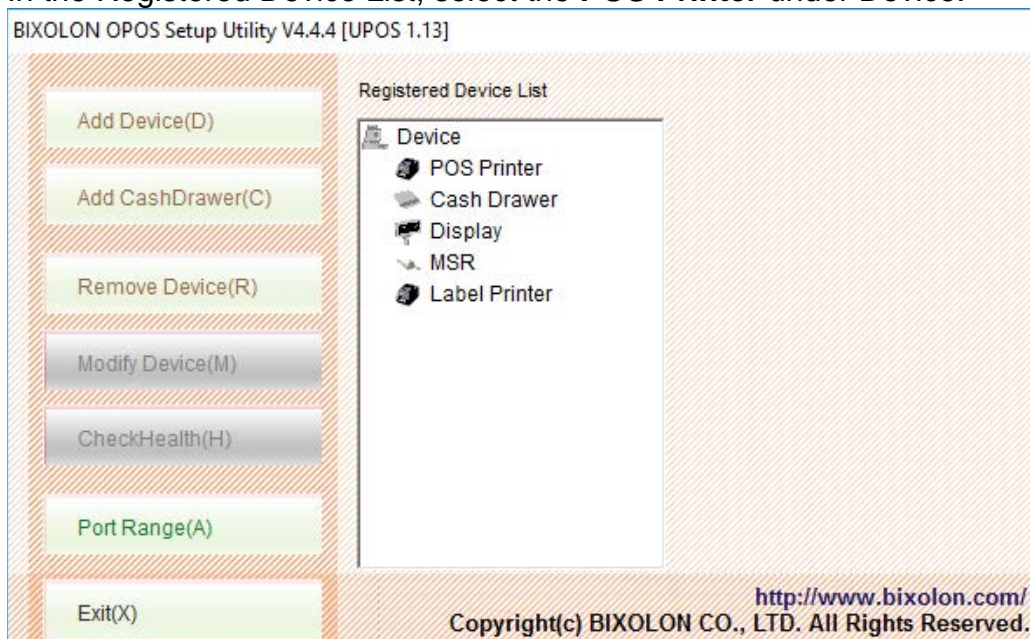
Printer Setup and Testing

Now that all the OPOS and BIXOLON OPOS Drivers have been installed, the user needs to go into the OPOS Setup Utility to assign and test the printer.

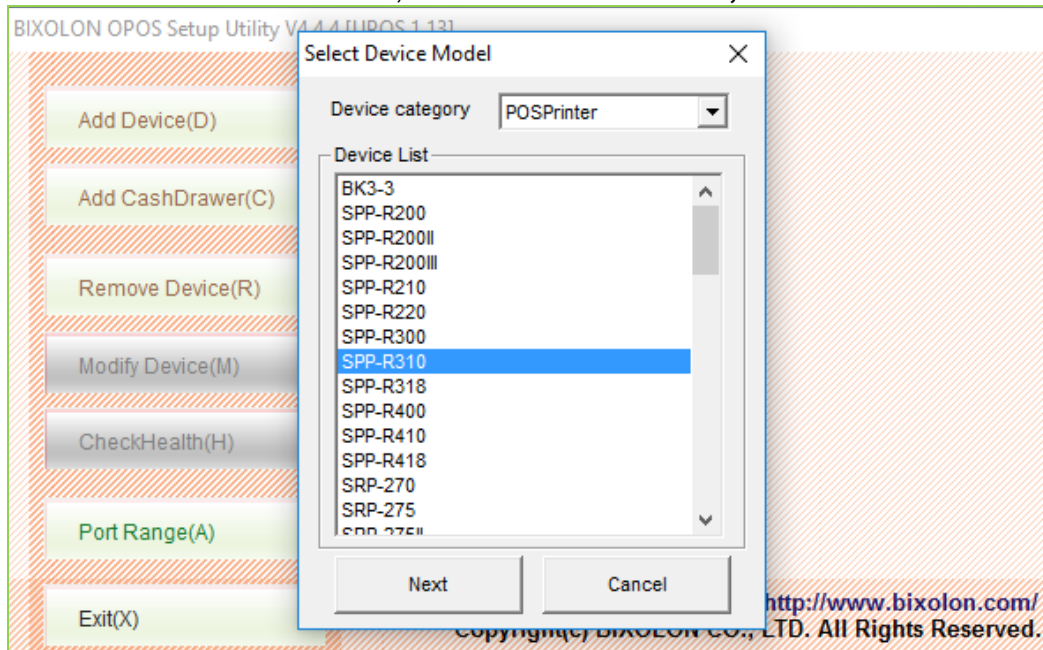
- Go to **START > BIXOLON OPOS Driver > OPOS Setup Utility**. The BIXOLON OPOS Setup Utility will open.



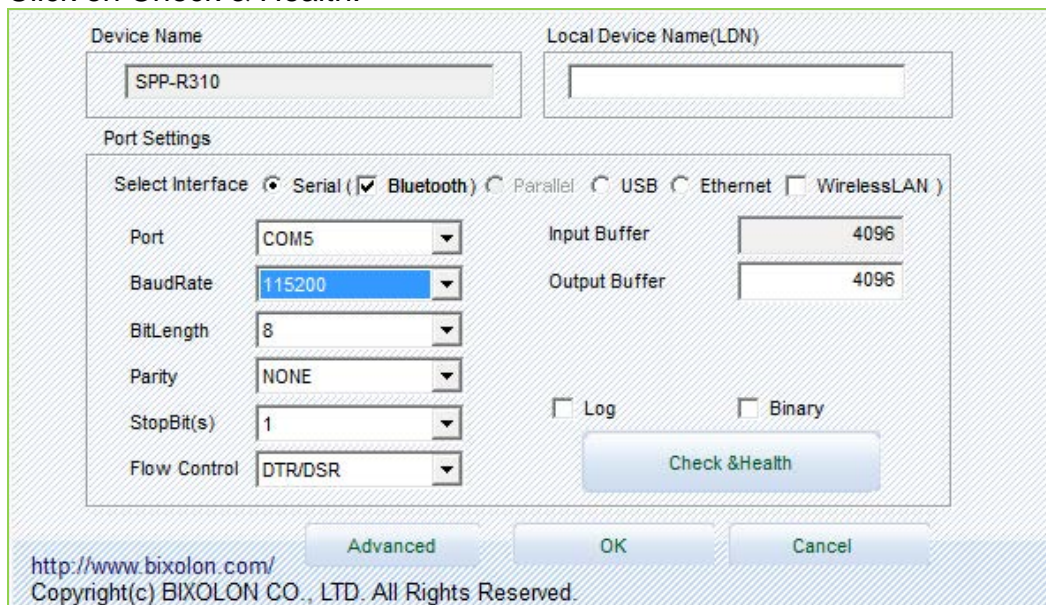
- In the Registered Device List, select the **POS Printer** under Device.



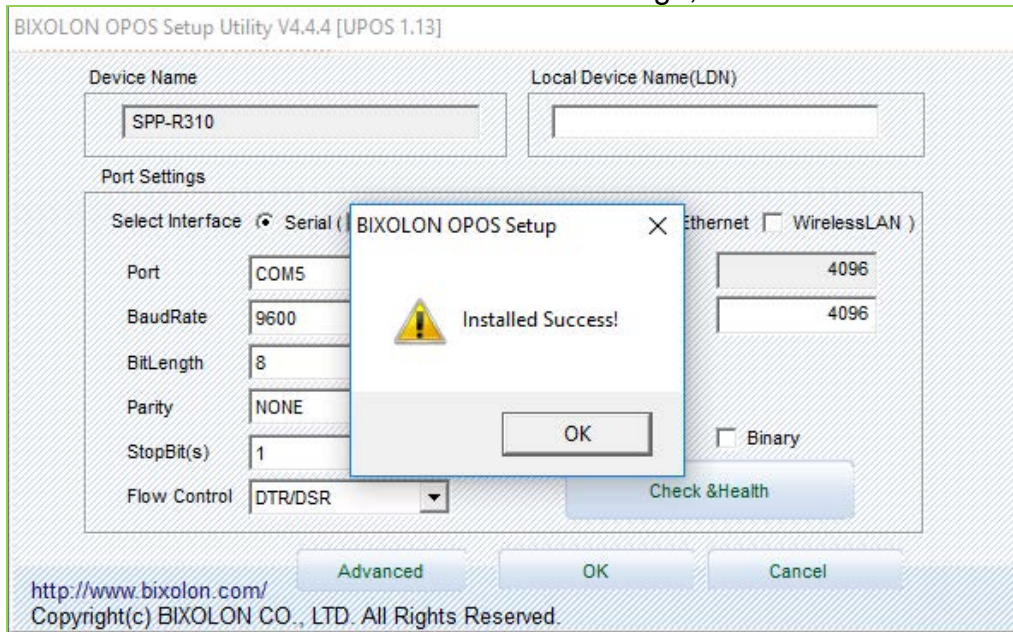
- Under Select Device Model, choose the **SPP-R310**, and click **Next**.



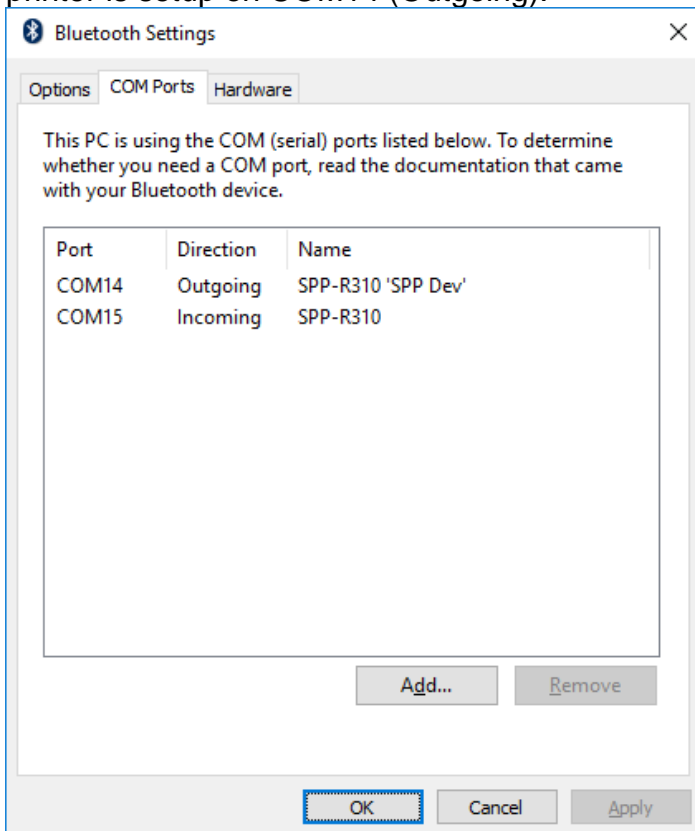
- A new screen will appear. Go to Port Settings section, make sure **Serial** is selected, enable **Bluetooth** (it is adjacent to Serial radio button), and then do the following.
 - Select the **Port** where the printer has been installed.
 - Select the BaudRate as **115200**.
 - Click on Check & Health.



- Should receive an “Installed Success!” message, click **OK**.

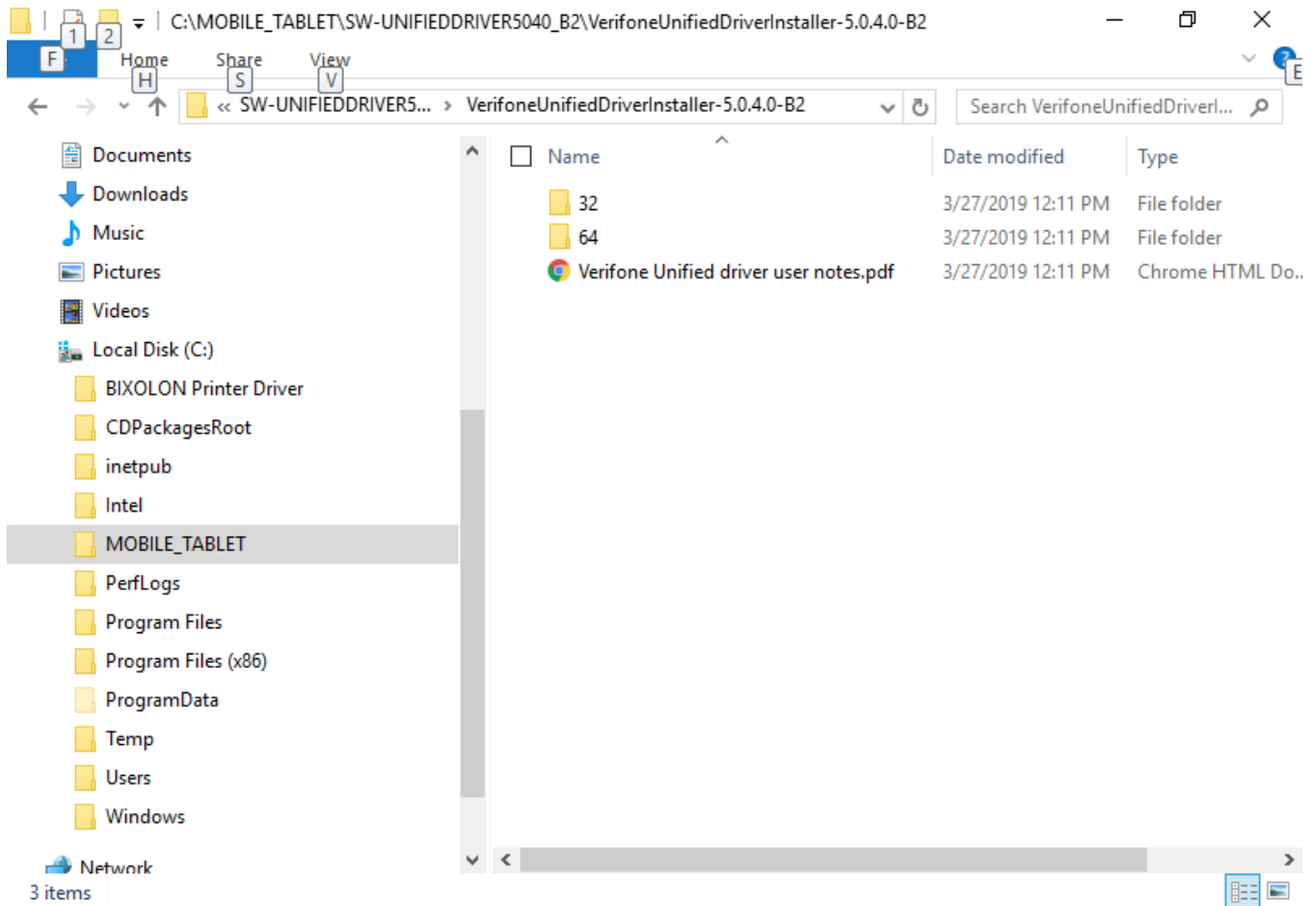


Note: If the test was not successful, go to **START > SETTINGS > Bluetooth Settings**. Under COM Ports, it will show what comport the printer is talking through. This will be the port to put in Port Settings in **BIXOLON OPOS Setup Utility**. In the example below, the printer is setup on COM14 (Outgoing).

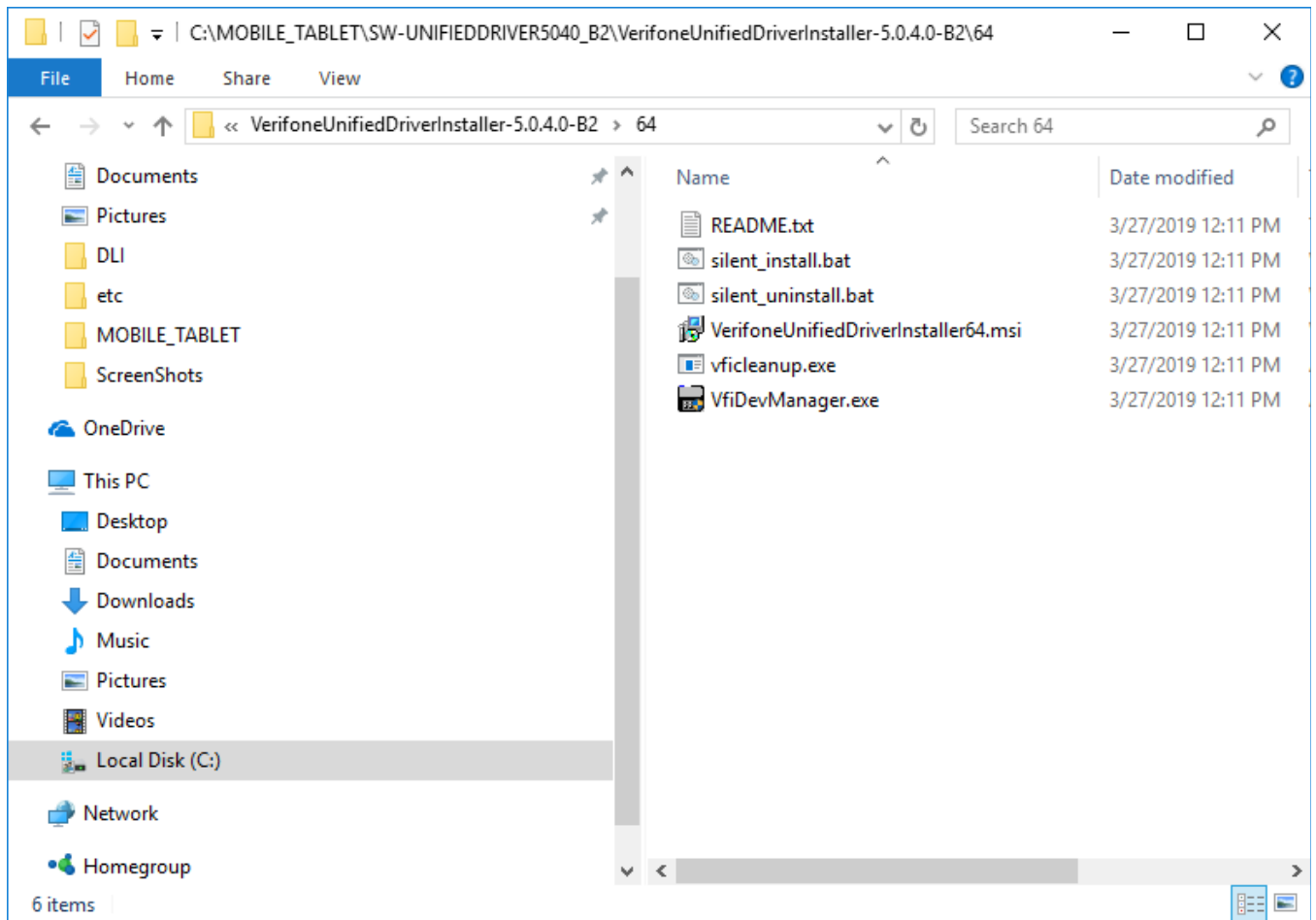


Installing Verifone Unified Driver

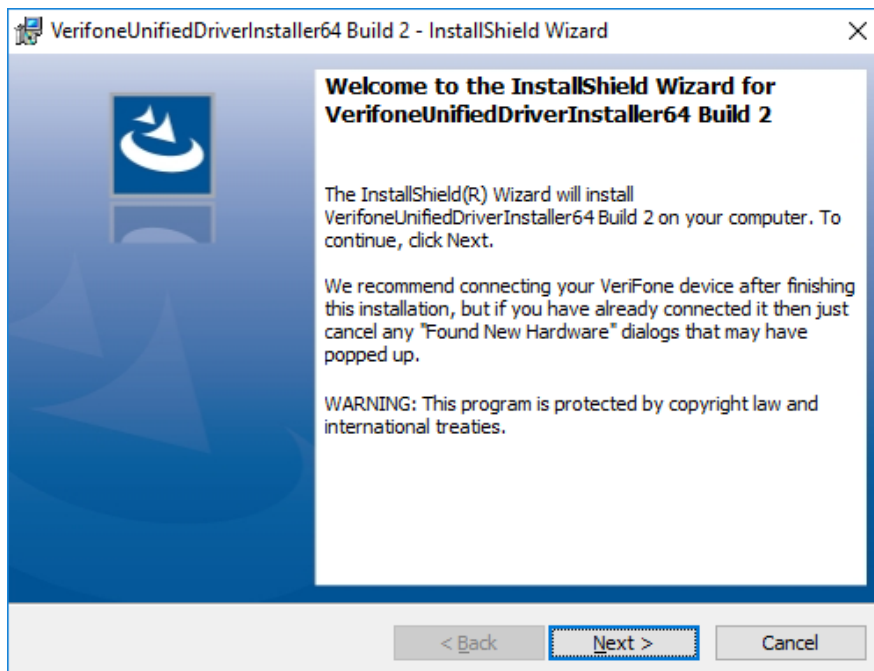
The Verifone Driver needs installed for the Verifone e355 Payment Terminal. Install the 32-Bit or 64-Bit, depending on the Mobile Tablet.



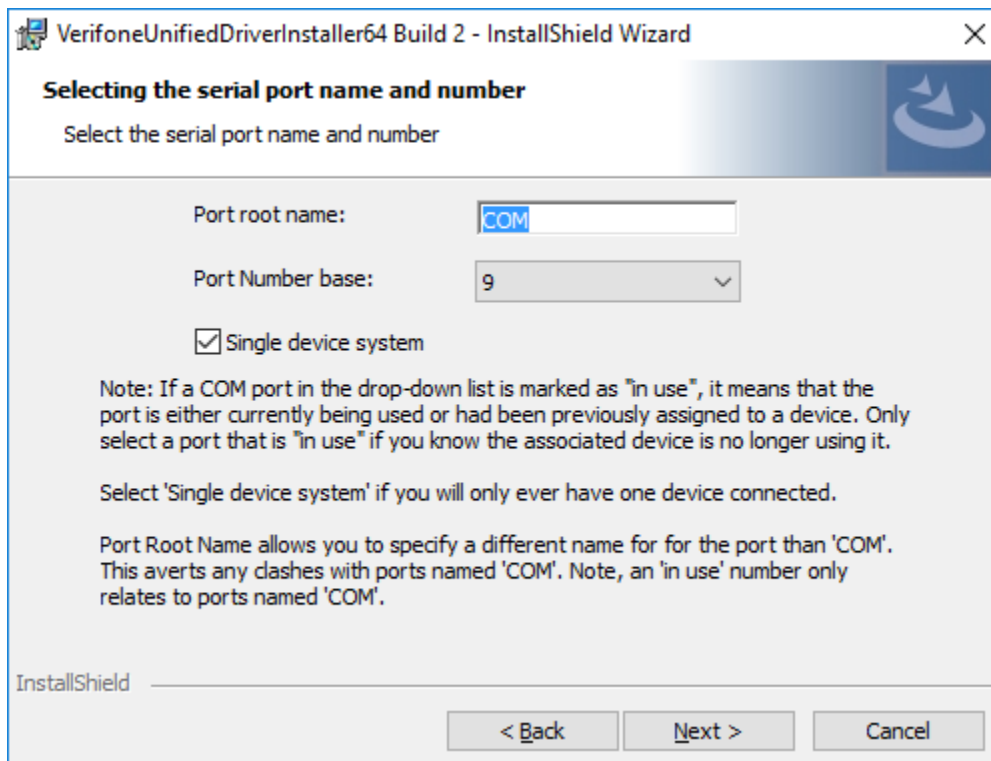
- To install, right-click on **VerifoneUnifiedDriverInstall64.msi** (or 32.msi), and Run as Administrator.



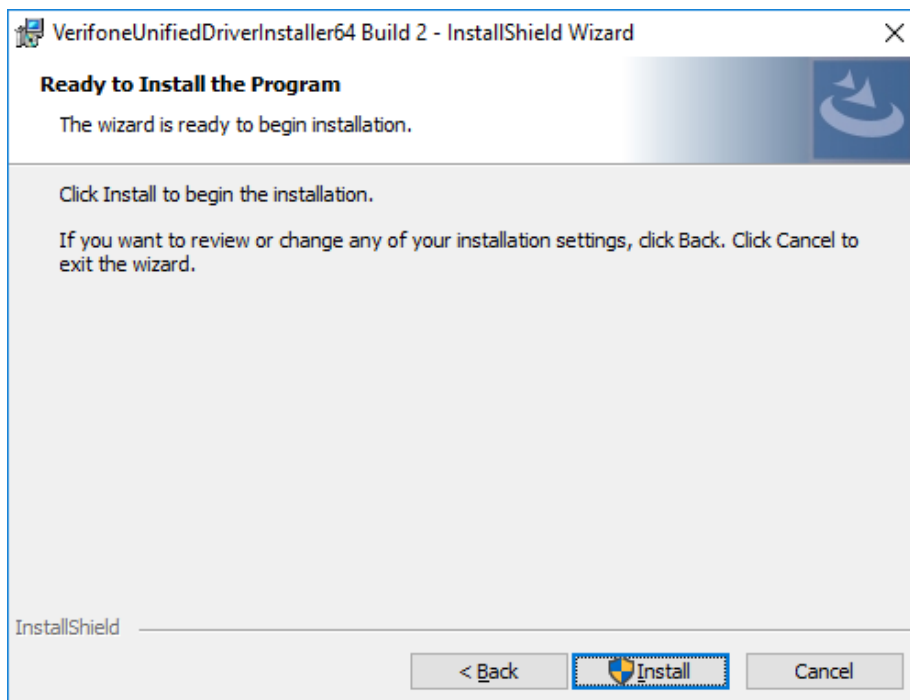
- At the “Welcome” screen, click on **Next**.



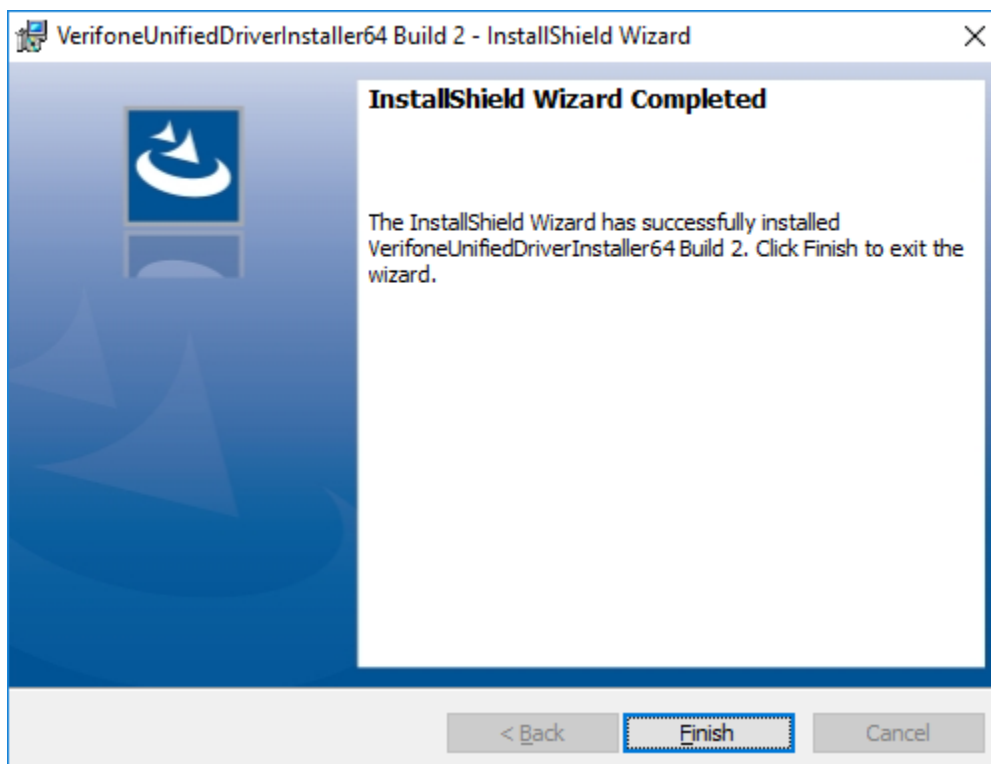
- Keep the Port Root Name, as **COM**. Choose the Port Number that the payment terminal is connected.
 - Click on “Single Device System”
 - Click **Next**



- At “Ready to Install the Program” screen, click on **Install**.



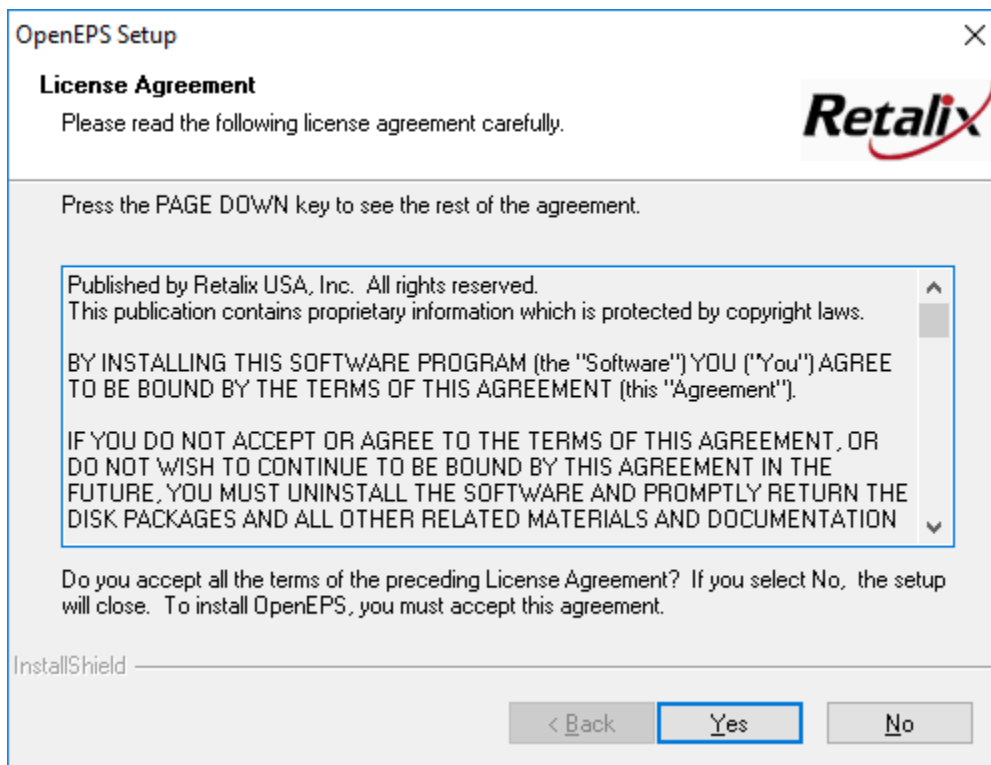
- Install will Complete. Click **Finish**.



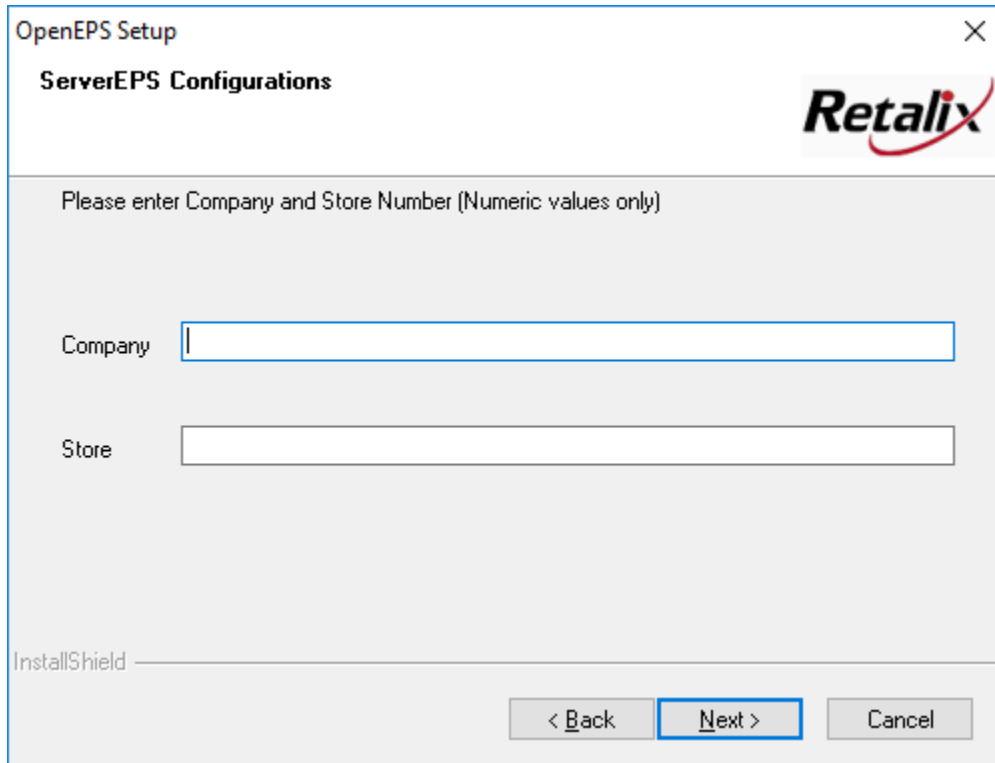
Installing OpenEPS

The OpenEPS Install will need run to communicate to Connected Payments for the Verifone e355 Payment Terminal.

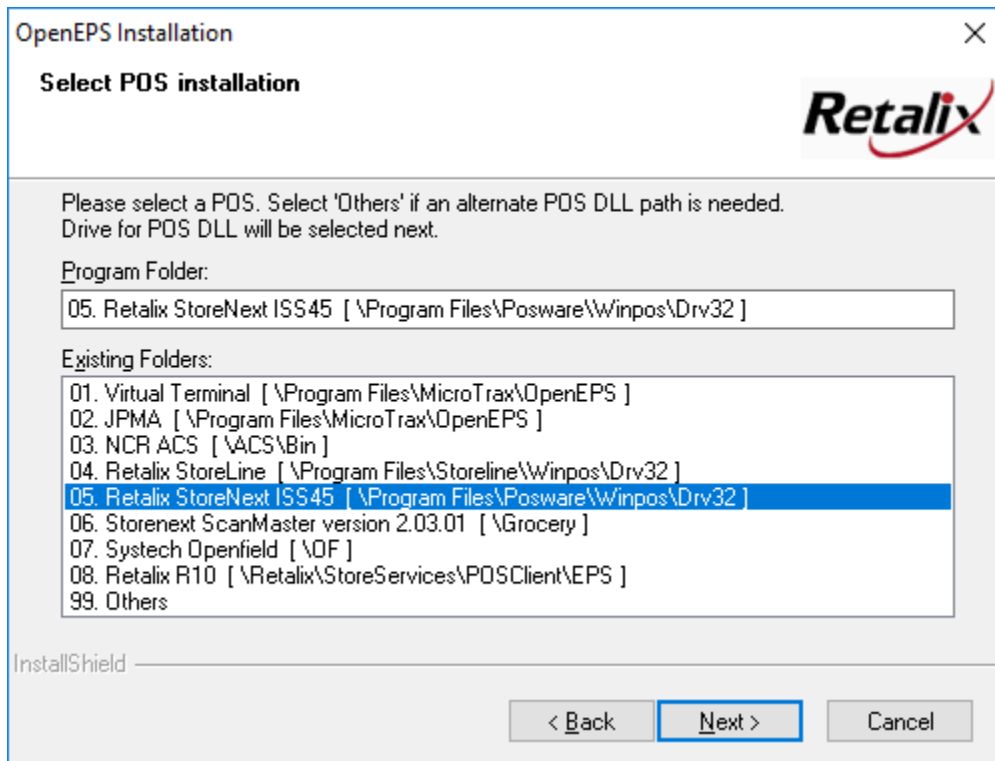
- Run the OpenEPS install and at “License Agreement”, click **YES**.



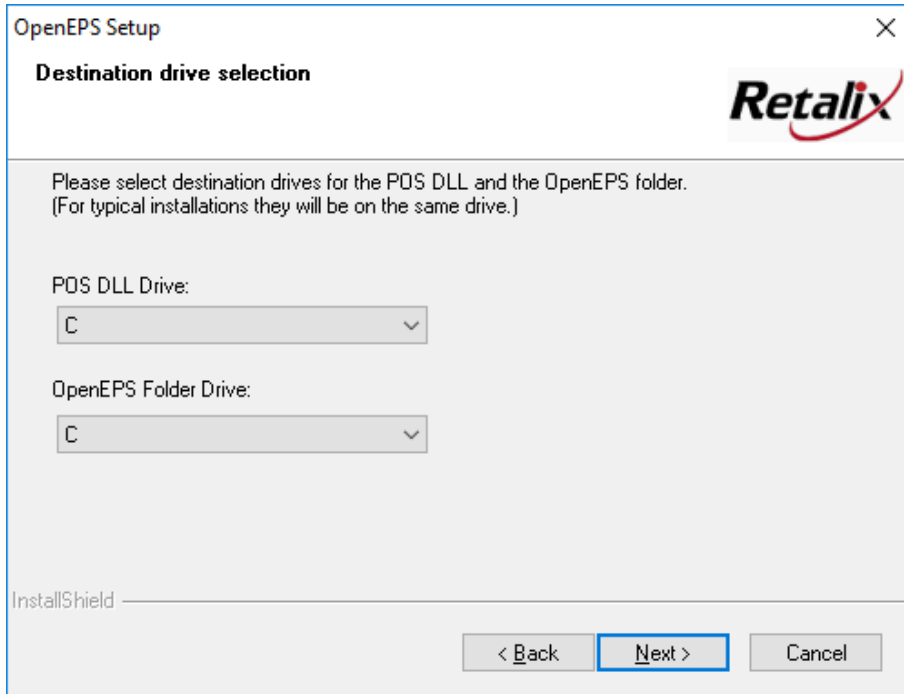
- Enter ServerEPS Configuration for **Company** and **Store**, and click **Next**.



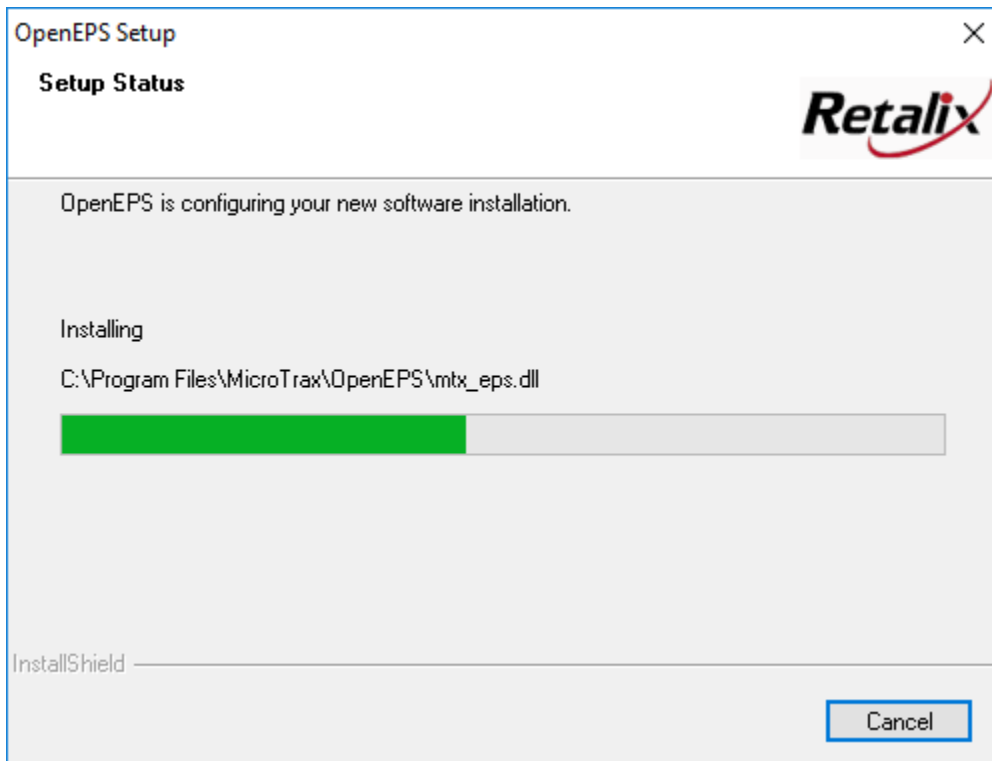
- Select the “Retalix StoreNext ISS45”, and click **Next**.



- Select the POS DLL Drive and OpenEPS Folder Drive = "C".
- Click **Next**.



- After the install runs, reboot.



- When setting up the Lane in Connected Payments, select “**XPI-e355**” for the Pin Pad Type.

The screenshot displays the 'Connected Payments Configuration Manager' interface. The 'Terminal Configuration' section is active, showing the 'PIN Pad Configuration' tab. The 'OpenEPS PIN Pad Type' is set to 'XPI-e355'. The 'OpenEPS PIN Pad' section contains the following fields:

- SCAT Com Port: 13
- Screen File Name: Xpie355.zip
- RKI Code File: RKIe355.zip

The 'Screen Key Selection' section is titled 'Layer 1' and contains a table for configuring buttons:

	Tender	Button Label
Button 1	Credit	Credit
Button 2	Debit	Debit
Button 3	EBT	EBT
Button 4	Gift Card	GiftCard
Button 5		
Button 6		

Below the table are three checkboxes:

- Allow Enter=YES / Clear=NO in Addition to Screen Buttons
- Verishield Enabled
- Allow Customer-Entered Cash Back in Cents (Instead of Whole Dollars)

On the right, a preview window titled 'Terminal' shows the 'e355 Terminal - Customer Device' screen with the text: 'Welcome to Trish Beer Mart' and 'Select Payment Type'.

Installing ENCOR POS and ENCOR Server Settings

Before installing ENCOR POS on the Mobile Tablet, some settings in ENCOR Server will need to be done.

- Sign into **ENCOR Server**, and go to **SYSTEM > POS SETUP > POS CONFIGURATION**.
- Select and double-click a **POS number** for the Mobile Tablet, and select **Active Till** flag.
- Under the WinPOS H/W tab, go to the Printer section, select Type as **OPOS Generic**, and checkmark **Use OPOS**.

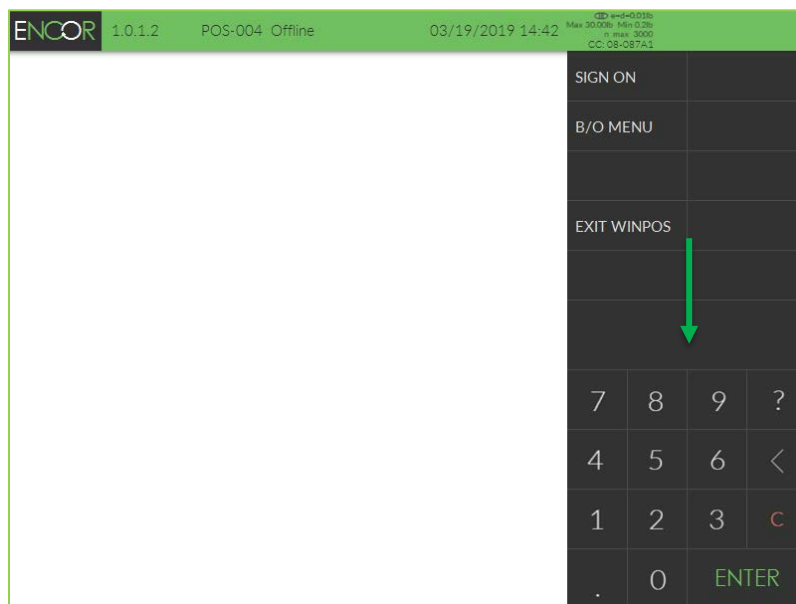
The screenshot displays the 'WinPOS H/W' configuration tab in the ENCOR Server. The interface is divided into several sections: General, Keyboard, Drawer, Scanner1, Scanner2, Customer Display, Scale, and Printer. The 'Printer' section is highlighted with a green box and contains the following settings: Type: OPOS Generic, Baud Rate: None, Port: 0, and the 'Use OPOS' checkbox is checked. Green arrows point to the 'Type' dropdown and the 'Use OPOS' checkbox. Other sections like 'General' and 'Scale' are also visible but not highlighted.

- Under the “E-Ticket – OPOS tab, set OPOS Printer Driver Name as **SPP-R310**, click **APPLY**.
- Under the “Auth.-EFT-I/F” Tab, and under **Authorization** and **Type**, select **EFT**.
 - Click **APPLY**.

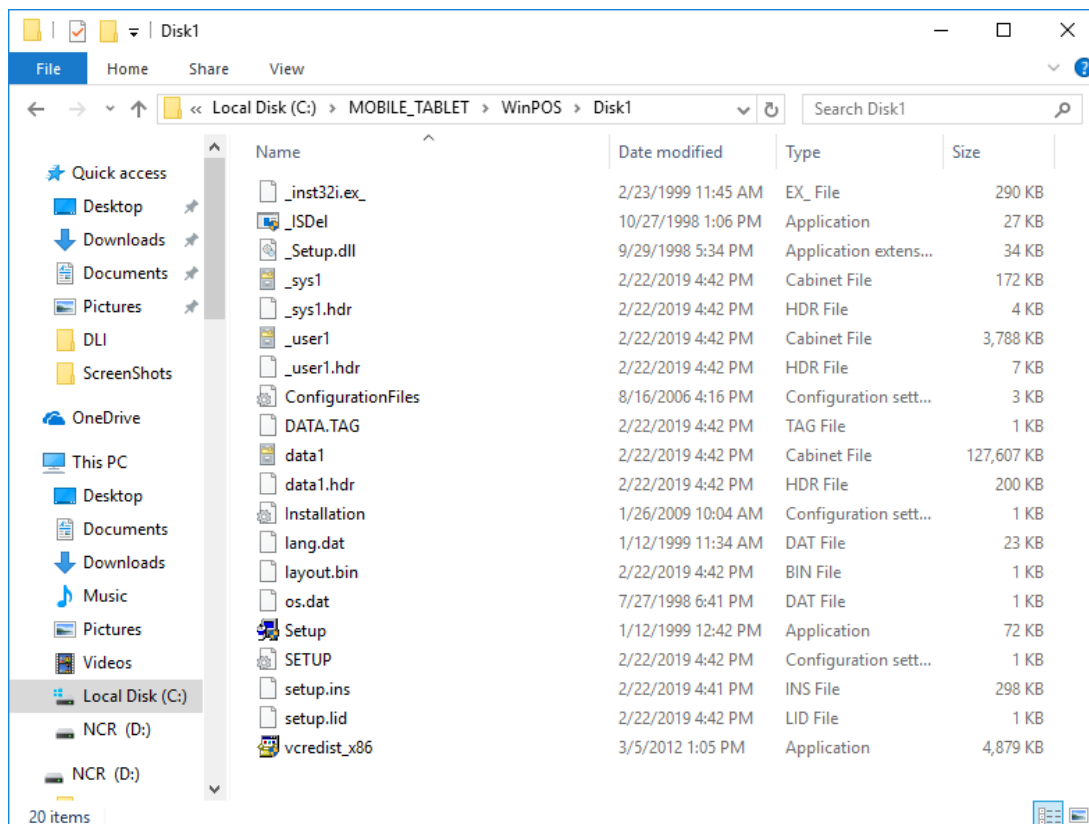
➤ Exit the POS Configuration.

➤ Go to **SYSTEM > POS SETUP > Keyboard Programming**. It is recommended to not use Program Keys A-I. User should setup 48-57 keys as the number keys for the key pad on the touch screen for the ENCOR POS.

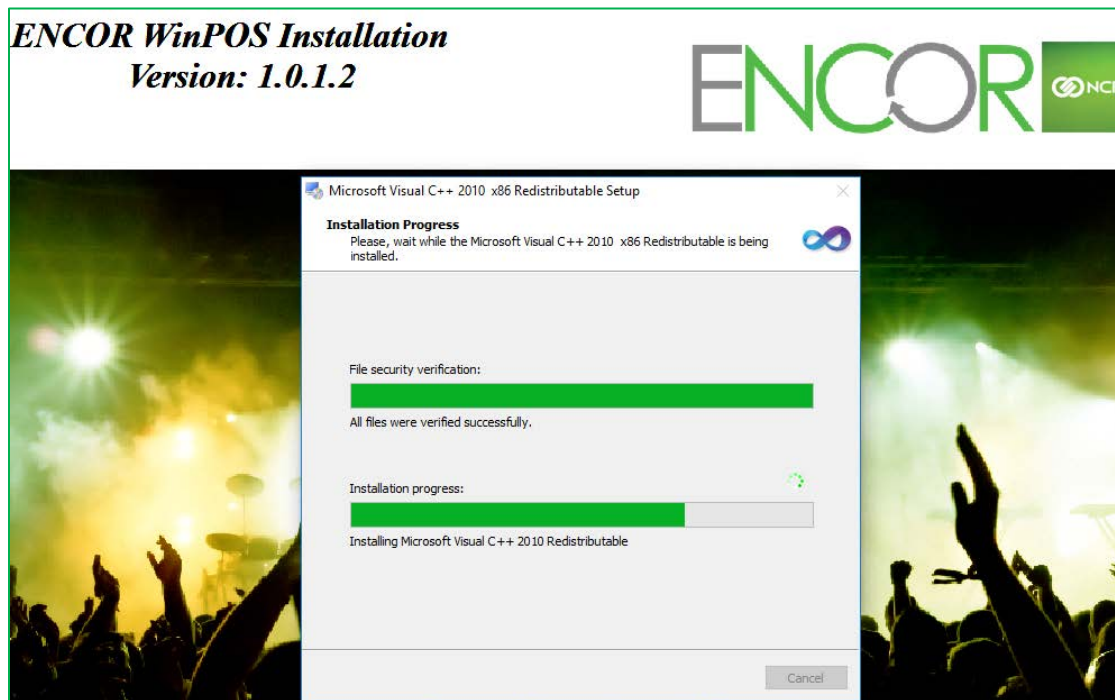
Code	Key	Sale	Tender	Priv.
41	[0]	0908 NO SALE	0908 NO SALE	0
42	[*]	0042 [*] Multiply	0042 [*] Multiply	0
44	[.]	0978 STORE COUPON	0978 STORE COUPON	0
46	[.]	0046 [.] Decimal point	0046 [.] Decimal point	0
48	[0]	0048 [0]	0048 [0]	0
49	[1]	0049 [1]	0049 [1]	0
50	[2]	0050 [2]	0050 [2]	0
51	[3]	0051 [3]	0051 [3]	0
52	[4]	0052 [4]	0052 [4]	0
53	[5]	0053 [5]	0053 [5]	0
54	[6]	0054 [6]	0054 [6]	0
55	[7]	0055 [7]	0055 [7]	0
56	[8]	0056 [8]	0056 [8]	0
57	[9]	0057 [9]	0057 [9]	0
60	[<]	0008 [<] BACK SPACE	0008 [<] BACK SPACE	0
75	[K]	0048 [0]	0048 [0]	0
76	[L]	0013 [ENTER]	0013 [ENTER]	0
77	[M]	PRESET	PRESET	0
78	[N]	PRESET	PRESET	0
79	[O]	0822 DECLARATION	0822 DECLARATION	0
80	[P]	0810 POS REPORT	0810 POS REPORT	0
81	[Q]	PRESET	PRESET	0
82	[R]	0807 TRAINING MODE	0807 TRAINING MODE	0



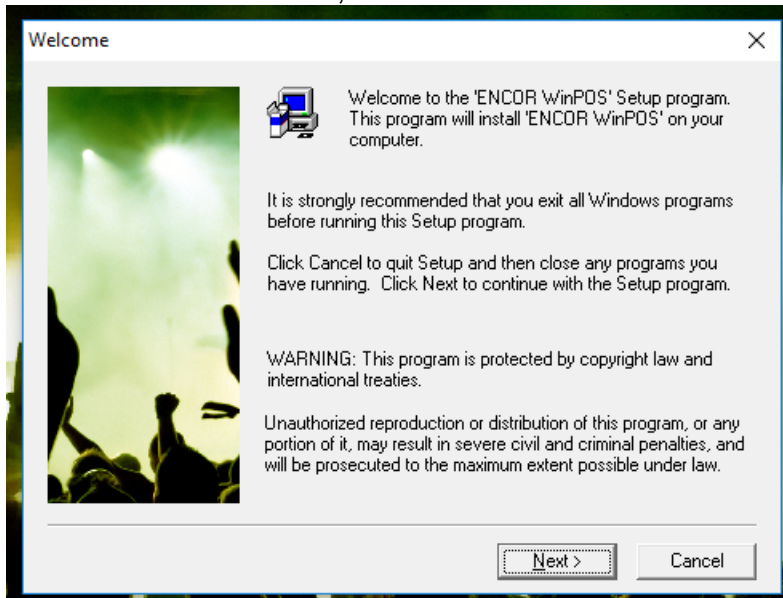
- On the POS, right-click on **Desktop** and select **DISPLAY SETTINGS** from context menu, and change the Resolution to **800x600**.
- To install ENCOR POS, go to the **WINPOS** folder and run the **SETUP** file.



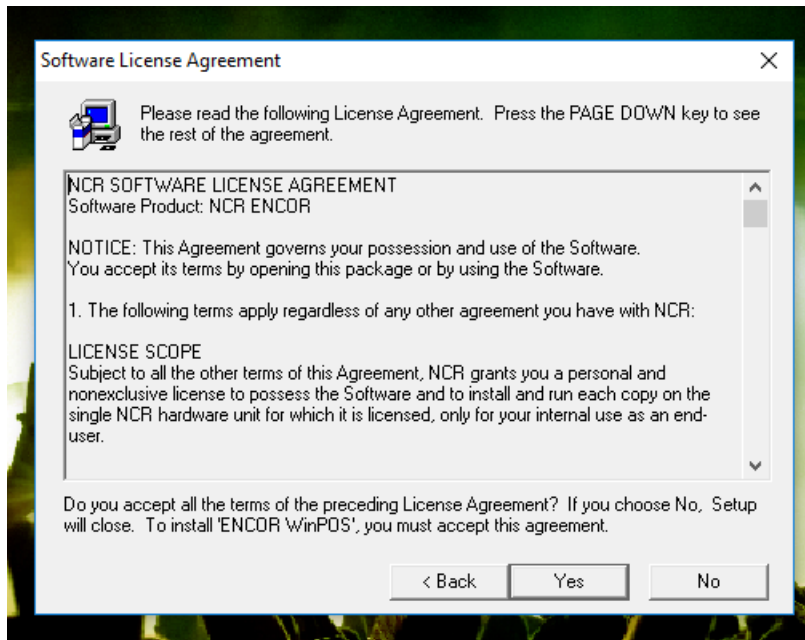
- The Installation Progress screen shows with progress bars.



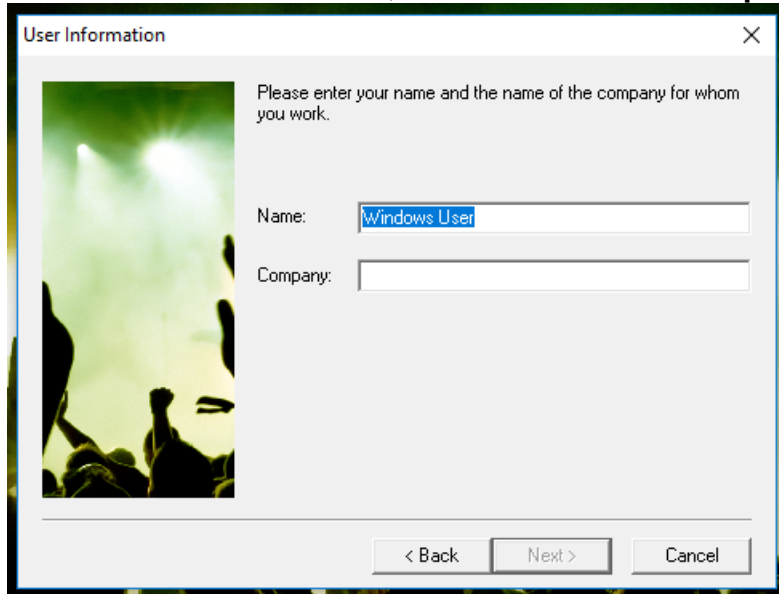
- At the Welcome screen, click **NEXT** to continue the installation of the POS.



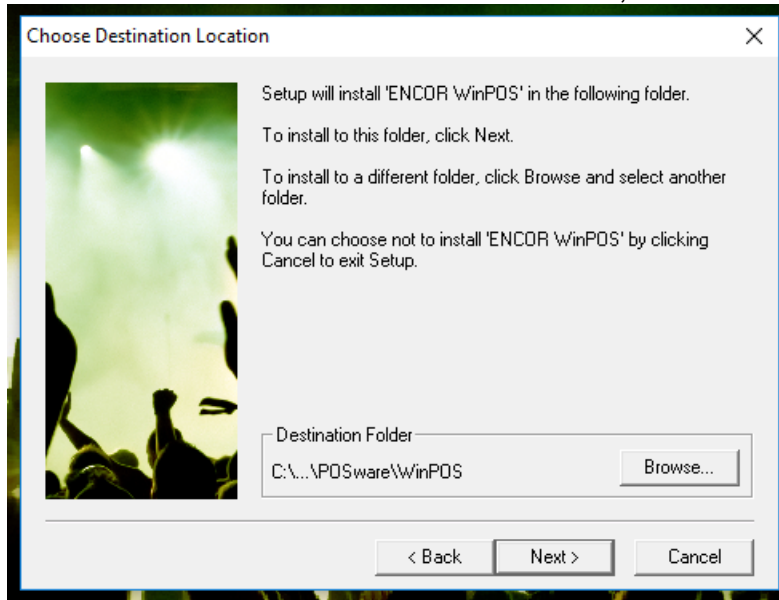
- At the Software License Agreement screen, click **YES** to accept the terms.



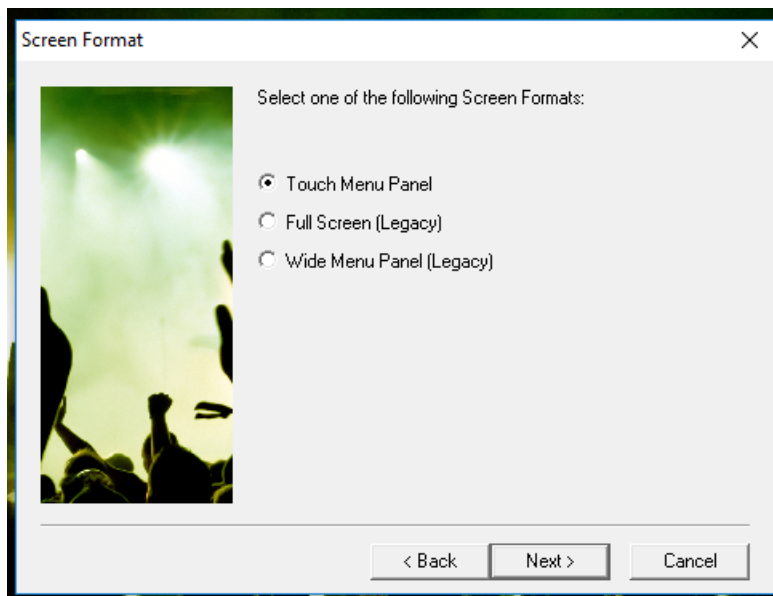
- At User Information screen, enter a **Name** and **Company**, and click **Next**.



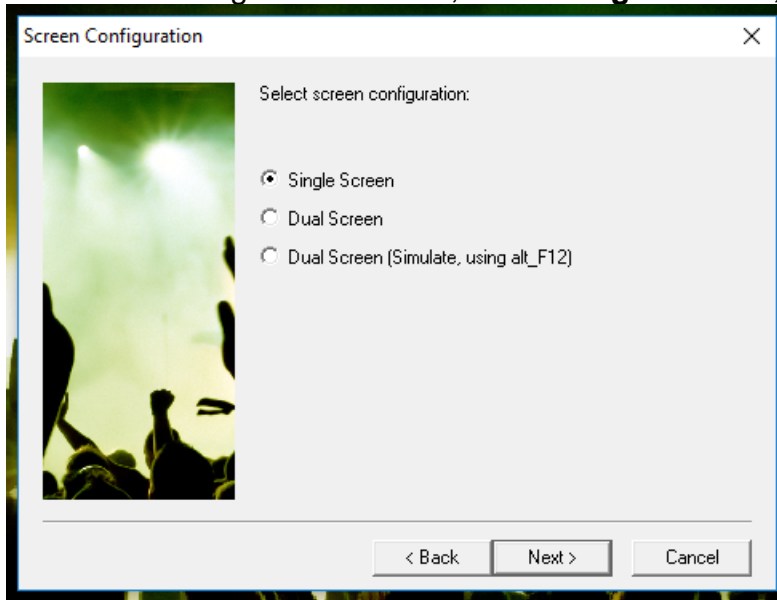
- At the Choose Destination Location section, click **Next**.



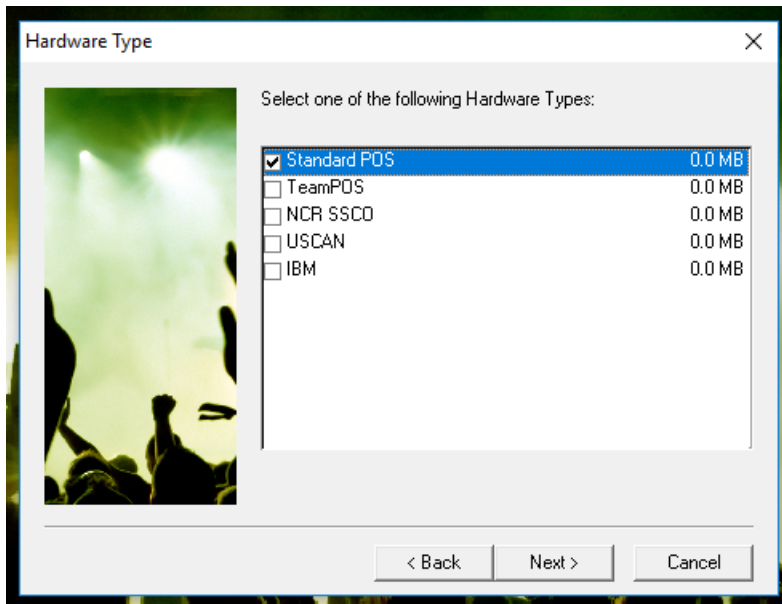
- At Screen Format screen, select **Touch Menu Panel**, and click **Next**.



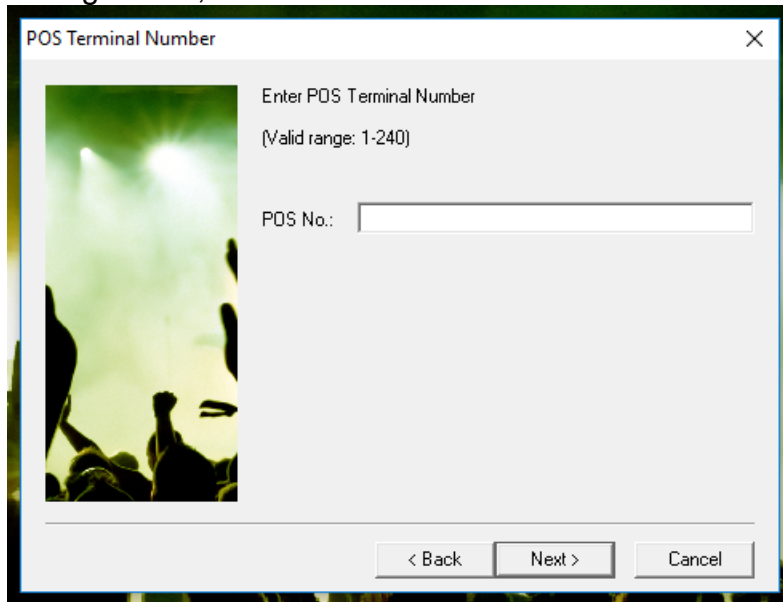
- At Screen Configuration screen, select **Single Screen**, and click **Next**.



- On the Hardware Type screen, select **Standard POS**, and click **Next**.



- On the POS Terminal Number screen, enter the **POS No** that was created earlier in POS Configuration, and click **Next**.



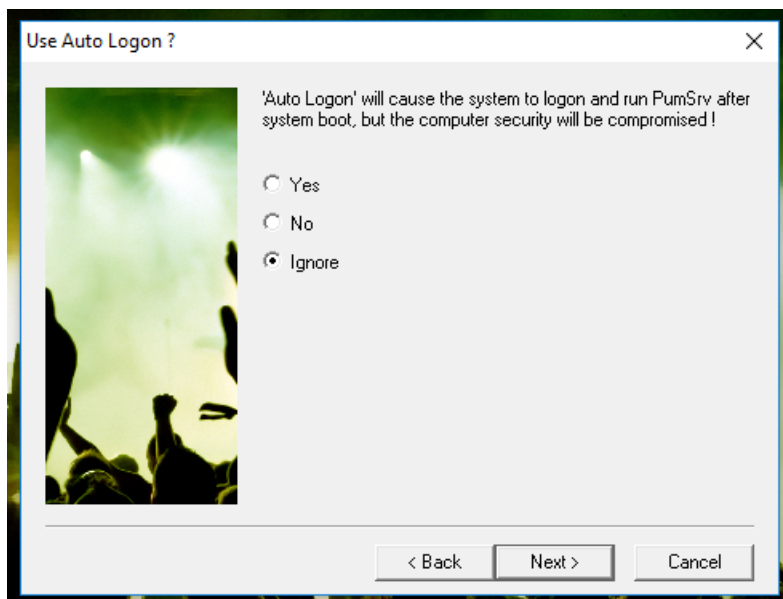
POS Terminal Number

Enter POS Terminal Number
(Valid range: 1-240)

POS No.:

< Back Next > Cancel

- At the **Use Auto Logon** screen, select **Ignore**, and click **Next**.



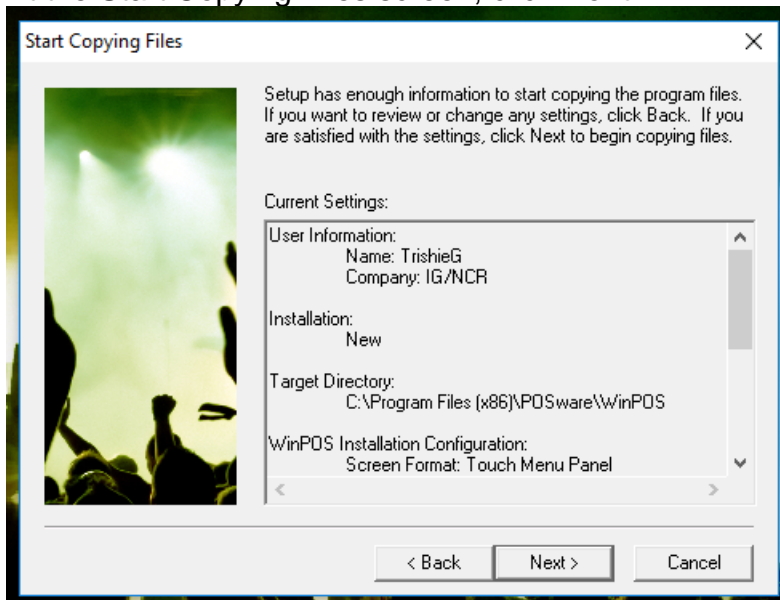
Use Auto Logon ?

'Auto Logon' will cause the system to logon and run PumSrv after system boot, but the computer security will be compromised !

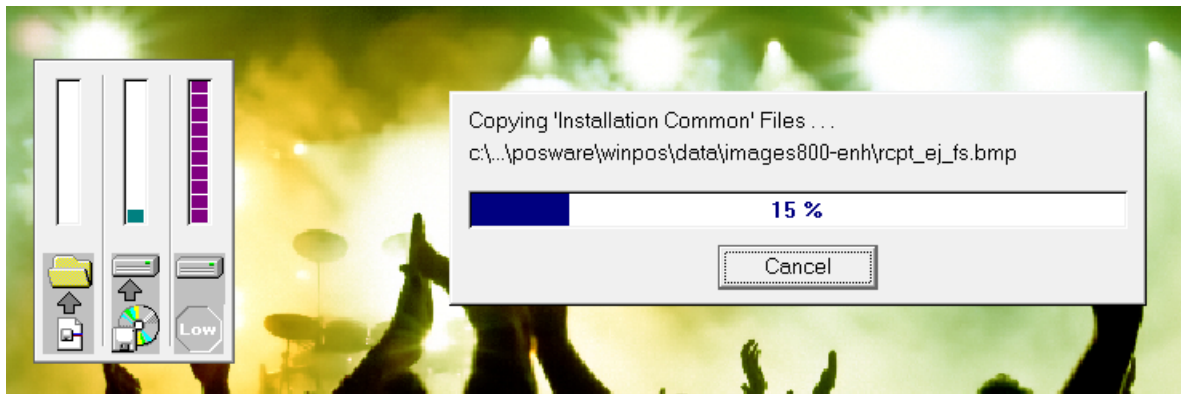
Yes
 No
 Ignore

< Back Next > Cancel

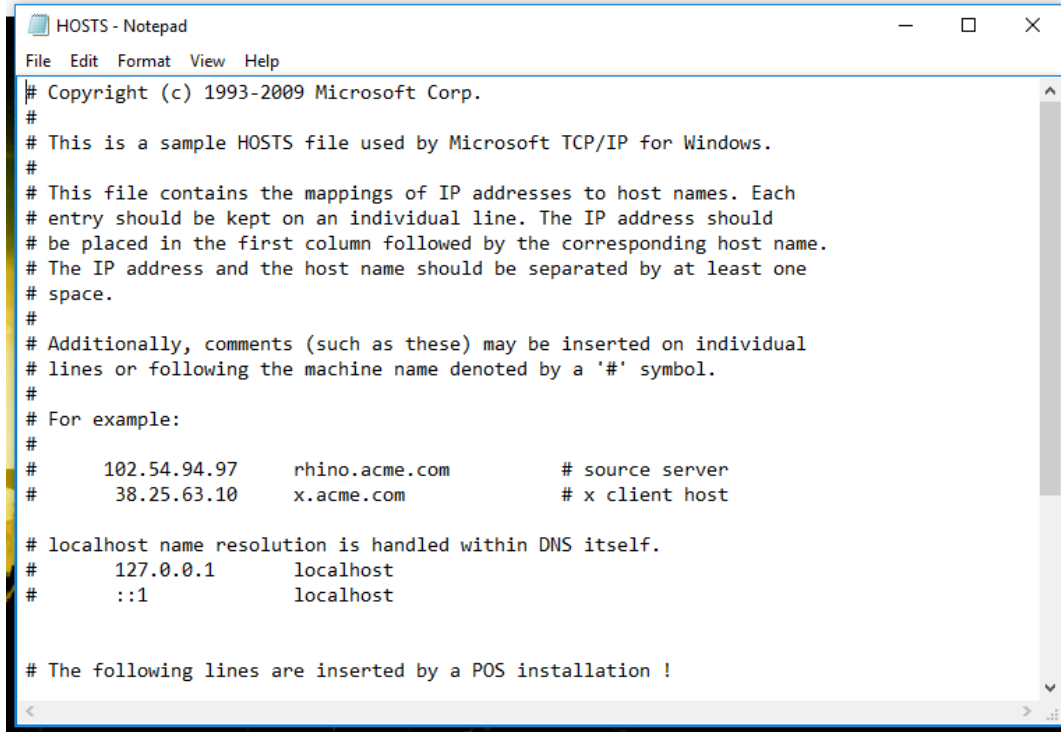
- At the Start Copying Files screen, click **Next**.



- The Installation will continue, copy the files, and setup the ENCOR POS.



- **HOSTS** text file (located in C:\Windows\System32\Drivers\etc) will open. In this file, enter the IP Address of MFS1, POS1, etc, then go to **File > Save**, and **close** the Notepad.

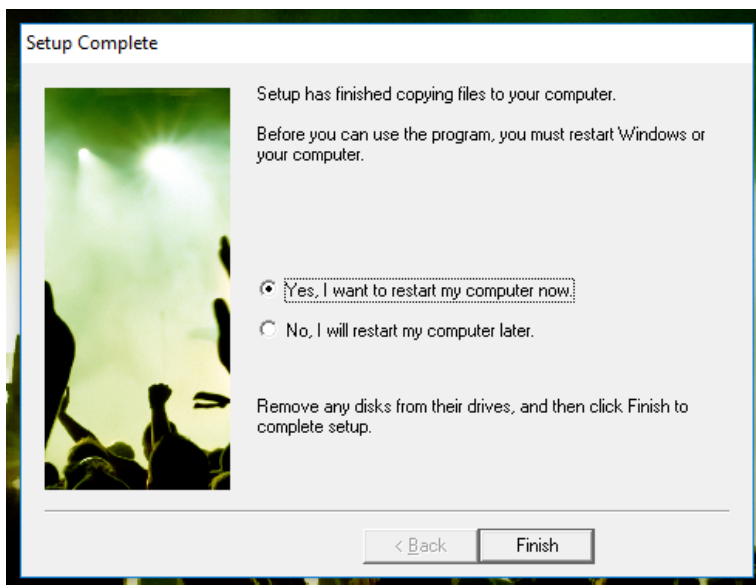


```

HOSTS - Notepad
File Edit Format View Help
# Copyright (c) 1993-2009 Microsoft Corp.
#
# This is a sample HOSTS file used by Microsoft TCP/IP for Windows.
#
# This file contains the mappings of IP addresses to host names. Each
# entry should be kept on an individual line. The IP address should
# be placed in the first column followed by the corresponding host name.
# The IP address and the host name should be separated by at least one
# space.
#
# Additionally, comments (such as these) may be inserted on individual
# lines or following the machine name denoted by a '#' symbol.
#
# For example:
#
#       102.54.94.97       rhino.acme.com          # source server
#       38.25.63.10      x.acme.com            # x client host
#
# localhost name resolution is handled within DNS itself.
#       127.0.0.1        localhost
#       ::1             localhost
#
# The following lines are inserted by a POS installation !

```

- At **Setup Complete** screen, click **Yes, I want to restart my computer now**, and click **Finish**.





© NCR Corporation, 2019

NCR endeavors to ensure that the information in this document is correct and fairly stated but does not accept liability for any error or omission.

The development of NCR products and services is continuous and published information may not be up to date. It is important to check the current position with NCR. This document is not part of a contract or license, save insofar as may be expressly agreed.

NCR Corporation
864 Spring Street
Atlanta, GA 30308

P/N 89000946
PIN 45002/092