



- *Epson OPOS Setup Procedures*
- *for V7 and V8*
-
-
-

Epson OPOS Setup Procedures for ISS45 V7 and V8

Date of Issue	Product Identification Number	Part Number	Brief Description
June 2005	No PIN	89000228	Initial Release

**©Copyright StoreNext Retail Technologies LLC 1995-2005
All rights reserved**

This publication is protected by federal copyright law into any human or computer language in any form or by any means, electronic, mechanical, magnetic or manual. No part of this publication may be copied or distributed, stored in a retrieval system, or translated or otherwise, or disclosed to third parties without the express written permission of StoreNext Retail Technologies LLC.

StoreNext Retail Technologies LLC makes no representation or warranties with respect to the contents hereof, and specifically disclaims any implied warranties of merchantability or fitness for a particular purpose. StoreNext Retail Technologies LLC further reserves the right to revise this publication and to make changes from time to time in the contents hereof without obligation of StoreNext Retail Technologies LLC to notify any person or organization of such revision or changes.

StoreNext Retail Technologies LLC has prepared this manual for use by users, authorized third parties and personnel of StoreNext Retail Technologies LLC as a guide to the proper installation, operation, customization and/or maintenance of StoreNext Retail Technologies LLC equipment and software. The drawings and specifications contained herein are the property of StoreNext Retail Technologies LLC.

Address comments and corrections to:

StoreNext Retail Technologies LLC
Software Program Director
6100 Tennyson Parkway
Suite 130
Plano, Texas 75024

TABLE of CONTENTS

0.	Document Control.....	b
0.1.	Distribution List — As per manuals	b
0.2.	Changes Forecast	b
0.3.	Change History	b
1.	RCS OPOS Common Control Objects Installation	1
1.1.	Installation of RCS OPOS Common Control Objects	1
2.	Epson OPOS Version 2.30E Installation	5
2.1.	Installation of Epson OPOS	5
2.2.	Epson USB Device Setup	11
2.2.1.	Epson USB Printer Device.....	11
2.2.2.	Epson USB MICR Device	14
2.2.3.	Epson USB Check Scanner Device (Currently in V8 only)	15
2.3.	Epson RS232 Device Setup	17
2.3.1.	Epson RS232 Printer Device	17
2.3.2.	Epson RS232 MICR Device	19
2.3.3.	Epson RS232 Check Scanner Device (Currently in V8 only)	21
3.	Configuration Settings for Epson OPOS in V7	23
3.1.	POST Configuration Setup	23
3.2.	ISS45 V7 WinPOS.ini setup	24
4.	Configuration Settings for Epson OPOS in V8	24
4.1.	POST Configuration Setup	24
4.2.	Check Imaging Setup (Currently in V8 only).....	26

0. Document Control

0.1. Distribution List — As per manuals

0.2. Changes Forecast

This document will be updated as new configurations and corrections are made available

0.3. Change History

Issue 1: This is the initial release of this document.

NOTE: OPOS is only required for USB connections on the TeamCombo board or when using Check Imaging in V8

1. RCS OPOS Common Control Objects Installation

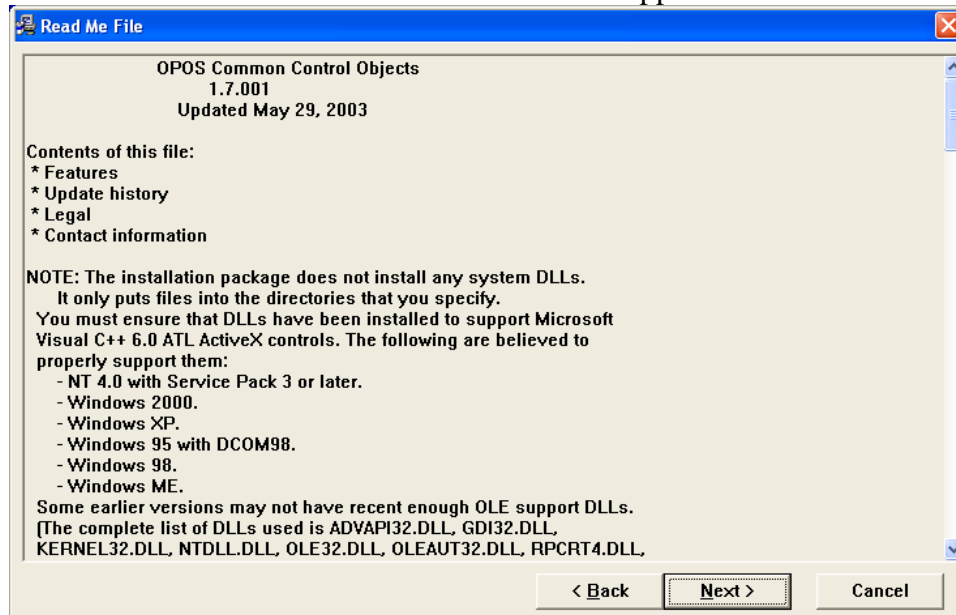
1.1. Installation of RCS OPOS Common Control Objects

1.1.1. The file can be found on the V7 and V8 distribution CD in the OPOS\RCS folder

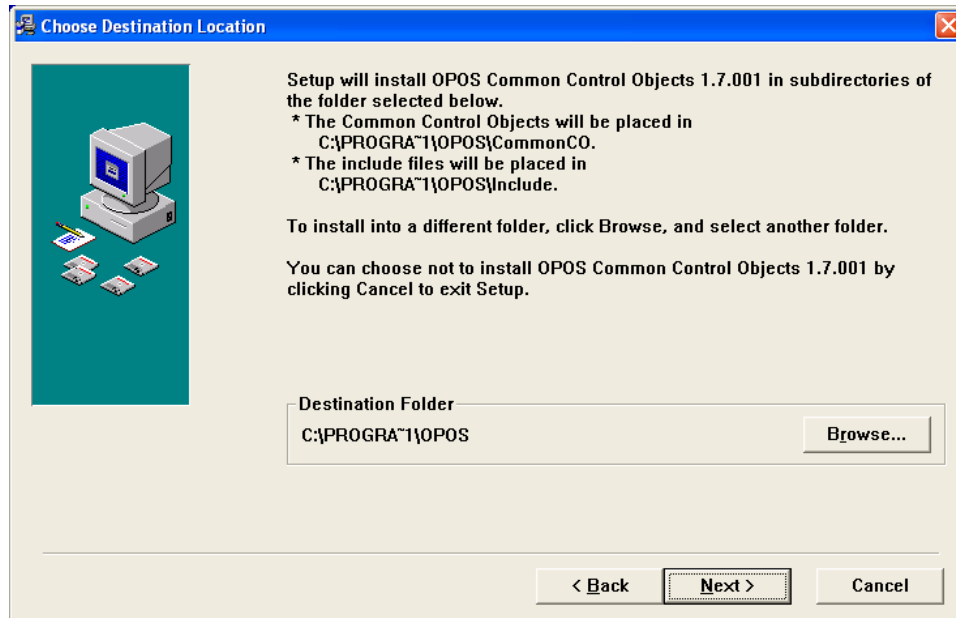
1.1.2. Run OposCCOs-1_7_001.EXE from the Start>Run Open: command line.
The Welcome screen appears



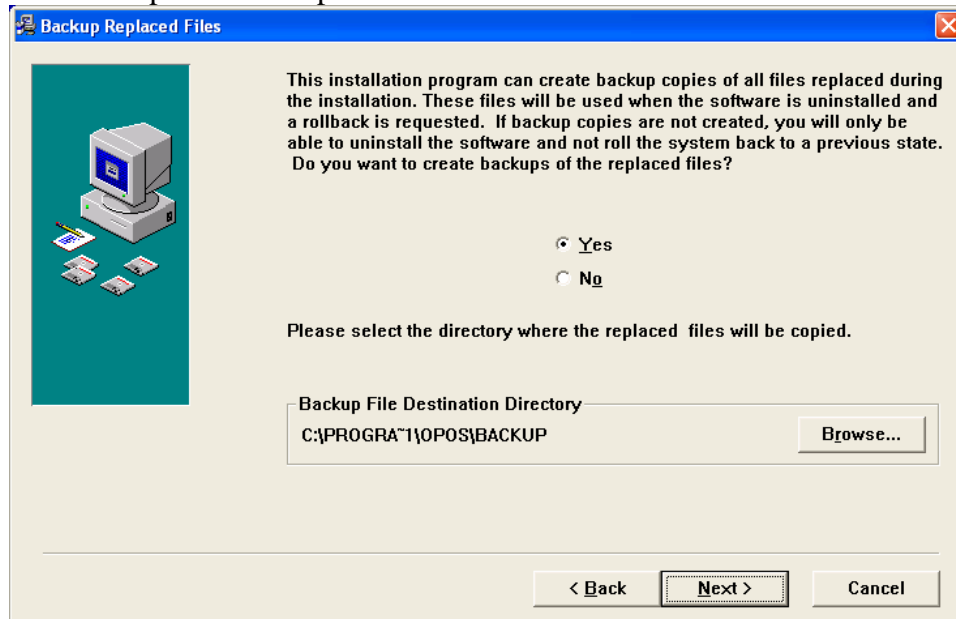
1.1.3. Click Next and the Read Me File screen appears



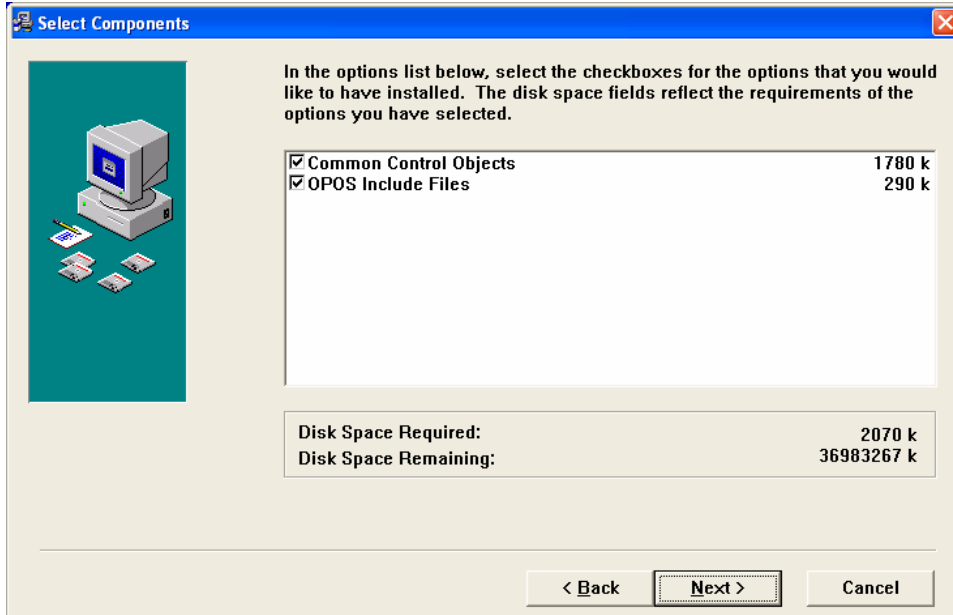
1.1.4. Click Next and the Choose Destination Location screen appears. Use the default and click Next



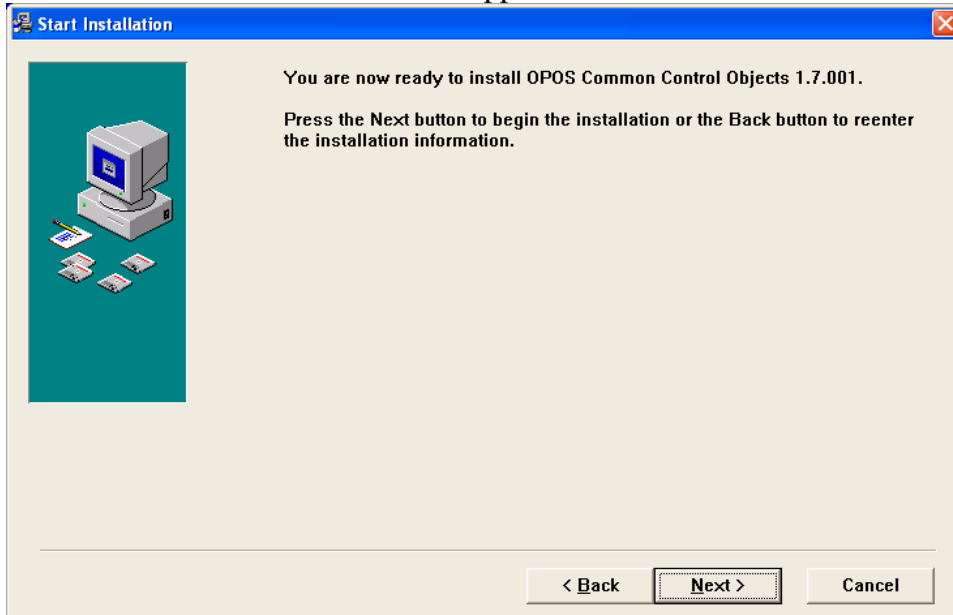
1.1.5. The Backup Replaced Files screen appears. Ensure Yes is selected and keep the default path then click Next.



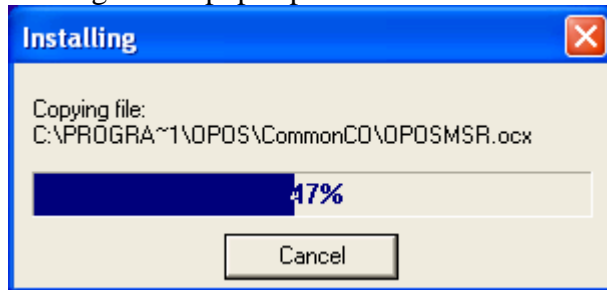
1.1.6. The Select Components screen appears. Ensure both options are selected and click Next.



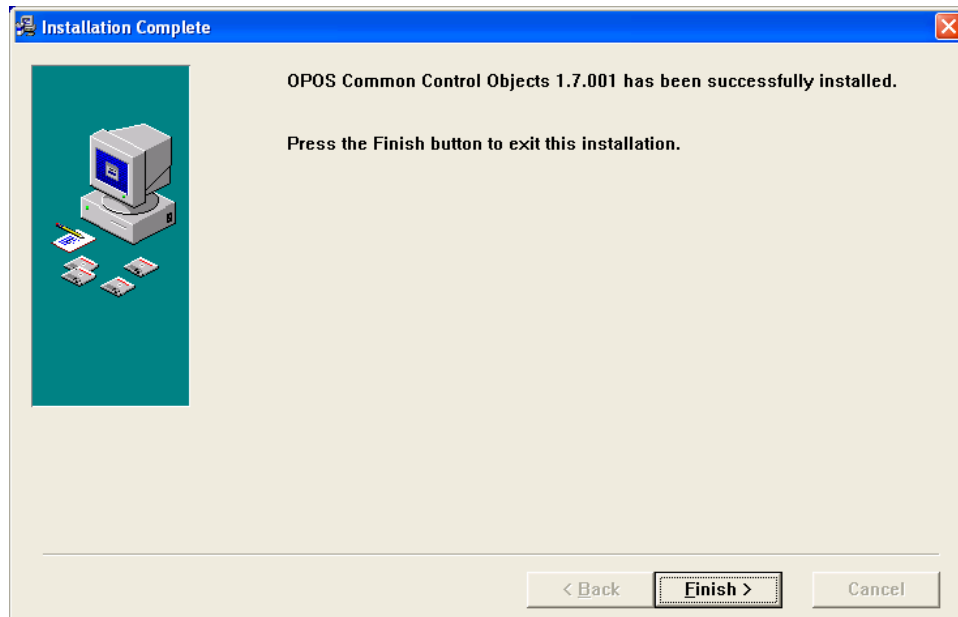
1.1.7. The Start Installation screen appears. Select Next.



1.1.8. The Installing screen pops up as shown below.



1.1.9. The Installation Complete screen is displayed. Click Finish and then restart the machine.



1.1.10. Installation is now complete.

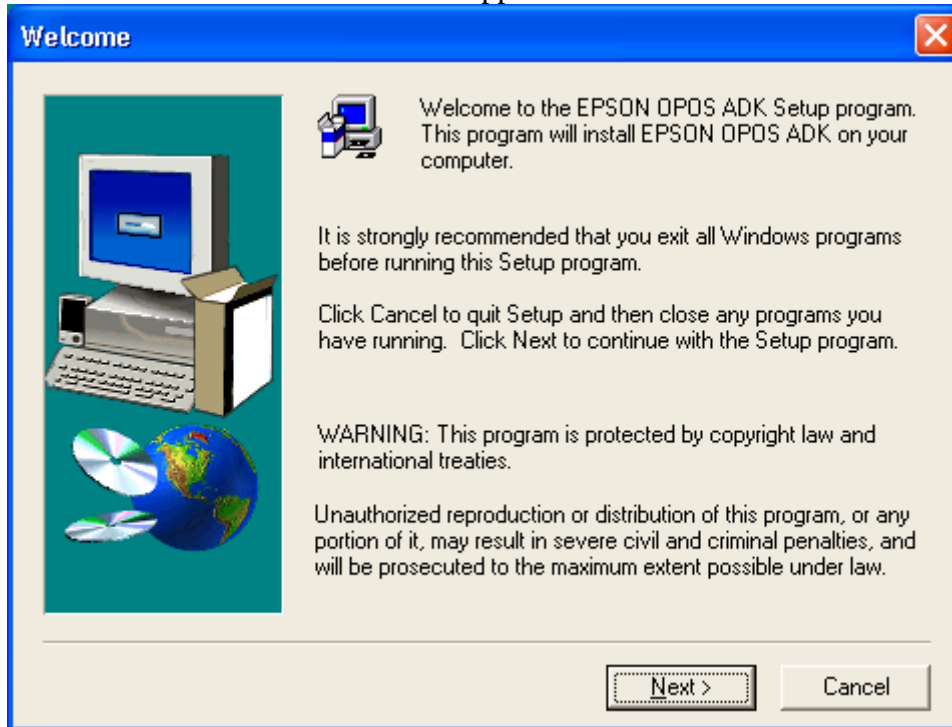
2. Epson OPOS Version 2.30E Installation

2.1. Installation of Epson OPOS

2.1.1. The file can be found on the V7 and V8 distribution CD in the OPOS\Epson folder

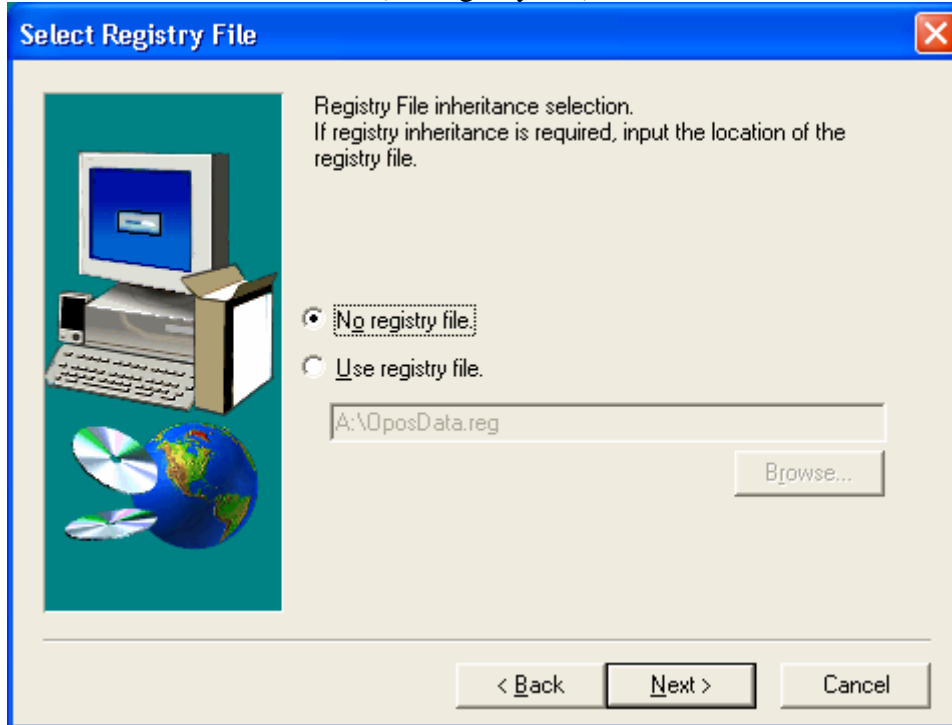
2.1.2. Run setup.exe

2.1.3. The Welcome screen below appears

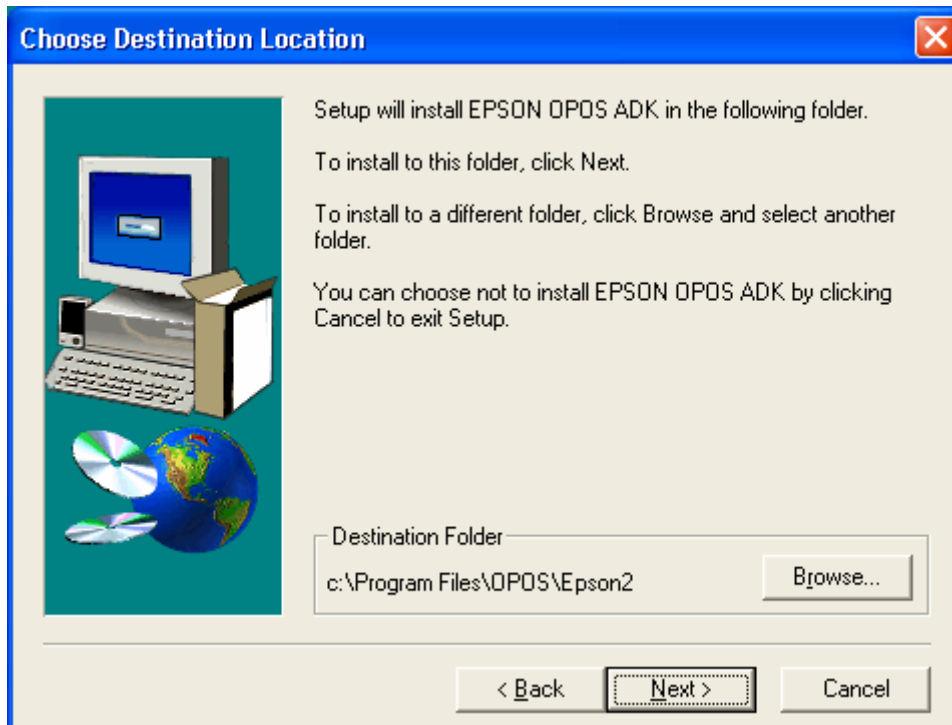


2.1.4. Click Next and the licensing screen appears.
Select the first bullet (I agree) and click Next

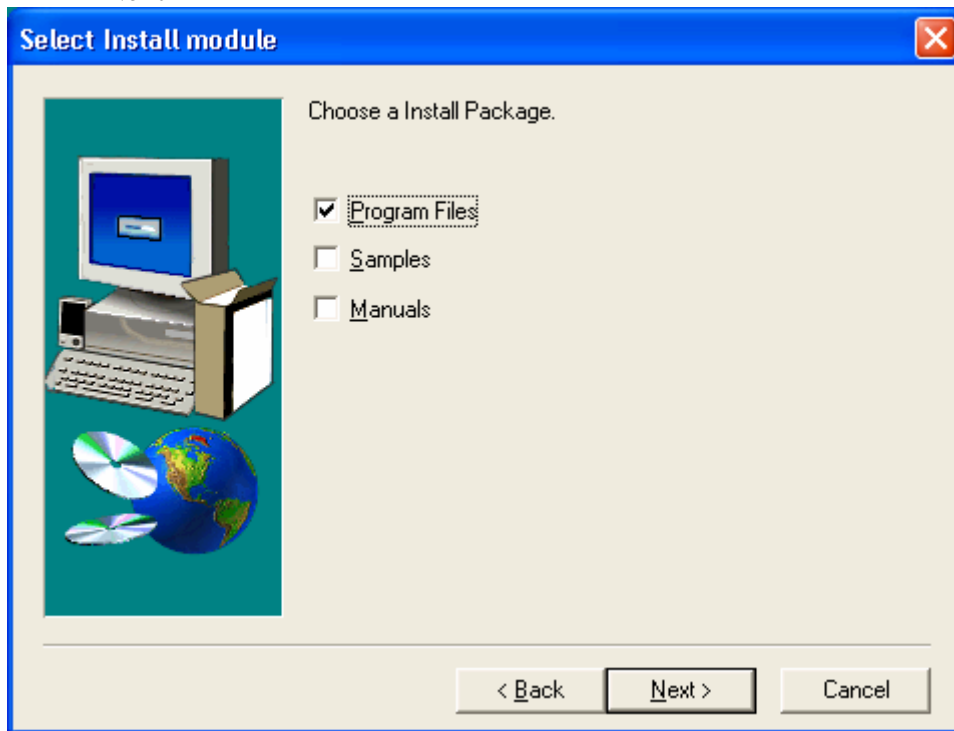
- 2.1.5. The following Select Registry File screen appears
Select the first bullet (No registry file) and click Next



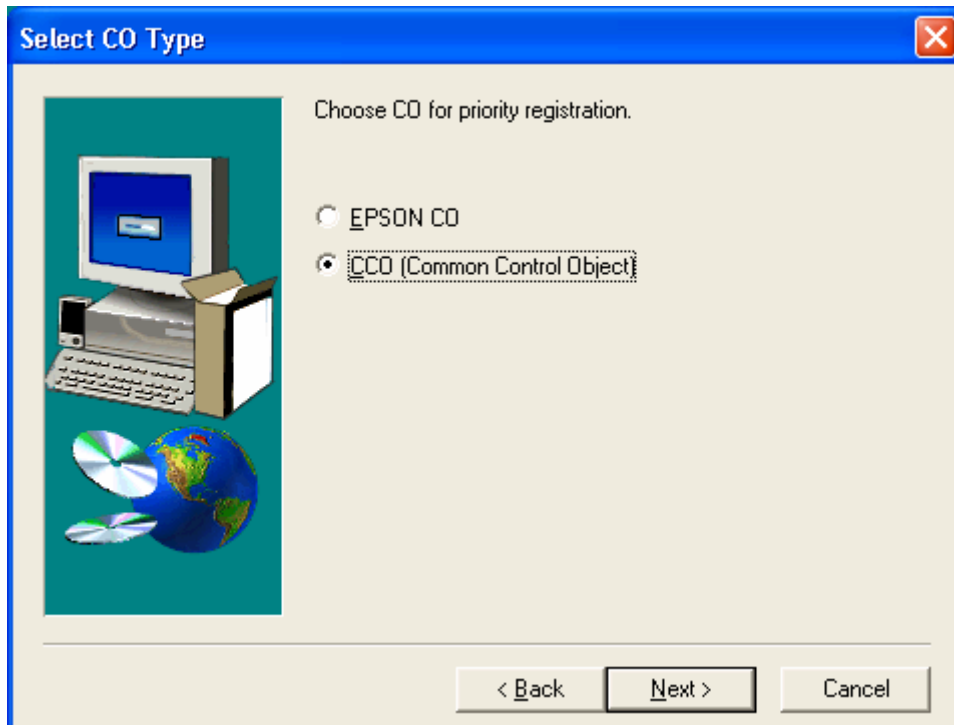
- 2.1.6. The User Information screen appears
Fill in the Name: and Company: information and click Next
- 2.1.7. Choose Destination Location screen appears
Use the default and click Next



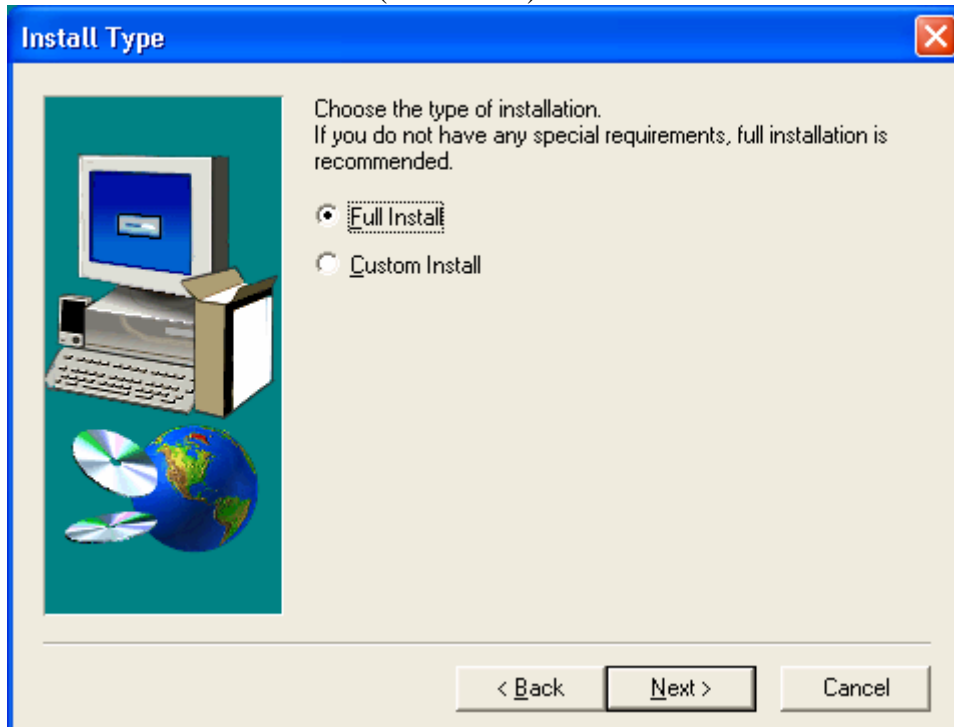
- 2.1.8. Select Install module screen appears
Select Program Files and any other items you wish to install and click
Next



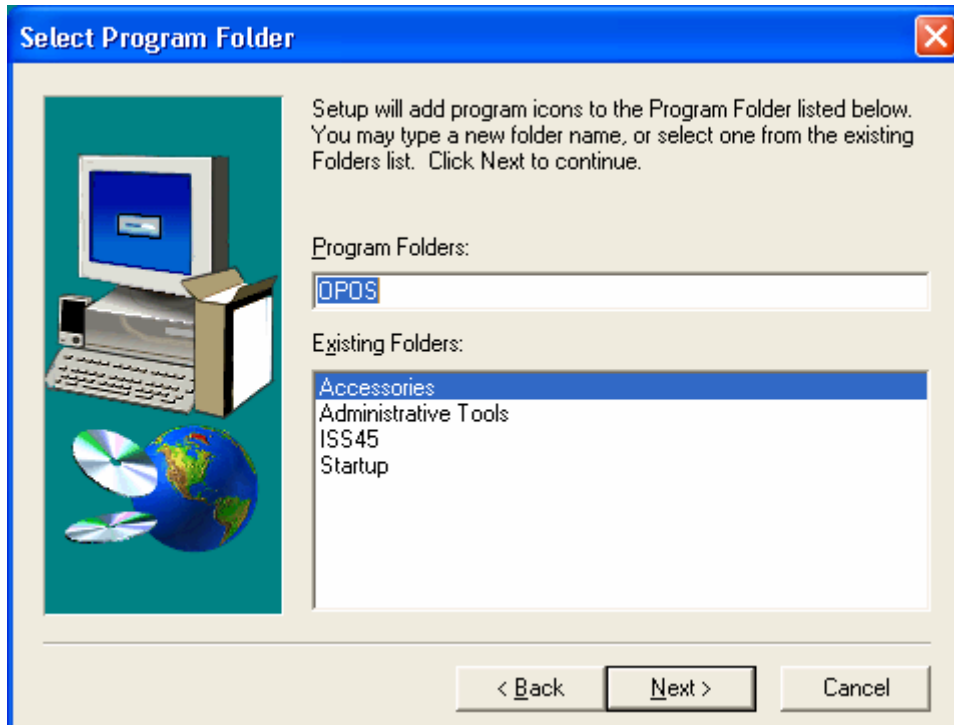
- 2.1.9. The following Select CO Type screen appears
Select the second bullet (CCO[Common Control Object])
Select Next



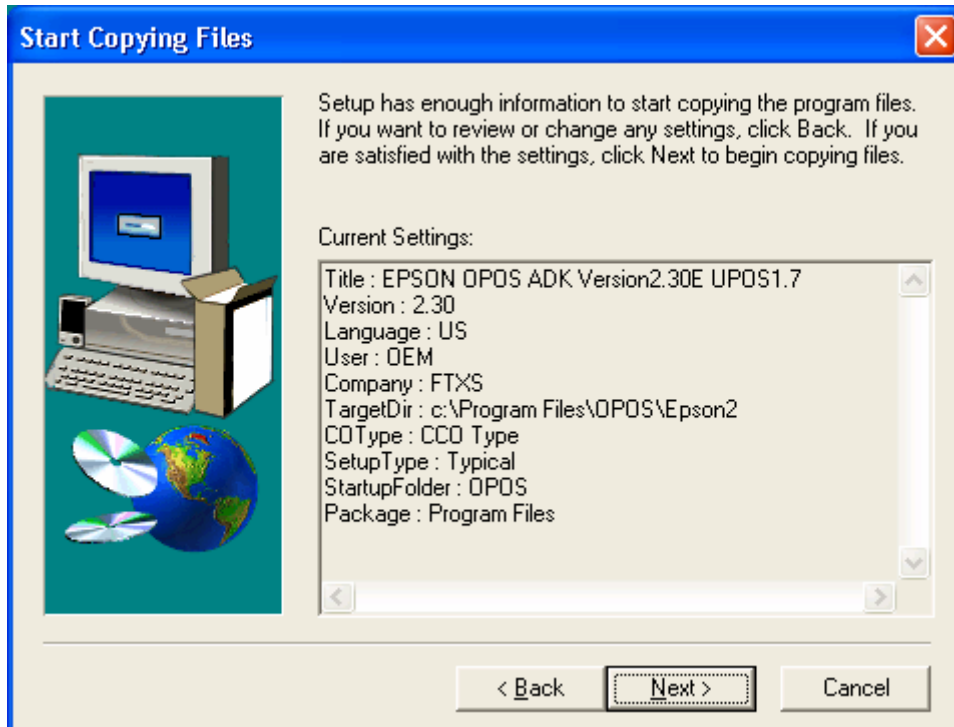
2.1.10. The Install Type screen appears
Select the first bullet (Full Install) and click Next



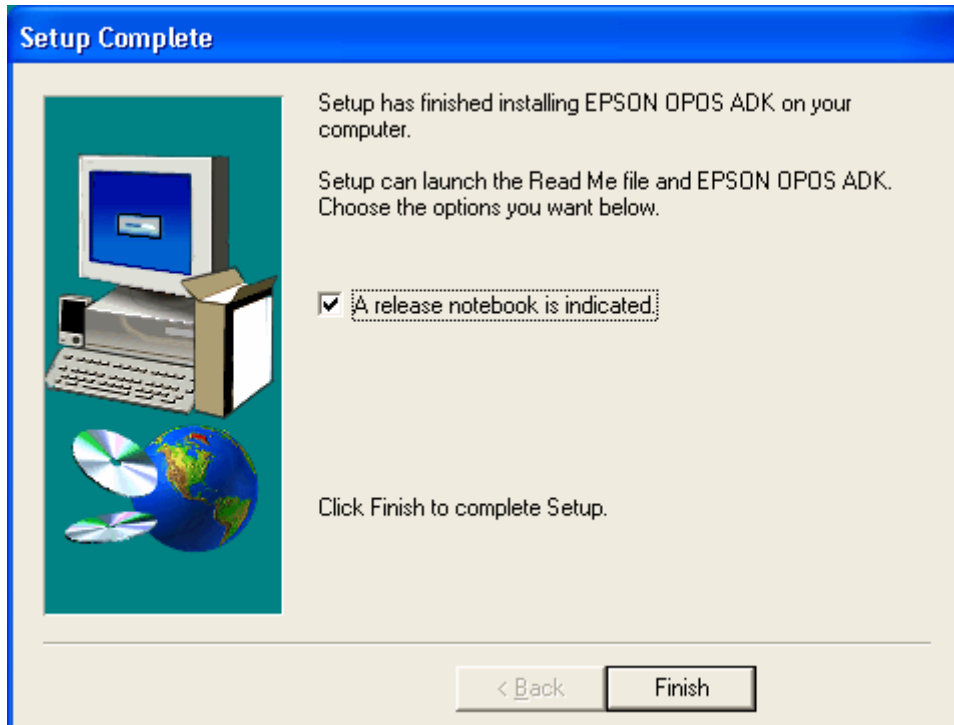
2.1.11. The Select Program Folder screen appears
Use the default and click Next



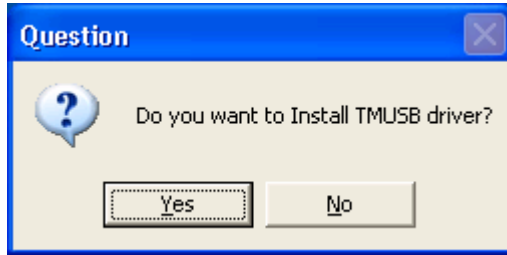
2.1.12. The Start Copying Files screen appears
Click on Next



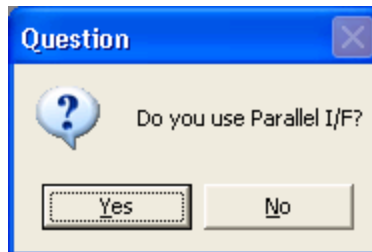
2.1.13. The Setup Complete screen appears
Click Finish



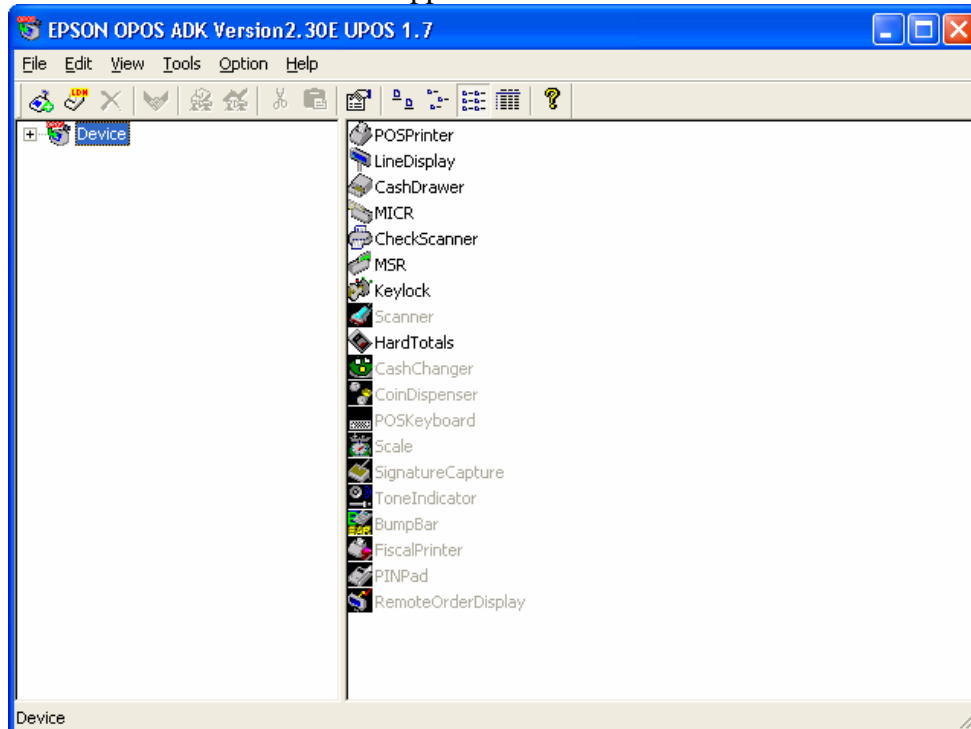
2.1.14. Question screen appears (Do you want to Install TMUSB Driver?)
Click Yes



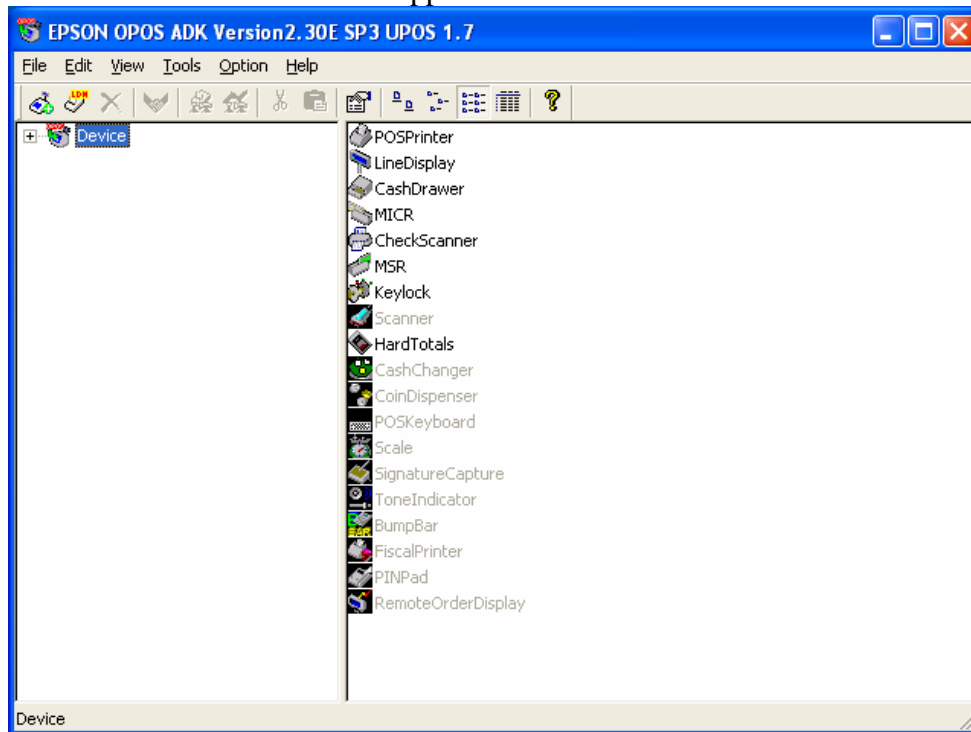
2.1.15. Question screen appears (Do you use Parallel I/F?)
Click No



2.1.16. OPOS Device Screen appears



- 2.1.17. Select (File | Exit) to close this screen
- 2.1.18. Restart the computer to discover the TMUSB driver for the USB connected Epson Printer
- 2.1.19. Apply Epson's Service Pack 3 (File located on the V7 and V8 distribution CD in the OPOS\Epson folder) selecting Yes to install the TMUSB driver at the end of the Service Pack installation
- 2.1.20. OPOS Device Screen appears



- 2.2. Epson USB Device Setup
 - 2.2.1. Epson USB Printer Device
 - 2.2.1.1. Add the Epson Printer, select the device name, select detailed model and add new LDN (See the following two screens)

Note: The LDN is user definable but must be the same name used in the ISS45 configuration for the OPOS device

This document chooses the name TM-H6000II for RS232 connected printer and TM-H6000IIU for USB connected printer

Add New Device [Select DeviceNameKey] ✖

Add New Device

Select <u>D</u> evice Name	Select detailed <u>m</u> odel.
<input type="text" value="TM-H6000II"/>	<input type="text" value="TM-H6000IIU"/>
<input type="checkbox"/> Display Ver1.xx	<input checked="" type="checkbox"/> Display Ver2.xx
Used Port	
<input type="text" value="USB"/>	

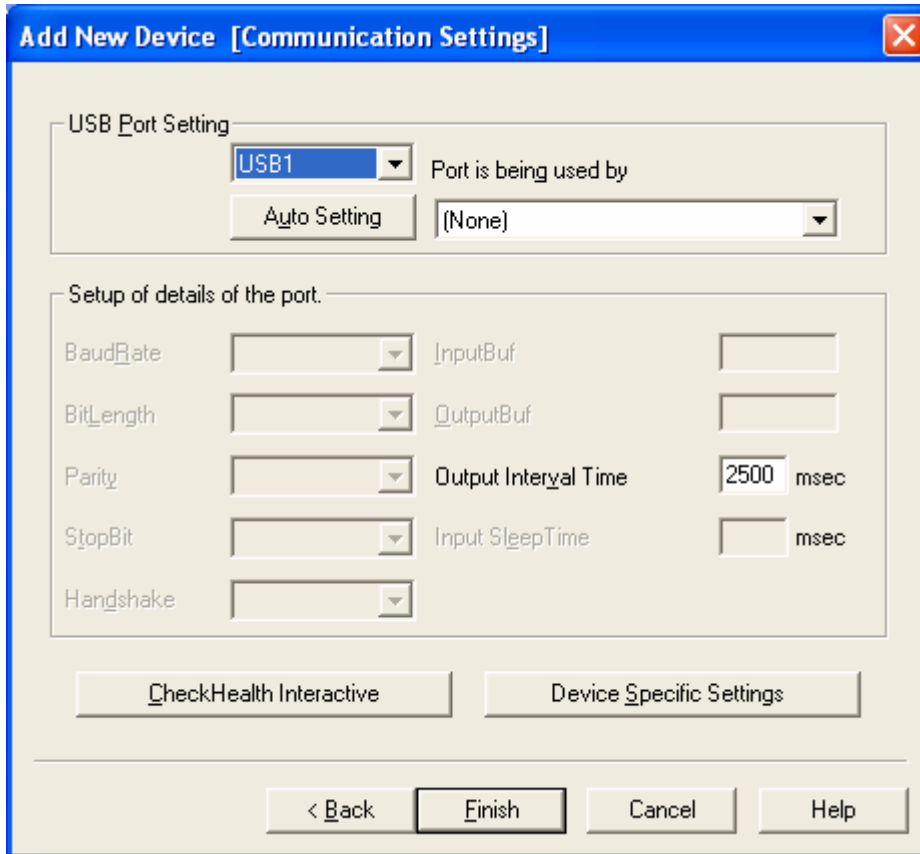
Device Description

INF File Name.

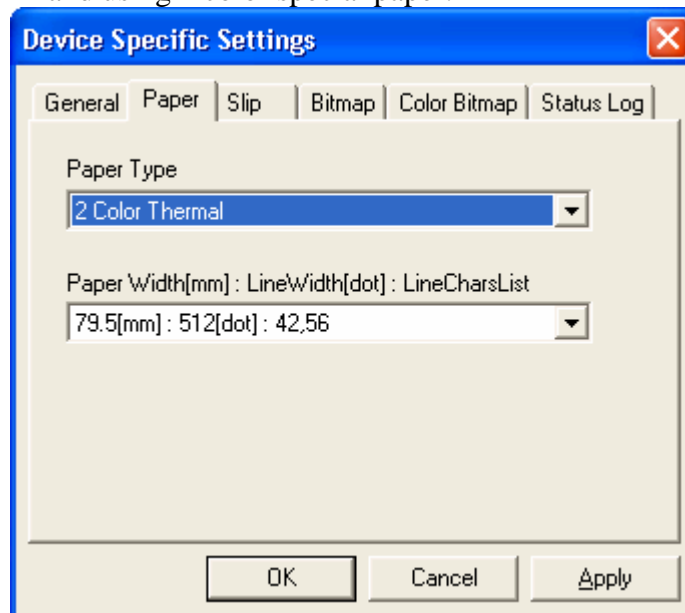
Add New LDN

Set up a logical device name if necessary.

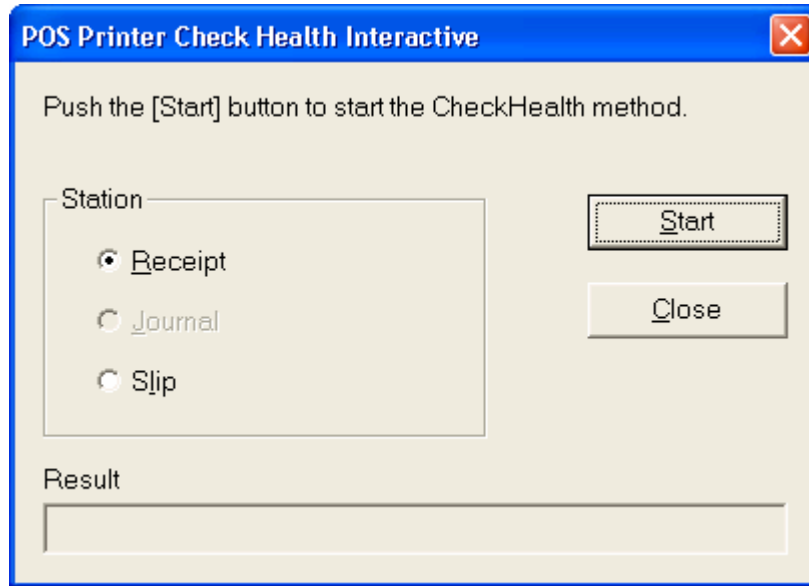
* A logical device name isn't indispensable.
A logical device name isn't set up in the case as the blank.
And, a logical device name can be set up even later.



2.2.1.2. The following setup should be done if you are using a 2 color printer and using 2 color special paper.



2.2.1.3. Run Health Check Interactive to send the change to the printer



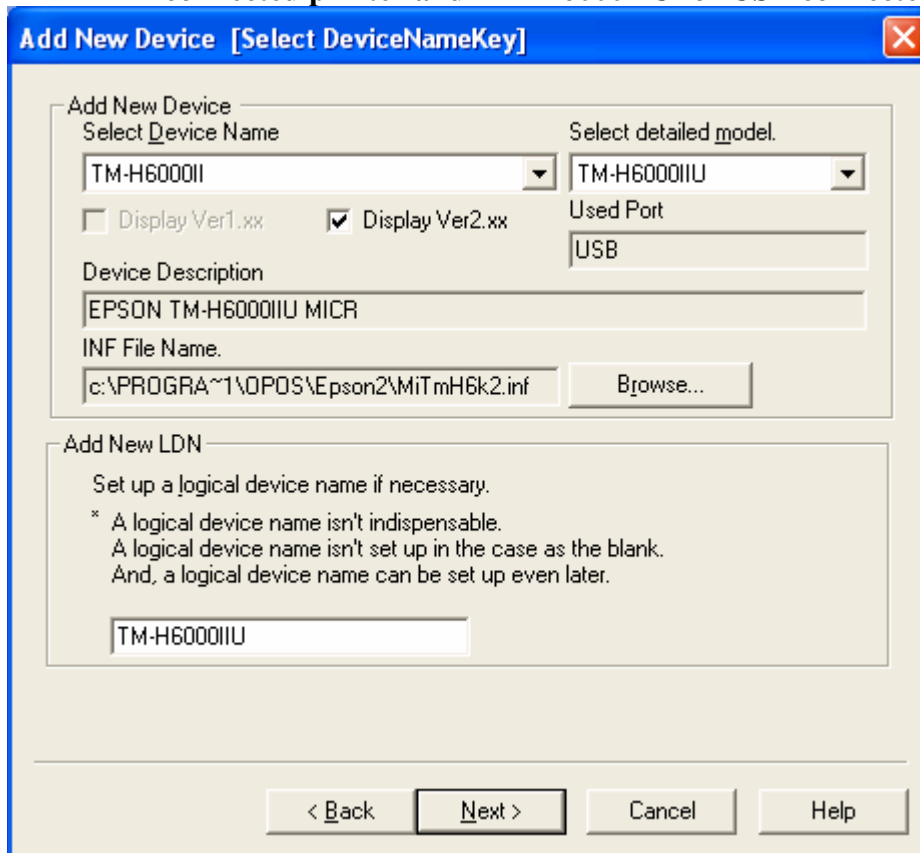
2.2.2. Epson USB MICR Device

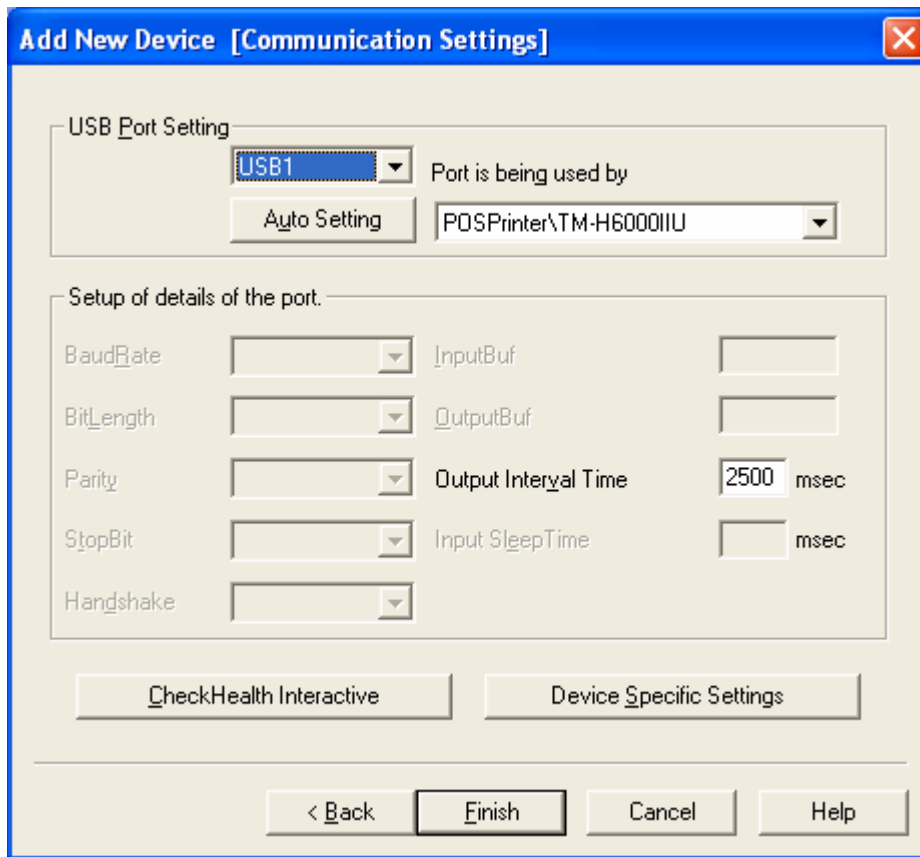
- 2.2.2.1. Add the Epson MICR, select the device name, select detailed model and add new LDN (See the following two screens)

Note: The LDN is user definable but must be the same name used in the ISS45 configuration for the OPOS device

This document chooses the name TM-H6000II for RS232

connected printer and TM-H6000IIU for USB connected printer





2.2.3. Epson USB Check Scanner Device (Currently in V8 only)

2.2.3.1. Add the Epson Check Scanner, select the device name, select detailed model and add new LDN (See the following two screens)

**Note: The LDN is user definable but must be the same name used in the ISS45 configuration for the OPOS device
This document chooses the name TM-H6000II for RS232 connected printer and TM-H6000IIU for USB connected printer**

Add New Device [Select DeviceNameKey] ✖

Add New Device

Select Device Name: Select detailed model:

Display Ver1.xx Display Ver2.xx Used Port:

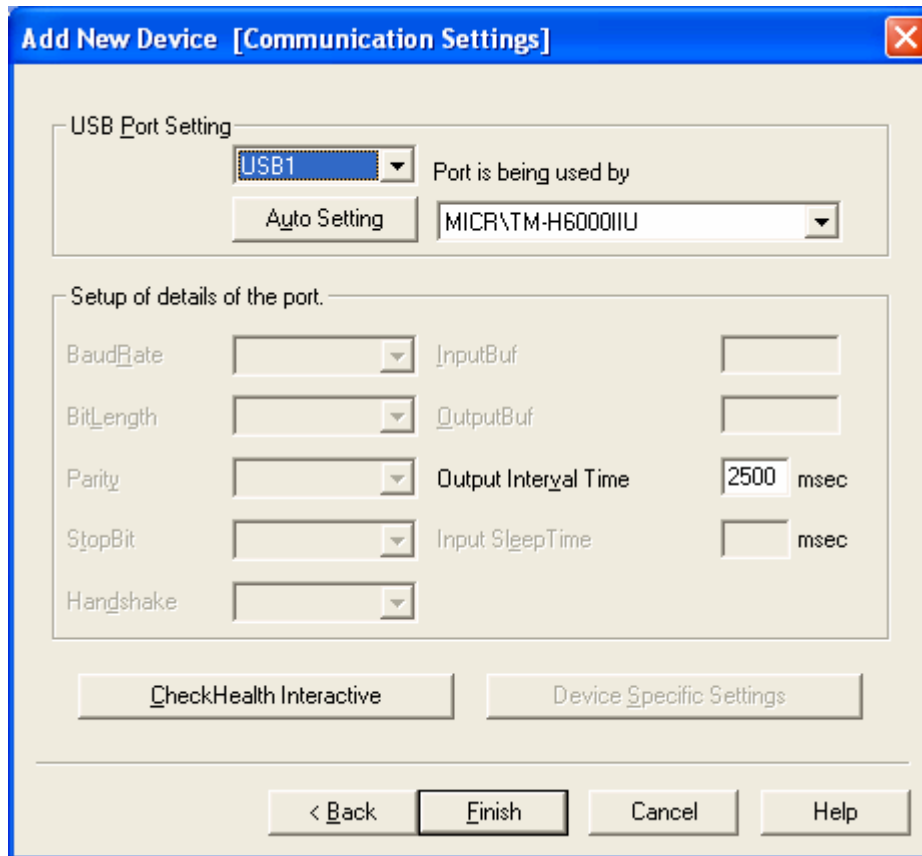
Device Description:

INF File Name:

Add New LDN

Set up a logical device name if necessary.

* A logical device name isn't indispensable.
A logical device name isn't set up in the case as the blank.
And, a logical device name can be set up even later.



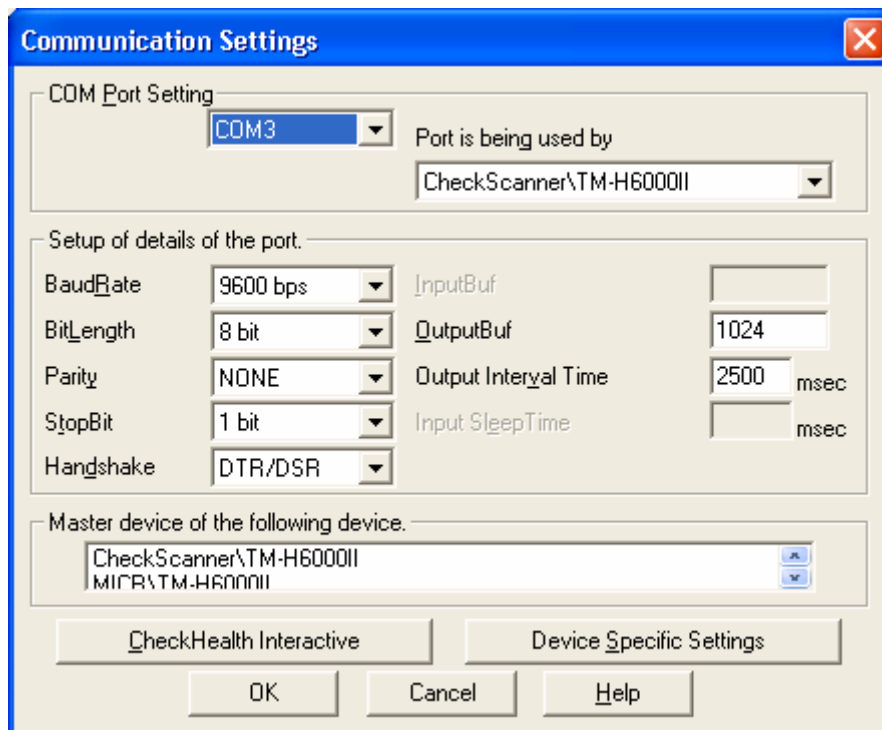
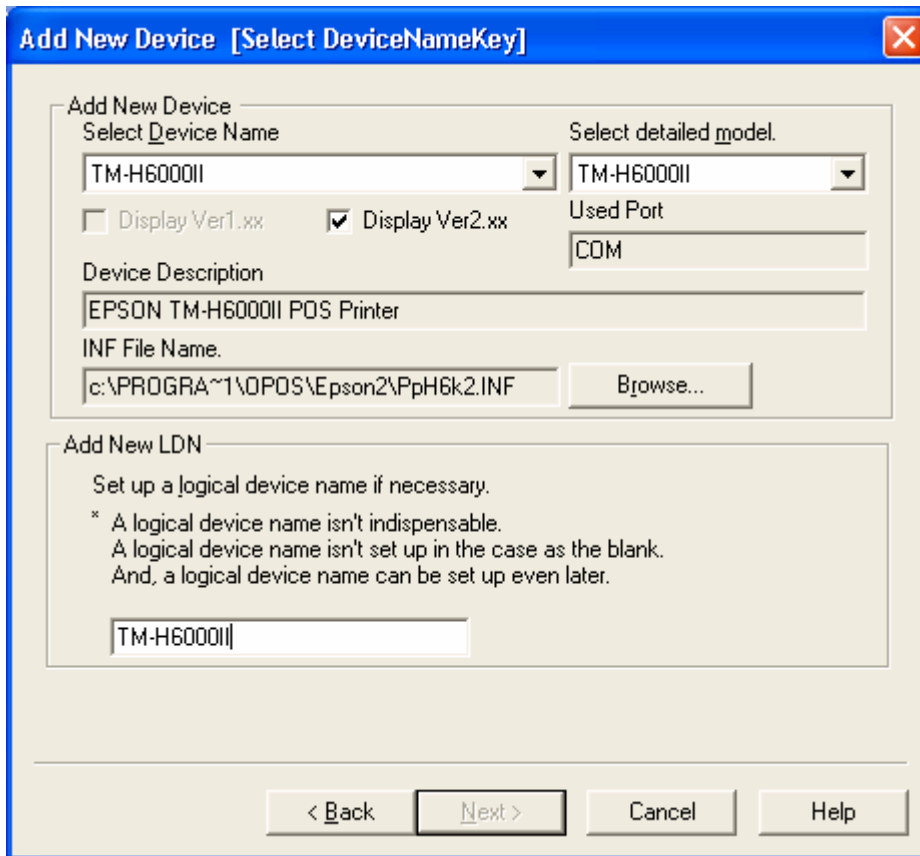
2.3. Epson RS232 Device Setup

2.3.1. Epson RS232 Printer Device

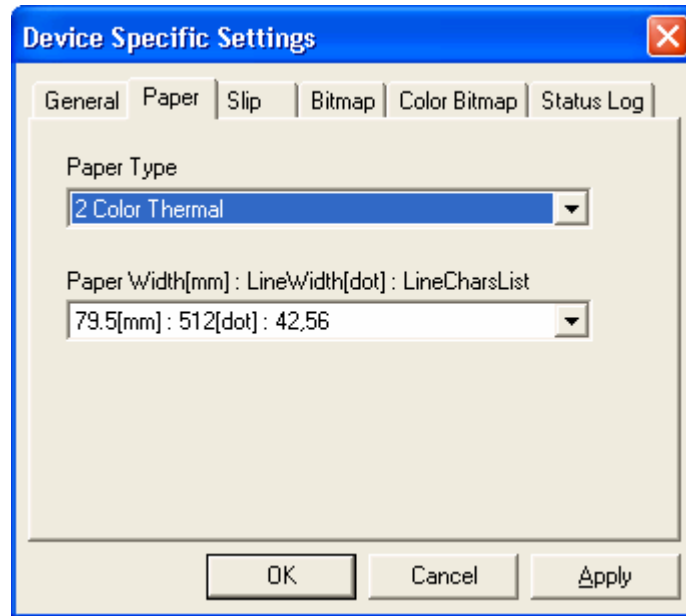
2.3.1.1. Add the Epson Printer, select the device name, select detailed model and add new LDN (See the following two screens)

Note: The LDN is user definable but must be the same name used in the ISS45 configuration for the OPOS device

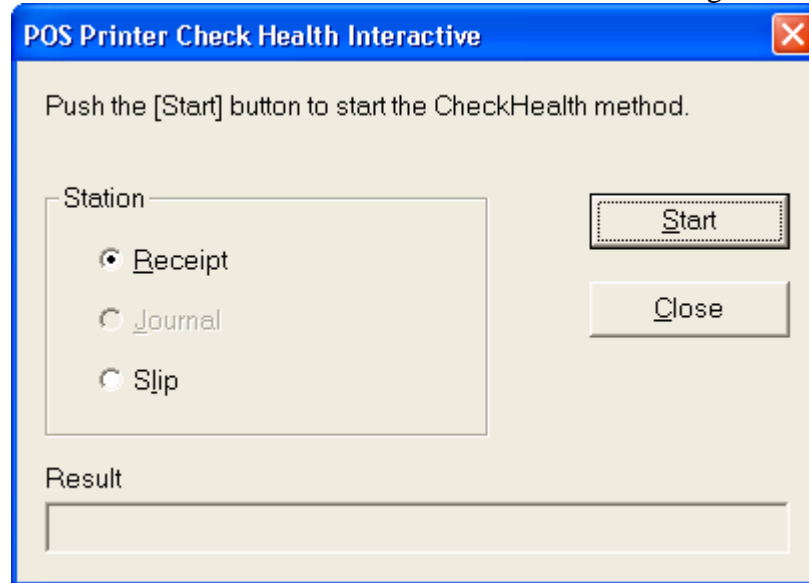
This document chooses the name TM-H6000II for RS232 connected printer and TM-H6000IIU for USB connected printer



2.3.1.2. The following setup should be done if you are using a 2 color printer and using 2 color special paper.



2.3.1.3. Run Health Check Interactive to send the change to the printer



2.3.2. Epson RS232 MICR Device

2.3.2.1. Add the Epson MICR, select the device name, select detailed model and add new LDN (See the following two screens)

Note: The LDN is user definable but must be the same name used in the ISS45 configuration for the OPOS device

This document chooses the name TM-H6000II for RS232 connected printer and TM-H6000IIU for USB connected printer

Add New Device [Select DeviceNameKey] ✖

Add New Device

Select <u>D</u> evice Name	Select detailed <u>m</u> odel.
<input type="text" value="TM-H6000II"/>	<input type="text" value="TM-H6000II"/>
<input type="checkbox"/> Display Ver1.xx	<input checked="" type="checkbox"/> Display Ver2.xx
Used Port	
<input type="text" value="COM"/>	

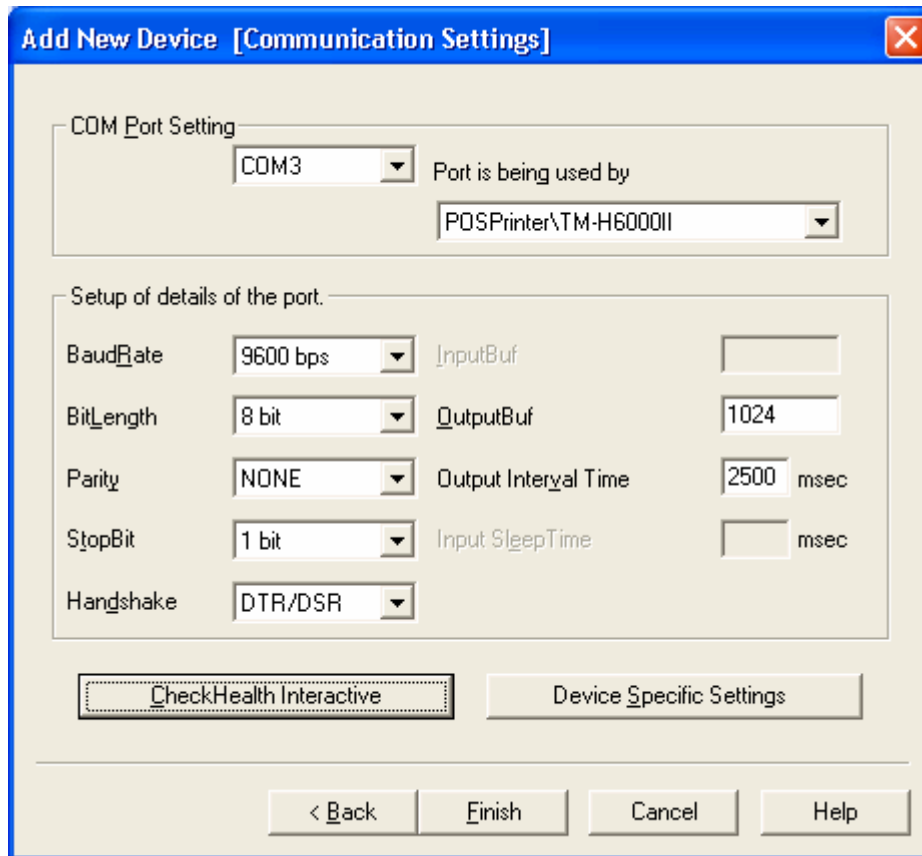
Device Description

INF File Name.

Add New LDN

Set up a logical device name if necessary.

* A logical device name isn't indispensable.
A logical device name isn't set up in the case as the blank.
And, a logical device name can be set up even later.



2.3.3. Epson RS232 Check Scanner Device (Currently in V8 only)

2.3.3.1. Add the Epson Check Scanner, select the device name, select detailed model and add new LDN (See the following two screens)

**Note: The LDN is user definable but must be the same name used in the ISS45 configuration for the OPOS device
This document chooses the name TM-H6000II for RS232 connected printer and TM-H6000IIU for USB connected printer**

Add New Device [Select DeviceNameKey] ✖

Add New Device

Select <u>D</u> evice Name	Select detailed <u>m</u> odel.
<input type="text" value="TM-H6000II"/>	<input type="text" value="TM-H6000II"/>
<input type="checkbox"/> Display Ver1.xx	<input checked="" type="checkbox"/> Display Ver2.xx
Used Port	
<input type="text" value="COM"/>	

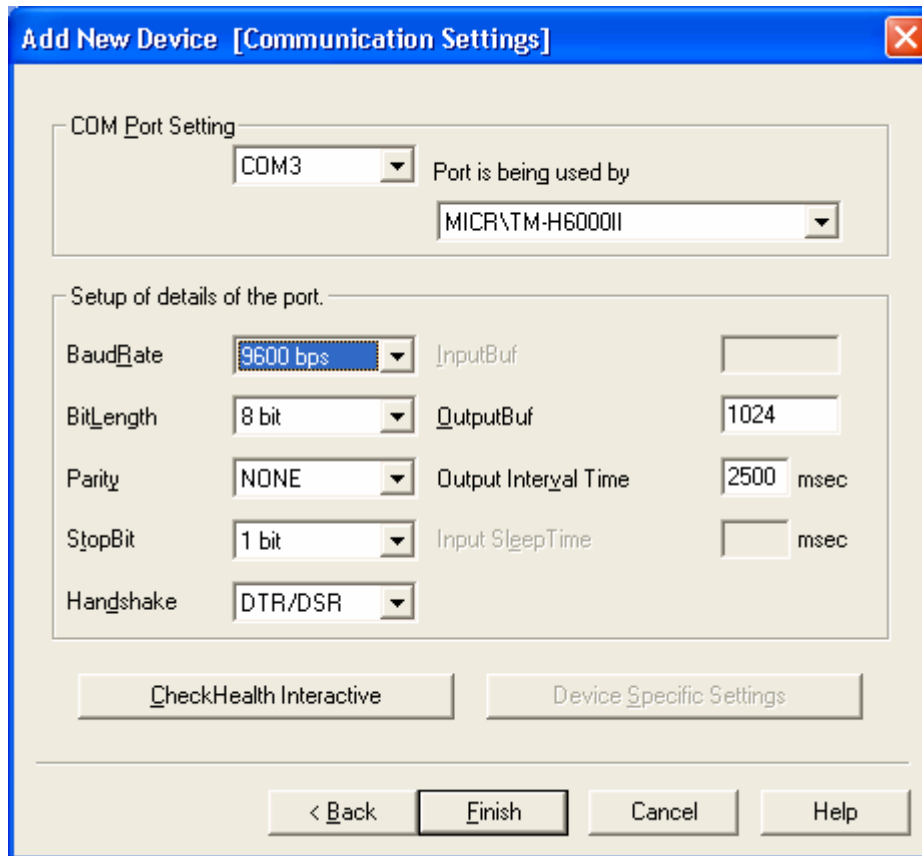
Device Description

INF File Name.

Add New LDN

Set up a logical device name if necessary.

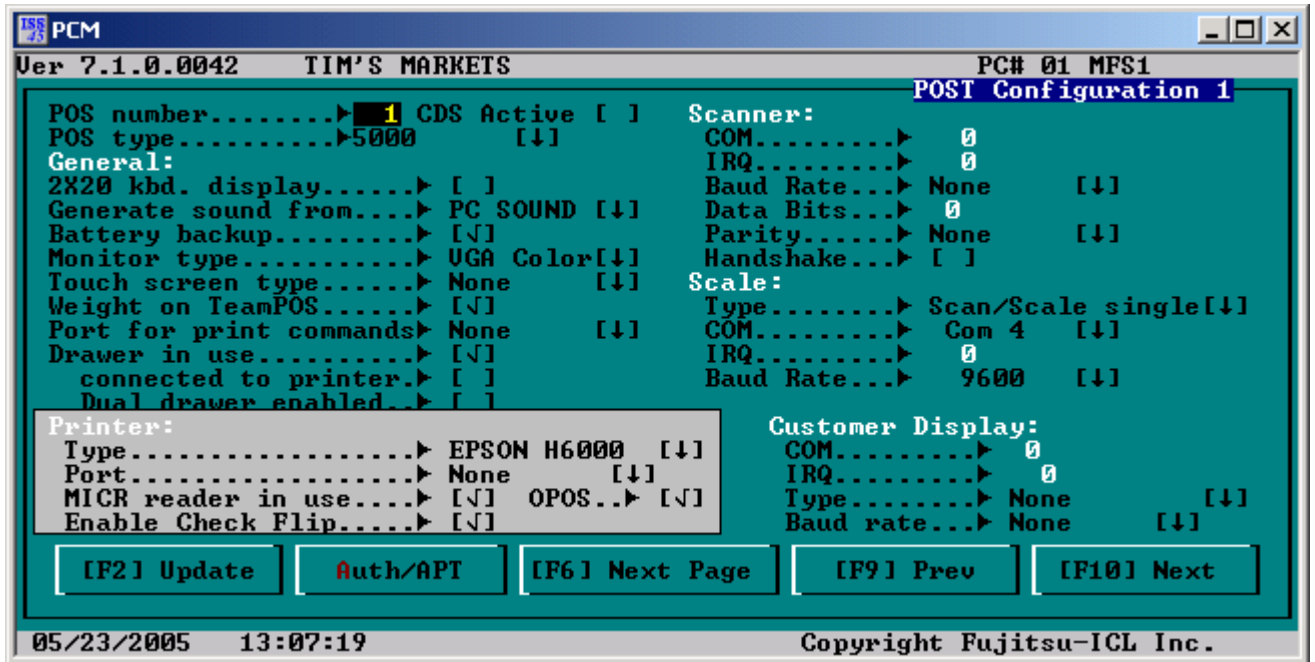
* A logical device name isn't indispensable.
A logical device name isn't set up in the case as the blank.
And, a logical device name can be set up even later.



3. Configuration Settings for Epson OPOS in V7

3.1. POST Configuration Setup

- 3.1.1. On POST Configuration Screen 1, Select None for Port and check the box for OPOS



3.2. ISS45 V7 WinPOS.ini setup

- 3.2.1. Add the following lines in the WinPOS.ini file for the OPOS printer and OPOS MICR

Note: The OPOS name is user definable but must be the same name used in LDN setup earlier for the OPOS device

This document uses the name TM-H6000II for RS232 connected printer and TM-H6000IIU for USB connected printer

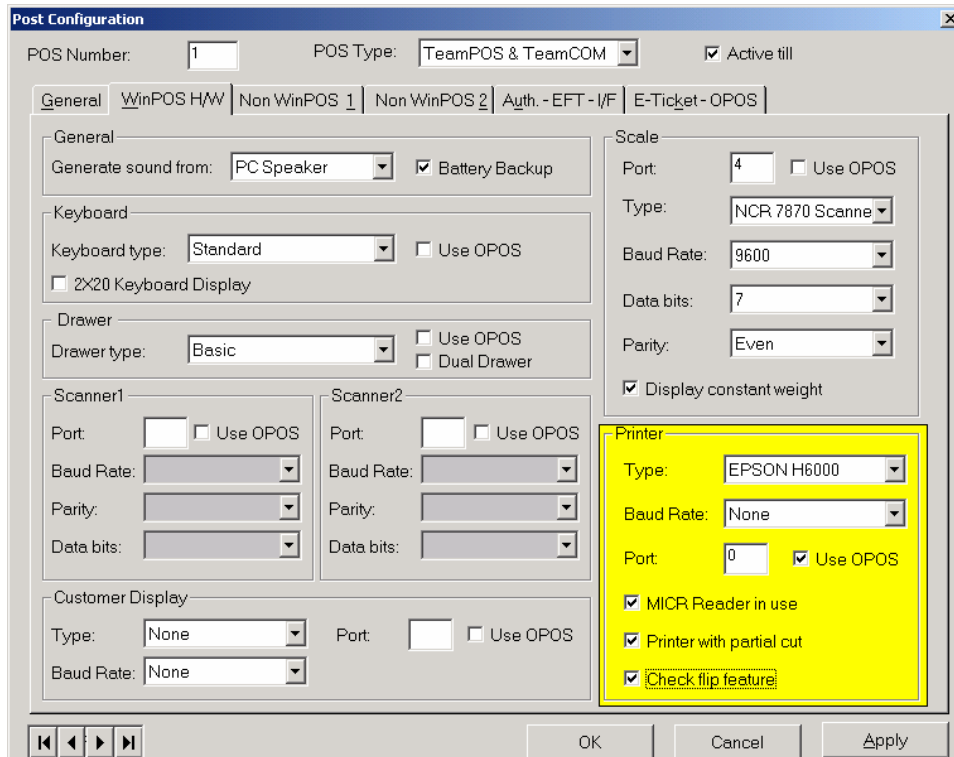
- 3.2.1.1. DefaultPrinterName=TM-H6000IIU
- 3.2.1.2. OposMicr=Yes
- 3.2.1.3. DefaultMicrName=TM-H6000IIU

4. Configuration Settings for Epson OPOS in V8

NOTE: There is no setup required in the WinPOS.ini file for V8

4.1. POST Configuration Setup

- 4.1.1. WinPOS H/W Tab (See the following screen)
 - 4.1.1.1. Printer Type: Epson H6000
 - 4.1.1.2. Baud Rate: None
 - 4.1.1.3. Port: 0
 - 4.1.1.4. Box checked for Use OPOS
 - 4.1.1.5. Box checked for MICR Reader in use



4.1.2. E-Ticket –OPOS (See the following screen)

Note: The OPOS name is user definable but must be the same name used in LDN setup earlier for the OPOS device

This document uses the name TM-H6000II for RS232 connected printer and TM-H6000IIU for USB connected printer

- 4.1.2.1. Fill in the OPOS Printer Driver Name
- 4.1.2.2. Fill in the OPOS MICR Driver Name and check the box Use OPOS MICR
- 4.1.2.3. Fill in the OPOS Check Scanner Driver Name and check the box Use OPOS Check Scanner

Post Configuration

POS Number: POS Type: Active till

General | WinPOS HW | Non WinPOS 1 | Non WinPOS 2 | Auth. - EFT - I/F | E-Ticket - OPOS

E-Ticket

E-Ticket Active Virtual POS Number: Virtual Cashier Number:

OPOS

OPOS Printer Driver Name:

OPOS Line Display Driver Name:

OPOS Drawer Driver Name:

OPOS Scanner Driver Name:

OPOS Scale Driver Name:

OPOS MICR Driver Name: Use OPOS MICR

OPOS MSR Driver Name: Use OPOS MSR

OPOS Keyboard Driver Name:

OPOS KeyLock Driver Name: Use OPOS KeyLock

OPOS Coin Dispenser Driver Name: Use OPOS Coin Dispenser

OPOS Check Scanner Driver Name: Use OPOS Check Scanner

⏪ ⏩ ⏴ ⏵ OK Cancel Apply

4.2. Check Imaging Setup (Currently in V8 only)

- 4.2.1. You need to check the box for Scan Tender Image in Tender Maintenance | General Parameters Tab

© StoreNext Retail Technologies LLC 2005

StoreNext Retail Technologies LLC endeavors to ensure that the information in this document is correct and fairly stated but does not accept liability for any error or omission.

The development of StoreNext products and services is continuous and published information may not be up to date. It is important to check the current position with StoreNext. This document is not part of a contract or license save insofar as may be expressly agreed.