






The logo for ISS 45, consisting of the letters 'ISS' in a large, bold, black serif font above the number '45' in a similar font, all enclosed within a thin black rectangular border.

-  *ISS45 Version 7.1.3.0-050*
-  *Release Notes & What's New*
- 
- 
- 

ISS45 V7 Release Notes & What's New

Date of Issue	Product Identification Number	Part Number	Brief Description
November 2007	45001/080	89000408	7.1.2.1-050 Release
April 2008	45001/080	89000444	7.1.3.0-050 Prelim
June 2008	45001/080	89000444B	7.1.3.0-050 Updated

**© Copyright StoreNext Retail Technologies LLC 1995-2008
All rights reserved**

This publication is protected by federal copyright law. No part of this publication may be reproduced or transmitted into any human or computer language in any form or by any means, stored in a retrieval system, transmitted, redistributed, translated or disclosed to third parties, or de-compiled in any way including, but not limited to, photocopy, photograph, electronic, mechanical, magnetic or manual without the express written permission of StoreNext Retail Technologies LLC or its licensors, if any. This document, notwithstanding the above, may be distributed in electronic or printed form to personnel who are employed by either (1) a StoreNext customer of the subject system of this document or (2) personnel from an authorized StoreNext dealer of the subject system of this document. All copies, so distributed and/or so authorized, shall contain a full copy of this copyright notice.

StoreNext Retail Technologies LLC endeavors to ensure that the information in this document is correct and fairly stated but does not accept liability for any error or omission. StoreNext Retail Technologies LLC makes no representation or warranties with respect to the contents hereof, and specifically disclaims any implied warranties of merchantability or fitness for a particular purpose or non-infringement. No commitments by StoreNext or its suppliers are made from this documentation which is provided for information only.

Development of StoreNext products and documentation is continuous: StoreNext Retail Technologies LLC reserves the right to revise this publication and to make changes from time to time in the contents hereof or in the products herein described or discussed without notice and without any obligation of StoreNext Retail Technologies LLC to notify any person or organization of such revision or changes. Information published in this document will likely become obsolete over time and it is recommended that users regularly check for updates and newer versions.

StoreNext Retail Technologies LLC has prepared this manual for use by users, authorized third parties and personnel of StoreNext Retail Technologies LLC as a guide to the proper installation, operation, customization and/or maintenance of StoreNext Retail Technologies LLC equipment and software. The drawings and specifications contained herein are the property of StoreNext Retail Technologies LLC and/or its licensors.

Third-party products, services, or company names referenced in this document may be trademarked or copyrighted by their respective owners, and are for identification purposes only.

Copyrights, trademarks and license agreements shall be governed and construed in accordance with the laws of the State of Texas and the Federal Arbitration Act, and shall benefit Retailix, its successors, and assigns.

Address comments and corrections to:

StoreNext Retail Technologies LLC
Software Program Director
6100 Tennyson Parkway
Suite 130
Plano, Texas 75024

Table of Contents

Table of Contents	i
Introduction	3
POS Enhancements	4
10089 – TLOG Support for FSA.....	4
10214 – MTXEPS Receipts	5
10215 – Dual Cash Drawer Support	7

Introduction

Several new features and enhancements were made recently to the StoreNext ISS45 system as a result of customer change requests. These changes are reflected in the accompanying ISS45 7.1.3.0-050 software. The Change Request Document (CRD) number assigned to each enhancement is listed in the description heading.

These improvements are explained in detail in the following pages and are not included in the latest Office Users Guide, WinPOS User Guide or Office Administrator's Reference. If you have any questions regarding this release, please contact StoreNext Support.

POS Enhancements

10089 – TLOG Support for FSA

FSA (Flexible Spending Arrangement) flags (bits) have been added to the Item and Department TLOG records in this ISS45 release. The following bits have been established for both Non-Prescription Rx Healthcare (NonRx) and Prescription (Rx) items and departments:

PLU 0x01

- optNonRx – 1 bit – offset 11, bit 3 (if starting from 0)
- optRx – 1 bit – offset 43, bit 5 (if starting from 0)

DEP 0x02

- optRx – 1 bit – offset 15, bit 5 (if starting from 0)
- optNonRx – 1 bit – offset 15, bit 6 (if starting from 0)

A new information transaction has been added to support FSA. The INFO2 transaction type opcode is 0x70 0xB2 and contains the following data structure:

struct trs_info2_fsa_

```
{
    unsigned char opcode;           // 0 0x70
    unsigned char function;        // 1 0xB2
    long RxAmount;                 // 2
    long NonRxAmount;              // 6
    unsigned char nu[34];          //10
    struct trans_tail_ tail;        //44
};
```

POSTT, a program that displays binary transaction records, has been modified to include the updated TLOG records.

10214 – MTXEPS Receipts

ISS45 can now print EFT receipt data received from MTXEPS for EFT approvals, balance inquiries, card activations (deactivations and recharges) and declines. In previous releases, Multi-Part Receipt Data for EFT transactions could only be generated through ISS45 templates.

If this new option is enabled, MTXEPS receipt data will be written to the Electronic Journal file so that it will be displayed as a text transaction. (The data is also available during the ticket recovery process so that it can be parsed from the TLOG and re-printed).

Note:

MTXEPS WinEPS must be setup to require a receipt for the tender. EFT receipts (including decline receipts) will print only if the tender has the ("Z") TAC setup in WinEPS under Terminal Configuration.

Note:

MTXEPS receipts do not need to be set up by the store and are hard-coded to print in a specific manner. However, additional store information can be added through MTXEPS.

Note:

By default, check account numbers are not masked. The store can modify the tender to be truncated through MTXEPS.

New Parameter

To support MTXEPS Receipts, a new parameter has been established in the new **Reorganize Receipt Parameters** Screen (6-1-3-6).

Reorganize Receipt Parameters Page 1

1. Buffer printing.....	[X]
2. Combine same items.....	[]
3. Omit voided and cancelled items.....	[]
4. Your savings today.....	[X]
5. Sort receipt.....	[X]
6. Main sort.....	Department name + total [↓]
7. Second sort.....	Alpha [↓]
8. Combine same weighed items.....	[X]
9. Use MTX Receipt Data.....	[]

“Use MTX Receipt Data”
Parameter Checkbox

[F2] Update

Parameter	Explanation
Use MTX Receipt Data	When this parameter is checked, the system will use MTX receipts on EFT transactions.

Note:

If this parameter is unchecked, ISS45 Templates will be used for EFT receipt printing.

Note:

The "Buffered printing" flag (on the same screen) must be checked for MTXEPS receipts to work correctly.

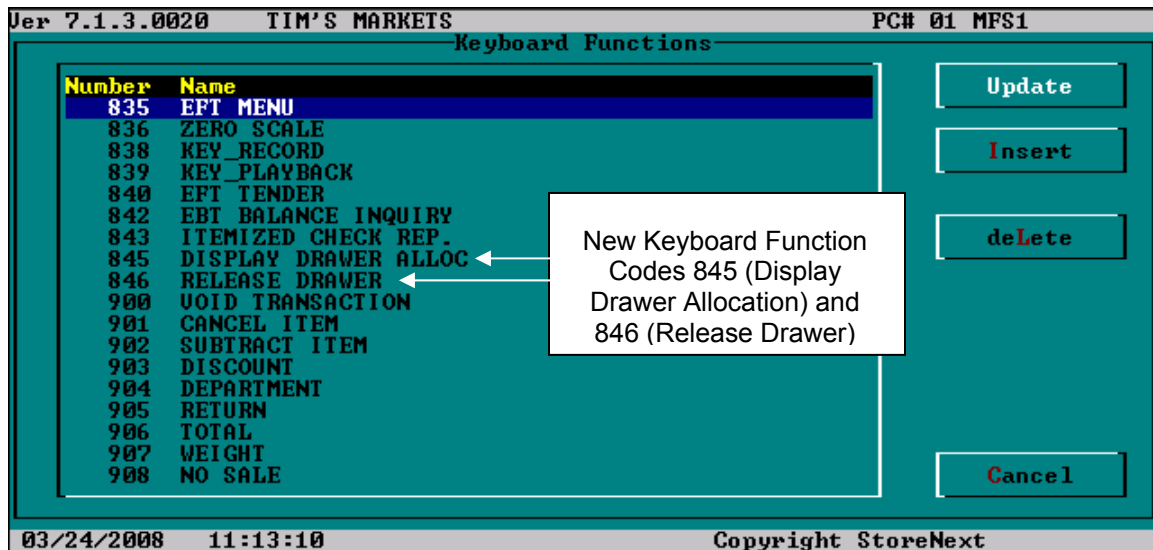
10215 – Dual Cash Drawer Support

In this release ISS45 can support attaching two OPOS cash drawers to one POS terminal. For productivity purposes some stores may desire this feature, allowing two cashiers to use the same POS and still have the advantages of cashier balancing.

New Keyboard Function Codes

The following new keyboard function codes have been added in this release to support this development:

- Keyboard Function Code 845 – Display Drawer Allocation (Displays which drawer belongs to which cashier)
- Keyboard Function Code 846 – Release Drawer (Displays drawer assignment and asks which drawer to release)



Related Parameters

The POST Configuration Screen (6-1-4-1) for a selected POS terminal contains two fields that must be checked to indicate a dual cash drawer environment.

```

Ver 7.1.3.0020      TIM'S MARKETS      PC# 01 MFS1
                                POST Configuration 1
POS number.....> 1 CDS Active [ ]   Scanner:
POS type.....>5000      [↓]         COM.....> 5
General:
2X20 kbd. display.....> [ ]         IRQ.....> 5
Generate sound from....> PC SOUND [↓] Baud Rate...> 9600 [↓]
Battery backup.....> [N]           Data Bits...> 8
Monitor type.....> UGA Color[↓]     Parity.....> Even [↓]
Touch screen type.....> None [↓]    Handshake...> [N]
Weight on TeamPOS.....> [N]         Scale:
Port for print commands> None [↓]    Type.....> 9000 [↓]
Drawer in use.....> [N] ←           Cash Drawer POST
connected to printer.> [ ] ←       Configuration Settings
Dual drawer enabled...> [ ] ←
Printer:
Type.....> Axiohm 758 [↓]          COM.....> 0
Port.....> None [↓]              IRQ.....> 0
MIGR reader in use....> [N] OPOS..> [ ] Type.....> None [↓]
Enable Check Flip.....> [N]       Baud rate...> None [↓]

[F2] Update  [Auth/APT]  [F6] Next Page  [F9] Prev  [F10] Next
03/24/2008  11:20:19      Copyright StoreNext

```

Field	Description
Drawer in Use	This box must be checked to indicate a cash drawer is in use.
Dual Drawer Enabled	Check this box to indicate two cash drawers are attached to the POS.

WinPOS.ini Changes

The WinPOS.ini file now supports entries to instruct WinPOS that OPOS cash drawers are in use and the driver names associated with each.

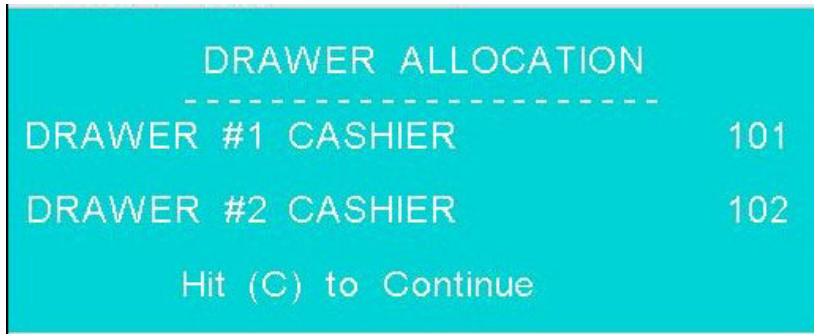
- “OposDrawer=Yes” – Indicates that OPOS cash drawers are in use. If set to “No” (the default), existing dual cash drawer functionality is used.
- “DefaultDrawer1Name= “ – Enter the driver name of the first OPOS cash drawer (after the equal sign).
- “DefaultDrawer2Name= “ – Enter the driver name of the second OPOS cash drawer (after the equal sign).

Dual Drawer Functionality

Drawer assignment has been added to the login process for POS terminals configured for dual drawers. The first cashier that signs onto the POS is assigned to the first cash drawer. The drawer will open; the cashier will insert a till and close the drawer. In order for another cashier to sign onto the POS to use the second cash drawer, the first cashier must

sign off (and choose not to release the drawer – see below). The second cashier that signs onto the POS is assigned to the second cash drawer. The drawer will open; the cashier will insert a till and close the drawer.

Any cashier that attempts to sign onto the POS when both cash drawers are assigned to other cashiers will get a notification that both cash drawers are allocated and will not be permitted to sign on.



Note:

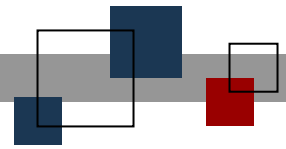
The Drawer Allocation display will also appear for non-OPOS dual drawer configurations.

If the Cashier Utilities Folder's "Force Log Off" option is used to log off a cashier that is assigned to a dual cash drawer, the drawer will be released as well.

When a cashier signs off, they will be prompted to release the drawer.



If the cashier chooses not to release the drawer, they will still be assigned to that cash drawer. If the cashier chooses to release the drawer, the cash drawer opens for the till to be removed. The drawer is then available for another cashier to sign on.



© StoreNext Retail Technologies LLC 2008

StoreNext Retail Technologies LLC endeavors to ensure that the information in this document is correct and fairly stated but does not accept liability for any error or omission.

The development of StoreNext products and services is continuous and published information may not be up to date. It is important to check the current position with StoreNext. This document is not part of a contract or license save insofar as may be expressly agreed.