



# ISS 45

 *Release Notes & What's New*

*ISS45 8.1.2.1-070*



## ISS45 Release Notes & What's New 8.1.2.1-070

<b>Date of Issue</b>	<b>Product Identification Number</b>	<b>Part Number</b>	<b>Brief Description</b>
January 2005	45001/081	89000195	Initial Release
June 2005	45001/081	89000233	8.1.0.1 Release
December 2005	45001/081	89000263	8.1.1.0 Release Preliminary
January 2005	45001/081	89000263	8.1.1.0 Release Final
July 2006	45001/081	89000308	8.1.1.1 Release
December 2006	45001/081	89000308	8.1.1.1 Release
July 2007	45001/081	89000401	8.1.2.1 Release
December 2007	45001/081	89000401	8.1.2.1-070 Release
January 2008	45001/081	89000417	8.1.2.1-070 Release Updated

**©Copyright StoreNext Retail Technologies LLC 1995-2008  
All rights reserved**

This publication is protected by federal copyright law. No part of this publication may be reproduced or transmitted into any human or computer language in any form or by any means, stored in a retrieval system, transmitted, redistributed, translated or disclosed to third parties, or de-compiled in any way including, but not limited to, photocopy, photograph, electronic, mechanical, magnetic or manual without the express written permission of StoreNext Retail Technologies LLC or its licensors, if any. All copies, so authorized, shall contain a full copy of this copyright notice.

StoreNext Retail Technologies LLC endeavors to ensure that the information in this document is correct and fairly stated but does not accept liability for any error or omission. StoreNext Retail Technologies LLC makes no representation or warranties with respect to the contents hereof, and specifically disclaims any implied warranties of merchantability or fitness for a particular purpose or non-infringement. No commitments by StoreNext or its suppliers are made from this documentation which is provided for information only.

Development of StoreNext products and documentation is continuous: StoreNext Retail Technologies LLC reserves the right to revise this publication and to make changes from time to time in the contents hereof or in the products herein described or discussed without notice and without any obligation of StoreNext Retail Technologies LLC to notify any person or organization of such revision or changes. Information published in this document will likely become obsolete over time and it is recommended that users regularly check for updates and newer versions.

StoreNext Retail Technologies LLC has prepared this manual for use by users, authorized third parties and personnel of StoreNext Retail Technologies LLC as a guide to the proper installation, operation, customization and/or maintenance of StoreNext Retail Technologies LLC equipment and software. The drawings and specifications contained herein are the property of StoreNext Retail Technologies LLC and/or its licensors.

Third-party products, services, or company names referenced in this document may be trademarked or copyrighted by their respective owners, and are for identification purposes only.

Copyrights, trademarks and license agreements shall be governed and construed in accordance with the laws of the State of Texas and the Federal Arbitration Act, and shall benefit Retailix, its successors, and assigns.

Address comments and corrections to:

**StoreNext Retail Technologies LLC**  
Software Program Director  
6100 Tennyson Parkway  
Suite 130  
Plano, Texas 75024



- *Release Notes for ISS45*
- *v 8.1.2.1-070*
- 
- 
-

**Release Notes for ISS45 - v8.1.2.1-070**

<b>Date of Issue</b>	<b>Product Identification Number</b>	<b>Part Number</b>	<b>Brief Description</b>
December 2007			Initial Release

**Copyright® StoreNext Retail Technologies LLC 1995-2007  
All rights reserved**

This publication is protected by federal copyright law into any human or computer language in any form or by any means, electronic, mechanical, magnetic, manual. No part of this publication may be copied or distributed, stored in a retrieval system, or translated or otherwise, or disclosed to third parties without the express written permission of StoreNext Retail Technologies LLC.

StoreNext Retail Technologies LLC makes no representation or warranties with respect to the contents hereof and specifically disclaims any implied warranties of merchantability or fitness for a particular purpose. StoreNext Retail Technologies LLC further reserves the right to revise this publication and to make changes from time to time in the contents hereof without obligation of Fujitsu Transaction Solutions, Inc. to notify any person or organization of such revision or changes.

StoreNext Retail Technologies LLC has prepared this manual for use by users, authorized third parties and personnel of StoreNext Retail Technologies LLC as a guide to the proper installation, operation, customization and/or maintenance of StoreNext Retail Technologies LLC equipment and software. The drawings and specifications contained herein are the property of StoreNext Retail Technologies LLC.

Address comments and corrections to:

StoreNext Retail Technologies LLC  
ISS45 Program Director  
1250 East Arques Avenue  
M/S 363  
Sunnyvale, CA 94085

# Table of Contents

<b>Table of Contents</b> .....	<b>i</b>
<b>Introduction</b> .....	<b>3</b>
<b>CRD Listing</b> .....	<b>4</b>
9667 – FSA Compliance Implementation (FO/POS/Sys).....	4
Front Office.....	5
POS.....	8
System .....	15
10082 – TLOG Support for FSA (POS/Sys).....	16
POS.....	16
System .....	16



# Introduction

Several new features and enhancements were made recently to the StoreNext ISS45 system as a result of customer change requests and internal research and development. These changes are reflected in the accompanying ISS45 8.1.2.0-070 software. The Change Request Document (CRD) number assigned to each enhancement is listed in the description heading.

Following the change description is an abbreviation (or combination thereof) of the ISS45 area affected:

(FO) – Front Office

(POS) – WinPOS

(Sys) – System / Services

If you have any questions regarding this release, please contact StoreNext Support.

# CRD Listing

## 9667 – FSA Compliance Implementation (FO/POS/Sys)

The US Internal Revenue Service has placed new restraints on stores wishing to accept health-care debit account cards, such as Flexible Spending Arrangement (FSA) cards, Health Reimbursement Account (HRA) cards, etc. For supermarkets, these rules go into effect January 1, 2008. As of that date, financial transactions using these cards for tender will be rejected by the financial networks unless the store has implemented an “Inventory Information Approval System” (IIAS) that can determine which items in the customer’s order are qualified for health-care reimbursement using that card.

The regulations stipulate that FSA cards — designated by Bank Identification Numbers (BINs) and/or card ranges — cannot be accepted unless the messaging from the POS and EFT systems indicate that the POS system’s IIAS has filtered out those items that are not healthcare-qualified for tender. The FSA debit (likely within a split-tender transaction) can tender only the sum of the qualified health-care and prescription co-pay items. Retailers that do not have the IIAS feature option in ISS45 will not be able to accept FSA or other health-care debit account cards.

The POS must separate prescription co-pay amounts from the other health-care qualified purchases and report them as separate totals to the EFT payment system. With the FSA/IIAS option, ISS45 POS is now able to provide the FSA Amount and Prescription (Rx) amount to the EFT processor as well as to the Total Transaction Value. Customers using FSA cards must tender them as the **first** payment medium in a transaction. Card balances are used to pay prescription co-pay (Rx) items/departments first and then the other health-care qualified items are paid next from the card’s account.

When the FSA tender is complete, the customer tenders other media to complete the transaction for any remaining balance due on the health-care qualified items (for insufficient funds in the FSA account to cover all qualified purchases) plus the payment due on all non-healthcare qualified items.

**Note:**

MTXEPS WinEPS version 823.0 (or higher) is required to use this feature.

## Front Office

### New Parameters

To support FSA card processing and FSA templates for printing totals and disclaimers, new parameters have been established. The following General System Parameters are located in the **new** Store \ POST \ Operational \ FSA folder.

Parameter	Explanation
Enable Healthcare Item Substantiation	When this parameter is set to Yes, FSA card processing is enabled.
Template name for FSA totals	This parameter defines the template used to print Non-Rx, Rx and FSA totals on the receipt. If blank, these totals will not be printed.
Template name for FSA Disclaimer	This parameter defines the template used to print an FSA disclaimer (on a separate slip) when an FSA tender is used in the ticket. If blank, this additional slip will not print.

The following General System Parameters are located in the existing Store \ POST \ Presentation \ Receipt \ Signs folder.

Parameter	Explanation
Non-Rx Healthcare print character	This parameter defines the character to print when an item has the Non-Rx Healthcare Item flag set in PLU Maintenance.
Rx print character	This parameter defines the character to print when an item has the Rx Item flag set in PLU Maintenance.

## New PLU Maintenance Fields

Two new fields have added to the PLU Maintenance Screen's Parameter 1 Tab under the new FSA heading: **Non-RX Healthcare Item** and **RX Item**.

The screenshot shows the 'PLU Maintenance' window with the 'Parameter 1' tab selected. The 'FSA' section at the bottom right contains two new checkboxes: 'Non-Rx Healthcare Item' and 'Rx Item'. A callout box labeled 'New PLU Maintenance Fields' points to these two checkboxes. Other sections include 'General', 'Coupon Setting', 'Restrictions', and 'Allow Payment by'.

### Note:

The **Food Stamps** checkbox has been moved under the **WIC** checkbox in the "Allow Payment by" section.

Field	Description
Non-Rx Healthcare Item	If this parameter is checked, the item is a Non-Rx Healthcare product.
Rx Item	If this parameter is checked, the item is an Rx product.

### Note:

If the **Food Stamps** checkbox is checked, the **Non-Rx Healthcare Item** and **Rx Item** checkboxes will be disabled.

If the **Non-Rx Healthcare Item** checkbox is checked, the **Food Stamps** and **Rx Item** checkboxes will be disabled.

If the **Rx Item** checkbox is checked, the **Food Stamps** and **Non-Rx Healthcare Item** checkboxes will be disabled.

## New Department Flags

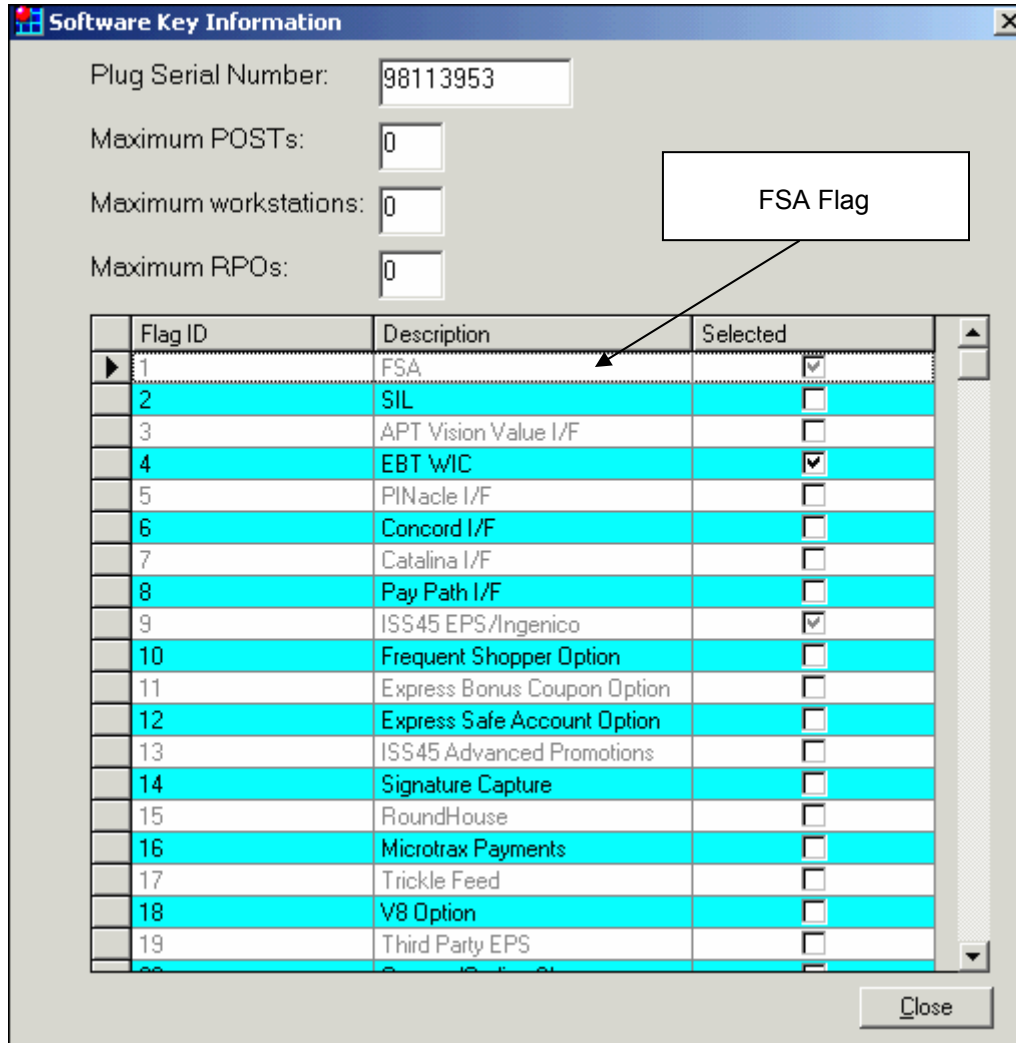
Two new fields have added to the Department Maintenance Screen's Flags Tab under the new FSA heading: **Non-RX Healthcare Item** and **RX Item**.

The screenshot shows the 'Department Maintenance' window with the 'Flags' tab selected. The 'FSA' section at the bottom right contains two new checkboxes: 'Non-Rx Healthcare' and 'Rx'. A callout box labeled 'New Department Maintenance Flags' points to these two checkboxes. Other visible options include 'Allow Discount', 'Allow Weighing', 'Negative-entry department', 'Non-merchandise department', 'Excise Tax', 'Exclude from min purchase', 'Payment by Food Stamps', 'Payment by WIC', 'Decimal Quantity', 'Cost-Plus department', 'Include in Saving Plus total', 'Fuel department', 'No Member Card points', 'Trading Stamps eligible', 'Store Coupon', 'Vendor Coupon', 'Bonus Coupon', and 'No manual amount entry'.

Field	Description
Non-Rx Healthcare Item	If this parameter is checked, the department is a Non-Rx Healthcare department.
Rx Item	If this parameter is checked, the department is an Rx department.

## Software Key

Flag ID #1 on the Software Key Information screen is now “FSA” to enabling/disabling FSA functionality:



## POS

The POS has been modified to support:

- The new PLU Maintenance parameters.
- The new Department Maintenance parameters.

- The new General System parameters.
- Printing the FSA, Non-Rx Healthcare and Rx data on a receipt.
- The new FSA transaction.
- MTXEPS FSA card processing.
- Partial FSA card tendering.
- Accumulating FSA, Non-Rx Healthcare and Rx totals for a ticket.
- The new FSA template and FSA indicator on the receipt.
- Adding a flag in extended Media transaction to indicate that the tender was FSA.

## Example FSA Transaction

The following is an example on how an FSA transaction is handled:

- The cashier scans or manually keys in \$10.00 for an RX item, \$12.50 for Non-Rx Healthcare items, and \$5.00 in general merchandise. The customer's total is \$27.50 (excluding taxes)
- The POS checks the Non-Rx Healthcare print character and Rx print character General System Parameters.
- The POS displays a flag next to each item. (For example H for Non-Rx Healthcare and P for Rx).
- The POS checks the General System parameter Enable Healthcare Item Substantiation.
- If set to Yes, the Non-Rx Healthcare item amounts (and applicable taxes) are added to the Non-Rx Healthcare total and the Rx item amounts are added to the Rx total.
- The cashier presses the Total key.
- The cashier presses the EFT key.
- The customer swipes an FSA card at the Pin Pad.
- The customer selects Credit on the Pin Pad display if prompted for tender type.
- The POS gets the flag from MTXEPS indicating whether the tender is an FSA tender.
- If the tender is FSA:
  - The POS sends Rx and Non-Rx Healthcare amounts to MTXEPS

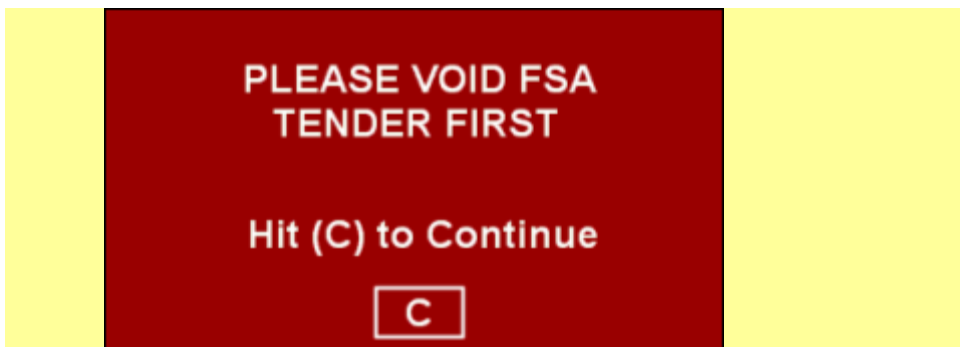
- MTXEPS sends data to the switch for authorization.
- If the transaction is not authorized, the POS is returned to the Tender mode.
- If the transaction is authorized, the POS retrieves the FSA card number and other information from MTXEPS.
- The POS writes the Non-Rx Healthcare total, Rx total, Non-Rx Healthcare amount tendered and Rx amount tendered into the TLOG.
- The System parameter **Template name for FSA totals** is checked:
  - If the parameter contains a value and the value represents a valid file on the system, the file is used as the template for printing after Change.
  - If the parameter contains no value, a template is not printed.
- The System Parameter **Template name for FSA Disclaimer** is checked.
  - If the parameter contains a value and the value represents a valid file on the system, the file is used as the template for printing before the receipt footer.
  - If the parameter contains no value, a template is not printed.
- If the tender is not FSA:
  - Process as credit card using current functionality.

### **Example FSA Transaction (with Voided Items)**

The following is how the FSA transaction is handled with voided items after a partial tender of the FSA Card:

**Note:**

FSA items (Non-Rx Healthcare or Rx items) cannot be voided if there have been any FSA tenders in a transaction. ISS45 first requires the cashier to void the FSA tender before FSA items can be voided. If an FSA item void is first attempted, the following error message will be displayed:



- Cashier scans or keys Non-Rx Healthcare and/or Rx items.
- Partial payment is made with the FSA tender.
- The Non-Rx Healthcare total and/or Rx total is adjusted depending on coverage by partial payment. The coverage is based on a hierarchy of payment: Rx items first, then Non-Rx Healthcare.
- Cashier selects Void.
- Cashier scans or keys a Non-Rx Healthcare or Rx item to void.
- If the item to void is either a Non-Rx Healthcare or Rx item, the POS must validate there has been no FSA tenders accepted in the transaction.
- If a FSA tender has been accepted, then the item can not be voided and the POS prompts the cashier to void the FSA tender before voiding the item (see above error message).
- Cashier presses Void tender.
- FSA partial tender voided by MTXEPS.
- The Non-Rx Healthcare total and/or Rx total is adjusted depending on partial payment coverage (i.e., amount applied to Rx, then amount applied to Non-Rx Healthcare).
- Cashier voids the item.
- The POS adjust the Total Due.
- If the item was either a Non-Rx Healthcare or Rx item, adjust the Non-Rx Healthcare and/or Rx total.
- The POS continues normal processing.

## Modified Receipt

The customer receipt displays the new flags for Non-Rx Healthcare and Rx Items, the FSA Card Payment descriptor, the FSA Totals and Disclaimers Template.

**Retailer Logo**

Header Line #1  
Header Line #2

Bread	2.65	F
Milk	1.25	F
Magazine	5.99	T
Advil	3.55	H
Vicodin	24.50	P

Tax Paid  
Sales Tax 5% 1.70

Balance Due 39.64  
FSA 28.05  
Cash 11.59  
Change 0.00

FSA Purchase Summary:  
Non Rx 3.55  
Rx 24.50  
FSA Total 28.05

Note: Individual FSA cards can represent multiple personal accounts. The amount tendered with an FSA card in this transaction cannot accurately reflect which FSA account(s) the authorized amount was applied against.

Receipt Footer

Annotations:

- Non-Rx Healthcare and Rx Items (points to Advil and Vicodin)
- New Flags for Non-Rx Healthcare and Rx Items (points to H and P flags)
- FSA card payment descriptor (points to FSA 28.05)
- New FSA Totals Template (points to FSA Purchase Summary)
- New FSA Disclaimer Template (points to the Note)

**Note:**

Modify the template defined in the new **Template Name for FSA Totals** parameter through the Front Office Templates/Multi part receipts application located in the POST Controls folder (under Database Management).

Report format

HEADER 0000000002 0000000003 0000000004 0000000005 SECTION FOOTER	<pre> ***** FSA Purchase Summary:   Non-Rx    &lt;HC_TOTAL&gt;   Rx        &lt;RX_TOTAL&gt; FSA Total  &lt;FSA_TOTAL&gt; *****           </pre>
---	---

If the store does not want the totals to print on the receipt, leave the **Template Name for FSA Totals** parameter blank.

**Note:**

Modify the template defined in the new **Template Name for FSA Disclaimer** parameter through the Front Office Templates/Multi part receipts application located in the POST Controls folder (under Database Management).

Report format

HEADER 0000000012 0000000002 0000000011 0000000010 0000000009 0000000009 0000000015 0000000014 SECTION FOOTER 0000000192	<pre> ***** NOTE: Individual FSA cards can represent multiple personal accounts. The amount tendered with an FSA card in this transaction cannot accurately reflect which FSA account(s) the authorized amount was applied against. *****           </pre>
---	--

If the store does not want the disclaimer to print on the receipt, leave the **Template Name for FSA Disclaimer** parameter blank.

## Cashier EJ Flags

The Cashier Electronic Journal Screen displays the new Non-Rx Healthcare and Rx item flags (in the same location as the food-stampable flag).

DANNON 24PK 500ML PL	\$4.74	t F
FRUIT RAFTS	\$0.65	t F
Advil	\$3.55	t H
Vicodin	\$15.45	t P
BALANCE DUE	\$ 26.40	
FSA	\$19.00	
CASH	\$ 7.40	
<b>FSA Purchase Summary:</b>		
Non-Rx	\$ 3.84	
Rx Total	\$ 16.72	
<b>FSA Total</b>	<b>\$ 20.56</b>	
CHANGE	\$0.00	
<b>0.04</b> Weight	lb	
	<b>\$0.00</b> Balance Due	
CHANGE AMOUNT	0.00	

New Flags for Non-Rx  
Healthcare and Rx Items

## New Balance Due Screen

To view the FSA Total on the Balance Due screen, set the General System Parameters **Prompt large total on cashier display** and **Enhanced large total prompt on cashier display Sub Total, Tax and FS eligible amount** (located in the Store / POST/ General folder) both to "Yes". The FSA Total will display below the Food Stamp Total:

BALANCE DUE	
12.89	
Sub Total	12.08
Tax	0.81
Ticket Total	12.89
Food Stamp Eligible	5.59
FSA Total	6.49

## System

A new transaction type for the TLOG has been created for Non-Rx Healthcare and Rx transactions. POSTT, a program that displays binary transaction records, has been updated to include the translation of the Non-Rx Healthcare Total and Rx Total fields from the Opcode 70-B2 information transaction.

## 10082 – TLOG Support for FSA (POS/Sys)

FSA flags (bits) have been added to the Item and Department TLOG records in this ISS45 release.

### POS

The following bits have been established for both Non-Prescription Rx Healthcare (NonRx) and Prescription (Rx) items and departments:

#### PLU 0x01

- optNonRx – 1 bit – offset 11, bit 3 if starting from ZERO
- optRx – 1 bit – offset 43, bit 5 if starting from ZERO

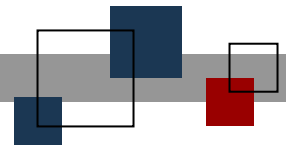
#### DEP 0x02

- optRx – 1 bit – offset 15, bit 5 if starting from ZERO
- optNonRx – 1 bit – offset 15, bit 6 if starting from ZERO

### System

POSTT, a program that displays binary transaction records, has been modified to include the updated TLOG records.





**© StoreNext Retail Technologies LLC 2008**

StoreNext Retail Technologies LLC endeavors to ensure that the information in this document is correct and fairly stated but does not accept liability for any error or omission.

The development of StoreNext products and services is continuous and published information may not be up to date. It is important to check the current position with StoreNext. This document is not part of a contract or license save insofar as may be expressly agreed.