




ScanMaster

- *ScanMaster Version 2 Installation Guide*
- *NCR 7611 POS Terminal*
- *(RealPOS 50)*
-
-



ScanMaster V2 Installation Guide

Date of Issue	Product ID	Part Number	Brief Description
April 2013	45001/083	89000761	NCR RealPOS 60 / 82XRT
June 2013	45001/083	89000768	NCR RealPOS 60 / 82XRT v1.01
February 2014	45001/083	89000801	NCR RealPOS 60 / 82XRT v1.02
February 2014	45001/083	89000803	NCR RealPOS 40 Release 2
January 2015	45001/083	89000821	NCR RealPOS XR7
April 2015	45001/083	89000827	NCR RealPOS 25 Release 2
May 2015	45001/083	89000832	NCR RealPOS 50

**©Copyright NCR Corporation 1995-2015
All rights reserved**

This publication is protected by federal copyright law. This document and its contents are the proprietary, confidential information and property of NCR Corporation ("NCR"). Unauthorized disclosure, reproduction, distribution or use of this document and/or its contents in any form is strictly prohibited. No part of this publication may be reproduced or transmitted into any human or computer language in any form or by any means, stored in a retrieval system, transmitted, redistributed, translated or disclosed to third parties, or de-compiled in any way including, but not limited to, photocopy, photograph, electronic, mechanical, magnetic or manual without the express written permission of NCR or its licensors, if any. This document, notwithstanding the above, may be distributed in electronic or printed form by NCR to personnel who are employed by either (a) a licensee and end user of the subject system of this document or (b) personnel from an authorized NCR Channel Partner or Solution Provider of the subject system of this document. All copies of this document so distributed and/or so authorized, shall contain a full copy of this copyright notice.

NCR has prepared this document as a guide to the proper installation, operation, customization and/or maintenance of NCR products. The drawings and specifications contained herein are the property of NCR and/or its licensors.

NCR endeavors to ensure that the information in this document is correct and fairly stated but does not accept liability for any error or omission. NCR makes no representation or warranties with respect to the contents hereof, and specifically disclaims any implied warranties of merchantability or fitness for a particular purpose or non-infringement. No commitments by NCR or its suppliers are made by or from this documentation which is provided for information only.

Development of NCR products and documentation is continuous: NCR reserves the right to revise this publication and to make changes at any time to the contents hereof or to the products herein described or discussed without notice and without any obligation for NCR to notify any person or organization of such revision or changes. Information published in this document will likely be superseded, and it is recommended that users regularly check for updates and newer versions.

The trademarks NCR, Retailix, StoreNext, ISS45, ScanMaster, R10, ACS, PocketOffice, RPO, RBO, ABO, Connected Payments, ServerEPS, Connected Services, Connected Loyalty, WinEPS and all other NCR product names are registered trademarks or trademarks of NCR; all other trademarks or registered trademarks are the property of their respective owners. Third-party products, services, or company names referenced in this document may be trademarked or copyrighted by their respective owners, and are for identification purposes only. Copyrights, trademarks and license agreements shall be governed and construed in accordance with the laws of the State of New York and the Federal Arbitration Act, and shall benefit NCR, its successors, and assigns.

Address comments and corrections regarding this document to:

Attn: Software Program Director
NCR
797 Commonwealth Drive
Warrendale, PA 15086

Configure Bios and POSReady 7 on the NCR RP50 (7611) for ScanMaster

Check the BIOS settings (press Delete on boot up to enter SETUP) to ensure that the Network : PCI LAN Realtek PXE B01 D00 is Disabled and under Boot Priority Order that the 1st device is set to the HDD. If the Network boot is enabled, the boot time of the POS will be considerably longer.

The NCR RP50 (7611) comes preloaded with POSReady 7 SP1. For the out-of-box setup, only attach the keyboard and mouse. After initial power on, a Set Up Windows screen will appear. Verify or select the correct Country or region, Time and Currency and Keyboard layout. Click Next.

Enter a computer name, i.e., NCR_Lane1. Click Next.

Accept the license terms. Click Next.

Review your time and date settings screen. Select your time zone. Set the date and time.

Windows will now finalize your settings and reboot.
The POS will auto login as user NCR and password NCR.

Windows Settings:

Click Start, and type "**secpol.msc**" in the search area and hit Enter. In the left list, choose "**Local Policies**", then "**Security Options**."

In the right pane:

Set "**Accounts: Administrator account status**" to **Enabled**.

Set "**Interactive logon: Do not display last user name**" to **Enabled**.

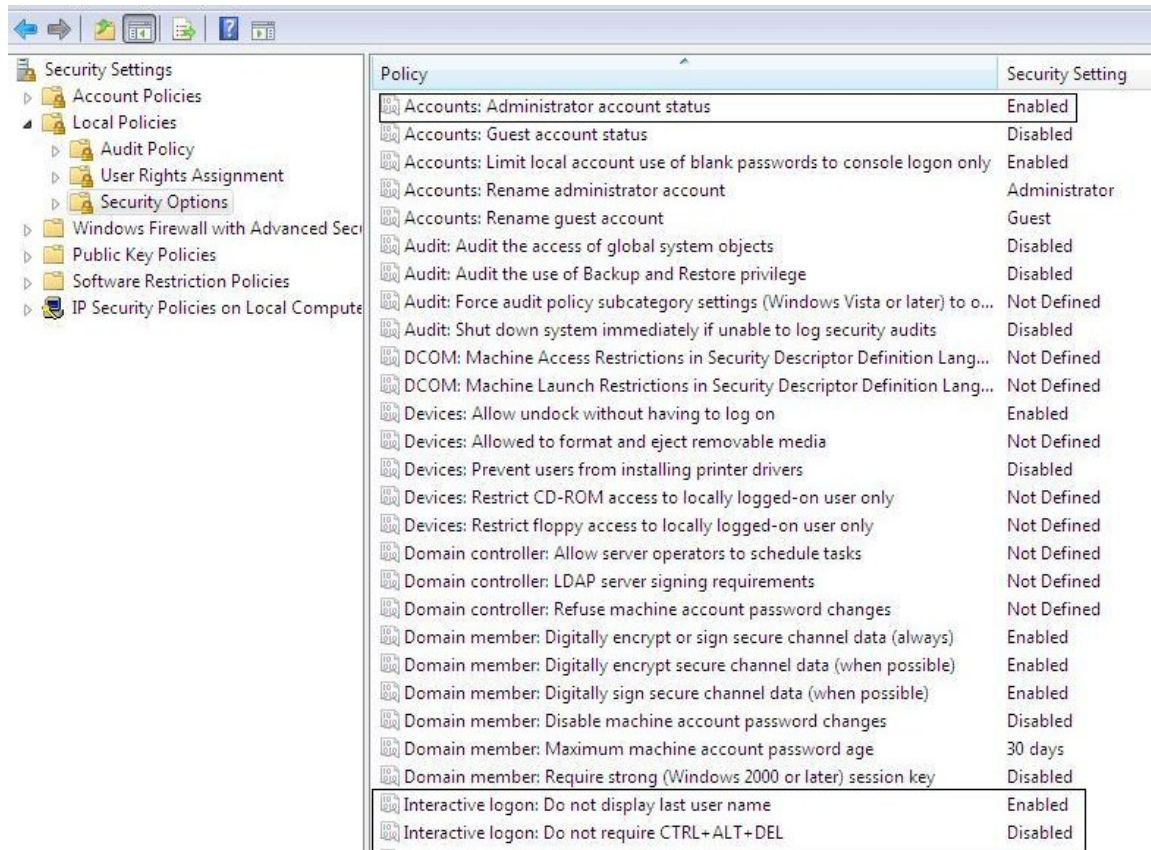
Set "**Interactive logon: Do not require CTRL + ALT + DEL**" to **Disabled**.

Set "**User Account Control: Admin Approval Mode for the Built-in Administrator account**" to **Disabled**.

Set "**User Account Control: Behavior of the elevation prompt for administrators in Admin Approval Mode** to **Elevate without Prompting**.

Set "**User Account Control: Run all administrators in Admin Approval Mode** to **Disabled**. (**Error 70 – Permission Denied errors after the ScanMaster POS install have been seen in some instances if this setting is Enabled or Not Defined**).

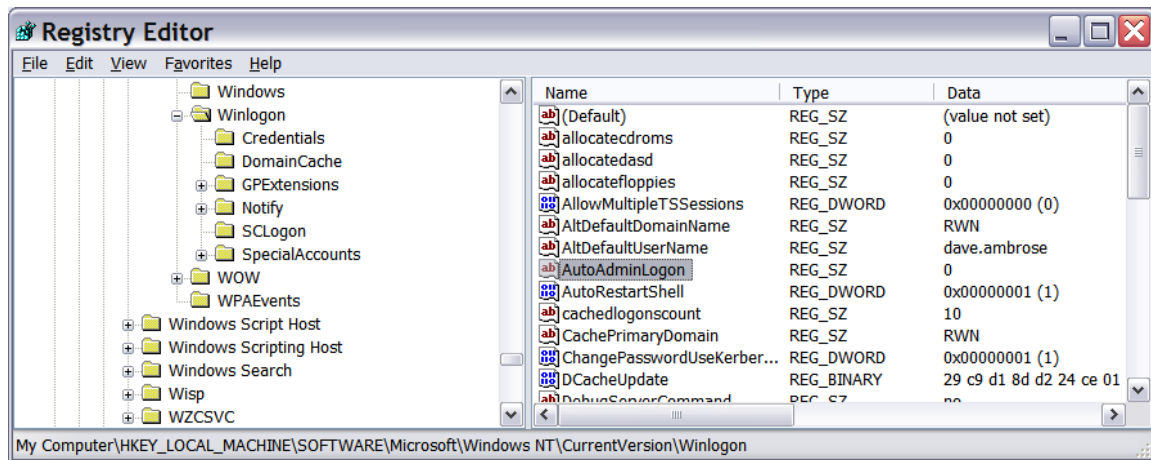
Installing ScanMaster on the NCR RP50 (7611) using POSReady 7



Next double click the User Rights Assignment under Security Settings and double click “**Log on as a service**”, click Add User or Group, type in “Administrator” and click the Check Names button. Click Ok, click Apply (click Ok if an error occurs), click Ok and close secpol.msc.

Installing ScanMaster on the NCR RP50 (7611) using POSReady 7

Disable auto login. Run Regedit and go to
HKEY_LOCAL_MACHINE\Software\Microsoft\Windows
NT\CurrentVersion\Winlogon and set the AutoAdminLogon value to 0.



Log off and log back in as the Administrator (No password required yet).

Setting the Administrator's password.

Click Start and open Control Panel. Change View by: to small icons
Select "User Accounts".

Click "Create a password for your account".

Make the password the same as the administrator password on the Server.

Enter hint if so desired. Click Create password. **Do not forget this password or you may have to reinstall Windows 7!**

You should be back at the "Make changes to your user account" screen.

User Account Control (UAC) is off by default.

Close the Control Panel.

Reboot and log back in as the Administrator with the new password.

Click Start and open Control Panel. Change View by: to small icons if not already set.

Under Windows Update.

Click Change Settings.

Click the drop down arrow and select Never check for updates.

Click OK.

Return to the main Control Panel.

Click Power Options.

Click the down arrow by the Show additional plans.

Click High Performance.

Installing ScanMaster on the NCR RP50 (7611) using POSReady 7

Optional – Default settings will cause the monitor to turn off after 15 minutes of inactivity. You can change this by going to Change Plan Setting and adjust display options.

Return to the main Control Panel.

Click Network and Sharing Center.

Click Change adaptor settings.

Right click the Local Area connection and click Properties.

Click the Configure button, verify/set that all options under Power Management are unchecked.

Click OK.

Right click the Local Area connection and click Properties.

Highlight Internet Protocol Version 4 and click Properties. Fill in the IP address information. Click OK. Click Close.

Return to the Network and Sharing Center.

Click Change advanced sharing settings. Ensure that the option Turn on network discovery and Turn on file and printer sharing are turned on. Scroll down and turn off Password protected sharing. Do this for both the Home or Work and Public sections.

Click Save changes.

Return to the Control Panel.

Click Date and Time.

Uncheck Notify me when the clock changes

Return to the Control Panel.

Click Action Center.

Change Action Center settings.

Uncheck any items, i.e. Windows Update, Firewall, etc. that you don't want Windows to pop notification messages. (Recommended to uncheck all)

Click OK.

Return to Control Panel.

Click Windows Firewall.

Click Turn Windows Firewall on or off.

Turn off both private and public firewall options.

Click Ok.

Return to Control Panel.

Click Display.

Select Adjust Resolution and set to 800 X 600 on all monitors.

Click Apply.

Click to keep changes.

Click through warnings.

Click OK

Installing ScanMaster on the NCR RP50 (7611) using POSReady 7

Close the Control Panel.

If the computer name or workgroup name needs changed, click System.

Click Advanced system settings.

Under the Computer name tab, domain and workgroup settings, click Change setting. If prompted for a reboot, accept and let the system reboot to update its settings.

Note: For security reasons, you may want to delete the NCR users.

POSReady 7 should now be ready for software installation.

The NCR RP50 (7611) all-in-one touch screen design already has the Touch Driver installed (6.45) however you should uninstall and install the latest which at this time of this writing is Microchip TSHARC version 7.09.

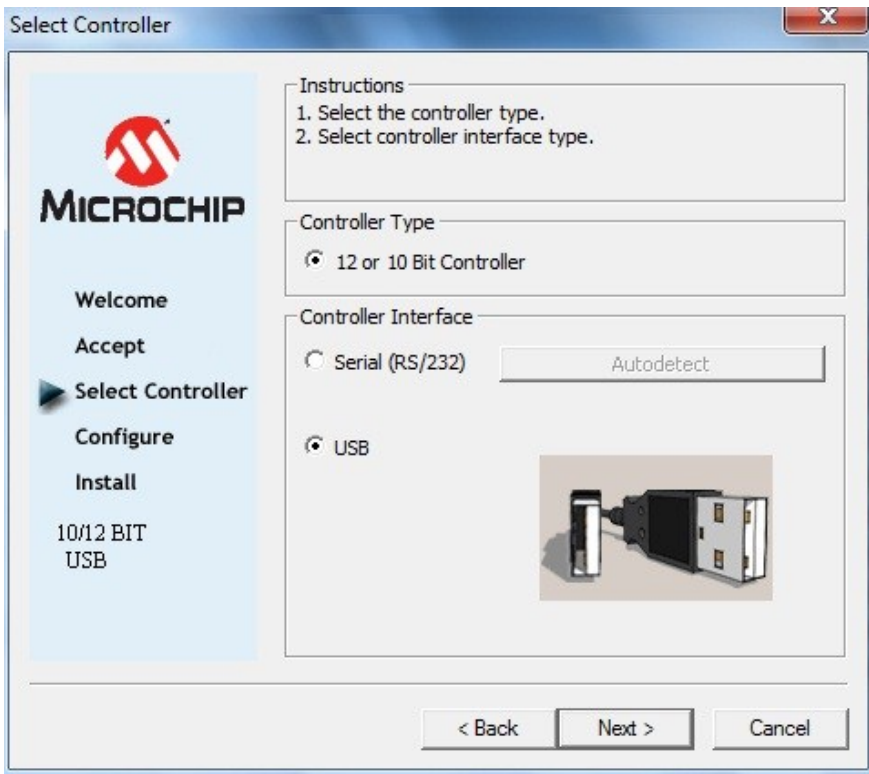


Launch the TSHARC from the start Menu.

Installing ScanMaster on the NCR RP50 (7611) using POSReady 7

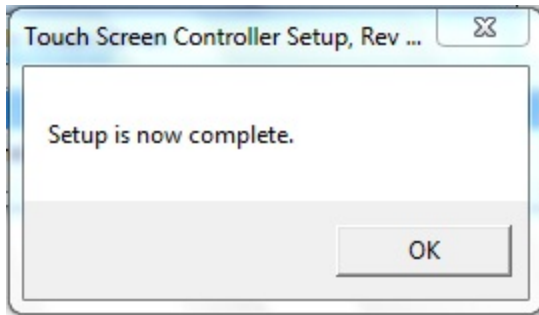


Click "I accept..." and select NEXT.



Select NEXT.

Installing ScanMaster on the NCR RP50 (7611) using POSReady 7



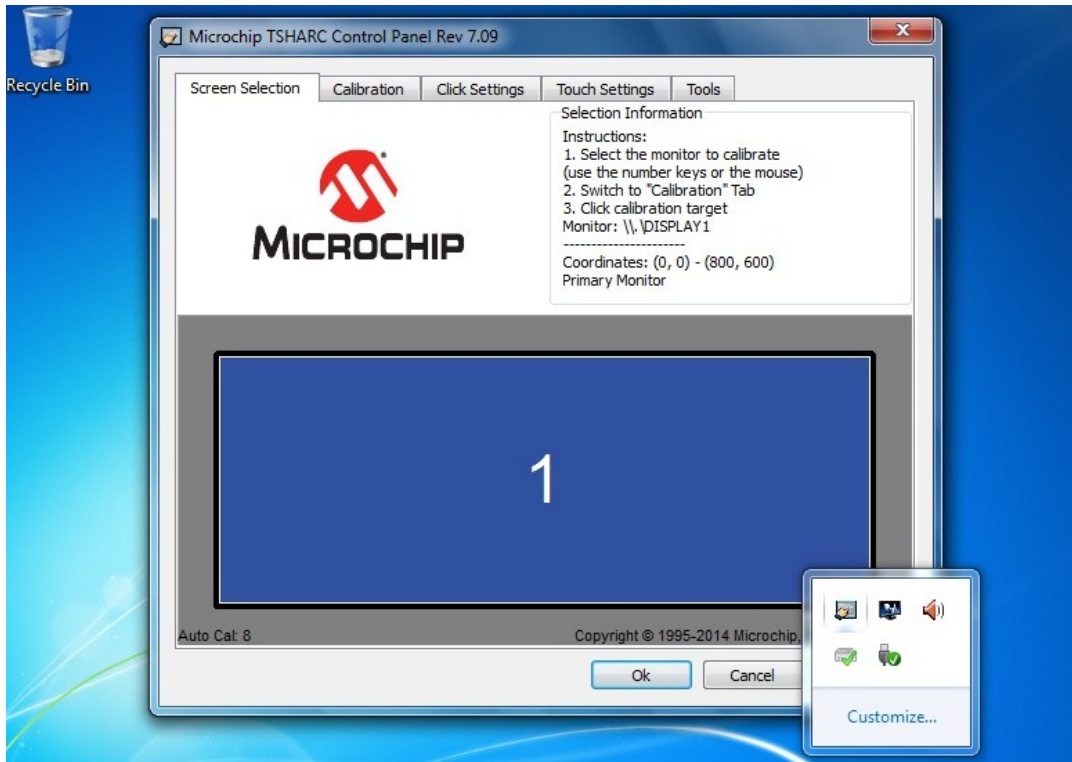
Select OK.



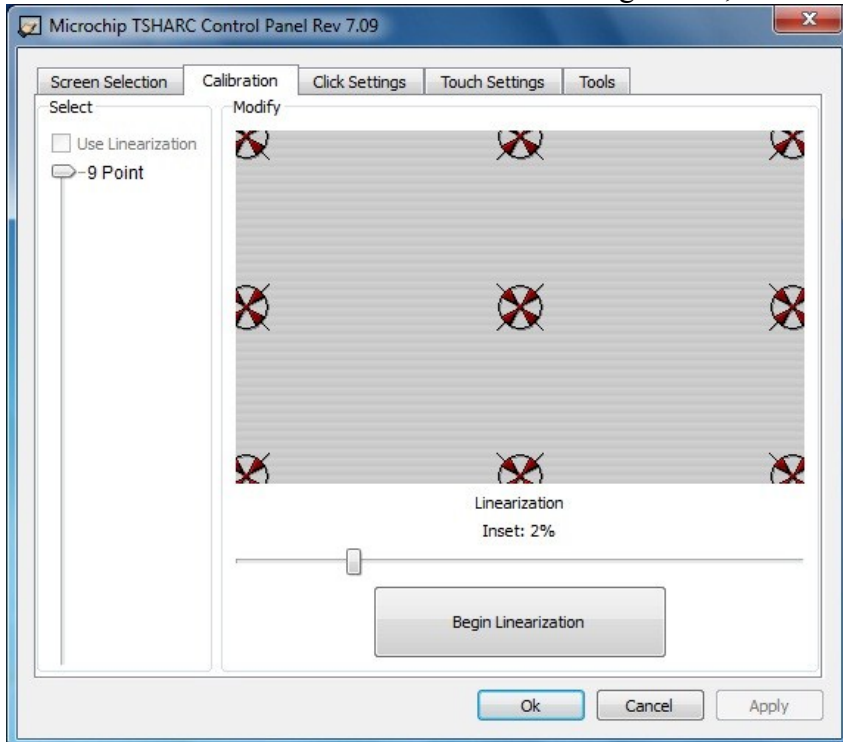
Select FINISH.

Installing ScanMaster on the NCR RP50 (7611) using POSReady 7

On the right side of the Taskbar select and double click the Display Control Panel icon and select the monitor to be calibrated. If using 2 monitors it will be necessary to calibrate both.

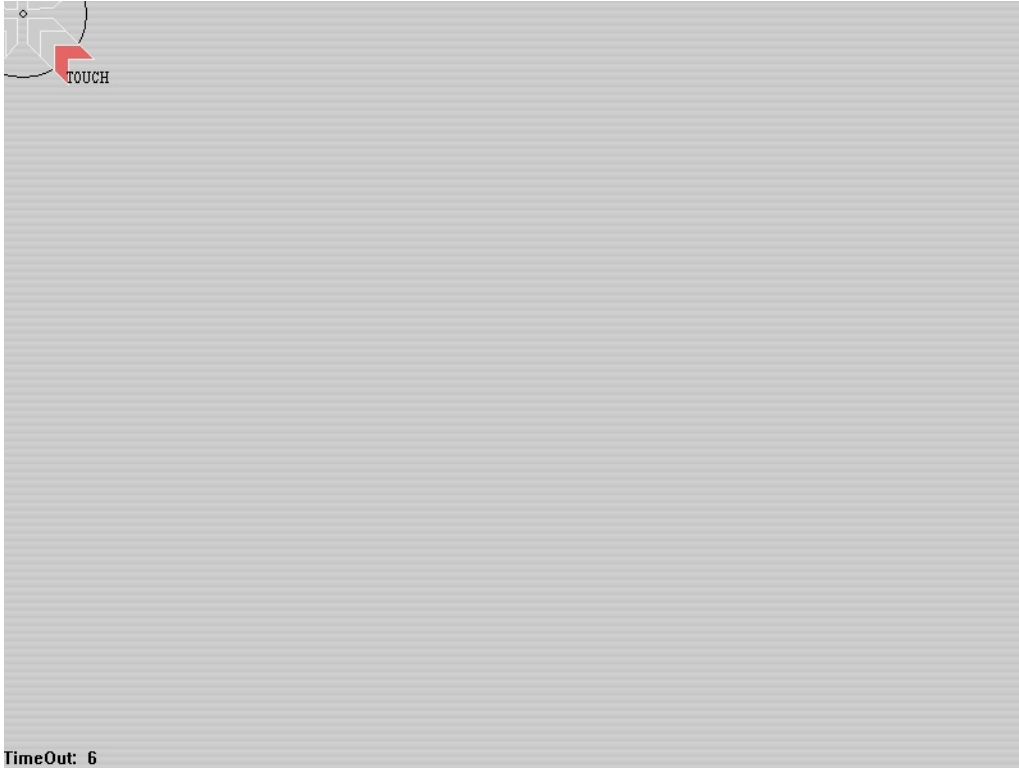


Click on the Calibration tab and on the following screen, Click Begin Linearization



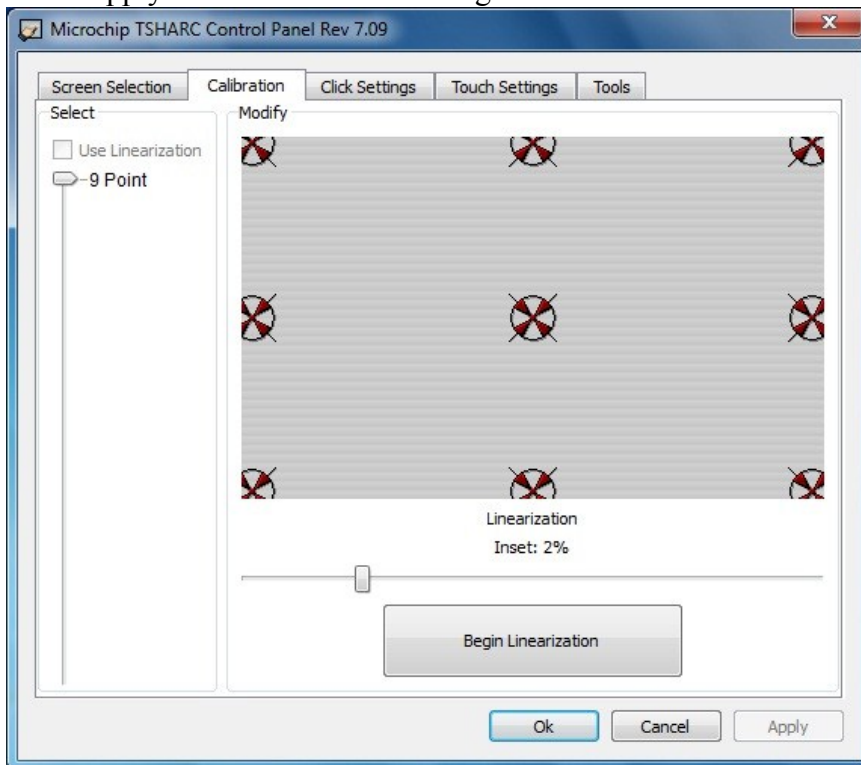
Installing ScanMaster on the NCR RP50 (7611) using POSReady 7

Follow the screen instructions on the following page. BE SURE NOT TO TOUCH THE SCREEN when instructed not to.



TimeOut: 6

Click Apply and OK on the following screen.



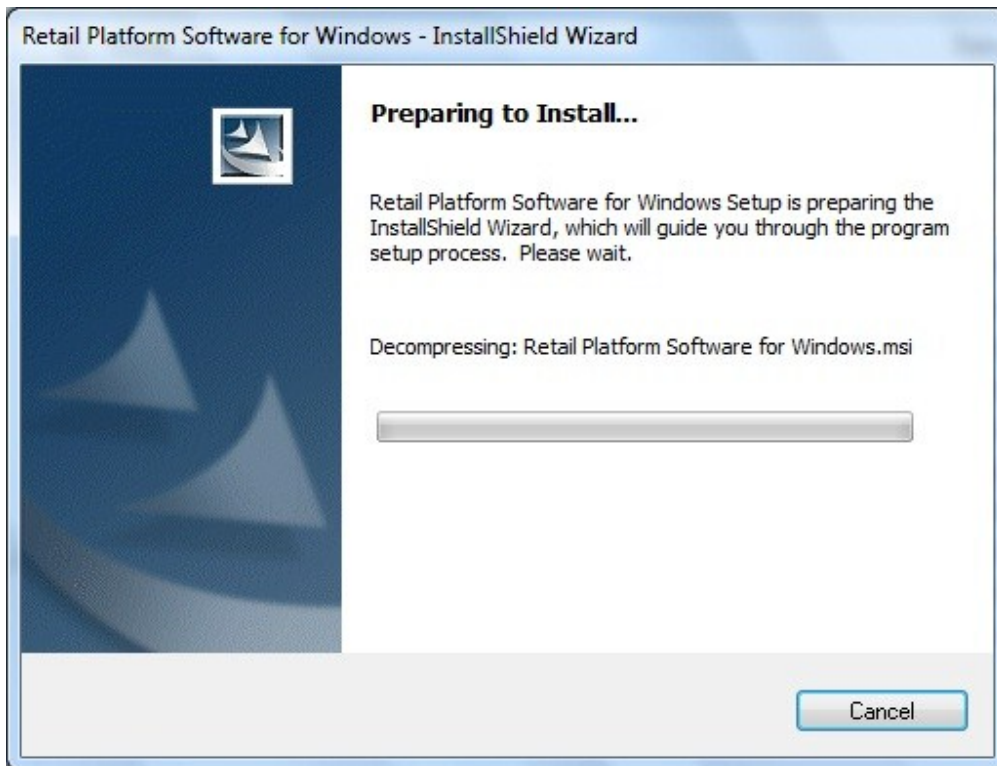
Screen calibration is completed.

Install NCR Retail Platform Software for Windows (OPOS).

Obtain the Retail Platform Software for Windows version 4051.zip from the Retalix Channel Partners website. Create the folder RPSW under C:\Install\Drivers and copy the install files to that folder. Also download the V8NCROPOS.REG and place in the RPSW folder as well.

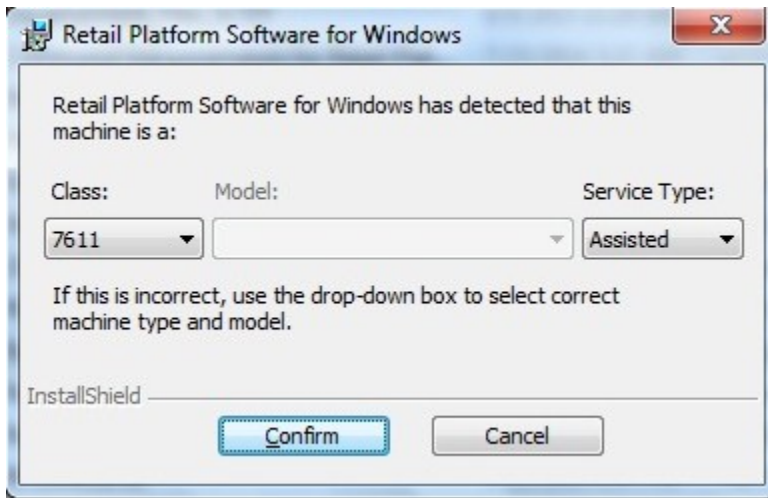
Right Click the Retail Platform Software for Windows exe and Click Run as administrator.

The installation starts.

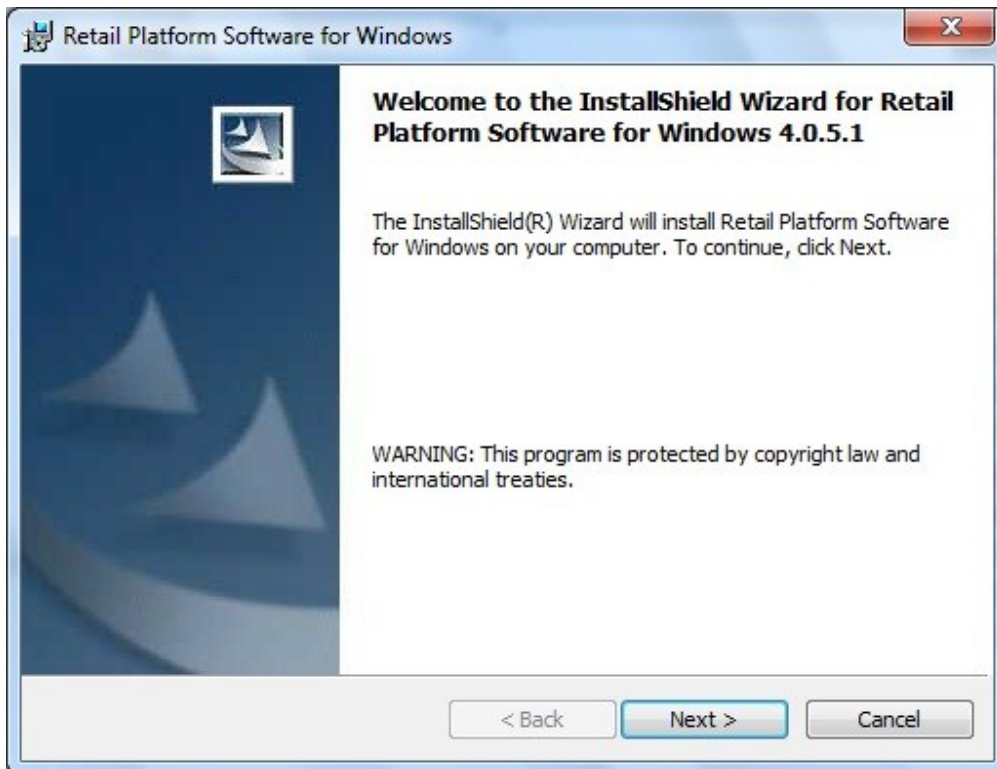


Installing ScanMaster on the NCR RP50 (7611) using POSReady 7

The machine type is detected. Click Confirm (don't change the other drop downs).

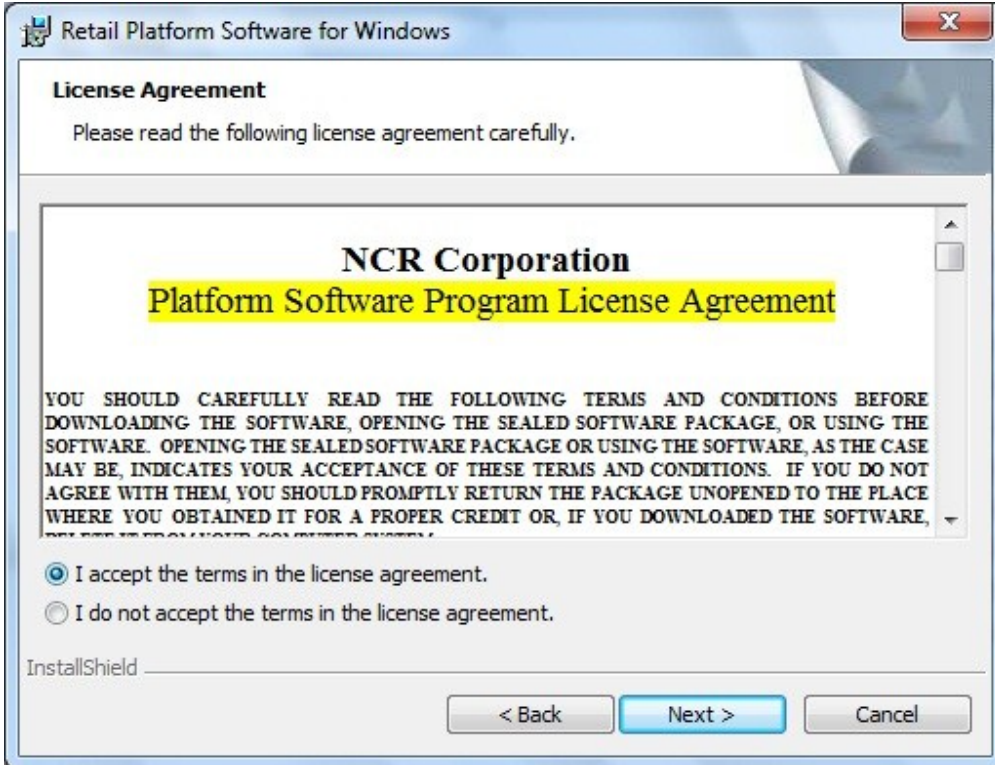


Click Next at the Welcome screen.

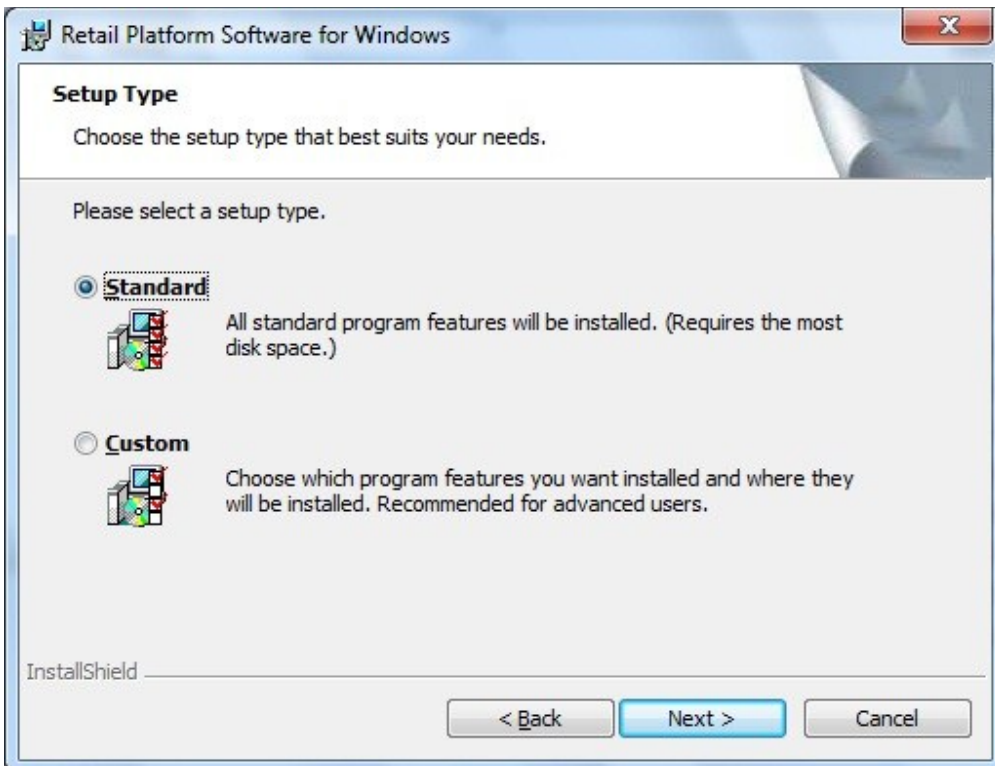


Installing ScanMaster on the NCR RP50 (7611) using POSReady 7

Click the I accept the terms box and click Next.

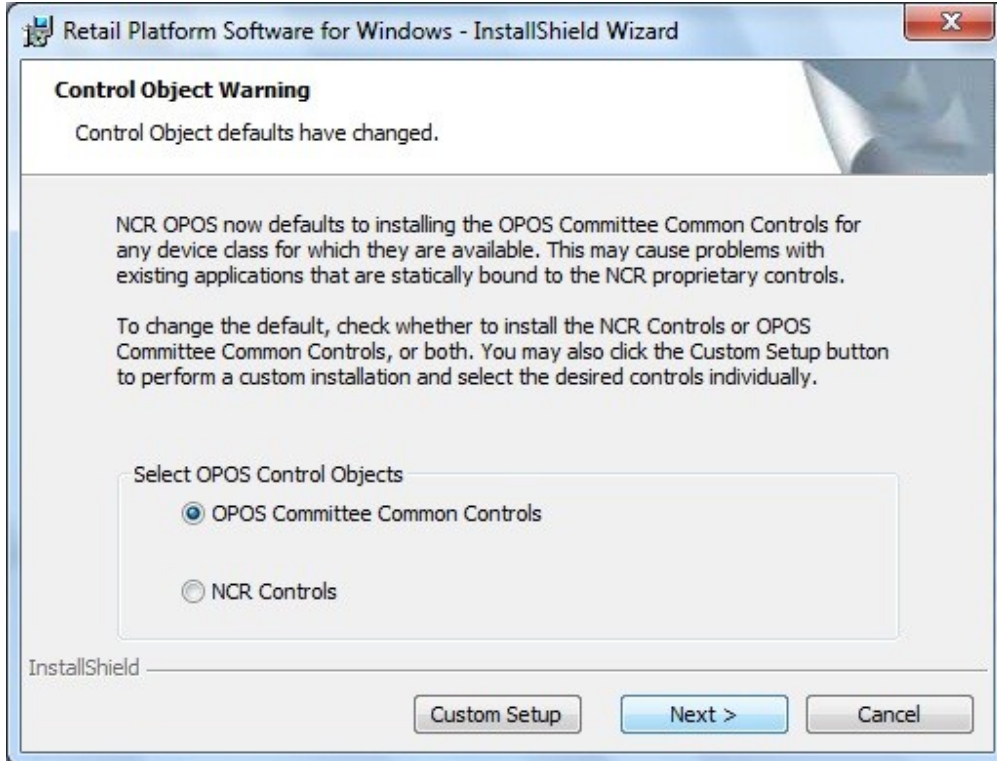


At the Setup Type screen select Standard and Click Next.

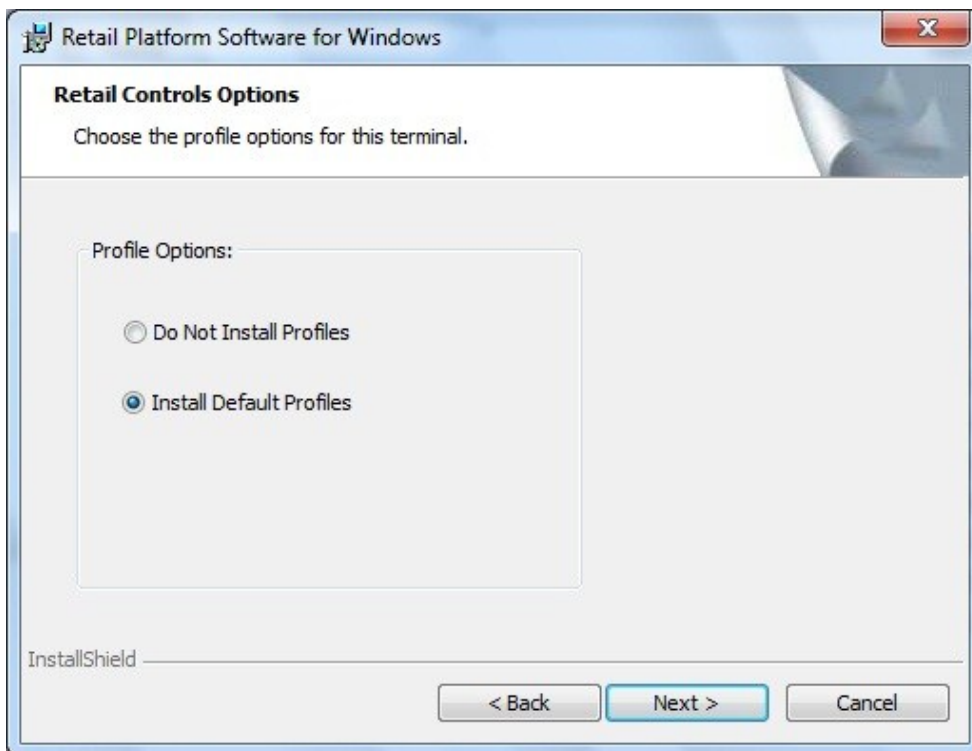


Installing ScanMaster on the NCR RP50 (7611) using POSReady 7

At the Control Object Warning screen select OPOS Committee Common Controls and click Next.

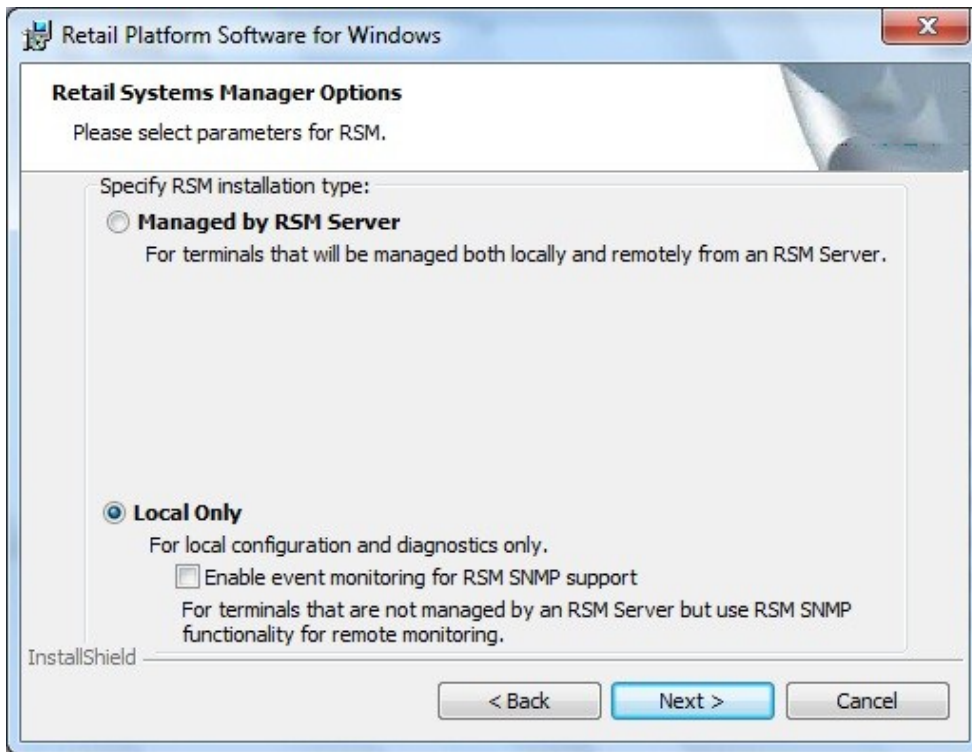


At the Retail Control Options screen select Install Default Profiles and click Next.

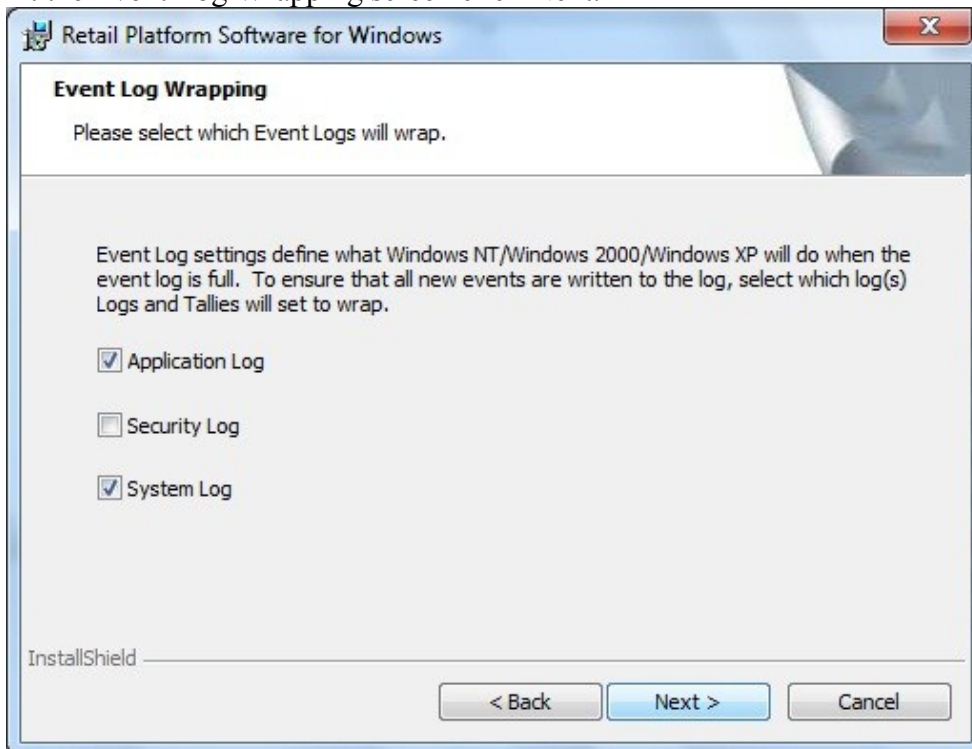


Installing ScanMaster on the NCR RP50 (7611) using POSReady 7

At the Retail Systems Manager Options screen select Local Only and click Next unless you are using a RSM server for remote management, in which case choose Managed by RSM Server and answer the additional questions on the screen.



At the Event Log Wrapping screen click Next.

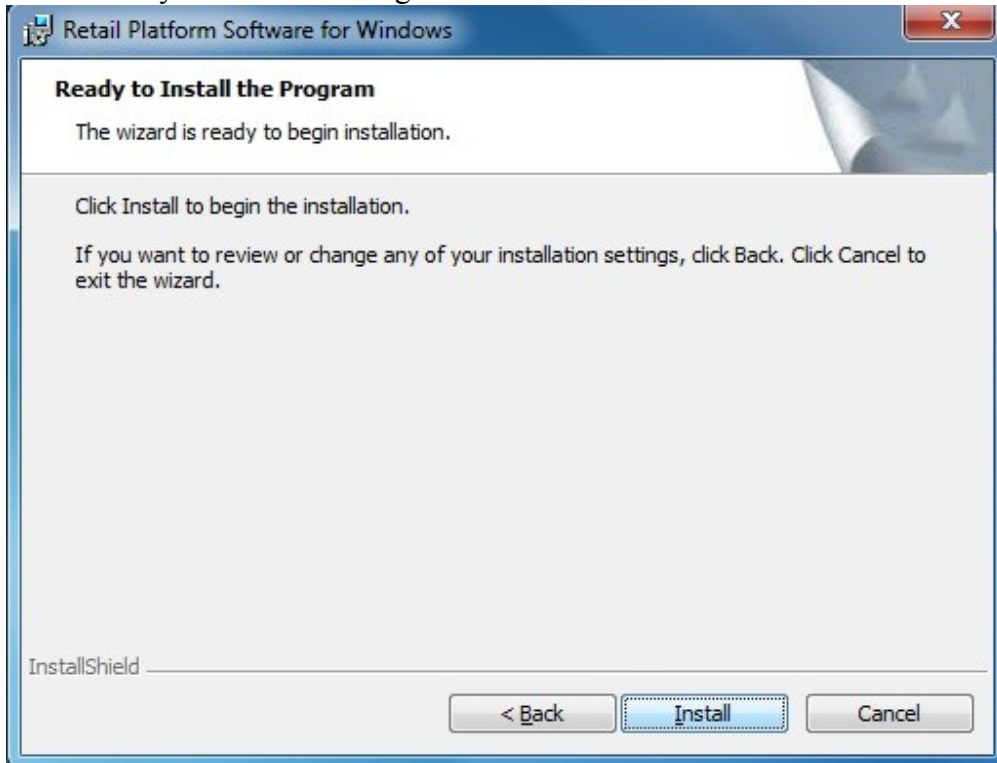


Installing ScanMaster on the NCR RP50 (7611) using POSReady 7

At the Security Setting Options screen select Modify security settings and click Next.

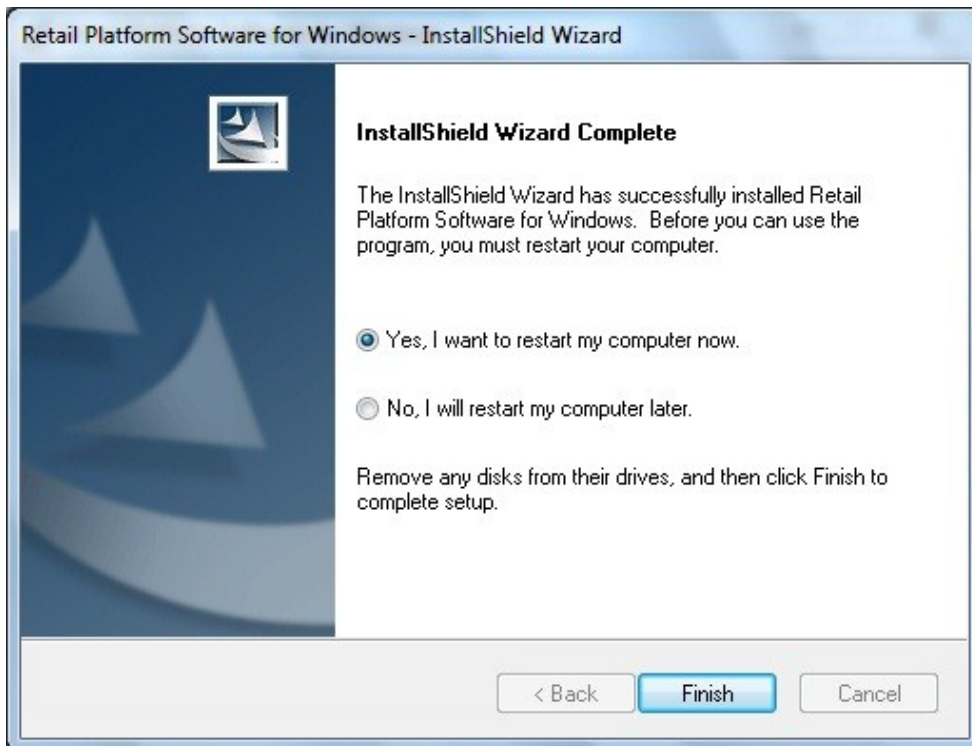
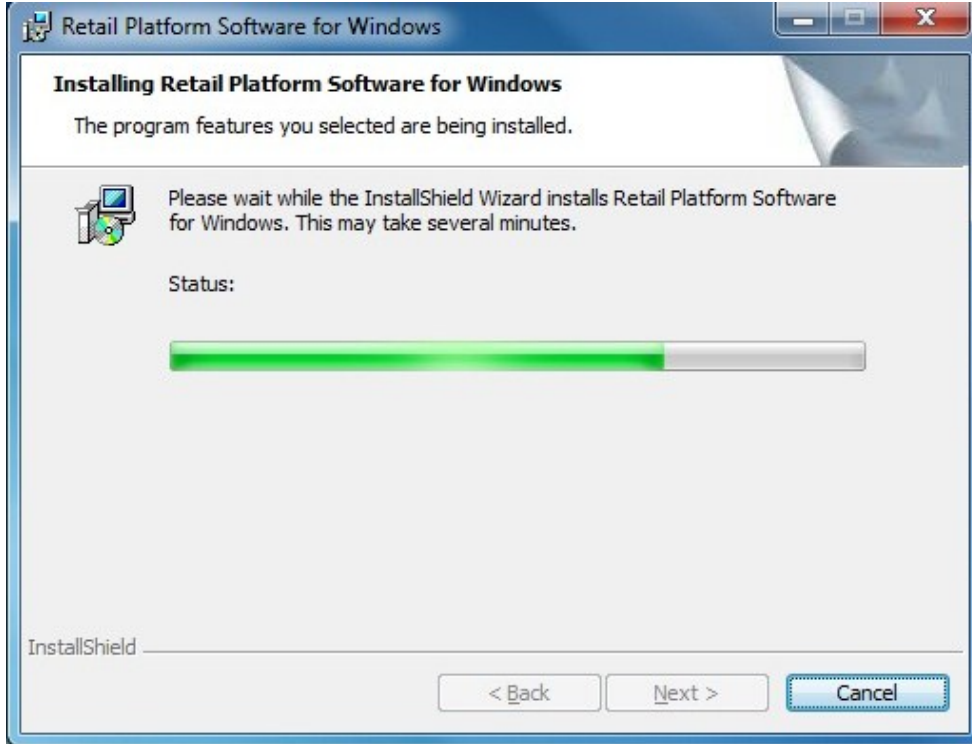


At the Ready to Install the Program screen click Install.



Installing ScanMaster on the NCR RP50 (7611) using POSReady 7

RSM is installed.



Click Finish.

Installing ScanMaster on the NCR RP50 (7611) using POSReady 7

At this point attach the USB devices, i.e., POS printer, scanner. The Cash Drawer is to be plugged into the Cash Drawer port on the RP50 (RP7611) motherboard regardless of which printer is used.

At the restart message box click Yes.
At the completed screen click Finish.

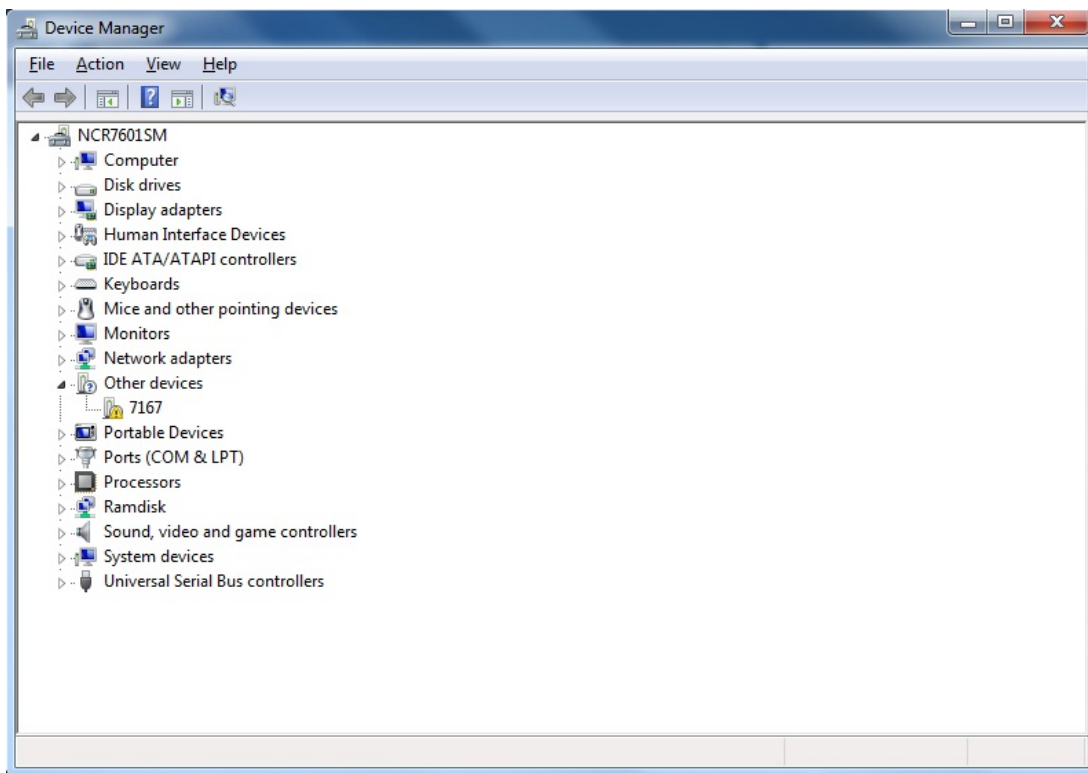
After reboot, logon as administrator.

Don't attempt to setup your devices at this point. That will be explained later in this document.

NOTE: If you ever uninstall NCR RSM(OPOS) and reinstall it will be necessary to go to the C:\Grocery folder on the POS and double click NCROPOS.reg to reinstall the correct Device Profiles. The Device settings will also need redone to match the attached devices.

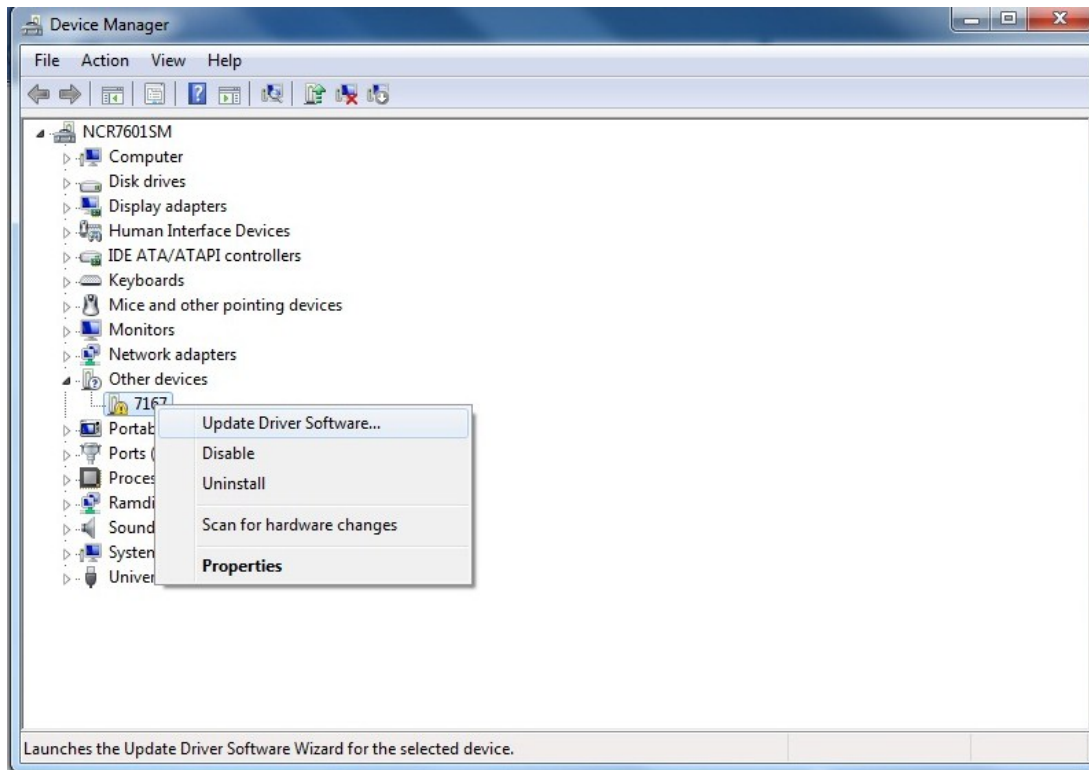
Installing NCR printer drivers (IONetworks). If you are using an Epson TM-6000III/IV USB printer, install the Epson OPOS and set up the printer via the Epson utility.

Click Start and go to the Control Panel. Click Device Manager.

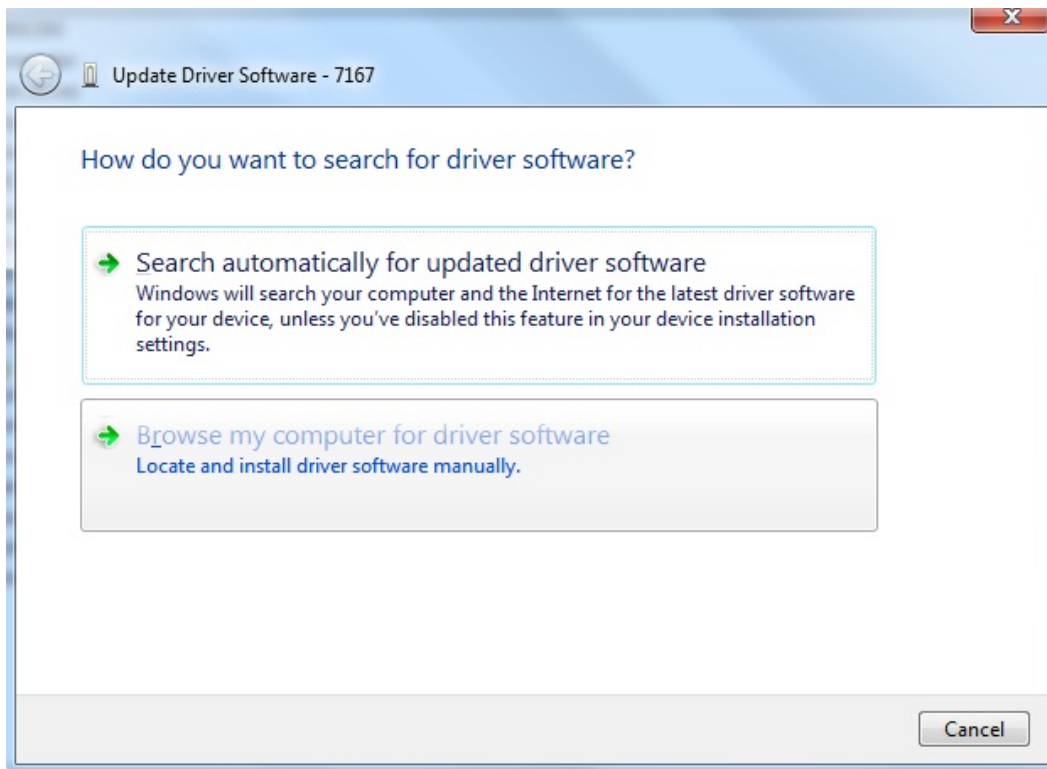


Under Other devices right click the device, i.e., 7167, with the yellow exclamation and click Update Driver Software.

Installing ScanMaster on the NCR RP50 (7611) using POSReady 7

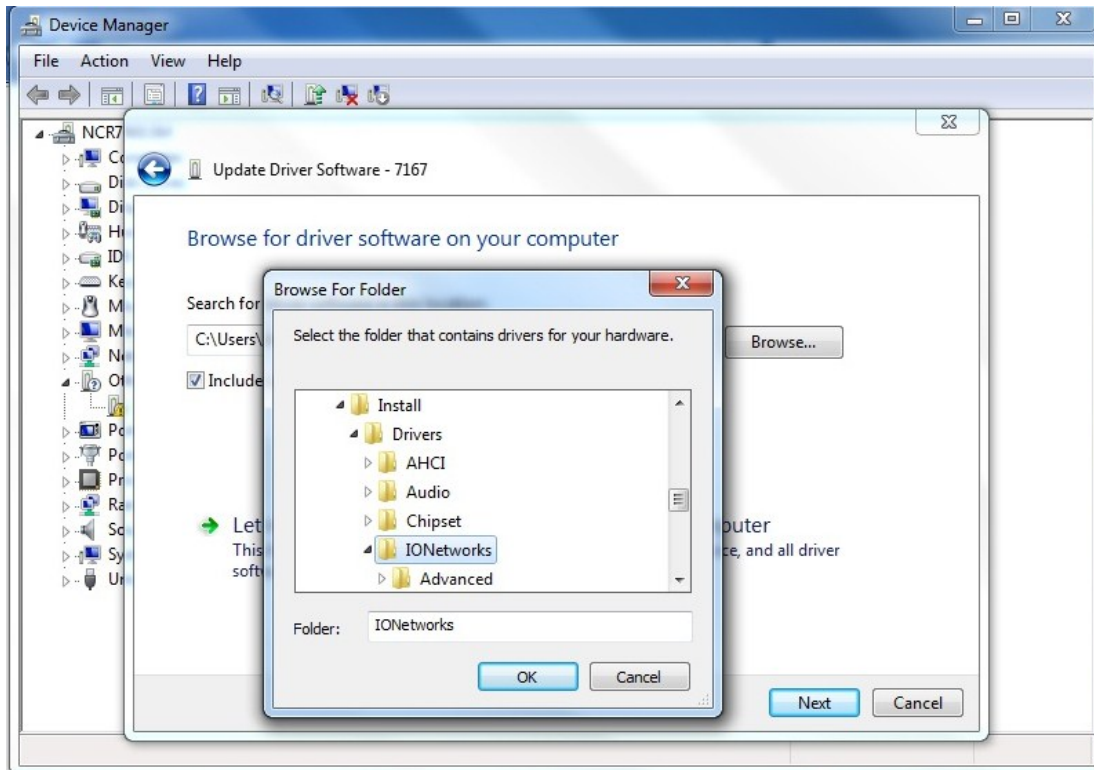


Click Browse my computer for driver software.

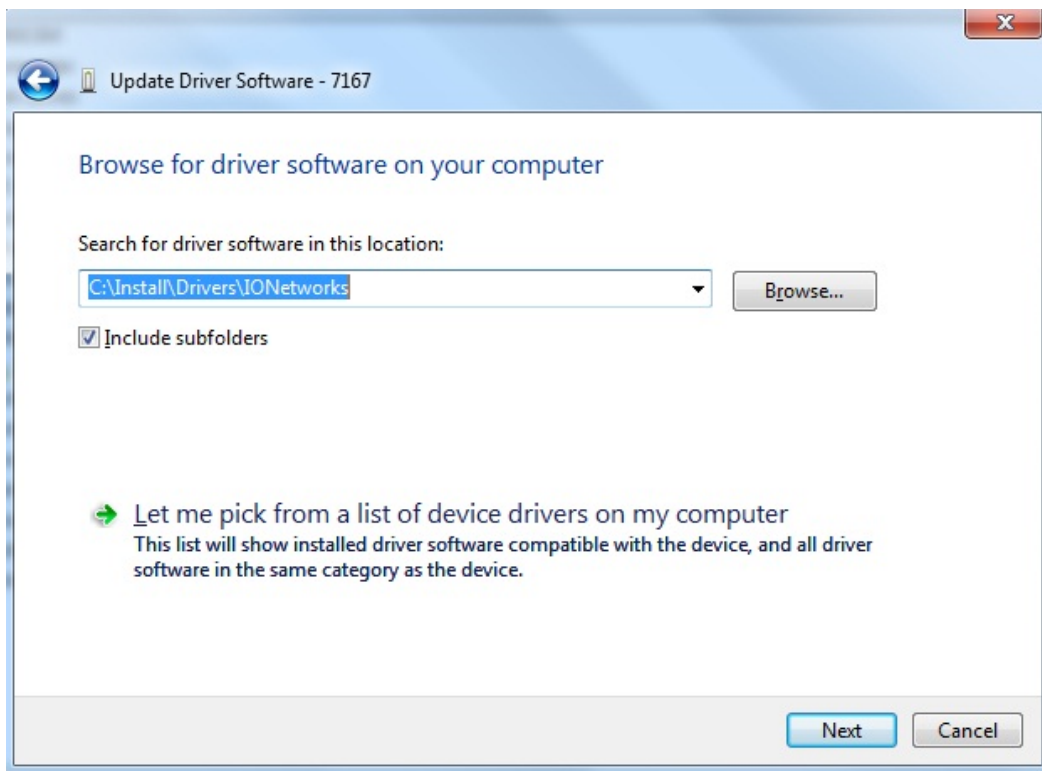


Browse to C:\Install\Drivers\IONetworks and click OK.

Installing ScanMaster on the NCR RP50 (7611) using POSReady 7

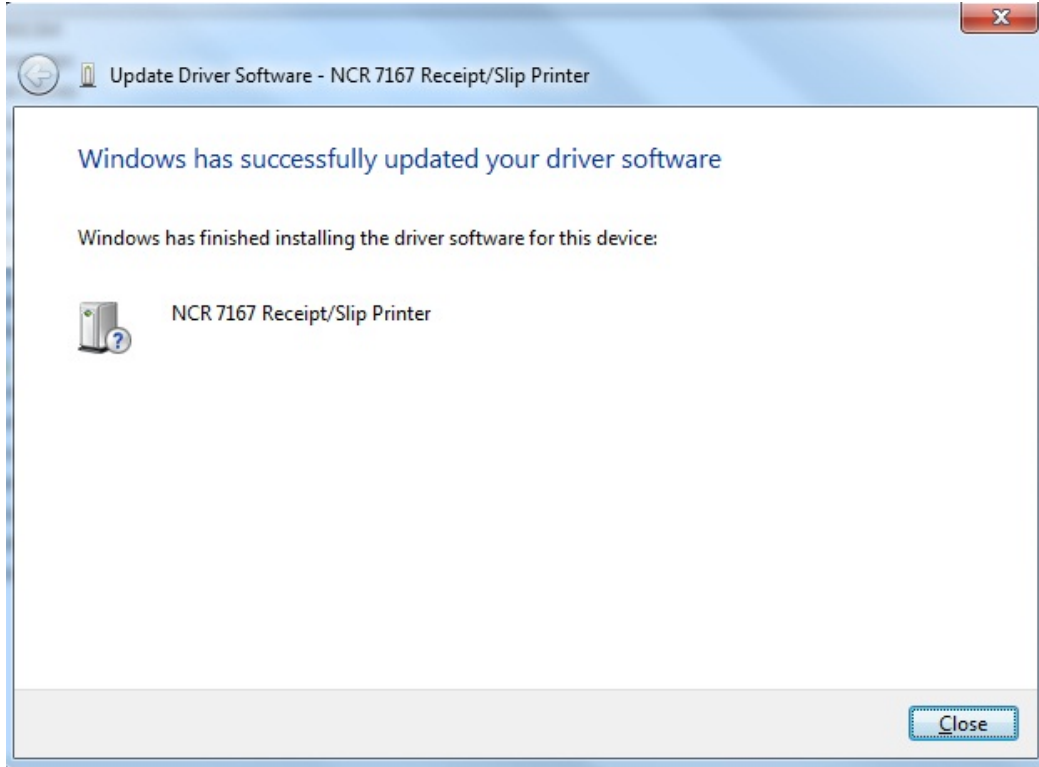


Click Next at the following screen.

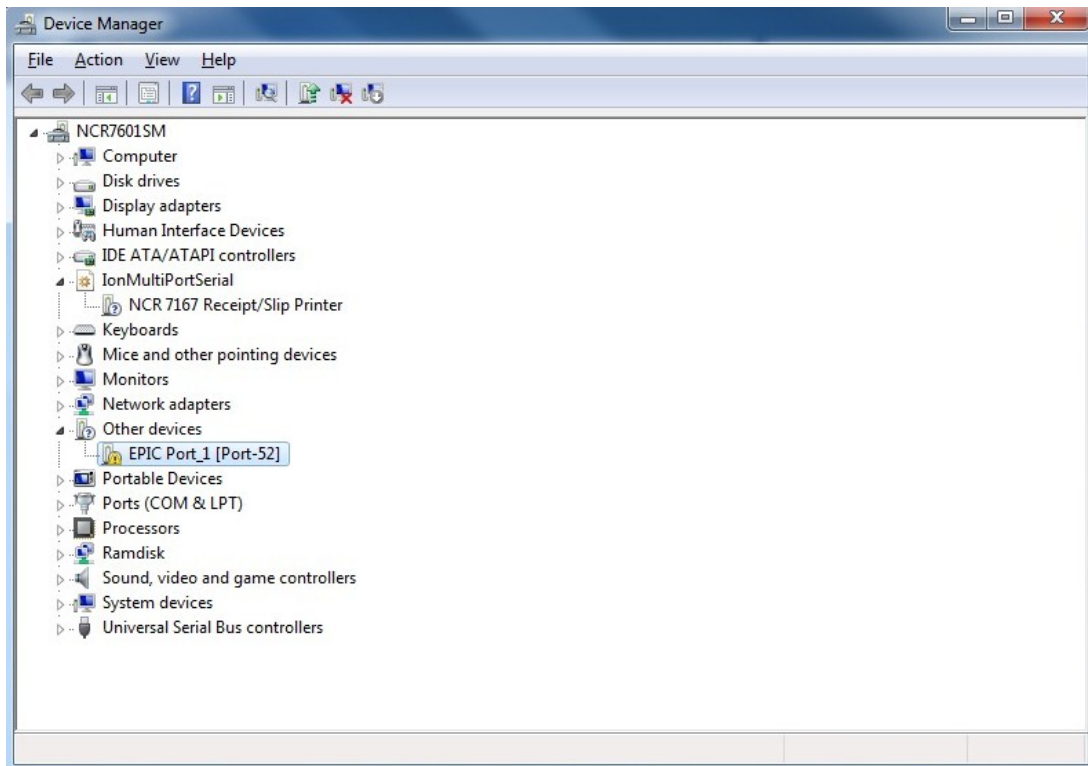


Installing ScanMaster on the NCR RP50 (7611) using POSReady 7

At the following screen click Close.



Go back to Device Manager and repeat the same steps for the EPIC Port device.



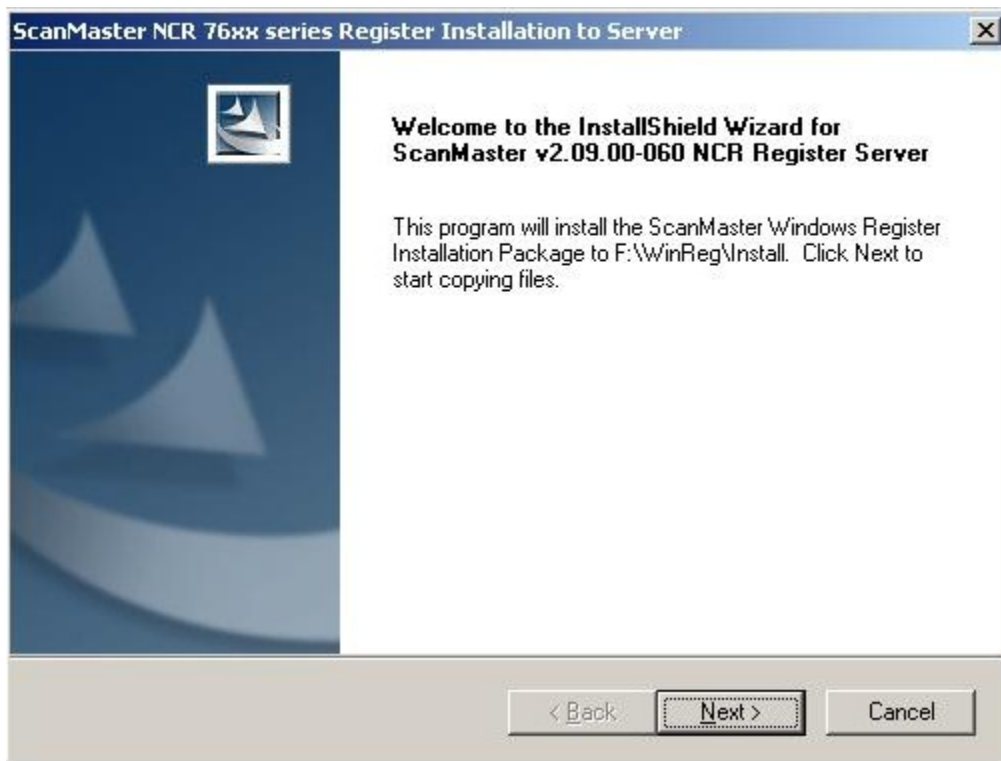
Installing ScanMaster on the NCR RP50 (7611) using POSReady 7

Close Device Manager and Control Panel.

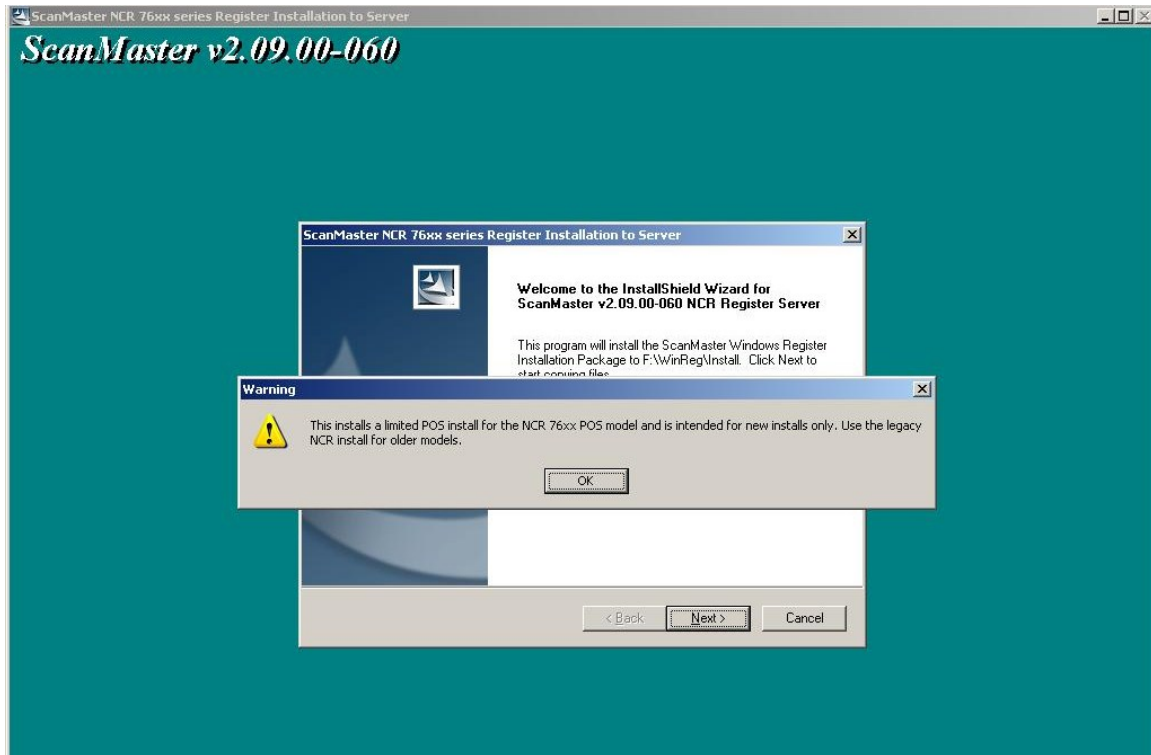
The POS is now ready for the installation of Pervasive Workgroup (See ScanMaster Installation Guide). Once Pervasive is installed go to the ScanMaster server and install the new NCR POS installation to the server. Install v2.09.00-060 by obtain the new NCR limited full install patch files from the Retalix Channel Partner website and also the latest patch. Starting with v2.10.00-050 the newer NCR POS models will be incorporated into an all-in-one NCR/IBM/Fujitsu/HP install. Pre 76xx models will continue to be installed with the Legacy NCR POS install.

Once the new install is on the server, install the POS per the instructions in the ScanMaster installation guide. This install is limited to just a new NCR install so the following screens are somewhat different than the standard install screens. It will also install a set of RSM device profiles in addition to some of the profiles installed by the NCR RSM application.

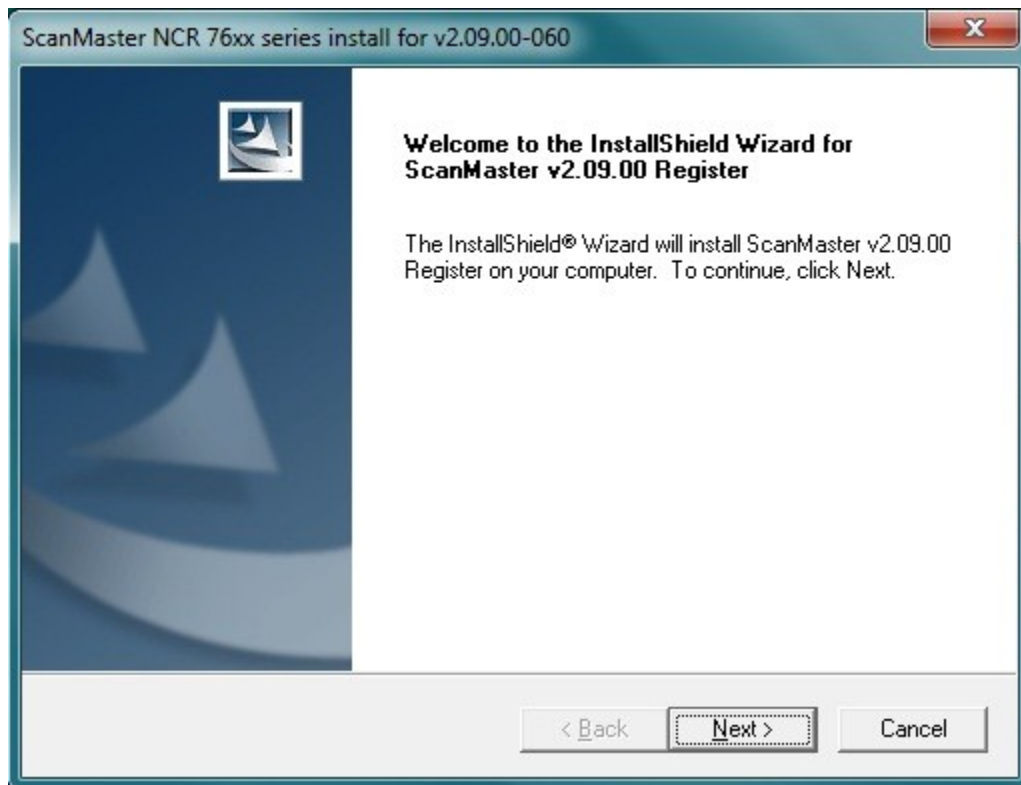
Install NCR register install to server screens:



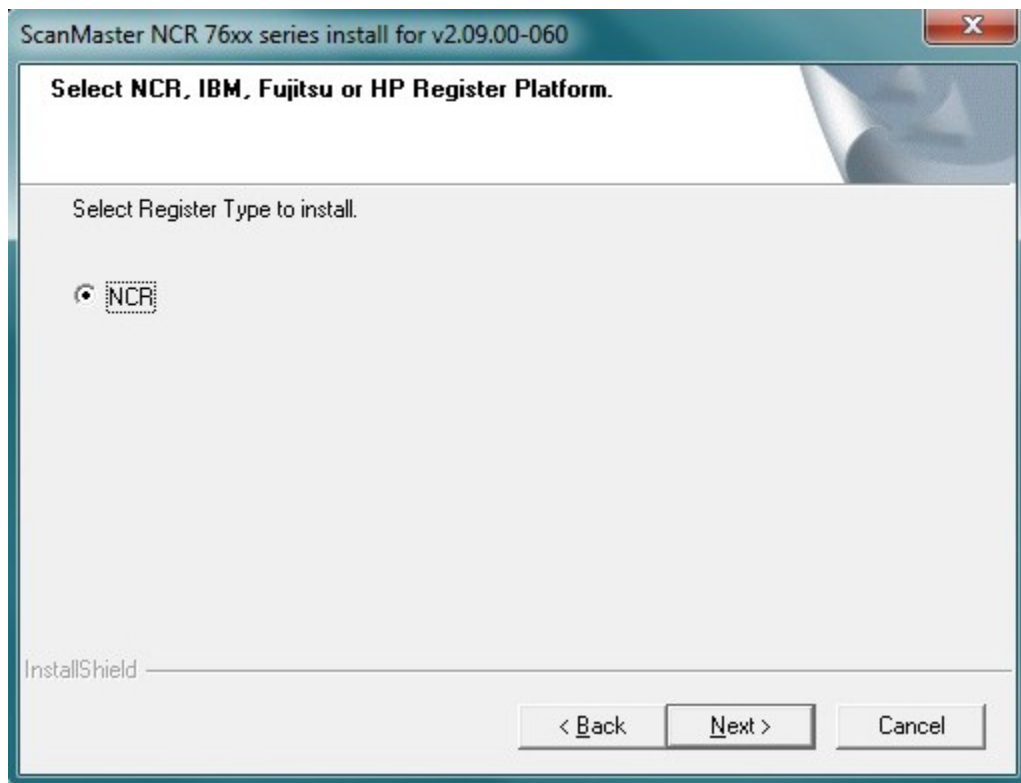
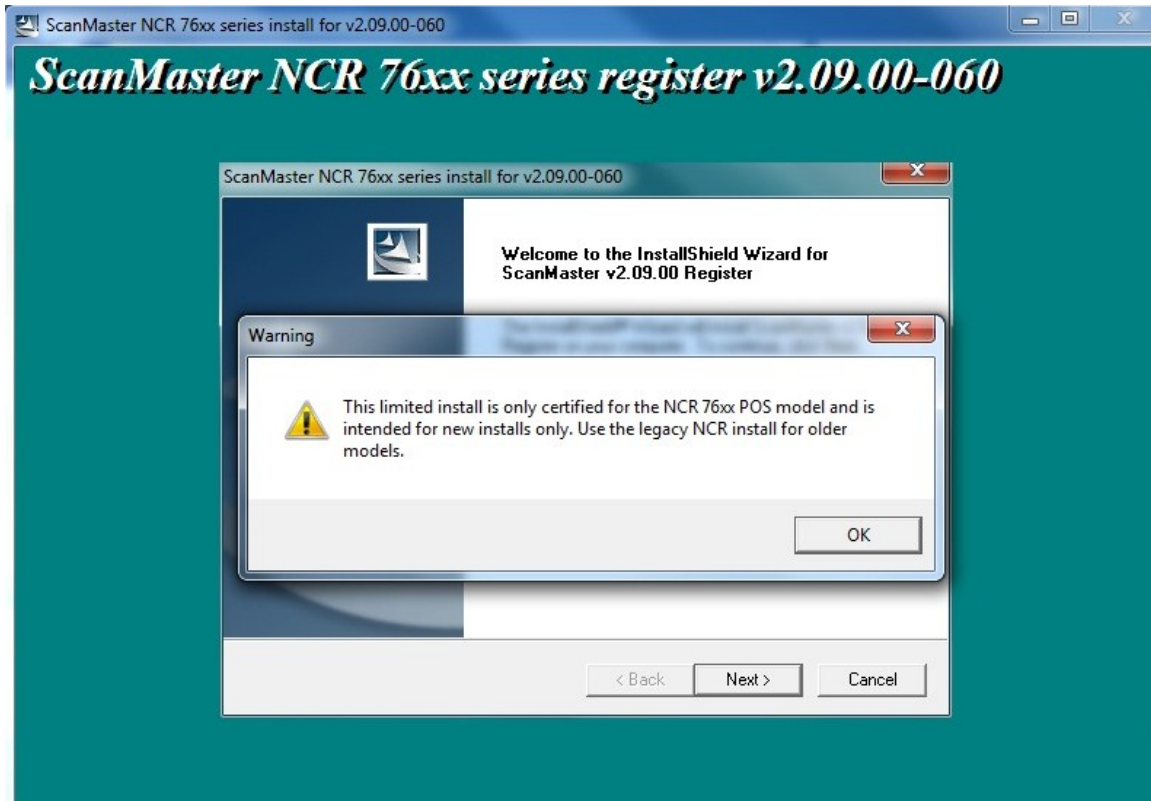
Installing ScanMaster on the NCR RP50 (7611) using POSReady 7



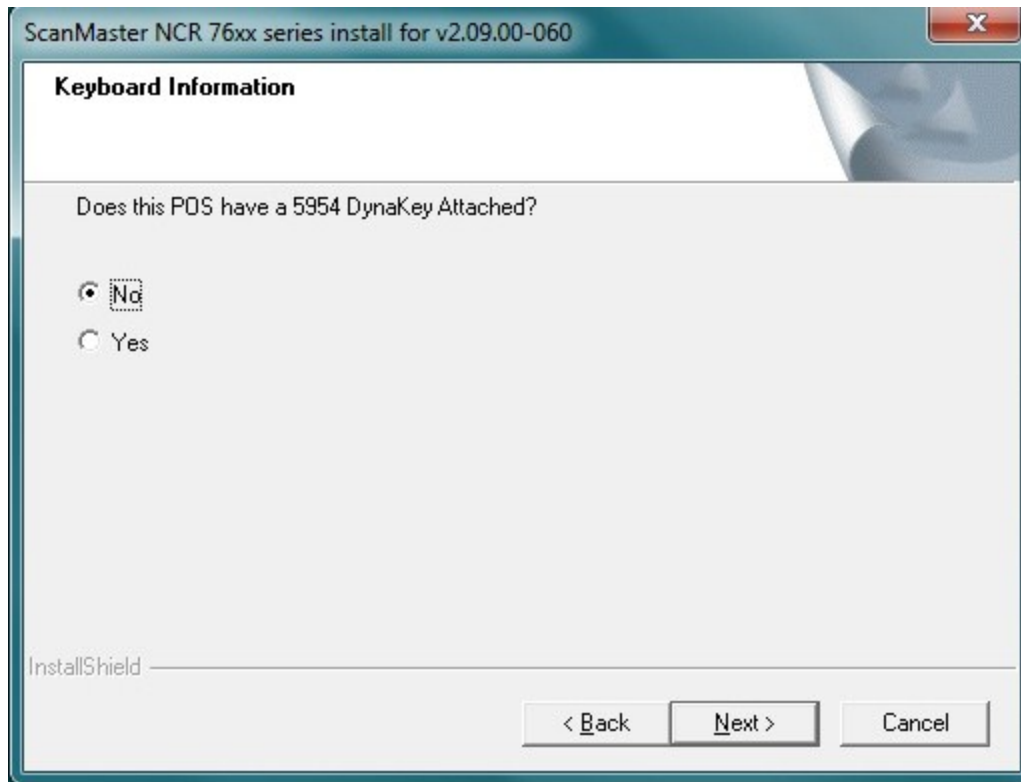
POS install screens:



Installing ScanMaster on the NCR RP50 (7611) using POSReady 7



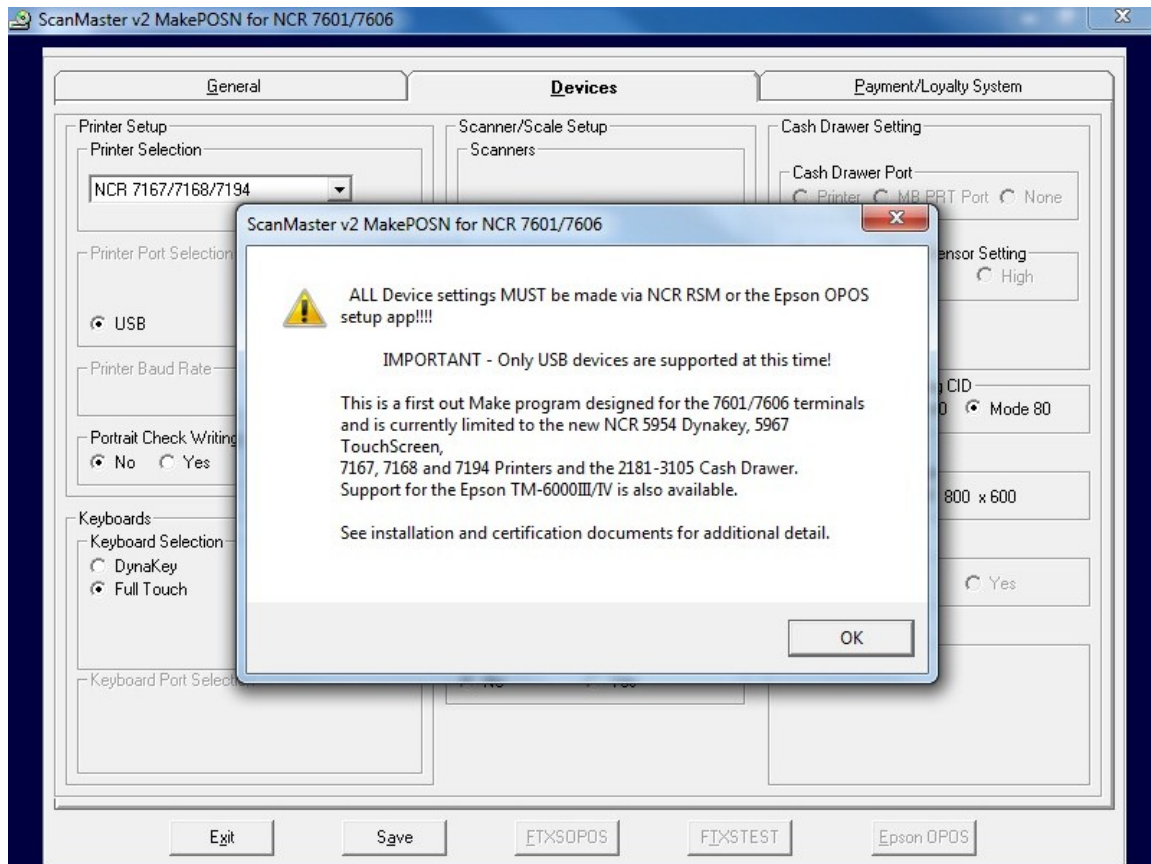
Installing ScanMaster on the NCR RP50 (7611) using POSReady 7



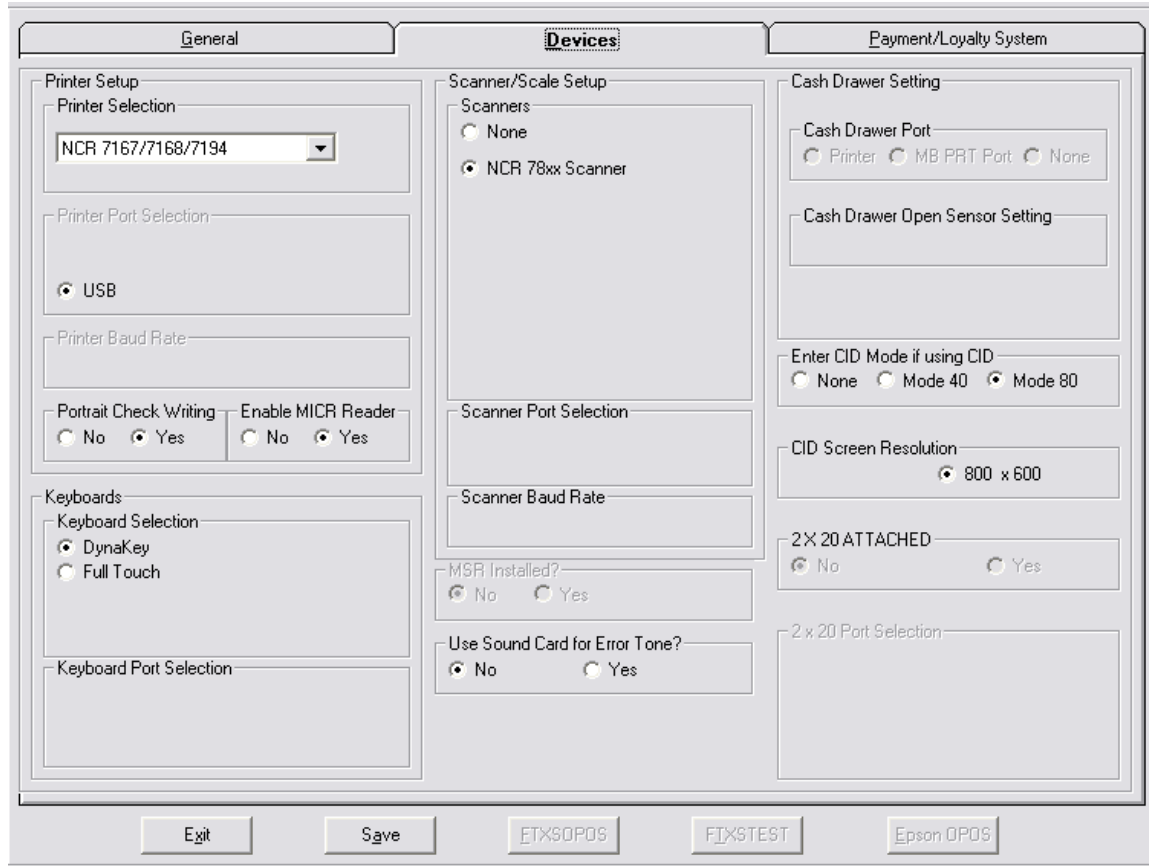
Upon completion of the POS install, a new MakePOSN program will run. Set devices as normal. Note: This is a limited, first out version of the program and is only set for those devices certified at the time of this release.

Note: Manually edit `c:\regstart.dat` and add / TOUCHSND to support beeps on touch.

Installing ScanMaster on the NCR RP50 (7611) using POSReady 7



Installing ScanMaster on the NCR RP50 (7611) using POSReady 7



Note: This is just a sample screen shot and your selections should match your install options and what devices are attached. The MakePOSN program should only be run after the Device Profiles are installed. The ScanMaster install will have installed the Device Profiles prior to running the MakePOSN program.

Once the POS is installed the ScanMaster application should run. The POS application will most likely come up with a device error. This is expected. Close the ScanMaster POS application and run the NCR RSM application by double clicking the RSM LE icon on the desktop.

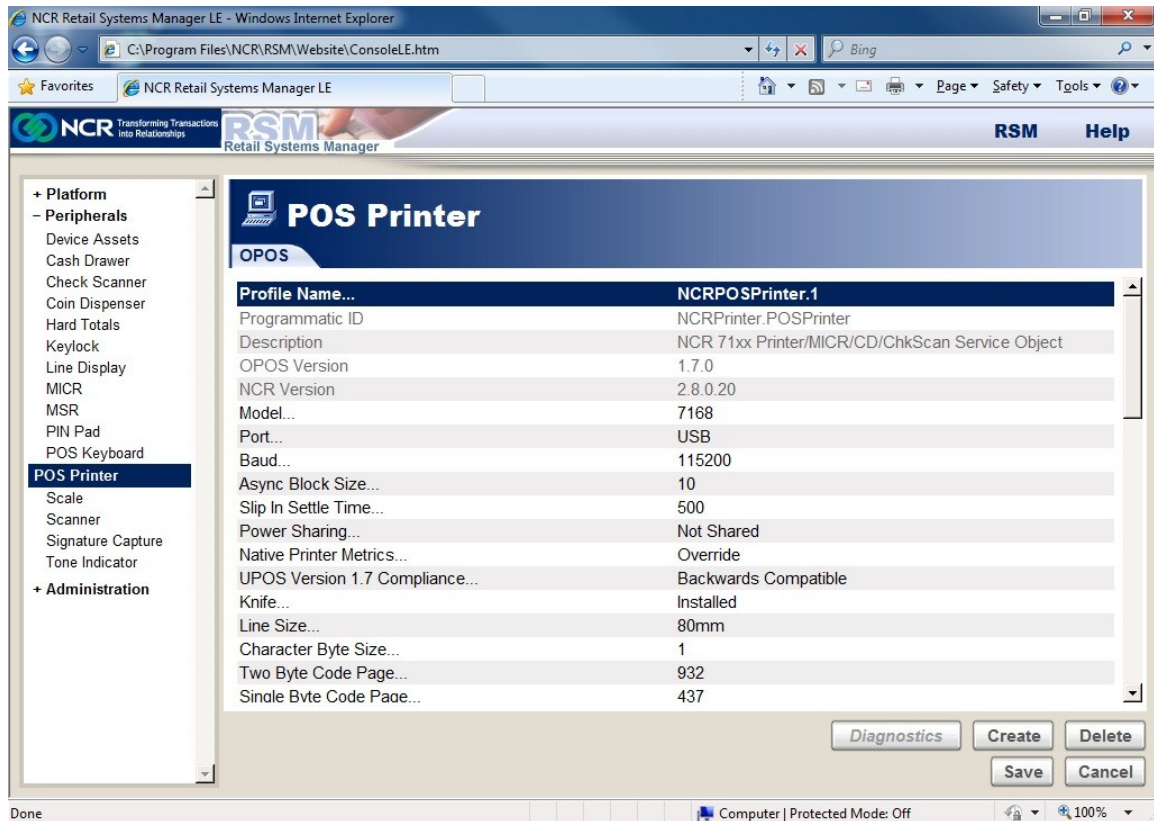
After completion of the ScanMaster POS install go back into Control Panel, Action Center and uncheck all of the notification options.

Setup Devices:

The following devices profiles were installed by the ScanMaster Install: NCRCashDrawer.1, NCRMICR.1, NCRPOSPrinter.1, NCRScale.7872, NCRScanner.7872 and NCRToneIndicator.1. Other profiles were installed via the RSM install but only those listed above are currently supported by ScanMaster. Changing to other profiles will cause device failures in ScanMaster.

Installing ScanMaster on the NCR RP50 (7611) using POSReady 7

Some of the above profiles should work as is, however, some profiles such as NCRPOSPrinter.1, NCRScale.7872 and NCRScanner.7872 may need changed depending on which printer or scanner/scale is attached to the POS. It is not the intention of this document to document how to use the RSM LE setup. Information on this can be found on the NCR website. That said, the device setup is fairly straight forward and the following screen provides an example on device setup.



Once you have chosen the correct profile (see choices above), you normally will only have to choose the correct Model number of your device. Always select USB as your Port. For the 7168 printer, there are some additional settings to choose single or double sided printing. If you want double sided printing go to the Two Sided Thermal Mode Option and select Double sided Automatic Split Receipt. (This requires special printer paper).

Installing ScanMaster on the NCR RP50 (7611) using POSReady 7

Following are the scan tags and sequences to program the 78xx scanners. Once the OPOS devices are setup and programmed the POS should be ready for use.

78XX Scanner programming tags:

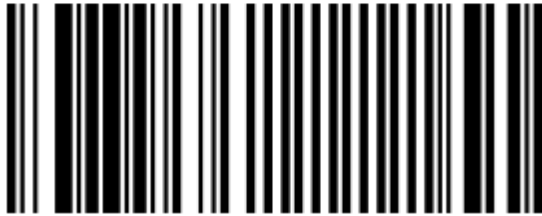
To Program the 7874 / 7878 for ScanMaster

(Start)

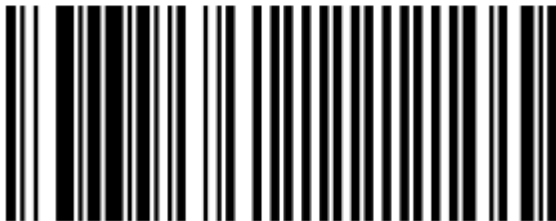
Reset



Default



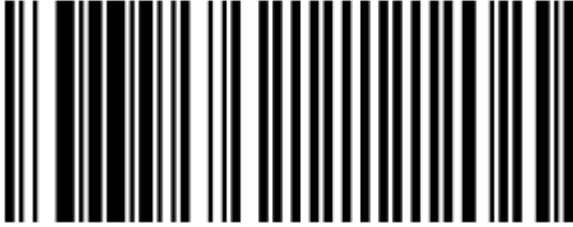
Programming Mode



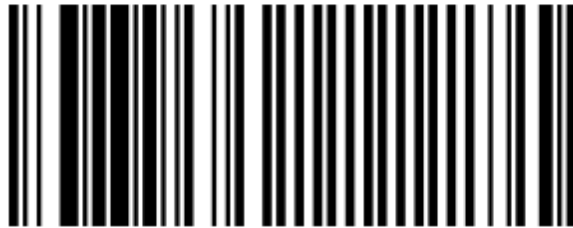
Installing ScanMaster on the NCR RP50 (7611) using POSReady 7

(Set to USB Communication Protocol)

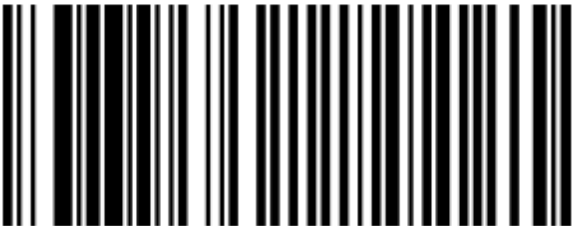
Hex 1



Hex 0



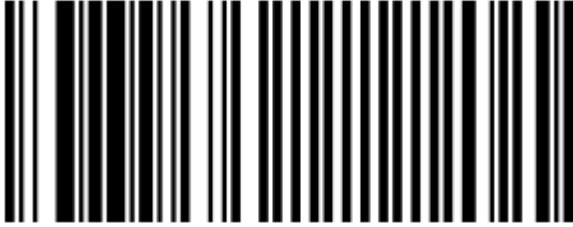
Hex D



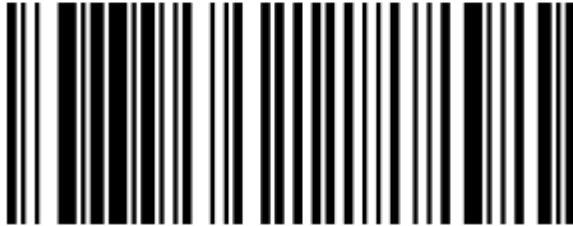
Installing ScanMaster on the NCR RP50 (7611) using POSReady 7

(Enable periodical codes)

Hex 1



Hex 3

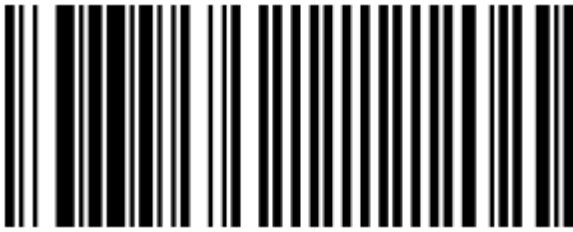


Hex E

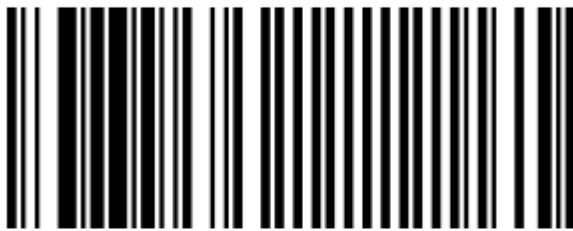


Installing ScanMaster on the NCR RP50 (7611) using POSReady 7

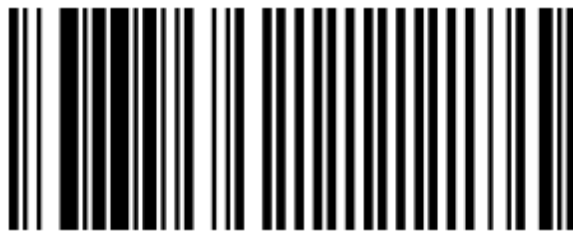
Hex 1



Hex 2



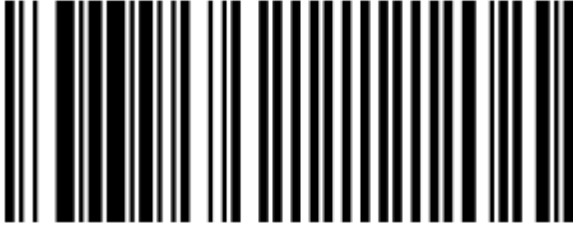
Hex 0



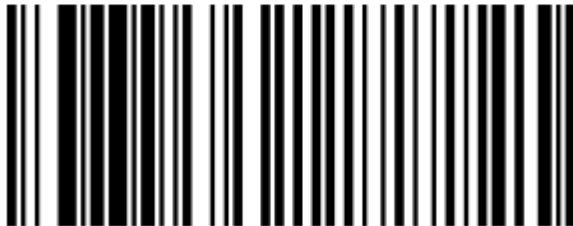
Installing ScanMaster on the NCR RP50 (7611) using POSReady 7

(Enable Interleaved 2 of 5)

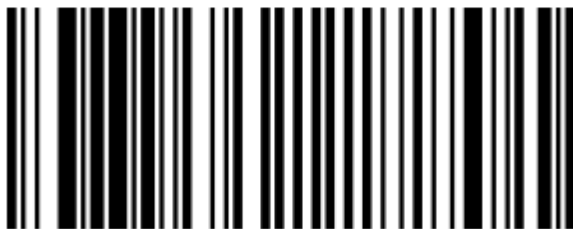
Hex 1



Hex 5

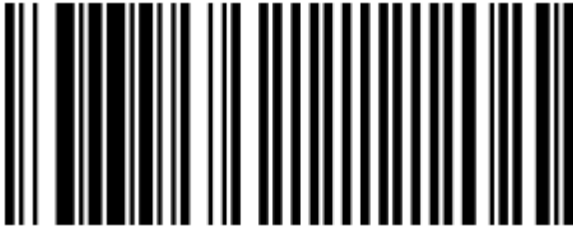


Hex A



Installing ScanMaster on the NCR RP50 (7611) using POSReady 7

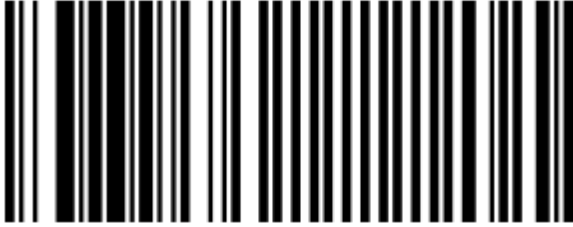
Hex 1



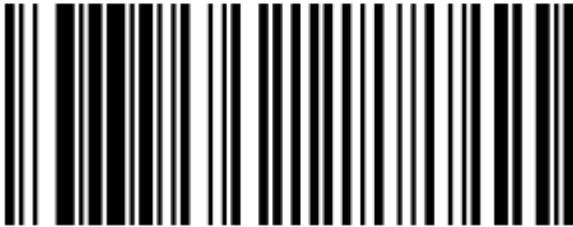
Installing ScanMaster on the NCR RP50 (7611) using POSReady 7

(Enable Code 128)

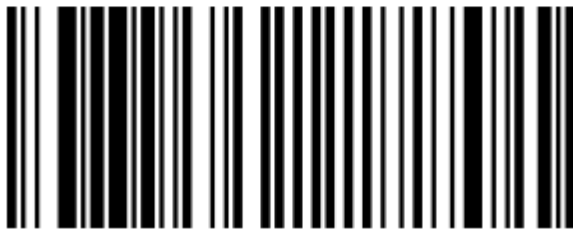
Hex 1



Hex 7

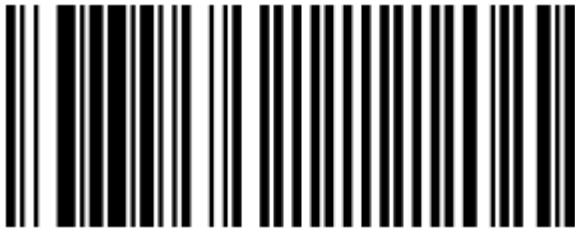


Hex A



Installing ScanMaster on the NCR RP50 (7611) using POSReady 7

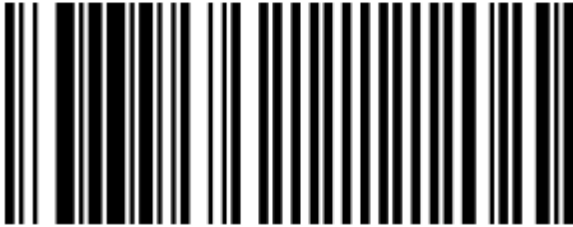
Hex 1



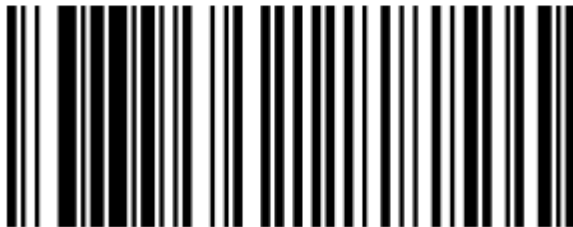
Installing ScanMaster on the NCR RP50 (7611) using POSReady 7

(Enable DataBar)

Hex 1



Hex 8

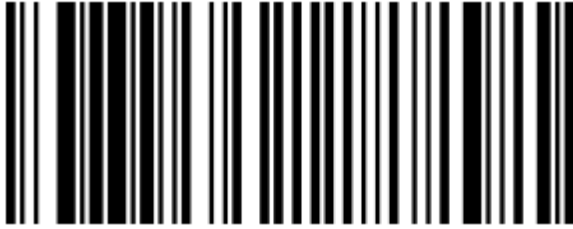


Hex A



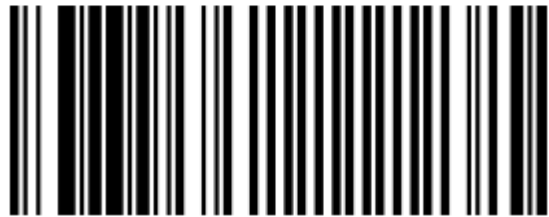
Installing ScanMaster on the NCR RP50 (7611) using POSReady 7

Hex 3



(Finish)

Save and Reset





© NCR Corporation, 2015

NCR endeavors to ensure that the information in this document is correct and fairly stated but does not accept liability for any error or omission.

The development of NCR products and services is continuous and published information may not be up to date. It is important to check the current position with NCR. This document is not part of a contract or license, save insofar as may be expressly agreed.

NCR Corporation
2651 Satellite Blvd.
Duluth, GA 30096

P/N 89000832
PIN 45001/082