



# *ScanMaster*



*Installation Guide,*

*ScanMaster with NCR 7702*

*(RealPOS XR7)*

## ScanMaster V2 Installation Guide

| <b>Date of Issue</b>   | <b>Product Identification Number</b> | <b>Part Number</b> | <b>Brief Description</b> |
|--|--------------------------------------|--------------------|--------------------------|
| Previous Releases: 89000198 March 2005; 89000283 January 2006; 89000341 May 2007; 89000412 December 2007; 89000415 January 2008; 89000504 January 2009 |                                      |                    |                          |
| April 2009   | 45001/083                            | 89000510           | 2.6.0 Updated            |
| February 2010  | 45001/083                            | 89000552           | 2.7.0 Release            |
| July 2010  | 45001/083                            | 89000578           | 2.7.1 Release            |
| January 2012   | 45001/083                            | 89000714           | 2.8.0 Release            |
| January 2013   | 45001/083                            | 89000750           | 2.9.0 Release            |
| April 2013   | 45001/083                            | 89000761           | NCR 60/80 Release        |
| June 2013  | 45001/083                            | 89000768           | NCR 60/80 1.01           |
| February 2014  | 45001/083                            | 89000801           | NCR 60/80 1.02           |
| February 2014  | 45001/083                            | 89000803           | NCR 40 Release 2         |
| January 2015   | 45001/083                            | 89000821           | NCR RealPOS XR7          |

**©Copyright Retalix, Inc. 1995-2015  
All rights reserved**

This publication is protected by federal copyright law. This document and its contents are the proprietary, confidential information and property of Retalix, Inc. ("Retalix"). Unauthorized disclosure, reproduction, distribution or use of this document and/or its contents in any form is strictly prohibited. No part of this publication may be reproduced or transmitted into any human or computer language in any form or by any means, stored in a retrieval system, transmitted, redistributed, translated or disclosed to third parties, or de-compiled in any way including, but not limited to, photocopy, photograph, electronic, mechanical, magnetic or manual without the express written permission of Retalix or its licensors, if any. This document, notwithstanding the above, may be distributed in electronic or printed form to personnel who are employed by either (1) a Retalix customer of the subject system of this document or (2) personnel from an authorized Retalix Channel Partner of the subject system of this document. All copies, so distributed and/or so authorized, shall contain a full copy of this copyright notice.

Retalix has prepared this manual for use by users, authorized third parties and personnel of Retalix as a guide to the proper installation, operation, customization and/or maintenance of Retalix equipment and software. The drawings and specifications contained herein are the property of Retalix and/or its licensors.

Retalix endeavors to ensure that the information in this document is correct and fairly stated but does not accept liability for any error or omission. Retalix makes no representation or warranties with respect to the contents hereof, and specifically disclaims any implied warranties of merchantability or fitness for a particular purpose or non-infringement. No commitments by Retalix or its suppliers are made by or from this documentation which is provided for information only.

Development of Retalix products and documentation is continuous: Retalix reserves the right to revise this publication and to make changes from time to time in the contents hereof or in the products herein described or discussed without notice and without any obligation of Retalix to notify any person or organization of such revision or changes. Information published in this document will likely become obsolete over time and it is recommended that users regularly check for updates and newer versions.

The trademarks Retalix, StoreNext, ISS45, ScanMaster, R10, PocketOffice, RBO, Connected Payments, Connected Services, Connected Loyalty and all other Retalix product names are registered trademarks or trademarks of Retalix; all other trademarks or registered trademarks are the property of their respective owners. Third-party products, services, or company names referenced in this document may be trademarked or copyrighted by their respective owners, and are for identification purposes only. Copyrights, trademarks and license agreements shall be governed and construed in accordance with the laws of the State of Texas and the Federal Arbitration Act, and shall benefit Retalix, its successors, and assigns.

Address comments and corrections to:

Retalix, Inc.  
Software Program Director  
797 Commonwealth Drive  
Warrendale, PA 15086

## **Configure BIOS and POSReady 7 on the NCR XR7 (7702) for ScanMaster**

Check the BIOS settings to ensure that the Network : IBA GE Slot 00C8 v1550 is Disabled and under Boot Device Priority that the 1<sup>st</sup> device is set to the HDD. If the Network boot is enabled, the boot time of the POS will be considerably longer.

The NCR XR7 (7702) comes preloaded with POSReady 7 SP1. For the out-of-box setup, only attach the keyboard, mouse and monitor. After initial power on a Set Up Windows screen will appear. Verify or select the correct Country or region, Time and Currency and Keyboard layout. Click Next.

Enter a computer name, i.e., NCR\_Lane1. Click Next.

Accept the license terms. Click Next.

Review your time and date settings screen. Select your time zone. Set the date and time.

Windows will now finalize your settings and reboot  
The POS will auto login as user NCR and password NCR.

Windows Settings:

Click Start, and type "**secpol.msc**" in the search area and hit Enter. In the left list, choose "**Local Policies**", then "**Security Options**".

In the right pane:

Set "**Accounts: Administrator account status**" to **Enabled**.

Set "**Interactive logon: Do not display last user name**" to **Enabled**.

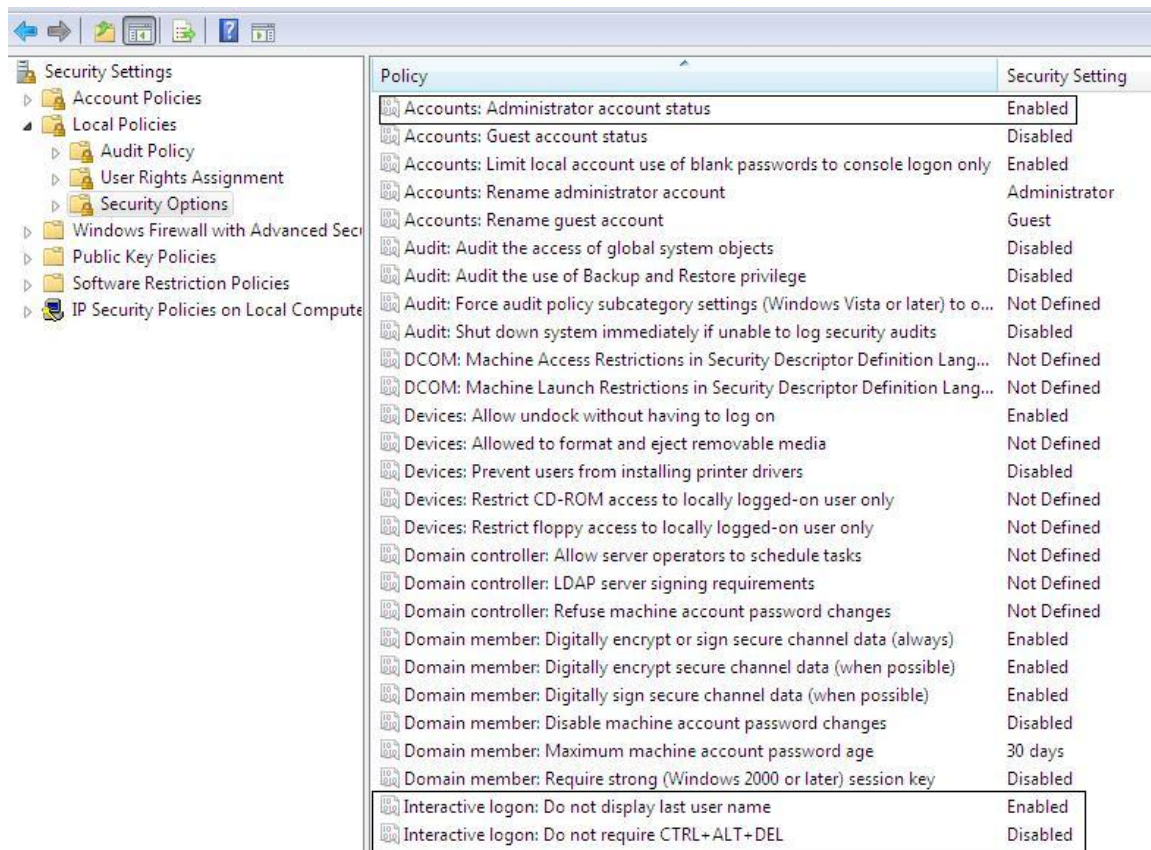
Set "**Interactive logon: Do not require CTRL + ALT + DEL**" to **Disabled**.

Set "**User Account Control: Admin Approval Mode for the Built-in Administrator account**" to **Disabled**.

Set "**User Account Control: Behavior of the elevation prompt for administrators in Admin Approval Mode to Elevate without Prompting**.

Set "**User Account Control: Run all administrators in Admin Approval Mode** to Disabled. (Error 70 – Permission Denied errors after the ScanMaster POS install have been seen in some instances if this setting is Enabled or Not Defined).

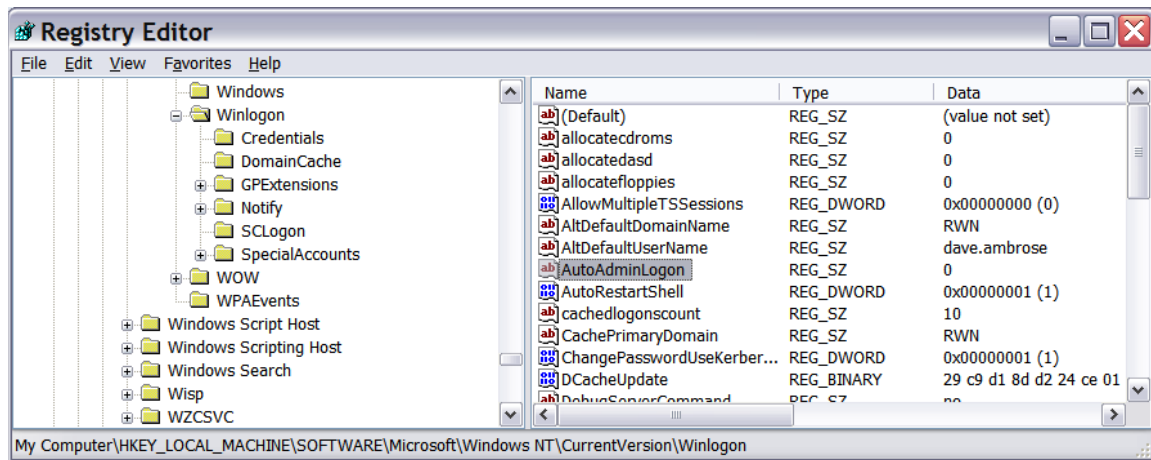
## Installing ScanMaster on the NCR XR7 (7702) using POSReady 7



Next double click the User Rights Assignment under Security Settings and double click **“Log on as a service”**, click Add User or Group, type in **“Administrator”** and click the Check Names button. Click Ok, click Apply (click Ok if an error occurs), click Ok and close secpol.msc.

## Installing ScanMaster on the NCR XR7 (7702) using POSReady 7

Disable auto login. Run Regedit and go to  
HKEY\_LOCAL\_MACHINE\Software\Microsoft\Windows  
NT\CurrentVersion\Winlogon and set the AutoAdminLogon value to 0.



Log off and log back in as the Administrator (No password required yet).

Setting the Administrator's password.

Click Start and open Control Panel. Change View by: to small icons  
Select "User Accounts".

Click "Create a password for your account".

Make the password the same as the administrator password on the Server.

Enter hint if so desired. Click Create password. **Do not forget this password or you may have to reinstall Windows 7!**

You should be back at the "Make changes to your user account" screen.

User Account Control (UAC) is off by default.

Close the Control Panel.

Reboot and log back in as the Administrator with the new password.

Click Start and open Control Panel. Change View by: to small icons if not already set.

Under Windows Update.

Click Change Settings.

Click the drop down arrow and select Never check for updates.

Click OK.

Return to the main Control Panel.

Click Power Options.

Click the down arrow by the Show additional plans.

Click High Performance.

## Installing ScanMaster on the NCR XR7 (7702) using POSReady 7

Optional – Default settings will cause the monitor to turn off after 15 minutes of inactivity. You can change this by going to Change Plan Setting and adjust display options.

Return to the main Control Panel.

Click Network and Sharing Center.

Click Change adaptor settings.

Right click the Local Area connection and click Properties.

Click the Configure button, verify/set that all options under Power Management are unchecked.

Click OK.

Right click the Local Area connection and click Properties.

Highlight Internet Protocol Version 4 and click Properties. Fill in the IP address information. Click OK. Click Close.

Return to the Network and Sharing Center.

Click Change advanced sharing settings. Ensure that the option Turn on network discovery and Turn on file and printer sharing are turned on. Scroll down and turn off Password protected sharing. Do this for both the Home or Work and Public sections.

Click Save changes.

Return to the Control Panel.

Click Date and Time.

Uncheck Notify me when the clock changes

Return to the Control Panel.

Click Action Center.

Change Action Center settings.

Uncheck any items, i.e. Windows Update, Firewall, etc. that you don't want Windows to pop notification messages. (Recommended to uncheck all)

Click OK.

Return to Control Panel.

Click Windows Firewall.

Click Turn Windows Firewall on or off.

Turn off both private and public firewall options.

Click Ok.

Return to Control Panel.

Click Display.

Select Adjust Resolution and set to 800 X 600 on all monitors.

Click Apply.

Click to keep changes.

Click through warnings.

Click OK

## Installing ScanMaster on the NCR XR7 (7702) using POSReady 7

Close the Control Panel.

If the computer name or workgroup name needs changed, click System.

Click Advanced system settings.

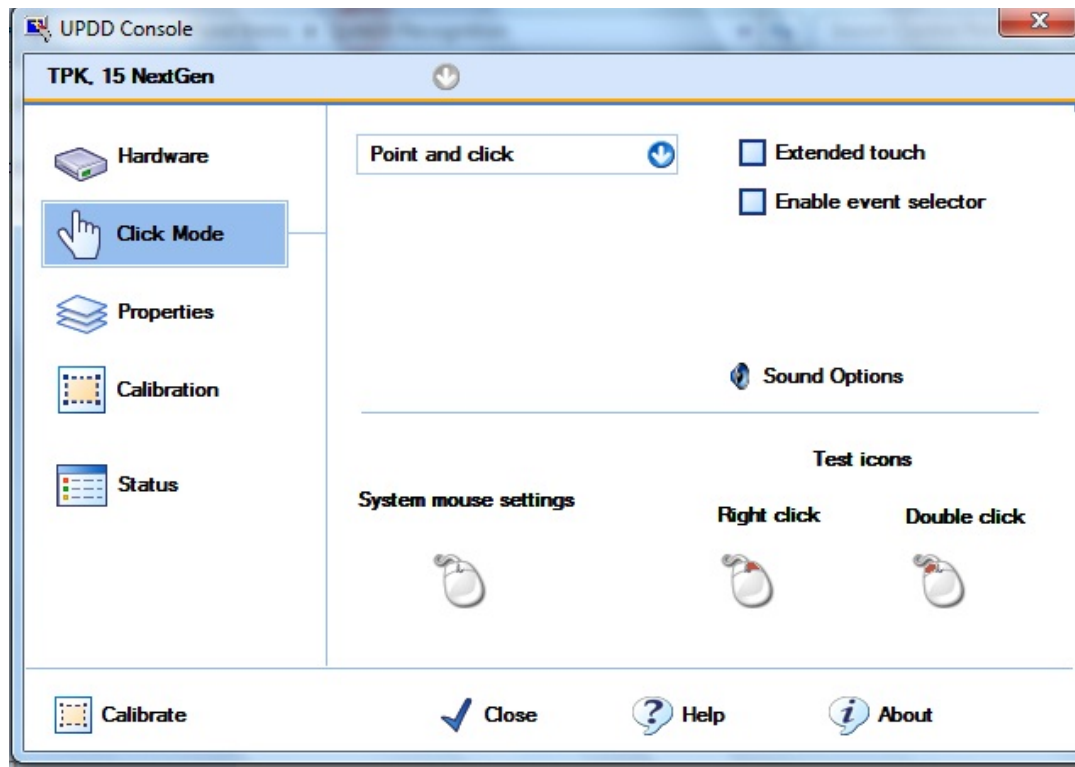
Under the Computer name tab, domain and workgroup settings, click Change setting. If prompted for a reboot, accept and let the system reboot to update its settings.

Note: For security reasons, you may want to delete the NCR users.

POSReady 7 should now be ready for software installation.

The XR7's all-in-one touch screen design already has the Touch Driver installed however you need to download and install Touch Base Drivers\_05\_01\_1134 from the Retalix Channel Partners website. Copy the new driver to c:\Install\Drivers\Touch and double click to install/update touch driver. Calibrate both Screens (if using the 5968) by clicking on Calibrate as shown below and follow directions on the screen and also set as indicated on screens below.

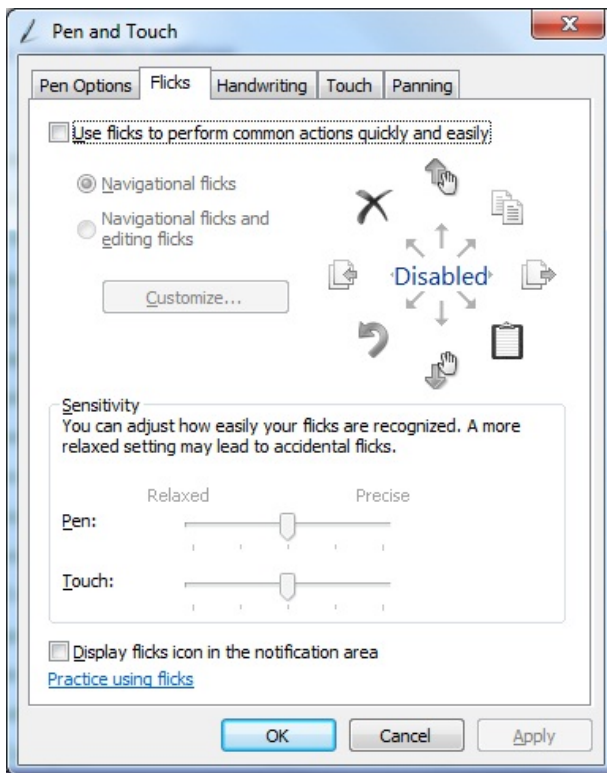
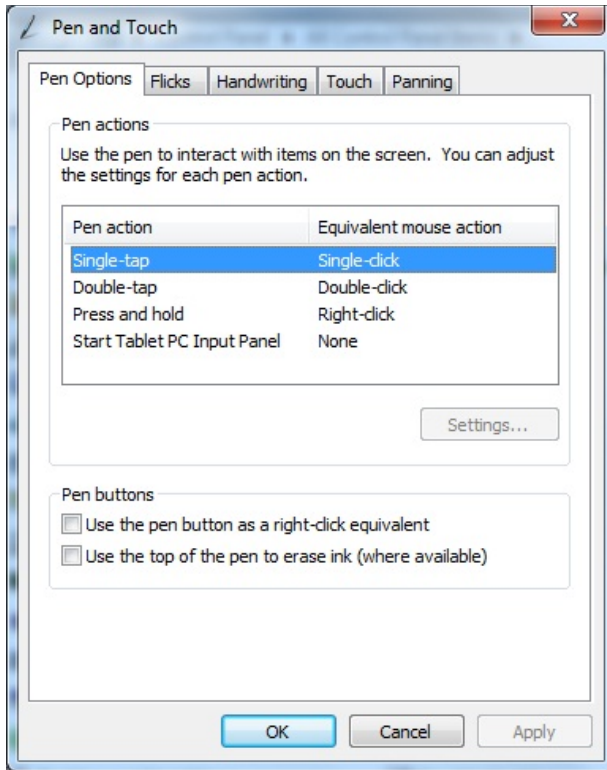
Under Control Panel-> Pointer Devices



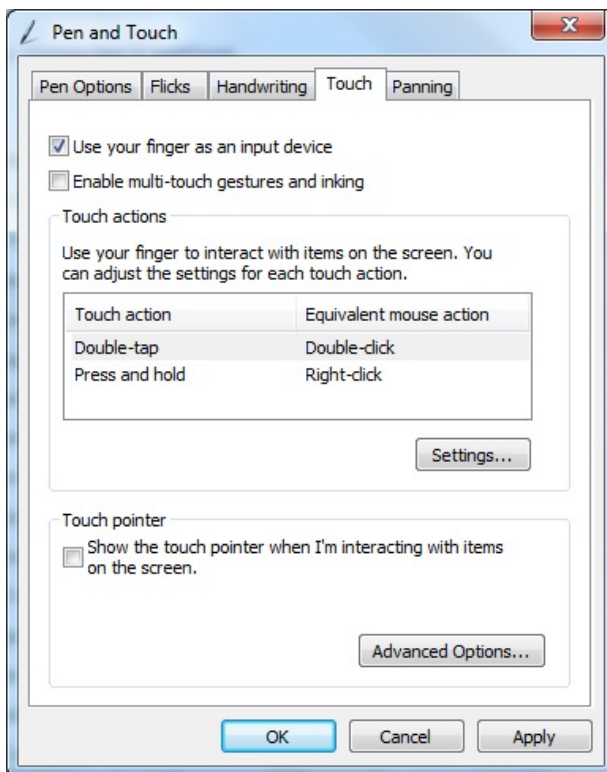
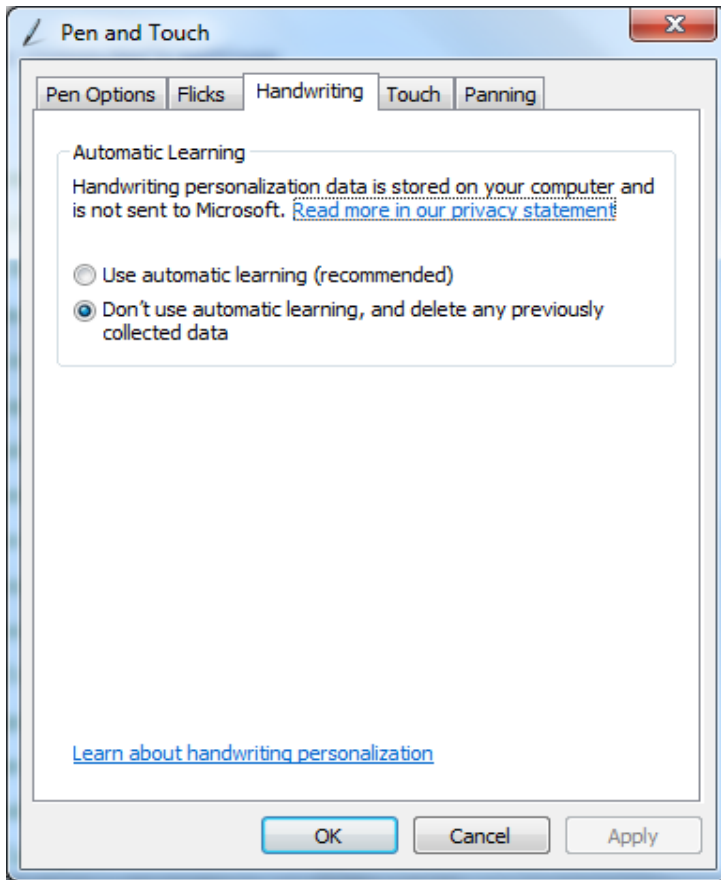
Under Control Panel-> Pen & Touch.

Turn off options as indicated below.

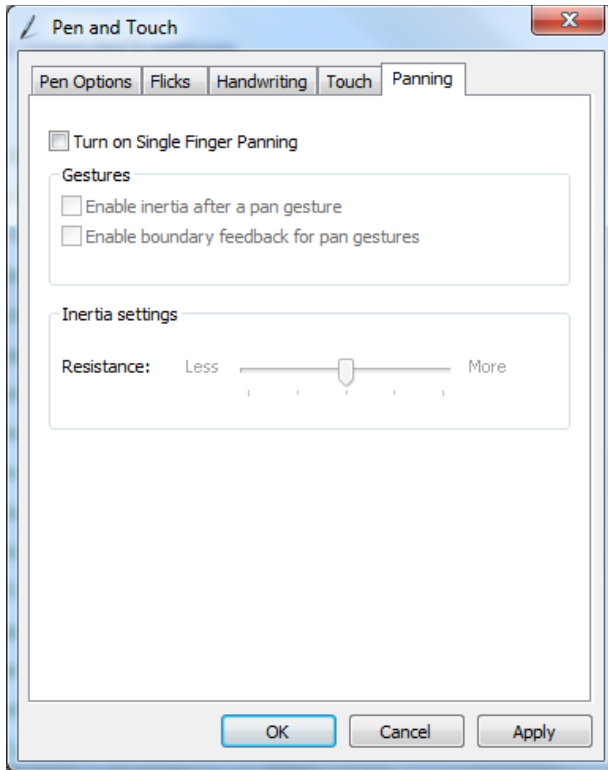
## Installing ScanMaster on the NCR XR7 (7702) using POSReady 7



## Installing ScanMaster on the NCR XR7 (7702) using POSReady 7



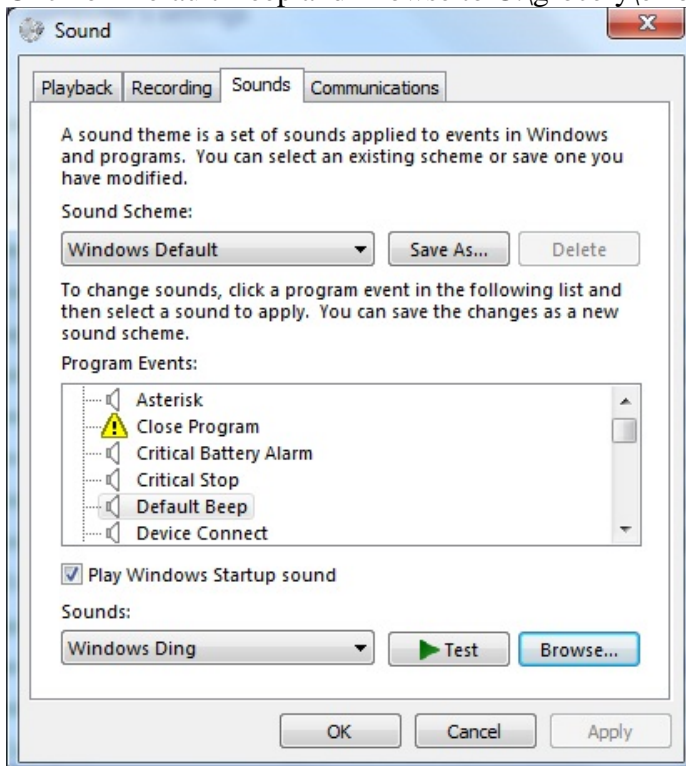
## Installing ScanMaster on the NCR XR7 (7702) using POSReady 7



### Under Control Panel-> Sounds

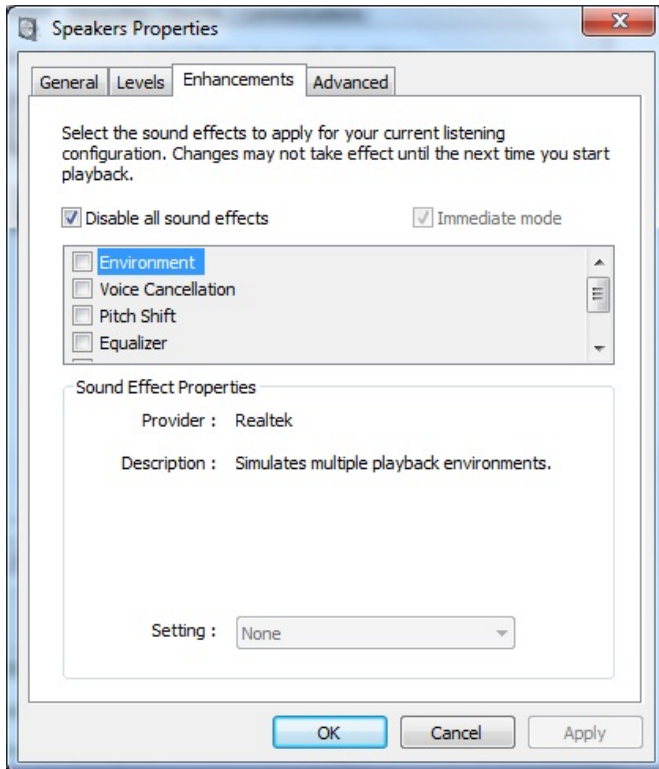
Click on Sound Tab.

Click on Default Beep and Browse to C:\grocery\error.wav and select.



## Installing ScanMaster on the NCR XR7 (7702) using POSReady 7

Click on Playback Tab, Click on Speakers, Click on Properties and Click on Enhancements Tab and Disable All sound effects.



To enable beep on touch manually edit `c:\regstart.dat` and add `\TOUCHSND`

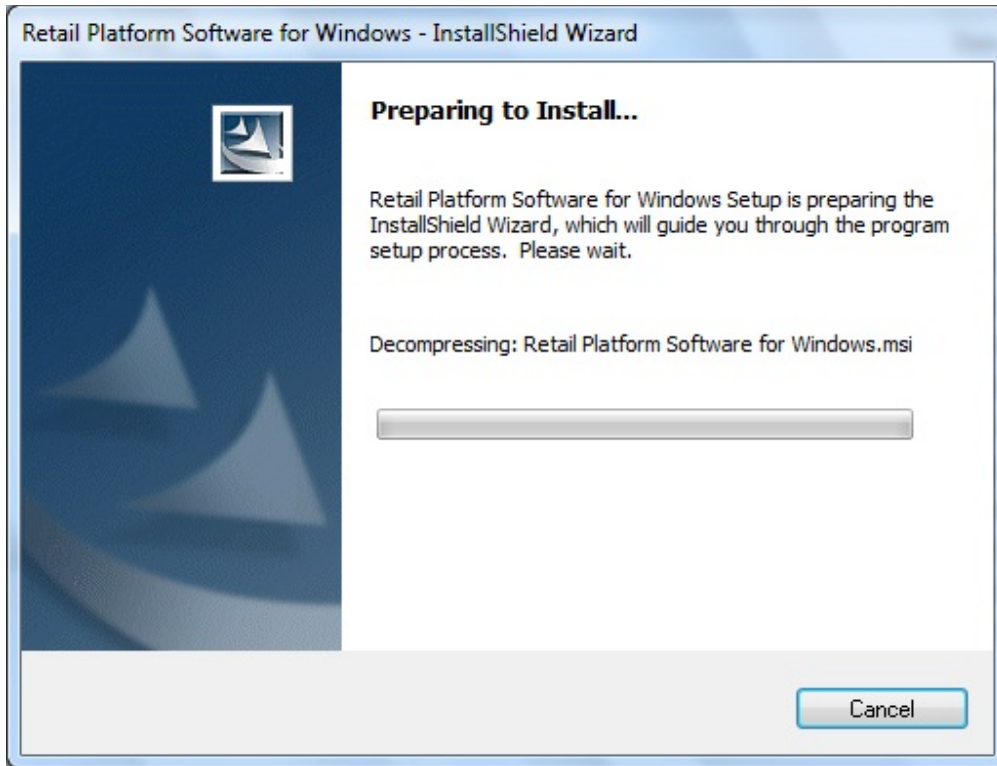
### **Install NCR Retail Platform Software for Windows (OPOS).**

Obtain the Retail Platform Software for Windows version 4051.zip from the Retailix Channel Partners website. Create the folder RPSW under `C:\Install\Drivers` and copy the install files to that folder. .

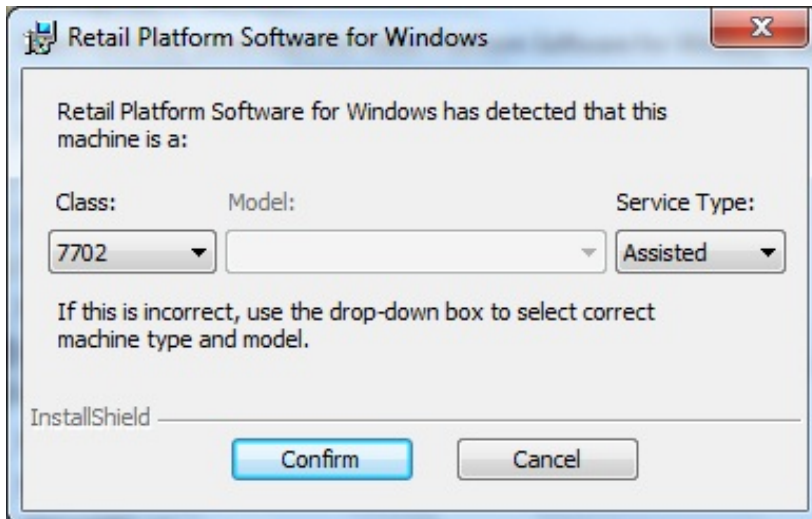
Right Click the Retail Platform Software for Windows.exe and Click Run as administrator.

The installation starts.

## Installing ScanMaster on the NCR XR7 (7702) using POSReady 7

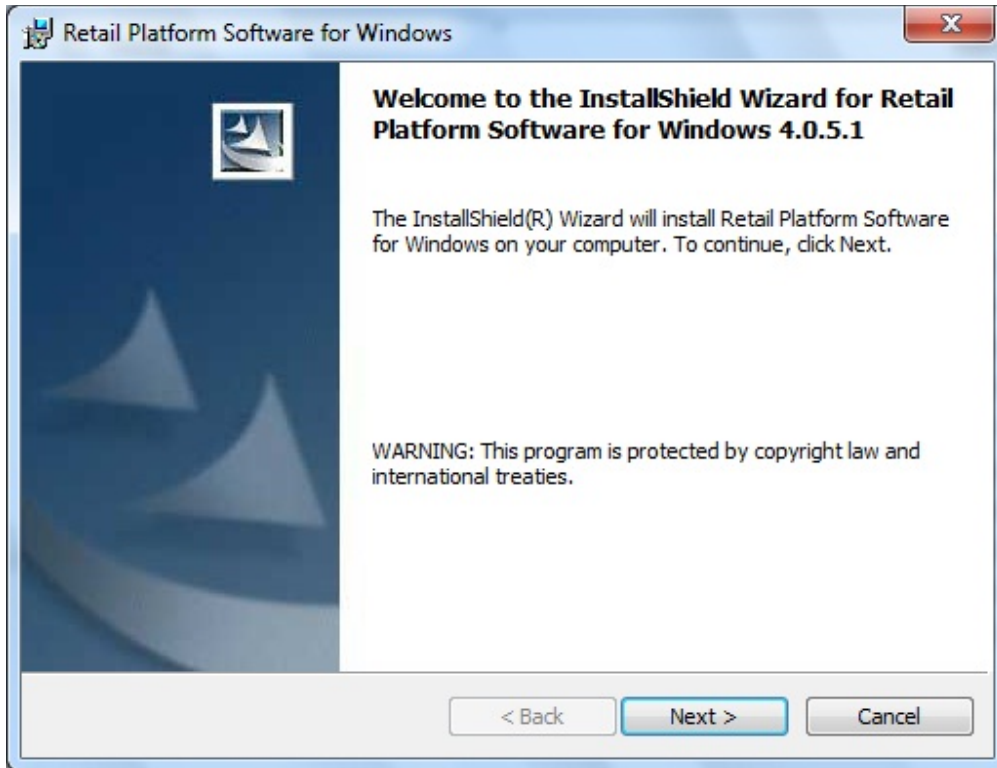


The machine type is detected. Click Confirm (don't change the other drop downs).

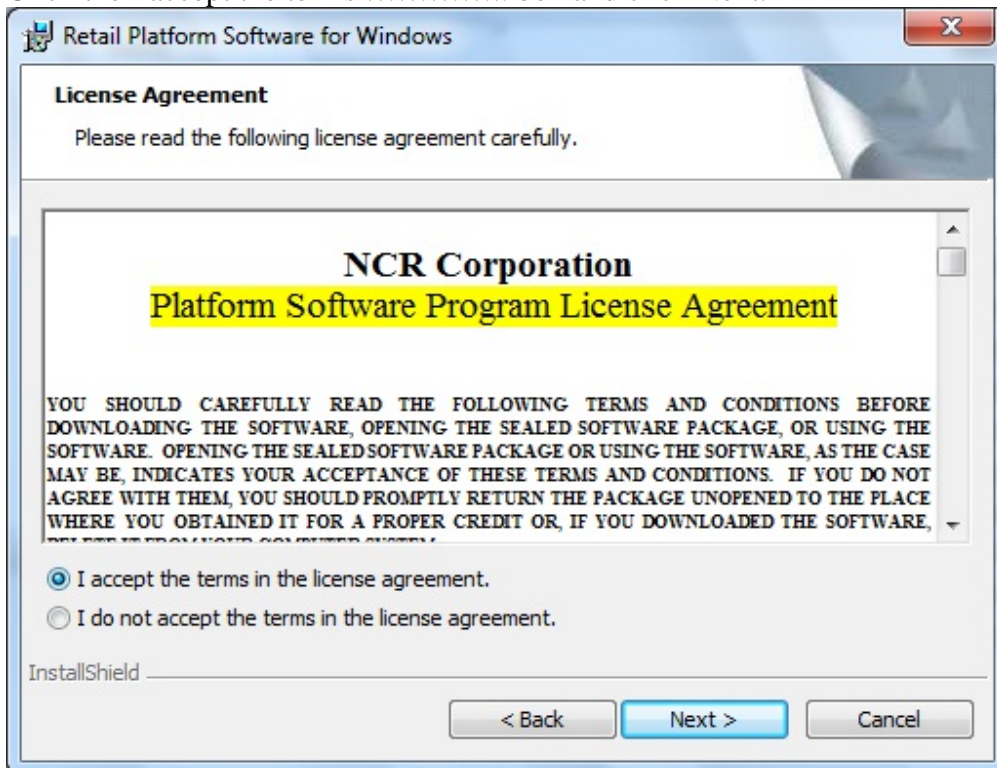


Click Next at the Welcome screen.

Installing ScanMaster on the NCR XR7 (7702) using POSReady 7

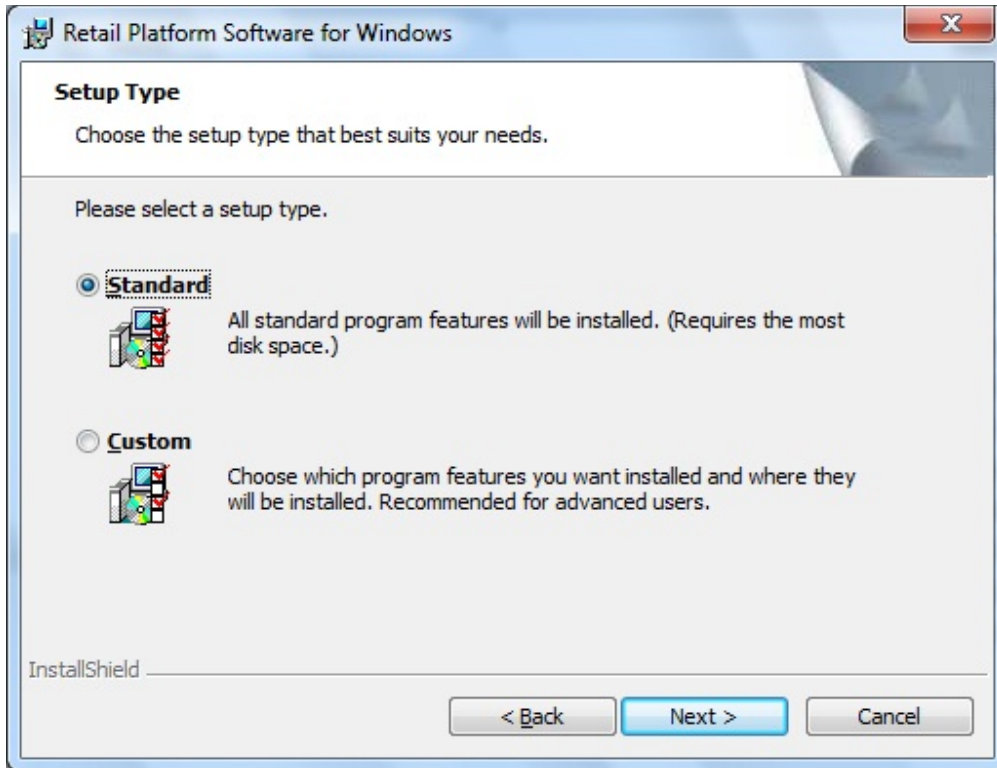


Click the I accept the terms ..... box and click Next.

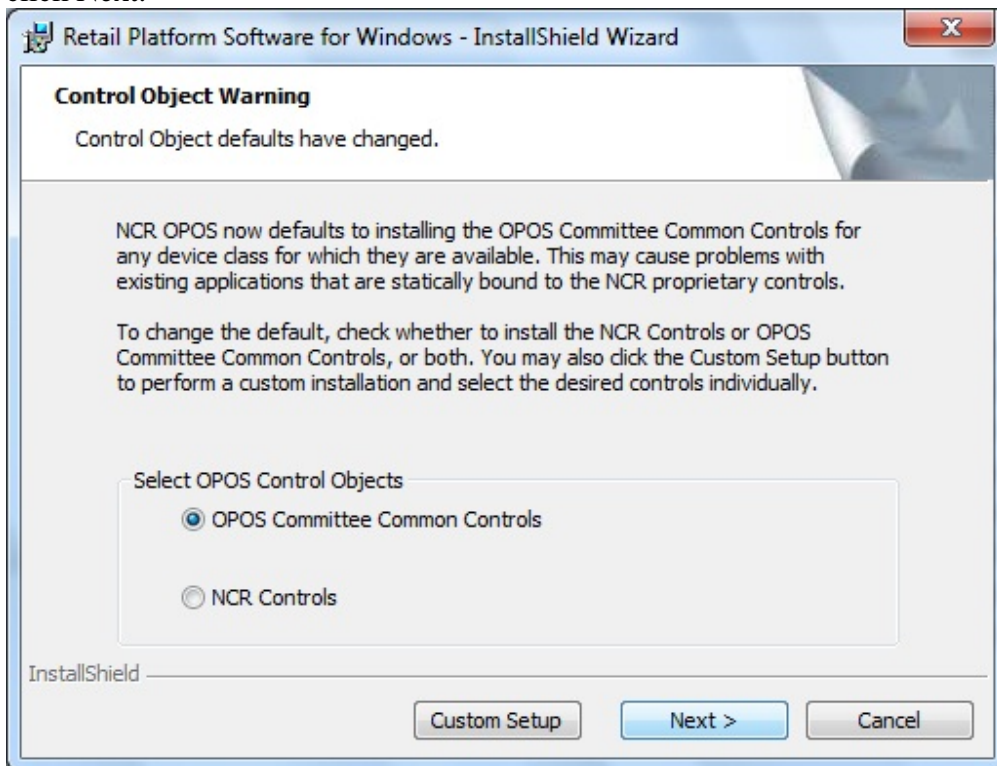


At the Setup Type screen select Standard and Click Next.

## Installing ScanMaster on the NCR XR7 (7702) using POSReady 7

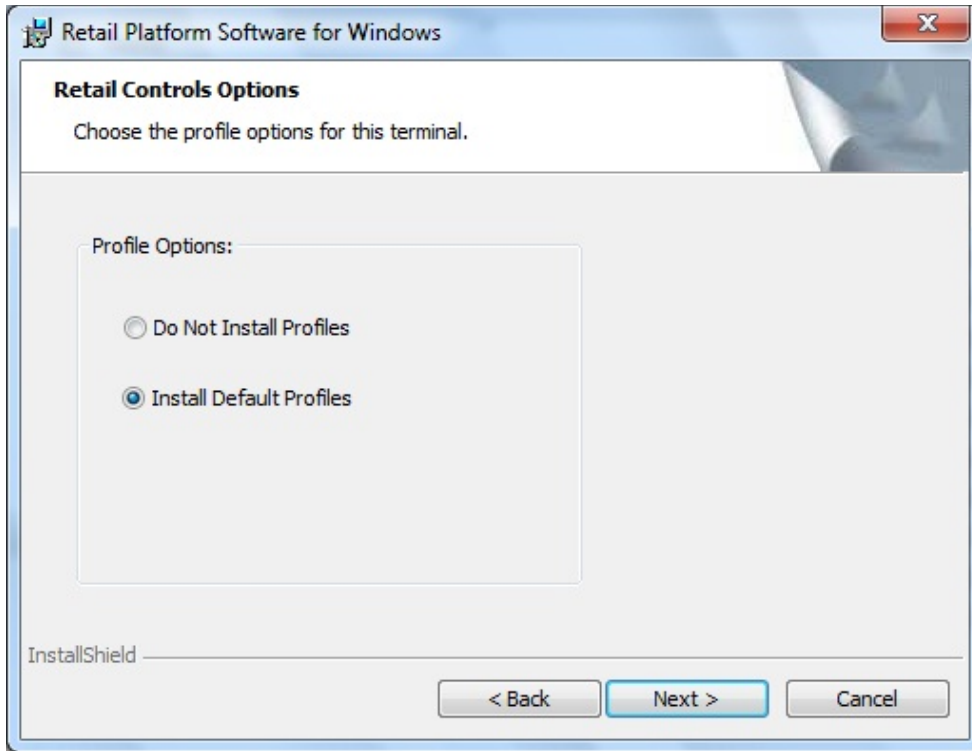


At the Control Object Warning screen select OPOS Committee Common Controls and click Next.



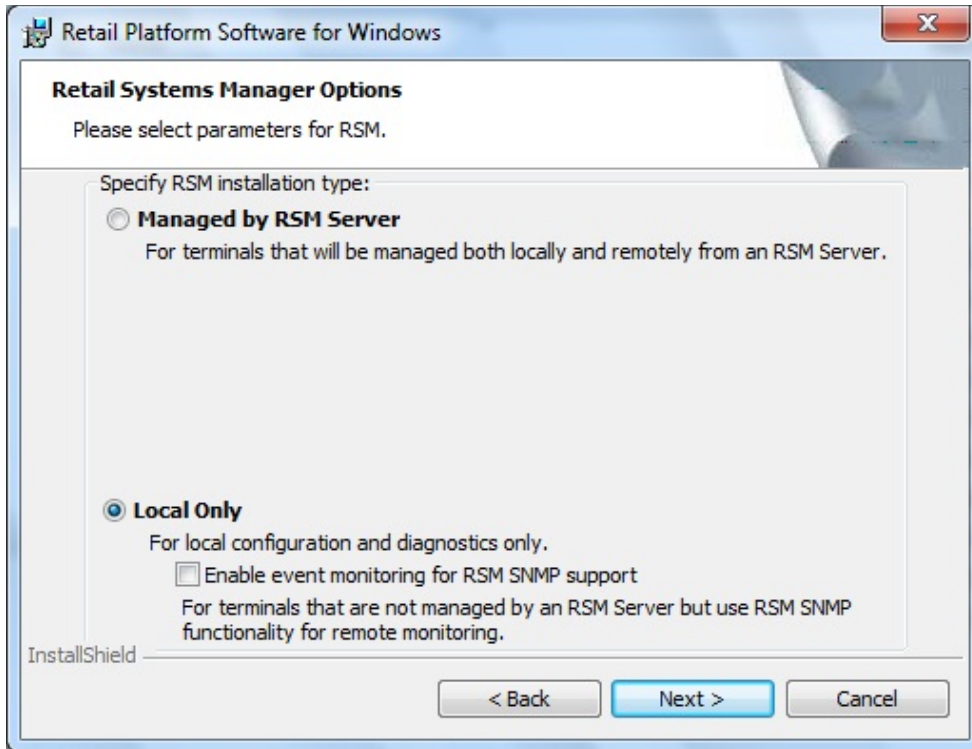
At the Retail Control Options screen select Install Default Profiles and click Next.

## Installing ScanMaster on the NCR XR7 (7702) using POSReady 7

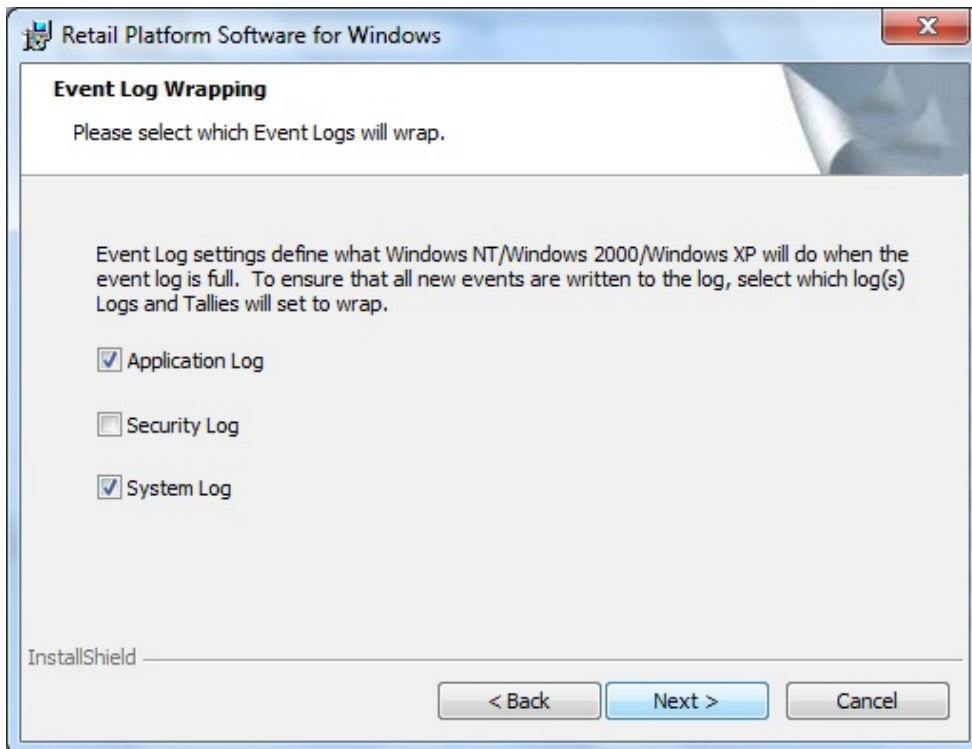


At the Retail Systems Manager Options screen select Local Only and click Next unless you are using a RSM server for remote management, in which case chose Managed by RSM Server and answer the additional questions on the screen.

## Installing ScanMaster on the NCR XR7 (7702) using POSReady 7

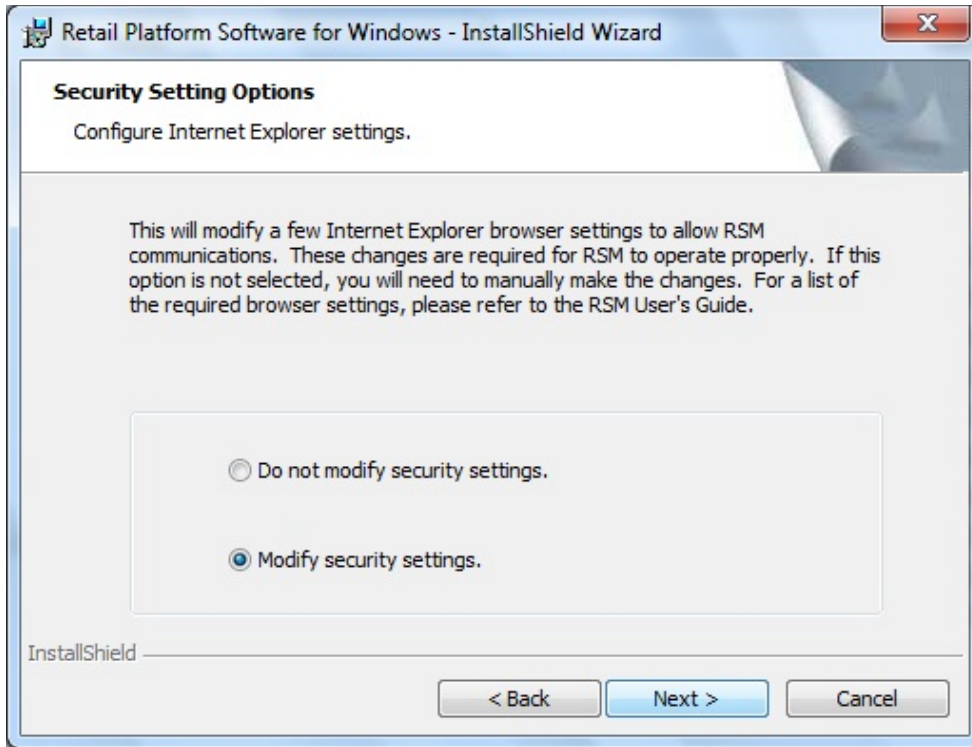


At the Event Log Wrapping screen click Next.

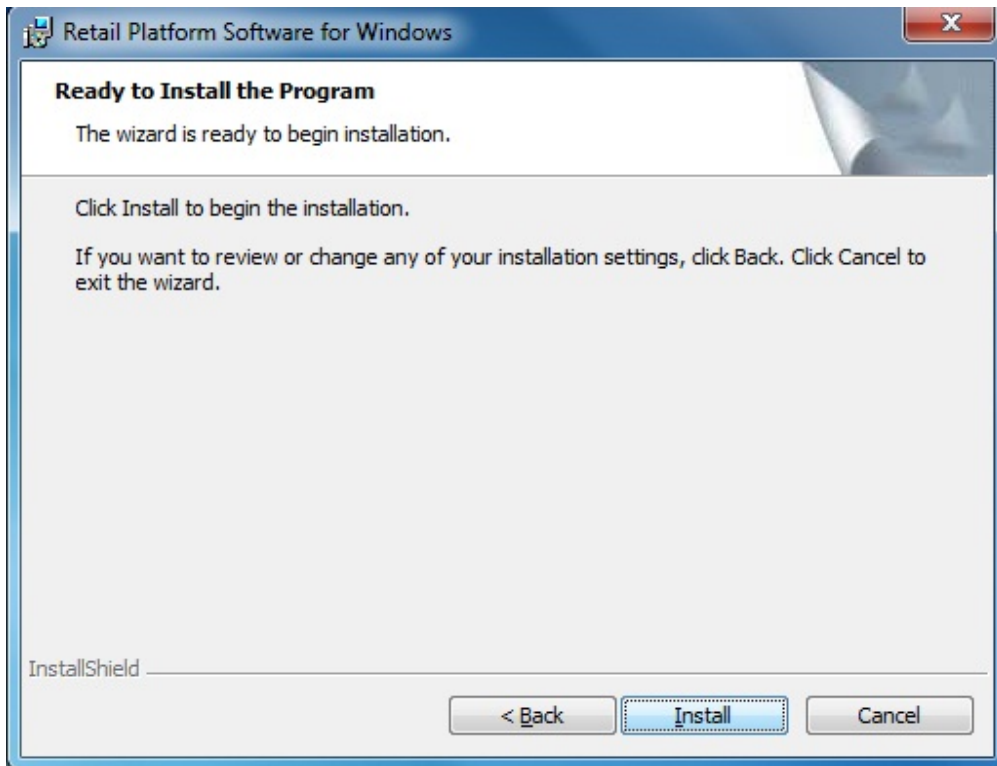


At the Security Setting Options screen select Modify security settings and click Next.

## Installing ScanMaster on the NCR XR7 (7702) using POSReady 7

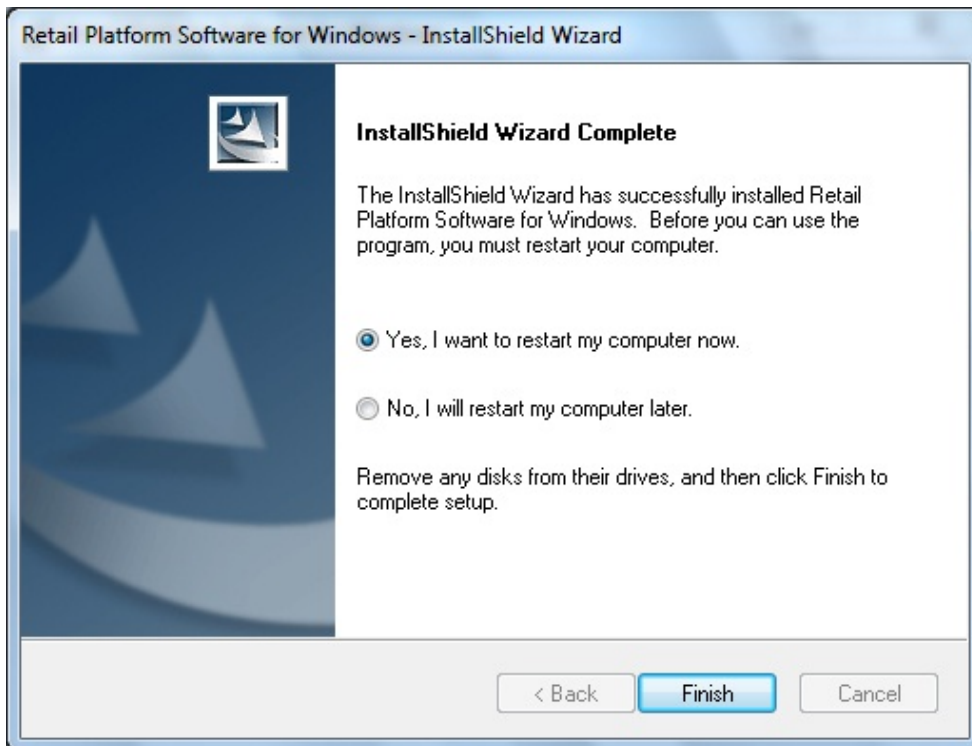
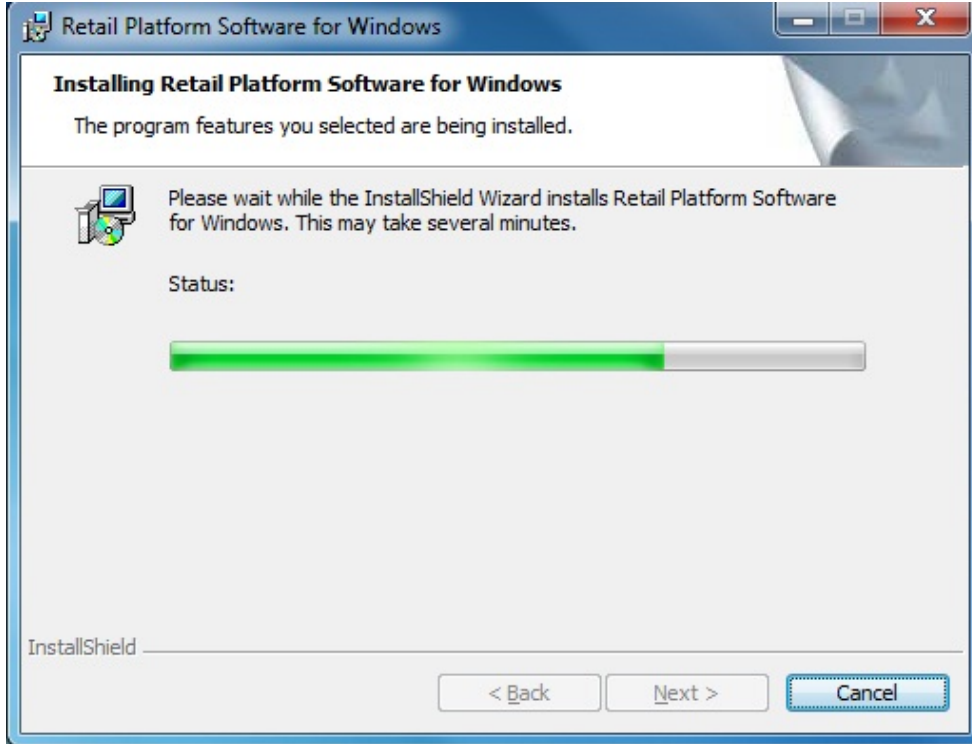


At the Ready to Install the Program screen click Install.



## Installing ScanMaster on the NCR XR7 (7702) using POSReady 7

RSM is installed.



## Installing ScanMaster on the NCR XR7 (7702) using POSReady 7

At this point attach the USB devices, i.e., POS printer, scanner. The Cash Drawer is to be plugged into the Cash Drawer port on the XR7 (7702) motherboard regardless of which printer is used.

At the restart message box click Yes.  
At the completed screen click Finish.

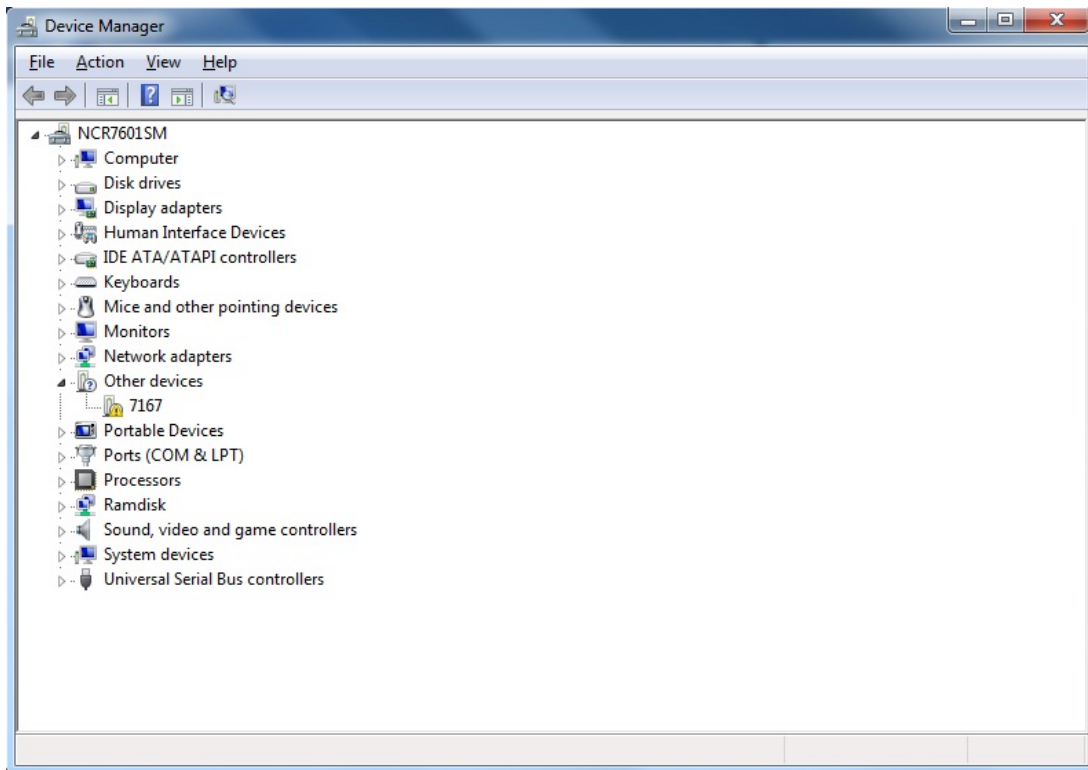
After reboot, logon as administrator.

Don't attempt to setup your devices at this point. That will be explained later in this document.

**NOTE: If you ever uninstall NCR RSM(OPOS) and reinstall it will be necessary to go to the C:\Grocery folder on the POS and double click NCROPOS.reg to reinstall the correct Device Profiles. The Device settings will also need redone to match the attached devices.**

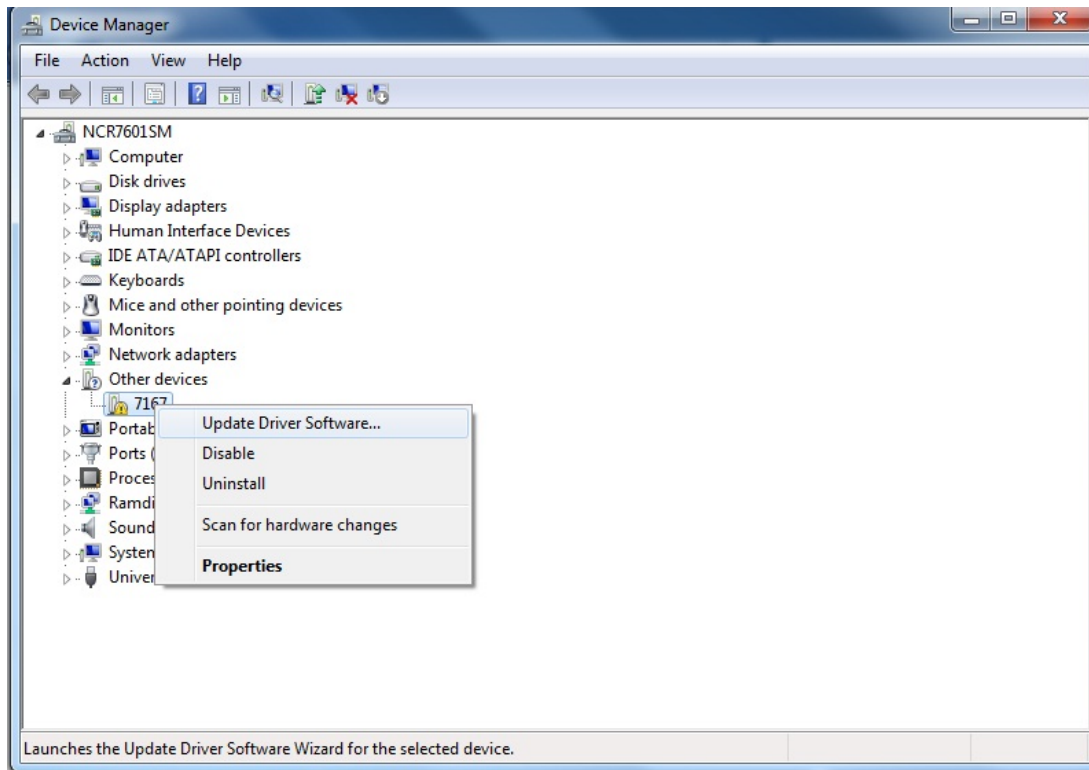
Installing NCR printer drivers (IONetworks). If you are using an Epson TM-6000III/IV USB printer, install the Epson OPOS and set up the printer via the Epson utility.

Click Start and go to the Control Panel. Click Device Manager.

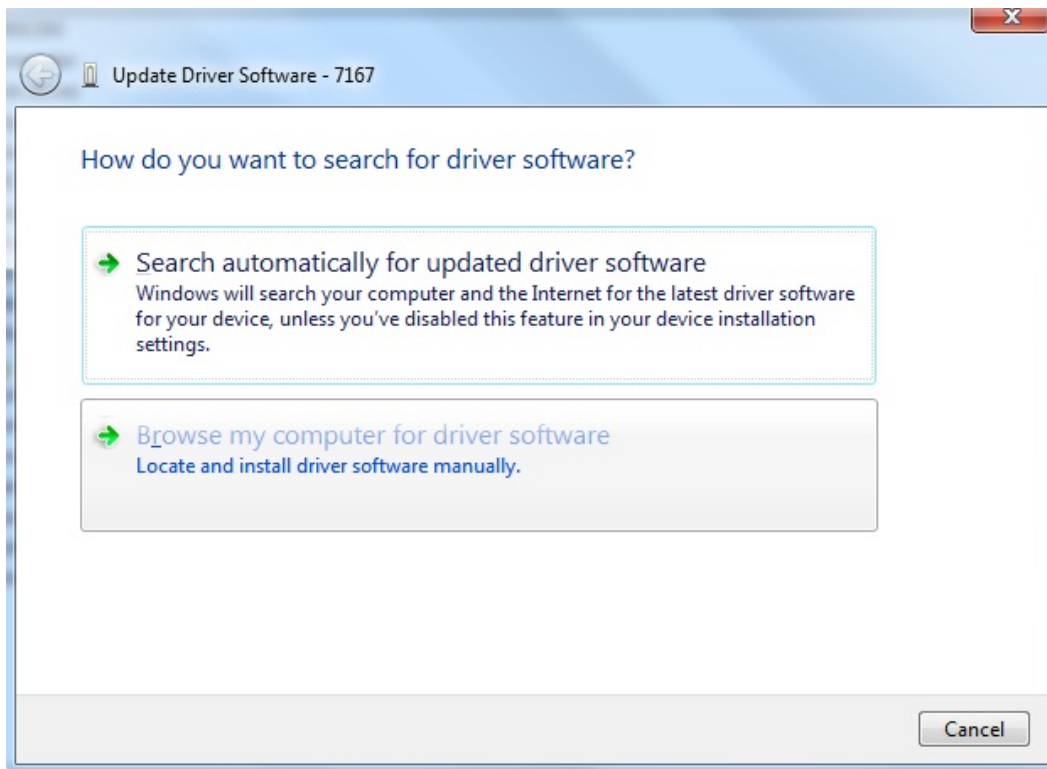


Under Other devices right click the device, i.e., 7167, with the yellow exclamation and click Update Driver Software.

## Installing ScanMaster on the NCR XR7 (7702) using POSReady 7

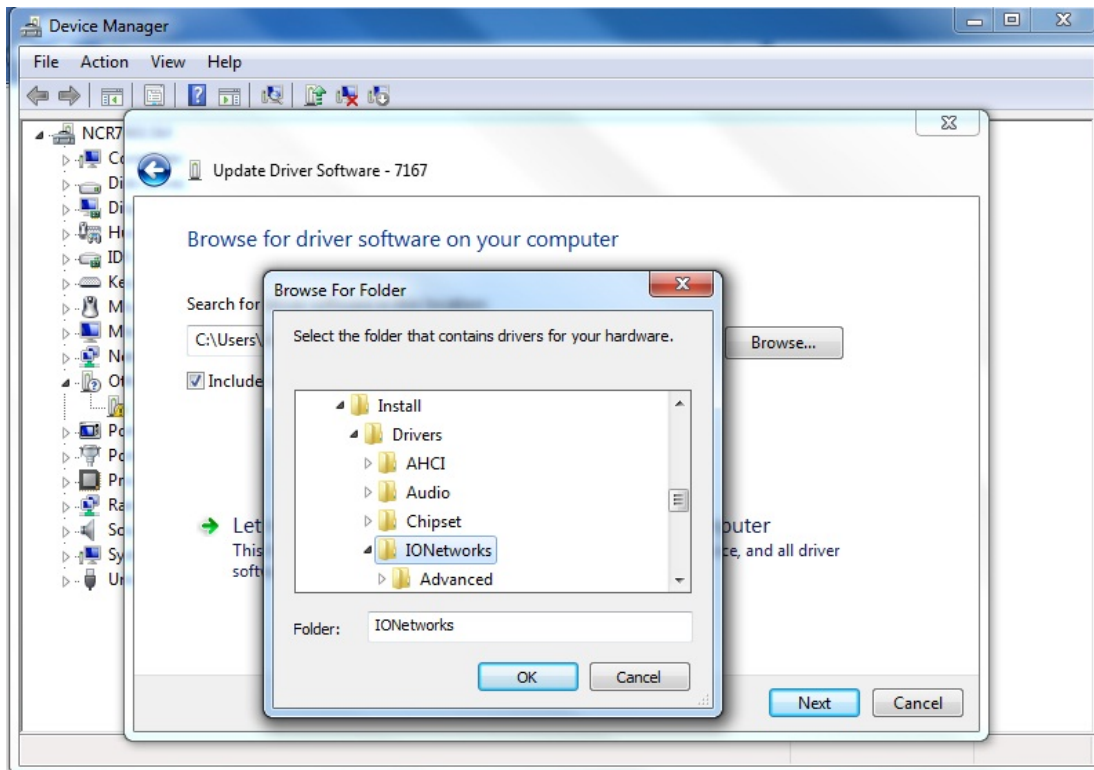


Click Browse my computer for driver software.

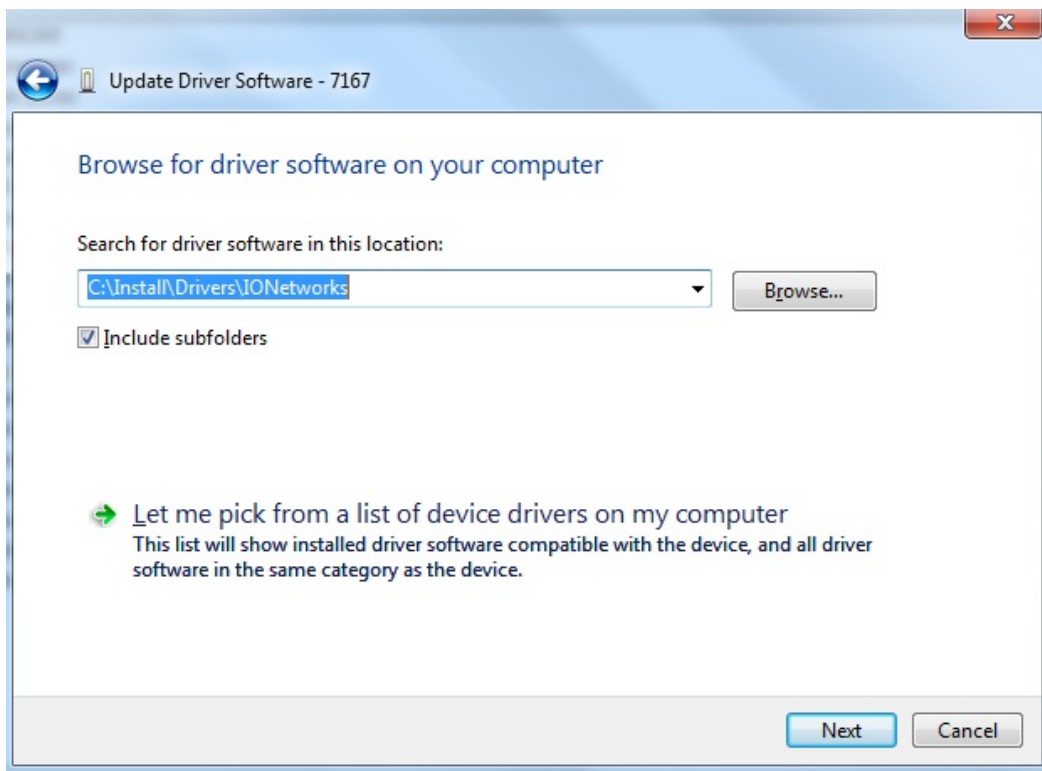


Browse to C:\Install\Drivers\IONetworks and click OK.

## Installing ScanMaster on the NCR XR7 (7702) using POSReady 7

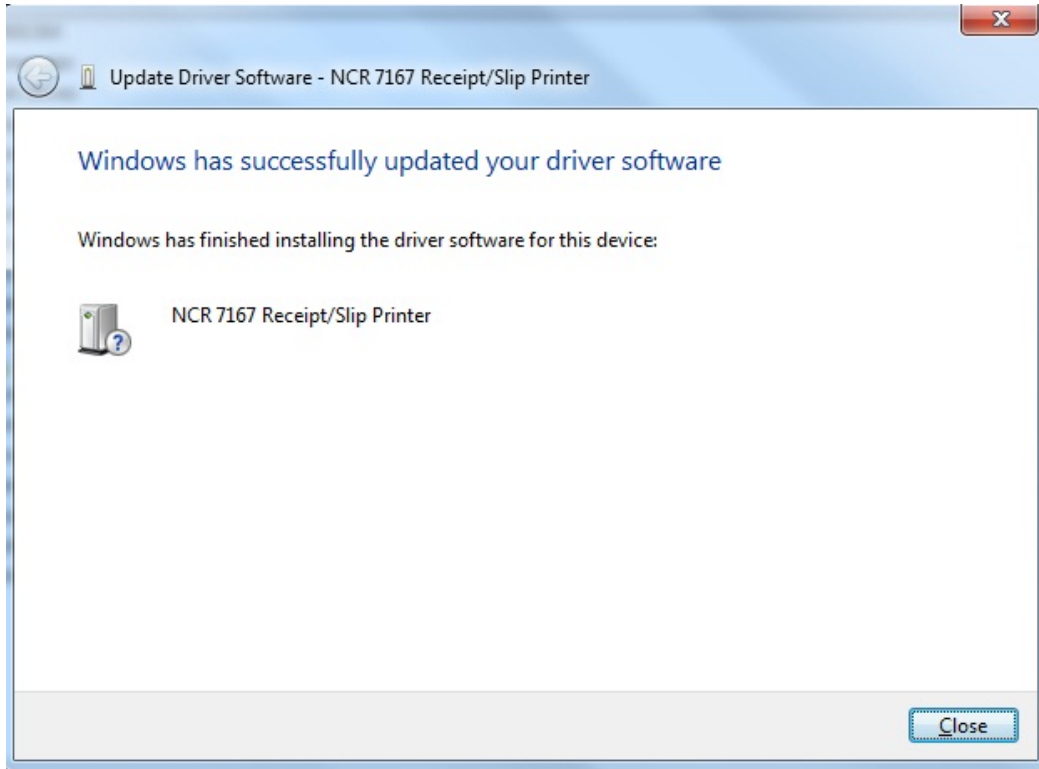


Click Next at the following screen.

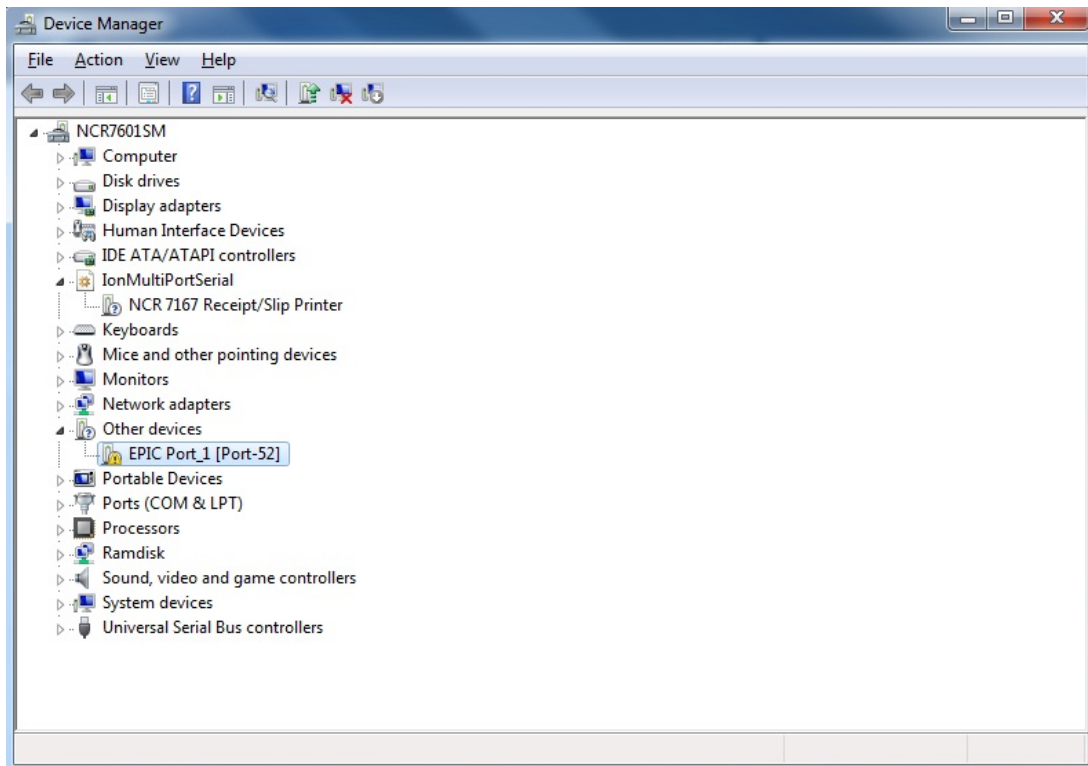


## Installing ScanMaster on the NCR XR7 (7702) using POSReady 7

At the following screen click Close.



Go back to Device Manager and repeat the same steps for the EPIC Port device.



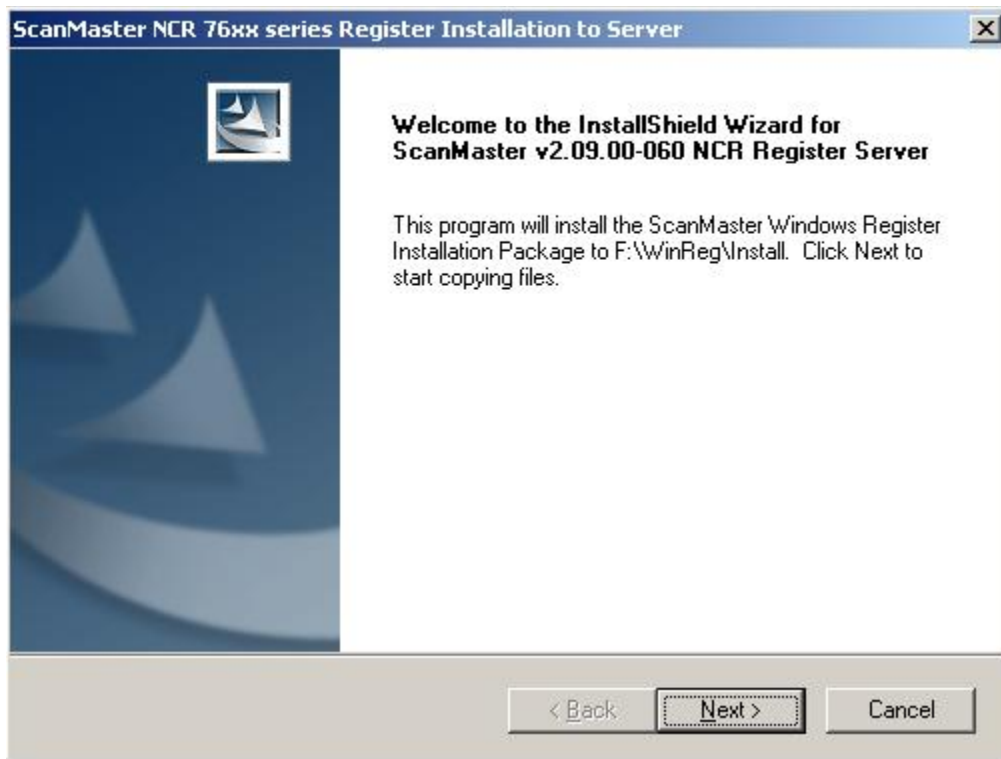
## Installing ScanMaster on the NCR XR7 (7702) using POSReady 7

Close Device Manager and Control Panel.

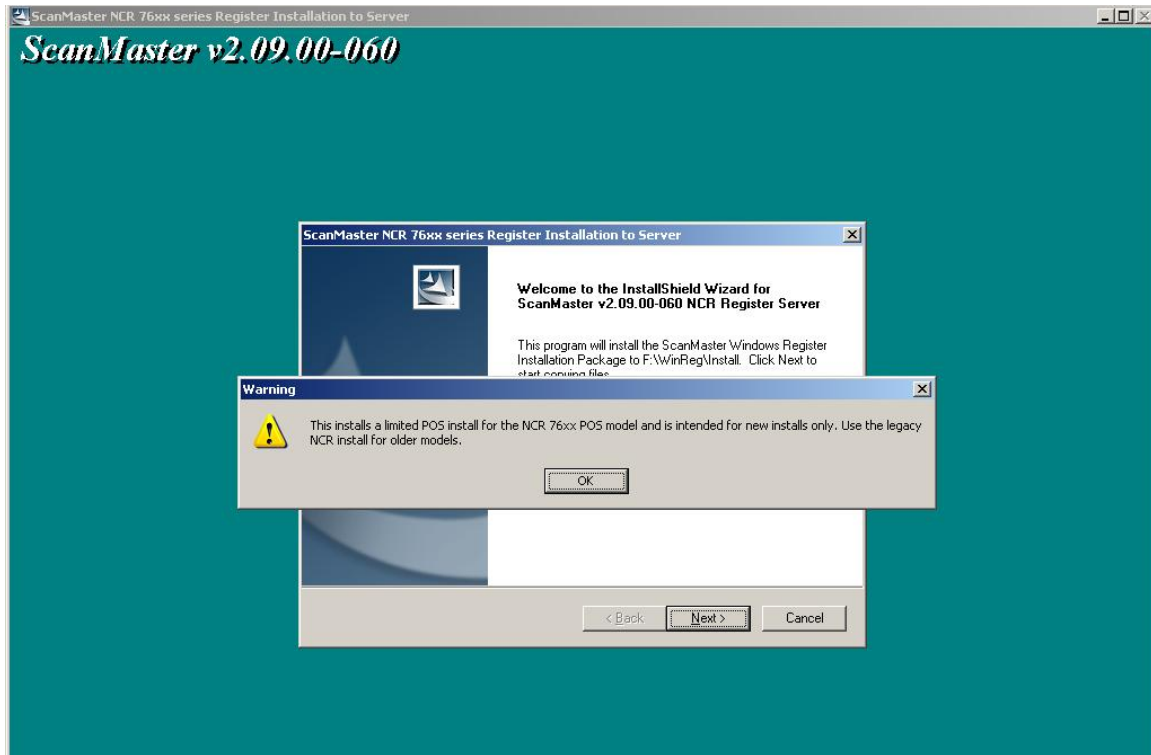
The POS is now ready for the installation of Pervasive Workgroup (See ScanMaster Installation Guide). Once Pervasive is installed go to the ScanMaster server and install the new NCR POS installation to the server. Install v2.09.00-060, obtain the new NCR limited full install files along with the regular patch files from the Retailix Channel Partner website and also the latest patch which at the time of this writing is patch 2.09.00-110. Starting with v2.10.00-050 the newer NCR POS models will be incorporated into an all-in-one NCR/IBM/Fujitsu/HP install. Pre 76xx models will continue to be installed with the Legacy NCR POS install.

Once the new install is on the server, install the POS per the instructions in the ScanMaster installation guide. This install is limited to just a new NCR install so the following screens are somewhat different than the standard install screens. It will also install a set of RSM device profiles in addition to some of the profiles installed by the NCR RSM application.

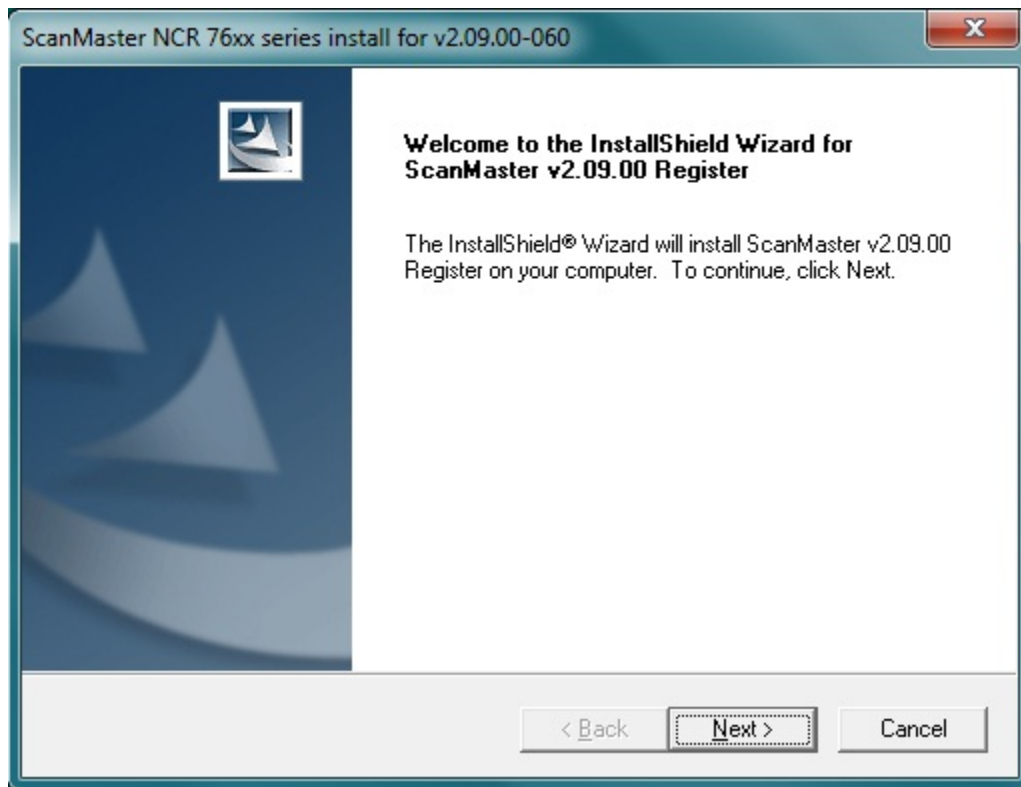
Install NCR register install to server screens:



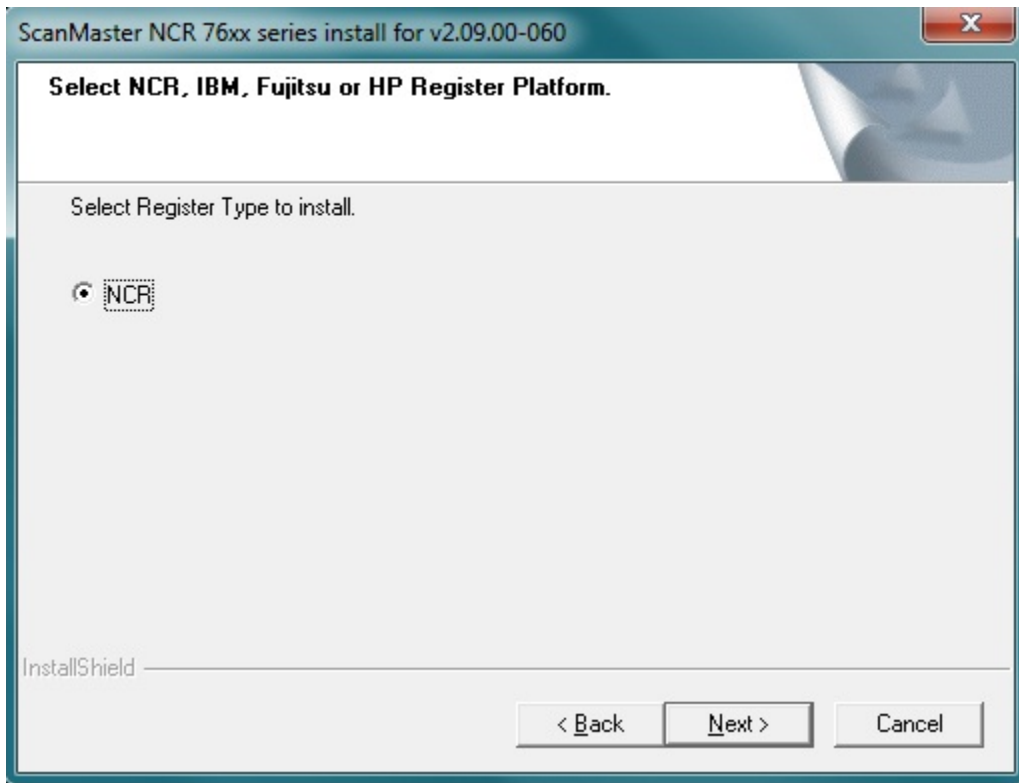
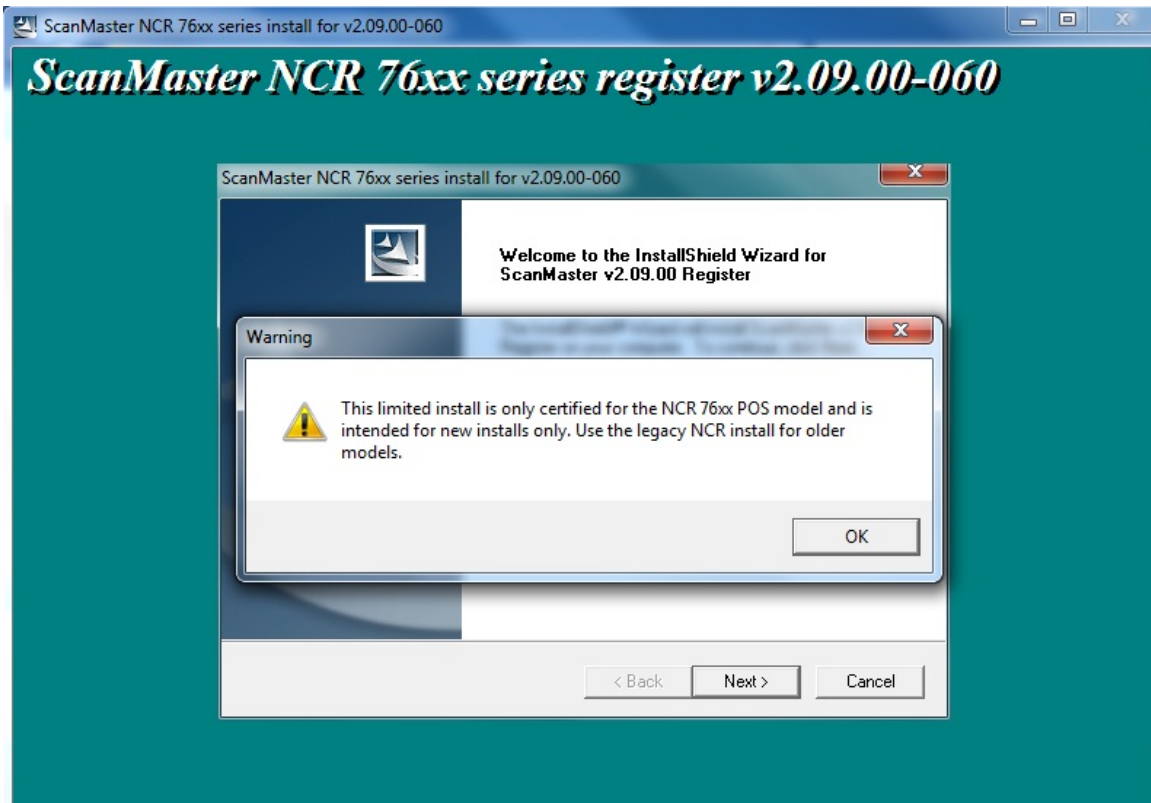
## Installing ScanMaster on the NCR XR7 (7702) using POSReady 7



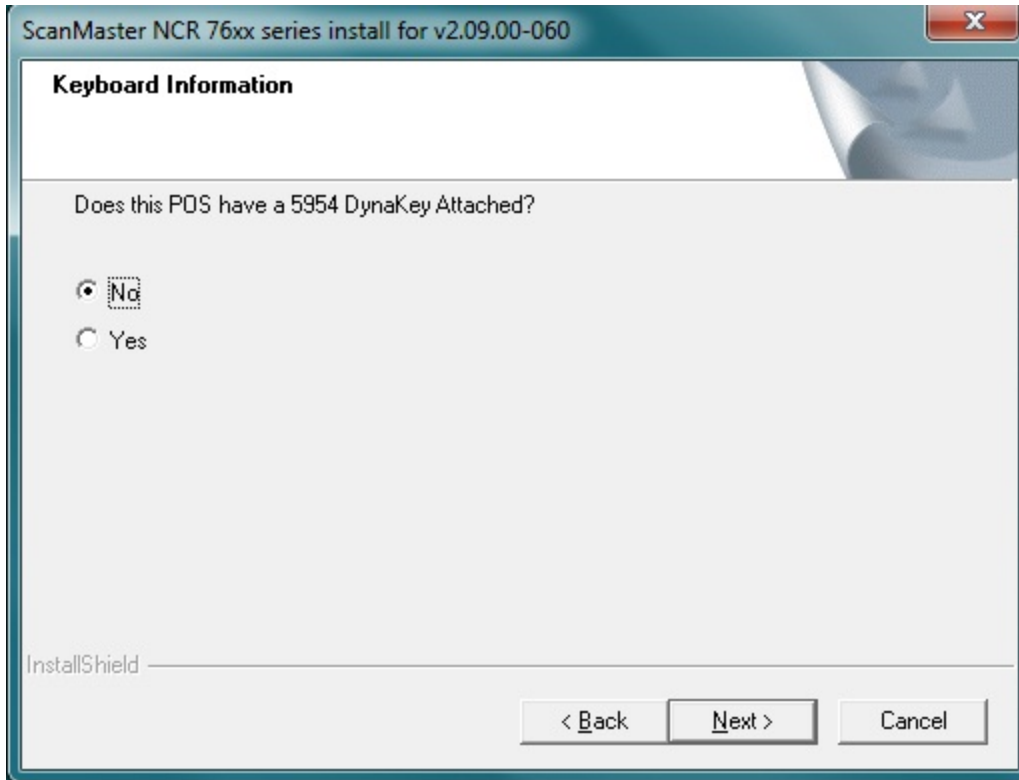
POS install screens:



Installing ScanMaster on the NCR XR7 (7702) using POSReady 7



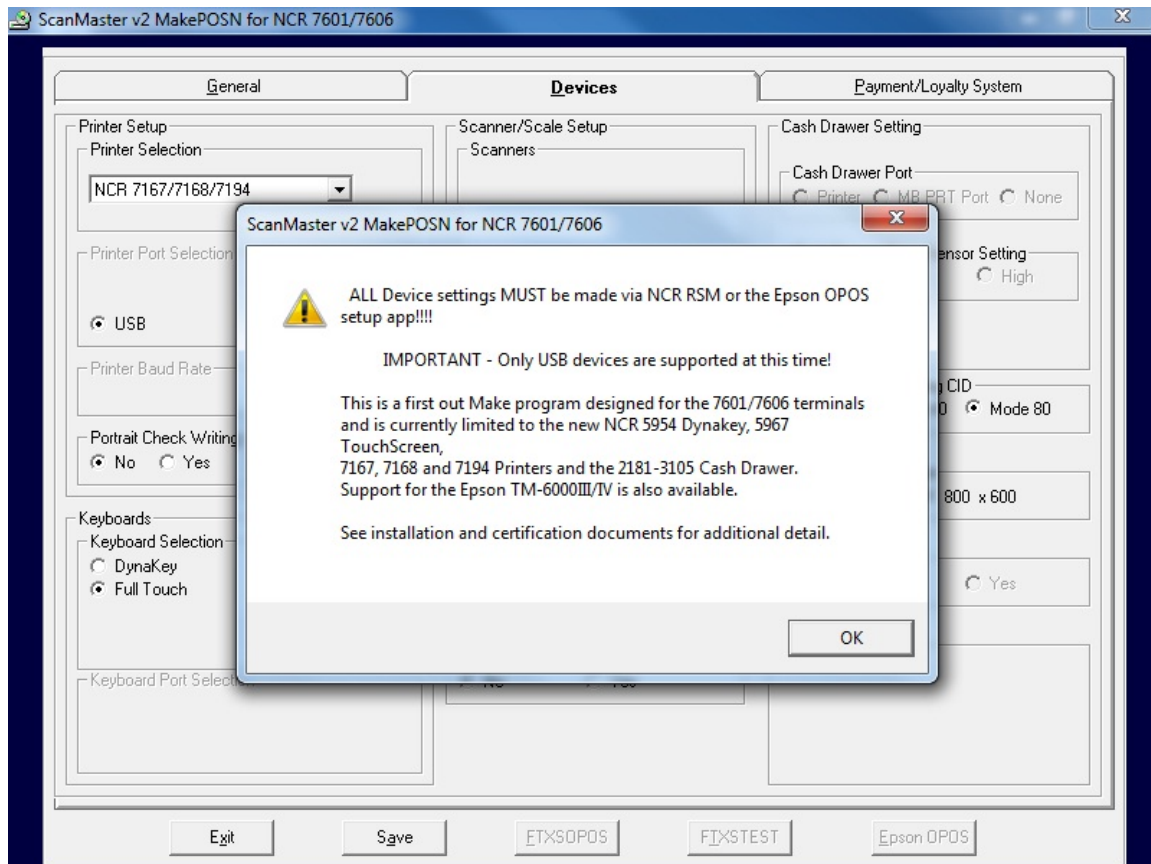
## Installing ScanMaster on the NCR XR7 (7702) using POSReady 7



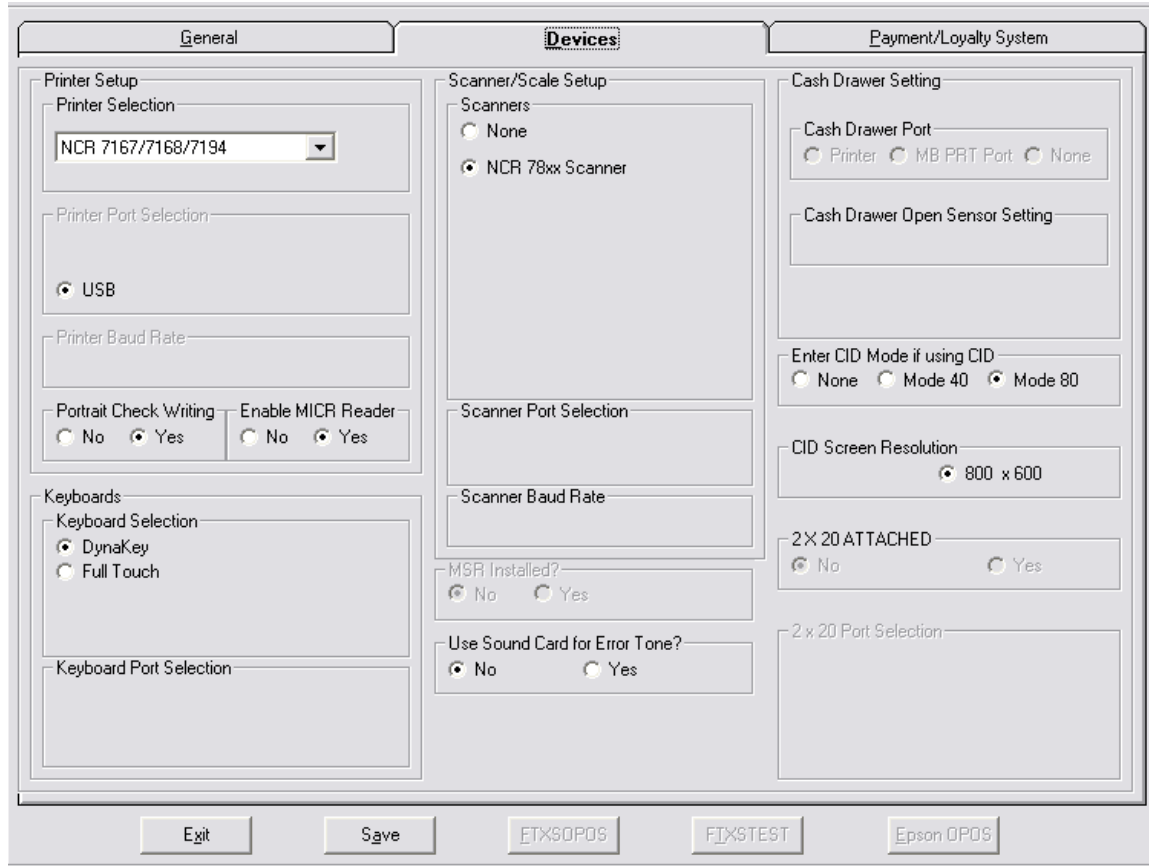
Upon completion of the POS install, a new MakePOSN program will run. Set devices as normal. Note: This is a limited, first out version of the program and is only set for those devices certified at the time of this release.

Note: Manually edit `c:\regstart.dat` and add `\TOUCHSND` to support beeps on touch.

## Installing ScanMaster on the NCR XR7 (7702) using POSReady 7



## Installing ScanMaster on the NCR XR7 (7702) using POSReady 7



Note: This is just a sample screen shot and your selections should match your install options and what devices are attached. The MakePOSN program should only be run after the Device Profiles are installed. The ScanMaster install will have installed the Device Profiles prior to running the MakePOSN program.

Once the POS is installed the ScanMaster application should run. The POS application will most likely come up with a device error. This is expected. Close the ScanMaster POS application and run the NCR RSM application by double clicking the RSM LE icon on the desktop.

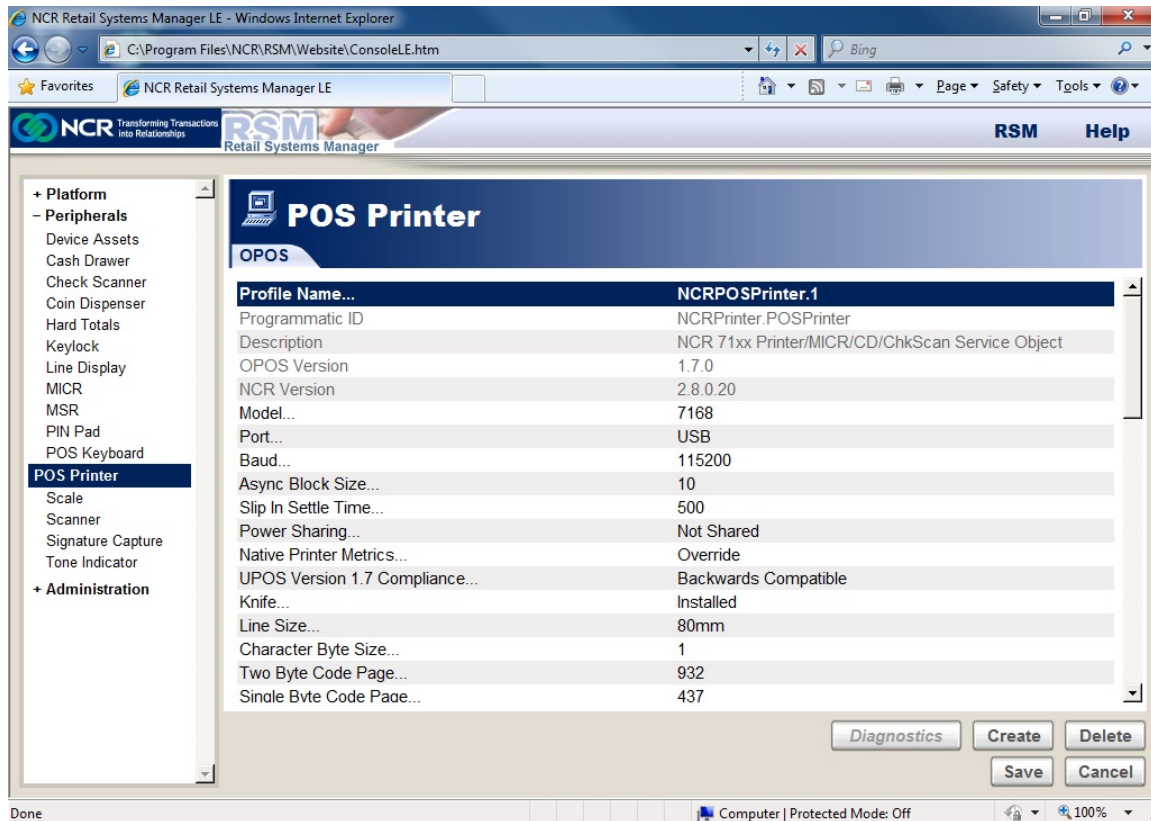
After completion of the ScanMaster POS install go back into Control Panel, Action Center and uncheck all of the notification options.

### Setup Devices:

The following devices profiles were installed by the ScanMaster Install: NCRCashDrawer.1, NCRMICR.1, NCRPOSPrinter.1, NCRScale.7872, NCRScanner.7872 and NCRToneIndicator.1. Other profiles were installed via the RSM install but only those listed above are currently supported by ScanMaster. Changing to other profiles will cause device failures in ScanMaster.

## Installing ScanMaster on the NCR XR7 (7702) using POSReady 7

Some of the above profiles should work as is, however, some profiles such as NCRPOSPrinter.1, NCRScale.7872 and NCRScanner.7872 may need changed depending on which printer or scanner/scale is attached to the POS. It is not the intention of this document to document how to use the RSM LE setup. Information on this can be found on the NCR website. That said, the device setup is fairly straight forward and the following screen provides an example on device setup.



Once you have chosen the correct profile (see choices above), you normally will only have to choose the correct Model number of your device. Always select USB as your Port. For the 7168 printer, there are some additional settings to choose single or double sided printing. If you want double sided printing go to the Two Sided Thermal Mode Option and select Double sided Automatic Split Receipt. (This requires special printer paper).

Following are the scan tags and sequences to program the 78xx scanners. Once the OPOS devices are setup and programmed the POS should be ready for use.

78XX Scanner programming tags:

To Program the 7874 / 7878 for ScanMaster

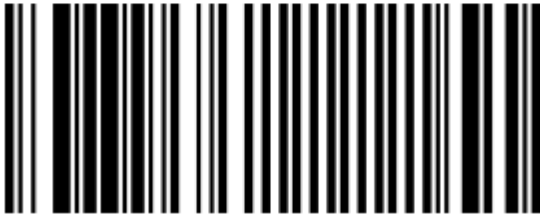
Installing ScanMaster on the NCR XR7 (7702) using POSReady 7

(Start)

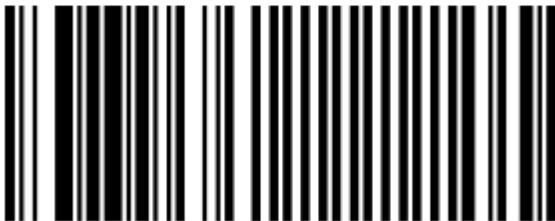
Reset



Default



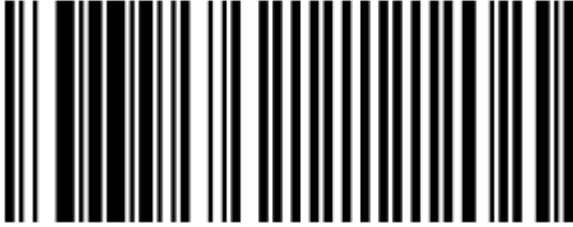
Programming Mode



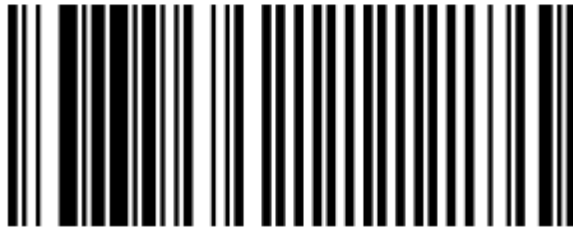
Installing ScanMaster on the NCR XR7 (7702) using POSReady 7

(Set to USB Communication Protocol)

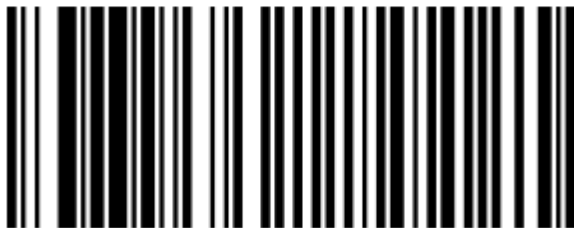
Hex 1



Hex 0



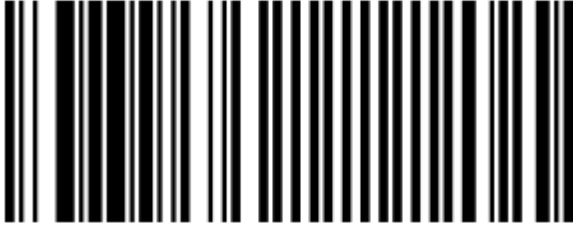
Hex D



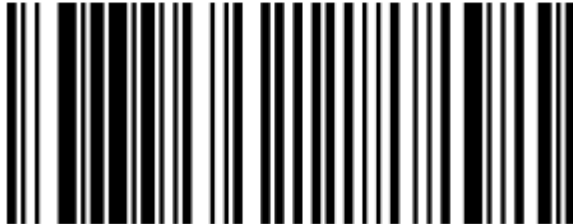
Installing ScanMaster on the NCR XR7 (7702) using POSReady 7

(Enable periodical codes)

Hex 1



Hex 3

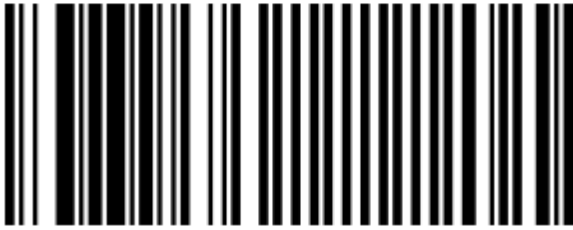


Hex E

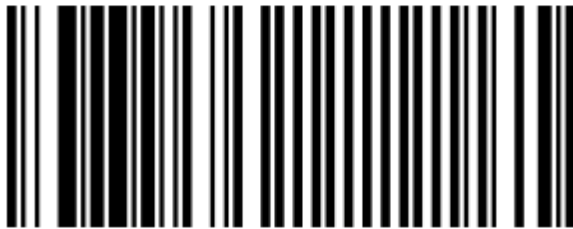


Installing ScanMaster on the NCR XR7 (7702) using POSReady 7

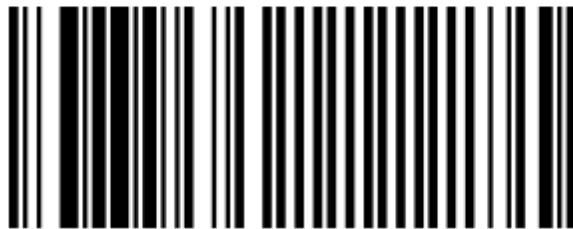
Hex 1



Hex 2



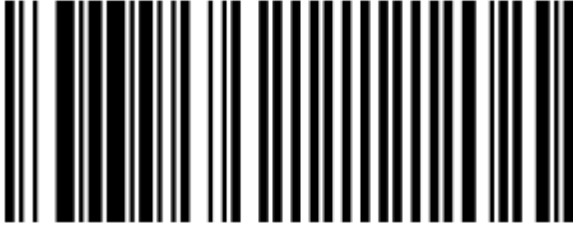
Hex 0



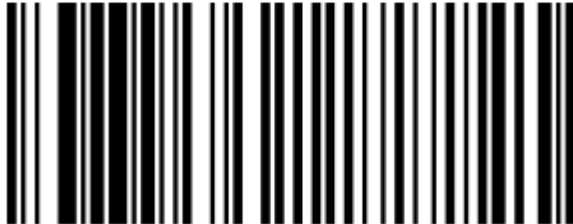
Installing ScanMaster on the NCR XR7 (7702) using POSReady 7

(Enable Interleaved 2 of 5)

Hex 1



Hex 5

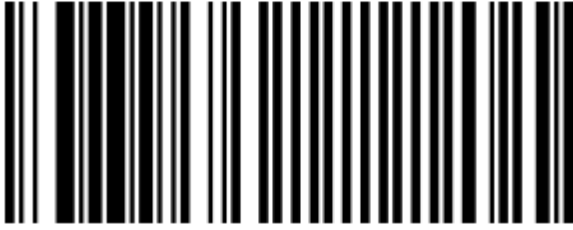


Hex A



Installing ScanMaster on the NCR XR7 (7702) using POSReady 7

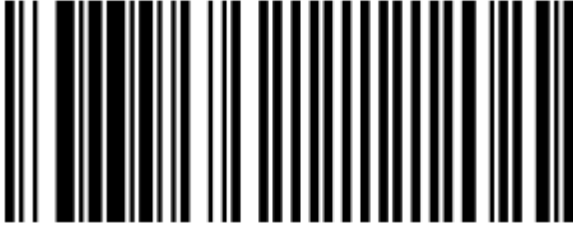
Hex 1



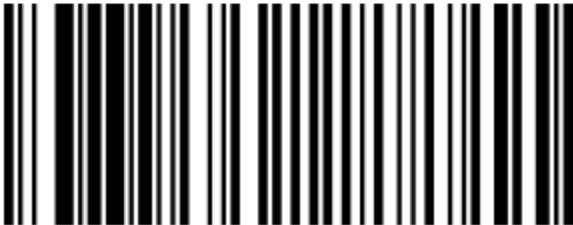
Installing ScanMaster on the NCR XR7 (7702) using POSReady 7

(Enable Code 128)

Hex 1



Hex 7

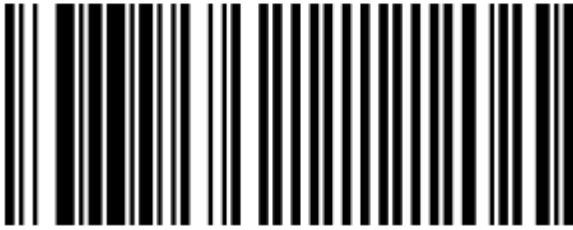


Hex A



Installing ScanMaster on the NCR XR7 (7702) using POSReady 7

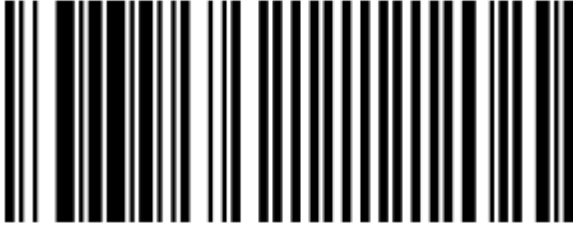
Hex 1



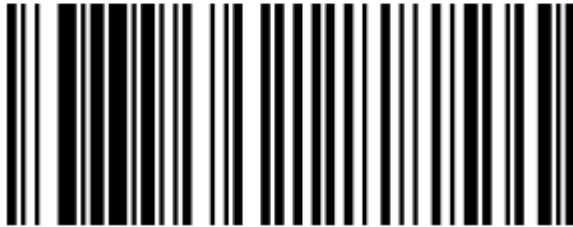
Installing ScanMaster on the NCR XR7 (7702) using POSReady 7

(Enable DataBar)

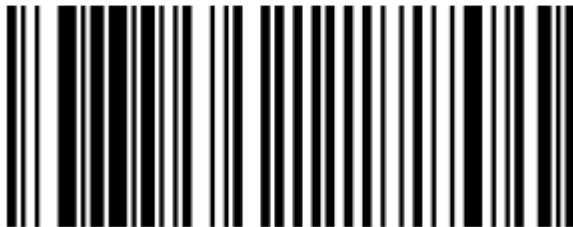
Hex 1



Hex 8

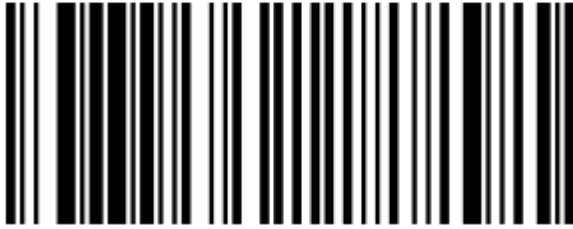


Hex A



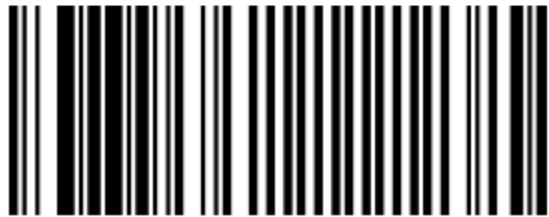
# Installing ScanMaster on the NCR XR7 (7702) using POSReady 7

Hex 3



(Finish)

Save and Reset





© Retalix, Inc. 2015

Retalix, Inc. endeavors to ensure that the information in this document is correct and fairly stated but does not accept liability for any error or omission.

The development of Retalix products and services is continuous and published information may not be up to date. It is important to check the current position with Retalix. This document is not part of a contract or license, save insofar as may be expressly agreed.