



- *Retail BackOffice*
- *RBO 4.4 Release Notes*
- 
- 
-

## **RBO 4.4 Release Notes**

<b>Date of Issue</b>	<b>Product Identification Number</b>	<b>Part Number</b>	<b>Brief Description</b>
May 2003	45001/072	89000135	Initial Release – 4.2
November 2004	45201/072	NPN	4.3 Release
March 2005	45201/072	89000206	4.4 Release

**©Copyright StoreNext Retail Technologies LLC 1995-2005  
All rights reserved**

This publication is protected by federal copyright law into any human or computer language in any form or by any means, electronic, mechanical, magnetic or manual. No part of this publication may be copied or distributed, stored in a retrieval system, or translated or otherwise, or disclosed to third parties without the express written permission of StoreNext Retail Technologies LLC.

StoreNext Retail Technologies LLC makes no representation or warranties with respect to the contents hereof, and specifically disclaims any implied warranties of merchantability or fitness for a particular purpose. StoreNext Retail Technologies LLC further reserves the right to revise this publication and to make changes from time to time in the contents hereof without obligation of StoreNext Retail Technologies LLC to notify any person or organization of such revision or changes.

StoreNext Retail Technologies LLC has prepared this manual for use by users, authorized third parties and personnel of StoreNext Retail Technologies LLC as a guide to the proper installation, operation, customization and/or maintenance of StoreNext Retail Technologies LLC equipment and software. The drawings and specifications contained herein are the property of StoreNext Retail Technologies LLC.

Address comments and corrections to:

StoreNext Retail Technologies LLC  
Software Program Director  
6100 Tennyson Parkway  
Suite 130  
Plano, Texas 75024

## Table of Contents

Table of Contents .....	2
Retail BackOffice Release Notes .....	4
Installation/Update information .....	4
General .....	4
Installing RBO for ISS45 .....	5
V8 .....	5
V7 .....	5
Installing RBO for NCR ACS .....	6
Installing RBO for NCR ScanMaster .....	6
Updating RBO .....	6
What's New in 4.04.00 .....	7
Item Maintenance Enhancements .....	7
+/- Price Change .....	7
Multiple Item Ignore .....	7
Re-pricing by Target Gross Margin % .....	8
Simple Query Wizard for Reports .....	9
User Defined Exports .....	10
Report Description Parameter .....	11
Item Contribution Report .....	12
Zero Movers By Date Range Report .....	12
Promotion Contribution Report .....	12
Menu Reorganization .....	12
Edit Grid Columns Changes .....	12
Clear All Constants .....	13
Zero Padding on Order Code .....	14
Item Group Code Pricing .....	14
Item Duplication .....	15
ScanMaster Department Flags .....	16
Stage and Release Performance Enhancements .....	17
Item and Batch Staging .....	17
V8 Release Process for ISS45 V8.0.8+ .....	17
Host Support .....	18
Host ID Maintenance .....	18
SIL Batch Export .....	18
SIL Support of Free Item Value for ScanMaster .....	18
CIX Vendor File Support .....	18
SILSetBatchIgnoreFlag for Host batches .....	18
Label Printing .....	19
Output Label Info to a Database Table .....	19
Receiving .....	19
Adjustments on invoices .....	19
Reports .....	19
Menu Access to Invoice Import Log File .....	19
Hold Price Receiving .....	19

Updating Cost when Importing Invoices .....	19
Inventory Management .....	20
Import of Flexible Data Collect files .....	20
Stock Count Maintenance .....	20
Import of RGIS inventory files .....	20
Valuation Reports by Session .....	20
FM Enhancement .....	20
FM Flexible Data Collect.....	20
ISS45 Release Compatibility .....	21
Resolved Issues .....	22
Additional Considerations .....	27
ScanMaster Considerations.....	28

## Retalix BackOffice Release Notes

<b>Release:</b>	<b>4.04.00</b>			
<b>Date:</b>	February, 2005			
<b>Goal of Release:</b>	General Release			
<b>O/S Support:</b>	Windows 2000 Windows 2003 Server, Windows XP Professional			
<b>DB Support:</b>	SQL Server 2000 Standard Edition Service Pack 3			
<b>POS Type</b>	<b>ISS45 V7</b>	<b>ISS45 V8</b>	<b>ScanMaster</b>	<b>NCR ACS</b>
<b>Rel. Support</b>	7.7, 7.8, 7.0.8, 7.0.9	8.4.6, 8.0.6, 8.0.8, 8.1.0	2.1	6.0

\* ISS45 refers to the release of Retalix POS sold through the dealer channels. StoreLine is the Retalix POS sold to direct customers. This document refers to ISS45 but the two are treated the same.

## Installation/Update information

### **General**

Internet Explorer 5.5 must be installed prior to installing RBO. The installation is found on the RBO Installation CD in the \Other\Microsoft\Internet Explorer 5.5 folder.

If the computer on which RBO Server is installed is not physically connected to a network, RBO services will not start and RBO will not run. Be sure the RBO computer is connected to a network, even if only to a hub with no other active systems.

Please ensure that a back up of the databases has been performed prior to executing an update.

The RBO default user name is **Admin**. You should add additional users through security maintenance. See the RBO Users Guide for instructions.

SQL Server Service Pack 3 is included on the Retalix BackOffice Installation CD in the \Other\Microsoft\SQL Server 2000 SP3a folder.

Stylus has been upgraded to version 2.7. Please update existing versions from the \Stylus folder on the RBO installation CD.

A Stylus Patch has been included on the RBO installation CD. Execute the install.bat file in the \Stylus\\_Apply\_this\_patch\_after\_setup\_ folder to apply the patch.

Users are not automatically granted Read/Write/Execute permissions to shares in Windows Server 2003. When installing Stylus and sharing the Insignia folder as per the installation instructions, you must modify the share permissions to allow users and administrators Read/Write/Execute permissions.

## ***Installing RBO for ISS45***

### **V8**

RBO Server must be installed on MFS1.

The ISS45/StoreLine parameter “Update All Mix and Match Groups When One PLU Changed” must be set to **No**. If this parameter is set to **Yes**, the “Send PLU File to POS” will return errors before it is completed, will take many hours to complete and when the build completes, RBO and the POS will be out of sync.

The following parameters must be set in ISS45:

- General System Parameters
  - Store>Front Office>PLU and Batch>Batch Options
    - Use Fast PLU Batch Execution = **Yes**
  - Store>Front Office>PLU Options>Validation
    - Force short and long description to match = **No**
  - Store>POST>Monetary>Frequent Shopper>Frequent Shopper Mode
    - Frequent shopper type
      - **Enhanced frequent shopper (type2)**

*Reboot the system after making this change*

The PLU Maintenance and PLU Batch features from the PLU Management menu in ISS45 Office are removed from the menu system. This is done to prevent data entry outside of RBO and keep the files synchronized.

ISS45 Office Client must be installed where a RBO client is installed.

To accommodate the additional disk space that movement history will require, it is recommended that RBO be installed on a large – 10gb or greater – partition.

To accommodate existing servers that have a computer name that begins with a number, the host file must be updated to include an entry for MFS1 that corresponds to the server’s IP address.

The entry should resemble: 192.1.1.10 MFS1

SQL Server 2000 must be installed according to the ISS45/StoreLine Office Installation instructions. Specifically, the Collation Settings must be set for **Binary order for use with the 850 (Multilingual) Character Set**. Failure to install SQL Server correctly will render the Fast PLU Batching feature in RBO incompatible with ISS45/StoreLine.

### **V7**

RBO Server may be installed on MFS1, MFS2 or any stand-alone Windows 2000 server. The Retailix StoreLine Communications Repository must be installed on MFS1. Refer to the [Getting Started Guide](#) for installation instructions.

ISS45 Office Client must be installed on any RBO system where item maintenance will be performed.

## ***Installing RBO for NCR ACS***

The software to communicate to the ACS server from RBO is provided in the \Other\RBO\_ACS Communications folder on the Installation CD. Installation instructions are provided in the file: [ACS Communications Getting Started Guide.pdf](#).

## ***Installing RBO for NCR ScanMaster***

Please refer to the Configuring For ScanMaster 2.1.rtf file in the \Other\ScanMaster folder on the installation CD.

Beginning with this release, RBO is no longer compatible with ScanMaster 1.2 or 2.0 due to architecture changes in ScanMaster.

RBO replaces the functionality of Enhanced Pricing in ScanMaster 2.1. You must disable Enhanced Pricing in ScanMaster when installing RBO.

## ***Updating RBO***

When updating RBO for ISS45, the RBO StoreLine Communications must be updated. When RBO Server is installed on MFS1, the installation will automatically install or update the RBO StoreLine Communications application. If you are not installing RBO Server on MFS1 (V7 only), you must install the StoreLine Communications application separately on MFS1. The setup is found on the CD under Other, RBO StoreLine Communications. Initiate the update by launching Setup.exe on the CD from the ISS45 POS Server.

When updating RBO, if any FM Parameters include the field 72. pkg size, the parameter must be edited before using. Field 72 has been renamed pkg count and will cause the FM application to crash, requiring a restart of the FM service.

When updating RBO from 4.2.X or earlier to RBO 4.3.3, reports have changed significantly and existing queries may not be updated. Please review the available reports and report queries. Rebuild new queries as required.

After updating from RBO 4.2.X or earlier to RBO 4.3.3, the parameter “First Day of Movement Week” has been changed. Two parameters, “Ad Week Start Day” and “Business Week Start Day”, replace the old parameter. The default value for these parameters is Sunday. The parameter “Business Week Start Day” should be changed to match the older “First Day of Movement Week” value so that weekly reports will start on the same date.

When updating RBO for ACS, the RBO\_ACS Communications must be updated. This is found on the CD under Other\RBO\_ACS Communications. Initiate the update by launching Setup.exe on the CD from the ACS Primary and Secondary Servers.

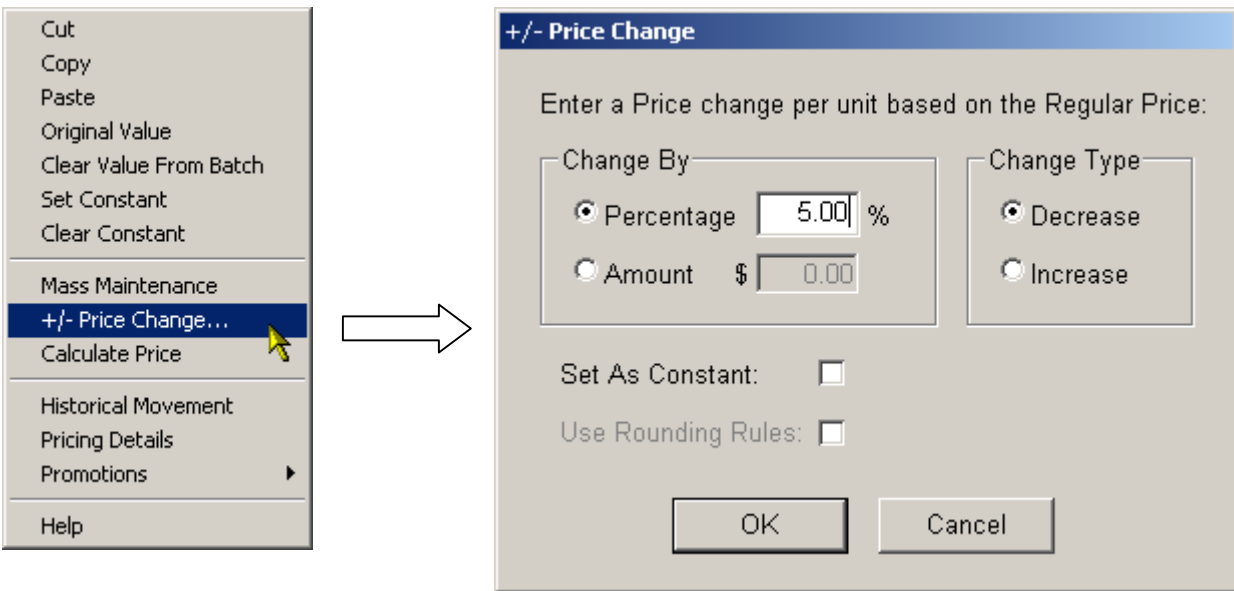
Due to changes in the **Movement Extract For Host** process, any extract Back Office Task will need to be recreated.

## What's New in 4.04.00

### Item Maintenance Enhancements

#### +/- Price Change

- The Percent Price Change feature has been expanded to be a +/- Price Change, which includes changing by percentage or a dollar amount.
  - When the price is increased, the price is rounded based on the Item Price Rounding table (See page 224 of RBO Users Guide for details on Item Price Rounding)



This feature may be used to increase or decrease a group of items through Mass Maintenance or by setting the change as a constant. For example: Re-price all the items within the Vitamin Department for a 5% decrease.

#### Multiple Item Ignore

- When multiple items are displayed in Grid, a user may highlight one or more item and select Ignore Item from the Edit menu to ignore all the selected items at one time.

## Re-pricing by Target Gross Margin %

- Automatic Re-Pricing by Target Gross Margin % is fully enabled
  - Re-pricing reflects the Pass-On Percentage, Rounding Rules (See Item Price Rounding) and Minimum Auto Price change
  - When the price is changed due to Automatic Re-Pricing, the field color is blue instead of red, indicating that the price changed automatically
  - A menu option “View> Price Calculation” will display the calculation used to determine the price change
- Automatic Re-Pricing and +/- Price Change features are mass maintainable so that a group of items may receive the same calculation to regenerate the price

Item Number: 0004900000042 Supplier ID: 00000020 Order Code: 00000000042  
 POS Description: CHERRY COKE Mix/Match Code: 0 Base Cost: 1.1100  
 Item Description: CHERRY COKE Unit Cost: 1.1100  
 Dept Number: 12 - TAXABLE GROCERY Unit Cost: 1.1100  
 Price: 1 / 1.49 #Promos: 0 Item Group Code: 0 Gross Margin%: 25.50

Original Price

Bonus Buy Pricing  
 Description:   
 Type: No comparison  
 Date: 1/1/1900  
 Price: 0 / 0.00

Frequent Shopper Info  
 Price: 0.00  
 Item Qty Limit: 0

Auto Pricing  
 Target GM %: 21.00  
 Pass-on %: 100.00  
 Min Auto Price Change: 0.05

OEM Parameters  
 Price Group: None  
 Excl from Min Purch:  Item Points: 0

MSRP:   
 Hold Price: 1 / 0.00

Pricing Item Other Pricing Receiving Ordering Movement Shelf/Label/Scales Department/Items Item Flags

Set the Target GM%, Pass-on %, Min Auto Price Change

Item Number: 0004900000042 Supplier ID: 00000020 Order Code: 00000000042  
 POS Description: CHERRY COKE Mix/Match Code: 0 Base Cost: 1.1100  
 Item Description: CHERRY COKE Unit Cost: 1.1100  
 Dept Number: 12 - TAXABLE GROCERY Unit Cost: 1.1100  
 Price: 1 / 1.95 #Promos: 0 Item Group Code: 0 Gross Margin%: 43.08

The price is changed automatically to reflect new GM% and rounding rules

From	To	Dollars	Dimes	Pennies
0.00	0.99			9
1.00	4.99		9	5
5.00	100.00		5	0

Price Rounding Table

Pricing Calculation

Pass-On Adjustment = Net Adjustment \* Pass-On Pctg  
 Pass-On Adjustment = 0.1900 \* 100.00% = 0.0000

New Price = (Base Cost - Pass-On Adjustment) / (100% - 21.00%)  
 New Price = (1.1100 - 0.0000) / (100% - 21.00%) = 1.39

New Price (using Rounding Table) = 1.95

Make Price Change? = ABS(New Unit Price - Reg Unit Price)  
 Make Price Change? = ABS(1.950 - 1.490) >= 0.05 = Yes

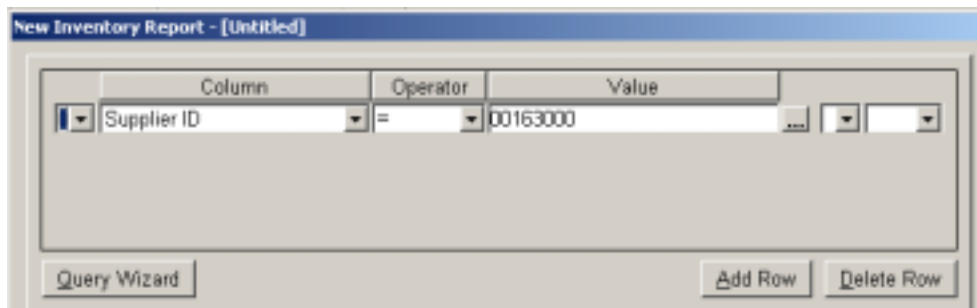
You can view the calculation used to generate the price

## Simple Query Wizard for Reports

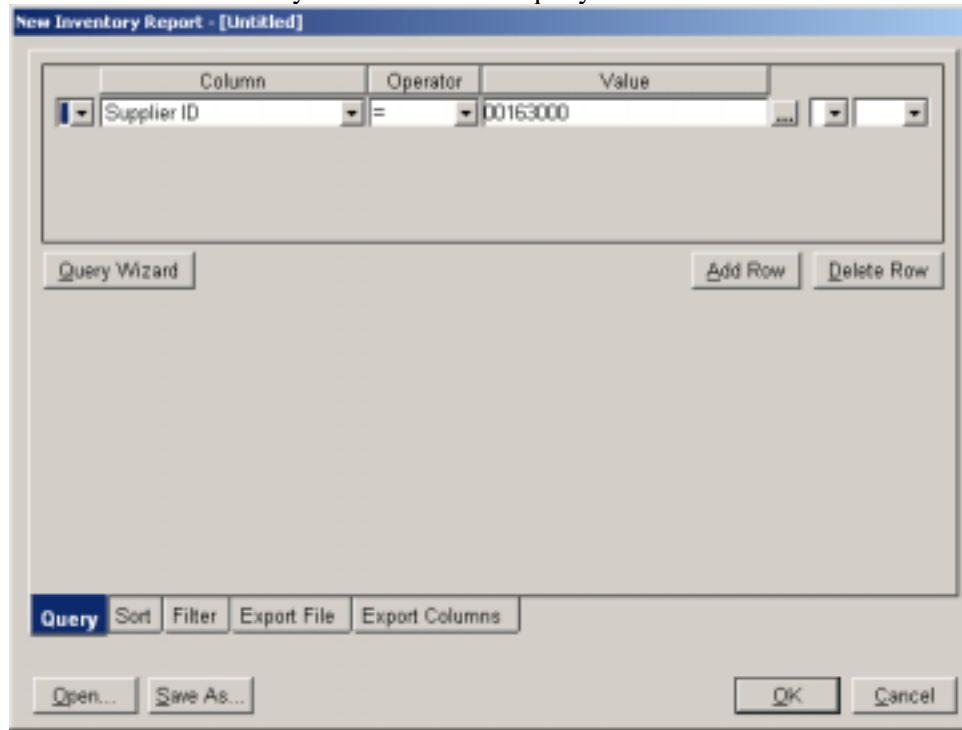
- Users may now use the Simple Query Wizard to build queries for Item Maintenance reports
  - Queries may be saved from the Simple Query Wizard
  - Clicking the Advanced... button will launch the Query Builder window
- Item Reports may be queried by all database fields





Clicking OK populates the traditional query wizard window with selected options:

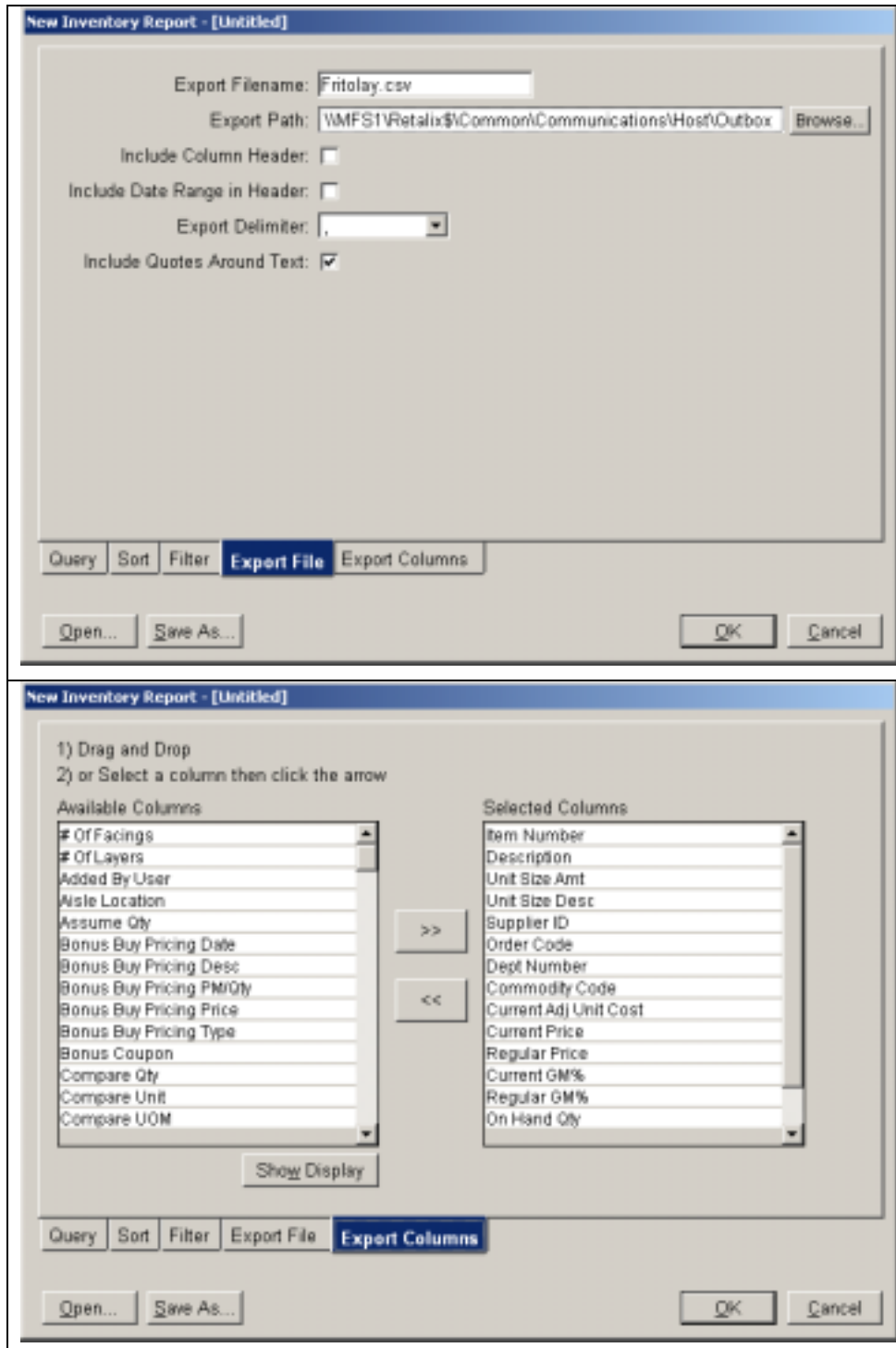


- Sorts and Filters may be saved with the query:



## User Defined Exports

- User Defined Exports may be created and used as part of the reporting process.
- To create an export file based on a report:
  - Choose the report to export
  - Define the query, sort and filter as desired
  - Enter the export file specifics
  - Choose the columns to export
  - Save query if you wish to reuse the settings
  - Print the report to the screen and export the displayed report using the  (Export) icon.
  - Any time a report is displayed, you may change or set the export parameters by clicking on the  (Export Options) icon.



## Report Description Parameter

- A new global parameter – Item Description to Use on Reports – Item Description or POS Description – sets the description that will print on all RBO reports. This eliminates the need for multiple versions of the same report and maintains consistency between the descriptions used on the various reports

## Item Contribution Report

- The Item Contribution report has been split into two different reports – By Sales, By Profit
  - By Sales gives the contribution to Sales of the items in the group
  - By Profit gives the contribution to Profit of the items in the group

## Zero Movers By Date Range Report

- This is a new report that will allow a user to report on items that did not move during a given date range.

## Promotion Contribution Report

- This is a new report that will display the total movement and sales prior to subtracting any promotions applied to an item, the promotion movement and markdown amount for that item and the net sales after subtracting the promotion markdown.
- The Net Movement and Sales is the movement and sales reflected on all other movement reports.

Item Number	Description	Unit Size Description	Supplier ID	Dept No	Rpt Code	All Flag On	Total Movement	Total Sales	Promo Movement	Promo Markdown	Net Sales
-------------	-------------	-----------------------	-------------	---------	----------	-------------	----------------	-------------	----------------	----------------	-----------

## Menu Reorganization

- Menus in item maintenance have been reorganized
  - Pricing Details is under the View Menu
  - Pricing Calculation is under the View Menu
  - +/- Price Change, Calculate Price and Update Inventory Count are grouped with Mass Maintenance
  - Mass Maintenance, Calculate Price and +/- Price Change are on the Right-click Menu

## Edit Grid Columns Changes

- Edit Grid Column Settings screen change
  - The Up and Down arrows work in Select Columns screen
  - The default key is OK.
  - Cancel button has been removed
  - Moved action buttons to the side of the screen
  - Added a Current column

### **Clear All Constants**

- A new menu option – Clear All Constants – has been added to the context (right-click) and Edit Menus. This will clear all existing constants at one time.

## Zero Padding on Order Code

- When using the SIL Order Code Trim feature, the Order Code will be zero-filled to the left up to the Trim Order Code Size value when key-entering the Order Code. This is to retain consistency between Item Maintenance data entry and SIL processing

Trim Order Code Flag:

Trimmed Order Code Length:

Set Trimmed Order Code length to the size desired.

Maint Type	Primary	Supplier ID	Supplier	Warehouse	Order Code	Sequence Number	Case Pack	Receiv Unit
1	<input checked="" type="checkbox"/>	00000020	Coke		28457	0	1.0000	case
2	<input type="checkbox"/>	00000020	Coke		000000000042	0	1.0000	case

Key in new Order Code

Maint Type	Primary	Supplier ID	Supplier	Warehouse	Order Code	Sequence Number	Case Pack	Receiv Unit
1	<input checked="" type="checkbox"/>	00000020	Coke		0028457	0	1.0000	case
2	<input type="checkbox"/>	00000020	Coke		000000000042	0	1.0000	case

Order Code is padded to match parameter

## Item Group Code Pricing

- Items group with the same Item Group Code can be changed with a single price change

Item Number: 0003663200104    Supplier ID: HYVEE    Order Code: 55514

POS Description: DANNON YOGRT    Mix/Match Code: 3    Base Cost: 5.5500

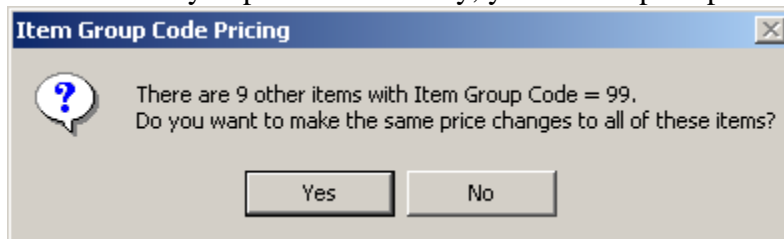
Item Description: DAN TRAD STRAWBERRY YOGURT    Commodity Code: 0    Unit Cost: 0.4625

Dept Number: 901 - Milk    Report Code: 0    Adj Unit Cost: 0.4625

Price: 1 / 0.79 #Promos: 0    Item Group Code: 99    Gross Margin%: 41.46

Price changed on item in group 99

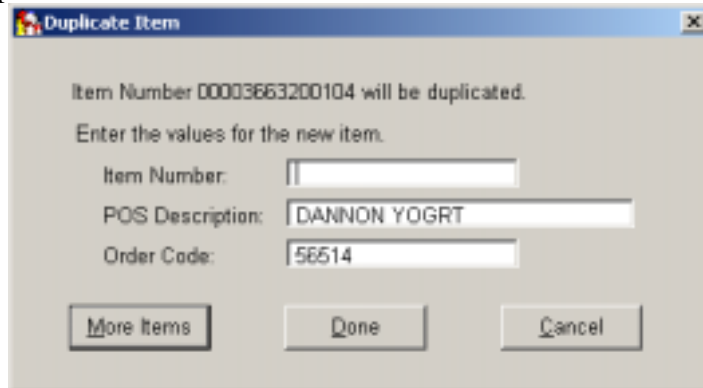
- When you put the item away, you will be prompted with:



- Answering Yes adds the grouped items to the batch with the same price change.
- Choose Review Batch to review the newly added items.
- Make additional changes as needed.

## Item Duplication

- A new feature to add groups of new items quickly by selecting an existing item and ‘duplicating’ it with a new Item Number (UPC), POS Description and/or Order Code.
- Query or add item to be duplicated.
- Right-click the item and choose Duplicate Item... to see the following prompt:



- Type the new UPC (required), POS Description and Order Code (if different).
- Click on More Items or press Enter to continue to add more new items.
- Click on Done to save last one and close dialog box.
- Click on Cancel to exit dialog box without saving the current item.
- The new item(s) are exactly like the original item except for the prompted changes.
- Additional changes may be made to the items within the batch.

## ScanMaster Department Flags

- The display and maintenance of department flags has been enhanced within RBO Item Maintenance to provide the results of changing a flag whether the POS is configured to follow the department or the item.
- A new global parameter – Item Status Information follows Item File or Dept File? – tells item maintenance how to display and handle overriding the department default.
- An item's flags depend on the department settings. When the global parameter is set to follow the item (the default) and the item's Dept Override is not set, the item, department and result flags will be the same and inactive:

Dept Override:

Department Flags

	Item	Dept	Result		Item	Dept	Result
Food Stamp:	<input checked="" type="checkbox"/>	<input checked="" type="checkbox"/>	<input checked="" type="checkbox"/>	Discount 1:	<input checked="" type="checkbox"/>	<input checked="" type="checkbox"/>	<input checked="" type="checkbox"/>
Tax 1:	<input type="checkbox"/>	<input type="checkbox"/>	<input type="checkbox"/>	Discount 2:	<input type="checkbox"/>	<input type="checkbox"/>	<input type="checkbox"/>
Tax 2:	<input type="checkbox"/>	<input type="checkbox"/>	<input type="checkbox"/>	Discount 4:	<input type="checkbox"/>	<input type="checkbox"/>	<input type="checkbox"/>
Tax 3:	<input type="checkbox"/>	<input type="checkbox"/>	<input type="checkbox"/>	Discount 5:	<input type="checkbox"/>	<input type="checkbox"/>	<input type="checkbox"/>
				Exclude Min Pur:	<input type="checkbox"/>	<input type="checkbox"/>	<input type="checkbox"/>

- If the Dept Override flag is checked and a flag is changed from the department default, the Result column will indicate the change:

Dept Override:

Department Flags

	Item	Dept	Result		Item	Dept	Result
Food Stamp:	<input type="checkbox"/>	<input checked="" type="checkbox"/>	<input type="checkbox"/>	Discount 1:	<input checked="" type="checkbox"/>	<input checked="" type="checkbox"/>	<input checked="" type="checkbox"/>
Tax 1:	<input type="checkbox"/>	<input type="checkbox"/>	<input type="checkbox"/>	Discount 2:	<input type="checkbox"/>	<input type="checkbox"/>	<input type="checkbox"/>
Tax 2:	<input type="checkbox"/>	<input type="checkbox"/>	<input type="checkbox"/>	Discount 4:	<input type="checkbox"/>	<input type="checkbox"/>	<input type="checkbox"/>
Tax 3:	<input type="checkbox"/>	<input type="checkbox"/>	<input type="checkbox"/>	Discount 5:	<input type="checkbox"/>	<input type="checkbox"/>	<input type="checkbox"/>
				Exclude Min Pur:	<input type="checkbox"/>	<input type="checkbox"/>	<input type="checkbox"/>

- If the global parameter is set to follow the department, the POS behavior is to treat the item flags as individual overrides, reversing the department settings. RBO will display the result:

Dept Override:

Department Flags

	Item	Dept	Result		Item	Dept	Result
Food Stamp:	<input checked="" type="checkbox"/>	<input checked="" type="checkbox"/>	<input type="checkbox"/>	Discount 1:	<input checked="" type="checkbox"/>	<input checked="" type="checkbox"/>	<input checked="" type="checkbox"/>
Tax 1:	<input type="checkbox"/>	<input type="checkbox"/>	<input type="checkbox"/>	Discount 2:	<input type="checkbox"/>	<input type="checkbox"/>	<input type="checkbox"/>
Tax 2:	<input type="checkbox"/>	<input type="checkbox"/>	<input type="checkbox"/>	Discount 4:	<input type="checkbox"/>	<input type="checkbox"/>	<input type="checkbox"/>
Tax 3:	<input type="checkbox"/>	<input type="checkbox"/>	<input type="checkbox"/>	Discount 5:	<input type="checkbox"/>	<input type="checkbox"/>	<input type="checkbox"/>
				Exclude Min Pur:	<input type="checkbox"/>	<input type="checkbox"/>	<input type="checkbox"/>

## ***Stage and Release Performance Enhancements***

### **Item and Batch Staging**

Significant improvements have been made in the speed with which items are staged to be applied to the POS. The changes will be evident both in individual item staging (Immediate Item Maintenance) and when staging batches.

### **V8 Release Process for ISS45 V8.0.8+**

Beginning with ISS45 version 8.0.8, the release process for releasing batches has been improved by taking advantage of the built-in Fast PLU Batch functionality of the V8 POS system. These performance gains will be realized when releasing batches of more than 500 items from Batch Manager or Release manager; releasing less than 500 items using this method will not result in the Fast PLU Batch feature, however, due to changes on ISS45 V8.1.0.0, the ActiveX apply has been improved so there will be some batch apply improvements over earlier versions of V8. Immediate Maintenance and batches set to Auto Release during the stage process will not be impacted by these changes.

Note: Due to limitations in the V8 General Batch process, if Price Lists are in use, the current (pre-4.4) release process will be used.

Due to the nature of these changes, the progress bar will only be displayed when releasing batches with fewer than 500 items. Instead animated icons are used for Stage and Release.

Stage animated icon




Release animated icon

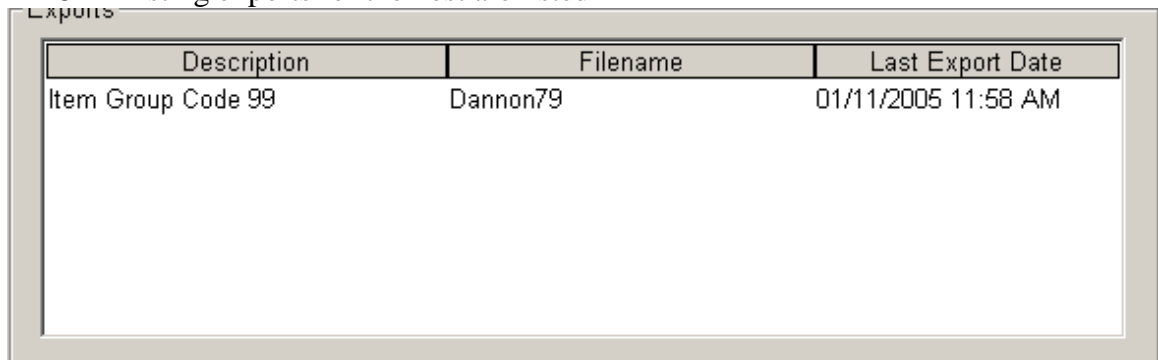


Performance gains are greater with bigger batches.

## Host Support

### Host ID Maintenance

- The ability to create User Defined Exports has been added to the Host ID Maintenance application.
- New toolbar icons allow a user to build a new export:  (Add Export/Delete Export)
- Use query builder to create and save the query/sort/filter/export information. Since this is not based on a report, the user can choose exactly the columns to export in the order they wish.
- Existing exports for the host are listed



Description	Filename	Last Export Date
Item Group Code 99	Dannon79	01/11/2005 11:58 AM

- The export is available under the new Back Office Task – Host Exports – and may be built and scheduled.

### SIL Batch Export

- The ability to export previously imported SIL files using the SIL Batch Export Batches has been added

### SIL Support of Free Item Value for ScanMaster

- A new BA field in the SIL dictionary – BA1033 – has been added to the SIL interpreter to set the Free Item flag in ScanMaster

### CIX Vendor File Support

- An option has been created to allow dbconvrt.exe to automatically process an FX vendor file when received from CIX.
- The file can be processed using the syntax: dbconvrt HXVendor Y

### SILSetBatchIgnoreFlag for Host batches

- A new “hidden” parameter has been created that can be accessed by pressing CTRL-ALT-L called SILSetBatchIgnoreFlag that forces new batches received via SIL to be set to Ignore so they do not apply until explicitly un-ignored and staged/released.

○

## ***Label Printing***

### **Output Label Info to a Database Table**

- A new global parameter – Output Label Info to a Database Table – has been added to allow users to use non-Stylus ODBC compatible label printing programs to print shelf tags.

## ***Receiving***

### **Adjustments on invoices**

- Modified the invoice report so that when an adjustment, like a bottle or shell deposit, is configured not to affect GM%, the adjustment doesn't affect Profit Dollars
  - Two new subtotals are added to the invoice:
    - Invoice Profit Subtotal
    - Adjs Excluded from GM%
  - The Invoice Profit will be the total adjusted profit + the adjustments marked as excluded from GM%

## **Reports**

- The options for saving sorts/filters/exports with reports available in Item Maintenance are available in the Receiving Reports
- Added the Supplier Category Description to the Supplier List report

### **Menu Access to Invoice Import Log File**

- The Invoice Import Log File can now be accessed from within the Receiving and Invoice Import Maintenance menus.

### **Hold Price Receiving**

- In a hosted environment, where maintenance is primarily or exclusively permanent, a method for receiving against the Hold Price as the regular price.
- A new global parameter – Use Hold Price – has been added to enable this feature.

### **Updating Cost when Importing Invoices**

- The ability to update the current cost of an item while importing an invoice has been added to the system.
- A new supplier attribute – Accept Invoice Cost – will indicate that as an invoice is received through XML, the cost on the invoice will be checked and if it is different from the current base cost of an item, it will be added to the item with the current date as the start date.
- This feature is limited to base costs does not include allowances.

## ***Inventory Management***

### **Import of Flexible Data Collect files**

- New FM Flexible Data Collect parameters are provided for the Store Transfer Out/In, Department Transfer, Record Store Use and Record Waste features of Inventory Management.
- An import feature is written to read these files on a /Q of the parameter.
- Reports are printed automatically for Store Transfers (Out or In)

## ***Stock Count Maintenance***

### **Import of RGIS inventory files**

- An option to import inventory counts into Stock Count Maintenance has been provided for those who use 3<sup>rd</sup> party inventory services

### **Valuation Reports by Session**

- A new report for the Valuation Reports has been added that does not group the items by Supplier. The entire session is printed without interruption.

## ***FM Enhancement***

### **FM Flexible Data Collect**

- The FM Flexible Data Collect Options tab has been redesigned for clarity
- FM Flexible Data Collect now has the ability to print following a /GO or /QUIT command
  - The output file will be the raw data collect file
- The file pathname created by FM Flexible Data Collect can be passed to the application to execute following a /Quit by adding %f% as an argument in the Parameters line:

The screenshot shows a dialog box titled "Permissions" with the following fields and checkboxes:

Command	Print at	Allow	Run at	Parameters
/QUIT	<input type="checkbox"/>	<input type="checkbox"/>	Run at /QUIT Program	C:\Program\Myprogram.exe
/QUIT			/QUIT Parameters	%f%
/SUSPEND	<input type="checkbox"/>	<input checked="" type="checkbox"/>	Run at /SUSPEND Program	
/SUSPEND			/SUSPEND Parameters	
/GO	<input type="checkbox"/>	<input type="checkbox"/>	Run at /GO Program	
/GO			/GO Parameters	

- You may use the “Retailix\Backoffice” folder as the root of your path to reduce path typing and make the system “blind” to the drive letter. To do this, place the argument %ROOTDIR% at the beginning of your path:
  - Ex: %ROOTDIR%\Instore\ItemMaintenance
- Six new FM Flexible Data Collect parameters have been provided for Inventory Management. These have been specifically created to work with the import feature of Inventory Management and should not be changed. The new parameters are:
  - Store Transfer Out – Used to create a Store Transfer – Report prints
  - Store Transfer In – Used to receive a Store Transfer using Current Cost – Report prints
  - Store Transfer In With Cost – Used to receive a Store Transfer but the user enters the cost manually – Report prints
  - Department Transfer – Transfers an item’s inventory to a different department – Report does not print
  - Record Store Use – Records Store Use and decrements inventory – Report does not print
  - Record Store Waste – Records Store Waste and decrements inventory – Report does not print

## ISS45 Release Compatibility

As RBO is enhanced, certain features require enhancements to the POS before they will work properly. The table below describes those features that require specific POS releases. The releases given below indicate the minimum version of software to use the new feature.

<b>ISS45</b>	<b>ISS45 Rel</b>	<b>RBO Rel</b>	<b>ISS45 Rel</b>	<b>RBO Rel</b>
Display of Promotion Data with Launch to Promotion Manager	8.4.2.58	4.2.0	7.0.8.3	4.2.1
Creation and management of Simple Promotions through RBO.	8.0.6	4.3.0	7.0.9	4.3.3
Price List support from within RBO	8.0.6	4.3.0	N	N
X for Y\$ Frequent Shopper type support	8.0.8	4.3.1	7.0.8.3_56	4.3.1
Comparative Price Frequent Shopper Type support	N	N	7.0.8.3_56	4.3.1
Unit Price Field Support for ESL	8.0.6.0_55	4.3.1	7.0.8.3_56	4.3.1
Fast Batch Release	8.0.8	4.4	NA	4.4
	<b>RBO Release</b>			
<b>ScanMaster POS Version</b>	<b>4.1</b>	<b>4.2</b>	<b>4.3</b>	<b>4.4</b>
ScanMaster 1.2 (DOS)	Y	Y	Y	N
ScanMaster 2.0 (Windows)	Y	Y	Y	N
ScanMaster 2.1 (Windows)	N	N	N	Y

## Resolved Issues

Defect #	Defect Description
490	Resolved a problem where the POS Unit Size was not being sent correctly to ScanMaster
528	Changed the help for the POS Commodity Code field.
546	Changed Item Maintenance to protect the Limited by Qty, Limited by Price, Pos Split Qty and POS Split Price fields when editing an NSC-2 item for ScanMaster
551	Resolved a problem where a File Sync was not properly handling items in a temporary batch
563	Removed fields that are not editable in screen maintenance, like First Sold Date etc., from the FM Parameter lists so the user may not change them.
577	Resolved an SQL error in Grid View when invalid data was entered in certain fields.
959	Newly created selection criteria is now the default when returning to the print specifications window to print a report
1849	On-hand inventory is not decremented for items marked as Negative or Coupon Item
1108	FM login failure gives a more generic error – Login Failed – instead of Invalid User.
2171	Changed dbconvrt.exe to behave like SIL when trimming the Order Code to desired length. For the present, the behavior will be based on the registry setting: ...\System\Item Maintenance\FileConvert_Order_Code_Length
2248	Changed SIL processing so that cost is updated properly when the cost field is sent in both the item_dct and the fcost_dct views
2253	Provided updated documentation for installing RBO Client on an XP system
2254	Resolved a problem where a new order package was added to an item but the item was inadvertently deleted but the Order Package was still in the system
2287	Changed Grid View so the screen returns to the far left column when entering data and pressing enter to finish and go to the next line.
2288	Resolved a problem in Item Maintenance where a Price Multiple of 0 caused a program termination
2298	Changed the No Coupon Mult flag logic to follow ScanMaster logic. This includes making the flag inactive when the No Coupon flag is Y
2299	Changed the File Synchronization program to trim spaces when checking the POS descriptions to prevent inadvertent synchronization on these fields
2304	The ability to unlink a non-member promotion (Promotion/Reduction/Offer) from within RBO has been disabled. Only Promotions to which a user can link can be unlinked.
2314	Resolved a problem where the Vendor Cost Sheet Validation report would hang and not complete
2316	Changed the rounding calculation within the RBO reports for ScanMaster to more closely match the dollar totals reported by ScanMaster sales.
2319	Resolved an issue where the Invalid Receiving Day warning was causing the FM application to ‘lose itself’ when receiving items
2327	Resolved a problem where maintenance was not always being flagged as “needs attention” – Orange in batch manager.
2345	Changed logic to consider the scale flag when setting thresholds while saving certain promotions
2346	Resolved a problem where deleting costs/adjustments used all CPU time and never completes

- 2355 Invoice import was not adding a record for an item if there were multiple order packages and the Order Code was not sent on the invoice. This has been corrected
- 2360 Changed Release Manager to print items in UPC order.
- 2363 Changed behavior in Unit Price Category Maintenance to start in Insert mode if there are no rows in the database.
- 2375 Resolved a problem with SIL Batch Export where the Units/Case and Quantity Prohibit were not being written to the exported batch
- 2378 Changed the SIL Batch export application to omit commas within the batch description so they do not create problems in a SIL parser
- 2380 Added the ability to export the Target Gross Margin % in SIL Batch Export
- 2384 In 4.3.3, a patch was provided to update the progress bar in Batch Manager when applying batches that updated per item. Due to the changes listed above for Staging and Releasing, the progress bar only appears when Releasing items using ActiveX. When using Fast PLU Batching (releasing 500 or more items) or Staging, animated icons replace the progress bar.
- 2387 Resolved a problem where duplicate adjustments were being added under certain conditions when processing SIL.
- 2389 Resolved a problem where certain fields were not being saved when adding a new adjustment
- 2392 Changed the wording of the save prompt when a grids width or column placement to: "...Do you want to save the changes to the settings?"
- 2394 Added the ability for a Vendor file from CIX in FX to be processed automatically. To do this, a batch file running dbconvrt and passing the filename should be created and executed using File Router to move and execute the batch file.
- 2396 Changed the logic regarding the processing of the Tare Code value when an item is received via SIL. If an item is not a weighed item and a Tare Code is set, the Tare Code is set to 0 – None
- 2401 Changed dbconvrt to follow the same logic as described above with the Tare Code
- 2404 Changed the handling of the tare weight and decimal quantity:
  - o If tare weight is set to 0, the weighed flag is not automatically set to N
  - o If decimal qty is changed to Y, then set the weighed flag = N and tare weight = 0
  - o If tare weight is changed to > 0, the set the weighed flag = Y and decimal qty = N
- 2406 Resolved a problem where certain fields were not being saved when adding a new order package.
- 2414 Resolved a problem where the File Synchronization application would give error when it encountered an item with the Dept. Override set to N.
- 2417 Changed the calculation of Gross Margin where a large GM% be capped at -100%.
- 2430 Changed handling logic of department itemizers when adding or changing items through SIL:
  - o If the item is being added or the department is being changed, or the Dept Override flag in the SIL file is N, department itemizers will be set to match the department table.
  - o If the item is being added or the department is being changed and the Dept Override flag in the SIL file is Y, the department flags from the department table will be applied and then overlay those in the SIL file.
  - o If the Dept Override is explicitly sent as a N, we will refresh the itemizers from the department table.
  - o If the Dept Override is explicitly sent as a Y, we will set the

- additional flags as sent in the SIL file.
- o If the Dept Override flag is omitted, we will accept any additional flags that are sent in the SIL file and the Dept Override will be set to Y on the item.

2432	Resolved a problem where multiple allowances would create duplicate allowance batch records.												
2449	Change the display of the Invoice Number on the FM so that only significant digits are displayed, shortening the value by eliminating leading zeros.												
2453	Changed the login process for FM Item Maintenance. Batch Apply Time is not prompted unless the user wishes the schedule the batch.												
2458	Resolved problems with printing Rascal labels. Certain fields displayed incorrect information.												
2461	Resolved a problem where the FM application would crash when attempting to print a Rascal label with the field "Today".												
2464	Changed FM Receiving application to allow the Supplier Category to be changed after adding a detail record to the invoice.												
2477	Resolved problems with SIL Batch Export where the Frequent Shopper fields were not being processed properly.												
2488	Resolved a problem where the Exclude Adjustments from GM set to Y was not properly Excluding Adjustments from GM and Profit calculations.												
2489	Removed the Adjustment Method Code from the drop-down display of the Adjustments (the description should be enough) and readjusted the field width on the screen.												
2492	Resolved a problem where cases were not reported properly on the Store Transfer Ticket report												
2495	Changed the way descriptions are handled when received in a SIL Change batch. A change record for the Short Description will not now change the Long Description.												
2496	Changed item maintenance so that Item Form and Item Grid share saved queries.												
2499	Department Receiving invoices are now extracted with Item Receiving invoices during the invoice extract process.												
2507	Resolved a problem where the Valuation Report was not working when the Inventory Method was Current.												
2515	Resolved a problem with the Release Manager Report where Release and Error counts were improperly reported.												
2519	Resolved a problem where SIL Batch Export would return an error if the batch description, after SBE – is pre-pended to the existing batch description, was longer than 50 characters.												
2529	Added logic in SIL processing to handle the Prohibit Qty Assume Qty Force Qty flags properly.												
2530	Added logic in SIL processing to handle the Vendor Cpn Flag Bonus Cpn Flag Store Cpn Flag flags properly.												
2532	Resolved a problem with SIL Batch Export where the Enforce Qty flag was not being exported when set to Inhibit. The logic is as follows:												
	<table border="1"> <thead> <tr> <th>Enforce Qty Value (RBO)</th> <th>SIL Field F85</th> <th>SIL Field F102</th> </tr> </thead> <tbody> <tr> <td>0 – None</td> <td>0</td> <td>0</td> </tr> <tr> <td>1 – Enforce</td> <td>1</td> <td>0</td> </tr> <tr> <td>2 – Inhibit</td> <td>0</td> <td>1</td> </tr> </tbody> </table>	Enforce Qty Value (RBO)	SIL Field F85	SIL Field F102	0 – None	0	0	1 – Enforce	1	0	2 – Inhibit	0	1
Enforce Qty Value (RBO)	SIL Field F85	SIL Field F102											
0 – None	0	0											
1 – Enforce	1	0											
2 – Inhibit	0	1											
2534	Resolved a problem where new order packages with no cost or adjustments are created when the Supplier ID, Case Pack Size or Order Code is changed. A new Order Package will still be created but the current cost/adjustments will be copied from the existing order package to the new one.												

- 2536 Resolved a problem where Cost Discounts were being exported in the SIL Batch Export application incorrectly. Cost Discounts are not now being exported.
- 2539 Resolved a problem where multiple costs for the same start date, one with a Cost Break of 0 and one with a Cost Break > 0, will both be processed.
- 2544 Resolved a problem where Stock Count Import – added as a patch to 4.3.3 – did not handle EAN-13 items correctly.
- 2545 Added an index for Item Group Code.
- 2546 Resolved a problem where errors were generated when saving an invoice.
- 2547 Resolved a problem where items on file on the POS but not in RBO were not being added to RBO when temporary maintenance was being used.
- 2548 Resolved a problem where items were not printing in Chronological Order when the global parameter is set.
- 2549 Resolved a problem where customers were being asked to choose Order Packages when multiples existed for a supplier though one of them was the Primary even though the global parameter Use Primary Order Package if Multiple Pkgs was set.
- 2559 Resolved a problem where the Price End Date was not populated with the batch end date when printing batches from batch manager.
- 2565 Resolved a problem in FM Receiving where an error was generated – Error determining inventory on hand time to update. Violation of Primary Key constraint PK\_DEPT\_TOTS cannot insert duplicate key in object dept\_totals
- 2584 Updated the cost display on the invoice to include a comma separating the 1000's.
- 2591 Changed logic in file sync to exclude leading and trailing spaces when comparing descriptions. This was returning problems when they really didn't exist
- 2592 Resolved problems where Item Maintenance returned occasional SQL errors when attempting to open SIL batches.
- 2608 Changed the logic with processing SIL so that costs sent without a cost date are added with the SIL processed date as the cost start date.
- 2609 Lined invoice numbers up more legibly on the Supplier Recap Report
- 2622 Resolved a problem in Back Office Tasks where the scrollbar was not displayed when more than 14 lines are displayed in a 800X600 resolution display.
- 2649 Made changes to the Stage process so that Order Package information will be applied properly when not in a 'winning' batch.
- 2662 Resolved a problem where typing a Primary or Alternate directory for RBO Backups did not save the changes.
- 2675 Resolved a formatting problem with Inventory Management reports.
- 2676 Resolved a problem where the GM% was formatted incorrectly in Store Transfer reports.
- 2682 Resolved a problem when credits/bottle deposits/return on debit were not being reflected using the /sub command on the FM's.
- 2686 Changed item maintenance so that when an item is added and fields are defaulted, like the TGM%, Pass-on % and Min. Auto. Price Change, from the Supplier record, the fields are not marked red, as if they were changed.
- 2691 Resolved a problem where temporarily changing a retail on an invoice to 0.00 also changed the cost for the item to 0.00
- 2692 Resolved a problem where, when you changed an adjustment with no end date, the end date was being set to the 'today' when it is released.
- 2697 Resolved a problem introduced with 4.3.3 MU13 where only one Receiving session at a time could be opened.
- 2698 Resolved a problem where items deleted from a suspended invoice continue to show up in the invoice.
- 2701 Resolved a problem where Review/Edit Batch was causing display problems in Grid

View

- 2708 Resolved a conflict between StoreLine and ISS45 versions where an Amount Off promotion is handled differently between the two releases. The second threshold must be 1 on ISS45 and 0 on StoreLine
- 2711 Resolved a problem where multiple reports on the same Back Office Task were displaying randomly during and edit of the BOT
- 2734 DBConvrt.exe was modified to follow the department override logic written for ScanMaster, checking the parameter to determine how the flags should be set.
- 2735 Added an Icon for a blank tool on the Batch Manager Toolbar. A report process was available in the screen, but no icon was associated with the button.
- 2738 Changed FM Flexible Data Collect so that the Inventory On-Hand is NOT updated when simply collecting the data. We have written new features to handle this more correctly.

## **Additional Considerations**

When an item's scale flag status changes within a reported period, the current status is used. Any movement stored for the item with the non-current status will not be reported. For example, if a 5-week movement report is printed and within that period, the scale flag is changed on an item from Y to N then back to Y. If the current record indicates that this is a Y, then any movement for the item while the status was N will not be reported. However, if the current flag is changed to N, then movement for the item while the status with N will be reported and the movement for the item while the status is Y will not be reported.

An error will display on an ISS45 V7 system and item maintenance will close if an item is attached to more than four promotions, whether they are in effect or not. Until this is resolved, items should be unlinked from expired promotions before linking to new promotions.

When an item is set for an amount off per item discount on V7, an Order/Level promotion is created. If multiple items are linked to this promotion, the customer will receive the discount for the items, but when movement and sales are pulled back to RBO, the discount amount for the entire promotion is applied to the last item scanned. This is true whether the promotion is linked within the ISS45 promotion screens or from within RBO.

Since FM Flexible Data Collect is a data collection program only, there is no facility for checking the validity of the data provided. If the data fails to import into Inventory Management, the only indication that something is wrong will be missing data and information in the logs.

When typing a pathname in FM Flexible Data Collect for output file, the path separator must be the DOS "\", not the division "/" symbol.

### ***ScanMaster Considerations***

The Adjective Code table is defined and maintained on the ScanMaster server. While RBO may set an item to use an Adjective Code, when the movement is pulled, the Regular Sales value is calculated against the unit price of the item. Thus, if an item has an Adjective Code as below, the item will show a “loss”:

Level	Price at level
1	1/1.00
2	6/1.75
3	12/3.25
4	24/4.75

If a cashier rings up a single item, the price is \$1.00. If they ring up 24 items, the price is \$4.75, however since RBO does not maintain the Adjective Code table, the price will show a “loss” of \$19.25. The actual movement and sales will be correct, but the calculated Ad/Loss value will be wrong.

The ScanMaster feature to provide Like Item pricing is not supported in RBO. Instead, we have implemented a general Item Group Code Pricing feature (see [What's New in 4.04.00](#) above for a description).

**© StoreNext Retail Technologies LLC 2005**

StoreNext Retail Technologies LLC endeavors to ensure that the information in this document is correct and fairly stated but does not accept liability for any error or omission.

The development of StoreNext products and services is continuous and published information may not be up to date. It is important to check the current position with StoreNext. This document is not part of a contract or license save insofar as may be expressly agreed.

---

**StoreNext Retail Technologies LLC  
6100 Tennyson Parkway, Suite 130  
Plano, Texas 75024**

**P/N 89000206  
PIN 45001/072**