

A vertical column of five squares in varying shades of blue, from dark to light, used as a decorative element for the title.

*Retalix BackOffice*  
*Release Notes*  
*Version 4.5.3*

## RBO Release Notes

| <b>Date of Issue</b> | <b>Product Identification Number</b> | <b>Part Number</b> | <b>Brief Description</b> |
|----------------------|--------------------------------------|--------------------|--------------------------|
| May 2003             | 45001/072                            | 89000135           | Initial Release – 4.2    |
| November 2004        | 45201/072                            | NPN                | 4.3 Release              |
| March 2005           | 45201/072                            | 89000206           | 4.4 Release              |
| July 2005            | 45201/072                            | 89000357           | 4.5 Release              |
| January 2006         | 45201/072                            | 89000360           | 4.5.1 Release            |
| April 2006           | 45201/072                            | 89000363           | 4.5.2 Release            |
| January 2007         | 45201/072                            | 89000366           | 4.5.3 Release            |

**© Copyright StoreNext Retail Technologies LLC 1995-2007  
All rights reserved**

This publication is protected by federal copyright law. No part of this publication may be reproduced or transmitted into any human or computer language in any form or by any means, stored in a retrieval system, transmitted, redistributed, translated or disclosed to third parties, or de-compiled in any way including, but not limited to, photocopy, photograph, electronic, mechanical, magnetic or manual without the express written permission of StoreNext Retail Technologies LLC or its licensors, if any. All copies, so authorized, shall contain a full copy of this copyright notice.

StoreNext Retail Technologies LLC endeavors to ensure that the information in this document is correct and fairly stated but does not accept liability for any error or omission. StoreNext Retail Technologies LLC makes no representation or warranties with respect to the contents hereof, and specifically disclaims any implied warranties of merchantability or fitness for a particular purpose or non-infringement. No commitments by StoreNext or its suppliers are made from this documentation which is provided for information only.

Development of StoreNext products and documentation is continuous: StoreNext Retail Technologies LLC reserves the right to revise this publication and to make changes from time to time in the contents hereof or in the products herein described or discussed without notice and without any obligation of StoreNext Retail Technologies LLC to notify any person or organization of such revision or changes. Information published in this document will likely become obsolete over time and it is recommended that users regularly check for updates and newer versions.

StoreNext Retail Technologies LLC has prepared this manual for use by users, authorized third parties and personnel of StoreNext Retail Technologies LLC as a guide to the proper installation, operation, customization and/or maintenance of StoreNext Retail Technologies LLC equipment and software. The drawings and specifications contained herein are the property of StoreNext Retail Technologies LLC and/or its licensors.

Third-party products, services, or company names referenced in this document may be trademarked or copyrighted by their respective owners, and are for identification purposes only.

Copyrights, trademarks and license agreements shall be governed and construed in accordance with the laws of the State of Texas and the Federal Arbitration Act, and shall benefit Retailix, its successors, and assigns.

Address comments and corrections to:

**StoreNext Retail Technologies LLC**  
Software Program Director  
6100 Tennyson Parkway  
Suite 130  
Plano, Texas 75024

## Table of Contents

|  |    |
|--|----|
| Retailx BackOffice Release Notes.....                      | 4  |
| General.....   | 4  |
| Installing RBO with SQL Server Express .....               | 5  |
| Determining when SQL Server Express can be used .....      | 5  |
| SQL Server Express 2005 Installation recommendations ..... | 5  |
| Installing RBO for ISS45.....                              | 6  |
| Version 8.....   | 6  |
| Version 7.....   | 6  |
| Installing RBO for ScanMaster.....                         | 7  |
| Installing RBO for NCR ACS-IR.....                         | 8  |
| NCR ACS-IR Installed on a Windows 2003 Server.....         | 9  |
| Updating RBO .....   | 10 |
| What's New in 4.05.03 .....                                | 11 |
| General Import Utility.....                                | 11 |
| Synchronize POS Vendor Cost fields.....                    | 14 |
| Host Tab.....  | 15 |
| Labels Tab.....  | 15 |
| Stylus Dataset for ScanMaster.....                         | 16 |
| POS Release Compatibility.....                             | 17 |
| Database changes.....                                      | 18 |
| Added Procedures.....                                      | 18 |
| Changed Tables.....  | 18 |
| Resolved Issues.....                                       | 21 |
| Open Issues .....  | 23 |
| ScanMaster Open Issues .....                               | 24 |
| ACS-IR Open Issues.....                                    | 24 |
| ACS-IR Apply Process.....                                  | 25 |

## Retalix BackOffice Release Notes

**Release:** 4.05.03

**Date:** January 2007

**Goal of Release:** General Release

**O/S Support:** Windows 2000  
Windows 2003 Server  
Windows XP Professional

**DB Support:** SQL Server 2000 Standard Edition Service Pack 3  
SQL Server Express

| POS Type                  | ISS45 V7                                | ISS45 V8                                | ScanMaster   | ACS-IR              |
|---------------------------|---|---|--|---------------------|
| <b>Releases Supported</b> | 7.7, 7.8, 7.0.8,<br>7.0.9, 7.1.0, 7.1.1 | 8.4.6, 8.0.6,<br>8.0.8, 8.1.0,<br>8.1.1 | 1.2, 1.3, 1.4,<br>2.0, 2.1.0,<br>2.1.2, 2.2.0,<br>2.3.0, 2.4.0 | 6.01.02,<br>6.01.03 |

### Installation/Update information

#### General

Internet Explorer 5.5 must be installed prior to installing RBO. The installation is found on the RBO Installation CD in the \Other\Microsoft\Internet Explorer 5.5 folder.

If the computer on which RBO Server is installed is not physically connected to a network, RBO services will not start and RBO will not run. Be sure the RBO computer is connected to a network, even if only to a hub with no other active systems.

The RBO default user name is **Admin**. You should add additional users through security maintenance. See the RBO Users Guide for instructions.

SQL Server Service Pack 3 is included on the Retalix BackOffice Installation CD in the \Other\Microsoft\SQL Server 2000 SP3a folder.

A Stylus Patch has been included on the RBO installation CD. Execute the install.bat file in the \Stylus\\_Apply\_this\_patch\_after\_setup\_ folder to apply the patch.

Users are not automatically granted Read/Write/Execute permissions to shares in Windows Server 2003. When installing Stylus and sharing the Insignia folder as per the installation instructions, you must modify the share permissions to allow users and administrators Read/Write/Execute permissions.

To accommodate the additional disk space that movement history will require, it is recommended that RBO be installed on 10gb or greater partition.

For best performance, 512mb or greater memory is recommended on the RBO Server.

## ***Installing RBO with SQL Server Express***

RBO 4.5.2 may be installed with SQL Server Express as the database server for **V7**, **ScanMaster** and **NCR ACS-IR** installations. SQL Server Express 2005 is a royalty-free version of the SQL Server 2005 database server and is available from the Microsoft web site. SQL Server Express must be installed prior to installing RBO.

### **Determining when SQL Server Express can be used**

SQL Server Express is not always the best option as a database for use with RBO. The following are pre-requisites and guidelines for determining when SQL Server Express is appropriate.

#### **Pre-Requisites**

- SQL Server Express may only be used in a non-ISS45 V8 environment.
- SQL Server Express requires .NET Framework 2.0, which must be installed separate from and prior to installing SQL Server Express
- SQL Server Express requires Microsoft Internet Explorer 6.0 and greater.

#### **Guidelines**

Refer to the document “Getting Started Guide” for the preferred installation to use with RBO.

### **SQL Server Express 2005 Installation recommendations**

Please refer to the installation instructions for SQL Server Express from Microsoft for pre-requisites and installation procedures.

## ***Installing RBO for ISS45***

### **Version 8**

- RBO Server must be installed on MFS1.
- The ISS45/StoreLine parameter “Update All Mix and Match Groups When One PLU Changed” must be set to **No**. If this parameter is set to **Yes**, the “Send PLU File to POS” will return errors before it is completed, will take many hours to complete and when the build completes, RBO and the POS will be out of sync.
- The following parameters must be set in ISS45:
  - General System Parameters
    - Store>Front Office>PLU and Batch>Batch Options
      - Use Fast PLU Batch Execution = **Yes**
    - Store>Front Office>PLU Options>Validation
      - Force short and long description to match = **No**
    - Store>POST>Monetary>Frequent Shopper>Frequent Shopper Mode
      - Frequent shopper type
        - **Enhanced frequent shopper (type2)**
    - Store>Front Office>System>Object Security
      - Enable PLU Object Security In System = **No**

#### ***Reboot the system after making this last change***

- The PLU Maintenance and PLU Batch features from the PLU Management menu in ISS45 Office are removed from the menu system. This is done to prevent data entry outside of RBO and keep the files synchronized.
- ISS45 Office Client must be installed where a RBO client is installed.
- To accommodate existing servers that have a computer name that begins with a number, the host file must be updated to include an entry for MFS1 that corresponds to the server’s IP address. The entry should resemble: 192.1.1.10 MFS1
- SQL Server 2000 must be installed according to ISS45/StoreLine Office Installation instructions. Specifically, the Collation Settings must be set for **Binary order for use with the 850 (Multilingual) Character Set**. Failure to install SQL Server correctly will render the Fast PLU Release feature in RBO incompatible with ISS45/StoreLine

### **Version 7**

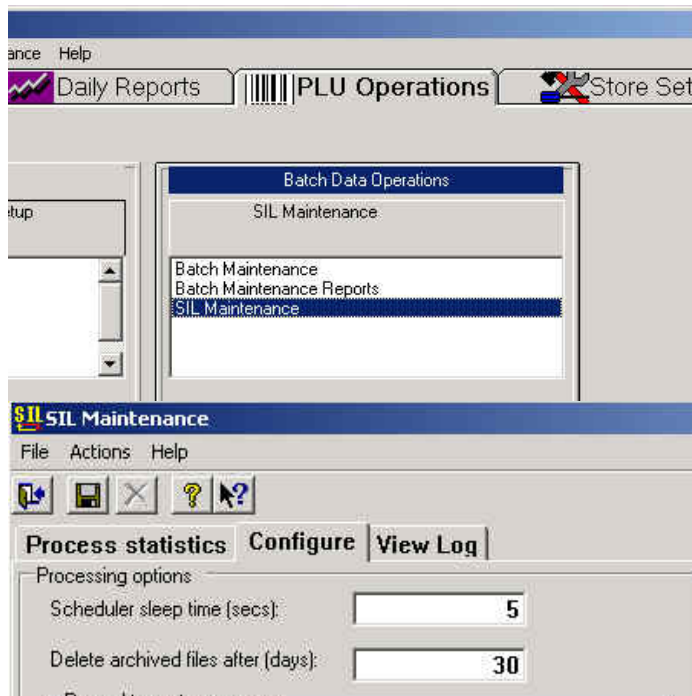
- RBO Server may be installed on MFS1, MFS2 or any stand-alone Windows Server or Workstation (if using SQL Server Express). The Retailix StoreLine Communications Repository must be installed on MFS1. Refer to the [Getting Started Guide](#) for installation instructions.
- ISS45 Office Client must be installed on any RBO system where item maintenance will be performed.

## ***Installing RBO for ScanMaster***

- Installation instructions for ScanMaster 1.X are provided in the \Other folder on the RBO installation CD. Please refer to the folder entitled “Pervasive for ScanMaster 1.2” for instructions.
- Installation instructions for ScanMaster 2.0 are provided in the \Other folder on the RBO installation CD. Please refer to the folder entitled “Pervasive for ScanMaster 2.0” for instructions.
- Installation instructions for ScanMaster 2.1 and greater are provided in the \Other\ folder on the RBO installation CD. Please refer to the folder entitled “Pervasive for ScanMaster 2.1” for instructions.
- RBO replaces the functionality of Enhanced Pricing in ScanMaster 2.1. You must disable Enhanced Pricing in ScanMaster when installing RBO.
- The default release number for ScanMaster 2.1.X support in RBO is 2.1.2. This is the first StoreNext release of ScanMaster. If you are installing RBO on an NCR ScanMaster 2.1.0 system, you must change the POS release number in Parameters to ScanMaster 2.1.0. Failure to do so will result in an error when pulling the departments from the POS and when adding a new item.
- ScanMaster Client must be installed on the RBO Server/Workstation to access electronic promotions on ScanMaster 2.1.X and greater. RBO uses the ScanMaster client software for this feature.
- RBO may now be installed on the ScanMaster Server when installing for ScanMaster 1.3 or greater and 2.1.2 or greater. This eliminates the previous requirement of separate ScanMaster and RBO server systems. **\*\*THIS IS ONLY FOR SCANMASTER RELEASES THAT ARE DISTRIBUTED BY STORENEXT. – NCR DISTRIBUTED SYSTEMS REQUIRE SEPARATE SERVERS\*\***
- A separate installation for ScanMaster movement has to be done on the ScanMaster server. Please run Setup from the Retailix ScanMaster Movement folder under the \Other folder on the RBO installation CD.

## Installing RBO for NCR ACS-IR

- This release of RBO is the first to support ACS-IR (for independent retailers).
- RBO must be installed on a system other than the ACS Primary or Secondary.
  - ◆ ACS runs with MSDE and MSDE cannot be installed or running on a system with either SQL Server 2000 or SQL Server 2005, which includes SQL Server Express
- Following the RBO Installation, installation of the Retailix ACS Repository must be performed on the ACS Primary and Secondary (if one exists) servers.
  - ◆ The ACS Repository Service installs files necessary for communication with the ACS database and for pulling movement.
  - ◆ Included with the ACS Repository Service installation is an installation of the Retailix ACS Datapump service (formally provided by TCI). The Datapump provides necessary support for transferring SIL files, executing batches and message logging on the ACS server.
- To install the Retailix ACS Repository, follow instruction from the RBO installation CD in the [\Other\RBO\\_ACS Communications\ACS Communications Getting Started Guide.pdf](#)
- To reduce the default wait time for maintenance to apply to the ACS-IR system, the following timer changes are recommended:
  - ◆ ACS-IR SIL Configuration
    - If POS performance is negatively affected by this change, increase by 1 second. This determines how frequently the SIL processor checks for new SIL files.



### **NCR ACS-IR Installed on a Windows 2003 Server**

There have been issues identified when installing ACS-IR on a Windows 2003 server and modifying the configuration as described above. The primary issue is one where applying maintenance never completes until the Datapump issues a timeout. If this problem is encountered, contact StoreNext support for assistance.

## Updating RBO

- Please ensure that a back up of the databases has been performed prior to executing an update.
- Stylus has been upgraded to version 2.7. Please update existing versions from the \Stylus folder on the RBO installation CD.
- When updating RBO for ISS45, the RBO StoreLine Communications must be updated. When RBO Server is installed on MFS1, the installation will automatically install or update the RBO StoreLine Communications application. If RBO Server is not installed on MFS1 (V7 only), you must install the StoreLine Communications application separately on MFS1. The setup is found on the CD under Other, RBO StoreLine Communications. Initiate the update by launching Setup.exe on the CD from the ISS45 POS Server.
- When updating RBO, if any FM Parameters include the field 72. pkg size, the parameter must be edited before using. Field 72 has been renamed pkg count and will cause the FM application to crash, requiring a restart of the FM service.
- Reports changed significantly after RBO 4.2.1 and existing queries may not be updated. Please review the available reports and report queries. Rebuild new queries as required.

Beginning with RBO 4.3.3, the parameter “First Day of Movement Week” has been changed. Two parameters - “Ad Week Start Day” and “Business Week Start Day” – replace the old parameter. The default value for these parameters is Sunday. The “Business Week Start Day” is not editable but will match the day of the week the “First Quarter Starts On” parameter is set for.

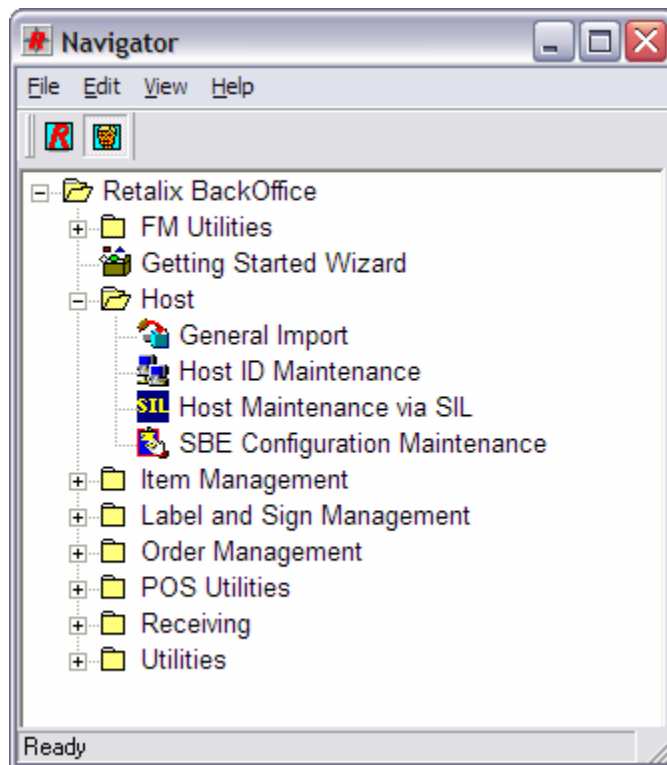
- If updating from prior to RBO 4.5.0, the **Movement Extract For Host** Back Office Task will need to be recreated.
- When updating RBO on a ScanMaster system upgraded from prior to 2.1.2 to a release equal to or later than 2.1.2, the existing Data Source for NCR ScanMaster on the RBO Server and RBO Clients must be renamed to **ScanMaster** to refer to the ScanMaster Data Source on the ScanMaster server. Additionally, a ScanMaster Data Source is required on both the RBO Server and Client. Instructions are provided in the \Other folder on the RBO Installation CD. Please refer to the folder entitled “Pervasive for ScanMaster 2.1” for instructions. This is required for the RBO Server and each RBO Client that will do Item Maintenance.
- There is a new Navigator option in this release. To initialize Navigator to recognize this new menu option, choose Reset User View from the View menu for each unique user who needs access. This will reset any modified user views to match the default view.
- There are several pre-defined FM Flexible Data Collect Parameters written to the system. These parameters will overwrite any existing FDC parameters with the same numbers. You will need to recreate any FM Flexible Data Collect Parameters numbered 89 – 95.
- **When updating RBO for ScanMaster, you will need to install the Retailix ScanMaster Movement application on the ScanMaster server. Please run Setup from the \Other\Retalix ScanMaster Movement folder on the RBO Installation CD.**

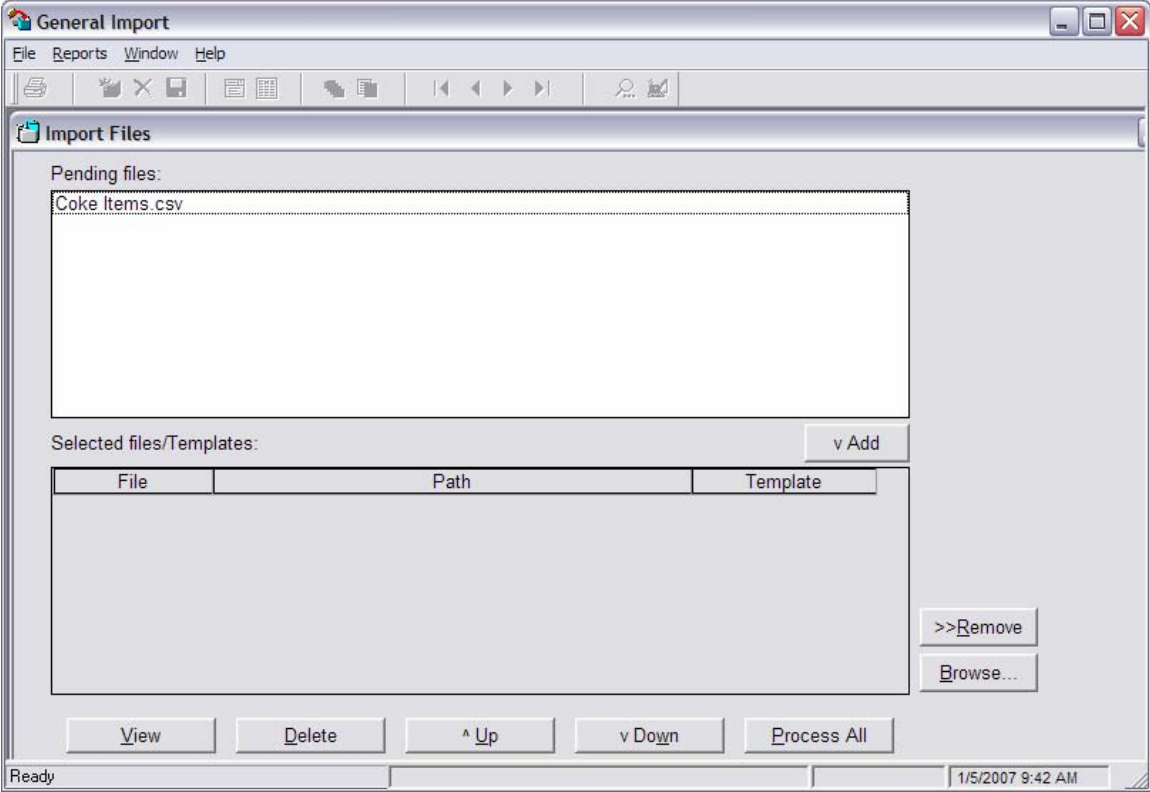
## **What's New in 4.05.03**

### Host Features

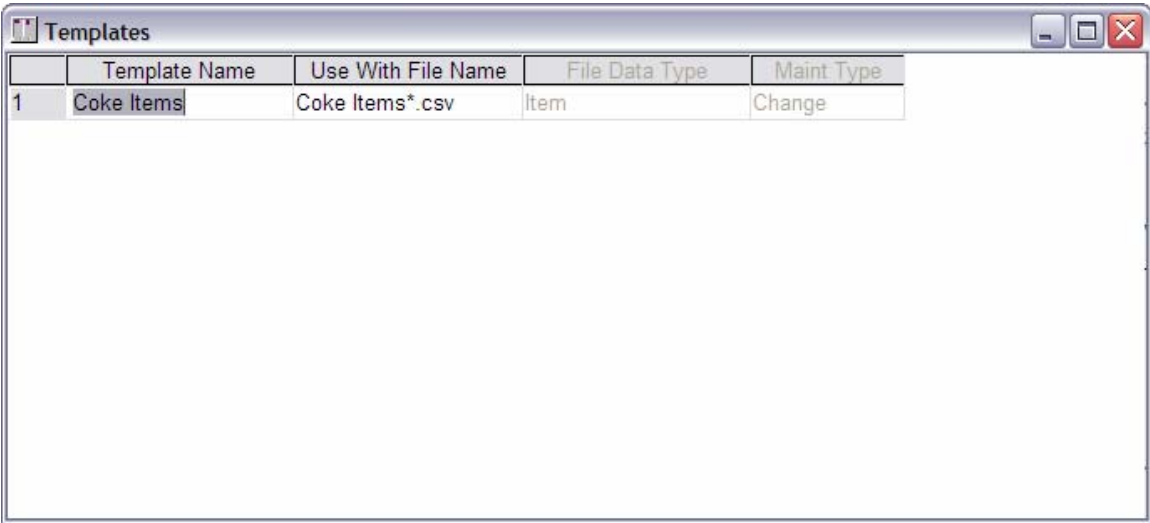
#### **General Import Utility**

- A new feature to allow hosts that do not support SIL to send maintenance or file loads to RBO with delimited or fixed length files
- This feature allows users to map incoming fields to RBO database fields, establish default values for fields with no data and apply formulas to data, including mapping incoming data to valid RBO data
- RBO batches may be created or a full file load may be performed
- The GIU will allow full support of RBO adjustments, which is an enhancement over SIL which only supports Allowances and Discounts

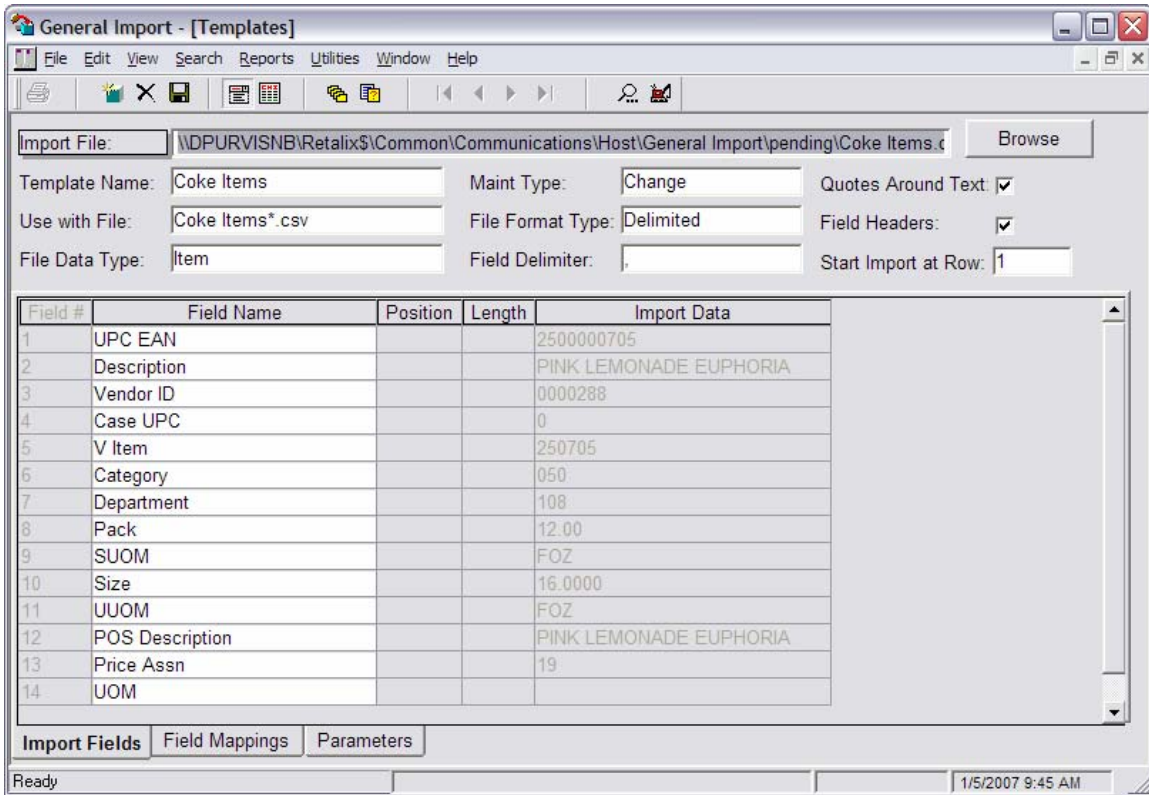




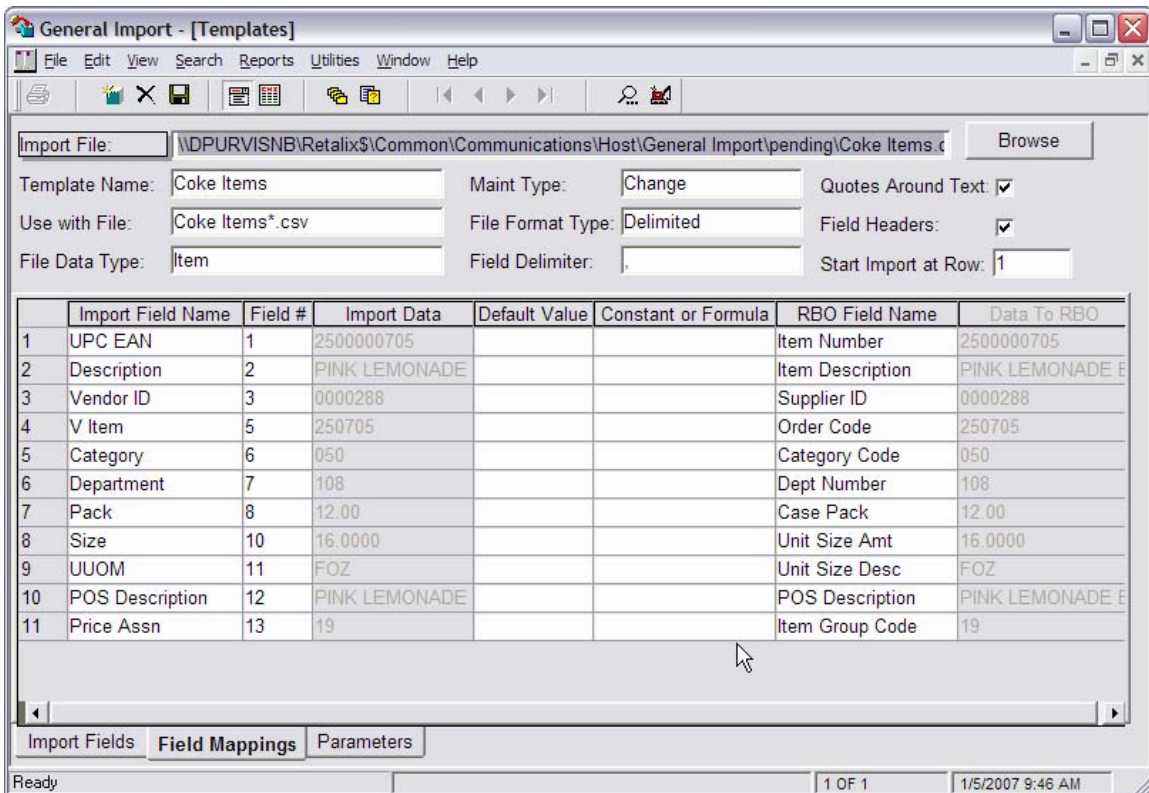
**Import Screen**



**Templates List Screen**



Template: Import Fields



Template: Map Fields

- Review the User's Guide for instructions on usage

## Item Utilities

### Synchronize POS Vendor Cost fields

- This feature takes the effective cost, primary vendor and case size for the current date and copies them into the Vendor Number, Vendor Item Number, Units Per Case and Case Cost for the POS in a batch.
- This is to address the discrepancy between DSD receiving cost and the POS cost without requiring additional maintenance
- This may be executed manually from the Item Utilities> Item menu
- This should be scheduled as a task to run prior to a Full Stage to make sure the batch is staged for release
- A new Parameter – POS Cost Sync Cut-Off Time – sets a time after which the cost copied is the next day's cost.

The screenshot shows a window titled "Parameter Maintenance - [Maintain Parameter Settings]". The window has a menu bar with "File", "Edit", "Reports", "Window", and "Help". Below the menu bar is a toolbar with icons for Save, Print, and Refresh. The main area contains a list of parameters with checkboxes and dropdown menus. The parameters are:

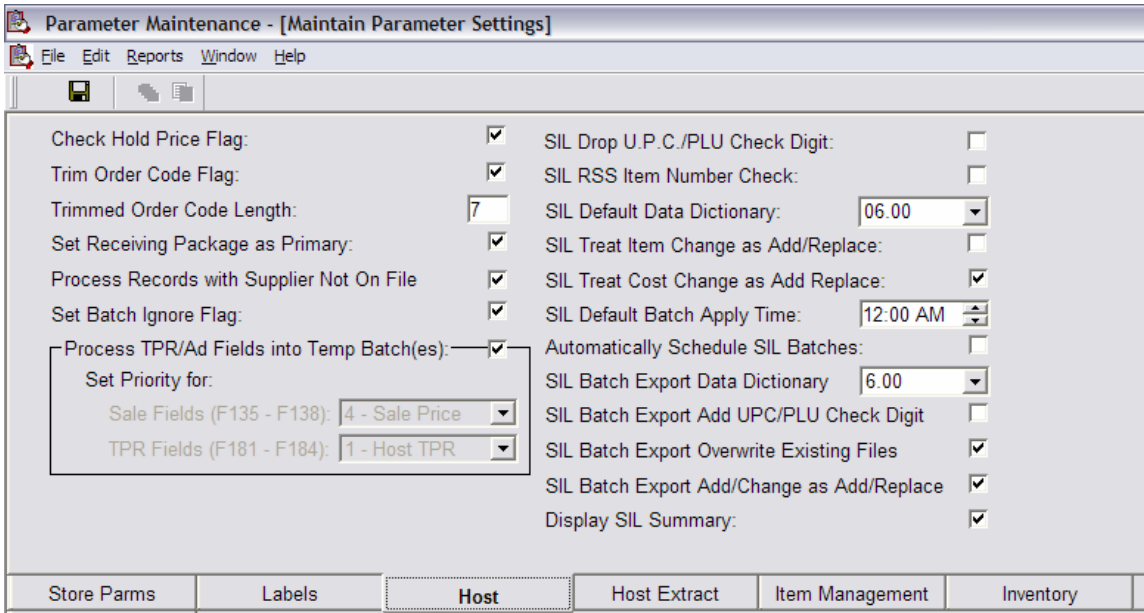
|   |                                     |  |                                     |
|---|-------------------------------------|--|-------------------------------------|
| Force POS Description to Upper Case:            | <input checked="" type="checkbox"/> | Auto Release:                          | <input type="checkbox"/>            |
| NSC2 Lookup Format:                             | 5 Digit Lookup                      | Enable Temp Batches:                   | <input checked="" type="checkbox"/> |
| Set Receivable Flag for New Receiving Packages: | <input checked="" type="checkbox"/> | Lowest Price Wins:                     | <input checked="" type="checkbox"/> |
| Set Orderable Flag for New Receiving Packages:  | <input checked="" type="checkbox"/> | Advertised Items Take Priority:        | <input checked="" type="checkbox"/> |
| Default Supplier:                               | UNIFIED WESTERN C                   | Show Deleted Batches in Batch Mngr:    | <input type="checkbox"/>            |
| Item Description to Use on Reports:             | Item Description                    | Display POS Movement:                  | <input checked="" type="checkbox"/> |
| Apply Reward to Lowest Value:                   | <input checked="" type="checkbox"/> | Open Batches in Query Mode:            | <input checked="" type="checkbox"/> |
| Enable You Saved Maintenance:                   | <input checked="" type="checkbox"/> | Full Stage Cut-Off Time:               | 05:00 PM                            |
| You Saved Bonus Buy Type:                       | Bonus Buy Savings                   | Auto Calculate Price Using Target GM%: | <input checked="" type="checkbox"/> |
|   |                                     | Default to Immediate Batch Apply Mode: | <input type="checkbox"/>            |
|   |                                     | POS Cost Sync Cut-Off Time:            | 05:00 PM                            |

At the bottom of the window is a tabbed interface with the following tabs: Store Parms, Labels, Host, Host Extract, Item Management (selected), and Inventory.

**Parameter Changes**

**Host Tab**

- The Host Tab in Parameter Maintenance has been modified slightly to accommodate the changes for the General Import utility. The screen specifically indicates which parameter relate to SIL – all on the right side of the screen – and which apply to all incoming host files (see below)



**Labels Tab**

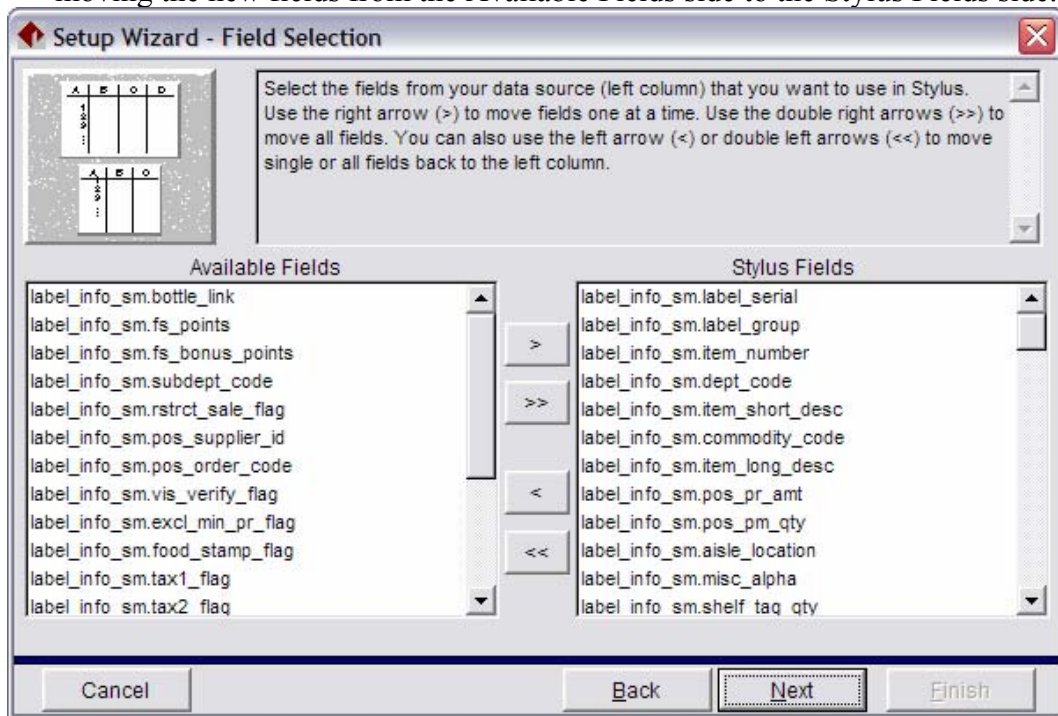
- The Labels Tab in Parameter Maintenance has a new parameter – Text File Format – allows users to change from the current Fixed Length file to a comma or tab separated file when exporting label data (not valid for UWG-ULINK exports).



Label Printing

### Stylus Dataset for ScanMaster

- The following fields were added to the label\_info\_scanmaster table:
  - Bottle\_link
  - Fs\_points
  - Fs\_bonus\_points
  - Excl\_min\_pr\_flag
  - Food\_stamp\_flag
  - Tax\_flags (1-3)
  - Wic\_flag
  - Sub\_dept\_code
  - Restrict\_sale\_flag
  - Pos\_supplier\_id
  - Pos\_order\_code
  - Vis\_verify\_flag
  - Reg\_item\_type\_code
  - Reg\_pos\_split\_pr\_amt
  - Reg\_pos\_split\_pm\_qty
  - Reg\_weight
- To enable these fields within Stylus, open Stylus and modify the dataset – moving the new fields from the Available Fields side to the Stylus Fields side.



## ***POS Release Compatibility***

As RBO is enhanced, certain features require enhancements to the POS before they will work properly. The link below opens an Excel Spreadsheet that describes those features that require specific POS releases. The releases given indicate the minimum version of software to use the new feature.

[RBO Compatibility.xls](#)

---

## **Database changes**

The following changes have been made to the database between 4.5.2 and 4.5.3.

### **Added Procedures**

The following stored procedures were added in this release of RBO.

### **Changed Tables**

The following existing tables have added fields

**Table Name:** import\_field

**Purpose:** Defines an import field

| Column Name         | Data Type | Allow Nulls | Foreign Key | Description                  |
|---------------------|-----------|-------------|-------------|------------------------------|
| template_serial     | int       | No          | No          | key serial                   |
| field_num           | int       | No          | No          | Field Number                 |
| field_name          | varchar   | No          | No          | Field Name                   |
| fixed_fmt_start_pos | int       | Yes         | No          | Start Position of Field      |
| fixed_fmt_length    | int       | Yes         | No          | Length of fixed length field |

**Table Name:** import\_mapping\_table

**Purpose:** Defines a mapping table for import

| Column Name    | Data Type | Allow Nulls | Foreign Key | Description                  |
|----------------|-----------|-------------|-------------|------------------------------|
| table_serial   | int       | No          | No          | key serial                   |
| table_name     | varchar   | No          | No          | Mapping Table Name           |
| file_data_type | varchar   | No          | No          | Data Type for incoming field |
| rbo_field_name | varchar   | No          | No          | RBO Field to map to          |

**Table Name:** import\_mapping\_value

**Purpose:** Details for fields in mapping table

| Column Name  | Data Type | Allow Nulls | Foreign Key | Description           |
|--------------|-----------|-------------|-------------|-----------------------|
| table_serial | int       | No          | No          | key serial            |
| import_value | varchar   | No          | No          | Data from import file |
| rbo_value    | varchar   | No          | No          | Data from RBO         |

**Table Name:** import\_params

**Purpose:** Parameters available for import templates

| Column Name       | Data Type | Allow Nulls | Foreign Key | Description                         |
|-------------------|-----------|-------------|-------------|-------------------------------------|
| file_data_type    | varchar   | No          | No          | Parameter applies to files of type: |
| value_name        | varchar   | No          | No          | Parameter internal name             |
| value_description | varchar   | No          | No          | Parameter Description               |

**Table Name:** import\_template

**Purpose:** Defines template header information

| Column Name        | Data Type | Allow Nulls | Foreign Key | Description   |
|--------------------|-----------|-------------|-------------|---|
| template_serial    | int       | No          | No          | key serial  |
| template_name      | varchar   | No          | No          | Name of template  |
| import_file_name   | varchar   | No          | No          | Name of import file   |
| use_with_file_name | varchar   | No          | No          | Defines a type of file that applies to this template            |
| file_format_type   | smallint  | No          | No          | Fixed or delimited  |
| file_data_type     | varchar   | No          | No          | What File Type (Item/Cost/Vendor) does this template apply to?  |
| field_delimiter    | int       | No          | No          | ASCII value of delimiter  |
| quotes_around_text | char      | No          | No          | Defines whether quotes are around text fields                   |
| import_start_row   | int       | No          | No          | Defines the first row of data                                   |
| has_field_headers  | char      | No          | No          | Defines whether the file includes field headers – for reference |
| maint_type         | char      | No          | No          | Defines whether this is an ADD, Change, Add/replace etc.        |

**Table Name:** import\_template\_mapping

**Purpose:** Defines the detail for the mapped template

| Column Name          | Data Type | Allow Nulls | Foreign Key | Description                              |
|----------------------|-----------|-------------|-------------|--|
| template_serial      | int       | No          | No          | key serial                               |
| mapping_serial       | int       | No          | No          | key serial                               |
| import_field_num     | int       | No          | No          | The field number for the incoming field  |
| import_default_value | varchar   | No          | No          | A default value for fields with no value |
| import_function      | varchar   | No          | No          | Formula applied to incoming data         |
| rbo_field_name       | varchar   | No          | No          | Field to which the data goes             |

**Table Name:** import\_template\_params

**Purpose:** Parameter settings for the specific template

| Column Name     | Data Type | Allow Nulls | Foreign Key | Description   |
|-----------------|-----------|-------------|-------------|---|
| template_serial | int       | No          | No          | key serial  |
| file_data_type  | varchar   | No          | No          | RBO File (Item/Cost/Vendor etc.) to which the parameter applies |
| value_name      | varchar   | No          | No          | Name of parameter   |
| value_setting   | char      | No          | No          | Value of parameter  |

## **Resolved Issues**

| <b>Defect #</b> | <b>Defect Description</b>   |
|-----------------|---|
| 3227,3344       | Label Info table for ScanMaster missing several fields  |
| 3275            | Space for showing totals increased  |
| 3288            | New Extended (hidden) parameter controls where the file will be saved – usually on the RBO server   |
| 3292            | ScanMaster 1.X and 2.0 systems were storing the Unit Size field incorrectly on the ScanMaster system  |
| 3295            | Icon and terminology for printing a tag changed to match that in Batch Manager and Release Manager. Icon looks like a money tag, and the terminology is ‘Export Tags’ |
| 3343            | AP Export by date was including Suspended invoices  |
| 3365            | Labels not exported when selecting by Aisle Location  |
| 3373            | Stock Count Valuation report doubled item counts for items with multiple packages   |
| 3375            | Advanced queries on department and supplier sometimes gave SQL errors   |
| 3402            | After 32768 batches have been created, an error ‘Stage Failed, Error converting datatype int to smallint’ occurred.   |
| 3409            | Column protection affected when Excl Min Purch included in grid profile   |
| 3410            | Department Receiving should allow Invoice Adjustments   |
| 3411            | Receiving Recap Report not showing correct values for Department Invoices   |
| 3412            | Receiving Recap Report should not include Department Transfers  |
| 3415            | Receiving analysis report shows 0 for count and total on Department Invoices  |
| 3419            | An error ‘Adjustment Failed’ occurred when adding an invoice adjustment with the FM   |
| 3420            | Exporting a Receiving Recap Report could have a divide by zero error or incorrect GM%   |
| 3421            | The retail on the Receiving Recap Report was incorrect when item received by lbs with a case pack > 1   |
| 3423            | Invoices were sometimes not saved correctly when using auto-fill  |
| 3428            | Negative movement was not being displayed for ScanMaster  |
| 3450            | DSD Inventory buckets were not getting the correct adjusted cost for movement history reports   |
| 3451            | RPO Batch description contained an incorrect date   |
| 3452            | DBConvert for ScanMaster was not converting Family Code 1 correctly   |
| 3453            | Update Stylus dataset allows printing a ‘You Saved’ expression  |
| 3455            | Stage failed error occurred when using constants on POS Description, Item Description and Department  |
| 3468            | Invoice Manager now uses the system’s default printer. This corrects a problem with printing invoices when on a client  |
| 3474            | Item Temporary Allowances are not going away after adding and removing them from an item on an invoice  |
| 3475            | Inconsistency in signage between the invoice export and the screen  |
| 3476            | Error occurred in screen receiving when the bottom line is left blank   |
| 3480            | Unable to edit column settings when viewing batches in read-only mode   |
| 3483            | Full Stage took a long time   |
| 3487            | Shrink by Supplier report not always getting generated  |

| <b>Defect #</b> | <b>Defect Description</b>  |
|-----------------|--|
| 3489            | Database Rollback errors occurring during receiving  |
| 3490            | Total before net terms was getting set to 0 when invoice was suspended in screen receiving |

## **Open Issues**

When an item's scale flag status changes within a reported period, the current status is used. Any movement stored for the item with the non-current status will not be reported. For example, if a 5-week movement report is printed and within that period, the scale flag is changed on an item from Y to N then back to Y. If the current record indicates that this is a Y, then any movement for the item while the status was N will not be reported. However, if the current flag is changed to N, then movement for the item while the status with N will be reported and the movement for the item while the status is Y will not be reported.

An error will display on an ISS45 V7 system and item maintenance will close if an item is attached to more than four promotions. Until this is resolved, items should be unlinked from expired promotions before linking to new promotions.

When an item is set for an amount off per item discount on V7, an Order/Level promotion is created. If multiple items are linked to this promotion, the customer will receive the discount for the items, but when movement and sales are pulled back to RBO, the discount amount for the entire promotion is applied to the last item scanned. This is true whether the promotion is linked within the ISS45 promotion screens or from within RBO.

Since FM Flexible Data Collect is a data collection program only, there is no facility for checking the validity of the data provided. If the data fails to import into Inventory Management, the only indication that something is wrong will be missing data and information in the logs.

### **ScanMaster Open Issues**

The Adjective Code table is defined and maintained on the ScanMaster server. While RBO may set an item to use an Adjective Code, the Regular Sales value is calculated against the unit price of the item when the movement is pulled. The item will show a “loss” if an item has an Adjective Code as below:

| Level | Price at level |
|-------|----------------|
| 1     | 1/1.00         |
| 2     | 6/1.75         |
| 3     | 12/3.25        |
| 4     | 24/4.75        |

If a cashier rings up a single item, the price is \$1.00. If they ring up 24 items, the price is \$4.75, however since RBO does not maintain the Adjective Code table, the price will show a “loss” of \$19.25. The actual movement and sales will be correct, but the calculated Ad/Loss value will be wrong.

The ScanMaster feature to provide Like Item pricing is not supported in RBO. RBO implements this functionality using a general Item Group Code pricing feature.

### **ACS-IR Open Issues**

RBO is expected to replace performing maintenance in the ACS-IR PLU Maintenance screens. When maintenance is transferred to ACS-IR from RBO, all supported fields are sent to keep them in sync. The Sale Start/End dates are supported and therefore sent, even if they have not been populated in RBO. The date sent for both fields is 1-1-1900. This does not present a problem ringing the items up at the register but if a user launches PLU Maintenance on the ACS-IR system and attempts to save a record that has been updated by RBO, they will receive a warning that the Sale Start/End dates are prior to the current date.

The possibility exists that some 10-digit UPC numbers with two leading zeros may not be maintainable through RBO to ACS at this time. Until this issue is resolved, when these items are discovered, you will need to create lookup numbers for these items to maintain them through RBO. In a 40000 - 60000 item file, this may affect about 3 items. Specifically, some Guiltless Gourmet items seem to be the most likely to have problems.

The following fields back office fields are **NOT** supported through the RBO to ACS-IR interface, though most of the fields do exist in RBO:

Form 3 tab:

|                      |              |                  |
|----------------------|--------------|------------------|
| Case Cost            | Measure #    | Item Reorder No  |
| Case Pack            | Package Size | Location         |
| Gross Margin         | Retail Pack  | No. of Labels    |
| Suggested Base Price | Aisle #      | Long Description |
| Category/Sub         | Shelf #      | Label Format     |

Page 24 of 25

RBO Release Notes

[RBO 4.05.00 Release Notes](#)

[RBO 4.05.01 Release Notes](#)

[RBO 4.05.02 Release Notes](#)

## **ACS-IR Apply Process**

The apply process for ACS-IR is batching process that takes advantage of the NCR SIL processor and batching mechanisms. After maintenance is created and staged, the release process uses a four-step process to apply the maintenance to the POS and RBO.

### **Step 1 – Preparing the items**

The first step is to prepare the staged items. This process collects all POS fields and generates a SIL file for the items to be released. Once the SIL file is created, it is transferred to the ACS-IR system to the C:\TCI folder.

### **Step 2 – Processing the items**

Processing takes place on the ACS-IR system and is a two-step process. To process the items, the DataPump process copies the SIL file from the C:\TCI folder to the C:\SIL\In folder and waits until the SIL process is complete. Next the DataPump executes the batch created when the SIL file was processed and waits until it is complete. RBO waits for the DataPump to indicate that the job is complete by creating the file PdpJobComplete.txt.

### **Step 3 – Processing errors**

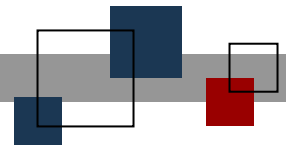
After the DataPump indicates that the job is complete, RBO collects error information from the appropriate error logs to determine if errors occurred while processing. These items are separated from the rest of the items during the apply process to keep the systems in sync.

### **Step 4 – Applying the changes**

After the errors have been collected and written to the error log in RBO, the items for which no error was reported are applied to the RBO database tables and marked as applied. Those for whom errors were reported are not applied and listed in the errors section at the bottom-right pane of Release Manager.







**© StoreNext Retail Technologies LLC 2007**

StoreNext Retail Technologies LLC endeavors to ensure that the information in this document is correct and fairly stated but does not accept liability for any error or omission.

The development of StoreNext products and services is continuous and published information may not be up to date. It is important to check the current position with StoreNext. This document is not part of a contract or license save insofar as may be expressly agreed.