








ScanMaster

-  *Release Notes and What's New*
-  *ScanMaster 2.3.0*
- 
- 
- 

ScanMaster V2 Release Notes and What's New

Date of Issue	Product Identification		Brief Description
	Number	Part Number	
March 2005	45001/082	89000197	2.1.2 Release
February 2006	45001/082	89000275	2.3.0 Release

**© Copyright StoreNext Retail Technologies LLC 1995-2006
All rights reserved**

This publication is protected by federal copyright law. No part of this publication may be reproduced or transmitted into any human or computer language in any form or by any means, stored in a retrieval system, transmitted, redistributed, translated or disclosed to third parties, or de-compiled in any way including, but not limited to, photocopy, photograph, electronic, mechanical, magnetic or manual without the express written permission of StoreNext Retail Technologies LLC or its licensors, if any. All copies, so authorized, shall contain a full copy of this copyright notice.

StoreNext Retail Technologies LLC endeavors to ensure that the information in this document is correct and fairly stated but does not accept liability for any error or omission. StoreNext Retail Technologies LLC makes no representation or warranties with respect to the contents hereof, and specifically disclaims any implied warranties of merchantability or fitness for a particular purpose or non-infringement. No commitments by StoreNext or its suppliers are made from this documentation which is provided for information only.

Development of StoreNext products and documentation is continuous: StoreNext Retail Technologies LLC reserves the right to revise this publication and to make changes from time to time in the contents hereof or in the products herein described or discussed without notice and without any obligation of StoreNext Retail Technologies LLC to notify any person or organization of such revision or changes. Information published in this document will likely become obsolete over time and it is recommended that users regularly check for updates and newer versions.

StoreNext Retail Technologies LLC has prepared this manual for use by users, authorized third parties and personnel of StoreNext Retail Technologies LLC as a guide to the proper installation, operation, customization and/or maintenance of StoreNext Retail Technologies LLC equipment and software. The drawings and specifications contained herein are the property of StoreNext Retail Technologies LLC and/or its licensors.

Third-party products, services, or company names referenced in this document may be trademarked or copyrighted by their respective owners, and are for identification purposes only.

Copyrights, trademarks and license agreements shall be governed and construed in accordance with the laws of the State of Texas and the Federal Arbitration Act, and shall benefit Retailix, its successors, and assigns.

Address comments and corrections to:

StoreNext Retail Technologies LLC
Software Program Director
6100 Tennyson Parkway
Suite 130
Plano, Texas 75024

Table of Contents

Table of Contents	1
Introduction	2
2.03.00 Enhancements	3
U-Scan Interface	3
Vendor Gift Card Program.....	3
System Configuration Editor by Function	4
Delivery Receipt Function	10
Support of Weight Field for S&H GreenPoints	11
Security Option for the Quantity (QTY) Key	11
Enhancements from 2.02.00 patches carried into 2.03.00-050	11

Introduction

Several new features and enhancements were made recently to the ScanMaster system as a result of customer change requests and internal research and development. These changes are reflected in the accompanying 2.03.00-050 software.

Please keep this system update with your current User Guide for quick reference. If you have any questions regarding this release, please contact StoreNext Support.

2.03.00 Enhancements

U-Scan Interface

ScanMaster has been interfaced to the U-Scan Self-Checkout system using the new ScanMaster Self-Checkout API. This is a direct communication interface, which eliminates the need to have U-Scan parse data from the ScanMaster display. This interface was built utilizing the same interface mechanism used to interface the ISS45 POS application with U-Scan. ScanMaster must be installed on the U-Scan configured for touch-screen operation. Direct mode from the U-Scan Cashier station also utilizes ScanMaster's touch screen operation.

Vendor Gift Card Program

ScanMaster can now sell and activate Vendor Gift Cards, which have EAN 128 labels. During sale entry, the Vendor Gift Card is scanned. The Gift Card is looked up in the item file to get the price and the designated for activation at end of sale. Because the entire data set for the Gift Card was captured during sale entry, there is no need to rescan the Gift Card during activation. The Gift Card is automatically called for activation once the sale is tendered. The Scanner must be programmed to scan EAN 128 labels.

Note: Each in-store EFT vendor will also have to support this feature in their ScanMaster Universal Payments Interface implementation

Register Control File Option

As part of this enhancement, the following Register Control File Option has been added to the Utilities tab:

Enable Vendor Gift Card Prgm [Utilities]

This field requires a Yes or No. If you set this field to "Yes", One Pass vendor gift cards may be both activated and used as tender at the POS.

System Configuration Editor by Function

The System Configuration Editor is the first option on the ScanMaster Personalization Menu. Click on that button (or press Alt+Y) to access the System Configuration Editor Window. The System Configuration Editor establishes the settings for both the Back Office and POS Workstations.

The Back Office and POS workstation settings work together to serve store customization requirements. Use this section in conjunction with the alphabetical listing (and detailed descriptions) of System Configuration settings found later in the chapter.

Listed below are the functional groups of the settings that need to be adjusted based on specific store requirements. Identify the functional group, locate the relevant settings and review the definition for each option setting in the alphabetical listing.

All settings are changed using ScanMaster's System Configuration Editor. Back Office Settings are changed using the fields listed under the column headed by the computer's name within both the **Global/Store** and **BackOffice** Tabs. Back Office Settings that have a POS Workstation component are listed under the Global/Store Tab along with each workstation's (i.e. "01", "02", "03", etc.) setting.

Note: A change made to one or more of these components will automatically apply the change to the Back Office Setting as well as all other workstations. Settings may differ from one another if the system was upgraded to ScanMaster 2.03.

POS Workstation Settings are changed using the fields listed under the column headed by the workstation's number (i.e. "01", "02", "03", etc). POS Workstation settings are grouped into related tabs (i.e. "Items", "Media", "Security", etc).

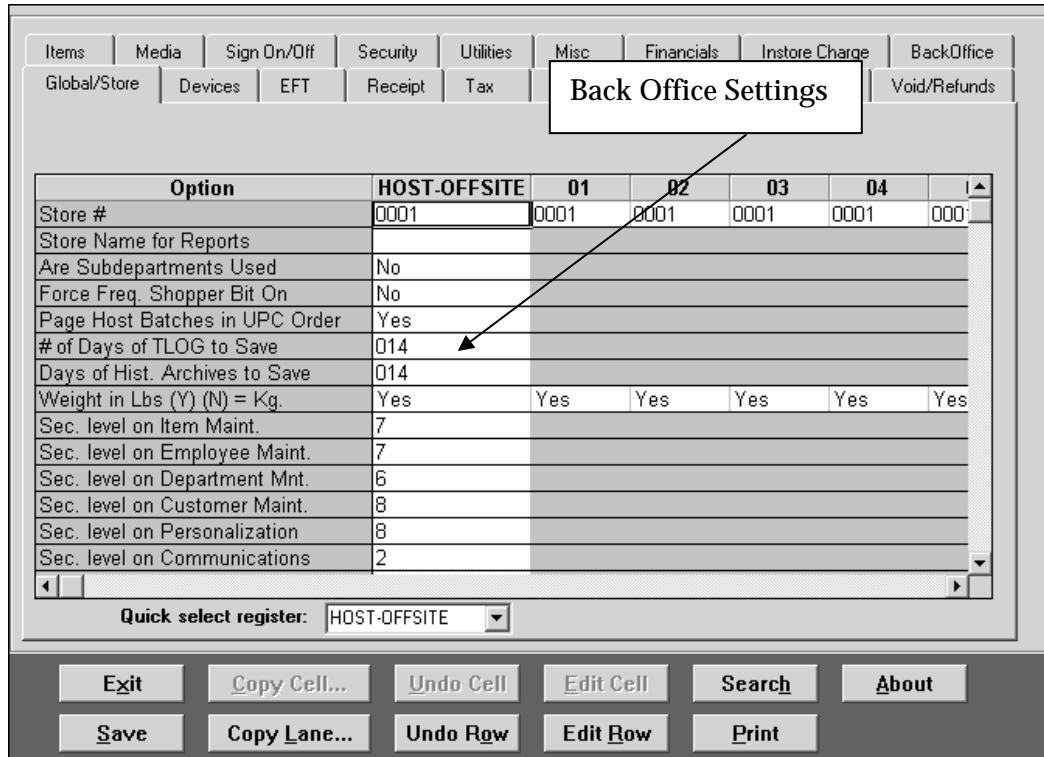


Figure 1: System Configuration Editor (Back Office Settings)

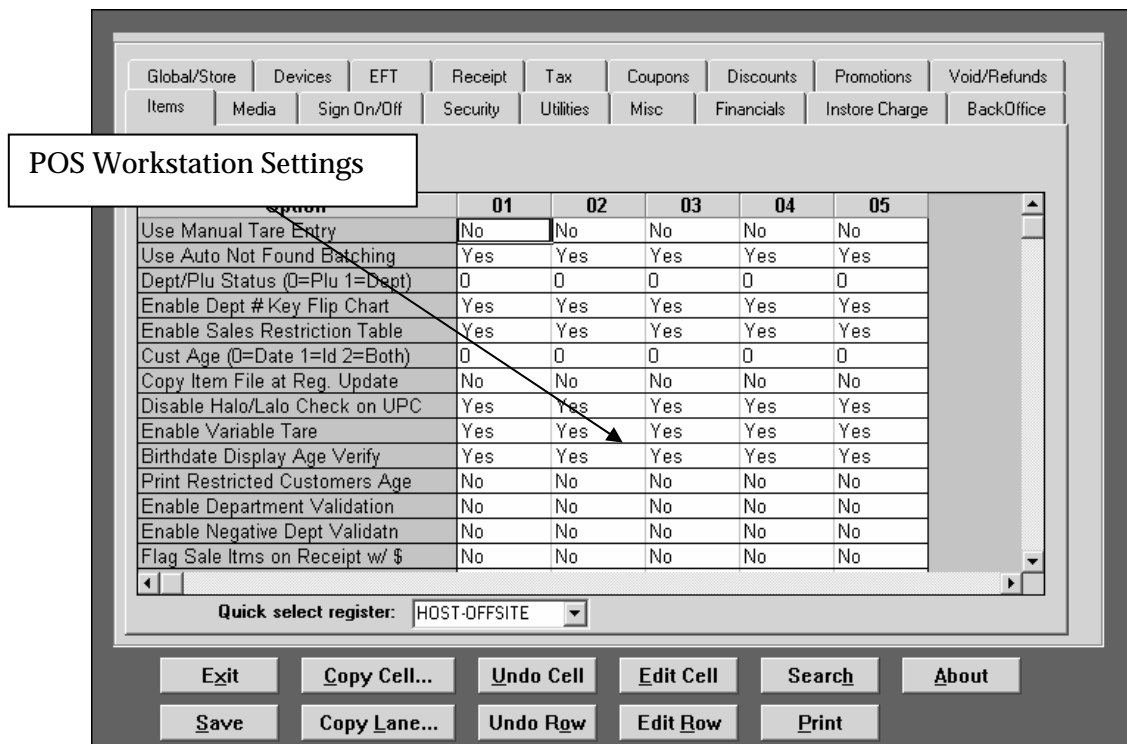


Figure 2: System Configuration Editor (POS Workstation Settings)

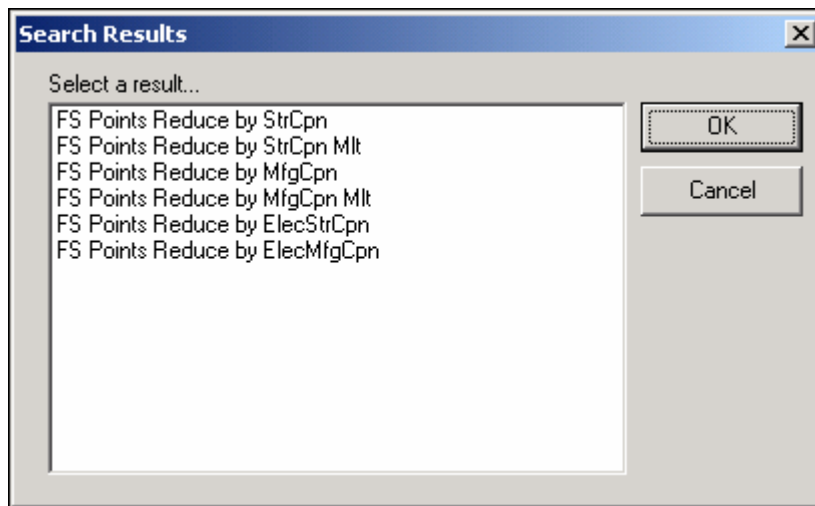
The functional groups listed below are detailed on the following pages. The tab location for each POS Workstation setting hereafter is listed in parentheses.

Major Area	Functional Group
Accounting	Balancing / Reports Discounts Electronic Journal In Store Charge Override / Refund / Void / Media Swap Tax Tender Media (Checks / WIC / Charge / EFT / EBT)
Maintenance	Customer Receipt and Display Department / Subdepartment Employees and Security Tare / Weighed Items Item (PLU) File / Item Movement
POS Functions	POS Functions - Miscellaneous
Promotions	Electronic Coupons Frequent Shopper Manufacturer Coupons Store Coupons Store Coupons (Print) MultiMedia
Third Party Software	Third Party Software
Workstation Peripherals	Workstation Peripherals

POS Workstation Settings

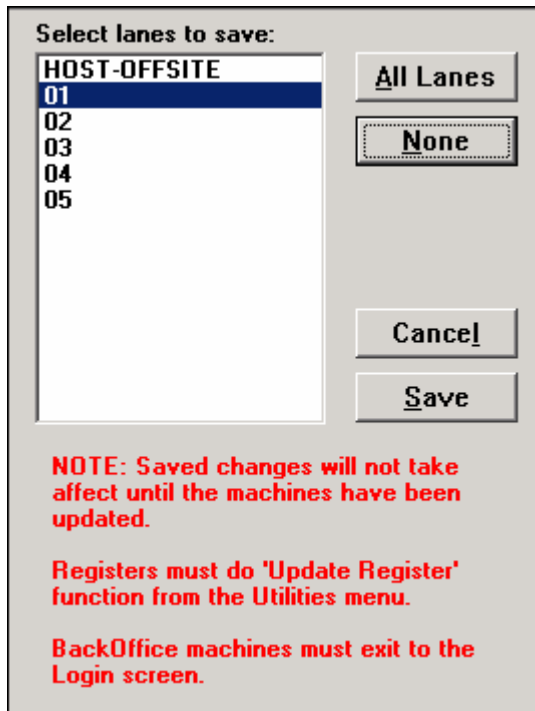
POS Workstation Settings establish parameters for each POS Workstation. Settings are changed using the fields listed under the column headed by the workstation's number (i.e. "01", "02", "03", etc). POS Workstation settings are grouped into related tabs (i.e. "Items", "Media", "Security", etc).

When searching for a desired option, click on the **SEARCH** button and enter key word(s) to initiate a search. Results will be listed in a window:



Double-click the setting you wish to edit or highlight (click) the setting and then click the **OK** button.

When saving POS Workstation Settings, a window will appear requesting if the changes be applied to all lanes:



Select lanes to save:

HOST-OFFSITE
01
02
03
04
05

All Lanes
None
Cancel
Save

NOTE: Saved changes will not take affect until the machines have been updated.

Registers must do 'Update Register' function from the Utilities menu.

BackOffice machines must exit to the Login screen.

You may highlight (click) those selected lanes to receive the changes or click the **All Lanes** button to automatically highlight all lanes. Click the **Save** button to finishing saving those changes. You must perform the “Update Register” Utility function before these changes are implemented on the POS Workstation.

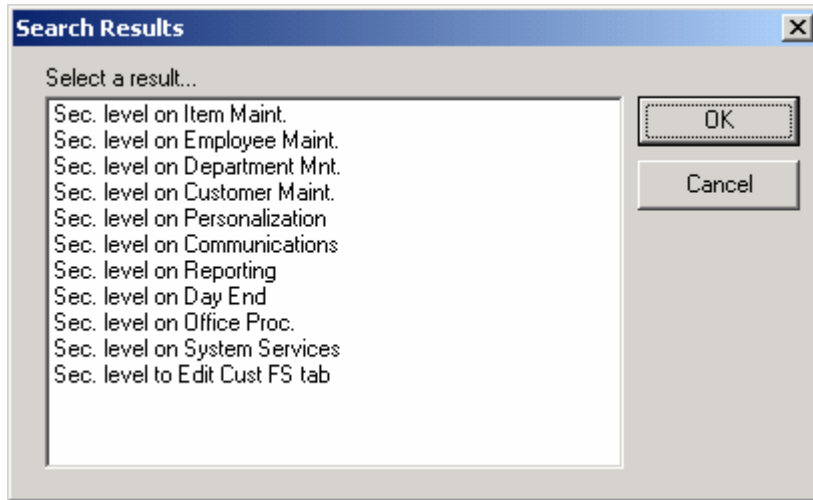
Back Office Settings

The Back Office Settings establish parameters for the ScanMaster Server and Back Office Workstation(s).

Back Office Settings are changed using the fields listed under the column headed by the computer’s name within both the **Global/Store** and **BackOffice** Tabs. Back Office Settings that have a POS Workstation component are listed under the Global/Store Tab along with each workstation’s (i.e. “01”, “02”, “03”, etc.) setting.

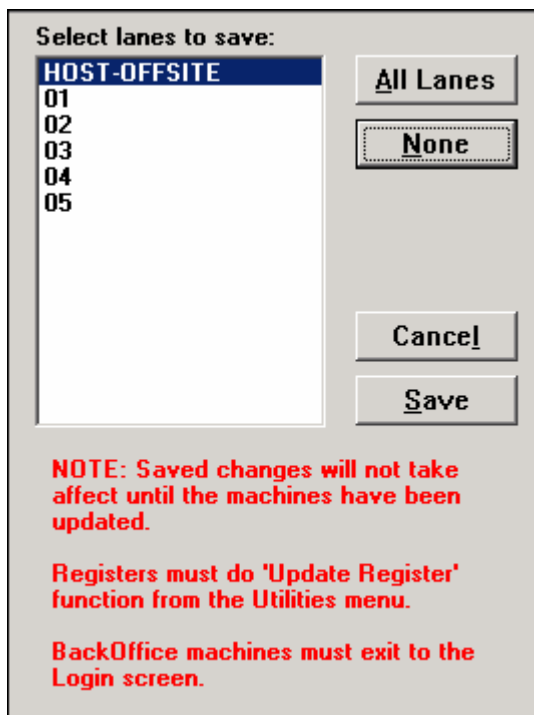
Note: A change made to one or more of these components will automatically apply the change to the Back Office Setting as well as all other workstations. Settings may differ from one another if the system was upgraded to ScanMaster 2.03.

When searching for a desired option, click on the **SEARCH** button and enter key word(s) to initiate a search. Results will be listed be listed in a window:



Double-click the setting you wish to edit or highlight (click) the setting and then click the **OK** button.

When saving Back Office Settings, a window will appear requesting if the changes (with POS Workstation components) be applied to all lanes:



If the changes do not have a POS Workstation component, click **Save**. You must exit to the login screen before these changes are implemented.

If the changes have POS Workstation components, you may highlight (click) those selected lanes to receive the changes or click the **All Lanes** button to automatically highlight all lanes. Click the **Save** button to finishing saving those changes. You must perform the “Update Register” Utility function before these changes are implemented on the POS Workstation.

Note: Please see Chapter 8 of the ScanMaster User Guide for additional details.

Delivery Receipt Function

The system has the capability to produce customer delivery receipts to attach to each bag of a delivery order. The numbered receipts contain customer information including customer number, name, phone number (optional) and delivery address.

New Register Control File Option

The following new Register File Control File option appears on the Receipt tab.

Enable Delivery Receipt Func [Receipt]

This field requires a Yes or No. If you set this field to “Yes,” the Delivery Receipt POS Function will be enabled. This feature produces customer delivery receipts to attach to each bag of a delivery order.

Using the Delivery Receipt Key

Note: The POS Workstation Setting “Enable Delivery Receipt Func” (Receipt Tab) must be enabled to use this feature.

Key Sequence for Delivery Receipt

1. Press the DELIVERY RECEIPT key.

Note: On the DynaKey™, Fujitsu Touch Screen or TeamKey POS workstations, the STATUS key must be pressed to access the Delivery Receipt key.

The operator screen prompts: “Enter Customer Number”.

2. Swipe the customer card or key-enter the customer number.

The operator screen prompts: “Enter # of Delivery Receipts to Print (1-99)”.

3. Enter the number of receipts to generate.

The receipts are printed.

Support of Weight Field for S&H GreenPoints

This release support was added to the S&H interface to support weight fields for weighted S&H discounts. An upgrade to the S&H software is also needed to support this feature.

Security Option for the Quantity (QTY) Key

The ScanMaster system has the option to prompt for Manager ID when the QTY key is used at the POS.

Register Control File Option

As part of this enhancement, the following Register Control File Options have been added to the Security tab:

Security on Quantity Entry [Security]

This field requires a Yes or No. If you set this field to “Yes”, a manager ID will be prompted and required to proceed after hitting the At/For key.

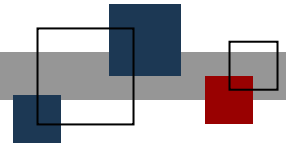
NOTE: Entry of a Quantity due to Enforce Qty item will NOT prompt for manager ID.

Enhancements from 2.02.00 patches carried into 2.03.00-050

Enhancements added to 2.02.00 patches included in the 2.03.00-050 release:

Note: Please see the Release Notes for 2.02.00-The Patch for further details.

- SIL Feature Clarifications
- Support for PSC Magellan Scanner/Scale Models QS 2500, QS6500, 8200 & 8500 for Fujitsu Terminals.
- Support for PSC Magellan Scanner/Scale Models QS 2500, QS6500, 8200 & 8500 for NCR Terminals
- Support Diners' Club Card as Master Card.



© StoreNext Retail Technologies LLC 2006

StoreNext Retail Technologies LLC endeavors to ensure that the information in this document is correct and fairly stated but does not accept liability for any error or omission.

The development of StoreNext products and services is continuous and published information may not be up to date. It is important to check the current position with StoreNext. This document is not part of a contract or license save insofar as may be expressly agreed.