

A horizontal row of various colored squares (red, blue, white) and rectangles, some overlapping, positioned above a grey horizontal line.

ScanMaster

The ScanMaster logo, consisting of a grid of blue dots arranged in a cross shape, with the word 'ScanMaster' in a serif font centered over it.

 *Release Notes and What's New*

ScanMaster 2.7.2-050



ScanMaster V2 Release Notes and What's New

Previous issues 2005-2007: 89000197 (2.1.2 Release); 89000275 (2.3.0 Release); 89000304 (2.3.1 Release Prelim); 89000317 (2.3.1 Release Final); 89000339 (2.4.0 Release); 89000376 (2.4.1 Release); 89000381 (2.4.2 Release); 89000411 (2.5.0 Release); 89000423 (2.5.1 Release); 89000454 (2.5.2 Release (Updated)); 89000491 (2.6.0 Release)

Date of Issue	Product ID Number	Part Number	Brief Description
September 2009	45001/082	89000531	2.6.1 Release
February 2010	45001/082	89000551	2.7.0 Release
March 2010	45001/082	89000560	2.6.1-080 Release
May 2010	45001/082	89000565	2.7.0-100 Release
June 2010	45001/082	89000571	2.7.0-110 Release
July 2010	45001/082	89000577	2.7.1 Release
August 2010	45001/082	89000588	2.7.0-130 Release
September 2010	45001/082	89000589	2.7.1-060 Release
February 2011	45001/082	89000612	2.7.2-050 Release

**© Copyright StoreNext Retail Technologies LLC 1995-2011
All rights reserved**

This publication is protected by federal copyright law. This document and its contents are the proprietary, confidential information and property of StoreNext.. Unauthorized disclosure, reproduction, distribution or use of this document and/or its contents in any form is strictly prohibited. No part of this publication may be reproduced or transmitted into any human or computer language in any form or by any means, stored in a retrieval system, transmitted, redistributed, translated or disclosed to third parties, or de-compiled in any way including, but not limited to, photocopy, photograph, electronic, mechanical, magnetic or manual without the express written permission of StoreNext Retail Technologies LLC or its licensors, if any. This document, notwithstanding the above, may be distributed in electronic or printed form to personnel who are employed by either (1) a StoreNext customer of the subject system of this document or (2) personnel from an authorized StoreNext dealer of the subject system of this document. All copies, so distributed and/or so authorized, shall contain a full copy of this copyright notice.

StoreNext Retail Technologies LLC has prepared this manual for use by users, authorized third parties and personnel of StoreNext Retail Technologies LLC as a guide to the proper installation, operation, customization and/or maintenance of StoreNext Retail Technologies LLC equipment and software. The drawings and specifications contained herein are the property of StoreNext Retail Technologies LLC and/or its licensors.

StoreNext Retail Technologies LLC endeavors to ensure that the information in this document is correct and fairly stated but does not accept liability for any error or omission. StoreNext Retail Technologies LLC makes no representation or warranties with respect to the contents hereof, and specifically disclaims any implied warranties of merchantability or fitness for a particular purpose or non-infringement. No commitments by StoreNext or its suppliers are made from this documentation which is provided for information only.

Development of StoreNext products and documentation is continuous: StoreNext Retail Technologies LLC reserves the right to revise this publication and to make changes from time to time in the contents hereof or in the products herein described or discussed without notice and without any obligation of StoreNext Retail Technologies LLC to notify any person or organization of such revision or changes. Information published in this document will likely become obsolete over time and it is recommended that users regularly check for updates and newer versions.

The trademarks StoreNext and Retailix are registered trademarks or trademarks of Retailix; all other trademarks or registered trademarks are the property of their respective owners. Third-party products, services, or company names referenced in this document may be trademarked or copyrighted by their respective owners, and are for identification purposes only.

Copyrights, trademarks and license agreements shall be governed and construed in accordance with the laws of the State of Texas and the Federal Arbitration Act, and shall benefit Retailix, its successors, and assigns.

Address comments and corrections to:

StoreNext Retail Technologies LLC
Software Program Director
797 Commonwealth Drive
Warrendale, PA 15086

Table of Contents

Table of Contents	i
Introduction	1
Online WIC EBT Support	2
Front Office	2
POS.....	12
Receipt Optimization	18
LaneHawk Support for Dynakey Operator Displays	20
Other Enhancements	22
Technical Reference Appendix	23
Release Database Changes	23
Out of Scope	25
Dependencies	27

Introduction

New features were made recently to the ScanMaster system as a result of customer change requests. These changes are reflected in the accompanying 2.07.02-050 software.

These enhancements are explained in detail in the following pages but are not included in your ScanMaster 2.07.01 User and Installation Guides.

Online WIC EBT Support

Online WIC EBT is replacing traditional paper-based WIC tenders (WIC checks and WIC CVV vouchers) in several states. Similar to other PIN-based EFT tenders, ScanMaster now supports Online WIC EBT cards issued from multiple state agencies. Mixed-basket transactions (those that includes both WIC and non-WIC items) are also supported in this release.

Note:

Similar to Electronic Food Stamps, Online WIC EBT on ScanMaster uses the Connected Payments interface via a PIN pad device to get WIC benefits.

Front Office

New Back Office Settings

To support Online WIC EBT, the following new Back Office Settings are found in the System Configuration Editor.

Note:

Back Office Settings are changed using the fields listed under the column headed by the computer's name within the Global/Store and BackOffice Tabs.

Store Address Line 1

Twenty-five (25) character alpha/numeric field. This parameter defines the first line of address information for the store.

Store Address Line 2

Twenty-five (25) character alpha/numeric field. This parameter defines the second line of address information for the store.

Store City

Twenty-five (25) character alpha/numeric field. This parameter defines the city where the store is located.

Store State

Two (2) character alpha/numeric field. This parameter defines the state where the store is located.

Store ZIP

Ten (10) character alpha/numeric field. This parameter defines the zip code for the store address. To handle various zip code formats, ##### or #####-#### are acceptable entries. (The dash is not entered).

Note:

The existing Back Office Setting "Store Name for Reports" will be used for Online WIC EBT (and truncated to 20 characters if necessary).

New POS Workstation Setting

To support Online WIC EBT, the following POS Workstation Setting is implemented in this release. (The tab where the setting is located within the ScanMaster System Configuration Editor is listed in brackets.)

Enable EBT WIC [EFT]

This field requires a Yes or No. When this parameter is set to "Yes", Online WIC EBT functionality will be enabled in the system.

Note:

When this parameter is set to "Yes", the Food Stamp subtotal will not show when pressing either the EBT Menu key or the second dynamic tender key (EBT) on Dynakey, Full Touch and Partial Touch systems – allowing EBT Cash and EBT WIC to be tendered without Amount Compulse. When set to "No", the Food Stamp subtotal is displayed by pressing the EBT Menu Key (or the second dynamic tender key) where an amount has not been previously entered by the cashier.

Removed POS Workstation Settings

Based on this development, the POS Workstation Settings "Accept Stand Beside 2nd EFS" and "Stand Beside 2nd EFS Desc" (EFT Tab) have been removed in this release.

Note:

Stores currently using the 2nd EFS (Electronic Food Stamp) tender must move to using a User Defined Tender (since the 2nd EFS previously reported as paper food stamp tender media).

New CONTROL.DAT Setting

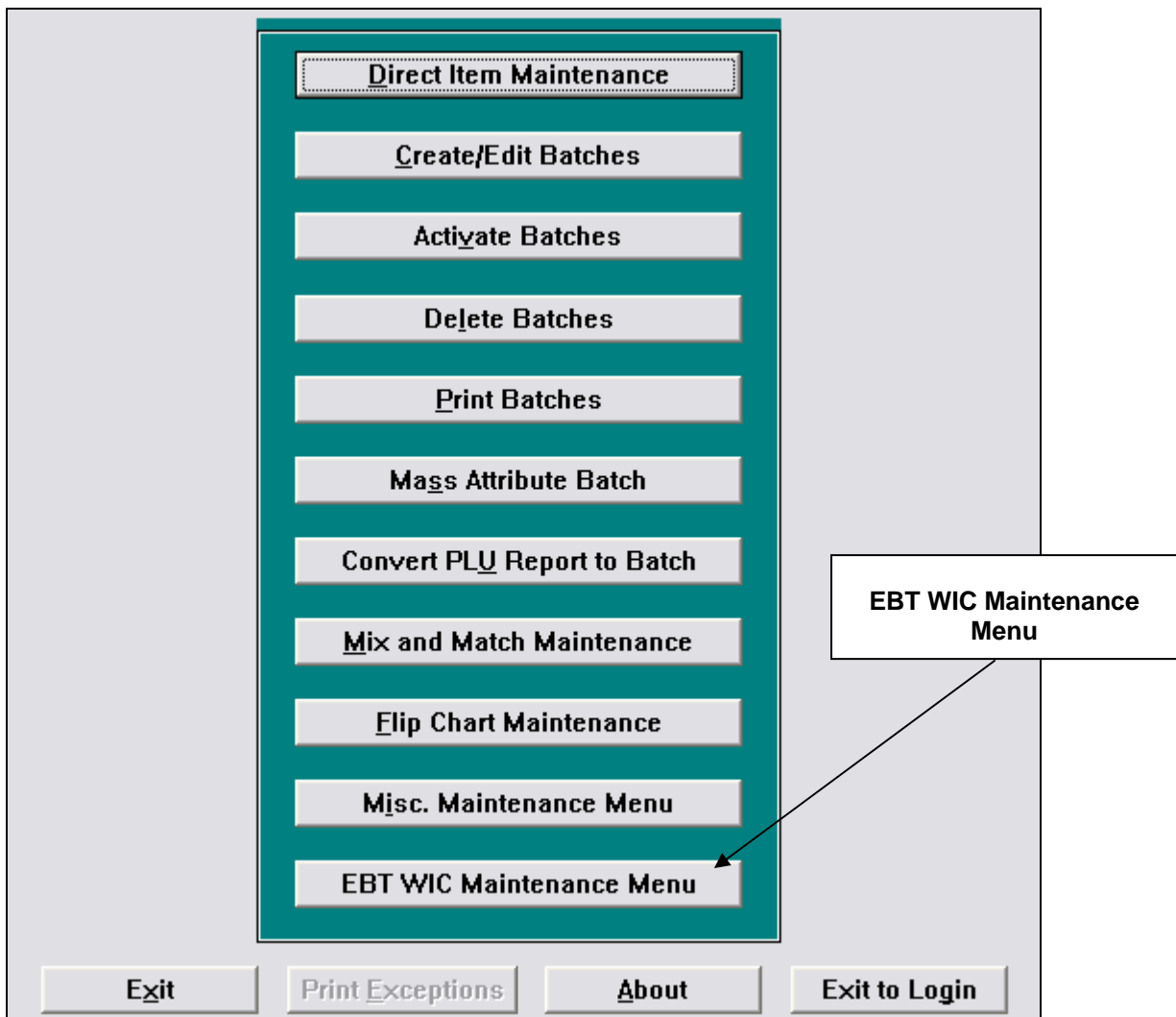
By default ScanMaster will print all the prescription benefits on the card to receipt, including items that have a zero benefit balance. Through a new

setting in the CONTROL.DAT file, the store has the option of improving the readability of the receipt by only displaying benefits for items that the WIC customer can redeem.

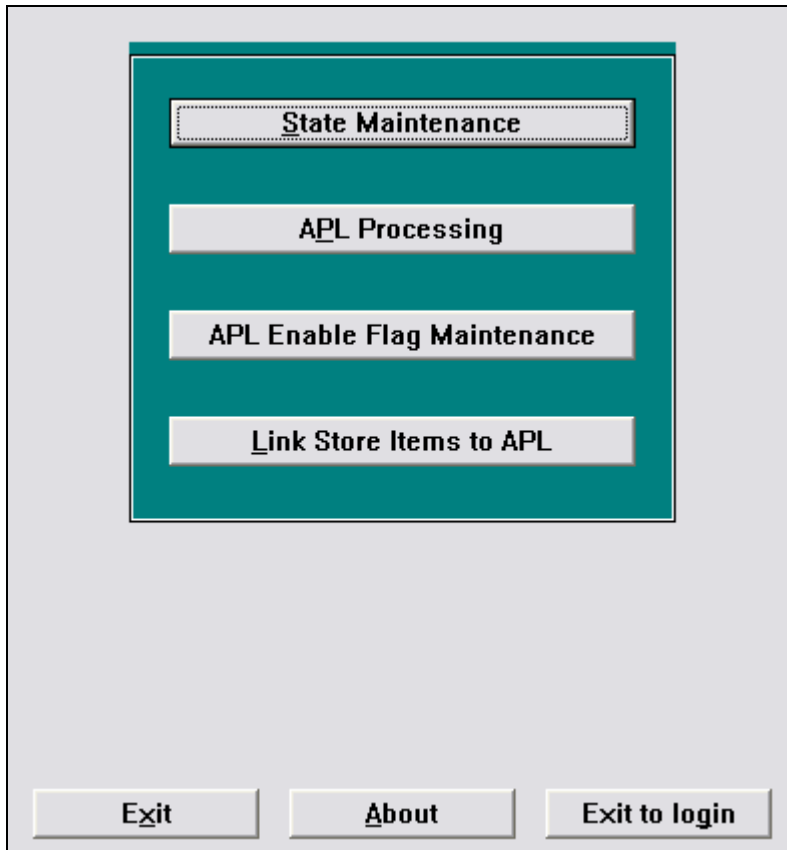
When the new “Print Only eWIC Benefits > 0” setting is set to “Yes” (1) in the CONTROL.DAT file and the new POS Workstation Setting “Enable EBT WIC” is set to “Yes”, only items with available benefit units that the WIC customer can redeem will be printed on the receipt benefit reports.

New EBT WIC Maintenance Menu Selection

The new EBT WIC Maintenance Menu is the last selection under the Item Maintenance Menu:



When selected the EBT WIC Maintenance selections appear:



State Maintenance

State Maintenance is the first option on the EBT WIC Maintenance Menu. Select this option to configure a state for Online WIC EBT processing.

AK - ALASKA Active

Postal Code: AK

FIPS: 02

State Name: ALASKA

BIN 1: 000000 BIN 2: 000000 BIN 3: 000000

EBT ID: 0000

Pan Length: 00

Training Digit Position: 00

Start of PAN Mask: 00

End of PAN Mask: 00

Forwarder ID: 0000000000

Merchant ID: 0000000000000000

State CVB Category: 019

Exit <<Previous Next>> Save Delete Print List About

To select a state or tribal organization to configure, click the field's selection arrow. Scroll down and click on the desired state or tribal organization (or optionally enter the first letter of the desired state or tribal organization). The (read-only) Postal Code, FIPS Code and State Name fields are automatically populated.

Note:

The FIPS Code is a two-digit numeric Federal Information Processing Standard (FIPS) code that uniquely identifies a state, territory or commonwealth.

Field Descriptions

Active: Check this flag to indicate the store will support electronic WIC for this state or tribal organization.

BIN 1 – 3: Enter (up to three) numbers used to identify the institution(s) that issue the state or tribal organization electronic WIC card.

EBT ID: Enter the ID (4-character alphanumeric) that identifies the grocer to the state (as assigned by the WIC Agency).

PAN Length: Enter the length of Primary Account Number as issued by WIC agency.

Training Digit Position: Enter the Primary Account Number digit location (as determined by the WIC agency) that will indicate a Training Card (when holding a value of 9).

Start of PAN Mask: Enter the position (as determined by the WIC agency) to start masking the PAN number on the receipt or display.

End of PAN Mask: Enter the position (as determined by the WIC agency) to stop masking the PAN number on the receipt or display.

Note:

PAN Masking for EBT WIC cards (for receipt or display) does not affect what is written to the Electronic Journal.

Forwarder ID: Enter the WIC agency assigned identifier of the entity that will send the file(s) to the state or tribal organization.

Merchant ID: Enter the WIC agency assigned identifier that indicates the entity that accepted the card used in the transaction.

State CVB Category: Enter the state or tribal organization category ID for Cash Value Benefit items. (The default is "019").

Note:

Cash Value Benefit is the electronic version of CVV (Cash Value Voucher) paper vouchers used to purchase fresh fruits and vegetables.

APL Processing

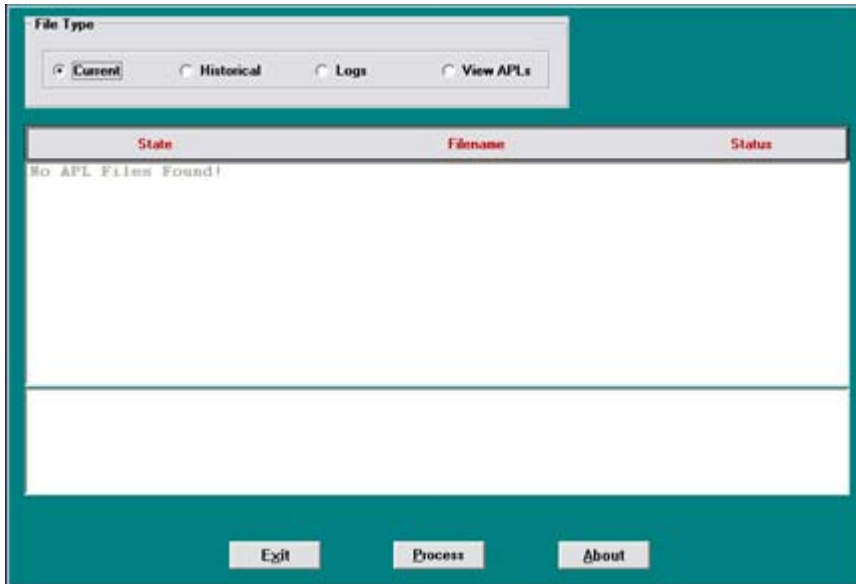
APL (Approved Product List) Processing is the second option on the EBT WIC Maintenance Menu. The application will process the state APL files into the ScanMaster database. This function is run automatically through end-of-day processing or can be processed manually through this menu selection.

Note:

The store must first place the state APL files in the <LAN Drive>:\EBT_WIC\<StateName> folder.

Note:

When finished processing, the APL file is placed in the <LAN Drive>:\EBT_WIC\<StateName>\History folder. If there is an existing APL file in the state's history folder when APL processing is performed, ScanMaster will run a checksum comparison on the old and new file. If the file is determined to be new, it will be processed. If not, the APL file is deleted and no additional processing is done.



Field Descriptions

File Type: Click the **Current** radio button to display all current state APL files to process. Click the **Historical** button to display all processed state APL files. Click the **Logs** button to view the APL and POS Online WIC EBT logs for a state. Click **View APLs** to view both current and processed APL files.

Note:

A button is disabled if no files exist.

Note:

APL processing logs (EWxxmddy.log) are located in their respective state folders (<LAN Drive>:\ EBT_WIC\<StateName>) where xx is the State Postal Code.

Data is logged when:

- No new state file was located.
- The APL was found and processed or was found and failed validation.
- A duplicated APL was located during EOD.
- The APL was moved to the history location.
- An old APL was removed from history.
- The APL was processed during EOD.

These state APL logs as well as the POS Online WIC EBT logs (WC*.*) are archived to the History zip file as part of end-of-day processing. (The logs are deleted after the archive.)

State: This field displays the state or tribal organization associated with the file\log.

Filename: This field displays the filename associated with the file\log.

Status: This field displays the status of the file associated with the file\log.

When an APL file is highlighted and the **Process** button is selected, the results are displayed:

PC Enabled	Store UPC	APL UPC	APL UPC Desc.	Cat#	SubCat#	Pack S
KY 1	00000000411	00000000040112	Bananas	19	000	001.0
KY 1	00000000412	00000000040136	Oranges Navel	19	000	001.0
KY 1	00000000608	00000000006088	Greens Kale Ca	19	000	001.0
KY 1	00000000690	00000000006903	Onions Sweet	19	000	001.0
KY 1	000000003000	000000000030007	Apples Alkaene	19	000	001.0
KY 1	000000003001	000000000030014	Apples Aurora/Southe	19	000	001.0
KY 1	000000003002	000000000030021	Apples Cantared	19	000	001.0
KY 1	000000003003	000000000030038	Apples D'Estivale	19	000	001.0
KY 1	000000003004	000000000030045	Apples Discovery	19	000	001.0
KY 1	000000003005	000000000030052	Apples Golden Delici	19	000	001.0
KY 1	000000003006	000000000030069	Apples Ingrid Marie	19	000	001.0
KY 1	000000003007	000000000030076	Apples Lochbuie	19	000	001.0
KY 1	000000003008	000000000030083	Apples Rubinette	19	000	001.0
KY 1	000000003009	000000000030090	Apples Russet	19	000	001.0
KY 1	000000003010	000000000030106	Apples Cripps Red	19	000	001.0
KY 1	000000003011	000000000030113	Apples Worcester	19	000	001.0
KY 1	000000003012	000000000030120	Pears Abate Fetel	19	000	001.0
KY 1	000000003013	000000000030137	Pears Beurre Hardy	19	000	001.0
KY 1	000000003014	000000000030144	Pears Bon Rouge	19	000	001.0
KY 1	000000003015	000000000030151	Pears Clara Friis	19	000	001.0
KY 1	000000003016	000000000030168	Pears Concorde	19	000	001.0
KY 1	000000003017	000000000030175	Pears Conference	19	000	001.0
KY 1	000000003018	000000000030182	Pears Durondeau	19	000	001.0
KY 1	000000003019	000000000030199	Pears Flamingo	19	000	001.0
KY 1	000000003020	000000000030205	Pears General Lecler	19	000	001.0
KY 1	000000003021	000000000030212	Pears Guyot	19	000	001.0
KY 1	000000003022	000000000030229	Pears Josephine	19	000	001.0
KY 1	000000003023	000000000030236	Pears Passe Crassane	19	000	001.0
KY 1	000000003024	000000000030243	Pears Rocha	19	000	001.0

The fields displaying on the results screen are as follows: (Use the scroll bar to display all columns).

PC: Postal Code

Enabled Flag: 0 (for No), 1 (for Yes)

Store UPC: Twelve (12) digit UPC.

APL UPC: UPC/PLU as it appears in the host file (including the check digit).

APL UPC Desc: Twenty (20) byte item description from the host file.

Cat. #: Two (2) digit state category number.

SubCat#: Three (3) digit state subcategory number.

Pack Size: Package value.

APL Qty: Benefit quantity.

Qty. Desc: Quantity description.

Max Price: Maximum allowable price.

Start Date: Effective date of the benefit.

End Date: Ending date of the benefit.

APL Enable Flag Maintenance

APL Enable Flag Maintenance is the third option on the EBT WIC Maintenance Menu. This function is not enabled in this ScanMaster release but will be used to support Least Expensive Benefit (LEB) items in the future.

Note:

LEBs are store brands of items within the Online WIC EBT program that are cheaper than standard brands. When store LEBs are enabled in the future, the corresponding state APL items must be disabled from Online WIC EBT tender eligibility.

Link Store Items to APL

Link Store Items to APL is the fourth option on the EBT WIC Maintenance Menu. The application allows the store to create a cross reference file which maps the store's non-standard, produce PLU numbers to the standard PLU numbers used in the state or tribal organization's Approved Product List.

The screenshot shows a software interface for linking store items to APL. It features a form with the following fields:

- Store UPC/PLU:** 0000000000000000411
- Description:** PEPSI-4-12PK_3
- APL Item:** 04011

Below the form, there is a status area with the following text:

KENTUCKY
WEST VIRGINIA

PLU is available for linking.
No State APL file processed. Can't link.

At the bottom of the window, there are several buttons: Exit, Save, <<Previous, Next>>, Delete, Print List, and About.

Field Descriptions

Store UPC/PLU: Enter in the store PLU\UPC code for the CVB (Cash Value Benefit) item.

Note:

The application limits the APL items to 5-digits or less.

Description: (Read only) The store description of the item.

APL Item: Enter in the state PLU\UPC code for the item.

Note:

The APL item number must be from the designated State CVB Category.

Note:

When saving a link between the store item to the APL, the following confirmation or denial messages may appear for each active state or tribal organization:

“PLU is available for Linking”

“No State APL file processed. Can't link.”

Keyboard Configuration Changes

The Keyboard Configurator's "Foodstamp" button has been changed to "EBT Media" for hard-key type installations. The key will function in a similar manner to the User Defined key, presenting a drop-down selection for the EBT tender function (EBT WIC, EBT FS, EBT Cash or EBT Menu).

Note:

The EBT Menu selection signifies to the POS that it needs to present its own menu for the EBT Tenders.

In addition, the "eWIC Balance Inquiry" function has been added as a status key selection when configuring of Full Touch, Partial Touch and Dynakey screens.

Note:

For hard-key type installations, the eWIC Balance Inquiry is performed by pressing Price Inquiry button followed by the EBT WIC Tender.

Media Configurator for Online WIC EBT Media

The media selections on the Media Configurator Menu have changed in this release. **FOODSTAMP** has changed to **EBT WIC**, **EFS** to **EBT FS** and **EBT** to **EBT Cash**.

The configuration options available for the EBT WIC media selection are displayed in the screen below. (See the *ScanMaster 2.07.01 User Guide* for information on each setting).

Ewic for Register 01

ENABLE THIS MEDIA (Y/N)	N
AMOUNT COMPULSE (Y/N)	N
MAX. TENDER AMOUNT (MGR REQ.)	9999999
OPEN DRAWER 0=NO 1=FINAL 2=IMD	1
DATA CAPTURE/DISPLAY PROMPT	N
DATA CAPTURE PROMPT MESSAGE	00000000000000000000
PRINT SIGNATURE SLIP (Y/N)	N
ALLOW PICKUP (Y/N)	Y
ALLOW PICKUP COUNTS (Y/N)	N
ALLOW LOAN (Y/N)	Y
USE ELEC PAYMENT AUTH (Y/N)	N
PIN ENTRY REQUIRED (Y/N)	N
SIGNATURE LINE ON SLIP (Y/N)	N
ALLOW MANUAL ACCOUNT ENTRY	N
1-EFT VOID 2-NO RETURN TO SALE	0
ENABLE TERM AMT VERIFICATION	N

Store Reconciliation Report Considerations

It is the responsibility to the store to edit the Store Reconciliation Report to reflect that Foodstamp is now EBT WIC, EFS (Electronic Food Stamps) is now EBT FS and EBT (Electronic Benefit Transfer) is now EBT Cash.

POS

Tender Key Change

The layout of the tenders on the dynamic key (Dynakey, Full Touch, Partial Touch) systems have been reorganized in this release. EBT WIC has replaced Food Stamps as the second tender. The label on the existing (second) dynamic tender key has changed from "FOOD STAMPS" to "EBT". There are three sub-selections now listed under the EBT tender:

- **EBT WIC**
- **EBT FS** (replaces Electronic Food Stamp)
- **EBT Cash** (replaces Paper Food Stamps)

Note:

The 2nd EFS tender is now obsolete. In addition, EBT no longer appears as a sub-selection under **CHARGE** (the fourth dynamic tender key).

Subsequently, the following related changes are found in this release:

- Tax Exempt totals on the Store Totals Report include transactions where items were tendered with electronic WIC.
- The Media Swap Function lists EBT WIC as a tender that can be swapped (in place of paper Food Stamps).

POS Online WIC EBT Tendering

POS Workstations support Online WIC EBT tendering using the following steps:

1. Cashier scans items and totals the ticket.

Note:

Electronic WIC item eligibility is determined by the state Approved Product Lists only and not by the WIC and WIC CVV Status Flags in ScanMaster Item Maintenance.

2. Cashier / Customer tenders with Online WIC EBT.

Note:

Manual entry of the Online WIC EBT Card Number is allowed but must be enabled through the Media Configurator's "Allow Manual Account Entry" setting.

Note:

If the Postal Code associated with customer's state does not match the Postal Code for a WIC item in the ticket, the error message "INVALID <postal code> WIC ITEM FILE!" message displays.

Note:

If the Postal Code associated with customer's state is not enabled in the WIC State File, the error message "<postal code> WIC NOT AUTHORIZED!" message displays.

3. POS performs a "Pre-Authorization" (using Connected Services) through MTXEPS OpenEPS.
4. POS gathers state Online WIC EBT prescription data to determine item eligibility.
5. POS prints a slip for the customer that includes beginning benefits balance and the item benefits Online WIC EBT will cover.

6. The POS prompts: DOES CUSTOMER APPROVE TRANSACTION?
 - If the cashier selects CLEAR / NO, the POS returns to tender entry.
7. The cashier selects ENTER / YES and the POS performs a “Completion” with OpenEPS. An update of the customer’s prescription benefits is performed and items purchased are deducted from the customer’s Online WIC EBT account.

Note:

ScanMaster automatically performs “Combined Progressive Redemption” rules (when Aggressive Redemption is allowed for the EBT WIC item). Benefits are used from an item’s specific subcategory first, then from the item’s “Broadband” subcategory. It also allows item redemption to be split across the specific and broadband subcategories (when there are insufficient benefits in the specific subcategory).

8. The POS receives the host response and prepares the customer receipt which restates the beginning and ending prescription benefits on the customer receipt.

Note:

If the cashier needs to return to Sale Mode after a “Completion”, a separate “Void of Completion” EFT transaction will need to be executed through OpenEPS.

9. A log file (<Def Drive>:\GROCERY\FILES\LOG\WCmmddy.rrr) is created (where mmddy is the date and rrr is the register number).

Note:

The log file records every Online WIC EBT communication with MTXEPS for *Pre-Authorizations*, *Completions* and *Void of Completions*. The log is recorded locally on the POS Workstation and is copied to the server when the POS Workstation performs an End of Day. The records are variable length (comma delimited) and include the date, time, POS transaction number, type and RxData.

10. The cashier may accept other tenders to complete the transaction (for mixed baskets and/or insufficient prescription benefits).
11. The POS prints the sales receipt and Online WIC EBT reports (Beginning Balance, Benefit Redemption and Ending Balance).

Food Stamp Subtotal Change

For Dynakey, Full Touch and Partial Touch screens, if the POS Workstation Setting “Enable EBT WIC” is set to “No” the Food Stamp subtotal now displays when the EBT Menu Key is selected (and a tender amount has not yet been entered by the cashier.) If “Enable EBT WIC” is set to “Yes”, the Food Stamp subtotal will display by pressing the “EBT FS” button. (The “EBT FS” button is the second dynamic tender key selection after first selecting EBT Menu).

Note:

The Food Stamp subtotal is always available to the cashier in a dedicated space on the operator display.

On hard-key type installations, the Food Stamp subtotal is accessible by pressing either the EBT MENU key or EBT FS tender key (and a tender amount has not yet been entered by the cashier)

Online WIC EBT Balance Inquiries

Online WIC EBT Balancing Inquiries (for the cardholder’s prescription benefits) are performed differently depending on the keyboard. For hard-key type installations, the eWIC Balance Inquiry is now performed on systems by pressing Price Inquiry followed by the EBT WIC Tender.

For Dynakey, Full Touch and Partial Touch screens, the “eWIC Balance Inquiry” button (a new Status Key) is used to perform Online WIC EBT Balancing Inquiries.

A receipt is printed listing the available prescription benefits for the customer (example below):

```
=====
WIC Merchant ID: 4120      Term #: 234
      Trace #: 233432
      11/12/2007 12:31 PM

      Card #: *****1271

      WIC Balance Remaining
1.00 Gal.  Whole fluid milk
24.00 Oz.  Cereal - hot and cold
2.00 Can   Good Stuff Formula
4.73 $$$   Fruit and Vegetables

      Benefits Expire at 12:00:00 am on
              11/21/2007

      Approval Code: 452334
```

New Tendering Rules \ Prompting

When tendering to either the EBT WIC or EBT Cash tender (without an amount previously entered) the Food Stamp subtotal now displays with a new confirmation prompt "Are you sure?" If ENTER / YES is selected, the POS Workstation continues with tendering. If CLEAR / NO is selected, the POS Workstation returns to tender selection.

In a mixed basket transactions, once the customer has partial tendered with Online WIC EBT, the void of items is not allowed. The Online WIC EBT tender must first be cancelled and the ticket must be returned to sale mode.

Online WIC EBT and paper WIC vouchers cannot be tendered in the same transaction. When used, Online WIC EBT must be tendered first in multiple tender transactions.

Note:

Partial tendering with WIC checks is still prohibited.

Note:

Taxes are forgiven on taxable items that are covered by the customer's Online WIC EBT prescription benefits.

The EBT tender on a Dynakey screen now executes the EBT Menu and can no longer be used to automatically execute a default (Food Stamp) tender.

Coupon / Discount Handling

ScanMaster employs the following rules when handling discount and/or coupons for electronic WIC items (to maximize the customer's electronic WIC benefits).

- A free item is never deducted from a customer's prescription benefits.
- For multiple purchases of the same item, non-couponed electronic WIC items will be deducted from a customer's prescription benefits first (if possible) before couponed items.
- Total time discounts will be distributed evenly between discountable items (reducing any electronic WIC prescription benefit approval amounts for claim adjustment purposes).

Self Checkout Change

The EBT WIC tender has replaced the paper Food Stamp tender on self-checkout terminals.

Receipt Optimization

To reduce the amount of paper required to print ScanMaster receipts, the following customer receipt printing modifications have been implemented in this release.

- Blank lines are no longer used before and after the asterisk lines in the Frequent Shopper information area.
- Blank lines are no longer used after the frequent shopper program header in the information area.
- The one blank line before the Flexible Spending Account section and four blank lines after have been omitted.
- Other blank lines on the receipt used for separation purposes have been omitted (unless absolutely needed to make the receipt understandable). Blank lines removed are:
 - One line before subtotal Information (after items).
 - One line between Electronic Coupon Heading and Electronic Coupon List.
 - One after Electronic Coupon List.
 - One line before TODAY'S TOTALS in the Frequent Shopper Message.
 - One line after HISTORY TOTALS in the Frequent Shopper Message.
 - The one line before POINTS REDEEMED in the Frequent Shopper Message prints only when points are actually redeemed.
 - The three lines before Promotion Coupons general section.
 - The one line before the first Promotion Coupon.
 - The one line after PURCHASES TO DATE if the POS Workstation Settings "Enable You Saved on Receipt" and "Disable Frq Shp # on Receipt" are set to "Yes".
 - One line before number of items.
 - One line before transaction discount.
- If the receipt header is blank, first three lines are no longer included.

- In order to facilitate both the suppression of printing any of the first three Receipt Header lines and to retain the retailer's ability to impose blank lines (if desired), the following logic has been implemented on all 10 of the Receipt Header lines.
 - All ten Receipt Header lines are examined to find the most populated.
 - All Receipt Header lines are printed up until the most populated (even if blank).
 - Example: If all the Receipt Header lines are blank (or space filled) except for lines 2, 4 and 7, lines 1 through 7 are printed whether blank or not.
- The Promotion Coupon printing routine has changed so that each coupon no longer prints a trailing dividing line of dashes. (The preceding line of dashes was preserved).

LaneHawk Support for Dynakey Operator Displays

In this release ScanMaster supports the LaneHawk Interface on POS Workstations with Dynakey Operator Displays.

Note:

Support for the LaneHawk Interface was introduced in ScanMaster 2.07.00-050. LaneHawk is a solution from Evolution Robotics that uses digital video cameras and software to identify “when” and “what” items are on the bottom of a customer’s cart. Using “visual pattern recognition” for object recognition, LaneHawk automatically detects and identifies “below the basket” (a.k.a. “BOB”) items.

The ScanMaster LaneHawk interface is an optionally licensed module (controlled by the HASP hardware key) and requires the purchase and installation of additional hardware and software from a third-party vendor. Please contact StoreNext for additional information.

When a ScanMaster transaction is totaled with LaneHawk items and the LaneHawk interface window has been granted focus, the following Dynakey buttons (only) are enabled:

Clear – Used to clear the highlighted item from the LaneHawk items list. (The item will not be added to the ScanMaster transaction and is removed from the LaneHawk items list. This button is used when the item already has been added to the ticket, when the wrong item was detected or when the item will be added later).

Enter – Used to add the highlighted item to the ScanMaster transaction (without removing them from beneath the cart). The item will be removed from the LaneHawk items list.

Note:

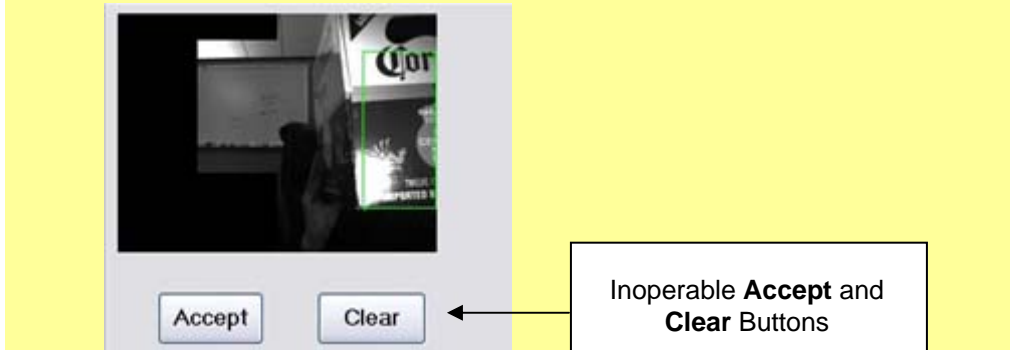
An item can also be added to the ScanMaster transaction by scanning the UPC code. Once LaneHawk items have been resolved and the list is empty, the LaneHawk interface application will return focus to ScanMaster. If the POS Workstation Setting “Retotal on LaneHawk Added Item” is set to “No”, the POS will proceed to Tender Mode when the interface window is closed. If the POS Workstation Setting is “Yes”, ScanMaster will return to Item Entry mode.

Up Arrow – Used to move up one item on the LaneHawk items list.

Down Arrow – Used to move down one item on the LaneHawk items list.

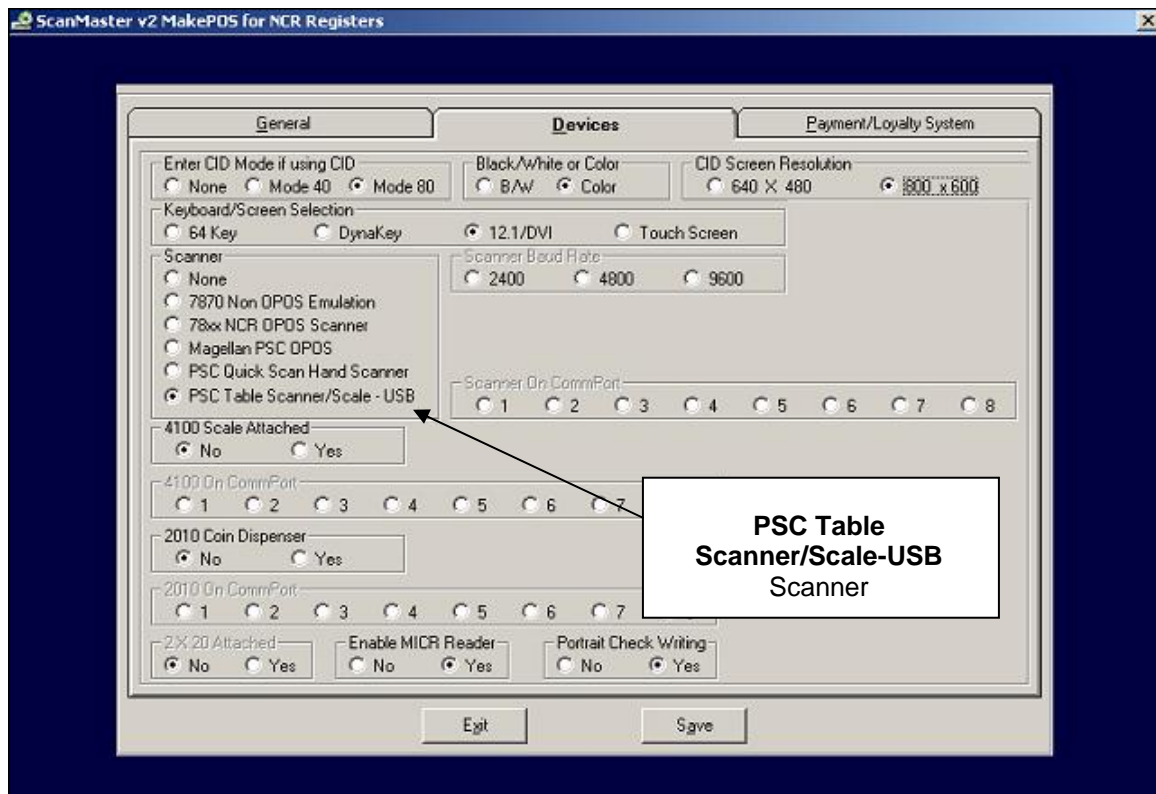
Note:

The **Accept** and **Clear** buttons appear on the LaneHawk interface window but are inoperable (since the Dynakey interface with ScanMaster does not support touch).



Other Enhancements

- ScanMaster's interface to self-checkout terminals supports Databar Coupons in this release. Databar Coupons are now included in the acceptable scan codes the POS receives from a self-checkout terminal.
- The MakePOS window that appears during the ScanMaster installation of NCR Hardware now includes an option for the PSC / Magellan / Datalogic Table Scanner / Scale (as a USB device). The **PSC Table Scanner/Scale-USB Scanner** radio button appears for selection on the Devices Tab (under the Scanner section).



Technical Reference Appendix

Release Database Changes

The following new tables have been added in ScanMaster 2.07.02-050:

GR2WICST.BTR – New State EBT WIC Table

GR2APLxx.BTR – New State APL Table (where xx is the state)

GR2CATxx.BTR – New EBT WIC Category Table (where xx is the state)

GR2WICLK.BTR – New UPC/PLU to APL Linking Table

Table	Field Name	Type	Length	Pad
GR2WICST.BTR	Postal Code	ALP	2	LJS
	FIPS	NUM	2	RJO
	State Name	ALP	30	RJO
	Active Flag	NUM	1	RJO
	BIN 1	NUM	6	RJO
	EBT ID	ALP	4	LJS
	PAN LEN	NUM	2	RJO
	Training Digit Position	NUM	2	RJO
	PAN Mask Start	NUM	2	RJO
	PAN Mask End	NUM	2	RJO
	Forwarder ID	NUM	11	RJO
	Reserve3	ALP	3	RJS
	Merchant ID	ALP	12	RJS
	CVB Category	NUM	2	RJO
	System type	NUM	1	RJO
	BIN 2	NUM	6	RJO
	BIN 3	NUM	6	RJO
Blank	NUM	51	OF	
GR2APLxx.BTR	UPC (POS Lookup (Link))	NUM	20	RJO
	Enabled Flag	NUM	1	RJO
	Postal Code		2	LJS
	Processed	NUM	8	RJO
	Filler	NUM	69	RJO
	Indicator	NUM	1	RJO
	APL UPC	NUM	16	RJO
	Item Description	ALP	50	LJS
Category Code	NUM	2	RJO	

Table	Field Name	Type	Length	Pad
	SubCategory Code	NUM	3	RJO
	Pack Size	NUM	5	RJO
	Quantity	NUM	5	RJO
	Benefit Unit Description	ALP	50	LJS
	Item Price	NUM	6	RJO
	Price Type	NUM	2	RJO
	Card Acceptor ID	NUM	15	RJO
	Effective Date	NUM	8	RJO
	End Date	NUM	8	RJO
	UPC Data Length	NUM	2	RJO
	Aggressive Flag	NUM	1	RJO
	Blank	NUM	50	OF
GR2CATxx.BTR	Category Code	NUM	2	RJO
	SubCategory Code	NUM	3	LJS
	Category Description	ALP	50	RJO
	SubCategory Description	ALP	50	LJS
	Unit of Measure	ALP	10	LJS
	Postal Code	NUM	2	LJS
	Processed	NUM	8	RJO
	Blank	NUM	42	RJO
GR2WICLK.BTR	Store UPC/PLU	NUM	20	RJO
	APL UPC/PLU	NUM	20	RJO
	APL CheckDigit	NUM	1	RJO
	Blank	ALP	20	LJO

Note:

At the beginning of each sale (when the POS Workstation is online), the POS checks for additions or changes in the server GR2WICST.REG, GR2APL*.REG and GR2CAT*.REG files (as compared to its local .BTR files). If there are any discrepancies in the comparison, the server .REG file will be copied to the local .BTR files so that the files will be as current as possible (for operating offline). During the time any files are being copied, the operator display will show the text, "PLEASE WAIT WHILE COPYING EWIC FILES"

Out of Scope

Limitations of new features in this release are listed below (and were not addressed in development).

Note:

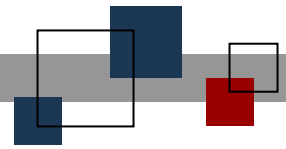
The limitations below are known as of this writing, and are provided in order to assist users and support personnel to plan, install and operate the capabilities described in this document. While StoreNext Retail Technologies LLC endeavors to ensure that this information is correct and fairly stated, no attempt is made here to catalog all limitations that could be construed or that may become known in the course of use or experience.

Enhancement	Out of Scope
Online WIC EBT Support	<p>Online WIC EBT Support is available for the current release only (and will not be made compatible with previous ScanMaster releases).</p> <p>Online WIC EBT development excluded:</p> <ol style="list-style-type: none"> 1. Support for Online WIC EBT on self-checkout terminals. 2. Support for Smart Card WIC EBT. 3. Changes to support non-MTX EFT interfaces. 4. Changes to support Least Expensive Benefit (LEB) items (a.k.a. store brands of items within the WIC program that are cheaper than standard brands). 5. Changes to the Store Reconciliation Report.
Receipt Optimization	<p>Receipt Optimization is available for the current release only (and will not be made compatible with previous ScanMaster releases).</p> <p>Receipt Optimization development excluded.</p> <ol style="list-style-type: none"> 1. Making receipt optimization optional configurable. 2. Slip printing outside than customer receipts. 3. Changes to Self Checkout receipt printing.
LaneHawk Support for Dynakey Operator Displays	<p>Changes made to support LaneHawk on Dynakey Operator Displays were made for the current release only (and will not be made to previous ScanMaster releases).</p>

Dependencies

Dependencies to utilize new features in this release are listed below.

Enhancement	Dependencies
<p>Online WIC EBT Support</p>	<ol style="list-style-type: none"> 1. Connected Payment Interface with MTX OpenEPS payment system version V826.1 (with latest patches installed). 2. The Retailer is responsible for acquiring the current Approved Product List and other files from the state and placing them in the correct import directory. 3. It is the responsibility of the store to edit the Store Reconciliation Report to reflect that Food Stamps is now EBT WIC, EFS is now EBT FS and EBT is now EBT Cash. 4. It is the responsibility to the store to handle the reconciliation and error files. (The reconciliation and error files remain on the state server until deleted by the retailer). 5. Delayed (buffered) Receipt Printing is required. 6. Stores currently using the 2nd EFS tender must move to using a User Defined Tender (since 2nd EFS previously reported as paper Food Stamp tender media).
<p>LaneHawk Support for DynaKey Operator Displays</p>	<ol style="list-style-type: none"> 1. An updated version of the LaneHawk interface (that allows for the sending of keystrokes from the POS application to control the existing touch functions of the LaneHawk GUI).



© StoreNext Retail Technologies LLC 2011

StoreNext Retail Technologies LLC endeavors to ensure that the information in this document is correct and fairly stated but does not accept liability for any error or omission.

The development of StoreNext products and services is continuous and published information may not be up to date. It is important to check the current position with StoreNext. This document is not part of a contract or license save insofar as may be expressly agreed.