

A horizontal grey bar with several overlapping squares in red, dark blue, and white, some with black outlines, positioned at the top left of the page.

ScanMaster

■ *Release Notes and What's New*

ScanMaster 2.8.0-050

ScanMaster V2 Release Notes and What's New

Previous issues 2005-2007: 89000197 (2.1.2 Release); 89000275 (2.3.0 Release); 89000304 (2.3.1 Release Prelim); 89000317 (2.3.1 Release Final); 89000339 (2.4.0 Release); 89000376 (2.4.1 Release); 89000381 (2.4.2 Release); 89000411 (2.5.0 Release); 89000423 (2.5.1 Release); 89000454 (2.5.2 Release (Updated)); 89000491 (2.6.0 Release)

Date of Issue	Product ID Number	Part Number	Brief Description
September 2009	45001/082	89000531	2.6.1 Release
February 2010	45001/082	89000551	2.7.0 Release
March 2010	45001/082	89000560	2.6.1-080 Release
May 2010	45001/082	89000565	2.7.0-100 Release
June 2010	45001/082	89000571	2.7.0-110 Release
July 2010	45001/082	89000577	2.7.1 Release
August 2010	45001/082	89000588	2.7.0-130 Release
September 2010	45001/082	89000589	2.7.1-060 Release
February 2011	45001/082	89000612	2.7.2-050 Release
May 2011	45001/082	89000640	2.7.2-060 Release
September 2011	45001/082	89000680	2.7.2-080 Release
January 2012	45001/082	89000713	2.8.0-050 Release

**© Copyright StoreNext Retail Technologies LLC 1995-2012
All rights reserved**

This publication is protected by federal copyright law. This document and its contents are the proprietary, confidential information and property of StoreNext. Unauthorized disclosure, reproduction, distribution or use of this document and/or its contents in any form is strictly prohibited. No part of this publication may be reproduced or transmitted into any human or computer language in any form or by any means, stored in a retrieval system, transmitted, redistributed, translated or disclosed to third parties, or de-compiled in any way including, but not limited to, photocopy, photograph, electronic, mechanical, magnetic or manual without the express written permission of StoreNext Retail Technologies LLC or its licensors, if any. This document, notwithstanding the above, may be distributed in electronic or printed form to personnel who are employed by either (1) a StoreNext customer of the subject system of this document or (2) personnel from an authorized StoreNext dealer of the subject system of this document. All copies, so distributed and/or so authorized, shall contain a full copy of this copyright notice.

StoreNext Retail Technologies LLC has prepared this manual for use by users, authorized third parties and personnel of StoreNext Retail Technologies LLC as a guide to the proper installation, operation, customization and/or maintenance of StoreNext Retail Technologies LLC equipment and software. The drawings and specifications contained herein are the property of StoreNext Retail Technologies LLC and/or its licensors.

StoreNext Retail Technologies LLC endeavors to ensure that the information in this document is correct and fairly stated but does not accept liability for any error or omission. StoreNext Retail Technologies LLC makes no representation or warranties with respect to the contents hereof, and specifically disclaims any implied warranties of merchantability or fitness for a particular purpose or non-infringement. No commitments by StoreNext or its suppliers are made from this documentation which is provided for information only.

Development of StoreNext products and documentation is continuous: StoreNext Retail Technologies LLC reserves the right to revise this publication and to make changes from time to time in the contents hereof or in the products herein described or discussed without notice and without any obligation of StoreNext Retail Technologies LLC to notify any person or organization of such revision or changes. Information published in this document will likely become obsolete over time and it is recommended that users regularly check for updates and newer versions.

The trademarks StoreNext and Retailix are registered trademarks or trademarks of Retailix; all other trademarks or registered trademarks are the property of their respective owners. Third-party products, services, or company names referenced in this document may be trademarked or copyrighted by their respective owners, and are for identification purposes only.

Copyrights, trademarks and license agreements shall be governed and construed in accordance with the laws of the State of Texas and the Federal Arbitration Act, and shall benefit Retailix, its successors, and assigns.

Address comments and corrections to:

StoreNext Retail Technologies LLC
Software Program Director
797 Commonwealth Drive
Warrendale, PA 15086

Table of Contents

Table of Contents	i
Introduction	1
New Media Configurator for the Front Office	2
Electronic Check Conversion (ECC) Enhancements	5
Expanded Elements for Bundle Promotions	12
New Check Decline Slip Printing	14
Manual Account Number Entry Prevention	15
Cashier Messaging Enhancement	16
Post WIC Pre-Authorization Swipe Prevention	18
Phone Number PIN Pad Entry	19
Driver License Scanning Support	20
IBM Touch w/32 Key Keypad Support	21
Magazine Tracking Support	24
New Pre-Stage for Enhanced Price Management	26
Diners Club Reporting Change	27
LaneHawk Support for 92U Keyboards	28
Optional Quantity Key Restriction for “@ a Price” Promotions	29
Automated Reconciliation and Final Deposit Process	30
Other Modifications	32
Technical Reference Appendix	33
Database Changes	33

Out of Scope	33
Dependencies	36

Introduction

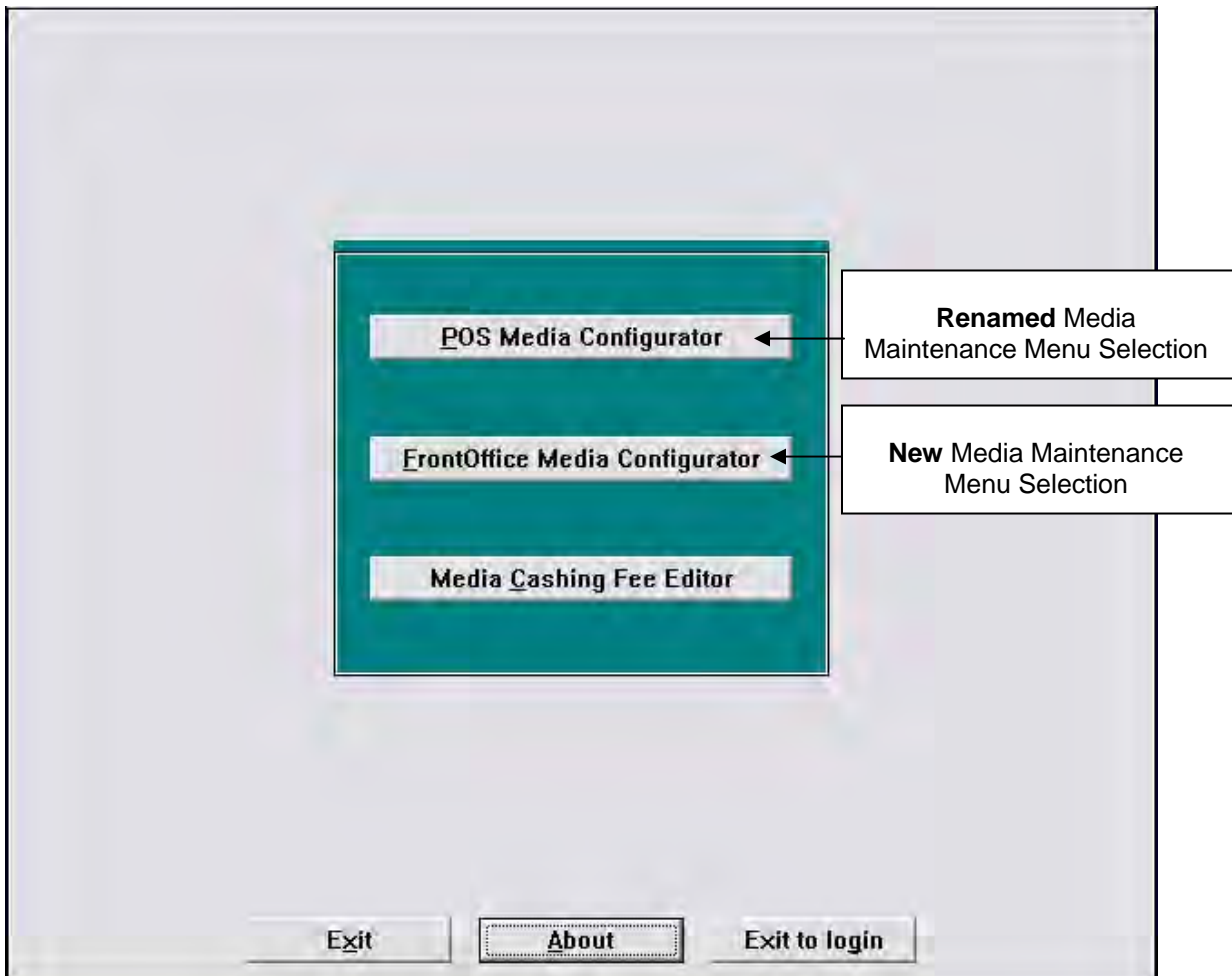
New features were made recently to the ScanMaster system as a result of customer change requests. These changes are reflected in the accompanying 2.08.00-050 software.

These enhancements are explained in detail in the following pages and are included in your ScanMaster 2.08 User and Installation Guides.

New Media Configurator for the Front Office

In previous ScanMaster releases, the media configuration for a POS Workstation (specifically the last one modified) was also used for Front Office media pickup, loan and settlement purposes. Since media configurations for Front Office purposes may not necessarily follow that of a POS Workstation (and because media configurations for POS Workstations may differ between each other), a new Front Office Media Configurator has been added in this release.

The Media Maintenance Menu displays with a new menu option: FrontOffice Media Configurator. The existing Media Configurator menu option has been renamed to the “POS Media Configurator”.



When selected, the new FrontOffice Media Configurator screen displays with media selections similarly to the POS Media Configurator but without the register number selection list. Other notable differences are:

- Combined Gift Cert/Gift Card media (in position 11)
- ECC media (in position 4)
- No Tender Credit media

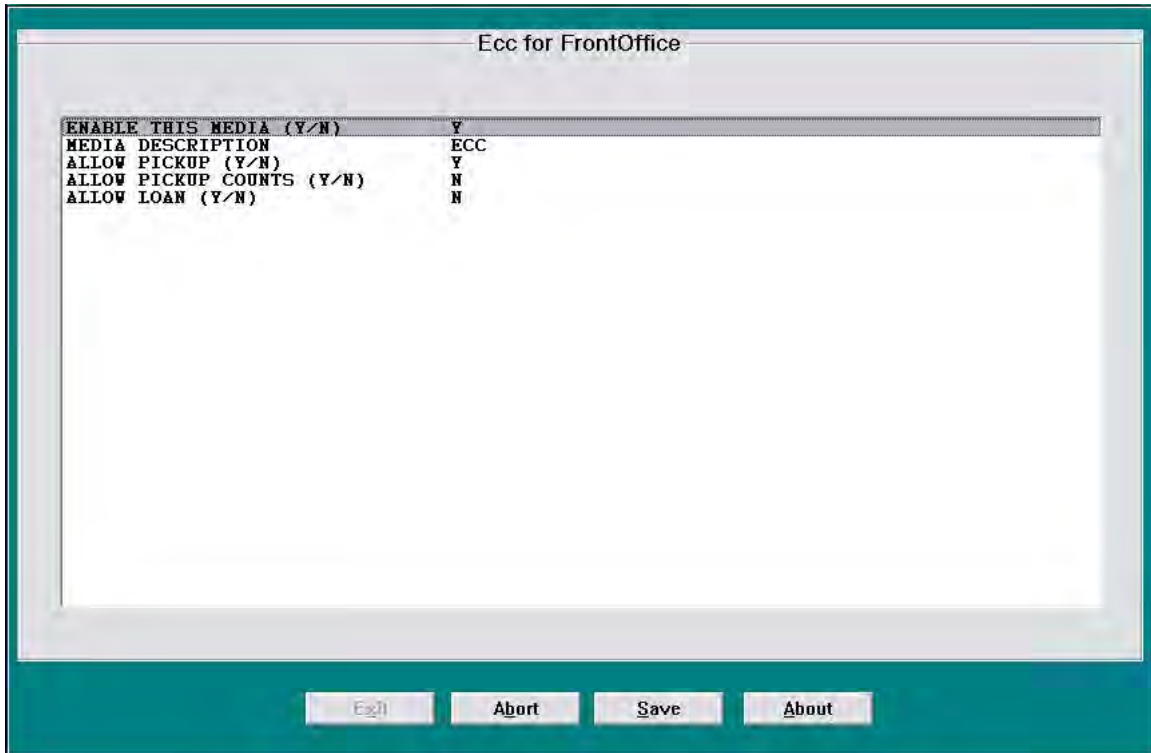


Note:

Previously if Gift Cards were enabled in the Media Configurator but Gift Certificates were not, Gift Card media could not be edited within Office Procedures.

When a Front Office media is selected, the following options are available:

- Enable This Media (Y/N)
- Media Description
- Allow Pickup (Y/N)
- Allow Pickup Counts (Y/N) – for all media except Cash
- Allow Loan (Y/N)

**Note:**

A new message displays when a media is changed in the POS Media Configurator to remind the user to make the change in the Front Office Media Configurator (if needed).

Note:

The new program that executes the FrontOffice Media Configurator is SM2MediaB.exe and the program writes to the <LAN Drive:>\Grocery\Mediacfg.bof file.

Electronic Check Conversion (ECC) Enhancements

Coinciding with the evolution of electronic check processing, enhancements in this release help bring check tendering and reporting more in line with current store practices.

In previous releases, ScanMaster Tender #2 (Checks) represented both Non-EFT (i.e. "Paper") checks and ECA (Electronic Check Authorization) checks while ScanMaster Tender #4 (ACH) represented both ECC (Electronic Check Conversion) checks and ACH (Automated Clearing House) checks. However, stores have been turning off the electronic features of the antiquated ACH tender in order to accept checks that are declined through normal check tendering.

In this release, only electronically converted checks will report totals to Tender #4. Checks that are not electronically converted will report totals to Tender #2.

Note:

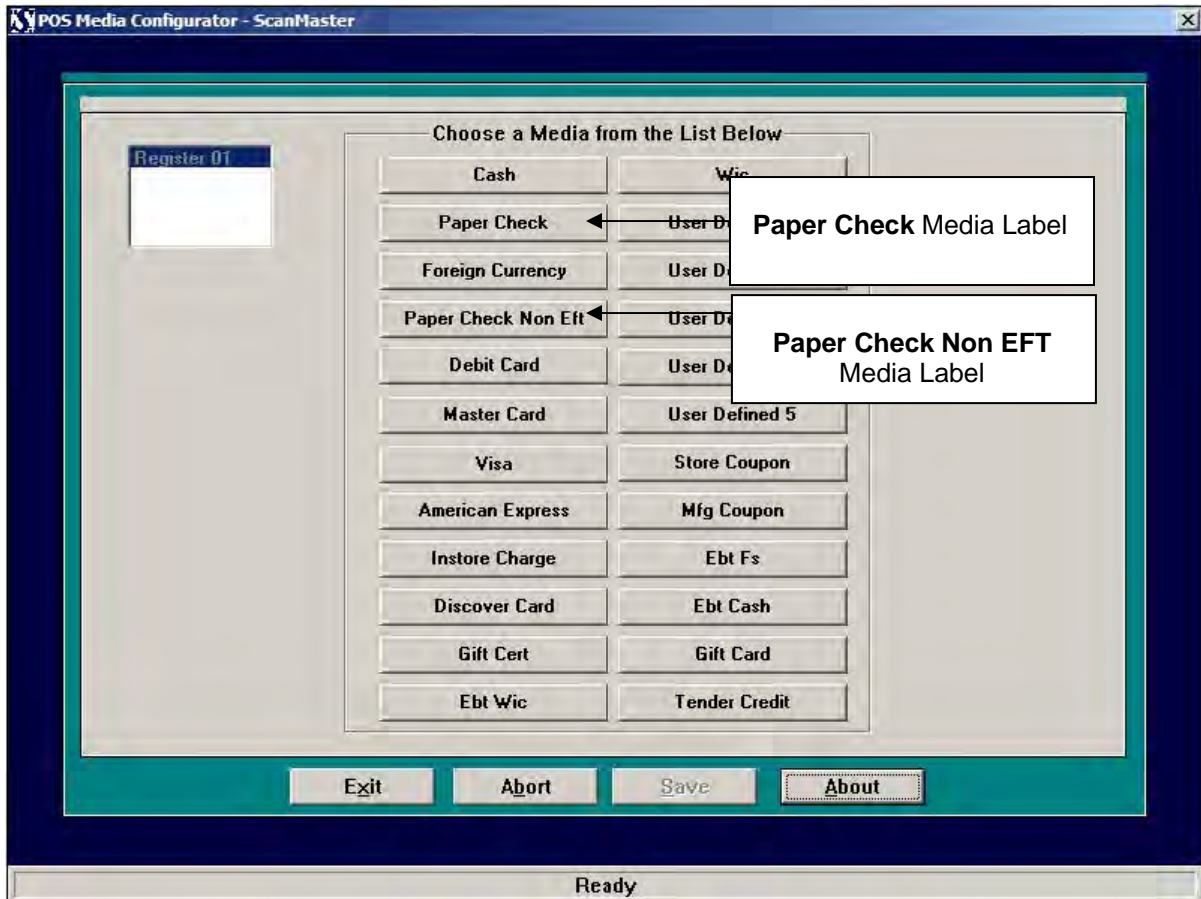
Paper checks that are configured for electronic processing may receive one of two types of approvals: ECA (Electronic Check Authorization – Bank approves check customer as good and paper check is retained by the store) or ECC (Electronic Check Conversion – Bank converts paper check into EFT and check is given back to customer).

The following table illustrates how Paper, Payroll/Government and Electronic checks are now displayed (on the POS), configured and reported in this release.

Old POS Option Label	New POS Option Label	Label Configurable?	Tender Configured by:	Reports to Front Office Tender Number:
Paper	Paper Check - EFT	Yes (Through MEDIACFG.DAT #2)	POS Media Configurator #2 (Paper Check)	#2 (Check) if non-EFT #2 (Check) if processed ECA #4 (ECC) if processed ECC
Payroll/Gov't	Payroll / Gov't - EFT	Yes (after enabled by POS Workstation Setting "Payroll/Govt EFT (Y/N)")	POS Media Configurator #2 (Paper Check)	#2 (Check) if non-EFT #2 (Check) if processed ECA #4 (ECC) if processed ECC
Electronic	Paper Check - Non EFT	No (hard-coded)	POS Media Configurator #4 (Paper Check – Non EFT) <u>And:</u> POS Workstation Setting "Check File (1=Neg 2=POS 0=none)"	#2 (Check)

POS Media Configurator Change

The POS Media Configurator Screen has relabeled two media selections in this release. “Paper Check” has replaced “Check” and “Paper Check Non EFT” has replaced “ACH”:

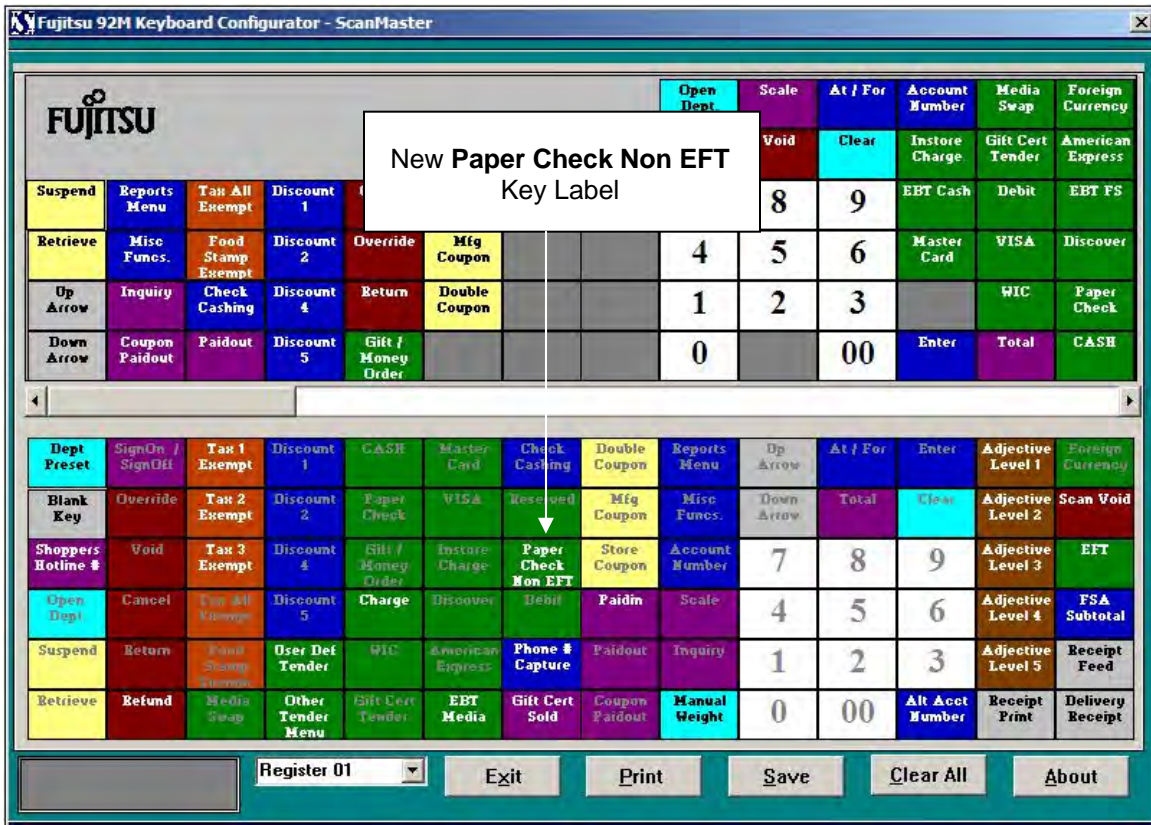


Note:

The ScanMaster upgrade to 2.08.00-050 changes the media description (as shown above) if Media #2 was previously “Check” and Media #4 was previously “ACH”. If descriptions for these media selections were modified previously on site, the upgrade will not change them.

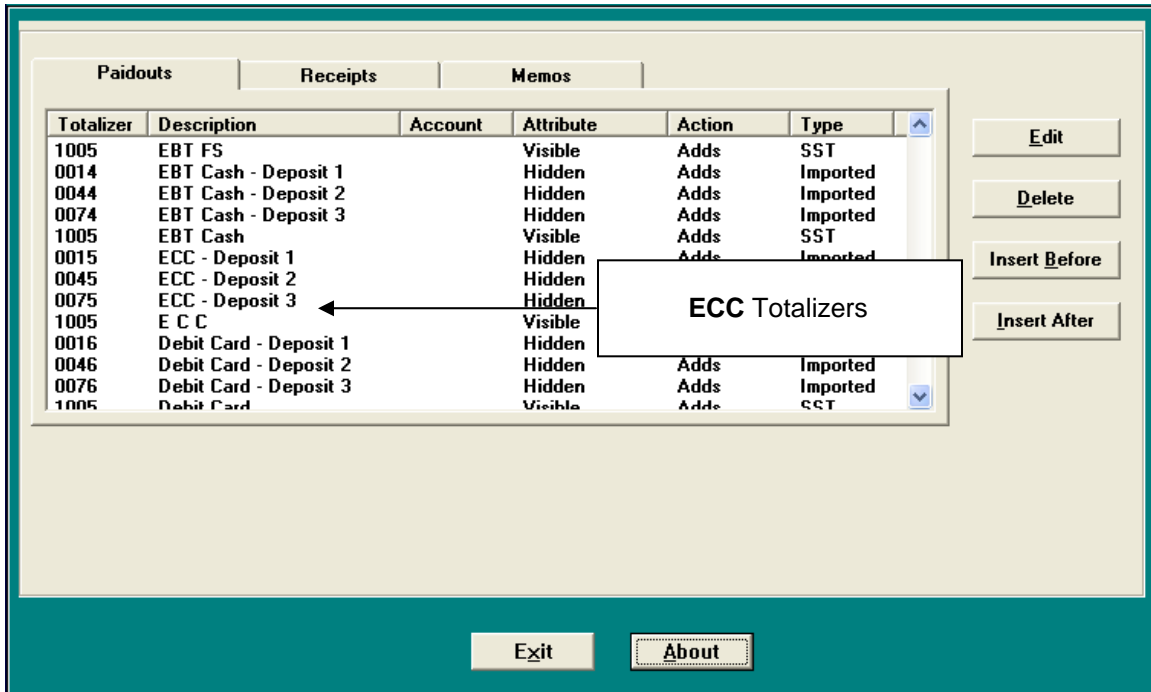
Keyboard Configurator Changes

The Keyboard Configuration Screens for the Fujitsu 92M Key, IBM 50 Key, NCR Falcon and NCR 7450 now display a “Non-EFT Check” key in lieu of the “Elec. Check” key.



SRR Editor Changes

For new installs, "ECC" replaces "ACH" in the SRR Editor.



For stores that are upgrading to ScanMaster 2.08, the store must change the description from “ACH” to “ECC” in the POMAP file (located in the <LAN Drive>:\Grocery\SRR folder.

Note:

Viewing historical data through ScanMaster (like the ScanMaster Reconciliation Report) may be misleading based on these ECC enhancements.

Modified POS Workstation Setting

To support ECC changes, an existing POS Workstation Setting has been modified in the System Configuration Editor.

Note:

The tab where the setting is located within the ScanMaster System Configuration Editor is listed in brackets.

Previous Setting

Use Electronic Check [Media]

New Setting

Use Paper Check Non-EFT Check [Media]

This field requires a Yes or No. If set to “Yes”, the tendering option of “PAPER CHECK-NON EFT” will be enabled on the POS Workstation (appearing under the Check tendering menu on Dynakey, Touch-Key and

Expanded Elements for Bundle Promotions

In this release the number of elements allowed in a promotion bundle has expanded from 5 to 20. As part of this enhancement, a new bundle type of "Promo Code" has been added to include Promotion Codes. Similar to Mix/Match Codes, items that are attached to the entered Promotion Code will be included in the bundle.

Note:

Items are attached to Promotion Code Electronic Coupons through the Enhanced Tab in ScanMaster Item Maintenance.

The Bundle File Maintenance screen now appears with a scroll bar to access the additional input rows:

The screenshot displays the Bundle File Maintenance interface. At the top, there are fields for 'Bundle Code' (01) and 'Number of Items in this Bundle = 4'. Below this is the 'Bundle Description' field containing 'TEST'. The main area is a list of items, each with a dropdown menu for selection and a corresponding description. The items listed are:

Item Type	Value	Description
UPC	00000000000000000001	CABBAGE
MIX/MATCH	0001	3 FOR 1.00
REPORT CODE	0001	TEST
PROMO CODE	00000000000000000001	PCODE #00000000000000000001
UPC	00000000000000000000	
UPC	00000000000000000000	
UPC		
UPC		
UPC		
UPC	00000000000000000000	
UPC	00000000000000000000	

Callouts in the image point to a 'New Promo Code Bundle Type' label and a 'Scrollbar' on the right side of the list. At the bottom of the screen, there are buttons for 'Exit', 'Save', 'Previous', 'Next', 'Delete', 'Print List', and 'About'.

Note:

Bundle Promotions allow retailers to reward customers with free or discounted items when a group of associated products are purchased. The first line of the Bundle UPC information section is reserved for the free or discounted item, while the remaining lines are used for the items that must be purchased in order to receive the free item or discounted item. If a UPC is used in the bundle, that particular UPC must be purchased for the customer to qualify. If Mix and Match, Report Code or Promotion Code is selected, the customer must buy one of the items in those groupings to get the free or discounted item.

Note:

A Bundle Number may also be referenced to trigger an Electronic Coupon, which acts as a discount against the first item listed in Bundle File Maintenance. For “@ a price” type Electronic Coupons, the entire bundle of items is considered so that the customer gets the entire bundle at that price (not just the first item).

New Check Decline Slip Printing

In sites using MTXEPS OpenEPS, a new POS Workstation Setting in this release allows retailers to print decline slips for both paper and ECC checks. In previous releases, the POS only printed decline slips for Electronic Food Stamp (EFS), Electronic Benefit Transfer (EBT) and Gift Card tenders (using OpenEPS delivered text).

Note:

To print decline slips, OpenEPS tenders must include TAC “Z – Print Decline Slip” as the last TAC in the tender sequence.

To add decline slip printing for paper and ECC checks, an existing POS Workstation Setting has been modified in the System Configuration Editor.

Note:

The tab where the setting is located within the ScanMaster System Configuration Editor is listed in brackets.

Previous Setting

Default OpenEPS Sig Slips [EFT]

New Setting

Default OpenEPS Sig/Dcln Slips [EFT]

This field requires a Yes or No. If set to “Yes”, the POS will seek slip information (signature or decline slips) from MTXEPS and, if available, use that text to comprise the document. If information is not available from MTXEPS, the POS will revert to the hard-coded text. If set to “No” (default), OpenEPS text will not be used signature or decline slips.

New POS Workstation Setting

To support decline slip printing, the following new POS Workstation Setting is now found in the System Configuration Editor.

Print Check/ECC Decline Slips [EFT]

This field requires a Yes or No. If set to “Yes”, the POS will print a decline slip in the event of a declined check or declined ECC transaction. If set to “No” (default), decline slips will not print.

Manual Account Number Entry Prevention

For Payment Card Industry (PCI) compliance, the POS Workstation no longer permits account numbers to be manually entered at the POS for Credit and Debit Card tenders. Correspondingly, the POS Media Configurator Setting “Allow Manual Account Entry” no longer appears for the following media in this release:

- Debit Card
- Master Card
- Visa
- American Express
- Discover Card

Note:

MTXEPS provides the alternative to allow the manual entry of the account number at the payment terminal. This keeps the unmasked account number information outside of the ScanMaster application and eliminates related PCI compliancy certification requirements.

In sites using MTXEPS OpenEPS, if the Debit or Credit Card has three bad swipes, the POS now displays the “CARD READ ERROR!” and aborts the tender. Also, if the cashier presses the CLEAR key before a Credit or Debit Card tender is swiped and processed, the tender aborts without displaying any error messages.

In sites not using the MTXEPS OpenEPS, the message “MANUAL ENTRY NOT ALLOWED” now appears on the POS Workstation to disallow account number entry (when the POS Workstation is configured to capture the account number).

Note:

In these situations the POS Workstation Settings “Disable Bank Chrg Acct Capture” (Media Tab) and “Enable Electronic Payment Sys” (EFT Tab) are set to “Yes” and “No” (respectively).

Cashier Messaging Enhancement

ScanMaster's Cashier Messaging has been enhanced in this release with options to display a message at the end of a ticket. The trigger for these new options is the sale of an item (or department). For example, this feature could be used to remind the cashier to give the customer a book of stamps from the cashier drawer after the sale. (The cashier must acknowledge the message before the customer receipt prints.)

The Cashier/Lane Messaging Screen now displays a new "End of Sale" button. The button is enabled for Message Types of "Operator Display" and disabled for Message Types of "Printed Receipt".

The screenshot displays the Cashier/Lane Messaging Screen. The interface is divided into several sections:

- Message Type:** Radio buttons for "Operator Display" (selected) and "Printed Receipt".
- Message Schedule:** Radio buttons for "Deliver Immediately", "Deliver Beginning of Next Transaction", "Deliver at Next Sign On", "Deliver at Next Sign Off", and "UPC" (selected). The "UPC" section includes a text box for the UPC number (00000000000000000001) and a text box for the item name (CABBAGE).
- Repeat within Recurring:** Radio buttons for "Yes" and "No" (selected).
- Message Recipient:** Radio buttons for "Cashiers" (selected) and "Lanes". A list of cashiers is shown: 001 - <not active> - CASHIER 1, 111 - <not active> - DAVE AMBROSE, 300 - <not active> - HEAD CASHIER. Buttons for "All Cashiers" and "None" are at the bottom.
- Operator Display Message:** A dropdown menu for "Use Pre-defined Message:" showing "<No predefined message selected>" and an "Edit Predefined Messages..." button.
- Buttons:** "Clear Message", "Send Message", "Exit", "Review Pending", and "About" are located at the bottom of the screen.

A callout box labeled "New End of Sale Radio Button" points to the "End of Sale" radio button in the "Repeat within Recurring" section.

Note:

A retailer can have a message display when either a designated item (or department) is sold or at the end the sale where the item (or department) is sold, but not both.

Note:

An item or department Operator Display Message will appear at the end of sale once only, regardless how many times the item or Department has been sold in the sale.

Note:

When the "Recurring" button is set to "No", the "Yes" radio button option under "Repeat Within" is disabled. If the "Repeat Within" radio button was previously set to "Yes", the button will be changed to "No" when the "Recurring" button is set to "No".

Note:

The "End of Sale" radio button is written to the Operator Display Message file (GRCDISP.xxx where xxx is the POS Workstation) with a value of "2" in Record 1, Column 22. By placing a "1" in position 23, retailers have the option of opening the cash drawer when the "End of Sale" message is displayed. (Even if the bit is set, the drawer will not open in Training Mode or it will be skipped if the drawer is already open).

Post WIC Pre-Authorization Swipe Prevention

PIN Pad logic has been changed in this release to prevent a payment terminal from returning to a swipe card state after an Online WIC EBT pre-authorization. The PIN Pad is now only reset (to allow the next tender card swipe) until after the cashier selects whether to apply benefits.

Note:

This change also prevents the chance that a card could be swiped at an incorrect time when the system is configured to have the customer choose at the PIN Pad whether to apply benefits. A card swipe after the Online WIC EBT pre-authorization (and before the customer is presented with the question to apply benefits) could cause a tender mismatch error once the selection to apply benefits is made.

Phone Number PIN Pad Entry

A new POS Workstation Setting in this release will allow the customer to enter their Alternate ID (i.e. Phone Number) at the PIN Pad for inserting a Customer Number into the transaction. In previous releases, this function could only be performed by the cashier (on the POS Workstation).

If no data is returned from the PIN Pad (because the customer has canceled or cleared the prompt), the POS Workstation will prompt the cashier for the phone number.

Note:

This feature is only available in sites running MTXEPS OpenEPS version 825.0 or later.

New POS Workstation Setting

To support entering phone numbers at the PIN Pad, the following new POS Workstation Setting is found in the System Configuration Editor.

Cust Enter Phone # at PIN Pad [Promotions]

This field requires a Yes or No. If set to "Yes", the POS will attempt to receive Phone Number data from MTXEPS as entered by the customer on the PIN Pad. If set to "No" (default), Phone Number entry can only be performed at the POS Workstation.

Note:

The POS Workstation setting "Enable Phone # Lookup" (Promotions Tab) must also be set to "Yes" to use this feature.

Driver License Scanning Support

A customer's birth date can now be read from the driver's license 2D barcode and inserted into a ScanMaster transaction. The date is used for age verification on age restricted items and eliminates the need for the cashier to manually enter the customer birth date.

When enabled, ScanMaster parses out the Expiration Date, Birth Date, License Number and State Code fields from the barcode (read from a capable scanner). Expired Drivers Licenses are not considered valid when verifying the customer's age, prompting the "ID EXPIRED!" message on the POS Workstation. If the customer is underage, the "CUSTOMER AGE RESTRICTION!" message displays.

Note:

Licenses must be from states that use the common, unencrypted PDF417 barcode format. If a state follows the standard but omits the State Code (e.g. IL, MN), the POS Workstation will prompt for a State Code after the scan. If the expiration date is missing, the processing of the license will still continue. If the data cannot be parsed, the "UNSUPPORTED ID FORMAT!" message displays. If a driver's license is scanned during item entry, the scan will be rejected by the POS with the error, "INVALID ITEM!".

New POS Workstation Setting

To support the scanning of Driver Licenses, the following new POS Workstation Setting is found in the System Configuration Editor.

Scan DL# for Restrictions [Items]

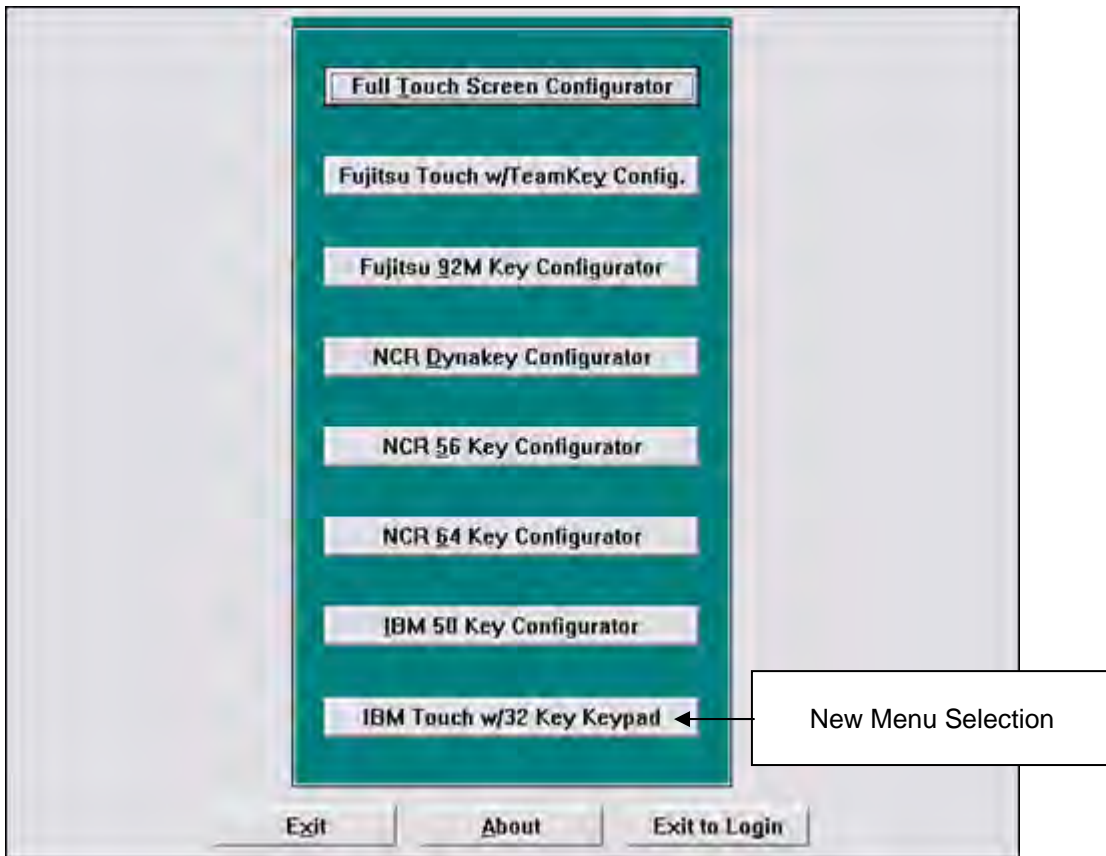
This field requires a Yes or No. If set to "Yes", a prompt "SCAN DRIVERS LICENSE" will be generated when a restricted item is scanned (allowing the acceptance of 2D PDF417 barcode information). If set to "No" (default), drivers licensing scanning will not function.

Note:

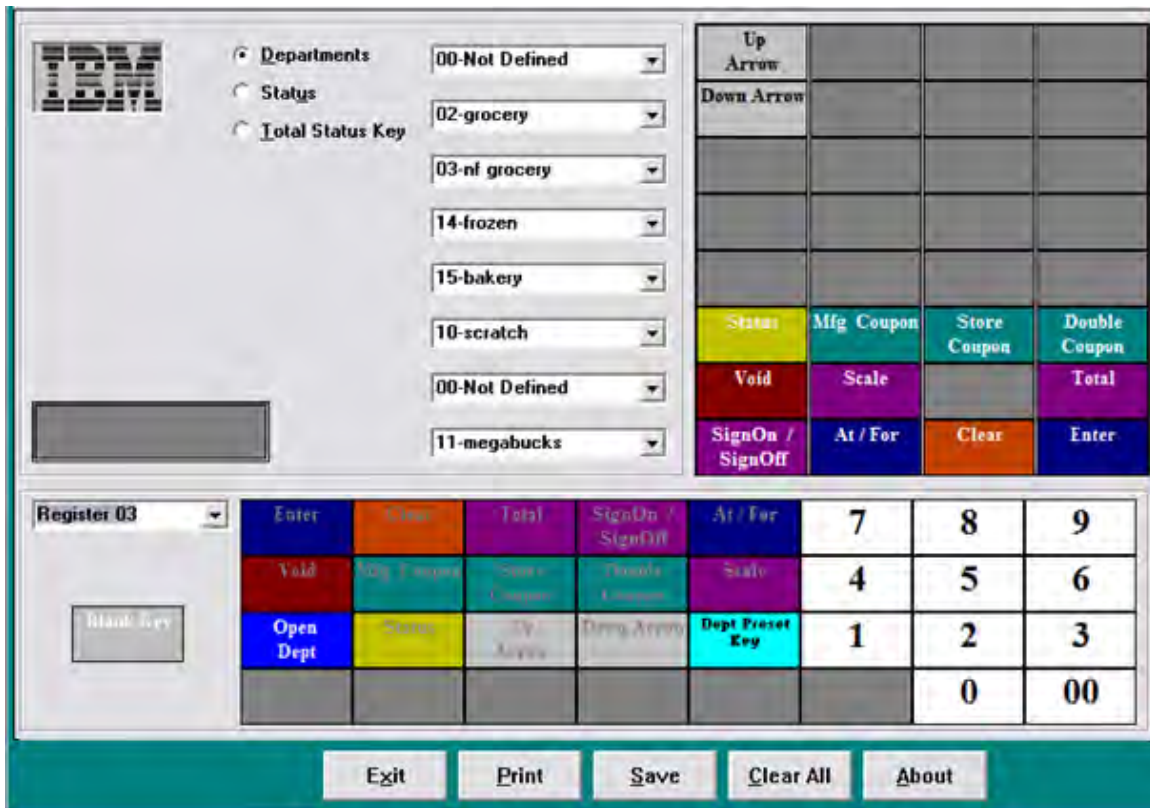
Manual entry of driver licenses will still be allowed if the POS Workstation Setting "Scan DL# for Restrictions" is set to "Yes". The state will be prompted for first (using a flipchart), then the drivers license number will be accepted (allowing for alpha entry). Alpha characters can be entered by entering Alpha Mode (by pressing the @/FOR key). Pressing the @/FOR key again will return the user to numeric entry.

IBM Touch w/32 Key Keypad Support

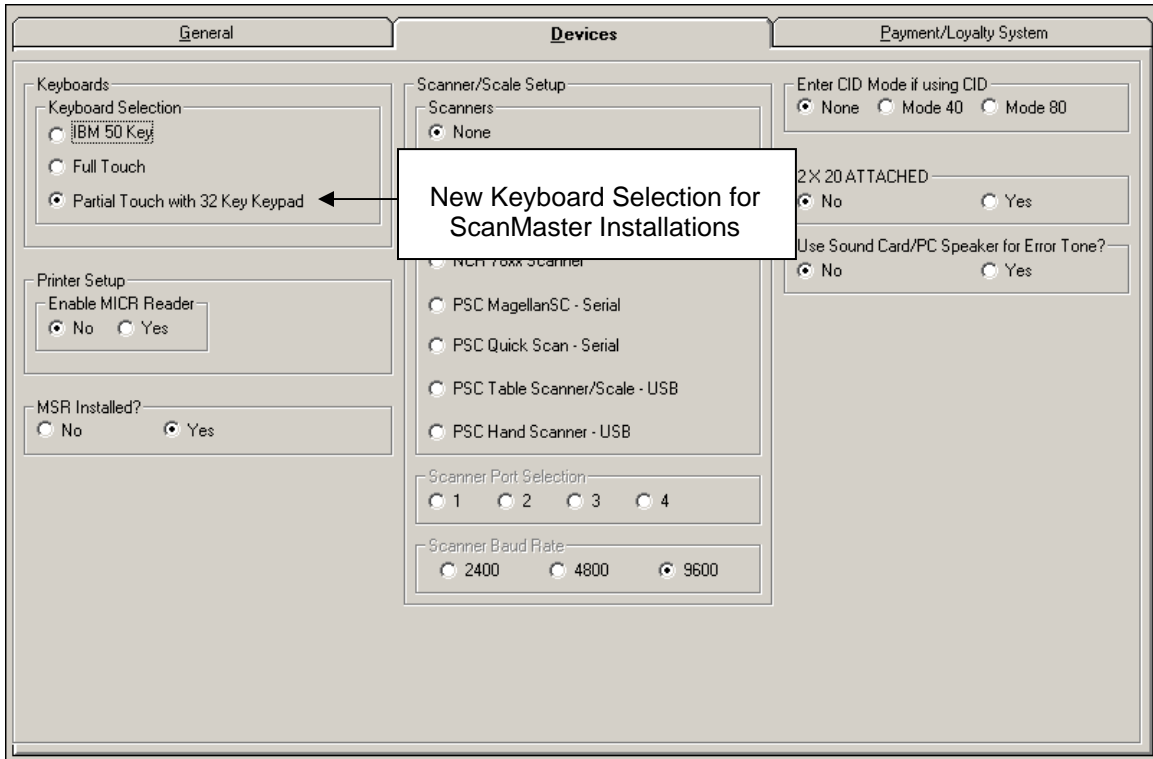
The ScanMaster POS Workstation now supports the IBM Touch 32-Key Keypad. In this release the Keyboard Configuration Screen displays with the new "IBM Touch w/32 Key Keypad" menu selection.



When selected, the IBM Configurator screen appears displaying both the Dynamic Keys (Department, Status and Total Status) and 32 Configuration Keys (4 columns and 8 rows).



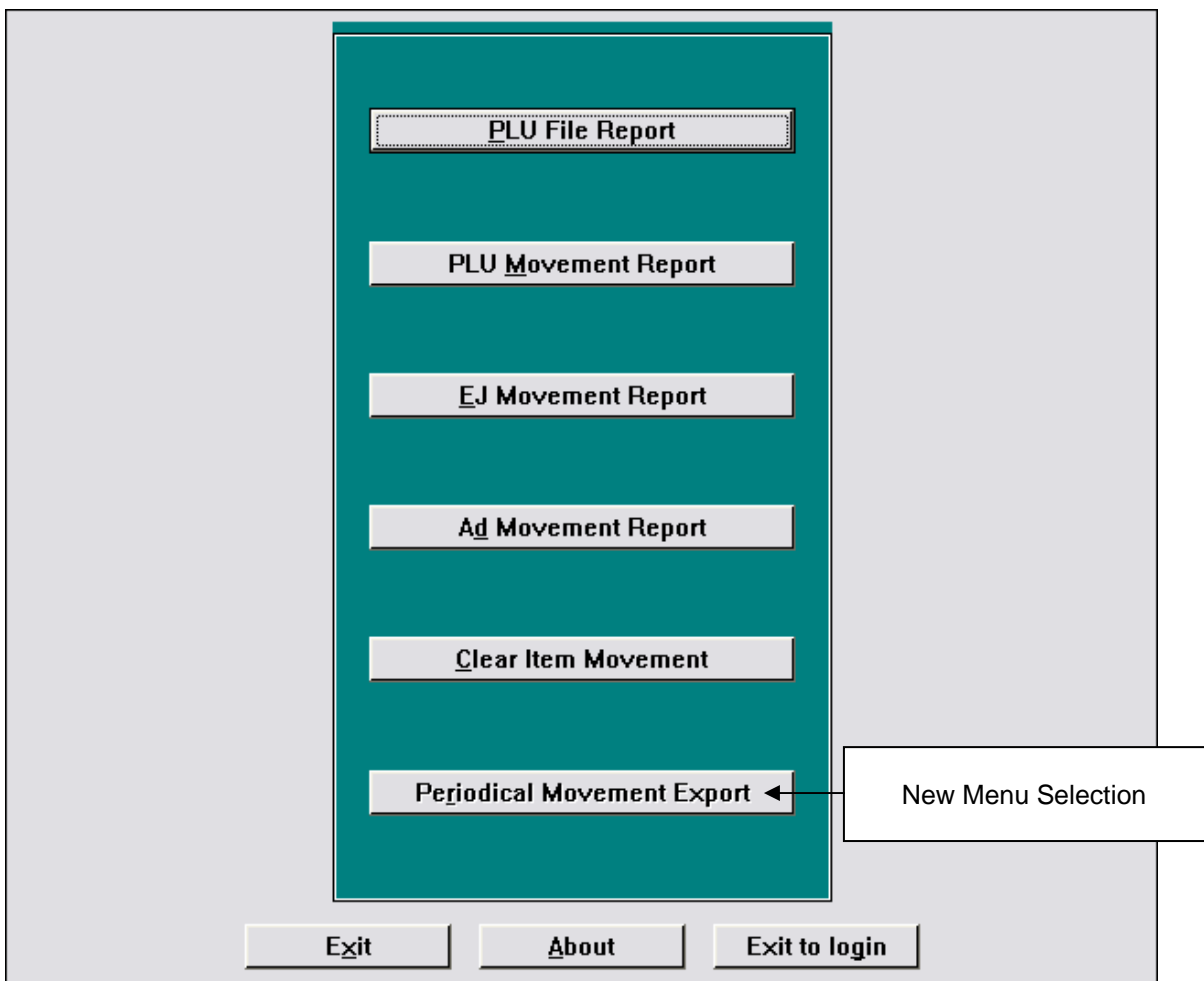
In addition, the Hardware Devices Tab that is selected during the ScanMaster install now displays the “Partial Touch with 32 Key Keypad” under Keyboards.



Magazine Tracking Support

ScanMaster now has the ability to read and capture supplemental barcode data containing the 2-digit periodical number from the scan of a magazine barcode. This data is stored in a magazine supplemental data file after being delivered to the server during end-of-day processing.

A new Periodical Movement Export button now appears on the PLU Reports menu to export captured magazine data.



When Periodical Movement Export is enabled (through a new Back Office Setting) and this option is selected, magazine data will be exported and appended to an ASCII file (that can be used for magazine delivery purposes). The name of the export file is SSSSMAG.ASC (where SSSS

is store number) and by default is placed in the <LAN Drive>:\GROCERY\HOST folder.

Note:

Another folder can be chosen by changing the folder entry into the <LAN Drive>:\GROCERY\SM2MAG.INI file.

New Back Office Setting

To support magazine tracking, the following new Back Office Settings are found in the System Configuration Editor.

Note:

Back Office Settings are changed using the fields listed under the column headed by the computer's name within the Global/Store and BackOffice Tabs.

Enable Periodical Code Mvmnt

This field requires a Yes or No. Set this field to "Yes" to enable the Periodical Movement Export feature and have the POS to capture both the magazine's UPC barcode along with the supplemental barcode containing a 2-digit periodical number.

Note:

At end of a sale, all items scanned containing the supplemental code will have an individual entry made into a new shared file on the server (F:\GROCERY\FILES\GR2MAG.BTR). Each record will contain store number, TLOG header information, UPC number and periodical number. If any magazine items are added using the Quantity key, multiple records will be written to the GR2MAG.BTR file (one for each item).

Note:

The 2-digit periodical number varies with the issue published in a given year. For example a monthly magazine typically makes use of the numbers 01 through 12 for each of the 12 months of the year. Similarly, a bi-monthly makes use of the numbers 01, 02, 03, 04, 05, 06. A special issue, such as a buyer's guide or annual can be assigned the next number in sequence. For example, "13" may be assigned for a monthly special issue or "07" for a bi-monthly special issue. A periodical number must be unique during a given year but can be repeated in subsequent years.

New Pre-Stage for Enhanced Price Management

In sites using Enhanced Price Management, a new pre-stage routine found in this release will:

- Assess all permanent, unapplied batch items (whose Start Date is equal to or less than the Activation Date).
- Write the qualifying batch items to a new Btrieve file (PRESTAGE.BTR) and sort each UPC by batch creation date.
- If duplicate UPCs are found, the item's "Applied" flag is set on the maintenance included in the oldest batches (leaving the most recent batch item maintenance as unapplied).

In previous releases, when long-running, temporary batches finally expired, prices from the oldest, permanent batch replaced an item's selling price. At next staging, the price from the next oldest, permanent batch would replace the item's selling price (and so forth). Permanent pricing would be incorrect until the most recent, qualifying permanent price change was staged and applied.

If the pre-stage routine marks all the items in the oldest, permanent batch (using the scenario above) as applied, the batch will display in black (when batches are displayed). If at least one item in the oldest, permanent batch is left unapplied, the batch will display in green.

Note:

The Back Office Setting "Use Enhanced Price Management" controls whether Enhanced Price Management is implemented. For more information, please see "Enhanced Price Management vs. Standard Batch Maintenance" in Chapter 4 of the **ScanMaster 2.08 User Guide**.

Diners Club Reporting Change

In 2008, Discover Card purchased Diners Club International. Diners Club charges are now accepted and reported as Discover Card charges in ScanMaster. In previous releases, ScanMaster accepted and reported Diners Club charges under the media settings for MasterCard.

Note:

Diners Club BIN number ranges are as follows:

- 30000000 To 30599999
- 30950000 To 30959999
- 36000000 To 36999999 (and Card Length = 14)
- 38000000 To 39999999

LaneHawk Support for 92U Keyboards

The ScanMaster interface with LaneHawk is now supported in sites using Fujitsu 92U Keyboards.

When the LaneHawk interface window has focus (after totaling the ticket), the following keys may be pressed:

Clear – Used to clear the highlighted item from the LaneHawk items list. (The item will not be added to the ScanMaster transaction and is removed from the LaneHawk items list. This button is used when the item already has been added to the ticket, when the wrong item was detected or when the item will be added later).

Enter – Used to add the highlighted item to the ScanMaster transaction (without removing them from beneath the cart). The item will be removed from the LaneHawk items list.

Note:

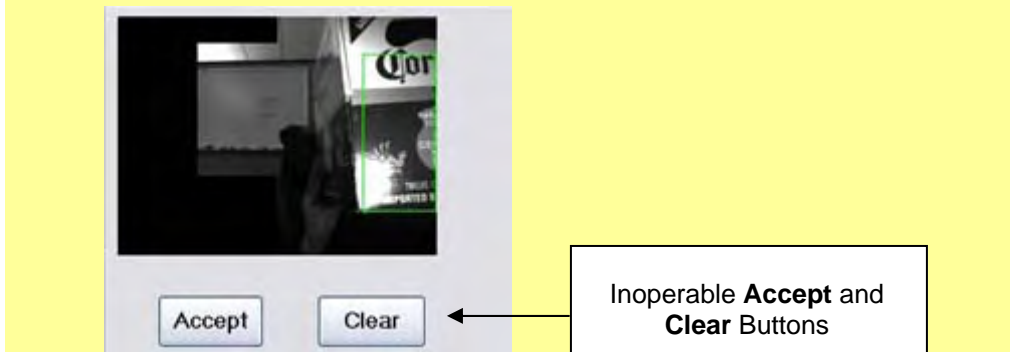
An item can also be added to the ScanMaster transaction by scanning the UPC code. Once LaneHawk items have been resolved and the list is empty, the LaneHawk interface application will return focus to ScanMaster. If the POS Workstation Setting “Retotal on LaneHawk Added Item” is set to “No”, the POS will proceed to Tender Mode when the interface window is closed. If the POS Workstation Setting is “Yes”, ScanMaster will return to Item Entry mode.

Up Arrow – Used to move up one item on the LaneHawk items list.

Down Arrow – Used to move down one item on the LaneHawk items list.

Note:

The **Accept** and **Clear** buttons will appear on the LaneHawk interface window but are inoperable.



When the LaneHawk interface no longer has focus (after “below the basket” item resolution has completed) processing continues as normal.

Optional Quantity Key Restriction for “@ a Price” Promotions

In previous ScanMaster releases, the Quantity key could not be used when selling items with “@ a price” promotions attached. A new POS Workstation Setting found in this release provides the option of removing this restriction.

The previous restriction was implemented because using the Quantity key on these items had the potential to cause erroneous promotion calculations. However, since this restriction can present a throughput problem in the lane (especially with produce items that frequently require the use of the Quantity key), a new optional setting is available in this release.

Note:

BRData® delivers many “@ a price” promotion configurations to ScanMaster.

New POS Workstation Setting

To support an optional Quantity key restriction for “@ a price” promotions, the following POS Workstation Setting is implemented in this release. (The tab where the setting is located within the ScanMaster System Configuration Editor is listed in brackets.)

No QTY Restriction on @ Promos [Promotions]

This field requires a Yes or No. When this parameter is set to “Yes”, the Quantity key can be used when selling items that have “@ a price” promotions attached. If set to “No” (default), selling items that have “@ a price” promotions attached must be sold individually.

Automated Reconciliation and Final Deposit Process

ScanMaster's end-of-day processing now has the automatic capability to both reconcile the office and deposit available funds. After the automatically settling of the tills, an automatic deposit can be made to a deposit account (based on two new Back Office settings). In previous releases, the final reconciliation could only be performed manually.

Modified Back Office Setting

To support automated reconciliation, an existing Back Office Setting has been modified in the System Configuration Editor.

Note:

Back Office Settings are changed using the fields listed under the column headed by the computer's name within the Global/Store and BackOffice Tabs.

Previous Setting

EOD: 1= AutoDelay, 2=AutoSettle

New Setting

Auto 1Delay,2Setl,3Setl/Rec/Dp

This field requires a numeric entry (0, 1, 2 or 3). If set to 0 (default), the feature is not used. If set to 1, the Auto Delay feature is enabled. If set to 2, the Automatic Settlement feature is enabled. If set to 3, the Automatic Settlement and Automatic Reconciliation/Deposit feature is enabled.

New Back Office Settings

To support automated reconciliation, the following new Back Office Settings are found in the System Configuration Editor.

Auto Deposit (0=None, 1=All)

This field requires a numeric entry (0 or 1). A setting of 0 (default) leaves the deposit totals in the Safe. A setting of 1 deposits the totals to Acct 1, 2 or 3 as determined by the Back Office Setting "Auto Deposit to Acct# (1,2,3)".

Auto Deposit to Acct# (1,2,3)

This field requires a numeric entry (1, 2 or 3). If the “Auto Deposit (0=None, 1=All)” is set to 1, this setting will determine which account receives the deposit totals 1, 2 or 3.

Note:

ScanMaster’s manual (mid-day) deposits can be made to one of three selected deposit accounts. The Back Office Setting “Num of Deposit Accounts (1-3)” determines the number of deposit accounts that may receive the safe totals.

Note:

If an EOD error occurs during the Automatic Settlement or Automatic Deposit, a message displaying information about the error will be present to the user at login (informing the user to manually run either the reconciliation or deposit programs).

Other Modifications

- The POS Workstation Setting “Print Elec Coupons After Items” (Receipt Tab) has been removed in this release (as it no longer supports any functionality).
- If the Employee File (GR2PRS.BTR) is missing (or accidentally deleted), ScanMaster now automatically copies over the GR2PRS.BTR file from the \Blank folder so ScanMaster can be temporarily accessed by default user 111. An entry is made to the error log when this occurs.
- The POS Workstation Setting “Enable 7156 Delayed Receipt” (Receipt Tab) will now be set to “Yes” from base installs (since several features in ScanMaster are enabled by delayed receipts).

Technical Reference Appendix

Database Changes

The GR2MAG.BTR file holds the magazine movement data (see page 24):

Magazine Periodic Code Movement												
Name:		GR2MAG.BTR										
Record Length:		80	Bytes	File Page Size:		2048	Bytes					
Physical Record Length:		98	Bytes	Records Per Page:		20						
# of Key Segments		2	Unused Page:		80	Bytes						
# of Duplicate Keys:		2	# of Keys:		2							
Key	Seg	DUP	MOD	Field Description	Field Len	Field Positions		Field			Limits	Note
						Start	End	Type	Dec	Pad		
0		X		Store Number	4	1	4	NUM	0	RJ0		
				Transaction Number	8	5	12	NUM	0	RJ0		
				Date	6	13	18	NUM	0	RJ0	mmddy	
				Time	6	19	24	NUM	0	RJ0	hhmmss	
1		X		UPC	20	25	44	NUM	0	RJ0		
				Periodic Code	5	45	49	NUM	0	RJ0		
				Blank	31	50	80	NUM		0F		

Note:

The Periodic Code is stored as 5 digits to allow for expansion in the future.

Out of Scope

Limitations of new features in this release are listed below (and were not addressed in development).

Note:

The limitations below are known as of this writing, and are provided in order to assist users and support personnel to plan, install and operate the capabilities described in this document. While StoreNext Retail Technologies LLC endeavors to ensure that this information is correct and fairly stated, no attempt is made here to catalog all limitations that could be construed or that may become known in the course of use or experience.

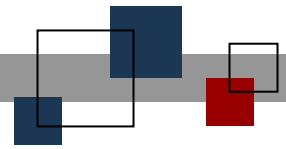
Enhancement	Out of Scope
Electronic Check Conversion (ECC) Enhancements	The Electronic Check Conversion (ECC) Enhancements feature is available for the current release only (and will not be made compatible with previous ScanMaster releases).
New Front Office Media Configurator	The New Front Office Media Configurator feature is available for the current release only (and will not be made compatible with previous ScanMaster releases).
Expanded Elements for Bundle Promotions	The Expanded Elements for Bundle Promotions feature is available for the current release only (and will not be made compatible with previous ScanMaster releases).
Check Decline Slip Printing	The Check Decline Slip Printing feature is available for the current release only (and will not be made compatible with previous ScanMaster releases).
Manual Account Number Entry Prevention	Manual Account Number Entry Prevention is available for the current release only (and will not be made compatible with previous ScanMaster releases).
Cashier Messaging Enhancement	The Cashier Messaging Enhancement is available for the current release only (and will not be made compatible with previous ScanMaster releases).
Post WIC Pre-Authorization Swipe Prevention	The Post WIC Pre-Authorization Swipe Prevention feature is available for the current release only (and will not be made compatible with previous ScanMaster releases).
Phone Number PIN Pad Entry	The Phone Number PIN Pad Entry feature is available for the current release only (and will not be made compatible with previous ScanMaster releases).

Enhancement	Out of Scope
Driver License Scanning Support	Driver License Scanning Support is available for the current release only (and will not be made compatible with previous ScanMaster releases).
IBM Touch w/32 Key Keypad Support	IBM Touch w/32 Key Keypad Support is available for the current release only (and will not be made compatible with previous ScanMaster releases).
Magazine Tracking Support	Magazine Tracking Support is available for the current release only (and will not be made compatible with previous ScanMaster releases).
Pre-Stage for Enhanced Price Management	The Pre-Stage for Enhanced Price Management is available for the current release only (and will not be made compatible with previous ScanMaster releases).

Dependencies

Dependencies to utilize new features in this release are listed below.

Enhancement	Dependencies
New Media Configurator for the Front Office	<ol style="list-style-type: none"> <li data-bbox="428 590 1222 701">1. An installed and configured OpenEPS payment system (WinEPS or Connected Payments) for any lane which receives electronic authorization.
New Check Decline Slip Printing	<ol style="list-style-type: none"> <li data-bbox="428 785 1154 854">1. TAC "Z – Print Decline Slip" as the last TAC in the OpenEPS tender sequence for paper and ECC check tenders.
Phone Number PIN Pad Entry	<ol style="list-style-type: none"> <li data-bbox="428 915 1166 984">1. Connected Payment Interface with MTX OpenEPS payment system version V825.0 (or later). <li data-bbox="428 1020 1218 1089">2. POS Workstation setting "Enable Phone # Lookup" (Promotions Tab) must be set to "Yes".
Magazine Tracking Support	<ol style="list-style-type: none"> <li data-bbox="428 1152 1222 1222">1. A scanner attached to the POS which can process UPC barcodes with supplemental data with acceptable success rates.
Manual Account Number Entry Prevention	<ol style="list-style-type: none"> <li data-bbox="428 1346 1138 1373">1. Use of MTX OpenEPS Payments or Connected Payments.



© StoreNext Retail Technologies LLC 2012

StoreNext Retail Technologies LLC endeavors to ensure that the information in this document is correct and fairly stated but does not accept liability for any error or omission.

The development of StoreNext products and services is continuous and published information may not be up to date. It is important to check the current position with StoreNext. This document is not part of a contract or license save insofar as may be expressly agreed.