



*Scan*Master

Release Notes and What's New

ScanMaster 2.8.0-090



ScanMaster V2 Release Notes and What's New

Date of Issue	Product ID Number	Part Number	Brief Description
July 2010	45001/082	89000577	2.7.1 Release
August 2010	45001/082	89000588	2.7.0-130 Release
September 2010	45001/082	89000589	2.7.1-060 Release
February 2011	45001/082	89000612	2.7.2-050 Release
May 2011	45001/082	89000640	2.7.2-060 Release
September 2011	45001/082	89000680	2.7.2-080 Release
January 2012	45001/082	89000713	2.8.0-050 Release
April 2012	45001/082	89000727	2.8.0-060 Release

Previous issues: 89000197 (2.1.2 Release); 89000275 (2.3.0 Release); 89000304 (2.3.1 Release Prelim); 89000317 (2.3.1 Release Final); 89000339 (2.4.0 Release); 89000376 (2.4.1 Release); 89000381 (2.4.2 Release); 89000411 (2.5.0 Release); 89000423 (2.5.1 Release); 89000454 (2.5.2 Release (Updated)); 89000491 (2.6.0 Release), 89000531 (2.6.1 Release); 89000551 (2.7.0 Release); 89000560 (2.6.1-080 Release); 89000565 (2.7.0-100 Release); 89000571 (2.7.0-110 Release)

**© Copyright Retalix, Inc. 1995-2012
All rights reserved**

This publication is protected by federal copyright law. This document and its contents are the proprietary, confidential information and property of Retalix, Inc. ("Retalix"). Unauthorized disclosure, reproduction, distribution or use of this document and/or its contents in any form is strictly prohibited. No part of this publication may be reproduced or transmitted into any human or computer language in any form or by any means, stored in a retrieval system, transmitted, redistributed, translated or disclosed to third parties, or de-compiled in any way including, but not limited to, photocopy, photograph, electronic, mechanical, magnetic or manual without the express written permission of Retalix or its licensors, if any. This document, notwithstanding the above, may be distributed in electronic or printed form to personnel who are employed by either (1) a Retalix customer of the subject system of this document or (2) personnel from an authorized Retalix Channel Partner of the subject system of this document. All copies, so distributed and/or so authorized, shall contain a full copy of this copyright notice.

Retalix has prepared this manual for use by users, authorized third parties and personnel of Retalix as a guide to the proper installation, operation, customization and/or maintenance of Retalix equipment and software. The drawings and specifications contained herein are the property of Retalix and/or its licensors.

Retalix endeavors to ensure that the information in this document is correct and fairly stated but does not accept liability for any error or omission. Retalix makes no representation or warranties with respect to the contents hereof, and specifically disclaims any implied warranties of merchantability or fitness for a particular purpose or non-infringement. No commitments by Retalix or its suppliers are made by or from this documentation which is provided for information only.

Development of Retalix products and documentation is continuous: Retalix reserves the right to revise this publication and to make changes from time to time in the contents hereof or in the products herein described or discussed without notice and without any obligation of Retalix to notify any person or organization of such revision or changes. Information published in this document will likely become obsolete over time and it is recommended that users regularly check for updates and newer versions.

The trademarks Retalix, StoreNext, ISS45, ScanMaster, R10, PocketOffice, RBO, Connected Payments, Connected Services, Connected Loyalty and all other Retalix product names are registered trademarks or trademarks of Retalix; all other trademarks or registered trademarks are the property of their respective owners. Third-party products, services, or company names referenced in this document may be trademarked or copyrighted by their respective owners, and are for identification purposes only. Copyrights, trademarks and license agreements shall be governed and construed in accordance with the laws of the State of Texas and the Federal Arbitration Act, and shall benefit Retalix, its successors, and assigns.

Address comments and corrections to:

Retalix, Inc.
Software Program Director
797 Commonwealth Drive
Warrendale, PA 15086

Table of Contents

Table of Contents	i
Introduction	1
IBM 67 Key Keyboard Support	2
Epson TM-H2000 \ TM-H2000U Printer Support	6
Technical Reference Appendix	7
Out of Scope	7
Dependencies	8

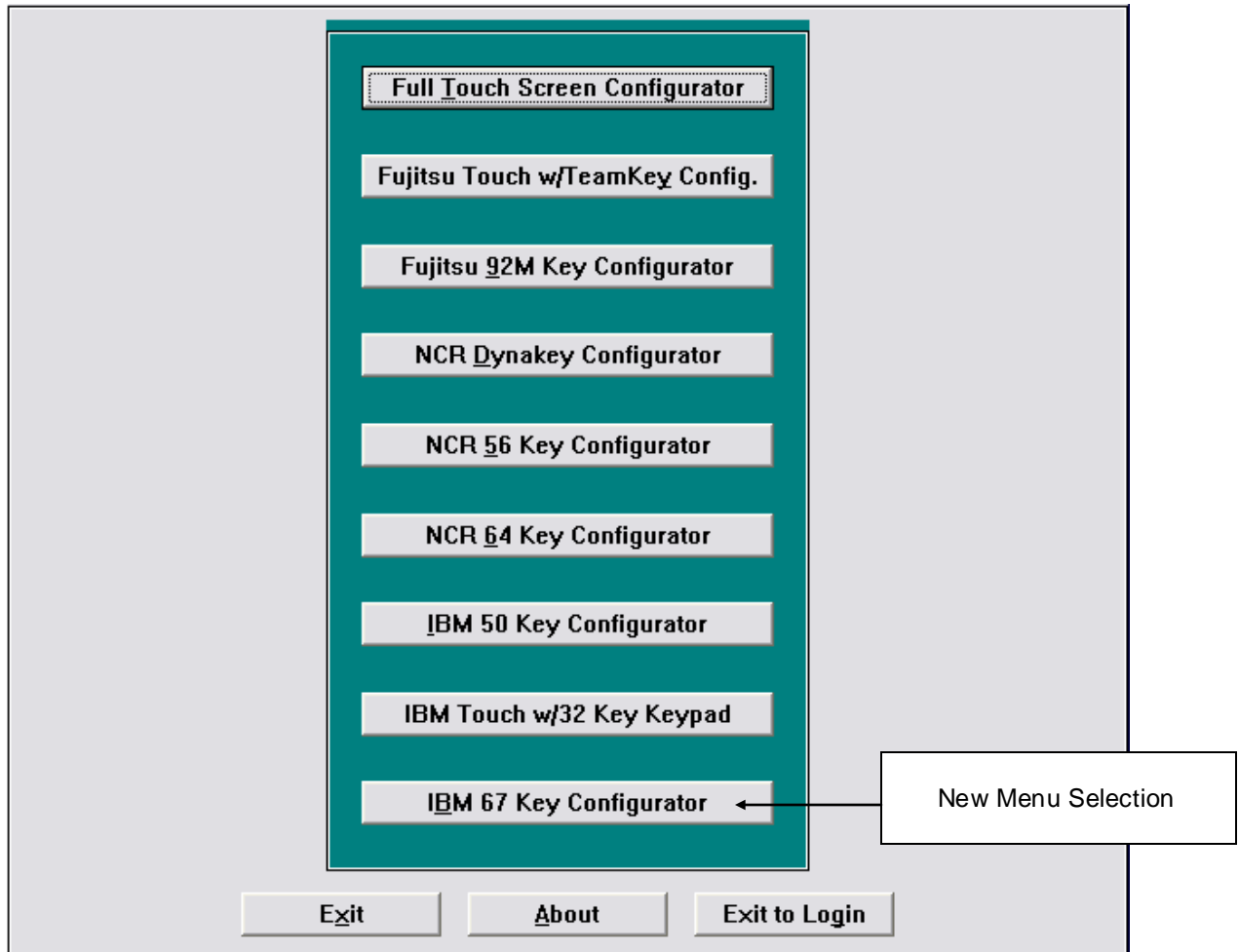
Introduction

A new feature was recently made to the ScanMaster system. The change is reflected in the accompanying 2.08.00-090 software.

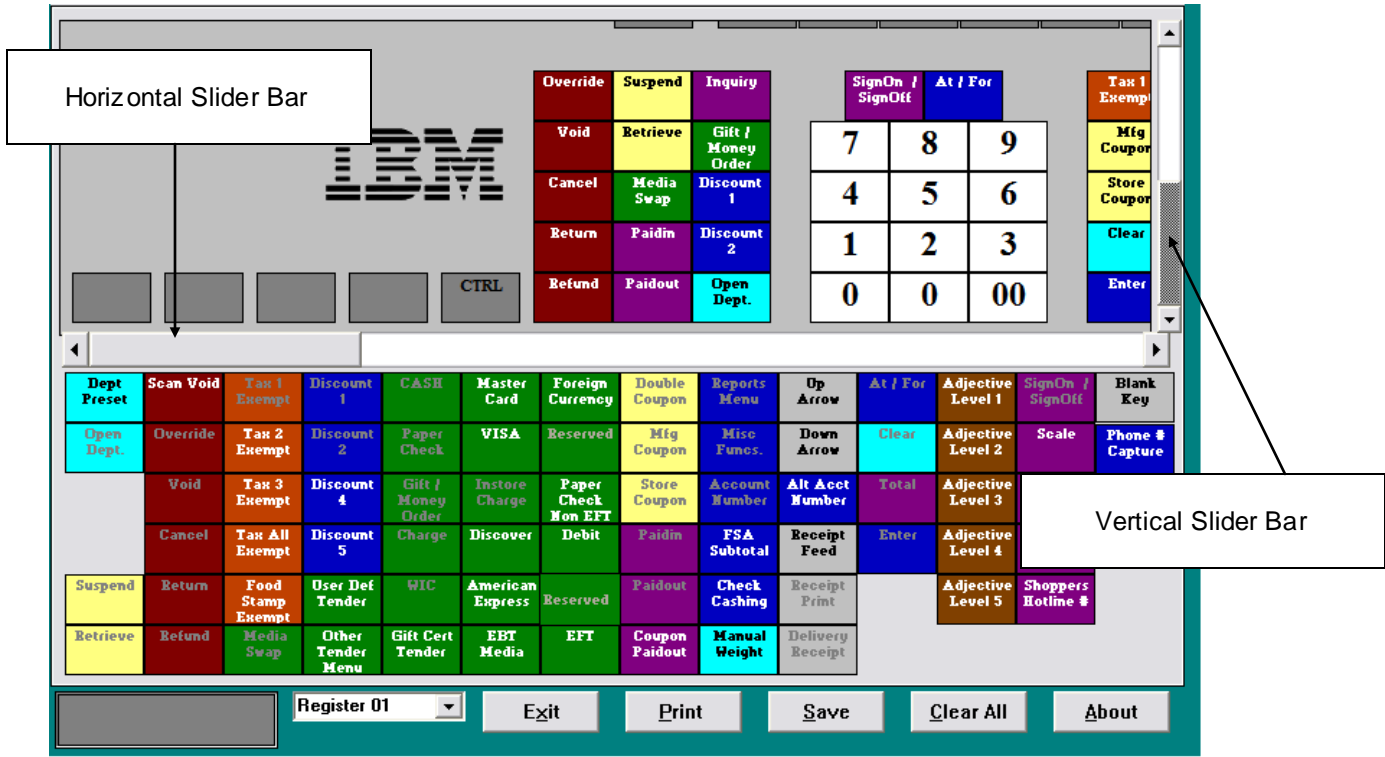
This enhancement is explained in detail in the following pages but is not included in your ScanMaster 2.08.00 User and Installation Guides.

IBM 67 Key Keyboard Support

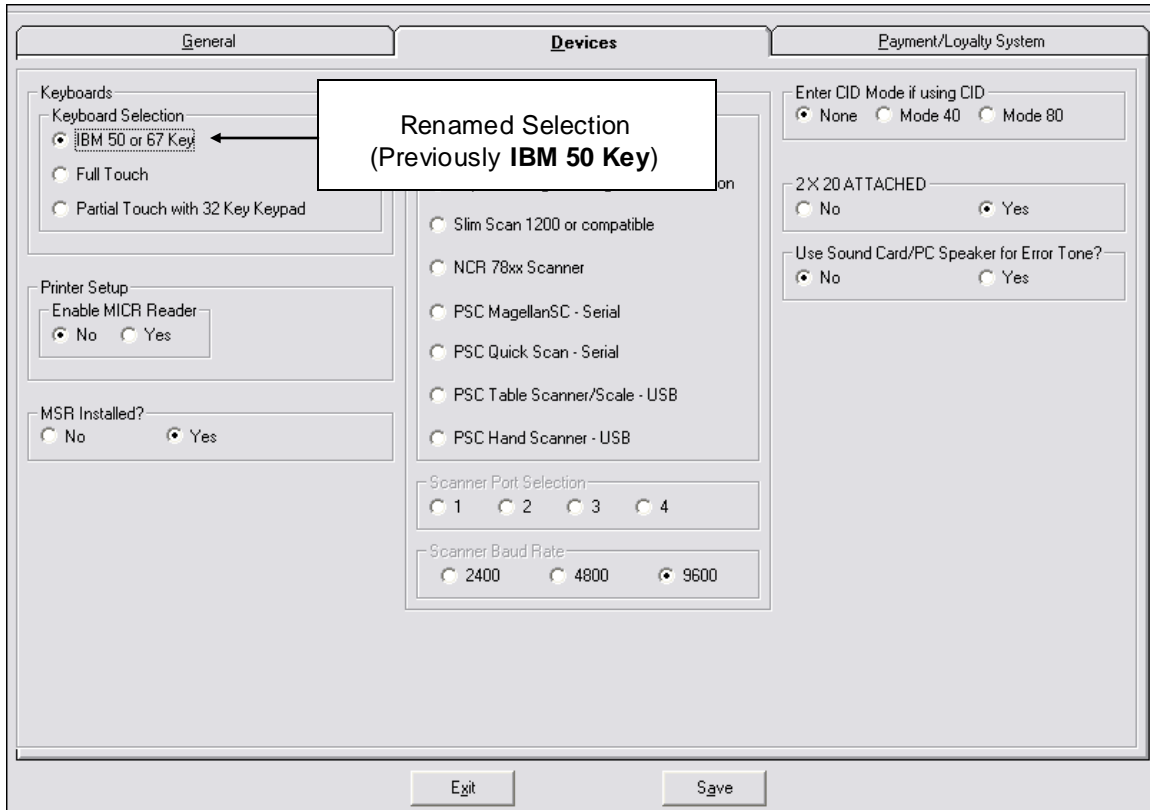
The ScanMaster POS Workstation now supports the IBM 67 Key Keyboard. In this release the Keyboard Configuration Screen displays with the new "IBM 67 Key Configurator" menu selection.



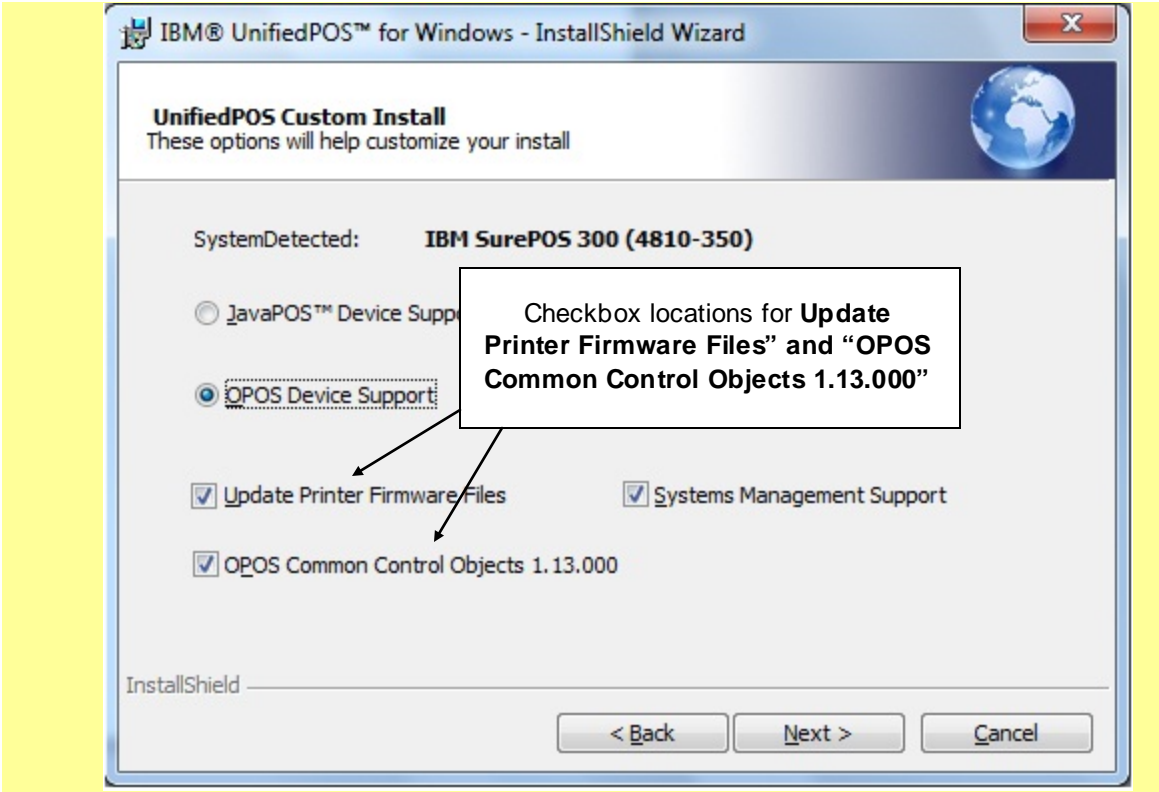
When selected, the IBM 67 Key Configurator screen appears. The configuration screen has both a horizontal and a vertical slider bar so the desired portion of the keyboard can be accessed for configuration.



In addition, the Hardware Devices Tab that is selected during the ScanMaster install now displays with the renamed "IBM 50 or 67 Key" selection under Keyboards.

**Note:**

It is required that the retailer have IBM UPOS version 1.13.3.21092 or higher. In addition, if the printer firmware is not at level 0E.06, the **Update Printer Firmware Files** and **OPOS Common Control Objects 1.13.000** options must both be checked during the UnifiedPOS install:



Epson TM-H2000 \ TM-H2000U Printer Support

ScanMaster now supports the Epson TM-H2000 (RS-232) and TM-H2000U (USB) printers for the following POS functions:

- Receipt Printing
- Document Printing (Endorsement Only)
- MICR Reading
- Check Voiding (using Franking Cartridge)

Note:

This printer does not perform check writing because it lacks the ability to rotate text by 90 degrees. It also does not have a wide enough document station to write checks in landscape orientation. The "ENABLE CHECK WRITING (Y/N)" setting in the Media Configurator must be set to "No" for all media.

Note:

Please reference the ***Epson OPOS v268E Installation.pdf*** document on the StoreNext website for the new OPOS installation.

Note:

The HP rp5800 will be fully supported (through a MakeHP setup utility) in ScanMaster 2.09.00-050. There will be a Technical Bulletin issued soon on how to configure the devices on an HP rp5800 for ScanMaster 2.08.00-050 and above.

Technical Reference Appendix

Out of Scope

Limitations of new features in this release are listed below (and were not addressed in development).

Note:

The limitations below are known as of this writing, and are provided in order to assist users and support personnel to plan, install and operate the capabilities described in this document. While StoreNext Retail Technologies LLC endeavors to ensure that this information is correct and fairly stated, no attempt is made here to catalog all limitations that could be construed or that may become known in the course of use or experience.

Enhancement	Out of Scope
IBM 67 Key Keyboard Support	IBM 67 Key Keyboard Support is for the current release only (and will not be made compatible with previous ScanMaster releases).
Epson TM-H2000 \ TM-H2000U Printer Support	Epson TM-H2000 \ TM-H2000U Printer Support is for the current release only (and will not be made compatible with previous ScanMaster releases).

Dependencies

Dependencies to utilize the new feature in this release are listed below.

Enhancement	Dependencies
IBM 67 Key Keyboard Support	<ol style="list-style-type: none"><li data-bbox="431 575 971 611">1. IBM UPOS version 1.13.3.21092 or higher.<li data-bbox="431 642 841 678">2. Printer firmware at level 0E.06.

Retalix



© Retalix, Inc. 2012

Retalix, Inc. endeavors to ensure that the information in this document is correct and fairly stated but does not accept liability for any error or omission.

The development of Retalix products and services is continuous and published information may not be up to date. It is important to check the current position with Retalix. This document is not part of a contract or license, save insofar as may be expressly agreed.