



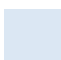




ScanMaster

-  *Installation Guide, ScanMaster*
-  *Datalogic Scanner/Scale*
-  *with OPOS 1.08*
- 
- 

ScanMaster V2 Installation Guide with Datalogic Scanner/Scales and OPOS

Date of Issue	Product Identification Number	Part Number	Brief Description
April 2009	45001/083	89000511	OPOS 1.08

**©Copyright StoreNext Retail Technologies LLC 1995-2009
All rights reserved**

This publication is protected by federal copyright law. No part of this publication may be reproduced or transmitted into any human or computer language in any form or by any means, stored in a retrieval system, transmitted, redistributed, translated or disclosed to third parties, or de-compiled in any way including, but not limited to, photocopy, photograph, electronic, mechanical, magnetic or manual without the express written permission of StoreNext Retail Technologies LLC or its licensors, if any. All copies, so authorized, shall contain a full copy of this copyright notice.

StoreNext Retail Technologies LLC endeavors to ensure that the information in this document is correct and fairly stated but does not accept liability for any error or omission. StoreNext Retail Technologies LLC makes no representation or warranties with respect to the contents hereof, and specifically disclaims any implied warranties of merchantability or fitness for a particular purpose or non-infringement. No commitments by StoreNext or its suppliers are made from this documentation which is provided for information only.

Development of StoreNext products and documentation is continuous: StoreNext Retail Technologies LLC reserves the right to revise this publication and to make changes from time to time in the contents hereof or in the products herein described or discussed without notice and without any obligation of StoreNext Retail Technologies LLC to notify any person or organization of such revision or changes. Information published in this document will likely become obsolete over time and it is recommended that users regularly check for updates and newer versions.

StoreNext Retail Technologies LLC has prepared this manual for use by users, authorized third parties and personnel of StoreNext Retail Technologies LLC as a guide to the proper installation, operation, customization and/or maintenance of StoreNext Retail Technologies LLC equipment and software. The drawings and specifications contained herein are the property of StoreNext Retail Technologies LLC and/or its licensors.

Third-party products, services, or company names referenced in this document may be trademarked or copyrighted by their respective owners, and are for identification purposes only.

Copyrights, trademarks and license agreements shall be governed and construed in accordance with the laws of the State of Texas and the Federal Arbitration Act, and shall benefit Retailix, its successors, and assigns.

Address comments and corrections to:

StoreNext Retail Technologies LLC
Software Program Director
6100 Tennyson Parkway
Suite 130
Plano, Texas 75024

Table of Contents

Table of Contents.....	1
Introduction.....	2
Installing the OPOS for the PSC Scanner & Scanner/Scale Devices	3
Installing PSC OPOS for Serial Devices	3
Installing PSC OPOS for USB Devices.....	4
Configuring the POS to Use a PSC Scanner & Scanner/Scale Devices	5
Programming the PSC Scanner & Scanner/Scale Devices	6
Programming the PSC Quick Scan 2500 (RS-232)	7
Note: Scan in order.	7
Programming the PSC QS6500 – 6500BT	8
Programming the Magellan 1000i.....	10
Programming the Magellan 1000i cont.....	11
Set up for the USB interface.	11
Programming the PSC 8200/8500 Magellan	12
PSC Magellan Flash Utility	14

Introduction

These fixes are reflected in the accompanying 2.04.01-050 software.

If you have any questions regarding this release, please contact StoreNext Support.

Installing the OPOS for the PSC Scanner & Scanner/Scale Devices

Note: Only install the PSC OPOS if you will also be installing a PSC Scanner or Scanner/Scale Device.

Installing PSC OPOS for Serial Devices

1. Explore to C:\Drivers\PSC OPOS\RS232

2. Double Click on **Setup.exe**

The PSC OPOS Welcome Screen Displays.

3. Click **Next**.

The PSC OPOS Licensing Agreement Screen displays.

4. Click **Yes**.

The Destination Location Screen displays.

5. Accept Default location and Click **Next**.

The Select Components Screen displays.

6. Validate that all components are selected.

7. Click **Next**.

Question- Do you wish to install the PSC Scale Control Object (not recommended)?

8. Click **No**.

Question- Do you wish to install the PSC Scanner Control Object (not recommended)?

9. Click **No**.

The Select Program Folder displays.

10. Click **Next**.

The Start Copying Files screen displays.

11. Click **Next** and **Finish**.


Note: The RS232 Install requires that a patch be installed manually to repair an under weight issue. The file c:\drivers\PSC OPOS\PSC_SC232.dll must be copied into C:\Program Files\PSC\Controls and registered.

Installing PSC OPOS for USB Devices

1. Explore to **C:\Drivers\PSC OPOS\USB**.
2. Double Click **R96-8421.exe**
The Welcome Screen displays.
3. Click **Next**.
The License Agreement displays.
4. Click “**I Accept**” and **Next**.
The Destination Location screen displays.
5. Click **Next**.
The Backup Replaced Files Screen displays.
6. Click **Next**.
The Select Components screen displays.
7. Click (Check) **ALL** Components and Click **Next**.
The Start Installation displays.
8. Click **Next**.
PSC USB OPOS is installed.
9. Click **Finish**.
After the restart is completed
10. Click **Start** → **Programs** → **PSC, Inc** → **PSC OPOS Configuration**
11. Click **Read**.
12. Make sure *English, Zero Valid* and *ASCII* are selected and
Click **Write**.

Configuring the POS to Use a PSC Scanner & Scanner/Scale Devices

Note: Only follow these instructions if you are installing a PSC Scanner or Scanner/Scale Device.

1. From the Task Bar on the POS, click Start .
The Run Dialog Box Displays.
 2. Click Browse.
 3. Open the C:\GROCERY\ folder.
 4. Double Click on MAKEPOSF.EXE and click ok to start the program.
The POS Install Welcome Screen Displays.
 5. Select the appropriate Scanner (**Serial**)
 - a. For the Quick Scan 2500, 6500, 6500BT or Magellan 1000i select PSC Quick Scan - serial.
 - b. For the 8200 or 8500, select PSC MagellanSC - serial.
 6. Select the appropriate com port and baud rate (usually 9600) for the scanner.
 7. Select the appropriate Scanner (**USB**)
 - a. For the Quick Scan 2500, 6500, 6500BT select PSC Hand Scanner - USB.
 - b. For the 8200, 8500 or Magellan 1000i select PSC Table Scanner/Scale – USB.
- Note:** The com port and baud rate do not apply to USB devices.
8. Click Save.

Programming the PSC Scanner & Scanner/Scale Devices

Additional Documentation on the PSC Scanner & Scanner/Scale Devices can be found at <http://na.psc.com/html/downloads.htm>.

Programming the PSC Quick Scan 2500 (RS-232)

Note: Scan in order.

Start Program



Exit



Defaults



Start Program



Code ID



0



1



Store Settings



RSS-14 Enable



0



1



Store Settings



Programming the PSC QS6500 – 6500BT

The PSC Quick Programming the PSC Quick Scan 6500, 6500BT Scan 6500, 6500BT is already programmed when shipped. To support the RSS-14 and Interleaved 2 of 5 additional programming needs to occur.

Note: Scan in order

Set up for the RS-232 Interface.

Return to Factory Defaults



Set Interface to RS-232



Enable RSS-14



Enable Interleaved 2 of 5



Programming the PSC QS6500 – 6500BT cont.

Set up for the USB interface.

Return to Factory Defaults



Set Interface to IBM USB



Disable Suffix



Disable Label ID



Host Transmission Buffer = 1



Enable RSS-14



Enable Interleaved 2 of 5

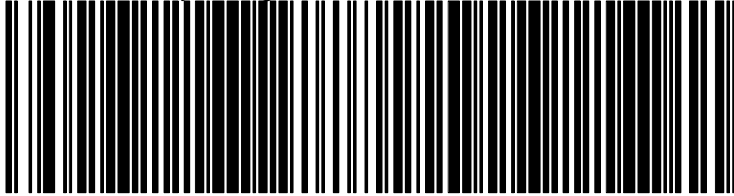


Programming the Magellan 1000i

The Magellan 1000i is already programmed when shipped.

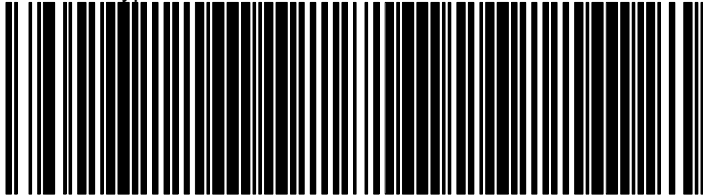
Set up for the RS-232 Interface.

Return to Factory Settings



³ 0 0 0 0 0 7 F F C 0 0 0 0 0 0 0

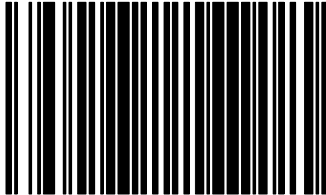
Interface Type = RS232 Standard



³ 0 0 0 0 0 0 0 0 1 0 5 0 0 0 0 0

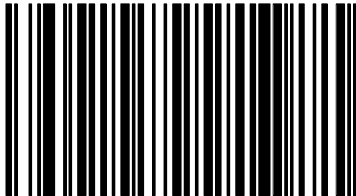
Scan the Switch Label, Scan the next two labels in order then scan the Switch Label again.

Switch Label



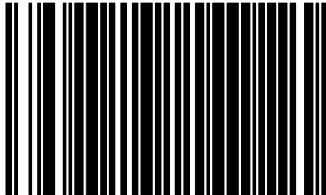
³ 0 0 0 0 0 0

RSS-14 Enabled



³ 0 4 D 0 0 1

Interleaved 2 of 5 Enabled

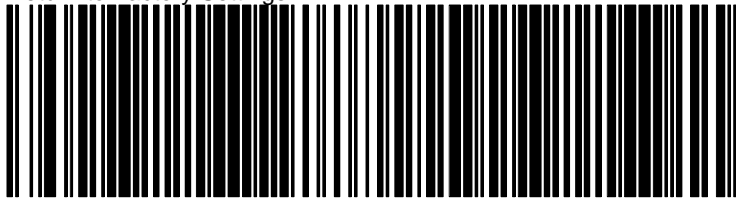


³ 0 0 9 0 0 1

Programming the Magellan 1000i cont.

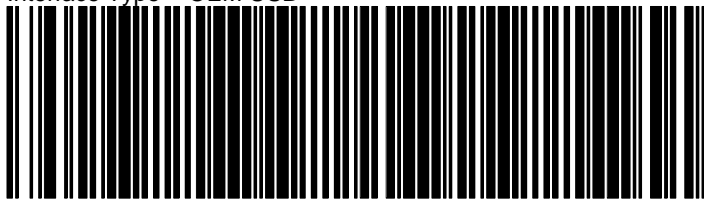
Set up for the USB interface.

Return to Factory Settings



³ 0 0 0 0 0 7 F F C 0 0 0 0 0 0 0

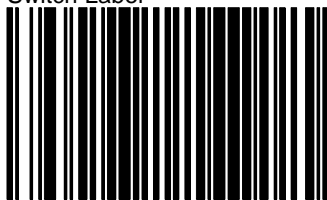
Interface Type = OEM USB



³ 0 0 0 0 0 0 0 0 1 4 5 0 0 0 0 0

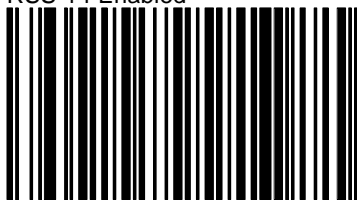
Scan the Switch Label, Scan the next two labels in order then scan the Switch Label again.

Switch Label



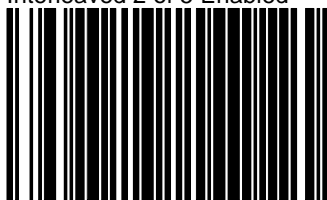
³ 0 0 0 0 0

RSS-14 Enabled



³ 0 4 D 0 0 1

Interleaved 2 of 5 Enabled



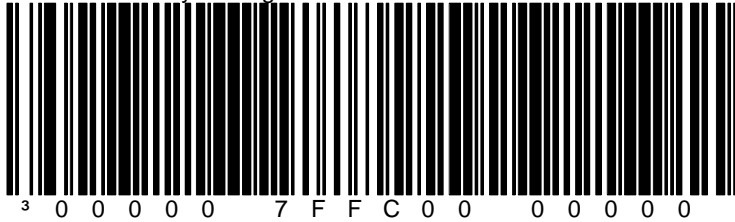
³ 0 0 9 0 0 1

Programming the PSC 8200/8500 Magellan

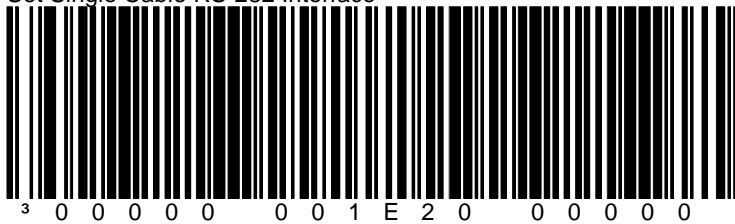
The PSC 8200/8500 Magellan is already programmed when shipped. To support the Interleaved 2 of 5 additional programming needs to occur.

Set up for the RS-232 Interface.

Return to Factory Settings

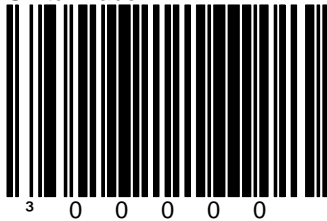


Set Single Cable RS-232 Interface

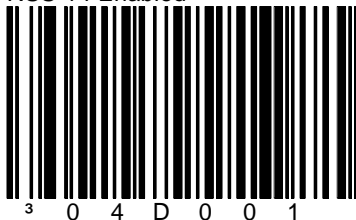


Scan the Switch Label, Scan the next two labels in order then scan the Switch Label again.

Switch Label



RSS-14 Enabled



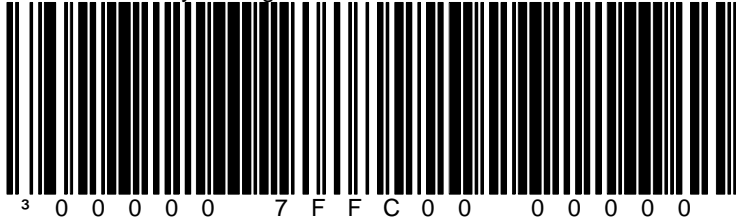
Interleaved 2 of 5 Enabled



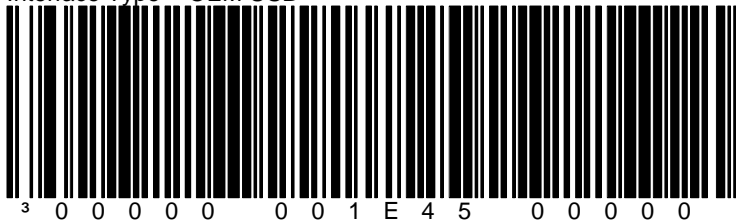
Programming the PSC Magellan 8200/8500 cont.

Set up for the USB interface.

Return to Factory Settings



Interface Type = OEM USB

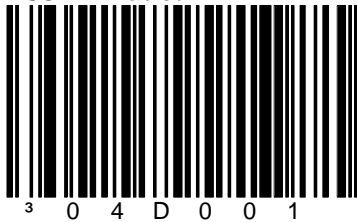


Scan the Switch Label, Scan the next two labels in order then scan the Switch Label again.

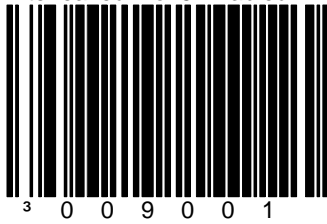
Switch Label



RSS-14 Enabled



Interleaved 2 of 5 Enabled

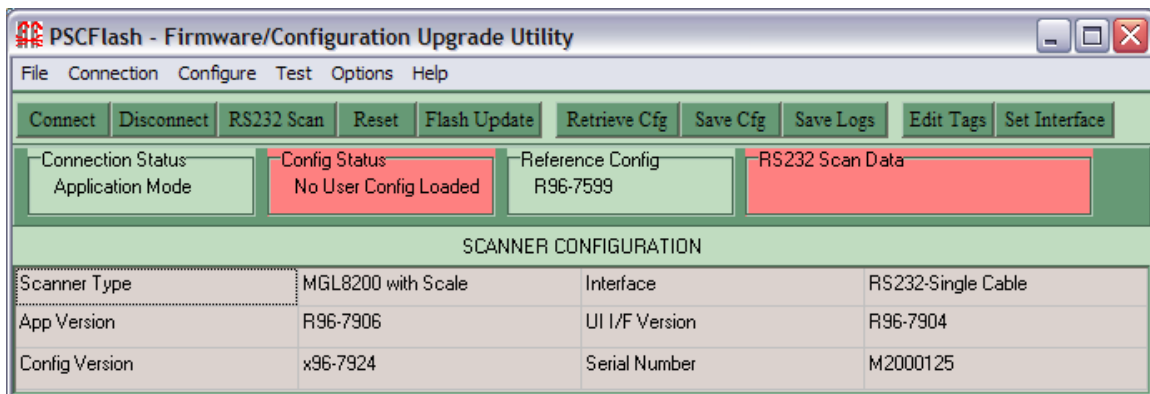


PSC Magellan Flash Utility

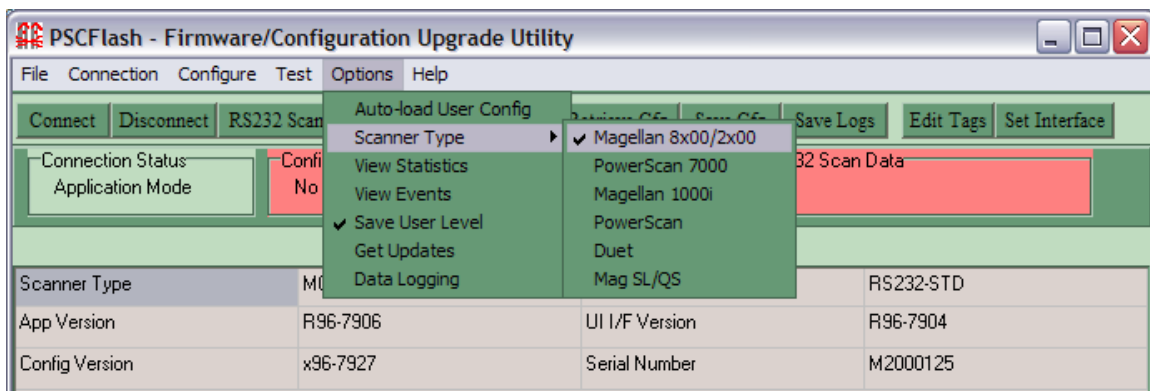
Please find the Flash Utility and Flash files on the ScanMaster 2.4.1 -050 Installation CD. \ PSC OPOS\Firmware Flash

Cable needed: For Most Magellan scanners use cable 8-0227-49, for PowerScan scanners use cable 8-0486-01, for the Magellan 1000i and Powerscan 7000 use cable 8-0751-04.

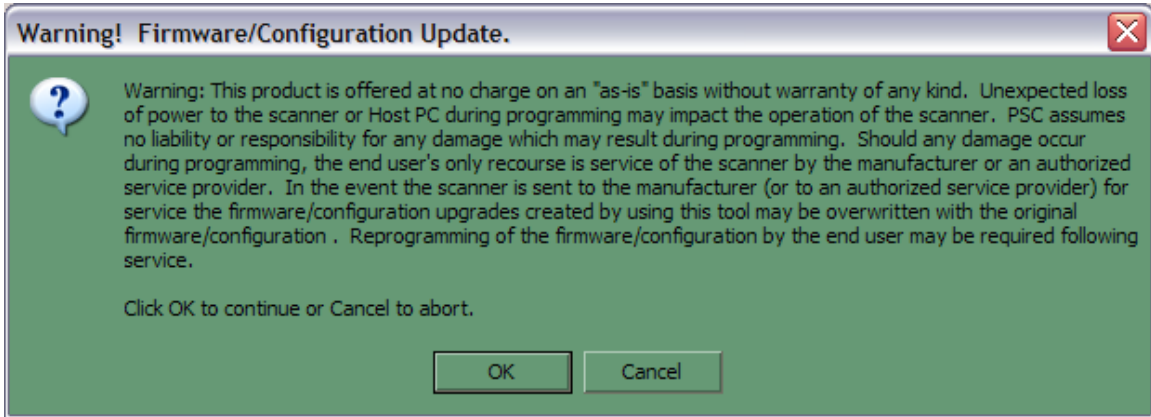
- Make sure to connect the appropriate cable to your scanner. For Magellans, connect the cable to the Aux port. If it comes up with a retry option, check your connections and make sure you are on com 1.
- Open up the ScanFlash program.



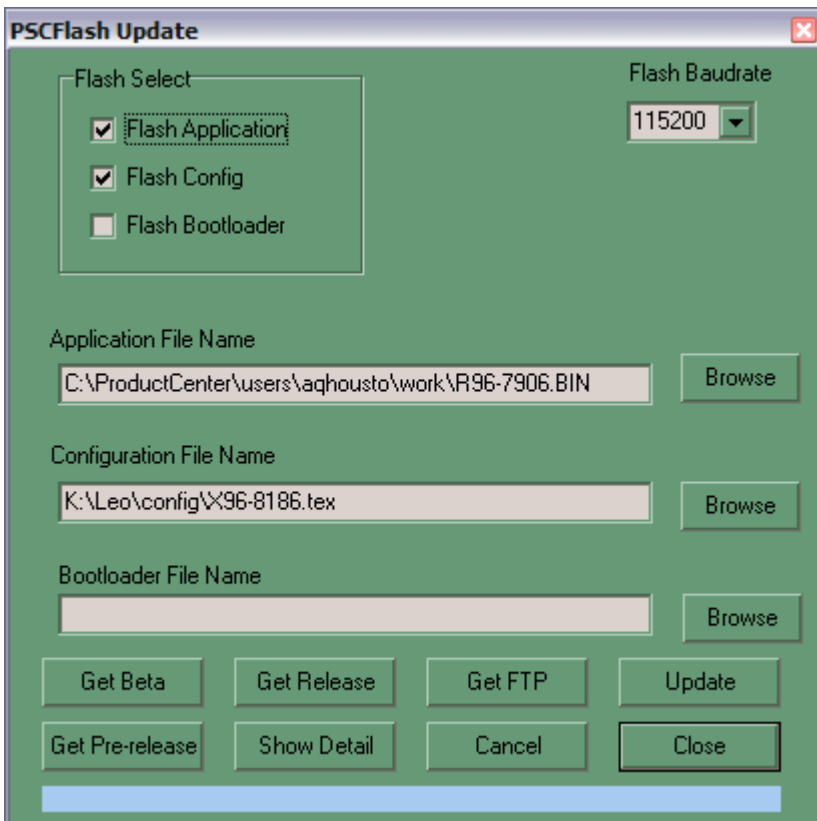
- Click on “Options” at the top and go to “Scanner Type” and select the scanner you will be flashing.



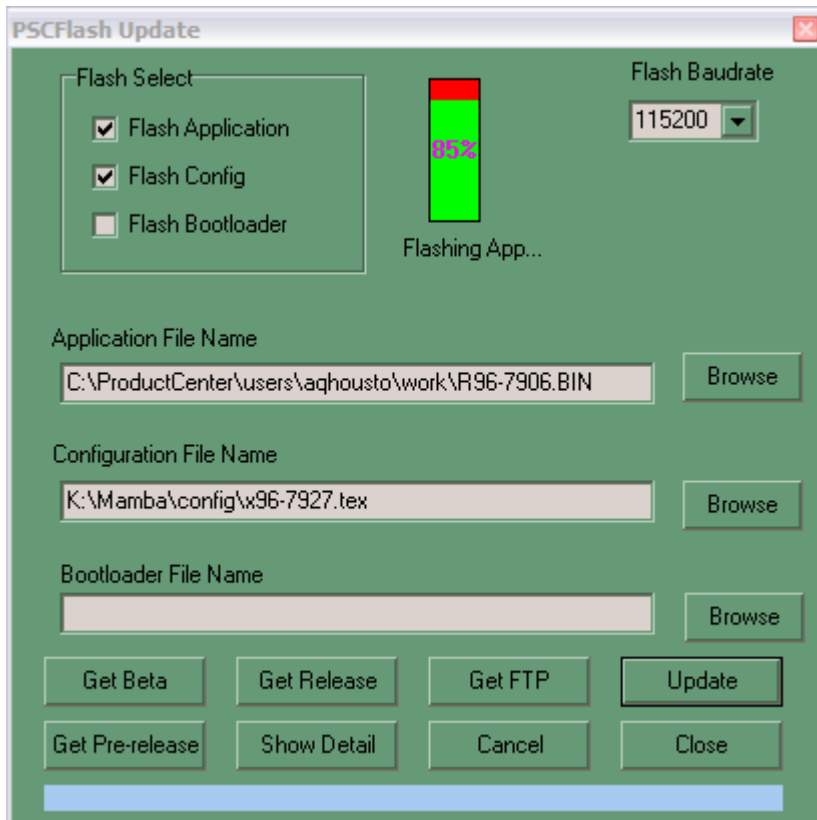
- Click on the button Flash Update.
- Click OK on the warning statement.



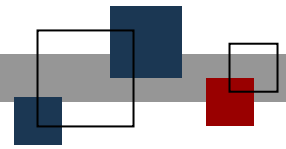
- Where it says "Flash Select" choose one or more items you will be flashing. Leave "Flash bootloader" unchecked.
- (Use app file name:**r96-8442.bin** Config file name:**x96-8423.tex**)



- Next, browse for the files you need to update in the scanner per the option/s you selected in the Flash Select section. (.bin files are application and .tex files are config files. **Never** use the Bootloader option for Magellans. Always keep that unchecked.)
- When you have chosen the correct files, click on Update and ScanFlash will update your scanner.



- When ScanFlash lets you know you have updated successfully click OK and then close the ScanFlash Update window.
- At the main window of the ScanFlash program click on Disconnect and close the program.
- Remove the cable from the scanner and test the scanner.



© StoreNext Retail Technologies LLC 2009

StoreNext Retail Technologies LLC endeavors to ensure that the information in this document is correct and fairly stated but does not accept liability for any error or omission.

The development of StoreNext products and services is continuous and published information may not be up to date. It is important to check the current position with StoreNext. This document is not part of a contract or license save insofar as may be expressly agreed.