



ScanMaster

-  *IBM SurePOS 300 E4A Setup*
-  *With ScanMaster 2.7.0*
-  *Issue a*
- 

SurePOS Setup with ScanMaster

Date of Issue	Product Identification Number	Part Number	Brief Description
May 2008	45001/113	89000438	Initial Release, SurePOS 300
February 2010	45001/113	89000555	Updated, SurePOS 300 E4A
February 2010	45001/113	89000555a	Updated

**©Copyright StoreNext Retail Technologies LLC 1995-2010
All rights reserved**

This publication is protected by federal copyright law. No part of this publication may be reproduced or transmitted into any human or computer language in any form or by any means, stored in a retrieval system, transmitted, redistributed, translated or disclosed to third parties, or de-compiled in any way including, but not limited to, photocopy, photograph, electronic, mechanical, magnetic or manual without the express written permission of StoreNext Retail Technologies LLC or its licensors, if any. This document, notwithstanding the above, may be distributed in electronic or printed form to personnel who are employed by either (1) a StoreNext customer of the subject system of this document or (2) personnel from an authorized StoreNext dealer of the subject system of this document. All copies, so distributed and/or so authorized, shall contain a full copy of this copyright notice.

StoreNext Retail Technologies LLC endeavors to ensure that the information in this document is correct and fairly stated but does not accept liability for any error or omission. StoreNext Retail Technologies LLC makes no representation or warranties with respect to the contents hereof, and specifically disclaims any implied warranties of merchantability or fitness for a particular purpose or non-infringement. No commitments by StoreNext or its suppliers are made from this documentation which is provided for information only.

Development of StoreNext products and documentation is continuous: StoreNext Retail Technologies LLC reserves the right to revise this publication and to make changes from time to time in the contents hereof or in the products herein described or discussed without notice and without any obligation of StoreNext Retail Technologies LLC to notify any person or organization of such revision or changes. Information published in this document will likely become obsolete over time and it is recommended that users regularly check for updates and newer versions.

StoreNext Retail Technologies LLC has prepared this manual for use by users, authorized third parties and personnel of StoreNext Retail Technologies LLC as a guide to the proper installation, operation, customization and/or maintenance of StoreNext Retail Technologies LLC equipment and software. The drawings and specifications contained herein are the property of StoreNext Retail Technologies LLC and/or its licensors.

Third-party products, services, or company names referenced in this document may be trademarked or copyrighted by their respective owners, and are for identification purposes only.

Copyrights, trademarks and license agreements shall be governed and construed in accordance with the laws of the State of Texas and the Federal Arbitration Act, and shall benefit Retailix, its successors, and assigns.

Address comments and corrections to:

StoreNext Retail Technologies LLC
Software Program Director
6100 Tennyson Parkway
Suite 130
Plano, Texas 75024

Table of Contents

Table of Contents.....	1
IBM SurePOS 300 (4810-E4A) Workstation Setup	2
Prerequisites.....	2
Introducing the IBM SurePOS 300 (4810-E4A).....	2
SurePOS 300 (4810-E4A) Hardware	6
Receiving and Unpacking the SurePOS 300.....	6
Assembly steps for the SurePOS System	8
Putting the Pieces Together	10
Putting the Pieces Together Continued.....	11
Powering on the SurePOS	12
Loading Drivers	14
Printer 4610-2CR	14
ELO Touch.....	14
Dual Monitor	14
PCI Serial Port Driver.....	14
OPOS	15
OPOS Installation - Screen Shots	15
Configuring OPOS - Screen Shots.....	26
Pervasive Installation	38
Installing Pervasive Workstation Engine.....	38
Pervasive v9.5 Patch Instructions when running Vista Business	40
Full Installation ScanMaster 2.07.00-050 For IBM SurePOS Workstation	41
Upgrading to ScanMaster 2.07.00-050 on the IBM SurePOS Workstation..	46

IBM SurePOS 300 (4810-E4A) Workstation Setup

This section describes the setup of a ScanMaster PoS Workstation. Instructions for installing the operating system, all necessary prerequisite components of ScanMaster and the workstation.

Note: DefDrive is your local drive. LanDrive is the Server drive.

Prerequisites

1. Operating System Recovery CD/DVD- 4462 WEPOS 1.1 Upgrade SP3 Recovery CD/DVD for SurePOS 300 if system is not preloaded. You should make an image of the factory image if your machines are preloaded.
NOTE: You can check your image version by double clicking on ID.txt file in c:\.
2. Pervasive v8.x/v9.x/v10.x Workstation Engine CD
3. ScanMaster v2.06.01-060 or higher is supported on this POST.
4. Network access to the ScanMaster server with the ability to access the Server's CD-ROM drive, if PoS Workstation is not equipped with a CD-ROM drive, and the ability to access the Server's SCAN1DOS share.

Introducing the IBM SurePOS 300 (4810-E4A)

IBM has significantly updated its hardware and earlier products have been withdrawn.

New StoreNext configurations and packages have been released. IBM Logic Units ("slices") are now available separately without peripherals, and cash drawers, displays and printers are also now available for separate sale. See the new demo and lab packages, which are available at very low cost. All the new packages are published in the updated [IBM Pricing Bulletin \(1224\)](#).

IBM SurePOS 300 (4810-E4A)

This new product provides some important advances and configuration advantages that increase its value. All StoreNext configurations now ship with this new version — the former version (4810-E3H) is no longer available from IBM. Advantages:

- Dual VGA is standard
- Standard RAM has been increased to 512MB
- The standard hard disk drive is now 160GB
- A new CPU: Intel ULV Celeron M 373 (1.0 GHz) is used
- Smaller size: 9.65" x 10.12" x 3.54" (245 mm x 257 mm x 90 mm)
- The new StoreNext packages are equipped with P-USB IBM SurePort I/O modules, providing:
 - 4@ 12V P-USB ports and 1@ 24V P-USB ports in the P-USB SurePort I/O module¹
 - 2@ standard USB ports
 - 2@ RS-232 ports
 - 1@ powered RS-232 port (DB9)
 - PS/2 keyboard/mouse
 - RJ45 Ethernet
 - 2@ VGA
 - Audio line-in, microphone, line-out.



The E4A is provided with a 1-year depot warranty. This provides dealers with a significant up-front cost reduction compared to the previous on-site warranty, and has enabled StoreNext to keep pricing of the packages very close or the same as the previous packages, despite the additional VGA ports, RAM, HDD and the new higher-cost printers.

See the new [IBM 4810-E4A brochure](#), available from the StoreNext Dealer Support Web site.



¹ A "legacy" version with "mixed SurePorts" is available as a Logic Unit only (for slice-only upgrades of existing lanes with RS-232 peripherals) providing 3@ RS-232 DB9 ports, 1@ 12V P-USB and 1@ 24V P-USB instead of the 5@ P-USB ports in the P-USB SurePort I/O module.

IBM SureMark Multi-Station Printer (4610-2CR)

This printer replaces the 4610-DG4/TG4 as StoreNext's multi-station printer in SurePOS 300, 500 and 700 POS packages. Overall, it's better and faster (though unfortunately not cheaper) but provides better value.

- Up to 80 lines per second, superior reliability, serviceability, and usability.
- Light-Path management coupled with tool-less replacement of major assemblies plus enhanced systems management sensors and usage counters make these models very easy to service and manage. The three Light-Path LEDs make diagnosing problems as easy as 1,2,3.
- The new 4610 Printers minimize landfill waste and carbon emissions by using packaging materials that consist mostly of recycled post-consumer materials. Additionally, these printers are designed to print the very latest in receipt media technology - new polymer receipt media, which offers a very green alternative to paper receipt media.
- Drop-and-load paper loading and a cover open button simplifies paper loading
- Support for large four-inch diameter paper rolls minimizes labor expenses by reducing roll changes.



This printer is now available separately to StoreNext dealers. It is packaged with its P-USB cable to minimize dealer cost.

See the new [IBM 4610-2CR Data Sheet](#), available from the StoreNext Dealer Support Web site.

IBM SureMark Single-Station Printer (4610-1NA)

This single-station printer replaces the 4610-TF6 in StoreNext's product line and SurePOS 300, 500 and 700 packages. Features include:

- Fastest IBM receipt printer ever—80 LPS—27% faster than top competitor
- Accurate, programmable sensor system monitors printer "health"
- Reduces paper changes by 46% with support for four-inch (102 mm) rolls
- Eco-friendly packaging and receipt media
- Resists spillage—channels liquids away from critical components
- Flexible mounting options include wall mounting with upside-down printing



This printer is now available separately to StoreNext dealers. It is packaged with its P-USB cable to minimize dealer cost.

See the new [IBM 4610-1NA Data Sheet](#), available from the StoreNext Dealer Support Web site.

IBM UPOS is supplied on the hard drive, but is not loaded. Please replace it with the current version that can be found on the StoreNext FTP site. Install and configure it by using the sections labeled 'OPOS Installation – Screen Shots' and 'Configuring OPOS – Screen Shots'. These sections contain step by step information relating on how to load and configure OPOS.

The following are 'fast path' steps to assist you in receiving, inventorying and assembling the SurePOS 300 system and peripherals.

SurePOS 300 (4810-E4A) Hardware

The IBM SurePOS 300 bundle includes a SurePOS 300 (4810-E4A) CPU, a Multi-Station IBM 4610-2CR printer, a touch 4820-5GN Flat Panel, a 50-Key POS Keyboard, a 2x20 External Customer Display (not shown), a Cash Drawer and Till (not shown).



Figure 1: IBM SurePOS 300 Hardware

Each piece that makes up the system is packed in separate boxes, within a single large over-pack. You should Inventory the entire shipment to make sure all pieces are present.

Receiving and Unpacking the SurePOS 300

Container

When you receive the SurePOS 300 and all the peripherals they will be packed into a single over-pack, possibly banded to a skid. There will be a box marked "Open Me First" within the over-pack. In this box you will find cabling, paperwork and the lock cylinders with a set of keys. Do not discard any of these items. Save the Golden Key as it is required for you to install the lock cylinders.

Remove the packing slip and validate the unit is complete. If there are pieces that are not noted (see the list below) then contact your distributor

to make sure they were shipped. If, when you open the over-pack and take an inventory and you find pieces are missing, look for another box that may include them.

Save the boxes for use in shipment to your customer unless you use specially designed ones to fit the assembled POS system. It may be your plan to have some assembly completed at the customer site. If this is correct, make sure all the parts are repacked in a manner so they will not be lost. If assembly is to be done at the customer, we recommend the cables be left attached to the SurePOS 300 where possible and disconnected from the peripherals. This will ensure the cables are connected to the correct ports.

Take an Inventory

Depending on what you order the SurePOS 300 (4810-E4A) will include the following:

- SurePOS Base Unit – 4810-E4A
- Black Power Cable
- Ethernet Cable
- 50-Key POS Keyboard
- 50-Key POS USB Keyboard Cable
- 50-Key POS Keyboard Lock Cylinder and keys
- Distributed Character Display (2x20)
- Distributed Serial Character Display Cable
- Powered USB Cable with Green End for Touch Flat Panel
- SurePoint Touch Flat Panel – 4820-5GN
- Flat Panel Stand
- 15 – Pin Video Cable
- SureMark Printer – 4610-2CR
- Powered USB Cable with Red End
- Roll of Thermal Paper
- Slip Printer Ribbon
- Full Size Cash Drawer
- Distributed (long) Cash Drawer Cable
- Cash Drawer Fixed Till
- Cash Drawer Lock Cylinder and keys
- Gold Key for lock Cylinder installation

Assembly steps for the SurePOS System

SurePoint Touch Flat Panel

Open the two boxes with the SurePoint Flat panel and the table top mounting stand. Set the flat panel face down on a table. There are three plastic pieces that come with the unit. Two pieces are already attached to the table top mounting stand. Place the stand on the table and remove the pieces as follows. The top piece covers the hinge mechanism. Depress each side of the curved plastic piece to clear the plastic beads from the holes in the frame and remove it. Slide the piece that covers the rest of the stand, an angled piece, backwards, parallel to the table. It will disengage from the frame.

Insert the Powered USB cable into the base of the Flat Panel. Make sure it clicks into place. Attach the video cable and tighten.

Assemble the stand onto the Flat Panel. The stand has two tabs on the top that will fit into holes on the back of the Flat Panel. Make sure the cables are routed from the Flat Panel to the back side of the stand, thru the rectangular opening in the stand. When the stand is engaged into the Flat Panel, attach it by using the 4 brass screws that are supplied.

Route the cables behind the two retaining clips on the back side of the stand and make sure the cables exit the stand in the center of the base.

Replace the angled plastic by reversing the steps from above. Simply insert the base of the plastic into the base of the stand and slide it forward until it clicks.

Replace the curved plastic piece by reversing the steps from above. Simply depress each side and slide it back into the retaining holes on the frame.

Place the larger, square, plastic piece on the back of the Flat Panel to cover the open areas left. It will click into place. Some force may be required.

SureMark Printer

Unpack the SureMark Printer. In the box there should be a Powered USB cable with a red end, a small roll of thermal paper and a ribbon. If the interface board comes separate you will need to snap it into place by turning the printer over, insert the one end and line up the connector and snap into place.

Remove the tape from the outside of the printer and make sure all pieces are still in tact. Open the front cover at the Document Insert Station and remove the shipping cardboard.

Turn the printer over and install the Powered USB cable into the port on the printer. It will fit only one way, with the metallic side of the cable visible from the bottom. Make sure it clicks into place.

Turn the printer back over and install the printer ribbon and the thermal paper you plan to ship with the unit. Make sure the thermal paper unrolls from the top towards the back. This orients the paper to print on the correct side. Feed the paper thru the opening in the back cover and close the cover.

External Customer 2x20 display

Open the box identified to include the 2x20 external display. In the box you will find the display, the pole and mounting base, the cradle and two plastic screws. In the box marked "Open Me First" there should be a black cable that has a 15-pin D Shell connector on one end and a square, modular, connector on the other.

Attach the cradle to the mounting base and run the cable from the opening in the base of the stand thru the top of the cradle. Make sure the square, modular, end is showing at the top of the cradle.

Plug the cable into the 2x20 and make sure it clicks into place.

Orient the Display into the cradle. Be cautious that it is set correct. It is designed to be able to tilt backwards. If it is attached incorrectly it will not tilt the right way. Snap the sides of the mounting base over the edges of the 2x20 and click it into place.

IBM Cash Drawer

Open the large box with the cash drawer and a smaller one with the cash drawer till. The cash drawer cable will be in the box with the drawer. In the box marked "Open Me First" you will find a lock cylinder with two keys. You will also find a "Golden" key.

Install the lock cylinder by setting the drawer on table with the drawer end upward. Look into the cylinder to make sure the groove in the insert area is oriented vertically with the wider part at the top. If it is not, use a flat blade screwdriver to line it up. It is important as the lock cylinder fits into the groove. Fully insert the 'Golden' key into the lock cylinder. You will see an additional tumbler moved. Insert the cylinder into the drawer with the teeth of the key upward. The cylinder will seat where it is flush with the outside of the receptacle. Hold the cylinder in place and remove the key. Insert the silver key and turn it leftward to see if the drawer opens. If it does not, remove the cylinder and reinstall it.

IBM 50-Key Keyboard

Open the box with the 50-Key keyboard. Find the standard USB cable that attaches the printer to the POS. At one end of the cable is a standard USB "A" and the other a unique plug that fits into the keyboard. Plug the cable into the keyboard.

Install the lock cylinder by setting the keyboard on table. Look into the cylinder receptacle to make sure the groove in the insert area is oriented vertically with the wider part at the top. If it is not, use a flat blade screwdriver to line it up. It is important as the lock cylinder fits into the groove. Fully insert the 'Golden' key into the lock cylinder. You will see an additional tumbler moved. Insert the cylinder into the keyboard with the teeth of the key upward. The cylinder will seat where it is flush with the outside of the receptacle. Hold the cylinder in place and remove the key. Insert the silver key and turn it leftward to see if the cylinder turns. If it does not, remove the cylinder and reinstall it.

There should also be a package of key overlays that can be used to label the keys as appropriate.

When this is complete keep the "Golden" key secure as this will open all IBM drawers.

Putting the Pieces Together

Total system assembly at your customer's location will depend on the physical setup. However, for driver and application loading follow these steps.

The following is a picture of the back of the SurePOS 300 (4810-E4A)



Figure 2: IBM 4810-E4A Back

Putting the Pieces Together Continued

Make sure no power cables are plugged in to a wall outlet.

Place the SurePOS Cash Drawer on a table. Route the drawer cable thru the opening in the back cover and the top of the drawer.

Place the SurePOS 300 on the top of the drawer and plug the drawer cable into the port marked CD1.

Place the IBM Touch Flat Panel and stand on the top of the SurePOS 300. Plug the video into POS VGA 1 Port. Plug the Powered USB Cable into a Green USB port marked 12V. Do not power on the Flat Panel.

Plug the Customer Display in VGA 2 Port.

Place the SureMark Printer on the top of the drawer and plug the Red ended Powered USB cable into the only 24V powered USB Port. It is the only Red port on the back of the unit.

Prop the 2x20 external customer display near the SurePOS and plug the black cable into the Powered port marked "C". It is a 15 to 9 pin RS232 (Female) connector to the left of the cash drawer port.

Plug the Ethernet cable into the port marked Ethernet.

Plug the 50-Key keyboard cable into the bottom PC USB port, just to the right of Video port 2.

You are now ready to power up the unit.

Powering on the SurePOS

The following is a picture of the front of the SurePOS 300



Figure 3: IBM 4810-E4A Front

Plug the Power cable into the SurePOS and plug it into a wall outlet and press the Off / On button located on the front of the unit in the top right corner.

Look at the power indicator on the IBM Touch Flat Panel. Press the power button to power the unit on. If there is no image on the Flat Panel and if the power LED is not lit or it is orange in color, check the cabling to make sure all connections are tight.

The following is a picture of the front of the SurePoint 4820 Flat Panel.

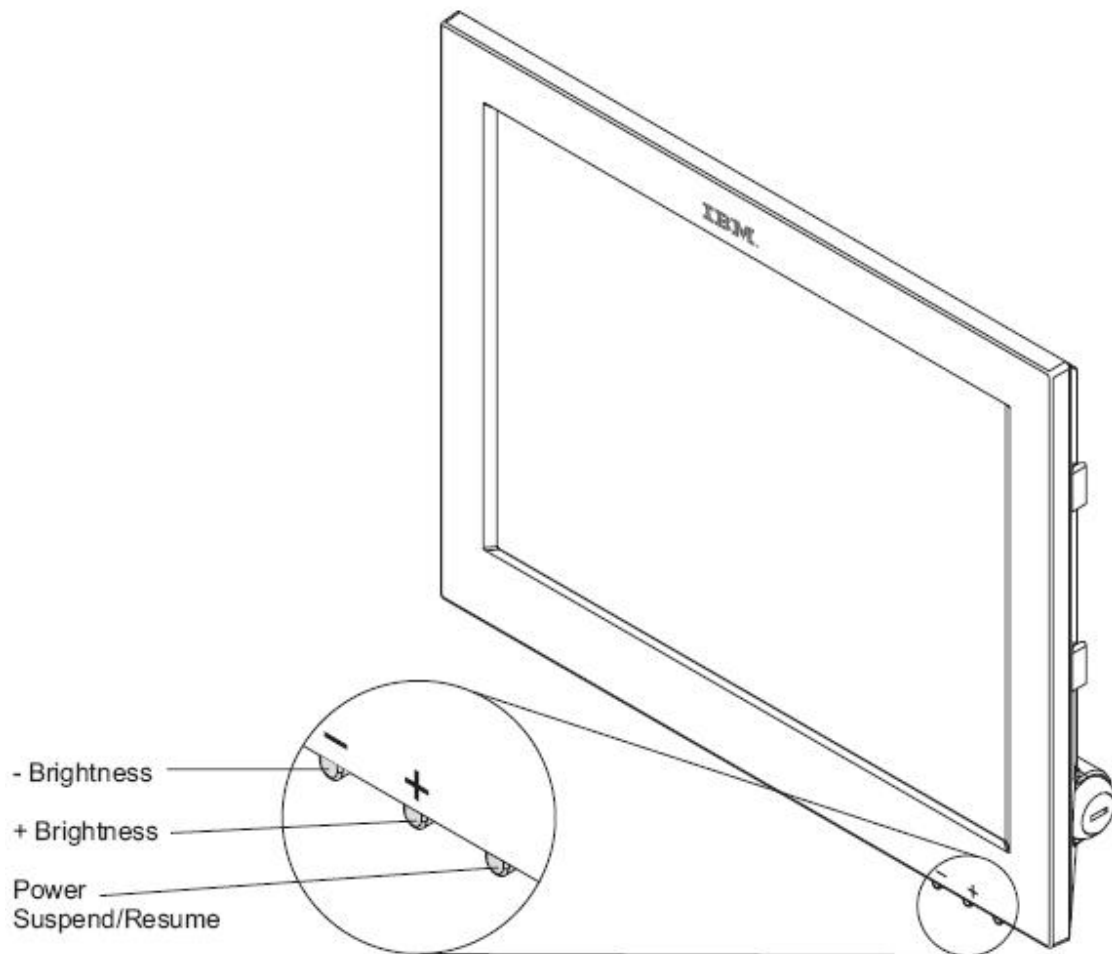


Figure 4: 4820 Flat Panel Controls

At this point you will also hear the printer reset. If it does not, check the cable connections at the printer and the SurePOS 300. There is no Off / On Switch on the printer.

You should also see a single line, like a cursor, on the external 2x20 customer display. If it is not visible, check the cable connections. The port it is plugged into, 'C', is a powered serial port.

At this point, if all devices are up and running you will be taken to the Windows Desktop. The Administrator password that is shipped with the preload is wepos1!

It must be in lower case.

The next step is to load the necessary drivers.

Loading Drivers

The SurePOS 300 (4810-E4A) come preloaded with WEPOS, V1.1 Upgrade SP3 and all the component level drivers that are required for it. There are additional drivers that you need to load. They are:

Printer 4610-2CR

You will need to replace “aip46v4.hex” that is located in c:\pos\firmware folder by overwriting the file that is presently there. The next time the POST is rebooted the driver will update the firmware printer. This typically takes a few minutes. You can check on the status of update in c:\pos\log\aipfld46.log. **DO NOT TURN OFF PRINTER WHEN UPDATE IS IN PROGRESS.** Use the latest Printer firmware available on the StoreNext website.

Printer EMULATION should also be set to NATIVE MODE. Press the paper feed button while cycling power to printer to get into diagnostic mode and follow instructions on receipt printout. For more information refer to the 4610 User guide.

ELO Touch

Microsoft comes loaded with an ELO compatible driver, but we recommend loading the driver that is tuned for the IBM 4820 Flat Panel. The location of the latest touch driver is provided on the StoreNext Website.

Dual Monitor

Go to the Control Panel and select Display and then Settings. You should see two displays present. Click on #2 and make sure the checkbox labeled “Extend my windows desktop onto this monitor” is checked. Set the resolution for the Secondary video display to 800 x 600. You should now have a second video display.

PCI Serial Port Driver

This driver is required to enable all the serial ports above COM2. It is already loaded. Look in the Device Manager to make sure COM1 – COM6 are enabled (Serial A – F).

OPOS

The IBM UPOS offering is located on the StoreNext Website.

Copy all IBM Drivers and Installs from the StoreNext Website and place in C:\drivers on the IBM SurePOS register. Run the setup and follow the screen shots that are following.

OPOS Installation - Screen Shots

Launch the setup wizard

The following screen appears preparing the installation

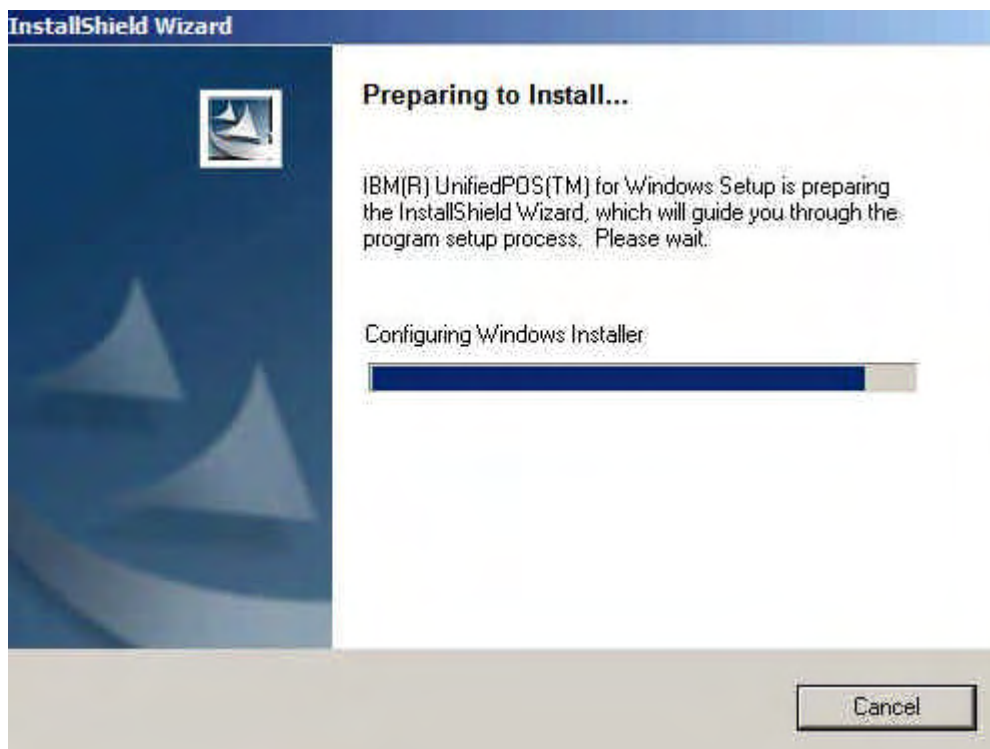


Figure 5: Launching UPOS Install

Click on **Next >** when the following appears.



Figure 6: UPOS Install Welcome

Accept the license agreement and click on **Next >**

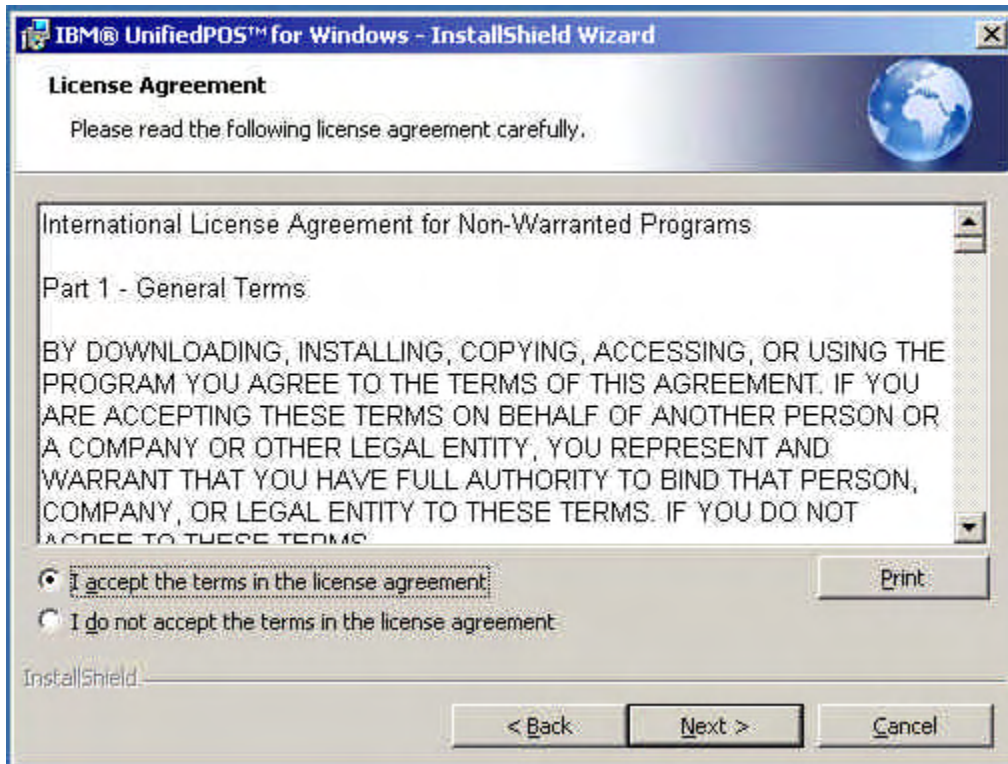


Figure 7: UPOS License Agreement

Leave the Install defaulted to C:\POS\ and click on **Next >**

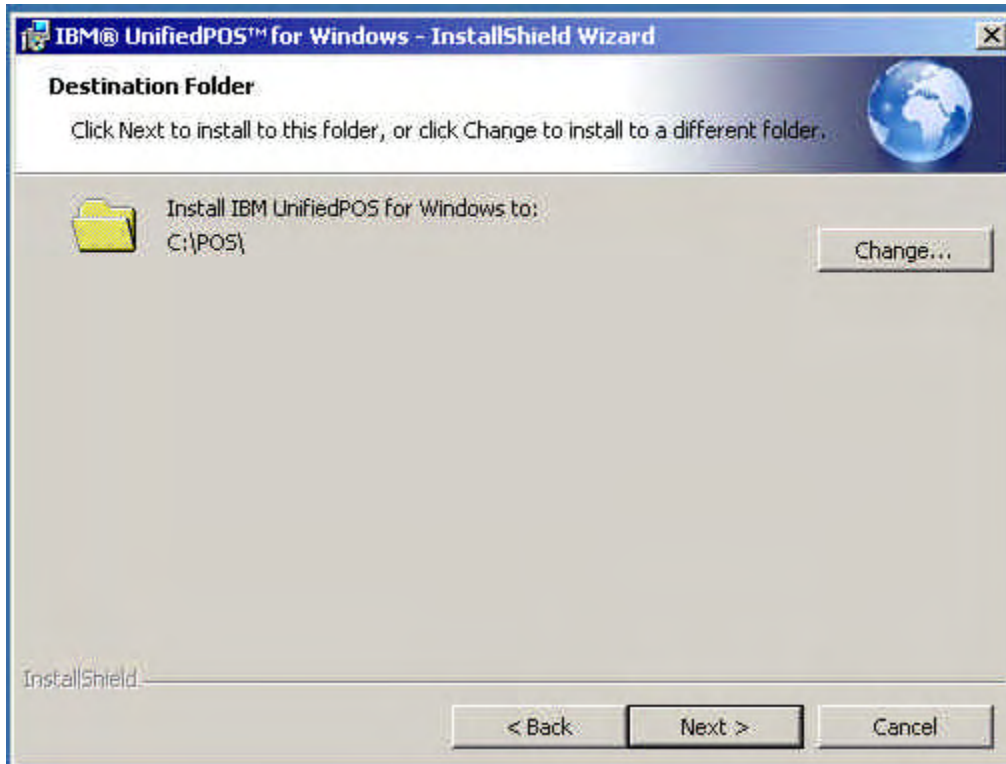


Figure 8: UPOS Customer Information Screen

The next screen will allow you to pick the installation type. Check only OPOS Device Support and when you do the screen will expand to include the products and other checkboxes. Do not check the check box labeled "Check to Install Java and JCOMM."

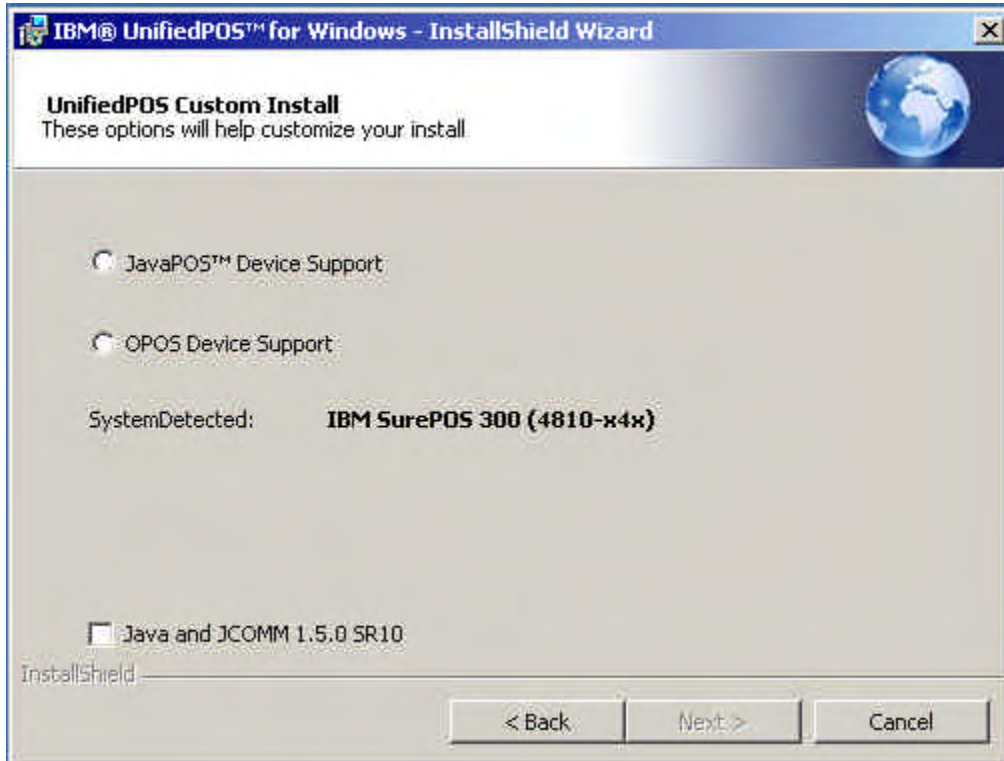


Figure 9: UPOS Installation Type

On this screen, place a check in the checkbox labeled “Update Printer Firmware Files” and “OPOS common Control Objects 1.12.000.” Again, do NOT place a check in the checkbox labeled “Java and JCOMM 1.5.0 SR10.” Then click on **Next >**



Figure 10: UPOS Custom Install Screen

You do not have an IBM Alphanumeric Point of Sale Keyboard so make sure the radio button beside No is selected, then click on **Next >**

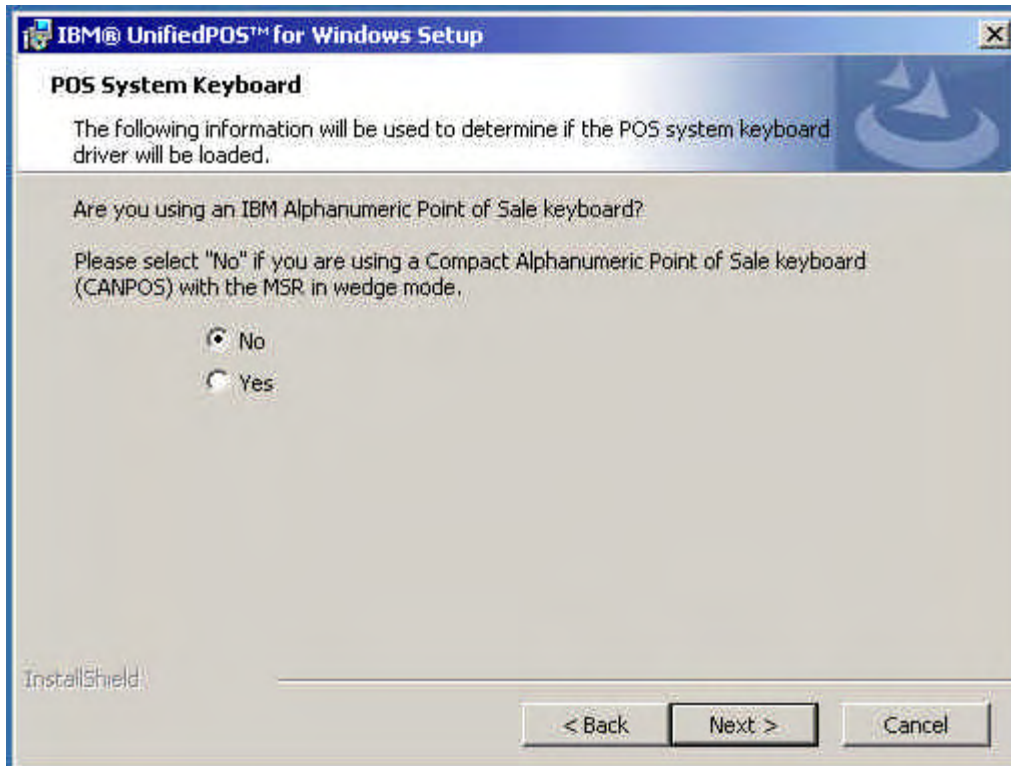


Figure 11: OPOS System Keyboard Screen

Click **Install** to perform the OPOS installation.

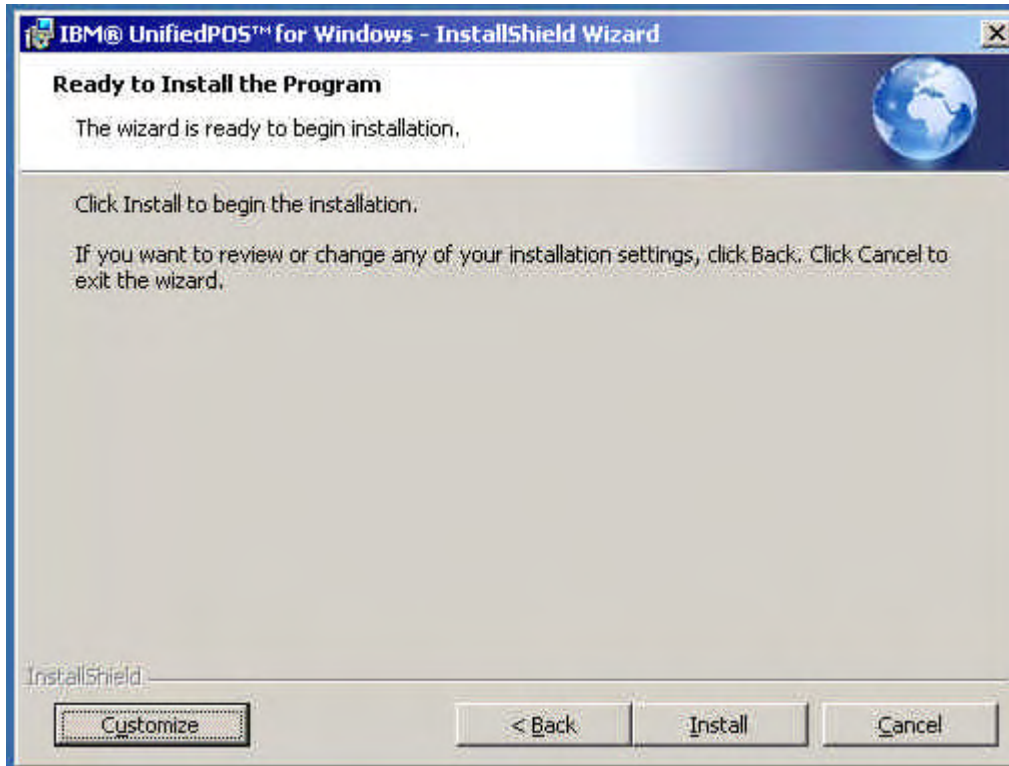


Figure 12 OPOS Install

As the installation progresses there is a status indicator present.



Figure 13: OPOS Status

When the installation is complete, click **Finish**

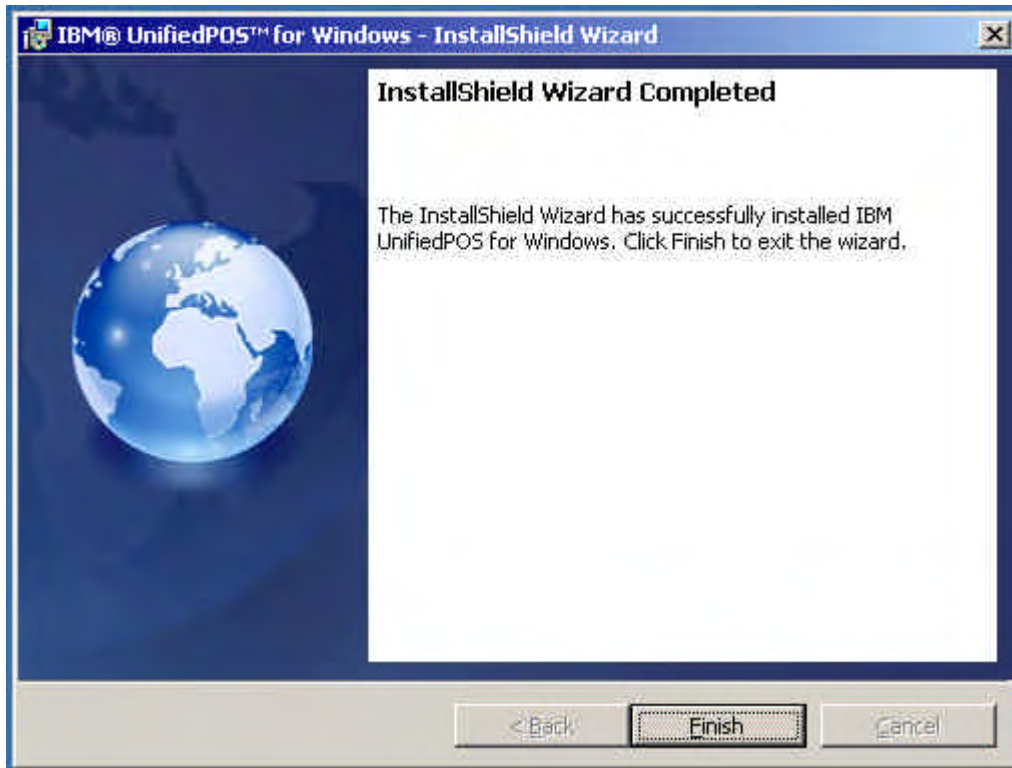


Figure 14: OPOS Install Completion

Before responding to the RESTART message do the following:

In Services, set IBM POS CONTROL Service from MANUAL to AUTOMATIC.

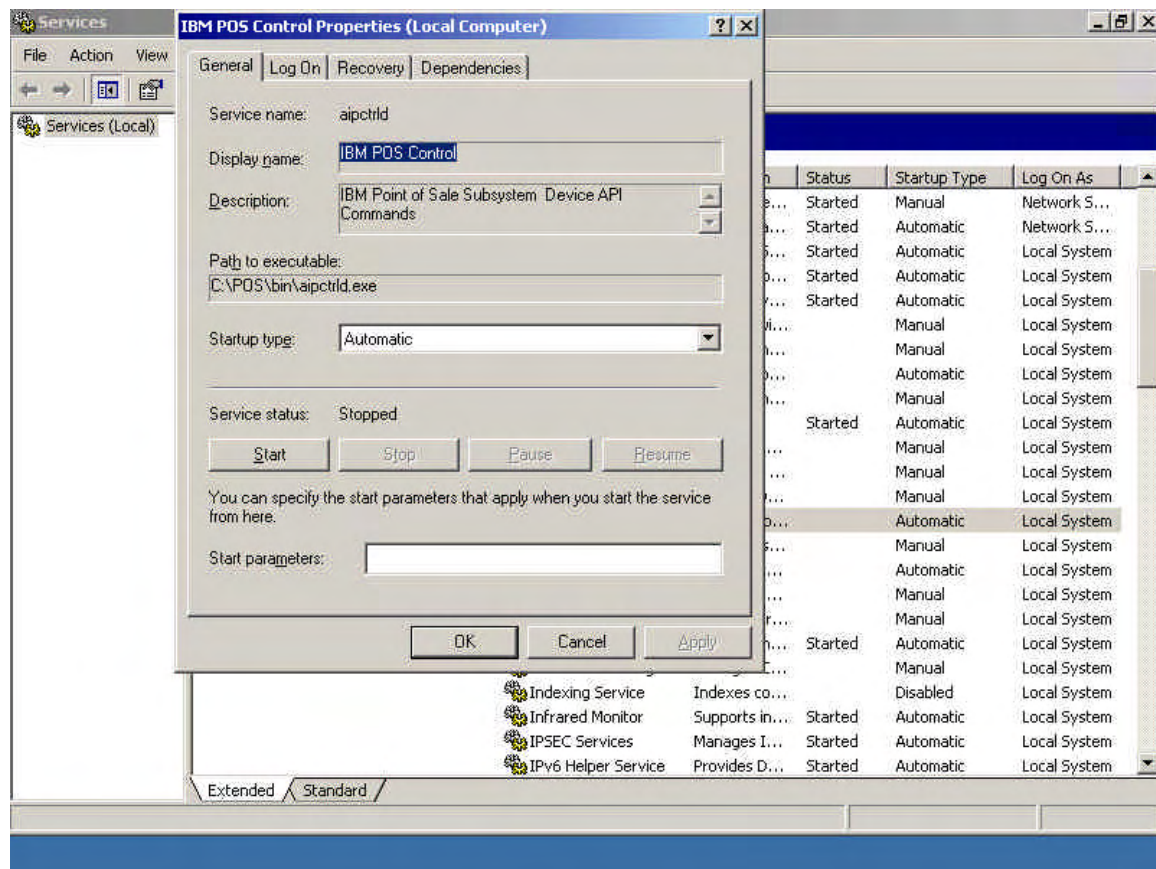


Figure 15: Set IBM POS Control Service from Manual to Automatic

You will need to reboot the SurePOS 300 at this time, so click **Yes**

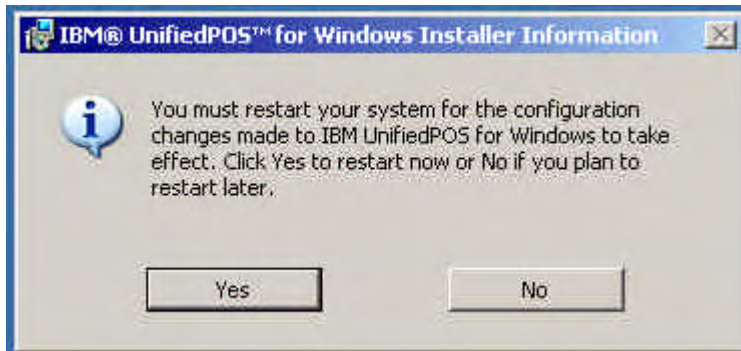


Figure 16: OPOS Reboot

After the SurePOS 300 has rebooted and is at the Windows Desktop you may see a window appear indicating the printer firmware is being updated. Both lights on the top of the printer will flash. Please **DO NOT** stop this action and **DO NOT** turn the system off. The printer firmware, including the boot sector, is being updated. Shutting it down too soon may damage the printer. This operation may take up to ten minutes. The message will disappear and the printer will reset and the blinking lights will now remain lit constantly.

Configuring OPOS - Screen Shots

Launch the Configuration Utility

After you have loaded OPOS you must configure the devices so the application will recognize them and be able to use them. The following steps should be followed.

Click on "Start" in the task bar, then "All Programs", then "IBM POSUnified for Windows" then "IBM OLE for Retail Point of Sale" then "Configuration Utility". The following Screen will appear. Some items may already show up as on-line. However most should be in black and show up as Available.

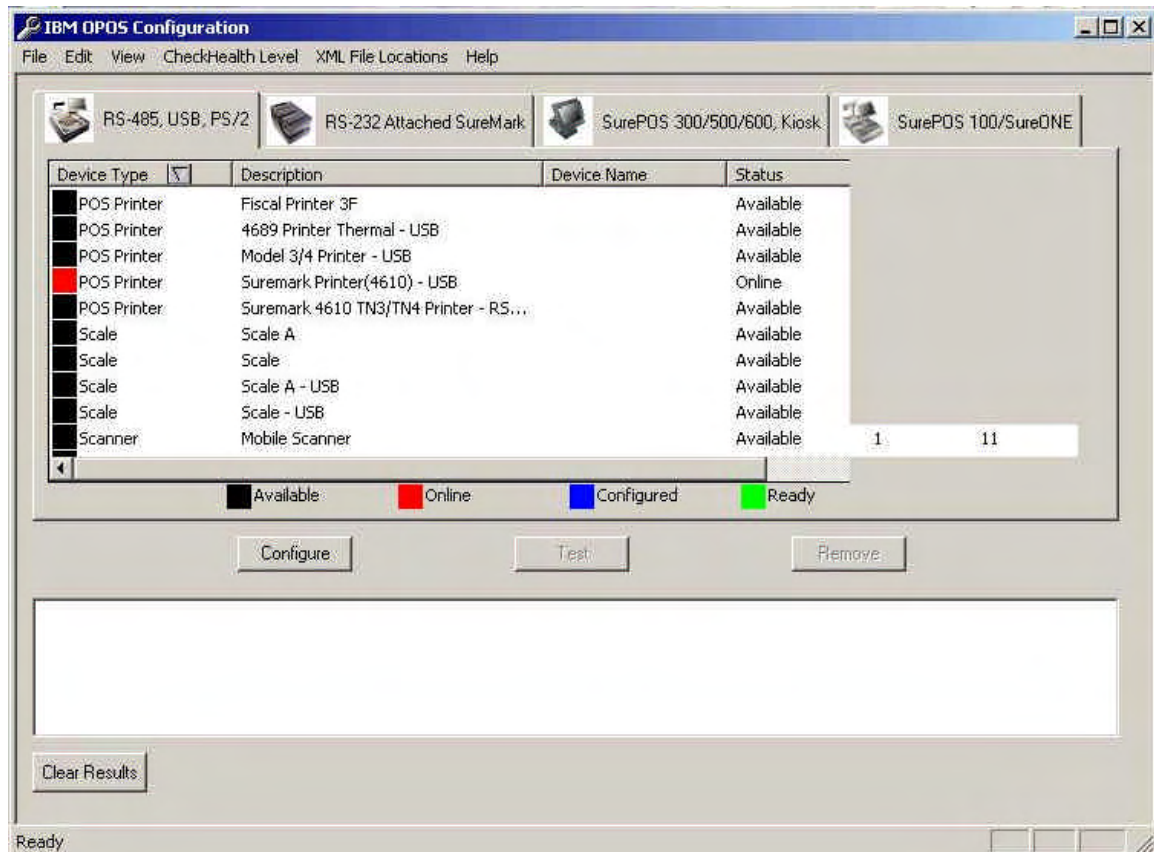


Figure 17: Initial OPOS Configuration Screen

Find the correct printer entry and highlight it. Click on Configure. A popup will display so you can name the printer. Accept the other defaults.

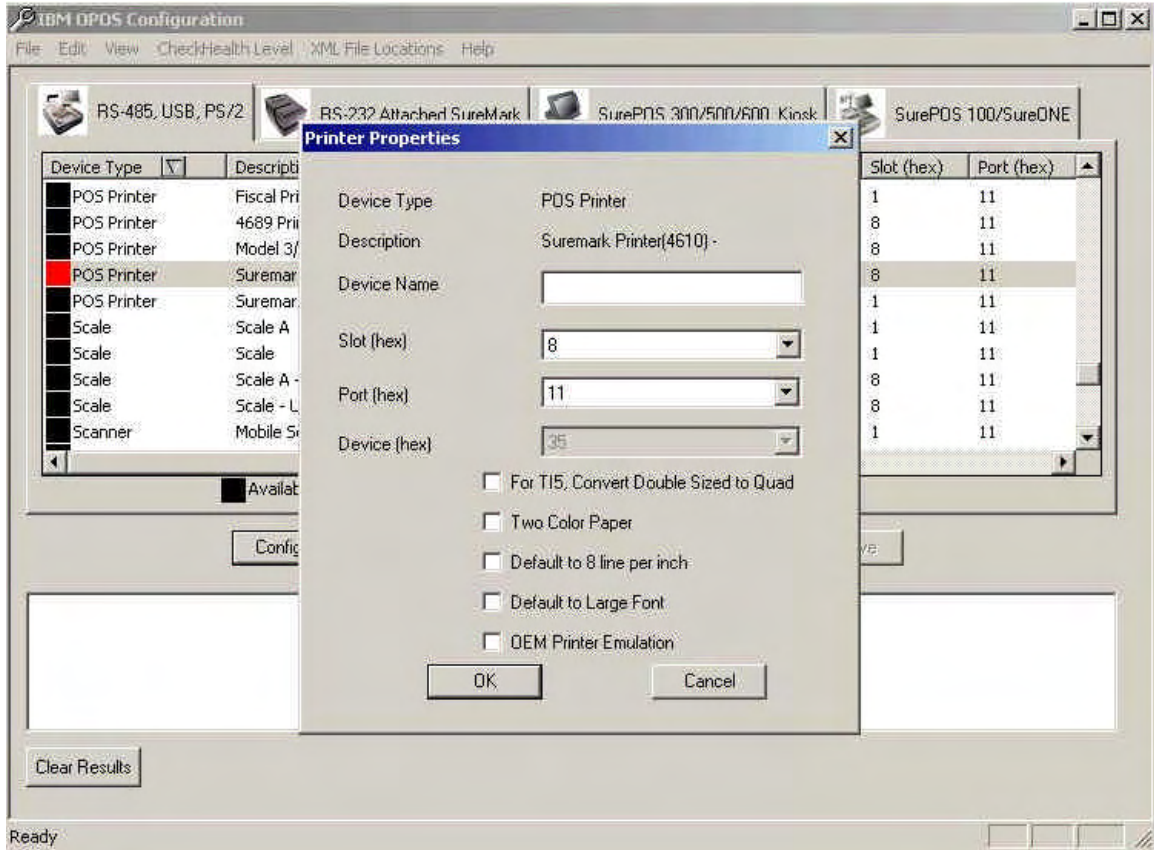


Figure 18: Configuring the Printer under the USB Tab

Type the name of the printer as seen below and click OK.

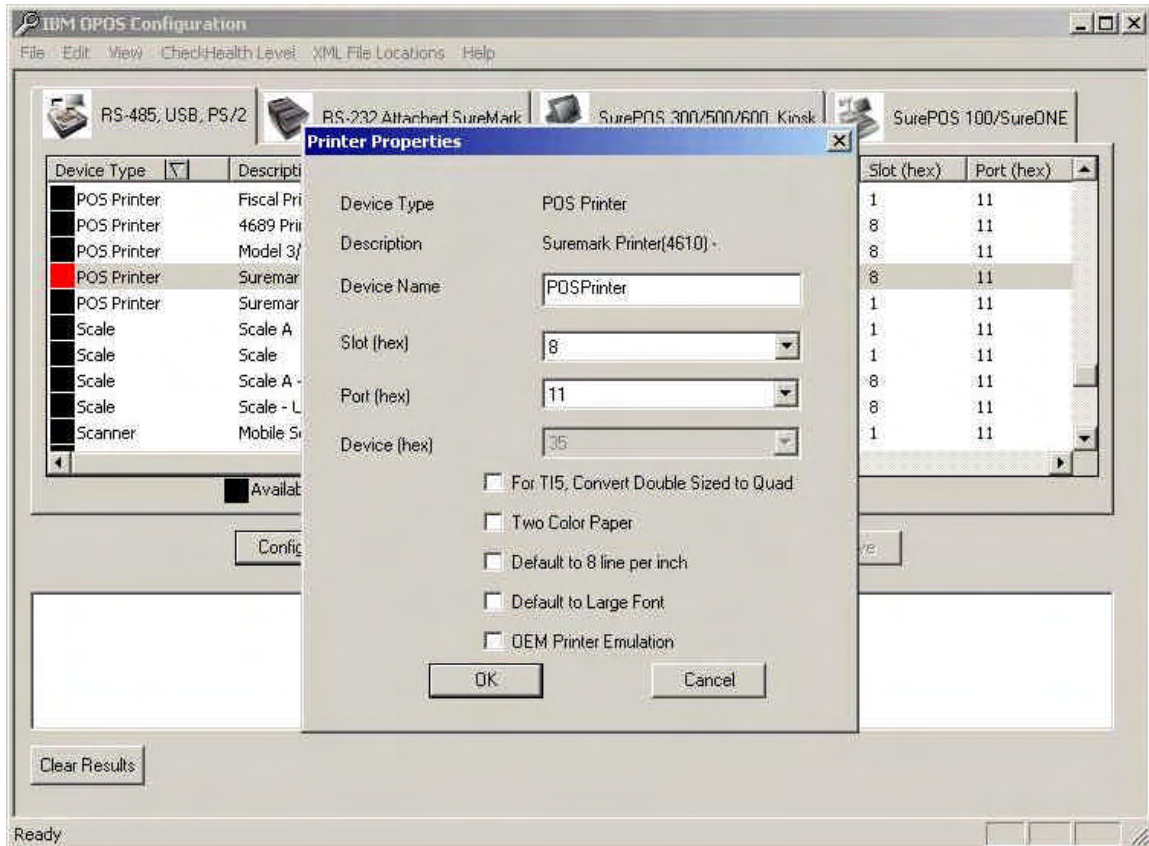


Figure 19: Naming the Printer

The configured printer will show up on the list and in Blue.

Highlight the MICR entry associated with the printer. The naming popup will show again.

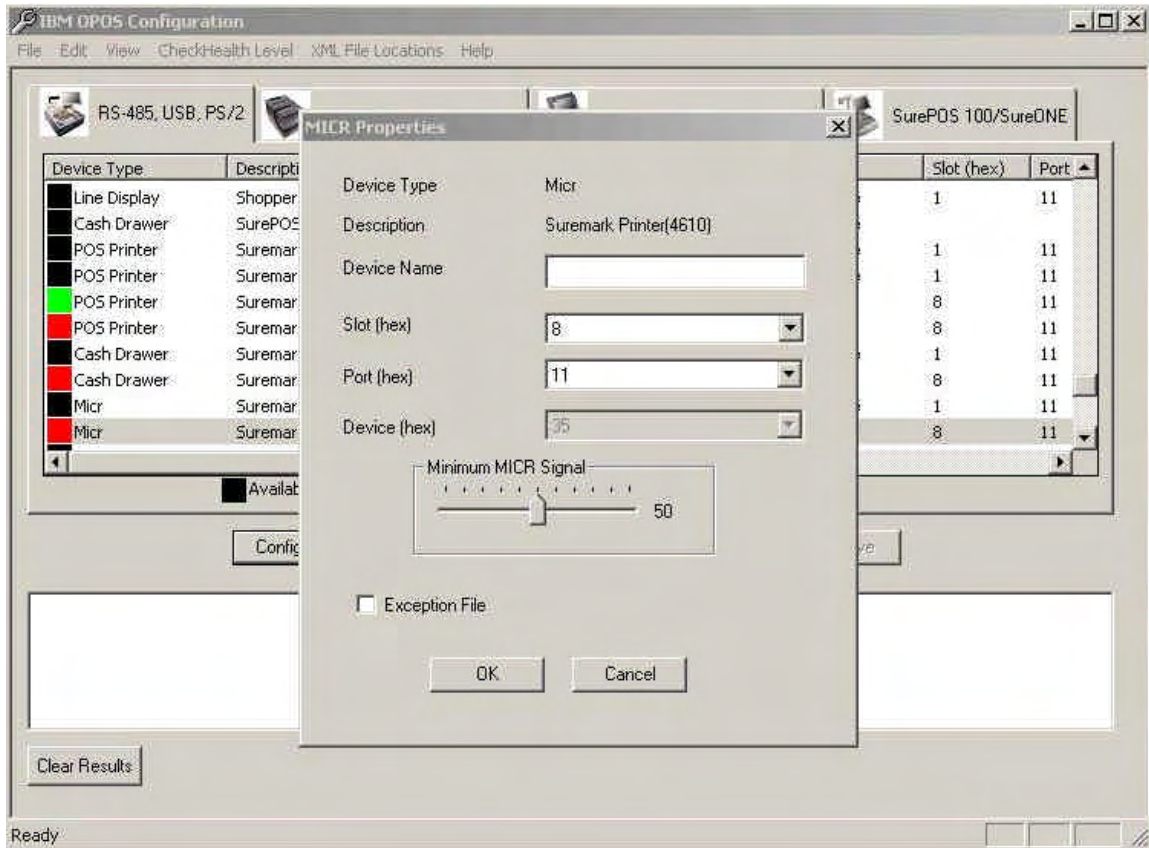


Figure 20: Configuring the MICR

Name the printer and check the checkbox Exception File, then click on OK.

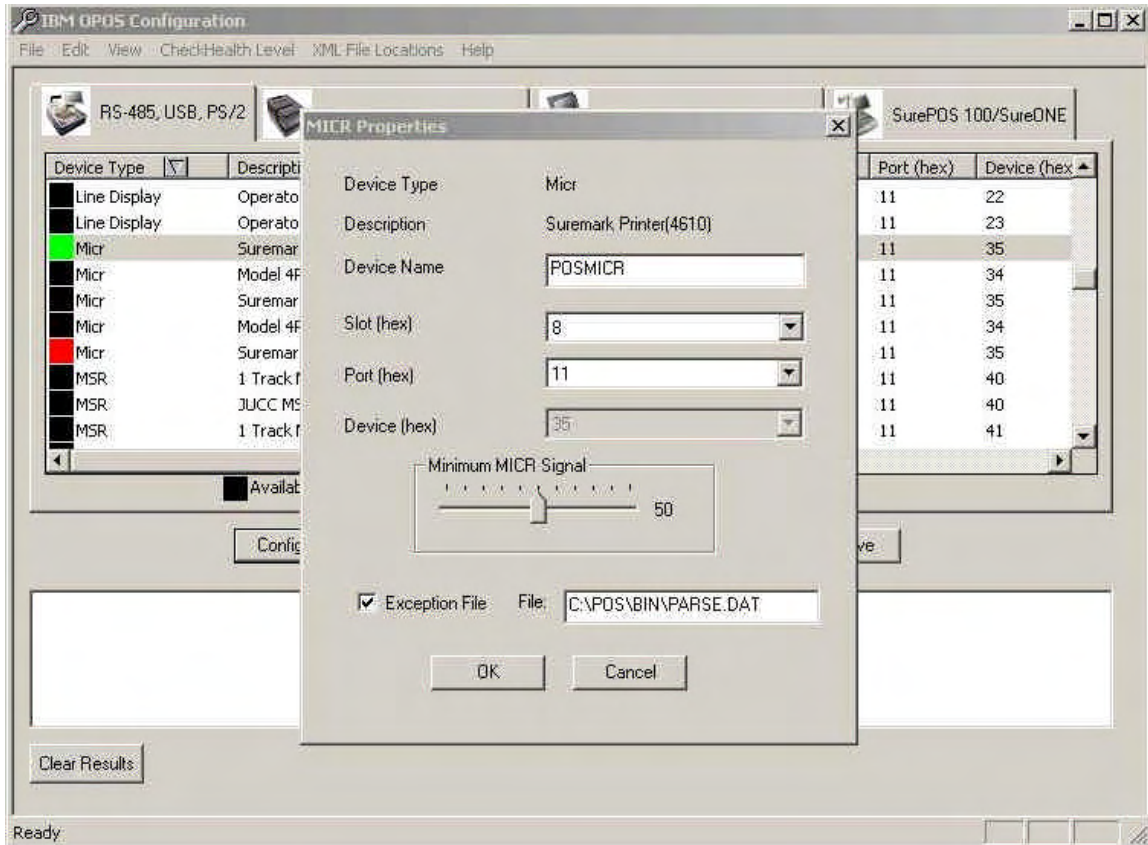
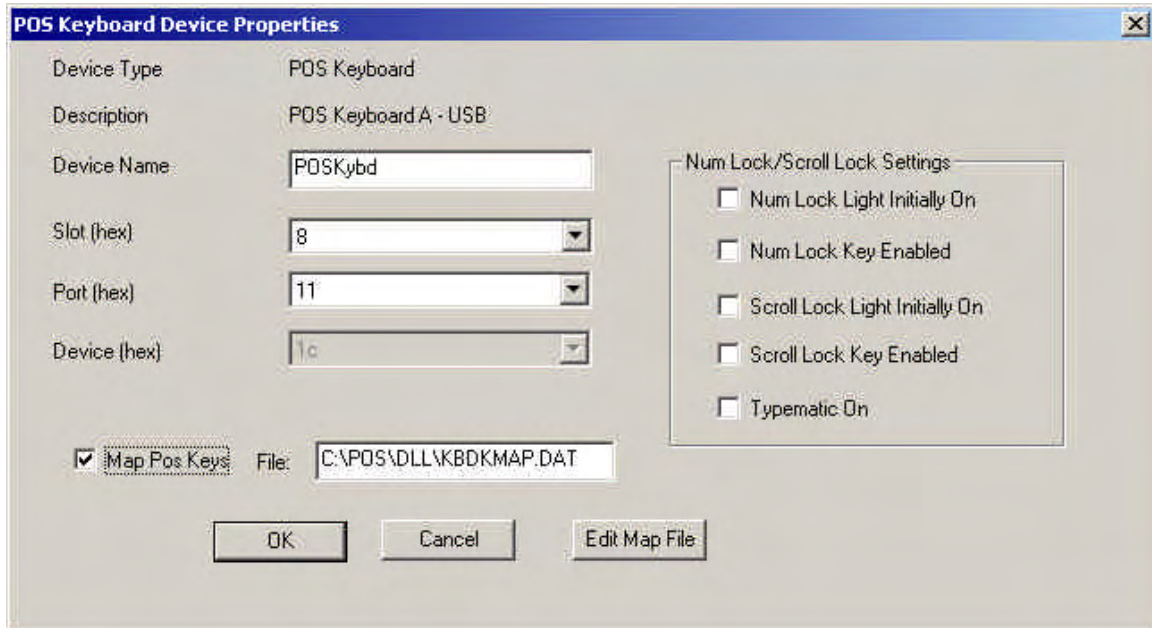


Figure 21: Naming the MICR

Click on the entry labeled POS Keyboard – A USB to configure the 50-Key Keyboard. **Enter Device Name POSKybd. Check the Map Pos Keys checkbox. Click OK.**



The screenshot shows the "POS Keyboard Device Properties" dialog box. The "Device Type" is "POS Keyboard" and the "Description" is "POS Keyboard A - USB". The "Device Name" is "POSKybd". The "Slot (hex)" is "8", "Port (hex)" is "11", and "Device (hex)" is "1c". The "Map Pos Keys" checkbox is checked, and the "File" is "C:\POS\DLL\KBDKMAP.DAT". The "Num Lock/Scroll Lock Settings" section contains five unchecked checkboxes: "Num Lock Light Initially On", "Num Lock Key Enabled", "Scroll Lock Light Initially On", "Scroll Lock Key Enabled", and "Typematic On". The "OK", "Cancel", and "Edit Map File" buttons are at the bottom.

Device Type	POS Keyboard
Description	POS Keyboard A - USB
Device Name	POSKybd
Slot (hex)	8
Port (hex)	11
Device (hex)	1c
<input checked="" type="checkbox"/> Map Pos Keys	File: C:\POS\DLL\KBDKMAP.DAT
Num Lock/Scroll Lock Settings	
<input type="checkbox"/> Num Lock Light Initially On	
<input type="checkbox"/> Num Lock Key Enabled	
<input type="checkbox"/> Scroll Lock Light Initially On	
<input type="checkbox"/> Scroll Lock Key Enabled	
<input type="checkbox"/> Typematic On	

Figure 22: Configuring the 50-Key Keyboard

Select the entry labeled SurePOS 700 Cash Drawer and click on Configure. The naming popup will appear.

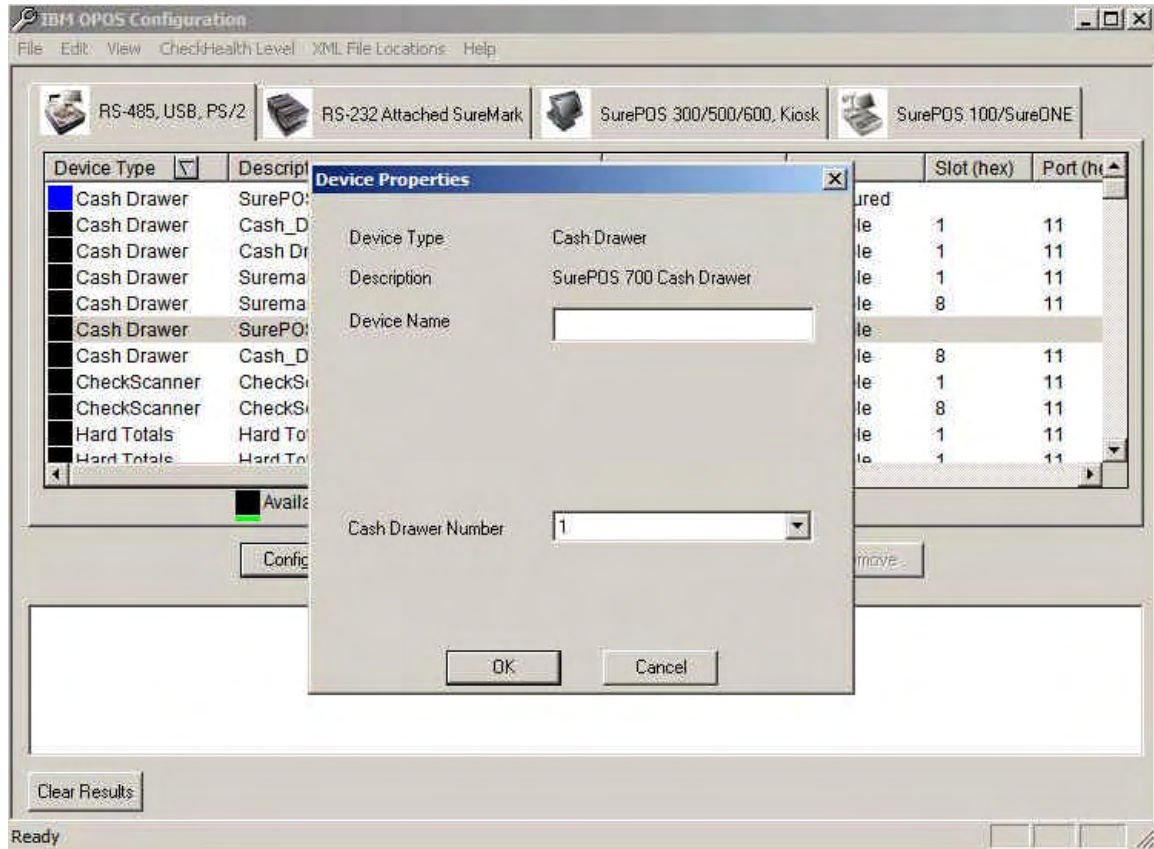


Figure 23: Configuring the Cash Drawer

Name the drawer as noted here and click on OK.

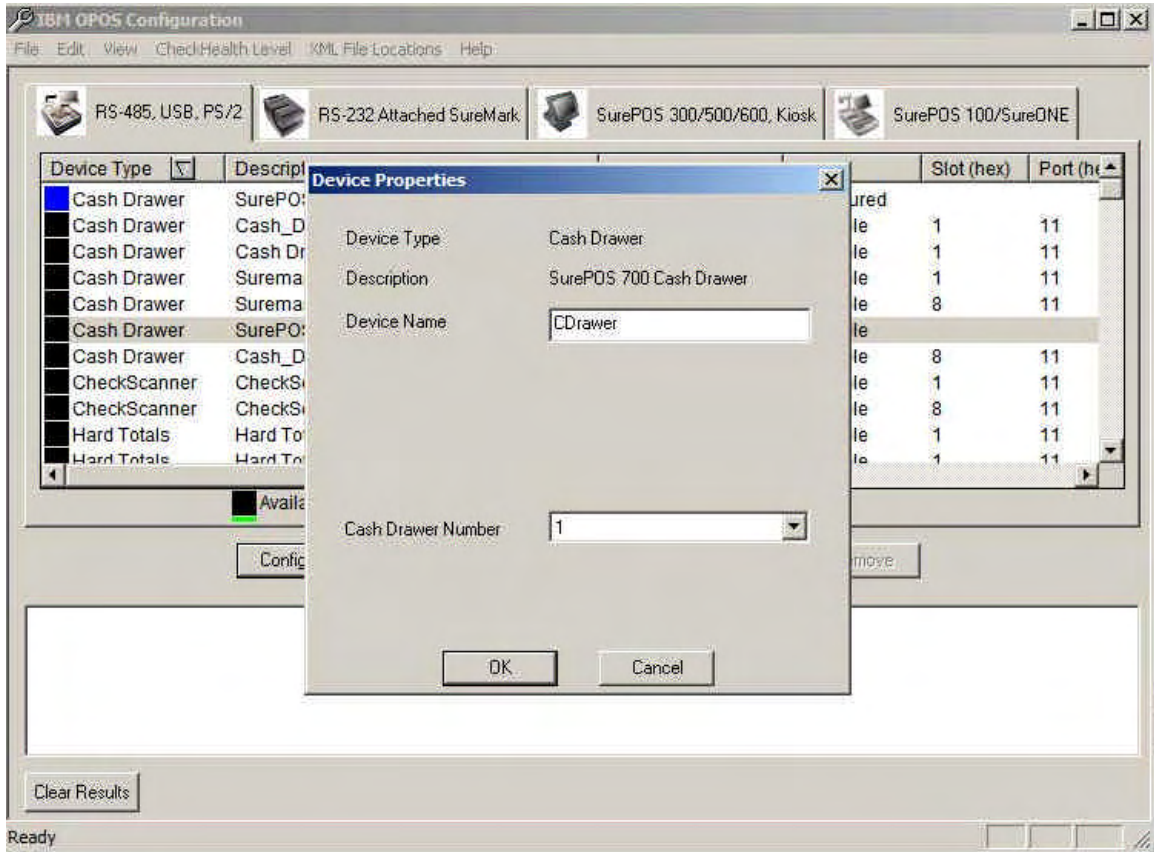


Figure 24: Naming the Cash Drawer

Click on the entry identified as the Line Display. The naming popup will appear.

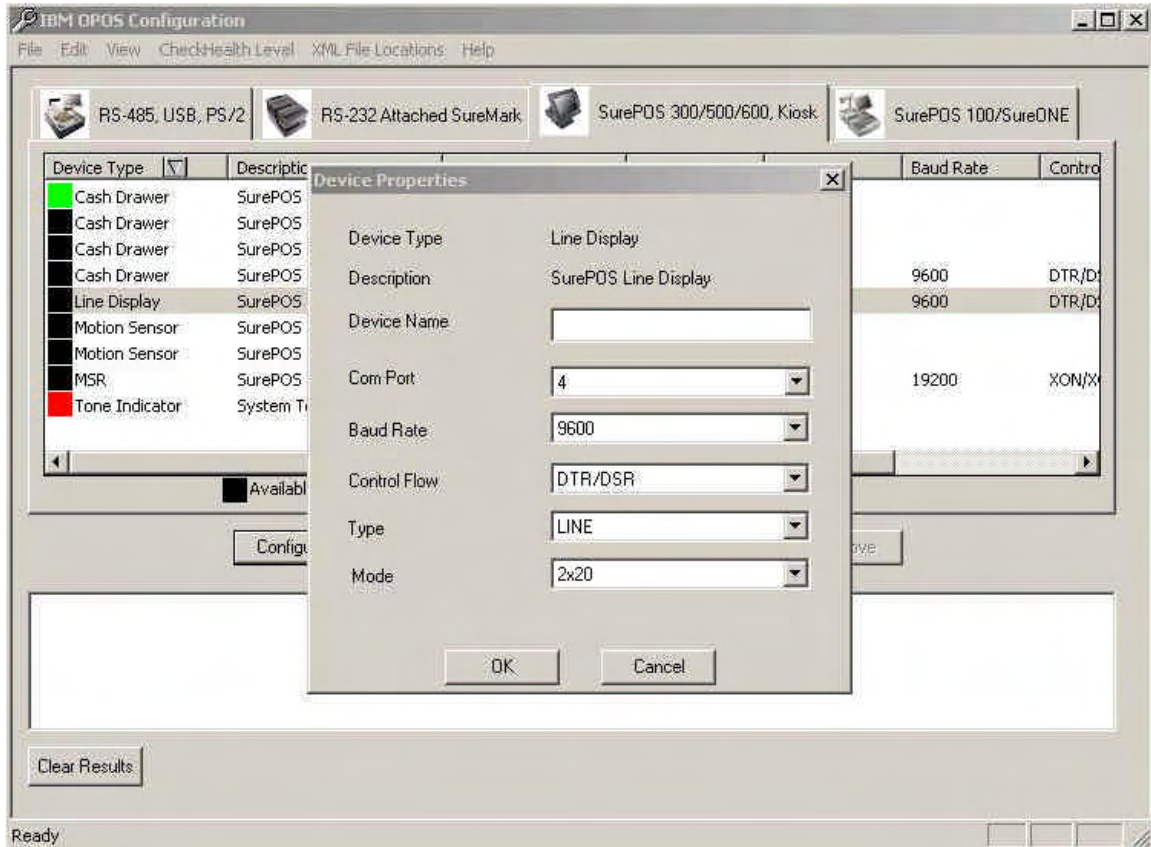


Figure 25: Configuring the Line Display

Switch to the “SurePOS 300/500/600, Kiosk” TAB. Name the Line Display as indicated here and make sure you change the COM port to COM 3. It is defaulted to COM 4.

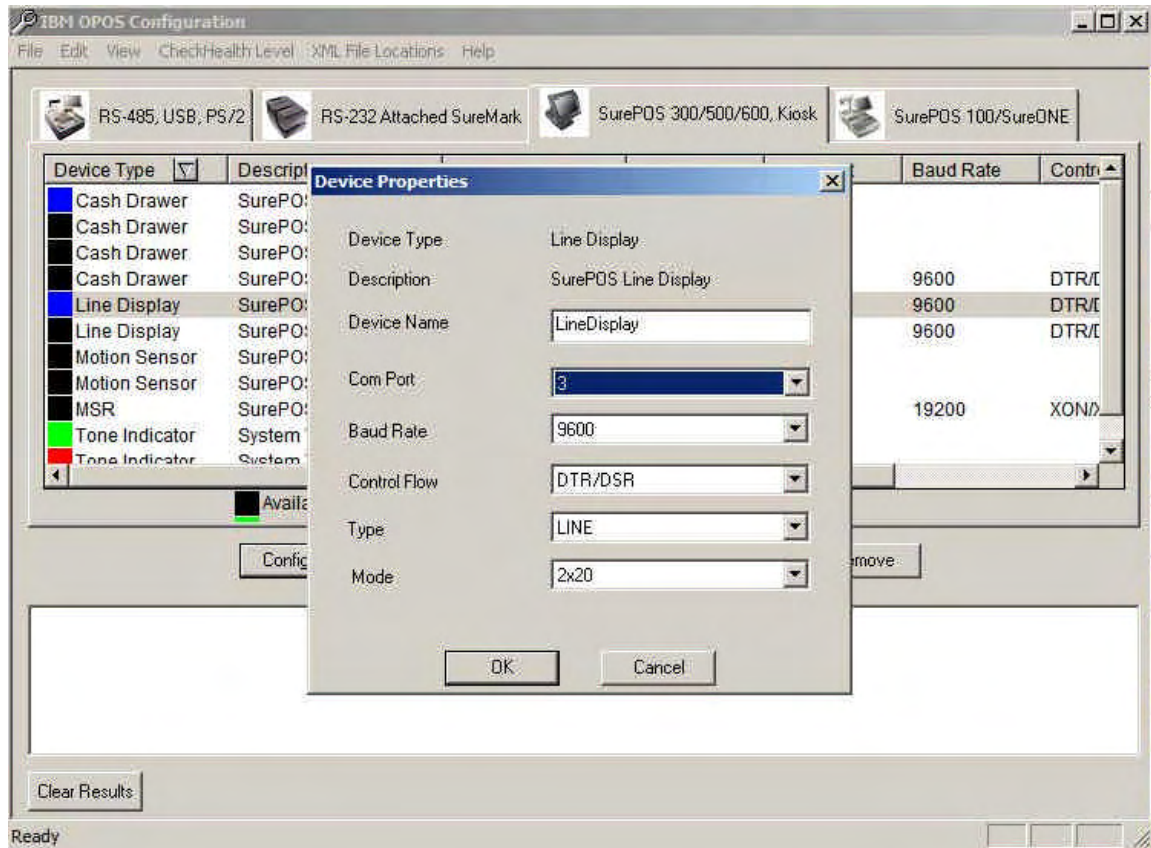


Figure 26: Naming the Line Display

Click on the item identified as the Tone Indicator and then click on Configure. The naming popup will appear.

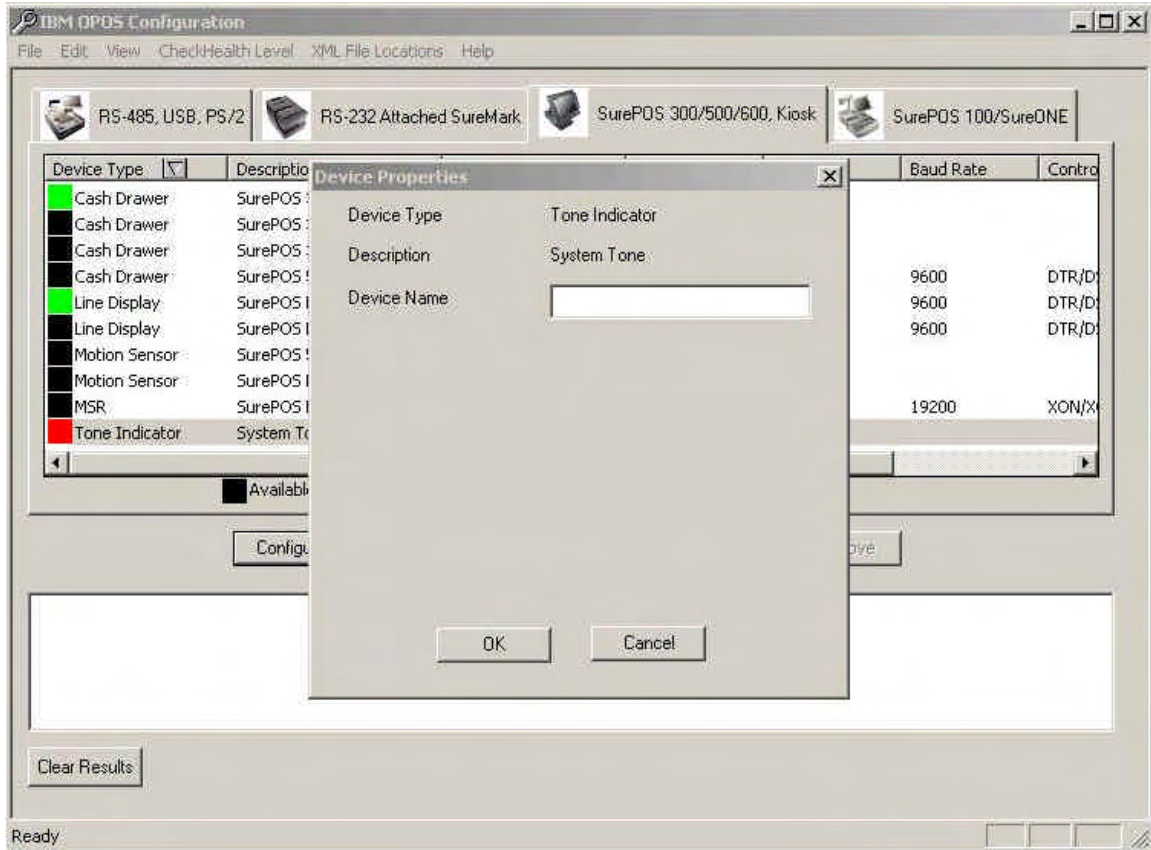


Figure 27: Configuring the System Tone

Name the System Tone entry as identified below and click on OK.

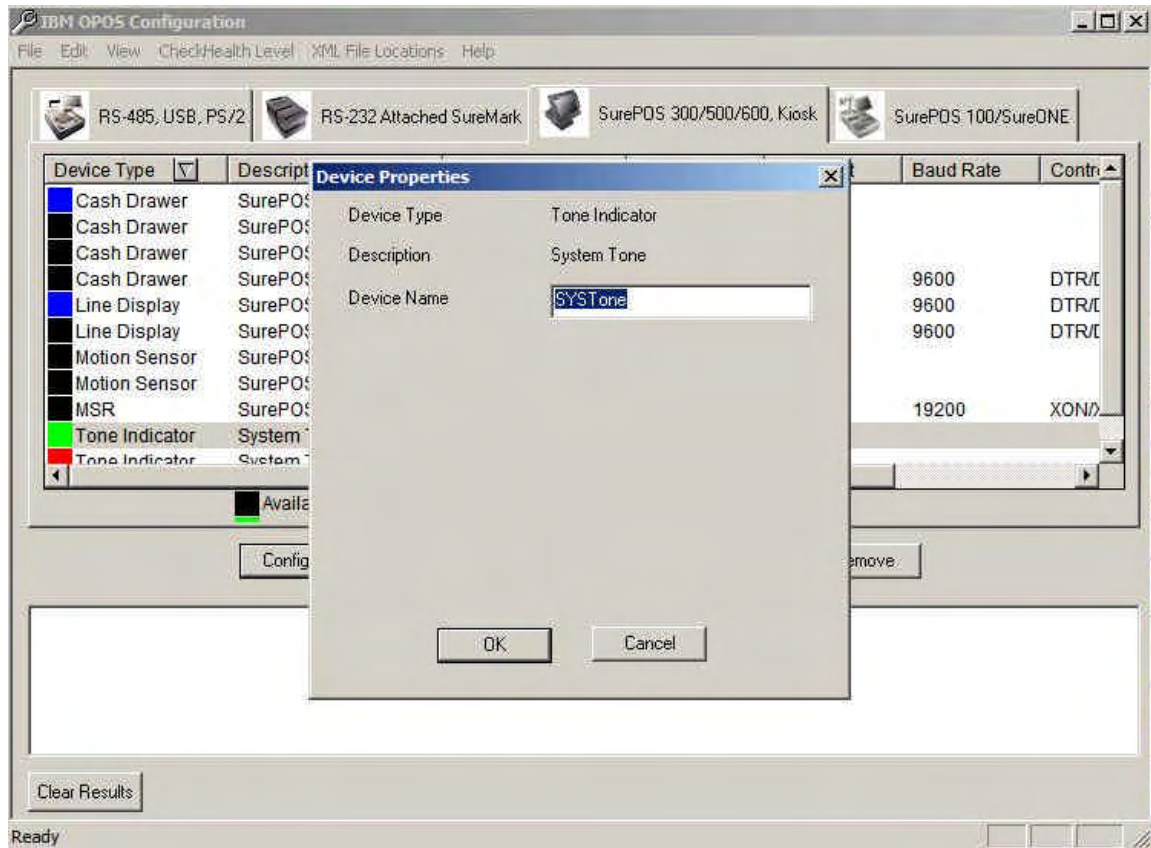


Figure 28: Naming the System Tone

At this point OPOS is completely configured for the IBM devices that are attached. Reboot the system. During the reboot, after the Windows Desktop appears a message may be displayed, indicating the printer firmware is being updated. If this message does appear, both lights on the printer will flash together. Please follow the instructions in this message and DO NOT interrupt the update. When it is complete the message will disappear and the printer will reset. The message that appears is:



Figure 29: Firmware Being Updated at Boot Time


Pervasive Installation

Installing Pervasive Workstation Engine

This installation assumes you have a CD-ROM Drive in the PoS Workstation. If you do not, you can run the installation over the network using the server's CD ROM Drive.

1. At the back office workstation, insert the CD labeled v8.6/v9.5 /v10.x Workgroup Engine into the CD-ROM drive.

Note: If the Autorun program starts, for v10.x select Workgroup Edition (32 bit) and skip to step 10.

2. Press the Start  key on the keyboard.
3. Press <R> for Run.
4. Press <ALT> for Browse.
5. Press <ALT><I> for Look In.
6. Press the Arrow Down key and highlight the CD-ROM drive on the server and press **Enter**.
7. Press the Tab key until the first folder on the CD is highlighted.
8. Press the Arrow Down key, highlight **Setup** and press **Enter**.

Note: For v10.x, double-click on SetupWorkgroupx486 in the workgroup folder.

9. Press **Enter** for **OK** to run Setup installation wizard.

The Welcome screen appears.

10. Press **Enter** for **Next**.

The Software License Agreement Displays.

11. Read the agreement and click "I accept...." Or press <Alt><A> then press **Enter** for Next.

Note: You may also use the up and down arrow keys.

12. If prompted select "Run as application" and click **Next**.

The Setup Type Screen Displays.

13. Accept **Complete** and press **Enter** for **Next**.

The Verification Window displays.

14. Review the information and press **Enter** for **Install**.

After Setup has completed copying files and starting services, the Setup Complete window displays.

15. Press **Enter** for **Finish**.

The HTML help window displays with links to the Pervasive web site. After closing this window, the Transactional Engine Test screen appears (within a few seconds).

For v10.x- After HTML help window displays. The JAVA™ 6 Update 5 will start to install. Click OK after prompted that the installation was successful. If a Message appears to Restart, select YES to Restart system. Since Pervasive v10.x does not automatically run the System Analyzer this should be done to verify connection. Launch Pervasive System Analyzer from Programs menu. The Welcome to System Analyzer Wizard displays. Click Next. The System Analyzer Options displays. Click Test Active Installation and click Next. Target Network Communication displays. Type Target Machine name of Server and click Next. Upon Successful Network communication message click Next. Test Transactional Engine displays. Click Next. Verify test was successful and click Next. Test Relational Engine displays click Next. Verify Test was successful and click Next and Finish. If these test were not successful this MUST be resolved before installing ScanMaster otherwise Pervasive v10.x is now installed and operational. Skip to step 21.

16. Press **Enter** for **Next**.

The Test Results will appear.

17. Press **Enter** for **Next**.

The Relational Engine Test Screen appears.

18. Press **Enter** for **Next**.

The Test Results will appear.

19. Press **Enter** for **Next**.

The Pervasive SQL9 SP2 Workgroup for Windows screen will display.

20. Press **Enter** for **Finish**.

Remove the Pervasive CD.

21. Click the **X** in the upper right hand corner to close out the HTML Help Window.

22. If Pervasive is being reinstalled or upgraded after ScanMaster is already installed, it will be necessary to manually run either C:**Grocery****V8Wrkstn.Reg** (if installing V8), C:**Grocery****V9Wrkstn.Reg** (if installing V9) or C:**Grocery****V10Wrkstn.Reg** (if installing V10). To do this, explore to <Def Drive>:\Grocery and double click on either V8Wrkstn.reg, V9Wrkstn.reg or V10Wrkstn.reg. This is true for both Back Office Workstations and POS Workstations.

23. Reboot the PC.

Note: If the POS is connected to a Vista Server and/or Vista Backoffice and is running Pervasive v9.5 you MUST follow the instructions under “**PERVASIVE v9.5 PATCH INSTRUCTIONS WHEN RUNNING VISTA BUSINESS.**”

Pervasive v9.5 Patch Instructions when running Vista Business

1. After Pervasive is installed, stop both Pervasive services or the Workgroup engine and insert the ScanMaster Installation CD.
2. Copy the oledb_ftf.9.52.zip file to C:\PVSW\Bin folder.
3. Extract the files from the zip file to the Bin folder and follow the instructions in the readme.txt. (Register listed files using Regsvr32)
4. Restart the Pervasive services or Workgroup engine.

Note: If Vista is running on any of the ScanMaster server or Back Office PCs, this MUST be done on all ScanMaster PCs including the POS terminals.

5. If a PC is using v9.5 Workgroup and is a Back Office workstation, the following fix must be run.
6. On the root of the ScanMaster install CD, double click the psqsvcsetup.zip file.
7. Double click on psqsvcsetup.exe
8. Click **NEXT** at the Welcome Screen.
9. At the Select Destination Location screen click **NEXT** (this assumes that Pervasive is installed in C:\PVSW, change this if that is not the correct location).
10. At the Select Service Account screen, select “This account” and enter .\Administrator in the Account Name field. Enter the Administrator password and confirm.
11. Click **NEXT**.
12. Click **INSTALL**.
13. Click **FINISH**.

This will cause the Pervasive Workgroup engine to load as a service instead of a tray application which is required to resolve a startup issue on Vista

Full Installation ScanMaster 2.07.00-050 For IBM SurePOS Workstation

Follow this procedure for all ScanMaster PoS Workstations. This section assumes that the prerequisite software has been installed and the ScanMaster server's shared drive has been mapped as drive F: on the PoS Workstation.

Note: Prior to installing ScanMaster copy all IBM Drivers and Installs from the StoreNext Website and place in C:\drivers on the IBM SurePOS register.

***All IBM Hardware, IBM OPOS and Drivers should be installed and loaded prior to the following instructions.**

Note: If using a PSC/Datalogic Scanning device, load Datalogic OPOS prior to ScanMaster. **For detailed instructions on installing Datalogic OPOS please refer to the "ScanMaster Datalogic OPOS 1.12 ScannerScale Devcies Install.PDF" on the ScanMaster 2.07.00-050 installation CD.**

Installing the IBM SurePOS install to the server

1. Insert the ScanMaster 2.07.00-050 CD into the Server's CD-ROM Drive.
2. From the Server Task Bar, click Start→ Run.

The Run Dialog Box Displays.

3. Click Browse and navigate to the 2.07.00-050 CD and Open the RegServInstall to install an IBM Register.
4. Click on Setup.exe. Click Open and click OK to launch the ScanMaster install procedure.

The 2.07.00-050 Installation Introduction Screen Displays

Please note that the register Installation Program for this install will install to LanDrive:\WinReg\Install

5. Click Next.

Installing the ScanMaster POS software to the IBM SurePOS terminal

On the IBM SurePOS terminal:

1. From the Task Bar on the POS, click Start → Run.

The Run Dialog Box Displays.

2. Click Browse.
3. Open the LanDrive:\WinReg\Install folder.
4. Click on Setup.exe. Click Open and click OK to launch the ScanMaster install procedure.

The POS Install Welcome Screen Displays.

5. Click Next

The register type selection screen displays

6. Select IBM

7. Click Next

The Setup Type Screen displays.

8. Click Next (New Installation)

The Register Number Screen displays.

9. Type in Register # and Click Next, Click Next

The Installation Completes.

After the files are copied, the ScanMaster MakeIBM window appears with a warning about COM Port settings.

Note: Make sure you do not use the same COM Port below for different devices. In addition, some of the field availability is dependent on other settings on the screen.

10. Press **Enter** for **OK** to clear the message.

Note: After each of the following steps (11 through 38), move to the next field and step by using the Tab or Enter keys. Move to the next “tab” by clicking on the appropriate tab with a mouse, or selecting the tab by holding down the ALT key and the appropriate hotkey for the tab.

11. Enter the Store Number.
12. Enter the 2-digit Workstation Number.
13. Enter the ScanMaster Server Name or accept the default.

Note: Select a specific Radio-button option without a mouse by using the up/down or left/right arrow keys. Once a selection is made, use the TAB button to move to the next step, or set of options.

14. Select whether to reboot the workstation after end-of-day processing. Change the selection by using the arrow keys, or selecting with the mouse.
15. Change to the “Devices” tab by holding down the ALT key and tapping the “D” key, or selecting with the mouse.

General	Devices	Payment/Loyalty System
Keyboards Keyboard Selection <input type="radio"/> IBM 50 Key <input checked="" type="radio"/> Full Touch	Scanner/Scale Setup Scanners <input type="radio"/> None <input type="radio"/> Fujitsu w/Magellan single cable emulation <input type="radio"/> Slim Scan 1200 or compatible <input type="radio"/> NCR 78xx Scanner <input type="radio"/> PSC MagellanSC - Serial <input type="radio"/> PSC Quick Scan - Serial <input checked="" type="radio"/> PSC Table Scanner/Scale - USB <input type="radio"/> PSC Hand Scanner - USB	Enter CID Mode if using CID <input type="radio"/> None <input type="radio"/> Mode 40 <input checked="" type="radio"/> Mode 80
Printer Setup Enable MICR Reader <input type="radio"/> No <input checked="" type="radio"/> Yes	COM Port Selection <input type="radio"/> 1 <input type="radio"/> 2	2X20 ATTACHED <input checked="" type="radio"/> No <input type="radio"/> Yes
MSR Installed? <input checked="" type="radio"/> No <input type="radio"/> Yes	Baud Rate <input type="radio"/> 2400 <input type="radio"/> 4800 <input type="radio"/> 9600	
<input type="button" value="Exit"/>		<input type="button" value="Save"/>

16. Select whether to enable MICR (Magnetic Ink Character Recognition) on the printer.
17. Select the workstation's keyboard type.
18. Select the type of Scanner/Scale being used.
19. If a scanner/scale other than "None" is selected then select the Scanner/Scale's COM Port.
20. If a scanner/scale other than "None" is selected then select the Scanner/Scale's Baud Rate.
21. Select the Customer Information Display (CID) mode being used (Mode 40 = 40 Columns, Mode 80 = 80 Columns).
22. Select the CID Screen Resolution.
23. Select whether a 2x20 Customer Display is attached.
24. Change to the "Payment System" tab by holding down the ALT key and tapping the "P" key, or selecting with the mouse.

25. Select the workstation's payment system.

If "None" is selected skip to step 29.

26. Select whether the payment terminal is attached.

27. Select the baud rate of the payment terminal.

28. Select the COM Port of the payment terminal.

29. Select whether an S&H Greenpoints System is attached.

If "S&H Terminal is set to "No" skip to step 35.

30. Select the Baud Rate for the S&H terminal.

31. Select the COM Port of the S&H terminal.

32. If XINETIX is used, select the version being used.

33. If XINETIX is used, select whether or not to set the Customer Level to 1.

34. If S&H Greenpoints TCP/IP Interface is attached **CLICK** on the box to Enable TCP/IP Interface.

- Enter the TCP/IP address to connect to the S&H GreenPoints server.
- Enter Port Address for the S&H GreenPoints server connection.

35. When finished, Click **Save** (or press <ALT><A>).

A message box displays saying “Are you sure you want to add the information ... to the registry?” may appear.

36. Press **Enter** for Yes.

A message box displays confirming that the information has been successfully entered into the registry may appear.

37. Press **Enter** for OK.

38. Click **Exit**.

The PoS workstation reboots.

THIS CONCLUDES THE POS WORKSTATION INSTALLATION SECTION. REPEAT THE ENTIRE SERIES OF STEPS FOR EACH POS WORKSTATION!!

Upgrading to ScanMaster 2.07.00-050 on the IBM SurePOS terminal

Installing the IBM SurePOS install to the server

1. Insert the ScanMaster 2.07.00-050 CD into the Server's CD-ROM Drive.
2. From the Server Task Bar, click Start→ Run.

The Run Dialog Box Displays.

3. Click Browse and navigate to the 2.07.00-050 CD and Open the RegServInstall to install an IBM Register.
4. Click on Setup.exe. Click Open and click OK to launch the ScanMaster install procedure.

The 2.07.00-050 Installation Introduction Screen Displays

Please note that the register Installation Program for this install will install to LanDrive:\WinReg\Install

5. Click Next.

On the IBM SurePOS terminal:

1. From the Task Bar on the POS, click Start → Run.

The Run Dialog Box Displays.

2. Click Browse.
3. Open the LanDrive:\WinReg\Install folder.
4. Click on Setup.exe. Click Open and click OK to launch the ScanMaster install procedure.

The POS Install Welcome Screen Displays.

5. Click Next

The register type selection screen displays

6. Select IBM

7. Click Next

The Setup Type Screen displays.

8. Click Next (Upgrade for 2.01.x or higher)

9. Click Next

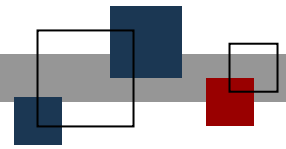
If hardware was changed, the Make program needs run. Would you like to run it now? Yes or No displays.

10. If YES, follow steps 10 through 38 on page 42.

If NO, Register reboots.

The Installation Completes

THIS CONCLUDES THE POS WORKSTATION UPGRADE SECTION. REPEAT THE ENTIRE SERIES OF STEPS FOR EACH POS WORKSTATION!!



© StoreNext Retail Technologies LLC 2010

StoreNext Retail Technologies LLC endeavors to ensure that the information in this document is correct and fairly stated but does not accept liability for any error or omission.

The development of StoreNext products and services is continuous and published information may not be up to date. It is important to check the current position with StoreNext. This document is not part of a contract or license save insofar as may be expressly agreed.