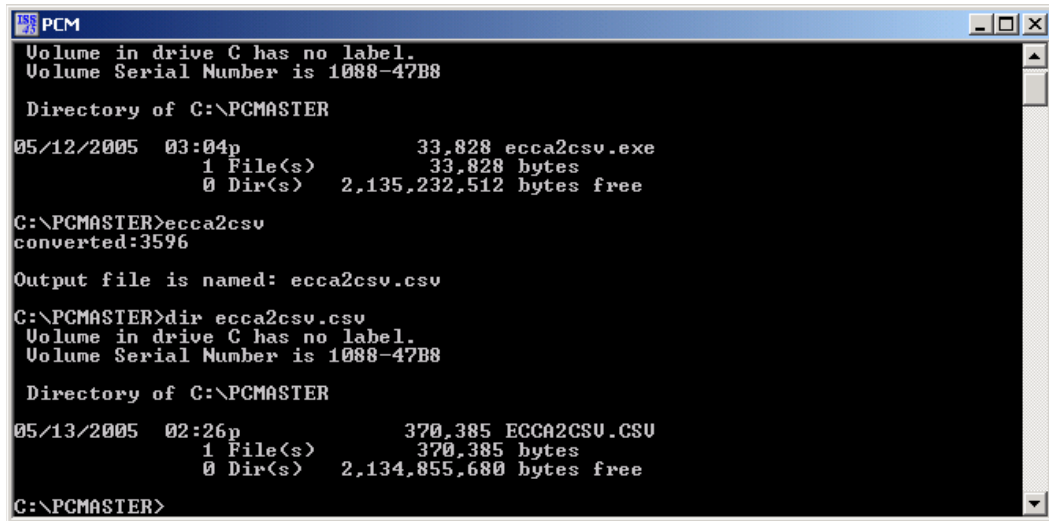


## V7 to V8 Conversion for ECCA

Utilities have been released to facilitate the transfer of ISS45 V7 data to an ISS45 V8 system. These utilities extracted the V7 data and put them into V8 batch files that could then be executed to load the data into SQL. The ECCA data was not converted as part of these utilities because ECCA does not have a batch format available. A new set of utilities have been written to assist with the conversion of ECCA data between these two systems; i.e. V7 to V8.

On the V7 system do the following:

- 1) Copy ECCA2CSV.EXE into the c:\pcmaster directory
- 2) Sign onto the V7 system and then exit to a DOS prompt (selection 5 at the main menu)
- 3) Key in ECCA2CSV and depress the ENTER key
- 4) Note that a “converted” count will be listed, write this down



```
PCM
Volume in drive C has no label.
Volume Serial Number is 1088-47B8

Directory of C:\PCMASTER
05/12/2005  03:04p                33,828 ecca2csv.exe
             1 File(s)                33,828 bytes
             0 Dir(s)  2,135,232,512 bytes free

C:\PCMASTER>eccA2csv
converted:3596

Output file is named: ecca2csv.csv

C:\PCMASTER>dir eccA2csv.csv
Volume in drive C has no label.
Volume Serial Number is 1088-47B8

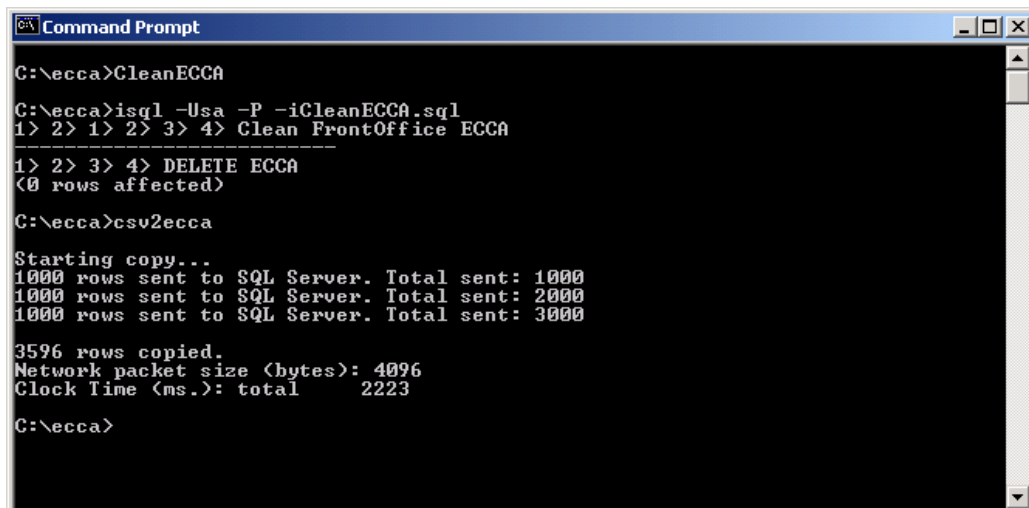
Directory of C:\PCMASTER
05/13/2005  02:26p                370,385 ECCA2CSU.CSU
             1 File(s)                370,385 bytes
             0 Dir(s)  2,134,855,680 bytes free

C:\PCMASTER>
```

- 5) Copy the file c:\pcmaster\ecca2csv.csv to a floppy or some other media to transport it to the V8 system
- 6) Go to screen 6-8-1, depress F1 and go to file 21 (ECCA), depress ENTER and write down the “Maximum record” size, the record size will be required on the V8 system

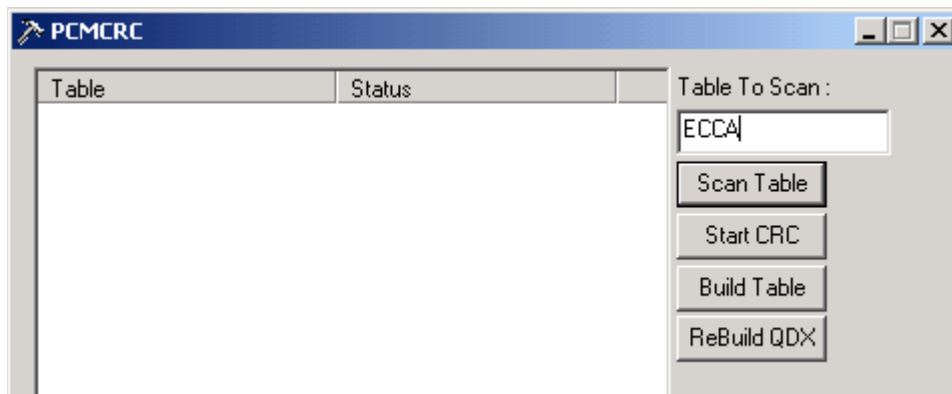
On the V8 system do the following:

- 1) Create a directory c:\ecca
- 2) Copy the following files into c:\ecca – CleanECCA.bat, CleanECCA.sql, csv2ecca.bat and the ECCA2CSV.CSV file from your V7 system
- 3) At a command prompt change directories to c:\ecca
- 4) Key in CleanECCA and depress the ENTER key (this will clear all data from the ECCA table in SQL)
- 5) Go to SYSTEM ADMINISTRATION| TECHNICAL SUPPORT| QUICKDEX DEFINITIONS, depress F1, go to file 21 (ECCA) and depress ENTER, check the “Maximum record” size, if the “Maximum record” size is not the same as or larger then the size you wrote down from the V7 system make the change **NOW** –
  - A) Use caution when moving within the QuickDex definitions, **ONLY** use the TAB key to change from one line to another
  - B) After making the file size change use the TAB key to move to the UPDATE button and save your changes
  - C) If a change to the ECCA file size was required exit ISS45, stop the Pos\_Srv\_Manager service and then start the Pos\_Srv\_Manager service (this will cause the ECCA file to be re-sized)
  - D) Restart the ISS45 application
- 6) At a command prompt change directories to c:\ecca, key in csv2ecca and depress the ENTER key (this will load the ECCA table in SQL), note the number of “rows” copied (this should be the same as the “converted” from the V7 system)

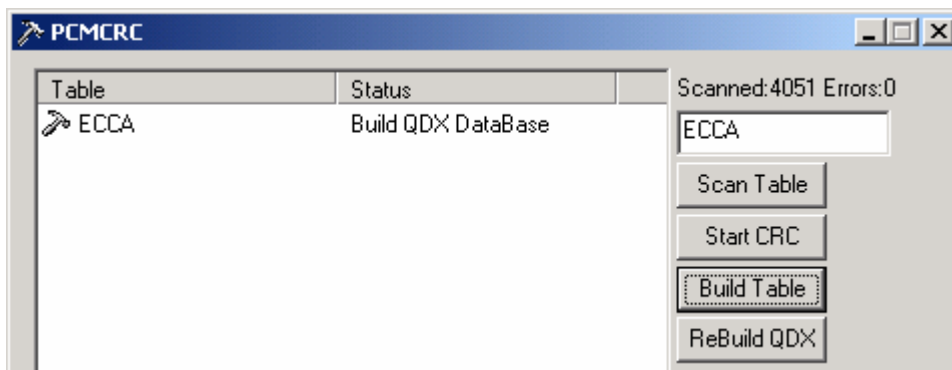


```
Command Prompt
C:\ecca>CleanECCA
C:\ecca>isql -Usa -P -iCleanECCA.sql
1> 2> 1> 2> 3> 4> Clean FrontOffice ECCA
-----
1> 2> 3> 4> DELETE ECCA
<0 rows affected>
C:\ecca>csv2ecca
Starting copy...
1000 rows sent to SQL Server. Total sent: 1000
1000 rows sent to SQL Server. Total sent: 2000
1000 rows sent to SQL Server. Total sent: 3000
3596 rows copied.
Network packet size (bytes): 4096
Clock Time (ms.): total      2223
C:\ecca>
```

- 7) In ISS45 go to DATABASE MANAGEMENT| ACCOUNTS| ECCA| ECCA ACCOUNTS and ECCA TEMPLATES and check the restored data is correct
- 8) At a DOS command prompt change directories to c:\program files\posware\office\components\exe
- 9) Key in PCMCRC /USECRCGUI /EXPERT and depress ENTER
- 10) In the box below “Table To Scan:”, in all upper case letters, key in ECCA and then click on the BUILD TABLE button



- 11) Click on YES and wait for the rebuild to be completed (the amount of time for the rebuild will vary from system to system depending on the size of your database)
- 12) When the build is done click OK and then check the upper right side of the window for errors



- 13) Click on the ‘x’ in the upper right corner of the window to close it
- 14) If you have registers attached to you system and wish to update the ECCA.QDX file do the following:

- A) In ISS45 go to SYSTEM ADMINISTRATION| TECHNICAL SUPPORT|  
SYSTEM INTEGRITY| LOAD/REFRESH QDX FILES TO POS
- B) On the “QDX Files List” tab click on file 21, ECCA
- C) On the “Maintenance” tab select “ALL TILLS” and then click APPLY