



-  *WinEPS Release Notes*
-  *Version 817 SP2*
- 
- 
- 



WinEPS Release Notes

Date of Issue	Product Identification Number	Part Number	Brief Description
June 2005	45001/096	89000235	815.3 Preliminary
July 2005	45001/096	89000248	815.3 Final Release
October 2005	45001/096	89000261	815.3 SP1
April 2006	45001/096	89000303	817 SP2

**© Copyright StoreNext Retail Technologies LLC 1995-2006
All rights reserved**

This publication is protected by federal copyright law. No part of this publication may be reproduced or transmitted into any human or computer language in any form or by any means, stored in a retrieval system, transmitted, redistributed, translated or disclosed to third parties, or de-compiled in any way including, but not limited to, photocopy, photograph, electronic, mechanical, magnetic or manual without the express written permission of StoreNext Retail Technologies LLC or its licensors, if any. This document, notwithstanding the above, may be distributed in electronic or printed form to personnel who are employed by either (1) a StoreNext customer of the subject system of this document or (2) personnel from an authorized StoreNext dealer of the subject system of this document. All copies, so distributed and/or so authorized, shall contain a full copy of this copyright notice.

StoreNext Retail Technologies LLC endeavors to ensure that the information in this document is correct and fairly stated but does not accept liability for any error or omission. StoreNext Retail Technologies LLC makes no representation or warranties with respect to the contents hereof, and specifically disclaims any implied warranties of merchantability or fitness for a particular purpose or non-infringement. No commitments by StoreNext or its suppliers are made from this documentation which is provided for information only.

Development of StoreNext products and documentation is continuous: StoreNext Retail Technologies LLC reserves the right to revise this publication and to make changes from time to time in the contents hereof or in the products herein described or discussed without notice and without any obligation of StoreNext Retail Technologies LLC to notify any person or organization of such revision or changes. Information published in this document will likely become obsolete over time and it is recommended that users regularly check for updates and newer versions.

StoreNext Retail Technologies LLC has prepared this manual for use by users, authorized third parties and personnel of StoreNext Retail Technologies LLC as a guide to the proper installation, operation, customization and/or maintenance of StoreNext Retail Technologies LLC equipment and software. The drawings and specifications contained herein are the property of StoreNext Retail Technologies LLC and/or its licensors.

Third-party products, services, or company names referenced in this document may be trademarked or copyrighted by their respective owners, and are for identification purposes only.

Copyrights, trademarks and license agreements shall be governed and construed in accordance with the laws of the State of Texas and the Federal Arbitration Act, and shall benefit Retailix, its successors, and assigns.

Address comments and corrections to:

StoreNext Retail Technologies LLC
Software Program Director
6100 Tennyson Parkway
Suite 130
Plano, Texas 75024

Table of Contents

SECTION 1	1
817.0 Information	1
Version Information.....	2
OpenEPS Versions:.....	2
SCAT Code Versions:.....	2
Stand Beside Code Versions:.....	2
Known Issues	3
Need to Set SmartWIC State Code	3
Windows 95 Offline Forwarding	4
New Specification for SmartWIC using the Omni 7000.....	5
Ingenico 2100 Lockup When Unplugged	6
2127 Code Selection	7
WinEPS Fixed Issues and Enhancements	8
OpenEPS Changes.....	14
OpenIP Changes.....	16
Host Changes	17
ACI	17
Albertsons	17
Ascendent	17
BioPay.....	18
Concord: EPC	18
Concord: H&C Format	18
Concord: Memphis	18
Credomatic.....	18
Demo.....	19
ePicTranz	19
GlobalPay	19
LML.....	20
Lynk.....	20
LX1, LX2, LX3 Hosts	20
Mainsail	21
MPS (Fifth Third).....	21
MTX Receipt Capture Host	21
NOVA.....	21
Paypoint	22
Pay by Touch	22
ServerEPS	22
Shared (BigY).....	23
SCAT Code Changes.....	24
C2000.....	24
eN-Crypt 2100	24
Everest	25
HYP4100	25
ICE5500.....	25
ICE6000.....	26
NCR 5993	26
Omni 490	26
Omni 7000	26
Stand Beside Code Changes	28
Omni 490	28
C2000.....	28



Everest	28
External Program Changes	29
Redundancy Service	29
Virtual Terminal	29
Host Simulator	29
UpdateFiles.Exe	30
OMNI 7000 Scanmaster Code	30
SECTION 2	31
New Features	31
New WinEPS GUI	31
Integrated Windowing	32
Deny Cashback on Manual Entry	33
Convert Soft Keys to Function Keys	35
Setting SmartWIC State Code	37
2127 Code Selection	38
New Terminal: eN-Crypt 2100	39
IBM Interface	40



Section 1

817.0 Information

This section covers changes, bug fixes, and enhancements to the 817.0 release of WinEPS. The items listed below are the changes made only since the previous release. Previous editions of the WinEPS Release Notes are located on the WinEPS installation CD, in the directory Documents/Old Release Notes, or contact WinEPS support for a copy.

Always read the Known Issues Section. The Known Issues Section covers important information on changes that occurred in this release. This section often includes work-arounds for known bugs, or necessary procedure changes

It is also highly recommended that the Section 2, New Features be browsed to familiarize the user with the new improvements and changes to WinEPS and methods of implementing those improvements.

The 817.0 Version is certified PCI Compliant. Refer to the WinEPS Users PCI Recommendations Guide for complete information of setting up a PCI compliant environment. The WinEPS Users PCI Recommendations Guide is located on the WinEPS installation CD in the Documents directory.

Version Information

OpenEPS Versions:

Module	Version	Date
mtx_eps.dll libmtx_eps.so	817.0.0.547	1/13/2006
mtx_pos.dll libmtx_pos.so	817.0.0.30	1/13/2006

SCAT Code Versions:

Type	Terminal	Version	Date
SCAT	C2000	32	1/5/2005
	eN-Crypt 2100	eN-Command v. 2.40	1/10/2006
	Everest	37	1/5/2005
	HYP 4100	105.0.0	2/8/2005
	ICE 5500	108	9/30/2005
	ICE 6000	108	9/30/2005
	NCR 5993	7	7/1/2005
	Omni 490	57	1/5/2005
	Omni 7000	35	9/30/2005

Stand Beside Code Versions:

Type	Terminal	Version	Date
Stand Beside	C2000	45	8/17/2004
	Everest	383	5/5/2005
	Omni 490	379	2/18/2005

Known Issues

Need to Set SmartWIC State Code

To support future development, a new dropdown box is available in the Terminal Configuration for selecting the SmartWIC state code. The available options include Texas-New Mexico.

Refer to Section 2, [Setting SmartWIC State Code](#) for instructions on selecting the state code.

[Related to WinEPS Fixed Issues and Enhancements #22](#)

[Full details on this feature are included in Section 2.](#)

Windows 95 Offline Forwarding

Due to PCI compliance, when running OpenEPS under Windows 95, offline transactions can no longer be forwarded up with the POS is signed off.

This only impacts users who have Windows 95 as the operating system for their POS lanes, and who also have Stand In at the POST enabled. For information on Stand In at the Post, refer to the WinEPS Users Guide, Chapter 10.

New Specification for SmartWIC using the Omni 7000

The methodology for SmartWIC communication with the Omni 7000 terminal has changed. The latest OpenEPS specification contains new function calls required for the new message format.

Contact MTXEPS Support for the latest OpenEPS specification.

[Related to SCAT Code Changes – Omni 7000 #2](#)

Ingenico 2100 Lockup When Unplugged

The Ingenico eN-Crypt 2100 is a new terminal that WinEPS supports. If the terminal is unplugged during any part of the transaction, it does not recover correctly and the transaction cannot be completed. The Ingenico OPOS controls do not support power-off recovery.

To reset the terminal, the current transaction must be voided (or suspended) and the cashier must sign off and then sign back on.

[Related to SCAT Code Changes – eN-Crypt 2100 #1](#)

2127 Code Selection

A new setting for the 2127 code has been created. Users who are running 2127 should set their WinEPS to the new setting as described in Section 2.

[Related to WinEPS Fixed Issues and Enhancements #28](#)

[Full details on this feature are included in Section 2.](#)

WinEPS Fixed Issues and Enhancements

Enhancement	Description
1. Enhanced sendmsg.exe journaling	<ul style="list-style-type: none"> Enhancement Sendmsg.exe commands are logged in the WinEPS Spool file with text notes on the action taken when the command is received.
2. Add logging to the WinEPS update program	<ul style="list-style-type: none"> Enhancement The update process now includes logging. When the update program is run independently from an installation, the command line option 'no terminate' displays the log information to the users screen.
3. RFID Support	<ul style="list-style-type: none"> Enhancement In addition to manual or swiped entry modes, RFID has been added. WinEPS is informed by OpenEPS when track data is provided by RFID instead of a card slide or manual entry. RFID is supported for both the HYC 4100 and the Omni 7000 terminals. Information on the track information entry method (RFID or Swipe) is passed along to the reporting module and hosts. Transactions initiated by RFID will be marked with an "R" in the WinEPS reports. On the WinEPS main screen, in the Info Messages section, transactions featuring the use of RFID will be marked with an "R"
4. Incorrect prompt during Installation	<ul style="list-style-type: none"> Fixed At the end of setup, the screen previously indicated that the user should remove disks from all drives, however, when the user removed the CD before reboot, they were prompted to re-insert the CD.
5. Service installation on Workgroup Fix	<ul style="list-style-type: none"> Enhancement Initial installations of WinEPS on machines that were part of a workgroup and not a domain had some difficulties. The issue has been corrected.
6. Deny cashback on manual entry	<ul style="list-style-type: none"> Enhancement An addition was made to the Card Processing Profiles whereby any card that offers cashback can be set to deny cashback if that card is manually entered. This is of primary use with Discover cards. Full details on this feature are included in Section 2.

Enhancement	Description
7. Card type not on Store Totals report was also not on approved transaction report	<ul style="list-style-type: none"> Fixed There was an issue where if a card type was configured not to show up on the Store Totals report, it would also fail to show up on the approved transaction report. This issue has been fixed.
8. Number of Offline Transactions is printed when host starts	<ul style="list-style-type: none"> Enhancement Each time WinEPS starts a host, the number of Offline Transactions that are pending (waiting to be sent up to the host) will be printed in the Trouble Messages section on the WinEPS GUI. Full details on this feature are included in Section 2.
9. Unavailable Terminal Configuration XML preventing lanes from starting	<ul style="list-style-type: none"> Fixed Previously, if a Terminal Configuration XML file that was in use by one or more lanes was renamed or removed, when WinEPS attempted to start the lanes, no lane would start. This has been corrected so that only the lane or lanes that actually use the missing configuration file do not start. The engine will check each individual lane's XML file before attempting to start that lane, if the XML is valid it will start the lane, if the XML is NOT valid it will note such in the spool01.eft and NOT start that lane.
10. ACH receives track from either card slide or MICR/Biometrics	<ul style="list-style-type: none"> Enhancement In the future, ACH transactions could be initiated by card read as well as MICR and Biometrics. To prevent future issues, if the 'Card Slide Required' property is not set for ACH, then only MICR and Biometrics are valid methods for entering track data. If the 'Card Slide Required' property is set, then only a card read will be accepted. The default is for Biometrics and MICR to be accepted.
11. Default configuration for Fastlane w/ NCR5993	<ul style="list-style-type: none"> Enhancement A default configuration file has been added; this default configuration is automatically available for selection with a new installation. For upgrades, the configuration file must be manually copied to the WinEPS server, if needed. It is located on the WinEPS installation disk in the Default Terminal Configs directory. Filename is: FastLane with NCR5993.xml
12. Velocity Decline information sent to Scanmaster	<ul style="list-style-type: none"> Enhancement When velocity decline information is received for a check, the first two lines of the velocity information is passed along to Scanmaster for display on the POS cashier screen.
13. Increase signature buffer to 1024 bytes	<ul style="list-style-type: none"> Enhancement The buffer size for serial messages from the SCAT terminal has been increased to 1024 bytes. Future SCAT code development will support higher resolution signatures.

Enhancement	Description
14. Updated Licensing Agreement	<ul style="list-style-type: none"> • Enhancement • New Licensing Agreement text and copyright information has been added to the WinEPS installation. • Though there is no physical change in installation procedure, it is highly recommended that the Licensing agreement be reviewed when presented onscreen.
15. For ACR, bit 62 will set UPC for GC and Phone Card	<ul style="list-style-type: none"> • Enhancement • For ACR, the Gift Card and Phone Card UPCs will be acquired from bit 62. Previously the UPC was acquired by parsing the track1 data, but that proved unreliable and has been removed.
16. GUI updated for Secure FTP information	<ul style="list-style-type: none"> • Enhancement • The WinEPS GUI has been updated for clarity when using the Secure FTP service. The secure FTP service is a sub-option of the FTP service checkbox. • Secure FTP must be utilized to maintain a PCI compliant environment. Refer to the PCI Compliance Document for complete information on PCI requirements and WinEPS setup.
17. New WinEPS GUI	<ul style="list-style-type: none"> • Enhancement • The WinEPS GUI has been redesigned for increased visibility, the addition of a quick button bar housing common tasks and self-contained windowing of configuration screens. • Full details on this feature are included in Section 2.
18. New Ohio EBT prefix	<ul style="list-style-type: none"> • Enhancement • The state of Ohio has implemented EBT cards with magnetic strips; this change allows these cards to function in the same way that other EBT cards do. To support these new cards, a new EBT card prefix has been added to WinEPS. • The Ohio EBT cards support both EBT Food and EBT cash, and have a prefix of 507700.
19. Option to remove text from softkeys on Omni 490, Everest and C2000	<ul style="list-style-type: none"> • Enhancement • The Omni 490, Everest and C2000 terminals all have configurable soft keys. WinEPS now allows the option to use those keys as function keys instead. • Many terminals already have templates that label the top keys, making the on-screen labeling redundant; this feature allows the user to turn off that redundant labeling, allowing more space on the screen for message printing. • Full details on this feature are included in Section 2.
20. Removed signature line from Customer Receipt	<ul style="list-style-type: none"> • Enhancement • No signature line is printed on the customer's copy of a receipt. • Only POS systems that utilize WinEPS receipts and do not possess their own receipt templates will be affected by this enhancement.

Enhancement	Description
21. IBM Interface	<ul style="list-style-type: none"> • Enhancement • WinEPS supports the IBM register software. • This newly developed interface to the IBM POS allows WinEPS to process transactions using its OpenEPS interface. • The WinEPS IBM interface supports: <ul style="list-style-type: none"> Standard WinEPS configuration options (such as user configurable prompts, and Credit to Debit conversion) All Standard Tender types (Credit, Debit, EBT, Gift Card, Check) 4100 terminals (only) Signature Capture • Full details on this feature are included in Section 2.
22. WIC State Code selection and WIC Prompts	<ul style="list-style-type: none"> • Enhancement • A new option has been added to the WinEPS GUI to allow the selection of the WIC State Code. This option is located under the Terminal Configuration Miscellaneous tab) • Currently, only Texas/New Mexico is supported; other support will be added in the future. • Additionally, configurable WIC prompts have been added to the Terminal Configuration Mics. Prompts Tab. • Full details on this feature are included in Section 2.
23. Receipt XML file created at EOD is 0 byte	<ul style="list-style-type: none"> • Fixed • During any day in which WinEPS receives no transactions, the Receipt XML file was being written without the header information. This has been corrected so that the Receipt XML file always contains the header information.
24. Card Prefixes converted to XML	<ul style="list-style-type: none"> • Enhancement • The card prefix table has been converted from a proprietary database format to XML format.
25. ACH Voucher renamed to Force	<ul style="list-style-type: none"> • Enhancement • For clarity, ACH Voucher has been renamed to ACH Force on the Terminal Configuration Tender Configuration screen.
26. No longer creating intermediate text file when printing reports	<ul style="list-style-type: none"> • Enhancement • Previously, when printing WinEPS reports, an intermediate text file was created containing the report to be printed. This operation is no longer performed, instead reports are created in memory and printed directly.

Enhancement	Description
27. POS not getting Signature Capture bit	<ul style="list-style-type: none"> • Fixed • Due to adjustment of the startup sequence for OpenEPS, the bit that was set indicating that Signature Capture is available was not set until later. This adjustment in timing prevented some POS systems from picking up the bit setting. • The bit setting has been moved to very near the beginning of the start up sequence for OpenEPS, allowing POS systems to acquire the setting as early as they needed to.
28. 2127 Stand Beside Code Selection	<ul style="list-style-type: none"> • Enhancement • A new setting for the 2127 is now available in the Processing Options Payment Terminal Setting tab: 490 – DUKPT: NCR2127 Integration V490D 2127 • This setting is for use with the 2127 integration. The stand beside code for the 2127 system is not currently undergoing any changes, and has been broken off from other stand beside code. • Full details on this feature are included in Section 2.
29. New format for the MTX ERC Host Screen	<ul style="list-style-type: none"> • Enhancement • The MTX Receipt Host screen was modified slightly. The section where the IP address was placed is now entitled Receipt File FTP for clarity.
30. Custom FTP setting hidden when not selected	<ul style="list-style-type: none"> • Enhancement • For the MTX Receipt Host, the Customer FTP settings are no longer shown unless Custom FTP is selected.
31. IBM COM port option in Terminal Configuration	<ul style="list-style-type: none"> • Enhancement • The IBM type has been added to the COM port selection drop down list on the Terminal Configuration Pin Pad Configuration screen.
32. Low Cost Smart WIC package for Omni 7000	<ul style="list-style-type: none"> • Enhancement • A Low cost Smart WIC solution installation package has been created for the Omni 7000. • This installation is located on the WinEPS installation CD in the Low Cost Smart WIC Packages directory.

Enhancement	Description
33. Invalid Card Type Prompt for the / TAC	<ul style="list-style-type: none"> • Enhancement • A new property has been added to the Auto Tender Type TAC. The Invalid Card Type Prompt allows the user to configure the text for the message displayed when a tender type is selected that doesn't match the card type that is slid. • Default text: Invalid Card Type
34. IBM Default Terminal Configuration	<ul style="list-style-type: none"> • Enhancement • A new default configuration file for the IBM interface using the HYC 4100 terminal has been included in new WinEPS installations. • File Name: IBM with 4100.xml
35. Failed Credit to debit not reported corrected	<ul style="list-style-type: none"> • Fixed • Fixed a reporting issue on failed Credit to Debit Conversion transactions. Previously on a failed Credit to Debit transaction the subsequent approval of the credit transaction was not being reported under Approved Transactions.
36. Always print signature line when offline	<ul style="list-style-type: none"> • Fixed • When performing stand in processing due to being offline to the host, the option to not print signature line for transactions under a certain dollar amount is ignored, and the signature line is always printed.
37. Truncation error	<ul style="list-style-type: none"> • Fixed • There was an error with the CVV2 print routine not being properly initialized. This caused the next message after the CVV2 to be truncated.
38. Terminal Configuration screen update: New Terminal eN-Crypt 2100	<ul style="list-style-type: none"> • Enhancement • The terminal configuration screen for the eN-Crypt 2100 terminal has been modified to add the listing and selection button for screen files.
39. Creating TORs on lane disconnect	<ul style="list-style-type: none"> • Fixed • Previously, when a lane disconnected while a transaction was waiting for a response from the host, the transaction was marked invalid and late responses from the host were dropped. This had the potential of causing double charges. This has been corrected to create TORs for any transaction that was being processed when the lane disconnects.

OpenEPS Changes

Enhancement	Description
1. RFID support in OpenEPS	<ul style="list-style-type: none"> • Enhancement • In addition to manual or swiped entry modes, RFID has been added. WinEPS is informed by OpenEPS when track data is provided by RFID instead of a card slide or manual entry. • RFID bit is sent to WinEPS in bit 62, FID 'c'.
2. Enhance Void logic in OpenEPS	<ul style="list-style-type: none"> • Enhancement • When a void by sequence number is performed, a check is made against the sequence number of the previous transaction. If the sequence number indicates that the void is for the previous transaction, the information for that transaction is drawn from memory and the void is performed as a void last.
3. Not Re-Prompting for Cash Back	<ul style="list-style-type: none"> • Fixed • When the L – Customer OK Amount was used, and the customer selects No, the customer was not re-prompted for the cash back amount.
4. OpenEPS adds registry entries for eN-Crypt 2100	<ul style="list-style-type: none"> • Enhancement • For the eN-Crypt 2100 terminal to function properly several Windows Registry keys must be present on the POS lane. OpenEPS has been updated to automatically add the required registry settings when the eN-Crypt 2100 is defined.
5. Lanes not switching from Primary to Backup server	<ul style="list-style-type: none"> • Fixed • When using Redundancy Service, lanes were failing to transfer from the Primary Server to the Backup server properly. This was a bug with OpenEPS.
6. IBM Interface	<ul style="list-style-type: none"> • Enhancement • WinEPS supports the IBM register software. • This newly developed interface to the IBM POS allows WinEPS to process transactions using its OpenEPS interface. • The WinEPS IBM interface supports: <ul style="list-style-type: none"> Standard WinEPS configuration options (such as user configurable prompts, and Credit to Debit conversion) All Standard Tender types (Credit, Debit, EBT, Gift Card, Check) 4100 terminals (only) Signature Capture • Full details on this feature are included in Section 2

Enhancement	Description
<p>7. Card Prefixes converted to XML</p>	<ul style="list-style-type: none"> • Enhancement • The card prefix table has been converted from a proprietary database format to XML format. • The new XML format file is: Prefix.xml • The following files were removed" <ul style="list-style-type: none"> CCARDPFX.eft ACARDPFX.eft PCCRDPFX.eft PDCRDPFX.eft PAUTHPFX.eft EBTFSPFX.eft EBTCAPFX.eft USER1PFX.eft PINCHPFX.eft USER2PFX.eft WLESSPFX.eft AchPFX.eft
<p>8. New SmartWIC Specification for Omni 7000</p>	<ul style="list-style-type: none"> • Enhancement • SmartWIC support has been added for the Omni 7000 terminal. • With the addition of the SmartWIC communication for the Omni 7000 terminal, the SmartWIC communication specification has changed. • For legacy purposes the old method of SmartWIC communication is still supported. The latest OpenEPS specification contains the new function calls required for the new message format. • Contact MTXEPS Support for the latest OpenEPS specification.

OpenIP Changes

Enhancement	Description
1. OpenIP last transaction data now stored in memory	<ul style="list-style-type: none">• Enhancement• For processing voids and TORs, OpenIP maintains a record of the last transaction processed by each lane. This record is now kept in memory and no longer written to a file.

Host Changes

—Change to All hosts—

Enhancement	Description
1. Fixed Duplicate Checking routine	<ul style="list-style-type: none"> • Fixed • The duplicate checking routine had developed a bug where one of the fields that were being checked for duplication (authorization code) was a field that was updated multiple times throughout the lifetime of the transaction, preventing a transaction from being marked as a duplicate even if the other fields matched. • To fix this issue, the authorization code field has been removed from the duplicate checking routine. The fix was located in a common file, necessitating the update of all hosts. • This impacted both online and offline duplicates.

ACI

Enhancement	Description
1. ACI Signature Capture	<ul style="list-style-type: none"> • Enhancement • The ACI host now accepts Signature Capture information. ACI utilizes the same format as MTX Receipt Host. • To use ACI as a signature capture host, select the ACI under the ERC (Electronic Receipt Capture) host selection in the Terminal Configuration.

Albertsons

Enhancement	Description
1. -No Change to Host -	<ul style="list-style-type: none"> • ---

Ascendent

Enhancement	Description
1. -No Change to Host -	<ul style="list-style-type: none"> • ---

BioPay

Enhancement	Description
1. -No Change to Host -	<ul style="list-style-type: none"> ---

Concord: EPC

Enhancement	Description
1. Change the "Concord Atlanta" host name to "Concord EPC"	<ul style="list-style-type: none"> Enhancement For clarity, the host formerly named 'Concord: Atlanta' has been renamed to 'Concord EPC'. EPC is how Concord internally refers to this particular host.
2. Send Zip code and Tax Amount	<ul style="list-style-type: none"> Enhancement When entered, the Tax amount and Zip Code are sent up to Concord. Zip code is typically entered only for fuel transactions.

Concord: H&C Format

Enhancement	Description
1. Send Zip Code and Tax Amount to Concord H&C	<ul style="list-style-type: none"> Enhancement When entered, the Tax amount and Zip Code are sent up to Concord. Zip code is typically entered only for fuel transactions.

Concord: Memphis

Enhancement	Description
1. -No Change to Host -	<ul style="list-style-type: none"> ---

Credomatic



Enhancement	Description
1. -No Change to Host -	• ---

Demo

Enhancement	Description
1. -No Change to Host -	• ---

ePicTranz

Enhancement	Description
1. -No Change to Host -	• ---

GlobalPay

Enhancement	Description
1. -No Change to Host -	• ---

LML

Enhancement	Description
1. LML Gift Cards	<ul style="list-style-type: none"> • Enhancement • Gift Cards are now supported for use with the LML host. • Supported Transactions: <ul style="list-style-type: none"> Activation Void Activation Purchase Void Purchase Return Void Return Recharge (Reload) Void Recharge Balance Inquiry
2. Message format requires RAW MICR to be 50 chars	<ul style="list-style-type: none"> • Fixed • LML host specification calls for the RAW MICR field to be 50 characters long. This has been corrected from the previous 20 character setting.

Lynk

Enhancement	Description
1. -No Change to Host -	<ul style="list-style-type: none"> • ---

LX1, LX2, LX3 Hosts

Enhancement	Description
1. Change manual GC formatting	<ul style="list-style-type: none"> • Enhancement • For Manual entry of gift card redemptions, no expiration date will be prompted for. LX Host gift cards do not possess an expiration date. • Manual Gift Card Redemptions and Gift Card Activation Voids are both sent up with the current date as the card expiration date. For internal messaging as well, to fill the date field, the current date will be used.

Mainsail

Enhancement	Description
1. -No Change to Host -	<ul style="list-style-type: none"> ---

MPS (Fifth Third)

Enhancement	Description
1. No TORs for Balance Inquiries or Checks	<ul style="list-style-type: none"> Fixed TORs are no longer set for Balance Inquiries or Check transactions. A bug prevented these transaction types from being deleted from the TOR queue.

MTX Receipt Capture Host

Enhancement	Description
1. Receipt Host notifies WinEPS if busy	<ul style="list-style-type: none"> Enhancement The SecureSend server for the receipt files has been modified to return a code of 1723 if all of the threads for uploading and processing the file are currently busy. If WinEPS receives this code, it waits 10 minutes before attempting to connect to the primary server again. After 5 attempts resulting in a busy notification, WinEPS will then try to connect to the backup SecureSend server, following the same procedure.

NOVA

Enhancement	Description
1. -No Change to Host -	<ul style="list-style-type: none"> ---

Paypoint

Enhancement	Description
1. -No Change to Host -	<ul style="list-style-type: none"> ---

Pay by Touch

Enhancement	Description
1. -No Change to Host -	<ul style="list-style-type: none"> ---

ServerEPS

Enhancement	Description
1. New ServerEPS Host	<ul style="list-style-type: none"> Enhancement The new ServerEPS Host will be providing increased future options. This host will offer additional services for use with the WinEPS software. The host will require a separate installation to enable new menu items, and will require a separate service contract for the new features. Currently under development. Not available for selection at this time.
2. BIN File Update for ServerEPS Host Preliminary Stage	<ul style="list-style-type: none"> Preliminary Server EPS will offer a new service for automatically updating BIN files separately from existing hosts. This is in the preliminary stages and will require a separate installation that works with WinEPS and will require separate licensing.
3. Server EPS GUI	<ul style="list-style-type: none"> Enhancement ServerEPS requires a separate installation to enable the ServerEPS menu items in WinEPS. Without the separate installation, the menu items for ServerEPS will not be present in the WinEPS GUI at all. Installing the ServerEPS GUI requires the Microsoft .Net framework be previously installed.

Shared (BigY)

Enhancement	Description
1. RFID support for Shared Big Y Host	<ul style="list-style-type: none">• Enhancement• The Big Y host will receive notification that a transaction was initiated by RF ID.• For transactions that were initiated by RF ID, the message to the Big Y host will include bit 22 set to '4'.

SCAT Code Changes

C2000

Enhancement	Description
1. -No Change to Terminal Code -	<ul style="list-style-type: none"> • ---

eN-Crypt 2100

Enhancement	Description
1. New Terminal: Ingenico eN-Crypt 2100	<ul style="list-style-type: none"> • Enhancement • Support for the Ingenico eN-Crypt 2100 terminal has been added. • This terminal with feature OPOS communication from OpenEPS. <p>Unsupported TAC's:</p> <ul style="list-style-type: none"> • Q- Select Language The Encript-2100 does not allow the MSR and Display Text controls to be active at the same time. • d- BioMetrics The Encript-2100 does not allow the MSR and Display Text controls to be active at the same time. • J- Phone Number The Encript-2100 does not allow the MSR and Display Text controls to be active at the same time. • Configurable Text: MSR PIN – still waiting for response from Ingenico • B- Card Slide Hitting the zero key at card slide will not simulate failed card read. • e- Credit to Debit Can not control text on PIN request and would have no escape back to Credit. • Full details on this feature are included in Section 2.

Everest

Enhancement	Description
1. -No Change to Terminal Code -	<ul style="list-style-type: none"> ---

HYP4100

Enhancement	Description
1. RFID support in 4100 terminal	<ul style="list-style-type: none"> Enhancement RFID is supported in version 104 and beyond of the 4100 SCAT code.
2. 4100 SCAT Upgrade to version 105	<ul style="list-style-type: none"> Enhancement New 4100 terminal code has been released by Hypercom. The upgrade process is automatic. Note: Upgrading from versions prior to 104 can take extended periods of time, due to the requirement to upgrade to 104 first.

ICE5500

Enhancement	Description
1. Smart WIC updates temporary bucket	<ul style="list-style-type: none"> Fixed SmartWIC now updates the temporary bucket and receives confirmation of successful write before writing to the permanent bucket location.
2. New Big Y Screen Files	<ul style="list-style-type: none"> Enhancement New big Y screen files for the ICE 5500 have been added to the 817.0 CD.

ICE6000

Enhancement	Description
1. Smart WIC updates temporary bucket	<ul style="list-style-type: none"> Fixed SmartWIC now updates the temporary bucket and receives confirmation of successful write before writing to the permanent bucket location.

NCR 5993

Enhancement	Description
1. NCR 5993 signature too large	<ul style="list-style-type: none"> Fixed The 5993 was sending signatures that were larger than the maximum size that could be stored. This was causing a truncation issue where only a small fraction of the signature was saved. This has been altered so that if a signature is sent that is larger than the maximum storage size, the maximum storage size will be used.

Omni 490

Enhancement	Description
1. -No Change to Terminal Code -	<ul style="list-style-type: none"> ---

Omni 7000

Enhancement	Description
1. RFID support	<ul style="list-style-type: none"> Enhancement The Omni 7000 SCAT code has been updated so that track information acquired from RFID is differentiated from track data received by card slide. Information on how the track data was acquired is sent on to WinEPS.

Enhancement	Description
2. New SmartWIC Speciation for Omni 7000	<ul style="list-style-type: none"> • Enhancement • SmartWIC support has been added for the Omni 7000 terminal. • With the addition of the SmartWIC communication for the Omni 7000 terminal, the SmartWIC communication specification has changed. • For legacy purposes the old method of SmartWIC communication is still supported. The latest OpenEPS specification contains the new function calls required for the new message format. • Contact MTXEPS Support for the latest OpenEPS specification.
3. Increased Signature Speed	<ul style="list-style-type: none"> • Enhancement • The newest Omni 7000 SCAT code includes enhancements to make the Signature Capture process faster.

Stand Beside Code Changes

Omni 490

Enhancement	Description
1. -No Change to Stand Beside Code -	<ul style="list-style-type: none"> • ---

C2000

Enhancement	Description
1. -No Change to Stand Beside Code -	<ul style="list-style-type: none"> • ---

Everest

Enhancement	Description
1. -No Change to Stand Beside Code -	<ul style="list-style-type: none"> • ---

External Program Changes

Redundancy Service

Enhancement	Description
1. RS Help Button	<ul style="list-style-type: none"> • Enhancement • A help button has been added to the Redundancy Service. The help file contains useful excerpts from the RS Users Guide.
2. RS GUI Password	<ul style="list-style-type: none"> • Enhancement • The Redundancy Service GUI now requires a password to log into. No functions are available until the password is entered, although the status on the primary screen can be viewed. • Contact WinEPS Support to acquire the login password.

Virtual Terminal

Enhancement	Description
1. VT Crashed on receipt of decline	<ul style="list-style-type: none"> • Fixed • Fixed crashing when Virtual Terminal receives a decline and needs to print a decline receipt.
2. VT Required double click on tender	<ul style="list-style-type: none"> • Fixed • Virtual Terminal had a bug which required the transaction button to be selected twice. This bug has been fixed.

Host Simulator

Enhancement	Description
1. -No Change to Host Simulator -	<ul style="list-style-type: none"> • ---

UpdateFiles.Exe

Enhancement	Description
1. -No Change to UpdateFiles.Exe -	<ul style="list-style-type: none">• ---

OMNI 7000 Scanmaster Code

Terminal code for the Scanmaster system is written and maintained by Concord. It is distributed on the WinEPS installation CD for convenience only.

Enhancement	Description
1. -No Change to Scanmaster Code -	<ul style="list-style-type: none">• ---

Section 2

New Features

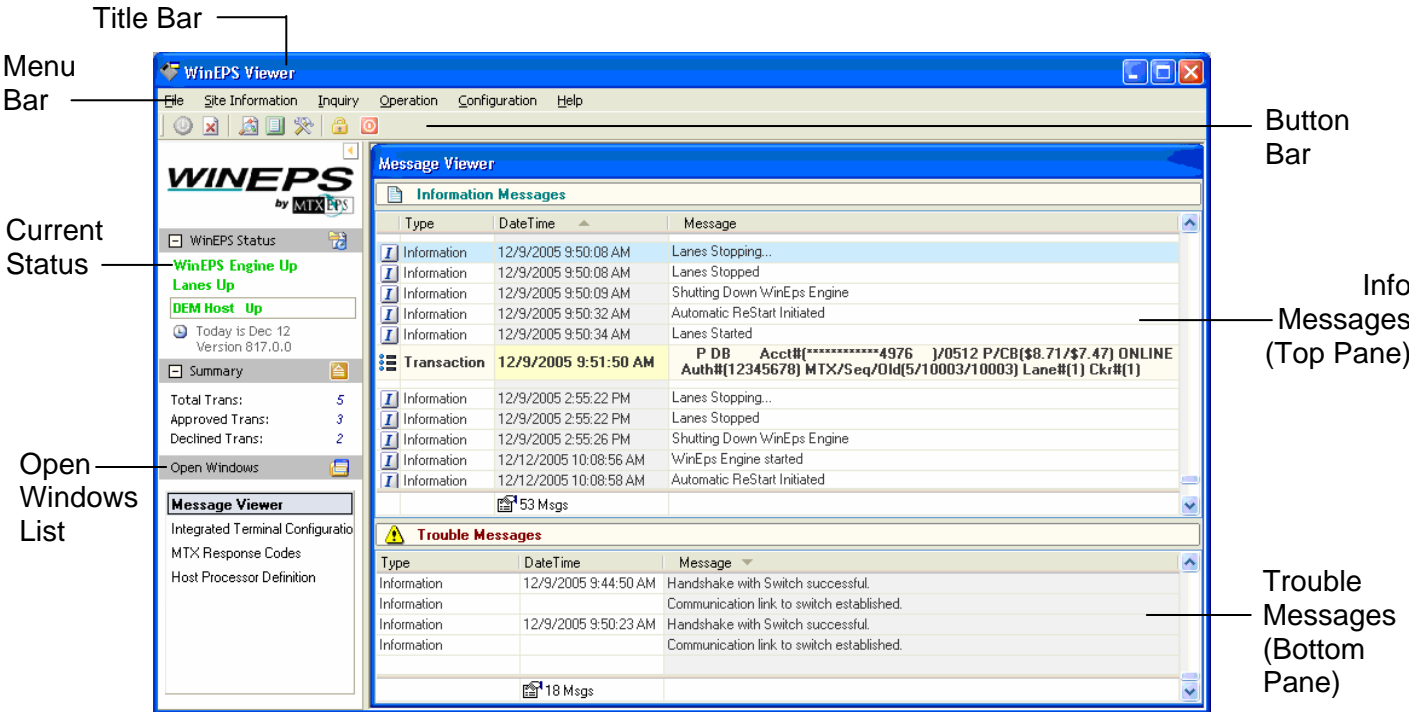
WinEPS Fixed Issues and Enhancements #17:

New WinEPS GUI

The WinEPS GUI has undergone major cosmetic changes. The functionality has not significantly changed, but the layout has been improved for clarity. An example of the new GUI is shown below.

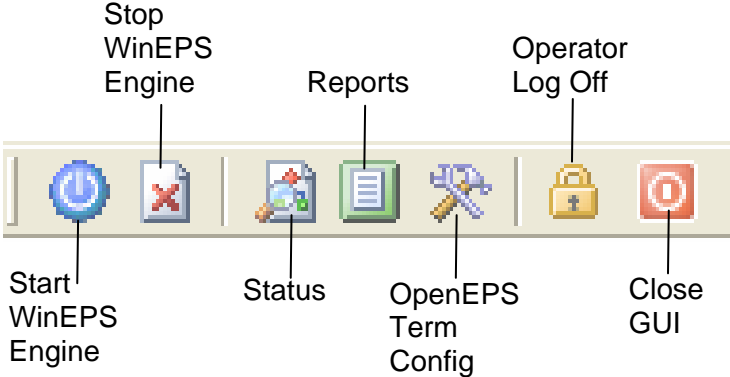
When you start WinEPS, the WinEPS Main Screen contains the following components:

- Title Bar
- Menu Bar
- Current Status
- Button Bar
- Info Messages (top pane)
- Trouble Messages (bottom pane)
- Open Windows List



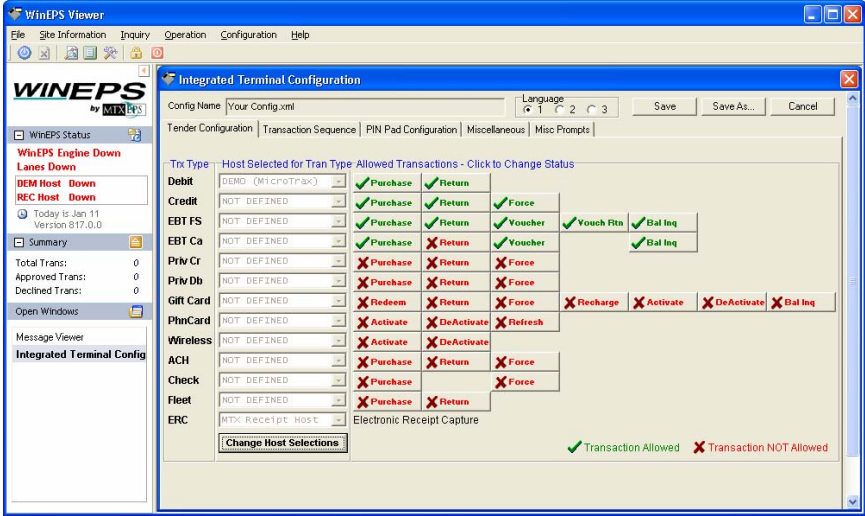
Button Bar in Detail

The button bar contains ‘quick buttons’ for commonly used WinEPS options. Below each button is related to the menu item that it acts like.



Integrated Windowing

One of the most significant changes to the WinEPS GUI is the integrated windowing. Previously all windows opened separately, and closed independently. The new GUI features all windows displayed as a part of the GUI.



Additionally, on the left side of the screen in the Open Windows List, a list of active windows appears, allowing the user to switch between viewing several windows.

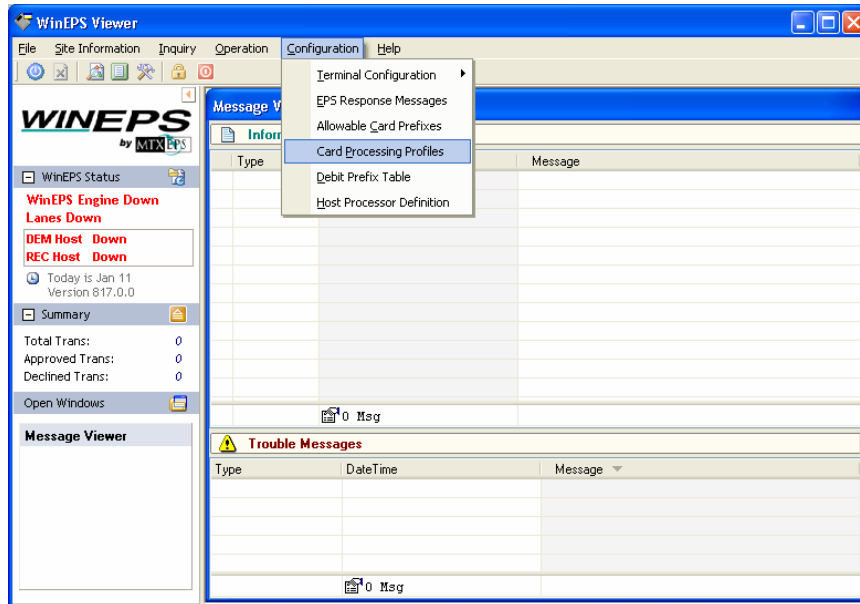
WinEPS Fixed Issues and Enhancements #6:

Deny Cashback on Manual Entry

An addition was made to the Card Processing Profiles whereby any card that offers cashback can be set to deny cashback if that card is manually entered. This is of primary use when using the cashback option with Discover cards, but may be set with any card that can give cash back, such as EBT Cash.

To set up this feature, follow the instructions below:

1. In the WinEPS GUI, go to Configuration | Card Processing Profiles



2. Use the Up and Down arrows at the top left of the Card Processing Profiles screen to select the card you wish to work with.
3. Select Change
4. Under the Processing Flags, the option for Allow Cash Back should be checked if the card type allows cashback.

The screenshot shows the 'Card Processing Profiles' window. The 'Card Type' section has Code 'DS', Name 'Discover', and Fleet Type 'None'. The 'Reporting Groups' section has four dropdown menus, all set to 'Discover'. The 'Processing Flags' section has several checkboxes: 'Manual Entry Allowed' (checked), 'Prompt For Zip Code' (unchecked), 'Prompt For CVV2' (unchecked), 'Verify Acct# Check Digit' (unchecked), 'PIN Required' (checked), 'Allow Cash Back' (checked), 'Not Allow on Manual Entry' (checked), 'Expiration Date Required' (checked), 'Verify Exp Date Online' (checked), and 'Verify Exp Date Offline' (checked). The 'Local Auth Flags' section has two columns of checkboxes: 'Allow local auth?' and 'Allow local void?'. The 'Online Auth Limits (in cents)' section has fields for Maximum Total Amount (999999), Maximum Cashback Amount (0), Minimum Total Amount (0), Minimum Cashback Amount (0), and Minimum Credit-to-Debit Amount (0). The 'Offline Auth Limits (in cents)' section has fields for Maximum Total Amount (20000), Maximum Cashback Amount (0), and Minimum Credit-to-Debit Amount (999999). The 'Other (in cents)' section has a field for PreAuth amount to send to host (5000).

- 5. After the Allow Cash Back checkbox is checked, the Not Allow On Manual Entry option appears. Check the box next to this option as well (shown above).

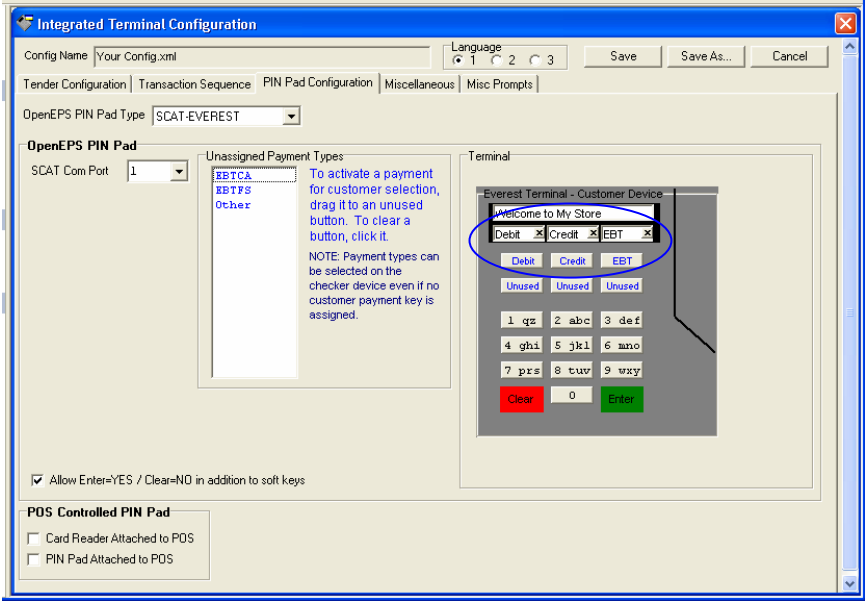
WinEPS Fixed Issues and Enhancements #19:

Convert Soft Keys to Function Keys

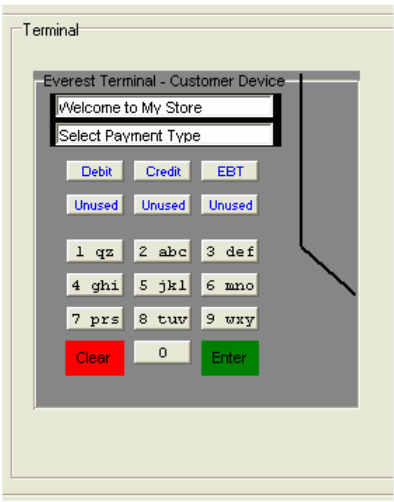
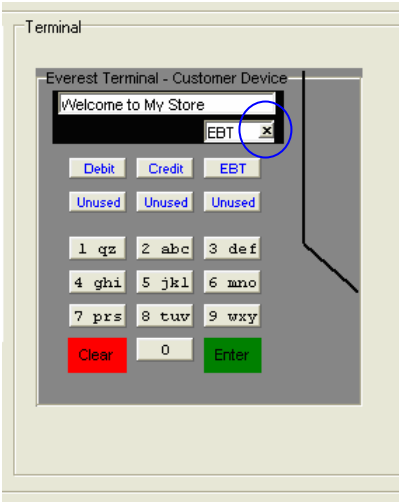
Many terminals already have templates that label the top keys, making the on-screen labeling redundant. These Soft Keys that reside nearest the display screen can be converted to 'Function Keys' where on-screen labeling doesn't appear, allowing more space on the screen for message printing.

To prevent the on-screen labels from appearing, follow the steps below.

1. In the WinEPS GUI, go to Configuration | Terminal Configuration | OpenEPS Lanes.
2. Select your terminal configuration from the list.
3. Select the PIN Pad Configuration Tab.



4. The text box appearing above the Soft Key buttons, includes an X. Clicking that X will remove the on-screen text. Click the X for each button whose text is to be removed.



5. Once the text has been removed, save the configuration. If you wish to restore the text, click the button to remove the tender type and then replace it.

WinEPS Fixed Issues and Enhancements #22:

Setting SmartWIC State Code

To support future development for the New England Partners SmartWIC, a new dropdown box is available in the Terminal Configuration for selecting the SmartWIC state code. The Current available Options include Texas-New Mexico and New England Partners.

To set the SmartWIC state code, follow the steps below.

1. In the WinEPS GUI, go to Configuration | Terminal Configuration | OpenEPS Lanes.
2. Select your terminal configuration from the list.
3. Select the Miscellaneous Tab.

The screenshot shows the 'Integrated Terminal Configuration' dialog box with the 'Miscellaneous' tab selected. The 'WIC State Code' dropdown menu is open, showing the following options: 'Texas/New Mexico = TX or NM', 'None', 'Texas/New Mexico = TX or NM', and 'New England Partners (not yet supported)'. The 'None' option is currently selected. Other settings visible include 'WinEPS Connection Settings' (Primary WinEPS TCP/IP Addr/Host Name: localhost, Port #: 5201), 'OpenEPS Journal Trace Settings' (Trace All Calls made by the POST, Trace TCP/IP WinEPS Interface, Trace Serial SCAT Interface), 'Manager ID Validation Type' (POS Validation), 'POS Gift Card Return Is' (Normal), and 'MICR Reader' (MICR Reader Type: MICR Reader Attached to POS).

4. At the bottom of the screen, use the WIC State Code dropdown box to select the state.
5. Click Save.



Note: This is set per-configuration. If multiple configurations are running at a store location (such as a separate configuration for front lanes and service desk) each terminal configuration must be updated with the WIC State setting.

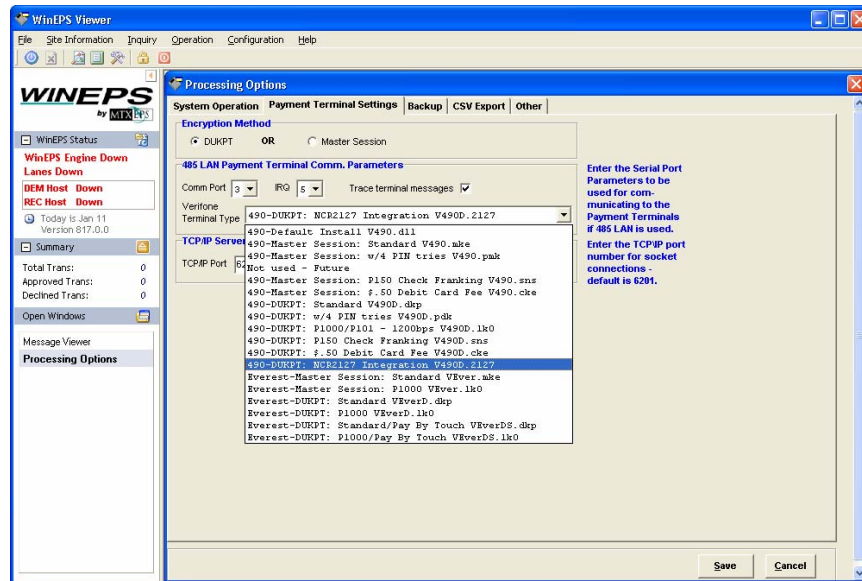
WinEPS Fixed Issues and Enhancements #28:

2127 Code Selection

The terminal code for the 2127 has been separated from other stand beside code. Users currently using 2127 must select the proper code version to use.

To select the 2127 terminal code, follow the steps below.

1. In the WinEPS GUI, go to Site Information | Processing Options.
2. Go to the Payment Terminal Settings Tab.
3. Use the Verifone Terminal Type dropdown list to select:
490 – DUKPT: NCR2127 Integration V490D 2127

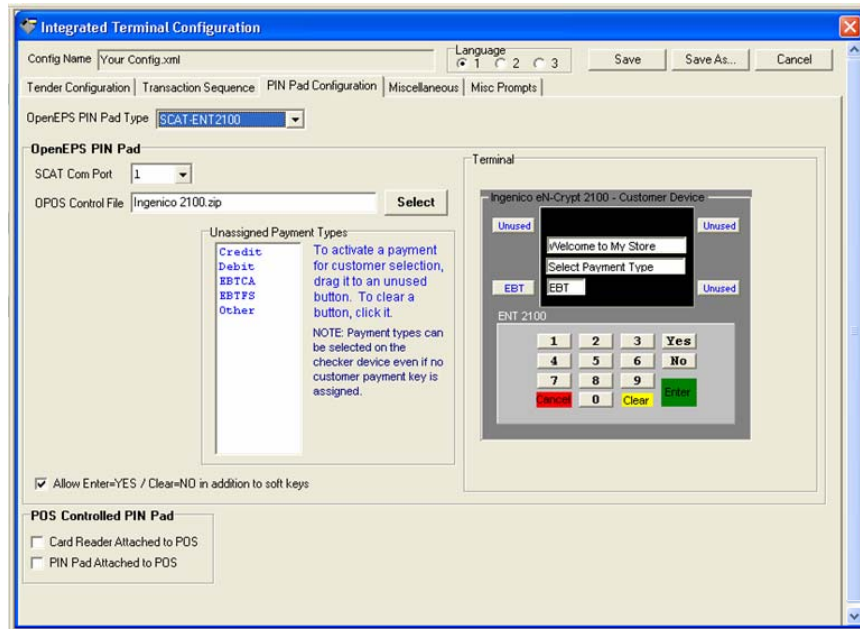


4. Click Save.

SCAT Code Changes - eN-Crypt 2100 #1:

New Terminal: eN-Crypt 2100

The Ingenico eN-Crypt 2100 terminal has been added as a supported terminal for WinEPS. It is available for selection from the terminal configuration screen, and can be configured in the same fashion as other terminals. This terminal communicates with OpenEPS through OPOS.



Currently, this terminal cannot be used with the following Terminal Action Codes:

- Q- Select Language
The Encrpt-2100 does not allow the MSR and Display Text controls to be active at the same time.
- d- BioMetrics
The Encrpt-2100 does not allow the MSR and Display Text controls to be active at the same time.
- J- Phone Number
The Encrpt-2100 does not allow the MSR and Display Text controls to be active at the same time.
- Configurable Text:
MSR
PIN – still waiting for response from Ingenico
- B- Card Slide
Hitting the zero key at card slide will not simulate failed card read.
- e- Credit to Debit
Can not control text on PIN request and would have no escape back to Credit.

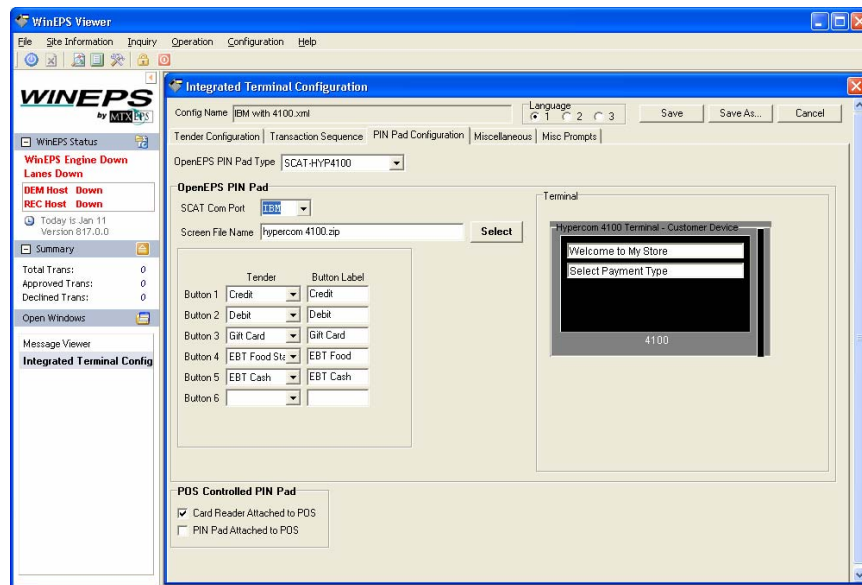
For this terminal to function properly, several Windows Registry keys must be present on the POS lane. OpenEPS has been updated to automatically add the required registry settings when the eN-Crypt 2100 is defined.

WinEPS Fixed Issues and Enhancements #21:

IBM Interface

WinEPS supports the IBM register software. This newly developed interface to the IBM POS allows WinEPS to process transactions using the OpenEPS interface.

- The WinEPS IBM interface supports:
 - Standard WinEPS configuration options (such as user configurable prompts, and Credit to Debit conversion)
 - All Standard Tender types (Credit, Debit, EBT, Gift Card, Check)
 - 4100 terminals (only)
 - Signature Capture



The IBM interface requires the installation of special user exits on the IBM system as well as a new executable called MultiEPS. MultiEPS handles communication between the IBM POS lanes and OpenEPS.

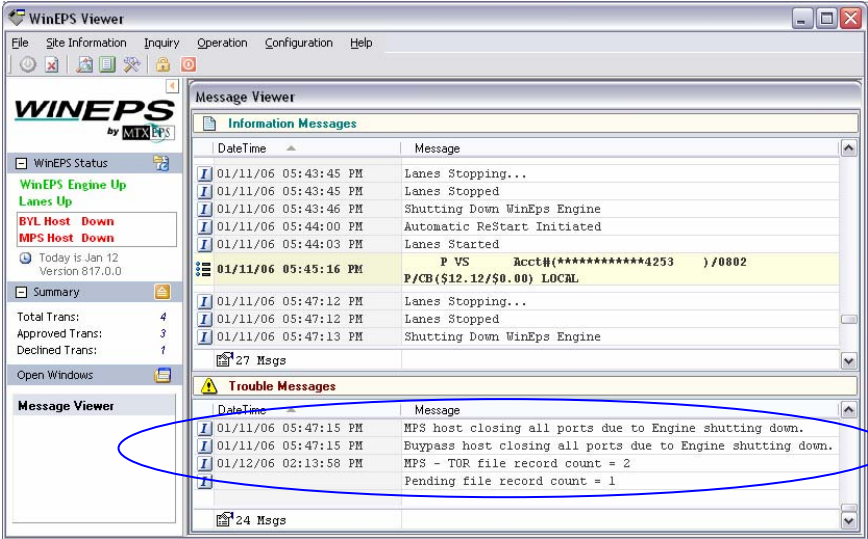
IBM uses a specific COM Port setting in the Terminal Configuration; setting the SCAT Com Port to 'IBM' is necessary for communication with MultiEPS.

The IBM interface is currently entering its pilot phase, and a default terminal configuration for IBM has been included in the WinEPS installation. Future production will include an installation package for MultiEPS on the WinEPS CD.

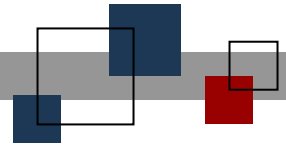
WinEPS Fixed Issues and Enhancements #8:

Display of Offline Transactions

When WinEPS starts, the number of offline transactions currently queued to be sent to the host is displayed in the Trouble Messages section of the WinEPS main screen.



In the screen shot above, the host has 2 pending TOR files, and 1 pending offline transaction.



© StoreNext Retail Technologies LLC 2006

StoreNext Retail Technologies LLC endeavors to ensure that the information in this document is correct and fairly stated but does not accept liability for any error or omission.

The development of StoreNext products and services is continuous and published information may not be up to date. It is important to check the current position with StoreNext. This document is not part of a contract or license save insofar as may be expressly agreed.