



-  *WinEPS Release Notes*
-  *Version 818 SP1*
- 
- 
- 

WinEPS Release Notes

Date of Issue	Product Identification Number	Part Number	Brief Description
June 2005	45001/096	89000235	815.3 Preliminary
July 2005	45001/096	89000248	815.3 Final Release
October 2005	45001/096	89000261	815.3 SP1
April 2006	45001/096	89000303	817 SP2
June 2006	45001/096	89000310	818 SP1

**© Copyright StoreNext Retail Technologies LLC 1995-2006
All rights reserved**

This publication is protected by federal copyright law. No part of this publication may be reproduced or transmitted into any human or computer language in any form or by any means, stored in a retrieval system, transmitted, redistributed, translated or disclosed to third parties, or de-compiled in any way including, but not limited to, photocopy, photograph, electronic, mechanical, magnetic or manual without the express written permission of StoreNext Retail Technologies LLC or its licensors, if any. This document, notwithstanding the above, may be distributed in electronic or printed form to personnel who are employed by either (1) a StoreNext customer of the subject system of this document or (2) personnel from an authorized StoreNext dealer of the subject system of this document. All copies, so distributed and/or so authorized, shall contain a full copy of this copyright notice.

StoreNext Retail Technologies LLC endeavors to ensure that the information in this document is correct and fairly stated but does not accept liability for any error or omission. StoreNext Retail Technologies LLC makes no representation or warranties with respect to the contents hereof, and specifically disclaims any implied warranties of merchantability or fitness for a particular purpose or non-infringement. No commitments by StoreNext or its suppliers are made from this documentation which is provided for information only.

Development of StoreNext products and documentation is continuous: StoreNext Retail Technologies LLC reserves the right to revise this publication and to make changes from time to time in the contents hereof or in the products herein described or discussed without notice and without any obligation of StoreNext Retail Technologies LLC to notify any person or organization of such revision or changes. Information published in this document will likely become obsolete over time and it is recommended that users regularly check for updates and newer versions.

StoreNext Retail Technologies LLC has prepared this manual for use by users, authorized third parties and personnel of StoreNext Retail Technologies LLC as a guide to the proper installation, operation, customization and/or maintenance of StoreNext Retail Technologies LLC equipment and software. The drawings and specifications contained herein are the property of StoreNext Retail Technologies LLC and/or its licensors.

Third-party products, services, or company names referenced in this document may be trademarked or copyrighted by their respective owners, and are for identification purposes only.

Copyrights, trademarks and license agreements shall be governed and construed in accordance with the laws of the State of Texas and the Federal Arbitration Act, and shall benefit Retailix, its successors, and assigns.

Address comments and corrections to:

StoreNext Retail Technologies LLC
Software Program Director
6100 Tennyson Parkway
Suite 130
Plano, Texas 75024

Table of Contents

SECTION 1	1
818 SP1 Information	1
OpenEPS, Stand Beside & Terminal Code Versions	2
OpenEPS Versions:.....	2
SCAT Code Versions:.....	2
Stand Beside Code Versions:.....	2
Known Issues	3
OPOS Controls for ACS are under development.....	3
MX870 Signature Capture Box.....	Error! Bookmark not defined.
WinEPS Fixed Issues and Enhancements	4
OpenEPS Changes	11
OpenIP Changes	14
Host Changes	15
ACI	15
Albertsons	16
Ascendent	16
BioPay.....	16
Concord: EPC	17
Concord: H&C Format	18
Concord: Memphis	18
Credomatic.....	18
Demo.....	19
ePicTranz	19
GlobalPay	19
LML.....	20
Lynk.....	21
LX1, LX2, LX3 Hosts	21
Mainsail	22
Mercury.....	22
MPS (Fifth Third)	23
MTX Receipt Capture Host	24
NOVA.....	24
Paypoint	25
Pay by Touch	25
Shared (BigY).....	26
SCAT Code Changes	27
Hypercom ICE5500	27
Hypercom ICE6000	27
Hypercom L4100	28
Hypercom L4250	28
Ingenico eN-Crypt 2100	29
Ingenico eN-Touch 1000	29
IVI C2000 Protégé.....	29
NCR 5993	29
Verifone Everest	30
Verifone MX870.....	30
Verifone Omni 490	30
Verifone Omni 7000	32
Stand Beside Code Changes	33
IVI C2000 Protégé.....	33
Verifone Everest	33

Verifone Omni 490	33
External Program Changes	34
Redundancy Service	34
Virtual Terminal	34
Host Simulator	34
OMNI 7000 Scanmaster Code	34
UpdateFiles.Exe	35
WinEPS Agent	35
SECTION 2	36
New Features	36
Biometrics Check Cashing	36
Setting up the Verify Customer Name TAC	36
Optional Customer Name Printing on Receipt	38
WinEPS Engine Monitor and Tray Icon	39
Displays	39
Setup	40
Mercury	42
Host Processor Definition Screen	42
Supported Encryption Types	43
Additional Information	44
Hypercom L4250	45
Loading SCAT Code on the L4250 Terminal	45
Standard SCAT Loading	45
Setup Terminal Configuration	45
OpenEPS Setup for the L4250	45
Set Terminal to Download	46
Launch Stream Loader	46
Sign on to POS lane	48
Manual SCAT Loading	48
Extract the SCAT Code	48
Perform Standard SCAT Load	48
Ingenico eN-Touch 1000	49
Loading Script Code on the Ingenico eN-Touch 1000	49
Standard Script Loading	49
Manual Script Loading	49
Extract the Script Code	49
Set Terminal to Download	49
Run a Batch File	49
Verifone MX870	51
Loading FormAgent Code on the MX870	51
Standard FormAgent Loading	51
Setup Terminal Configuration	51
OpenEPS Setup for the MX870	51
Set Terminal to Download	52
Extract the FormAgent Code	52
Run a Command Line Batch File	52
Sign On POS	53
Manual FormAgent Loading	54
Extract the FormAgent Code	54
Set Terminal to Download	54
Run a Command Line Batch File	54
Extract the Screen files	54
Set Terminal to Download	54

Section 1

818 SP1 Information

This section covers changes, bug fixes, and enhancements to the 818 SP1 release of WinEPS. The items listed below are the changes made only since the previous release. Previous editions of the WinEPS Release Notes are located on the WinEPS installation CD, in the directory Documents/Old Release Notes, or contact WinEPS support for a copy.

The 818 SP1 Version is certified PCI Compliant. Refer to the WinEPS Users PCI Recommendations Guide for complete information of setting up a PCI compliant environment.

OpenEPS, Stand Beside & Terminal Code Versions

OpenEPS Versions:

Module	Version	Date
mtx_eps.dll	818 SP1.0.603	6/16/2006
mtx_pos.dll	818 SP1.0.5	3/22/2006
libmtx_eps.so	818 SP1.0.700	6/20/2006
libmtx_pos.so	818 SP1.0.032201	3/22/2006

SCAT Code Versions:

Type	Terminal	Version	Date
SCAT / Script / Terminal Code	C2000	32	1/5/2005
	eN-Crypt 2100	2.01	1/20/2003
	eN-Touch 1000	06.06	1/20/2003
	Everest	38	3/2/2006
	HYP 4100	109.0.0	3/16/2006
	ICE 5500	109	3/3/2006
	ICE 6000	109	3/3/2006
	L4250	104	3/31/2006
	MX870	9A	6/2/2006
	NCR 5993	11	11/29/2005
	Omni 490	58	3/2/2006
	Omni 7000	40	4/4/2006

Stand Beside Code Versions:

Type	Terminal	Version	Date
Stand Beside	C2000	45	8/17/2004
	Everest	383	5/5/2005
	Omni 490	379	2/18/2005

Known Issues

Upgrade from 817.0 may require POS restart

Field reports from the 818 SP1 Beta release indicate that some POS systems may experience a crash during the automatic upgrade from the 817.0 OpenEPS DLL files to the 818 SP1 OpenEPS DLL files.

If the POS software crashes during the first sign on after an upgrade, simply restart the POS software, no further issue should occur.

OPOS Controls for ACS are under development

OPOS does not currently function with the ACS POS system. Terminals that require OPOS such as the Ingenico eN-Crypt 2100 and Ingenico eN-Touch 1000 will not currently function with the ACS POS system.

Contact ACS for additional information on the use of OPOS with the ACS POS.

WinEPS Fixed Issues and Enhancements

Enhancement	Description
<p>1. Biometrics Check Cashing – Customer Name Verification</p>	<ul style="list-style-type: none"> • Enhancement • WinEPS now supports a method for verifying the customer name for check cashing via the use of Biometrics. • Pay By Touch has not yet finalized their development for this feature. This feature will not be available until the Pay by Touch development is completed. • To utilize this, the new TAC n – Verify Customer Name was added. • During a biometrics transaction, the POS must request the SecondaryIDType of 'BX'. OpenEPS will then acquire the Customer name information, and display it to the Cashier screen when TAC n is processed. This allows the cashier to verify the biometrics supplied name versus the name on the check. • After the cashier verifies the customer name, OpenEPS will utilize the Driver's License (or other ID info) and State Code information supplied by Biometrics to complete the check transaction, instead of requiring these to be imputed by the cashier. • The following POS systems plan to utilize this functionality: <ul style="list-style-type: none"> StoreLine NCR ACS ISS45 Version 7 & 8 • Contact your POS vender for information on when this functionality will become available. • Full details on this feature are included in Section 2.
<p>2. Print Customer Name on Receipt Option</p>	<ul style="list-style-type: none"> • Enhancement • A Card Processing Profile flag has been added to allow the Option of printing or not printing the customer's name on the receipt. • This option only controls the WinEPS generated receipt; it is therefore effective for systems that utilize the WinEPS receipt. This option will not function for POS systems that utilize their own receipt templates. • Full details on this feature are included in Section 2.
<p>3. Removed signature line from the customer receipt copy</p>	<ul style="list-style-type: none"> • Enhancement • The signature line was unnecessary on the customer copy of the credit card receipt, and has been removed. • This change only affects POS systems that utilize the WinEPS receipts. This change will have no effect for POS systems that utilize their own receipt templates.

Enhancement	Description
4. Internal Certification of the RORC POS system	<ul style="list-style-type: none"> • Certification • The VIPOS software was internally certified. • The following transaction types were verified: <ul style="list-style-type: none"> Credit Debit EBT Check Gift Card
5. Enhance Card Prefix Table	<ul style="list-style-type: none"> • Enhancement • The Card Prefix Tables no longer allow the entry of two identical prefixes and lengths. This prevents two identical entries in any single table that could be mapped to different card types.
6. Implement Administrative level Operators	<ul style="list-style-type: none"> • Enhancement • An administrator flag option has been added to the Operator rights screen. This option prevents any user without the Administrator check mark from modifying any Operator account that is an Administrator.
7. Not Setting Receipt Lines on Non Credits for ERC	<ul style="list-style-type: none"> • Fixed • The electronic copy of the receipt was missing the signature line, but retaining the actual signature, during electronic receipt capture of non-credit transactions. The signature line is now present with the signature positioned correctly. • The Albertsons host had the same issue and fix with credit transactions.
8. Line up display of transaction info	<ul style="list-style-type: none"> • Enhancement • Corrected alignment of transaction information on the WinEPS info screen by implementing auto-height adjustment, and automatic line wrapping. • A slight misalignment of the Decline information was also corrected.
9. Force/Voucher transactions missing Auth number.	<ul style="list-style-type: none"> • Enhancement • The new WinEPS Decline code 115 is sent to the POS for Force or Voucher transactions that have a blank (or missing) authorization number.
10. Silent installation by non-admin, failure logging	<ul style="list-style-type: none"> • Fixed • When performing a silent installation, if the service installation failed due to lack of user rights, the installation log did not list a reason for the install failure. Verbose logging has been added. • As a note, during standard or silent install, to install the WinEPS service correctly, the user must be logged on as a Windows administrator, and must have the permission to write to the root of C drive to allow the creation of the installation log file.

Enhancement	Description
11. Allowable Prefix table changes require Engine stop/restart	<ul style="list-style-type: none"> • Fixed • Changes to the Approved Prefix tables require the stop and re-start of the WinEPS engine to implement. The reminder box incorrectly specified only the stop and start of lanes was required.
12. Operators unable to view full card number	<ul style="list-style-type: none"> • Fixed • Operators with the appropriate 'Unmask CC Number' right were unable to view the full account number in the WinEPS reports. • The report module was fixed to allow viewing by Operators with the proper rights.
13. Default Response code Enhancement	<ul style="list-style-type: none"> • Enhancement • WinEPS uses the default response code '---' mapped to a decline, in the event that it receives a response code that is not otherwise listed in the response table. • The response codes tables have been updated to prevent the deletion or removal of the default response code. The default is essential for proper WinEPS functioning. The default response code remains configurable to allow the alteration of the decline message. • In the event the default response code is missing, it will automatically be added with its default values. • The default response code '---' will always appear at the top of the response code list for easier viewing.
14. Inconsistent logging of user starting engine	<ul style="list-style-type: none"> • Fixed • The WinEPS engine was not consistently logging when a user started the WinEPS service. The logging has been adjusted to log each time a user starts the engine.
15. Improve Critical Section use	<ul style="list-style-type: none"> • Enhancement • The OpenEPS dll file has been updated with additional critical sections to allow access to additional sections of the code at the same time. These enhancements have assisted in improving transaction speed for the new IBM interface.
16. GUI Transaction totals list not resetting	<ul style="list-style-type: none"> • Fixed • The listing of Total Transactions, Approved Transactions, Declined Transactions on the WinEPS GUI was not cleared out properly during the WinEPS End of Day. These totals are now reset each day.
17. ApprovedAmount set on local approvals	<ul style="list-style-type: none"> • Fixed • OpenEPS is now correctly setting the ApprovedAmount variable on locally approved (offline) transactions.

Enhancement	Description
18. WinEPS login box integrated into GUI	<ul style="list-style-type: none"> • Enhancement • The Operator login box has been integrated into the WinEPS Main GUI. This change will prevent a separate login box from popping up each time the WinEPS GUI logs the current user off. • The main WinEPS screen can still be viewed while no Operator is logged in.
19. Add cashier.eft to FVersion.txt	<ul style="list-style-type: none"> • Enhancement • Virtual Terminal will be capable of utilizing the cashiers listed in WinEPS. To facilitate that, the cashier list must now be sent down to the lane.
20. Revision of Debug messages	<ul style="list-style-type: none"> • Enhancement • Unnecessary Debug lines have been removed from the WinEPS code base. Debugs that retained their usefulness for support purposes have been revised to become standard log messages.
21. Engine monitor and tray icon for WinEPS	<ul style="list-style-type: none"> • Enhancement • An optional system tray icon was added to WinEPS to display the engine status when the WinEPS GUI is not open. • The icon appears in the windows system tray, and is green when WinEPS is up, and red when WinEPS is down. If the WinEPS engine goes down, a notice window of "WinEPS Engine Down" is displayed. • To initiate the tray icon and engine monitor, you must manually start the WinEPSAgent.exe, or place a shortcut to it in the Windows Startup folder. • Full details on this feature are included in Section 2.
22. Problem with polling the Ice 5500 terminal during Smart WIC call	<ul style="list-style-type: none"> • Fixed • An error was corrected with a timing issue where the Get Pin would return immediately with UNKNOWN ERROR, which was causing the Pin Entry screen not to display.
23. Added Begin Order button to POS simulator	<ul style="list-style-type: none"> • Tool Enhancement • The POS Simulator tool was updated with a Begin Order button to better simulate OpenEPS/POS communication. • The Begin Order button makes the MTX_POS_BeginOrder call followed immediately by the MTX_POS_SET_PostTransactionNumber call.
24. ScatStatus not set to "FatalError" during ReloadPrevious Transaction	<ul style="list-style-type: none"> • Fixed • When ReloadPreviousTransaction was used, SCATStatus was set to Done instead of Fatal Error for transactions that were not allowed • Currently, if the ReloadPreviousTransaction call is used and a transaction that is not supported is called, ScatStatus is kept at <FatalError>, so the POS will not continue through the transaction.

Enhancement	Description
25. Debit BIN Prefix Table Format	<ul style="list-style-type: none"> • Enhancement • Adjusted grid height to increase legibility.
26. Added BIO secondary ID type to host simulator	<ul style="list-style-type: none"> • Tool Enhancement • The host simulator has been updated with the ability to handle the Biometrics Secondary ID type (BX).
27. New Discover Card Prefixes	<ul style="list-style-type: none"> • Enhancement • The following new prefixes have been added to WinEPS for Discover credit cards: 6245XXXXXX 9843XXXXXX 9988XXXXXX • Upgrades to existing WinEPS systems will automatically add these new prefixes.
28. L4250 Default Configurations	<ul style="list-style-type: none"> • Enhancement • A set of default OpenEPS terminal configurations for the new L4250 terminal have been added.
29. MX870 Default Configurations	<ul style="list-style-type: none"> • Enhancement • A set of default OpenEPS terminal configurations for the new MX870 terminal have been added.
30. Notification changed from two years to three years	<ul style="list-style-type: none"> • Enhancement • The pop up box that notifies a user that the WinEPS version they are running is over two years old has been revised. It will now notify the user when WinEPS has exceeded three years old, and will suggest that the user upgrade.
31. Biometrics Socket remains open on Win '95	<ul style="list-style-type: none"> • Fixed • On Windows '95 machines, the biometrics socket must be left open while the POS application is active.
32. Enhance GC BI resetting	<ul style="list-style-type: none"> • Fixed • Because a GC Balance inquiry is a special transaction that does not perform a complete reset, a manual credit transaction performed right after the balance inquiry was experiencing issues. The reset was enhanced to remove additional data so that no conflict would occur.

Enhancement	Description
33. Some Reports not printing during EOD	<ul style="list-style-type: none"> • Fixed • An issue was fixed where several reports did not print automatically during the WinEPS End of Day, when they were selected in the WinEPS GUI. • The following reports were affected: <ul style="list-style-type: none"> Info Messages Trouble Messages Pre Auth /Completion Log Detailed Cashier Report Detailed Training Cashier Report Detailed Lane Report
34. Increase allowable PAN to 24 from 21	<ul style="list-style-type: none"> • Enhancement • Previously, card number had to be between 10 and 21 digits long. To accommodate Gift Cards with greater lengths, this limit has been increased to 10 to 24 digits.
35. Fixed Phone Card deactivations	<ul style="list-style-type: none"> • Fixed • Deactivation of phone cards was being declined by the engine with an MTX-115 decline. This issue has been corrected.
36. Report Module stand-alone fix	<ul style="list-style-type: none"> • Fixed • Fixed errors when attempting to run some reports with RPT.EXE in stand alone mode. Fixed issue where some of the reports were not being written to the correct temp files.
37. BlackHawk Gift Cards ACTIVATIONS ONLY	<ul style="list-style-type: none"> • Enhancement • WinEPS supports the sale of Blackhawk Gift Cards. Blackhawk may also be referred to as Safeway or RAP. • Currently, only Activations are supported. • Blackhawk Gift Cards are supported only for the ACI, MPS and Concord H&C hosts. • The UPC is front padded with zeros for full 11 digits • Blackhawk Gift Cards require the use of the p – UPC Code TAC. The p – UPC Code TAC must be placed in the Transaction Sequence for Gift Card Activation prior to the > – Send Transaction TAC. • To use Blackhawk cards, the POS system must also support their use. Verify with your POS dealer that your POS supports Blackhawk cards (128 barcode length).

Enhancement	Description
38. Report Module updated	<ul style="list-style-type: none"> • Fixed • When run as a stand alone application, the rpt.exe report module was not opening all available reports when a single actlog.eft was opened rather than the archive.zip. For reference, the missing reports were: <ul style="list-style-type: none"> - Sales Summary - Lane Totals - Sales Summary - Checker Totals - Offline Activity - Offline Transactions - Forward Pending - Offline Transactions - Fwd Appr/Rejected

OpenEPS Changes

Enhancement	Description
<p>1. Removed Sign on requirement for forwarding Stand in at the POST transactions</p>	<ul style="list-style-type: none"> • Enhancement • Previously, locally approved transactions (Stand in at the POST, Offline transactions) would have to wait for a sign on from the lane before forwarding up to WinEPS. This has been updated so that if offline transactions exist on a lane, no sign on is required for them to be forwarded automatically to WinEPS when communication is reestablished.
<p>2. New SmartWIC Functionality</p>	<ul style="list-style-type: none"> • Enhancement • The latest SmartWIC interface is different than previously utilized. OpenEPS now handles more of the integration, removing some of the burden from the POS systems. • The ICE 6000 and ICE 5500 terminal code has been updated to utilize the new WIC Interface. • WinEPS maintains its previous SmartWIC interface for terminals that were already supported; any new terminals will utilize the latest SmartWIC interface. • For complete information in the latest SmartWIC interface, refer to the OpenEPS SmartWIC Specification.
<p>3. Frequent Shopper entry by card slide</p>	<ul style="list-style-type: none"> • Enhancement • Frequent Shopper information can now be entered by a card swipe on the terminal. • This option requires the POS use the MTX_POS_SET_DataEntry function call, requesting the Card Slide / Numeric Entry, with the POS supplying the text to prompt the customer. • POS developers should refer to the OpenEPS specification for function specifics.
<p>4. OpenEPS adds registry entries for eN-Crypt 2100</p>	<ul style="list-style-type: none"> • Enhancement • The registry settings for the 2100 are automatically set by OpenEPS, on the POS lane. • The 2100 terminal uses OPOS which requires specific Windows Registry settings to function.
<p>5. OpenEPS adds registry entries for En-Touch 1000</p>	<ul style="list-style-type: none"> • Enhancement • The registry settings for the 1000 are automatically set by OpenEPS, on the POS lane. • The 1000 terminal uses OPOS which requires specific Windows Registry settings to function.

Enhancement	Description
6. New biometrics timer keyword in the OpenEPS ini file	<ul style="list-style-type: none"> • Enhancement • A new keyword has been added to the OpenEPS.Ini file. The BIOTIMEOUT keyword can be used to specify the timeout value for biometrics transactions. This value is for message timeout between OpenEPS and the Biometrics host. • If no OpenEPS.Ini file is present at the lane, or the BIOTIMEOUT keyword is not listed in the file, then the default will be 30 seconds.
7. TenderTypeMTX of No_Tender resulting in Null string	<ul style="list-style-type: none"> • Fixed • When MTX_POS_GET_TenderTypeMTX is called, and no tender is set, OpenEPS returns a null string. This has been corrected so that if no tender is present, it will return a string of all zeros (32 length in current code).
8. Biometrics messaging includes POST Transaction Number	<ul style="list-style-type: none"> • Enhancement • To allow the accurate tracking of a biometrics transaction, the POST Transaction Number is now included in every Biometrics message. • The use of the POST Transaction Number will prevent biometrics information from being erroneously utilized outside of the original transaction. • The POST Transaction Number is located in FID Y.
9. Linux OpenEPS fixes	<ul style="list-style-type: none"> • Fixed • Fixed issue where activating a phone card while being offline to WinEPS caused the POS to crash. • Addresses issues with offline approvals (stand in at the lane) for EBT food stamp and gift card/phone card recharge.
10. Issue with Amount OK after GC Balance Inquiry	<ul style="list-style-type: none"> • Fixed • During testing it was determined that a variable was not being initialized properly after a gift card balance inquiry if the POS called the Amount OK function. This caused the L – Customer Ok TAC to display an incorrect amount. The updated module will correctly wait for the transaction total to be set and then use that for the customer OK message.
11. Fixed FTP service handle leak	<ul style="list-style-type: none"> • Fixed • Fixed a handle leak with the FTP service. The leak occurred if the POS was signed on for a long period of time with the WinEPS lanes down.
12. Skipping TAC processing on canceled override	<ul style="list-style-type: none"> • Fixed • Corrected an issue where if the POS cancelled out of a manager override, OpenEPS would not process the first TAC in the sequence.

Enhancement	Description
13. Send customer display after sig cap	<ul style="list-style-type: none"> • Enhancement • Typically a signature capture is performed as part of a financial transaction, when the O – Signature Capture TAC is processed. OpenEPS has been enhanced to allow the POS to request a signature outside of a financial transaction. • When the POS requests a signature outside of a transaction, OpenEPS will search the configuration XML file for the O TAC. If the 'O' TAC is found in the config.xml then OpenEPS will use that text for the customer display during the signature request. If the 'O' TAC is NOT found in the config.xml then OpenEPS will use hard coded default text for the customer display during the signature request.
14. Corrected Biometrics disposition message	<ul style="list-style-type: none"> • Fixed • Addressed a BioMetrics issue where the transaction disposition message was not putting in the correct payment number.
15. Configurable Biometrics timer	<ul style="list-style-type: none"> • Enhancement • OpenEPS has been enhanced to use the configurable openeps.ini timer for the BioDOB / Frequent Shopper request. Previously this was a hard coded timer of 5 seconds.
16. Fixed invalid signature data	<ul style="list-style-type: none"> • Fixed • We had an issue where OpenEPS was passing invalid points to the POS during a signature capture. This was causing the POS application to crash on certain systems.

OpenIP Changes

Enhancement	Description
1. -No Change to OpenIP -	<ul style="list-style-type: none"><li data-bbox="553 394 630 415">• ---

Host Changes

ACI

Enhancement	Description
1. BlackHawk Gift Cards ACTIVATIONS ONLY	<ul style="list-style-type: none"> • Enhancement • WinEPS supports the sale of Blackhawk Gift Cards. Blackhawk may also be referred to as Safeway or RAP. • Currently, only Activations are supported. • Added bit 1-17 to ACI for GC Activation. • The UPC is front padded with zeros for full 11 digits • Blackhawk Gift Cards require the use of the p – UPC Code TAC. The p – UPC Code TAC must be placed in the Transaction Sequence for Gift Card Activation prior to the > – Send Transaction TAC.
2. Blackhawk GC Update	<ul style="list-style-type: none"> • Fixed • Response code handling with USE HOST MSG feature was displaying "USE HOST MSG" instead of the host text from bit 1-28. Host Module and WinEPS Engine were updated to enable the USE HOST MSG feature for cashier prompts. • Blackhawk Gift Card activations were declined by some card providers due to invalid Store ID format. The Host Module, WinEPS Viewer, and WinEPS Engine were updated to remove any erroneous extra spaces from store ID field. • Previously, scanned Gift Card transactions for cards with fewer than 19 digit PAN length were being sent up with Track2 containing leading 0s. Leading 0s from PAN within Track2 are now stripped off before sending the transaction to the ACI host.
3. Bashas AR Card support	<ul style="list-style-type: none"> • Enhancement • The Bashas AR card is supported by WinEPS as a Private Credit transaction with the addition of a Purchase Order number. • This requires the use of the 4 – PO Number TAC. The Purchase order number is sent up to ACI in bit 3-15.
4. ACI Signature Capture Host	<ul style="list-style-type: none"> • Enhancement • ACI has been added to the available ERC (Electronic Receipt Capture) hosts.
5. Response code update	<ul style="list-style-type: none"> • Update • ACI Response Code table has been updated with the most recent list of codes from ACI.

Albertsons

Enhancement	Description
1. Corrected Credit to debit and local approval logic	<ul style="list-style-type: none"> • Fixed • If the customer configuration was set to allow local approvals on card processing profiles, but the Host GUI configuration was set to disallow local approvals or forwards, transactions were being locally approved any time a transaction was converted back to credit after an attempted Credit-to-debit conversion. • This Host module corrects this by making sure the Host GUI settings for offline allowed/not allowed takes precedence over the card processing profile settings at all times.

Ascendent

Enhancement	Description
1. Support import of both Concord H&C and NPC Debit BIN file format	<ul style="list-style-type: none"> • Enhancement • For the Ascendant Host, the Debit BIN file will be successfully imported for either the Concord H&C format or the NPC Debit BIN format. • After the debitbin.txt is converted to debitbin.eft, the debitbin.txt is renamed to debitbin.old. • If the debitbin.txt is in a format that WinEPS doesn't recognize, the debitbin.eft is not updated, and the debitbin.txt is renamed to debitbin.old. • If the debitbin.txt is blank/empty, it is deleted without updating the debitbin.eft.
2. Corrected Credit to debit and local approval logic	<ul style="list-style-type: none"> • Fixed • If the customer configuration was set to allow local approvals on card processing profiles, but the Host GUI configuration was set to disallow local approvals or forwards, transactions were being locally approved any time a transaction was converted back to credit after an attempted Credit-to-debit conversion. • This Host module corrects this by making sure the Host GUI settings for offline allowed/not allowed takes precedence over the card processing profile settings at all times.

BioPay

Enhancement	Description
-------------	-------------

<p>1. Corrected Credit to debit and local approval logic</p>	<ul style="list-style-type: none"> • Fixed • If the customer configuration was set to allow local approvals on card processing profiles, but the Host GUI configuration was set to disallow local approvals or forwards, transactions were being locally approved any time a transaction was converted back to credit after an attempted Credit-to-debit conversion. • This Host module corrects this by making sure the Host GUI settings for offline allowed/not allowed takes precedence over the card processing profile settings at all times.
--	--

Concord: EPC

Enhancement	Description
<p>1. Added new response codes</p>	<ul style="list-style-type: none"> • Enhancement • New response codes have been added to the Concord: Atlanta host. • These new response codes display velocity data. • The following response codes have been added to the Concord: Atlanta host: <ul style="list-style-type: none"> NA Exceeds Daily Count - Mrch NB Exceeds Daily Amount - Mrch NX Exceeds Daily Cnt, Amt - Mrch ND Exceeds Period Count - Mrch NE Exceeds Period Amount - Mrch NF Exceeds Period Cnt, Amt - Mrch NG Exceeds Daily Count - Chain NH Exceeds Daily Amount - Chain NJ Exceeds Daily Cnt, Amt - Chain NK Exceeds Period Count - Chain NL Exceeds Period Amount - Chain NM Exceeds Period Cnt, Amt - Chain NP Negative File Hit - Mrch NR Negative File Hit - Chain • These new response codes will automatically be added when upgrading previous versions of WinEPS.
<p>2. Corrected Credit to debit and local approval logic</p>	<ul style="list-style-type: none"> • Fixed • If the customer configuration was set to allow local approvals on card processing profiles, but the Host GUI configuration was set to disallow local approvals or forwards, transactions were being locally approved any time a transaction was converted back to credit after an attempted Credit-to-debit conversion. • This Host module corrects this by making sure the Host GUI settings for offline allowed/not allowed takes precedence over the card processing profile settings at all times.

Concord: H&C Format

Enhancement	Description
1. Added state code to message to Telecheck for Concord H&C	<ul style="list-style-type: none"> Fixed The state code will go into the "D" field in the optional data area of the concord H&C message for personal checks when a second ID is sent.
2. BlackHawk Gift Cards ACTIVATIONS ONLY	<ul style="list-style-type: none"> Enhancement WinEPS supports the sale of Blackhawk Gift Cards. Blackhawk may also be referred to as Safeway or RAP. Currently, only Activations are supported. Blackhawk Gift Cards require the use of the p – UPC Code TAC. The p – UPC Code TAC must be placed in the Transaction Sequence for Gift Card Activation prior to the > – Send Transaction TAC.
3. Corrected Credit to debit and local approval logic	<ul style="list-style-type: none"> Fixed If the customer configuration was set to allow local approvals on card processing profiles, but the Host GUI configuration was set to disallow local approvals or forwards, transactions were being locally approved any time a transaction was converted back to credit after an attempted Credit-to-debit conversion. This Host module corrects this by making sure the Host GUI settings for offline allowed/not allowed takes precedence over the card processing profile settings at all times.

Concord: Memphis

Enhancement	Description
1. Corrected Credit to debit and local approval logic	<ul style="list-style-type: none"> Fixed If the customer configuration was set to allow local approvals on card processing profiles, but the Host GUI configuration was set to disallow local approvals or forwards, transactions were being locally approved any time a transaction was converted back to credit after an attempted Credit-to-debit conversion. This Host module corrects this by making sure the Host GUI settings for offline allowed/not allowed takes precedence over the card processing profile settings at all times.

Credomatic

Enhancement	Description
-------------	-------------

<p>1. -No Change to Host -</p>	<ul style="list-style-type: none"> • ---
--------------------------------	---

Demo

Enhancement	Description
<p>1. Wireless Phone Cards Deactivation</p>	<ul style="list-style-type: none"> • Fixed • Demo host was incorrectly declining the Deactivation of Wireless Phone Cards. Demo host has been updated to approve Wireless Deactivations.
<p>2. Revision of Demo host response amounts</p>	<ul style="list-style-type: none"> • Enhancement • The Demo host is utilized for demonstration and testing purposes. The responses returned for the even dollar amounts listed in the Host Definition screen have been enhanced, and new responses have been listed. • The memo box has been updated with the latest information.

ePicTranz

Enhancement	Description
<p>1. Add 2 response codes to EpicTranz host</p>	<ul style="list-style-type: none"> • Enhancement • Two response codes were added to the EpicTranz host: 92 Generate TOR 93 Generate TOR and Try for Local
<p>2. Corrected Credit to debit and local approval logic</p>	<ul style="list-style-type: none"> • Fixed • If the customer configuration was set to allow local approvals on card processing profiles, but the Host GUI configuration was set to disallow local approvals or forwards, transactions were being locally approved any time a transaction was converted back to credit after an attempted Credit-to-debit conversion. • This Host module corrects this by making sure the Host GUI settings for offline allowed/not allowed takes precedence over the card processing profile settings at all times.

GlobalPay

Enhancement	Description
-------------	-------------

<p>1. Corrected Credit to debit and local approval logic</p>	<ul style="list-style-type: none"> • Fixed • If the customer configuration was set to allow local approvals on card processing profiles, but the Host GUI configuration was set to disallow local approvals or forwards, transactions were being locally approved any time a transaction was converted back to credit after an attempted Credit-to-debit conversion. • This Host module corrects this by making sure the Host GUI settings for offline allowed/not allowed takes precedence over the card processing profile settings at all times.
--	--

LML

Enhancement	Description
<p>1. Offline Gift Card Deactivations given invalid trans</p>	<ul style="list-style-type: none"> • Fixed • The LML host does not support Offline Gift Card Deactivations; these transactions are now given an Invalid Transaction decline by WinEPS instead of being locally approved.
<p>2. Check Velocity Data text incorrect</p>	<ul style="list-style-type: none"> • Fixed • Velocity data text was incorrectly drawing from the shorter text entry field instead of the longer field. This has been corrected to draw text from the proper field.
<p>3. Host Response Codes adjusted for Alex Lee setting</p>	<ul style="list-style-type: none"> • Fixed • With the Check Auth Type set to Alex Lee, and the special option USE HOST MSG is used, the cashier display message will utilize the Terminal Display messages sent by the host, instead of mapping to the Customer Data field. • To bring the host interface up to date, the Alex Lee setting for Checks will now use the LML response code table, in the same way that all the other hosts do. • This entailed removing the special 'hard coded' messages for Alex Lee that routed the Customer Lines 1 and 2 to the Terminal and the Cashier line to the POS for display. The terminal and POS now receive the displays based on what is in the response code table, and the USE HOST MSG option contains the information for the LML Cashier display line; that way USE HOST MSG can be utilized to display the host message for the cashier. • This also solves an issue where LML host users who had Alex Lee defined were not seeing the balance displayed on the terminal during balance inquiry transactions. Now the balance shows up when the -B option is used in the Response Code table, because the response code table is now being used instead of the hard coding.
<p>4. Supports Online, Offline & TOR to same port</p>	<ul style="list-style-type: none"> • Enhancement • The LML host no longer requires the use of a two port connection. Previously, online transactions were sent over the first port, and offline and TOR messages were sent over the second port. • Along with this enhancement, an issue was fixed where WinEPS would crash when connected on the second port during end of day.

<p>5. Corrected Credit to debit and local approval logic</p>	<ul style="list-style-type: none"> • Fixed • If the customer configuration was set to allow local approvals on card processing profiles, but the Host GUI configuration was set to disallow local approvals or forwards, transactions were being locally approved any time a transaction was converted back to credit after an attempted Credit-to-debit conversion. • This Host module corrects this by making sure the Host GUI settings for offline allowed/not allowed takes precedence over the card processing profile settings at all times.
--	--

Lynk

Enhancement	Description
<p>1. Host settlement report must wait for health message</p>	<ul style="list-style-type: none"> • Fixed • The Lynk host cannot accept a settlement message while it is processing a health message. To allow for health message processing, the end of day settlement messages is delayed up to 15 seconds if a health message response is pending from the host.
<p>2. Change Lynk response code table</p>	<ul style="list-style-type: none"> • Enhancement • The Lynk response code table has been revised to remove all instances of the NV response code. The NV response code was not supported by the ISS45 register system; all NV response codes have been remapped to NO (Overridable Declines).
<p>3. Corrected Credit to debit and local approval logic</p>	<ul style="list-style-type: none"> • Fixed • If the customer configuration was set to allow local approvals on card processing profiles, but the Host GUI configuration was set to disallow local approvals or forwards, transactions were being locally approved any time a transaction was converted back to credit after an attempted Credit-to-debit conversion. • This Host module corrects this by making sure the Host GUI settings for offline allowed/not allowed takes precedence over the card processing profile settings at all times.

LX1, LX2, LX3 Hosts

Enhancement	Description
<p>1. Suspension of GC Activations for LX host using wrong lane number</p>	<ul style="list-style-type: none"> • Fixed • The LX Host gift card activations & deactivations were not going up with the correct lane number when an order is suspended and retrieved on another lane. This has been corrected so that the activation/deactivation transaction utilizes the initial lane number.

<p>2. Corrected Credit to debit and local approval logic</p>	<ul style="list-style-type: none"> • Fixed • If the customer configuration was set to allow local approvals on card processing profiles, but the Host GUI configuration was set to disallow local approvals or forwards, transactions were being locally approved any time a transaction was converted back to credit after an attempted Credit-to-debit conversion. • This Host module corrects this by making sure the Host GUI settings for offline allowed/not allowed takes precedence over the card processing profile settings at all times.
<p>3. Gift Card totals corrected</p>	<ul style="list-style-type: none"> • Fixed • Fixed issue with incorrect bucket totals in the LX Gift Card host where MTX was adding LX Gift Card redemptions with LX Mall Card Deactivations.

Mainsail

Enhancement	Description
<p>1. -No Change to Host -</p>	<ul style="list-style-type: none"> • ---

Mercury

Enhancement	Description
<p>1. New Mercury Host</p>	<ul style="list-style-type: none"> • Enhancement • WinEPS now supports the Mercury Host. • Full details on this feature are included in Section 2.
<p>2. Added configurable IP addresses</p>	<ul style="list-style-type: none"> • Enhancement • The mercury host GUI has been enhanced to allow the merchant to modify the IP addresses for both the Gift Card host and the Main Host IP addresses. Previously the default values were not configurable.

<p>3. Corrected Credit to debit and local approval logic</p>	<ul style="list-style-type: none"> • Fixed • If the customer configuration was set to allow local approvals on card processing profiles, but the Host GUI configuration was set to disallow local approvals or forwards, transactions were being locally approved any time a transaction was converted back to credit after an attempted Credit-to-debit conversion. • This Host module corrects this by making sure the Host GUI settings for offline allowed/not allowed takes precedence over the card processing profile settings at all times.
--	--

MPS (Fifth Third)

Enhancement	Description
<p>1. BlackHawk Gift Cards ACTIVATIONS ONLY</p>	<ul style="list-style-type: none"> • Enhancement • WinEPS supports the sale of Blackhawk Gift Cards. Blackhawk may also be referred to as Safeway or RAP. • Currently, only Activations are supported. • The UPC is front padded with zeros for full 11 digits • Leading 0s from PAN within Track2 from scanned gift cards are stripped off before sending the transaction to the host. • Blackhawk Gift Cards require the use of the p – UPC Code TAC. The p – UPC Code TAC must be placed in the Transaction Sequence for Gift Card Activation prior to the > – Send Transaction TAC.
<p>2. 2127 Balance Inquiry</p>	<ul style="list-style-type: none"> • Fixed • The NCR 2127 POS did not set a cashier number during a cashier initiated balance inquiry; this was causing WinEPS not to send the transaction on to the host. • To fix this issue, a default cashier ID of 000001 is used when WinEPS does not otherwise receive one.
<p>3. GC totals not showing on Host Settlement report</p>	<ul style="list-style-type: none"> • Fixed • Gift Card Purchase & Return totals are now reported correctly on the Host Settlement reports.
<p>4. Include GC Activations, Recharge, and Deactivation in the Host Settlement Report</p>	<ul style="list-style-type: none"> • Enhancement • WinEPS now displays the host totals returned by MPS for Gift Card Activations, Recharges, and Deactivations in the Host Settlement Report.

<p>5. SAF on 001 or 795 response</p>	<ul style="list-style-type: none"> • Fixed • When a 001 or 795 response is received for a Blackhawk Gift Card Activation transaction, WinEPS will perform Store and forward (offline) processing. Transactions that receive this response will be taken offline regardless of the current offline settings for the card or host.
<p>6. MTX Decline on Void Debit had Approved cashier message</p>	<ul style="list-style-type: none"> • Fixed • On Void of Debit transactions, even though the transaction was declined by WinEPS as an invalid transaction, the cashier message was listed as approved. The text has been corrected to correctly indicate the decline.
<p>7. Corrected Credit to debit and local approval logic</p>	<ul style="list-style-type: none"> • Fixed • If the customer configuration was set to allow local approvals on card processing profiles, but the Host GUI configuration was set to disallow local approvals or forwards, transactions were being locally approved any time a transaction was converted back to credit after an attempted Credit-to-debit conversion. • This Host module corrects this by making sure the Host GUI settings for offline allowed/not allowed takes precedence over the card processing profile settings at all times.

MTX Receipt Capture Host

Enhancement	Description
<p>1. -No Change to Host -</p>	<ul style="list-style-type: none"> • ---

NOVA

Enhancement	Description
<p>1. Changed Terminal Number and lane number fields</p>	<ul style="list-style-type: none"> • Fixed • The terminal number field length was increased from 13 to 14 characters. • Decreased the size of the lane number field from 3 digits to 2 digits. • The 14 digit terminal number and the 2 digit lane number are concatenated together for a 16 digit field that is sent to the host with each transaction.

<p>2. Corrected Credit to debit and local approval logic</p>	<ul style="list-style-type: none"> • Fixed • If the customer configuration was set to allow local approvals on card processing profiles, but the Host GUI configuration was set to disallow local approvals or forwards, transactions were being locally approved any time a transaction was converted back to credit after an attempted Credit-to-debit conversion. • This Host module corrects this by making sure the Host GUI settings for offline allowed/not allowed takes precedence over the card processing profile settings at all times.
--	--

Paypoint

Enhancement	Description
<p>1. Private Credit Force marked as invalid</p>	<ul style="list-style-type: none"> • Enhancement • The Paypoint host module and help files were updated to reflect Private Credit Force is an Invalid Transaction.
<p>2. Corrected GC reporting</p>	<ul style="list-style-type: none"> • Fixed • Multiple changes to the gift card processing caused Paypoint gift card activations to be placed incorrectly into Settlement reporting buckets. • Gift Card Returns and Recharges will now go correctly into the Credit Return bucket for reporting purposes.
<p>3. Corrected Credit to debit and local approval logic</p>	<ul style="list-style-type: none"> • Fixed • If the customer configuration was set to allow local approvals on card processing profiles, but the Host GUI configuration was set to disallow local approvals or forwards, transactions were being locally approved any time a transaction was converted back to credit after an attempted Credit-to-debit conversion. • This Host module corrects this by making sure the Host GUI settings for offline allowed/not allowed takes precedence over the card processing profile settings at all times.

Pay by Touch

Enhancement	Description
<p>1. Corrected Credit to debit and local approval logic</p>	<ul style="list-style-type: none"> • Fixed • If the customer configuration was set to allow local approvals on card processing profiles, but the Host GUI configuration was set to disallow local approvals or forwards, transactions were being locally approved any time a transaction was converted back to credit after an attempted Credit-to-debit conversion. • This Host module corrects this by making sure the Host GUI settings for offline allowed/not allowed takes precedence over the card processing profile settings at all times.

Shared (BigY)

Enhancement	Description
1. Corrected Credit to debit and local approval logic	<ul style="list-style-type: none">• Fixed• If the customer configuration was set to allow local approvals on card processing profiles, but the Host GUI configuration was set to disallow local approvals or forwards, transactions were being locally approved any time a transaction was converted back to credit after an attempted Credit-to-debit conversion.• This Host module corrects this by making sure the Host GUI settings for offline allowed/not allowed takes precedence over the card processing profile settings at all times.

SCAT Code Changes

Hypercom ICE5500

Enhancement	Description
1. Frequent Shopper entry by card slide	<ul style="list-style-type: none"> • Enhancement • Frequent Shopper information can now be entered by a card swipe on the terminal. SCAT code for the Everest, 490, Omni 7K, ICE5500 and ICE 6000 has been updated. • This option requires the POS use the MTX_POS_SET_DataEntry function call, requesting the Card Slide / Numeric Entry, with the POS supplying the text to prompt the customer. • POS developers should refer to the OpenEPS specification for function specifics.
2. Added Smart WIC update temporary bucket response to SCAT	<ul style="list-style-type: none"> • Fixed • For a Smart WIC transaction, the prescription was not being written to the card in exactly the correct sequence. The sequence has been updated such that the prescription is written in the following sequence: <ol style="list-style-type: none"> 1) First write the updated prescription to the temporary bucket (bucket 5) 2) Once the "ff" is written, the SCAR sends a "success string" to the POS 3) The updated prescription is then written from the temporary bucket to the permanent bucket 4) After the permanent bucket update is successful another "success string" is sent to the POS

Hypercom ICE6000

Enhancement	Description
1. Frequent Shopper entry by card slide	<ul style="list-style-type: none"> • Enhancement • Frequent Shopper information can now be entered by a card swipe on the terminal. SCAT code for the Everest, 490, Omni 7K, ICE5500 and ICE 6000 has been updated. • This option requires the POS use the MTX_POS_SET_DataEntry function call, requesting the Card Slide / Numeric Entry, with the POS supplying the text to prompt the customer. • POS developers should refer to the OpenEPS specification for function specifics.

Enhancement	Description
2. Added Smart WIC update temporary bucket response to SCAT	<ul style="list-style-type: none"> • Fixed • For a Smart WIC transaction, the prescription was not being written to the card in exactly the correct sequence. The sequence has been updated such that the prescription is written in the following sequence: <ol style="list-style-type: none"> 1) First write the updated prescription to the temporary bucket (bucket 5) 2) Once the "ff" is written, the SCAR sends a "success string" to the POS 3) The updated prescription is then written from the temporary bucket to the permanent bucket 4) After the permanent bucket update is successful another "success string" is sent to the POS

Hypercom L4100

Enhancement	Description
1. New ADA requirement overlay for the 4100	<ul style="list-style-type: none"> • Enhancement • New requirements specify that all pin pads must have the ability to provide physical button PIN entry. To meet this requirement for the 4100, an overlay was created to provide the required physical keyboard. • The use of this overlay requires updated screen files; updating of screen files will occur automatically after an upgrade.
2. 4100 displaying BI; says hit 'cancel' but no cancel button	<ul style="list-style-type: none"> • Enhancement • On some balance inquiry transactions the 4100 would display "Hit cancel to continue" but would not display a cancel button. The 4100 now includes the cancel button on balance inquiry transactions.

Hypercom L4250

Enhancement	Description
1. Support L4250 terminal	<ul style="list-style-type: none"> • Enhancement • WinEPS now supports the use of the Hypercom L4250 terminal with OpenEPS. • This terminal support includes the use of RFID. • Full details on this feature are included in Section 2.

Ingenico eN-Crypt 2100

Enhancement	Description
1. 2100 not sending KSN to OpenEPS	<ul style="list-style-type: none"> Fixed The 2100 now correctly sends the KSN to OpenEPS.
2. Customer Cashback "Other" button not functioning properly	<ul style="list-style-type: none"> Fixed The "Other" button for j – Customer Cashback TAC was not functioning properly. This issue has been corrected.

Ingenico eN-Touch 1000

Enhancement	Description
1. Add support for Ingenico eN-Touch 1000	<ul style="list-style-type: none"> Enhancement Added full support for the Ingenico eN-Touch 1000 terminal. This terminal utilizes the OPOS interface. Full details on this feature are included in Section 2.

IVI C2000 Protégé

Enhancement	Description
1. -No Change to Terminal Code -	<ul style="list-style-type: none"> ---

NCR 5993

Enhancement	Description
1. Added ETX and LRC to terminal messages	<ul style="list-style-type: none"> Fixed OpenEPS adds the ETX and LRC to each message received from the NCR5993 terminal.

Verifone Everest

Enhancement	Description
1. Frequent Shopper entry by card slide	<ul style="list-style-type: none"> • Enhancement • Frequent Shopper information can now be entered by a card swipe on the terminal. SCAT code for the Everest, 490, Omni 7K, ICE5500 and ICE 6000 has been updated. • This option requires the POS use the MTX_POS_SET_DataEntry function call, requesting the Card Slide / Numeric Entry, with the POS supplying the text to prompt the customer. • POS developers should refer to the OpenEPS specification for function specifics.
2. Reverse location of YES / NO soft keys for the Everest terminal	<ul style="list-style-type: none"> • Enhancement • The Yes and No soft key prompts have been aligned with the hard coded Yes/Enter and No/Cancel buttons so that Yes is consistently on the right side and No is on the left.

Verifone MX870

Enhancement	Description
1. Add support for Verifone Mx870	<ul style="list-style-type: none"> • Enhancement • Added full support for the Verifone Mx870 terminal. • Full details on this feature are included in Section 2.
2. MX870 Signature Capture Box fix	<ul style="list-style-type: none"> • Fixed • Previously after loading screen files for the first time, the signature capture box would appear near the bottom of the terminal screen. While this was a visual issue only, the latest terminal code release from Verifone has fixed the issue.

Verifone Omni 490

Enhancement	Description
1. Frequent Shopper entry by card slide	<ul style="list-style-type: none"> • Enhancement • Frequent Shopper information can now be entered by a card swipe on the terminal. SCAT code for the Everest, 490, Omni 7K, ICE5500 and ICE 6000 has been updated. • This option requires the POS use the MTX_POS_SET_DataEntry function call, requesting the Card Slide / Numeric Entry, with the POS supplying the text to prompt the customer. • POS developers should refer to the OpenEPS specification for function specifics.



Verifone Omni 7000

Enhancement	Description
1. Frequent Shopper entry by card slide	<ul style="list-style-type: none"> • Enhancement • Frequent Shopper information can now be entered by a card swipe on the terminal. SCAT code for the Everest, 490, Omni 7K, ICE5500 and ICE 6000 has been updated. • This option requires the POS use the MTX_POS_SET_DataEntry function call, requesting the Card Slide / Numeric Entry, with the POS supplying the text to prompt the customer. • POS developers should refer to the OpenEPS specification for function specifics.
2. Move Signature Done button from Enter to F1	<ul style="list-style-type: none"> • Enhancement • For the Omni 7000 terminal, to prevent the accidental depressing of the Enter key during signature capture, the button to indicate that the signature is complete has been moved to the F1 button, and the Enter key has been disabled.
3. Default encryption to DUKPT	<ul style="list-style-type: none"> • Enhancement • The default setting for encryption on the Omni 7000 have been changed from blank to DUKPT. This change will prevent getting a 'false Mastersession' effect on the terminal
4. Omni 7000 Low Cost SmartWIC support	<ul style="list-style-type: none"> • Enhancement • Low Cost SmartWIC is now supported for the Omni7000 terminal, and an installation package is included on the WinEPS installation CD. • To Install Low Cost SmartWIC, follow the instruction in Chapter 10 of the WinEPS User's guide.

Stand Beside Code Changes

IVI C2000 Protégé

Enhancement	Description
1. -No Change to Stand Beside Code -	<ul style="list-style-type: none"> • ---

Verifone Everest

Enhancement	Description
1. -No Change to Stand Beside Code -	<ul style="list-style-type: none"> • ---

Verifone Omni 490

Enhancement	Description
1. -No Change to Stand Beside Code -	<ul style="list-style-type: none"> • ---

External Program Changes

Redundancy Service

Enhancement	Description
1. Add a help button to RS	<ul style="list-style-type: none"> Enhancement A help button has been added to the bottom of the RS GUI. This button brings up a short help file with information pertaining to Primary Server Failure and bringing up the Backup server.
2. New RS GUI Password	<ul style="list-style-type: none"> Enhancement The Redundancy Service GUI now includes a password. This will allow store personnel to view the status of the Redundancy Service, without allowing unauthorized users the ability to change settings. For additional information on the RS password, contact MTX Support.
3. RS replication of signatures in real time	<ul style="list-style-type: none"> Enhancement Signature Capture has been added to the Redundancy Service real time replication. This replication process covers signatures received for the MTX Receipt host only, and does not replicate the receipts or signatures for the other ERC hosts. Previously, Redundancy service replicated only the transaction data in real time. The replication of all other files occur on first connect between Primary and Backup, and during the end of day process.

Virtual Terminal

Enhancement	Description
1. Allow alpha character in Auth Number	<ul style="list-style-type: none"> Enhancement This version of Virtual Terminal has been enhanced to support the entry of alpha characters in the "Auth. Number" field.

Host Simulator

Enhancement	Description
1. -No Change to Host Simulator -	<ul style="list-style-type: none"> ---

OMNI 7000 Scanmaster Code



Terminal code for the Scanmaster system is written and maintained by Concord. It is distributed on the WinEPS installation CD for convenience only.

Enhancement	Description
1. -No Change to Scanmaster Code -	<ul style="list-style-type: none"> ---

UpdateFiles.Exe

Enhancement	Description
1. Allow specified ini files	<ul style="list-style-type: none"> Fixed Prior versions were not correctly recognizing the name of an .ini file when it was specified via command line. This version allows the .ini file to be any name, as long as it is specified in the command; the default ini remains "updatefiles.ini".

WinEPS Agent

Enhancement	Description
1. New WinEPS Agent	<ul style="list-style-type: none"> The WinEPSAgent monitors the WinEPS service. This is a new feature that was not released with the Beta version of 818 SP1. It is included for release with the final 818 SP1 version. Full details on this feature are included in Section 2.

Section 2

New Features

WinEPS Fixed Issues and Enhancements #2:

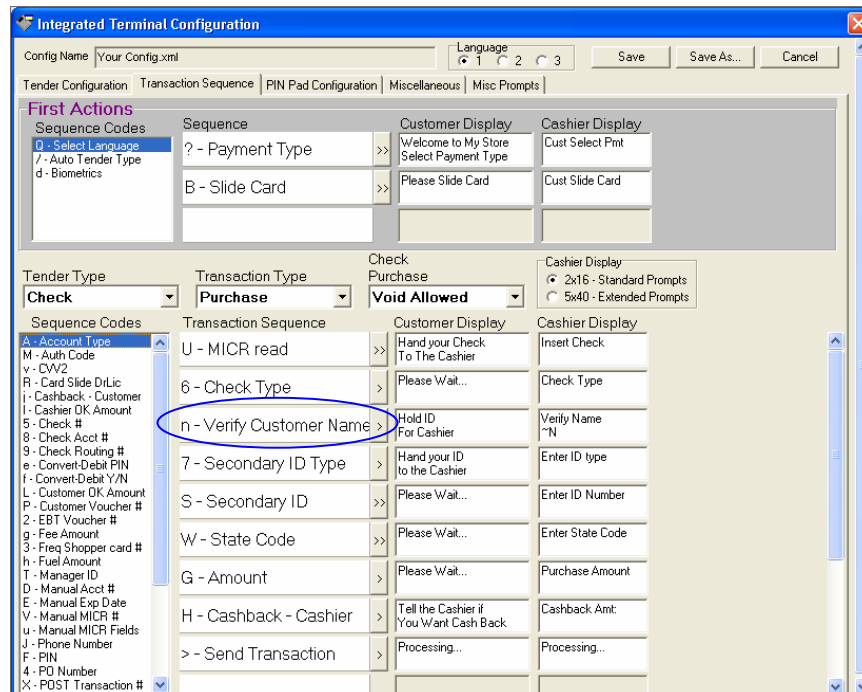
Biometrics Check Cashing

While complete in WinEPS, Pay By Touch has not yet finalized their development for this feature. **This feature will not be available until the Pay by Touch development is completed.**

Setting up the Verify Customer Name TAC

To set up the n – Verify Customer Name TAC, follow the steps below.

1. In the WinEPS GUI, go to Configuration | Terminal Configuration > OpenEPS lanes.
2. Select the Terminal Configuration that is in use.
3. On the Integrated Terminal Configuration Screen, go to the Transaction Sequence Tab.
4. Use the Tender Type drop down box to select Check; use the Transaction Type drop down box to select Purchase.



5. Drag the n – Verify Customer Name TAC from the Sequence Codes box, into the Check Purchase Transaction Sequence. Place it just before the Secondary ID Type TAC, as shown above.
6. Save the Tender configuration. Remember to stop and restart the WinEPS engine to initiate the changes.

WinEPS Fixed Issues and Enhancements #3:

Optional Customer Name Printing on Receipt

A Card Processing Profile flag has been added to allow the Option of printing or not printing the customer's name on the receipt.

This option only controls the WinEPS generated receipt; it is therefore effective for systems that utilize the WinEPS receipt. This option will not function for POS systems that utilize their own receipt templates.

To configure printing the customer name on the receipts, follow the steps below:

1. In the WinEPS GUI, go to Configuration | Card Processing Profiles.
2. For each card type, determine if customer name printing is desired. Use the Up and down arrows in the upper left to cycle through the card profiles.
3. To change the setting, click the Change button, then click on the check box next to Print customer name on receipt.

The screenshot shows the 'Card Processing Profiles' window. The 'Card Type' section shows Code 'AC', Name 'ACH', and Fleet Type 'None'. The 'Processing Flags' section is highlighted with a blue circle around the 'Print customer name on receipt (if available)' checkbox, which is checked. Other flags include 'Manual Entry Allowed', 'Prompt For Zip Code', 'Prompt For CVV2', 'Verify Acct# Check Digit', 'PIN Required', 'Allow Cash Back', 'Expiration Date Required', 'Verify Exp Date Online', and 'Verify Exp Date Offline'. The 'Local Auth Flags' section includes 'Purchase', 'Return', 'Force', 'PreAuth', and 'Activate' for both 'Allow local auth?' and 'Allow local void?'. The 'Online Auth Limits (in cents)' section shows 'Maximum Total Amount' at 100000 and 'Minimum Credit-to-Debit Amount' at 0. The 'Offline Auth Limits (in cents)' section shows 'Maximum Total Amount' at 20000 and 'Minimum Credit-to-Debit Amount' at 0. The 'Other (in cents)' section shows 'PreAuth amount to send to host' at 0.

4. A check in the box indicates the name will be printed, while an empty box indicates the name will not be printed.
5. Click Save.
6. Select a different card profile to configure, using the arrows, or click Exit to finish.
7. Remember to stop and restart the WinEPS engine to initiate any changes.

WinEPS Fixed Issues and Enhancements #22:

WinEPS Engine Monitor and Tray Icon

An optional system tray icon was added to WinEPS to display the engine status when the WinEPS GUI is not open.

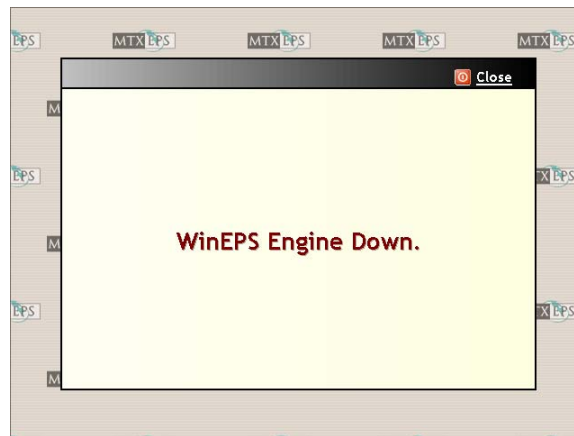
The icon appears in the windows system tray, and is green when WinEPS is up, and red when WinEPS is down. If the WinEPS engine goes down, a notice window of “WinEPS Engine Down” is displayed. If the Engine is restarted, the notice box will automatically close.

Note: The WinEPS engine stops automatically during the End of Day process, so the notice box will display briefly during that time.

The Engine monitor and tray icon is not installed automatically. To initiate the tray icon and engine monitor, you must manually start the WinEPSAgent.exe, or place a shortcut to it in the Windows Startup folder.

Displays

The Engine Monitor and Tray Icon displays the engine status in several ways. When the Engine is down, a notice box will appear on, as shown below.



Additionally, the Engine Monitor and Tray Icon has icon displays that reside in the Windows system tray, typically located at the bottom right of the screen. These icons also display the engine status.



The WinEPS Engine is up.



The WinEPS Engine is down.

You may right click on the tray icon and select Exit to quit the Engine Monitor and Tray Icon.

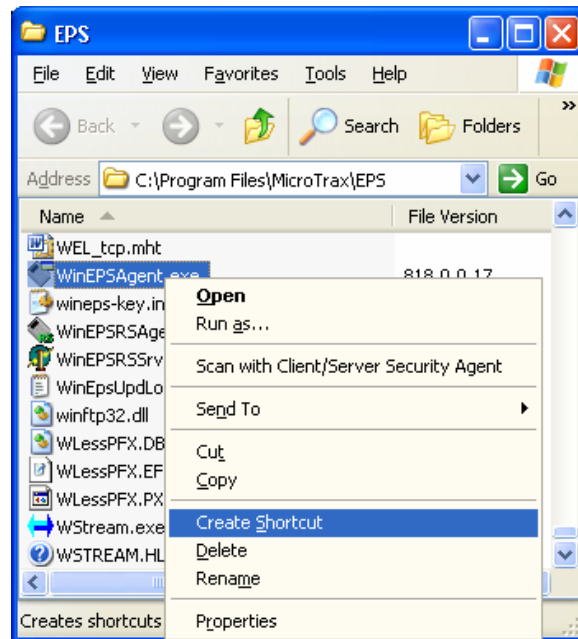
Setup

Follow the steps below to start the Engine Monitor and Tray Icon.

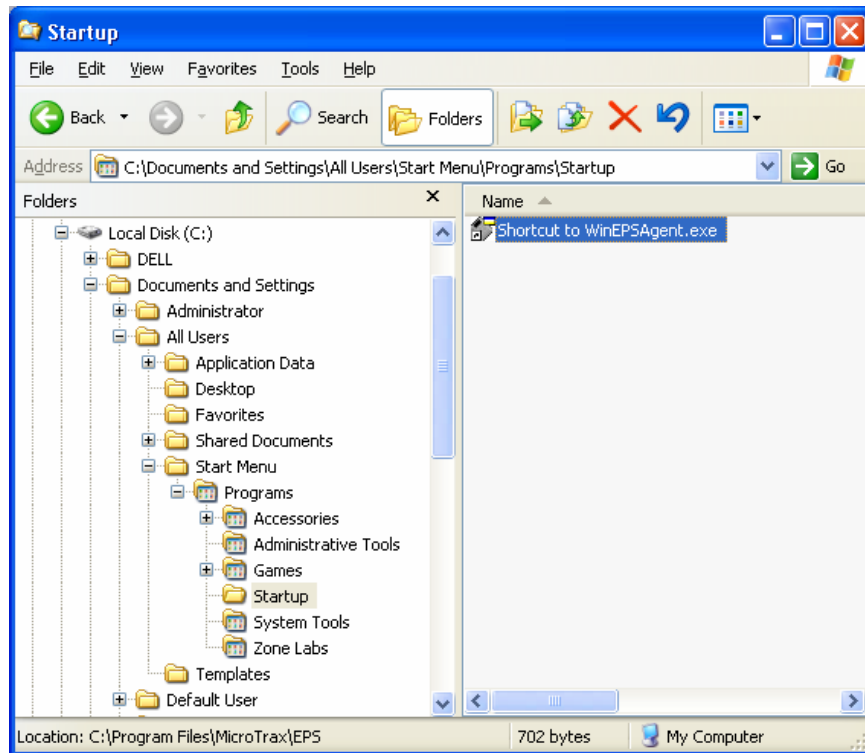
1. In Windows, use Explorer to go to your EPS directory. The default path is C:\Program Files\MicroTrax\EPS.
2. In the EPS directory, locate the WinEPSAgent.exe.
3. Double Click the WinEPSAgent.exe to start the Engine Monitor and Tray Icon.

Alternately, to have the Engine Monitor and Tray Icon start automatically when you sign on to Windows, a shortcut to it must be placed into the Windows Startup folder.

1. In Windows, use Explorer to go to your EPS directory. The default path is C:\Program Files\MicroTrax\EPS.
2. In the EPS directory, locate the WinEPSAgent.exe.
3. Right click on the WinEPSAgent.exe and select Create Shortcut.



4. Locate the Shortcut to WinEPSAgent.exe you just created and move it to the Startup directory. You can locate the Startup directory under C:\Documents and Settings\All Users\Start Menu\Programs\Startup. By placing it under the Startup directory under All Users, the Engine Monitor and Tray Icon will start up when any user logs on.

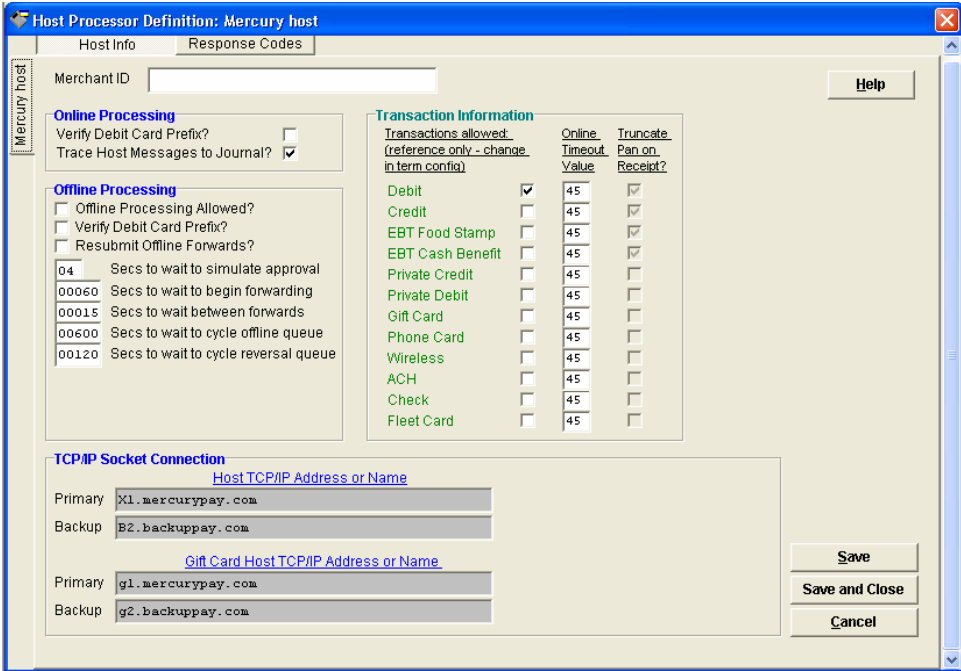


Host Changes – Mercury #1:

Mercury

Host Processor Definition Screen

This screen contains all the configuration options pertaining to the selected host.



Mercury Host Info Screen

Property	Description
Merchant ID	Supplied by Mercury
Online Processing	<p>Verify Debit Card Prefix?</p> <ul style="list-style-type: none"> Check this box to force verification of Debit prefixes against the WinEPS debit bin file <p>Trace Host Messages</p> <ul style="list-style-type: none"> Should always be checked; this provides additional information for MTXEPS troubleshooting.
Offline Processing	<p>Offline Processing allowed?</p> <ul style="list-style-type: none"> Indicates whether offline processing for this host is allowed. <p>Verify Debit Card Prefix?</p> <ul style="list-style-type: none"> Check this box to force verification of Debit prefixes against the WinEPS debit bin file <p>Resubmit Offline Forwards</p> <ul style="list-style-type: none"> Check to save and resubmit offline forwards that were declined due to insufficient funds; attempts over the next several days to complete the offline transaction.
Transaction Information	<p>Online Timeout Value</p> <ul style="list-style-type: none"> Default of 45 seconds; determines how long WinEPS will wait for a response from the host before determining that the host is offline. The

	<p>POS timers for these transactions should always be greater than the 45 seconds to avoid approval errors.</p> <p>Truncate Pan on Receipt</p> <ul style="list-style-type: none"> For each transaction type, verify that the box is checked if possible.
TCP/IP Socket Connection	Socket connection information is not configurable.

Buttons	Description
Help	Brings up this Help screen
Save	Saves configuration changes without closing screen.
Save and Close	Saves configuration changes and closes the screen.
Cancel	Closes screen without saving changes.

Supported Transaction Types

Legend:	
O	– Online only
B	– Both On & Offline
B/Disc	– As B , with Discover Card only
(V)	– Transaction Can be Voided
(VO)	–Can be Voided Online Only
X	– Not Supported
NA	– Not Applicable to Transaction Type

	Purchase / GC Redeem	Purch w/ CB	Cash Back Only	Return	Force [Voice/Voucher]	Return Voucher	Balance Inquiry	Activation	Deactivation	Recharge	PreAuth / Completion
Credit Card	B (V)	B/Disc (V)	X	B (V)	B	NA	NA	NA	NA	NA	X
Debit	B	B	B	B	X	NA	NA	NA	NA	NA	X
EBT – Cash	O	O	O	X	X	NA	O	NA	NA	NA	X
EBT – Food Stamp	O	NA	NA	O	B (V- Manual only)	X	O	NA	NA	NA	NA
Private Credit	X	X	X	X	NA	NA	NA	NA	NA	NA	X
Private Debit	X	X	X	X	NA	NA	NA	NA	NA	NA	X
ACH	X	X	X	X	X	NA	X	X	X	X	X
Check	B	B	?	X	X	NA	NA	NA	NA	NA	NA
Fleet	X	X	X	X	X	NA	NA	NA	NA	NA	X
Gift Card	O (VO)	X	NA	O (VO)	O (VO)	NA	O	O (VO)	X	O (VO)	X
Phone Card	NA	NA	NA	NA	NA	NA	NA	X	X	X	NA
Wireless	NA	NA	NA	NA	NA	NA	NA	X	X	X	NA

Supported Encryption Types

- DUKPT

Additional Information

- The Mercury host does not support TORs for Gift card or Check transactions.
- As shown in the Supported Transaction type chart above, voids are not supported for EBT Food, EBT Cash, or Debit transactions.
- Current only MICR read is supported for checks – no manual entry is allowed.
- End of day closing is a batch summary Request/Response
- All mercury batches close automatically between 2 and 3 am EST. Stores must individually work with the Mercury host providers to determine when the store location should process its end of day.

SCAT Code Changes - Hypercom L4250 #1:

Hypercom L4250

Loading SCAT Code on the L4250 Terminal

Standard SCAT Loading

This section details loading SCAT onto a terminal that does not already have SCAT code loaded onto it. Terminals with SCAT code already loaded will be upgraded automatically.

To load SCAT onto the terminal you must complete the following:

1. Setup Terminal Configuration
2. Set Terminal to download
3. Launch Stream Loader
4. Sign on to POS lane

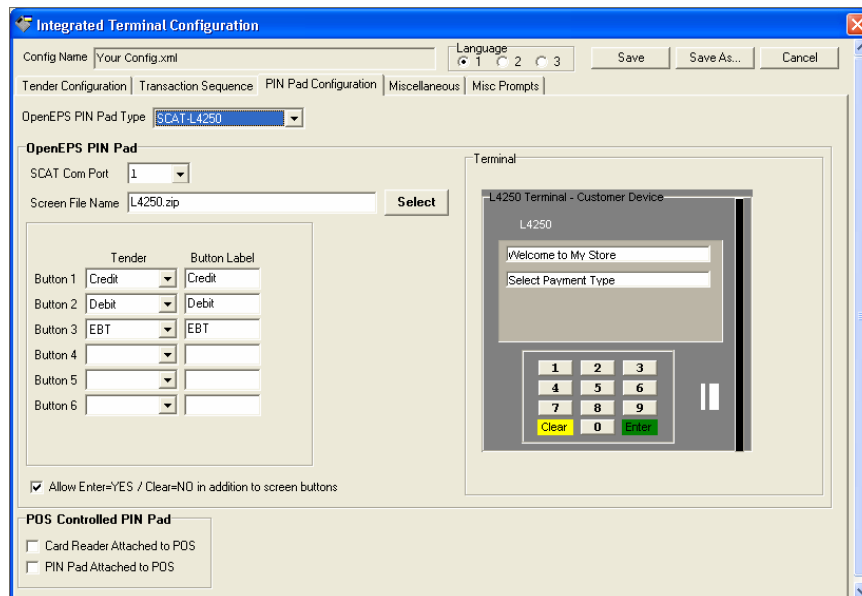
Setup Terminal Configuration

The L4250 is only supported for OpenEPS Lanes.

OpenEPS Setup for the L4250

To setup the Terminal, follow these steps:

1. In the WinEPS GUI, go to Configuration | Terminal Configuration | OpenEPS Lanes.
2. Use the OpenEPS PIN Pad Type drop down box to select SCAT - L4250. A graphic of the terminal and further settings will be made available.



App B, Fig 1 – Pin Pad Configuration – L4250

3. In the SCAT Com Port dropdown box, select the COM port on the POS computer that the terminal attaches to.
4. To set the Screen File Name, click the Select button. Select the L4250.zip file.
 - If the appropriate zip file is not present follow these steps:

1. Insert the WinEPS Installation CD
 2. Browse to the [CD Root]\OpenEPS\SCAT Code\L4250\ directory.
 3. Select your screen files from the appropriate sub-directory.
 4. Place the zip file into the [root drive]:\Program Files\MicroTrax\EPS\config\screenfiles\ directory, on the server which is running WinEPS.
 5. You should then be able to select the zip file as described above.
5. Set up the Tenders for Button 1 to 6 by using the drop down box. Verify the default text for the Button Label is appropriate.

Set Terminal to Download

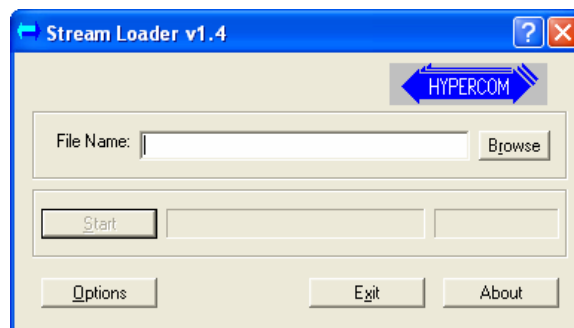
To initialize the terminal and set it for download, follow these steps:

1. Power-up the L4250 Terminal.
2. When the first information screen appear, select the Setup button.
3. A password prompt will appear. Enter MULTILANE on the alpha/numeric keyboard.
 - Numerically the password is: 685845263
4. From the L4250 Terminal's Main Menu, select Util.
5. From the Utilities menu, select Downld
6. From the Download menu, select Stream
7. You will be prompted for the Baud rate; select #5, 115200.
8. Press Start. At this point, you are now ready to load the SCAT code.

Launch Stream Loader

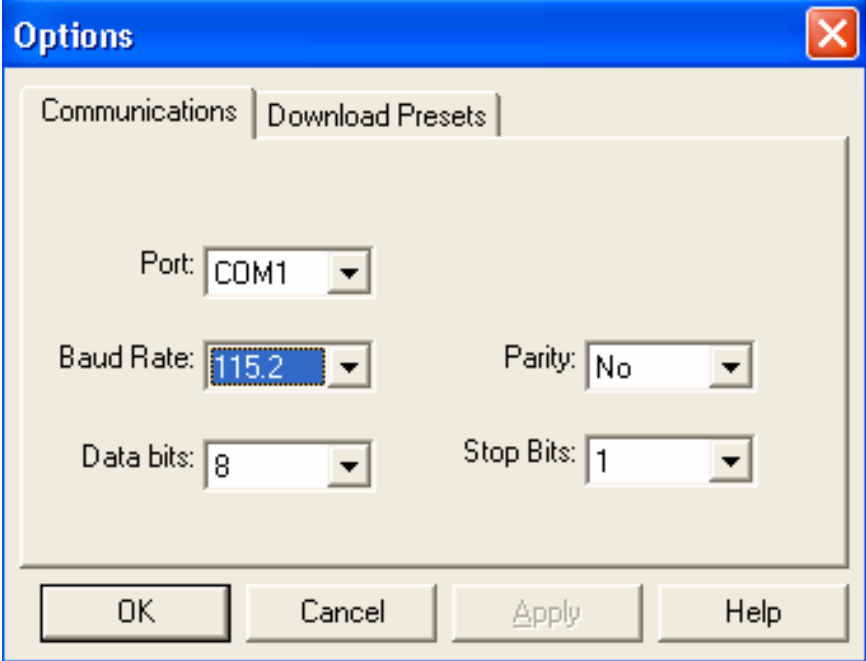
To start the download of SCAT follow these steps:

1. Verify that no other program is currently using the COM port on the computer to which the terminal is attached. This often includes shutting down the POS application.
2. Browse to the [root drive]:\Program Files\MicroTrax\EPS\ directory, on the server which is running WinEPS.
3. Double-click WStream.exe; this should launch the Stream Loader application.



App B, Fig 2 – Stream Loader – L4250

4. Click Options to display Stream Loader's Options window.

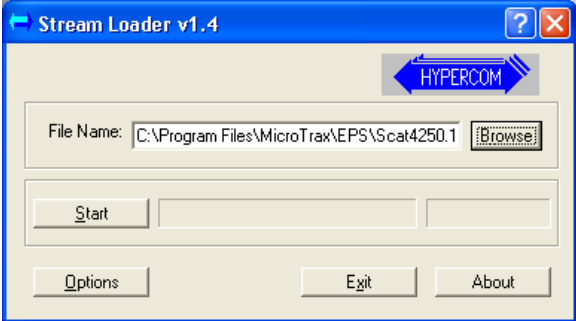


App B, Fig 3 – Stream Loader Options – L4250

5. Set the options according to the chart below.

Property	Description
Port	Select the PC port to which the L4250 is attached.
Baud Rate	Set to [115.2].
Data bits	Set to [8].
Parity	Set to "No".
Stop Bits	Set to [1].

- 6. Click OK. This directs you back to Stream Loader’s Main window.
- 7. Click Browse and switch to the [root drive]:\Program Files\MicroTrax\EPS\ directory where you extracted the SCAT code.
- 8. Select Scat4250.XXX, where XXX is the latest version number.



App B, Fig 4 – Stream Loader Scat Selected – L4250

9. Click Start to begin loading.

Sign on to POS lane

After the SCAT code load of the L4250 is complete, you must download the appropriate screen files. At this point, the terminal displays the message, "Waiting for Screen Files". Downloading Screen files is handled automatically by signing on to the POS application. Verify that the WinEPS service is on and the lanes are 'Up' on the WinEPS GUI before attempting a sign-on.

Manual SCAT Loading

This section details manual instructions for loading SCAT onto a terminal that does not already possess SCAT code. It is recommended that the Standard SCAT Loading method be attempted above first.

The only difference between a full 'manual' load of SCAT and the Standard loading is the addition of Extracting the SCAT to the proper directory, as detailed below.

To load SCAT onto the terminal you must complete the following:

1. Extract SCAT code (if necessary)
2. Perform Standard SCAT Load

Extract the SCAT Code

SCAT code is included in the standard installation of WinEPS. There are only two times you will need to extract SCAT code manually:

- You have received upgraded or patched SCAT code that is not part of a WinEPS release CD
- You want to load SCAT code from a computer that is neither the WinEPS Server, nor the OpenEPS lane.

If you have received a zip file of SCAT code separately from MTXEPS (often as a patch), simply extract it to the C:\Program Files\MicroTrax\EPS directory on the WinEPS server, and then follow the Standard SCAT Loading instruction in the section above.

If you want to load SCAT onto a terminal from a separate computer, follow the steps below:

1. Insert the WinEPS Installation CD
2. Browse to the [CD Root]\OpenEPS\SCAT Code\L4250 directory.
3. From this directory select the SCAT - L4250 v00XX.zip
4. Extract the zip to the [root drive]:\Program Files\MicroTrax\EPS\ directory, on the server which is running WinEPS.

Perform Standard SCAT Load

Once the SCAT code has been extracted, follow the steps as detailed under the Standard SCAT Loading section above.

SCAT Code Changes – Ingenico eN-Touch 1000 #1:

Ingenico eN-Touch 1000

Loading Script Code on the Ingenico eN-Touch 1000

Standard Script Loading

The eN-Touch 1000 terminal must be loaded manually using an external batch file. Refer to the next section for instructions.

Manual Script Loading

This section details manual instructions for loading Script onto a terminal that does not already possess Script code. If the terminal already possesses code, do not attempt to reload it.

To load Script onto the terminal you must complete the following:

1. Extract Script code
2. Set Terminal to download
3. Run a command line batch file

Extract the Script Code

Script code is included on the WinEPS CD in the event that a terminal is received without Script code already loaded. You must extract the script code from the WinEPS Installation CD in order to load the 1000.

If you want to load Script onto the 1000, follow the steps below:

1. Determine whether you have the 512K or 1MB; power cycle your terminal and look at the upper right portion of the screen as it comes back up, it will say F: 512K or 1000K (1MB).
2. Insert the WinEPS Installation CD
3. Browse to the [CD Root]\OpenEPS\SCAT Code\Entouch 1000\ directory. From there choose the directory that matches the terminal's memory, either 512k or 1M
 - 1000 OPOS Operating System(SA00004-06.06-0-512k)
 - 1000 OPOS Operating System(SA00005-06.06-0-1M)
4. Copy the contents of this directory to the computer you wish to load the 1000 terminal from. It is recommended that you copy the directory and files to the desktop for ease of use.

Set Terminal to Download

Follow the steps below to set the terminal to be ready to receive a script load.

1. Connect Terminal to COM 1 or COM 2 of PC
2. Power cycle the Entouch 1000 and hold the "stylus pen" in the middle of the screen until "three menu options" screen pops up. This takes about about 10 seconds.
3. Select Supervisor Menu
4. Enter the password "263"
5. First Menu option shows CMDL; Press Enter
6. The display will now show CMDL only; the terminal is ready for downloading

Run a Batch File



1. Go to the copy of the 1000 OPOS Operating System directory on the computer you are loading the 1000 from.
2. Locate the Download.bat file. Double click the file to run the batch file. It will attempt to connect to COM 1. If the terminal is connected to COM 2, you must edit the batch file.
 - For COM2, replace the /p1 switch with /p2
3. If a window appears you can minimize it until terminal shows download DONE.

The terminal should begin loading the SCAT code.

SCAT Code Changes – Verifone MX870 #1:

Verifone MX870

Loading FormAgent Code on the MX870

Standard FormAgent Loading

This section details loading FormAgent onto a terminal that does not already have FormAgent code loaded onto it. Terminals with FormAgent code already loaded will be upgraded automatically.

To load FormAgent onto the terminal you must complete the following:

1. Setup Terminal Configuration
2. Set Terminal to Download Mode
3. Extract the FormAgent Code
4. Run a Command Line Batch File
5. Sign onto your POS

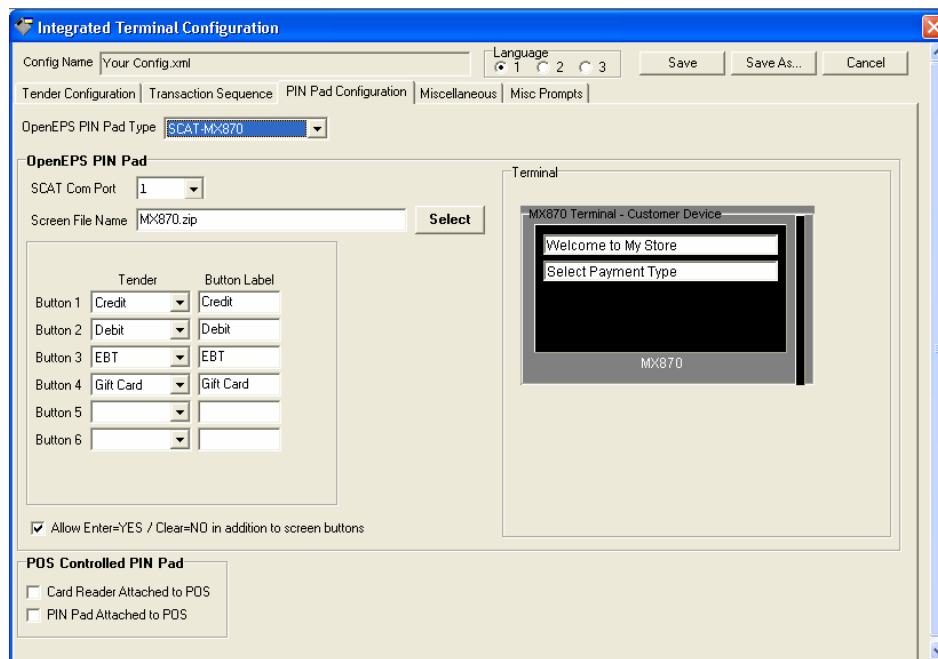
Setup Terminal Configuration

The MX870 is only supported for OpenEPS Lanes.

OpenEPS Setup for the MX870

To setup the Terminal, follow these steps:

1. In the WinEPS GUI, go to Configuration | Terminal Configuration | OpenEPS Lanes.
2. Use the OpenEPS PIN Pad Type drop down box to select SCAT–MX870. A graphic of the terminal and further settings will be made available.



App B, Fig 5 – Pin Pad Configuration – MX870 or MX870+

3. In the SCAT Com Port dropdown box, select the COM port on the POS computer that the terminal attaches to.
4. To set the Screen File Name, click the Select button. Select the Hypercom 4100.zip file.
 - If the appropriate zip file is not present follow these steps:
 1. Insert the WinEPS Installation CD
 2. Browse to the [CD Root]\OpenEPS\SCAT Code\MX870\ directory.
 3. Select your screen files from the appropriate sub-directory.
 4. Place the zip file into the [root drive]:\Program Files\MicroTrax\EPS\config\screenfiles\ directory, on the server which is running WinEPS.
 5. You should then be able to select the zip file as described above.
5. Set up the Tenders for Button 1 to 6 by using the drop down box. Verify the default text for the Button Label is appropriate.

Set Terminal to Download

1. Reset the terminal: On the top edge of the terminal in the right corner there is a small hole. This hole is the reset button; use a pin to press this reset button. Hold the button down until the blue "run-way" or MSR active indicator lights turn on.
2. Once the reset occurs you will be prompted for the password. Key in: 1-6-6-8-3-1 and press Enter.
3. From the Verifone MX870 System screen, select File Transfer
4. Next, select the Download icon.
5. From the Configure Direct Download screen, verify the following settings:
 - Port: This is the port on the dongle to which the terminal is attached, and not the Com port on the computer.
 - Baud: Set to 115200
 - Download Type: For a complete load of FormAgent set to Full. For loading just the screenfiles, select Partial.
6. Press the key labeled "Go". The terminal is now ready to receive the download.

Extract the FormAgent Code

1. Insert the WinEPS Installation CD.
2. Determine if you are loading the full FormAgent code, or just the ScreenFiles.
3. Browse to the [CD Root] OpenEPS\SCAT Code\Mx870>Loading\FormAgent directory
4. From this directory copy the files to a convenient directory on your local machine. The following files should be copied:
 - ddl.exe
 - Down.BAT
 - FMAGENT.P1
 - FMAGENT.P2
 - FMAGENT.SYS
 - FMAGENT.TGZ
5. Rename FMAGENT.P1 or FMAGENT.P2 to FMAGENT.SYS depending on which port the Mx870 Cable is plugged into; FMAGENT.SYS is defaulted to port 2.

Run a Command Line Batch File

6. Open up a command prompt.



7. Change directory to the location where you have copied the files.
8. At the command Prompt type in:
Down 1
Where '1' is the com port that the terminal is connected to.
9. Press enter and the terminal should begin loading the FormAgent code.

Sign On POS

After the FormAgent code loads, sign onto your POS with a valid cashier ID. Your POS may be a register system, or Virtual Terminal; the FormAgent screen files should load automatically at this point.

Manual FormAgent Loading

This section details manual instructions for loading FormAgent onto a terminal that does not already possess FormAgent code. It is recommended that the Standard FormAgent Loading method be attempted above first.

To load FormAgent onto the terminal you must complete the following:

1. Extract FormAgent code (if necessary)
2. Locate FormAgent Code
3. Set Terminal to Download
4. Run a command line batch file
5. Extract the Screen files
6. Set Terminal to Download (again)

Extract the FormAgent Code

See the Standard FormAgent Loading section above for instructions.

Set Terminal to Download

See the Standard FormAgent Loading section above for instructions.

Run a Command Line Batch File

See the Standard FormAgent Loading section above for instructions.

Extract the Screen files

After the FormAgent Code is loaded, you may use the following steps to manually load the screen files.

1. Insert the WinEPS Installation CD
2. Browse to the [CD Root] OpenEPS\SCAT Code\Mx870>Loading\ScreenFiles directory.
3. From this directory, copy the files to a convenient directory on your local machine.

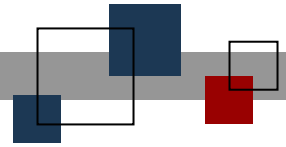
Set Terminal to Download

Prepare the Mx870 for downloading again by following the instructions under the **Set Terminal to Download** section above. Remember that the loading the screen files use the Partial load option and not the Full load.

1. Open up a command prompt.
2. Change directory to the location where you have copied the files.
3. At the command Prompt type in:
LDMx870SF 1 mx870Default.tgz

Where '1' is the com port that the terminal is connected to and mx870Default.tgz is the name of the screen files you wish to load.

4. Press enter and the terminal should begin loading the FormAgent code.



© StoreNext Retail Technologies LLC 2006

StoreNext Retail Technologies LLC endeavors to ensure that the information in this document is correct and fairly stated but does not accept liability for any error or omission.

The development of StoreNext products and services is continuous and published information may not be up to date. It is important to check the current position with StoreNext. This document is not part of a contract or license save insofar as may be expressly agreed.